



2016

European model shown.

TT

TT | TT Roadster | TTS



Audi TT | TT Roadster

One step further. When you're evolving an automotive icon, one that helped shape the now unmistakable Audi aesthetic, it's the only place you can go. Introducing the all-new 2016 Audi TT, proof that going one step further can be beautifully rewarding.

With its taut, geometric lines meticulously sculpted to convey dynamism, its broad, imposing shoulders, angular Audi Singleframe grille and aluminum exposed filler cap, the all-new Audi TT has an exterior that captivates without prejudice. And yet what's inside is every bit as remarkable. Supple Fine Nappa leather, lightweight aluminum and stainless steel

finishes envelop you in luxury while the new Audi virtual cockpit provides an intuitive instrument cluster that delivers on-demand information on a 12.3-inch colour display.

When you choose the available S line® package, "sport" is given a whole new meaning, thanks to aggressive exterior styling, 19" Audi Sport 5-double-spoke wheels, sport-tuned suspension and unique seating accents. And when you combine the efficient 220-hp 2.0-litre TFSI® engine using Audi valve lift technology with a 6-speed S tronic® transmission, you'll agree, this car deserves to be set free.





European models shown.

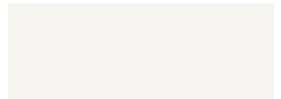


Audi TTS

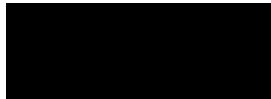
Born on the racetrack and tuned for the open road, the all-new Audi TTS Coupé was designed to ensure each moment spent behind the wheel is more epic than the last. Precisely sculpted to portray a more chiseled, angular physique, the Audi TTS boasts a sharper, wider Audi Singleframe grille, 19" 5-arm Facet design alloy wheels, large four-piston monobloc front brake calipers, as well as a high-resolution Audi virtual cockpit, and standard full-LED headlights. A 292-hp TFSI® engine delivers power to spare, while quattro® all-wheel drive helps assure your Audi TTS will hug the road with conviction.

TT / TT Roadster / TTS Specs

Exterior colours



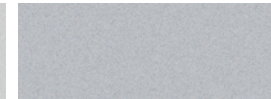
Ibis White^{1,2}



Brilliant Black^{1,2}



Glacier White Metallic^{1,2}



Florett Silver Metallic^{1,2}



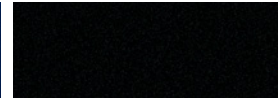
Monsoon Grey Metallic¹



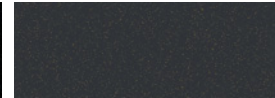
Tango Red Metallic^{1,2}



Scuba Blue Metallic¹



Mythos Black Metallic^{1,2}



Nano Grey Metallic²

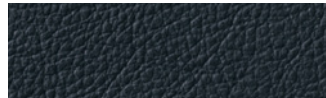


Sepang Blue Metallic²



Vegas Yellow²

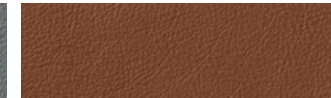
Interior surface colours and trims



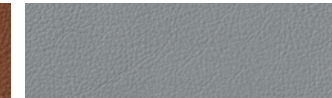
Black^{1,2}



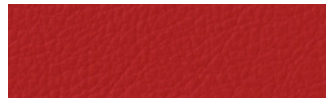
Rock Grey¹



Palomino Brown¹



Rotor Grey^{1,2}



Express Red²



Aluminum Drift Silver²



Matte Brushed Aluminum^{1,2}

Wheels



18" wheels
245/40
all-season tires¹



19" wheels
245/35
performance tires¹



19" wheels
245/35
performance tires¹



19" wheels
245/35
performance tires²

Package contents

S line Sport Package¹

- ▶ 19" Audi Sport 5-double-spoke wheels w/ 245/35 performance tires
- ▶ S line sport suspension
- ▶ S line exterior
- ▶ S line badge on steering wheel
- ▶ Anthracite accenting on seats and in the interior
- ▶ S line fender badging
- ▶ Brushed aluminum inlays
- ▶ S line aluminum door sills
- ▶ S embossing on front seats

Driver Comfort Package^{1,2}

- ▶ Advanced key
- ▶ Audi parking system w/ front & rear sensors
- ▶ Rear view camera
- ▶ Audi side assist

Navigation Package^{1,2}

- ▶ MMI® Navigation plus for Audi virtual cockpit
- ▶ DVD playback
- ▶ Speech dialogue system w/ whole-address entry

LED Headlights¹

- ▶ LED headlights w/ LED turn signals
- ▶ LED tail lights w/ dynamic turn signals
- ▶ LED all-weather lights

Technical features

	TT Coupé 2.0 TFSI quattro	TT Roadster 2.0 TFSI quattro	TTS Coupé 2.0 TFSI quattro
4-cylinder engine, 2.0 TFSI, 220 hp	●	●	–
4-cylinder engine, 2.0 TFSI, 292 hp	–	–	●
6-speed S tronic automatic transmission	●	●	●
Audi progressive steering	●	●	●
Audi magnetic ride	–	–	●
quattro all-wheel-drive system	●	●	●
Horsepower (hp @ rpm)	220 @ 4500–6200	220 @ 4500–6200	292 @ 5400–6200
Torque (lb-ft @ rpm)	258 @ 1600–4400	258 @ 1600–4400	280 @ 1900–5300
Acceleration 0–100 km/h (sec)	5.6	5.9	4.9
Fuel consumption ¹¹			
City (L/100 km)	10.1	10.1	10.3
Highway (L/100 km)	7.8	7.8	8.6
Dimensions (mm)	Length: 4184	Length: 4184	Length: 4191
	Width: 1832	Width: 1832	Width: 1832
	Height: 1353	Height: 1358	Height: 1343

● Standard – Not Available

Equipment highlights

TT Coupé quattro	TT Roadster quattro	TTS Coupé quattro
<p>Equipment highlights:</p> <ul style="list-style-type: none"> ▶ 18" 5-double-spoke dynamic design alloy wheels w/ 245/40 all-season tires ▶ S Sport seats in Fine Nappa leather w/ diamond stitching ▶ Push button ignition ▶ SiriusXM® satellite radio ▶ Audi music interface w/ USB connectivity ▶ HomeLink® garage door opener ▶ MMI® touch w/ hand-writing recognition ▶ Power driver and passenger seats ▶ Heated front seats ▶ Rear parking sensors ▶ Automatic climate control ▶ Xenon plus headlights w/ LED daytime running lights 	<p>Equipment highlights:</p> <ul style="list-style-type: none"> ▶ 18" 5-double-spoke dynamic design alloy wheels w/ 245/40 all-season tires ▶ S Sport seats in Fine Nappa leather w/ diamond stitching ▶ Push button ignition ▶ SiriusXM® satellite radio ▶ Audi music interface w/ USB connectivity ▶ HomeLink® garage door opener ▶ MMI® touch w/ hand-writing recognition ▶ Power driver and passenger seats ▶ Heated front seats ▶ Rear parking sensors ▶ Automatic climate control ▶ Xenon plus headlights w/ LED daytime running lights 	<p>Equipment highlights:</p> <ul style="list-style-type: none"> ▶ 19" 5-arm facet design alloy wheels w/ 245/35 performance tires ▶ S sport seats in Fine Nappa leather w/ diamond stitching ▶ Push button ignition ▶ SiriusXM® satellite radio ▶ Audi music interface w/ USB connectivity ▶ HomeLink® garage door opener ▶ MMI® touch w/ hand-writing recognition ▶ Power driver and passenger seats ▶ Heated front seats ▶ Rear parking sensors ▶ Automatic climate control ▶ Full LED headlights and all-weather lights

1. TT Coupe and Roadster. 2. TTS Coupe.

TT / TT Roadster / TTS

6. Do not drive distracted. The use of mobile devices while driving, other than in hands-free mode, is illegal in many regions and unsafe.

7. Your Audi vehicle may be equipped with a phone preparation utilizing Bluetooth® interface to enable hands-free functionality (compatible mobile phones sold separately). You will need a Bluetooth®-enabled mobile phone in order to utilize this function. Not all Bluetooth®-enabled mobile phone models are compatible with Audi phone preparation. Contact your local Audi dealer for the latest listing of compatible phones.

8. Please drive safely and obey all traffic laws, including speed limits.

9. Audi side assist, Audi pre sense, active lane assist, night vision, cruise control, parking system, head-up display and all other safety and convenience features are means of assisting the driver only. Drivers must continue to devote their full attention to safe driving. Some features are available as options and may not be available on all models. Airbags are supplemental restraints only and will not deploy under all accident circumstances. Always use safety belts and seat children only in the rear seats, using restraint systems appropriate for their size and age.

10. The Audi Navigation System depends upon signals from the worldwide Global Positioning Satellite network. The vehicle's electrical system, and existing wireless and satellite technologies, must be available and operating properly for the system to function. The system is designed to provide you with suggested routes in locating addresses, destinations and other points of interest. Changes in street names, construction zones, traffic flow, points of interest or other road system changes are beyond the control of Audi Canada. Complete, detailed mapping of lanes, roads, streets, toll roads, highways, etc., is not possible, therefore you may encounter discrepancies between the mapping and your actual location. Please rely on your individual judgment in determining whether or not to follow a suggested Audi Navigation System route. Periodically new mapping data is available. HDD update is required in order to maintain the latest navigation information. Updates are available for purchase from time to time at additional cost. Consult your dealer or call 1-800-FOR-AUDI for details.

11. Fuel consumption ratings are estimates based on Natural Resources Canada's (NRCan) fuel consumption criteria and testing methods for 2016 model year vehicles. Please note that comparisons to seemingly similar vehicles pre-2015 model year will show discrepancies due to the difference in NRCan approved calculation methods for 2014 model year and older vehicles. Please refer to NRCan's Fuel Consumption Guide 2016 for estimated fuel consumption figures. Actual fuel consumption will vary based on driving conditions, driver habits and the vehicle's condition, weight carried and additional equipment.

Audi Canada believes the specifications in this brochure to be correct at the time of printing. However, specifications, standard equipment, options, fabrics and colours are subject to change without notice. Audi Canada is not responsible for errors in typography or photography. Some equipment may be unavailable when your vehicle is built. Some vehicles are pictured with options that may be available at extra cost or may not be available on some models. Please ask your dealer for advice concerning current availability of standard and optional equipment and verify that your vehicle will include the equipment you ordered. Vehicles in this brochure are European models shown with optional equipment or accessories that may not be available in Canada. Tires are supplied and warranted by their manufacturer. Your vehicle is sold equipped with all-season tires. However, please remember the use of winter tires may be mandatory in your province or territory. Make sure your vehicle is equipped with the proper tires at all times. Tires supplied by various manufacturers. See your dealer for complete details on the limited warranty, the Audi 24-hour Roadside Assistance (provided by Club Auto Roadside Services), or the 12-year limited warranty against corrosion perforation. Certain conditions apply; please see your dealer for details. "TDI" and "TDI Clean Diesel" are registered trademarks of Volkswagen AG. "HomeLink" is a registered trademark of Johnson Controls Technology Company. The Bluetooth word mark and logos are registered trademarks of Bluetooth SIG, Inc. "SiriusXM" is a trademark of SIRIUS XM Radio Inc. "Audi", "Audi pre sense", "TT", "TTS", "MMI", "quattro", "TFSI", "S tronic", "S line", "Vorsprung durch Technik", and the four rings and Audi emblems are registered trademarks of AUDI AG.

©2015 Audi Canada