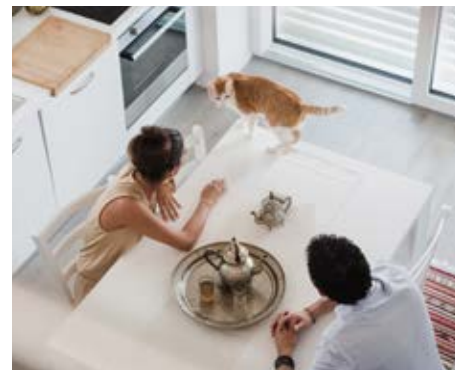
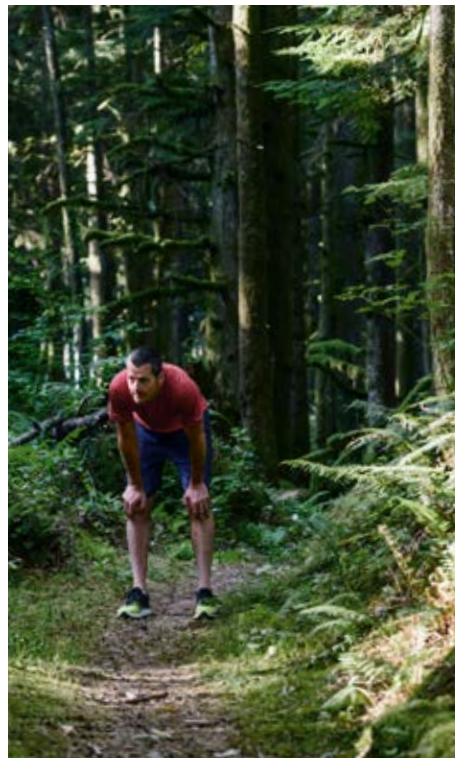


2016 ACCORD





Boardrooms and button-ups, T-shirts and sneakers, friends and nights out, kids and late nights. No matter where you've been or where you're going, drive accordingly.

Overview P.1/2

Sedan P.3/4

Coupe P.5/6

Sport P.7/8

Interior P.9/10

Technology P.11/12

Performance & Efficiency P.13/14

Honda Sensing™ Technologies P.15/16

Safety P.17/18

Accessories P.19/20

The Power Of Dreams P.21/22

Warranty P.23/24

Specs P.25-30

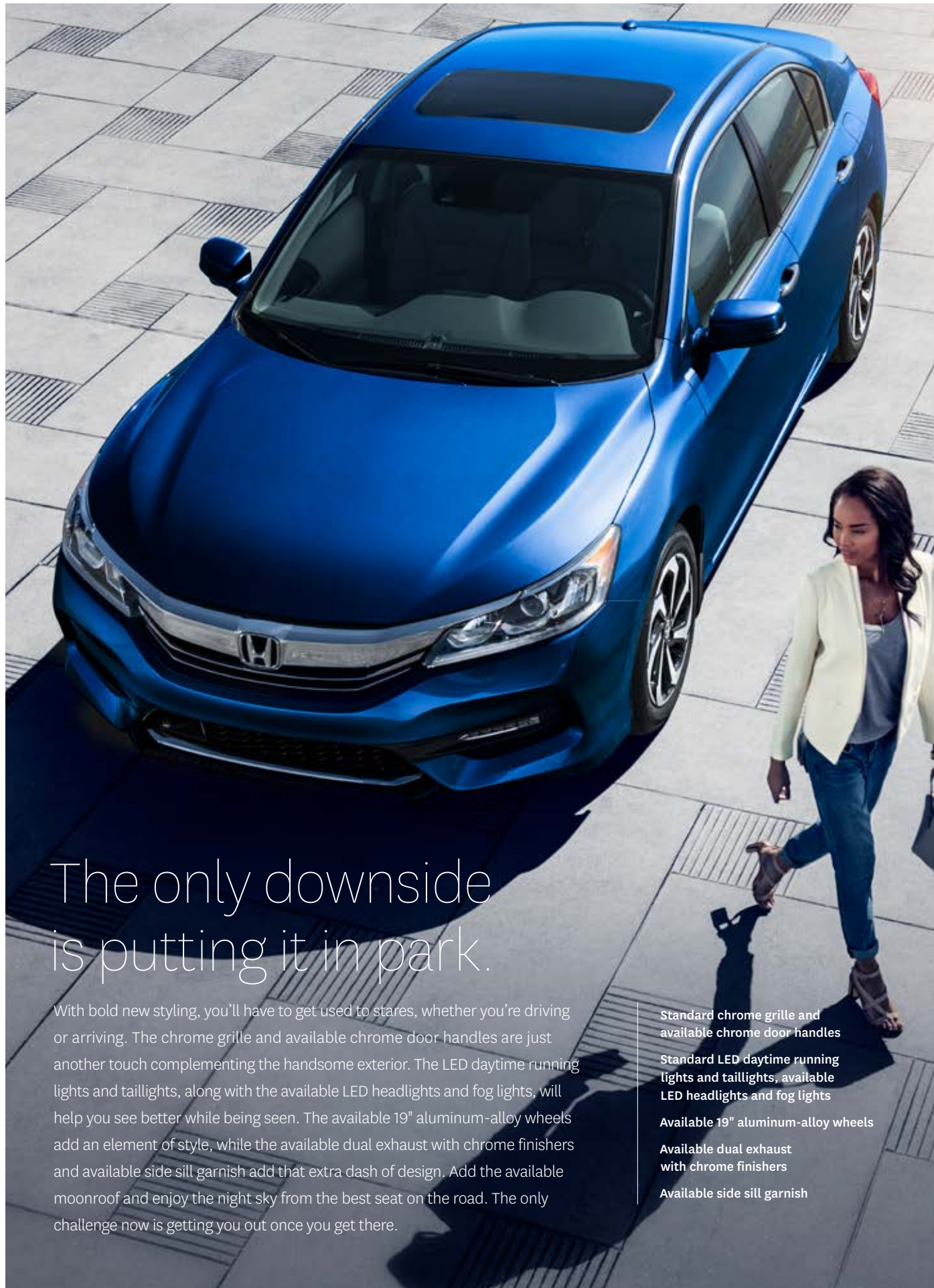
Colours & Trims P.31-34

The Accord does one thing really well. And that's everything.

The Accord, like its drivers, embraces change. We don't just think about putting our drivers behind the wheel. We think about putting them behind dynamic performance with an athletic exterior. And with technology like the Display Audio system, equipped with Apple CarPlay^{TM1,2} and Android Auto,^{TM1,2} you can stay connected. In terms of evolution, this is just the beginning. The 2016 Accord is here, and soon you will be, too.

1. None of the features we describe are intended to replace the driver's responsibility to exercise due care while driving. Drivers should not use handheld devices or operate certain vehicle features unless it is safe and legal to do so. Some features have technological limitations. For additional feature information, limitations and restrictions, please visit www.honda.ca/disclaimers and refer to the vehicle's Owner's Manual.
2. Only compatible with certain devices and operating systems. Cellular data and/or voice charges may apply, including roaming charges and/or other amounts charged by your wireless carrier.



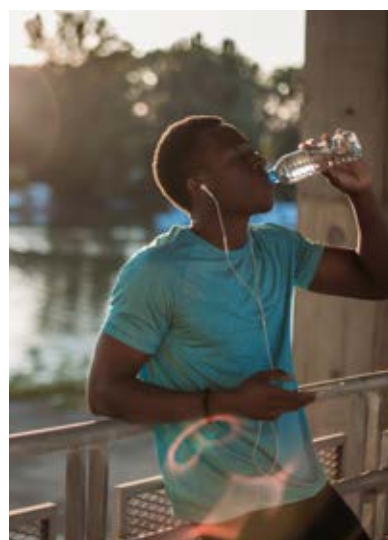
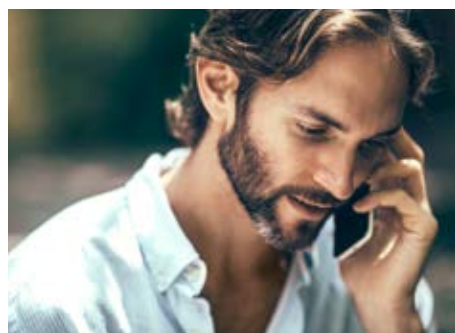


The only downside is putting it in park.

With bold new styling, you'll have to get used to stares, whether you're driving or arriving. The chrome grille and available chrome door handles are just another touch complementing the handsome exterior. The LED daytime running lights and taillights, along with the available LED headlights and fog lights, will help you see better while being seen. The available 19" aluminum-alloy wheels add an element of style, while the available dual exhaust with chrome finishers and available side sill garnish add that extra dash of design. Add the available moonroof and enjoy the night sky from the best seat on the road. The only challenge now is getting you out once you get there.

- Standard chrome grille and available chrome door handles
- Standard LED daytime running lights and taillights, available LED headlights and fog lights
- Available 19" aluminum-alloy wheels
- Available dual exhaust with chrome finishers
- Available side sill garnish





If a car could flex.

The Accord Coupe doesn't just drive, it performs; the dark chrome grille and chrome door handles complement its sleek and sporty design, while the 18" aluminum-alloy wheels on the EX and the 19" aluminum-alloy wheels on the Touring trims help to emphasize its refined sophistication and muscular physique. But the styling doesn't end there: the available dual exhaust with chrome finishers gives it a look that can't help but get noticed. Add the spoiler and the Accord Coupe is almost more athlete than car. As for visibility, there's a more stylish way to see. The LED daytime running lights, taillights, fog lights and available headlights are designed to help you see better while you're driving. No matter what you choose, there are no wrong choices.

Available 19" aluminum alloy wheels

Proximity key entry and pushbutton start

Rear deck lid spoiler

Available body-coloured front and rear parking sensors



Meet the athlete of the family.

The Accord Sport trim is nothing short of exhilarating. With the stylish and comfortable interior, you'll find a second home in the driver's seat. And the aluminum-trimmed sport pedals, side sill garnish, dual exhaust with chrome finishers, 19" wheels and one-touch power moonroof might just make you forget you've got somewhere to be. But what else would you expect from a vehicle that looks as good as it drives?

Aluminum-trimmed sport pedals

Side sill garnish

Leather/fabric combi seating surfaces

Carbon fibre-finish accents

Dual exhaust with chrome finishers

Proximity key entry and pushbutton start

19" aluminum-alloy wheels





Enjoy luxury no matter what seat you're in.

INTERIOR | 9/10

On the inside, the only downside is you have to get out. The available perforated leather-trimmed seating surfaces are a testament to arriving in style. And the heated front and available heated rear seats (Sedan only) will bring new meaning to your understanding of comfort. If there's a particular way you like to sit, the Accord will remember it and keep it that way with the 10-way power adjustment including power lumbar support and available seat position memory. And with the dual-zone automatic climate control, both driver and passenger can get what they want, whether it's a little heat or a lot of air conditioning. New features like available wireless charging and available rain-sensing windshield wipers help to make the ride that much more enjoyable. While you're making yourself comfortable, be sure to enjoy some music with the available 360-watt AM/FM/CD Premium audio system with MP3/Windows Media Audio® playback capability and 7 speakers including subwoofer. And the Display Audio System¹ with HondaLink™^{1,2} and Apple CarPlay™^{1,2}/Android Auto™^{1,2} provides an entertainment system that delivers in a big way. Don't be shy, say hello to luxury.



1. None of the features we describe are intended to replace the driver's responsibility to exercise due care while driving. Drivers should not use handheld devices or operate certain vehicle features unless it is safe and legal to do so. Some features have technological limitations. For additional feature information, limitations and restrictions, please visit www.honda.ca/disclaimers and refer to the vehicle's Owner's Manual.
 2. Only compatible with certain devices and operating systems. Cellular data and/or voice charges may apply, including roaming charges and/or other amounts charged by your wireless carrier.

The future looks convenient.

Display Audio System with Apple CarPlay™/Android Auto.™

With the Display Audio System¹ with Apple CarPlay™^{1,2} and Android Auto™,^{1,2} you'll start coming up with excuses to go out for a drive. Your compatible phone is integrated with the Display Audio System, helping to make it more convenient to stay connected with friends and family, so you can enjoy a more entertaining ride.

Available Honda LaneWatch™ blind spot display.

Keep more of your right side in sight with the available Honda LaneWatch™ blind spot display³. Exclusive to Honda,³ it's engineered to send a live video feed from a camera mounted under your passenger-side mirror to the Display Audio System¹ screen, providing close to four times more visibility than the side view mirror alone.

7.7" intelligent Multi-Information Display.

The 7.7" i-MID (intelligent Multi-Information Display) isn't just about staying connected to friends and family via the Accord's text message^{1,2} and e-mail^{1,2} functionality, it's also about having easy access to a host of important vehicle information such as fuel efficiency and trip range. The trip and audio information is complemented by the clock and wallpaper functions, as well as turn-by-turn directions (when using available embedded navigation or Apple CarPlay™^{1,2} or Android Auto™^{1,2} navigation apps). The i-MID also serves as the display for the available Honda LaneWatch™ blind spot display³ and standard multi-angle rearview camera.¹

Available body-coloured front and rear parking sensors.

The available parking sensors are another step in helping Honda drivers enter and depart parking spaces more safely. By providing both an audio and visual alert, the system is designed to inform the driver when they're approaching another vehicle or certain sized obstacle.

Available Honda Satellite-Linked Navigation System™ with bilingual Voice Recognition.

The available Honda Satellite-Linked Navigation System™^{1,4} comes with bilingual Voice Recognition, and uses the Display Audio System¹ to plan your route. Say goodbye to asking for directions.

Available proximity key entry system with pushbutton start.

Getting in just got even easier. Automatically unlock your doors and start your engine with the push of a button with the available proximity key entry system and pushbutton start. Leave your keys in your pocket or purse and get used to more convenience.

Available wireless charging.

Charge your smartphone without plugging it in. Simply drop your compatible smartphone into the available wireless charging pad and let the Accord do the rest. No wires, no distraction and more battery power by the time you get there.



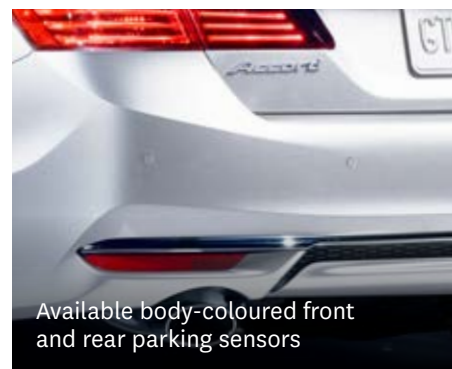
Display Audio System¹ with Apple CarPlay™^{1,2}



Display Audio System¹ with Android Auto™^{1,2}



7.7" intelligent Multi-Information Display



Available body-coloured front and rear parking sensors



Available Honda Satellite-Linked Navigation System™^{1,4} with bilingual Voice Recognition and 3D map display



Available proximity key entry system with pushbutton start



Available wireless charging

1. None of the features we describe are intended to replace the driver's responsibility to exercise due care while driving. Drivers should not use handheld devices or operate certain vehicle features unless it is safe and legal to do so. Some features have technological limitations. For additional feature information, limitations and restrictions, please visit www.honda.ca/disclaimers and refer to the vehicle's Owner's Manual.
2. Only compatible with certain devices and operating systems. Cellular data and/or voice charges may apply, including roaming charges and/or other amounts charged by your wireless carrier.
3. Based on information available to Honda Canada Inc. as of November 17, 2015.
4. Map database covers major metropolitan areas in Canada and the 48 contiguous U.S. states.

There's no such thing as 'just a drive'.

The Accord was built to perform; with up to 278 horses¹ under the hood, it's hard not to. Add the available continuously variable transmission (CVT) and you'll understand that driving and enjoying yourself can mean the same thing. The improved suspension and handling are also responsible for the smiles you'll be seeing in the rearview. And with the Eco Assist™ system and ECON mode button, designed to improve fuel efficiency, the Accord helps you spend more time driving and less time filling up. When it comes to driving experiences, this is one that you won't easily forget.

2.4-litre, Direct Injection with 185 horsepower¹ (189 horsepower¹ on the Sport trim) and available 3.5-litre V6 engine with 278 horsepower¹

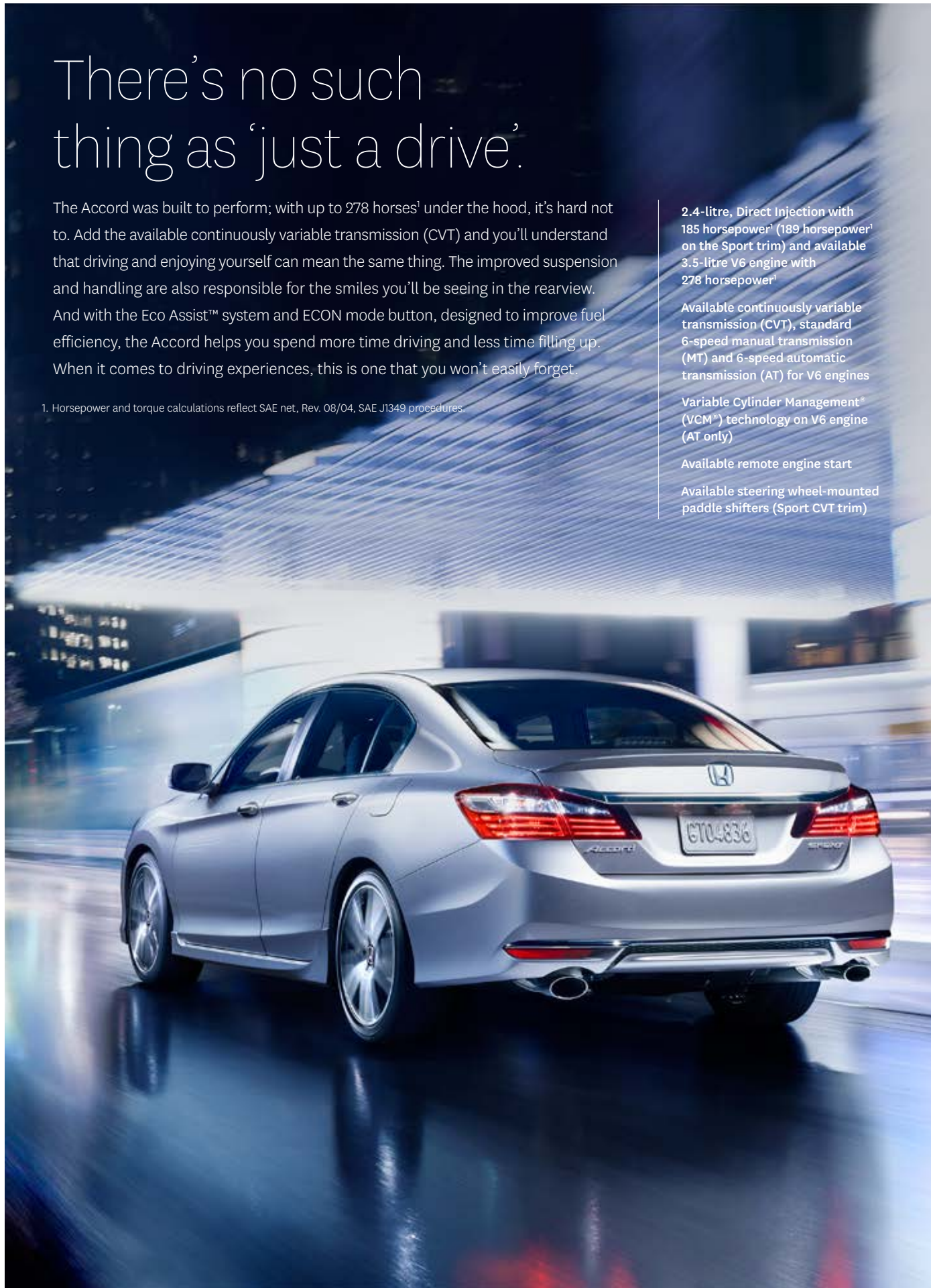
Available continuously variable transmission (CVT), standard 6-speed manual transmission (MT) and 6-speed automatic transmission (AT) for V6 engines

Variable Cylinder Management[®] (VCM[®]) technology on V6 engine (AT only)

Available remote engine start

Available steering wheel-mounted paddle shifters (Sport CVT trim)

1. Horsepower and torque calculations reflect SAE net, Rev. 08/04, SAE J1349 procedures.



Comes complete with a sixth sense.

The Honda Sensing™ technologies are designed to help make your drive safer. With intuitive technology and design, we've created a way forward that we can all feel good about. Whether you're driving or sitting in the passenger seat, feel confident in the latest in safety innovation from Honda.

HONDA SENSING™ TECHNOLOGIES

Collision Mitigation Braking System™ (CMBS®).

To help reduce the likelihood or severity of a frontal impact, the available CMBS® is engineered to apply the brakes if you don't slow down when it senses you're at risk of a collision. If it still senses an imminent collision, CMBS® is designed to brake firmly.

Adaptive Cruise Control (ACC).

The available ACC system¹ is designed to keep a set speed and set following interval behind a vehicle detected ahead of yours.

Lane Keeping Assist System (LKAS).

The available LKAS¹ is engineered to gently correct your steering when you begin to leave a detected lane without signaling, applying torque progressively to the steering to help guide you back to the centre of the lane.

Forward Collision Warning (FCW) system.

The available FCW system¹ that is integrated with CMBS® is designed to detect the presence of vehicles in front of you and issue alerts if you're approaching with too much speed. If you fail to respond to the alerts, the CMBS® is triggered into operation.

Lane Departure Warning (LDW) system.

The available LDW system¹ is designed to monitor vehicle lane position and alert you when your vehicle drifts into a new lane when you haven't signaled.

Road Departure Mitigation (RDM) system.

The available Road Departure Mitigation system¹ is designed to help steer and even apply the brakes when necessary to help keep the vehicle from leaving the road.



Available Collision Mitigation Braking System™



Available Road Departure Mitigation system



Available Lane Keeping Assist System



Available Lane Departure Warning system



Available Adaptive Cruise Control



Available Forward Collision Warning system

Honda Sensing™ suite of safety and driver assist features are only available on automatic transmission vehicles.

¹ None of the features we describe are intended to replace the driver's responsibility to exercise due care while driving. Drivers should not use handheld devices or operate certain vehicle features unless it is safe and legal to do so. Some features have technological limitations. For additional feature information, limitations and restrictions, please visit www.honda.ca/disclaimers and refer to the vehicle's Owner's Manual.

Solid on safety.

At Honda, we strive to provide a high level of standard safety features to help ensure the safety of occupants, other drivers and even pedestrians. This added peace of mind helps our drivers maintain the confidence to enjoy every road to the fullest.



1. None of the features we describe are intended to replace the driver's responsibility to exercise due care while driving. Drivers should not use handheld devices or operate certain vehicle features unless it is safe and legal to do so. Some features have technological limitations. For additional feature information, limitations and restrictions, please visit www.honda.ca/disclaimers and refer to the vehicle's Owner's Manual.
2. For optimal tire wear and performance, the pressure should be checked regularly with a tire gauge. Do not rely solely on the monitor system.
3. Only compatible with certain devices and operating systems. Cellular data and/or voice charges may apply, including roaming charges and/or other amounts charged by your wireless carrier.
4. Operation requires wireless mobile phone to be paired with the vehicle. Operation is dependent upon cellular data and/or voice connection availability and GPS satellite signal reception.

ACTIVE SAFETY

Controlled Braking

To assist with safe stopping, the 4-wheel Anti-lock Braking System¹ (ABS) is designed to help you maintain control under hard braking conditions, while Electronic Brake-force Distribution (EBD) helps to optimize braking power based on weight distribution inside the vehicle. In addition, Brake Assist is engineered to help improve braking performance by applying brake pressure when a panic stop is detected.

Vehicle Stability Assist (VSA®) with Traction Control

Vehicle Stability Assist¹ with Traction Control is designed to sense and help correct oversteer and understeer scenarios to enhance handling and cornering stability, while Traction Control is designed to minimize wheel spin when accelerating on loose or slippery surfaces, helping to inspire greater driver confidence.

Hill Start Assist¹

When you take your foot off the brake, this feature is engineered to temporarily maintain brake pressure to help prevent your Accord from starting to roll backwards when stopped on an incline.

Tire Pressure Monitor System (TPMS)

To promote enhanced safety and fuel efficiency, the Tire Pressure Monitoring System² monitors and compares the rolling radius and rotational characteristics of each wheel and tire while you are driving to determine if one or more tires are significantly under-inflated.

PASSIVE SAFETY

Advanced Compatibility Engineering™ (ACE™) body structure

The highly innovative, next generation Advanced Compatibility Engineering™ (ACE™) body structure is engineered to help disperse frontal impact energy to enhance occupant protection, while more effectively controlling it in severe collisions, to help prevent intrusion into the passenger cabin.

HondaLink™ Assist Automatic Emergency Response System

The HondaLink Assist Automatic Emergency Response System^{1,3,4} helps you get the help you need when you need it most. If the airbags deploy, your Display Audio System¹ is designed to automatically attempt to put you on a call with an operator who will forward your location to first responders if needed. It works with any compatible Bluetooth®-paired phone as long as it has reception, does not require a subscription and gives you added peace of mind while you're on the road.

Child safety

The Accord features childproof rear door locks (Sedan only), as well as rear seat Lower Anchors and Tethers for Children (LATCH), which give you a simple and convenient method to install compatible child safety seats without using the vehicle's seat belt system.

Pedestrian safety

Innovative pedestrian safety features include an energy-absorbing hood and front fenders and deformable wiper pivots.

Six standard airbags

The Accord comes with six standard airbags. It features dual-stage, multiple-threshold front airbags as well as Smartvent™ side airbags, which are designed to deploy in a manner that mitigates the risk of injury to out-of-position or smaller occupants. On top of all that, it features a side curtain airbag with a wide deployment profile designed to help enhance ejection mitigation.

Seat belt safety

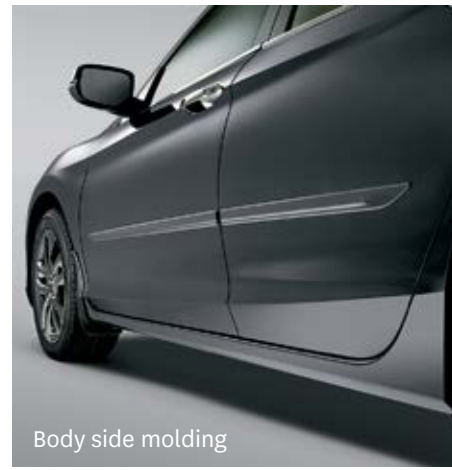
The Accord helps prepare you for the unexpected with 3-point height-adjustable (Sedan only) front seat belts with automatic tensioning system and 3-point rear seat belts.



Trunk tray



Rear splash guards



Body side molding



Side underbody spoiler



Door sill trim, illuminated



All-season floor mats



Cargo net



Moonroof visor



Cargo hook



19" alloy wheel - super-bright chrome

Sedan Accessories.

18" alloy wheel - super-bright chrome
 19" alloy wheel - super-bright chrome
 All-season floor mats
 Ashtray, cup-holder style
 Auto day/night mirror
 Auto day/night mirror attachment
 Body side molding
 Car cover
 Cargo hook
 Cargo net
 Door edge film
 Door edge guards
 Door lower garnish, chrome

Door sill trim
 Door sill trim, illuminated
 Door visors
 Engine block heater
 Fog lights
 Front underbody spoiler
 Full nose mask
 Grille trim
 Hood edge deflector
 Interior illumination
 Interior illumination, sport
 Locking wheel nuts - exposed
 Locking wheel nuts - unexposed

Moonroof visor
 Paint pen
 Rear back-up sensors
 Rear bumper appliqué
 Rear deck lid spoiler
 Rear seat cover
 Rear splash guards
 Rear underbody spoiler
 Rear wing spoiler
 Side underbody spoiler
 Trunk edge and bumper protector
 Trunk tray

Protection package

All-season floor mats
 Rear splash guards
 Trunk tray

Aero kit

Front underbody spoiler
 Rear underbody spoiler
 Side underbody spoiler

Fundamental package

Cargo hooks
 Cargo net

ProStyle package

All-season floor mats
 Door sill trim, illuminated
 Grille trim
 Trunk tray

Remote engine starter package

Base unit
 Attachment without pushbutton start
 Key fob

Coupe Accessories.

18" alloy wheel - super-bright chrome
 19" alloy wheel - super-bright chrome
 All-season floor mats
 Ashtray, cup-holder style
 Auto day/night mirror
 Auto day/night mirror attachment
 Body side molding
 Car cover
 Cargo hook
 Cargo net
 Door edge film
 Door edge guards
 Door sill trim, illuminated

Engine block heater
 Fog lights, LED
 Front underbody spoiler
 Full nose mask
 Hood edge deflector
 Interior illumination
 Locking wheel nuts - exposed
 Locking wheel nuts - unexposed
 Moonroof visor
 Paint pen
 Rear back-up sensors
 Rear bumper appliqué
 Rear deck lid spoiler

Rear splash guards
 Rear underbody spoiler
 Side underbody spoiler
 Trunk edge and bumper protector
 Trunk tray

Protection package

All-season floor mats
 Rear splash guards
 Trunk tray

Aero kit

Front underbody spoiler
 Rear underbody spoiler
 Side underbody spoiler

Fundamental package

Cargo hooks
 Cargo net

Remote engine starter package

Base unit
 Attachment
 Key FOB



HondaJet



Motorcycles



Side By Side



ASIMO



Honda Campus



Marine



Power Equipment



ATVs



The Power of Dreams, in all their forms.

At Honda, we're committed to being a leader in innovative thinking. It's part of everything we do, from the design of our vehicles to the way we work. We have a proud tradition of turning ideas into products and initiatives that help move and improve people's lives in every conceivable way. Today, our innovation manifests itself in many forms: our revolutionary Earth Dreams™ technology, the race-inspired performance of our motorcycles and automobiles, the world's most advanced humanoid robot, ASIMO, HondaJet, the fastest, highest flying and most fuel-efficient aircraft in its class, and the first full line of fuel-efficient, low-emission, 4-stroke outboard motors. We continually strive to do things others think can't be done, because true innovation comes from daring to dream.

Beyond dreaming up new products, Honda believes we have a responsibility to do everything we can to help preserve our planet. This belief is why we make significant efforts to help ensure preservation of the environment in all of our company's activities. It's why our head office in Markham, Ontario was designed and built to be LEED® (Leadership in Energy and Environmental Design) Gold Certified. It's why our Alliston, Ontario plant is ISO 14001 certified. And it's why Honda, along with our associates and families, has helped plant more than 100,000 trees in Canada over the last 9 years.

As we move forward, we will continue to honour our responsibility and tradition of turning innovative ideas into products that help make our world a better place. That's what we do. That's The Power of Dreams.

HIGHLIGHTS

- HondaJet
- Motorcycles
- Side By Side
- ASIMO
- Honda Campus
- Marine
- Power Equipment
- ATVs





We're Here. At Honda, assistance and support are always available. The team of trained technicians at your Honda dealership will help keep your vehicle in terrific shape. If you need more information or assistance relating to your warranty, call us at 1-888-9-HONDA-9. For all of the latest Honda information, including product specifications, pricing, photos and more, visit honda.ca. It has everything you need to "design" your Honda and personalize it with items from a list of quality accessories.

We're Ready to Help. When you purchase a new Honda, you automatically receive Honda Plus Roadside Assistance. This service is available to you, or any authorized driver, 24 hours a day, 7 days a week, anywhere in Canada or the continental United States. Coverage is for 3 years over an unlimited distance and includes a 24-hour toll-free Honda Plus Roadside Assistance number, mechanical breakdown towing, emergency roadside service and many other helpful features. Ask your dealer for more information.

Honda Plus Extended Warranty. Experience added protection with Honda Plus coverage that is behind you for the road ahead. With available coverage options of up to 8 years/200,000 km, you can choose the one that best suits your needs. With a plan this wide-ranging, the only thing that's uncertain is where it will take you.

Honda Financial Services. Whether you buy or lease a Honda, Honda Financial Services can assist you with the process. Ask your dealer which lease or purchase plan best suits your needs.

New Honda Vehicle Warranty. The Honda warranty protection makes Power Train components a minor concern with the Honda 5-year/100,000-km No Nonsense Warranty. In addition to the Honda 5-year/100,000-km No Nonsense Warranty, you and your new Honda are protected by a Honda 3-year/60,000-km Distributor's Warranty as well as an additional series of warranties for such items as emission controls, body corrosion and more.

Genuine Honda Accessories give you the opportunity to fine-tune your new Honda just how you like it. Whether you want to turn up the style, the versatility or the exclusivity, every accessory is designed and built to adhere to the strictest Honda standards. See your dealer for full details.

Genuine Honda Replacement Parts are made to the same exacting standards as original Honda components and are guaranteed by the Genuine Honda Parts Warranty. Using Genuine Honda Parts will help to maintain the quality, reliability and performance of your vehicle.

Always use seat belts and appropriate child seats. Children 12 and under are safest when properly restrained in a rear seat. Honda reminds you to properly secure all items stored in the cargo area.

Some of the technologies described in this brochure come with limitations. See owner's manual for complete details. Specifications, features, illustrations and equipment shown in this catalogue are based on the latest available information at the time of publication. Although descriptions are believed to be correct, accuracy cannot be guaranteed. Honda Canada Inc. reserves the right to make changes at any time, without notice or obligation, in colours, specifications, accessories, materials and models. Accessories and packages are subject to inventory availability. Honda reserves the right to terminate or change any of the services and/or features at any time, for any reason. Some features require registration. Certain features may transmit to Honda and/or other service providers a vehicle's location, operating conditions or other information that may be tied to the vehicle identification number (VIN) and can be combined to track a vehicle. For Honda's data use and privacy policy, see www.honda.ca/privacy. For Android Auto™ data use and privacy policy, see Terms and Privacy Policy for Android Auto™ app or contact Google Inc. at www.google.com. For Apple CarPlay™ data use and privacy policy, see Terms and Privacy Policy for Apple CarPlay™ or contact Apple Inc. at www.apple.com. Some vehicles are shown with optional equipment. Some vehicles shown are U.S. models. Canadian specifications may vary. Android Auto is a trademark of Google Inc. Apple CarPlay and Siri are trademarks of Apple Inc. Bluetooth is a registered trademark of SIG Inc. HomeLink and HandsFreeLink are registered trademarks or trademarks of Johnson Controls Technology. HD Radio™ is a proprietary trademark of iBiquity Digital Corp. LEED® is a registered trademark of the U.S. Green Building Council, licensed to the Canada Green Building Council for use in Canada. Windows Media is a registered trademark of Microsoft Corporation. © Sirius XM Canada Inc. "SiriusXM", the SiriusXM logo, channel names and logos are trademarks of SiriusXM Radio Inc. and are used under licence. Honda, Accord, i-VTEC, Advanced Compatibility Engineering, ACE, Collision Mitigation Braking System, CMBS, Drive-by-Wire Throttle System, Earth Dreams, Eco Assist, HondaLink, Honda Satellite-Linked Navigation System, Honda Sensing, LaneWatch, Maintenance Minder, PGM-FI, Smartvent, Variable Cylinder Management, VCM, VSA, The Power of Dreams, HondaJet and ASIMO are trademarks of Honda Motor Co., Ltd.

Sedan

ENGINE	LX	SPORT	EX-L	TOURING	EX-L V6	TOURING V6
2.4-litre, 16-valve, Direct Injection DOHC, i-VTEC® 4-cylinder	•	•	•	•	•	•
3.5-litre, 24-valve, SOHC, i-VTEC® V6	•	•	•	•	•	•
Horsepower @ rpm ¹	185 @ 6400	189 @ 6400	185 @ 6400	185 @ 6400	278 @ 6200	278 @ 6200
Torque (lb.-ft. @ rpm) ¹	181 @ 3900	182 @ 3900	181 @ 3900	181 @ 3900	252 @ 4900	252 @ 4900
Displacement (cc)	2356	2356	2356	2356	3471	3471
Emissions rating MT/CVT (L4) AT (V6)	Tier 3 Bin 125 / Tier 3 Bin 30	Tier 3 Bin 125 / Tier 3 Bin 30	NA / Tier 3 Bin 30	Tier 3 Bin 125 / Tier 3 Bin 30	NA / Tier 3 Bin 125	NA / Tier 3 Bin 125
Bore and stroke (mm)	87 x 99	87 x 99	87 x 99	87 x 99	89 x 93	89 x 93
Compression ratio	11.1:1	11.1:1	11.1:1	11.1:1	10.5:1	10.5:1
Eco Assist™ system	•	•	•	•	•	•
Drive-by-Wire Throttle System™	•	•	•	•	•	•
Multi-Point Programmed Fuel Injection system (PGM-FI®)	•	•	•	•	•	•
Direct injection	•	•	•	•	•	•
Variable Cylinder Management® (VCM®)	•	•	•	•	•	•
Recommended fuel	Regular	Regular	Regular	Regular	Regular	Regular

DRIVETRAIN	LX	SPORT	EX-L	TOURING	EX-L V6	TOURING V6
6-speed automatic transmission (AT) with Grade Logic Control	•	•	•	•	•	•
6-speed manual transmission (MT)	•	•	•	•	•	•
Amplitude Reactive Dampers	•	•	•	•	•	•
Continuously variable transmission (CVT)	Available	Available	•	Available	•	•
ECON mode button	•	•	•	•	•	•
Front-wheel drive	•	•	•	•	•	•
Steering wheel-mounted paddle shifters	•	Available	•	•	•	•

CHASSIS	LX	SPORT	EX-L	TOURING	EX-L V6	TOURING V6
17" aluminum-alloy wheels	•	•	•	•	•	•
19" aluminum-alloy wheels	•	•	•	•	•	•
All-season tires	P215/55 R17 94V	P235/40 R19 96V	P215/55 R17 94V	P235/40 R19 96V	P215/55 R17 94V	P235/40 R19 96V
Electric power-assisted rack-and-pinion steering (EPS)	•	•	•	•	•	•
Front strut tower brace	•	•	•	•	•	•
MacPherson strut front suspension	•	•	•	•	•	•
Multi-link independent rear suspension	•	•	•	•	•	•
Power-assisted, ventilated front/solid rear disc brakes	•	•	•	•	•	•
Steering wheel turns, lock-to-lock	2.54	2.46	2.54	2.46	2.55	2.47
Stabilizer bars – front and rear (mm)	17/14	17/14	17/14	17/14	19/15	19/15
Temporary spare tire	T135/90D16 102M	T135/80D17 103M	T135/90D16 102M	T135/80D17 103M	T135/90D16 102M	T135/80D17 103M

ACTIVE SAFETY	LX	SPORT	EX-L	TOURING	EX-L V6	TOURING V6
4-wheel Anti-lock Braking System (ABS) ²	•	•	•	•	•	•
Brake Assist	•	•	•	•	•	•
Collision Mitigation Braking System™ (CMBS®) ²	Honda Sensing™ model*	Honda Sensing™ model*	•	CVT model	•	•
Electronic Brake-force Distribution (EBD)	•	•	•	•	•	•
Forward Collision Warning (FCW) system ²	Honda Sensing™ model*	Honda Sensing™ model*	•	CVT model	•	•
Hill Start Assist ²	•	•	•	•	•	•
LED daytime running lights	•	•	•	•	•	•
Tire Pressure Monitoring System (TPMS) ³ - indirect	•	•	•	•	•	•
Lane Departure Warning (LDW) system ²	Honda Sensing™ model*	Honda Sensing™ model*	•	CVT model	•	•
Road Departure Mitigation (RDM) system ²	Honda Sensing™ model*	Honda Sensing™ model*	•	CVT model	•	•
Vehicle Stability Assist ² (VSA®) with Traction Control	•	•	•	•	•	•

*Honda Sensing™ suite of safety and driver assist technologies are only available on automatic transmission vehicles.

PASSIVE SAFETY	LX	SPORT	EX-L	TOURING	EX-L V6	TOURING V6
3-point seat belts with front automatic tensioning system	•	•	•	•	•	•
Front height-adjustable seat belt anchors	•	•	•	•	•	•
Next-Generation Advanced Compatibility Engineering™ (ACE™) body structure	•	•	•	•	•	•
Childproof rear door locks	•	•	•	•	•	•
Dual-stage, multiple-threshold front airbags (SRS)	•	•	•	•	•	•
HondaLink™ Assist Automatic Emergency Response System ^{2,4,5}	•	•	•	•	•	•
Side curtain airbags with rollover sensor system	•	•	•	•	•	•
Smartvent™ side airbags	•	•	•	•	•	•
Lower Anchors and Tethers for Children (LATCH)	•	•	•	•	•	•

DRIVER ASSIST TECHNOLOGY	LX	SPORT	EX-L	TOURING	EX-L V6	TOURING V6
Adaptive Cruise Control (ACC) ²	Honda Sensing™ model*	Honda Sensing™ model*	•	CVT model	•	•
Lane Keeping Assist System (LKAS) ²	Honda Sensing™ model*	Honda Sensing™ model*	•	CVT model	•	•
Auto high beam	•	•	•	•	•	•
Honda LaneWatch™ blind spot display ²	•	•	•	•	•	•

*Honda Sensing™ suite of safety and driver assist technologies are only available on automatic transmission vehicles.

Sedan

EXTERIOR	LX	SPORT	EX-L	TOURING	EX-L V6	TOURING V6
Body-coloured door handles	•	•	•	•	•	•
Body-coloured heated power door mirrors including expanded view driver's mirror	•	•	•	•	•	•
Folding door mirrors	•	•	•	•	•	•
Mirror-integrated LED turn signal indicators	•	•	•	•	•	•
Chrome door handles	•	•	•	•	•	•
Chrome grille	•	•	•	•	•	•
Dual exhaust with chrome finishers	•	•	•	•	•	•
LED fog lights	•	•	•	•	•	•
Front splash guards	•	•	•	•	•	•
LED brake lights	•	•	•	•	•	•
LED taillights	•	•	•	•	•	•
One-touch power moonroof with tilt feature	•	•	•	•	•	•
Projector-beam halogen headlights	With auto-on/off	With auto-on/off	With auto-on/off	With auto-on/off	With auto-on/off	With auto-on/off
LED headlights	•	•	•	With auto-on/off	•	With auto-on/off
LED front turn indicators	•	•	•	•	•	•
Rain-sensing windshield wipers	•	•	•	•	•	•
Rear deck lid spoiler	•	•	•	•	•	•
Rear window defroster	•	•	•	•	•	•
Side sill garnish	•	•	•	•	•	•
Speed-sensing, variable intermittent windshield wipers	•	•	•	•	•	•

COMFORT & CONVENIENCE	LX	SPORT	EX-L	TOURING	EX-L V6	TOURING V6
12-volt power outlet	2	2	2	2	2	2
Active Noise Cancellation (ANC)	•	•	•	•	•	•
Aluminum-trimmed sport pedals	•	•	•	•	•	•
Dual-zone automatic climate control with air-filtration system	•	•	•	•	•	•
Auto-dimming rearview mirror	•	•	•	•	•	•
Cargo area light	•	•	•	•	•	•
Centre console and storage compartment	•	•	•	•	•	•
Compass	•	•	•	•	•	•
Driver's and front passenger's illuminated vanity mirrors	•	•	•	•	•	•
Driver's and front passenger's seatback pockets	•	•	•	•	•	•
Display Audio System ² with Honda Satellite-Linked Navigation System™ ^{2,2} and bilingual Voice Recognition	•	•	•	•	•	•
Exterior temperature indicator	•	•	•	•	•	•
Front and rear beverage holders	•	•	•	•	•	•
Front and rear door pockets	•	•	•	•	•	•
HandsFreeLink™-bilingual Bluetooth® wireless mobile phone interface ^{2,4} with steering wheel-mounted controls	•	•	•	•	•	•
HomeLink® remote system ⁶	•	•	•	•	•	•
Body-coloured front and rear parking sensors	•	•	•	•	•	•
Map lights	•	•	•	•	•	•
Multi-angle rearview camera ² with dynamic guidelines	•	•	•	•	•	•
One-touch turn signals	•	•	•	•	•	•
Power door locks	•	•	•	•	•	•
Power windows with auto-up/down driver front window	•	•	•	•	•	•
Power windows with auto-up/down driver and front passenger window	•	•	•	•	•	•
Proximity key entry and pushbutton start	•	•	•	•	•	•
Remote entry system	•	•	•	•	•	•
Rear console ventilation	•	•	•	•	•	•
Rear-seat centre armrest with cupholder	•	•	•	•	•	•
Rear-seat heater ducts	•	•	•	•	•	•
Remote engine starter	•	CVT model	•	CVT model	•	•
Maintenance Minder™ system	•	•	•	•	•	•
Steering wheel-mounted controls (cruise control, audio, telephone, multi-information display)	•	•	•	•	•	•
Sunglasses holder	•	•	•	•	•	•
Security system	•	•	•	•	•	•
Immobilizer theft-deterrent system	•	•	•	•	•	•
Wireless charging	•	•	•	•	•	•
Tilt and telescopic steering column	•	•	•	•	•	•

SEATING & TRIM	LX	SPORT	EX-L	TOURING	EX-L V6	TOURING V6
Driver's seat position memory	•	•	•	•	•	•
Driver's seat with 10-way power adjustment including power lumbar support	•	•	•	•	•	•
Floor mats	•	•	•	•	•	•
60/40 split fold-down rear seatback	•	•	•	•	•	•
Front passenger's seat with 4-way manual adjustment	•	•	•	•	•	•
Front passenger's seat with 4-way power adjustment	•	•	•	•	•	•
Heated front seats	•	•	•	•	•	•
Heated rear seats	•	•	•	•	•	•
Perforated leather-trimmed seating surfaces	•	•	•	•	•	•
Leather/fabric combi seating surfaces	•	•	•	•	•	•
Leather-wrapped steering wheel	•	•	•	•	•	•

Sedan

ENTERTAINMENT	LX	SPORT	EX-L	TOURING	EX-L V6	TOURING V6
i-MID (intelligent Multi-Information Display)	•	•	•	•	•	•
160-watt AM/FM/CD audio system with MP3/Windows Media®	•					
Audio playback capability and 6 speakers						
360-watt AM/FM/CD Premium audio system with MP3/Windows Media®		•	•	•	•	•
Audio playback capability and 7 speakers including subwoofer						
Apple CarPlay™ ^{2,4} / Android Auto™ ^{2,4}	•	•	•	•	•	•
Bluetooth® Streaming Audio ^{2,4}	•	•	•	•	•	•
Display Audio System ² with HondaLink™ ^{2,4}	•	•	•	Including Navigation ^{2,7}	•	Including Navigation ^{2,7}
HD Radio™ ⁹				•		•
Siri Eyes Free compatibility ^{2,4}	•	•	•	•	•	•
Illuminated steering wheel-mounted audio controls	•	•	•	•	•	•
USB device connectors ⁴	2	2	2	2	2	2
SMS text message ^{2,4} / E-mail function ^{2,4}	•	•	•	•	•	•
SiriusXM™ ⁹			•	•	•	•
Wi-Fi tethering ⁴	•	•	•	•	•	•

FUEL ECONOMY ¹⁰ (L/100 KM)	LX	SPORT	EX-L	TOURING	EX-L V6	TOURING V6
Automatic transmission (City/Hwy/Combined)					11.3/7.0/9.4	11.3/7.0/9.4
Manual transmission (City/Hwy/Combined)	10.3/7.2/8.9	10.3/7.2/8.9		10.3/7.2/8.9		
Continuously variable transmission (City/Hwy/Combined)	8.6/6.4/7.6	9.1/6.8/8.0	8.6/6.4/7.6	8.6/6.4/7.6		

DIMENSIONS	LX	SPORT	EX-L	TOURING	EX-L V6	TOURING V6
Cargo volume (L)	447	439	439	439	439	439
Curb weight – MT/CVT (L4) AT (V6) (kg)	1466/1497/1500 (Honda Sensing™ model)	1507/15381541 (Honda Sensing™ model)	NA/1530	1524/1558	NA/1609	NA/1643
Fuel tank capacity (L)	65	65	65	65	65	65
Ground clearance – no-load/full-load (mm)	146/110	146/110	141/110	141/110	141/110	141/110
Headroom – front/rear (mm)	994/952	955/940	955/940	955/940	955/940	955/940
Height (mm)	1465	1465	1465	1465	1465	1465
Hip room – front/rear (mm)	1412/1389	1412/1389	1412/1389	1412/1389	1412/1389	1412/1389
Legroom – front/rear (mm)	1079/977	1079/977	1079/977	1079/977	1079/977	1079/977
Length (mm)	4907	4907	4907	4907	4907	4907
Passenger volume (L)	2922	2854	2854	2854	2854	2854
Shoulder room – front/rear (mm)	1489/1435	1489/1435	1489/1435	1489/1435	1489/1435	1489/1435
Track – front/rear (mm)	1594/1601	1584/1593	1584/1591	1584/1593	1584/1591	1584/1593
Turning radius (m) (Curb-to-Curb)	5.81	6.03	5.81	6.03	5.81	6.03
Wheelbase (mm)	2775	2775	2775	2775	2775	2775
Width (mm)	1849	1849	1849	1849	1849	1849
Width – including mirrors/mirrors folded (mm)	2051/1856	2084/1858	2084/1858	2084/1858	2084/1858	2084/1858

Coupe

ENGINE	EX	TOURING	TOURING V6
2.4-litre, 16-valve, Direct Injection DOHC, i-VTEC® 4-cylinder	•	•	
3.5-litre, 24-valve, SOHC, i-VTEC® V6			•
Horsepower @ rpm ¹	185 @ 6400	185 @ 6400	278 @ 6200
Torque (lb.-ft. @ rpm) ¹	181 @ 3900	181 @ 3900	252 @ 4900 (AT) 251 @ 5300 (MT)
Displacement (cc)	2356	2356	3471
Emissions rating MT/CVT (L4) or AT (V6)	Tier 3 Bin 125/Tier 3 Bin 30	Tier 3 Bin 125/Tier 3 Bin 30	Tier 3 Bin 125/Tier 3 Bin 125
Bore and stroke (mm)	87 x 99	87 x 99	89 x 93
Compression ratio	11.1:1	11.1:1	10.5:1 (AT)/10:1 (MT)
Active Control Engine Mount (ACM) system			•
Eco Assist™ system	•	•	•
Drive-by-Wire Throttle System™	•	•	•
Multi-Point Programmed Fuel Injection system (PGM-FI®)			•
Direct injection	•	•	
Variable Cylinder Management® (VCM®)			AT only
Recommended fuel	Regular	Regular	Regular

DRIVETRAIN	EX	TOURING	TOURING V6
6-speed automatic transmission (AT) with Grade Logic Control			•
6-speed manual transmission (MT)	•	•	•
Continuously variable transmission (CVT)	Available	Available	
Amplitude Reactive Dampers			•
ECON mode button	•	•	•
Front-wheel drive	•	•	•
Steering wheel-mounted paddle shifters (CVT)	Available	Available	Available

BODY/SUSPENSION/CHASSIS	EX	TOURING	TOURING V6
18" aluminum-alloy wheels	•		
19" aluminum-alloy wheels		•	•
All-season tires	P235/45 R18 94V	P235/40 R19 96V	P235/40 R19 96V
Electric power-assisted rack-and-pinion steering (EPS)	•	•	•
Front strut tower brace	•	•	•
MacPherson strut front suspension	•	•	•
Multi-link independent rear suspension	•	•	•
Power-assisted, ventilated front/solid rear disc brakes	•	•	•
Steering wheel turns, lock-to-lock	2.46	2.46	2.47
Stabilizer bars – front and rear (mm)	18/16	18/16	19/16
Temporary spare tire	T135/90D16 102M	T135/80D17 103M	T135/80D17 103M

ACTIVE SAFETY	EX	TOURING	TOURING V6
4-wheel Anti-lock Braking System (ABS) ²	•	•	•
Brake Assist	•	•	•
Collision Mitigation Braking System™ (CMBS®) ²	Honda Sensing™ model*	CVT model	AT model
Electronic Brake-force Distribution (EBD)	•	•	•
Forward Collision Warning (FCW) system ²	Honda Sensing™ model*	CVT model	AT model
Hill Start Assist ²	•	•	•
LED daytime running lights	•	•	•
Tire Pressure Monitoring System (TPMS) ³ - indirect	•	•	•
Lane Departure Warning (LDW) system ²	Honda Sensing™ model*	CVT model	AT model
Road Departure Mitigation (RDM) system ²	Honda Sensing™ model*	CVT model	AT model
Vehicle Stability Assist ² (VSA®) with Traction Control	•	•	•

*Honda Sensing™ suite of safety and driver assist technologies are only available on automatic transmission vehicles.

PASSIVE SAFETY	EX	TOURING	TOURING V6
3-point seat belts with automatic tensioning system	•	•	•
Next-generation Advanced Compatibility Engineering™ (ACE™) body structure	•	•	•
Dual-stage, multiple-threshold front airbags (SRS)	•	•	•
HondaLink™ Assist Automatic Emergency Response System ^{2,4,5}	•	•	•
Side curtain airbags with rollover sensor system	•	•	•
Smartvent™ side airbags	•	•	•
Lower Anchors and Tethers for Children (LATCH)	•	•	•
Security system	•	•	•

DRIVER ASSIST TECHNOLOGY	EX	Touring	Touring V6
Adaptive Cruise Control (ACC) ²	Honda Sensing™ model*	CVT model	AT model
Lane Keeping Assist System (LKAS) ²	Honda Sensing™ model*	CVT model	AT model
Auto high beam		•	•
Honda LaneWatch™ blind spot display ²	•	•	•

*Honda Sensing™ suite of safety and driver assist technologies are only available on automatic transmission vehicles.

^[1] Horsepower and torque calculations reflect SAE net, Rev. 08/04, SAE J1349 procedures

^[2] None of the features we describe are intended to replace the driver’s responsibility to exercise due care while driving. Drivers should not use handheld devices or operate certain vehicle features unless it is safe and legal to do so. Some features have technological limitations. For additional feature information, limitations and restrictions, please visit www.honda.ca/disclaimers and refer to the vehicle’s Owner’s Manual.

^[3] For optimal tire wear and performance, the pressure should be checked regularly with a tire gauge. Do not rely solely on the monitor system.

^[4] Only compatible with certain devices and operating systems. Cellular data and/or voice charges may apply, including roaming charges and/or other amounts charged by your wireless carrier.

^[5] Operation requires wireless mobile phone to be paired with the vehicle. Operation is dependent upon cellular data and/or voice connection availability and GPS satellite signal reception.

^[6] HomeLink® can be programmed with codes of up to three remote-control devices (e.g., garage-door opener, home security system, etc.).

^[7] Map database covers major metropolitan areas in Canada and the 48 contiguous U.S. states.

^[8] Coverage varies by market.

^[9] Only available in certain areas. Includes a no-charge trial of three months.

^[10] Estimated fuel economy based on Government of Canada’s 5-cycle testing method. Your actual fuel consumption will vary based on driving habits and other factors – use for comparison only. For more information on 5-cycle testing, visit http://vehicles.nrcan.gc.ca.

^[11] The information in this document is intended to provide a general overview of the vehicle's features and specifications. It is not intended to be used as a substitute for the vehicle's Owner's Manual.

Coupe

EXTERIOR	EX	TOURING	TOURING V6
Body-coloured heated power door mirrors including expanded view driver's mirror	•	•	•
Folding door mirrors	•	•	•
Mirror-integrated LED turn signal indicators	•	•	•
Chrome door handles	•	•	•
Dual exhaust with chrome finishers			•
LED fog lights	•	•	•
Front splash guards	•	•	•
LED taillights	•	•	•
One-touch power moonroof with tilt feature	•	•	•
Projector-beam halogen headlights	With auto-on/off		
LED headlights		With auto-on/off	With auto-on/off
LED front turn indicators		•	•
Rain-sensing windshield wipers		•	•
Rear deck lid spoiler	•	•	•
Rear window defroster	•	•	•
Speed-sensing, variable intermittent windshield wipers	•	•	•

COMFORT & CONVENIENCE	EX	TOURING	TOURING V6
12-volt power outlet	2	2	2
Active Noise Cancellation (ANC)	•	•	•
Auto-dimming rearview mirror		•	•
Body-coloured front and rear parking sensors		•	•
Cargo area light	•	•	•
Centre console and storage compartment	•	•	•
Driver's and front passenger's illuminated vanity mirrors	•	•	•
Driver's and front passenger's seatback pockets	•	•	•
Dual-zone automatic climate control with air-filtration system	•	•	•
Display Audio System ² with Honda Satellite-Linked Navigation System ^{TM2,7} and bilingual Voice Recognition		•	•
Exterior temperature indicator	•	•	•
Front and rear beverage holders	•	•	•
Front door pockets	•	•	•
HandsFreeLink TM -bilingual Bluetooth [®] wireless mobile phone interface ^{2,4} with steering wheel-mounted controls	•	•	•
HomeLink [®] remote system ⁶		•	•
Map lights	•	•	•
Multi-angle rearview camera ² with dynamic guidelines	•	•	•
One-touch turn signals	•	•	•
Power door locks	•	•	•
Power windows with auto-up/down driver's and front passenger's windows	•	•	•
Proximity key entry and pushbutton start	•	•	•
Remote engine starter	CVT model	CVT model	AT model
Maintenance Minder TM system	•	•	•
Security system	•	•	•
Immobilizer theft-deterrent system	•	•	•
Steering wheel-mounted cruise control	•	•	•
Sunglasses holder	•	•	•
Wireless charging		•	•
Tilt and telescopic steering column	•	•	•

SEATING & TRIM	EX	TOURING	TOURING V6
Driver's seat position memory		•	•
Driver's seat with 10-way power adjustment including power lumbar support	•	•	•
Floor mats	•	•	•
Fold-down rear seatback with lock	•	•	•
Front passenger's seat with 4-way manual adjustment	•	•	•
Heated front seats	•	•	•
Perforated leather-trimmed seating surfaces		•	•
Leather-wrapped steering wheel		•	•

ENTERTAINMENT	EX	TOURING	TOURING V6
i-MID (intelligent Multi-Information Display)	•	•	•
360-watt AM/FM/CD Premium audio system with MP3/Windows Media [®] Audio playback capability and 7 speakers including subwoofer	•	•	•
Apple CarPlay ^{TM2,4} / Android Auto ^{TM2,4}	•	•	•
Bluetooth [®] Streaming Audio ^{2,4}	•	•	•
Display Audio System ² with HondaLink ^{TM2,4}	•	Including Navigation ^{2,7}	Including Navigation ^{2,7}
HD Radio ^{TM8}		•	•
Siri Eyes Free compatibility ^{2,4}	•	•	•
Illuminated steering wheel-mounted audio controls	•	•	•
USB device connector ¹	2	2	2
SMS text message ^{2,4} / E-mail function ^{2,4}	•	•	•
SiriusXM ^{TM9}	•	•	•
Wi-Fi tethering ¹	•	•	•

FUEL ECONOMY ¹⁰ (L/100 KM)	EX	TOURING	TOURING V6
Automatic transmission (City/Hwy/Combined)			11.4/7.3/9.5
Manual transmission (City/Hwy/Combined)	10.3/7.2/8.9	10.3/7.2/8.9	12.9/8.3/10.9
Continuously variable transmission (City/Hwy/Combined)	9.1/6.8/8.0	9.1/6.8/8.0	

Coupe

DIMENSIONS	EX	TOURING	TOURING V6
Cargo volume (L)	379	379	379
Curb weight – MT/CVT (L4) AT (V6) (kg)	1494/1525/ 1528 (Honda Sensing TM model)	1497/1531	1559/1619
Fuel tank capacity (L)	65	65	65
Ground clearance – no-load/full-load (mm)	146/110	146/110	141/110
Headroom – front/rear (mm)	944/944	944/944	944/944
Height (mm)	1436	1436	1436
Hip room – front/rear (mm)	1406/1423	1406/1423	1406/1423
Legroom – front/rear (mm)	1073/855	1073/855	1073/855
Length (mm)	4832	4832	4832
Passenger volume (L)	2636	2636	2636
Shoulder room – front/rear (mm)	1497/1400	1497/1400	1497/1400
Track – front/rear (mm)	1584/1593	1584/1593	1584/1593
Turning radius (m) (Curb-to-Curb)	5.95	5.95	5.95
Wheelbase (mm)	2725	2725	2725
Width (mm)	1854	1854	1854
Width – including mirrors/mirrors folded (mm)	2085/1859	2085/1859	2085/1859

- Horsepower and torque calculations reflect SAE net, Rev. 08/04, SAE J1349 procedures.
- None of the features we describe are intended to replace the driver's responsibility to exercise due care while driving. Drivers should not use handheld devices or operate certain vehicle features unless it is safe and legal to do so. Some features have technological limitations. For additional feature information, limitations and restrictions, please visit www.honda.ca/disclaimers and refer to the vehicle's Owner's Manual.
- For optimal tire wear and performance, the pressure should be checked regularly with a tire gauge. Do not rely solely on the monitor system.
- Only compatible with certain devices and operating systems. Cellular data and/or voice charges may apply, including roaming charges and/or other amounts charged by your wireless carrier.
- Operation requires wireless mobile phone to be paired with the vehicle. Operation is dependent upon cellular data and/or voice connection availability and GPS satellite signal reception.
- HomeLink[®] can be programmed with codes of up to three remote-control devices (e.g., garage-door opener, home security system, etc.).
- Map database covers major metropolitan areas in Canada and 48 contiguous U.S. states.
- Coverage varies by market.
- Only available in certain areas. Includes a no-charge trial of three months.
- Estimated fuel economy based on Government of Canada's 5-cycle testing method. Your actual fuel consumption will vary based on driving habits and other factors – use for comparison only. For more information on 5-cycle testing, visit <http://vehicles.nrcan.gc.ca>.

Sedan Trims

ACCORD LX SEDAN

KEY FEATURES:

- 185-hp¹, 2.4-litre, 16-valve, Direct Injection DOHC, i-VTEC[®] 4-cylinder engine
- 160-watt AM/FM/CD audio system with MP3/Windows Media[®] Audio playback capability and 6 speakers
- 17" aluminum-alloy wheels
- 4-wheel Anti-lock Braking System² (ABS)
- 6-speed manual transmission (MT)
- 60/40 split fold-down rear seatback
- Active Noise Cancellation (ANC)
- Apple CarPlay^{™2,3} / Android Auto^{™2,3}
- Available continuously variable transmission (CVT)
- Bluetooth[®] Streaming Audio^{2,3}
- Body-coloured heated power door mirrors including expanded view driver's mirror
- Display Audio System² with HondaLink^{™2,3}
- Driver's seat with 10-way power adjustment including power lumbar support
- Dual-stage, multiple-threshold front airbags (SRS)
- Dual-zone automatic climate control with air-filtration system
- Eco Assist[™] system/ECON mode button
- Electronic Brake-force Distribution (EBD)
- Front passenger's seat with 4-way manual adjustment
- HandsFreeLink[™]-bilingual Bluetooth[®] wireless mobile phone interface^{2,3} with steering wheel-mounted controls
- Heated front seats
- i-MID (intelligent Multi-Information Display)
- LED daytime running lights
- LED taillights
- MacPherson strut front suspension
- Multi-angle rearview camera² with dynamic guidelines
- Multi-link independent rear suspension
- Projector-beam halogen headlights with auto-on/off
- Remote entry system
- Security system
- Side curtain airbags with rollover sensor system
- Siri Eyes Free compatibility^{2,3}
- Smartvent[™] side airbags
- Tilt and telescopic steering column
- Tire Pressure Monitoring System⁴ (TPMS)
- USB device connectors³ (2)
- Vehicle Stability Assist² (VSA[®]) with Traction Control
- Wi-Fi tethering³
- Available Honda Sensing[™] Technologies (CVT model)

ACCORD SPORT SEDAN

ADDS TO OR REPLACES LX FEATURES:

- 189-hp¹, 2.4-litre, 16-valve, Direct Injection DOHC, i-VTEC[®] 4-cylinder engine
- Available steering wheel-mounted paddle shifters (with CVT, on Sport only)
- 19" aluminum-alloy wheels
- 360-watt AM/FM/CD Premium audio system with MP3/Windows Media[®] Audio playback capability and 7 speakers including subwoofer
- Chrome door handles
- Dual exhaust with chrome finishers
- Honda LaneWatch[™] blind spot display²
- Leather-wrapped steering wheel
- Leather/fabric combi seating surfaces
- LED fog lights
- Mirror-integrated LED turn signal indicators
- One-touch power moonroof with tilt feature
- Proximity key entry and pushbutton start
- Rear deck lid spoiler
- Remote engine starter (CVT model)
- Side sill garnish
- Available Honda Sensing[™] Technologies (CVT model)

ACCORD EX-L SEDAN

ADDS TO OR REPLACES SPORT FEATURES:

- 185-hp¹, 2.4-litre, 16-valve, Direct Injection DOHC, i-VTEC[®] 4-cylinder engine
- Continuously variable transmission (CVT)
- 17" aluminum-alloy wheels
- Auto-dimming rearview mirror
- Driver's seat position memory
- Front passenger's seat with 4-way power adjustment
- Heated rear seats
- Perforated leather-trimmed seating surfaces
- Rear console ventilation
- SiriusXM^{™5}
- Honda Sensing[™] Technologies

ACCORD TOURING SEDAN

ADDS TO OR REPLACES EX-L FEATURES:

- 19" aluminum-alloy wheels
- Auto high beam
- Available continuously variable transmission (CVT)
- Body-coloured front and rear parking sensors
- Display Audio System² with Honda Satellite-Linked Navigation System^{™2,6} and bilingual Voice Recognition
- HD Radio^{™7}
- HomeLink[®] remote system⁸
- LED headlights with auto-on/off
- Rain-sensing windshield wipers
- Rear deck lid spoiler
- Side sill garnish
- Wireless charging
- Honda Sensing[™] Technologies (CVT model)

ACCORD EX-L V6 SEDAN

ADDS TO OR REPLACES EX-L FEATURES:

- 278-hp¹, 3.5-litre, 24-valve, SOHC, i-VTEC[®] V6 engine
- 6-speed automatic transmission (AT)
- with Grade Logic Control
- Dual exhaust with chrome finishers

ACCORD TOURING V6 SEDAN

ADDS TO OR REPLACES EX-L V6 FEATURES:

- 19" aluminum-alloy wheels
- Auto high beam
- Body-coloured front and rear parking sensors
- Display Audio System² with Honda Satellite-Linked Navigation System^{™2,6} and bilingual Voice Recognition
- HD Radio^{™7}
- HomeLink[®] remote system⁸
- LED headlights with auto-on/off
- Rain-sensing windshield wipers
- Rear deck lid spoiler
- Wireless charging

HONDA SENSING[™] TECHNOLOGIES

AVAILABLE ON LX (CVT), SPORT (CVT) AND TOURING (CVT), STANDARD ON EX-L, EX-L V6 AND TOURING V6

- Collision Mitigation Braking System[™] (CMBS[®])²
- Forward Collision Warning (FCW) system²
- Lane Departure Warning (LDW) system²
- Road Departure Mitigation (RDM) system²
- Adaptive Cruise Control (ACC)³
- Lane Keeping Assist System (LKAS)²

Coupe Trims

ACCORD EX COUPE

KEY FEATURES:

- 185-hp¹, 2.4-litre, 16-valve, Direct Injection DOHC, i-VTEC[®] 4-cylinder engine
- 18" aluminum-alloy wheels
- 360-watt AM/FM/CD Premium audio system with MP3/Windows Media[®] Audio playback capability and 7 speakers including subwoofer
- 4-wheel Anti-lock Braking System² (ABS)
- 6-speed manual transmission (MT)
- Active Noise Cancellation (ANC)
- Apple CarPlay^{™2,3} / Android Auto^{™2,3}
- Available continuously variable transmission (CVT)
- Bluetooth[®] Streaming Audio^{2,3}
- Body-coloured heated power door mirrors including expanded view driver's mirror
- Brake Assist
- Chrome door handles
- Display Audio System² with HondaLink^{™2,3}
- Driver's seat with 10-way power adjustment including power lumbar support
- Dual-stage, multiple-threshold front airbags (SRS)
- Dual-zone automatic climate control with air-filtration system
- Eco Assist[™] system
- Electric power-assisted rack-and-pinion steering (EPS)
- Electronic Brake-force Distribution (EBD)
- Front passenger's seat with 4-way manual adjustment
- HandsFreeLink[™]-bilingual Bluetooth[®] wireless mobile phone interface^{2,3} with steering wheel-mounted controls
- Heated front seats
- Honda LaneWatch[™] blind spot display²
- i-MID (intelligent Multi-Information Display)
- Illuminated steering wheel-mounted audio controls
- LED daytime running lights
- LED fog lights
- LED taillights
- MacPherson strut front suspension
- Multi-angle rearview camera² with dynamic guidelines
- Multi-link independent rear suspension
- One-touch power moonroof with tilt feature
- Power windows with auto-up/down driver's and front passenger's windows
- Power-assisted, ventilated front/solid rear disc brakes
- Projector-beam halogen headlights with auto-on/off
- Proximity key entry system and pushbutton start
- Rear deck lid spoiler
- Security system
- Side curtain airbags with rollover sensor system
- Siri Eyes Free compatibility^{2,3}
- SiriusXM^{™4}
- Smartvent[™] side airbags
- SMS text message^{2,3} / E-mail function^{2,3}
- Steering wheel-mounted paddle shifters (CVT)
- Tilt and telescopic steering column
- Tire Pressure Monitoring System² (TPMS)
- USB device connector³ (2)
- Vehicle Stability Assist² (VSA[®]) with Traction Control
- Wi-Fi tethering³
- Available Honda Sensing[™] Technologies (CVT model)

ACCORD TOURING COUPE

ADDS TO OR REPLACES EX FEATURES:

- 19" aluminum-alloy wheels
- Auto high beam
- Auto-dimming rearview mirror
- Body-coloured front and rear parking sensors
- Display Audio System² with Honda Satellite-Linked Navigation System^{™2,6} and bilingual Voice Recognition
- Driver's seat position memory
- HD Radio^{™7}
- HomeLink[®] remote system⁸
- Leather-wrapped steering wheel
- LED headlights with auto-on/off
- Perforated leather-trimmed seating surfaces
- Rain-sensing windshield wipers
- Wireless charging
- Honda Sensing[™] Technologies (CVT model)

ACCORD TOURING V6 COUPE

ADDS TO OR REPLACES TOURING FEATURES:

- 278-hp¹, 3.5-litre, 24-valve, SOHC, i-VTEC[®] V6 engine
- Available 6-speed automatic transmission (AT) with Grade Logic Control
- Dual exhaust with chrome finishers
- Variable Cylinder Management[®] (VCM[®]) (AT model)
- Honda Sensing[™] Technologies (AT model)

HONDA SENSING[™] TECHNOLOGIES

AVAILABLE ON EX (CVT), STANDARD ON TOURING (CVT) AND TOURING V6 (AT)

- Collision Mitigation Braking System[™] (CMBS[®])²
- Forward Collision Warning (FCW) system²
- Lane Departure Warning (LDW) system²
- Road Departure Mitigation (RDM) system²
- Adaptive Cruise Control (ACC)²
- Lane Keeping Assist System (LKAS)²

1. Horsepower and torque calculations reflect SAE net, Rev. 08/04, SAE J1349 procedures.

2. None of the features we describe are intended to replace the driver's responsibility to exercise due care while driving. Drivers should not use handheld devices or operate certain vehicle features unless it is safe and legal to do so. Some features have technological limitations. For additional feature information, limitations and restrictions, please visit www.honda.ca/disclaimers or refer to the vehicle's Owner's Manual.

3. Only compatible with certain devices and operating systems. Cellular data and/or voice charges may apply, including roaming charges and/or other amounts charged by your wireless carrier.

4. For optimal tire wear and performance, tire pressure should be checked regularly with a gauge. Do not rely solely on the monitor system.

5. Only available in certain areas. Includes a no-charge trial of three months.

6. Map database covers major metropolitan areas in Canada and 48 contiguous U.S. states.

7. Coverage varies by market.

8. HomeLink[®] can be programmed with codes of up to three remote-control devices (e.g., garage-door opener, home security system, etc.)

1. Horsepower and torque calculations reflect SAE net, Rev. 08/04, SAE J1349 procedures.

2. None of the features we describe are intended to replace the driver's responsibility to exercise due care while driving. Drivers should not use handheld devices or operate certain vehicle features unless it is safe and legal to do so. Some features have technological limitations. For additional feature information, limitations and restrictions, please visit www.honda.ca/disclaimers or refer to the vehicle's Owner's Manual.

3. Only compatible with certain devices and operating systems. Cellular data and/or voice charges may apply, including roaming charges and/or other amounts charged by your wireless carrier.

4. Only available in certain areas. Includes a no-charge trial of three months.

5. For optimal tire wear and performance, tire pressure should be checked regularly with a gauge. Do not rely solely on the monitor system.

6. Map database covers major metropolitan areas in Canada and 48 contiguous U.S. states.

7. Coverage varies by market.

8. HomeLink[®] can be programmed with codes of up to three remote-control devices (e.g., garage-door opener, home security system, etc.)

Sedan Exterior & Interior Colours

ACCORD SEDAN	LX	SPORT	EX-L	TOURING	EX-L V6	TOURING V6
White Orchid Pearl	Grey Fabric	Black Combi (Leather/Fabric)	Black Leather	Black or Ivory* Leather	Black Leather	Black or Ivory Leather
Crystal Black Pearl	Grey Fabric	Black Combi (Leather/Fabric)	Black Leather	Black Leather	Black Leather	Black Leather
Modern Steel Metallic		Black Combi (Leather/Fabric)	Black Leather	Black Leather	Black Leather	Black Leather
Obsidian Blue Pearl		Black Combi (Leather/Fabric)	Grey Leather	Grey* Leather	Grey Leather	Grey Leather
Basque Red Pearl II		Black Combi* (Leather/Fabric)		Black* Leather		Black Leather
Lunar Silver Metallic	Grey Fabric	Black Combi* (Leather/Fabric)				

*CVT only.

Coupe Exterior & Interior Colours

ACCORD COUPE	EX	TOURING	TOURING V6
White Orchid Pearl	Black Fabric	Black Leather	Black or Ivory* Leather
Crystal Black Pearl	Black Fabric	Black Leather	Black Leather
Modern Steel Metallic	Black** Fabric	Black Leather	Black Leather
San Marino Red	Black Fabric	Black Leather	Black Leather
Still Night Pearl		Ivory** Leather	Ivory* Leather

*AT only.
**CVT only.