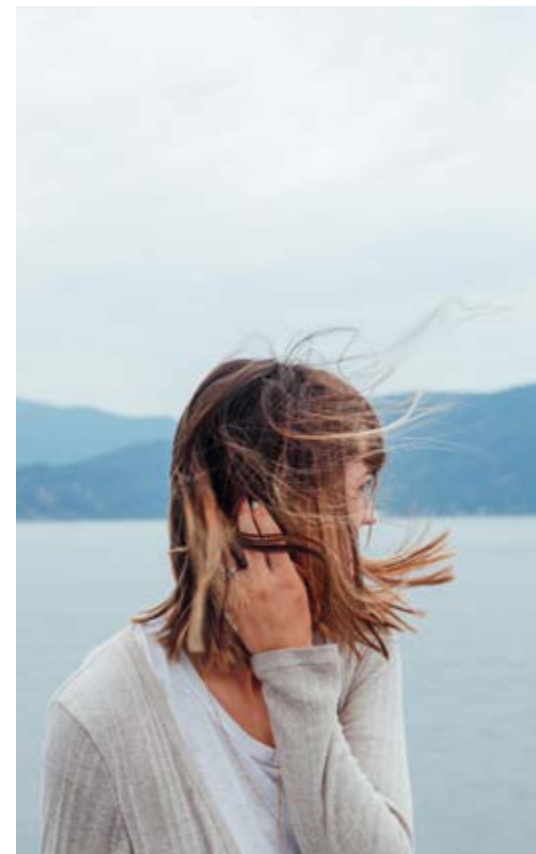


2016 CIVIC Sedan





Here's to those late nights that turn into early mornings. Those short hauls that become long drives. Those quick stops that turn out to be lifelong memories.

Overview P.1/2

Exterior P.3/4

Interior P.5/6

Technology P.7/8

Performance & Efficiency P.9/10

Honda Sensing™ Technologies P.11/12

Safety P.13/14

Accessories P.15/16

The Power of Dreams P.17/18

Warranty P.19

Specs P.20-22

Colours & Trims P.23/24



A classic, reinvented.

Who would've thought 40 years ago, the Honda Civic would've made such a big impact? 40 years later, it's still doing it. Since 1998, the Civic has been Canada's best-selling car.

The 2016 Civic is ready to change the way you view the road. It has been reimagined and redesigned inside and out. From its sporty, aggressive exterior to the luxurious, roomier interior, we thought about every detail. If fun is your middle name, the Civic now comes with two Earth Dreams™ 4-cylinder engines. Both the 1.5-litre turbocharged direct-injected 4-cylinder engine that produces 174 hp¹ or the 2.0-litre naturally-aspirated 4-cylinder engine that pumps out 158 hp¹ help make every drive a blast. Brawn aside, we've designed the new Civic to be more fuel-efficient and technologically advanced than ever. New available tech features like Apple CarPlay™^{2,3} and Android Auto™^{2,3} help you stay connected, and a wireless charging pad keeps your compatible smartphone juiced. Plus, you'll feel more aware of the road with available Honda Sensing™ technologies like Collision Mitigation Braking System™² (CMBS®) and Lane Keeping Assist System™² (LKAS). With everything you get out of the Civic, it's easy to understand why it's become a favourite in Canada.

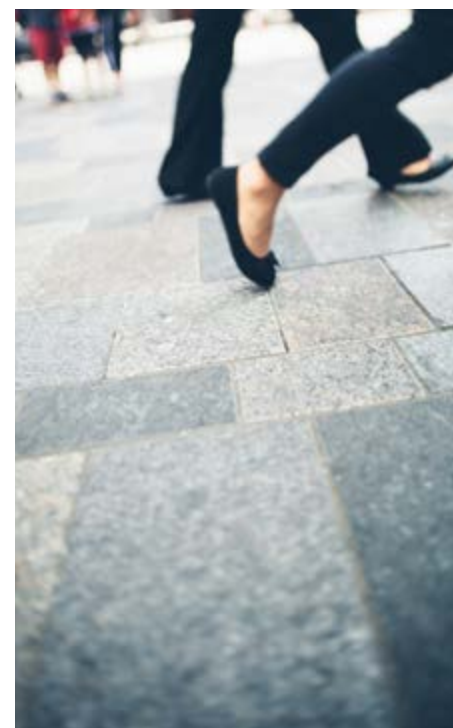
1. Horsepower and torque calculations reflect SAE net, Rev. 08/04, SAE J1349 procedures.
2. None of the features we describe are intended to replace the driver's responsibility to exercise due care while driving. Drivers should not use handheld devices or operate certain vehicle features unless it is safe and legal to do so. Some features have technological limitations. For additional feature information, limitations and restrictions, please visit www.honda.ca/disclaimers and refer to the vehicle's Owner's Manual.
3. Only compatible with certain devices and operating systems. Cellular data and/or voice charges may apply, including roaming charges and/or other amounts charged by your wireless carrier.

Feel good in its skin.

Turns out, looks can get you everywhere. Especially if you're in a Civic. It's been completely redesigned with an aggressive stance, a sportier look and sleek lines to make it look unlike any Civic before. Up front, its LED daytime running lights and available LED headlights give it a distinctive presence that helps let everyone know you're coming. We've made it lower, longer and wider, so when you're in it, you'll sit pretty on its available fashionable 17" aluminum-alloy wheels. If you want a fresh view, put down the windows, tap a button and open up the available power moonroof with tilt feature. Plus available fog lights up front and mirror-integrated LED turn signal indicators help you stand out on the road. Be proud, confidence looks good on you.



- Sleek and clean lines
- Standard LED daytime running lights and available LED headlights
- LED taillights
- Available 17" aluminum-alloy wheels
- Available rear deck lid spoiler





Looks even better with you in it.

If you thought it looked good outside, wait until you get in. Available heated front and rear seats, plus available leather trimmed seating surfaces, make it look like a hot ride and extremely easy to warm up to. Plus, the driver's seat with available 8-way power adjustment and the passenger's seat with available 4-way power adjustment finds you the right position, while the available dual-zone automatic climate control lets you and your passenger choose your own temperatures. Up front, the sleek designed available leather wrapped steering wheel with available steering wheel mounted audio and cruise controls helps you handle some of your features like changing your tunes or cranking them up. You'll notice that the Civic is now much bigger inside, but if you still need room, the available 60/40 split fold-down rear seatback folds down to help you accommodate large or bulky items. The Civic looks aggressive, but it also has a softer side, thanks to premium soft touch materials that hug the interior. You'll notice that the multi-functional centre console with sliding armrest is anything but average. It opens up to give you added convenience by storing small objects along for the ride. Whether you're headed to a concert, on a road trip or simply running around town, you'll like getting there as much as arriving.

- Available heated front and rear seats**
- Available leather trimmed seating surfaces**
- Available dual-zone automatic climate control**
- Available 60/40 split fold-down rear seatback**
- Premium soft touch materials**
- Multi-functional centre console with sliding armrest**





Your newest toy has some of its own.

Don't let the sporty styling fool you. The Civic brings the brains to back up its beauty. It's loaded with tech features and completely down for wherever the road's going to take you. Hop in, turn up the music, set your destination and go.

Honda LaneWatch™ blind spot display.

Add a little transparency to your drive with the available Honda LaneWatch™ blind spot display.¹ When you signal right, your Display Audio System¹ is engineered to show your blind spot onscreen, from a camera mounted under the passenger-side mirror. It shows you nearly four times more than a mirror alone.

Honda Satellite-Linked Navigation System™ with bilingual Voice Recognition.

Your plans change in a second, which is why the available Honda Satellite-Linked Navigation System™^{1,2} with bilingual Voice Recognition is at your beck and call. Aside from turn-by-turn directions, it also guides you with improved graphics, 3D landmark displays, highway signs, speed limit display, arrival time and lane guidance.

Multi-angle rearview camera.

Long gone are the days of having a friend direct you as you reverse. The multi-angle rearview camera¹ helps you to keep a close watch on anything that might pass by behind you and lets you see from multiple angles. It gives you three views to choose from: wide, normal and top-down.

Apple CarPlay™ and Android Auto.™

Finally, a car that loves your smartphone as much as you do. Working with the available Display Audio System, Apple CarPlay™^{1,3} and Android Auto™^{1,3} display key content from your compatible smartphone on the built-in 7-inch Display Audio System. It'll help you stay connected and add some more fun to your drive.

7-inch colour TFT centre meter display with Driver Information Interface.

In addition to displaying the vehicle speed and tachometer, the available 7-inch colour TFT centre meter display houses important vehicle information like engine oil life, trip range, warning messages and turbo booster meter (EX-T and Touring trim). It also displays your audio information and turn-by-turn directions when teamed up with available Honda Satellite-Linked Navigation System.™^{1,2}

Wireless charging.

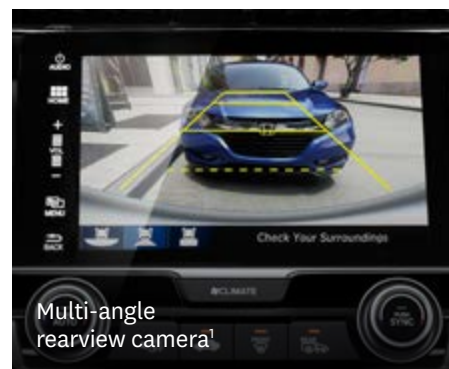
Keep your phone charged on the go. The available wireless charging pad charges your compatible smartphone without wires, cables or plugs. Simply drop it on the charging pad and, well, that's it.



Available Honda LaneWatch™ blind spot display¹



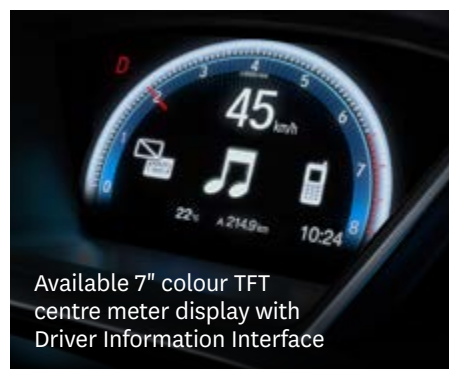
Available Honda Satellite-Linked Navigation System™^{1,2}



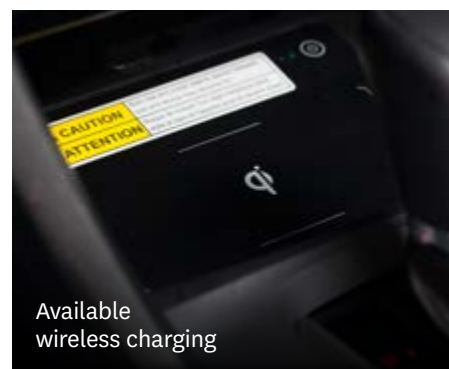
Multi-angle rearview camera¹



Available Apple CarPlay™^{1,3}



Available 7" colour TFT centre meter display with Driver Information Interface



Available wireless charging

1. None of the features we describe are intended to replace the driver's responsibility to exercise due care while driving. Drivers should not use handheld devices or operate certain vehicle features unless it is safe and legal to do so. Some features have technological limitations. For additional feature information, limitations and restrictions, please visit www.honda.ca/disclaimers and refer to the vehicle's Owner's Manual.

2. Map database covers major metropolitan areas in Canada and the 48 contiguous U.S. states.

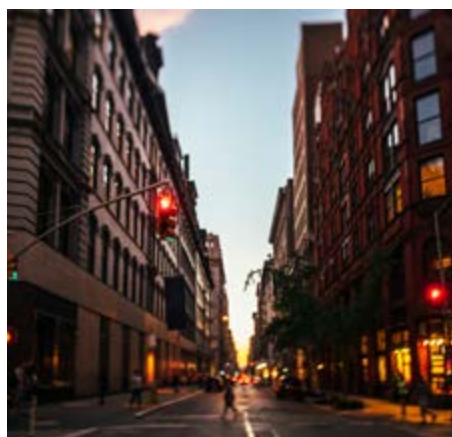
3. Only compatible with certain devices and operating systems. Cellular data and/or voice charges may apply, including roaming charges and/or other amounts charged by your wireless carrier.

Skip ready and set. This thing's ready to go.

Great power is now in your hands and under your foot. Both new engines in the Civic make long and short drives feel like joyrides. The available 1.5-litre turbocharged direct-injected 4-cylinder engine with 174 hp¹, which creates 162 lb.-ft. of torque from 1,800 – 5,500 rpm¹ and the standard 2.0-litre, 16-valve, DOHC, i-VTEC[®] 4-cylinder engine with 158 hp¹ are designed to find a balance between performance and fuel-efficiency. Teamed up with Eco Assist™ and ECON mode button, they are designed to help keep you on the road longer, and away from gas stations. If you like changing things up, the 6-speed manual transmission (MT) on the DX and LX trims is handy, but if you prefer simply putting it in drive to get on your way, the available continuously variable transmission (CVT) is for you. The Civic likes to keep things balanced. The independent strut front suspension, independent multi-link rear suspension and Agile Handling Assist combine improved handling with comfort for any humps, bumps or dips in the road. Whatever road you're on, the Civic has a grip on it with Variable Ratio Electric Power-Assisted Rack-and Pinion Steering to give your hands as much power as your right foot. No matter how you want to go there, the Civic is ready when you are.

- Available 1.5-litre turbo-charged 4-cylinder engine with 174 hp¹**
- 2.0-litre, 16-valve, i-VTEC[®] 4-cylinder engine with 158 hp¹**
- 6-speed manual transmission (MT) on DX and LX trims or available CVT**
- ECON mode button**
- Eco Assist™**

1. Horsepower and torque calculations reflect SAE net, Rev. 08/04, SAE J1349 procedures.



Engages all your senses. Then adds a few more.

We didn't just completely change the Civic or improve its power and styling, we gave it a new perspective of the road. For the first time, the Civic comes with available Honda Sensing™ technologies. These safety and driver-assistive technologies are designed to help improve the driver's situational awareness, and, in some cases, intervene to help avoid a collision or lessen its severity.

HONDA SENSING™ TECHNOLOGIES

Collision Mitigation Braking System™ (CMBS®).

To help reduce the likelihood or severity of a frontal impact, the available CMBS® is engineered to apply the brakes if you don't slow down when it senses you're at risk of a collision. If it still senses an imminent collision, CMBS® is designed to brake firmly.

Road Departure Mitigation (RDM) system.

The available Road Departure Mitigation system¹ is designed to help steer and even apply the brakes when necessary to help keep the vehicle from leaving the road.

Lane Keeping Assist System (LKAS).

The available LKAS¹ is engineered to gently correct your steering when you begin to leave a detected lane without signaling, applying torque progressively to the steering to help guide you back to the centre of the lane.

Lane Departure Warning (LDW) system.

The available LDW system¹ is designed to monitor vehicle lane position and alert you when your vehicle drifts into a new lane when you haven't signaled.

Adaptive Cruise Control (ACC) with Low-Speed Follow.

The available ACC system¹ is designed to keep a set speed and set following interval behind a vehicle detected ahead of yours, including the ability to start and stop the vehicle with the flow of traffic.

Forward Collision Warning (FCW) system.

The available FCW system¹ that is integrated with CMBS® is designed to detect the presence of vehicles in front of you and issue alerts if you're approaching with too much speed. If you fail to respond to the alerts, the CMBS® is triggered into operation.



Available Collision Mitigation Braking System™



Available Road Departure Mitigation system



Available Lane Keeping Assist System



Available Lane Departure Warning system

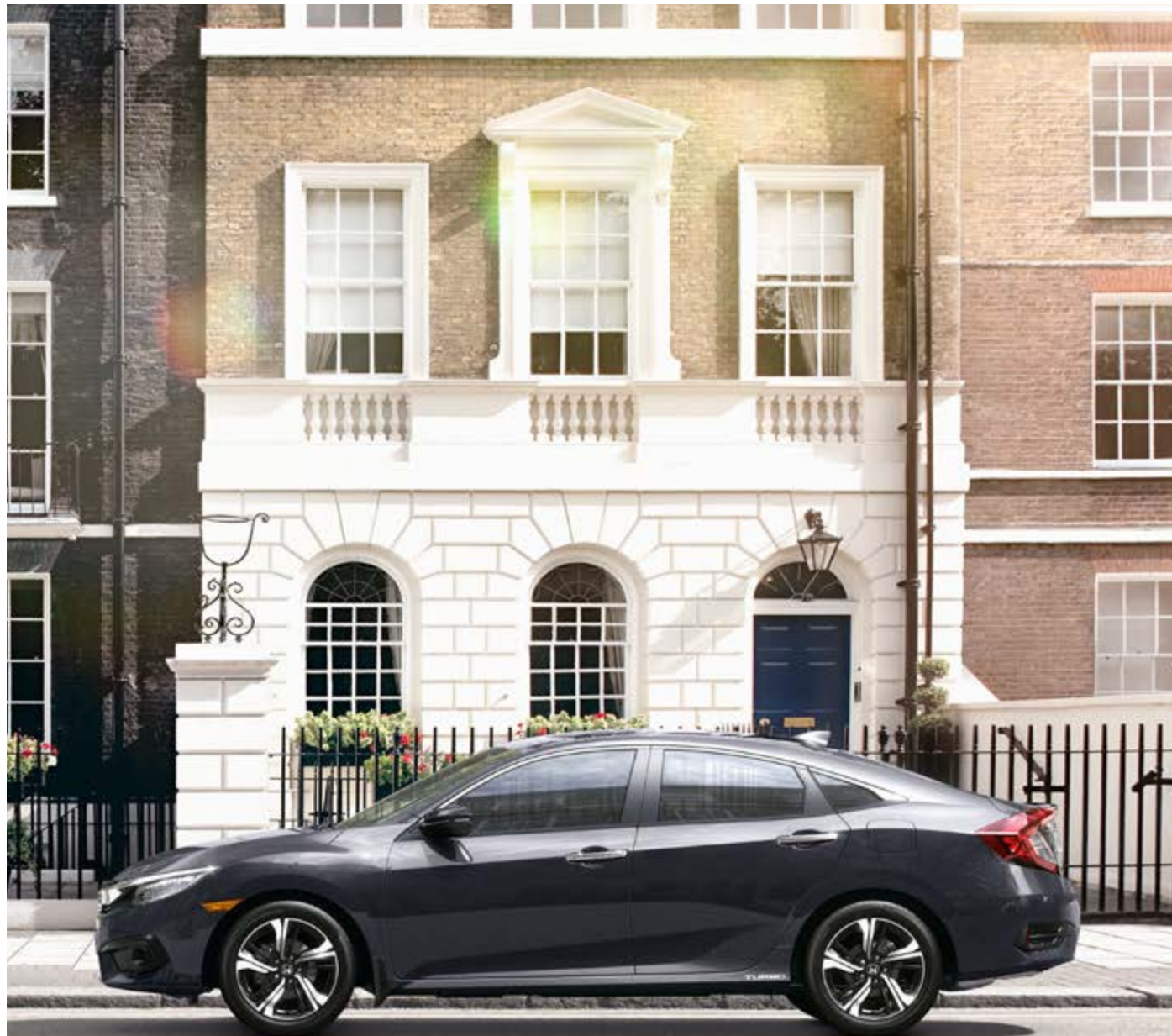


Available Adaptive Cruise Control with Low-Speed Follow



Available Forward Collision Warning system

1. None of the features we describe are intended to replace the driver's responsibility to exercise due care while driving. Drivers should not use handheld devices or operate certain vehicle features unless it is safe and legal to do so. Some features have technological limitations. For additional feature information, limitations and restrictions, please visit www.honda.ca/disclaimers and refer to the vehicle's Owner's Manual.



Solid on safety.

At Honda, we strive to provide a high level of standard safety features to help ensure the safety of occupants, other drivers and even pedestrians. This added peace of mind helps our drivers maintain the confidence to enjoy every road to the fullest.

1. None of the features we describe are intended to replace the driver's responsibility to exercise due care while driving. Drivers should not use handheld devices or operate certain vehicle features unless it is safe and legal to do so. Some features have technological limitations. For additional feature information, limitations and restrictions, please visit www.honda.ca/disclaimers and refer to the vehicle's Owner's Manual.

2. Only compatible with certain devices and operating systems. Cellular data and/or voice charges may apply, including roaming charges and/or other amounts charged by your wireless carrier.

3. Operation requires wireless mobile phone to be paired with the vehicle. Operation is dependent upon cellular data and/or voice connection availability and GPS satellite signal reception.

ACTIVE SAFETY

Controlled Braking

To assist with safe stopping, the 4-wheel Anti-lock Braking System¹ (ABS) is designed to help you maintain control under hard braking conditions, while Electronic Brake-force Distribution (EBD) helps to optimize braking power based on weight distribution inside the vehicle. In addition, Brake Assist is engineered to help improve braking performance by applying brake pressure when a panic stop is detected.

Vehicle Stability Assist (VSA[®]) with Traction Control

Vehicle Stability Assist¹ with Traction Control is designed to sense and help correct oversteer and understeer scenarios to enhance handling and cornering stability, while Traction Control is designed to minimize wheel spin when accelerating on loose or slippery surfaces, helping to inspire greater driver confidence.

Hill Start Assist¹

When you take your foot off the brake, this feature is engineered to temporarily maintain brake pressure to help prevent your Civic from starting to roll backwards when stopped on an incline.

PASSIVE SAFETY

Advanced Compatibility Engineering™ (ACE™) body structure

The highly innovative, next generation Advanced Compatibility Engineering™ (ACE™) body structure is engineered to help disperse frontal impact energy to enhance occupant protection, while more effectively controlling it in severe collisions, to help prevent intrusion into the passenger cabin.

Six standard airbags

The Civic comes with six standard airbags. It features dual-stage, multiple-threshold front airbags as well as side curtain airbags with rollover sensor system, which are designed to deploy the side curtain airbags in the event of a rollover. Plus, it has Smartvent™ side airbags, which are designed to deploy in a manner that mitigates the risk of injury to out-of-position or smaller occupants.

HondaLink™ Assist Automatic Emergency Response System

The available HondaLink Assist Automatic Emergency Response System^{1,2,3} helps you get the help you need when you need it most. If the airbags deploy, your Display Audio System¹ is designed to automatically attempt to put you on a call with an operator who will forward your location to first responders if needed. It works with any compatible Bluetooth[®]-paired phone as long as it has reception, does not require a subscription and gives you added peace of mind while you're on the road.

Seat belt safety

The Civic helps prepare you for the unexpected with 3-point height-adjustable front seat belts with automatic tensioning system and 3-point rear seat belts.

Child safety

The Civic features childproof rear door locks as well as rear seat Lower Anchors and Tethers for Children (LATCH), which give you a simple and convenient method to install compatible child safety seats without using the vehicle's seat belt system.

Pedestrian safety

Innovative pedestrian safety features include an energy-absorbing hood and front fenders and deformable wiper pivots.



Rear wing spoiler



Door visors



Rear seat cover



Remote engine starter FOB



Door sill trim, illuminated



All-season floor mats



Cargo net



Trunk tray



Rear splash guards

Accessories.

Other Accessories Available

17" Alloy wheel
 Ambient lighting (blue)
 All-season floor mats (high wall)
 Ashtray, cup-holder style
 Auto day/night mirror
 Auto day/night mirror attachment
 Auto day/night mirror harness
 Body side molding
 Car cover
 Cargo hook
 Cargo net
 Door edge film
 Door edge guards

Door sill trim, illuminated
 Door visors
 Engine block heater
 Fog lights
 Front underbody spoiler
 Full nose mask
 Hood edge deflector
 Lower door garnish
 Moonroof visor
 Paint pen
 Rear bumper appliqué
 Rear cupholder
 Rear deck lid spoiler

Rear seat cover
 Rear splash guards
 Rear underbody spoiler
 Rear wing spoiler
 Remote engine starter attachment
 Remote engine starter base
 Remote engine starter FOB
 Side underbody spoiler
 Trunk tray
 Wheel locks
 Wireless charger
 Wireless charger attachment

Protection package

All-season floor mats (high wall)
 Rear splash guards
 Trunk tray

Remote engine starter package

Base unit
 Attachment

Aero kit package

Front underbody spoiler
 Rear underbody spoiler
 Side underbody spoiler

Accessories and packages are subject to inventory availability.



HondaJet



Motorcycles



Side By Side



ASIMO



Honda Campus



Marine



Power Equipment



ATVs



The Power of Dreams, in all their forms.

At Honda, we're committed to being a leader in innovative thinking. It's part of everything we do, from the design of our vehicles to the way we work. We have a proud tradition of turning ideas into products and initiatives that help move and improve people's lives in every conceivable way. Today, our innovation manifests itself in many forms: our revolutionary Earth Dreams™ technology, the race-inspired performance of our motorcycles and automobiles, the world's most advanced humanoid robot, ASIMO, HondaJet, the fastest, highest flying and most fuel-efficient aircraft in its class, and the first full line of fuel-efficient, low-emission, 4-stroke outboard motors. We continually strive to do things others think can't be done, because true innovation comes from daring to dream.

Beyond dreaming up new products, Honda believes we have a responsibility to do everything we can to help preserve our planet. This belief is why we make significant efforts to help ensure preservation of the environment in all of our company's activities. It's why our head office in Markham, Ontario was designed and built to be LEED® (Leadership in Energy and Environmental Design) Gold Certified. It's why our Alliston, Ontario plant is ISO 14001 certified. And it's why Honda, along with our associates and families, has helped plant more than 100,000 trees in Canada over the last 9 years.

As we move forward, we will continue to honour our responsibility and tradition of turning innovative ideas into products that help make our world a better place. That's what we do. That's The Power of Dreams.

HIGHLIGHTS

- HondaJet
- Motorcycles
- Side By Side
- ASIMO
- Honda Campus
- Marine
- Power Equipment
- ATVs



Sedan

ENGINE	DX	LX	EX	EX-T	TOURING
2.0-litre, 16-valve, Port Injection, DOHC, i-VTEC® 4-cylinder	•	•	•		
1.5-litre, 16-valve, Direct Injection, DOHC, turbocharged 4-cylinder				•	•
Horsepower @ rpm ¹	158 @ 6500	158 @ 6500	158 @ 6500	174 @ 5500	174 @ 5500
Torque (lb.-ft. @ rpm) ¹	138 @ 4200	138 @ 4200	138 @ 4200	162 @ 1800-5500	162 @ 1800-5500
Displacement (cc)	1996	1996	1996	1496	1496
Emissions rating	Tier 3 Bin 125	Tier 3 Bin 125	Tier 3 Bin 125	Tier 3 Bin 125	Tier 3 Bin 125
Bore and stroke (mm)	86 x 85.9	86 x 85.9	86 x 85.9	73 x 89.4	73 x 89.4
Compression ratio	10.8:1	10.8:1	10.8:1	10.6:1	10.6:1
Drive-by-Wire Throttle System™	•	•	•	•	•
Eco Assist™ system	•	•	•	•	•
Recommended fuel	Regular	Regular	Regular	Regular	Regular

DRIVETRAIN	DX	LX	EX	EX-T	TOURING
6-speed manual transmission (MT)	•	•			
Continuously variable transmission (CVT)		Available	•	•	•
ECON mode button	•	•	•	•	•
Front-wheel drive	•	•	•	•	•

CHASSIS	DX	LX	EX	EX-T	TOURING
16" steel wheels with full covers	•	•			
16" aluminum-alloy wheels			•		
17" aluminum-alloy wheels					•
17" aluminum-alloy wheels (aero design)				•	
Agile Handling Assist ² (AHA)	•	•	•	•	•
All-season tires	P215/55 R16 93H	P215/55 R16 93H	P215/55 R16 93H	P215/50 R17 91H	P215/50 R17 91H
Capless fueling system	•	•	•	•	•
Variable Ratio Electric Power-Assisted Rack-and-Pinion Steering (EPS)	•	•	•	•	•
Electronic Parking Brake (EPB) with automatic brake hold	•	•	•	•	•
Front and rear stabilizer bars	25.0/16.5	25.0/16.5	25.5/16.5	25.5/16.5	26.5/17.0
Independent strut front suspension	•	•	•	•	•
Independent multi-link rear suspension	•	•	•	•	•
Power-assisted, ventilated front disc/solid rear disc brakes	•	•	•	•	•
Straight Driving Assist	•	•	•	•	•
Temporary spare tire	T125/80 D16 97M	T125/80 D16 97M	T125/80 D16 97M	T125/80 D16 97M	T125/80 D16 97M

ACTIVE SAFETY	DX	LX	EX	EX-T	TOURING
4-wheel Anti-lock Braking System ² (ABS)	•	•	•	•	•
Brake Assist	•	•	•	•	•
Electronic Brake-force Distribution (EBD)	•	•	•	•	•
Collision Mitigation Braking System™ ² (CMBS®)		Honda Sensing™ model	Honda Sensing™ model	•	•
Forward Collision Warning (FCW) system ²		Honda Sensing™ model	Honda Sensing™ model	•	•
Hill Start Assist ²	•	•	•	•	•
Lane Departure Warning (LDW) system ²		Honda Sensing™ model	Honda Sensing™ model	•	•
LED daytime running lights	•	•	•	•	•
Road Departure Mitigation (RDM) system ²		Honda Sensing™ model	Honda Sensing™ model	•	•
Vehicle Stability Assist ² (VSA®) with Traction Control	•	•	•	•	•

PASSIVE SAFETY	DX	LX	EX	EX-T	TOURING
3-point seat belts with front automatic tensioning system	•	•	•	•	•
Next-Generation Advanced Compatibility Engineering™ (ACE™) body structure	•	•	•	•	•
Childproof rear door locks	•	•	•	•	•
Dual-stage, multiple-threshold front airbags (SRS)	•	•	•	•	•
Side curtain airbags with rollover sensor system	•	•	•	•	•
Smartvent™ side airbags	•	•	•	•	•
Front height-adjustable seat belt anchors	•	•	•	•	•
HondaLink™ Assist Automatic Emergency Response System ^{2,3,4}	•	•	•	•	•
Lower Anchors and Tethers for Children (LATCH)	•	•	•	•	•

DRIVER ASSIST TECHNOLOGY	DX	LX	EX	EX-T	TOURING
Adaptive Cruise Control (ACC) ² with Low-Speed Follow		Honda Sensing™ model	Honda Sensing™ model	•	•
Honda LaneWatch™ blind spot display ²				•	•
Lane Keeping Assist System (LKAS) ²		Honda Sensing™ model	Honda Sensing™ model	•	•

EXTERIOR	DX	LX	EX	EX-T	TOURING
Body-coloured bumpers	•	•	•	•	•
Body-coloured door handles	•	•	•	•	Chrome
Deck lid spoiler				•	•
Fog lights				•	•
Folding door mirrors	•	•	•	•	•
Front splash guards	•	•	•	•	•
Heated power door mirrors including expanded view driver's mirror	Black	Body-coloured	Body-coloured	Body-coloured	Body-coloured with chrome accent

Intermittent windshield wipers	•	•			
LED front turn signal indicators					•
LED headlights (High and low beam)					With auto-on/off
LED taillights	•	•	•	•	•
Mirror-integrated LED turn signal indicators					•

We're Here. At Honda, assistance and support are always available. The team of trained technicians at your Honda dealership will help keep your vehicle in terrific shape. If you need more information or assistance relating to your warranty, call us at 1-888-9-HONDA-9. For all of the latest Honda information, including product specifications, pricing, photos and more, visit honda.ca. It has everything you need to “design” your Honda and personalize it with items from a list of quality accessories.

We're Ready to Help. When you purchase a new Honda, you automatically receive Honda Plus Roadside Assistance. This service is available to you, or any authorized driver, 24 hours a day, 7 days a week, anywhere in Canada or the continental United States. Coverage is for 3 years over an unlimited distance and includes a 24-hour toll-free Honda Plus Roadside Assistance number, mechanical breakdown towing, emergency roadside service and many other helpful features. Ask your dealer for more information.

Honda Plus Extended Warranty. Experience added protection with Honda Plus coverage that is behind you for the road ahead. With available coverage options of up to 8 years/200,000 km, you can choose the one that best suits your needs. With a plan this wide-ranging, the only thing that's uncertain is where it will take you.

Honda Financial Services. Whether you buy or lease a Honda, Honda Financial Services can assist you with the process. Ask your dealer which lease or purchase plan best suits your needs.

New Honda Vehicle Warranty. The Honda warranty protection makes Power Train components a minor concern with the Honda 5-year/100,000-km No Nonsense Warranty. In addition to the Honda 5-year/100,000-km No Nonsense Warranty, you and your new Honda are protected by a Honda 3-year/60,000-km Distributor's Warranty as well as an additional series of warranties for such items as emission controls, body corrosion and more.

Genuine Honda Accessories give you the opportunity to fine-tune your new Honda just how you like it. Whether you want to turn up the style, the versatility or the exclusivity, every accessory is designed and built to adhere to the strictest Honda standards. See your dealer for full details.

Genuine Honda Replacement Parts are made to the same exacting standards as original Honda components and are guaranteed by the Genuine Honda Parts Warranty. Using Genuine Honda Parts will help to maintain the quality, reliability and performance of your vehicle.

Always use seat belts and appropriate child seats. Children 12 and under are safest when properly restrained in a rear seat. Honda reminds you to properly secure all items stored in the cargo area.

Some of the technologies described in this brochure come with limitations. See owner's manual for complete details. Specifications, features, illustrations and equipment shown in this catalogue are based on the latest available information at the time of publication. Although descriptions are believed to be correct, accuracy cannot be guaranteed. Honda Canada Inc. reserves the right to make changes at any time, without notice or obligation, in colours, specifications, accessories, materials and models. Accessories and packages are subject to inventory availability. Honda reserves the right to terminate or change any of the services and/or features at any time, for any reason. Some features require registration. Certain features may transmit to Honda and/or other service providers a vehicle's location, operating conditions or other information that may be tied to the vehicle identification number (VIN) and can be combined to track a vehicle. For Honda's data use and privacy policy, see www.honda.ca/privacy. Some vehicles are shown with optional equipment. Some vehicles shown are U.S. models. Canadian specifications may vary. For Android Auto™ data use and privacy policy, see Terms and Privacy Policy for Android Auto™ app or contact Google Inc. at www.google.com. For Apple CarPlay™ data use and privacy policy, see Terms and Privacy policy for Apple CarPlay™ or contact Apple Inc. at www.apple.com. Android Auto is a trademark of Google Inc. Apple CarPlay and Siri are trademarks of Apple Inc. Bluetooth is a registered trademark of SIG Inc. HandsFreeLink is a trademark of Johnson Controls Technology. HD Radio™ is a proprietary trademark of iBiquity Digital Corp. LEED® is a registered trademark of the U.S. Green Building Council, licensed to the Canada Green Building Council for use in Canada. Windows Media is a registered trademark of Microsoft Corporation. © 2015 Sirius XM Canada Inc. "SiriusXM", the SiriusXM logo, channel names and logos are trademarks of SiriusXM Radio Inc. and are used under licence. Honda, Civic, i-VTEC, Advanced Compatibility Engineering, ACE, Collision Mitigation Braking System, CMBS, Drive-by-Wire Throttle System, Earth Dreams, Eco Assist, HondaLink, Honda Satellite-Linked Navigation System, Honda Sensing, LaneWatch, Maintenance Minder, Smartvent, VSA, The Power of Dreams, HondaJet and ASIMO are trademarks of Honda Motor Co., Ltd.

Sedan

EXTERIOR	DX	LX	EX	EX-T	TOURING
One-touch power moonroof with tilt feature			•	•	•
Projector-beam halogen headlights	With auto-off	With auto-on/off	With auto-on/off	With auto-on/off	
Rain-sensing windshield wipers					•
Rear window defroster	•	•	•	•	•
Shark fin antenna					•
Speed-sensing, variable intermittent windshield wipers			•	•	•

COMFORT & CONVENIENCE	DX	LX	EX	EX-T	TOURING
12-volt power outlet	1	1	1	1	1
7" colour TFT centre meter display with Driver Information Interface		•	•	•	•
Acoustic windshield		•	•	•	•
Auto-dimming rearview mirror					•
Automatic climate control with air-filtration system	Without A/C	•	Dual-zone	Dual-zone	Dual-zone
Cargo area light	•	•	•	•	•
Display Audio System ² with Honda Satellite-Linked Navigation System ^{TM2,5} with bilingual Voice Recognition					•
Driver's and front passenger's vanity mirrors	•	•	Illuminated	Illuminated	Illuminated
Exterior temperature indicator	•	•	•	•	•
Front and rear door pockets	•	•	•	•	•
HandsFreeLink™-bilingual Bluetooth® wireless mobile phone interface ^{2,3}	•	•	•	•	•
Immobilizer theft-deterrent system	•	•	•	•	•
Maintenance Minder™ system	•	•	•	•	•
Map lights	•	•	•	•	•
Multi-angle rearview camera ²	•	With dynamic guidelines	With dynamic guidelines	With dynamic guidelines	With dynamic guidelines
Multi-functional centre console storage	•	•	•	•	•
One-touch turn signals	•	•	•	•	•
Passenger-side seatback pocket			•	•	•
Power windows with auto-up/down driver's and passenger's window	•	•	•	•	•
Power door locks	•	•	•	•	•
Proximity key entry system with pushbutton start			•	•	•
Rear armrest with cupholders		•	•	•	•
Rear-seat heater ducts	•	•	•	•	•
Remote engine starter			•	•	•
Remote entry system with electronic trunk release	•	•			
Security system	•	•	•	•	•
Steering wheel-mounted cruise control		•	•	•	•
Tilt and telescopic steering column	•	•	•	•	•
Walk-away door lock			•	•	•
Wireless charging					•

SEATING & TRIM	DX	LX	EX	EX-T	TOURING
60/40 split fold-down rear seatback		•	•	•	•
Driver's seat with 6-way manual adjustment	•	•	•	•	
Driver's seat with 8-way power adjustment					•
Front passenger's seat with 4-way manual adjustment	•	•	•	•	
Front passenger's seat with 4-way power adjustment					•
Floor mats	•	•	•	•	•
Fold-down rear seatback	•				
Heated front seats		•	•	•	•
Heated rear seats					•
Leather-trimmed seating surfaces					•
Leather-wrapped steering wheel				•	•

ENTERTAINMENT	DX	LX	EX	EX-T	TOURING
160-watt AM/FM audio system with MP3/Windows Media® Audio playback capability and 4 speakers	•				
180-watt AM/FM audio system with MP3/Windows Media® Audio playback capability and 8 speakers		•	•	•	
450-watt AM/FM Premium audio system with MP3/Windows Media® Audio playback capability and 10 speakers including subwoofer					•
Apple CarPlay ^{TM2,3} / Android Auto ^{TM2,3}		•	•	•	•
Bluetooth® Streaming Audio ^{2,3}	•	•	•	•	•
5-inch colour LCD display	•				
Display Audio System ² with HondaLink ^{TM2,3}		•	•	•	Including Navigation ^{2,5}
HD Radio ^{TM6}					•
Illuminated steering wheel-mounted audio controls	•	With capacitive touch controls	With capacitive touch controls	With capacitive touch controls	With capacitive touch controls
Siri Eyes Free compatibility ^{2,3}	•	•	•	•	•
SiriusXM ^{TM7}					•
SMS text message ^{2,3} / E-mail function ^{2,3}		•	•	•	•
Speed-sensitive Volume Control (SVC)	•	•	•	•	•
USB device connector ³	1	2	2	2	2
Wi-Fi tethering ³		•	•	•	•

FUEL ECONOMY* (L/100 KM)	DX	LX	EX	EX-T	TOURING
Continuously variable transmission (City/Hwy/Combined)		7.8 / 5.8 / 6.9	7.8 / 5.8 / 6.9	7.6 / 5.5 / 6.7	7.6 / 5.5 / 6.7
Manual transmission (City/Hwy/Combined)	8.8 / 5.9 / 7.5	8.8 / 5.9 / 7.5			

Sedan

DIMENSIONS	DX	LX	EX	EX-T	TOURING
Cargo volume (L)	428	428	428	428	416
Curb weight – MT/CVT (kg)	1244/NA	1253/1260 1261 (Honda Sensing™ model)	NA/1276 1277 (Honda Sensing™ model)	NA/1324	NA/1339
Fuel tank capacity (L)	46.9	46.9	46.9	46.9	46.9
Ground clearance – no-load/full-load (mm)	125/108	125/108	125/108	125/108	125/108
Headroom – front/rear (mm)	997/942	997/942	953/935	953/935	953/935
Height (mm)	1416	1416	1416	1416	1416
Hip room – front/rear (mm)	1364/1201	1364/1201	1364/1201	1364/1201	1364/1201
Legroom – front/rear (mm)	1074/950	1074/950	1074/950	1074/950	1074/950
Length (mm)	4631	4631	4631	4631	4631
Passenger volume (L)	2769	2769	2690	2690	2690
Shoulder room – front/rear (mm)	1447/1397	1447/1397	1447/1397	1447/1397	1447/1397
Track – front/rear (mm)	1547/1563	1547/1563	1547/1563	1547/1563	1547/1563
Turning radius (m) (curb-to-curb)	5.4	5.4	5.4	5.4	5.4
Wheelbase (mm)	2700	2700	2700	2700	2700
Width – including mirrors/mirrors folded (mm)	2076 / 1878	2076 / 1878	2087 / 1878	2087 / 1878	2087 / 1878

1. Horsepower and torque calculations reflect SAE net, Rev. 08/04, SAE J1349 procedures.

2. None of the features we describe are intended to replace the driver's responsibility to exercise due care while driving. Drivers should not use handheld devices or operate certain vehicle features unless it is safe and legal to do so. Some features have technological limitations. For additional feature information, limitations and restrictions, please visit www.honda.ca/disclaimers and refer to the vehicle's Owner's Manual.

3. Only compatible with certain devices and operating systems. Cellular data and/or voice charges may apply, including roaming charges and/or other amounts charged by your wireless carrier.

4. Operation requires wireless mobile phone to be paired with the vehicle. Operation is dependent upon cellular data and/or voice connection availability and GPS satellite signal reception.

5. Map database covers major metropolitan areas in Canada and the 48 contiguous U.S. states.

6. Coverage varies by market.

7. Only available in certain areas. Includes a no-charge trial of three months.

8. Estimated fuel economy based on Government of Canada's 5-cycle testing method. Your actual fuel consumption will vary based on driving habits and other factors – use for comparison only.

For more information on 5-cycle testing, visit <http://vehicles.nrcan.gc.ca>.

Trims

CIVIC DX SEDAN

- KEY FEATURES:**
- 158-hp¹, 2.0-litre, 16-valve, Port Injection, DOHC, i-VTEC[®] 4-cylinder engine
 - 12-volt power outlet
 - 16" steel wheels with full covers
 - 160-watt AM/FM audio system with MP3/Windows Media[®] Audio playback capability and 4 speakers
 - 4-wheel Anti-lock Braking System² (ABS)
 - 6-speed manual transmission (MT)
 - Bluetooth[®] Streaming Audio^{2,3}
 - Body-coloured door handles
 - Brake Assist
 - Drive-by-Wire Throttle System[™]
 - Driver's and front passenger's vanity mirrors
 - Driver's seat with 6-way manual adjustment
 - Dual-stage, multiple-threshold front airbags (SRS)
 - ECON mode button and Eco Assist[™] system
 - Electronic Brake-force Distribution (EBD)
 - Exterior temperature indicator
 - Fold-down rear seatback
 - Folding side mirrors
 - Front splash guards
 - HandsFreeLink[™]-bilingual Bluetooth[®] wireless mobile phone interface^{2,3}
 - Heated power door mirrors including expanded view driver's mirror
 - Independent multi-link rear suspension
 - Independent strut front suspension
 - Lower Anchors and Tethers for Children (LATCH)
 - Map lights
 - Multi-angle rearview camera²
 - Multi-functional centre console storage
 - Next-Generation Advanced Compatibility Engineering[™] (ACE[™]) body structure
 - Power door locks
 - Power windows with auto-up/down driver's and passenger's window
 - Power-assisted, ventilated front disc/solid rear disc brakes
 - Projector-beam halogen headlights with auto-off
 - Remote entry system with electronic trunk release
 - Security system
 - Side curtain airbags with rollover sensor system
 - Siri Eyes Free compatibility^{2,3}
 - Smartvent[™] side airbags
 - Tilt and telescopic steering column
 - USB device connector²
 - Variable Ratio Electric Power-Assisted Rack-and-Pinion Steering (EPS)
 - Vehicle Stability Assist² (VSA[®]) with Traction Control

CIVIC LX SEDAN

- ADDS TO OR REPLACES DX FEATURES:**
- 7" colour TFT centre meter display with Driver Information Interface
 - 180-watt AM/FM audio system with MP3/Windows Media[®] Audio playback capability and 8 speakers
 - 60/40 split fold-down rear seatback
 - Apple CarPlay^{™2,3} / Android Auto^{™2,3}
 - Automatic climate control with air conditioning and air-filtration system
 - Available continuously variable transmission (CVT)
 - Body-coloured door mirrors
 - Display Audio System² with HondaLink^{™2,3}
 - Heated front seats
 - HondaLink[™] Assist Automatic Emergency Response System^{2,3,4}
 - Illuminated steering wheel-mounted audio controls with capacitive touch controls
 - Multi-angle rearview camera² with dynamic guidelines
 - Projector-beam halogen headlights with auto-on/off
 - Rear armrest with cupholders
 - SMS text message / E-mail function^{2,3}
 - Steering wheel-mounted cruise control
 - USB device connector² (2)
 - Wi-Fi tethering²
 - Available Honda Sensing[™] Technologies (CVT)

CIVIC EX SEDAN

- ADDS TO OR REPLACES LX FEATURES:**
- 16" aluminum-alloy wheels
 - Continuously variable transmission (CVT)
 - Dual-zone automatic climate control with air-filtration system
 - Honda LaneWatch[™] blind spot display²
 - Illuminated driver's and front passenger's vanity mirrors
 - Passenger-side seatback pocket
 - One-touch power moonroof with tilt feature
 - Proximity key entry system with pushbutton start
 - Speed-sensing, variable intermittent windshield wipers
 - Available Honda Sensing[™] Technologies

CIVIC EX-T SEDAN

- ADDS TO OR REPLACES EX FEATURES:**
- 174-hp¹, 1.5-litre, 16-valve, Direct Injection, DOHC, turbocharged 4-cylinder engine
 - 17" aluminum-alloy wheels (aero design)
 - Deck lid spoiler
 - Fog lights
 - Leather-wrapped steering wheel
 - Honda Sensing[™] Technologies

CIVIC TOURING SEDAN

- ADDS TO OR REPLACES EX-T FEATURES:**
- 17" aluminum-alloy wheels
 - 450-watt AM/FM Premium audio system with MP3/Windows Media[®] Audio playback capability and 10 speakers including subwoofer
 - Auto-dimming rearview mirror
 - Chrome door handles
 - Front passenger's seat with 4-way power adjustment
 - Display Audio System² with Honda Satellite-Linked Navigation System^{™2,5} with bilingual Voice Recognition
 - Driver's seat with 8-way power adjustment
 - HD Radio^{™6}
 - Heated rear seats
 - Leather-trimmed seating surfaces
 - LED headlights (high and low beam) with auto-on/off
 - Mirror-integrated LED turn signal indicators
 - Rain-sensing windshield wipers
 - SiriusXM^{™7}
 - Wireless charging

HONDA SENSING[™] TECHNOLOGIES

- AVAILABLE ON LX (CVT) AND EX, STANDARD ON EX-T AND TOURING**
- Collision Mitigation Braking System^{™2} (CMBS[®])
 - Forward Collision Warning (FCW) system²
 - Lane Departure Warning (LDW) system²
 - Road Departure Mitigation (RDM) system²
 - Adaptive Cruise Control (ACC)² with Low-Speed Follow
 - Lane Keeping Assist System (LKAS)²

Exterior & Interior Colours

CIVIC SEDAN	DX	LX	EX	EX-T	TOURING
Crystal Black Pearl	Black Fabric	Black Fabric	Black Fabric	Black Fabric	Black or Ivory Leather
Modern Steel Metallic	Black Fabric	Black Fabric	Black Fabric	Black Fabric	Black Leather
Aegean Blue Metallic [†]		Black Fabric	Black Fabric*	Black Fabric	Black Leather
Burgundy Night Pearl		Black Fabric*	Black Fabric*	Black Fabric	Black Leather
Lunar Silver Metallic		Black Fabric**	Black Fabric*	Black Fabric	
White Orchid Pearl			Black Fabric	Black Fabric	Black Leather
Taffeta White	Black Fabric	Black Fabric			

1. Horsepower and torque calculations reflect SAE net, Rev. 08/04, SAE J1349 procedures.
 2. None of the features we describe are intended to replace the driver's responsibility to exercise due care while driving. Drivers should not use handheld devices or operate certain vehicle features unless it is safe and legal to do so. Some features have technological limitations. For additional feature information, limitations and restrictions, please visit www.honda.ca/disclaimers and refer to the vehicle's Owner's Manual.
 3. Only compatible with certain devices and operating systems. Cellular data and/or voice charges may apply, including roaming charges and/or other amounts charged by your wireless carrier.
 4. Operation requires wireless mobile phone to be paired with the vehicle. Operation is dependent upon cellular data and/or voice connection availability and GPS satellite signal reception.
 5. Map database covers major metropolitan areas in Canada and 48 contiguous U.S. states.
 6. Coverage varies by market.
 7. Only available in certain areas. Includes a no-charge trial of three months.

*Non Honda Sensing[™] trims.
 **LX CVT only.
 †Aegean Blue not available until early 2016.