



SANTA FE XL
2016



NEW THINKING. NEW POSSIBILITIES.

Status quo is nothing more than a starting point for our research and development. Through new thinking we continue to uncover new territories in innovation, engineering and design. A vehicle is no longer simply a means of transportation; it is an extension of you. By questioning and not simply accepting convention, we continue to push the boundaries to provide new possibilities and experiences that go beyond your expectations.

This is the [H-Factor](#).



ROOM FOR 7

With comfortable seating for seven and up to 2,265L of cargo capacity – the 2016 Santa Fe XL finds a way to meet every expectation. With its versatile capabilities, comfort and substantial design, the 2016 Santa Fe XL is a true standout when you want space, style and power.



STANDOUT DESIGN

The 2016 Santa Fe XL makes style a priority, strictly adhering to Hyundai's Fluidic Sculpture design principles for a dynamic, rugged presence. Featuring sculpted headlights, dual chrome tipped exhaust outlets, and available 19-inch alloy wheels – you get bold, beautiful and powerful.



AVAILABLE HID HEADLIGHTS
WITH STANDARD LED ACCENTS



AVAILABLE LED TURN SIGNAL INDICATORS



AVAILABLE 19-INCH ALLOY WHEELS

XL CRAFTSMANSHIP

The intelligent design allows you to transform the 2016 Santa Fe XL from the ultimate comfort zone to the ultimate cargo hauler. Reclining second row seats split-fold 40/20/40 and slide forward for flexible storage options, while third row seats split-fold 50/50 to further enhance cargo utility. This sounds even better with the available Smart Power Liftgate that makes it that much more convenient to load and unload cargo. And while the 2016 Santa Fe XL adapts to your lifestyle needs, it also enhances your travels with features like standard Bluetooth®, heated front seats, YES Essentials® stain protection for cloth seating and available memory driver's seating – just one more convenient feature you can control at your fingertips.



7-seat configuration



6-seat configuration



Up to 2,265 litres of cargo capacity.



May not be exactly as shown.



POWER AND CONTROL

The 2016 Santa Fe XL is equipped with a powerful 3.3L Gasoline Direct Injection (GDI) V6 engine, delivering 290 horsepower and 252 lb-ft of torque with a confident 5,000 lbs. towing capacity. The best part about the performance is how efficient the power is. Mated to a 6-speed automatic transmission with SHIFTRONIC® manual shift mode, with the press of a button you can switch the 2016 Santa Fe XL into Active ECO mode to modify engine and transmission control to optimize fuel efficiency.

SAFETY DRIVEN

The 2016 Santa Fe XL is primed to take on the everyday and even the odd day out. Standard Hillstart Assist Control (HAC) and Downhill Brake Control (DBC) provide added confidence during steep encounters, an available Blind Spot Detection³ (BSD) system helps provide added safety when changing lanes, and seven standard airbags¹ stand on guard in the event of a collision.



2016

SANTA FE XL FEATURES



SMART POWER LIFTGATE

Using proximity key technology, the available Smart Power Liftgate senses your presence when you stand within three feet of the trunk for three seconds. With no extra movement or motion, the trunk automatically opens to welcome your two hands worth of cargo, effortlessly.



ALL-WHEEL DRIVE (AWD)

The 2016 Santa Fe XL offers an available, advanced all-wheel drive system which features Active Cornering Control. Managing vehicle acceleration by adjusting the inside rear wheel speed during a turn, Active Cornering Control helps improve vehicle stability and helps to reduce over/under steer in adverse driving conditions.



HEATED AND VENTILATED SEATS

Adapt to the cold weather with the standard driver and front passenger heated seats. Receiving equal attention, your rear seat passengers will thank you for the luxury of the available heated rear seats. And just in case your journeys take you somewhere warm, the 2016 Santa Fe XL also offers available ventilated front seats.



PANORAMIC SUNROOF

The available panoramic glass sunroof provides exceptional openness and luxury.



REARVIEW CAMERA AND NAVIGATION SYSTEM

Equipped with an available 4.3-inch colour display touch-screen with rearview camera to help make reversing easier. Step up to the Limited model for an 8-inch touch-screen with rearview camera and navigation system (8-inch touch-screen shown).



HID HEADLIGHTS WITH LED ACCENTS

The highly detailed design of the standard projection-beam headlights with LED accents not only offer focused illumination for safer night driving, but also a touch of sophisticated style. Available Xenon HID headlights with auto-leveling function offer bright beams of light and self-leveling regardless of load or passenger weight distribution.



COMFORT AND CONTROL AT HAND

Take control in comfort and style with an available heated, leather-wrapped steering wheel. Also find close at hand your cruise control, audio system and standard Bluetooth® hands-free mobile phone interface controls.



BLIND SPOT DETECTION³ AND REAR CROSS-TRAFFIC ALERT⁴

The available Blind Spot Detection system uses radar to detect when a vehicle is in the driver's blind spot and provides both an audible and a visual alert to help keep you aware as you move down the road. When reverse gear is selected, Rear Cross-Traffic Alert helps identify and warn the driver of vehicles approaching from the side, even before they come into view of the standard rearview camera.



CAPTAIN'S CHAIRS (6-PASSENGER SEATING)

The Luxury and Limited models offer an available 6-seat configuration with second row captain's chairs. Now even the rear seat passengers can feel like they're in the captain's seat.



LED TAIL LIGHTS

Available LED tail lights not only look great during the day, but also dramatically improve the visibility of your vehicle at night.

5

5-YEAR/100,000 KM
**COMPREHENSIVE LIMITED
WARRANTY***

5-YEAR/100,000 KM
POWERTRAIN WARRANTY

5-YEAR/100,000 KM
EMISSION WARRANTY

5-YEAR/UNLIMITED KM
**ROADSIDE ASSISTANCE
PROGRAM****



You will see that a number of our vehicles have received multiple awards from the most reputable third party organizations, so you can take their word when it comes to the quality, design and safety of our vehicles. This quality is equally matched by the quality of our warranty. We stand confidently behind our products to give you the ultimate peace of mind with a 5-year/100,000 km comprehensive limited warranty, one of the best-backed warranties in Canada. We also provide a 5-year/unlimited km Roadside Assistance Program** featuring flat tire changing, lockout service and more. Just one toll-free call away, 24 hours a day.

THERE'S NO SUBSTITUTE FOR
PEACE OF MIND

COLOURS

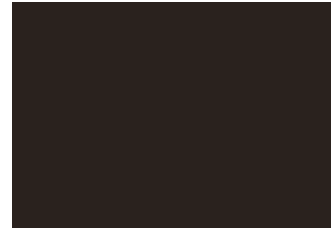
EXTERIOR



CIRCUIT SILVER



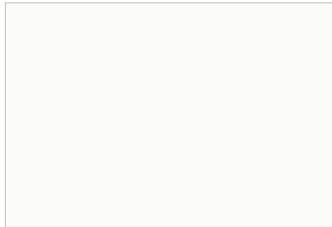
IRON FROST



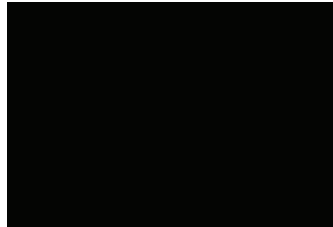
JAVA ESPRESSO



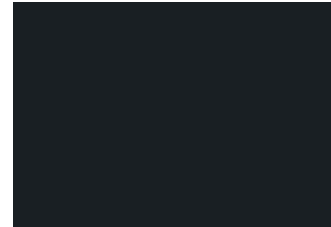
REGAL RED PEARL



MONACO WHITE

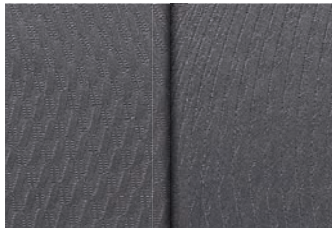


BECKETTS BLACK



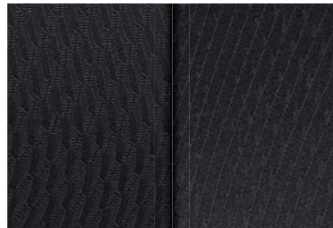
NIGHT SKY PEARL

INTERIOR



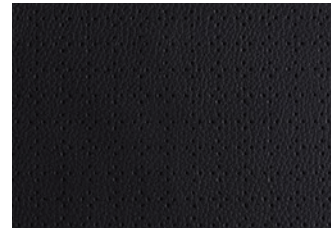
GREY CLOTH

With YES Essentials® stain protectant.
Standard on 3.3L FWD model.



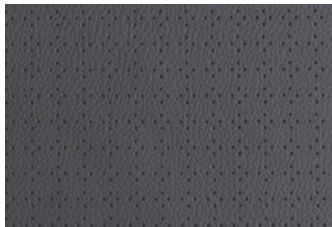
BLACK CLOTH

With YES Essentials® stain protectant.
Standard on 3.3L Premium model.



BLACK LEATHER

Standard on 3.3L Luxury and 3.3L Limited models.



GREY LEATHER

Available on 3.3L Luxury and 3.3L Limited models
(Circuit Silver and Becketts Black exterior
colours only).



BEIGE LEATHER

Available on 3.3L Luxury and 3.3L Limited models
(Monaco White, Becketts Black and Regal Red
Pearl exterior colours only).



SADDLE LEATHER

Available on 3.3L Limited 6-passenger model only
(Monaco White, Becketts Black and Iron Frost
exterior colours only).

WHEELS



**3.3L FWD, 3.3L
Premium and 3.3L
Luxury 18-inch Wheel**



**3.3L Limited 19-inch
Wheel**

Choice of interior colour depends upon model and/or exterior colour selection. Due to the print production process, the colours and textures shown throughout this brochure may not be exactly as shown. Visit hyundaicanada.com or see your dealer for details.

CROSS RAILS

This durable, quick-locking cross rail system lets you transport cargo easily, without sacrificing interior room.



PREMIUM ALL WEATHER CARGO TRAY

Protect your interior cargo area with style. This durable, custom-fit premium cargo tray helps protect from spills and messy loads while helping keep your cargo area looking new for years to come.



PLASTIC HOOD PROTECTOR

Help prevent dents and scratches caused by road and vehicle debris with an attractive plastic hood protector.



TRAILER HITCH KIT

Designed to meet your towing needs, a Hyundai hitch can accommodate a wide variety of hitch-mounted accessories. Kit includes: trailer hitch, ball mount and end cap (Chrome ball shown not included).



HITCH MOUNT BIKE CARRIER (4 BIKES)

Hold fast cradles cushion the bikes and provide maximum bike security. Anti-sway cages prevent bike-to-bike and bike-to-vehicle contact. An improved hitch swing folds arms down when not in use and tilts carrier away from vehicle for trunk, hatch or tailgate access. Increased mast height for improved ground clearance (Santa Fe Sport model shown).



SIDE VISORS

Complement your vehicle with a sleek and durable set of side visors that will help reduce glare while providing you with fresh air. Custom made for your vehicle using high quality reinforced tinted acrylic plastic, these visors will look good on your vehicle for years to come.



SIDE STEPS (OVAL TUBES)

These oval side steps were designed to complement the design nature of your Hyundai. They are as attractive as they are functional. Finished in stainless steel, these oval side steps include step pads for secure footing and will look good for years to come.



PREMIUM ALL WEATHER FLOOR LINERS

Premium all weather floor liners were designed to cover the interior carpet providing maximum protection against the elements that other mats cannot offer. Their unique and durable design features a non-slip surface for added comfort and a long lasting premium look. Remove carpet mats prior to installation.

ACCESSORIES

SANTA FE XL SPECIFICATIONS

| 3.3L FWD | | STANDARD EQUIPMENT INCLUDES: | |
|---|--|--|--|
| 3.3L, 290 hp, V6 GDI Engine with DOHC and D-CVVT | | Airbags ¹ (7): Dual front, front seat-mounted side-impact, roof mounted side-curtain with roll-over sensor and driver knee airbag | |
| 18" aluminum alloy wheels | | Heated front seats | |
| 6-speed automatic transmission with SHIFTRONIC [®] manual mode | | Deluxe cloth seats with YES Essentials [®] stain protection | |
| Active ECO System | | 7-passenger seating | |
| Four-wheel disc brakes | | Second row 40/20/40 split fold-flat and recline with height adjustable head restraints | |
| Air conditioning with manual temperature control and second row vents | | Third row 50/50 split bench with fold-forward head restraints | |
| AM/FM/SiriusXM [™] /CD/MP3 audio system with LCD screen and 6-speakers | | Heated, power adjustable side mirrors | |
| iPod [®] /USB/auxiliary connectivity | | Power windows with driver and passenger auto-up/down with pinch protection | |
| Anti-lock Braking System (ABS) with Electronic Brake-force Distribution (EBD) and Brake Assist (BA) | | Roof-rack side rails | |
| Electronic Stability Control (ESC) with Traction Control System (TCS) ² | | Remote keyless entry with alarm | |
| Downhill Brake Control (DBC) and Hillstart Assist Control (HAC) | | Steering wheel-mounted telephone and audio controls | |
| Windshield wiper de-icer | | LED positioning lamps | |
| Bluetooth [®] hands-free phone system with voice recognition | | Fog lights | |
| Front centre console with fixed armrest, storage box and dual cupholders | | Chrome door handles | |
| Sliding second row seats | | Rear spoiler | |
| Driver and front passenger illuminated vanity mirrors | | 2,268 kg (5,000 lbs.) towing capacity | |
| | | Trailer tow pre-wiring | |
| | | Dual chrome exhaust tips | |
| | | Solar glass with rear privacy glass | |
| 3.3L PREMIUM (AWD) | | INCLUDES 3.3L FWD STANDARD EQUIPMENT PLUS: | |
| All-Wheel Drive | | Rear parking assistance sensors | |
| Automatic headlights | | Third row air conditioning controls with vent | |
| Dual-zone automatic temperature control with CleanAir Ionizer | | 115-volt cargo area power outlet | |
| 12-way power adjustable driver's seat with 4-way power lumbar support and adjustable head restraint | | Smart Power Liftgate | |
| Leather-wrapped steering wheel and gearshift knob | | AM/FM/SiriusXM [™] /CD/MP3 audio system with 4.3" colour touch-screen audio display | |
| Heated second row seats | | Rearview camera | |
| Manual rear side window sunshades | | Proximity keyless entry with push-button ignition | |
| 3.3L LUXURY (AWD) | | INCLUDES 3.3L PREMIUM STANDARD EQUIPMENT PLUS: | |
| 4-way power adjustable passenger's seat | | LED side mirror turn signal repeaters | |
| Blind Spot Detection (BSD) ³ system with Lane Change Assist (LCA) and Rear Cross-Traffic Alert (RCTA) ⁴ | | Panoramic sunroof | |
| Electrochromic auto-dimming inside rearview mirror with HomeLink [®] and compass | | Driver's Integrated Memory System (IMS) | |
| Leather seating surfaces | | Optional: available second row Captain's chairs (6-passenger seating) | |
| 3.3L LIMITED (AWD) | | INCLUDES 3.3L LUXURY STANDARD EQUIPMENT PLUS: | |
| 19" aluminum alloy wheels | | Deluxe door scuff plates | |
| Auto-leveling High Intensity Discharge (HID) headlights | | Supervision cluster with TFT LCD screen | |
| LED tail lights | | Ventilated front seats | |
| Infinity [®] AM/FM/SiriusXM [™] /CD/MP3 audio system with 10 speakers | | Optional: available second row Captain's chairs (6-passenger seating) | |
| 8.0" touch-screen navigation system with rearview camera | | | |

3.3 L

| ENGINE | |
|--|---|
| Type | 3.3L GDI Lambda II 6-cylinder engine |
| Cam design | DOHC |
| Block/Head composition | Aluminum/Aluminum |
| Horsepower @ RPM | 290 @ 6,400 RPM |
| Torque (lb-ft) @ RPM | 252 lb-ft @ 5,200 RPM |
| Bore and stroke (mm) | 92.0 mm x 83.8 mm |
| Compression ratio (:1) | 11.5 |
| Induction system | Variable |
| Fuel system | Gasoline Direct Injection |
| Engine mounts | Transverse |
| Exhaust | Two separate steel pipes |
| Anti-knock control | S |
| Recommended fuel | Regular unleaded |
| ELECTRICAL | |
| Ignition system | Electronic/Distributorless |
| Starter | 1.4 kW |
| Alternator | 13.5 V / 150 A |
| Battery | 80 AH |
| BRAKING | |
| Type | Anti-lock Braking System (ABS) with Electronic Brake-force Distribution (EBD) |
| Front | 320 mm / Ventilated disc / Single piston |
| Rear | 302 mm / Solid disc / Single piston |
| STEERING | |
| Type | Rack-mounted Motor Driven Power Steering (R-MDPS) |
| Overall ratio (:1) | 15.03 |
| Turns (lock to lock) | 2.95 |
| Turning diameter (m) | 11.24 |
| SUSPENSION | |
| Front / Rear | MacPherson struts |
| Front stabilizer bar (mm) | 26.0 |
| Rear stabilizer bar (mm) | 21.0 / 19.0 (FWD/AWD) |
| WEIGHTS (KG) | |
| Curb FWD/AWD | 1,790 / 1,968 |
| GVMR FWD/AWD | 2,500 / 2,550 |
| Maximum towing capacity, with trailer brake | 2,268 |
| Maximum towing capacity, without trailer brake | 750 |
| Roof rack load | 100 |
| VOLUME (L) | |
| Interior volume | 4,531 |
| Cargo – behind front seats | 2,265 |
| Cargo – behind second row seats | 1,159 |
| Cargo – behind third row seats | 383 |
| FUEL ECONOMY ⁵ (L/100KM) – 5 CYCLE TESTING METHOD | |
| City (FWD/AWD/AWD Limited) | 12.9 / 13.0 / 13.9 |
| Highway (FWD/AWD/AWD Limited) | 9.4 / 9.7 / 10.8 |
| Combined (FWD/AWD/AWD Limited) | 11.3 / 11.5 / 12.5 |

For more detailed specifications and information, please visit hyundaicanada.com, or visit your dealer today.

• = Standard - = Not Available ◦ = Optional

| | | 3.3L FWD | 3.3L Premium | 3.3L Luxury | 3.3L Limited |
|---------------------|--|----------|--------------|-------------|--------------|
| PERFORMANCE | | | | | |
| Engine | 3.3L GDI Lambda II 6-cylinder engine | • | • | • | • |
| Transmission | SHIFTRONIC® 6-speed electronic automatic with OD lock-up torque converter | • | • | • | • |
| Drive configuration | Front Wheel Drive (FWD) | • | - | - | - |
| | All-Wheel Drive (AWD) | - | • | • | • |
| EXTERIOR | | | | | |
| Wheels and tires | 18" x 7.5J aluminum alloy wheels with P235/60R18 all-season tires | • | • | • | - |
| | 19" x 7.5J aluminum alloy wheels with P235/55R19 all-season tires | - | - | - | • |
| | Temporary spare tire | • | • | • | • |
| Exterior lighting | Projector beam headlights | • | • | • | • |
| | Automatic headlights | - | • | • | • |
| | Fog lights | • | • | • | • |
| | LED positioning lamps | • | • | • | • |
| | High Intensity Discharge (HID) headlights with auto-leveling | - | - | - | • |
| | LED tail lights | - | - | - | • |
| Outside mirrors | Blind Spot Detection (BSD) indicators | - | - | • | • |
| | Heated with timer, power activation, body colour and manual folding | • | • | • | • |
| | LED integrated side mirror turn signal repeaters | - | - | • | • |
| | Driver's Integrated Memory System (IMS) | - | - | • | • |
| Moldings and trim | Dark chrome front grille | • | • | • | • |
| | Chrome door handles | • | • | • | • |
| | Deluxe door scuff plates | - | - | - | • |
| Glass | Solar control tinted glass | • | • | • | • |
| | Rear window privacy glass | • | • | • | • |
| Wipers | Speed-sensitive front windshield wipers with 2 speeds and variable intermittent settings | • | • | • | • |
| | Windshield wiper de-icer | • | • | • | • |
| | Rear windshield, 2-speed with washer | • | • | • | • |
| Other | Rear spoiler | • | • | • | • |
| | Roof rack side rails | • | • | • | • |
| | Panoramic sunroof | - | - | • | • |
| | Trailer tow wiring | • | • | • | • |
| INTERIOR | | | | | |
| Seating | 7-passenger capacity | • | • | • | • |
| | 6-passenger capacity with second row captain's chairs | - | - | ◦ | ◦ |
| | Cloth seating surfaces | • | • | - | - |
| | Leather seating surfaces | - | - | • | • |
| | Multi-adjustable bucket seats | • | • | • | • |
| | Driver seat power lumbar support 2-way | • | - | - | - |
| | Driver seat power lumbar support 4-way | - | • | • | • |
| | 12-way power-adjustable driver's seat | - | • | • | • |
| | 4-way power-adjustable passenger seat | - | - | • | • |
| | Driver's Integrated Memory System (IMS) for seat and mirror positions | - | - | • | • |
| | Heated front seats | • | • | • | • |
| | Ventilated front seats | - | - | - | • |
| | 40/20/40 split-folding 2 nd row bench seat | • | • | • | • |
| | Rear adjustable head restraint | • | • | • | • |
| | Rear heated seats | - | • | • | • |
| | Rear sliding seats | • | • | • | • |
| | Remote release cargo area | • | • | • | • |
| | 50/50 split-folding 3 rd row bench seat | • | • | • | • |

| | | 3.3L FWD | 3.3L Premium | 3.3L Luxury | 3.3L Limited |
|---------------------------------------|--|---|--------------|--------------------------|--------------|
| INTERIOR (continued) | | | | | |
| Multimedia | AM/FM/SiriusXM™/CD/MP3 audio system with 6 speakers | • | - | - | - |
| | AM/FM/SiriusXM™/CD/MP3 audio system with 4.3" LCD touch-screen display | - | • | • | - |
| | 8.0" high-resolution touch-screen navigation system with Infinity® audio system and 10 speakers | - | - | - | • |
| | Rear parking assistance sensors | - | • | • | • |
| | Rearview camera | - | • | • | • |
| | iPod®/USB and MP3 auxiliary input jacks (centre console mounted) | • | • | • | • |
| Interior trim | Sun visors, driver and passenger vanity mirror and visor extension | • | • | • | • |
| | Shift knob, black, leather-wrapped | - | • | • | • |
| HVAC | Manual air conditioning with auto-defogging system | • | - | - | - |
| | Dual-zone automatic climate control with CleanAir Ionizer | - | • | • | • |
| | Second row HVAC vents | • | • | • | • |
| | Third row HVAC vents | - | • | • | • |
| Steering wheel | Leather-wrapped steering wheel | - | • | • | • |
| | Heated steering wheel | - | • | • | • |
| | Audio (volume, mode, seek) and Bluetooth® hands-free telephone controls | • | • | • | • |
| | Manual tilt-and-telescopic steering column adjustment | • | • | • | • |
| Instrumentation | Supervision cluster with TFT LCD screen | - | - | - | • |
| Convenience | Cruise control | • | • | • | • |
| | Power windows with driver and passenger auto up/down and pinch protection | • | • | • | • |
| | Smart Power Liftgate | - | • | • | • |
| | Electrochromic auto-dimming rearview mirror with integrated HomeLink® transceiver | - | - | • | • |
| | 12-volt outlet cargo area, hinged cap | • | • | • | • |
| | 110-volt power outlet | - | • | • | • |
| | Cargo area under floor storage | • | • | • | • |
| | Rear side window sunshades | - | • | • | • |
| | Proximity keyless entry with push-button ignition | - | • | • | • |
| SAFETY | | | | | |
| Safety | Airbags ¹ (7) – driver's knee (1), front impact (2), front seat-mounted side impact (2), front/rear side curtains (2) | • | • | • | • |
| | LATCH Lower Anchors and Upper Tether Anchors (second row) | • | • | • | • |
| | Electronic Stability Control (ESC) with Traction Control System (TCS) ² | • | • | • | • |
| | Anti-lock Braking System (ABS) with Brake Assist (BA) and Electronic Brake-force Distribution (EBD) | • | • | • | • |
| | Energy-absorbing steering column | • | • | • | • |
| | Blind Spot Detection (BSD) ³ system with Lane Change Assist (LCA) and Rear Cross-Traffic Alert (RCTA) ⁴ | - | - | • | • |
| | Shift interlock system | • | • | • | • |
| Security | Tamper-proof door lock key cylinder | • | • | • | • |
| | Steering wheel locks when key is removed | • | • | • | • |
| | Alarm system integrated with remote keyless entry | • | • | • | • |
| EXTERIOR / INTERIOR DIMENSIONS | | | | | |
| Wheelbase | 2,800 mm | Head room 1 st row / 2 nd row / 3 rd row | | 1,006 / 1,002 / 908 mm | |
| Overall length | 4,905 mm | (with sunroof) | | (971 / 974 / 908) mm | |
| Overall width (exclude mirrors) | 1,885 mm | Leg room 1 st row / 2 nd row / 3 rd row | | 1,120 / 1,050 / 800 mm | |
| Overall height (with roof rack) | 1,700 mm | Hip room 1 st row / 2 nd row / 3 rd row | | 1,439 / 1,406 / 1,120 mm | |
| Ground clearance | 185 mm | Shoulder room 1 st row / 2 nd row / 3 rd row | | 1,508 / 1,488 / 1,369 mm | |
| Coefficient of drag (cd) | 0.34 | | | | |

hyundaicanada.com/santa-fe-xl



^{TM/®}The Hyundai name, logos, product names, feature names, images and slogans are trademarks owned by Hyundai Auto Canada Corp. Specifications, features, illustrations, accessories, materials and equipment and all other information shown in this brochure are based on the latest information available at the time of publication. Although descriptions are believed to be correct, accuracy cannot be guaranteed. Hyundai Auto Canada Corp. reserves the right to make any changes or modifications at any time, without notice or obligation, including, without limitation, in colour, specifications, features, accessories, materials, equipment and models. Some vehicles are shown with optional equipment. All Hyundai warranties have no deductible. [†]Hyundai's Comprehensive Limited Warranty coverage covers most vehicle components against defects in workmanship under normal use and maintenance conditions. ^{††}Hyundai's 24-Hour Roadside Assistance Program is a limited service and does not cover certain costs or expenses. Roadside Assistance is not a warranty. [^]Fuel economy figures are based on manufacturer's testing and are used for comparison purposes only. Actual fuel efficiency may vary based on driving conditions and the addition of certain vehicle accessories. ^{†††}The Supplemental Restraint (Airbag) System (SRS) is designed to work with the 3-point seatbelt system. The SRS deploys in certain frontal and/or side-impact conditions where significant injury is likely. The SRS is not a substitute for seatbelts, which must still be worn at all times. Children under the age of 13 should be securely restrained in the rear seat. NEVER place a child-seat in the front seat of a Hyundai vehicle. ^²Electronic Stability Control (ESC) and Traction Control System (TCS) are meant to enhance conscientious driving habits and are not a substitute for safe driving practices. ESC cannot control your vehicle's stability under all driving situations. No system, no matter how advanced, can overcome physics or correct poor driving. Speed, road conditions and driver steering input will affect whether ESC can help prevent loss of control. See Owner's Manual for details. ^³Never rely completely on Blind Spot Detection (BSD) and be sure to use proper lane changing procedures. BSD will not detect every object or vehicle and will not prevent accidents. Always look over your shoulder and use your mirrors to confirm clearance. See Owner's Manual for further details and limitations. ^⁴Never rely exclusively on the Rear Cross-Traffic Alert. Always look over your shoulder and use your mirrors to confirm rear clearance. There are limitations to the function, detection, range and clarity of the system. The system may not detect every vehicle. This system does not detect stationary objects. Vehicle must be in reverse and has to be traveling at 10 km/hr or less. See Owner's Manual for further details and limitations. The SiriusXMTM name is a trademark of SiriusXM Satellite Radio Inc., Bluetooth[®] word mark and logos are registered trademarks owned by Bluetooth SIG, Inc., iPod[®] is a registered trademark of Apple Inc., HomeLink[®] is a registered trademark of Johnson Controls Inc. All other trademarks and trade names are those of their respective owners.

