

**Jeep**<sup>®</sup>

# CHEROKEE

2016



“2015 FOUR WHEELER OF THE YEAR”

Four Wheeler magazine†

# CHEROKEE

When the freedom to explore arrives alongside exceptional value, the world opens up to offer endless opportunities. This is what you can expect with Cherokee. Its authentic Jeep® brand four-wheel drive delivers class-leading capability<sup>1\*</sup> that gives you the confidence to take on all-weather, on- and off-road challenges alike. It's been hailed as one of *Ward's* 10 Best Interiors<sup>†</sup> – and today's Cherokee continues to impress. It offers a cabin that invites you to choose from vibrant interior colour palettes with premium soft-touch surfaces and a powertrain that delivers outstanding fuel economy. Cherokee's exceptionally smooth ride is thanks to its class-exclusive<sup>2</sup> 9-speed automatic transmission that can be paired with the 2.4L Tigershark™ MultiAir® I-4 or the 3.2L Pentastar™ Variable Valve Timing (VVT) V6 engine. Experience adventure and discover new territories with the unique and authentically crafted Jeep Cherokee, a major player in Canada's best-selling SUV brand.<sup>3</sup>



Limited shown in Deep Cherry Red Crystal Pearl. †Awarded in 2015.

<sup>1</sup>Awarded in 2014. <sup>2</sup>A note about this brochure: all disclaimers and disclosures can be found on page 21.

# THE FREE SPIRIT OF CHEROKEE TAKES YOU THERE

AS EFFICIENT AS 7.7 L/100 KM HWY\*

## BEST-IN-CLASS TOWING<sup>4</sup>

ENGINE	KG (LB)
2.4L Tigershark™ MultiAir® I-4	907 (2,000)
3.2L Pentastar™ VVT V6	907 (2,000)
3.2L Pentastar VVT V6 with Trailer Tow Group	2041 (4,500)



### CLASS-EXCLUSIVE<sup>2</sup> 9-SPEED AUTOMATIC TRANSMISSION.

It's all about driving comfort, refinement and efficiency. Shift modes are determined by intelligent software that monitors engine torque as well as kickdown, acceleration and road grade changes.

### 2.4L TIGERSHARK™ MULTIAIR® I-4 ENGINE.

This powerhouse delivers impressive fuel economy as efficient as 7.7 L/100 km highway\* and arrives as standard issue. Acclaimed for its unique and proficient valve-lift system, the 2.4L Tigershark incorporates a column of oil that helps deliver precise control of intake valve events. From its fully isolated aluminum head cover with an integrated oil separation system to its high-pressure, die-cast aluminum block, the Tigershark engine was engineered to deliver a quiet and refined ride. Plus, for those with dreams of heading for aggressive off-road destinations, it takes its 184 hp and 171 lb-ft of torque and crushes it down to a boulder-pounding crawl ratio of 56:1 when paired with the available Jeep® Active Drive Lock 4WD system on the Trail Rated® Cherokee Trailhawk®.

### 3.2L PENTASTAR VARIABLE VALVE TIMING (VVT) V6 ENGINE WITH STOP/START TECHNOLOGY.

A quiet, smooth performance is the hallmark of the 3.2L Pentastar engine, with its integrated exhaust manifold, high-compression-ratio pistons and variable-displacement oil pump. This workhorse was designed for those who require efficiency combined with extra muscle. Demanding drivers will appreciate its 271 hp, 239 lb-ft of torque and fuel efficiency as impressive as 8.1 L/100 km highway.\* Economies are further enhanced with engine Stop/Start technology that automatically shuts off the engine as the vehicle comes to a stop, then seamlessly restarts it when the brake pedal is released.

### BEST-IN-CLASS TOWING<sup>4</sup>

Best-in-class towing<sup>4</sup> means you can take all your favourite toys along when your Jeep® Cherokee is equipped with the 3.2L Pentastar VVT V6 engine and the available Trailer Tow Group.

# TRAIL RATED® TRAILHAWK®

“2015 FOUR WHEELER OF THE YEAR” – *Four Wheeler magazine*<sup>†</sup>

The 4x4 capability of Trailhawk rises above its competitors, thanks to the Jeep® Active Drive Lock 4WD system with a locking rear differential and two-speed power transfer unit (PTU). Cherokee's unique red Trail Rated Trailhawk badge also announces the inclusion of protective skid plates and signature Red tow hooks – two in the front and one in the rear.

Trailhawk arrives equipped with Selec-Terrain®, the Jeep brand's renowned traction management system, with five customized traction modes: Auto, Snow, Sport, Sand/Mud, and Trailhawk's exclusive Rock, for optimal command of the road at all times. You'll also have help maintaining steady slow speeds on uphill, level and downhill surfaces with Trailhawk's standard Selec-Speed™ Control. A driveline neutral switch for towing is also standard.



APPROACH ANGLE*	29.9°
BRAKEOVER ANGLE	22.9°
DEPARTURE ANGLE	32.2°
WATER FORDING DEPTH <sup>5</sup>	508 mm (20 in.) @ 8 km/h
GROUND CLEARANCE	220 mm (8.7 in.)

\*Removable front lower fascia detached.



## CLASS-LEADING<sup>1</sup> CAPABILITY WITH YOUR CHOICE OF THREE 4x4 SYSTEMS

**JEEP® ACTIVE DRIVE I:** A fully automatic, single-speed power transfer unit (PTU) delivers seamless operation in and out of 4WD at any speed. Equipped with a rear-axle disconnect, you can go from four-wheel drive to two-wheel drive, and back again, seamlessly without driver input. This results in reduced energy loss when 4WD capability isn't needed – improving fuel efficiency. It all comes together to deliver a consistent boost in all-weather capability, resulting in the kind of on- and off-road confidence the Jeep brand is known for.

**JEEP ACTIVE DRIVE II:** A two-speed PTU offers torque management and 4-Low mode. This locks the front and rear driveshafts to deliver additional power at low speeds or for towing your toys. A driveline neutral switch enables you to hitch Cherokee to your RV and take it along for the ride. Additionally, off-road capability is enhanced with a 2.5-cm (one-inch) increase in ride height and an incredible crawl ratio of 56:1 when paired with the 2.4L Tigershark™ MultiAir® I-4 engine and a ratio of 48:1 when paired with the available 3.2L Pentastar™ V6 engine. For those adventurers needing to tow, climb steep hills or travel off road, choose Jeep Active Drive II.

**TRAIL RATED® JEEP ACTIVE DRIVE LOCK:** Includes everything in Jeep Active Drive II, plus a locking rear differential that allows the wheels with the most traction to get 100% of the system's torque. For those who face severe weather or off-road conditions, Jeep Active Drive Lock will help Cherokee grab onto the ground and keep going, powered with even more capability and strength. Standard on all Jeep Cherokee Trailhawk® models.



**BADGE OF HONOUR** Every Cherokee Trailhawk proudly wears a Trail Rated badge indicating it has been tested to perform masterfully in five categories: Traction, Ground Clearance, Manoeuvrability, Articulation and Water Fording.<sup>5</sup>

<sup>6</sup> Trailhawk shown in Billet Metallic. <sup>†</sup>Awarded in 2015.



## ARRIVES WITH ACCOLADES

The award-winning Cherokee offers more than a new way of looking at the world – it can take you to a new world altogether. Cherokee arrives with an award-winning interior that offers plenty of room to move. Opt for the CommandView® Dual-Pane Panoramic Sunroof and passengers in both rows will get more from every adventure, everywhere you go. Here, thoughtful design lives alongside versatile convenience and absolute beauty. Choose from a stunning array of colour palettes, offered in sumptuous Nappa leather-faced or premium cloth. Soft-touch surfaces are always within reach, adding even more to Cherokee's upscale appeal. Options abound, including heated and ventilated front seating for added warmth and cooling, and a heated steering wheel for welcome relief in the cold of winter.



One of Ward's 10 Best Interiors for 2014.

8 Limited shown with Nappa Leather-faced seats and perforated inserts in Indigo Blue/Jeep® Brown with Pearl accent stitching.



Fore and aft adjustability of rear bench seat



In-dash storage cubby

## ADVENTUROUSLY CIVILIZED

### FUNCTIONALLY FUN.

It's the little and not-so-little surprises that add to the fun factor of Cherokee's functional interior landscape. Let's talk about storage spaces – there are up to 18 cubbies, pockets and bins throughout, giving you plenty of spots to store phones, computers, tablets, maps, gaming devices – you get the idea. Flip up the floor of the rear cargo area and you'll find three levels (depending on vehicle configuration) of rear cargo under-floor storage systems, each with an integrated storage tray to store your treasures. Look up above the rearview mirror and there's a handy spot to keep your sunglasses. Opt for the fold-flat front-passenger seat for another secret spot that's revealed when you simply flip up the seat cushion.

### CONFIGURE TO SUIT YOUR SITUATION.

You have plenty of options when it comes to carrying a combination of people and cargo. The 60/40 split-folding reclining rear seats can travel up to 152 mm (6 in.) fore or aft for adjustable legroom flexibility. When the entire rear bench is folded, you have a nearly flat surface and approximately 1554 litres (54.9 cu ft) of room. Cherokee can easily be configured to your liking, allowing you to haul luggage, boxes, golf clubs, ski equipment and so much more.

### UTILITARIAN OPTIONS.

The exclusive Jeep® Cargo Management System adds handy hooks and a removable grocery bag. Many innovative and thoughtful add-on storage solutions, including a first aid kit, cargo bins, a foldable cooler and more are available through Mopar®.

### CLASS-EXCLUSIVE<sup>2</sup> WIRELESS CHARGING PAD.

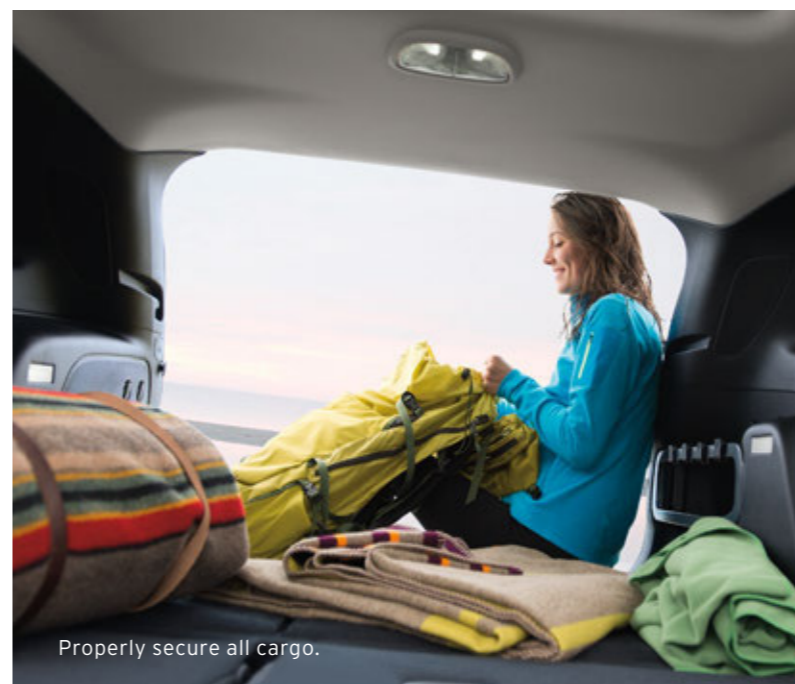
This convenient available feature is concealed within the centre console. Nearby, an integrated phone docking station and USB, SD, auxiliary input and power port outlets give Cherokee the tech-savvy leading edge.



In-seat storage



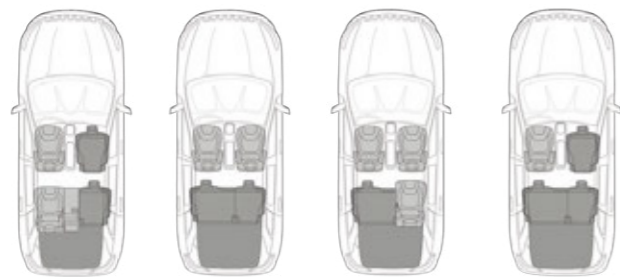
Jeep® Cargo Management System



Properly secure all cargo.



Jeep Cargo Management System





## 7-Inch Customizable IN-CLUSTER DISPLAY CENTRE

The fingertip controls for this available feature are on your steering wheel and can instantly scroll you through a rich selection of vehicle data, including vehicle performance info, alerts, and navigation<sup>7</sup> (when properly equipped). This vast array of information is displayed on the 7-inch customizable in-cluster display centre that's within clear view. Standard on Trailhawk<sup>®</sup> and Limited models.



## MASTERFULLY SIMPLE

Cherokee offers the award-winning and intuitive Uconnect<sup>®</sup> multimedia centre, which keeps you connected, informed and entertained. You can also use your voice to control nearly every feature with the latest available voice-recognition technology<sup>8</sup>. Full-colour 5-inch or 8.4-inch touchscreen multimedia centres available.

### VOICE COMMAND<sup>8</sup>

Use your voice to select AM/FM radio stations and SiriusXM satellite radio<sup>9</sup> channels, make and receive calls, choose navigation<sup>7</sup> destinations or set cabin temps.

### NAVIGATION<sup>7</sup>

Uconnect employs GPS navigation for audible turn-by-turn directions, and detailed 3D maps help to ensure you arrive on time. The Nav is integrated into your in-cluster display centre and on the multimedia centre touchscreen display so you can see directions front and centre.

### ENTERTAINMENT.

With SiriusXM satellite radio<sup>9</sup> (one-year trial subscription included), you get every channel available on your satellite radio. With Instant Replay, you have the ability to pause, replay, rewind and fast-forward live audio channels, and access entertainment via Bluetooth<sup>®</sup> streaming audio. SiriusXM also features Favourite Artist/Song and Game alerts which give you the ability to save the current artist/song/team into memory and allow the radio to alert you when that artist/song/team is playing on other channels. Available.

### WIRELESS CHARGING PAD.

The available wireless charging pad on the front console keeps important devices in play.

### PHONE/TEXT<sup>10</sup>

Plans can change en route. Safely spread the word with a hands-free<sup>8</sup> phone call or use your voice to reply to a text message<sup>10</sup> using one of 18 preformatted text replies. You can pair up to seven Bluetooth-enabled phones.

# BE IN CONTROL WITH ADVANCED TECH

## OVER 70 STANDARD AND AVAILABLE SAFETY AND SECURITY FEATURES

**BLIND-SPOT MONITORING!** This sentry system constantly monitors the space between you and other drivers. When a side blind spot is encroached, you're notified via an audible chime or an illuminated icon on the appropriate sideview mirror.

**REAR CROSS-PATH DETECTION!** This active safety feature engages when you put Cherokee in Reverse. It uses two bumper-mounted sensors that can detect approaching vehicles and notify you in order to help prevent a potential collision. If a car approaches from either side, the driver hears a chime and sees an illuminated icon in the side mirror.

**LANE DEPARTURE WARNING WITH LANE KEEP ASSIST!** The vehicle lane position is monitored by cameras. Should the driver drift too far outside of lane boundaries or if the driver's hands are off the wheel, the system provides a visual warning as well as a slight steering wheel jerk, encouraging the driver to keep within lane boundaries.

**ADAPTIVE CRUISE CONTROL WITH STOP AND GO!** Take the guesswork out of keeping a safe distance from the vehicle ahead while cruising on the highway. This system automatically adjusts cruising speed to maintain a preset distance between you and the vehicle in front of you, and can bring Cherokee to a complete stop without driver intervention in certain circumstances.

**FORWARD COLLISION WARNING WITH ACTIVE BRAKING!** Radar sensors detect when Cherokee may be approaching another vehicle too rapidly and send an audible and visual alert to the driver along with a brake jerk if the driver does not react in time. The warning and limited braking are intended to provide the driver enough time to react and avoid a potential collision.

**PARALLEL AND PERPENDICULAR PARK ASSIST!** This active guidance system uses ultrasonic sensors on the bumper to easily guide you into a parking space, hands-free. The driver controls the gear position, brake and accelerator. Includes Park-Sense Front and Rear Park Assist sensors.



Configure the warning zone points in the available Lane Departure Warning with Lane Keep Assist<sup>11</sup> to suit your driving style through personalized settings in your vehicle's radio.



Slip into parking spaces with ease. Available Parallel and Perpendicular Park Assist<sup>11</sup> takes control of steering angles, while the driver remains safely in control of the brake and accelerator.





# PEACE OF MIND TRAVELS WITH YOU

## CHEROKEE IS DESIGNED TO KEEP YOU SAFE, FIRST AND FOREMOST

Cherokee keeps consistent watch over you and yours. With the latest standard and available safety and security features on board, you can count on this hero's brave stewardship over every road.

**PARKVIEW® REAR BACK-UP CAMERA!**<sup>11</sup> Now you can park and back out with confidence. The system displays a rearview video image with dynamic distance grid lines when in Reverse. During parking and other similar manoeuvres, this system helps bring previously hidden rear objects to your attention on-screen. Available.

**ELECTRONIC STABILITY CONTROL (ESC)**<sup>6</sup> A vehicle-wide network of safety sensors helps maintain vehicle control, providing instant aid should they detect you're veering off your intended path. ESC coordinates Electronic Roll Mitigation (ERM), Antilock Brake System (ABS), Brake Assist, All-Speed Traction Control and Trailer Sway Control (TSC), sending them into action when needed. Standard.

**ELECTRONIC ROLL MITIGATION (ERM).** As an extension of ESC,<sup>6</sup> ERM employs ESC sensors to anticipate potential risk situations. If things get rough, ERM takes immediate action to help your vehicle maintain stability and remain under control. Standard.

**TRAILER SWAY CONTROL (TSC).** Crosswinds or traffic hold no sway over you and your payload. As part of ESC, TSC helps keep you and the toys you are towing safely on course. Standard.

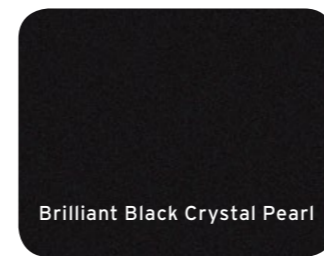
**RAIN BRAKE SUPPORT.** Wet pavement can prove challenging to safe travel. This system automatically helps maintain optimal braking by keeping brake rotors dry in rainy conditions. Standard.

**KEYLESS ENTER 'N GO!**<sup>TM</sup> This feature allows you to keep your key fob in your pocket or purse, leaving your hands free to quickly open the door, take a seat, push a button and head out for fun. Available.

**10 STANDARD AIR BAGS!**<sup>12</sup> Your sense of security is fully met with Cherokee's all-around air bag system. Full-length side-curtain, driver and front-passenger inflatable knee blocker, front-seat-mounted side thorax/pelvic, rear-seat-mounted side pelvic and advanced multistage front air bags all work together to help provide protection. Standard.



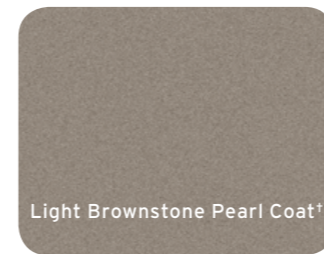
# COLOUR, FABRIC AND WHEEL OPTIONS



Brilliant Black Crystal Pearl



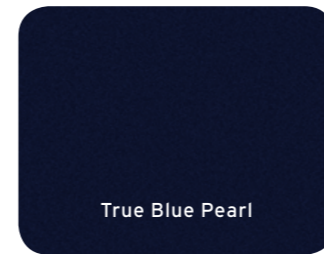
Granite Crystal Metallic<sup>+</sup>



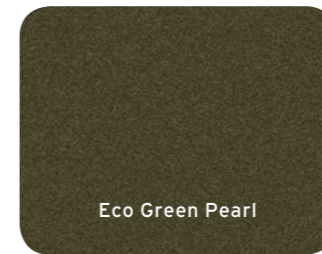
Light Brownstone Pearl Coat<sup>\*</sup>



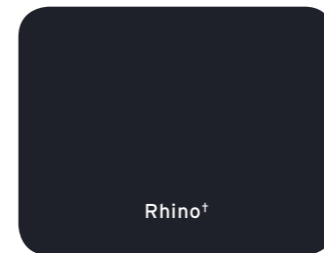
Billet Metallic



True Blue Pearl



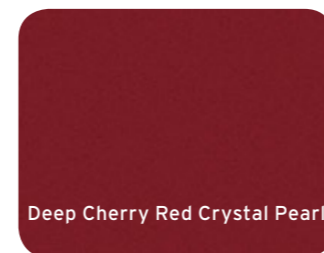
Eco Green Pearl



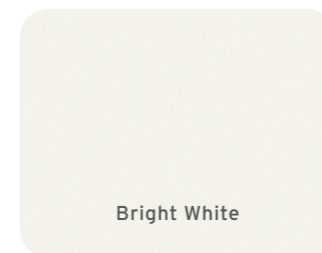
Rhino<sup>+</sup>



Mango Tango Pearl!<sup>!</sup>



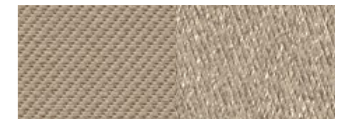
Deep Cherry Red Crystal Pearl



Bright White



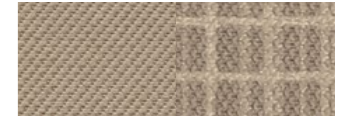
Cloth – Black with Light Frost accent stitching  
Standard on Sport



Cloth – Light Frost  
Standard on Sport



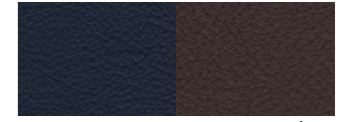
Premium cloth – Black with Light Frost accent stitching  
Standard on North



Premium cloth – Light Frost  
Standard on North



Nappa leather-faced – Black with Light Frost accent stitching  
Standard on Limited



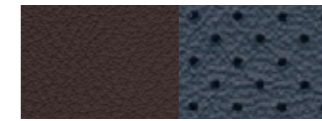
Nappa leather-faced – Indigo Blue/Jeep<sup>®</sup> Brown with Pearl accent stitching  
Standard on Limited



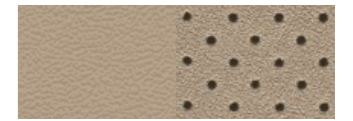
Nappa leather-faced – Light Frost  
Standard on Limited



Nappa leather-faced with perforated suede inserts – Black with Light Frost accent stitching  
Available on Limited with Luxury Group



Nappa leather-faced with perforated suede inserts – Indigo Blue/Jeep<sup>®</sup> Brown with Pearl accent stitching  
Available on Limited with Luxury Group



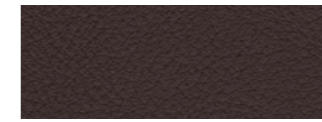
Nappa leather-faced with perforated suede inserts – Light Frost  
Available on Limited with Luxury Group



Cloth/Nappa leather – Black with Red accent stitching  
Standard on Trailhawk<sup>®</sup>



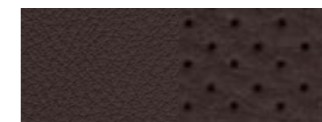
Nappa leather – Black with Red accent stitching  
Available on Trailhawk



Nappa leather – Jeep Brown with Red accent stitching  
Available on Trailhawk



Nappa leather-faced with perforated inserts – Black with Red accent stitching  
Available on Trailhawk with Ventilated/Memory Seat Group



Nappa leather-faced with perforated inserts – Jeep Brown with Red accent stitching  
Available on Trailhawk with Ventilated/Memory Seat Group



17-inch steel  
Standard on Sport



17-inch aluminum  
Standard on North



18-inch polished aluminum  
Standard on Limited



17-inch Off-Road aluminum  
Standard on Trailhawk



17-inch Off-Road aluminum painted Black  
Available on Trailhawk

\*Late/limited availability.

## TRAILHAWK® 4x4

### POWERTRAIN

- 2.4L Tigershark™ MultiAir® I-4
- 3.2L Pentastar™ Variable Valve Timing (VVT) V6 engine with Stop/Start technology
- 9-speed automatic

### SELECT TRAILHAWK EQUIPMENT

- 7-inch full-colour customizable in-cluster display centre
- Accent-colour grille surrounds, roof rails, exterior mirrors and badging
- Black hood decal
- Exclusive cloth/leather interior with Red accent stitching
- Front and rear all-season floor mats, and cargo net
- Heavy-duty engine cooling (3.2L)
- Jeep® Active Drive Lock
- Leather-wrapped shift knob
- Locker rear axle
- Off-road suspension and locking rear axle
- ParkView® Rear Back-Up Camera<sup>11</sup>
- Red tow hooks (two front/one rear)
- Selec-Speed™ control with Hill Ascent and Hill Descent Control
- Skid plate trim on lower rear fascia
- Skid plates: fuel tank, front suspension, transmission and underbody
- Trail Rated®
- Uconnect® 8.4 multimedia centre with 8.4-inch touchscreen and 6 speakers (NAV-ready<sup>13</sup>)
- Wheels and Tires:
  - 17-inch off-road aluminum wheels and P245/65R17 OWL all-terrain tires
  - Full-size spare tire

### OPTIONAL EQUIPMENT

- 9 Amplified Speakers with Subwoofer
- 17-Inch Off-Road Aluminum Painted Black Wheels
- Cold Weather Group
- Comfort/Convenience Group
- CommandView® Dual-Pane Panoramic Sunroof
- Leather Interior Group
- SafetyTec™ Group
- Single-Disc Remote CD Player
- Technology Group
- Trailer Tow Group
- Uconnect 8.4 NAV Multimedia Centre with 8.4-Inch Touchscreen and Navigation<sup>7</sup>
- Ventilated/Memory Seat Group

## LIMITED 4x2 / 4x4

### POWERTRAIN

- 2.4L Tigershark MultiAir I-4
- 3.2L Pentastar VVT V6 with Stop/Start technology
- 9-speed automatic

### ENHANCEMENTS vs. NORTH

- 7-inch full-colour customizable in-cluster display centre
- 18-inch polished aluminum wheels and P225/55R18 BSW all-season tires
- Air conditioning with dual-zone automatic temperature control, humidity sensor and premium air filter
- Auto-dimming rearview mirror with microphone
- Bright front and rear lower accents
- Cargo compartment cover and net
- Heated front seats
- Heated, multifunctional exterior mirrors with courtesy lamps and supplemental turn signals, manual folding
- Heated steering wheel
- Keyless Enter™ n Go™ with proximity entry and push-button start
- Leather-wrapped shift knob
- ParkView Rear Back-Up Camera<sup>11</sup>
- Remote start system
- Seating:
  - Nappa leather-faced seating and premium interior accents
  - Power 12-way driver's seat including 4-way lumbar adjust
- Security alarm
- Uconnect 8.4 multimedia centre with 8.4-inch touchscreen and 6 speakers (NAV-ready<sup>13</sup>)
- Universal garage door opener<sup>14</sup>
- Windshield wiper de-icer

### 4x4 ADDS/DIFFERENCES

- Compact spare tire
- Jeep Active Drive I 4x4 system
- P225/60R18 BSW touring tires
- Selec-Terrain® Traction Management System

### OPTIONAL EQUIPMENT

- 9 Amplified Speakers with Subwoofer
- CommandView Dual-Pane Panoramic Sunroof
- Compact Spare Tire (4x2)
- Jeep Active Drive II (available on 4x4)
- Luxury Group
- SafetyTec Group
- Single-Disc Remote CD Player
- Technology Group
- Trailer Tow Group
- Uconnect 8.4 NAV Multimedia Centre with 8.4-Inch Touchscreen and Navigation<sup>7</sup>
- Wireless Charging Pad

## NORTH 4x2 / 4x4

### POWERTRAIN

- 2.4L Tigershark™ MultiAir® I-4
- 3.2L Pentastar™ Variable Valve Timing (VVT) V6 with Stop/Start technology
- 9-speed automatic

### ENHANCEMENTS vs. SPORT

- 17-inch aluminum wheels
- 115-volt auxiliary power outlet
- Ambient LED interior lighting
- Automatic headlamps
- Body-colour exterior mirrors and door handles
- Bright side window mouldings and side roof rails
- Deep-tint privacy glass
- Fog lamps
- Front-passenger fold-flat seat with in-seat storage
- Leather-wrapped steering wheel with audio controls
- Media Centre:
  - Integrated climate controls in touchscreen radio
  - SiriusXM satellite radio with one-year trial subscription<sup>9</sup>
- Power windows with front one-touch up and down

### 4x4 ADDS/DIFFERENCES

- Compact spare tire
- Jeep® Active Drive I 4x4 system
- P225/65R17 BSW all-season tires
- Selec-Terrain® Traction Management System

### OPTIONAL EQUIPMENT

- 9 Amplified Speakers with Subwoofer
- Cold Weather Group
- Comfort/Convenience Group
- CommandView® Dual-Pane Panoramic Sunroof
- Compact Spare Tire (4x2)
- Jeep Active Drive II (available on 4x4)
- ParkView® Rear Back-Up Camera<sup>11</sup>
- Power 12-Way Driver's Seat including 4-Way Lumbar Adjust
- SafetyTec™ Group
- Single-Disc Remote CD Player
- Trailer Tow Group
- Uconnect® 8.4 Multimedia Centre with 8.4-Inch Touchscreen (NAV-ready<sup>13</sup>)

## SPORT 4x2 / 4x4

### POWERTRAIN

- 2.4L Tigershark MultiAir I-4
- 3.2L Pentastar VVT V6 with Stop/Start technology
- 9-speed automatic

### INTERIOR AMENITIES

- Air conditioning with rear HVAC outlets and air filtering
- Electronic Vehicle Information Centre (EVIC)
- Front and rear carpet floor mats
- Full-length floor console, media centre electronics storage, instrument panel top storage bin, overhead console with sunglasses holder and locking glove box
- Jeep Cargo Management System

### Media Centre:

- Uconnect 5.0 with 5-inch touchscreen and 6 speakers
- Hands-free communication<sup>8</sup> with Bluetooth® streaming audio
- Two USB ports
- SD card slot
- Auxiliary input jack
- Rearview mirror with microphone

### Power windows with driver's one-touch down

### Seating:

- Cloth seating
- Rear 60/40 split-reclining seat with armrest and cup holders

### Steering wheel-mounted cruise control

### Three 12-volt auxiliary power outlets

### EXTERIOR FEATURES

- LED daytime running lights and taillamps
- Projector halogen headlamps with Black accents
- Rear window defroster, wiper and washer
- Wheels and Tires:
  - 17-inch steel wheels and P225/60R17 BSW all-season tires

### SAFETY & SECURITY

- 10 air bags<sup>12</sup> including driver and front-passenger knee blockers
- Brake stability control and Trailer Sway Control
- Electronic Park Brake
- Electronic Stability Control<sup>6</sup> with Electronic Roll Mitigation, Hill Start Assist and All-Speed Traction Control
- Keyless entry and anti-theft engine immobilizer
- Lock-on-sync tire pressure sensor, tire pressure monitoring display and tire service kit
- Power-locking fuel filler door
- Reactive front head restraints<sup>15</sup>

### CAPABILITY & FUNCTIONALITY

- 3.251 final-drive ratio (3.2L)
- 3.734 final-drive ratio (2.4L)
- 730-amp maintenance-free battery
- Aerodynamic underbody treatment

### 4x4 ADDS/DIFFERENCES

- 225/65R17 BSW all-season tires
- Compact spare tire
- Jeep Active Drive I 4x4 system
- Selec-Terrain with 4 settings

### OPTIONAL EQUIPMENT

- Bright Side Roof Rails
- Cold Weather Group
- Compact Spare Tire (4x2)
- ParkView Rear Back-Up Camera<sup>11</sup>
- Power 12-Way Driver's Seat including 4-Way Lumbar Adjust
- Security Alarm (Fleet only)
- Single-Disc Remote CD Player
- SiriusXM Satellite Radio with One-Year Subscription<sup>9</sup>
- Trailer Tow Group



## PACKAGE AND MULTIMEDIA CENTRE DETAILS

### 3.2L VARIABLE VALVE TIMING (VVT) V6 ENGINE

- 3.25l final-drive ratio
- 700-amp maintenance-free battery
- Dual bright exhaust tips
- Engine oil cooler
- Stop/Start technology

### COLD WEATHER GROUP

- All-season floor mats
- Heated front seats
- Heated steering wheel
- Leather-wrapped shift knob
- Leather-wrapped steering wheel with audio controls
- Power, heated exterior mirrors, manual folding
- Remote start system (automatic only)
- Windshield wiper de-icer

### COMFORT/CONVENIENCE GROUP

- Air conditioning with automatic dual-zone temperature control, air filtering and humidity sensor
- Auto-dimming rearview mirror with microphone
- Cargo compartment cover
- Cargo net
- Keyless Enter 'n Go™ with proximity entry and push-button start
- Power 12-way driver's seat including 4-way lumbar adjust
- Power liftgate
- Remote start system (automatic only)
- Security alarm
- Universal garage door opener<sup>14</sup>

### LEATHER INTERIOR GROUP

- Heated front seats
- Heated steering wheel
- Leather-faced seating with Red accent stitching
- Power 12-way driver's seat including 4-way lumbar adjust

### LUXURY GROUP

- Bi-xenon High Intensity Discharge (HID) headlamps
- Memory settings for driver's seat, exterior mirrors and radio
- Power liftgate
- Premium leather-faced seating
- Ventilated front seats

### SAFETYTEC™ GROUP

- Blind-Spot Monitoring<sup>12</sup> with Rear Cross-Path Detection<sup>11</sup>
- Park-Sense® Rear Park Assist System<sup>11</sup>
- Power, heated exterior mirrors with supplemental turn signals and courtesy lamps, manual folding

### TECHNOLOGY GROUP

- Adaptive Cruise Control with Stop and Go<sup>11</sup>
- Advanced Brake Assist
- Auto high-beam headlamp control
- Exterior mirrors with supplemental turn signals and courtesy lamps
- Forward Collision Warning with Active Braking<sup>11</sup>
- Lane Departure Warning with Lane Keep Assist<sup>11</sup>
- Parallel and Perpendicular Park Assist<sup>11</sup>
- Rain-sensing windshield wipers

### TRAILER TOW GROUP

- 3.517 final-drive ratio (on 4x4 models with 3.2L engine)
- 4- and 7-pin wiring harness
- Auxiliary transmission oil cooler
- Class III hitch receiver
- Full-size spare tire
- Heavy-duty engine cooling (3.2L)
- Jeep® off-road accessory kit (Trailhawk®)

### VENTILATED/MEMORY SEAT GROUP

- Memory settings for driver's seat, exterior mirrors and radio
- Premium leather-faced seating
- Ventilated front seats

### JEEP ACTIVE DRIVE I

- Disconnecting driveline system to maximize fuel economy
- Fully automatic and seamless operation in and out of four-wheel drive
- Selec-Terrain® with Auto, Snow, Sport and Sand/Mud settings
- Single-speed power transfer unit (PTU)

### JEEP ACTIVE DRIVE II

Includes all the features of Jeep Active Drive I, plus:

- Crawl ratio of 48:1 (3.2L)
- Crawl ratio of 56:1 (2.4L)
- Four-low mode that locks the front and rear driveshafts for low-speed power or towing
- Hill Descent Control
- Neutral position for flat towing
- Two-speed PTU

### JEEP ACTIVE DRIVE LOCK

Includes all the features of Jeep Active Drive II, plus:

- Locking rear differential for low-speed power in severe off-road conditions
- Selec-Speed™ control that acts as a low-speed cruise control for extreme off-road capability
- Selec-Terrain with Auto, Snow, Sport, Sand/Mud and Rock (limited availability) settings

### UCONNECT® 5.0

- 5-inch high-definition full-colour touchscreen display
- AM/FM
- Auxiliary input jack
- Charging USB port in console
- Hands-free communication<sup>9</sup> with Bluetooth® streaming audio
- HVAC control integration
- SD card slot
- USB port in media centre

### UCONNECT 8.4

Uconnect 5.0 features plus:

- 8.4-inch full-colour high-resolution touchscreen display
- NAV-ready<sup>13</sup>
- Remote USB port

### UCONNECT 8.4 NAV

Uconnect 5.0 features plus:

- Premium navigation<sup>7</sup>

## POWER AND FUEL ECONOMY

Based on 2015 *EnerGuide* fuel consumption ratings. Government of Canada test methods used. Your actual fuel consumption will vary based on driving habits and other factors. For *EnerGuide* information, please ask your retailer or visit the Government of Canada Web site: [www.vehicles.nrcan.gc.ca](http://www.vehicles.nrcan.gc.ca)

Engine and Transmission	Fuel Economy – L/100 km (mpg)		Horsepower	Torque (lb-ft)
	City	Highway		
2.4L Tigershark™ MultiAir® I-4 with 9-speed automatic (4x2)	10.9 (26)	7.7 (37)	184	171
2.4L Tigershark MultiAir I-4 with 9-speed automatic (4x4, Jeep® Active Drive I)	11.3 (25)	8.3 (34)	184	171
2.4L Tigershark MultiAir I-4 with 9-speed automatic (4x4, Jeep Active Drive II)	11.4 (25)	8.6 (33)	184	171
2.4L Tigershark MultiAir I-4 with 9-speed automatic (4x4, Jeep Active Drive Lock)	12.1 (23)	9.4 (30)	184	171
3.2L Pentastar™ VVT V6 with 9-speed automatic (4x2)	11.4 (25)	8.1 (35)	271	239
3.2L Pentastar VVT V6 with 9-speed automatic (4x4, Jeep Active Drive I)	11.6 (24)	8.5 (33)	271	239
3.2L Pentastar VVT V6 with 9-speed automatic (4x4, Jeep Active Drive II)	12.6 (22)	8.9 (32)	271	239
3.2L Pentastar VVT V6 with 9-speed automatic (4x4, Jeep Active Drive Lock)	12.2 (23)	9.0 (31)	271	239



**ABOUT THIS CATALOGUE.** Since the time of printing, some of the information you'll find in this catalogue may have been updated. Ask your retailer for details. Some of the equipment shown or described throughout this catalogue is available at extra cost. Specifications, descriptions, illustrative materials and all competitive comparisons contained herein are as accurate as known at the time this publication was approved for printing. FCA Canada Inc. reserves the right to make changes at any time without notice and without incurring obligation. For the price of the model with the equipment you desire or verification of specifications contained herein, see your Chrysler, Jeep, Dodge and Ram retailer. Chrysler, Jeep, Dodge, Ram, SRT, the Jeep grille, Cherokee, CommandView, Mopar, Park-Sense, ParkView, Selec-Terrain, Trailhawk, Trail Rated and Uconnect are registered trademarks, and Keyless Enter 'n Go, Pentastar, SafetyTec, Selec-Speed and Tigershark are trademarks of FCA US LLC. Bluetooth is a registered trademark of Bluetooth SIG, Inc. Cummins is a registered trademark of Cummins, Inc. Facebook is a registered trademark of Facebook, Inc. MultiAir is a registered trademark of C.R.F. Società Consortile per Azioni, used under licence by FCA US LLC. SIRIUS, XM and related marks and logos are trademarks of SiriusXM Radio Inc. The Twitter name, logo, Twitter T, Tweet and Twitter bird are trademarks of Twitter, Inc. in the United States and other countries. YouTube and logo are trademarks of Google Inc. ©2015 FCA Canada Inc. All rights reserved.

**MOPAR VEHICLE PROTECTION.** FCA Canada Inc. has a vested interest in your satisfaction and owner experience with your new vehicle. Mopar Vehicle Protection offers extended service and maintenance plans to help ensure you'll enjoy your vehicle for many years down the road – for just pennies a day. For more information on comprehensive vehicle coverage, see your local Chrysler, Jeep, Dodge and Ram retailer or call (800) 465-2001.

**WARRANTIES.** 2016 Chrysler, Jeep, Dodge and Ram vehicles are backed by a 5-year or 100,000-kilometre fully transferable Powertrain Limited Warranty\* with \$0 deductible plus 24-hour roadside assistance.<sup>†</sup> SRT vehicles are backed by a 3-year or 60,000-kilometre fully transferable Powertrain Limited Warranty\* with \$0 deductible plus 24-hour roadside assistance. Basic Warranty coverage is for 3 years or 60,000 kilometres.<sup>‡</sup> Rust-through coverage on all body sheet metal is for 3 years. The Cummins Turbo Diesel engine is protected by a separate Limited Warranty, covering the engine for 5 years or 160,000 kilometres.<sup>§</sup> The EcoDiesel engine is backed by a 5-year or 100,000-kilometre fully transferable Powertrain Limited Warranty\* with \$0 deductible plus 24-hour roadside assistance.<sup>¶</sup>

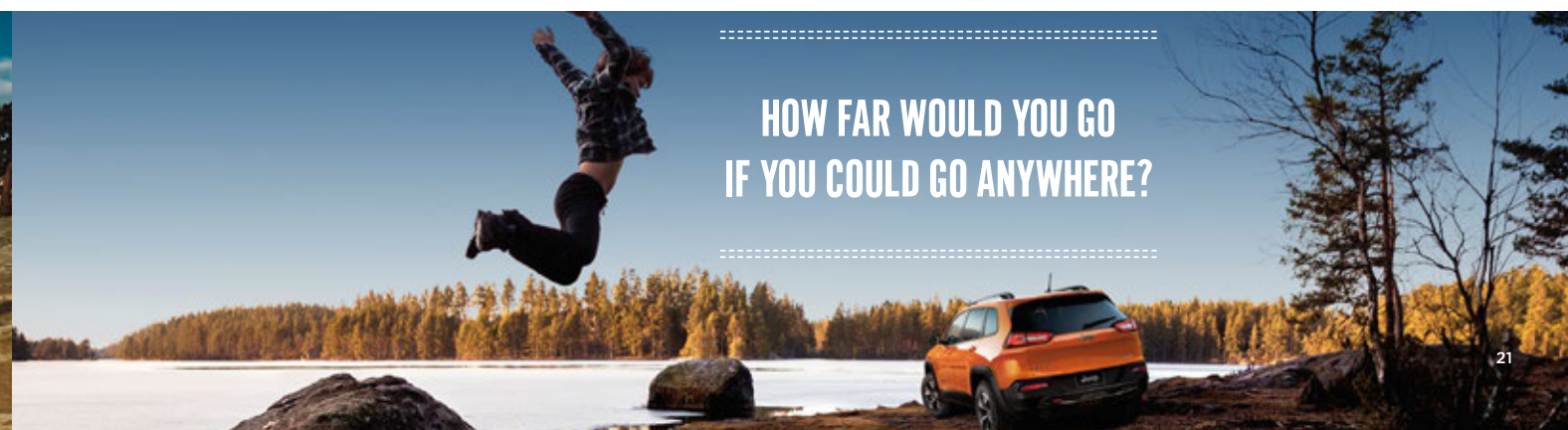
\*Whichever comes first. Some conditions may apply. †The 5-Year/100,000-Kilometre Powertrain Limited Warranty does not apply to vehicles sold for certain commercial uses. See your retailer for full details.

**DISCLAIMERS.** (1) Based on *WardsAuto* Middle Cross Utility segmentation. Best-in-class capability based on Jeep Cherokee offering 2 speed power transfer unit (PTU) with rear locking axle, exclusive Jeep Selec-Terrain with 5 settings (including rock), and industry first: fully disconnecting drive-line, best-in-class towing (excluding 7-8 passenger vehicles), approach angle, departure angle, ramp breakerover angle. (2) Based on *WardsAuto* Middle Cross Utility segmentation (3) Based on IHS Automotive: Polk Canadian New Vehicle Registrations as of CYTD October 2014 in all SUV segments combined as defined by FCA Canada Inc. (4) Based on *WardsAuto* Middle Cross Utility segmentation. Excludes 7 and 8 passenger vehicles. When equipped with 3.2L Pentastar™ VVT V6 engine with Trailer Tow Group. (5) Do not attempt water fording unless depth is known to be less than 51 cm (20 inches). Traversing water can cause damage that may not be covered by the new vehicle warranty. Always off-road responsibly in approved areas. (6) No system can repeal the laws of physics or overcome careless driving actions. Performance is limited by available traction, which snow, ice and other conditions can affect. When the warning lamp flashes, the driver needs to use less throttle and adapt speed and driving behaviour to prevailing road conditions. (7) Never program while driving. GPS mapping and available 3D navigation may not be detailed or available in all areas or reflect current road regulations. (8) Driving while distracted can result in loss of vehicle control. Only use mobile phones and other devices, even with voice commands, when it is safe to do so. Voice commands of phone require a Bluetooth compatible phone. (9) Requires SiriusXM radio subscriptions governed by SIRIUS terms and conditions available at [siriusxm.ca](http://siriusxm.ca) (10) Preset voice to text messaging and incoming text message reading requires a MAP enabled phone. (11) This is a driver convenience system, not a substitute for active driver involvement. The driver must remain aware of their surroundings and be prepared to take corrective action to avoid collisions. (12) The advanced front air bags in this vehicle are certified to the federal regulations for advanced air bags. Children 12 years old and younger should always ride buckled up in a rear seat. Infants in rear-facing child restraints should never ride in the front seat of a vehicle with a passenger front air bag. All occupants should always wear their lap and shoulder belts properly. (13) Additional fees will apply for Dealer Activated Navigation. (14) Not compatible with all garage door openers. (15) Always sit properly with the head restraint properly adjusted. Never place anything in front of the head restraint.

## SPECIFICATIONS

Towing (when properly equipped)	2.4L/3.2L		3.2L w/Trailer Tow Group	
	907 (2000)		2041 (4500)	
kg (lb)	4x2		Jeep Active Drive I 4x4	Jeep Active Drive II 4x4
Exterior, mm (in.)				Jeep Active Drive Lock 4x4 (Trailhawk®)
Overall Height with Roof Rack	1669 (65.7)	1681 (66.2)	1709 (67.3)	1722 (67.8)
Overall Width	1859 (73.2)	1859 (73.2)	1859 (73.2)	1902 (74.9)
Overall Length	4624 (182)	4624 (182)	4624 (182)	4624 (182)
Ground Clearance, Minimum Running	145 (5.7)	201 (7.9)	201 (7.9)	223 (8.8)
Interior, mm (in.)	Front		Rear	
Headroom	999.9 (39.4)		978 (38.5)	
Legroom	1044 (41.1)		1023 (40.3)	
Hip Room	1366 (53.8)		1268 (49.9)	
Shoulder Room	1462 (57.6)		1399 (55.1)	
Volumes and Capacities				
Cargo, Rear Seat Up and Fully Back, L (cu ft)			697 (24.6)	
Cargo, Rear Seat Up and Fully Forward, L (cu ft)			824 (29.1)	
Cargo, Rear Seat Folded, L (cu ft)			1554 (54.9)	
Fuel Tank Capacity, L (imp gal)			60 (13.1)	

For full specifications and package details, visit [jeep.ca](http://jeep.ca)



HOW FAR WOULD YOU GO  
IF YOU COULD GO ANYWHERE?

# Jeep®



jeep.ca

Like us on:  
[facebook.com/jeepcanada](https://facebook.com/jeepcanada)



Follow us on:  
[twitter.com/jeepcanada](https://twitter.com/jeepcanada)



Watch us on:  
[youtube.com/jeepcanada](https://youtube.com/jeepcanada)



Sign up for updates at:  
[jeep.ca](https://jeep.ca)

