

2017





The 2017 ILX stirs your imagination with an aggressive powertrain, forceful exterior styling and premium interior design.

CATCH IT
IF YOU CAN



PERFORMANCE

LIGHTNING IN A BOTTLE

POWER

FEATHERWEIGHT CONTENDER

Beauty meets beast. The impressive 201-hp, 2.4-litre i-VTEC® engine in the ILX gives it a remarkable power-to-weight ratio, making you more nimble and quick on the road.

Horsepower and torque calculations reflect SAE net, Rev. 08/04, SAE J1349 procedures.



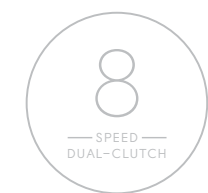
PERFORMANCE

POWER TO THE PEDAL



DIRECT INJECTION
DRIVE LIKE DYNAMITE

The direct-injection system in the ILX delivers fuel pressurized at up to 2,900 psi, giving the engine more power and better efficiency.



TRANSMISSION
DELAY IS THE ENEMY

The ILX's 8-speed dual-clutch transmission with torque converter is engineered to be a step ahead, delivering rapid yet smooth transitions and lightning-quick responses.



PADDLE SHIFTERS
CONTROL FREAK

Race-inspired control. Up or downshift and take full advantage of the quick-reacting dual-clutch transmission. With paddle shifters on all trims, you'll experience more control and a more direct connection to the car.



PERFORMANCE

HANDLE EVERY
INCH OF THE ROAD

SUSPENSION
WELL ADJUSTED

React to the road ahead. The ILX is equipped with Amplitude Reactive Dampers that are engineered to give you the best of whatever the situation demands. They operate in two unique performance zones, helping to offer both a composed, comfortable ride and precise handling.

RESPONSIVE STEERING
FLEX YOUR REFLEXES

Tailor-made turns. The ILX has sport-tuned steering that is designed to allow the vehicle to respond instinctively with the driver, thus reacting quicker and more directly to the driver's input for a more accurate and reassuring feel.



DESIGN

PERFECTION FROM EVERY ANGLE



EXTERIOR DESIGN

IT'S HARD NOT TO STARE

The bold, aggressive design of the ILX features a distinctive front end, highlighted by standard Jewel Eye™ LED headlights, an eye-catching grille design and aggressive front and rear lower fasciae.

LED HEADLIGHTS

READY, SET, GLOW

Acura's signature Jewel Eye™ LED headlight system presents an array of lighting with a total of ten separate, highly-focused LEDs with optical lenses to provide powerful down-the-road illumination.

QUIET CABIN

DOES NOT DISTURB

Did you hear that? Neither did we. With Active Noise Control to help cancel out unwanted engine sounds and standard noise-reducing wheels to cut resonance, the ILX is remarkably quiet.

A-SPEC

LOOKS ARE EVERYTHING

The A-Spec appearance package gives the ILX an even sportier look with brilliant fog lights, machine-finished 18" alloy wheels, side skirts and a deck lid spoiler. The interior look is complete with stainless steel sport pedals, red instrument illumination, Lux-Suede-trimmed sport seats, black headliner and contrast stitching.



DESIGN

SAFETY IS CONFIDENCE

THRIVES UNDER PRESSURE
STRENGTH FROM WITHIN

Acura's Advanced Compatibility Engineering™ body structure is designed to absorb and more evenly distribute energy from impact, regardless of how big or small the other vehicle may be. So, in the case of a crash, the vehicle is engineered to transfer energy around the vehicle and away from passengers.



THE WORLD AT YOUR FINGERTIPS

ACURALINK™ AT YOUR SERVICE

The available AcuraLink^{§,*Δ} connectivity system can send destination information directly to your car and reroute your journey based on highway conditions. Stream music content and drive with added confidence knowing you have access to 24/7 Enhanced Roadside Assistance and even your own personal concierge. Not near your car? No problem. The Connect app acts as a remote and tool for diagnostics. Lock and unlock your car and check tire pressure and fuel level, all from the convenience of an app. All three tiers of services are complimentary for the first year of ownership.

REMOTE CONTROL STARTER START YOUR ENGINES

The ILX comes with a standard remote starter that's detected from a long distance away, so the engine has begun to warm up and the cabin is either heated or cooled appropriately on entry. Even the defrost will help to preemptively clear the windshield on those ice-cold days.

NAVI

MAKE EVERY TURN A SHORTCUT
The ILX's available Acura Navigation System with Voice Recognition^{†,‡} gathers street and highway information to help you dodge traffic and reduce stress. The available iPhone® Navigation app^{‡‡} acts as an alternative to embedded navigation, seamlessly transferring map information from your compatible iPhone to your vehicle's navigation screen. Simply download the Navigation app for a convenient way to keep your eyes on the road ahead.

SIRI EYES FREE^{§,*}

**A PERSONAL ASSISTANT THAT
WON'T STEER YOU WRONG**
Read and respond to incoming texts and emails, set reminders and alarms, get turn-by-turn voice navigation and even check the weather—all with your hands on the wheel.

ODMD

YOUR TOUCH IS OUR COMMAND
The available On-Demand Multi-Use Display™ gives you the ability to adjust climate control settings and select preferred audio, including available SiriusXM,[™] all on an easy-to-use touch screen with haptic feedback.

§None of the features we describe are intended to replace the driver's responsibility to exercise due care while driving. Drivers should not use handheld devices or operate certain vehicle features unless it is safe and legal to do so. Some features have technological limitations. For additional feature information, limitations and restrictions, please visit www.acura.ca/disclaimers and refer to the vehicle's owner's manual.

*Only compatible with certain devices and operating systems. Cellular data and/or voice charges may apply, including roaming charges and/or other amounts charged by your wireless carrier.

ΔSubscription required. One year complimentary subscription to AcuraLink Standard, AcuraLink Connect, and AcuraLink Premium included, after which fees, taxes and other charges will apply in order to continue subscription. The availability of certain cellular networks is required for AcuraLink to operate properly. Service interruptions may occur and/or vehicle system upgrades may be required if cellular network availability is compromised. Ask your dealer for full terms and conditions.

†Map database covers major metropolitan areas in Canada and the 48 contiguous U.S. states.

‡Only available in certain areas. Includes a no-charge trial of three months.

‡‡Requires one-time download of AcuraLink™ navigation application (CAD\$84.99 plus applicable taxes). Price is subject to change.



TECHNOLOGY

CRUISE TO THE BEAT

AUDIO SYSTEM
HEAR NO EVIL

Developed by Grammy Award®-winning music producer Elliot Scheiner, Acura's available ELS Surround® Premium Audio System transforms your vehicle into a personal soundstage—whether it's Aha,^{†§} SiriusXM^{™†} or Bluetooth® Audio.^{§*} Between the studio-grade equipment and the ILX's purposefully quiet cabin, enjoy extended frequency range, lower distortion, enhanced clarity and transparency to create an audio experience like no other.

§None of the features we describe are intended to replace the driver's responsibility to exercise due care while driving. Drivers should not use handheld devices or operate certain vehicle features unless it is safe and legal to do so. Some features have technological limitations. For additional feature information, limitations and restrictions, please visit www.acura.ca/disclaimers and refer to the vehicle's owner's manual.

*Only compatible with certain devices and operating systems. Cellular data and/or voice charges may apply, including roaming charges and/or other amounts charged by your wireless carrier.

†Only available in certain areas. Includes a no-charge trial of three months.



TECHNOLOGY

ALL EYES ON DECK

ACURAWATCH™

SAFETY IS OUR SIXTH SENSE.

Advanced driver assistance features such as the standard multi-angle rearview camera[§] are designed to allow you to watch the road around you, offering warnings and even taking action when you need it. From guiding you back to the centre of your lane if you begin to drift or braking if you get too close to the car ahead, AcuraWatch™[§] is designed to help minimize threats—and stress—no matter where you're headed.

§None of the features we describe are intended to replace the driver's responsibility to exercise due care while driving. Drivers should not use handheld devices or operate certain vehicle features unless it is safe and legal to do so. Some features have technological limitations. For additional feature information, limitations and restrictions, please visit www.acura.ca/disclaimers and refer to the vehicle's owner's manual.

ENGINE	
Engine	2.4-litre, 16-valve, Direct Injection DOHC, i-VTEC® 4-cylinder
Horsepower	201 hp @ 6800 rpm
Torque	180 lb.-ft. @ 3600 rpm
Displacement	2356 cc
Bore and stroke	87 x 99 mm
Compression ratio	11.6:1
Direct fuel injection system	
Recommended fuel	Premium unleaded
Horsepower and torque calculations reflect SAE net, Rev. 08/04, SAE J1349 procedures.	

DRIVETRAIN
8-speed dual-clutch transmission with paddle shifters
Drive-by-Wire Throttle System™
Hill Start Assist [‡]
Front-wheel drive

SAFETY FEATURES
3-point seat belts with Automatic Tensioning System (front)
4-wheel Anti-lock Braking System [‡] (ABS) with Electronic Brake-force Distribution (EBD) and Brake Assist
Advanced Compatibility Engineering™ (ACE™) body structure
Childproof rear door locks
Collision Mitigation Braking System™ [‡] (CMBS [®])
Dual-stage, multiple-threshold front airbags (SRS)
Front side airbags
Forward Collision Warning (FCW) system [‡]
Immobilizer theft-deterrent system
Lane Departure Warning (LDW) system [‡]
Lane Keeping Assist System [‡] (LKAS)
Road Departure Mitigation (RDM™) system [‡]
Security system
Side curtain airbags
Tire Pressure Monitoring System [†] (TPMS) with location and pressure indicators
Vehicle Stability Assist (VSA [®]) [‡] with Traction Control

CHASSIS
17" x 7" alloy wheels
Amplitude Reactive Damper
Front and rear stabilizer bars
MacPherson strut front suspension
Motion-Adaptive Electric Power-Assisted Rack-and-Pinion Steering (EPS)
Multi-link rear suspension
Power-assisted, ventilated front disc/solid rear disc brakes
Tires: P215/45 R17 87V all-season
Tire Repair Kit (TRK)

CAPACITIES	
Fuel tank capacity	50 litres
Passenger volume	2530 litres
Cargo volume (ILX/Premium,Technology, and A-Spec)	350/348 litres

SEATING & TRIM
Driver’s seat with manual height adjustment
Floor mats
Fold-down rear seatback
Fold-down rear-seat centre armrest
Leather-wrapped steering wheel and shift knob

EXTERIOR
Body-coloured door handles
Body-coloured heated power side mirrors with expanded view driver’s mirror
Front splash guards
Jewel Eye™ LED headlights
One-touch power moonroof with tilt feature

COMFORT & CONVENIENCE
Active Noise Control (ANC)
Adaptive Cruise Control [‡] (ACC)
Auto-on/off headlights
Ambient cabin lighting
Driver’s and front passenger’s illuminated vanity mirrors
Dual-zone automatic climate control system with air filtration
HandsFreeLink™-Bluetooth [®] wireless mobile phone interface ^{‡,***} with steering wheel-mounted controls
One-touch directional signals
Maintenance Minder™ system
Map lights
Multi-angle rearview camera [‡] with guidelines
Multi-Information Display (MID) with colour TFT display
Power windows with driver’s and front passenger’s auto-up/down operation
Remote engine starter
Smart entry with pushbutton start
SMS text message function**
Steering wheel-mounted audio and cruise controls
Tilt and telescopic steering column
Variable intermittent windshield wipers

ENTERTAINMENT
Premium Sound System with AM/FM/CD tuner with MP3/Windows Media [®] Audio capability and 6 speakers
MP3/auxiliary input jack
USB device connector**

EXTERIOR DIMENSIONS	
Curb weight	1397 kg
Curb weight (Premium/Technology Package)	1415 kg
Curb weight (A-Spec Package)	1424 kg
Ground clearance – full-load	112 mm
Gross vehicle weight rating	1815 kg
Gross vehicle weight rating (Premium/Technology Package)	1825 kg
Gross vehicle weight rating (A-Spec Package)	1835 kg
Height	1412 mm
Length	4620 mm
Steering ratio	15.28
Steering turns lock-to-lock	2.77
Track – front/rear	1509/1528 mm
Wheelbase	2670 mm
Width	1794 mm

INTERIOR DIMENSIONS	
Headroom – front/rear	964/913 mm
Hip room – front/rear	1276/1312 mm
Legroom – front/rear	1074/864 mm
Shoulder room – front/rear	1412/1360 mm
Seating capacity	5

FUEL ECONOMY	
City/Hwy/Combined	9.4/6.8/8.2 litres/100 km*

EXTERIOR DIMENSIONS	
Curb weight	1397 kg
Curb weight (Premium/Technology Package)	1415 kg
Curb weight (A-Spec Package)	1424 kg
Ground clearance – full-load	112 mm
Gross vehicle weight rating	1815 kg
Gross vehicle weight rating (Premium/Technology Package)	1825 kg
Gross vehicle weight rating (A-Spec Package)	1835 kg
Height	1412 mm
Length	4620 mm
Steering ratio	15.28
Steering turns lock-to-lock	2.77
Track – front/rear	1509/1528 mm
Wheelbase	2670 mm
Width	1794 mm

INTERIOR DIMENSIONS	
Headroom – front/rear	964/913 mm
Hip room – front/rear	1276/1312 mm
Legroom – front/rear	1074/864 mm
Shoulder room – front/rear	1412/1360 mm
Seating capacity	5

FUEL ECONOMY	
City/Hwy/Combined	9.4/6.8/8.2 litres/100 km*

PREMIUM PACKAGE (Adds to ILX features)
Automatic day/night rearview mirror
8-inch LED backlit VGA display
8-way power adjustable driver’s seat and 2-position memory
4-way power adjustable front passenger’s seat
Blind Spot Information (BSI) system [‡]
Cross Traffic Monitor system [‡]
Heated front seats
Leather-trimmed seats
On-Demand Multi-Use Display™
Premium Sound System with SiriusXM™ [†] and 7 speakers including subwoofer

TECHNOLOGY PACKAGE (Adds to Premium Package)
Acura Navigation System with Voice Recognition™ ^{‡,†,Δ}
Acura/ELS Surround [®] Premium Audio System with AM/FM/CD/SiriusXM,™ [†] 10 speakers, hard disk drive (HDD) media storage and Dolby [®] Pro Logic™ II
AcuraLink™ ^{‡,**,Δ} connectivity system
HomeLink [®] remote system***
Rain-sensing windshield wipers

A-SPEC PACKAGE (Adds to Premium Package)
18" x 7.5" alloy wheels
Tires: P225/40 R18 92V all-season
Acura Navigation System with Voice Recognition™ ^{‡,†,Δ}
Acura/ELS Surround [®] Premium Audio System with AM/FM/CD/SiriusXM,™ [†] 10 speakers, hard disk drive (HDD) media storage and Dolby [®] Pro Logic™ II
AcuraLink™ ^{‡,**,Δ} connectivity system
Fog lights
HomeLink [®] remote system***
Rain-sensing windshield wipers
Side skirts and deck lid spoiler
Black headliner
Metal racing pedals
Lux-Suede seating surfaces

EXTERIOR DIMENSIONS	
Curb weight	1397 kg
Curb weight (Premium/Technology Package)	1415 kg
Curb weight (A-Spec Package)	1424 kg
Ground clearance – full-load	112 mm
Gross vehicle weight rating	1815 kg
Gross vehicle weight rating (Premium/Technology Package)	1825 kg
Gross vehicle weight rating (A-Spec Package)	1835 kg
Height	1412 mm
Length	4620 mm
Steering ratio	15.28
Steering turns lock-to-lock	2.77
Track – front/rear	1509/1528 mm
Wheelbase	2670 mm
Width	1794 mm

INTERIOR DIMENSIONS	
Headroom – front/rear	964/913 mm
Hip room – front/rear	1276/1312 mm
Legroom – front/rear	1074/864 mm
Shoulder room – front/rear	1412/1360 mm
Seating capacity	5

FUEL ECONOMY	
City/Hwy/Combined	9.4/6.8/8.2 litres/100 km*

§ None of the features we describe are intended to replace the driver’s responsibility to exercise due care while driving. Drivers should not use handheld devices or operate certain vehicle features unless it is safe and legal to do so. Some features have technological limitations. For additional feature information, limitations and restrictions, please visit www.acura.ca/disclaimers and refer to the vehicle’s owner’s manual.

† Only available in certain areas. Includes a no-charge trial of three months.

‡ For optimal tire wear and performance, the pressure should be checked regularly with a tire gauge. Do not rely solely on the monitor system.

‡‡ Map database covers major metropolitan areas in Canada and the 48 contiguous U.S. states.

* Estimated fuel consumption based on Government of Canada’s 5-cycle testing method. Your actual fuel consumption will vary based on driving habits and other factors – use for comparison only. For more information on 5-cycle testing, visit http://vehicles.nrcan.gc.ca

** Only compatible with certain devices and operating systems. Cellular data and/or voice charges may apply, including roaming charges and/or other amounts charged by your wireless carrier.

***HomeLink[®] can be programmed with codes of up to three remote-control devices (e.g., garage-door opener, home security system, etc.).

Δ Subscription required. One year complimentary subscription to AcuraLink Standard, AcuraLink Connect, and AcuraLink Premium included, after which fees, taxes and other charges will apply in order to continue subscription. The availability of certain cellular networks is required for AcuraLink to operate properly. Service interruptions may occur and/or vehicle system upgrades may be required if cellular network availability is compromised. Ask your dealer for full terms and conditions.

COLOUR & TRIM

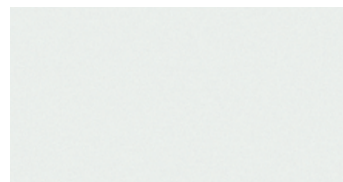
Our colour and trim range is an extension of our commitment to craftsmanship and elegance. A palette of timeless exterior colours is complemented by equally refined interior options and a superior grade of leather and fabric trims. These are the finishing touches that elevate your relationship with your Acura, and the road, at every turn.

EXTERIOR COLOURS

INTERIOR ILX

INTERIOR ILX PREMIUM AND TECHNOLOGY PACKAGES

INTERIOR ILX A-SPEC PACKAGE



Bellanova White Pearl
NH-788P



Ebony Premium Cloth



Ebony or Parchment Leather

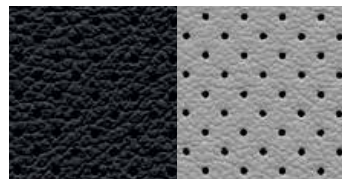


Ebony Lux-Suede



Catalina Blue Pearl
B-612P

N/A



Ebony or Greystone Leather



Ebony Lux-Suede



Crystal Black Pearl
NH-731P



Ebony Premium Cloth



Ebony or Parchment Leather



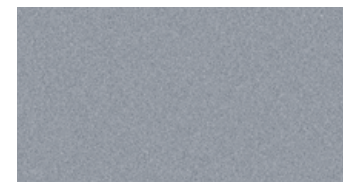
Ebony Lux-Suede

EXTERIOR COLOURS

INTERIOR ILX

INTERIOR ILX PREMIUM AND TECHNOLOGY PACKAGES

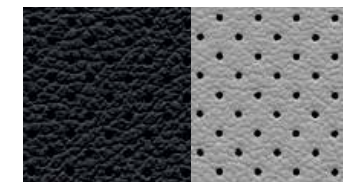
INTERIOR ILX A-SPEC PACKAGE



Lunar Silver Metallic
NH-830M



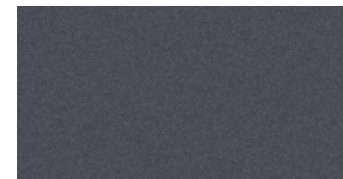
Ebony Premium Cloth



Ebony or Greystone Leather



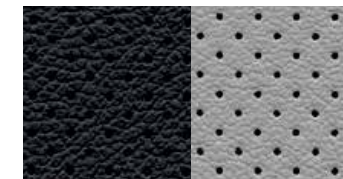
Ebony Lux-Suede



Modern Steel Metallic
NH-797M



Ebony Premium Cloth



Ebony or Greystone Leather

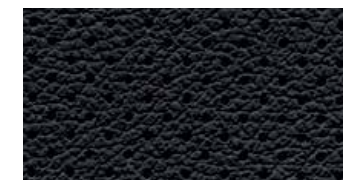


Ebony Lux-Suede



San Marino Red
R-94

N/A



Ebony Leather



Ebony Lux-Suede

ACCESSORIES

Choose from an array of Acura Genuine Accessories that give you the practical luxuries and advanced styling that will bring you together with your machine.

FUNDAMENTAL PACKAGE

Cargo hook (2)
Cargo net

AERO KIT

Rear deck lid spoiler
Rear underbody spoiler
Front underbody spoiler
Side underbody spoiler

APPEARANCE PACKAGE

Rear deck lid spoiler
Rear underbody spoiler
Front underbody spoiler
Side underbody spoiler
18" Alloy wheel – Diamond cut

PROTECTION PACKAGE

All-season floor mats
Rear splash guards
Trunk tray

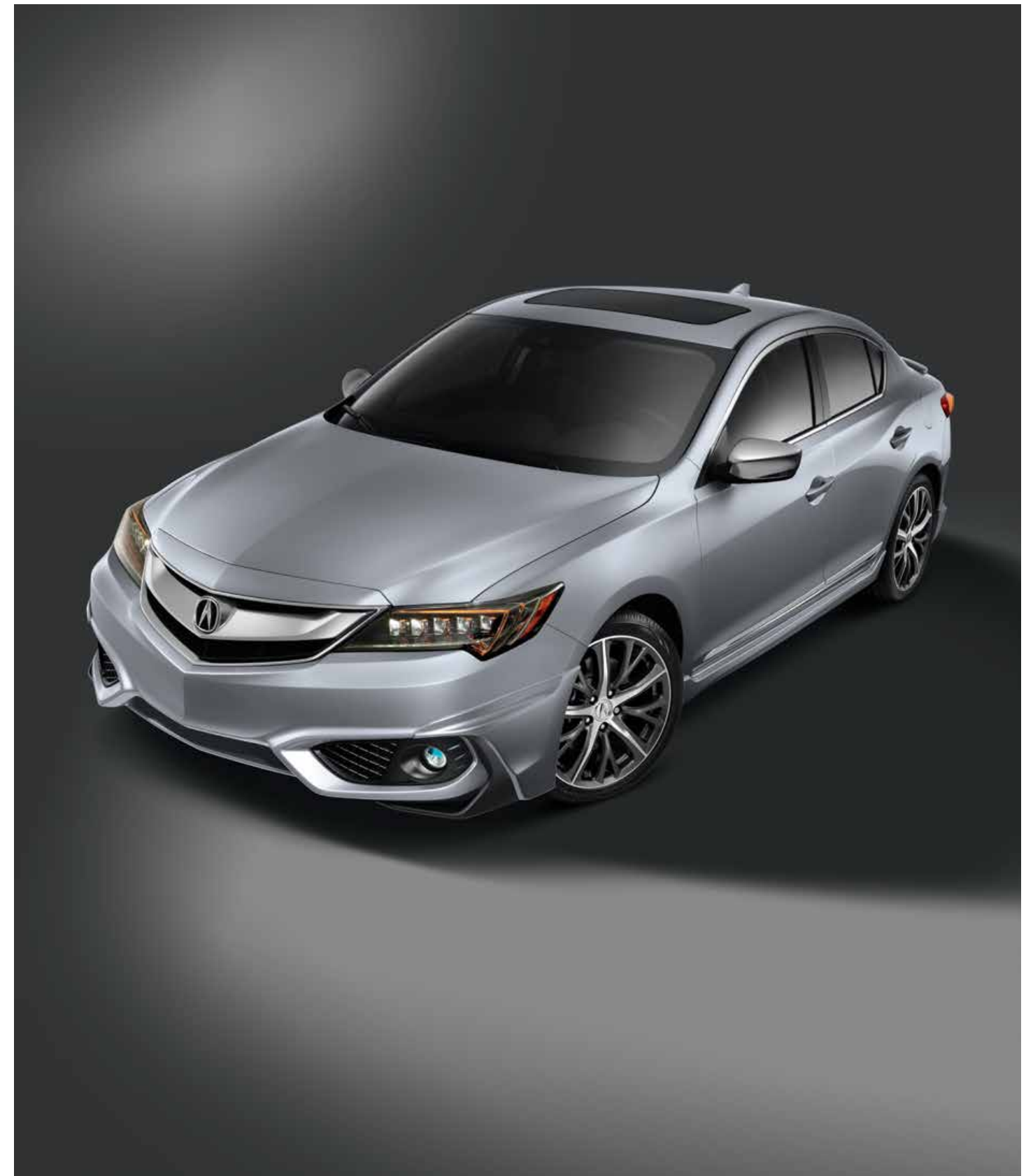
Accessories listed in the packages may also be added individually to your ILX.

SHOWROOM PACKAGE

All-season floor mats
Trunk tray
Illuminated door sill trim

ADDITIONAL ACCESSORIES AVAILABLE

Ashtray, cup-holder style
Auto day/night mirror
Body side molding
Car cover
Door edge film
Door mirror cover, chrome
Engine block heater
Hood edge deflector
Illuminated door sill trim
LED fog lights
Lower door garnish, chrome
Paint pen
Rear back-up sensors
Rear bumper appliqué
Rear splash guards
Trunk edge and bumper protector
Wheel locks



Accessories and packages are subject to inventory availability.



ALL-SEASON FLOOR MATS



LED FOG LIGHTS



BODY SIDE MOLDING



CAR COVER



REAR DECK LID SPOILER
REAR BACK-UP SENSORS



TRUNK TRAY



DOOR MIRROR COVER,
CHROME



REAR BUMPER APPLIQUE

Driving a luxury vehicle should go beyond engineering and amenities. That's why Acura is committed to ensuring your ownership experience is equally luxurious. New Acura owners benefit from four-year 24-hour Roadside Assistance, which includes Dispatch Emergency Roadside Service, Emergency Lockout Service and Traffic Accident Services. See your Acura Retailer for details.



WARRANTY

Your new Acura vehicle comes with the following warranties:

- Major Component – 5-year/100,000-km limited warranty
- Vehicle – 4-year/80,000-km Distributor's limited warranty
- Rust Perforation – 5-year unlimited-distance warranty
- Surface Corrosion – 4-year/ 80,000-km
- Accessories – 4-year/80,000-km limited warranty

(when installed by an authorized Acura Retailer at time of new vehicle delivery). Regular maintenance items and parts are subject to normal wear and replacement, and are not covered by warranty. Certain other items are excluded and certain conditions apply. See your Acura Retailer for details.

ACURA PLUS

Extend your worry-free ownership experience by purchasing additional coverage. Choose from Acura's flexible selection of Mechanical Coverage that extends up to 8 years or 200,000 km, whichever comes first. See your Acura Retailer for details.

LEASING AND FINANCING

Owning your Acura is easy. See your Acura Retailer for complete details on Conventional Financing.*

*A genuine service of Acura Financial Services. Conditions, restrictions and prepayment requirements might apply O.A.C.

Always use seat belts and appropriate child seats. Children 12 and under are safest when properly restrained in a rear seat. Properly secure all items stored in the cargo area. Always read the vehicle owner's manual for detailed vehicle operation and feature information.

Acura Canada reserves the right to terminate or change any of the services and/or features listed in this brochure at any time, without notice or obligation, in colours, specifications, accessories, materials and models. 2016 ILX model shown in brochure. Some vehicles are shown with optional equipment. Some vehicles shown are U.S. models. Canadian specifications may vary. Aha, the Aha logo, and the Aha trade dress are trademarks or registered trademarks of HARMAN International Industries. Bluetooth is a registered trademark of SIG Inc. Dolby and Pro Logic are registered trademarks or trademarks of Dolby Laboratories. ELS Surround is a registered trademark of Panasonic Corporation of North America. Grammy is a registered trademark of National Academy of Recording Arts & Sciences, Inc. HomeLink and HandsFreeLink are registered trademarks or trademarks of Johnson Controls Technology. Siri and iPhone are trademarks of Apple Inc., registered in the U.S. and other countries. Windows Media is a registered trademark of Microsoft Corporation. © 2016 Sirius XM Canada Inc. "SiriusXM", the SiriusXM logo, channel names and logos are trademarks of SiriusXM Radio Inc. and are used under license. Acura, AcuraLink, AcuraWatch, ILX, i-VTEC, ACE, Advanced Compatibility Engineering, Acura Navigation System with Voice Recognition, Collision Mitigation Braking System, CMBS, Drive-by-Wire Throttle System, Jewel Eye, Maintenance Minder, On-Demand Multi-Use Display, RDM and VSA are trademarks of Honda Motor Co., Ltd. Acura Canada, a division of Honda Canada Inc., 180 Honda Boulevard, Markham, Ontario, Canada L6C 0H9. 1-888-9-ACURA-9. www.acura.ca.