



2019 MAZDA CX-5



WELCOME TO THE CLUB.

A Mazda is never just a Mazda.
It's a feeling.

It's a shot of anticipation just
before you press start.

It's that urge to take one last
look as you walk away.

It's the notion that a vehicle
should move your body
as well as your soul.

It's a love affair with the road.
Any road.

It's a knowing glance that
passes between Mazda drivers.

It's the feeling that you don't just
own a Mazda, you have a lifelong,
irrevocable membership in
The Clubhouse of Driving Passion.

MAZDA CX-5.

We created the Mazda CX-5 to transcend the ordinary. From a quiet cabin designed to engage you with the road to the precise placements of the steering wheel and accelerator pedal, each component of the CX-5 is designed to heighten every drive. The new CX-5 Signature offers multi-sensory experiences never before available in the CX-5, including the Skyactiv-G 2.5 T Dynamic Pressure Turbo engine,* ventilated front seats† and an infotainment system integrated with Apple CarPlay™ and Android Auto™. Meticulously crafted to evoke emotion, the CX-5 rises above the expected.

*Optional on the GT model and standard on the Signature model.
†Standard on the GT and Signature models.





「魂動」 KODO Soul of Motion

Our design philosophy is simple, yet highly challenging to accomplish: Capture energy in motion, even at a standstill. With curves and angles so striking they command your attention through a mere glance. Exciting you by the anticipation of what's to come. Eliciting this kind of instant emotional response requires a human touch. Created for humans by humans. Hands on clay, shaping form with warmth and precision. Eliminating all that is unnecessary, leaving only what is beautiful. We call this Kodo: "Soul of Motion" design. A dynamic sense of motion that urges you to get behind the wheel, to experience the unique energy that can only come from a Mazda.

SKYACTIV TECHNOLOGY

RESPONSIVE. AND RESPONSIBLE.

Only a company committed to creating the ideal driving experience could engineer Skyactiv Technology. From the chassis to the transmission to the engine and beyond, we've designed every single aspect of the CX-5 to be powerful, yet efficient. Now available on the CX-5 GT and standard on the CX-5 Signature, you can enjoy immediate acceleration when and where you need it most with the Skyactiv-G 2.5 T Dynamic Pressure Turbo, delivering up to 250 hp* and a best-in-class 310 lb-ft of torque†. And outstanding fuel efficiency without sacrificing the joy of driving.



SKYACTIV-G 2.5 L ENGINE

CYLINDER DEACTIVATION

SKYACTIV-G 2.5 T DYNAMIC PRESSURE
TURBO ENGINE

SKYACTIV-DRIVE AUTOMATIC TRANSMISSION

SKYACTIV-CHASSIS

SKYACTIV-BODY

AUTO-HOLD FUNCTION

SKYACTIV-VEHICLE DYNAMICS

mazda.ca/skyactiv

*227 hp @ 5,000 rpm when using AKI 87 regular gasoline. Maximum output with AKI 93 premium gasoline is 250 hp @ 5,000 rpm.

†The 2019 CX-5 achieves best-in-class torque when equipped with Skyactiv-G 2.5 T Dynamic Turbo Pressure engine as compared to 2018 and 2019 model year vehicles within the Compact SUV Global Automakers of Canada segmentation. Based on information available at the time of brochure publication.



「人馬一體」 ONENESS
Connecting car and driver

Every Mazda aspires to the same single goal: oneness between the vehicle and its driver. When you experience this seamless connection, your senses become heightened. You engage with the moment and leave all distractions behind. You feel energized. Rejuvenated. Feeling better than when you first stepped in – during the drive – and after. From the meticulous consideration of our design to how our cars effortlessly respond to even your slightest direction, each detail in the Mazda CX-5 offers you a pure driving experience.



CANADA'S WORST CONDITIONS ARE OUR BEST TEST.

When meticulous engineering meets an unwavering commitment to quality, the result is unmistakably Mazda. We test in some of Canada's most extreme climates and conditions to ensure our vehicles can withstand the elements. From corrosive climates, such as the high-salt content in the air in Halifax, to extreme cold in Lac Saint-Jean, Quebec, your CX-5 is ready to withstand Canada's weather conditions.

CORROSIVE CLIMATES

With salt water blowing off the ocean, and more hydrogen in the air than normal, Halifax is the perfect storm for corrosion. That's why we recruit Mazda owners from Halifax and assess how their vehicles fare against the climate.

EXTREME COLD

The frigid temperatures and dramatic snowfalls of Lac Saint-Jean, Quebec, help us test for the immediate effects of cold weather. This helps us ensure the reliability of our vehicles in the most extreme winter conditions.

WINTER ROADS

Montreal uses a destructive combination of salt and gravel on icy roads. This mixture can chip the paint, exposing metal that can be vulnerable to corrosion. We test here so that our vehicles are prepared for this threat.

i-ACTIV AWD

IDEAL DRIVING IN EVERY CONDITION.

Control. It's the foundation of why we engineer our available all-wheel-drive system.* Giving you confidence on the road. In any condition. Our i-Activ AWD helps predict the possible loss of traction by actively monitoring everything from outside temperature and windshield wiper usage to the driver's steering and braking patterns. If, for example, the outside temperature is cold enough for snow and your windshield wipers are on, the AWD system recognizes that the roads might be slippery and prepares for possible front-wheel slip. If the wheels do in fact slip, the system can quickly transfer engine power to the rear axle, helping provide the grip you need. It's an innovative solution that carefully considers you and your well-being. Empowering you to enjoy every drive, no matter the conditions.



*Optional on the GX and GS models and standard on the GT and Signature models.



DESIGN WITH A SINGLE FOCUS: YOU.

The 2019 Mazda CX-5 is artfully crafted around you, the driver. With each carefully engineered detail, from the steering wheel centred to your body to the ergonomic floor-mounted gas pedal, the car becomes seamlessly connected to you. Every dial, button and knob throughout the cockpit is positioned to be exactly where you expect it to be, designed for optimal interaction. New for 2019, a meter set with 7-inch LCD display has been incorporated into the instrument panel of the Signature model. This easy-to-read screen can display a wealth of vehicle information, including fuel economy and warnings from the vehicle's i-Activsense safety features. All while allowing you to focus on your drive ahead.



ENGINEERED TO ENGAGE.

The soul of every CX-5 is the unique feeling of unison between driver and vehicle. It's what we call *Jinba Ittai* – the Japanese principle of horse and rider as one. The human-centric cabin is meticulously crafted to engage your senses, so you can drive skillfully and comfortably. Beautifully tactile surfaces blend warmth and strength. Painstaking efforts were made to ensure superb cabin quietness, including sound-insulating glass with extensive seal insulation. And an abundance of standard features like heated front seats makes any road trip an engaging proposition. Because every driver deserves to be fully connected to the drive.



MAKE A SMARTER CONNECTION.

Keeping you connected to your world while keeping your eyes focused on the road, the CX-5 is as intuitive as it is interactive. The Mazda Connect infotainment system has been enhanced with standard Apple CarPlay™ integration. Access your iPhone's maps, playlists, contacts and compatible apps with your voice through Siri. Siri will also read incoming text messages and allow you to reply without taking your hands off the wheel. You can also navigate the features of Apple CarPlay™ with the optimally positioned, multifunction Commander control. For Android users, Android Auto™ integration is also standard. Mazda Connect is designed to minimize mental and physical dissonance, keeping you in close touch no matter how far you travel.



BALANCING SILENCE AND SOUND.

Too much road noise can be distracting and tiresome. Not enough can be disorienting. The Mazda CX-5 is engineered to insulate you from the overall exterior noise that penetrates the cabin, while still allowing for subtle sounds from the road and engine. Your connection to the road is heightened. Your levels of stress and fatigue are lowered. It's all about shielding you from all that is unnecessary, so you can focus on what will bring you joy.

ENTERTAIN

COMMUNICATE

NAVIGATE





i-ACTIVSENSE

TO HEIGHTEN YOUR SENSES, WE
CREATED A FEW OF OUR OWN.

Avoiding an accident in the first place is always the safest route. With the available i-Activsense suite of safety features, sophisticated safety innovations alert you to hazards to help you avoid collisions or lessen their impact. These innovations help improve your visibility and awareness of the road and monitor the traffic conditions around you. When needed, they will even perform lane-keeping adjustments and automatic braking. i-Activsense creates a more confident driving experience so you can feel focused and engaged with every drive you take.

ADVANCED BLIND SPOT MONITORING (ABSM)[▲]

REAR CROSS TRAFFIC ALERT (RCTA)[▲]

LANE DEPARTURE WARNING SYSTEM (LDWS)[†]

LANE-KEEP ASSIST SYSTEM (LAS)[†]

ADAPTIVE FRONT-LIGHTING SYSTEM (AFS)^{*}

HIGH BEAM CONTROL SYSTEM (HBC)[†]

SMART CITY BRAKE SUPPORT (SCBS)

SMART BRAKE SUPPORT (SBS)[†]

PEDESTRIAN DETECTION[†]

**MAZDA RADAR CRUISE CONTROL WITH STOP & GO
FUNCTION (MRCC WITH STOP & GO)[†]**

TRAFFIC SIGN RECOGNITION SYSTEM (TSR)^{*‡}

^{*}Standard on the GT and Signature models.

[†]Available on the GX with i-Activsense Package (requires i-Activ AWD) and standard on the GS, GT and Signature models.

[▲]Always check your mirrors. Be aware of traffic around you.

[‡]TSR functionality may not be compatible with all regional road signs in Canada.

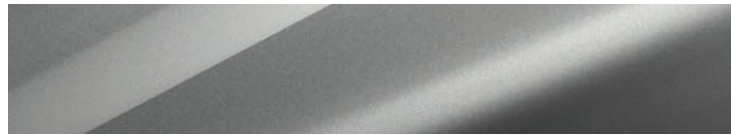
MAZDA CX-5 COLOURS



Jet Black Mica



Deep Crystal Blue Mica



Sonic Silver Metallic



Snowflake White Pearl



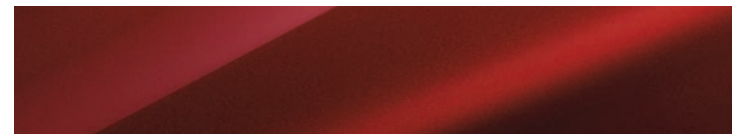
Titanium Flash Mica



Eternal Blue Mica



Machine Grey Metallic



Soul Red Crystal Metallic

MAZDA CX-5 UPHOLSTERY

Black Cloth (GX)



Black Leatherette with Grand Lux Suede® trim (GS)



Sand Leatherette with Grand Lux Suede® trim (GS)



Black Leather (GT)



Pure White Leather (GT)



Cocoa Nappa Leather (Signature)



MAZDA CX-5 WHEELS

17" alloy wheels (dark grey high-lustre metallic finish) (GX, GS)



19" alloy wheels (silver metallic finish) (GT)



19" alloy wheels (gunmetal finish) (Signature)



2019 MAZDA CX-5 MODEL LINE-UP AT A GLANCE*

	TRANSMISSION	DRIVE CONFIGURATION	ENGINE	DESCRIPTION
GX	SKYACTIV-Drive 6-speed automatic	Front Wheel Drive	SKYACTIV-G 2.5 I4 L	
	SKYACTIV-Drive 6-speed automatic	i-ACTIV AWD	SKYACTIV-G 2.5 I4 L	
	SKYACTIV-Drive 6-speed automatic	i-ACTIV AWD	SKYACTIV-G 2.5 I4 L	i-ACTIVSENSE Package
GS	SKYACTIV-Drive 6-speed automatic	Front Wheel Drive	SKYACTIV-G 2.5 L I4 CD	
	SKYACTIV-Drive 6-speed automatic	i-ACTIV AWD	SKYACTIV-G 2.5 L I4 CD	
	SKYACTIV-Drive 6-speed automatic	i-ACTIV AWD	SKYACTIV-G 2.5 L I4 CD	Comfort Package
GT	SKYACTIV-Drive 6-speed automatic	i-ACTIV AWD	SKYACTIV-G 2.5 L I4 CD	
	SKYACTIV-Drive 6-speed automatic	i-ACTIV AWD	SKYACTIV-G 2.5 L I4 T	
SIGNATURE	SKYACTIV-Drive 6-speed automatic	i-ACTIV AWD	SKYACTIV-G 2.5 L I4 T	

*For full details on the 2019 CX-5 model line-up, please visit mazda.ca or your local Mazda dealer.

CD = Cylinder Deactivation T = Dynamic Pressure Turbo (DPT)

MAZDA CX-5 GX

Includes the following features:

SKYACTIV-G 2.5
4-cylinder/in-line engine
Horsepower SAE net: 187 @ 6,000 rpm
Torque SAE net lb-ft: 186 @ 4,000 rpm
SKYACTIV-Drive 6-speed automatic transmission with manual-shift mode and Drive Selection switch
Front-wheel drive
G-Vectoring Control Plus (GVC Plus)
17" alloy wheels (dark grey high-lustre metallic)
225/65R17 all-season tires
Temporary spare tire
Tire Pressure Monitoring System (TPMS)
Dynamic Stability Control (DSC)
Traction Control System (TCS)
Hill Launch Assist (HLA)
Advanced Blind Spot Monitoring (ABSM)
Rear Cross Traffic Alert (RCTA)
Smart City Brake Support (SCBS)
Power-assisted 4-wheel disc brakes
Anti-lock Brake System (ABS) with Electronic Brake Force Distribution (EBFD)
Emergency Brake Assist (EBA)
Rack-and-pinion steering with rpm-sensing variable power assist
Independent MacPherson strut front suspension with coil springs and stabilizer bar
Independent multi-link rear suspension with coil springs and stabilizer bar
Telescopic, double-acting shock absorbers
Electronic Parking Brake (EPB) with auto-hold function
Dual front and side air bags and dual side air curtains
3-point seat belts for all seating positions
Height-adjustable front seat belts
Height-adjustable front and rear seat headrests
Driver's and front passenger's seat-belt pretensioners with force limiters
Integrated child-safety-seat lower anchors & upper tether anchors
Rearview camera (wide angle)
Engine immobilizer theft-deterrent system
Keyless entry
Push Button Start
Tilt and telescopic steering wheel
LED headlights
LED daytime running lights
Automatic on/off headlights
Noise-isolating windshield
Noise-isolating glass (driver's and front passenger's windows)
Body-coloured, power, heated door mirrors
Turn signal indicators on door mirrors
Manually foldable door mirrors
Body-coloured exterior door handles
Privacy glass on rear door glass, quarter glass and rear gate glass
Green tint glass with UV shield
Body-coloured rear roof spoiler
Mouldings for roof rack
Chrome tailpipe garnish
Day/night rearview mirror
Rain-sensing intermittent windshield wipers
Intermittent rear windshield wiper
Rear window defroster
Speed-sensing, double-action power door locks

Steering-wheel-mounted cruise controls
AM/FM/HD radio with four speakers
7" colour touchscreen display with MAZDA CONNECT
HMI Commander switch
Steering-wheel-mounted audio and Bluetooth® controls with Audio Profile
Navigation-ready (requires navigation SD card accessory)
Two USB ports and auxiliary audio input jack
Apple CarPlay™
Android Auto™
Integrated Aha™ Internet Radio functionality ¹
Integrated Stitcher™ Internet Radio functionality ¹
SMS text message audio delivery and reply ¹
Air conditioning with manual climate controls
Power windows with illuminated switches and driver's one-touch up and down feature
Cloth upholstery
6-way manually adjustable driver's seat
4-way manually adjustable passenger's seat
Heated front seats with three settings
40/20/40-split folding rear seat
Rear seat recline (manually adjustable)
Driver's and passenger's sunvisors with covered vanity mirrors
Tachometer
Trip Computer
Exterior temperature gauge
Warning lights for low fuel level, low windshield washer fluid, door ajar, check engine, oil pressure, parking brake, high beams and safety belts
Overhead console with sunglasses holder
Front centre console with armrest, cup holders and storage
Driver's and front passenger's seatback pockets
Illuminated entry
Internal hood and fuel door releases
Cargo area light
Three 12-volt DC power outlets
Custom-fitted floor mats with CX-5 embroidery

GX OPTIONS

i-ACTIV AWD

i-ACTIV AWD (all-wheel drive), and AWD badge on lift-gate

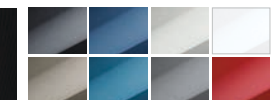
i-ACTIVSENSE Package (requires i-ACTIV AWD)

Mazda Radar Cruise Control with Stop & Go function (MRCC with Stop & Go function), Smart Brake Support (SBS), Pedestrian Detection (forward sensing), Distance Recognition Support System (DRSS), Forward Obstruction Warning (FOW), Lane Departure Warning System (LDWS), Lane-keep Assist System (LAS), High Beam Control system (HBC), and Colour Multi-Information Display (MID)

BLACK CLOTH



EXTERIOR COLOURS



MAZDA CX-5 GS

Includes GX FWD equipment plus:

SKYACTIV-G 2.5
4-cylinder/in-line engine with Cylinder Deactivation
Power lift-gate with programmable adjustable height
Leatherette-trimmed upholstery with Grand Lux Suede® trim
6-way power driver's seat with manual lumbar support
6-way manually adjustable front passenger's seat with manual seat height adjuster
Heated steering wheel
Leather-wrapped steering wheel
Leather-wrapped shift knob
Front wiper de-icer
Automatic headlight levelling
Auto-dimming rearview mirror
Driver's and passenger's cloth-wrapped sunvisors with illuminated, covered vanity mirrors and extensions
Rear centre armrest with integrated storage and cup holders
Cloth-wrapped A pillar with speaker
Six speakers
Two additional USB ports in rear armrest
Remote folding rear seats
Mazda Radar Cruise Control with Stop & Go function (MRCC with Stop & Go function)
Smart Brake Support (SBS)
Pedestrian Detection (forward sensing)
Distance Recognition Support System (DRSS)
Forward Obstruction Warning (FOW)
Lane Departure Warning System (LDWS)
Lane-keep Assist System (LAS)
High Beam Control system (HBC)
Colour Multi-Information Display (MID)

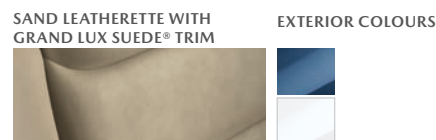
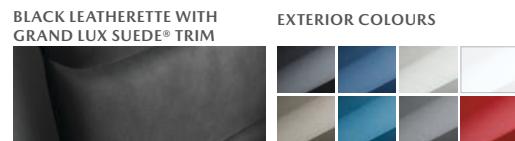
GS OPTIONS

i-ACTIV AWD

i-ACTIV AWD (all-wheel drive), and AWD badge on lift-gate

Comfort Package (requires i-ACTIV AWD)

Power glass moonroof with interior sunshade, tilt-up ventilation and one-touch open, automatic dual-zone climate controls, rear passenger air vents (back of the centre console), and advanced keyless entry (proximity entry and ignition)



MAZDA CX-5 GT

Includes GS equipment with i-ACTIV AWD and Comfort Package plus:

19" alloy wheels (silver metallic)
225/55R19 all-season tires
Windshield-projected Active Driving Display (ADD)
Traffic Sign Recognition System (TSR) ^{††}
Exterior B and C pillar garnish in piano black
Leather-trimmed upholstery
Ventilated front seats with three settings
Adjustable heated rear seats with three settings (outboard only)
Metal Wood painted dash strip panel
10-way power driver's seat with power lumbar support
Memory driver's seat with 2 memory settings
6-way power passenger's seat
10-speaker premium Bose® sound system with AM/FM/HD radio
Centerpoint® 2 Surround Technology and AudioPilot® 2 Noise Compensation Technology, including 7 channels of customized equalization and SurroundStage® Signal Processing
Cloth-wrapped A pillar with premium Bose® speaker
Navigation system
SiriusXM® Satellite Radio (<i>includes complimentary 3-month subscription</i>)
SiriusXM Traffic Plus and Travel Link services (<i>includes complimentary 5-year subscription</i>) (<i>current information for: traffic, weather, sport scores and fuel prices</i>)
LED front and rear signature lighting
Adaptive Front-lighting System (AFS)
LED rear combination lights
LED fog lights
HomeLink® wireless control system
Power folding door mirrors
Front centre console with premium stitching, armrest, cup holders and storage
Satin-chrome front console knee pad
Lined glove box

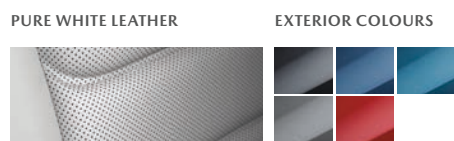
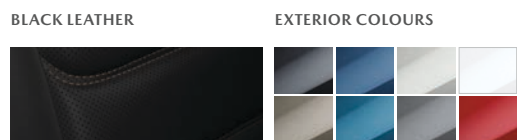
GT OPTIONS

SKYACTIV-G 2.5 T with Dynamic Pressure Turbo (DPT)

4-cylinder/in-line engine

Horsepower SAE net: 250 @ 5,000 rpm (with 93 octane fuel)/227 @ 5,000 rpm (with 87 octane fuel)

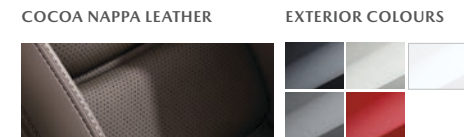
Torque SAE net lb-ft: 310 @ 2,000 rpm



MAZDA CX-5 SIGNATURE

Includes GT equipment and SKYACTIV-G 2.5 T with Dynamic Pressure Turbo (DPT) engine plus:

19" alloy wheels (gunmetal)	Abachi wood-trimmed decorative dash panel
225/55R19 all-season tires	Abachi wood-trimmed front and rear door panels
Frameless rearview mirror	Black interior roof lining
Meter set with 7" LCD display	Satin chrome-plated power seat switches
Satin chrome-plated glovebox lever	LED front and rear room lamps
LED illuminated glovebox	LED cargo area light
Nappa leather-trimmed upholstery	LED overhead console light
Premium cross-stitching detail on steering wheel	LED vanity mirror illumination



MAZDA CX-5 SPECIFICATIONS & CAPACITIES

	ENGINE	GX	GS/GT	GT (optional)/SIGNATURE
	Engine type	SKYACTIV-G 2.5	SKYACTIV-G 2.5 with Cylinder Deactivation	SKYACTIV-G 2.5 T with Dynamic Pressure Turbo (DPT)
	Valve train	DOHC 16-valve	DOHC 16-valve	DOHC 16-valve
	Number of cylinders/configuration	4/in-line	4/in-line	4/in-line
	Displacement	2,488 cc	2,488 cc	2,488 cc
	Compression ratio	13.0:1	13.0:1	10:5:1
	Horsepower SAE net	187 @ 6,000 rpm	187 @ 6,000 rpm	250 @ 5,000 rpm (with 93 octane fuel)/227 @ 5,000 rpm (with 87 octane fuel)
	Torque SAE net lb. ft.	186 @ 4,000 rpm	186 @ 4,000 rpm	310 @ 2,000 rpm
	Fuel system	Direct Injection	Direct Injection	Direct Injection
	Recommended fuel	Regular	Regular	Regular
	Curb weight (kg)			
	6AT FWD	1,524	1,571	–
	6AT AWD	1,602	1,643	1,734
	Turning circle, curb-to-curb (m)	11	11	11

INTERIOR DIMENSIONS

Headroom (fr/rr) without moonroof (mm)	1,009/991
Headroom (fr/rr) with moonroof (mm)	999/991
Legroom (fr/rr) (mm)	1,041/1,007
Shoulder room (fr/rr) (mm)	1,451/1,392
Hiproom (fr/rr) (mm)	1,402/1,405
Cargo length (mm)	966 (rear seat to tailgate)
Cargo width (mm)	1,448/1,050 (between rear tires)
Rear lift-gate opening height (mm)	779
Rear lift-gate opening width (mm)	1,125

EXTERIOR DIMENSIONS

Wheelbase (mm)	2,698
Track (fr/rr) (mm)	1,596/1,596
Overall length (mm)	4,550 (with licence plate holder)
Overall width (mm)	1,842/2,115 (mirror to mirror)
Overall height (mm)	1,681 FWD with antenna/1,680 (AWD with antenna)
Ground clearance (mm)	192 unladen (FWD)/190 unladen (FWD/AWD, 2.5 L engine with Cylinder Deactivation)/190 unladen (AWD, 2.5 T Turbo engine)

FUEL ECONOMY	SKYACTIV-G 2.5		SKYACTIV-G 2.5 with Cylinder Deactivation		SKYACTIV-G 2.5 T
	FWD	AWD	FWD	AWD	AWD
city/highway (L/100 km)*	9.7/7.8	10.2/8.2	9.3/7.6	9.8/7.9	10.8/8.7

*Estimated fuel economy based on Government of Canada's approved, revised 5-cycle testing method. Your actual fuel consumption may vary depending on how, where and when you drive. For comparison purposes only. For more information on revised 5-cycle testing, visit mazda.ca/5cycle.

	CAPACITIES	
	Seating	5
Cargo volume behind 2nd row seats (L)	875	
Cargo volume with rear seats folded (L)	1,687	
Fuel tank (L)	56 L (FWD)/58 L (AWD)	
Towing Capacity	907 kg (2,000 lbs)	

[†]Aha, Stitcher and SMS text functionality are a part of MAZDA CONNECT and are only compatible with certain devices.

^{††}TSR functionality may not be compatible with all regional road signs in Canada.

® Bluetooth is a registered trademark of Bluetooth SIG, Inc.

® Grand Lux Suede is a registered trademark of Seiren Co., Ltd.

® Bose ® Centerpoint and ® AudioPilot are registered trademarks of Bose Corporation.

® HomeLink and the HomeLink house are registered trademarks of Johnson Controls, Inc.

[™]Aha is a registered trademark of Harman International Industries, Inc.

[™]Stitcher is a registered trademark of Stitcher.

“SiriusXM”, “SiriusXM Satellite Radio”, “XM”, “Sirius”, the SiriusXM logo, channel names and logos are trademarks and copyrights of Sirius XM Radio Inc. and are used under license.

Apple, iPad, iPhone, iPod, and iPod touch are trademarks of Apple Inc., registered in the U.S. and other countries. Apple CarPlay is a trademark of Apple Inc.

Android Auto is a trademark of Google LLC.

MAZDA CX-5 ACCESSORIES. DESIGNED TO COMPLEMENT YOUR MAZDA CX-5. AND YOU.

Mazda has created thoughtfully designed accessories that perform seamlessly with your Mazda CX-5. When installed by your Mazda Dealer, Genuine Mazda Accessories carry the same New Vehicle Limited Warranty as your new Mazda. For a full list of Genuine Mazda Accessories for your CX-5, please visit mazda.ca.



Vehicle hitch and accessory carriers may not be exactly as shown and are not included. Bike, snowboard, skis and accessories not included. Please remember to properly secure all cargo.

MAZDA UNLIMITED: DESIGNED TO BE DRIVEN.

3-YEAR NEW VEHICLE UNLIMITED MILEAGE WARRANTY	3-YEAR ROADSIDE ASSISTANCE UNLIMITED MILEAGE	5-YEAR POWERTRAIN UNLIMITED MILEAGE WARRANTY	7-YEAR ANTI-PERFORATION UNLIMITED MILEAGE WARRANTY
---	--	--	--

WHAT DOES MAZDA UNLIMITED MEAN FOR YOU?

- Confidence in the quality of the vehicle you are driving
- Assurance in knowing Mazda will be there, kilometre after kilometre
- Knowledge that if you ever sell, trade or upgrade to a new vehicle during the warranty period, Mazda Unlimited will be transferable to the new owner
- Peace of mind, knowing that there are no limits to how far you can drive

MAZDA
UNLIMITED
MILEAGE WARRANTY
STANDARD ON ALL NEW MODELS.

mazdaunlimited.ca

WE'RE MORE THAN A DEALERSHIP. WE'RE A CLUBHOUSE.

We're the clubhouse where Mazda enthusiasts unite. Where a passion for driving meets vehicles made for driving.

Where every Mazda dealership team knows that passion inside and out.

From that first initiation rite of a soul-rousing test drive, to every drive you take and every customer service visit you make.

WELCOME TO THE CLUBHOUSE
OF DRIVING PASSION.

FINANCING WITHOUT THE FUSS

Whether you're buying or leasing a new Mazda, or a used vehicle, Mazda Financial Services can help make the financing process more convenient and satisfying. Mazda Financial Services is known for first-class customer service, a wide range of financing options and highly competitive rates. To find out which purchase or lease plan is right for you, talk with your Mazda Dealer or visit mazda.ca.

MAZDA MOBILITY ASSISTANCE PROGRAM

Mazda Canada believes that vehicle access is vital for everyone. Under this program, physically challenged customers who purchase or lease a new, unused Mazda vehicle may be eligible to receive assistance from Mazda Canada Inc. to aid with the cost of acquiring and installing adaptive driving aids on their vehicle. For complete details on this program, see your Mazda Dealer.

READY TO ROLL

Our pre-delivery commitment means every new Mazda is inspected, gassed up and fitted with floor mats.

ADDED PROTECTION

For peace-of-mind motoring, we've created Mazda Added Protection Plan (M.A.P.) extended warranty plans. M.A.P. plans complement your Mazda Limited Warranty and protect you from unexpected repair expenses and the rising cost of repairs. All M.A.P. plans include Personal Budget and Repair Inflation Protection. In addition, all M.A.P. plans include Premium Roadside Assistance, Tire Road Hazard coverage and OEM Collision Part Coverage. Premium Roadside Assistance extends the roadside assistance coverage offered during the new-vehicle limited-warranty period throughout the M.A.P. term. The Premium Roadside Assistance offers Towing, Winching, Battery Boost, Out-of-Fuel Coverage, Tire Service, Lockout Service, Emergency Travel Expense Reimbursement and Travel Planning and Dealer Locator. Should you ever decide to sell your Mazda vehicle, M.A.P. is transferable to future owners and will enhance the resale value of your vehicle. The Mazda Added Protection Plan is fully backed and administered by Mazda Canada Inc. For more information, please contact your Mazda Dealer.

MAZDA ROADSIDE ASSISTANCE PROGRAM

As part of our commitment to your total satisfaction, 2019 CX-5 owners are automatically enrolled in our Roadside Assistance Program. Roadside Assistance protects your CX-5 for the duration of the 3-year basic limited warranty. Should you require assistance during this period, our service will help to get your vehicle back on the road and minimize any inconvenience. For complete details on this program, see your Mazda Dealer or visit mazda.ca.

MAZDA TEST-DRIVE EXPERIENCE

Exhilaration begins with the Mazda Test-Drive Experience – a uniquely designed road trip engineered to take you miles beyond the ordinary test-drive. Down local streets, on-ramps, highways and off-ramps. Through straightaways, S-curves and corners. It's all about putting a Mazda to the test under real-world conditions. It's about discovering the superb acceleration, braking, steering, handling and ride quality that every Mazda offers. And rediscovering that fun, connected-to-the-road feeling we call Zoom-Zoom.

GRADUATE PROGRAM

Ask your dealer about Mazda's competitive program for recent university and college graduates.

Product changes and options availability: Following publication of this brochure, certain changes in equipment, options, specifications, prices and other information may have occurred which would not be reflected in these pages. All information included in this brochure is based upon the available information at the time of publication. Although such information is believed to be correct at the time of publication, accuracy cannot be guaranteed. Your Mazda Dealer is your best source for up-to-date information. Mazda reserves the right, at any time without providing any further notice or incurring any obligations, to correct any errors, inaccuracies or omissions that may exist in this brochure, as well as to make changes to any of the information included in this brochure. Options and accessories shown or described in this brochure are available at extra cost and may be offered only in combination with other options or subject to additional ordering requirements or limitations. Some vehicles shown may be models from other jurisdictions. Canadian models and specifications may vary.



Feel Alive

Thank you for considering a Mazda.

As you can see from the stories in this brochure, everyone at Mazda is deeply passionate about creating cars that provide a memorable driving experience. This passion all starts with you. Before the first sketch of a Mazda, before any new idea is conceived, we consider you, the driver, first. All with the hope that you will feel our passion for driving once you're behind the wheel.

Because we believe that vehicles should move your body as well as your soul, we love sharing the beautiful machines we make and building relationships with the people who drive them. When you drive a Mazda, you're a part of The Clubhouse of Driving Passion, where driving is celebrated in its purest form.

If you haven't already experienced the excitement of driving a Mazda for yourself, schedule a test drive at your local Mazda Clubhouse. Together, we will ensure that a great test drive is just the first step in the joy of owning a Mazda.

Sincerely,

Massey Kondo
President and CEO
Mazda Canada Inc.



Feel Alive

EST. 1920 HIROSHIMA, JAPAN