

# AMC

81

# Spirit · Concord



# Spirit

The Spirit liftback has a convenient rear hatch that opens into a roomy compartment handling surprisingly large loads. Passenger seating is functional, comfortable and luxurious. You can avail yourself of extra Spirit excitement with the liftback G.T. package: special blackout accents, spoke-styled wheels and glass-belted radials outside; a tachometer and sport steering wheel inside.

## Prestige that lasts in a personal-size automobile

The new Spirits are U.S.-built for those desiring a prestige subcompact car that gives excellent fuel economy, sporty appearance and durable construction.

The new sedan's elegant practicality is ideal for families and single persons alike. A folding rear seat affords extra space for stowing cargo. As with all Spirit models, you enjoy a smooth stable ride due to a wide wheel track and long wheelbase.

All the new Spirits give you fresh styling features, too, with new grille and rally stripe designs. Durable construction is evident in value features such as Ziebart® Factory Rust Protection with galvanized steel on the inside of all exterior body panels.

For highway driving, Spirit's fuel efficiency coupled with the large fuel tank of 79.5 litres will give you exceptional distance cruising capability. A responsive 2.5 litre 4-cylinder engine and 4-speed manual transmission are standard. For optional power, you may choose the improved 4.2 litre 6-cylinder engine and convenient 3-speed automatic transmission.





Choose a Spirit for its substance or its style, and get a full measure of both. Spirit interiors, in particular, are better equipped and appointed than those in many other small cars. Driver and passenger comfort are assured with standard custom bucket seats in Deluxe Grain vinyl and carpeting throughout. Available colors include: black, blue and beige.



Select the Spirit model and relax in the luxury of custom reclining bucket seats in Deluxe Grain vinyl, custom door trim panels, electronic quartz digital clock and a lot more at no extra cost. Available interior colors: black, blue, beige and nutmeg.



For elegant handling, choose Spirit's new optional leather-covered sport steering wheel, functional gauge package, floor-shift console and air conditioning.

If your preference is fabric, choose the reclining bucket seats in Coventry Check. Colors include black, blue, beige and nutmeg.



# CONCORD

## All the luxury you expect in a contemporary U.S.-built automobile

More than ever, the new Concords are an American Motors success story. They're built to meet the world's standards for exceptional luxury and handling ease and for lasting fuel-efficient operation.

The new Concord 2-door sedan is an affordable automobile that never stints on

interior and passenger comfort. The roomy Concord 4-door sedan model blends practical size with elegant styling, while offering remarkable interior room and appointments.

The new Concord wagon is efficiently designed for maximum space to accommodate cargo and passengers. Yet, there's no sacrifice in luxury and attractive appearance. To pack up your belongings into a spacious 1.71 cubic meters of stowage area, just lower the fold-down rear seat. There is also an extra compartment for hiding away valuables.

You can avail yourself of a higher standard of luxury by selecting the Limited model, featuring a new distinctive opera window treatment, new wire wheel covers, plush interior and elegant appointments throughout the car.

As with all AMC cars, the Concords earn top honors for fuel efficiency and cruising capability. The standard powertrain is the 2.5 litre 4-cylinder engine and 4-speed manual transmission. The 83.3 litre fuel tank lets you go long distances between petrol stops. Optional power includes the improved 4.2 litre 6-cylinder engine and 3-speed automatic transmission.



The true sense of family-sized luxury and convenience are revealed in the tastefully appointed Concord interiors. The high quality of interior trim is evident everywhere . . . in the handsome door panels, in the deep-pile, color-keyed carpeting, in the comfortable contoured seating. A long list of interior options is available to raise the level of luxury even higher.

Individual sculptured Rochelle Velour fabric seats are an elegant option on DL models. Five color choices include black, blue, wine, beige and nutmeg.

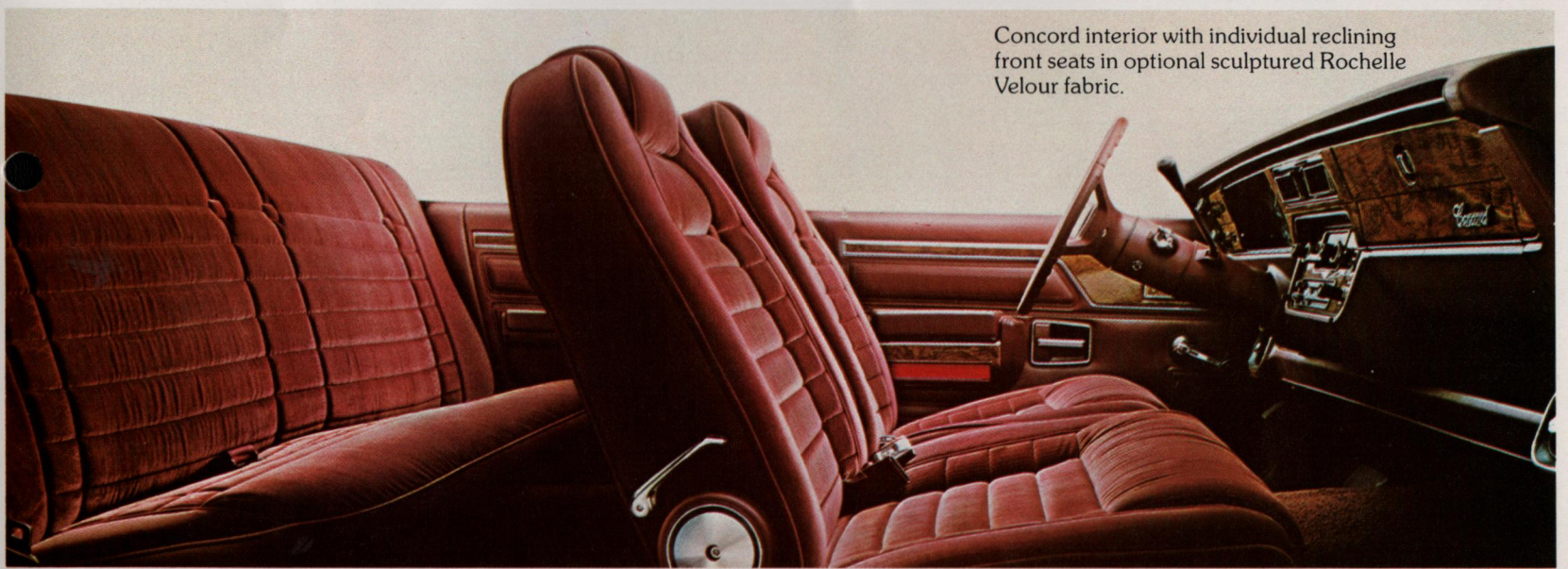
The standard Concord instrument panel features woodgrain accents, custom steering wheel with woodgrain horn cover.



Concord's optional Limited model comes with individual reclining, genuine leather seats in nutmeg, plus deluxe carpeting, luxury woodgrain steering wheel and more.



Color-keyed carpeting and lockable stowage compartment enhance the utility of the 1.71-cubic-meter cargo area (with rear seat folded down) in Concord wagons.



Concord interior with individual reclining front seats in optional sculptured Rochelle Velour fabric.



# Spirit·Concord Options

Some options listed are standard on DL or Limited models or are included in select packages.

## Power

- Power steering
- Power front disc brakes
- Power lift side windows
- Power door locks
- Six-way power driver's seat (Concord)
- Six-way power driver's and passenger's seats (Concord)
- Power decklid release (Concord sedans)
- Power liftback release (Spirit liftback)

## Audio

- AM radio (Std. with Spirit)
- AM/FM stereo radio
- AM/FM cassette stereo radio
- AM/FM/CB stereo radio
- Premium audio system
- Power antenna

## Convenience

- Air conditioning system (includes heavy duty cooling system, heavy duty alternator and parcel shelf)
- Air conditioning package (includes air conditioning system as above plus power steering and tinted glass)

- Light group (includes dome/map light, two courtesy lights, glove box light, engine compartment light, rear door dome light switches, trunk light on sedans and liftgate dome light switch on liftbacks and wagons)
- Convenience group (includes lighted passenger visor mirror, lights-on buzzer and intermittent windshield wipers)
- Gauge package (includes tachometer, clock, ammeter, oil and vacuum pressure gauges) (Spirit)
- Tinted glass
- Rear window defogger
- Rear window wiper and washer (liftback and wagon models)
- Pop-up sun roof
- Cruise control (automatic transmission only)
- Tilt steering wheel
- Roof rack (Spirit Sedan and Concord Wagon)
- Tailgate air deflector (Spirit Sedan)
- Full-length console with armrest (Spirit)
- Halogen headlamps
- Parcel shelf
- Remote control outside sport mirrors (Spirit)

- Electric control outside chrome mirrors

## Appearance

- Spirit G.T. Package includes the following equipment:

**Interior** — color-keyed sport steering wheel

**Exterior** — spoke styled wheels; black dual remote sport mirrors; black bumpers with nerf strips and guards; blackout exterior accents on grille, trim moldings, venturi area and taillamps; dual black paint stripes (color-keyed with black exterior paint); G.T. medallions

- Two-tone paint
- Rally stripes (Spirit)
- Rear spoiler (with Spirit G.T. package only)
- Luxury woodgrain steering wheel
- Leather wrapped sport steering wheel
- Vinyl sport steering wheel (Spirit)

## Wheel Trim

- Wire steel covers
- Spoke style wheels
- Turbocast II aluminum wheels

## Protection

- Protection group (includes bumper nerf strips and guards, door edge guards and floor mats)
- Locking gas cap
- Bodyside scuff moldings (Spirit)
- Retractable cargo area cover (Concord wagon)

## Heavy Duty

- Handling package (includes unique front and rear sway bars)
- Heavy duty shock absorbers
- Automatic load leveling air shocks (Concord)
- G.T. rally tuned suspension (Spirit liftback only; includes uniquely tuned front sway bar, rear sway bar, heavy duty adjustable Gabriel Strider shock absorbers, tuned strut rod bushings, tuned rear spring i clamp pads, hi-control rear leaf springs and unique steering gear)
- Light duty trailer towing package (Concord only; includes bumper-mounted hitch, 5-connector wiring harness and vehicle to trailer wiring kit. For trailers up to 900 kg)
- Twin Grip differential

# Spirit·Concord Standard Features

Spirit and Concord base models offer the following standard equipment:

## Functional

- 2.5 Litre, 4-cylinder engine
- 4-speed manual transmission
- Manual front disc brakes
- P185/75R14 radial WSW tires (Spirit)
- P195/75R14 radial WSW tires (Concord)
- 79.5 litre fuel tank (Spirit)
- 83.3 litre fuel tank (Concord)
- Front stabilizer bar
- High level ventilation
- Heater/defroster system
- High-pressure compact spare tire
- Extra-quiet insulation
- Dual horns
- 2-speed electric wipers and washers
- AM radio (Spirit)

## Exterior

- Full styled wheel covers
- Dual bodyside pinstripes
- Bright exterior moldings including: rocker, drip, wheel lip, windshield surround
- Bodyside scuff moldings (Concord)
- Dual remote control chrome mirrors
- Quad rectangular headlamps
- Vinyl roof with opera windows (Concord sedans)
- Woodgrain side panels (Concord wagon)
- Deluxe exterior moldings
- Bumper guards — front and rear
- Liftgate accent stripes (Concord wagon)
- 'B' pillar accent stripes (Concord 4-door sedan)
- DL exterior identification

## Interior

- Reclining bucket seats in deluxe grain vinyl (Spirit)
- Individual reclining seats in Deluxe Grain vinyl (Concord)
- Split folding rear seat (Spirit)
- Premium door trim panels with woodgrain accents
- Color-keyed carpeting in passenger area
- Cargo area carpeting (Spirit liftback and sedan; Concord wagon)
- Custom steering wheel with woodgrain accents
- Woodgrain instrument panel overlay
- Quartz digital clock
- Inside hood release
- Glove box lock
- Lighted ashtray — front
- 25.4 cm day/night mirror
- Rear seat ashtrays (Concord)
- Cargo skid strips (Concord wagon)
- Trunk carpeting (Concord sedans)
- Cigarette lighter
- Dome light
- Parking brake warning light
- Key warning buzzer (Spirit)
- Lockable cargo compartment (Concord wagon)
- Fold down rear seat (Spirit liftback and sedan; Concord wagon)

Concord Limited models offer the following standard equipment in addition to or in place of Concord DL model equipment:

## Convenience

- Power steering
- Power front disc brakes
- Power door locks
- Power deck lid release (sedans)
- AM/FM stereo radio
- Air conditioning
- Tilt steering wheel
- Convenience group
- Light group

## Exterior

- Wire wheel covers
- "Limited" exterior identification
- Protection group
- Bright door frame accent moldings
- Roof rack (wagon)

## Interior

- Individual reclining seats in Chelsea leather
- Premium door panels with "Limited" identification
- Luxury woodgrain steering wheel
- Deluxe carpeting in passenger area
- Under dash parcel shelf
- Tinted glass

- Cold climate group (includes engine block heater, heavy duty battery and coolant protection)
- 4-cylinder heavy duty cooling system (includes heavy duty radiator and viscous drive fan)
- 6-cylinder heavy duty cooling system (includes heavy duty radiator, viscous drive fan, fan shroud and coolant recovery system)

### Tires

- P195/75R14 fiberglass radial BSW (Spirit)
- P195/75R14 fiberglass radial WSW
- P195/75R14 Arriva steel radial WSW
- P195/70R14 Wing Foot Flexten radial RWL

- A Premium audio system
- B AM/FM cassette stereo radio
- C Lighted passenger visor mirror
- D Cruise control
- E Pop-up sun roof
- F Tilt steering wheel
- G Six-way power driver's seat
- H Power lift side windows
- I Rear window wiper and washer
- J Power antenna
- K Retractable cargo area cover



### DIMENSIONS/CAPACITIES

	Spirit		Concord		
	liftback	sedan	4-door	2-door	wagon
<b>EXTERIOR (cm)</b>					
Wheelbase	244	244	274	274	274
Overall Length	425	424	470	470	470
Overall Width	183	183	180	180	180
Overall Height	131	131	130	132	134
Front Overhang	90	90	90	90	90
Front Track	148	148	146	146	146
Rear Track	145	145	145	145	145
<b>INTERIOR (cm)</b>					
Front Leg Room	104	104	104	104	104
Front Head Room	97	97	97	97	97
Front Shoulder Room	137	137	137	137	137
Front Hip Room	138	138	138	138	138
Rear Leg Room	67	65	92	92	92
Rear Head Room	90	96	95	95	96
Rear Shoulder Room	135	135	136	135	136
Rear Hip Room	102	110	136	133	136
Cargo Index Volumes (m <sup>3</sup> )	765	.819	.342	.342	1.71
Cargo Lifterover Height @ Design Weight	73	76	69	71	68
<b>Fuel Capacity (litres)</b>					
4-Cylinder	79.5	79.5	83.3	83.3	83.3
6-Cylinder	79.5	79.5	83.3	83.3	83.3
Curb Weight (kg)	1199	1179	1270	1240	1283

NOTE: .114 cubic meters of hidden cargo volume on Concord Wagons.

### ENGINE/TRANSMISSION/AXLE AVAILABILITY

Engine/ Transmission	Worldwide (Except U.S. Possessions	U.S. Possessions Only
	Axle Ratios	
<b>SPIRIT</b>		
2.5 Litre (151 CID) 2V 4-Cylinder		
4-Speed Man. Floor	3.08 S	3.08 S
3-Speed Auto. Column	—	3.08
3-Speed Auto. Floor	—	3.08
4.2 Litre (258 CID) 2V 6-Cylinder		
4-Speed Man. Floor	—	2.53
3-Speed Auto. Column	2.53	2.73
3-Speed Auto. Floor	2.53	2.73
<b>CONCORD</b>		
<b>2.5 Litre (151 CID) 2V 4-Cylinder</b>		
4-Speed Floor	3.08 S	3.08 S
3-Speed Auto. Column	—	3.08
<b>4.2 Litre (258 CID) 2V 6-Cylinder</b>		
4-Speed Floor	—	2.37
3-Speed Auto. Column	2.73	2.53

S — Standard engine/transmission/axle combination

# Colors

0115



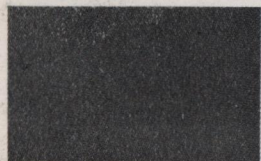
Olympic White



Classic Black



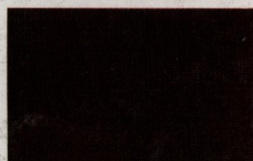
Quick Silver, Met.



Steel Gray, Met.



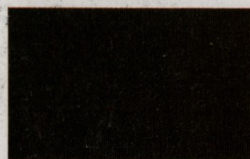
Med. Blue, Met.



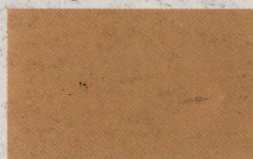
Moonlight Blue



Autumn Gold



Sherwood Green, Met.



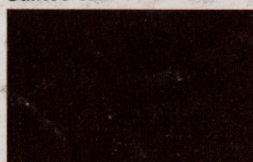
Cameo Tan



Copper Brown, Met.



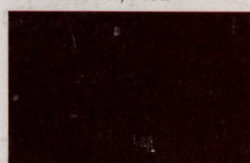
Med. Brown, Met.



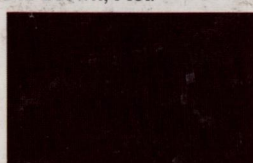
Dk. Brown, Met.



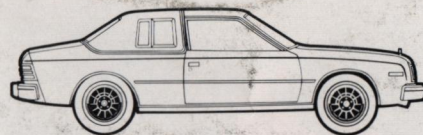
Oriental Red



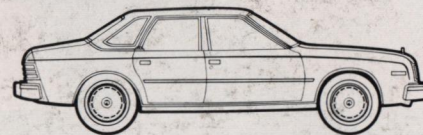
Vintage Red, Met.



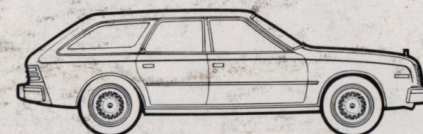
Deep Maroon, Met.



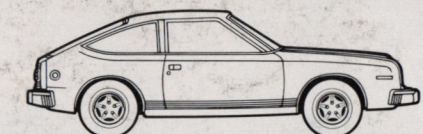
Concord 2-door sedan



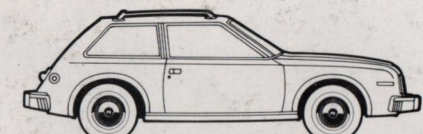
Concord 4-door sedan



Concord wagon



Spirit liftback

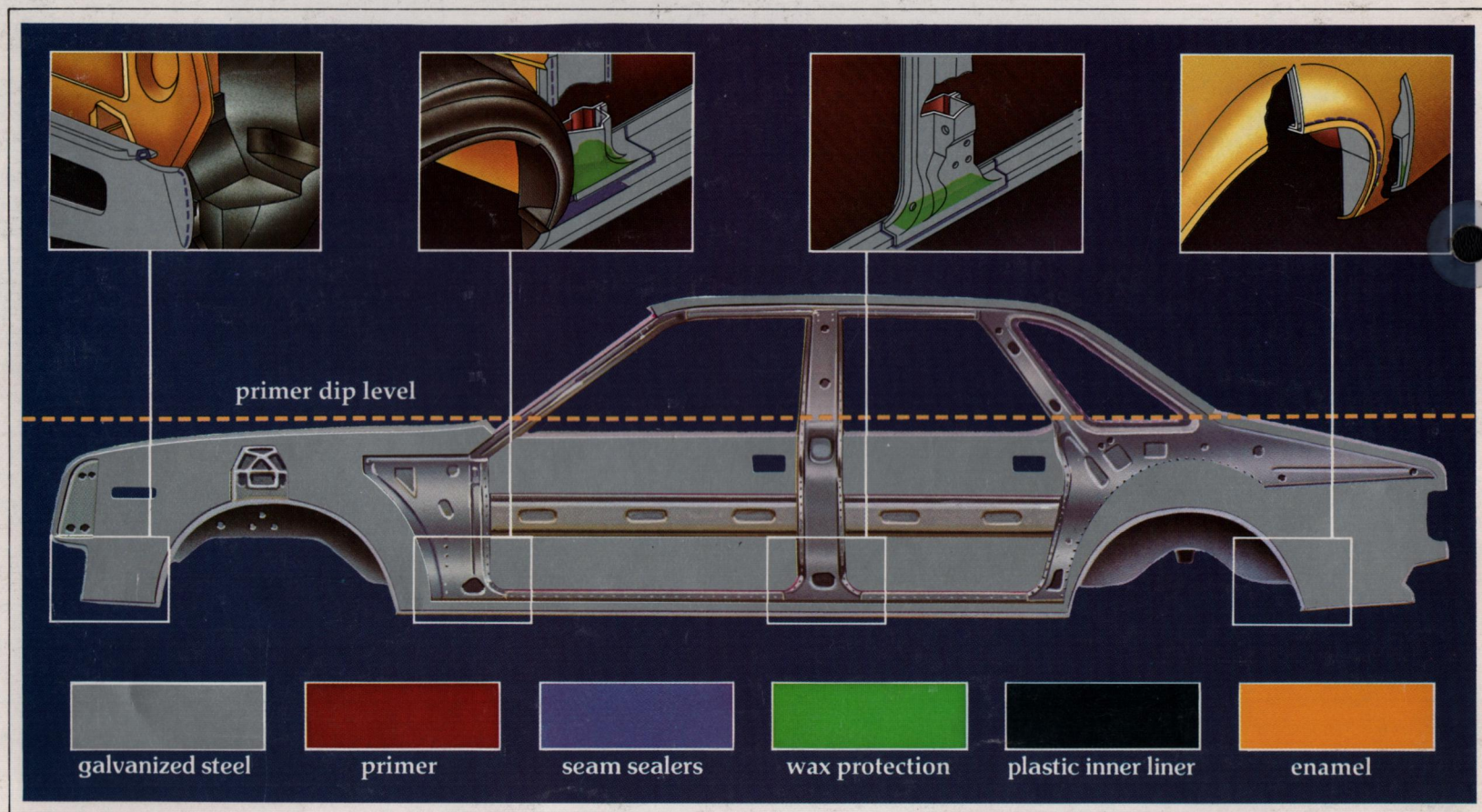


Spirit sedan

This brochure does not constitute an offer or commitment to sell. In order that product improvements may be made at any time, specifications and other data are subject to change without notice. Some of the models shown and described in this brochure have optional equipment, available at extra cost. See your authorized AMC dealer for prices and model availability for this optional equipment. In order to conform to local regulations, your Spirit or Concord may differ slightly from those shown in this brochure.

AMC, Spirit and Concord are trademarks of American Motors Corporation. American Motors Corporation, 27777 Franklin Rd., Southfield, Michigan 48034 U.S.A.

Telex No. 023-1255. Cable Code AMCENTRINT



**American Motors**