

GMC PRODUCT GUIDE

2001

**THE GUIDE TO
PROFESSIONAL GRADE
TRUCKS**

2001

GMC

PRODUCT
GUIDE

GMC PRODUCT GUIDE

Reputations are not born overnight—they are justly earned as people measure expectations against experience. Over the course of nearly a century, GMC vehicles have earned a reputation as professional grade vehicles that serious truck owners recognize as, quite simply, the right tools for the job. During that time, GMC has created a wide range of models, each with a unique design satisfying a variety of requirements. And that means whether you're looking for a pickup, sport utility or van, you can be sure there's a GMC with exactly the right combination of power, comfort and handling you're looking for.

CONTENTS

2 YUKON

4 YUKON DENALI

6 JIMMY

8 ENVOY

10 SAVANA


12 SAFARI

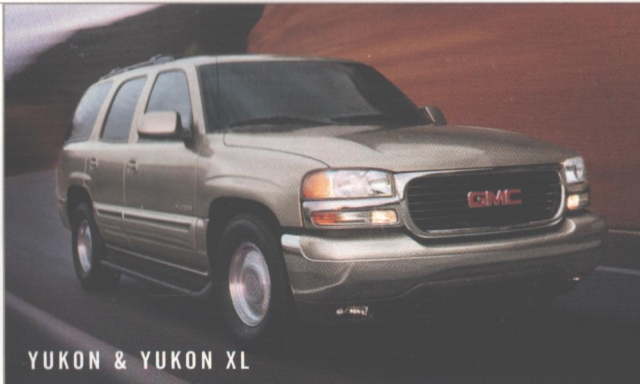
14 SONOMA

16 SIERRA

19 ENGINES

21 COMMITMENT PLUS

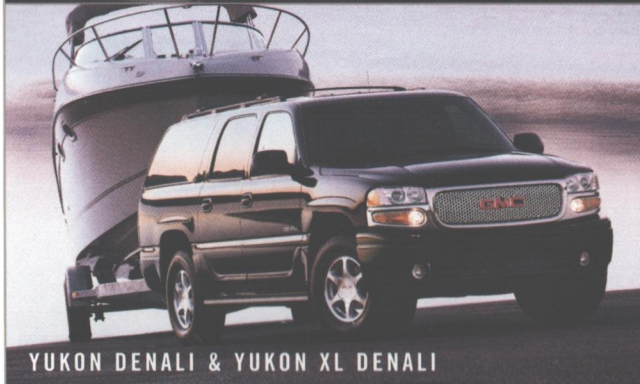
FOR MORE INFORMATION ON THE ENTIRE LINE OF
GMC TRUCKS, SUVS AND VANS, INCLUDING SPECI-
FICATIONS AND COMPETITIVE COMPARISONS,
VISIT gmc.com 



YUKON & YUKON XL



SIERRA



YUKON DENALI & YUKON XL DENALI



SONOMA



JIMMY



SAVANA



ENVOY



SAFARI

For 2001, GMC offers a variety of all-new vehicles. The Sierra line of trucks includes a number of all-new heavy-duty 3/4 and 1-ton pickups with engines more powerful than ever. With a blend of advanced technology and extraordinary amenities, the all-new Yukon Denali and Yukon XL Denali provide the ultimate combination of agility and refinement. The all-new Envoy offers unexpected comfort, thanks to its smooth ride and handling and silky-smooth engine performance. The rest of the lineup has a host of significant refinements—ranging from a new Crew Cab design for Sonoma to a powerful new Vortec™ 8100 V8 engine for the 3/4-ton Yukon XL.

TECHNOLOGY DEDICATED TO CONTROL YUKON AND YUKON XL

From their smooth ride to their exceptional towing capabilities, the Yukon and Yukon XL are designed to offer performance beyond your needs. They're also designed to provide something you may not have thought possible in a full-size SUV—surprisingly agile handling. Credit for that agility goes to a variety of professional grade features: torsion bar front suspension, five-link coil-spring rear suspension¹ and self-leveling shocks. For 2001, 3/4-ton Yukon XL models are available with a new, incredibly powerful Vortec 8100 engine. And, with available features ranging from Autoride™ real-time shock damping to a sunroof, you can choose the right options to meet your needs.

¹Half-ton models only.



Towing A heavy-duty trailering package, standard with Yukon XL (shown) and optional with Yukon, contributes to both vehicles' impressive towing capabilities.



Seating Both the Yukon and Yukon XL offer a wide variety of available seating configurations, with seating for up to nine.



Rear Doors A low cargo floor height combined with available cargo doors (shown) make loading easy. A lightweight aluminum liftgate with liftglass is standard.



Yukon 4WD SLT

in Polo Green Metallic, shown with available equipment.

YUKON & YUKON XL

AGILE. REFINED. RESPONSIVE.

THE ALL-NEW YUKON DENALI AND YUKON XL DENALI

What gives a full-size SUV the ultimate combination of agility and refinement? How about a powerful 320 hp Vortec 6000 V8 engine that gives you the ability to cut through traffic with confidence. Full-time all-wheel drive (AWD) that helps you maintain traction over all kinds of road conditions. Seventeen-inch wheels and Michelin® Cross Terrain tires to help convey power to the road. And interior amenities that range from refined tone-on-tone, leather-trimmed seats to a Bose® Acoustimass™ 11-speaker audio system with in-dash CD changer. The all-new Yukon Denali and Yukon XL Denali offer each one of these features—and more—making them the ultimate combination of agility and refinement.



YUKON DENALI



The Definition of Refinement Tone-on-tone leather seating trim and one-piece, 3rd-row seating in Yukon XL Denali (3rd-row 50/50 split-bench in Yukon Denali) are standard.



All-Wheel Drive Standard full-time all-wheel drive — an exclusive among full-size SUVs — provides impressive traction control everywhere, from patches of gravel to wet roads.



Driver Information Center At the top of the console, fingertip controls let you personalize a remarkable variety of functions, including the lighting, alarm and door locking systems.



Yukon XL Denali
in Onyx Black, shown with available equipment.

YUKON DENALI & YUKON XL DENALI



Jimmy 4WD SLT
in Indigo Blue over Pewter, shown with available equipment.

JIMMY

COMFORT BEYOND YOUR EXPECTATIONS

THE ALL-NEW 2002 ENVOY

Prepare yourself for a surprise. The 2002¹ Envoy not only provides you with the capabilities you demand in an SUV, it offers unexpected — and extraordinary — comfort. Its remarkably smooth ride, well-designed seats, expansive passenger and cargo room and quiet interior work in concert to cradle you — literally and figuratively — in comfort. The next-generation Envoy also has an all-new Vortec 4200 inline six that provides you with more horsepower than most competitors' V8s, yet maintains the fuel efficiency comparable to a V6. Perhaps most impressive, the engine combines power with an exceptionally smooth and quiet operation, enhancing your comfort around town and on the open highway.



¹ Scheduled for availability Spring 2001. ² Excludes other GM vehicles.



Spaciousness Means Comfort Envoy's exceptionally spacious interior offers more head- and legroom than any other vehicle in its class.²



Abundant Cargo Space The split second-row seat easily folds down to carry extra-large items. Five standard cargo tie-downs let you keep everything secure.



Amenities A wealth of available features — from an easy-to-use, in-dash, 6-disc CD changer to a powerful heating/air conditioning system — accommodate your every need.



Envoy SLT
in Pewter Metallic, shown with available equipment.

ENVOY

A FOUNDATION FOR COMFORT

A full-size van's foundation is its chassis, which provides a supple, well-controlled suspension for easy handling and daily driveability. Savana also features an exclusive full-length box frame¹ that resists bending and torsional forces and helps produce a smooth, comfortable ride. With five engines to choose from, and available with two different wheelbases, Savana also provides a perfect foundation on which to build the conversion you're looking for. All models come standard with a four-wheel antilock braking system to help you maintain steering control on most slippery surfaces even during hard braking situations.

Vehicles shown with conversion supplied by an independent supplier. See page 20 for information on alterations and warranties.
¹Excludes other GM vehicles.



Conversion Savana provides room for a variety of conversions available from independent manufacturers.



Space Choose a seating configuration for 8, 12 or 15 passengers. Or enjoy up to 316.8 cubic feet of cargo space with the seats removed.



Commercial Use A cargo version provides a range of applications for specialty use with up to 316.8 cubic feet of interior space and available rear swing-out doors that open a full 165°.



Savana Conversion

in Dark Toreador Red Metallic, shown with available equipment.

SAVANA

LIFE IS TOO BIG FOR A MINIVAN

Imagine a van capable of carrying your family's dreams. Welcome to Safari. Safari's Vortec 4300 engine is the largest standard engine in its class¹ and features a sequential fuel injection system that precisely meters fuel delivery for power and efficiency. With the towing power to handle your biggest plans—including an available towing package that lets Safari haul up to 5,900 pounds²—it's the perfect weekend companion. Its rigid chassis and independent front suspension provide a comfortable ride and precise steering control even when fully loaded. And it offers available 7- or 8-passenger seating. All of which means Safari is the mid-size family van that's ready for almost anything—and everything—life has to offer.

¹Excludes other GM vehicles. ²Maximum trailer ratings are calculated assuming a standard-equipped base vehicle plus driver. The weight of optional equipment, passengers, cargo plus required trailering equipment will reduce the maximum trailer weight. See the *GMC Trailering Guide* for details.



Best Towing In Class¹ With the available towing package, Safari can easily handle up to 5,900 pounds², which is the highest tow rating in its class.



Cargo Space With the rear seat removed, there's 104.4 cubic feet of cargo room—enough for a weekend's worth of camping gear.



All-Wheel Drive Safari's available all-wheel drive system automatically provides extra traction when you need it, giving you added control when you need it most.



Safari SLE in Light Toreador Red Metallic
with Light Autumnwood Metallic lower, shown with available equipment.

SAFARI

LOAD IT WITH CARGO OR THROW IT A CURVE

Whether you need to handle a tough road—or carry a full load—the Sonoma is engineered to get the job done right. A rigid, boxed frame with two-piece frame rails helps produce precise steering on winding roads while also handling cargo. Standard four-wheel antilock braking helps maintain steering control during hard braking situations. In foul weather, available Insta-Trac® shift-on-the-fly 4WD is an excellent alternative to the standard 2WD. And for 2001, an available Crew Cab lets you choose the model with exactly the right passenger-carrying capabilities.

¹Maximum payload capacity includes weight of driver, passengers, optional equipment and cargo. ²Maximum trailer ratings are calculated assuming a standard-equipped base vehicle plus driver. The weight of optional equipment, passengers, cargo and required trailering equipment will reduce the maximum trailer weight. See the GMC Trailering Guide for details.



Four Suspensions With four available suspension systems—Smooth Ride, Heavy Duty, ZQ8 or Highrider—you can pick the ideal one for your needs.



Two Engines Choose the available Vortec 4300 V6 for rigorous towing needs, or the standard Vortec 2200 for efficiency and responsiveness.



Payload Capacity The Sonoma's powerful engines and durable drivetrain give you a payload capacity of up to 1,540 pounds¹ and towing capability of up to 6,000 pounds.²



Sonoma Extended Cab SLS
in Pewter Metallic, shown with available equipment.

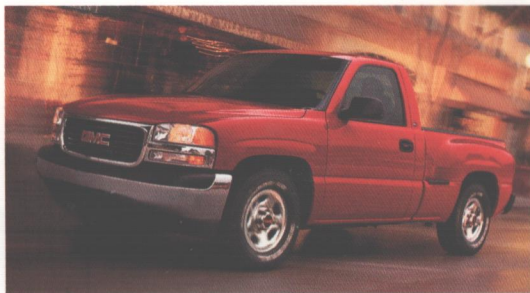
SONOMA

A LESSON IN TRUCKS

THE 2001 SIERRA

After 99 years, we've learned countless lessons about trucks, and the 2001 Sierra is a prime example of how invaluable that experience is. Six engines are available to meet your exact needs: the Vortec V6, four powerful Vortec V8s and the Duramax™ turbo diesel. All of the Vortec V8s produce more than 90 percent of their peak torque from around 1200 rpm to nearly 5000 rpm — which gives you exceptional towing and hauling capabilities. The Tow/Haul feature allows the automatic transmission to hold gears longer and put more torque where it's needed most. In addition, the stiff yet light frame design gives you strength for towing, and helps produce a smooth, quiet ride.

¹Excludes other GM vehicles.



Smooth Handling Five suspension systems are available to meet your individual needs. Choose one for a smooth ride around town, heavy-duty trailering — or anything in between.



Interior Comfort Get comfortable, thanks to more rear legroom than any extended cab pickup in its class,¹ and the most front headroom.¹



Heavy-Duty Design Three-quarter and 1-ton heavy-duty models offer a choice of a Vortec 6000 V8, the all-new Vortec 8100 V8 or the all-new Duramax 6600 turbo diesel V8.



Sierra Extended Cab 4WD SLT
in Fire Red, shown with available equipment.

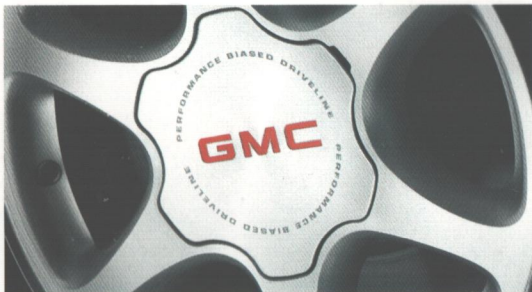
SIERRA

PRECISION-ENGINEERED FOR EXCEPTIONAL CONTROL

THE ALL-NEW SIERRA C³

What does it take to create a truck that offers exceptional control at all times, in virtually all conditions? At GMC, we believe the key is a combination of innovative features that form what we call Performance Biased Driveline. A Vortec 6000 V8 provides exceptional horsepower and torque, and it transfers that power through a smooth-shifting, four-speed automatic transmission. Full-time all-wheel drive helps ensure traction even in wet weather. Four-wheel disc brakes with twin-piston calipers produce outstanding stopping power, and an advanced suspension system, including specially tuned gas-charged shocks, provides a smooth ride. For professional grade towing capabilities — up to 8,700 pounds¹ — a heavy-duty trailering package with weight-distributing hitch is standard.

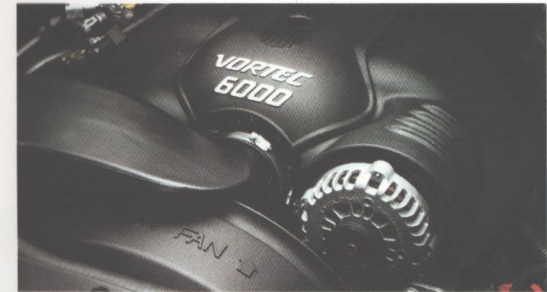
¹Maximum trailer ratings are calculated assuming a standard equipped base vehicle plus driver. The weight of optional equipment, passengers, cargo and required trailering equipment will reduce the maximum trailer weight. See the *GMC Trailering Guide* for details.



17-Inch Wheels For maximum traction and a smooth ride, the C³ features 17-inch wheels, Michelin tires and six-spoke cast aluminum wheels.



Interior Style and Comfort Standard front and rear tone-on-tone leather seating adds style. For the driver and front passenger, both cushions and backrests are heated.



Vortec Power The Vortec 6000 V8 engine produces an impressive 325 horsepower and 370 lb-ft of torque, helping it to offer outstanding towing and hauling capabilities.

THE POWER BEHIND GMC

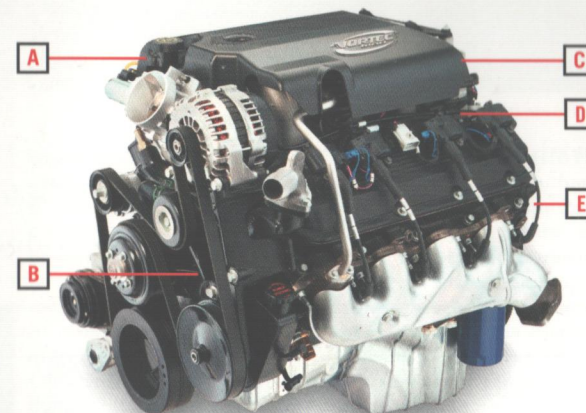
VORTEC AND DURAMAX ENGINE TECHNOLOGY

At GMC, trucks have been our company's sole purpose for nearly a century. It's a dedication you can see and feel in every hard-working pickup, van and sport utility vehicle we offer. We've designed our trucks to offer capabilities beyond your expectations. We understand the unique demands placed on a truck, and that's why we offer no fewer than nine engine configurations to meet those demands. The newest additions to the lineup are most impressive. The all-new Vortec 8100 V8 produces 340 hp and 455 lb-ft of torque — more than the competition's V10s. The all-new Duramax 6600 turbo diesel V8 features a direct-injection overhead-valve design with four valves per cylinder. It produces 300 horsepower and an astounding 520 lb-ft of torque at 1800 rpm, allowing it to offer exceptional towing and hauling capabilities. Of course, every engine in the lineup delivers rugged power for taking on long hauls, heavy loads and harsh driving conditions with confidence and ease. Besides robust power, all of our gasoline engines share the Vortec cylinder head design. By swirling and tumbling the

air as it enters the combustion chamber, much as a tornado twists a column of air, the Vortec cylinder head improves the air-fuel mix for better performance and fuel efficiency. Giving the air a good twist may seem like a small thing — until you step on the accelerator. Now consider that GM

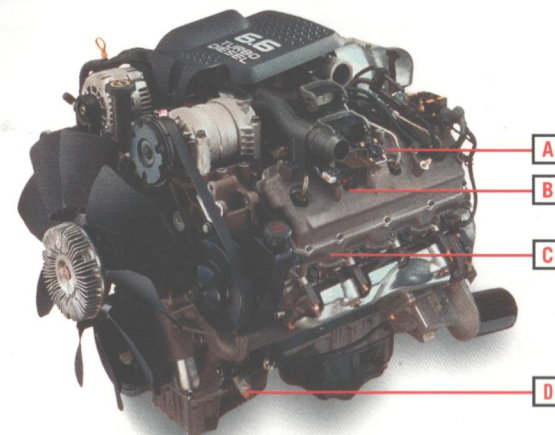
engineers have designed every engine component with the same spirit of innovation and sophistication. We think that speaks volumes about our company's commitment to doing one thing and doing it well — resulting in trucks you can count on to get the job done.

- A** New electronic throttle control system optimizes driveability and fuel economy, and reduces emissions.
- B** Internally balanced crankshaft reduces stress for enhanced durability.
- C** Balanced cooling system distributes equal amounts of coolant to both banks of the cylinder case for more efficient cooling.
- D** Coil-near-plug ignition system produces a reliable, efficient spark.
- E** New extended-tip spark plugs improve idle smoothness.



Vortec 8100 V8 shown.

- A** Aluminum high-swirl cylinder heads with four-valve-per-cylinder design optimizes breathing for good combustion.
- B** Intelligent designs such as a center-mounted turbocharger and oil-spray piston cooling contribute to enhanced durability.
- C** Use of aluminum for key components such as cylinder heads results in lightweight design and improved fuel economy.
- D** Powerful standard block heater has a 1,000-watt capacity for quicker startups in extremely cold weather.



Duramax 6600 turbo diesel V8 shown.

A Note On Child Safety Always use safety belts and proper child restraints, even with air bags. Children are safer when properly secured in a rear seat. Never place a rear-facing infant restraint in the front seat of any vehicle equipped with an active air bag. See your vehicle *Owner's Manual* and child safety seat instructions for more safety information.

Trailer With Your GMC GMC trucks are built strong and durable to handle the demands of towing. Certain equipment that prepares a GMC truck for trailering is standard: a large fuel tank, a 100-amp alternator and a front stabilizer bar. For other available trailering-related equipment, talk to your dealer. You'll need a hitch, of course, and a wide selection of hitch types is available, usually either as factory equipment or from your dealer. In addition, if you plan to tow frequently, you should equip your GMC truck with the available towing package (RPO Z82). This package includes a weight-distributing hitch platform and a heavy-duty eight-wire electrical harness. Also required with this package are a hitch ball, mounting head, and equalizing and anti-sway assemblies; these are available through aftermarket sources. If you have any questions about trailering with a GMC truck, before you buy, feel free to ask your dealer for the *GMC Trailering Guide*.

Off-Road When you go off-road, you should ensure your driving is appropriate to the vehicle and environment. Avoid sharp turns and abrupt maneuvers. Failure to operate vehicles correctly off-road could result in loss of vehicle control or vehicle rollover. When you are off-road, make sure that all cargo is properly loaded and secured. Whenever possible, use established trails, roads and other areas that have been set aside for public off-road recreational driving. And obey posted regulations. Don't drive on private property without the permission of the owner; in some states, you must have it in writing. Avoid any driving practice that could harm the environment or hurt wildlife, such as wheel-spinning, breaking down trees, driving through streams or driving over soft ground. (And never park your vehicle over dry grass or other materials that could catch fire from the heat of the vehicle's exhaust system.)

About This Brochure We have tried to make this brochure comprehensive and factual. We reserve the right, however, to make changes at any time and without notice, in prices, colors, materials, equipment, specifications, models and availability. Since information may have been updated from the time of printing, please check with your GMC dealer for complete details. GMC reserves the right to lengthen or shorten the model year for any product for any reason, or to start and end model years at different times.

Assembly GMC models and their components are assembled or produced by different operating units of General Motors, its subsidiaries or suppliers to General Motors worldwide. We sometimes find it necessary to produce GMC models with different or differently sourced components than originally scheduled. Since some options may be unavailable when your vehicle is assembled, we suggest you verify that your vehicle includes the equipment you ordered, or, if there are changes, that they are acceptable to you. GMC regularly sends its dealers useful GMC product service bulletins. To obtain these bulletins, ask your dealer or call 1-800-GMC-8782.

Engines GMC vehicles are equipped with engines produced by different operating units of General Motors, its subsidiaries or suppliers to General Motors worldwide.



On The Web See more of GMC on our website:
www.gmc.com

- More photos and information
- Hot links to related subjects and features
- Spec out your own vehicle
- Convenient dealer locator
- Pricing guide

Or call 1-800-GMC-8782 (1-800-462-8782).



©2000 GM Corp. All rights reserved. Buckle up, America! Yukon, Sierra, Sonoma, Jimmy, Envoy, Safari, Savana, GM, GMC, the GMC logo, Delco, Freedom, Solar-Ray, PassLock, Commitment Plus and Design and The GM Card are registered trademarks of General Motors Corporation. Do one thing. Do it well., and Vortec are trademarks of General Motors Corporation. GMAC is a registered trademark of General Motors Acceptance Corporation. Theftlock is a registered trademark of Delco Electronics Corporation.



GMC recognizes the importance of mobility to everyone's life and, therefore, offers financial assistance to persons with disabilities through the General Motors Mobility Program. This program can provide up to \$1,000 reimbursement toward the cost of aftermarket mobility adaptive equipment for drivers or passengers, when installed or reinstalled on any eligible purchased or leased new GM vehicle. For details and free resource information, call 1-800-323-9935 (TTY users: 1-800-833-9935).



GMC is proud to be a partner in conservation with The Nature Conservancy, an organization dedicated to protecting the diversity of life on Earth. GMC contributes both money and trucks to support this worthwhile organization.



GMC backs your new vehicle with its non-deductible Bumper to Bumper limited warranty. The entire vehicle is warranted for repairs, including parts and labor, to correct problems in materials or workmanship, for three years or 36,000 miles, whichever comes first (excludes routine maintenance). The warranty covers towing to the nearest GMC dealership, and there is no deductible for warranty repairs during the warranty period. The warranty transfers automatically with vehicle ownership during the warranty period. GMCs are designed and built to resist corrosion. All body sheet-metal components are warranted against rust-through corrosion for six years or 100,000 miles, whichever comes first. Application of additional rust-inhibiting materials is not required, and none is recommended. See your GMC dealer for terms and conditions of these limited warranties. *An important note about alterations and warranties:* Installations or alterations to the original equipment vehicle (or chassis) as distributed by General Motors are not covered by the General Motors New Vehicle Warranty. The special body company, assembler, equipment installer or upfitter is solely responsible for warranties on the body or equipment and any alterations (or any effects of the alterations) to any of the parts, components, systems or assemblies installed by GM. General Motors is not responsible for the safety or quality of design features, materials or workmanship of any alterations by such supplier.



GMC supports the National SAFE KIDS campaign,[®] a grassroots program dedicated to promoting child passenger safety.



Qualified approved customers can conveniently arrange GMAC[®] leasing and financing right at your GMC dealership. For more information, see your dealer or call 1-800-32-SMART.



The GM Card[®] — What are you charging toward?SM The GM Card rewards you 5% on every credit card purchase, making it the fastest way to save toward the GM car or truck of your dreams. For information or to apply for The GM Card, call 1-800-8GM-CARD or visit our website at www.gmcard.com.

All competitive comparisons based on 2000 competitor vehicles.

COMMITMENT PLUS

From the owner orientation—and full tank of gas—you receive when you take possession of your GMC truck to the **24-Hour Roadside Assistance**, **Courtesy Transportation** and **Travel Benefits**, **Commitment Plus** is a portfolio of owner privileges that lasts throughout your warranty. For expert product information, Roadside Assistance or other services, call 1-800-GMC-8782.

COMMITMENT
PLUS

GMC Orientation

- Thorough introduction to your GMC truck
- Complimentary full tank of fuel



PREMIUM Roadside Assistance

- Warranty towing, flat tire change, jumpstarts and more
- Available around the clock



Courtesy Transportation¹

- Free one-way shuttle (up to 10 miles away)
- Reimbursement for alternate transportation (for overnight service)



Travel Benefits

- Trip routing service
- Reimbursement for trip interruption (for warranty repairs)²



The OnStar[®] Safety & Security plan³ is included for one year as part of an option package on the majority of GM vehicles. OnStar combines a unique blend of cutting-edge technology with attentive personal service to provide you with an unparalleled level of safety, security and information services. At the touch of a button, an OnStar Advisor is available to contact emergency service providers or roadside assistance. In an accident in which your air bags deploy, the OnStar system in your vehicle will automatically contact the OnStar Center. There, trained Advisors will immediately contact emergency assistance if needed and provide them with your vehicle's exact location. And, with OnStar MED-NET, your important medical history can be given to the emergency service providers and hospital. In the event of theft, OnStar can track your GMC vehicle and help guide authorities to its location. If you lock your keys in your vehicle, an OnStar Advisor can send a signal to unlock your doors even from thousands of miles away.

¹Discuss the details with your dealer when making an appointment. ²See your GMC dealer or call 1-800-GMC-8782 for complete details, including conditions and restrictions.

³Service contract required. Services will vary depending on your service plan. OnStar uses existing emergency service providers and cellular telephone and satellite technologies. Call 1-800-ONSTAR-7 for system limitations and details.

GMC PRODUCT GUIDE

2001



visit gmc.com 



America Online Keyword: GMC



36 USC 220506

GMC
Official Sponsor of the
U.S. Olympic Team

110-01 Litho in U.S.A.

GMC 7002