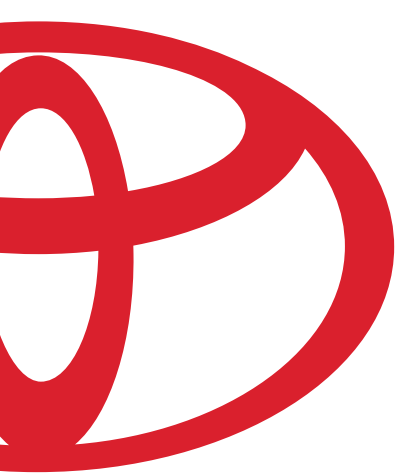




FUN. LOVED. MOST WANTED.

**COROLLA 03**



**THE THINGS WE CARE ABOUT.**

No matter which Toyota you choose, you can be sure of two things. It will deliver the utmost in Quality, Durability and Reliability, the foundation of Toyota's reputation for excellence. And it will perform with maximum respect for the environment. You see, when we build your Toyota, we strive not only to meet your expectations, but to exceed them. Our objective is to make your driving experience better, easier, safer, more convenient, more fun and more environmentally friendly than ever before.

**OUR COUNTRY. 🌍 OUR WORLD.**

Fuel Efficiency, Low Emissions and Recyclability. These are cornerstones of Toyota's global vision, and we are constantly looking for ways to improve. All of our current vehicle line-up complies with Canada's strict low emissions standards. And the remarkable Toyota Prius the world's first hybrid vehicle to achieve Super Ultra Low Emission Vehicle (SULEV)\* designation. Prius combines gasoline and electric power plants to redefine standards in fuel economy and energy efficiency. Toyota is developing and implementing engineering technologies using materials and processes which will contribute to a vehicle recovery rate of at least 95% by 2015. However, our concern for the environment does not stop with our vehicles. Toyota Canada Inc. shares the environmental commitment demonstrated by all the Toyota production facilities and like them our Head Office has achieved the prestigious "ISO 14001 Certified" designation. Toyota has partnered with Evergreen to launch the "Toyota Evergreen Learning Grounds Program". Worldwide, the results of our commitment to the Toyota Earth Charter can be seen in every facet of our business. All in all, it's more than you might expect from an automobile manufacturer, but at Toyota it's the least we expect from ourselves!

*For more details visit [www.toyota.ca](http://www.toyota.ca) \*California Air Resources Board (CARB).*



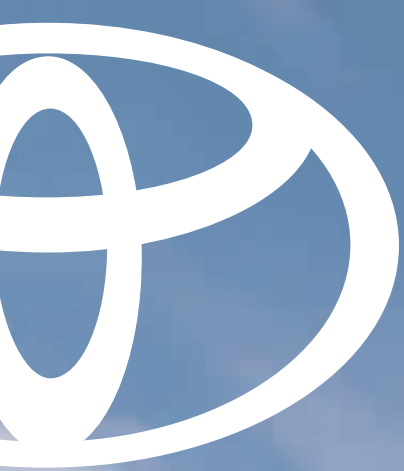
**UNEXPECTED. UNCONVENTIONAL.**

The latest generation Toyota Corolla comes with some surprises. Unconventional styling and unexpected features bring a new approach to a solid bloodline. With its distinct lines, sleek design and equally captivating interior, the 2003 Corolla is all about having fun. But don't worry, it's still a great value. So, whether you are in the market for something sporty or sophisticated, this year's Corolla line-up will be sure to satisfy.

**COROLLA CE:** (Above right) Always a smart choice. The core of the Corolla family, this is the Corolla that prides itself on being affordable, fuel-efficient and well equipped. In other words, a great value.

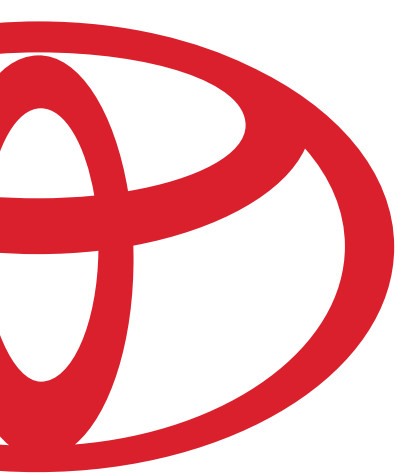
**COROLLA LE:** (Above left) A subtly upscale feel. Once you move past the attractively designed exterior, the LE is equally appealing inside featuring amenities you wouldn't think you'd find in this class of car.  
**COROLLA S:** (Above centre) Colour-keyed bumper spoilers and side skirts set the tone for the Corolla Sport's aggressive styling. Inside, the S continues with wish-list features that come standard.

# COROLLA 03



corolla 03



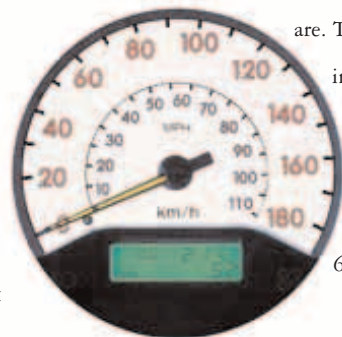


**THE SPORTY COROLLA.**

On the racier side of the yellow lines is the Corolla S. Sleek and stylish, yet with a generous dose of mischief. Check out that spoiler. This is one vehicle you'll like driving as much as you do looking at it. The Corolla S offers 130 horses, ready and waiting to take you where the good times

are. The engine features Variable Valve Timing with intelligence (VVT-i), so you can take off. In style.

The eye-catching instrument panel with its special gauge cluster, chrome-accents, leather wrapped steering wheel and an AM/FM ETR/CD with 6-speakers have sporty written all over them.



Corolla S offers a silhouette sport speedometer.



Preceding page: Corolla S shown in Titanium Metallic.

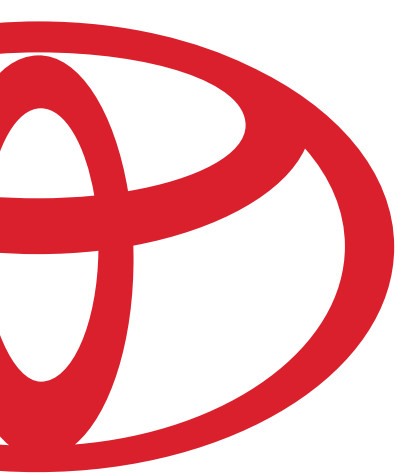


Far left: Corolla's stylish instrument panel. Near left: Corolla S comes complete with a sporty spoiler.

Above top: The eye-catching sporty interior of the Corolla S with its leather wrapped steering wheel shown with optional equipment.

# COROLLA 03





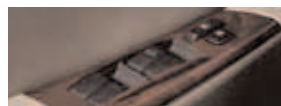
08

Right: The comfortable and richly appointed Corolla LE interior shown with optional equipment.



**A SUBTLY UPSCALE FEEL.**

Corolla LE just may be the ultimate blend of style and substance. Don't be surprised if your neighbours think you got a raise. You always knew the Corolla LE was a smart buy, but now it's loaded with a whole lot of features you wouldn't expect in a car in this class. The Corolla LE makes even waiting for a red light to turn green entertaining. It offers more inside than you might think. The spacious cabin comes complete with a CD player, woodgrain style accents and air conditioning with a clean air filter to name but a few. A leather interior and moonroof are available.

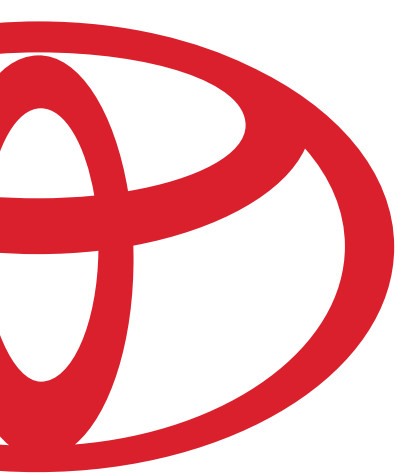


Facing page: Corolla LE shown in Mineral Green Opal. Far left: Corolla LE's power window and door lock control. Near left: Enjoy the AM/FM CD with six speakers.



COROLLA 03





**ALWAYS A SMART CHOICE.**

A great way to start building upon your dreams. The Corolla CE has plenty of room for five adults – more than sufficient power in the 1.8 Litre, DOHC, 16-valve, 4-cylinder, VVT-i engine to accelerate onto the highway or motor up a mountain grade. The standard 5-speed manual over-drive transmission is smooth and positive.



The rear stabilizer bar enhances the excellent road feel of the MacPherson strut suspension and the rack and pinion steering is concise and direct. It's a smooth, quiet ride on the road to your future.

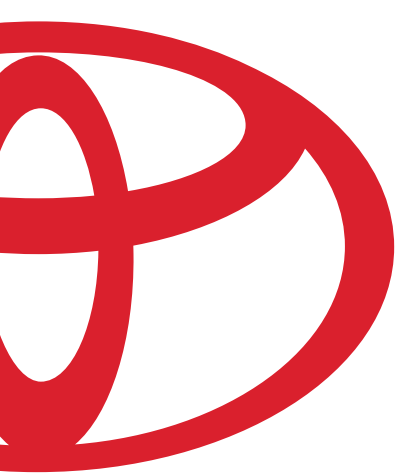
The 2003 Corolla CE – really great value.



Above top: Corolla CE instrument panel with optional equipment.  
Above left and facing page: Corolla CE shown in Black Sand Pearl with optional equipment.



# COROLLA 03



**LOOKING GOOD. BEING SAFE. IT'S NOT AN EITHER/OR.**



The 2003 Corolla offers both. Even to the spirited Corolla, some things are entirely serious. Just beneath its playful personality you'll find a wealth of safety features with serious intent. For instance, Corolla has multi-stage driver and front passenger airbags that deploy to various levels based on the severity of the impact. The 2003 Corolla is driven by Toyota's powerful VVT-i (Variable Valve Timing with



intelligence) engine which optimizes engine efficiency by constantly retarding or advancing intake valve timing depending on conditions and engine speeds - resulting in exceptional low-end torque to get you off the line, mid-range punch for passing situations and clean-burning efficiency throughout the rev range. And for sure stopping power, Corolla LE also has 4-wheel ABS (Antilock Braking System) with EBD (Electronic Brake-force Distribution). And that's just for starters. So rest assured. Because Corolla is all about putting a smile on your face... and keeping it there. Safety and fun coexisting harmoniously. It's a beautiful thing.

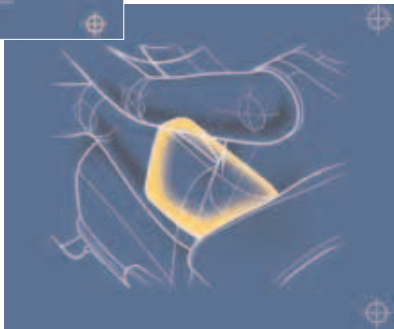


Above top: Multi-stage driver and front passenger airbags (side airbags available as optional equipment on LE models).  
 Above left: A visual example of Corolla LE's ABS (Antilock Braking System) in action.  
 Above right: Corolla's efficient VVT-i engine.



**COROLLA SAFETY FEATURES:**

- Front & rear energy absorbing crumple zones.
- Side-impact door beams.
- Trunk entrapment release.
- Hood hold-down hooks.
- Door ajar, low fuel & headlamp on warnings.
- ABS (Antilock Braking System) on the LE model.
- Driver & front passenger airbag Supplemental Restraint System (SRS).
- Energy absorbing steering column.
- 3-point front seatbelts with adjustable seatbelt anchors, driver's Emergency Locking Retractor (ELR) & passenger side Automatic/Emergency Locking Retractor (ALR/ELR).
- Front seatbelt pretensioners with force limiters.
- 3-point rear seatbelts in all positions with Automatic/Emergency Locking Retractor (ALR/ELR).
- Energy absorbing upper interior trim.
- Adjustable front & rear headrests.
- Child protector rear door locks.



Above top left: Front seatbelt pretensioners with force limiters.  
 Above right: Driver and front passenger side airbags (available on LE model).

**TOYOTA COROLLA ACCESSORIES 2003**

From that first drive home in your new Corolla until the day you part with it, we want your entire ownership experience to be enjoyable and satisfying. That's why at every Toyota Dealership you'll find answers to your questions, help with selecting Genuine Toyota Parts and Accessories, and quality service to keep your Corolla in top shape. The location of your nearest Toyota Dealer can be found on our website at [www.toyota.ca](http://www.toyota.ca) or by calling 1-888-TOYOTA-8.



A REAR SPOILER will add a sporty look to your new Corolla. The Toyota designed CARGO NET keeps your parcels safely in place.



- ADDITIONAL ACCESSORIES NOT SHOWN:**
- All-weather mats
  - Block heater
  - Cargo liner
  - Cruise control
  - Dash accent kits
  - Hood deflector
  - Hood mask
  - Licence plate cover
  - Mini receiver hitch with bike & ski adaptors
  - Rear bumper protector
  - Security system
  - Side window vent visors
  - Wheel locks

# COROLLA 03

COROLLA FEATURES 2003

COROLLA	CE	SPORT	LE
<b>INTERIOR:</b>			
• Audio: AM/FM Stereo Compact Disc, 4 Speakers, Roof Mounted Antenna	•		
• Audio: AM/FM Stereo Compact Disc, 6 Speakers, Roof Mounted Antenna		•	•
• Climate Control: Rear Seat Heater Ducts	•	•	•
• Climate Control: Air Conditioning, Deodorizing Dust & Pollen Air Filter		•	•
• Front Seat Type: Bucket Seats	•	•	•
• Driver Seat Adjustments: Recline, Headrest-Vertical	•		
• Driver Seat Adjustments: Recline, Vertical, Headrest-Vertical		•	•
• Passenger Seat Adjustments: Recline, Headrest-Vertical	•	•	
• Rear Seat Adjustments: Fold Down Rear Seat (60/40), Headrest-Vertical	•	•	•
• Seats: Fabric Seat Material	•	•	•
• Power Windows w/Driver Side Auto Down			•
• Instrumentation: Tachometer, Water Temperature Gauge, Outside Temperature Gauge	•		
• Instrumentation: Silhouette Lighted Gauges, Tachometer, Water Temperature Gauge, Outside Temperature Gauge		•	•
• Dual Vanity Mirrors	•	•	•
• Chrome Vent Knobs		•	
• Chrome Inner Door Handles		•	
• Leather Wrapped Steering Wheel		•	
• Fabric Door Trim	•	•	•
• Simulated Woodgrain Trim			•
• Driver Footrest	•	•	•
• 3-Spoke Steering Wheel, Tilt Steering	•	•	•
• Power Door Locks		•	•
• Key Lockout Protection		•	•
• Fadeout Dome Lamp		•	•
• Driver & Front Passenger Seatbelt Warning	•	•	•
• Carpet Floor Mats	•	•	•

• - Standard ○ - Optional \*See Airbag Notice  
Information correct at time of printing. Subject to change without notice.

COROLLA	CE	SPORT	LE
<b>SAFETY:</b>			
• Dual Stage Driver & Passenger Airbag Supplemental Restraint System (SRS)*	•	•	•
• Front Seatbelt Pre-Tensioners & Force Limiters	•	•	•
• All-Position 3-Point Lap & Shoulder Belts	•	•	•
• Adjustable "B" Pillar Shoulder Belt Anchors	•	•	•
• Anchor Points for Child Restraint Seats	•	•	•
• Child Protector Rear Door Locks	•	•	•
• Warnings: Low Engine Oil Level, Low Fuel, Low Washer Fluid, Door Ajar	•	•	•
<b>CONVENIENCE:</b>			
• Digital Clock, Front & Rear Cup Holders, Accessory Power Outlet, Driver's Coin Case Compartment	•	•	
• Cruise Control, Digital Clock, Front & Rear Cup Holders, Accessory Power Outlet, Driver's Coin Case Compartment			•
• Door Map Pockets	•	•	
• Keyless Entry		•	•
<b>EXTERIOR:</b>			
• 4-Door Sedan	•	•	•
• Full Wheel Covers	•		
• Aluminum Alloy Wheels		•	•
• Side Window Defoggers, Electric Rear Window Defroster w/Timer		•	•
• Tinted Glass	•	•	•
• Fuel Cap Hanger	•	•	•
• Coloured Bumpers	•	•	•
• Coloured Rear Spoiler, Mirrors, Body Side Mouldings, Side Skirts		•	
• Coloured Mirrors, Body Side Mouldings			•
• Front & Rear Splash Guards	•	•	
• Power Remote Mirrors	•	•	•
• Intermittent Wipers	•		
• Variable Intermittent Wipers		•	•
• Halogen Headlamps	•	•	•
• Fog Lamps		•	

COROLLA	CE	SPORT	LE
<b>Option Packages:</b>			
<b>CE PACKAGE 'B':</b>			
• Air Conditioning, Deodorizing Dust & Pollen Air Filter, Keyless Entry, Power Door Locks, Fade-Out Dome Lamp	○		
<b>LE PACKAGE 'B':</b>			
• Front Side Airbags, Leather Seat Surfaces, Power Moonroof, Electrochromic Rear View Mirror with Digital Compass, Leather Wrapped Steering Wheel, Chrome Inner Door Handles, Anti-Theft System, Fog Lamps			○
<b>SPORT PACKAGE 'B':</b>			
• Power Windows w/Driver Side Auto Down, Cruise Control, Power Moonroof		○	
<b>Additional Accessories:</b>			
• All-Weather Floor Mats	○	○	○
• Block Heater	○	○	○
• Cargo Liner	○	○	○
• Cargo Net	○	○	○
• Cruise Control	○	○	○
• Dash Accent Kit	○	○	○
• Hood Mask	○	○	○
• Hood Deflector	○	○	○
• Licence Plate Cover	○	○	○
• Mini Receiver Hitch with Bike & Ski Adaptors	○	○	○
• Rear Bumper Protector	○	○	○
• Rear Spoiler	○	○	○
• Security System, Wheel Locks	○	○	○
• Side Window Vent Visors	○	○	○

COROLLA SPECIFICATIONS 2003

COROLLA	CE	SPORT	LE
<b>MECHANICAL</b>			
<b>Engine 1MZ-FE</b>	• 1.8 Litre (1794 cc), 4-Cylinder, DOHC, 16-Valve, Variable Valve Timing with intelligence (VVT-i), ULEV <sup>1</sup> , Stainless Steel Exhaust System		
<b>Compression Ratio</b>	• 10.0:1		
<b>Horsepower (kW)</b>	• 130 (96.9) @ 6,000 rpm		
<b>Torque (N.m.)</b>	• 125 (169) @ 4,200 rpm		
<b>Suspension</b>	• <b>Front:</b> Independent, MacPherson Gas Struts, Coil Springs, Stabilizer Bar • <b>Rear:</b> Torsion Beam Type, Coil Springs, Stabilizer Bar		
<b>Drivetrain</b>	• Front-Wheel Drive		
<b>Transmission</b>	• 4-Speed Electronically Controlled Overdrive Automatic with Overdrive Cancel Switch • 5-Speed Overdrive Manual		
<b>Brakes</b>	• Power Assisted, Front Ventilated Discs, Rear Drums • Power Assisted, ABS (Antilock Braking System), Front Ventilated Discs, Rear Drums		
<b>Steering</b>	• Rack & Pinion		
<b>Tires</b>	• All-Season Radials P185/65R15 • All-Season Radials P195/65R15		
<b>DIMENSIONS</b>			
<b>Length</b>	4530 (178.3)		
<b>Width</b>	1700 (66.9)		
<b>Height (Unloaded)</b>	1480 (58.3)		
<b>Wheelbase</b>	2600 (102.4)		
<b>Tread</b>	<b>Front:</b> 1480 (58.3)	<b>Rear:</b> 1460 (57.5)	
<b>Seating Capacity</b>	5		
<b>Ground Clearance</b>	145.4 (5.72) 153.4 (6.03)		
<b>Headroom</b>	<b>Front:</b> 992 (39.1)	<b>Rear:</b> 943 (37.1)	
<b>Headroom with Moonroof</b>	<b>Front:</b> 960 (37.8)	<b>Rear:</b> 940 (37.0)	
<b>Legroom</b>	<b>Front:</b> 1049 (41.3)	<b>Rear:</b> 899 (35.4)	
<b>Shoulder Room</b>	<b>Front:</b> 1350 (53.1)	<b>Rear:</b> 1358 (53.5)	

• - Standard ○ - Optional

\*See Airbag Notice <sup>1</sup>Meets Environment Canada and U.S. Environmental Protection Agency (EPA) and California Air Resources Board (CARB) Ultra Low Emission Vehicle (ULEV) standards. \*\*These estimates are based on the Government of Canada's approved criteria and testing methods. The actual fuel consumption of this vehicle may vary. Refer to the Government of Canada publication — EnerGuide Fuel Consumption Guide. Information correct at time of printing. Subject to change without notice.

COROLLA	CE	SPORT	LE
<b>GROSS VEHICLE WEIGHT</b>	<i>kg (lbs.)</i> 1625 (3582)		
<b>CURB WEIGHT</b>	<i>kg (lbs.)</i>		
	Manual 1135 (2502)	Automatic 1165 (2568)	Manual 1145 (2524)
	Automatic 1175 (2590)		
<b>TOWING CAPACITY</b>	<i>kg (lbs.)</i> 680 (1500)		
<b>CARGO CAPACITY</b>	<i>m<sup>3</sup> (cu. ft.)</i> .39 (13.6)		
<b>COEFFICIENT OF DRAG</b>	<i>cd.</i> 0.29		
<b>TURNING CIRCLE</b>	<i>m (ft.)</i> 10.7 (35.2)		
<b>FUEL CAPACITY</b>	<i>litres (gal.)</i> 50.0 (11.0)		
<b>FUEL CONSUMPTION RATING**</b>	<i>L / 100 km mpg</i>		
City/Highway	Automatic 8.1/5.8	35/49	○ ○ ○
	Manual 7.1/5.3	40/53	• • •



**TAKE NOTE:**

\***Airbag Notice:** The 2003 Corolla features a driver & front passenger airbag Supplemental Restraint System (SRS) which activates only in a full frontal collision of sufficient magnitude to inflate the bags. In moderate frontal collisions, the airbags may not inflate, in a rear or side collision the airbags are designed not to inflate, so the primary protection is provided by the lap and shoulder belt system. The 2003 Corolla LE is available with a Side-Impact airbag Supplemental Restraint System (SRS) which activates only in a side-impact collision of sufficient magnitude to inflate the bags.

*Seatbelts must be worn at all times by all occupants.*

**COROLLA COLOURS:**



040 Alpine White/Bone<sup>1/3</sup> & Dark Grey<sup>4</sup> Interior



1C8 Titanium Metallic/Stone<sup>2</sup>, Bone<sup>3</sup> & Dark Grey<sup>4</sup> Interior



1E6 Moonshadow Metallic/Stone<sup>2</sup>, Bone<sup>3</sup> & Dark Grey<sup>4</sup> Interior



209 Black Sand Pearl/Stone<sup>2</sup>, Bone<sup>3</sup> & Dark Grey<sup>4</sup> Interior



3M5 Sandrift Metallic/Bone<sup>1/3</sup> Interior



3P1 Impulse Red/Stone<sup>2</sup>, Bone<sup>3</sup> & Dark Grey<sup>4</sup> Interior



6R6 Mineral Green Opal/Bone<sup>1/3</sup> & Dark Grey<sup>4</sup> Interior



8P4 Indigo Ink/Bone<sup>1/3</sup> & Dark Grey<sup>4</sup> Interior

<sup>1</sup>Bone Cloth Fabric on CE & LE

<sup>2</sup>Stone Cloth Fabric on CE & LE

<sup>3</sup>Bone Leather Optional on LE

<sup>4</sup>Dark Grey Cloth Fabric on Sport

Toyota Canada Inc. Every effort has been made to ensure the specifications and equipment shown are accurate based on information available at time of printing. In some cases, certain changes in standard equipment, options or product delays may occur which would not be reflected in this brochure. Toyota Canada Inc. reserves the right to make these changes without notice or obligation.

The Toyota website [www.toyota.ca](http://www.toyota.ca) – or your Toyota Dealer is your best source for up-to-date information.

**VEHICLE COVERAGE** *New Vehicle Warranty Summary* *No Deductibles – No Transfer Fees*

**Comprehensive Coverage - 3 years or 60,000 km**

This warranty includes 24 hour Roadside Assistance and other benefits, as well as coverage of repairs on any part of the vehicle that is defective in material or workmanship under normal use and maintenance. Different warranties apply to original tires.

**Powertrain Components - 5 years or 100,000 km**

This warranty covers repairs to powertrain components that are defective in material or workmanship under normal use and maintenance.

**Major Emission Control Components -**

**8 years or 130,000 km**

This warranty covers repairs to specified major emission components that are defective in material or workmanship under normal use and maintenance.

**Corrosion Perforation - 5 years unlimited distance**

Any sheet metal found, under normal use, to have developed a perforation from corrosion due to defects in material or workmanship.



**CAA® Pyramid Award**

Voted best for owner satisfaction, reliability and low repair frequency and cost, Toyota has earned this award 16 times in the last 20 years.



With Extra Care Protection, your new Toyota has inflation protected coverage from mechanical failures, to road emergencies, and much more. It is the affordable and cost effective way to guarantee your peace of mind and to protect your investment whether you buy or lease.

ECP is not a warranty... it's much more! It can provide you and your new Toyota with coverage such as Towing, Emergency Road Service, Rental Assistance, Tire Road Hazard Protection and also includes the 3 first factory recommended lubrication intervals. ECP Plans can cover you on up to 17 major mechanical component groups after the manufacturer's warranty expires. Please consult your Toyota Dealer for further details on this very valuable and affordable option.



**TOYOTA EXPERIENCE**

Toyota Dealers are dedicated to making the experience of owning a Toyota both satisfying and rewarding. The satisfaction comes from knowing that highly skilled, Toyota-trained technicians using Toyota Genuine Parts are maintaining your vehicle at truly fair and competitive prices. The reward comes in the form of years of trouble-free driving in a vehicle that will hold its value remarkably well. "That new Toyota feeling - we help you keep it."



**TOYOTA GRADUATE PROGRAM**

This program assists new graduates in their purchase of a New or Certified Used Toyota. The program differs depending on the model chosen. Be sure to ask your Dealer when purchasing your Toyota. Some conditions may apply.



**THE EASY AND AFFORDABLE WAY TO FINANCE OR LEASE YOUR TOYOTA.**

Toyota Financial Services offers quality leasing and financing for your Toyota. We believe that your toughest decision should be choosing which Toyota model you want, so we've made purchasing and leasing your Toyota easy. You can count on us to provide the same superior level of service and quality that you know and expect from Toyota.

*Why choose Toyota Financial Services?*

- Competitive interest rates
- Flexible terms of up to 60 months
- Convenient, one stop shopping available at all Toyota Dealerships
- Web services
- Save time and get pre-approved on-line before you shop
- Check out our competitive rates on-line. *You won't be disappointed!*

Come visit us at [www.toyotafinancialservices.ca](http://www.toyotafinancialservices.ca) or call us at 1-888-TOYOTA-8.



Toyota Canada and its Dealers are proud sponsors of Canadian Special Olympics.



# COROLLA 03



ECHO



PRIUS



MATRIX



COROLLA



CAMRY



SOLARA



AVALON



CELICA



SIENNA



TACOMA



TUNDRA



RAV4



4RUNNER



HIGHLANDER



SEQUOIA



1-888-TOYOTA-8  [www.toyota.ca](http://www.toyota.ca)



Toyota recognizes its duty to safeguard the environment. To support this concern, our brochure is printed on recycled paper with vegetable based inks to be fully recyclable.  
Printed in Canada 125M C0002-0413E-50