

sleek. playful. dream of open roads.

**SOLARA 03**



**THE THINGS WE CARE ABOUT.**

No matter which Toyota you choose, you can be sure of two things. It will deliver the utmost in Quality, Durability and Reliability, the foundation of Toyota's reputation for excellence. And it will perform with maximum respect for the environment. You see, when we build your Toyota, we strive not only to meet your expectations, but to exceed them. Our objective is to make your driving experience better, easier, safer, more convenient, more fun and more environmentally friendly than ever before.

**OUR COUNTRY. 🇨🇦 OUR WORLD.**

Fuel Efficiency, Low Emissions and Recyclability. These are cornerstones of Toyota's global vision, and we are constantly looking for ways to improve. All of our current vehicle line-up complies with Canada's strict low emissions standards.

And the remarkable Toyota Prius the world's first hybrid vehicle to achieve Super Ultra Low Emission Vehicle (SULEV)\* designation. Prius combines gasoline and electric power plants to redefine standards in fuel economy and energy efficiency.

Toyota is developing and implementing engineering technologies using materials and processes which will contribute to a vehicle recovery rate of at least 95% by 2015. However, our concern for the environment does not stop with our vehicles.

Toyota Canada Inc. shares the environmental commitment demonstrated by all the Toyota production facilities and like them our Head Office has achieved the prestigious "ISO 14001 Certified" designation. Toyota has partnered with Evergreen

to launch the "Toyota Evergreen Learning Grounds Program". Worldwide, the results of our commitment to the Toyota Earth Charter can be seen in every facet of our business. All in all, it's more than you might expect from an automobile

manufacturer, but at Toyota it's the least we expect from ourselves!

*For more details visit [www.toyota.ca](http://www.toyota.ca) \* California Air Resources Board (CARB).*



**A FRESH YOUNG LOOK**

Distinctive as ever, Solara's silhouette is enhanced by its sleek lines, incorporating elegant features including a stylish yet rakish front grille, multi-reflector headlamps and rear combination taillamps. For 2003 Solara continues its ongoing romance with the road – wrapping you in style and placing the power of a 200 HP V6\* in your hands.

The clean lines form a harmonious balance between the rounded and the angular, a statement of your own artistic sense.

And the entire body design, ever beautiful, suggests at once timeless style and a different mind-set, making every drive pure pleasure. Solara – the very personal touring car from Toyota, available in both Coupe or Convertible.

We know you can relate.

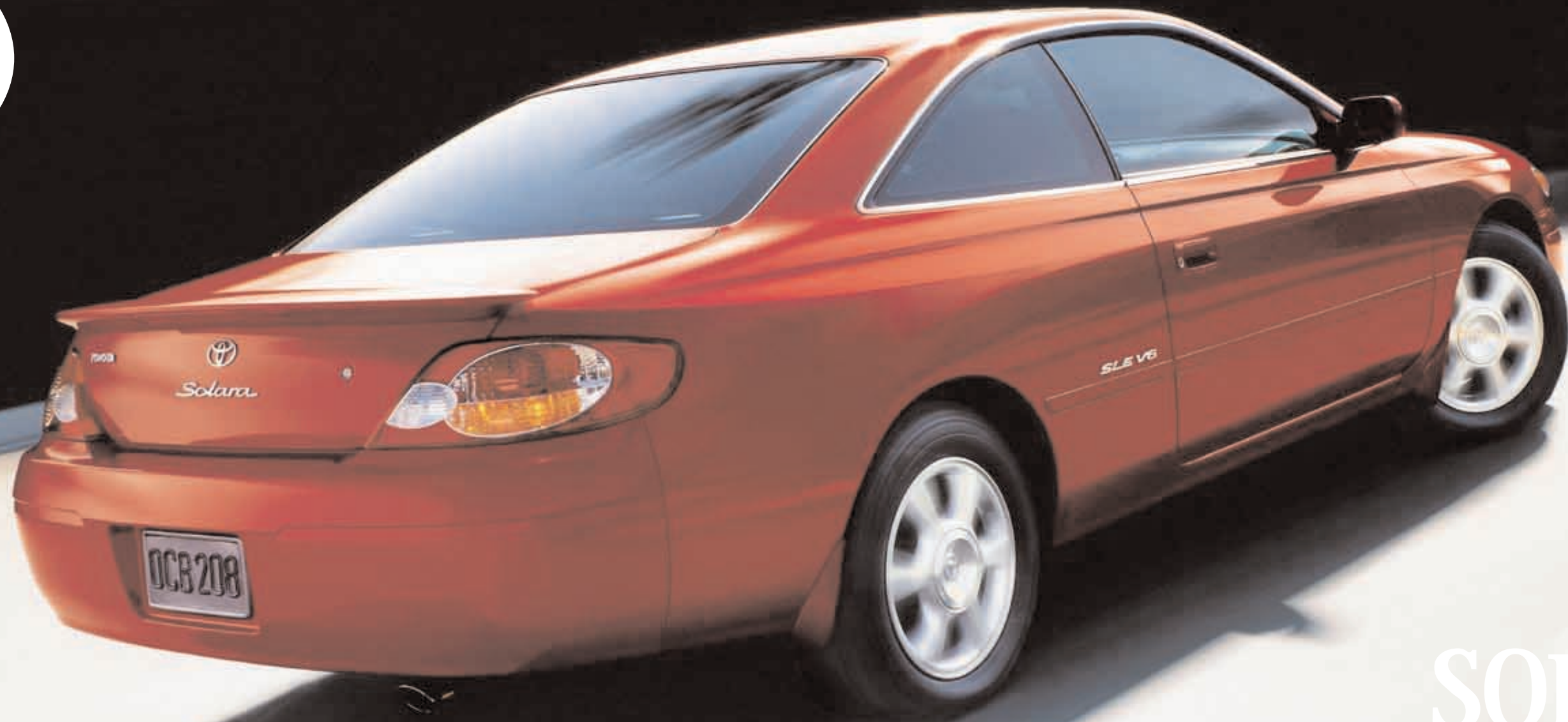
*\*SLE V6 and Convertible.*

**SOLARA SLE V6:** (Above left) Includes a wide range of additional luxury items such as an auto-dimming electrochromic rear view mirror and an outside temperature gauge.

**SOLARA SE:** (Above right) Luxury features abound. While under the hood, the powerful 157 HP engine is ready to take you anywhere.

**SOLARA CONVERTIBLE:** (Above centre) For top-down driving enjoyment. The convertible features a power folding roof with a real glass rear window, a colour-keyed rear spoiler and a specially designed JBL Premium 3-in-1 AM/FM cassette CD changer with 7-speakers.

# SOLARA 03



SOLARA 03





06

### COMMANDING COMFORT

Settle into the rich leather seats of Solara SLE V6 and you may find yourself unwinding before you even turn the key. Yet, Solara's interior, for all its luxurious accommodation, also gives you an ultimate feeling of command. The rounded instrument panel places vital information within a glance, with all controls just a touch away. You are more a pilot than merely a driver. With its premium-grade leather seating, woodgrain accents, power door locks/windows/outside mirrors, Solara SLE V6 treats you to the luxury you deserve. Relax as you take the wheel and feel the surge of power delivered by the 200 HP 3.0 Litre



Near left: Solara SLE V6's rounded instrument panel places vital information within a glance.

Far left: Solara SLE V6's ergonomic and luxurious leather interior.

07

V6 Low Emission Vehicle (LEV) engine. But you barely hear it. Solara is quiet. Very quiet. Allowing you to enjoy the premium sound system to its utmost. The 8-way power adjustable driver's seat is contoured and features a manual lumbar adjustment. Solara's responsive handling and smooth ride complete the sensation. You're ready to go.

Preceding page: Solara SLE V6 shown in Red Flame Metallic.



From far left: Solara's power window and door lock control. Available auto climate control with outside temperature gauge. Solara's auto-dimming electrochromic rear view mirror. You can set the mood with a Premium AM/FM cassette CD changer system with eight JBL speakers in six locations. (All images shown - SLE V6)

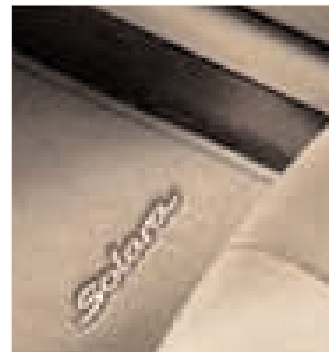
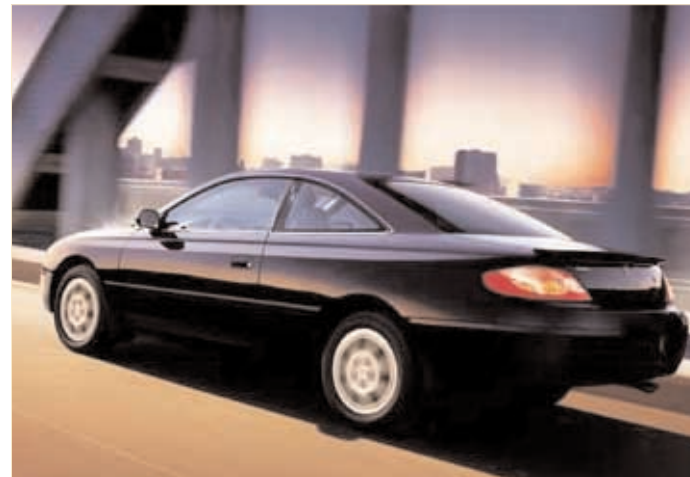
# SOLARA 03



### THE CLASSIC LOOK

Once in a lifetime, the perfect car comes along when you're perfectly ready to own it. 2003 Solara SE is that car. The classic coupe lines deceptively hide far more interior space than you'd expect to find in a car this exciting to look at, this enjoyable to drive. From the design of the cabin itself to specific features like front seatbelts with pretensioners and force limiters, Solara SE is built upon certain very important goals. Your safety. And your peace of mind. For that reason, ABS is standard. And even the front passenger is reminded to use a seatbelt. Because Solara SE understands that while we can't make the world safer, we can do our utmost to make you safer in the world.

Above: Solara SE shown in Sparkling Gold Metallic with optional equipment.  
Above from top right: Solara SE shown in Black Sand Pearl with optional equipment.  
Solara's embroidered plush carpet mats and convenient dual rear cup holders.



### TOYOTA SOLARA ACCESSORIES 2003

From that first drive home in your new Solara until the day you part with it, we want your entire ownership experience to be enjoyable and satisfying. That's why at every Toyota Dealership you'll find answers to your questions, help with selecting Genuine Toyota Parts and Accessories, and quality service to keep your Solara in top shape. The location of your nearest Toyota Dealer can be found on our website at [www.toyota.ca](http://www.toyota.ca) or by calling 1-888-TOYOTA-8.



A HOOD DEFLECTOR will protect your Solara from road debris. The Toyota designed CARGO NET keeps your parcels safely in place. Solara's custom designed MOONROOF WIND DEFLECTOR in smoked acrylic.



#### ADDITIONAL ACCESSORIES NOT SHOWN:

- Block heater
- Hood mask
- Licence plate cover
- Padded centre armrest
- Trunk mat
- Security system



# SOLARA 03

## SOLARA FEATURES 2003

SOLARA	SE	SLE V6	SLE V6 CONVERT.
<b>INTERIOR:</b>			
• Dual Trip Odometer/Tachometer	•	•	•
• Illuminated Ignition Key	•	•	•
• Illuminated Entry with Fade-Out System	•	•	•
• Automatic Headlamp Control System	•	•	•
• Driver & Front Passenger Illuminated Vanity Mirrors	•	•	•
• Electrochromic Rear View Mirror	•	•	•
• Outside Temperature Gauge	•	•	•
• Front Passenger Seat Adjustments, Recline, Headrest-Vertical & Tilt, Rear Walk-In Assist	•	•	•
• Driver Seat Adjustments, Recline, Headrest-Vertical & Tilt, Lumbar Support, Cushion Height	•	•	•
• Driver Seat Adjustments, Recline (Power), Headrest-Vertical & Tilt, Lumbar Support, Cushion Height (Power), Fore/Aft (Power)	•	•	•
• Rear Seat 60/40 Split, Fold-Down Seat Back	•	•	•
• Seat Back Pockets	•	•	•
• Low Back Front Bucket Seats	•	•	•
• Premium Fabric Seat Material	•	•	•
• Premium Leather Seat Surfaces, Synthetic Leather Door Trim	•	•	•
• Fabric Headliner, Simulated Wood Trim	•	•	•
• Door Map Pockets, Locking Glove Box, Carpet Mats	•	•	•
• Leather Wrapped Steering Wheel, Leather Wrapped Shift Knob	•	•	•
• Tilt, 4-Spoke Steering Wheel	•	•	•
• Carpeted Trunk, Interior Trunk Access	•	•	•
• AM/FM Cassette CD, 6-Speakers, Glass Imprinted Antenna	•	•	•
• JBL Audio AM/FM Cassette CD Changer, 7-Speakers	•	•	•
• Power Antenna	•	•	•
• JBL Audio AM/FM Cassette CD Changer, 8-Speakers in 6 Locations, Glass Imprinted Antenna	•	•	•
• Air Conditioning, Rear Seat Heater Ducts	•	•	•
• Automatic Air Conditioning, Rear Seat Heater Ducts, Soft Touch HVAC	•	•	•
• Power Windows with Driver Side "Auto Down"	•	•	•
• Power Door Locks with "Key Lockout Protection"	•	•	•

- - Standard    ◊ - Optional    \*See Airbag Notice  
Information correct at time of printing. Subject to change without notice.

SOLARA	SE	SLE V6	SLE V6 CONVERT.
<b>CONVENIENCE:</b>			
• Digital Clock, Front & Rear Cup Holders	•	•	•
• Keyless Entry System, Cruise Control	•	•	•
• Integrated Garage Door Opener	•	•	•
• Accessory Power Outlet, Retained Accessory Power	•	•	•
• Sunglass/Garage Door Remote Storage	•	•	•
• Centre Console	•	•	•
<b>SAFETY:</b>			
• Driver & Front Passenger Airbag Supplemental Restraint System (SRS)*	•	•	•
• Driver & Front Passenger Side Airbag Supplemental Restraint System (SRS)*	•	•	•
• Driver & Front Passenger Seatbelt Pretensioners/Force Limiters	•	•	•
• Engine Immobilizer	•	•	•
• Anti-Theft Deterrent System	•	•	•
• Traction Control System (TRAC)	•	•	•
• Door Ajar, Low Fuel & Washer Fluid Warning	•	•	•
<b>EXTERIOR:</b>			
• Power Tilt & Slide Sunroof with Sunshade	•	•	•
• Power Retractable Convertible Roof	•	•	•
• Colour-Keyed Rear Spoiler, Bodyside Mouldings, Door Handles & Bumpers	•	•	•
• Colour-Keyed Front & Rear Splash Guards	•	•	•
• Colour-Keyed Power Remote Controlled Heated Mirrors	•	•	•
• Colour-Keyed Side Skirts, Rear Splash Guards	•	•	•
• Aero Style Halogen Headlamps	•	•	•
• Fog Lamps	•	•	•
• Variable Intermittent Wipers	•	•	•
• Aluminum Alloy Wheels & Wheel Locks	•	•	•

SOLARA	SE	SLE V6	SLE V6 CONVERT.
<b>Additional Accessories:</b>			
• Block Heater	◊	◊	◊
• Cargo Net	◊	◊	◊
• Hood Mask, Hood Deflector	◊	◊	◊
• Licence Plate Cover	◊	◊	◊
• Padded Centre Armrest	◊	◊	◊
• Security System	◊	◊	◊
• Moonroof Wind Deflector	◊	◊	◊
• Trunk Mat	◊	◊	◊

## SOLARA SPECIFICATIONS 2003

SOLARA	SE	SLE V6	SLE V6 CONVERT.
<b>MECHANICAL</b>			
<b>Engine</b> 5S-FE	• 2.4 Litre (2362 cc), 4-Cylinder, DOHC, 16-Valve, VVT-i, Sequential Multiport Electronic Fuel Injection, Balance Shafts	•	•
1MZ-FE	• 3.0 Litre (2995 cc), Aluminum Alloy V6, DOHC, 24-Valve, Sequential Multiport Electronic Fuel Injection	•	•
<b>Compression Ratio</b>	• 9.6:1 • 10.5:1	•	•
<b>Horsepower (kW)</b>	• 157 (117) @ 5600 rpm • 200 (149) @ 5200 rpm	•	•
<b>Torque (N.m.)</b>	• 161 (218) lb. ft. @ 4000 rpm • 214 (290) lb. ft. @ 4400 rpm	•	•
<b>Suspension</b>	• <b>Front:</b> Independent, Gas-Filled MacPherson Struts, Coil Springs & Stabilizer Bar • <b>Rear:</b> Independent, Dual Link MacPherson Strut Type, Coil Springs & Stabilizer Bar	•	•
<b>Drivetrain</b>	• Front Engine/Front-Wheel Drive	•	•
<b>Transmission</b>	• 4-Speed Electronically Controlled Overdrive Automatic with Lock-Up Torque Converter & Overdrive Cancel Switch	•	•
<b>Brakes</b>	• Power-Assisted Front Ventilated Discs/Rear Drums • Power-Assisted 4-Wheel Discs (Front Ventilated Discs) • Traction Control System (TRAC) • ABS (Antilock Braking System)	•	•
<b>Steering</b>	• Rack & Pinion with Variable Power Assist	•	•
<b>Tires</b>	• P205/65R15 All-Season Radials, Full-Size Spare • P205/60R16 All-Season Radials, Full-Size Spare	•	•
<b>DIMENSIONS mm (in.)</b>			
<b>Length</b>	4825 (190.0)	•	•
<b>Width</b>	1805 (71.1)	•	•
<b>Height (Unloaded)</b>	SE/SLE V6 1400 (55.1) SLE V6 Convertible 1425 (56.1)	•	•
<b>Wheelbase</b>	2670 (105.1)	•	•
<b>Tread</b>	<b>Front:</b> 1545 (60.8) <b>Rear:</b> 1520 (59.8)	•	•
<b>Seating Capacity</b>	5 4	•	•
<b>Headroom</b>	<b>Front:</b> 973 (38.3) <b>Rear:</b> 921 (36.2) <b>Front:</b> 943 (37.1) <b>Rear:</b> 919 (36.1) <b>Front:</b> 987 (38.9) <b>Rear:</b> 959 (37.8)	•	•
<b>Legroom</b>	<b>Front:</b> 1102 (43.4) <b>Rear:</b> 893 (35.1)	•	•
<b>Shoulder Room</b>	<b>Front:</b> 1405 (55.3) <b>Rear:</b> 1344 (52.9) <b>Front:</b> 1405 (55.3) <b>Rear:</b> 1209 (47.6)	•	•

- - Standard    \*\*These estimates are based on the Government of Canada's approved criteria and testing methods. The actual fuel consumption of this vehicle may vary. Refer to the Government of Canada publication – EnerGuide Fuel Consumption Guide.    † Based on 2001 model year data.  
Information correct at time of printing. Subject to change without notice.

SOLARA	SE	SLE V6	SLE V6 CONVERT.
<b>CURB WEIGHT kg (lbs.)</b>			
4-Cylinder 4-Speed Automatic	1423 (3130)	•	•
V6 4-Speed Automatic	1480 (3263)	•	•
V6 4-Speed Automatic (Convert.)	1580 (3484)	•	•
<b>FUEL CAPACITY litres (gal.)</b>			
	70.0 (15.4)	•	•
<b>CARGO CAPACITY m<sup>3</sup> (cu. ft.)</b>			
	.391 (13.8) .249 (8.8)	•	•
<b>FUEL CONSUMPTION RATING** L / 100 km mpg</b>			
4-Cylinder 4-Speed Automatic	10.1/6.9	28/41	•
V6 4-Speed Automatic†	11.9/7.8	24/36	•
V6 4-Speed Automatic (Convert.)†	12.5/8.2	23/34	•



**TAKE NOTE:**

\***Airbag Notice:** The 2003 Solara features a driver & front passenger airbag Supplemental Restraint System (SRS) which activates only in a front-end collision of sufficient magnitude to inflate the bags. In moderate frontal collisions, the airbags may not inflate, in a rear or side collision the airbags are designed not to inflate, so the primary protection is provided by the lap and shoulder belt system. The 2003 Solara SLE V6 and SLE V6 Convertible also feature a Side-Impact airbag Supplemental Restraint System (SRS) which activates only in a side-impact collision of sufficient magnitude to inflate the bags.  
*Seatbelts must be worn at all times by all occupants.*

**Toyota Canada Inc.** Every effort has been made to ensure the specifications and equipment shown are accurate based on information available at time of printing. In some cases, certain changes in standard equipment, options or product delays may occur which would not be reflected in this brochure. Toyota Canada Inc. reserves the right to make these changes without notice or obligation.  
The Toyota website [www.toyota.ca](http://www.toyota.ca) – or your Toyota Dealer is your best source for up-to-date information.

**SOLARA COLOURS:**



051 Diamond White Pearl/  
Ivory<sup>12</sup> or Grey<sup>4</sup> Interior



1C8 Titanium Metallic/  
Grey<sup>3</sup> Interior



209 Black Sand Pearl/  
Ivory<sup>2</sup> or Grey<sup>3</sup> Interior



3N5 Red Flame Metallic/  
Ivory<sup>12</sup> or Grey<sup>3</sup> Interior



405 Sparkling Gold Metallic/  
Ivory<sup>12</sup> Interior

<sup>1</sup> Ivory Cloth Fabric on SE Coupe  
<sup>2</sup> Ivory Leather on SLE V6 Coupe & Convertible  
<sup>3</sup> Grey Cloth Fabric on SE Coupe  
<sup>4</sup> Grey Leather on SLE V6 Coupe & Convertible

**VEHICLE COVERAGE**    *New Vehicle Warranty Summary*    *No Deductibles – No Transfer Fees*

**Comprehensive Coverage - 3 years or 60,000 km**

This warranty includes 24 hour Roadside Assistance and other benefits, as well as coverage of repairs on any part of the vehicle that is defective in material or workmanship under normal use and maintenance. Different warranties apply to original tires.

**Powertrain Components - 5 years or 100,000 km**

This warranty covers repairs to powertrain components that are defective in material or workmanship under normal use and maintenance.

**Major Emission Control Components -**

**8 years or 130,000 km**  
This warranty covers repairs to specified major emission components that are defective in material or workmanship under normal use and maintenance.

**Corrosion Perforation - 5 years unlimited distance**

Any sheet metal found, under normal use, to have developed a perforation from corrosion due to defects in material or workmanship.



CAA\* Pyramid Award  
Voted best for owner satisfaction, reliability and low repair frequency and cost, Toyota has earned this award 16 times in the last 20 years.



With Extra Care Protection, your new Toyota has inflation protected coverage from mechanical failures, to road emergencies, and much more. It is the affordable and cost effective way to guarantee your peace of mind and to protect your investment whether you buy or lease. ECP is not a warranty... it's much more! It can provide you and your new Toyota with coverage such as Towing, Emergency Road Service, Rental Assistance, Tire Road Hazard Protection and also includes the 3 first factory recommended lubrication intervals. ECP Plans can cover you on up to 17 major mechanical component groups after the manufacturer's warranty expires. Please consult your Toyota Dealer for further details on this very valuable and affordable option.



**TOYOTA EXPERIENCE** The part you can't replace making the experience of owning a Toyota both satisfying and rewarding. The satisfaction comes from knowing that highly skilled, Toyota-trained technicians using Toyota Genuine Parts are maintaining your vehicle at truly fair and competitive prices. The reward comes in the form of years of trouble-free driving in a vehicle that will hold its value remarkably well.  
*"That new Toyota feeling - we help you keep it."*



THE EASY AND AFFORDABLE WAY TO FINANCE OR LEASE YOUR TOYOTA.

Toyota Financial Services offers quality leasing and financing for your Toyota. We believe that your toughest decision should be choosing which Toyota model you want, so we've made purchasing and leasing your Toyota easy. You can count on us to provide the same superior level of service and quality that you know and expect from Toyota.  
*Why choose Toyota Financial Services?*

- Competitive interest rates
- Flexible terms of up to 60 months
- Convenient, one stop shopping available at all Toyota Dealerships
- Web services
- Save time and get pre-approved on-line before you shop
- Check out our competitive rates on-line. *You won't be disappointed!*

Come visit us at [www.toyotafinancialservices.ca](http://www.toyotafinancialservices.ca) or call us at 1-888-TOYOTA-8.



Toyota Canada and its Dealers are proud sponsors of Canadian Special Olympics.



# SOLARA 03



ECHO



PRIUS



MATRIX



COROLLA



CAMRY



SOLARA



AVALON



CELICA



SIENNA



TACOMA



TUNDRA



RAV4



4RUNNER



HIGHLANDER



SEQUOIA



1-888-TOYOTA-8  www.toyota.ca



Toyota recognizes its duty to safeguard the environment. To support this concern, our brochure is printed on recycled paper with vegetable based inks to be fully recyclable.  
PRINTED IN CANADA 20M C0002-0513E-50