

VOLVO
for life



VOLVO
S60





THE VOLVO S60.
IT'S A DIRECTION. IT'S A PROMISE. IT'S A PASSION.
DRIVE IT AND YOU WILL UNDERSTAND.

VOLVO S60	2
DESIGNED EMOTION	4
COMFORT. LUXURY. EXHILARATION.	6
ENGINEERED EMOTION	10
SAFETY – OUR FIRST PRIORITY	14
CARE FOR THE ENVIRONMENT	18
STANDARD FEATURES AND TECHNICAL SPECIFICATIONS	20
PERSONAL SECURITY	22
THE EXTRAS	23
INTERIOR SELECTIONS	24
ACCESSORIES	28
EXTERIOR CHOICES AND COLOURS	29
A PLEASURE TO OWN	31





VOLVO S60

FOR SOME, IT'S ONE OF THE WORLD'S MOST SPIRITED DRIVING EXPERIENCES. OTHERS SIMPLY ENJOY THE SUPERIOR FEEL OF TOTAL CONTROL AND REFINED LUXURY. EVERYONE OUTSIDE THE CAR WILL SAVOUR THE AWARD WINNING DESIGN. BASICALLY, IT ALL COMES DOWN TO THE ESSENCE OF A GENUINE EUROPEAN SPORTS SEDAN, A FACT THAT WILL BE EVEN MORE OBVIOUS ONCE YOU TAKE TO THE ROAD AND EXPERIENCE THE POWER. THE VIGOROUS AND WELL-BALANCED CHASSIS ALLOWS YOU TO ENJOY EVERY CURVE AND JUST KNOWING THAT YOU'RE SURROUNDED BY VOLVO'S LEGENDARY SAFETY, WITH SPACE FOR YOUR LOVED ONES (AND THEIR LUGGAGE), SIMPLY ADDS TO THE PLEASURE. AFTER ALL, IT IS A VOLVO.



S60 T5 with optional 17" alloy wheels





DESIGNED EMOTION

THE POWERFUL STANCE. A MUSCULAR YET SLEEK BODY. IT'S A FOUR-DOOR SPORTS SEDAN, BUT MOVES YOU WITH THE LOOKS OF A COUPE. AGILITY IS EMPHASIZED BY GENUINE CAB FORWARD ARCHITECTURE TO CONNOTE THE SPIRIT OF A JET FIGHTER, AERODYNAMICALLY SCULPTED TO KNIFE THROUGH THE AIR WITH A .28 DRAG COEFFICIENT. A DISTINCTIVE FRONT AND A V-SHAPED HOOD WITH LINES FLOWING OVER THE BROAD SHOULDERS – NO DOUBT IT'S A VOLVO. MOST OF ALL: YOU CAN REST ASSURED THAT WHAT'S INSIDE DELIVERS WHAT THE OUTSIDE PROMISES.

S60 T5 with optional 17" alloy wheels



COMFORT. LUXURY. EXHILARATION

YOU FEEL THE CONNECTION THE MOMENT YOU TAKE YOUR PLACE BEHIND THE WHEEL. THE ORTHOPEDICALLY DESIGNED DRIVER'S SEAT IS ONE OF THE MOST COMFORTABLE IN THE AUTOMOTIVE WORLD. A QUICK GLANCE AT THE INSTRUMENTS GIVES YOU ALL THE DRIVING INFORMATION YOU NEED. ALL COCKPIT DETAILS ARE METICULOUSLY ENGINEERED TO GIVE YOU CONTROL AND INSTANTANEOUS FEEDBACK. THE STEERING WHEEL AND POWER ADJUSTABLE DRIVER'S SEAT EASILY ADJUST TO YOUR EXACT PREFERENCES. PASSION STARTS HERE.



APPEALING ACCESSORIES

Volvo invites you to personalize the interior of your S60. There's sumptuous leather for the seats, steering wheel and parking brake lever. You can add a power passenger seat, the Volvo Navigation System, or even the reverse parking assistance* to alert you to objects

behind the car when backing up. And with Volvo's most sophisticated audio system, with 13 Premium Sound speakers, a 325 W amplifier and Dolby Pro-Logic®, you will enjoy a listening experience far beyond the ordinary.

*Retailer installed accessory





S60 shown with wood effect trim, standard on S60 T5 and optional on S60 2.4T/AWD

SPORTINESS, CONSIDERATION AND PRACTICAL INTELLIGENCE

The cabin is among the most spacious in its class. You are surrounded by harmonious textures and colours. All the seats offer superior comfort and feature head restraints and three-point seat belts with pre-tensioners. The rear head restraints fold at the touch of a button to increase rearward vision when reversing. The Dual Zone Electronic Climate Control system (ECC) maintains an ideal cabin temperature and can be set individually for the driver and passenger sides. A built-in cabin air filter prevents dust, pollen and fumes from entering the cabin. An Interior Air Quality System (IAQS), ensures that the air you breathe inside the car is actually cleaner than the air outside. The airiness of the cabin is further enhanced by the power glass optional moonroof.* And when you need extra load capacity, simply fold down the split rear seat or both the rear and front passenger seats.

*Optional 2.4



Smart and considerate details that emphasize comfort – whether you are behind the wheel or just along for the ride.



Adjustable air vents for the rear-seat passengers enhance comfort and help keep mist off the side windows.



Your jacket is within easy reach without obscuring your vision.

ENGINEERED EMOTION

DRIVING A VOLVO S60 MAY EASILY TURN OUT TO BE A LONG-LASTING, LOVE AFFAIR. THE BALANCE, THE STABILITY, THE RESPONSE – THE CAR REACTS IMMEDIATELY TO YOUR EVERY COMMAND WITH NO UNEXPECTED SURPRISES. AND THE FIVE-CYLINDER 247-HP T5 TURBO ENGINE IS MORE THAN WILLING TO SET THE PACE. SO EXPECT WORLD-CLASS ON-ROAD ENTERTAINMENT – DAY AFTER DAY, SMILE AFTER SMILE.



AGILE CHASSIS

The multi-link rear suspension maintains nearly constant wheel angles and track width. It provides you with both excellent riding comfort and well-balanced, consistent handling.



POWERFUL BRAKE SYSTEM

An anti-lock braking system featuring EBD (Electronic Brake Distribution) is always at your disposal. Braking power is automatically distributed between the front and rear wheels for quick, sure stops regardless of the car's load. And if you choose the DSTC (Dynamic Stability and Traction Control) anti-skid system, EBA (Emergency Brake Assistance) helps shorten the braking distance in emergency situations.



GEARED TO SPORT

Power is in your hands. The smooth and distinct five-speed manual gearbox offers you the most active driving experience. Or choose the refined Geartronic five-speed adaptive automatic transmission, which also allows manual shifting when you're in the mood.

The low centre of gravity and weight distribution contribute to stable road behavior. Add an extremely torsionally rigid body and one of the most refined chassis in the automotive world – and the result is exceptionally good roadholding.

Front-wheel drive and independent front wheel suspension have been combined with a sophisticated multi-link rear suspension. The result is stable and predictable roadholding and – not least – first-class riding comfort.





VOLVO S60 AWD

The Volvo S60 AWD adds yet another dimension to your driving experience. It offers one of the most advanced all wheel drive systems available today. It's controlled by an electronic management system that constantly monitors the speed of the wheels, throttle position, engine torque, engine speed, the DSTC* system and the brakes, helping to ensure maximum control at all times. The AWD system responds extremely quickly, making it possible to balance understeering and oversteering tendencies with exceptional precision.

For example, during rapid acceleration or fast cornering, power is smoothly distributed between the front and rear wheels in a fraction of a second to give you maximum driving

stability. Behind the wheel, you won't even be aware that the AWD system is at work – you'll simply enjoy that superb feeling of total control.

Making your way on slippery road surfaces is no problem. The AWD system's short reaction time provides immediate power to the wheels that need it so you easily get started and maintain control even under difficult conditions. At low speeds, Volvo's anti-spin system, TRACS, ensures that the wheel with the best traction gets the most power.

The engine is a newly-developed five-cylinder light-pressure turbo engine producing 208 hp, and 236 ft./lbs. of torque.

*Optional

S60 AWD shown with retailer installed fog lights



Normally, the front wheels get nearly all of the engine's power.



If the front wheels show any tendency to spin, the AWD system responds instantly by redistributing power for maximum stability.



If one or both wheels spin on one side, more power goes instantly to the ones with the best grip.



When braking, the car disengages drive to the rear wheels the instant you touch the brake pedal, thereby maximizing control and roadholding.



When starting off, only one wheel needs to have traction with the road.



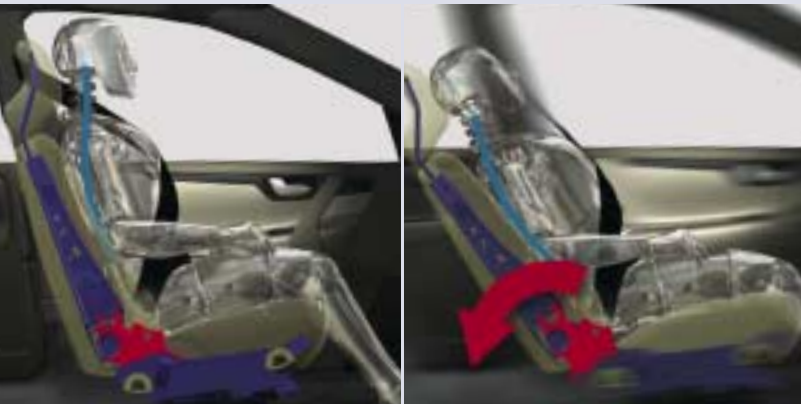
"CARS ARE DRIVEN BY PEOPLE. THE GUIDING PRINCIPLE
BEHIND EVERYTHING WE MAKE AT VOLVO, THEREFORE,
IS – AND MUST REMAIN – SAFETY."

ASSAR GABRIELSSON AND GUSTAF LARSON,
THE FOUNDERS OF VOLVO.



SAFETY – OUR FIRST PRIORITY

VOLVO. SAFETY. THE WORDS ARE NEARLY SYNONYMOUS, AS WELL THEY SHOULD BE, BECAUSE SAFETY IS THE VERY ESSENCE OF WHO WE ARE AND WHAT WE DO. FROM SOPHISTICATED SYSTEMS THAT HELP YOU AVOID ACCIDENTS TO THOSE THAT HELP TO MINIMIZE INJURIES SHOULD ONE OCCUR, VOLVO IS COMMITTED TO PROTECTING YOU, YOUR LOVED ONES, AND THOSE WITH WHOM YOU SHARE THE ROAD OF LIFE.



WHIPLASH PROTECTION SEATING SYSTEM

Rear-end collisions can result in serious neck injuries, even at low speeds. Volvo's Whiplash Protection System (WHIPS) is built into the front seats. If the car is struck from behind at sufficient speed, the system helps absorb the force and significantly reduces stress to the neck and spine.



SIDE-IMPACT PROTECTION SYSTEM

In 25 percent of all major collisions, the impact is from the side. Volvo's patented Side-Impact Protection System (SIPS) helps reduce the risk of serious injury. Side members, roof pillars, the roof, doors, and cross-members in the floor and dashboard are specially reinforced. The system works in conjunction with side airbags fitted in the front seats and IC – inflatable head-protection curtains concealed in the headliners along both sides of the car.

In a Volvo S60, safety is built in from the very start. An advanced chassis and powerful brakes help you maintain control in all situations. Active stability systems increase the margins of safety still further, for instance if you are driving on slippery roads or are forced to take sudden evasive action. The STC (Stability and Traction Control) anti-spin system ensures

that the driven wheels get just the right amount of power so that they retain a firm grip on the road. If the vehicle shows any tendency to start skidding, DSTC* (Dynamic Stability and Traction Control) instantly applies the brakes to one or more wheels to help you stabilize the vehicle and regain control.

*Optional

VOLVO SAFETY SYSTEMS

AT VOLVO, WE BELIEVE THAT IT'S THE WHOLE RATHER THAN THE PARTS THAT DETERMINES HOW SAFE A CAR IS. THE S60 IS VERY MUCH THE PRODUCT OF THIS BELIEF – EVERYTHING WORKS TOGETHER HARMONIOUSLY TO HELP KEEP YOU OUT OF HARM'S WAY.

DUAL-STAGE AIRBAGS

These latest-generation "smart" airbags sense collision force and adjust inflation accordingly.

COLLAPSIBLE THREE-STAGE STEERING COLUMN

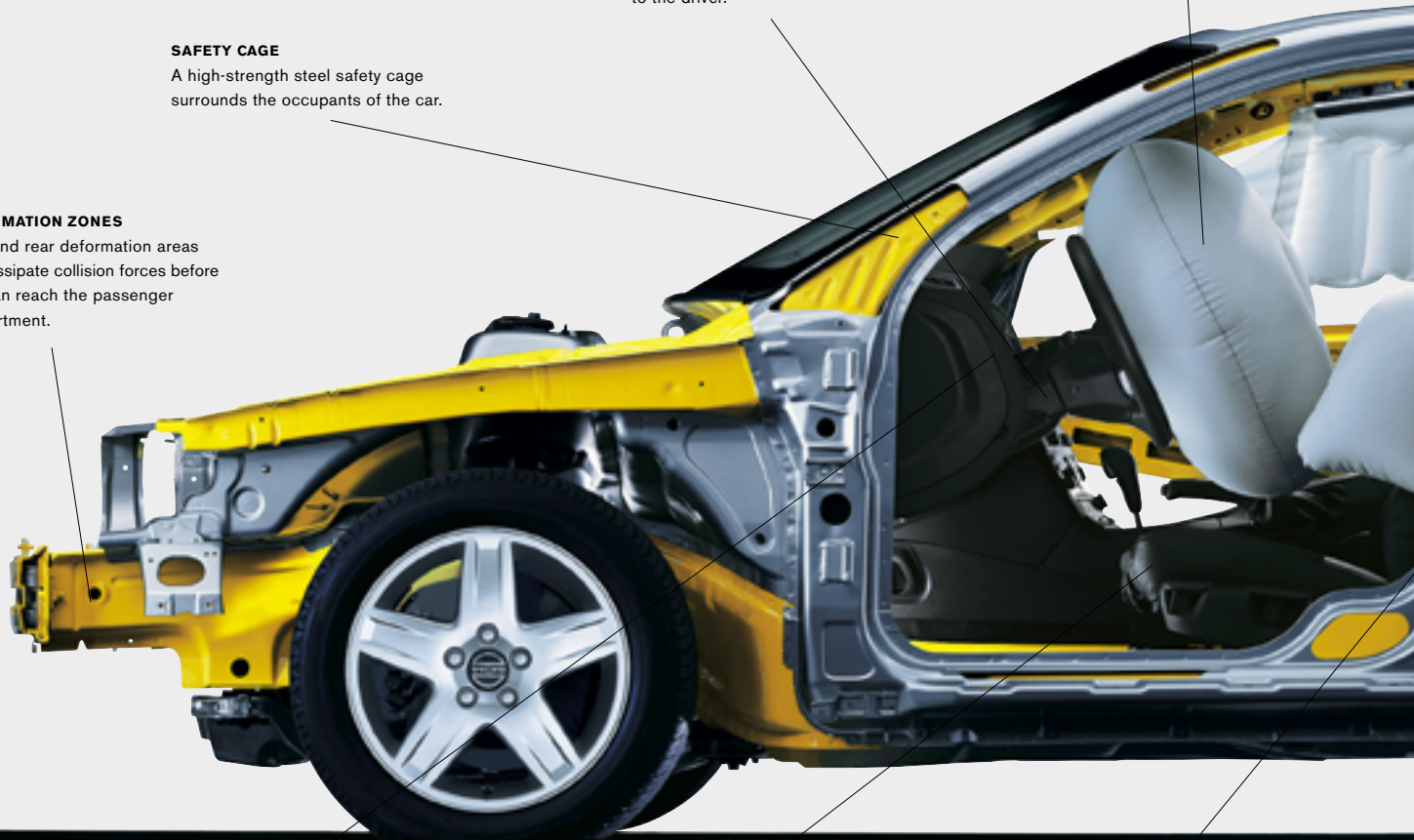
In the event of a frontal collision, the steering column is designed to collapse and help prevent injuries to the driver.

SAFETY CAGE

A high-strength steel safety cage surrounds the occupants of the car.

DEFORMATION ZONES

Front and rear deformation areas help dissipate collision forces before they can reach the passenger compartment.



ENERGY-ABSORBING INTERIOR

All the panels and the sides of the doors are padded with energy-absorbing materials to help reduce the risk of injury to the car's occupants.

ANTI-SUBMARINING SEATS

Front and rear seats are shaped to help keep occupants from sliding under and out of their seat belts during a collision.

WHIPLASH PROTECTION SYSTEM (WHIPS)

If the vehicle is struck from behind, this front-seat system is designed to reduce the violent transfer of energy that often results in serious neck and back trauma.

SIDE-IMPACT AIRBAGS

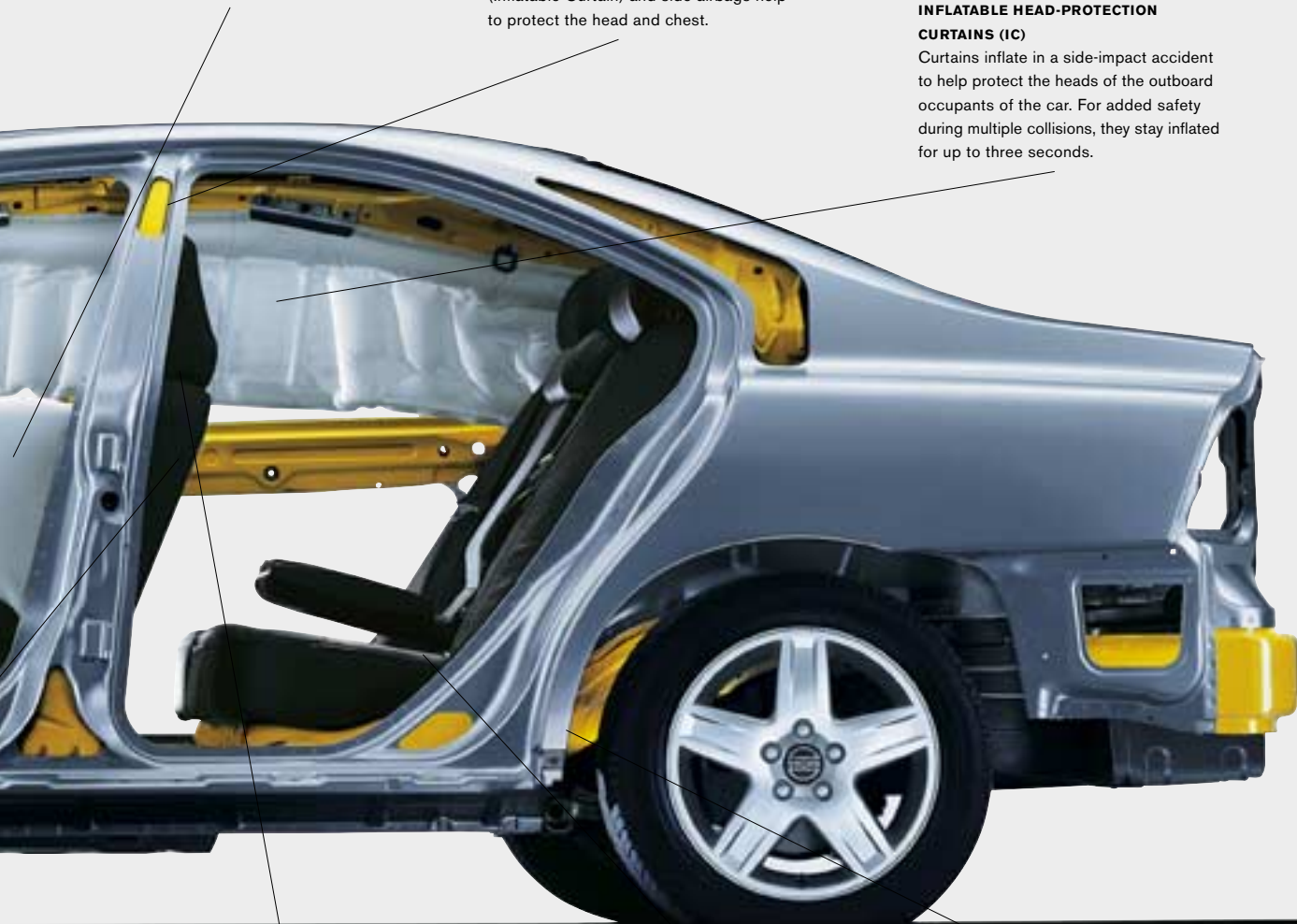
Side airbags offer chest protection. They are fitted in the outer edge of the front seat backrests, not in the doors, so that they are always by your side.

SIDE-IMPACT PROTECTION (SIPS)

Volvo's unique side-impact protection system uses a large part of the car's body to absorb the force of an impact. The IC (Inflatable Curtain) and side airbags help to protect the head and chest.

INFLATABLE HEAD-PROTECTION CURTAINS (IC)

Curtains inflate in a side-impact accident to help protect the heads of the outboard occupants of the car. For added safety during multiple collisions, they stay inflated for up to three seconds.



SEAT BELTS WITH PRE-TENSIONERS

All five seats have head restraints and three-point seat belts with pre-tensioners. In a collision, the seat belts are pulled taut to help keep passengers properly positioned. The front seat belts then slacken slightly so that the occupant is cushioned by the airbag in a controlled way.

ISOFIX COMPLIANT

This attachment system ensures quick and correct installation and removal of safety seats for children in the rear seat's outboard positions.

PROTECTED FUEL TANK

The fuel tank is strategically placed in front of the rear axle, which helps protect it in the event of a rear-end collision.

CARE FOR THE ENVIRONMENT

CARING FOR THE ENVIRONMENT IS IMPORTANT TO YOU AND TO VOLVO. REST ASSURED THAT THE LATEST ENGINE TECHNOLOGY AND ANTI-POLLUTION ENGINEERING HAVE BEEN BROUGHT TOGETHER TO SET HIGH ENVIRONMENTAL STANDARDS – FOR YOU, YOUR FAMILY, AND FOR THE GOOD OF EVERYONE.

FUEL ECONOMY AND EMISSIONS

The engines are crafted of lightweight aluminum and feature Volvo's latest low-friction technology for good fuel efficiency while providing excellent overall performance. Continuously variable valve timing (CVVT) and three-way catalytic converters allow the S60 to meet or exceed stringent Ultra Low Emission Vehicle (ULEV) standards.

RECYCLABLE

Nearly all of the sheet metal and other metals in the S60 can be recycled. In fact, about 85 percent of the vehicle's total weight is recyclable.

INSIDE AIR

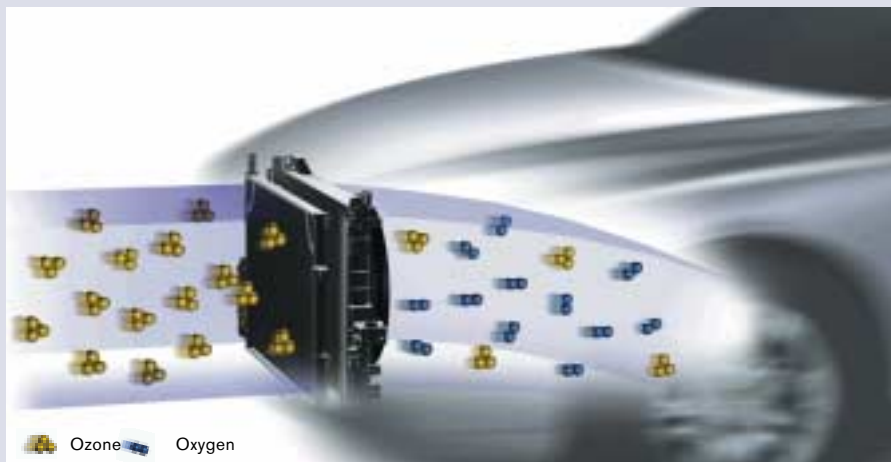
The Interior Air Quality System (IAQS) removes pollen and unpleasant odors from incoming air. If pollutants are detected outside the vehicle, interior air is temporarily recirculated to maintain air quality.

CERTIFIED MATERIALS

All interior fabrics and leather have been rigorously tested to ensure that they are free from hazardous and allergenic substances. Leathers are tanned using natural plant materials.

CLEANS AS YOU DRIVE

Ozone, so important to the planet's health, is actually a pollutant when found at ground level. The radiator of the S60 has a special coating, PremAir®, which converts up to 75 percent of the ozone it encounters into oxygen – so you actually help clean the air when you drive. In addition, the S60 is finished with water-based paints. This results in clean air both inside and outside the factory.



PremAir® helps reduce ground level ozone as you drive – an important part of Volvo's global environmental commitment.





STANDARD FEATURES (2.4)

SAFETY

- Anti-submarine seats
- Daytime running lights
- Dual-stage front airbags for driver and front passenger
- Illuminated side marker lights/turn signal indicators
- Inflatable side curtain (IC)
- ISOFIX baby/child seat attachment
- Overhead-mounted seat belt reminder lights
- Rear door child-safety locks
- Rear fog light w/auto-off
- Approach and home safe lighting
- Seat belts: five, three-point inertia-reel belts with pre-tensioners; front belts include automatic height adjustment
- Security system with siren and battery back-up
- Side impact airbags (SIPS bags II™)
- Side Impact Protection System (SIPS)
- Stability and Traction Control (STC)
- Top-tether child seat anchorage capability
- Whiplash Protection Seating System (WHIPS)

EXTERIOR

- 168-hp engine/five-speed manual transmission
- Front wheel drive
- 6.5" x 15" alloy MUSCA
- Central power door locks w/ remote keyless entry
- Outside temperature gauge
- Pollen filter for passenger compartment
- Power, heated door-mounted rearview mirrors
- PremAir® treated radiator
- 2-speed windshield wipers w/ variable intermittent cycle
- Headlight wiper/washer

INTERIOR

- Heated seats
- Cruise control
- Cup holders
- Driver's seat with tilt, recline, adjustable lumbar support
- Dual-Zone electronic climate control
- Electric folding rear head restraints
- Five padded head restraints
- Four reading lamps
- Front center armrest
- Front door-panel storage pockets
- Front seat-back storage pockets
- Illuminated vanity mirrors
- Illuminated, lockable glove box
- Immobilizer, encrypted ignition key
- Interior cabin light delay
- Luggage/cargo area lights
- Power trunk lock/unlock
- Power windows
- Rear cup holders
- Rear seat ventilation outlets on B-pillar
- Rear window defroster
- 60/40 split folding rear seats
- Tilt/telescopic steering wheel
- Illuminated cruise and audio controls in steering wheel
- Two entry lights (in front door foot wells)

AUDIO

- HU-613 audio system, RDS radio, single CD, cassette, built-in 100 W amplifier, six speakers, dual diversity antenna

2.4T INCLUDES 2.4 STANDARD FEATURES AND THE FOLLOWING

- 197 hp turbocharged engine
- 5-speed automatic adaptive transmission
- Power driver's seat with memory function for driver's seat and door-mounted mirrors
- Leather trimmed gearshift knob
- 6.5" x 16" alloy URSA

2.5T AWD INCLUDES STANDARD FEATURES PLUS 2.4T FEATURES AND THE FOLLOWING

- 208 hp turbocharged engine
- Electronically-controlled All-Wheel-Drive system, four-wheel traction control
- 6.5" x 16" alloy ORBIT
- 5-speed Geartronic transmission

T5 INCLUDES STANDARD FEATURES PLUS 2.4T FEATURES AND THE FOLLOWING

- 247 hp turbocharged engine
- 5-speed manual transmission with sports shift
- Front fog lights
- HU-803 audio system, RDS radio, in dash 4-CD, Dolby Pro-logic®, 200 W amplifier, 11 speakers, dual diversity antenna
- Leather trimmed steering wheel, gearshift, parking brake handle
- Aluminum trim w/ graphite interior
- Wood effect trim w/ taupe interior
- Leather surfaced sport seat
- Power seats for driver and passenger (memory function for driver's seat and door-mounted mirrors)
- Homelink
- Auto-dim rearview mirror
- 7" x 16" alloy SIRIUS

TECHNICAL SPECIFICATIONS

ENGINES

VOLVO S60 2.4 (168 HP)

- 2.4 litre, five-cylinder engine producing 168 hp @ 5900 rpm, torque 170 ft.lbs. @ 4500 rpm
- Five-speed manual transmission or five-speed adaptive automatic
- Fuel economy (L/100km, manual/automatic): highway 7.3/7.0, city 10.8/10.7

VOLVO S60 2.4T (197 HP)

- 2.4 litre, five-cylinder light-pressure turbo engine producing 197 hp @ 6000 rpm, torque 210 ft.lbs. @ 1800 – 5000 rpm
- Five-speed adaptive automatic transmission or five-speed Geartronic
- Fuel economy (L/100km): highway 7.7, city 11.4

VOLVO S60 2.5T AWD (208 HP)

- 2.5 litre, five-cylinder light-pressure turbo engine producing 208 hp @ 5000 rpm, torque 236 ft.lbs. @ 1500 – 4500 rpm
- Five-speed adaptive automatic transmission
- Fuel economy (L/100km): highway 8.6, city 12.7

VOLVO S60 T5 (247 HP)

- 2.3 litre, five-cylinder high-pressure turbo engine producing 247 hp @ 5200 rpm, torque 243 ft.lbs. @ 2400 – 5200 rpm
- Five-speed manual transmission or five-speed Geartronic transmission
- Fuel economy (L/100km, manual/automatic): highway 8.0/7.8, city 11.5/11.6

SUSPENSION

- **Front:** MacPherson strut, coil springs, hydraulic shock absorbers, 23.5 mm stabilizer bar
- **Rear:** Multilink independent with coil springs, hydraulic shock absorbers, 19 mm stabilizer bar, cast aluminum subframe
- T5 Sport Chassis: Recalibrated front/rear shock absorbers, 24 mm front/21 mm rear stabilizer bars (Opt T5 Sport Package)

STEERING

- Power assisted rack and pinion 2.8 turns lock-to-lock

BRAKES

- Power-assisted anti-lock disc brakes (ABS), ventilated at the front. Electronic Brake Distribution (EBD) between front and rear brakes. Emergency Brake Assistance (EBA) in combination with optional DSTC.

EXTERIOR DIMENSIONS AND WEIGHTS

Height	1428 mm
Length	4576 mm
Track, front/rear	1551 mm/1548 mm
Wheelbase	2715 mm
Width	1804 mm
Turning circle, curb to curb	11.8 m
Curb weight	1440 kg

INTERIOR DIMENSIONS

Headroom w/moonroof front/rear	987/962 mm
Hiproom front/rear	1397/1387 mm
Legroom front/rear	1082/847 mm
Shoulder room front/rear	1427/1409 mm

CARGO CAPACITY

Rear seat up	.39 cu.metres
Rear seat folded	1.03 cu.metres

GENERAL SPECIFICATIONS

Fuel tank capacity	70 litres
Drag coefficient	0.28
Towing capacity	1500 kg





S60 T5 with Sport Package

PERSONAL SECURITY

AT VOLVO, PROVIDING FOR YOUR PERSONAL SAFETY IS A NATURAL EXTENSION OF OUR DEVOTION TO YOUR DRIVING SAFETY. AND SO, A NUMBER OF CRITICAL FEATURES HAVE BEEN ADDED TO THE S60 TO HELP YOU AVOID THREATENING SITUATIONS.

The S60 expands the scope of personal protection. Approach and Home Safe lighting with ground lighting in outer side view mirrors illuminates the area around the car and allows greater safety when approaching or departing the vehicle. An electronic immobilizer and door locks that withstand most break-in attempts help protect against theft. A security system with sensors in the doors, hood and trunk activate an alarm if someone should ever try to break into the vehicle. And in the event of trouble – press the panic button in the remote control and the alarm is sounded.

For an even higher level of personal safety you can add anti-smash and grab laminated side windows (included in the Security Package) and HomeLink remote garage door opener (included in the Premium Package). Lockable wheel bolts are a simple way deter the theft of your alloy wheels.*



REMOTELY CONTROLLED ALARM WITH PANIC BUTTON (STANDARD)

Uses the same remote control as the central locking system. The alarm is triggered if anybody attempts to open the doors, hood or trunk. In an emergency, you can activate the alarm manually by pressing the panic button on the remote control unit.

*Retailer installed accessory

OPTION PACKAGES

2.4 PREMIUM PACKAGE

Leather trimmed steering wheel
Leather seating surfaces
Leather trimmed shift knob
Power driver's seat
Homelink

PREMIUM PACKAGE 2.4T/AWD

Leather trimmed steering wheel
Leather seating surfaces
Power passenger's seat
Homelink
Wood effect trim
Auto-dim rearview mirror

17" PREMIUM PACKAGE 2.5T AWD

Leather trimmed steering wheel
Leather seating surfaces
Power passenger's seat
Homelink
Wood effect trim
Auto-dim rearview mirror
17" alloy THOR

T5 SPORT PACKAGE

Audio max system
Sport Suspension
Dynamic Stability Traction Control, DSTC
17" alloy THOR

SECURITY PACKAGE

Laminated side glass
Mass movement sensor
Level sensor

FACTORY OPTIONS

Metallic paint
Leather seating surfaces
HU-803 audio system w/ 4-CD W/Dolby
Dynamic Stability Traction Control, DSTC
Geartronic
Navigation system
16" alloy CANAVERAL
17" alloy TETHYS

THE EXTRAS

CUSTOMIZE YOUR VOLVO S60 – YOU DECIDE WHAT IT WILL BE IN THE END. THE SHEER NUMBER OF OPTIONS CAN BE A BIT OVERWHELMING. SO TAKE YOUR TIME, EXPLORE, AND IMAGINE, AND SOON YOU'LL BE BEHIND THE WHEEL OF YOUR INDIVIDUALLY TAILORED S60.



VOLVO NAVIGATION SYSTEM

The Volvo Navigation System can guide you anywhere with precise audio and visual directions. Using the global positioning satellite system, a liquid crystal 6.5-inch display shows your location on a map and plots the best route. Controls are conveniently located on the steering wheel. When not in use, the screen retracts into the dashboard. All map-based information is stored on one single DVD disc.



PREMIUM SOUND AUDIO SYSTEM

Experience a world-class audio system for the truly discerning music-lover. Thirteen Premium Sound speakers and Dolby Pro-Logic® surround system give audiophiles a moving experience, especially when sitting in the front – it's like having your favorite orchestra along for the ride.

- HU-803 in-dash radio with built-in 4-CD changer, Dolby Pro-Logic®, 13 Premium Sound speakers and a separate 300 W Premium Sound amplifier plus 25 W for the center speaker. Remote control from the steering wheel.

INTERIOR SELECTIONS

CHOOSE FROM A NUMBER OF SPECIALLY DESIGNED OPTIONS TO CREATE THE INTERIOR THAT BEST SUITS YOU. THEN ENJOY YOUR CREATION EVERY TIME YOU ENTER YOUR CAR.

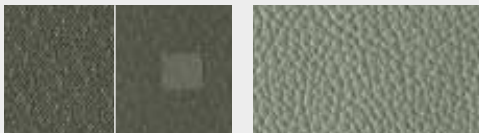


TAUPE INTERIOR

Light Taupe leather seats, optional wood effect trim.



CLASSIC DESIGN SEATS



Cloth
Taupe (9180)

Leather
Light Taupe (9981)



SPORTS DESIGN SEATS



Sport leather
Light Taupe (9A81)



GRAPHITE INTERIOR
 Graphite Sport leather seats, Mesh aluminium trim.



CLASSIC DESIGN SEATS



Cloth
 Graphite (9170)

Leather
 Graphite (9970)



SPORTS DESIGN SEATS



Sport leather
 Graphite (9A70)



Leather trimmed steering wheel



Leather trimmed parking brake lever



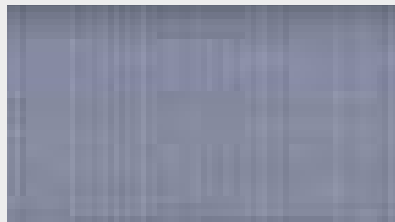
Leather trimmed gear-lever knob,
Graphite (manual)



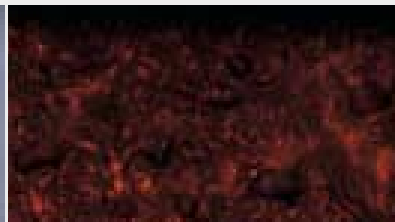
The "sport shifter" gear selector, with leather
trimmed gear lever knob (T5 manual)



Leather trimmed gear-lever knob,
Graphite (automatic)



Mesh aluminium trim



Wood effect trim



VOLVO

S60

S60



ACCESSORIES

VOLVO'S ACCESSORIES HELP YOU MAKE YOUR S60 EVEN MORE SUITED TO YOUR PERSONAL NEEDS. THEY ARE THE ONLY ONES THAT HAVE BEEN TESTED TO MEET VOLVO'S EXACTING SAFETY, QUALITY AND ENVIRONMENTAL REQUIREMENTS. YOU CAN ALSO REST ASSURED THEY'RE A PERFECT MATCH TO THE TECHNOLOGY AND DESIGN OF YOUR VOLVO.

FOR DRIVING FREEDOM

- Navigation system
- Hands free phone system
- Rear parking assistance
- 10 Disk CD Changer
- CD storage compartment
- Audio upgrades
- PC Table
- Reading lamp
- Business bag organizer
- Waste paper bin
- Purse holder
- Coin holder
- Sunglass holder
- Lockable storage box
- Electric cooler box
- Ashtray
- Lockable wheel bolts

FOR PRECIOUS CARGO

- Activity bag
- Mirror-rear child seat
- Sun shades-rear doors
- Sun shade-rear window
- Rear center armrest table
- Padded neck cushion

FOR YOUR INTERIOR

COMFORT

- Luggage compartment mats
- Rubber floor mats
- Tunnel mat
- Trunk floor load securing net
- Side panel net pocket
- Shopping bag holder and bag
- Bumper protective cover
- Leather care kit
- Car cover

FOR YOUR LEISURE

- Roof mounted load carrier
- Bicycle holder
- Bicycle lift holder
- Ski/Snowboard holders
- Canoe/Kayak holder
- Windsurfing board holder
- Roof box
- Load basket carrier
- Load securing straps
- Trailer hitch
- Automatic leveling system
- Fog lights
- Aluminum wheels
- Engine block heater
- Front/rear mud flaps
- First Aid kit
- Winter tires



7.5" x 17" alloy TETHYS
(opt. 2.4T, T5) 235/45/17 tire

EXTERIOR CHOICES AND COLOURS

YOU CAN CUSTOMIZE THE LOOK TO SUIT YOUR TASTE AND TEMPERAMENT. CHOOSE FROM A VARIETY OF COLOURS. SELECT FROM SEVEN DIFFERENT WHEEL DESIGNS. DIAL UP THE ELEGANCE OR THE SPORTINESS UNTIL YOU HAVE JUST THE S60 THAT HARMONIZES WITH YOU.



7.5" x 17" alloy THOR
(opt. 2.5Tawd) 235/45/17 tire



7" x 16" alloy SIRUS
(Std T5) 215/55/16 tire



6.5" x 16" alloy CANAVERAL
(Opt. 2.4) 215/55/16 tire



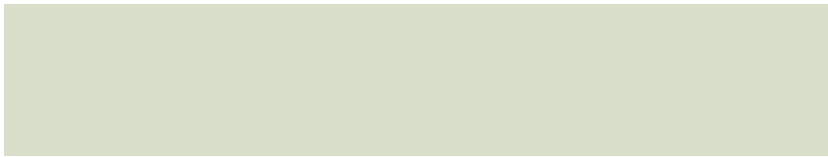
6.5" x 16" alloy ORBIT
(std. AWD) 205/55/16 tire



6.5" x 16" alloy URSA
(std. 2.4T) 205/55/16 tire



6.5" x 15" alloy MUSCA
(std. 2.4) 195/65/15 tire



189 White



426 Silver metallic



446 Ash Gold metallic



449 Platinum Green metallic



450 Cosmos Blue metallic



452 Black Sapphire metallic



454 Ruby Red metallic

PLEASE NOTE: It is not possible to reproduce exact original shades in this brochure. Ask your Volvo retailer to show you samples.

As part of our commitment to the environment, the paper used in this brochure is recycled, and colour choices were printed directly on the page. This eliminates the need for chemically treated colour chips. A small thing perhaps, but then, every little bit helps.



A PLEASURE TO OWN

THE VOLVO S60 PROVIDES A TOTAL OWNERSHIP EXPERIENCE. BUT THE SATISFACTION THAT COMES FROM OWNING A VOLVO INCLUDES MUCH MORE THAN THE VEHICLE ITSELF.

VOLVO NEW-VEHICLE WARRANTY

The warranty provides comprehensive coverage for four years/80,000 km. Additional warranties provide coverage for corrosion protection, seat belts, airbags, the supplemental restraint system, emission systems, spare parts replacement, and genuine Volvo accessories. Consult the warranty information booklet for details.

VOLVO ON CALL

A minor mishap — losing the keys, getting a flat, or perhaps something more disruptive — can happen to anyone at any time. So your new Volvo S60 comes with four years of complimentary emergency roadside service, 24 hours a day, anywhere in North America. Simply call the Volvo Roadside Assistance switchboard and help is on its way.

FINANCING/LEASING

Volvo Car Financial Services Canada (VCFSC) offers competitive, personalized financing plans with low monthly installments, low cash deposit, clearly stated conditions, and professional advice. The long

service life of a Volvo means high residual value. This allows us to offer you very attractive leasing options, tailored to your own situation and requirements.

EXTRA PROTECTION

The Volvo Increased Protection Plan (VIP) is the ultimate support program for total peace of mind. It provides protection against mechanical repairs well beyond the expiration of the vehicle's standard warranty.

These are just a few of the added benefits you'll enjoy as an S60 owner. For further information, ask your Volvo retailer.

WWW.VOLVOCANADA.COM

Specifications, features, and equipment shown in this catalog are based upon the latest information available at the time of publication. Volvo Cars of Canada Ltd reserves the right to make changes at any time, without notice, to colours, specifications, accessories, materials, and models. For additional information, please contact your authorized Volvo retailer.

© 2002 Volvo Cars of Canada Ltd. Printed in USA on recycled paper.

MY03 G CND ENG

VOLVO

for life

