

# 05C Corolla

**TOYOTA**  
the feeling never ends





# 05 Corolla

TIME ISN'T THE ONLY THING THAT FLIES WHEN YOU'RE HAVING FUN.



2

*Above: Corolla Sport shown in Impulse Red.*



*Above: Corolla CE shown in Cactus Mica.*

*Above: Corolla LE shown in Frosted Mink Pearl.*

*Above: Corolla XRS shown in Silver Streak Mica.*

**INTRODUCING THE ALL-NEW COROLLA XRS. IT HAS QUITE A BITE.**

*Corolla XRS*

*shown in Phantom*

*Grey Pearl.*

4



Right: Optitron Electronic Gauges – standard on XRS and LE.

Below: The ergonomically designed Corolla XRS interior.



**THERE'S NO PLACE YOU'D RATHER BE.** Say goodbye to your "I'd rather be..." license plate frame. After all, where else would you want to be but inside Corolla's spacious cabin? Fun for five, air conditioning<sup>1</sup>, 60/40 split folding rear seats<sup>2</sup> and AM/FM CD audio with 6-speakers<sup>3</sup>, making the interior a destination unto itself. The eye-catching, all-new Optitron Electronic Gauges<sup>4</sup> add a touch of refined illumination. Suddenly there's no place you'd rather be.

<sup>1</sup> Optional on CE. <sup>2</sup> CE, Sport and LE models. <sup>3</sup> AM/FM CD with 4-Speakers on CE. <sup>4</sup> XRS and LE models.





**COROLLA XRS** **A WOLF IN COROLLA CLOTHING.** The Corolla XRS has quite a bite. It features a 170 hp VVTL-i engine, 6-speed manual transmission and sport-tuned suspension – all surprisingly engineered to tear into the road. To ensure things don't get too wild, the XRS has 4-wheel disc brakes and a dynamic strut tower brace that helps reduce body roll and increases stability. Inside, you'll find front sport seats, leather-wrapped steering wheel, leather-wrapped shift knob and Optitron Electronic Gauges. If the interior doesn't clue you in that this isn't the status quo Corolla, the exterior will – 16" alloy wheels and colour-keyed grille trim are a dead giveaway. The Corolla XRS: every family needs its black sheep.

*Above: Corolla XRS shown in Silver Streak Mica.*



**THERE ARE NOW FOUR WAYS TO HAVE FUN,** and, in the process, make your accountant proud.

**COROLLA SPORT**

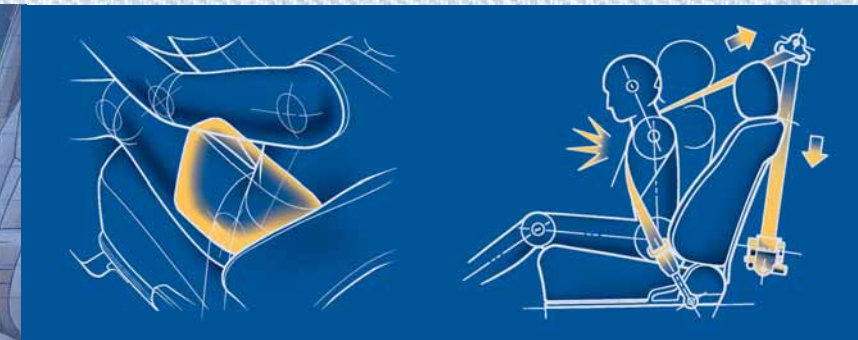
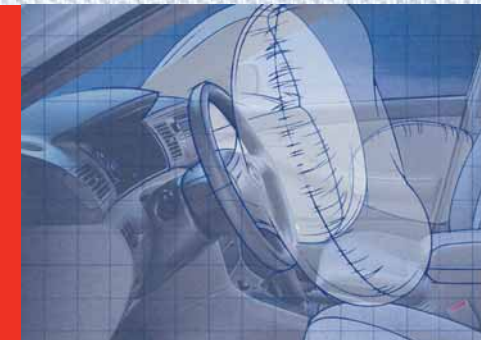
Starting with the new high-performance Corolla XRS (facing page). The sleek and stylish Corolla Sport (above) offers 130 horses ready and willing to take you where the good times are. The Sport also features aerodynamic halogen headlamps, full skirt package, integrated fog lamps and a rear spoiler – proving that fun is in the eye of the beholder.

*Above: Corolla Sport shown in Black Sand Pearl.*



**COROLLA SAFETY FEATURES** • Front & rear energy absorbing crumple zones • Side-impact door beams • Trunk entrapment release • Hood hold-down hooks • Door ajar, low fuel & headlamp on warnings • Antilock Braking System (ABS) on the LE & XRS (optional on Corolla Sport) • Dual stage driver & front passenger airbag Supplemental Restraint System (SRS) • Front passenger airbag status indicator • Energy absorbing steering column • 3-point front

seatbelts with adjustable seatbelt anchors, driver's Emergency Locking Retractor (ELR) & passenger side Automatic/Emergency Locking Retractor (ALR/ELR) • Front seatbelt pre-tensioners with force limiters • 3-point rear seatbelts in all positions with Automatic/Emergency Locking Retractor (ALR/ELR) • Energy absorbing upper interior trim • Adjustable front & rear headrests • Child protector rear door locks



**LOOKING GOOD. BEING SAFE. IT'S NOT AN EITHER /OR.** The 2005 Corolla offers both.



Even to the spirited Corolla, some things are entirely serious. Just beneath its playful personality, you'll find a wealth of safety features with serious intent. For instance, Corolla has dual-stage driver and front passenger airbags that deploy to various levels based on the severity of the impact. The 2005 Corolla is driven by Toyota's powerful VVT-i (Variable Valve Timing with intelligence) engine that optimizes engine efficiency by constantly retarding or advancing intake valve timing depending on conditions and engine speeds – resulting in exceptional low-end torque to get you off the line, mid-range punch for passing situations and clean-burning efficiency throughout the rev range. And for sheer stopping power, Corolla LE and XRS also have a 4-wheel Antilock Braking System (ABS) with Electronic Brake-force Distribution (EBD) – now optional on Corolla Sport. And that's just for starters. So rest assured. Because Corolla is all about putting a smile on your face... and keeping it there. Safety and fun coexisting harmoniously. It's a beautiful thing.

*Above from left: Dual-stage driver and front passenger airbags. Front head/side curtain airbags and driver and front passenger side airbags (available on LE model). Front seatbelt pre-tensioners with force limiters. Above inset: Corolla's efficient VVT-i engine.*

**COROLLA LE** Then there's the Corolla LE (above, top) with Optitron electronic gauges, power windows, power auto door lock with shifter activation and colour-keyed mirrors. And don't forget the Corolla CE (above) with

**COROLLA CE** its 16-valve VVT-i engine, colour-keyed bumpers and bodyside mouldings. So much fun you can practically write off the blues.

*Above from top: Corolla LE shown in Impulse Red. Corolla CE shown in Phantom Grey Pearl.*

**DRESS IT UP. DRIVE IT OUT.** Express yourself. Take your Toyota Corolla to a whole new level of self-expression by adding any of the Toyota Accessories custom designed for your model. It's a great way to personalize your new vehicle, optimize its appearance and enhance the performance all at the same time. Ask your Toyota Dealer. To find the Toyota Dealer nearest you go to [toyota.ca](http://toyota.ca) or call **1-888-TOYOTA-8**.



Side window visors

Hood deflector

Subwoofer

Rear spoiler

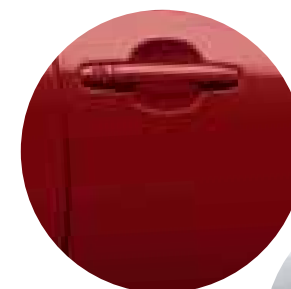
Enhance the look and functionality of your new Corolla by choosing from the following list of Accessories:

- All-season mats • Block heater • Body kit
- Cargo box • Cargo liner • Cargo net • Cruise control
- Dash accent kits • Door sill protectors
- Front end mask • Licence plate cover
- Performance exhaust
- Rear bumper protector
- Security system
- Towing accessories • Wheel locks



Corolla all dressed up with a rear spoiler, a hood deflector and a "body kit" which includes front and rear bumper chins and side skirts.

## 2005 COROLLA COLOURS



3P1 Impulse Red<sup>1,3,4</sup>



1E7 Silver Streak Mica<sup>1,3,4</sup>



040 Alpine White<sup>1,3,4</sup>



209 Black Sand Pearl<sup>1,3,4</sup>



8P4 Indigo Ink<sup>1,3,4</sup>



4Q2 Frosted Mink Pearl<sup>2,3</sup>



775 Cactus Mica<sup>2,3</sup>



1E3 Phantom Grey Pearl<sup>1,3,4</sup>

<sup>1</sup> Stone Fabric on CE and LE models.

<sup>2</sup> Bone Fabric on CE and LE models.

<sup>3</sup> Optional Bone Leather on LE models.

<sup>4</sup> Dark Grey Fabric on Sport and XRS models.

## NEW VEHICLE WARRANTY SUMMARY

*No Deductibles – No Transfer Fees*

### Comprehensive Coverage - 3 years or 60,000 km

This warranty includes 24 hour Roadside Assistance and other benefits, as well as coverage of repairs on any part of the vehicle that is defective in material or workmanship under normal use and maintenance. Different warranties apply to original tires.

### Powertrain Components - 5 years or 100,000 km

This warranty covers repairs to powertrain components that are defective in material or workmanship under normal use and maintenance.

### Major Emission Control Components - 8 years or 130,000 km

This warranty covers repairs to specified major emission components that are defective in material or workmanship under normal use and maintenance.

### Corrosion Perforation - 5 years unlimited distance

Any sheet metal found, under normal use, to have developed a perforation from corrosion due to defects in material or workmanship.

## VEHICLE COVERAGE

**ECP™** EXTRA CARE PROTECTION With Extra Care Protection you receive inflation protected coverage from mechanical failures, road emergencies, and much more. It's the most affordable way to guarantee your peace of mind. Consult your Toyota Dealer for details.

**TOYOTA EXPERIENCE** Toyota Dealers are dedicated to making the experience of owning a Toyota both satisfying and rewarding. Our highly skilled, Toyota-trained technicians are here to make sure you enjoy many years of trouble-free driving. "That new Toyota feeling - we help you keep it."

**TOYOTA FINANCIAL SERVICES** If you're looking at leasing or financing, we're here to help. We provide competitive interest rates, flexible terms, and an easy online pre-approval process. The toughest decision should be choosing which Toyota you want. Visit us at [www.toyotafinancialservices.ca](http://www.toyotafinancialservices.ca).

Toyota Canada and its Dealers are proud sponsors of Canadian Special Olympics.

**Toyota Graduate Program** This program assists new graduates in their purchase of a New or Certified Used Toyota. The program differs depending on the model chosen. Be sure to ask your Dealer when purchasing your Toyota. Some conditions may apply.



TOYOTA | EVERGREEN  
LEARNING GROUNDS



2005 COROLLA

FEATURES

COROLLA	CE	SPORT	LE	XRS
<b>INTERIOR:</b>				
• AM/FM CD, 4-Speakers, Roof-Mounted Antenna	•			
• AM/FM CD, 6-Speakers, Roof-Mounted Antenna		•	•	•
• Rear Seat Heater Ducts	•			
• Air Conditioning, Clean Air Filter, Rear Seat Heater Ducts		•	•	•
• Fabric Seat Material	•			
• Sport Fabric Seat Material		•	•	
• Premium Cloth Seat Material			•	
• Front Bucket Seats	•	•		
• Front Sport Seats				•
• Driver Seat Recline, Cushion Height, Headrest-Vertical Adjustments	•	•	•	•
• Passenger Seat Recline, Headrest-Vertical Adjustments	•	•	•	•
• 60/40 Split Rear Bench Seat w/Fold-Down Seat Back, Headrest-Vertical Adjustments	•	•	•	
• Rear Bench Seat, Headrest-Vertical Adjustments				•
• Power Windows w/Driver Side Auto Down			•	•
• Tachometer, Water Temperature Gauge, Outside Temperature Gauge	•			
• Silhouette Lighted Gauges, Tachometer, Water Temperature Gauge, Outside Temperature Gauge		•		
• Optitron Electronic Gauges, Tachometer, Water Temperature Gauge, Outside Temperature Gauge			•	•
• Dual Vanity Mirrors	•	•	•	•
• Leather-Wrapped Steering Wheel		•		•
• Leather-Wrapped Shift Knob				•
• Simulated Woodgrain Trim			•	
• Fabric Door Trim, Fabric Headliner	•	•	•	•
• Chrome Inner Door Handles		•		•
• Chrome Vent Knobs		•	•	•
• Driver Footrest	•	•	•	•
• Metallic Dash Accents				•
• XRS Scuff Plates				•
• 3-Spoke Tilt Steering Wheel	•	•	•	•
• Power Door Locks		•	•	•
• Power Auto Door Lock w/Shifter Activation			•	
• Carpet Floor Mats	•	•	•	•
<b>CONVENIENCE:</b>				
• Cruise Control			•	•
• Digital Clock	•	•	•	•
• Front & Rear Cup Holders	•	•	•	•
• Accessory Power Outlets	•	•	•	•
• Driver's Coin Case Compartment	•	•	•	•
• Door Map Pocket	•	•	•	•
• Front Seat Back Pocket				•
• Keyless Entry			•	•
• Key Lockout Protection			•	•
• Illuminated Entry w/Fadeout		•	•	•

\* Airbag Notice: The 2005 Corolla features a driver & front passenger airbag Supplemental Restraint System (SRS) which activates only in a full-frontal collision of sufficient magnitude to inflate the bags. In moderate frontal collisions, the airbags may not inflate; in a rear or side collision the airbags are designed not to inflate, so the primary protection is provided by the lap and shoulder belt system. *Seatbelts must be worn at all times by all occupants.*

COROLLA	CE	SPORT	LE	XRS
<b>SAFETY:</b>				
• Dual-Stage Driver & Passenger Airbag Supplemental Restraint System (SRS)*		•	•	•
• Front Seatbelt Pre-Tensioners & Force Limiters		•	•	•
• All-Position 3-Point Lap & Shoulder Belts		•	•	•
• Adjustable "B" Pillar Shoulder Belt Anchors		•	•	•
• Anchor Points for Child Restraint Seats		•	•	•
• Child Protector Rear Door Locks		•	•	•
• Engine Immobilizer		•	•	•
• Low Fuel, Low Washer Fluid, Door Ajar, Front Driver & Passenger Seatbelt Warning		•	•	
• Low Fuel, Low Washer Fluid, Door Ajar, Tire Pressure Monitoring System, Front Driver & Passenger Seatbelt Warning				•
<b>EXTERIOR:</b>				
• Full Wheel Covers		•		
• Aluminum Alloy Wheels			•	•
• Side Window Defoggers		•	•	•
• Electric Rear Window Defroster w/Timer		•	•	•
• Tinted Glass		•	•	•
• Fuel Cap Hanger		•	•	•
• Coloured Bumpers & Bodyside Mouldings; Front & Rear Splash Guards	•			
• Coloured Bumpers, Mirrors, Bodyside Mouldings, Full Skirt Package, Rear Spoiler		•		
• Coloured Bumpers, Mirrors, Bodyside Mouldings, Front & Rear Splash Guards				•
• Coloured Bumpers, Mirrors, Bodyside Mouldings, Full Skirt Package, Unique Grille, Rear Spoiler; Power Moonroof, Moonroof Sunshade				•
• Power Remote-Control Mirrors		•	•	•
• Intermittent Wipers		•		
• Intermittent Wipers			•	•
• Reflector-Style Halogen Headlamps		•	•	•
• Fog Lamps		•	•	•
<b>PACKAGES:</b>				
<b>CE PACKAGE 'B':</b>				
• Air Conditioning, Clean Air Filter, Keyless Entry, Power Door Locks		○		
<b>CE PACKAGE 'C':</b>				
• Air Conditioning, Clean Air Filter, Keyless Entry, Power Door Locks, Power Windows w/Driver Side Auto Down, Cruise Control		○		
<b>CE SPECIAL EDITION:</b>				
• Air Conditioning, Dust/Pollen/Deodorizing Air Filter, Keyless Entry, Power Door locks, Aluminum Alloy Wheels with Wheel Locks, Power Moonroof, Special Edition Badging		○		
<b>LE PACKAGE 'B':</b>				
• Front Seat-Mounted Side Airbags (SRS)*, Front Head/Side Curtain Airbags (SRS)*, Leather Seat Surfaces, Power Moonroof, Leather-Wrapped Steering Wheel, Chrome Inner Door Handles, Anti-Theft System				○
<b>SPORT PACKAGE 'B':</b>				
• Antilock Braking System (ABS), Electronic Brake Force Distribution (EBD), Power Windows w/Driver Side Auto Down, Cruise Control, Power Moonroof				○

• - Standard ○ Optional

COROLLA	CE	SPORT	LE	XRS
<b>MECHANICAL</b>				
<b>Engine 1MZ-FE</b>				
• 1.8 Litre, 4-Cylinder, DOHC, 16-Valve, Variable Valve Timing w/Intelligence (VVT-i), Stainless Steel Exhaust System		•	•	•
• 1.8 Litre, 4-Cylinder, DOHC, 16-Valve, Variable Valve Timing w/Lift & Intelligence (VVTLi <sup>†</sup> ), Stainless Steel Exhaust System				•
<b>Compression Ratio</b>		•	•	•
• 10.0:1				
• 11.5:1				•
<b>Horsepower (kW)</b>		•	•	•
• 130 (96.9) @ 6000 rpm				
• 170 (127) @ 7600 rpm				•
<b>Torque (N.m.)</b>		•	•	•
• 125 (170) @ 4200 rpm				
• 127 (172) @ 4400 rpm				•
<b>Suspension</b>				
• <b>Front:</b> Independent, MacPherson Gas Struts, Coil Springs, Stabilizer Bar		•	•	•
• <b>Rear:</b> Torsion Beam Type, Coil Springs, Stabilizer Bar		•	•	•
• <b>Front:</b> Independent, Sport Suspension, MacPherson Gas Struts, Front Strut Tower Bar, Coil Springs, Stabilizer Bar				•
• <b>Rear:</b> Sport Suspension, Torsion Beam Type, Coil Springs, Stabilizer Bar				•
<b>Drivetrain</b>				
• Front Wheel Drive		•	•	•
<b>Transmission</b>				
• 5-Speed, Manual, Overdrive		•	•	
• 4-Speed, Automatic, ECT, Overdrive, Overdrive Cancel Switch		○	○	•
• 6-Speed, Manual, Overdrive				•
<b>Brakes</b>				
• Power-Assisted, Front Ventilated Discs, Rear Drums		•	•	
• Power-Assisted, Antilock Braking System (ABS), Electronic Brake Force Distribution (EBD), Front Ventilated Discs, Rear Drums				•
• Power-Assisted, Antilock Braking System (ABS), Electronic Brake Force Distribution (EBD), Front Ventilated Discs, Rear Discs				•
• Antilock Braking System (ABS), Electronic Brake Force Distribution (EBD)			○	
<b>Steering</b>				
• Power Steering, Rack & Pinion		•	•	•
<b>Tires</b>				
• P185/65R15, All-Season Radials		•	•	
• P195/65R15, All-Season Radials			•	•
• P195/55R16, Summer Tires				•

• - Standard ○ Optional

<sup>†</sup> Premium fuel recommended for optimum performance.

COROLLA	CE	SPORT	LE	XRS
<b>DIMENSIONS mm (in.)</b>				
<b>Length</b>	4530 (178.3)	•	•	•
<b>Width</b>	1700 (66.9)	•	•	•
<b>Height (Unloaded)</b>	1480 (58.3)	•		
	1485 (58.5)		•	
	1475 (58.1)			•
<b>Wheelbase</b>	2600 (102.4)	•	•	•
<b>Tread</b>	<b>Front:</b> 1480 (58.3)	•	•	•
	<b>Rear:</b> 1460 (57.5)	•	•	•
<b>Seating Capacity</b>	5	•	•	•
<b>Ground Clearance</b>	145.4 (5.72)	•		
	153.4 (6.03)		•	
	145.0 (5.71)			•
<b>Headroom</b>	<b>Front:</b> 998 (39.2)	•	•	•
	<b>Rear:</b> 943 (37.1)	•	•	•
<b>Headroom w/Moonroof</b>	<b>Front:</b> 960 (37.8)		○	○
	<b>Rear:</b> 940 (37.0)		○	○
<b>Legroom</b>	<b>Front:</b> 1049 (41.3)	•	•	•
	<b>Rear:</b> 898 (35.4)	•	•	•
<b>Shoulder Room</b>	<b>Front:</b> 1350 (53.1)	•	•	•
	<b>Rear:</b> 1359 (53.5)	•	•	•
<b>GROSS VEHICLE WEIGHT kg (lb)</b>				
	1625 (3585)	•	•	•
	1635 (3605)			•
<b>CURB WEIGHT kg (lb)</b>				
	Manual: 1145 (2530)	•		
	Automatic: 1175 (2595)		○	
	Manual: 1155 (2550)		•	
	Automatic: 1185 (2615)		○	•
	Manual: 1210 (2670)			•
<b>TOWING CAPACITY kg (lb)</b>				
	680 (1500)	•	•	•
<b>CARGO CAPACITY m<sup>3</sup> (cu.ft.)</b>				
	0.39 (13.6)	•	•	•
<b>COEFFICIENT OF DRAG cd</b>				
	0.296	•	•	•
<b>TURNING CIRCLE m (ft.)</b>				
	10.7 (35.2)	•	•	•
<b>FUEL CAPACITY litres (gal)</b>				
	50.0 (11.0)	•	•	•
<b>FUEL CONSUMPTION RATING**</b>				
	<b>L/100 km mpg</b>			
City/Highway				
Manual	7.1/5.3 40/53	•	•	
Manual	11.3/8.8 25/32			•
Automatic	8.1/5.8 35/49		○	•

\*\* Based on 2004 model year data (see your Dealer for details). These estimates are based on the Government of Canada's approved criteria and testing methods. The actual fuel consumption of this vehicle may vary. Refer to the Government of Canada publication *EnerGuide Fuel Consumption Guide*.

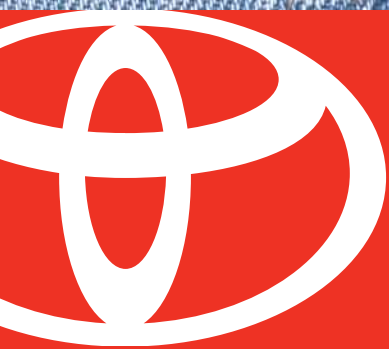
2005 COROLLA

SPECIFICATIONS\*

\*Toyota Canada Inc.

Every effort has been made to ensure the specifications and equipment shown are accurate based on information available at time of printing. In some cases, certain changes in standard equipment, options or product delays may occur which would not be reflected in this brochure. Toyota Canada Inc. reserves the right to make these changes without notice or obligation. The Toyota website [toyota.ca](http://toyota.ca) — or your Toyota Dealer is your best source for up-to-date information.





*Toyota Corolla.*

Toyota Canada, in partnership with the Canadian Tourism Commission, has developed a national program to promote tourism within Canada.

*"GET GOING CANADA"* encourages Canadians to drive Canada, see its wonders, and demonstrates our pride in and dedication to *"the world's greatest country"*.

**1-888-TOYOTA-8 \* [toyota.ca](http://toyota.ca)**



Toyota recognizes its duty to safeguard the environment. To support this, our brochure is printed on recycled paper with vegetable-based inks to be fully recyclable.

PRINTED IN CANADA C0002-0415E-25 57M