

IMPREZA 2006

www.subaru.ca



The Supplemental Restraint System (SRS airbags) affords the driver and passenger additional protection in some collisions. This system provides supplemental protection only, and seatbelts must be worn in order to avoid injuries to out-of-position occupants upon airbag deployment. The combination of SRS and seatbelts provides the best protection in a serious accident. All illustrations, specifications, features and photographs contained in this brochure are based on product information available at the time of its printing, and may not be completely accurate following its publication. Colours shown may vary due to reproduction variations in the printing process, and some vehicle parts cannot be shown in certain photographs. Subaru Canada, Inc. reserves the right to discontinue or make changes at any time, without notice or incurring obligations, to colours, materials, equipment, accessories, features, specifications and models, or to change their prices. Some models shown may be from international markets and are not available in Canada, or they may be shown with equipment or accessories which are optional (at extra cost) or only available in certain combinations, or they may be subject to product delays or not be available in Canada. Please visit our Web site for the latest information and specifications. For complete details on product updates, warranties or the Subaru C.A.R.E. program, please contact your Subaru Dealer. Subaru, Impreza, WRX, STI, SUBARU BOXER, Subaru C.A.R.E. and Subaru C.A.R.E. Customer Assistance for Roadside Emergencies are registered trademarks. Printed in Canada. © 2005 Subaru Canada, Inc. 2006 Impreza model year.

Environmental Management System (EMS) ISO 14001:1996 certified by SGS

SBI06E



Everything working in harmony.

Our core technology:

Subaru symmetrical All-Wheel Drive

Subaru's legendary symmetrical full-time All-Wheel Drive system is all about balance: the balance between world-class safety and performance; the balance between confidence and passion; the balance between road and driver. Comprised of a horizontally-opposed SUBARU BOXER engine, full-time All-Wheel Drive transmission and long-travel suspension, the Subaru symmetrical full-time All-Wheel Drive system is arranged in a simple, symmetrical layout to provide unequalled balance and precise handling. We've spent over 30 years refining this system so that every component works in perfect harmony. The result is unparalleled driving pleasure and a true sense of balance, so you'll always feel in control, wherever your adventures take you.

SYMMETRICAL AWD

*Advanced technology for
an increasingly demanding world.*



Every Subaru built for the road shares the same DNA as our world-renowned FIA World Rally Championship (WRC) rally cars. The passion, performance and technology that our engineers build into our rally cars also form the foundation of our production vehicles. The traits it takes to win a rally – control, agility, stability and reliability – are the same traits that make our vehicles truly satisfying. However, the experience of driving a Subaru goes much further than that. Every Subaru is also designed and engineered with one simple concept in mind: Think. Feel. Drive. It is a brand philosophy based on how we think about your desires and needs, both today and in the future. It is about the emotional connection that begins with our designers and engineers and extends to our drivers every time they turn the ignition. Finally, it is about driving ourselves to reach new frontiers and helping you do the same.



Think. Feel. Drive.

The drive of your life.

Driving is about more than just getting from point A to point B. It is about igniting the senses. It is about the pure satisfaction of a well-timed gear shift or picking the perfect line through a winding road. It is about the connection between car and driver. Only a team of engineers and designers who understand what driving is really about could have created the 2006 Impreza Sedan and Sport Wagon. As the basis of our legendary FIA World Rally Championship (WRC) rally cars, it should come as no surprise that the Impreza boasts performance technology unlike anything else in its class. To better complement its enhanced drivetrain, the Impreza features a redesigned front fascia – with stylish new headlights and an aerospace-inspired grille – as well as a new hood and eye-catching new taillights. With advanced technology and a more sophisticated sense of style, the 2006 Impreza is ready to take you for the drive of your life.



Straight lines are for rulers, not roads.



2.5i Sedan

Pure driving performance has never been this comfortable.



WRX

Performance meets practicality.

Having a vehicle with impressive performance capabilities is a wonderful thing. Having a vehicle that combines impressive performance and exceptional practicality makes it truly exceptional, as is the case with the 2006 Impreza Sedan and Sport Wagon. Every vehicle in the Impreza lineup features a spacious cabin with sporty, supportive seats, plenty of interior storage space and a long list of standard features – including air conditioning, a security system and an outside temperature display – to help make all your adventures as comfortable and convenient as possible. Impreza Sedans also offer impressive trunk space and a folding pass-through between the rear seats for longer items. For even more cargo-carrying versatility, Impreza Sport Wagons feature roof rails and a large cargo area which can be made even more accommodating thanks to handy, 60/40-split, flat-folding rear seats. Built to satisfy your desire for performance and your need for practicality, the 2006 Impreza lineup of Sedans and Sport Wagons lets you have it all.



The adventure doesn't have to stop just because the road does.



Outback Sport

Awe. Inspiring.



WRX STI

Accelerate your adrenaline.

Thanks in part to the lessons learned in the heat of FIA World Rally Championship (WRC) competition, the Impreza has become the standard by which all other sport compacts are judged. However, our engineers were not content to rest on their laurels. Instead, they dedicated themselves to making the 2006 Impreza better than ever. The 173-horsepower engine in Impreza 2.5i and Outback Sport models now features Subaru's i-Active Valve Lift System for improved performance. In addition to its new 17" aluminum alloy wheels, WRX models also boast a new engine for 2006, translating into a 230-horsepower, 235 lb-ft of torque thrill ride. The absolutely stunning, 300-horsepower WRX STI is also improved for 2006 thanks to its enhanced aerodynamics and revised, state-of-the-art All-Wheel Drive system. No matter which model you choose, impressive power is delivered through our rally-proven symmetrical full-time All-Wheel Drive technology, putting you in complete control and providing a spellbinding driving experience.



You haven't driven until you've driven an Impreza.



WRX Sport Wagon

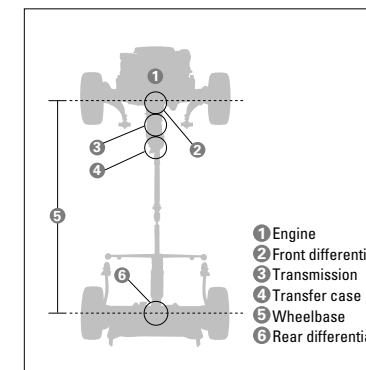


SYMMETRICAL **AWD**

The legendary Subaru symmetrical full-time All-Wheel Drive system is respected the world over.

The benefits of total compatibility.

In an effort to provide unparalleled safety and performance regardless of road or weather conditions, Subaru has spent over three decades creating and refining a unique, balanced drivetrain called the Subaru symmetrical full-time All-Wheel Drive (AWD) system. By strategically positioning the engine, transmission, transfer case and differentials along the centreline of the vehicle, the Subaru symmetrical full-time AWD system delivers a truly exceptional driving experience. This simple, efficient layout – devoid of the doglegs or deviations common to more conventional AWD or four-wheel drive systems – optimizes weight and power distribution and gives the 2006 Impreza unmatched agility, stability and control. Standard on every Subaru sold in Canada, the symmetrical full-time All-Wheel Drive system provides complete confidence and pure driving pleasure, no matter where your journeys take you.



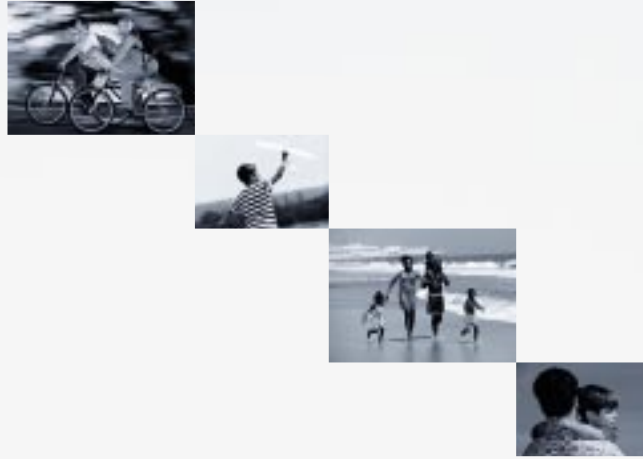
SUBARU BOXER



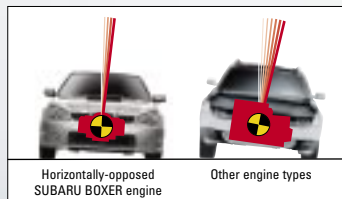
At the heart of the Subaru symmetrical full-time AWD system is our incredibly reliable horizontally-opposed SUBARU BOXER engine. With pistons that move horizontally rather than vertically, our engines are smoother and more efficient than many V-type or in-line engines. The horizontal movement of the pistons counteract each other to cancel out vibration – ensuring seamless power delivery. They also allow for a more compact engine, giving our vehicles the advantage of a lower centre of gravity for improved handling and control. Since SUBARU BOXER engines are made primarily of aluminum, their lightweight composition further enhances each vehicle's handling and directional stability.

DRIVE SUBARU

Whether you are tackling a winding mountain road on a clear autumn day or performing an emergency lane change in the dead of winter, the 2006 Impreza's symmetrical full-time All-Wheel Drive system will make any drive as safe and enjoyable as possible. The Impreza's stable handling and tenacious grip provide both peace of mind and amazingly precise, agile handling, resulting in a vehicle that feels secure and is pleasurable to drive, no matter what road or weather conditions lay ahead.

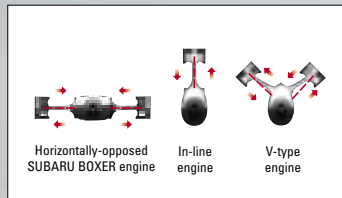


Three distinct advantages.



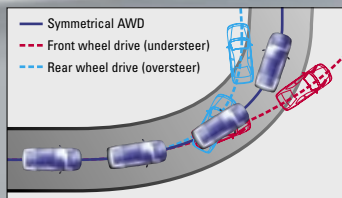
Better balance

During cornering, centrifugal force causes a vehicle to lean; how much it leans depends in part on the position of the vehicle's centre of gravity. Due to the placement of its compact SUBARU BOXER engine, the Impreza features an exceptionally low centre of gravity, which helps improve handling and stability while reducing body roll without resorting to an overly stiff suspension.



Less vibration

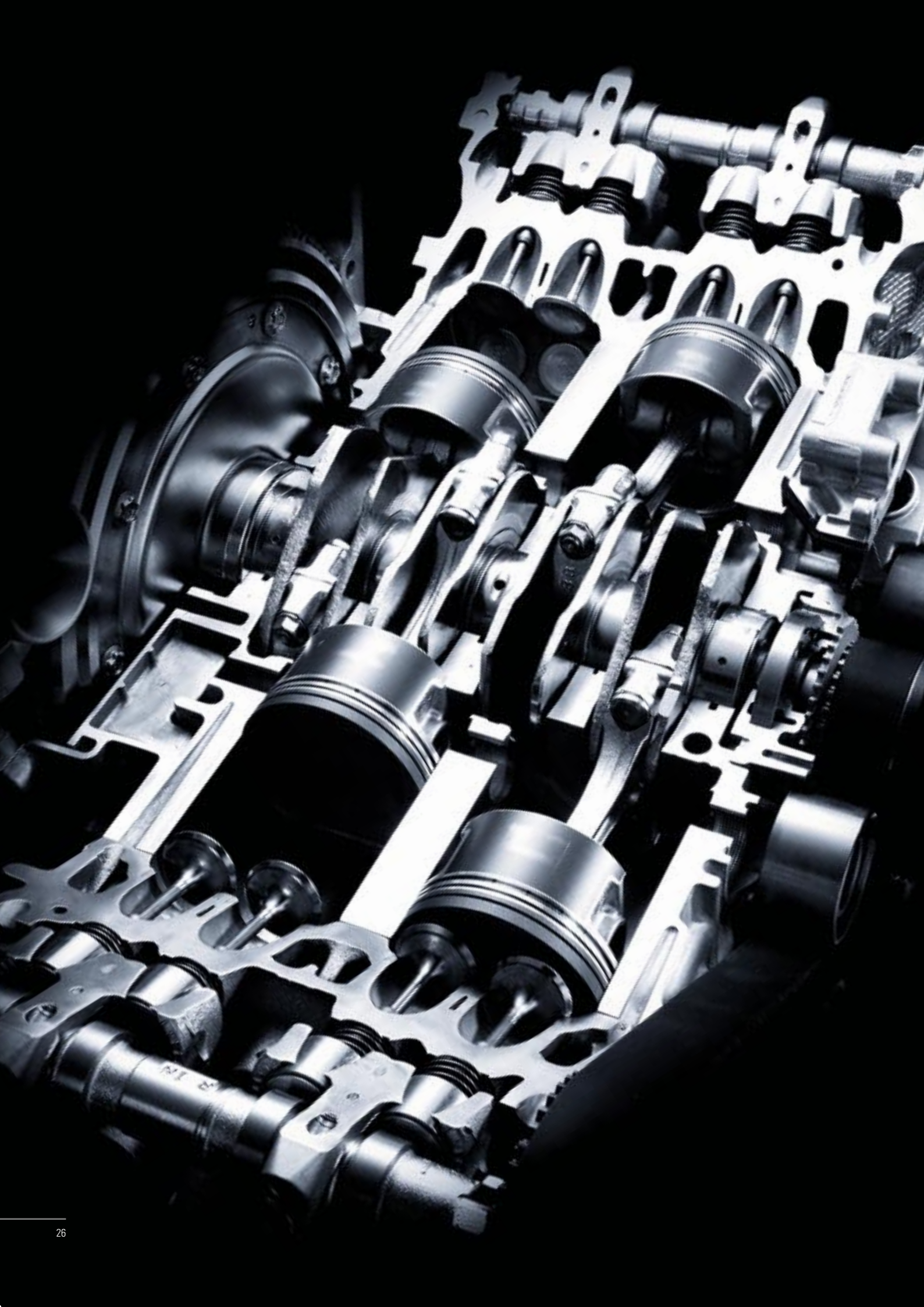
With its 180° configuration, the horizontally-opposed SUBARU BOXER engine dramatically cuts down the vibration that exists in some V-shaped or in-line configuration engines. The result is smooth, seamless power right through the rev range, as well as unprecedented driving comfort.



More traction

One reason for Subaru's total devotion to symmetrical full-time AWD is the system's inherent advantages over two-wheel drive during cornering. When torque is sent through just two tires, lateral forces tend to make the vehicle either understeer or oversteer, which can lead to instability. When torque is sent through all four tires, the result is precise, controlled handling.





the POWER

Advanced engine technologies

Just like the power plants in our legendary FIA World Rally Championship (WRC) rally cars, all Subaru vehicles sold in Canada are equipped with aluminum, horizontally-opposed boxer engines. This is because SUBARU BOXER engines are lightweight, compact and positioned to create a low centre of gravity. Featuring a wide range of innovative technologies designed to optimize performance and efficiency while reducing emissions, the SUBARU BOXER is the ideal focal point of the Subaru symmetrical full-time AWD system.

i-Active Valve Lift System

For 2006, the naturally aspirated SUBARU BOXER engine powering Impreza 2.5i and Outback Sport models features Subaru's new i-Active Valve Lift System. Whereas conventional rocker arms are one-piece units, this new system employs two-piece rocker arms that can work separately at low RPM or together at high RPM, thanks to a specially designed camshaft. This helps to provide excellent low-end torque, engine efficiency and performance you can feel every time you get behind the wheel.

Active Valve Control System

The turbocharged and intercooled SUBARU BOXER engines at the heart of Impreza WRX and WRX STI models feature Subaru's Active Valve Control System. Designed to improve performance and provide a smooth idle, this technology uses a hydraulic system controlled by the engine management computer to vary the timing of the intake valves. Whether at idle, during a leisurely cruise or under hard acceleration, Subaru's Active Valve Control System helps to ensure peak performance and the lowest possible emissions.

SUBARU BOXER 2.5-litre engine

Thanks in part to the addition of Subaru's i-Active Valve Control System, the 2.5-litre, single overhead cam (SOHC) SUBARU BOXER engine that powers Impreza 2.5i and Outback Sport models is more powerful than ever. Producing an impressive 173 hp and 166 lb-ft of torque, this lightweight SUBARU BOXER engine is impeccably reliable and an absolute joy to drive. It is also clean-burning and fuel efficient, helping you enjoy your adventures with a clear conscience.



SUBARU BOXER 2.5-litre turbo engine

The turbocharged and intercooled SUBARU BOXER engine powering the incredible Impreza WRX is new for 2006. Its displacement has grown from 2.0 litres to 2.5 litres, resulting in an improved torque curve for better performance. Pumping out 230 hp and 235 lb-ft of torque, this aluminum, dual overhead cam (DOHC) engine also features Subaru's Active Valve Control System for improved power and responsiveness.



SUBARU BOXER 2.5-litre turbo engine (STI)

The SUBARU BOXER engine at the heart of the street-legal 2006 Impreza WRX STI features some of our most advanced technology. This 2.5-litre, high-boost turbocharged and intercooled engine produces a road-blistering 300 hp and 300 lb-ft of torque. The use of hollow intake valves and sodium-filled exhaust valves help to reduce inertia and friction for high-revving reliability and smoothness, while lightweight, shimless valve lifters and Subaru's Active Valve Control System help make the engine incredibly responsive.



the SHIFT

Advanced transmission technologies

Designed to take full advantage of symmetrical full-time All-Wheel Drive, the 2006 Impreza's automatic and manual transmissions are a marvel of engineering and efficiency. Created to bring smooth, seamless gear changes throughout the rev range and over a variety of road conditions, the Impreza's transmissions are also cleverly packaged. By combining the transmission, front differential and transfer case into a single unit that is mounted along the centreline of the vehicle, Subaru engineers created a transmission that is compact and efficient – as opposed to other vehicles featuring heavy or complex transmissions. Capable of delivering linear, controllable, full-time power to all four wheels in virtually any driving condition, the Impreza's manual and automatic transmissions offer a superb balance of precise, smooth performance and engineered efficiency.

6-speed Manual Transmission with DCCD (6MT)

The incredible, rally-inspired Impreza WRX STI features a 6-speed manual transmission with close-ratio gearing and a short-throw shifter for a truly performance-oriented feel. The WRX STI's state-of-the-art transmission features



a Subaru-exclusive Driver Controlled Centre Differential (DCCD), which allows the driver to control the torque split between the front and rear wheels. DCCD is comprised of an electronically controlled limited-slip centre differential, a yaw-rate sensor and a new-for-2006 steering wheel-angle sensor and cam-type mechanical limited-slip centre differential. Beyond its state-of-the-art DCCD system, the WRX STI's advanced symmetrical full-time All-Wheel Drive system also features a helical-type front limited-slip differential and a mechanical-type rear limited-slip differential. Everything works together in complete harmony to provide absolutely stunning control and handling.

4-speed Electronic Automatic Transmission (4EAT)

The 2006 Impreza lineup features two different 4-speed automatic transmissions which boast smooth, seamless gear changes and exceptional All-Wheel Drive performance.



Impreza 2.5i and Outback Sport models feature an optional 4-speed electronic direct control automatic transmission. Working in combination with the latest-generation electronically controlled multi-plate transfer clutch, this transmission monitors each wheel's rotational speed to optimize traction and provide incredible control. For a more performance-oriented feel, the automatic transmission optional on the Impreza WRX Sedan works in combination with an electronically controlled locking centre differential and also features Variable Torque Distribution (VTD), which sends more torque to the rear wheels on dry roads for exceptionally sporty handling.

5-speed Manual Transmission (5MT)

The 5-speed manual transmission that is standard on all Impreza 2.5i, Outback Sport and WRX models is designed and engineered to integrate perfectly into the Impreza's symmetrical full-time All-Wheel Drive system



while offering impressive performance, efficiency and control. With a compact, viscous-coupling limited-slip centre differential providing intelligent torque distribution and a new-for-2006 double-cone synchronizer for first gear, the 5-speed manual offers smooth, efficient shifting and exceptional All-Wheel Drive traction and performance.

the DRIVABILITY

Advanced suspension technologies

The balanced, symmetrical layout of the 2006 Impreza's drivetrain provides a perfect foundation for 4-wheel independent suspension. Due to the compact size and the centrally mounted location of the SUBARU BOXER engine between the front struts, the Impreza utilizes long, equal-length axle shafts. These help to maximize suspension travel at all four wheels, virtually eliminating "torque steer", which occurs when a vehicle pulls to one side under brisk acceleration. Another benefit of its long-travel suspension and incredibly rigid chassis is the fact that the Impreza is better able to maintain tire contact with the road over uneven surfaces, helping to preserve vehicle stability when encountering rough roads. Beyond the inherent balance offered by equal-length front and rear axle shafts, the Impreza's sophisticated suspension works in unison with its state-of-the-art chassis to provide complete stability and responsive handling.



WRX front suspension



WRX rear suspension

Suspension

All Impreza 2.5i and WRX models feature a sport-tuned suspension that offers superb handling and poise. WRX Sedans also have the added benefit of lightweight aluminum control arms in its front suspension for 2006. Impreza Outback Sport models are equipped with a heavy-duty, raised suspension that translates into higher ground clearance for added all-road, all-weather versatility.

To take full advantage of its incredible All-Wheel Drive capabilities, the WRX STI utilizes an inverted, strut-type suspension system specially tuned by Subaru Tecnica International (STI). This sport-tuned suspension features stabilizer bars, a front cross-member stiffener bar, rear cross-member stiffener plates and rear aluminum lateral links, which combine to provide exceptional handling and vehicle dynamics, while minimizing road noise and vibration.



WRX STI inverted strut suspension



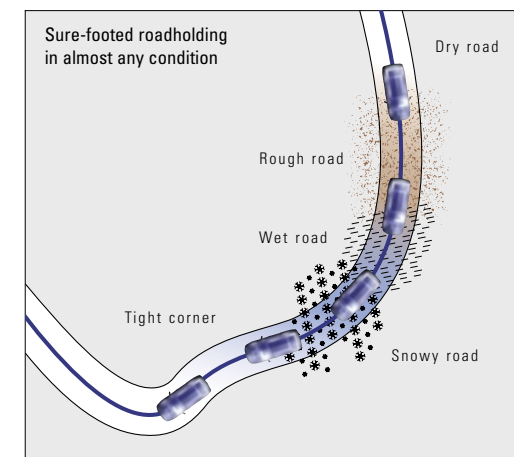
the ACTIVE safety

Accident avoidance technologies

At Subaru, we believe a truly safe vehicle is one that excels at preventing accidents before they happen. With that in mind, the 2006 Impreza was designed from the ground up to offer best-in-class active safety features in an effort to inspire driver confidence and peace of mind.

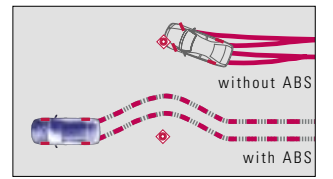
Safety starts with symmetrical AWD

Active safety begins with the Subaru symmetrical full-time All-Wheel Drive system, which offers sure-footed traction and control in a variety of road and weather conditions. From snow-covered back roads to rain-slicked highways, the 2006 Impreza gives drivers the confidence of being backed by more than 30 years of Subaru AWD expertise. The Subaru symmetrical full-time All-Wheel Drive system also provides the Impreza with the rock-solid stability to confidently carve through winding roads and sharp corners or blaze its own trail through rougher terrain. Because the Impreza's symmetrical All-Wheel Drive system is full-time, its benefits can be appreciated throughout every journey – even on dry, pristine roads.



Braking

In addition to the active safety benefits of the Subaru symmetrical full-time All-Wheel Drive system and the vehicle's superb chassis,



a 4-wheel/4-channel/4-sensor Anti-Lock Braking System (ABS) is also



standard on all 2006 Impreza 2.5i, Outback Sport and

WRX models. Working through sensors at all four

wheels, ABS prevents wheels from locking up

during heavy braking, allowing the driver

to apply the brakes and steer away from

trouble at the same time. ABS provides

outstanding safety and control, even during

emergency manoeuvres or in inclement weather conditions.

Impreza 2.5i, Outback Sport and WRX models are also equipped with Electronic Brake-Force Distribution (EBD), which detects passenger and cargo load and then controls the balance between front and rear brakes to help distribute brake force more effectively when the vehicle is weighed down.

Beyond the braking performance offered by its ABS and EBD systems, 2006 Impreza WRX models also boast new 4-piston calipers and 292 x 24 mm ventilated discs up front as well as 2-piston calipers and 288 x 18 mm ventilated discs in the rear.

In the 2006 Impreza WRX STI, active safety is augmented by huge, ventilated Brembo® brakes with a Super Sport 4-wheel/4-channel/5-sensor Anti-lock Braking System (ABS). The Super Sport system is aided by a g-load sensor, which helps to make sure that braking forces are distributed effectively during cornering while braking – which makes it ideal for both accident avoidance manoeuvres and high-performance driving.

the **PASSIVE** safety

Advanced protection technologies

When an accident is unavoidable, the 2006 Subaru Impreza's exceptional passive safety technologies help to offer a 360-degree barrier of protection. Front airbags, front side-impact airbags, a ring-shaped reinforcement frame and a true dedication to the safety of those inside the vehicle and out all translate into the type of world-class safety only Subaru can provide.



■ Ring-shaped reinforcement frame

Ring-shaped reinforcement frame

In the event of an accident, Subaru's exceptional passive safety technologies help to offer a 360-degree barrier of protection. The 2006 Impreza's ring-shaped reinforcement frame has been designed to provide best-in-class collision safety. The Impreza also features energy-absorbing crumple zones, side-impact door beams and has earned the highest possible rating[†] in frontal offset crash tests conducted by the Insurance Institute for Highway Safety (IIHS).

[†]Impreza (3/02) rating of "Good" based on 40 mph frontal offset crash tests conducted by the Insurance Institute for Highway Safety (IIHS).



Airbags, seatbelts and passive safety head restraints

All 2006 Impreza models feature dual front side-impact airbags as well as dual "smart" front airbags governed by a sophisticated system that detects passenger weight, seatbelt use and driver seat position before deploying the airbags accordingly. In the event of a rear-end collision, both driver and front passenger seats on all Impreza 2.5i and Outback Sport models feature passive safety head restraints, which move forward automatically to cradle the head and neck, lessening the risk of whiplash. The front seatbelts on all Impreza models feature pretensioners and load limiters, while an ISO-FIX/LATCH child seat anchor system and a trio of three-point seatbelts and head restraints come standard in the rear.

Pedestrian protection

Thanks to energy-absorbing front bumpers and innovative wipers that break away when subjected to enough force, the 2006 Impreza not only protects its driver and occupants, but also those outside the vehicle. The Impreza's hood is also designed to minimize pedestrian injury in the event of a collision. Due to the distance between the hood and the compact SUBARU BOXER engine, pedestrians are less likely to come into contact with the engine in the event of a collision.



thinking
responsibly

We want all Subaru owners to take pride in not only their vehicles, but also the Subaru name. That is why Subaru Canada, Inc. is dedicated to protecting the environment – just as our parent company, Fuji Heavy Industries (FHI), is committed to this same goal in Japan and throughout the world. With guidance and encouragement from FHI, Subaru Canada, Inc. has created an environmental policy that will help us to reduce pollution and waste as well as energy and water consumption. A major component of this environmental policy is our Environmental Management System (EMS), which has obtained ISO 14001:1996 certification from SGS SSC Canada Inc. (an accredited registration body) and is designed to help us monitor and improve our business operations in areas that have a direct impact on the environment. Our environmental policy also fosters a culture of continual improvement, ensuring that we never stop striving to meet our environmental targets and goals on our way to becoming a world-class leader in environmental performance.

Artist : Taira Ichikawa Title : Contact Dome Tour Project Museum Haus Kasuya



WRX Sport Wagon

the SPACE

Accommodating versatility

Comfort and convenience come standard.

Beyond the 2006 Impreza's exhilarating performance, advanced technologies and sophisticated new sense of style is a versatile vehicle that has been intelligently designed to accommodate both passengers and cargo with plenty of room to spare. Impreza Sedans offer a spacious trunk that can also fit longer items, thanks to a convenient, folding pass-through between the rear seats. However, if you need even more cargo-carrying capacity, Impreza Sport Wagons feature 60/40-split, flat-folding rear seats that fold down to reveal a large, flat-floored cargo area as well as standard roof rails that feature lockable crossbars on Impreza Outback Sport and WRX Sport Wagon models.



60/40-split, flat-folding rear seats (Sport Wagon)



Full flat cargo area (Sport Wagon)



60/40-split, flat-folding rear seats (Sport Wagon)



Full flat cargo area (Sport Wagon)



Retractable cargo cover (Sport Wagon)



Folding armrest with trunk pass-through (Sedan)



Trunk (Sedan)

A higher-quality cockpit.



WRX

The driver's seat of the 2006 Impreza is the best seat in the house. The sporty, intuitive controls fall within easy reach and are pleasant to the touch, while the 6-way adjustable driver's seat makes it easy to find the perfect driving position. For additional comfort and style, all WRX and WRX STI models boast leather-wrapped controls – with stylish red stitching on WRX STI models – rally sport seats with dual-temperature heaters as well as aluminum alloy sport pedals on manual transmission models. No matter which model you choose, the Impreza was born to be driven.

A higher level of performance.



WRX STI

While the 2006 Impreza was born to be driven, that doesn't mean it wasn't designed to be appreciated by passengers, too. With plenty of leg-, shoulder- and headroom, cleverly designed interior storage spaces and high-quality materials and upholstery – including stunning, blue Alcantara® upholstery on WRX STI models – the Impreza offers a pleasing mix of comfort and style. To make every drive even more enjoyable, Impreza 2.5i and Outback Sport models are equipped with an AM/FM/CD audio system, while WRX and WRX STI models feature a AM/FM/6CD premium audio system with six speakers.



Impreza WRX STI

High-boost turbocharged and intercooled horizontally-opposed SUBARU BOXER engine
300 horsepower and 300 lb-ft of torque
6-speed manual transmission (6MT)
Driver Controlled Centre Differential (DCCD)
Symmetrical full-time All-Wheel Drive with mechanical-type limited-slip rear differential and helical-type front differential
Brembo® high-performance brakes with Super Sport ABS and EBD
17" BBS forged aluminum alloy wheels with ultra high-performance Bridgestone tires
Xenon High-Intensity Discharge (HID) headlights
Driver and front passenger front and side-impact airbags
Anti-theft system and engine immobilizer
AM/FM/6CD premium audio system
Automatic climate control
Blue Alcantara® and knit cloth two-tone upholstery; heated front seats



Impreza WRX

Turbocharged and intercooled horizontally-opposed SUBARU BOXER engine
230 horsepower and 235 lb-ft of torque
5-speed manual transmission (5MT) or optional 4-speed electronic direct controlled automatic transmission (4EAT / WRX Sedan only)
Symmetrical full-time All-Wheel Drive with viscous-type limited-slip rear differential
17", 7-spoke, WRX-design aluminum alloy wheels
Driver and front passenger front and side-impact airbags
Anti-theft system and engine immobilizer
AM/FM/6CD premium audio system
Automatic climate control
Power tilting and sliding glass moonroof with sunshade (standard on 4EAT Sedan; optional on 5MT Sedan and Wagon)
Anthracite black woven cloth upholstery with grey side bolsters; heated front seats



See 2006 Impreza specifications insert for full details.



Outback Sport

Horizontally-opposed SUBARU BOXER engine with i-Active Valve Lift System
173 horsepower and 166 lb-ft of torque
5-speed manual transmission (5MT) or optional 4-speed electronic direct controlled automatic transmission (4EAT)
Symmetrical full-time All-Wheel Drive
Heavy-duty raised suspension
16", 7-spoke, Outback Sport-design aluminum alloy wheels
Driver and front passenger front and side-impact airbags
Anti-theft system
AM/FM/CD audio system
Air conditioning
Projector beam halogen fog lights
Roof rack system with lockable crossbars
Graphite grey tricote cloth two-tone upholstery; heated front seats



Impreza 2.5i

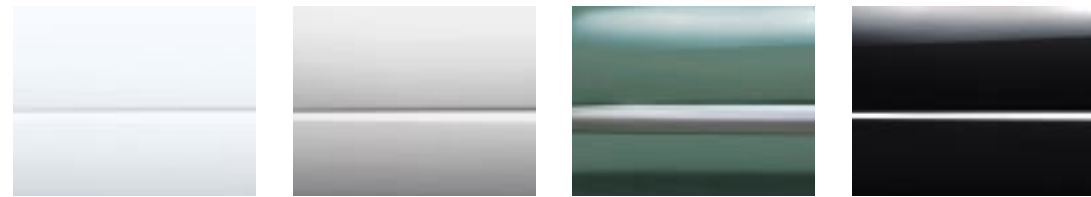
Horizontally-opposed SUBARU BOXER engine with i-Active Valve Lift System
173 horsepower and 166 lb-ft of torque
5-speed manual transmission (5MT) or optional 4-speed electronic direct controlled automatic transmission (4EAT)
Symmetrical full-time All-Wheel Drive
ABS with EBD
16", 5-spoke, aluminum alloy wheels
Driver and front passenger front and side-impact airbags
Anti-theft system
AM/FM/CD audio system
Air conditioning
Power windows with driver's window auto down;
power locks with remote keyless entry
Anthracite black woven cloth upholstery with grey side bolsters



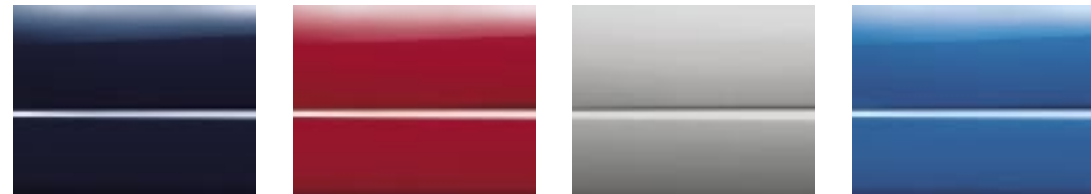
See 2006 Impreza specifications insert for full details.

Colours

With a variety of eye-catching, stylish colours to choose from, there is sure to be an Impreza that is just right for you.



Aspen White Crystal Grey Metallic Evergreen Metallic Obsidian Black Pearl



Regal Blue Pearl San Remo Red Steel Grey Metallic World Rally Blue Pearl

	2.5i Sedan	2.5i Sport Wagon	Outback Sport	WRX Sedan	WRX Sport Wagon	WRX STI
Aspen White	B	B	-	B	B	R
Crystal Grey Metallic	B	B	-	B	B	R
Evergreen Metallic	-	-	G ¹	-	-	-
Obsidian Black Pearl	B	B	G ¹	B	B	R
Regal Blue Pearl	B	B	G ¹	-	-	-
San Remo Red	B	B	G ¹	B	B	-
Steel Grey Metallic	B	B	G ²	B	B	R
World Rally Blue Pearl	-	-	-	B	B	R

B Anthracite Black interior G Graphite Grey interior R Rally Blue/Black interior - not available

¹ Steel Grey Metallic cladding ² Crystal Grey Metallic cladding

Accessories

Personalize your Subaru Impreza with a wide range of interior and exterior accessories designed to fit your lifestyle and make every drive as enjoyable and stress-free as possible. Visit your local Subaru Dealer for complete details.



Ski rack



Roof cargo box



Fork mount bike carrier



Upright bike carrier



Crossbar extensions



Cargo tray



Subwoofer



Wheel locks

Accessories may not be exactly as shown.

THINK. FEEL. DRIVE.

“Think. Feel. Drive.” is our philosophy. It’s not just a theme line, it’s an automotive ideal. It’s a belief system totally distinctive to Subaru.



THINK. It’s all about how we think about drivers. What you want today and what you’ll need tomorrow. That’s the kind of thinking that goes into everything we do.

Your brain likes it.

FEEL. It’s an emotional connection that begins with engineers and designers and extends to our drivers. Turn on the ignition and you’re in for a ride that makes you feel “wow”.

Your heart knows it.

DRIVE. It’s about driving ourselves. To keep topping ourselves. To reach new frontiers. To go off the beaten path. And building a car that helps you get there.

Your soul thrives on it.

SUBARU. It’s a company with the same spirit and goals as its owners. Not all cars can be called Subaru.

Not all car owners can be called Subaru owners. In the end, that makes all the difference in the world.

IMPREZA WRX STI

Engine	Impreza WRX STI Sedan
<i>Type</i>	2.5L Dual Overhead Cam (DOHC), 16-valve, horizontally-opposed, 4-cylinder SUBARU BOXER engine with high boost turbocharger and STI large type intercooler with manual water spray, Electronic Throttle Control and Active Valve Control System
<i>Power</i>	300 hp @ 6,000 rpm
<i>Torque</i>	300 lb-ft @ 4,000 rpm <p><i>Meets Low Emission Vehicle (LEV1) standards</i></p>

Transmission and Drivetrain	
<i>Manual</i>	6-speed manual transmission (6MT)
<i>Transmission</i>	AWD type: Driver Controlled Centre Differential (DCCD) with manual and automatic mode and cam-type mechanical limited-slip differential
<i>Drivetrain</i>	Subaru symmetrical full-time All-Wheel Drive system <p>Helical-type limited-slip front differential</p> <p>Mechanical-type limited-slip rear differential</p>

Measurements	
Fuel economy: Manual transmission (City/Hwy) (L/100km)	13.4 /9.1
Recommended minimum octane (AKI)	93
Fuel tank capacity (L)	60
Curb weight: Manual transmission (kg)	1520
Towing capacity: Maximum weight (kg) with trailer brakes [†]	906
Length (mm)	4465
Width (mm) with mirrors	2082
Height (mm)	1430
Wheelbase (mm)	2540
Minimum ground clearance (at curb weight) (mm)	145
Headroom: Front/Rear (mm)	980/932
Legroom: Front/Rear (mm)	1090/838
EPA interior volume (L)	2479
Cargo area: EPA trunk volume (L)	311

[†]See owner's manual for detailed towing instructions.

Seating and Trim
<ul style="list-style-type: none">Floor mats: "STI" Embroidered Interior: Blue Alcantara® with knit seat bolsters and STI logo seatbacks Interior: STI Blue carpet
5 Seating capacity
<ul style="list-style-type: none">Seat (driver's): 6-way manual adjustable Seats (front): Heated with high/low setting Seats (front): Semi-bucket, rally sport type Seats (rear): Contoured bench
<ul style="list-style-type: none">Seats (rear): Folding centre armrest with trunk pass-through

Chassis	
<i>Suspension</i>	4-wheel fully-independent <p>STI sport-tuned</p> <p>Front: Inverted strut with aluminum alloy lower L-arm and crossmember stiffner bar</p> <p>Rear: Inverted strut with parallel link and crossmember stiffner plates</p>
<i>Brakes</i>	Power-assisted, dual-diagonal brake system <p>Brembo® high performance brake system</p> <p>Super Sport ABS 4-channel/5-sensor/4-wheel and single g-load sensor</p> <p>Front: Ventilated discs (323 x 30 mm), 4-piston calipers</p> <p>Rear: Ventilated discs (313 x 20 mm), 2-piston calipers</p>
<i>Steering</i>	Engine speed sensitive, quick-ratio power-assisted rack and pinion <p>11.4 m minimum turning circle (curb-to-curb)</p>

Exterior	
<ul style="list-style-type: none">Body: Anti-corrosion treatment Body: Dual-sided galvanized steel Body: Rear wheel arch protector Body: Rear aerodynamic defuser Body: Under body aerodynamic covers Bumper (front): Sedan type with corner spoilers and side ducts Door mirrors: Power adjustable, foldable & heated (body colour) Doors: Four, body colour handles Exhaust: STI performance turbo type, STI muffler (stainless sport type tip) <ul style="list-style-type: none">Fog lights: Projector beam halogen Fog lights: Solid covers Headlights: Auto-off with ignition switch Headlights: Projector beam Xenon High Intensity Discharge (HID) (low beam) <ul style="list-style-type: none">Headlights: Contour multi-reflector halogen (high beam) Hood: Functional hood scoop for intercooler air flow Side moulding: Aerodynamic side ground effects Spoiler: Roof vane Spoiler: Dual element WRC box-type, integrated brake light Tire (spare): Compact T135/70 D17 (under cargo area) Tires: 225/45 R17 90W Bridgestone Potenza RE070 Summer Uni-Directional⁺⁺ Wheels: 17" x 8" BBS forged lightweight aluminum alloy Windows: Tinted Windshield: Laminated and tinted Window (rear): Defogger with timer Wipers (windshield): Variable intermittent with washer	

⁺⁺The Impreza WRX STI summer tires are high-speed capability tires best suited for highway driving under dry conditions. Summer tires are inadequate for driving on slippery roads such as on snow-covered or icy roads. If you drive your vehicle on snow covered or icy roads we strongly recommend the use of winter (snow) tires. When installing snow tires be sure to replace all four tires. Please see owner's manual for details.

WRX STI	
Safety and Security	
<ul style="list-style-type: none">Airbags (SRS): Driver and front passenger, dual-stage deployment Airbags (SRS): Driver's seat position sensor Airbags (SRS): Passenger occupant detection system with on/off indication Airbags (SRS): Front seat side-impact with head and chest protection Brake pedal: Collapsible, passive safety type Child safety: Rear door locking system Child safety: Rear seat ISO-FIX/LATCH anchor system Head restraints (front & rear): Integrated Seatbelts (front): 3-point with pretensioners and load limiters (ELR) Seatbelts (front): Height adjustable shoulder belt anchors Seatbelts (rear): 3-point, all seating positions (ALR/ELR) Seatbelts (rear): Height adjustable outboard shoulder belt anchors Security: Anti-theft system and engine immobilizer Security: Keyless entry system with panic alarm Steering column: Collapsible Structure: Dual, side-impact door beams (front & rear) Structure: Energy-absorbing crumple zones (front & rear) Structure: Hydroformed front subframe Structure: Ring-shaped reinforcement frame Trunk: Internal safety release with self-illuminating handle	
Audio	
<ul style="list-style-type: none">AM/FM/6CD Premium audio system Antenna: In-glass integrated	
4 Speakers (main)	
2 Speakers: Door tweeters	
<ul style="list-style-type: none">Speakers: Premium upgrade Speakers: Subwoofer	
Controls	
<ul style="list-style-type: none">Climate control: Air conditioning Climate control: Automatic Climate control: Air filtration system Cruise control: Steering wheel stalk controls Gear selector: Leather-wrapped with red stitching Parking brake: Leather-wrapped Pedal: Driver's foot rest Pedals: Aluminum alloy sport Shifter boot frame: Silver metallic finish Steering wheel: Leather-wrapped with red stitching	
<ul style="list-style-type: none">Steering wheel: Tilt adjustable	

WRX STI	
Convenience	
<ul style="list-style-type: none">Armrest (front): With console storage <ul style="list-style-type: none">Armrest (front): Extension with storage Cup holders (front): Console integrated Cup holders (rear): Retractable Door locks: Power, remote keyless entry Glove box: Lockable and illuminated Ignition key ring: Illuminated Light: Interior dome with off delay Light: Map spotlights Power outlet: 12V in dash Storage: Coin box Storage: Front door compartments Storage: Driver and passenger seatback pockets Visor: Dual, with mirrors Windows (power): Driver's window auto down	
Instruments	
<ul style="list-style-type: none">Clock: Digital LED in dash Gauges: Analog with red illuminated needles Gauges: Electroluminescent Gauges: Full needle sweep on start-up Gauges: STI gauge package with aluminum trim Instrument panel: Adjustable dash illumination Instrument panel: Coolant temperature gauge Instrument panel: Driver Controlled Centre Differential (DCCD) indicator Instrument panel: Fuel gauge with low fuel warning light Instrument panel: Outside temperature display Odometer: Digital, dual trip modes Speedometer: Electronically controlled analog Tachometer: 9000RPM maximum, centre mounted with STI logo Tachometer: Driver programmable engine revolutions alarm Warning lights: Intercooler water spray tank low Warning lights: ABS, airbag, brake fluid, oil pressure, check engine, door ajar	
Cargo	
<ul style="list-style-type: none">Light: Cargo area Intercooler water reservoir (See owners manual for details on use) Remote trunk release, floor mounted	

The Supplemental Restraint System (SRS airbags) affords the driver and passenger additional protection in some collisions. This system provides supplemental protection only, and seatbelts must be worn in order to avoid injuries to out-of-position occupants upon airbag deployment. The combination of SRS and seatbelts provides the best protection in a serious accident. All illustrations, specifications, features and photographs contained in this brochure are based on product information available at the time of its printing, and may not be completely accurate following its publication. Colours shown may vary due to reproduction variations in the printing process, and some vehicle parts cannot be shown in certain photographs. Subaru Canada, Inc. reserves the right to discontinue or make changes at any time, without notice or incurring obligations, to colours, materials, equipment, accessories, features, specifications and models, or to change their prices. Some models shown may be from international markets and are not available in Canada, or they may be shown with equipment or accessories which are optional (at extra cost) or only available in certain combinations, or they may be subject to product delays or not be available in Canada. Please visit our Web site for the latest information and specifications. For complete details on product updates, warranties or the Subaru C.A.R.E. program, please contact your Subaru Dealer. Subaru, Impreza, WRX STI, SUBARU BOXER, Subaru C.A.R.E. and Subaru C.A.R.E. Customer Assistance for Roadside Emergencies are registered trademarks. Printed in Canada. © 2005 Subaru Canada, Inc. 2006 Impreza model year.

SBI06E SPEC	07.05
--------------------	--------------

WRX STI	
Convenience	
<ul style="list-style-type: none">Armrest (front): With console storage <ul style="list-style-type: none">Armrest (front): Extension with storage Cup holders (front): Console integrated Cup holders (rear): Retractable Door locks: Power, remote keyless entry Glove box: Lockable and illuminated Ignition key ring: Illuminated Light: Interior dome with off delay Light: Map spotlights Power outlet: 12V in dash Storage: Coin box Storage: Front door compartments Storage: Driver and passenger seatback pockets Visor: Dual, with mirrors Windows (power): Driver's window auto down	

WRX STI	
Instruments	
<ul style="list-style-type: none">Clock: Digital LED in dash Gauges: Analog with red illuminated needles Gauges: Electroluminescent Gauges: Full needle sweep on start-up Gauges: STI gauge package with aluminum trim Instrument panel: Adjustable dash illumination Instrument panel: Coolant temperature gauge Instrument panel: Driver Controlled Centre Differential (DCCD) indicator Instrument panel: Fuel gauge with low fuel warning light Instrument panel: Outside temperature display Odometer: Digital, dual trip modes Speedometer: Electronically controlled analog Tachometer: 9000RPM maximum, centre mounted with STI logo Tachometer: Driver programmable engine revolutions alarm Warning lights: Intercooler water spray tank low Warning lights: ABS, airbag, brake fluid, oil pressure, check engine, door ajar	

WRX STI	
Cargo	
<ul style="list-style-type: none">Light: Cargo area Intercooler water reservoir (See owners manual for details on use) Remote trunk release, floor mounted	



IMPREZA

2006

SPECIFICATIONS

