

Highlander 2006

TOYOTA
TRUCK



Highlander 06

STRONG. REFINED. CIVILIZED. AND ENVIRONMENTALLY CONSCIOUS.

The 2006 Highlander – built and styled for the kind of driving you do day in, day out. Battling traffic on the freeways, lugging groceries through city streets and, on occasion, heading to the great outdoors. And with the introduction of the all-new Highlander Hybrid, which combines exhilarating V8-like performance with amazing fuel economy, the Highlander Hybrid is now one of the most environmentally conscious SUVs on the planet. The MacPherson strut-type front and rear suspension systems feature tuned shock absorbers that contribute to smooth riding as well as enhanced stability. The rigid unibody construction and high-strength cabin mean that the very structure of the Highlander is a strong first line of defence. We know you'll find all of the 2006 Highlander models an experience beyond your expectations.



Above: Highlander

4WD V6 shown in

Bluestone Metallic.

Above: Highlander Hybrid Limited shown in Millennium Silver Metallic.

Left: Highlander 4WD 7-Passenger with Limited Package shown

in Sonora Gold Pearl.



HIGHLANDER STANDARD FEATURES

- 3.3 Litre, V6, DOHC, 24-valve, VVT-i engine
- AM/FM/Cassette/CD player with 6-speakers (except Hybrid Limited)
- Air conditioning, cabin air filter
- 60/40 split bench seat with recline & slide (5-passenger rear seats, 7-passenger middle seat)
- Keyless entry with engine immobilizer
- Power heated mirrors & windshield wiper de-icer
- Tire pressure monitoring system



Above top and left: Highlander's optional leather-trimmed interior is accommodating, comfortable and supportive, and is available with the 3rd row fold-down bench seat.

Above: Highlander is equipped with safety features such as dual-stage driver and front passenger airbags (SRS), optional front seat-mounted side airbags (SRS) and roll-sensing front and rear head/side curtain airbags (SRS), as well as providing ample cargo room.

Preceding double-page spread: Highlander 4WD V6 7-Passenger with Limited Package shown in Sonora Gold Pearl.



Highlander Hybrid speedometer readouts provide varied technical information.

HIGHLANDER 268 HORSEPOWER.[†] V8-LIKE PERFORMANCE.

HYBRID EXCEPTIONAL FUEL ECONOMY.

SUPER ULTRA-LOW EMISSION VEHICLE.



The all-new Toyota Highlander Hybrid is commanded by a 3.3-litre V6 engine that works seamlessly with a high-torque electric drive motor-generator to develop a peak system output equivalent to 268 horsepower.[†] This is an environmentally friendly mid-size SUV that captures all of its traditional counterpart's interior versatility, comfort and space, including the available 3rd row fold-down bench seat for 7-passenger seating.

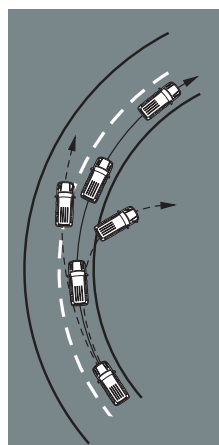
4WD-i

The Highlander Hybrid is powered by a new version of Toyota's Hybrid Synergy Drive (HSD) powertrain, specifically developed to meet the demands of an intermediate SUV. The Hybrid Synergy Drive (HSD) powertrain features an Electronically Controlled Continuously Variable Transmission (ECVT) and Toyota's first-ever application of on-demand electronic 4-wheel-drive with intelligence (4WD-i).

[†]The maximum output indicates engine plus HV battery output.



Highlander Hybrid shown in Millennium Silver Metallic.



SAFETY AND PERFORMANCE: When situations arise that could present a loss of control, it's good to know your Highlander has Vehicle Stability Control (VSC) plus Traction Control (TRAC), an advanced safety system to help counteract skidding (understeer) and spinning (oversteer) and help you maintain your course. Antilock Braking System (ABS) with Electronic Brake force Distribution (EBD) and Brake Assist is also standard equipment. EBD ensures the distribution of brake force between the front and rear wheels for optimum performance under various driving conditions. In addition, the Hybrid is the first Toyota to feature Vehicle Dynamics Integrated Management (VDIM), a microprocessor that manages safety systems to work in concert with each other. When VDIM senses a potential loss of control, it immediately orchestrates Hybrid's standard safety features as listed above.

Above: Highlander 4WD V6 7-passenger with Limited Package shown in Bluestone Metallic.

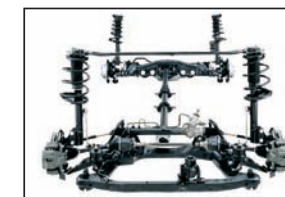


HIGHLANDER SAFETY FEATURES

- Dual-stage driver and front passenger airbag Supplemental Restraint System (SRS) • Front passenger airbag status indicator • Front seat-mounted side airbag Supplemental Restraint System (SRS) (Limited models only) • Roll-sensing front and rear head/side curtain airbag Supplemental Restraint System (SRS) (Limited models only)
- Antilock Braking System (ABS) with Brake Assist and Electronic Brake force Distribution (EBD) • Vehicle Stability Control (VSC) with Traction Control (TRAC) • Vehicle Dynamics Integrated Management (VDIM) standard on Hybrids • Full-Time 4WD (on gas models only) • Driver and front passenger seatbelt warning system • 3-point seatbelts in all seating positions • Emergency Locking Retractor (ELR) on driver's belt, Automatic /Emergency Locking Retractors (A/ELR) on passenger belts • Front seatbelt pre-tensioners with force limiters • Child Restraint System (CRS) ISO-FIX anchor brackets and four lower anchor points, located behind the seat cushion of the rear seat (2nd row bench seat on the 4WD V6 7-passenger & Hybrid Limited) • Child protector rear door locks • Front and rear energy-absorbing crumple zones • Soft energy-absorbing interior trim • Side-impact door beams • Tire pressure monitoring system



Driver and front passenger airbags and driver and front passenger pre-tensioners and force limiters are standard equipment, as are 3-point seatbelts in all seating positions.



Left: Highlander's MacPherson strut-type front and rear suspension system.

Above: 3.3 Litre, V6, DOHC, 24-valve, VVT-i engine with Sequential Multiport Electronic Fuel Injection.

DRESS IT UP. DRIVE IT OUT. Explore your options. If you really want to make a new Toyota Highlander into “your new Toyota Highlander” then check out the Toyota Accessories available for your model that will personalize it for you. And whether you choose to enhance the look, the functionality or both, your Toyota Dealer will be happy to help you select the accessories that are right for you. To find the Toyota Dealer nearest you go to toyota.ca or call 1-888-TOYOTA-8.



Hood deflector

Rear spoiler

Side window visors

Side-step bars



Highlander all dressed up with a hood deflector, side-step bars and side window visors.

Enhance the look and functionality of your new Highlander by choosing from the following list of Accessories:

- All-season mats • Block heater
- Cargo box • Cargo liner
- Cargo net • Dash accent kit
- Glass breakage sensor
- Interior bike rack • Licence plate cover
- Moonroof wind deflector • Performance exhaust
- Rear obstacle sensing system • Running boards
- Security system • SUV tent • Towing accessories

2006 HIGHLANDER COLOURS



3Q3 Salsa Red Pearl^{3,4}



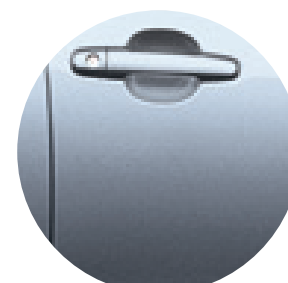
1C0 Millennium Silver Metallic^{1,2}



4R3 Sonora Gold Pearl^{3,4}



202 Black^{1,2}



8N6 Bluestone Metallic^{1,2}



8P4 Indigo Ink^{1,2}

¹ Grey Fabric.

² Grey Leather standard on Hybrid Limited, optional on 4WD V6/4WD V6 7-Seats.

³ Ivory Fabric.

⁴ Ivory Leather standard on Hybrid Limited, optional on 4WD V6/4WD V6 7-Seats.

NEW VEHICLE WARRANTY SUMMARY
No Deductibles – No Transfer Fees

Comprehensive Coverage - 3 years or 60,000 km

This warranty includes 24 hour Roadside Assistance and other benefits, as well as coverage of repairs on any part of the vehicle that is defective in material or workmanship under normal use and maintenance. Different warranties apply to original tires.

Powertrain Components - 5 years or 100,000 km

This warranty covers repairs to powertrain components that are defective in material or workmanship under normal use and maintenance.

Major Emission Control Components - 8 years or 130,000 km

This warranty covers repairs to specified major emission components that are defective in material or workmanship under normal use and maintenance.

Corrosion Perforation - 5 years unlimited distance

Any sheet metal found, under normal use, to have developed a perforation from corrosion due to defects in material or workmanship.

Hybrid-Related Components* - 8 years or 160,000 km

This warranty covers repairs to hybrid-related components that are defective in material or workmanship under normal use and maintenance.

*Includes: HV Battery, Battery Control Module, Hybrid Control Module and Inverter with Converter.

VEHICLE COVERAGE

ECP™ With Extra Care Protection you receive inflation protected coverage from mechanical failures, road emergencies, and much more. It's the most affordable way to guarantee your peace of mind. Consult your Toyota Dealer for details.

TOYOTA EXPERIENCE Toyota Dealers are dedicated to making the experience of owning a Toyota both satisfying and rewarding. Our highly skilled, Toyota-trained technicians are here to make sure you enjoy many years of trouble-free driving. “That new Toyota feeling - we help you keep it.”

TOYOTA FINANCIAL SERVICES If you're looking at leasing or financing, we're here to help. We provide competitive interest rates, flexible terms, and an easy online pre-approval process. The toughest decision should be choosing which Toyota you want. Visit us at www.toyotafinancialservices.ca.

Toyota Canada and its Dealers are proud sponsors of Canadian Special Olympics.



2006
HIGHLANDER
FEATURES

HIGHLANDER	HYBRID	HYBRID LIMITED	4WD V6	4WD V6 (7-SEATS)
INTERIOR:				
• AM/FM/Cassette/CD, 6-Speakers, Diversity Antenna	•	•	•	•
• JBL Audio, AM/FM/Stereo Cassette/CD Changer, 8-Speakers, Diversity Antenna, Steering Wheel Audio Controls		•		
• Air Conditioning, Cabin Air Filter, Rear Seat Heater Ducts	•	•	•	•
• Air Conditioning w/Automatic Climate Control, Auxiliary Rear Heater, Cabin Air Filter, Rear Seat Heater Ducts		•		
• Fabric Seat Material	•	•	•	•
• Leather Seat Surfaces		•		
• Captain Seats	•	•	•	•
• Driver & Front Passenger Seat Recline, Slide, Headrest-Vertical Adjustments, Foldable Armrests	•	•	•	•
• Driver & Front Passenger Seat Recline, Slide, Headrest-Vertical Adjustments, Foldable Armrests, Heated Power Seats		•		
• 60/40 Split Rear Bench Seat w/Fold-Down Seat Back, Recline, Slide, Headrests-Vertical Adjustments, Fold-Down Centre Armrest	•	•		
• 60/40 Split 2nd Row Bench Seat w/Fold-Down Seat Back, Recline, Slide, Headrest-Vertical Adjustments, Fold-Down Centre Armrest		•		•
• 3rd Row Bench Seat w/Fold-Down Seat Back, Headrest-Vertical Adjustment		•		•
• Power Door Locks	•	•	•	•
• Power Windows w/Driver Side Auto Up/Down	•	•	•	•
• Tachometer, Water Temperature Gauge, Dual Trip Odometer	•	•	•	•
• Multi-Information Display, Power Meter	•	•		
• Outside Temperature Gauge		•		
• Dual Vanity Mirrors	•	•	•	•
• Dual Illuminated Vanity Mirrors, Electrochromic Rear View Mirror w/Digital Compass		•		
• 4-Spoke Tilt Steering Wheel	•	•	•	•
• Leather-Wrapped Steering Wheel, Shift Knob		•		
• Simulated Leather Door Trim		•		
• Metallic Dash Accents	•	•	•	•
• Carpeting, Carpet Floor Mats	•	•	•	•
• Tonneau Cover	•	•	•	•
CONVENIENCE:				
• Cruise Control	•	•	•	•
• Digital Clock	•	•	•	•
• Front & Rear Area Lamps	•	•	•	•
• Glove Box Interior Lamp, Cargo Lamp, Door Courtesy Lamps	•	•	•	•
• Map Lamps	•	•	•	•
• Front Centre Console Box	•	•	•	•
• Cargo Area Tie-Down Rings	•	•	•	•
• Overhead Sunglass Storage	•	•	•	•
• Integrated Garage Door Opener		•		
• Driver & Front Passenger Seat Back Pockets	•	•	•	•
• Door Map Pockets	•	•	•	•
• Front & Rear Cup Holders	•	•	•	•
• Coat Hooks	•	•	•	•
• Accessory Power Outlets	•	•	•	•
• Keyless Entry, Illuminated Entry, Illuminated Ignition Key	•	•	•	•

* Airbag Notice: The 2006 Highlander features a driver & front passenger airbag Supplemental Restraint System (SRS) which activates only in a front-end collision of sufficient magnitude to inflate the bags. In moderate frontal collisions, the airbags may not inflate, in a rear or side collision the airbags are designed not to inflate, so the primary protection is provided by the lap and shoulder belt system. The 2006 Highlander Limited also features a front seat-mounted side airbag Supplemental Restraint System (SRS) and a roll-sensing front and rear head/side curtain airbag Supplemental Restraint System (SRS) which activate only in a side-impact collision of sufficient magnitude to inflate the bags. Roll-sensing airbags are designed to deploy at severe tilt degree roll or lateral G-force. *Seatbelts must be worn at all times by all occupants.*

HIGHLANDER	HYBRID	HYBRID LIMITED	4WD V6	4WD V6 (7-SEATS)
SAFETY:				
• Dual-Stage Driver & Front Passenger Airbag Supplemental Restraint System (SRS)*		•	•	•
• Front Seat-Mounted Side Airbags (SRS)*		•		
• Roll-Sensing Front & Rear Head/Side Curtain Airbag (SRS)*		•		
• Front Passenger Airbag Status Indicator		•	•	•
• Front Seatbelt Pre-Tensioners & Force Limiters		•	•	•
• Adjustable "B" Pillar Shoulder Belt Anchors		•	•	•
• All-Position 3-Point Lap & Shoulder Belts		•	•	•
• Anchor Points for Child Restraint Seats		•	•	•
• Child Protector Rear Door Locks		•	•	•
• Engine Immobilizer		•	•	•
• Anti-Theft System		•		
• Front Tow Hooks		•	•	•
• Assist Grips		•	•	•
• Remote Fuel Lid Release		•	•	•
• Door Ajar, Low Washer Fluid, Low Fuel, Tire Pressure Monitoring System Warning Indicators		•	•	•
• Driver & Front Passenger Seatbelt Warning Indicators		•	•	•
EXTERIOR:				
• 17" Aluminum Alloy Wheels, Wheel Locks		•	•	
• 16" Aluminum Alloy Wheels, Wheel Locks			•	•
• Electric Rear Window Defroster w/Timer		•	•	•
• Privacy Glass		•	•	•
• Coloured Bumpers, Door Handles, Mirrors, Grille, Bodyside Mouldings, Splash Guards, Roof Rack		•	•	•
• Limited Badging, Power Moonroof, Coloured Rear Spoiler		•		
• Dual, Heated, Power Remote-Control Mirrors		•	•	•
• Foldable Mirrors		•	•	•
• Variable Intermittent Wipers, Rear Window Wiper/Washer, Windshield Wiper De-Icer		•	•	•
• Halogen Headlamps		•	•	•
• Fog Lamps		•	•	•
• Auto Headlamp Cancel System		•	•	•
• Projector Style Low Beam Headlamps		•	•	•
• Light Control System		•		
• Light Emitting Diode (LED) Rear Taillamps		•		
PACKAGES:				
LEATHER PACKAGE:				
• Leather Seating Surfaces, Simulated Leather Door Trim, Leather-Wrapped Steering Wheel, Leather-Wrapped Shift Knob, Driver Power Seat, Driver & Front Passenger Heated Seats, Driver & Front Passenger Headrest Tilt Adjustment				○ ○
LIMITED PACKAGE:				
• Leather Package plus P225/65R17 All-Season Radials, 17" Alloy Wheels, Wheel Locks, Rear Spoiler, Automatic Climate Control, Rear Auxiliary Heater, Front Passenger Power Seat, Simulated Woodgrain Interior Trim, Dual Illuminated Vanity Mirrors, Electrochromic Rear View Mirror w/Digital Compass, Integrated Garage Door Opener, Outside Temperature Gauge, Multi-Information Display, Theft Deterrent System w/Alarm, JBL AM/FM/Cassette/CD Changer, 8-Speakers, Diversity Antenna, Steering Wheel Audio Controls, Power Moonroof, Automatic Headlamp Control System, Front Seat-Mounted Side Airbags, Roll-Sensing Front & Rear Head/Side Curtain Airbags, Limited Badging				○

• - Standard ○ - Optional

HIGHLANDER	HYBRID	HYBRID LIMITED	4WD V6	4WD V6 (7-SEATS)
MECHANICAL				
Engine	• 3.3 Litre, V6, DOHC, 24-Valve, Variable Valve Timing w/Intelligence (VVT-i), Sequential Multiport Electronic Fuel Injection	•	•	•
Compression Ratio	• 10.8:1	•	•	•
Horsepower	• 208 hp (155 kW) @ 5600 rpm (gas engine only)	•	•	•
Torque	• 215 hp (160 kW) @ 5600 rpm • 213 lb.ft. (288 N.m.) @ 4400 rpm (gas engine only) • 222 lb.ft. (301 N.m.) @ 3600 rpm	•	•	•
Electric Motor (Front)	• Permanent Magnet Motor 167 hp (123 kW) @ 4500 rpm 247 lb.ft. (335 N.m.) @ 0-1500 rpm AC 650V	•	•	
Electric Motor (Rear)	• Permanent Magnet Motor 68 hp (50 kW) @ 4610-5120 rpm 96 lb.ft. (130 N.m.) @ 0-610 rpm AC 650V	•	•	
Hybrid System Net Horsepower	• 268 hp (200 kW) ¹	•	•	
Hybrid System Net Torque	• Output will vary depending upon HV Battery state and demand on vehicle	•	•	
HV Battery	• Sealed Nickel-Metal Hydride (Ni-MH) • Maximum Power Output: 45 kW • Voltage: 288V	•	•	
Suspension	• Front: MacPherson Gas Struts, Gas Shock Absorbers, Coil Springs, Stabilizer Bar, Anti-Vibration Subframe • Rear: MacPherson Struts, Gas Shock Absorbers, Coil Springs, Stabilizer Bar, Anti-Vibration Subframe	•	•	•
Drivetrain	• Vehicle Dynamics Integrated Management (VDIM), Vehicle Stability Control (VSC), Traction Control (TRAC), On Demand Electronic 4WD • Full-Time 4WD, Vehicle Stability Control (VSC), Traction Control (TRAC)	•	•	
Transmission	• Electronically Controlled Continuously Variable Transmission (ECVT), Power Split Device, Transmission Cooler • 5-Speed Automatic, Overdrive Cancel Switch, Lock-Up Torque Converter, Transmission Cooler, ECT	•	•	
Brakes	• Power-Assisted Antilock Braking System (ABS), Electronic Brake force Distribution (EBD), Brake Assist (BA), Front Ventilated Discs, Rear Discs • Integrated Regenerative Braking System, Electronically Controlled Hydraulic Braking System	•	•	•
Steering	• Electric Rack & Pinion Power Steering • Rack & Pinion Power Steering	•	•	•
Tires	• P225/65R17, All-Season Radials, Full-Size Spare w/Alloy Wheel • P225/70R16, All-Season Radials, Full-Size Spare w/Alloy Wheel	•	•	•

• - Standard ○ - Optional ¹ The maximum output indicates engine plus HV battery output.

HIGHLANDER	HYBRID	HYBRID LIMITED	4WD V6	4WD V6 (7-SEATS)
DIMENSIONS mm (in.)				
Length	4710 (185.4)	•	•	•
	4689 (184.6)			
Width	1826 (71.9)	•	•	•
Height (Unloaded)	1735 (68.3)	•	•	•
Wheelbase	2715 (106.9)	•	•	•
Tread	Front: 1575 (62.0) Rear: 1555 (61.2)	•	•	•
Seating Capacity	5 7	•	•	•
Ground Clearance	185 (7.3)	•	•	•
Headroom	Front: 1019 (40.1) 2nd Row: 983 (38.7) Front: 1019 (40.1) 2nd Row: 1012 (39.8) 3rd Row: 820 (32.2)	•	•	•
Headroom with Moonroof	Front: 980 (38.6) 2nd Row: 960 (37.8) 3rd Row: 922 (36.3) Front: 980 (38.6) 2nd Row: 988 (38.9) 3rd Row: 820 (32.2)	•	•	○
Legroom	Front: 1090 (42.9) 2nd Row: 879 (34.6) 3rd Row: 767 (30.2) Front: 1035 (40.7) 2nd Row: 925 (36.4) 3rd Row: 767 (30.2)	•	•	•
Shoulder Room	Front: 1470 (57.9) 2nd Row: 1448 (57.0) 3rd Row: 1352 (53.2)	•	•	•
GROSS VEHICLE WEIGHT kg (lb)				
	2575 (5675)	•	•	•
	2431 (5360)			
CURB WEIGHT kg (lb)				
	1900 (4188)	•		
	1925 (4244)		•	
	1760 (3880)			•
	1785 (3935)			•
TOWING CAPACITY kg (lb)	1587 (3500)	•	•	•
PAYLOAD kg (lb)				
	390 (860)	•	•	
	526 (1159)		•	•
CARGO CAPACITY m³ (cu.ft.)				
	Behind Front Seats 2.282 (80.6)	•	•	•
	Behind 2nd Row Seats 1.124 (39.7)	•	•	•
	Behind 3rd Row Seats 0.297 (10.5)	•	•	
COEFFICIENT OF DRAG cd				
	0.34	•	•	•
TURNING CIRCLE m (ft.)				
	11.4 (37.4)	•	•	•
FUEL CAPACITY litres (gal)				
	65.0 (14.3)	•	•	
	72.5 (15.9)		•	•
FUEL CONSUMPTION RATING**				
	L / 100 km mpg			
City/Highway	7.5/8.1 38/35	•	•	
	12.7/9.0 22/31		•	•

** These estimates are based on the Government of Canada's approved criteria and testing methods. The actual fuel consumption of this vehicle may vary. Refer to the Government of Canada publication *EnerGuide Fuel Consumption Guide*.

2006
HIGHLANDER
SPECIFICATIONS*

* Toyota Canada Inc. Every effort has been made to ensure the specifications and equipment shown are accurate based on information available at time of printing. In some cases, certain changes in standard equipment, options or product delays may occur which would not be reflected in this brochure. Toyota Canada Inc. reserves the right to make these changes without notice or obligation. The Toyota website toyota.ca — or your Toyota Dealer is your best source for up-to-date information.



ECHO HATCHBACK



ECHO SEDAN



COROLLA



MATRIX



PRIUS HYBRID



CAMRY



SOLARA COUPE & CONVERTIBLE



AVALON



SIENNA



RAV4



HIGHLANDER



4RUNNER



SEQUOIA



TACOMA



TUNDRA

Toyota Canada, in partnership with the Canadian Tourism Commission, has developed a national program to promote tourism within Canada. "GET GOING CANADA" encourages Canadians to drive Canada, see its wonders, and demonstrates our pride in and dedication to "The World's Greatest Country".

For more information on Toyota vehicles, please visit your local Dealer or toyota.ca.



Toyota recognizes its duty to safeguard the environment. To support this concern, our brochure is printed on recycled paper with vegetable-based inks to be fully recyclable. PRINTED IN CANADA C0002-0536E-25 32M