

SUBARU 2007



What makes a Subaru, a Subaru?

Does your car move you? Or leave your spirit stuck in “park”?

If a reawakening is in order, consider the following. Every Subaru has been designed, engineered and tested by specialists with a single vision, fuelled by a shared passion: driving. It’s the start of what makes a Subaru, a Subaru. This passion translates into vehicles powered by innovation.

Ingenuity that generates both control and pure driving pleasure. And design that strikes to the heart and feeds the mind. All of which create an experience behind the wheel that is so much more than simply “A to B”.

At Subaru, we strive to redefine the automobile through intellect, emotion and action. It’s a philosophy that all comes together when you Think. Feel. Drive.



Rally proven, case closed.

Rules of the road: You can’t manufacture heritage. You can’t fabricate performance. And you can’t simulate the extreme conditions or punishment a car takes during World Rally competition. All Subaru vehicles share essential DNA with the Subaru World Rally Championship car. In WRC competition, the name Subaru has been synonymous with championship-winning speed, handling and reliability since 1990. With respect to the full line of Subaru models, this heritage brings rise to many desirable attributes and creates an entirely new breed of vehicle. Rugged to the core yet highly refined. Full of poise, stability and agility. Ready to face the demands of daily driving – on any continent.





Top Safety Pick^{*}
with ESC

INSURANCE INSTITUTE
FOR HIGHWAY SAFETY

5-Star
Crash Test Rating[†]



National Highway Traffic
Safety Administration's (NHTSA's)
New Car Assessment Program

B9 Tribeca 7 Passenger Limited with DVD and Navigation

*Results for 2007 Subaru B9 Tribeca model year. Ratings of "Good" are the highest rating awarded for 40-mph frontal offset, 31-mph side-impact and 20-mph rear-impact crash tests conducted by the Insurance Institute for Highway Safety (IIHS). A "Good" rating obtained in all three crash tests and the availability of Electronic Stability Control (ESC) achieves a "Top Safety Pick". [†]U.S. Government star crash test ratings are part of the National Highway Traffic Safety Administration's (NHTSA's) New Car Assessment Program (www.safercar.gov). A five-star crash test rating is the highest government rating for a) Driver and right front seating positions in frontal crash tests and b) Front and rear seating positions in side-impact crash tests.

B9 TRIBECA

Bold and beautiful, stirring and soothing.

It's safe to say that you weren't expecting this from us. (Or from anyone else, for that matter.) The 2007 Subaru B9 Tribeca is a bold departure: the most versatile, most luxurious and most refined Subaru ever. More than that, though, it's a rolling testament to what an SUV should be. Powered by a 3.0-litre, 6-cylinder SUBARU BOXER engine, the Subaru B9 Tribeca offers stirring performance. To complement that performance, there is the road-holding prowess of symmetrical full-time All-Wheel Drive (AWD) combined with the crisp handling afforded by the finely-tuned 4-wheel independent suspension. Aside from all this, the B9 Tribeca offers a meticulously crafted interior, room for up to 7 passengers and best-in-class safety features designed to protect you and all your precious cargo. (Yes, we've thought of everything.)



B9 Tribeca 5 Passenger



FORESTER

Good Rating*
Frontal, Side & Rear Impact

INSURANCE INSTITUTE
FOR HIGHWAY SAFETY

5-Star
Crash Test Rating†



National Highway Traffic
Safety Administration's (NHTSA's)
New Car Assessment Program

Forester 2.5XT

*Results for 2007 Subaru Forester model year. Ratings of "Good" are the highest rating awarded for 40-mph frontal offset, 31-mph side-impact and 20-mph rear-impact crash tests conducted by the Insurance Institute for Highway Safety (IIHS). †U.S. Government star crash test ratings are part of the National Highway Traffic Safety Administration's (NHTSA's) New Car Assessment Program (www.safercar.gov). A five-star crash test rating is the highest government rating for a) Driver and right front seating positions in frontal crash tests and b) Front and rear seating positions in side-impact crash tests.

Go your own way.

Compromise no more. With the 2007 Subaru Forester nestled safely in your garage, you have merged into the fast lane of all-around versatility, all-encompassing safety and all-weather drivability. A vehicle of intelligent size, the Subaru Forester offers the qualities you look for in an SUV (interior space and a commanding view of the road) combined with those you look for in a sedan (great fuel economy and superior driving dynamics). Add in the incomparable handling and traction afforded by symmetrical full-time AWD as well as class-leading active and passive safety features. Net result: an uncompromising SUV in the truest sense of the word. While the Subaru Forester is also tough as nails, the toughest part is choosing which version to drive. There's the well-equipped Forester 2.5X, the redoubtable 2.5X Special Edition and the impressive 2.5XS. For a more sophisticated ride, consider the 2.5XS Premium or, for more power, the spirited 2.5XT with its turbocharged 224-horsepower SUBARU BOXER engine. The Subaru Forester: Your invitation to leave compromise behind forever.



Forester 2.5X



Good Rating*
Frontal, Side & Rear Impact
INSURANCE INSTITUTE
FOR HIGHWAY SAFETY

Impreza 2.5i

*Results for 2007 Subaru Impreza model year. Ratings of "Good" are the highest rating awarded for 40-mph frontal offset, 31-mph side-impact and 20-mph rear-impact crash tests conducted by the Insurance Institute for Highway Safety (IIHS).

IMPREZA Sedan

The outward expression of an inner desire.

At Subaru, we compete in motorsports because we understand that people love to drive. More than that, though, people love to drive cars that deliver pure driving pleasure. Enter the 2007 Subaru Impreza Sedan with its symmetrical full-time AWD, the direct descendant of rally champions and the direct result of countless hours of grueling competition. With its 2.5-litre, 173-hp SUBARU BOXER engine, the Subaru Impreza 2.5i offers a compelling argument for practicality – as long as spirited performance and fuel efficiency are also part of the mix. The Impreza 2.5i Special Edition takes that winning formula and blends in a long list of standard features such as heated front seats and a premium audio system. Step up to the turbocharged WRX and you take one step closer to rally-winning glory with 224 hp, cutting-edge aerodynamics and an advanced suspension system. It's simple, really: If you love to drive, you love the 2007 Subaru Impreza Sedan.



Impreza WRX



Good Rating*
Frontal, Side & Rear Impact

INSURANCE INSTITUTE
FOR HIGHWAY SAFETY

Impreza 2.5i

*Results for 2007 Subaru Impreza model year. Ratings of "Good" are the highest rating awarded for 40-mph frontal offset, 31-mph side-impact and 20-mph rear-impact crash tests conducted by the Insurance Institute for Highway Safety (IIHS).

IMPREZA Sport Wagon

When the mind and the heart meet somewhere in the middle.

You want the performance of a sports sedan, but you need more room to stretch out. The answer: the 2007 Subaru Impreza Sport Wagon. Built on the same platform as the Impreza Sedan, the Impreza Sport Wagon brings added versatility through 60/40-split flat-folding rear seats, convenient roof rails and a large cargo area. But the Impreza Sport Wagon is not all work and no play. The 2.5i and 2.5i Special Edition offer symmetrical full-time AWD, a sport-tuned suspension and a 2.5-litre SUBARU BOXER engine that produces 173 hp and plenty of grins. The Subaru Impreza WRX Sport Wagon, meanwhile, offers the added punch of a turbocharged 2.5-litre SUBARU BOXER (224 hp), the vise-like grip of symmetrical full-time AWD and the added traction of a limited-slip viscous-type rear differential. From its sporty, aerodynamic front fascia to its easy-access rear hatch, the 2007 Subaru Impreza Sport Wagon hits all the right notes.



Impreza 2.5i Special Edition



Impreza WRX STI

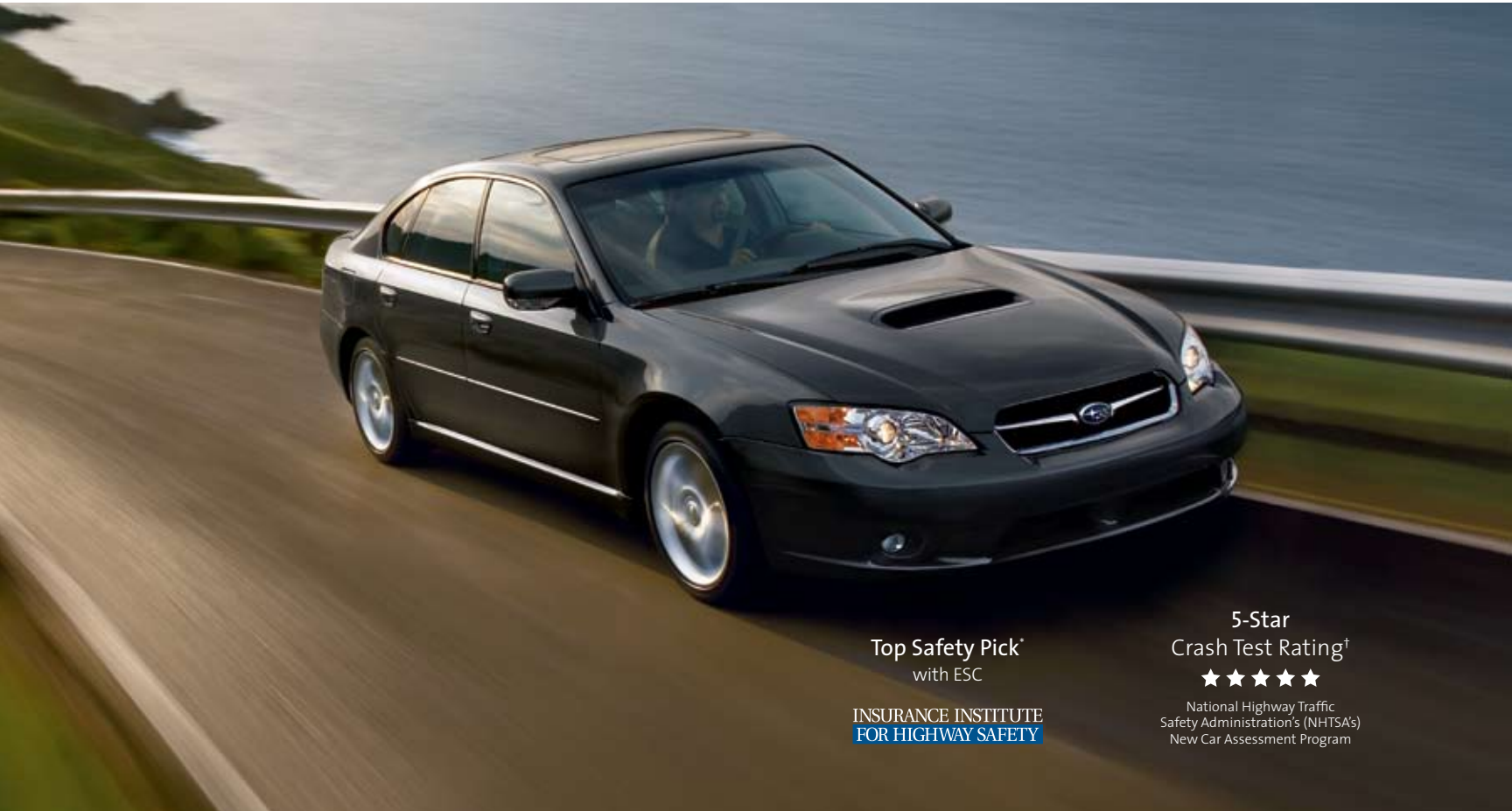
IMPREZA WRX STI

Pure adrenalin in mechanical form.

This is it, the one you've been dreaming about, the ultimate expression of the Subaru philosophy: the 2007 Subaru Impreza WRX STI. A turbocharged, 2.5-litre SUBARU BOXER engine that delivers 293 hp and 290 lb-ft of torque. A close-ratio, 6-speed manual transmission developed expressly for routing massive amounts of power. A state-of-the-art Subaru symmetrical full-time AWD system with a Driver Controlled Centre Differential (DCCD) to direct precisely where all that power goes. These characteristics combine to create earth-shattering acceleration, superior grip and unmatched handling. And all of this performance is wrapped in a stunning package that is guaranteed to leave friends and neighbours slack-jawed with envy. The 2007 Subaru Impreza WRX STI: barely street legal, completely desirable.



Impreza WRX STI



Legacy 2.5GT spec.B

Top Safety Pick[®]
with ESC

INSURANCE INSTITUTE
FOR HIGHWAY SAFETY

5-Star
Crash Test Rating[†]



National Highway Traffic
Safety Administration's (NHTSA's)
New Car Assessment Program

*Ratings of "Good" are the highest rating awarded for 40-mph frontal offset, 31-mph side-impact and 20-mph rear-impact crash tests conducted by the Insurance Institute for Highway Safety (IIHS) and applies to all 2007 Subaru Legacy models. A "Good" rating obtained in all three crash tests and the availability of Electronic Stability Control (ESC) achieves a Top Safety Pick[®], which was awarded to the 2007 Subaru Legacy 2.5GT spec.B. †Results for 2007 Subaru Legacy model year. U.S. Government star crash test ratings are part of the National Highway Traffic Safety Administration's (NHTSA's) New Car Assessment Program (www.safercar.gov). A five-star crash test rating is the highest government rating for a) Driver and right front seating positions in frontal crash tests and b) Front and rear seating positions in side-impact crash tests.

LEGACY Sedan

Take the long way home.

Sophisticated style meets advanced engineering in the 2007 Subaru Legacy Sedan. This line of sports sedans begins with a rugged chassis that sets the stage for a fully independent suspension system optimized for ride comfort and superior handling. Next: Subaru symmetrical full-time AWD, the most efficient way to generate grip and traction, regardless of weather or road conditions. Then, the final piece of the puzzle: power from the SUBARU BOXER engine. In the case of the Legacy 2.5i, a 2.5-litre engine that delivers 175 hp. For the Legacy 2.5GT, a turbocharged DOHC 2.5-litre engine with 243 hp. The 2.5GT also comes equipped with SI-DRIVE, a system that lets you select among three different driving modes. Finally, there is the aggressive Legacy 2.5GT spec.B with sporty enhancements like a 6-speed manual transmission, 18" alloy wheels and a Bilstein® suspension system, just to name a few. No matter which Subaru Legacy Sedan you choose, though, stylish performance is right around the corner.



Legacy 2.5i



Good Rating*
Frontal, Side & Rear Impact

INSURANCE INSTITUTE
FOR HIGHWAY SAFETY

5-Star
Crash Test Rating†



National Highway Traffic
Safety Administration's (NHTSA's)
New Car Assessment Program

LEGACY Wagon

A wagon in name alone.

Technically, the 2007 Subaru Legacy Wagon is a wagon. This wagon, however, is as sleek and performance-oriented as any sports sedan on the road; it just happens to offer more versatility with 60/40-split flat-folding rear seats, low-profile roof rails and a large cargo area. Under the skin, the Legacy Wagon offers the same driving excitement as the Legacy Sedan. This means: your choice of a 175-hp SUBARU BOXER engine (as found in the 2.5i) or a 243-hp turbocharged boxer engine (in the 2.5GT). Like the 2.5i Sedan, the Legacy 2.5i Wagon is also offered with a Touring or Limited upgrade package. Of course, no matter which model you select, you still experience the superior handling and traction capabilities of symmetrical full-time AWD. All models also boast a healthy list of standard features, from 16" aluminum alloy wheels and 6 airbags in the base 2.5i up to the twin-moonroof and premium audio system in the 2.5GT. The 2007 Subaru Legacy Wagon is a stylish ride for the discerning driver.



Legacy 2.5i (Touring Package)

Legacy 2.5GT

*Results for 2007 Subaru Legacy model year. Ratings of "Good" are the highest rating awarded for 40-mph frontal offset, 31-mph side-impact and 20-mph rear-impact crash tests conducted by the Insurance Institute for Highway Safety (IIHS). †Results for 2007 Subaru Legacy model year. U.S. Government star crash test ratings are part of the National Highway Traffic Safety Administration's (NHTSA's) New Car Assessment Program (www.safercar.gov). A five-star crash test rating is the highest government rating for driver and right front seating positions in frontal crash tests. Side-impact crash tests not conducted for the Subaru Legacy Wagon.



5-Star
Crash Test Rating†



National Highway Traffic
Safety Administration's (NHTSA's)
New Car Assessment Program

OUTBACK

Cue the adventure.

Whatever you may have planned, the 2007 Subaru Outback is ready to take you there. A crossover with genuine go-anywhere capability, the Outback offers the advantages of symmetrical full-time AWD combined with a raised suspension to clear more rugged terrain. The Outback 2.5i is powered by a 2.5-litre SUBARU BOXER that delivers 175 hp, while the 2.5XT features a 243-hp turbocharged 2.5-litre engine enhanced by the innovative SI-DRIVE system. The Outback 3.0R, meanwhile, brings a smooth 3.0-litre, 6-cylinder SUBARU BOXER and 245 hp to the table. All three models come well-equipped in standard form. The 2.5i is also available with an optional Touring or Limited Package and the 3.0R can be enhanced with the Premier Package, which includes leather seating surfaces, a twin-moonroof, a navigation system and Vehicle Dynamics Control (VDC). Also included on every 2007 Outback: class-leading safety standards. (Adventure doesn't need to be foolhardy.)



Outback 2.5i

Outback 3.0R

†Results for 2007 Subaru Outback model year. U.S. Government star crash test ratings are part of the National Highway Traffic Safety Administration's (NHTSA's) New Car Assessment Program (www.safercar.gov). A five-star crash test rating is the highest government rating for a) Driver and right front seating positions in frontal crash tests and b) Front and rear seating positions in side-impact crash tests.

Strike a balance, get a grip, take control.

For more than three decades, this has been the core philosophy that has led to the development of every Subaru vehicle. In that time, our engineers have perfected a combination unique to the industry: the SUBARU BOXER engine and the totally linear drivetrain layout called the Subaru symmetrical full-time All-Wheel Drive (AWD) system.

In this layout, all drivetrain components – the engine, transmission, driveshaft, and front and rear differentials – are logically aligned close to the centre point of the vehicle. The benefits of a balanced, symmetrical drivetrain are both numerous and substantial.

First, it gives every Subaru heightened stability and ideal weight distribution side to side. In most conditions, the compact design also allows for linear, controllable, full-time power to be distributed to all four wheels simultaneously – which translates into superior traction and control, especially when cornering.



In addition, the layout provides the perfect foundation for a 4-wheel fully independent suspension system that delivers precise handling and incredible stability without sacrificing ride quality. The long, equal-length axle shafts allow for maximum suspension travel, superior balance at all four wheels and maximum contact between the tires and the road, even when the road surface changes. The suspension can then be further tuned to virtually eliminate torque steer and create superior driving dynamics that allow the vehicle's refined and sporty nature to show through.

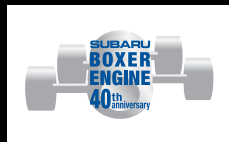
Why is symmetrical full-time All-Wheel Drive a better solution? Simply: balance, grip, control.

SYMMETRICAL AWD

Boxer Engine

Smooth operators.

In the horizontally-opposed SUBARU BOXER engine, the motion of the right bank of pistons counteracts that of the left bank, thereby balancing each other out and reducing engine vibration. This intrinsically smooth design is also compact and sits low in the engine compartment, giving each Subaru vehicle a low centre of gravity. This, in turn, helps improve the AWD handling and stability, while reducing body roll, without having to resort to an overly stiff suspension.



The 2.5-litre SOHC SUBARU BOXER engine employs the i-Active Valve Lift System to create ample power while maintaining excellent fuel economy and low emissions.



The 2.5-litre DOHC turbocharged and intercooled SUBARU BOXER engine* uses the Active Valve Control System to ensure rally-inspired peak performance.



The 3.0-litre DOHC 6-cylinder SUBARU BOXER engine works with a direct variable valve-lifting system and Active Valve Control System, producing a broad torque band and a smooth ride.



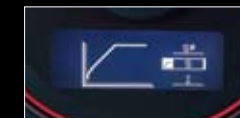
SI-DRIVE

The very definition of a “triple-threat”.

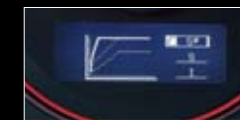
The SI-DRIVE (SUBARU Intelligent Drive) system allows the driver to choose among three different modes with different engine and transmission characteristics. By switching modes, the driver triggers changes to the engine management system that then modify the function of the variable valve timing, electronic throttle and turbocharger. SI-DRIVE is available exclusively on the 2007 Subaru Outback 2.5XT, Legacy 2.5GT and 2.5GT spec.B.



Intelligent Mode (I) delivers heightened smoothness in low-traction conditions and ideal fuel economy; it's perfect for driving around town or motoring down the highway.



Sport Mode (S) is for all-around use; it provides linear throttle response for everyday driving situations and extra engine power when needed.



Sport Sharp Mode (S#) exploits the full potential of the SUBARU BOXER engine; it delivers instant throttle response for maximum enjoyment.



* This engine was voted Best 2.0 to 2.5-litre engine in the International Engine of the Year Awards 2006, presented by UKIP Media & Events Automotive Magazines.

Active Safety

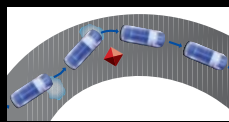
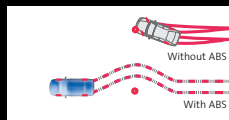
The first line of defence.

Active safety features are those that help the driver avoid potentially dangerous situations. For over more than 30 years, Subaru has developed and perfected an active safety system without peer: Subaru symmetrical full-time AWD. With this system, standard on every Subaru model, you experience sure-footed traction and control over everything from rain-slicked city streets to icy highways and gravel-covered country roads.

Optimum visibility is key. Subaru vehicles are designed to offer as clear and unobstructed a view of the road as possible. The seating position is high and the glass area is large so that blind spots are minimized, enhancing the driver's ability to identify potential hazards.

Subaru vehicles use an advanced **Anti-lock Braking System (ABS)** that monitors each wheel individually to prevent any one from locking. All models also feature **Electronic Brake-force Distribution (EBD)**, which enhances brake balance front to rear to shorten stopping distances.

Vehicle Dynamics Control (VDC) works with the AWD transmission to monitor steering wheel angle, engine speed, and gear and brake status to maintain optimum stability and traction. Standard on the 2007 Outback 3.0R with Premier Package, Legacy 2.5GT spec.B and B9 Tribeca models.



Passive Safety

Travel safe, rest assured.

Passive safety systems are those that come into play when an accident is unavoidable. When this happens, it's comforting to know that every Subaru vehicle has been designed to offer a 360-degree barrier of protection for all occupants. And that Subaru has received stellar crash test results for all models from both the Insurance Institute for Highway Safety and National Highway Traffic Safety Administration.

The **advanced ring-shaped reinforcement frame** combines the roof, door pillars, window pillars and floor into one interconnected, energy-absorbing cell. This cell helps to dissipate impact energy coming from any direction.

All models come standard with dual **front airbags** with dual-stage deployment and built-in occupant sensors and dual **front seat side-impact airbags**. The 2007 Outback, Legacy and B9 Tribeca also come with dual **side curtain airbags**.

Active front seat head restraints that automatically reduce the distance between the passenger and the headrest in the event of a rear-end collision are standard on all models apart from the 2007 Impreza 2.5i Special Edition, WRX and WRX STI.



B9 Tribeca 5 Passenger

Horizontally-opposed, 6-cylinder, 3.0L, SUBARU BOXER engine with Active Valve Lift System and Active Valve Control System
245 horsepower* and 215 lb-ft of torque*

5-speed electronic direct control automatic transmission with SPORTSHIFT™ (SEAT SS)

Subaru symmetrical full-time All-Wheel Drive with Variable Torque Distribution (VTD)

Vehicle Dynamics Control (VDC) system, Traction Control System (TCS) and Brake Assist

Engine immobilizer system and anti-theft security system

Driver and front passenger front and side-impact airbags; side curtain airbags with roll over sensor (first and second row)

Power tilting and sliding glass moonroof

AM/FM/CD/MP3 audio system with 6 speakers, auxiliary audio input and pre-wired for XM® Satellite Radio

Automatic dual-zone climate control with air filtration

Heated, power adjustable front seats

Premium cloth upholstery



SEAT SS (L/100km): City 13.3/Hwy 9.5

B9 Tribeca 5 Passenger Limited

Horizontally-opposed, 6-cylinder, 3.0L, SUBARU BOXER engine with Active Valve Lift System and Active Valve Control System
245 horsepower* and 215 lb-ft of torque*

5-speed electronic direct control automatic transmission with SPORTSHIFT™ (SEAT SS)

Subaru symmetrical full-time All-Wheel Drive with Variable Torque Distribution (VTD)

Vehicle Dynamics Control (VDC) system, Traction Control System (TCS) and Brake Assist

Engine immobilizer system and anti-theft security system

Driver and front passenger front and side-impact airbags; side curtain airbags with roll over sensor (first and second row)

Power tilting and sliding glass moonroof

AM/FM/6CD/MP3 premium audio system with 8 speakers, subwoofer, auxiliary audio input and pre-wired for XM® Satellite Radio

Automatic dual-zone climate control with air filtration

Heated, power adjustable front seats with two position memory feature on driver's seat

Leather upholstery and interior trim



SEAT SS (L/100km): City 13.3/Hwy 9.5

*Peak horsepower and torque values are determined using the new SAE J1349 (Rev. 8/04) standard.

B9 Tribeca 5 Passenger Limited with Navigation

Horizontally-opposed, 6-cylinder, 3.0L, SUBARU BOXER engine with Active Valve Lift System and Active Valve Control System
245 horsepower* and 215 lb-ft of torque*

5-speed electronic direct control automatic transmission with SPORTSHIFT™ (SEAT SS)

Subaru symmetrical full-time All-Wheel Drive with Variable Torque Distribution (VTD)

Vehicle Dynamics Control (VDC) system, Traction Control System (TCS) and Brake Assist

Engine immobilizer system and anti-theft security system

Driver and front passenger front and side-impact airbags; side curtain airbags with roll over sensor (first and second row)

Power tilting and sliding glass moonroof

AM/FM/6CD/MP3 premium audio system with 8 speakers, subwoofer, auxiliary audio input and pre-wired for XM® Satellite Radio

Heated, power adjustable front seats with two position memory feature on driver's seat

GPS DVD-based navigation system, monitor system with touch-screen display and rear view camera

Leather upholstery and interior trim



SEAT SS (L/100km): City 13.3/Hwy 9.5

B9 Tribeca 7 Passenger Limited with DVD and Navigation

Horizontally-opposed, 6-cylinder, 3.0L, SUBARU BOXER engine with Active Valve Lift System and Active Valve Control System
245 horsepower* and 215 lb-ft of torque*

5-speed electronic direct control automatic transmission with SPORTSHIFT™ (SEAT SS)

Subaru symmetrical full-time All-Wheel Drive with Variable Torque Distribution (VTD)

Vehicle Dynamics Control (VDC) system, Traction Control System (TCS) and Brake Assist

Driver and front passenger front and side-impact airbags; side curtain airbags with roll over sensor (first and second row)

Engine immobilizer system and anti-theft security system

Power tilting and sliding glass moonroof

AM/FM/6CD/MP3 premium audio system with 8 speakers, subwoofer, auxiliary audio input and pre-wired for XM® Satellite Radio

GPS DVD-based navigation system, monitor system with touch-screen display and rear view camera

DVD entertainment system with 9" screen and wireless headphones (2) and rear auxiliary input

Leather upholstery and interior trim;
50/50-split, flat-folding third row seats



SEAT SS (L/100km): City 13.3/Hwy 9.5

For full vehicle specifications, visit subaru.ca

Forester 2.5X

Horizontally-opposed, 4-cylinder, 2.5L, SUBARU BOXER engine with i-Active Valve Lift System

173 horsepower* and 166 lb-ft of torque*

5-speed manual transmission (5MT) with Hill Holder system or optional 4-speed electronic direct control automatic transmission (4EAT)

Subaru symmetrical full-time All-Wheel Drive

Anti-lock Braking System with Electronic Brake-force Distribution

Driver and front passenger front and side-impact airbags

Anti-theft security system

16" styled steel wheels

Textured Grey bodyside cladding

Power adjustable, foldable, heated mirrors


Multi-reflector halogen fog lights

AM/FM/CD audio system with 4 speakers

Air conditioning with air filtration

Moquette cloth upholstery



 5MT (L/100km): City 10.7/Hwy 7.5
4EAT (L/100km): City 10.4/Hwy 7.7

Forester 2.5X Special Edition

Includes all Forester 2.5X features as well as:

Heated front seats

Power sliding large glass moonroof


Special Edition badging

Retractable cargo cover and cargo tray/protective mat

Splash guards

16" aluminum alloy wheels



 5MT (L/100km): City 10.7/Hwy 7.5
4EAT (L/100km): City 10.4/Hwy 7.7

Forester 2.5XS

Horizontally-opposed, 4-cylinder, 2.5L, SUBARU BOXER engine with i-Active Valve Lift System

173 horsepower* and 166 lb-ft of torque*

5-speed manual transmission (5MT) with Hill Holder system or optional 4-speed electronic direct control automatic transmission (4EAT)

Subaru symmetrical full-time All-Wheel Drive with limited-slip viscous-type rear differential

Driver and front passenger front and side-impact airbags

Anti-theft security system

16" aluminum alloy wheels


Urban Grey Metallic bodyside cladding; lockable crossbars

Power adjustable, foldable and heated body colour door mirrors with integrated LED turn signals

AM/FM/CD audio system with 4 speakers

Moquette cloth upholstery; heated front seats



 5MT (L/100km): City 10.7/Hwy 7.5
4EAT (L/100km): City 10.4/Hwy 7.7

*Peak horsepower and torque values are determined using the new SAE J1349 (Rev. 8/04) standard.

Forester 2.5XS Premium

Horizontally-opposed, 4-cylinder, 2.5L, SUBARU BOXER engine with i-Active Valve Lift System

173 horsepower* and 166 lb-ft of torque*

5-speed manual transmission (5MT) with Hill Holder system or optional 4-speed electronic direct control automatic transmission (4EAT)

Subaru symmetrical full-time All-Wheel Drive with limited-slip viscous-type rear differential

Driver and front passenger front and side-impact airbags

Anti-theft security system

16" aluminum alloy wheels

Power sliding large glass moonroof

Monotone bodyside cladding and splash guards


Automatic climate control with air filtration

AM/FM/6CD/MP3/WMA premium audio system with 6 speakers, auxiliary audio input and pre-wired for SIRIUS® Satellite Radio

Heated front seats

Leather upholstery and interior trim



 5MT (L/100km): City 10.7/Hwy 7.5
4EAT (L/100km): City 10.4/Hwy 7.7

Forester 2.5XT

Turbocharged and intercooled, horizontally-opposed, 4-cylinder, 2.5L, SUBARU BOXER engine with Active Valve Control System

224 horsepower* and 226 lb-ft of torque*

5-speed manual transmission (5MT) with Hill Holder system or optional 4-speed electronic direct control automatic transmission (4EAT)

Subaru symmetrical full-time All-Wheel Drive with limited-slip viscous-type rear differential

Driver and front passenger front and side-impact airbags

Engine immobilizer system and anti-theft security system

17" aluminum alloy wheels

Power sliding large glass moonroof


Xenon High Intensity Discharge (HID) headlights (low beam)

AM/FM/6CD/MP3/WMA premium audio system with 6 speakers, subwoofer, auxiliary audio input and pre-wired for SIRIUS® Satellite Radio

Heated front seats

Leather upholstery and interior trim



 5MT (L/100km): City 11.7/Hwy 8.0
4EAT (L/100km): City 11.4/Hwy 8.5

For full vehicle specifications, visit subaru.ca

Impreza 2.5i

Horizontally-opposed, 4-cylinder, 2.5L, SUBARU BOXER engine with i-Active Valve Lift System

173 horsepower* and 166 lb-ft of torque*

5-speed manual transmission (5MT) or optional 4-speed electronic direct control automatic transmission (4EAT)

Subaru symmetrical full-time All-Wheel Drive

Anti-lock Braking System with Electronic Brake-force Distribution

Driver and front passenger front and side-impact airbags

Anti-theft security system

16" aluminum alloy wheels

Power adjustable, foldable, heated mirrors


AM/FM/CD audio system with 4 speakers

Air conditioning with air filtration

Power windows with driver's window auto down; power locks with remote keyless entry

Woven cloth upholstery



 5MT (L/100km): City 10.7/Hwy 7.5
4EAT SS (L/100km): City 10.4/Hwy 7.7

Impreza 2.5i Special Edition

Includes all Impreza 2.5i features as well as:

Power tilting and sliding glass moonroof

AM/FM/6CD/MP3/WMA premium audio system with 6 speakers, auxiliary audio input and pre-wired for SIRIUS® Satellite Radio

Heated front seats

16" aluminum alloy wheels (7-spoke design)

Single outlet muffler (stainless steel tip)

Semi-bucket, rally sport type front seats

Projector beam halogen fog lights

Leather-wrapped steering wheel

Body coloured door mirrors


Automatic climate control with air filtration

Mesh grille with chrome trim

Retractable cargo cover (Sport Wagon only)

Special Edition badging



 5MT (L/100km): City 10.7/Hwy 7.5
4EAT SS (L/100km): City 10.4/Hwy 7.7

*Peak horsepower and torque values are determined using the new SAE J1349 (Rev. 8/04) standard.

Impreza WRX

Turbocharged and intercooled, horizontally-opposed, 4-cylinder, 2.5L, SUBARU BOXER engine with Active Valve Control System

224 horsepower* and 226 lb-ft of torque*

5-speed manual transmission (5MT)

Subaru symmetrical full-time All-Wheel Drive with viscous-type limited-slip rear differential

Driver and front passenger front and side-impact airbags

Engine immobilizer system and anti-theft system

17" aluminum alloy wheels with high performance tires

AM/FM/6CD/MP3/WMA premium audio system with 6 speakers, auxiliary audio input and pre-wired for SIRIUS® Satellite Radio

Automatic climate control and air filtration


Projector beam halogen fog lights

Power tilting and sliding glass moonroof

Heated rally type front seats

Woven cloth upholstery



 5MT (L/100km): City 11.7/Hwy 8.0

Impreza WRX STI

High-boost turbocharged and intercooled, horizontally-opposed, 4-cylinder, 2.5L, high performance SUBARU BOXER engine with Active Valve Control System

293 horsepower* and 290 lb-ft of torque*

6-speed manual transmission (6MT)

Subaru symmetrical full-time All-Wheel Drive with TORSEN® limited-slip rear differential, helical-type limited-slip front differential and Driver Controlled Centre Differential (DCCD)

Brembo® high-performance brakes with Super Sport Anti-lock Braking System and Electronic Brake-force Distribution

Driver and front passenger front and side-impact airbags

Engine immobilizer system and anti-theft system

17" BBS forged aluminum alloy wheels with ultra high-performance Bridgestone summer tires[†]

Xenon High-Intensity Discharge (HID) headlights (low beam)

Dual element WRC box-type rear spoiler; rear roof vane spoiler

AM/FM/6CD/MP3/WMA premium audio system with 6 speakers, auxiliary audio input and pre-wired for SIRIUS® Satellite Radio

Blue Alcantara® and knit cloth upholstery; heated rally type front seats



 6MT (L/100km): City 12.6/Hwy 8.8

For full vehicle specifications, visit subaru.ca

[†]Please see owner's manual for usage details.

Legacy 2.5i

Horizontally-opposed, 4-cylinder, 2.5L, SUBARU BOXER engine with i-Active Valve Lift System

175 horsepower* and 169 lb-ft of torque*

5-speed manual transmission (5MT) or optional 4-speed electronic direct control automatic transmission with SPORTSHIFT™ (4EAT SS)

Subaru symmetrical full-time All-Wheel Drive

Driver and front passenger front and side-impact airbags; side curtain airbags

Engine immobilizer system and anti-theft security system

16" aluminum alloy wheels


Low-profile roof rails (Wagon only)

AM/FM/CD/MP3/WMA audio system with 6 speakers, auxiliary audio input and pre-wired for XM® Satellite Radio

Air conditioning with air filtration

Premium woven cloth upholstery; split, flat-folding rear seats (Sedan and Wagon)



 5MT (L/100km): City 10.7/Hwy 7.5
4EAT SS (L/100km): City 10.3/Hwy 7.2

Legacy 2.5i (Touring Package)

Includes all Legacy 2.5i features as well as:

17" aluminum alloy wheels

Power tilting and sliding glass moonroof

Heated front seats

8-way power adjustable driver's seat with lumbar support


Power adjustable, foldable and heated body colour door mirrors with integrated LED turn signals

Projector beam halogen fog lights

Retractable cargo cover (Wagon only)

Windshield wiper de-icer



 5MT (L/100km): City 10.7/Hwy 7.5
4EAT SS (L/100km): City 10.3/Hwy 7.2

Legacy 2.5i (Limited Package)

Includes all Legacy 2.5i features as well as:

Power tilting and sliding glass moonroof

Heated front seats; 8-way power adjustable driver's seat with lumbar support

AM/FM/6CD/MP3/WMA premium audio system with SRS WOW™ audio enhancement, 6 speakers, auxiliary audio input and pre-wired for XM® Satellite Radio

17" aluminum alloy wheels

Available in Automatic Transmission only

Leather upholstery and woodgrain trim, leather-wrapped steering wheel, parking brake and gear selector

Projector beam halogen fog lights


Automatic dual-zone climate control with air filtration

Windshield wiper de-icer

Lockable crossbars (Wagon only)

Cargo area tray and retractable cargo cover (Wagon only)



 5MT (L/100km): City 10.7/Hwy 7.5
4EAT SS (L/100km): City 10.3/Hwy 7.2

*Peak horsepower and torque values are determined using the new SAE J1349 (Rev. 8/04) standard.

Legacy 2.5GT

Turbocharged and intercooled, horizontally-opposed, 4-cylinder, 2.5L, SUBARU BOXER engine with Active Valve Control System and SI-DRIVE

243 horsepower* and 241 lb-ft of torque*

5-speed manual transmission (5MT) or optional 5-speed electronic direct control automatic transmission with SPORTSHIFT™ (5EAT SS)

Subaru symmetrical full-time All-Wheel Drive with limited-slip viscous-type rear differential

Driver and front passenger front and side-impact airbags; side curtain airbags

Engine immobilizer system and anti-theft security system

17" aluminum alloy wheels (6-spoke)

Power tilting and sliding, glass moonroof


Projector beam halogen fog lights

AM/FM/6CD/MP3/WMA premium audio system with SRS WOW™ audio enhancement, 6 speakers, auxiliary audio input and pre-wired for XM® Satellite Radio

Heated, power adjustable, sport type front seats

Perforated leather upholstery and woodgrain trim



 5MT (L/100km): City 11.7/Hwy 8.0
5EAT SS (L/100km): City 12.1/Hwy 8.6

Legacy 2.5GT spec.B

Turbocharged and intercooled, horizontally-opposed, 4-cylinder, 2.5L, SUBARU BOXER engine with Active Valve Control System, SI-DRIVE and Vehicle Dynamics Control (VDC) system

243 horsepower* and 241 lb-ft of torque*

6-speed manual transmission (6MT)

Subaru symmetrical full-time All-Wheel Drive with TORSEN® limited-slip rear differential

Driver and front passenger front and side-impact airbags; side curtain airbags

Engine immobilizer system and anti-theft security system

Bilstein® sport-tuned suspension; 18" aluminum alloy wheels

GPS DVD-based navigation system with touch-screen display and monitor system

Leather-wrapped MOMO® steering wheel with audio controls


Power tilting and sliding glass moonroof

AM/FM/6CD/MP3/WMA premium audio system with SRS WOW™ audio enhancement, 6 speakers, auxiliary audio input and pre-wired for XM® Satellite Radio

Heated front seats; two-position memory feature on driver's seat

Leather and Blue Alcantara® upholstery and interior trim



 6MT (L/100km): City 12.3/Hwy 8.2

For full vehicle specifications, visit subaru.ca

Outback 2.5i

Horizontally-opposed, 4-cylinder, 2.5L, SUBARU BOXER engine with i-Active Valve Lift System

175 horsepower* and 169 lb-ft of torque*

5-speed manual transmission (SMT) or optional 4-speed electronic direct control automatic transmission with SPORTSHIFT™ (4EAT SS)

Subaru symmetrical full-time All-Wheel Drive

Driver and front passenger front and side-impact airbags; side curtain airbags

Engine immobilizer and anti-theft security system

16" aluminum alloy wheels


Raised-profile roof rails

AM/FM/CD/MP3/WMA audio system with 6 speakers, auxiliary audio input and pre-wired for XM® Satellite Radio

Air conditioning with air filtration

Premium woven cloth upholstery



 SMT (L/100km): City 10.3/Hwy 7.6
4EAT SS (L/100km): City 10.6/Hwy 7.6

Outback 2.5i (Touring Package)

Includes all Outback 2.5i features as well as:

17" aluminum alloy wheels

Power tilting and sliding, twin panel glass moonroof

Heated front seats

8-way power adjustable driver's seat with lumbar support

Power adjustable, foldable and heated body colour door mirrors with integrated LED turn signals

Limited-slip viscous-type rear differential

Retractable cargo cover and cargo area tray;
12V power outlet in cargo area


Lockable crossbars

Splash guards; front bumper underguard

Body colour door handles

Windshield wiper de-icer



 SMT (L/100km): City 10.3/Hwy 7.6
4EAT SS (L/100km): City 10.6/Hwy 7.6

Outback 2.5i (Limited Package)

Includes all Outback 2.5i features as well as:

17" aluminum alloy wheels; splash guards

Power tilting and sliding twin panel glass moonroof

Heated front seats; 8-way power adjustable driver's seat with lumbar support

AM/FM/6CD/MP3/WMA premium audio system with SRS WOW™ audio enhancement, 6 speakers, auxiliary audio input and pre-wired for XM® Satellite Radio

Limited-slip viscous-type rear differential

Available in Automatic Transmission only

Leather upholstery and woodgrain trim, leather-wrapped steering wheel, parking brake and gear selector


Retractable cargo cover and cargo area tray;
12V power outlet in cargo area

Automatic dual-zone climate control with air filtration

Lockable crossbars; windshield wiper de-icer

Body colour door handles and mirrors



 SMT (L/100km): City 10.3/Hwy 7.6
4EAT SS (L/100km): City 10.6/Hwy 7.6

*Peak horsepower and torque values are determined using the new SAE J1349 (Rev. 8/04) standard.

Outback 2.5XT

Turbocharged and intercooled, horizontally-opposed, 4-cylinder, 2.5L, SUBARU BOXER engine with Active Valve Control System and SI-DRIVE

243 horsepower* and 241 lb-ft of torque*

5-speed manual transmission (SMT) or optional 5-speed electronic direct control automatic transmission with SPORTSHIFT™ (SEAT SS)

Subaru symmetrical full-time All-Wheel Drive with limited-slip viscous-type rear differential

Engine immobilizer and anti-theft security system

Driver and front passenger front and side-impact airbags; side curtain airbags


17" aluminum alloy wheels

Power tilting and sliding twin-panel glass moonroof

AM/FM/6CD/MP3/WMA premium audio system with SRS WOW™ audio enhancement, 6 speakers, auxiliary audio input and pre-wired for XM® Satellite Radio

Perforated leather upholstery and woodgrain trim; heated, power adjustable, sport type front seats



 SMT (L/100km): City 11.3/Hwy 8.1
SEAT SS (L/100km): City 11.7/Hwy 8.4

Outback 3.0R

Horizontally-opposed, 6-cylinder, 3.0L, SUBARU BOXER engine with Active Valve Lift System and Active Valve Control System

245 horsepower* and 215 lb-ft of torque*

5-speed electronic direct control automatic transmission with SPORTSHIFT™ (SEAT SS)

Subaru symmetrical full-time All-Wheel Drive with limited-slip viscous-type rear differential

Engine immobilizer and anti-theft security system


Driver and front passenger front and side-impact airbags; side curtain airbags

AM/FM/6CD/MP3/WMA premium audio system with SRS WOW™ audio enhancement, 6 speakers, auxiliary audio input and pre-wired for XM® Satellite Radio

Front bumper underguard

Premium woven cloth upholstery; heated front seats



 SEAT SS (L/100km): City 12.2/Hwy 8.5

Outback 3.0R (Premier Package)

Includes all Outback 3.0R features, as well as:

Vehicle Dynamics Control (VDC) and Traction Control System (TCS)
GPS DVD-based navigation system with touch-screen display and monitor system

Power tilting and sliding twin-panel glass moonroof

Leather upholstery and woodgrain trim


Leather-wrapped/Elm woodgrain MOMO® steering wheel with audio controls

4-way power adjustable passenger seat

Premium upgraded speakers

HomeLink®



 SEAT SS (L/100km): City 12.2/Hwy 8.5

For full vehicle specifications, visit subaru.ca

Colours

	B9 Tribeca				Forester					Impreza				Legacy					Outback						
	5 Passenger	5 Passenger Limited	5 Passenger Limited with NAV	7 Passenger Limited DVD+NAV	2.5X	2.5X Special Edition	2.5XS	2.5XS Premium	2.5XT	2.5i	2.5i Special Edition	WRX	WRX STI	2.5i	2.5i (Touring Package)	2.5i (Limited Package)	2.5GT	2.5GT spec.B	2.5i	2.5i (Touring Package)	2.5i (Limited Package)	2.5XT	3.0R	3.0R (Premier Package)	
Aspen White	-	-	-	-	GC ₁	-	-	-	-	-	-	-	-	-	-	-	-	-	-	-	-	-	-	-	-
Brilliant Silver Metallic	-	-	-	-	-	-	-	-	-	-	-	-	-	CC	CC	CL	CL	-	CC ₃	CC ₃	CL ₃	CL ₃	CC ₃	TL ₃	-
Champagne Gold Opal	-	-	-	-	-	-	-	GL	BL	-	-	-	-	-	-	-	-	-	TC ₃	TC ₃	TL ₃	CL	TC	TL	
Crystal Grey Metallic	-	-	-	-	GC ₁	GC ₁	GC ₂	GL	BL	GB	GB	GB	BB	-	-	-	-	-	-	-	-	-	-	-	
Diamond Grey Metallic	SC	SL	SL	SL	-	-	-	-	-	-	-	-	-	-	CC	CL	CL	CB	-	-	-	-	-	-	
Evergreen Metallic	-	-	-	-	GC ₁	GC ₁	GC ₂	-	-	-	-	-	-	-	-	-	-	-	-	-	-	-	-	-	
Garnet Red Pearl	-	-	-	-	GC ₁	-	-	GL	BL	GB	-	GB	-	-	-	-	-	-	-	-	-	-	-	-	
Harvest Gold Metallic	SC	DL	DL	DL	-	-	-	-	-	-	-	-	-	-	-	-	-	-	-	-	-	-	-	-	
Newport Blue Pearl	SC	SL	SL	SL	GC ₁	GC ₁	GC ₂	GL	BL	GB	GB	-	-	CC	CC	CL	CL	-	CC ₃	CC ₃	CL ₃	CL ₃	CC ₃	TL ₃	
Obsidian Black Pearl	SC	DL	DL	DL	GC ₁	-	GC ₂	GL	BL	GB	GB	GB	BB	CC	CC	CL	CL	-	-	-	-	CL	CC	TL	
Regal Blue Pearl	-	-	-	-	-	-	-	-	-	-	-	-	-	CC	CC	CL	CL	-	-	-	-	-	-	-	
Satin White Pearl	SC	SL	SL	SL	-	-	-	-	-	GB	-	GB	BB	-	-	-	-	-	-	-	-	-	-	-	
Titanium Silver Metallic	SC	SL	SL	SL	-	-	-	-	-	-	-	-	-	-	-	-	-	-	-	-	-	-	-	-	
Urban Grey Metallic	-	-	-	-	-	-	-	GL	BL	GB	-	GB	BB	-	-	-	-	-	-	-	-	-	-	-	
Willow Green Opal	-	-	-	-	-	-	-	-	-	-	-	-	-	-	-	-	-	-	TC ₄	TC ₄	TL ₄	-	-	-	
World Rally Blue Pearl	-	-	-	-	-	-	-	-	-	-	-	GB	BB	-	-	-	-	-	-	-	-	-	-	-	

BB Black Cloth/Blue Alcantara®

BL Anthracite Black Leather

CB Charcoal Black Leather/Blue Alcantara®

CC Charcoal Black Cloth

CL Charcoal Black Leather

DL Desert Beige Leather

GB Storm Grey/Anthracite Black Cloth

GC Graphite Grey Cloth

GL Graphite Grey Leather

TC Taupe Cloth

TL Taupe Leather

SC Slate Grey Cloth

SL Slate Grey Leather

- Not available

Accessories



Change the way you listen to music or your favourite radio programming.

XM® and SIRIUS® entice Subaru customers by offering subscription based 100% commercial free music plus news, sports, talk and entertainment programming, broadcasted digitally, 24/7. It's like music to your ears.

XM® Satellite Radio

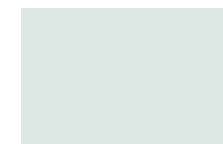
Available on all 2007 B9 Tribeca, Outback and Legacy models.

SIRIUS® Satellite Radio

Available on 2007 Impreza 2.5i Special Edition, WRX, WRX STI, Forester 2.5XS Premium and Forester 2.5XT models.



For a complete listing of available accessories including roof rack systems, cargo area components and protective equipment visit www.subaru.ca or your local Subaru Dealer.



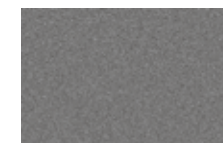
Aspen White



Diamond Grey Metallic



Newport Blue Pearl



Titanium Silver Metallic

Cladding

1 Textured Grey

2 Urban Grey Metallic

3 Granite Grey Opal

4 Moss Green Metallic



Brilliant Silver Metallic



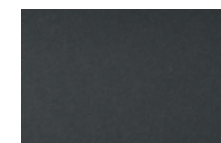
Evergreen Metallic



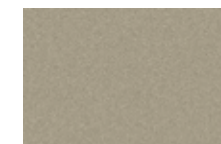
Obsidian Black Pearl



Urban Grey Metallic



Textured Grey



Champagne Gold Opal



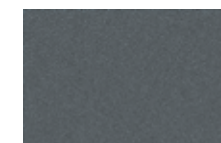
Garnet Red Pearl



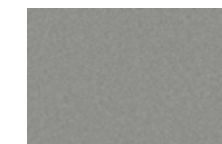
Regal Blue Pearl



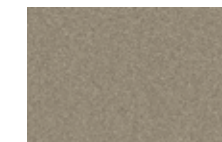
Willow Green Opal



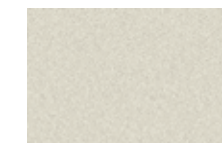
Granite Grey Opal



Crystal Grey Metallic



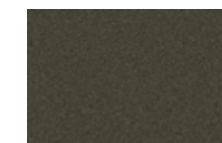
Harvest Gold Metallic



Satin White Pearl



World Rally Blue Pearl



Moss Green Metallic

Subaru Warranty Coverage

Every Subaru vehicle is designed and built to offer our customers the highest possible level of quality and reliability. We are proud of our vehicles and proud to stand behind them with a comprehensive warranty. For 2007 model year vehicles, the warranty on all Subaru vehicles consists of:

New Vehicle Limited Warranty (36 month/60,000 km) - Covers basic and major components for 36 months or 60,000 km.

Major Component Warranty (60 month/100,000 km) - Extends coverage of major components (more than just powertrain) up to 60 months or 100,000 km.

Surface Corrosion Limited Warranty (36 month/60,000 km) - Covers surface corrosion to visible painted body panels for 36 months or 60,000 km.

Anti-Perforation Limited Warranty (60 month/unlimited km) - Covers perforation due to corrosion to body sheet metal panels for 60 months, regardless of kilometres.

Emission Control System Limited Warranty - Covers the majority of emissions components for 36 months or 60,000 km and the major parts of the emission control system for 96 months or 130,000 km.

Parts and Accessories Limited Warranty - Covers Subaru parts and accessories installed by the dealer prior to retail delivery of the vehicle for 36 months or 60,000 km and Subaru parts and accessories installed by the dealer after the retail delivery of the vehicle for 12 months or 20,000 km from the date of the installation.

The above information is an overview of warranty coverage and is not a warranty statement. If you wish to see more details regarding our Subaru warranties please refer to your Subaru warranty booklet, contact your local Dealer or visit our Web site at subaru.ca.

Subaru Protection Plan

As a Subaru owner, you have expectations for a pleasurable, trouble free ownership experience – now and into the future. Once your 36 month/60,000 km New Vehicle Limited Warranty period ends* our Subaru Protection Plan can prolong your hassle free ownership experience with 3 levels of extended service contract coverage tailored to your needs: *Powertrain Protection*; *Major Protection*; or *Complete Protection* (best level of coverage to complement the 60 month/100,000 km Major Component Limited Warranty).

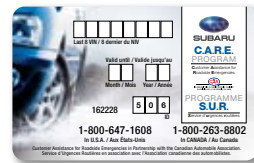
This extended service contract offers comprehensive mechanical and electrical coverage and a number of additional features and benefits. Be sure to ask your Dealer for details or visit subaru.ca.

**If you already own a Subaru vehicle and it is still within the 36 month, 60,000 km New Vehicle Limited Warranty period, you are still eligible.*

Subaru C.A.R.E. (Customer Assistance for Roadside Emergencies)

The SUBARU C.A.R.E. program – which is backed by the Canadian Automobile Association (CAA) – is offered free of charge for the first three years from date of purchase on every new Subaru vehicle or as part of a Subaru Protection Plan. As a SUBARU C.A.R.E. member, you can count on fast, courteous emergency roadside assistance 24 hours a day, 365 days a year. You will receive a membership card and have access to a dedicated toll-free telephone number (in English or French), allowing you to take advantage of over 20,000 roadside assistance contractors and 1,000 CAA and American Automobile Association (AAA) offices throughout Canada and the United States. Ask your Dealer for details or visit subaru.ca.

Subaru Canada, Inc. is proud to be the first vehicle manufacturer to have a direct relationship with CAA, giving our customers the benefit of CAA's unparalleled level of experience and service.



All roads lead to driving pleasure in a Subaru.

subaru.ca



The Supplemental Restraint System (SRS airbags) affords the driver and passenger additional protection in some collisions. This system provides supplemental protection only, and seatbelts must be worn in order to avoid injuries to out-of-position occupants upon airbag deployment. The combination of SRS and seatbelts provides the best protection in a serious accident. All illustrations, specifications, features and photographs contained in this brochure are based on product information available at the time of its printing, and may not be completely accurate following its publication. Colours shown may vary due to reproduction variations in the printing process, and some vehicle parts cannot be shown in certain photographs. Subaru Canada, Inc. reserves the right to discontinue or make changes at any time, without notice or incurring obligations, to colours, materials, equipment, accessories, features, specifications and models, or to change their prices. Some models shown may be from international markets and are not available in Canada, or they may be shown with equipment or accessories which are optional (at extra cost) or only available in certain combinations, or they may be subject to product delays or not be available in Canada. Please visit our Web site for the latest information and specifications. For complete details on product updates, warranties or the Subaru CARE program, please contact your Subaru Dealer. Forester, Legacy, Outback, Impreza, WRX, WRX STI, Subaru, SUBARU BOXER, Subaru CARE and Subaru CARE Customer Assistance for Roadside Emergencies are registered trademarks. Subaru B9 Tribeca is a trademark. Alcantara is a registered trademark of Alcantara S.P.A., and Alcantara is produced by Toray group. "Brebro" is a registered trademark of Freni Brembo S.P.A. HomeLink is a registered trademark of Johnson Controls, Inc. "SIRIUS" and the SIRIUS dog logo are trademarks of SIRIUS Satellite Radio Inc. SPORTSHIFT is a registered trademark of Prodrive Ltd. TORSEN is a registered trademark of JTEKT Corporation. XM is a registered trademark of XM Satellite Radio Inc. Printed in Canada. © 2006 Subaru Canada, Inc. 2007 model year.



Environmental Management System (EMS) ISO 14001:2004 certified by SGS
Brochure is printed on 100% chlorine-free bleached pulp (TCF) and uses vegetable-based inks to be fully recyclable with no harmful residue.

SBA07E