



TUNDRA 07

 **TOYOTA**
make things better



Double Cab Long Bed shown in Silver Sky.

YOU DECIDE.



BUILT TO STAND THE TEST OF TIME.

You want a truck that's on the job, not in the shop. For over seventy years Toyota has been building rugged trucks to conquer the most challenging terrain and harshest working conditions on the planet.

During that time, millions of Toyota trucks have done rough duty around the globe. Now, all that quality, durability and reliability has been built into a full-size truck designed,

engineered and built in North America specifically to meet the exacting standards of North American truck owners – the 2007 Toyota Tundra.

And like all the Toyota trucks that have broken new ground since 1935, Tundra is up to your tough job. Because, like them, Tundra simply never quits.



The **i-FORCE 4.7-Litre V8** is a 271 horsepower workhorse harnessed to a 5-speed Super Electronically Controlled (ECT) automatic transmission. Toyota's exclusive Variable Valve Timing with intelligence (VVT-i) optimizes the engine's volumetric efficiency to pump as much air as possible and extract the maximum power.



Double Cab and CrewMax Tundras are equipped with a **2-PIECE DRIVE SHAFT** that uses steel in the front half and aluminum in the rear to cut unsprung weight and reduce rotational mass for enhanced acceleration. On 4X4 models, the drive shaft uses large-diameter splines that allow the shaft length to adapt to articulation of the suspension and increase the drive shaft's ability to handle high torque loads.

transmission and power steering coolers to reduce heat build-up under heavy loads, and an Automatic Transmission Fluid (ATF) Warmer for outstanding cold start performance. The cast-aluminum block saves weight, and the cylinders are lined with steel sleeves for maximum durability.



The **i-FORCE 5.7-Litre V8** raises the ante to 381 horsepower and 401 lb.ft. of torque, regulated by a heavy-duty 6-speed ECT automatic transmission. Efficiency under all conditions is boosted by Dual VVT-i (independently controlled on the intake and exhaust valves), a low-friction cam assembly,

TRANSMISSION HEATING/COOLING SYSTEM.

Controlling fluid temperatures is crucial to the longevity of any engine and transmission, especially under repeated hard use. To help Tundra's 5.7-Litre powerplant keep its muscular performance, it's equipped with an

Automatic Transmission Fluid (ATF) Warmer for cold-start performance you can bank on. Coolers for the ATF, engine oil and power steering fluid eliminate heat build-up under demanding loads and conditions.



BRAKES ARE BIG VENTILATED DISCS

front and rear (74 square inches of swept area, with 4 pistons in front) to quickly and effectively shed the extreme heat that builds up when hauling or towing the heaviest cargo.

YOU CAN KEEP YOUR HAT ON.

Adjustable headrests mean your hardhat can stay where it belongs – on your head.



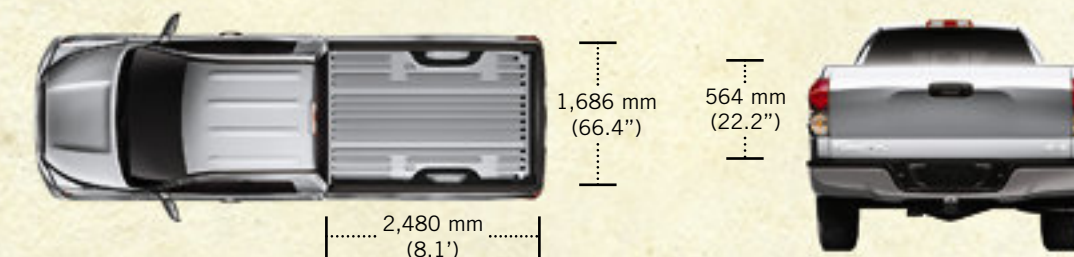
The available centre console storage box is designed to hold hanging file folders and a laptop computer or other work essentials.



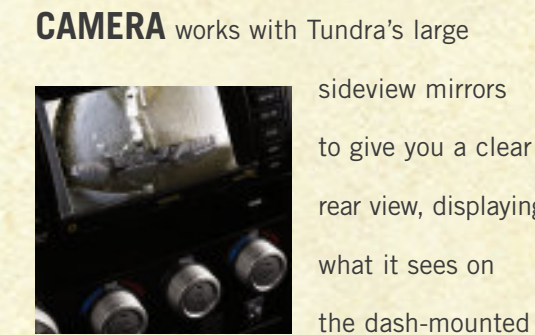
Inside, every Toyota Tundra is **ROOMY, COMFORTABLE AND JOB-READY**, no matter what the job is or where it takes you.

Tundra redefines the concept of 'office' with an outstanding range of convenient standard and optional features that turn it into an office on wheels.

MORE PAYLOAD, MORE PAY. Tundra also pays off when it comes to loading up the bed. The 5.7-Litre 4X4 Tundra Regular cab can handle 830 kg (1,835 lb), and maximum payload for the 4X2 Tundra is 860 kg (1,900 lb).



Sometimes you need eyes in the back of your head, so the available **BACKUP CAMERA** works with Tundra's large



sideview mirrors to give you a clear rear view, displaying what it sees on the dash-mounted navigation screen. In addition to being a great safety feature, it's also extremely useful when hitching up to a trailer.

Massive **TIE RODS** keep the steering rack in secure command of the wheels



on the most rugged Off-Road trails and construction sites, even when fully loaded.

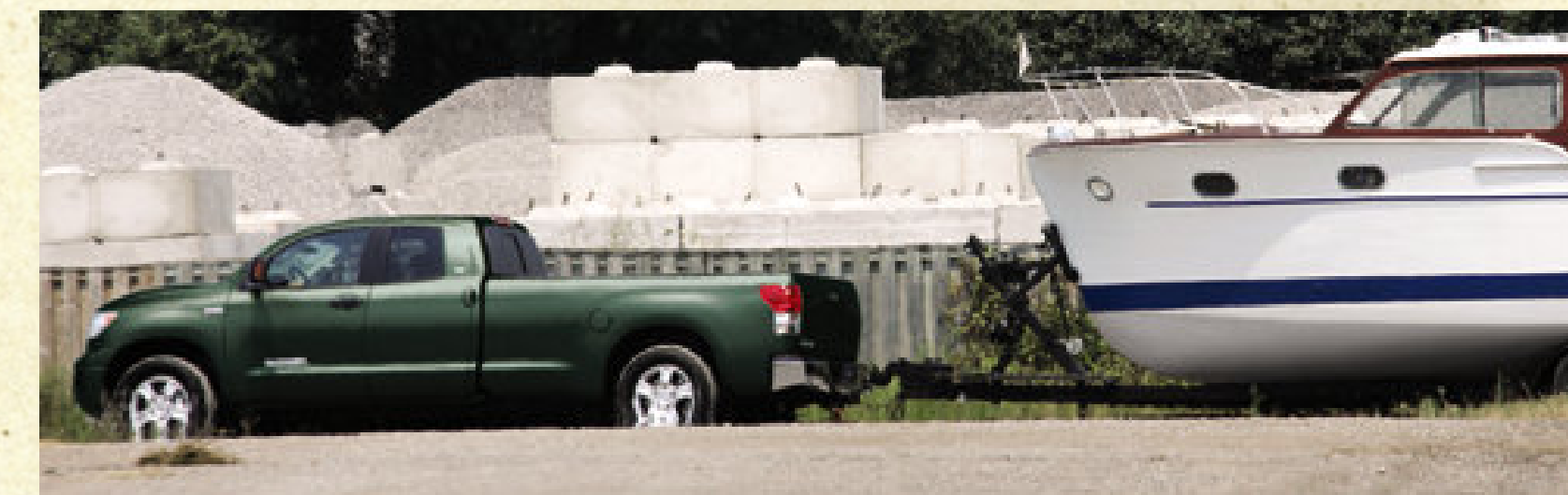
Flexible **BED RAIL SYSTEM** helps manage your cargo. Cleats and Tie-Downs add even more security – cleats are rated at 100 kg (220 lb) per attachment – and you can partition the bed into three separate sections using the handy **2X6 SLOTS**.



RING GEAR. Massive torque loads need a massive ring gear to manage the stress of repeated heavy payloads and towing.



That's why the 5.7-Litre engine is equipped with a 266 mm (10.5") ring gear, and the 4.7-Litre engine is matched to a 241 mm (9.5") ring gear.



Double Cab Long Bed shown in Timberland Mica.

An entirely new frame and suspension starts with a wide track and adds an innovative **FRAME TRAPEZOIDAL SECTION**.



This configuration sets the leaf springs toe-out with the front mounted farther out than the rear to improve lateral stability, especially when cornering under load.

INNOVATIVE FEATURES WORK HARD TO MAKE LIFE EASIER.

Tundra provides a host of thoughtful and extremely practical features that take the edge off a rough day.



You wear work gloves, not opera gloves, so Tundra's oversized door handles and inside control knobs are designed to be easily operated without taking the gloves off. Standard dual-zone climate control rivals luxury automobiles for air flow and quiet operation. The lockable glove box has a compartment designed to store a full-sized thermos.



MAXIMUM TOWING CAPACITY 10,500 LBS

(4,760 kg) for 4X4 models. The sturdiest hauler in the lineup is the 5.7-Litre Tundra 4X2 Regular Cab that can pull a full 10,800 LBS (4,895 kg).



THUMBS UP FOR OUR TWO-FINGER TAILGATE.

Tundra's hydraulic tailgate opens and closes easily with the pressure of just two fingers thanks to the gas-charged damping strut. The lockable tailgate removes easily for maximum convenience in loading heavy cargo.



Double Cab Long Bed shown in Silver Sky.



WHAT'S THE MEASURE OF A REAL TRUCK?

THREE CABS, THREE BEDS, ONE TOUGH TRUCK.

Because one size never fits all, you can combine engine, cab and bed sizes to build the hard-working Tundra that best suits your needs. Every cargo box uses a galvanized zinc coating to reduce corrosion caused by scratches and dings.



CREWMAX SHORT BED

Every CrewMax Tundra is built with a 1,695 mm (5.5') Short Bed to optimize both passenger and cargo capacity.

CrewMax shown in Nautical Blue Metallic.

Available in Spring 2007.

DOUBLE CAB LONG/STANDARD BED

The Double Cab configuration is available with either the 2,480 mm (8.1') Long Box or a 2,000 mm (6.5') Standard Bed.



Double Cab Long Bed shown in Radiant Red.



REGULAR CAB LONG BED

Regular Cab Tundras are equipped with a 2,480 mm (8.1') Long Bed that will carry a 4'x8' sheet of plywood between the wheel wells.

No matter which cab/bed combination is right for you, a Heavy-Duty Tow Package is standard equipment on every 2007 Tundra, and the tow hitch is built right into the frame for extra strength and stability.

Regular Cab shown in Black.

Facing page: Double Cab Long Bed shown in Silver Sky.

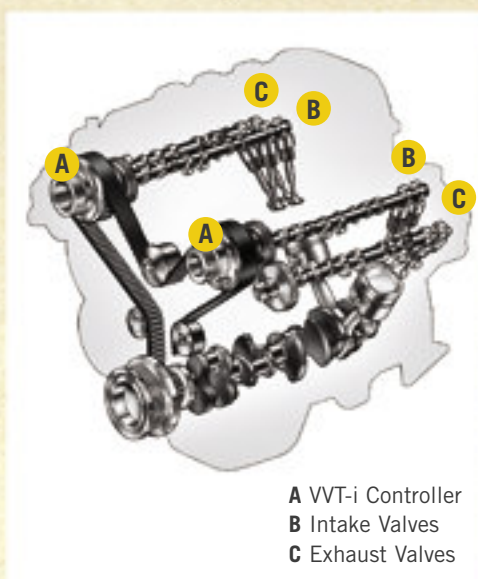


ENGINE + TRANSMISSION + DRIVE SHAFT + FRAME STRENGTH = **10,800-LB.***
 MAXIMUM TOWING CAPACITY

THE POWER AND STRENGTH TO GET THE JOB DONE.

Both Tundra 4X4 and 4X2 can be equipped with the 4.7-Litre V8 or 5.7-Litre V8 engine and power-matched transmission – and all are equipped with a standard **HEAVY-DUTY TOWING PACKAGE**. A Tow-Haul Mode switch on the 5.7-Litre V8 models can be activated to change the transmission shift points, modifying the specific shift logic controls so they favour and hold lower gears when accelerating and decelerating. This improves pulling power, downhill engine braking, cruising comfort, acceleration performance and heat management.

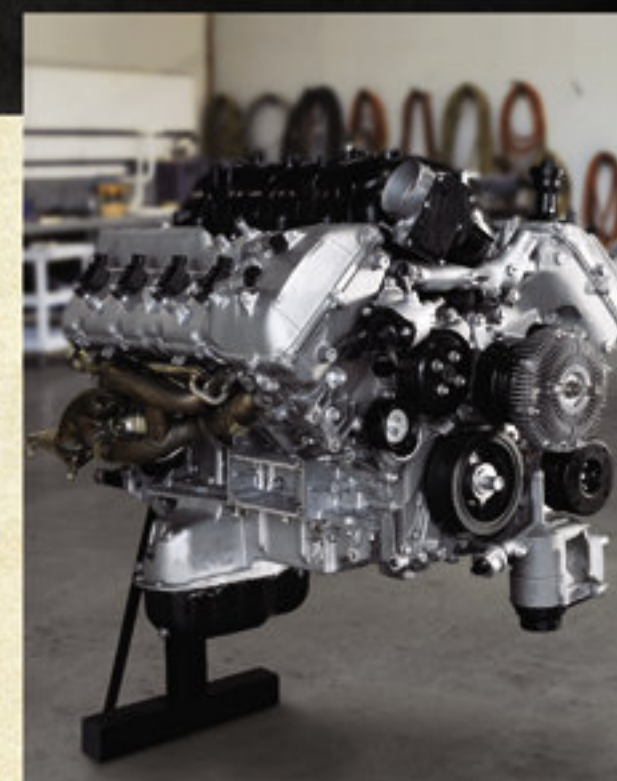
Every 4X4 Tundra features Toyota's advanced One-Touch Sequential Multi-Mode 4WD system for four-wheel drive control with shift-on-the-fly ease.



A VVT-i Controller
 B Intake Valves
 C Exhaust Valves

VARIABLE VALVE TIMING with INTELLIGENCE (VVT-i). Smart technology like VVT-i is one reason for Tundra's broad power band. Built into every Tundra engine, VVT-i controls the engine's volumetric efficiency to extract the maximum power from every intake and exhaust stroke. On the 5.7-Litre i-FORCE V8, dual independent VVT-i actually adjusts the timing for the intake and exhaust valves independently. The result is that more than 90% of the engine's peak torque of 401 lb.ft. is on tap between 2,400 and 5,500 rpm.

The 5.7-Litre V8 also features a pair of stainless steel 4 into 2 into 1 **TUBULAR HEADERS**. This design helps the exhaust flow more freely, reducing back pressure and enhancing mid-range torque.



New 5.7 L i-FORCE V8.

Every Tundra is built for the long haul, because robust durability is engineered into every component.

Our **TRIPLETECH™ FRAME** creates an optimal combination of strength, reliability and durability.

The frame is **FULLY BOXED** up front in the engine bay where weight-supporting strength is essential.

A **REINFORCED C-CHANNEL** of heavy-gauge steel under the cab means superior ride quality and crash worthiness.

To maximize payload without sacrificing durability, we put an **OPEN C-CHANNEL** under the bed.

REINFORCED LEAF SPRING ATTACHMENTS are extra durable to endure the strongest punishment. The vertical stroke of the high-strength steel front double A-arms with coil-over-spring/shock units and the heavy-duty rear multi-leaf springs has been optimized to handle Tundra's maximum payload capacity.

*4,895 kg (5.7-Litre Tundra 4x2 Regular Cab).



4x4 CrewMax Cab shown in Pyrite.

INTERIORS BUILT FOR THE WAY YOU WORK.

Tundra is available in three cab sizes – Regular Cab, Double Cab or CrewMax – each with a unique combination of features for the job you do. But no matter which cab you choose, you'll get plenty of flexible storage (like map pockets, water-bottle storage on the doors and lots of big cupholders) generous convenience features (including oversized controls that can be operated while wearing work gloves) and a spacious interior that you and everyone in your crew will appreciate.



Tundra's available DVD-based Navigation System puts big, legible maps on a 178 mm (7") LCD screen located in the centre of the dash. Bluetooth Wireless capability lets you stay in touch with hands-free cellular phone when you're on the road.



Tundra's innovative console storage box is the efficient way to keep your office on wheels organized. It features room for hanging files, a laptop computer, and three big cupholders.

CREWMAX

The CrewMax Cab is your travelling field office, as rugged and flexible as it is roomy and comfortable. CrewMax LTD can be used as a conference room on wheels, thanks to heated front captain's chairs, a centre console box, a 100-mm sliding centre armrest, and power-adjustable driver and front passenger seats. The driver's seat adapts to fit you, thanks to 10 power adjustments including lower thigh support that extends the seat by 2 inches.

Available in Spring 2007.

The 60/40 split folding rear seat features outstanding legroom 1,130 mm (44.5"), reclines a full 41 degrees and slides 254 mm (10"), so passengers can stretch out. The centre armrest folds down to reveal dual cupholders, and the rear seatbacks incorporate 4 tie-down hooks to secure cargo. For on-site meetings, the rear seat folds flat to create an expansive work surface.



Right: CrewMax Limited interior shown in Graphite with available DVD navigation system.





Double Cab interior shown in Graphite.



Regular Cab interior shown in Graphite.

DOUBLE CAB

Tundra Double Cab is big where it counts, especially in the rear seat where your crew can sit and stretch out in comfort. For even more flexibility and ease of use, the rear doors in our Double Cab are forward hinged with a full 80-degree door opening for easy loading of people and cargo.

Console Storage Box, the 40/20/40 split front bench seat has a fold-down which will accommodate a variety of items.



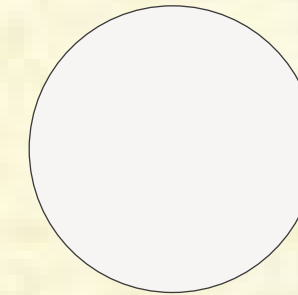
REGULAR CAB

Inside Tundra's Regular Cab, your need for size, space and storage is accommodated. Every Tundra is equipped with a generously-sized double-compartment glove box, including an upper compartment that's big enough to hold a standard-size Thermos™ bottle. Behind the 3-passenger front seat there's a large flat storage tray big enough to hold toolboxes, even a small generator and the available fold flat front passenger seat can double as a desk.

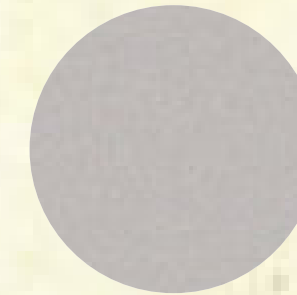




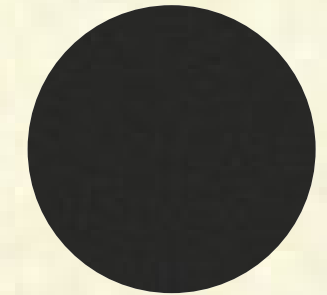
2007 TUNDRA COLOURS:



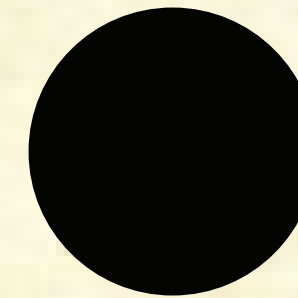
040 Alpine White^{1,4,5}



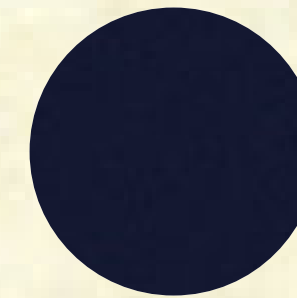
1D6 Silver Sky^{1,2,5}



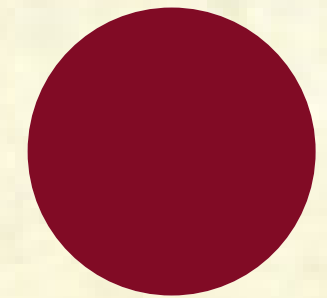
1F9 Slate Metallic^{1,2,5}



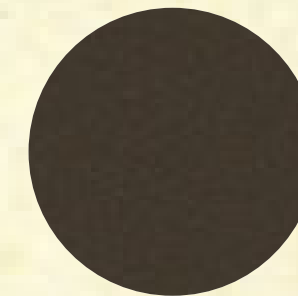
202 Black^{1,2,5,6}



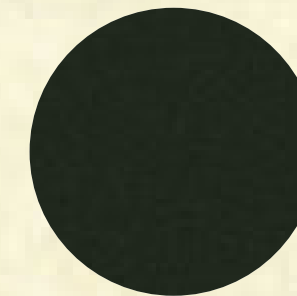
8S6 Nautical Blue Metallic^{1,5}



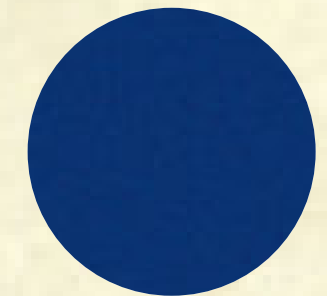
3L5 Radiant Red²



4T3 Pyrite^{2,4,5}



6T8 Timberland Mica^{3,4}



8T7 Blue Streak Metallic¹

¹ Graphite Fabric.

² Black Fabric.

³ Sand Beige Fabric.

⁴ Sand Beige Leather Trim (Limited models only).

⁵ Graphite Leather Trim (Limited models only).

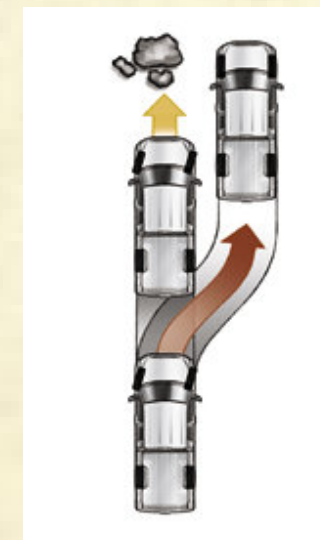
⁶ Red Rock Leather Trim (Limited models only).

Please see your Toyota Dealer for details.

SAFETY IS ALWAYS STANDARD.

Because on-the-job safety is as important to us as it is to you, every Tundra protects you and your passengers with standard occupant safety features that includes dual-stage driver and front passenger airbags, front seat-mounted side airbags, and front and rear roll-sensing curtain shield airbags. The vehicle

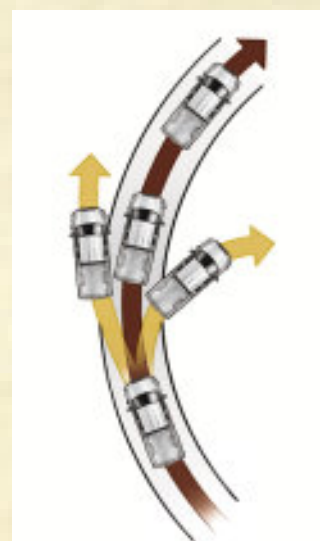
is built to protect, as well, with a reinforced cab and an extruded front bumper that transfers front-impact forces through the frame-rails and away from the people inside.



TAUT HANDLING, CONTROLLED STOPS.

Every 2007 Toyota Tundra is designed to respond immediately to driver input to help keep you on top of every situation under all driving conditions.

Vehicle Stability Control (VSC) identifies loss of traction and acts automatically to maintain directional stability. The system monitors your steering angle and compares it to the direction the truck is actually travelling. When loss of traction is detected, VSC activates to help maintain maximum grip.



Traction Control (TRAC, A-TRAC) helps keep you in control on wet, icy, loose or uneven surfaces by applying individual wheel braking as needed and reducing engine output.

Electronic Brake-force Distribution (EBD) responds to driving conditions by optimizing the amount of brake-force applied to each wheel for maximum control and secure stopping power.

4-Wheel Antilock Braking System (ABS) helps maintain steering control by avoiding skids during urgent braking.

Brake Assist (BA) boosts brake pressure during emergency stops to take full advantage of the benefits of ABS.

NEW VEHICLE WARRANTY SUMMARY

No Deductibles – No Transfer Fees

Comprehensive Coverage - 3 years or 60,000 km

This warranty includes 24 hour Roadside Assistance and other benefits, as well as coverage of repairs on any part of the vehicle that is defective in material or workmanship under normal use and maintenance. Different warranties apply to original tires.

Powertrain Components - 5 years or 100,000 km

This warranty covers repairs to powertrain components that are defective in material or workmanship under normal use and maintenance.

Major Emission Control Components - 8 years or 130,000 km

This warranty covers repairs to specified major emission components that are defective in material or workmanship under normal use and maintenance.

Corrosion Perforation - 5 years unlimited distance

Any sheet metal found, under normal use, to have developed a perforation from corrosion due to defects in material or workmanship.

VEHICLE COVERAGE

ECP™ With Extra Care Protection you receive inflation protected coverage from mechanical failures, road emergencies, and much more. It's the most affordable way to guarantee your peace of mind. Consult your Toyota Dealer for details.

TOYOTA EXPERIENCE
The part you can't replace

Toyota Dealers are dedicated to making the experience of owning a Toyota both satisfying and rewarding. Our highly skilled, Toyota-trained technicians are here to make sure you enjoy many years of trouble-free driving. "That new Toyota feeling - we help you keep it."

TOYOTA FINANCIAL SERVICES If you're looking at leasing or financing, we're here to help. We provide competitive interest rates, flexible terms, and an easy online pre-approval process. The toughest decision should be choosing which Toyota you want. Visit us at www.toyotafinancialservices.ca.

Toyota Canada and its Dealers are proud sponsors of Canadian Special Olympics.



DRESS IT UP. DRIVE IT OUT.

In addition to several option packages, Toyota offers a range of individual accessories that can be individually selected to customize your Tundra.

To see what any 2007 Toyota Tundra will look like – and cost – in any available configuration and fitted with any option package or accessory, please visit your local Dealer or toyota.ca and click on the Accessory Configurator.



Enhance the look and functionality of your new Tundra by choosing from the following list of accessories:

- All-Season Mats – Tray Type
- Auto Dimming Mirror w/HomeLink®
- Bed Rail w/Cleats
- Block Heater
- Cargo Net
- Carpet Floor Mats
- Dash Accent Kit
- DVD System
- Emergency Kit
- First Aid Kit
- Hard Tonneau Cover
- Licence Plate Cover
- Moulded Floor Mats
- Owner Manual Wallet
- Park Pilot
- Performance Exhaust
- Security System/GBS
- Side Step Bars
- Side Window Visors
- Soft Tonneau Cover
- Wheel Lock (Spare Tire)
- Wheel Locks

Tundra all dressed up with 20" Alloy Wheels, Hood Deflector, Side Window Visors, Tool Box and Running Boards.



Hood Deflector



Remote Engine Starter



Tie-Down Cleats



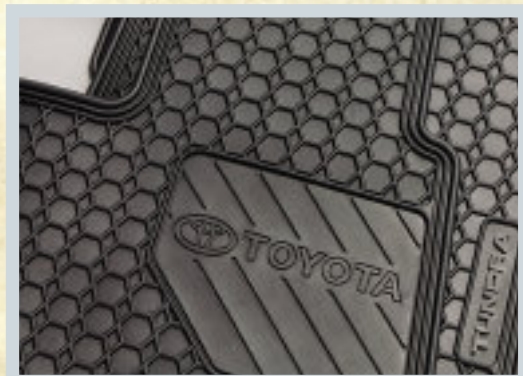
iPOD™ Adapter/Interface



Running Boards



Tool Box



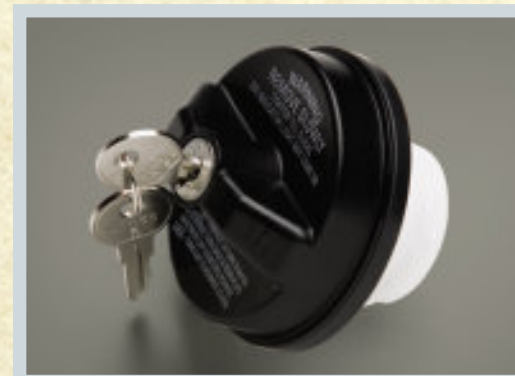
All-Season Mats



Bed Extender



Cargo Divider



Locking Fuel Cap



Skid Plate



Towing Accessories



Backup Camera



Bed Liner



Door Sill Protectors



Navigation System



Swing Away Bike Rack



Truck Tent & Mattress



Bed Bike Rack



Bed Mats



Exhaust Tip



Rear Window Deflector

Tundra all dressed up with 20" Alloy Wheels, Side Window Visors, Running Boards, Rear Window Deflector, Tool Box, Cargo Divider, Tie-Down Cleats, Bed Extender and Towing Accessories.



2007 Tundra 4x4 Features

	REGULAR CAB			DOUBLE CAB			CREWMAX		
	DLX LONG	SRS LONG	SRS STD	SRS LONG	SRS LONG	LTD STD	SRS SHORT	LTD SHORT	
INTERIOR	47 L	57 L	47 L	57 L	47 L	57 L	47 L	57 L	57 L
AM/FM CD/MP3/WMA Player, Audio Auxiliary Input Jack, 4-Speakers	●	●	--	--	--	--	--	--	--
AM/FM CD/MP3/WMA Player, Audio Auxiliary Input Jack, 6-Speakers	--	--	●	●	●	●	--	--	--
JBL, AM/FM MP3/WMA/CD 6-Disc Changer, Audio Auxiliary Input Jack, Bluetooth Capability, Steering Wheel Audio Controls	--	--	--	--	●	●	●	●	●
10-Speakers	--	--	--	--	●	●	--	--	--
12-Speakers	--	--	--	--	●	●	--	--	●
Air Conditioning w/Dual Zone Control, Cabin Air Filter	●	●	●	●	--	--	--	--	--
Automatic Air Conditioning w/Dual Zone Control, Cabin Air Filter	--	--	--	--	●	●	●	●	●
Rear Seat Heat Ducts	--	●	●	●	●	●	●	●	●
Full Fabric Seat Material	●	●	●	●	--	--	--	--	--
Premium Cloth Seat Material	--	●	●	●	●	●	--	--	--
Leather Seat Surfaces	--	--	--	--	●	●	●	●	●
40/20/40 Split Front Bench Seat	●	●	●	●	--	--	--	--	--
Driver & Front Passenger Seats Recline, Headrest-Vertical Adjustment	●	●	●	●	--	--	--	--	--
Driver Seat Cushion-Height & Angle Adjustment	--	●	●	●	--	--	--	--	--
Driver Seat Foldable Armrest	●	●	●	●	●	●	--	--	--
Driver & Front Passenger Bucket Seats	--	--	--	--	●	●	●	●	●
Power 8-Way Driver Seat, Power Lumbar Support	--	--	--	●	--	--	--	--	--
Power 10-Way Heated Driver Seat & Power 4-Way Heated Front Passenger Seat, Power Lumbar Support	--	--	--	--	●	●	●	●	●
Driver Seat Memory System w/Linked Mirrors	--	--	--	--	●	●	--	--	●
60/40 Split Rear Bench Seat w/Fold-Up Seat Cushions	--	●	●	●	●	●	--	--	--
60/40 Split Rear Bench Seat w/Slide, Recline, Fold-Down Centre Armrest, Fold-Down Seat Back	--	--	--	--	--	--	●	●	●
Voltmeter, Water Temperature Gauge, Automatic Transmission Oil Temperature Gauge, Dual Trip Odometer	●	●	●	●	●	●	●	●	●
Tachometer	●	●	●	●	●	●	●	●	●
Outside Temperature Gauge	--	●	●	●	●	●	●	●	●
Accessory Meter	--	--	--	●	--	--	--	--	--
Optitron Gauges, Multi-Information Display	--	--	--	--	●	●	●	●	●
Power Door Locks	--	●	●	●	●	●	●	●	●
Front Power Windows w/Driver Side Auto Down	--	●	●	●	●	●	●	●	●
Power Windows w/Driver Side Auto Down	--	●	●	●	●	●	●	●	●
Fixed Rear Window	●	●	●	●	--	--	--	--	--
Sliding Rear Window	--	●	●	●	●	●	--	--	--
Power Vertical Sliding Rear Window	--	--	--	--	●	●	--	--	●
Dual Vanity Mirrors	--	--	●	●	●	●	--	--	--
Dual Illuminated Vanity Mirrors, Electrochromic Rear View Mirror w/Digital Compass	--	--	--	--	●	●	●	●	●
Fabric Door Trim	--	●	●	●	●	●	--	--	--
Simulated Leather Door Trim	--	--	--	--	●	●	●	●	●
Leather-Wrapped Steering Wheel & Shift Knob	--	--	--	--	●	●	●	●	●
Fabric Headliner	●	●	●	●	●	●	●	●	●
4-Spoke Tilt Steering Wheel	●	●	●	●	--	--	--	--	--
4-Spoke Tilt, Telescopic Steering Wheel	--	--	--	●	●	●	--	--	--
Power Tilt & Telescopic Steering Wheel	--	--	--	--	●	●	●	●	●
Vinyl Floor, All-Season Floor Mats	●	●	●	●	--	--	--	--	--
Carpeting, Carpet Floor Mats	--	●	●	●	●	●	●	●	●

● = Standard ○ = Optional -- = Not Available

	REGULAR CAB			DOUBLE CAB			CREWMAX		
	DLX LONG	SRS LONG	SRS STD	SRS LONG	SRS LONG	LTD STD	SRS SHORT	LTD SHORT	
CONVENIENCE	47 L	57 L	47 L	57 L	47 L	57 L	47 L	57 L	57 L
Cruise Control	--	●	●	●	●	●	●	●	●
Digital Clock	--	●	●	●	●	●	●	●	●
Lighting Package	--	●	●	●	●	●	●	●	●
Door Courtesy Lamps, Glove Box Lamp	--	●	●	●	●	●	●	●	●
Map Lamps	--	--	--	--	●	●	--	--	●
Under Rear Seat Storage Trays	--	--	--	●	--	--	--	--	--
Front Console Storage Box w/Lid, Overhead Console Box, Driver & Front Passenger Seat Back Pockets	--	--	--	●	●	●	●	●	●
Retained Accessory Power	--	●	●	●	●	●	●	●	●
Accessory Power Outlets	●	●	●	●	●	●	●	●	●
Integrated Garage Door Opener	--	--	--	--	●	●	--	--	●
Overhead Sunglass Storage	●	●	●	●	●	●	●	●	●
Illuminated Entry	--	●	●	●	●	●	●	●	●
Front Cupholders	●	●	●	●	●	●	●	●	●
Front & Rear Cupholders	--	●	●	●	●	●	●	●	●
Keyless Entry	--	●	●	●	●	●	●	●	●
Glove Box Lock	●	●	●	●	●	●	●	●	●

EXTERIOR									
18" Styled Steel Wheels	●	●	●	●	--	--	--	--	--
18" Aluminum Alloy Wheels, Wheel Locks	--	●	--	--	--	--	●	--	--
20" Aluminum Alloy Wheels, Wheel Locks	--	--	--	--	--	--	●	--	●
Long Bed (8.1 feet)	●	●	●	●	--	--	--	--	--
Standard Bed (6.5 feet)	--	●	●	●	--	--	--	--	--
Short Bed (5.5 feet)	--	--	--	--	--	--	●	--	●
High Solar Energy Absorbing Window Glass	●	●	●	●	●	●	●	●	●
Privacy Glass	--	--	--	--	●	●	●	●	●
Rear Window Privacy Glass	--	--	--	--	●	●	●	●	●
Foldable Mirrors	●	●	●	●	●	●	●	●	●
Dual-Heated Power Remote-Control Mirrors	--	●	●	●	●	●	●	●	●
Power Folding Mirrors	--	--	--	--	●	●	--	--	●
Electrochromic Side View Mirrors w/Integrated Signal Lamps	--	--	--	--	●	●	●	●	●
Front & Rear Splash Guards	●	●	●	●	●	●	●	●	●
4 Pin/7 Pin Trailer Wire Harness, Electronic Trailer Brake Control Connector, Class IV Weight Distribution Trailer Hitch	●	●	●	●	●	●	●	●	●
Black Door & Tailgate Handles	●	●	●	●	●	●	--	--	--
Black Resin Front Bumper, Black Steel Rear Bumper, Black Grille	●	--	--	--	--	--	--	--	--
Chrome Grille	--	●	●	●	●	●	●	●	●
Chrome Rear Bumper	--	●	●	●	●	●	●	●	●
Coloured Front Bumper	--	●	●	●	●	●	●	●	●
Coloured Resin & Chrome Front Bumper	--	●	●	●	●	●	--	--	--
Chrome Mirrors & Chrome Finished Door Handles	●	●	●	●	●	●	●	●	●
Power Tilt/Slide Moonroof w/Sunshade	--	--	--	--	--	--	--	--	--
2-Speed Wipers	●	--	--	--	--	--	--	--	--
Variable Intermittent Wipers	--	●	●	●	●	●	●	●	●
Windshield Wiper De-Icer	--	●	●	●	●	●	●	●	●
Light Control System	--	--	--	--	●	●	●	●	●
Automatic Headlamp Cancel System	●	●	●	●	●	●	●	●	●
Fog Lamps	--	--	--	--	●	●	●	●	●
Stake Pockets	●	●	●	●	●	●	●	●	●
Bed Rail Caps	●	●	●	●	●	●	●	●	●
Easy Lift Tailgate, Removable Locking Tailgate	●	●	●	●	●	●	●	●	●
Bed Rail System	--	●	●	●	●	●	●	●	●
Cargo Bed Tie-Downs	●	●	●	●	●	●	●	●	●
Tie-Down Cleats (set of 4)	--	●	●	●	●	●	●	●	●
SRS Badges	--	●	●	●	●	●	--	--	--
LTD Badges	--	--	--	--	●	●	●	●	●

	REGULAR CAB			DOUBLE CAB			CREWMAX		
	DLX LONG	SRS LONG	SRS STD	SRS LONG	SRS LONG	LTD STD	SRS SHORT	LTD SHORT	
SAFETY	47 L	57 L	47 L	57 L	47 L	57 L	47 L	57 L	57 L
Dual-Stage Driver & Passenger Airbag Supplemental Restraint System (SRS)*	●	●	●	●	●	●	●	●	●
Front Passenger Airbag Off Switch	●	●	--	--	--	--	--	--	--
Front Passenger Airbag Occupancy Classification Indicator	●	●	●	●	●	●	●	●	●
Front Seat-Mounted Side Airbags (SRS)*	●	●	●	●	●	●	●	●	●
Roll-Sensing Front Head/Side Curtain Airbags (SRS)*	●	●	--	--	--	--	--	--	--
Roll-Sensing Front & Rear Head/Side Curtain Airbags (SRS)*	--	●	●	●	●	●	●	●	●
Head/Side Curtain Airbags Off Switch	●	●	●	●	●	●	●	●	●
All-Position 3-Point Lap & Shoulder Belts	●	●	●	●	●	●	●	●	●
Adjustable "B" Pillar Shoulder Belt Anchors	●	●	●	●	●	●	●	●	●
Front Tow Hook	●	●	●	●	●	●	●	●	●
Vehicle Anti-Theft System	--	--	--	--	●	●	●	●	●
Engine Immobilizer	●	●	●	●	●	●	●	●	●
Clearance & Backup Sensor	--	--	--	--	●	●	●	●	●
Automatic Transmission Oil Temperature, Low Fuel, Low Washer Fluid, Door Ajar Warning Indicators	●	●	●	●	●	●	●	●	●
Tire Pressure Monitoring System	●	●	●	●	●	●	●	●	●

PACKAGES									
Regular Cab B Package:									
Bed Rail System, Tie-Down Cleats (set of 4), Power Remote-Control Heated Mirrors, Power Door Locks, Power Windows w/Driver Side Auto Down, Keyless Entry, Sliding Rear Window, Privacy Glass, Cruise Control, Premium Cloth Seats, Coloured Resin & Chrome Front Bumper, Chrome Grille, Chrome Rear Bumper, Variable Intermittent Wipers, Carpeting, 18" Aluminum Alloy Wheels w/Wheel Locks, P275/65R18 Tires, Digital Clock, Automatic Transmission Oil Temperature Gauge	○	--	--	--	--	--	--	--	--

Double Cab B Package:									
Front Bucket Seats, Power 8-Way Adjustable Driver Seat, Console Mounted Shift Lever, Telescopic Steering Wheel, Privacy Glass, Rear Window Privacy Glass, Sequential Multi-Mode Gate-Type Shifter, Overhead Console Box, Front Seat Back Pockets, Sliding Rear Window, Front Console Box w/Lid, 18" Aluminum Alloy Wheels w/Wheel Locks, P275/65R18 Tires, Accessory Meter, Under Rear Seat Storage Trays	--	--	○	○	--	--	--	--	--

Double Cab TRD Off-Road Package:									
B Package above, plus Front & Rear Bilstein Shock Absorbers, Bed Rail System, Tie-Down Cleats (set of 4), Clearance & Backup Sensor, In-Dash 6-Disc CD Changer, Integrated Garage Door Opener, Electrochromic Rear View Mirror w/Digital Compass, Fog Lamps, Map Lamps, Raised White Letter Tires, Unique Alloy Wheels, TRD Decals	--	--	○	○	--	--	--	--	--

Double Cab C Package:									
Bed Rail System, Tie-Down Cleats (set of 4), In-Dash 6-Disc CD Changer, Integrated Garage Door Opener, Clearance & Backup Sensor, Electrochromic Rear View Mirror w/Digital Compass, Vehicle Anti-Theft System, Fog Lamps, Map Lamps	--	--	--	--	○	--	--	--	--

CREWMAX TRD Off-Road Package:									
Front & Rear Bilstein Shock Absorbers, P275/65R18 White Raised Letter Tires, Unique Alloy Wheels, In-Dash 6-Disc CD Changer, Integrated Garage Door Opener, Clearance & Backup Sensor, Power Tilt/Slide Moonroof w/Sunshade, Electrochromic Rear View Mirror w/Digital Compass, Vehicle Anti-Theft System, Fog Lamps, Map Lamps, TRD Decals	--	--	--	--	--	--	--	○	--

C Package:									
DVD-Based Navigation System w/Backup Camera, 7.0" LCD Display	--	--	--	--	--	--	○	○	--

● = Standard ○ = Optional -- = Not Available

* Airbag Notice: The 2007 Tundra features a driver & front passenger airbag Supplemental Restraint System (SRS) which activates only in a full frontal collision of sufficient magnitude to inflate the bags. In moderate frontal collisions, the airbags may not inflate, in a rear or side collision the airbags are designed not to inflate, so the primary protection is provided by the lap and shoulder belt system. The 2007 Tundra features a front seat-mounted side airbag Supplemental Restraint System (SRS) and a roll-sensing front & rear head/side curtain airbag Supplemental Restraint System (SRS) which activate only in side-impact collision of sufficient magnitude to inflate the bags. Roll-sensing airbags are designed to deploy at severe tilt degree roll or lateral G-force. *Seatbelts must be worn at all times by all occupants.*

2007 Tundra 4x4 Specifications

	REGULAR CAB			DOUBLE CAB			CREWMAX		
	DLX LONG	SRS LONG	SRS STD	SRS LONG	SRS LONG	LTD STD	SRS SHORT	LTD SHORT	
MECHANICAL	47 L	57 L	47 L	57 L	47 L	57 L	47 L	57 L	57 L
Engine									
4.7 Litre, V8, DOHC, 32-Valve, Variable Valve Timing w/Intelligence (VVT-i), Sequential Multiport Electronic Fuel Injection, Engine Oil Cooler	●	--	●	--	●	--	--	--	--
5.7 Litre, V8, DOHC, 32-Valve, Dual Variable Valve Timing w/Intelligence (VVT-i), Sequential Multiport Electronic Fuel Injection, Engine Oil Cooler	--	●	●	●	●	●	●	●	●
Compression Ratio									
10.0:1	●	--	--	--					

2007 Tundra 4x2 Features

	REGULAR CAB		DOUBLE CAB		CREWMAX	
	DLX LONG	SRS LONG	SRS STD	SRS LONG	SRS LTD SHORT	SRS LTD SHORT
INTERIOR	47 L	57 L	47 L	57 L	57 L	57 L
AM/FM CD/MP3/WMA Player, 4-Speakers, Audio Auxiliary Input Jack	●	●	--	--	--	--
AM/FM CD/MP3/WMA Player, 6-Speakers, Audio Auxiliary Input Jack	--	--	●	●	--	--
JBL, AM/FM MP3/WMA/CD Changer, 12-Speakers, Audio Auxiliary Input Jack, Bluetooth Capability, Steering Wheel Audio Controls, Antenna Pole	--	--	--	--	●	●
Air Conditioning w/Dual Zone Control, Cabin Air Filter	●	●	●	●	●	--
Automatic Air Conditioning w/Dual Zone Control, Cabin Air Filter	--	--	--	--	●	●
Rear Seat Heater Ducts	--	--	●	●	●	●
Driver & Front Passenger Bucket Seats	--	--	●	●	●	●
40/20/40 Split Front Bench Seat	●	●	--	--	--	--
Power 8-Way Driver Seat	--	--	●	●	--	--
Power Heated 10-Way Driver Seat & Power Heated 4-Way Front Passenger Seat, Power Lumbar Support	--	--	--	--	●	●
Driver Seat Memory System w/Linked Mirrors	--	--	--	--	--	●
Full Fabric Seat Material	●	--	--	--	--	--
Premium Cloth Seat Material	--	●	●	●	●	--
Leather Seat Surfaces	--	--	--	--	--	●
Driver & Front Passenger Seats Recline, Headrest-Vertical Adjustment	●	●	●	●	●	--
Driver Seat Cushion-Height & Angle Adjustment	--	--	●	●	--	--
Driver Seat Foldable Armrest	●	●	●	--	--	--
60/40 Split Rear Bench Seat w/Fold-Up Rear Seat Cushions	--	--	●	●	--	--
60/40 Split Rear Bench Seat w/Slide, Recline, Fold-Down Seat Back & Centre Armrest	--	--	--	--	●	●
Power Door Locks	--	●	●	●	●	●
Front Power Windows w/Driver Side Auto Down	--	●	--	--	--	--
Power Windows w/Driver Side Auto Down	--	--	●	●	●	●
Accessory Meter	--	--	●	●	--	--
Outside Temperature Gauge	--	●	●	●	●	●
Fixed Rear Window	●	--	●	--	--	--
Sliding Rear Window	--	●	--	--	--	--
Power Vertical Sliding Rear Window	--	--	--	●	●	●
Voltmeter, Water Temperature Gauge, Automatic Transmission Oil Temperature Gauge, Dual Trip Odometer	●	●	●	●	●	--
Tachometer	●	●	●	●	●	●
Optitron Gauges, Multi-Information Display, Tachometer, Voltmeter, Water Temperature Gauge, Automatic Transmission Oil Temperature Gauge, Outside Temperature Gauge, Dual Trip Odometer	--	--	--	--	--	●
Dual Vanity Mirrors	--	--	●	●	●	--
Dual Illuminated Vanity Mirrors, Electrochromic Rear View Mirror w/Digital Compass	--	--	--	--	--	●
4-Spoke Tilt Steering Wheel	●	●	●	--	--	--
4-Spoke Tilt, Telescopic Steering Wheel	--	--	●	●	--	--
Power Tilt, Telescopic Steering Wheel	--	--	--	--	--	●
Leather-Wrapped Steering Wheel & Shift Knob	--	--	--	--	--	●
Simulated Leather Door Trim	--	--	--	--	--	●
Vinyl Floor, All-Season Floor Mats	●	--	--	--	--	--
Carpeting, Carpet Floor Mats	--	●	●	●	●	●

● = Standard ○ = Optional -- = Not Available

	REGULAR CAB		DOUBLE CAB		CREWMAX	
	DLX LONG	SRS LONG	SRS STD	SRS LONG	SRS LTD SHORT	SRS LTD SHORT
CONVENIENCE	47 L	57 L	47 L	57 L	57 L	57 L
Cruise Control	--	●	●	●	●	●
Digital Clock	--	●	●	●	●	●
Lighting Package	--	--	●	●	●	●
Door Courtesy Lamps, Map Lamps, Glove Box Lamp	--	--	--	●	●	●
Front Console Storage Box w/Lid, Overhead Console Box, Driver & Front Passenger Seat Back Pockets	--	--	--	●	●	●
Under Rear Seat Storage Trays	--	--	--	●	--	--
Overhead Sunglass Storage	●	●	●	●	●	●
Integrated Garage Door Opener	--	--	--	--	--	●
Front Cupholders	●	●	--	--	--	--
Front & Rear Cupholders	--	--	●	●	●	●
Retained Accessory Power	--	--	●	●	●	●
Accessory Power Outlets	●	●	●	●	●	●
Illuminated Entry	--	--	●	●	●	●
Keyless Entry	--	●	●	●	●	●
Glove Box Lock	●	●	●	●	●	●

EXTERIOR						
18" Styled Steel Wheels	●	--	●	--	--	--
18" Aluminum Alloy Wheels, Wheel Locks	--	●	--	●	●	--
20" Aluminum Alloy Wheels, Wheel Locks	--	--	--	--	--	●
Long Bed (8.1 feet)	●	●	●	--	--	--
Standard Bed (6.5 feet)	--	--	●	--	--	--
Short Bed (5.5 feet)	--	--	--	●	●	●
High Solar Energy Absorbing Window Glass	●	●	●	●	●	●
Privacy Glass	--	●	●	●	●	●
Rear Window Privacy Glass	--	--	●	●	●	●
Front & Rear Splash Guards	●	●	●	●	●	●
Power Tilt/Slide Moonroof w/Sunshade	--	--	--	--	●	●
Black Door & Tailgate Handles	●	●	●	●	●	--
Black Resin Front Bumper, Black Steel Rear Bumper, Black Grille	●	--	--	--	--	--
Chrome Grille	--	●	●	●	●	●
Chrome Rear Bumper	--	●	●	●	●	●
Coloured Front Bumper	--	--	●	●	●	●
Coloured Resin & Chrome Front Bumper	--	●	--	--	--	--
Chrome Mirrors & Chrome Finished Door Handles	--	--	--	--	--	●
4 Pin/7 Pin Trailer Wire Harness, Electronic Trailer Brake Control Connector, Class IV Weight Distribution Trailer Hitch	●	●	●	●	●	●
Folding Mirrors	●	--	--	--	--	--
Dual Heated Power Remote Folding Mirrors	--	●	●	●	●	--
Power Folding Heated Electrochromic Side View Mirrors w/Integrated Signal Lamps & Memory System	--	--	--	--	--	●
2-Speed Wipers	●	--	--	--	--	--
Variable Intermittent Wipers	--	●	●	●	●	●
Windshield Wiper De-Icer	--	--	●	●	●	●
Light Control System	--	--	--	--	--	●
Auto Headlamp Cancel System	●	●	●	●	●	--
Fog Lamps	--	--	--	--	--	●
Stake Pockets	●	●	●	●	●	●
Bed Rail Caps	●	●	●	●	●	●
Easy Lift Tailgate	●	●	●	●	●	●
Removable Locking Tailgate	●	●	●	●	●	●
Bed Rail System	--	●	--	--	--	●
Cargo Bed Tie-Downs	●	●	●	●	●	●
Tie-Down Cleats (set of 4)	--	●	--	--	--	●
SRS Badges	--	--	--	--	--	●
LTD Badges	--	--	--	--	--	●
Clearance & Backup Sensor	--	--	--	--	--	●

	REGULAR CAB		DOUBLE CAB		CREWMAX	
	DLX LONG	SRS LONG	SRS STD	SRS LONG	SRS LTD SHORT	SRS LTD SHORT
SAFETY	47 L	57 L	47 L	57 L	57 L	57 L
Dual-Stage Driver & Passenger Airbag Supplemental Restraint System (SRS)*	●	●	●	●	●	●
Front Passenger Airbag Off Switch	●	●	--	--	--	--
Front Passenger Airbag Occupancy Classification Indicator	●	●	●	●	●	●
Front Seat-Mounted Side Airbags (SRS)*	●	●	●	●	●	●
Roll-Sensing Front Head/Side Curtain Airbags (SRS)*	●	●	--	--	--	--
Roll-Sensing Front & Rear Head/Side Curtain Airbags (SRS)*	--	--	●	●	●	●
Head/Side Curtain Airbags Off Switch	●	●	●	●	●	●
All-Position 3-Point Lap & Shoulder Belts	●	●	●	●	●	●
Adjustable "B" Pillar Shoulder Belt Anchors	●	●	●	●	●	●
Vehicle Anti-Theft System	--	--	--	--	--	●
Engine Immobilizer	●	●	●	●	●	●
Front Tow Hook	●	●	●	●	●	●
Clearance & Backup Sensor	--	--	--	--	--	●
Automatic Transmission Oil Temperature, Low Fuel, Low Washer Fluid & Door Ajar Warning Indicators	●	●	●	●	●	●
Tire Pressure Monitoring System	●	●	●	●	●	●

PACKAGES						
Regular Cab B Package:	●	●	●	●	●	●
Bed Rail System, Tie-Down Cleats (set of 4), Power Remote-Control Heated Mirrors, Power Door Locks, Power Front Windows w/Driver Side Auto Down, Keyless Entry, Sliding Rear Window, Privacy Glass, Cruise Control, Premium Cloth Seats, Variable Intermittent Wipers, Chrome Grille, Chrome Rear Bumper, Coloured Resin & Chrome Front Bumper, Carpeting, Digital Clock, 18" Aluminum Alloy Wheels w/Wheel Locks, P275/65R18 Tires, SRS Badges	○	--	--	--	--	--
Double Cab B Package:	●	●	●	●	●	●
Front Bucket Seats, Power 8-Way Driver Seat, Telescopic Steering Wheel, Privacy Glass, Rear Window Privacy Glass, Accessory Meter, Overhead Console Box, Sequential Multi-Mode Gate-Type Shifter, Front Seat Back Pockets, Under Rear Seat Storage Trays, Sliding Rear Window, Front Console Box w/Lid, Console Mounted Shift Lever, 18" Aluminum Alloy Wheels w/Wheel Locks, P275/65R18 Tires	--	--	○	--	--	--
Double Cab C Package:	●	●	●	●	●	●
B Package above, plus Bed Rail System, Tie-Down Cleats (set of 4), Clearance & Backup Sensor, In-Dash 6-Disc CD Changer, Integrated Garage Door Opener, Electrochromic Rear View Mirror w/Digital Compass, Fog Lamps, Vehicle Anti-Theft System	--	--	○	--	--	--
CREWMAX C Package:	●	●	●	●	●	●
Clearance & Backup Sensor, In-Dash 6-Disc CD Changer, Integrated Garage Door Opener, Electrochromic Rear View Mirror w/Digital Compass, Fog Lamps, Vehicle Anti-Theft System, Power Tilt/Slide Moonroof w/Sunshade	--	--	--	--	--	○

● = Standard ○ = Optional -- = Not Available

* Airbag Notice: The 2007 Tundra features a driver & front passenger airbag Supplemental Restraint System (SRS) which activates only in a full frontal collision of sufficient magnitude to inflate the bags. In moderate frontal collisions, the airbags may not inflate, in a rear or side collision the airbags are designed not to inflate, so the primary protection is provided by the lap and shoulder belt system. The 2007 Tundra features a front seat-mounted side airbag Supplemental Restraint System (SRS) and a roll-sensing front & rear head/side curtain airbag Supplemental Restraint System (SRS) which activate only in a side-impact collision of sufficient magnitude to inflate the bags. Roll-sensing airbags are designed to deploy at severe tilt degree roll or lateral G-force. *Seatbelts must be worn at all times by all occupants.*

2007 Tundra 4x2 Specifications

	REGULAR CAB		DOUBLE CAB		CREWMAX	
	DLX LONG	SRS LONG	SRS STD	SRS LONG	SRS LTD SHORT	SRS LTD SHORT
MECHANICAL	47 L	57 L	47 L	57 L	57 L	57 L
Engine	●	●	●	●	●	●
4.7 Litre, V8, DOHC, 32-Valve, Variable Valve Timing w/Intelligence (VVT-i), Sequential Multipoint Electronic Fuel Injection, Engine Oil Cooler	●	--	●	--	--	--
5.7 Litre, V8, DOHC, 32-Valve, Dual Variable Valve Timing w/Intelligence (VVT-i), Sequential Multipoint Electronic Fuel Injection, Engine Oil Cooler	--	●	--	●	●	●
Compression Ratio	●	●	●	●	●	●
10.0:1	●	--	●	--	--	--
10.2:1	--	●	--	●	●	●
Horsepower	●	●	●	●	●	●
271 hp (202 kW) @ 5,400 rpm	●	--	●	--	--	--
381 hp (284 kW) @ 5,600 rpm	--	●	--	●	●	●
Torque	●	●	●	●	●	●
313 lb.ft. (424 N.m.) @ 3,400 rpm	●	--	●	--	--	--
401 lb.ft. (544 N.m) @ 3,600 rpm	--	●	--	●	●	●
Suspension	●	●	●	●	●	●
Front: Double-Wishbone, Gas-Filled Shock Absorbers, Coil Springs, Stabilizer Bar	●	●	●	●	●	●
Rear: Heavy-Duty Multi-Leaf Springs, Bias Mounted Gas-Filled Shock Absorbers	●	●	●	●	●	●
Drivetrain	●	●	●	●	●	●
Automatic Limited Slip Rear Differential, Vehicle Stability Control (VSC), Traction Control (TRAC)	●	●	●	●	●	●
Transmission	●	●	●	●	●	●
5-Speed, Automatic, Overdrive, Super Electronically Controlled Transmission (Super ECT), Sequential Multi-Mode Shifter, Lock-Up Torque Converter	●	--	●	--	--	--
6-Speed, Automatic, Overdrive, Super Electronically Controlled Transmission (Super ECT), Sequential Multi-Mode Shifter, Lock-Up Torque Converter, Transmission Cooler, Automatic Transmission Oil Warmer	--	●	--	●	●	●
Column Shifter	●	●	--	--	--	--
Console Mounted Gate-Type Shifter	--	--	○	●	●	●
Brakes	●	●	●	●	●	●
Power-Assisted, Front & Rear Ventilated Discs, Antilock Braking System (ABS), Electronic Brake-force Distribution (EBD) & Brake Assist (BA)	●	●	●	●	●	●
Steering	●	●	●	●	●	●
Rock & Pinion w/Variable Power Assist	●	●	●	●	●	●
Tires	●	●	●	●	●	●
P255/70R18, All-Season Radials, Full-Size Spare w/Steel Wheel	●	--	●	--	--	--
P275/65R18, All-Season Radials, Full-Size Spare w/Steel Wheel	○	●	○	●	●	--
P275/55R20, All-Season Radials, Full-Size Spare w/Steel Wheel	--	--	--	--	--	●

	REGULAR CAB		DOUBLE CAB		CREWMAX	
	DLX LONG	SRS LONG	SRS STD	SRS LONG	SRS LTD SHORT	SRS LTD SHORT
DIMENSIONS	47 L	57 L	47 L	57 L	57 L	57 L
Length	5,810 (228.7)	●	●	●	●	●
	6,290 (247.6)	--	--	●	--	--
Width	2,030 (79.9)	●	●	●	●	●
Height (Unloaded)	1,925 (75.7)	●	●	--	●	●
	1,930 (75.9)	--	--	--	--	--
Cargo Bed Length	2,480 (97.6)	●	●	●	--	--
	2,000 (78.7)	--	--	--	--	--
	1,695 (66.7)	--	--	--	--	●
Cargo Bed Width (Between Wheel Wells)	1,270 (50.0)	●	●	●	●	●
Cargo Bed Depth	564 (22.2)	●	●	●	●	●
Wheelbase	3,700 (145.6)	●	●	●	--	●
	4,180 (164.5)	--	--	--	--	--
Tread	Front: 1,725 (67.9)	●	●	●	●	●
	Rear: 1,725 (67.9)	●	●	●	●	●
Seating Capacity	3	●	●	--	--	--
	5	--	--	--	--	--
	6	--	--	●	--	--
Headroom	Front: 1,021 (40.2)	●	●	●	●	●
	Rear: 983 (38.7)	--	--	●	●	



TUNDRA 07

YARIS
HATCHBACK



RAV4

YARIS



HIGHLANDER

COROLLA



HIGHLANDER
HYBRID

MATRIX



4RUNNER

SOLARA



SEQUOIA

CAMRY



FJ CRUISER

CAMRY
HYBRID



PRIUS
HYBRID



AVALON



TACOMA

SIENNA



TUNDRA



For more information on Toyota vehicles, please visit your local Dealer or toyota.ca.



Toyota recognizes its duty to safeguard the environment. To support this concern, our brochure is printed on recycled paper with vegetable-based inks to be fully recyclable.
PRINTED IN CANADA C0002-0467E-25 65M