



GTI Mk V

GTI Mk V



VW07GTISBCE 

vw.ca





makefriendswithyourfast



makefriendswithyourfast

GTI Mk V



GTI Mk V





fig. 01 your fast.
according to data collected from thousands of respondents nationwide, this is what your fast looks like. and it comes standard with the GTI Mk V. it's completely portable, it works day or night, it makes everything more fun and 9 out of 10 chicks dig it. think of it as your co-pilot, your alter ego, your friend. it's your fast. take good care of it.

how well do you know your fast?
take the quiz inside and find out.

inside most of us there is a fast^{see fig 01}—
and the GTI Mk V was designed down
to the last detail to satisfy it—born on
the German autobahn this turbocharged
torque out wound up 200 horsepower
GTI is an automobile built by
enthusiasts for enthusiasts—built for
a generation that knows the flash of a
red grille stripe in a rear view mirror
means move over—this is the car that
created a category—this is the return
of the original pocket rocket—say hello
to the GTI Mk V—and make friends
with your fast*



* if you're interested in the GTI Mk V you probably don't like being slowed down by anything, even punctuation or

spaces between words. you'll notice we've eliminated most of that from this brochure. you're welcome very much.



if your right foot were made of something other than flesh and bone it would be made of:

1. the element known as "uranium" – one of the heaviest materials yet known to science.
2. lead – a classic choice.
3. carbon fiber – durable and lightweight.
4. money. just because.
5. something pretty and stylish.

which of the following would be a dream experience?

1. being strapped to the nose of the space shuttle during launch.
2. being slung off an aircraft carrier in a fighter jet.
3. an afternoon on the autobahn.
4. a brisk bike ride through the fragrant french countryside.
5. lying on the beach with a good book for 14 days straight.



torque –

when it comes to performance horsepower and 0 to 100 km/hr time get all the glory – but your fast craves torque too – torque is a measure of the rotational force that twists the crankshaft – but for those of us without a physics degree it's that kick of g's you feel coming off the line – torque is the unsung hero of performance and the GTI delivers it huge – variable valve timing variable length intake manifold and forced induction translate to a maximum 207 lbft at 1800 to 5000 rpm – plain english it hauls – your fast will eat it up –

<-----
0-happy in 6.9 seconds

<-----
alloy pedals
go ahead. stand on them as hard as you want.

<-----
xenon headlamps
high-intensity gas-discharge lamps with a builtin washer system. housed in chip-resistant polycarbonate lenses. great for seeing things in front of you before they go whizzing by.



----->
interlagos plaid
 to the uninitiated, it's a quirky choice.
 to the enthusiast, it's the only choice.



----->
instrument cluster
 that unearthly blue glow—it's truly unbelievable how
 much this little detail enhances the driving experience.
 test-drive after sunset if possible.

strap in your fast—
 anyone who's ever sat inside a GTI
 knows there's something about it—
 here's what that something is—it's
 an interior that's designed with
 simplicity and purpose—it's a
 meticulous consideration for
 every sight, sound and texture—
 it's leather where there should be
 leather—aluminum where there
 should be aluminum—a sport seat
 that wraps you up—a race car's
 steering wheel that begs to be
 gripped with both hands—an
 unearthly blue glow from the
 instrument cluster—it's the way it
 all comes together—experience
 it yourself and you'll see—there's
 just something about it—



----->
grab handles
 most cars have the grab handles mounted above
 the doors, but the GTI has an extra set on the centre
 console. we think these send a pretty clear message.



when ready to check out of the grocery store, you...

1. panic if even one person is in front of you, leave your cart, and exit the store.
2. force however many items you have into the express lane.
3. trim ballast until you're left with only ten items, then hit the express lane.
4. wait patiently in the shortest line.
5. choose the longest line. it's fun to wait.

you think the legal speed limit should be...

1. infinity.
2. what's the speed limit on the autobahn?
3. 100.
4. 75.
5. a nice even 50.

to you, the ideal passenger is...

1. a screamer.
2. weightless.
3. a racing instructor.
4. a caring and conscientious friend.
5. 200 kilos and eating a bag of nacho cheese flavored chips.



----->

steering wheel

three spokes, leather-wrapped. drivers of open-wheel race cars use the flat surfaces at 8:00 and 4:00 to steer with their knees during a victory lap.

note: this is 100% NOT something we recommend.

GTI

----->
the badge
the original GTI badge is back.
a small touch. a big statement.

6 on the floor
standard 6-speed manual transmission.
it doesn't rhyme. it performs.

----->



engineering—
more than twenty years ago
a team of scrappy young
volkswagen engineers
fashioned a prototype for the
world's first hot hatch—amazingly
they did so entirely on their own
free time—labor of pure passion
for performance—the result
of that labor has become
automotive legend—a car built
by enthusiasts for enthusiasts—
we designed this fifth generation
GTI to honor that heritage—
tous that meant fanatical attention to
performance above all else—
starting where it counts—under
the hood—

engine—
the GTI Mk V is driven by a
lightweight high-revving big
breathing turbocharged
intercooled direct fuel injected
200 horsepower 2.0—it goes
0 to 100 km/hr in just 6.9 seconds and
tops out at 208 km/hr*—of course
we urge you to obey all speed
limits and traffic laws—your
fast will approve—

<-----

the 2.0t
a turbocharged, intercooled, direct-fuel-injected,
200 hp thing of beauty.

*electronically governed top speed.

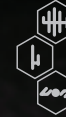


you're running late for the movie, you...

1. wonder if you could actually drive fast enough to reverse the spin of the earth and go back in time.
2. consider it a challenge.
3. take that special shortcut you discovered the last time you were running late.
4. don't mind, nothing good happens in the first 20 minutes anyhow.
5. stay home, by the time you make it the film will be over.

while waiting for elevators you...

1. spew a steady stream of unspeakable profanities.
2. refine your innovative jet pack designs.
3. whack away at the button non-stop.
4. make polite conversation with the fellow standing next to you.
5. take a moment to reflect upon the precious gift of life.



dsg—
the GTIMkV comes standard with a 6-speed manual transmission—but it's also available with dsg automatic with tiptronic® and paddle shifting—technically the dsg is two gearboxes with two clutches in one—the transmission can be driven in automatic or tiptronic manual mode but in either case the next gear up and down is always preselected—when you shift or when the box does it for you one clutch engages while the other one disengages—all in about 0.2 seconds—all without ever taking your foot off the accelerator—and the shifting paddles are mounted on the steering column—so in manual mode your hands never leave the steering wheel—just whap whap whap your way through the gearbox—smooth quick accurate shifting—your fast will think it's gone to heaven—

----->

paddles are for spanking optional dsg automatic transmission with tiptronic® and paddle shifting. whap, whap, whap and you're gone.



<-----

alloy wheels

17" hot wheels for the original hot hatch.

esp—

faced with a stretch of twisting road
your fast can get a little rambunctious
—so we built the GTI with a complex
system of stability control to help
you carve corners while keeping all
four tires stuck to the pavement —the
electronic stabilization programme
esp constantly monitors the direction
you're steering in relation to the
direction the GTI is actually moving
—when those two directions aren't
exactly the same the esp kicks
into action —together with the
abs it automatically applies brake
to the appropriate wheel to
help compensate for any over
or understeer —before you ever
know you're in trouble you're out of
it —of course we also understand
there are certain things you just can't
accomplish while the esp is engaged
—that's why we built it with an on/off
switch* —hey it's your fast —have it
whichever way you like —

*volkswagen recommends keeping esp on under most driving conditions.



built to autobahn standards of safety—when you design automobiles for a highway system without speed limits there's really no such thing as an excessive safety standard—there's a whole culture of engineering expertise helping to keep you protected in the GTI—but just as importantly it's helping to keep everyone else protected too—in the GTI passengers and drivers all enjoy an uncompromising level of safety—and while that certainly says something about the people who make the GTI it also says something pretty great about the people who own them—it says you're not the type of person who's all about me me—it says you're the type who's all about me you you and the other guy too—

← ----

alphabet brakes
abs + ebd + hba = enhanced control

----->

safety cell construction
in the GTI, passengers and driver travel inside a rigid cage of laser welded reinforced steel.



complete the following sentence:
music while driving...

1. can't compare to the whine of a turbocharger.
2. reminds me that the stereo is sucking precious wattage from the engine.
3. gets me all fired-up.
4. starts my toes-a-tappin' and my fingers snappin'.
5. is a distraction, driving is difficult enough without it.

you're on a long road trip and you get hungry, you...

1. suck it up, food just weighs you down anyway.
2. grab a six-day-old hot dog and some park rinds at the next filling station.
3. hit the drive-thru.
4. pull over for a leisurely roadside picnic.
5. vow to never take another long road trip as long as you live.

side curtain protection[®]*

airbags deploy down the roofline from the a-pillar to the c-pillar to help minimize head and upper torso injury in the event of side impact.

automatic locking feature

locks automatically engage at 13 km/hr and unlock automatically should the airbags deploy.

front seat safety belt pre-tensioners with load limiters

in a severe front-impact, the turbines in the pre-tensioners explode reeling in excess safety belt slack.

crash-active front head restraints

help minimize whiplash injuries from rear-end collisions.

pinch-protection on power windows

a closing window reverses if there's any obstruction.

latch

lower anchors and tethers for children, a standardized child-safety seat system.

dual front and side airbags*

deploy within a tenth of a second

steering wheel

deformable/collapsible on impact.

safety cell construction and anti-intrusion side door beams

driver and passengers travel inside a rigid cage of reinforced steel.

trunk escape handle

there's a fluorescent reflector on the inside so it can be found easily.

asr, edl, eba

improve handling and prevent compression-induced skidding in slippery conditions.

alphabet brakes

abs + ebd + hba = enhanced control

esp

complex stability control system helps prevent over or understeer.

crash optimized front and rear ends

designed to divert impact energy away from cab occupants.

*airbags are supplemental restraints only and will not deploy under all accident scenarios. always use safety belts and seat children only in the rear, using restraint systems appropriate for their size and age.



roadside assistance

4-year, unlimited mileage, 24-hour protection by professional dispatch group (pdg). peace-of-mind when you're out on the lonely road.

colours—

the GTI is a performance car down to the core—and everybody knows performance cars don't come in fuchsia—so when talk turned to paint we took the classic route—so you can make a colour choice the same way you do everything else—fast—

gray—it's the colour of foreboding storm clouds looming on the horizon—it's the colour of cold unfeeling uncaring stone—it's the colour of battleships—it's not black—it's not white—it's blight—

black—it shows you spot the bad guys—it's bloodsucking vampire bats and unlucky cats and poisonous snakes and spiders and dravens that peck you're eyeballs out—and it's asphalt—it's a classic—

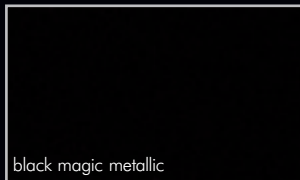
white—as in knuckles—it's blood rushing from faces—it's the colour of fear—it's the spooky ghost that appears one minute and disappears the next—it's surprisingly easy to keep clean depending on the colour of dirt where you live—and it's always cool—even in the summertime—

silver—it's metal—it's polished—it's a full suit of armor and a broadsword—if it made an noise it would go shah-shing—it's an unidentified flying object—it's the colour of quick—

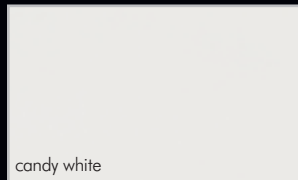
red—it's a warning—it's the marking on a dangerous animal—it's a nasty burn—it's the colour of guts—and deep down it's whatever sports car really wants to be—it's timeless for good reason—it's always hot—



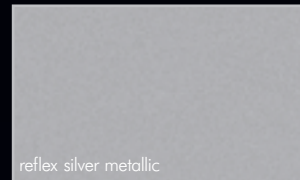
united gray metallic



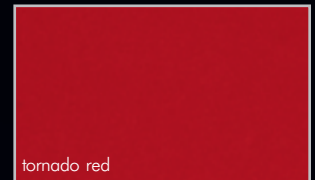
black magic metallic



candy white



reflex silver metallic

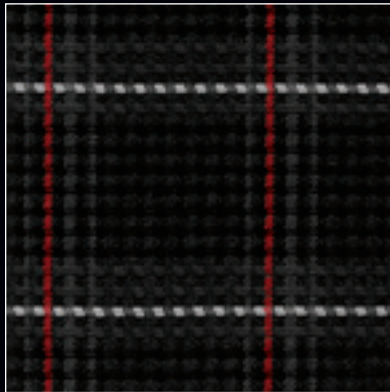


tomato red

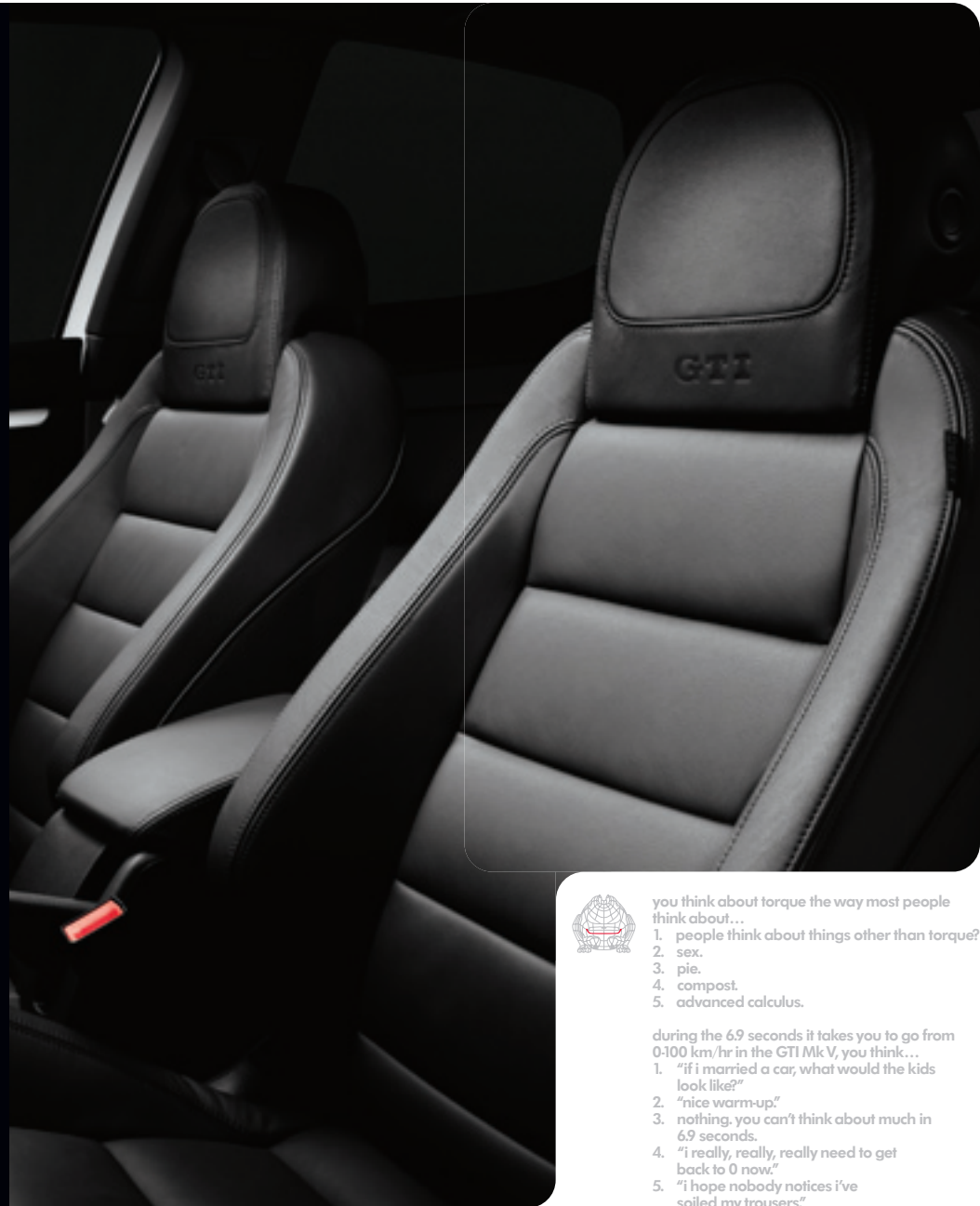




interior fabrics –
the GTI Mk V sport seats are available
in leather or in interlagos plaid fabric –
that's right – plaid – it's a GTI thing –



----->
sport seats
with special side bolsters for support, these seats sit
you up straight and make you pay attention. available in
hand stitched leather and interlagos plaid (of course).



you think about torque the way most people
think about...

1. people think about things other than torque?
2. sex.
3. pie.
4. compost.
5. advanced calculus.

during the 6.9 seconds it takes you to go from
0-100 km/hr in the GTI Mk V, you think...

1. "if i married a car, what would the kids
look like?"
2. "nice warm-up"
3. nothing. you can't think about much in
6.9 seconds.
4. "i really, really, really need to get
back to 0 now."
5. "i hope nobody notices i've
soiled my trousers."



1.



2.



3.



4.



5.



6.



7.



8.



9.

vwdrivergear.com—
 weputalotintotheGTIto
 makeyourfasthappy—butwe
 alsounderstandthatyourfastis
 differentfromeveryoneelse’s—
 maybeyou’relookingfor
 optionsonthealloywheels—
 maybeyou’reintoground
 effects—ormaybeyouneed
 someextrariggingforwhen
 yougofreeridinguponthenorth
 shore—that’swhywsetup
vwdrivergear.com—think
 ofitasapersonaloutfitterfor
 yourveryuniquebrandoffast—

←-----

1. body kit (includes front spoiler, side skirts and rear valance)

←-----

2. 17" exis wheel

←-----

3. 6-speed golf ball shift knob

←-----

4. 18" vision wheel

←-----

5. base carrier bars and barracuda™ bike holder (upright – base carrier bars can fit 3 barracuda™ bike holders)

←-----

6. 18" karthoum wheel (in silver)

←-----

7. GTI monster mats™ & carpeted mat with red GTI logo

←-----

8. 17" activa wheel

←-----

9. gorilla gear™ trunk liner and organizer blocks

keeping your fast happy – keeping you happy –
 when you tear out four lot with a new GTI and a nice happy
 fast our goal is to make sure your fast stays happy – which
 means making sure you stay happy – which means servicing
 your GTI like it was our very own – it'll always be one of our little
 guys after all – so go have fun with your GTI – we'll be here when
 you need us –

basic limited warranty –
 every GTI comes with a bumper to bumper new vehicle
 limited warranty for 4 years or 80,000 kilometres whichever
 comes first –

powertrain limited warranty –
 the Volkswagen powertrain limited warranty provides 5 years
 or 100,000 kilometres of protection whichever comes first –

**limited warranty against
 corrosion perforation –**
 a fully galvanized steel body means we can offer you a
 12 year unlimited kilometre limited warranty against
 corrosion perforation –

roadside assistance –
 the GTI has a 24 hour a day roadside assistance package for
 4 years unlimited distance provided by professional dispatch
 group pdg – wherever you go we got your back –

exterior specs

window mounted diversity antenna	s
dual oversized stainless exhaust pipes	s
anti-intrusion side door beams	s
tinted glass, blue	s
black front grille with honeycomb mesh and red surrounding strip	s
high intensity gas-discharge headlamps (xenon) and headlight washer system with clear, lightweight, chip resistant polycarbonate lenses	s
halogen foglights, integrated into front bumper	s
side blinkers integrated into side exterior mirrors	s
driver and passenger side power exterior mirrors, heatable	s
power glass sunroof with tilt, slide, tinted glass, manual sunshade, pinch protection, and driver's door power lock operated convenience closing feature	o
rear spoiler located above rear hatch	s
225/45 r17 h, all-season performance tires	s
225/40 r18 h, summer performance tires	o
205/55 r16 h, space-saving steel spare wheel and all-season tire	s
7j x 17" alloy wheels	s
7.5j x 18" alloy wheels	o
anti-theft wheel locks (limited availability)	s
windshield wipers with variable intermittent wipe feature	s
heatable windshield washer nozzles, front	s

interior specs

manual single-zone climate control (climatic), cfc-free	s
anti-theft vehicle alarm system for doors, hood, trunk lid, radio, and starter, with warning led in door top sill and with audible and visual activation	s
immobilizer theft deterrent system	s
cruise control stalk	s
brake wear indicator	s
illumination of controls and gauges – blue, with red indicators	s
multi function trip computer: featuring trip time, trip length, average trip speed, average trip fuel consumption, current fuel consumption, miles to empty, compass, radio station display, personalizing functions.	s
folding keys (2) with radio-frequency remote transmitter for central locking, eyelet valet key	s
remote central power locking system with selective unlocking and key operated convenience open and close feature (windows)	s
aluminum interior trim	s
power outlet (sae size) in trunk	s
2 power outlets (sae size) in centre console	s
premium am/fm radio sound system with in-dash 6-disc cd changer, mp3 format readable, 10 speakers, theft-deterrent warning light and coding system.	s

interiorspecs

driver and front passenger front airbag supplemental restraint system	s
driver and front passenger side thorax airbag supplemental restraint system	s
side curtain protection®	s
crash active front head restraints	s
emergency locking retractors for all seating positions	s
front seat safety belts pre-tensioners with load limiters	s
height adjustable front 3-point safety belts, color coordinated	s
rear 3-point safety belts, all 3 seating positions, color coordinated	s
latch (lower anchors and top-tether for children. formerly known as isofix)—child seat lower attachment points and top tether rear outboard seating positions	s
child seat tether anchorage points with markings in rear seating positions	s
buckle switch (sensor that deploys airbag depending on safety belt use)	s
interlock feature—centre rear safety belts cannot be extended unless seat back is in fully locked position	s
8-way manually adjustable sport front seats: fully reclining, height adjustable with adjustable (height & angle) lockable head restraints	s
top sport front seats with lumbar adjustment	p
heatable front seats	s
rear seat head restraints, height adjustable, all seating positions	s
60/40 split folding rear seat with center armrest and pass-through	s
3-spoke leather wrapped multi-function sport steering wheel, with audio controls (includes paddle shifters on both sides of steering wheel when equipped with optional 6-speed automatic direct shift gearbox)	s
height adjustable and telescoping steering column	s
steering wheel deformable/collapsible upon impact	s
theft-deterrent steering column	s
alloy pedals	s
chrome interior door handles	s
trunk escape handle—emergency internal release mechanism to unlatch trunk lid.	
fluorescent reflector for location.	s
removable storage divider	s
interlagos plaid sport seat fabric	s
anthracite leather seating surfaces	p
air diffuser mounted centrally in-dash	p
pollen/odor filter	s
power windows with pinch protection and automatic one-touch feature, operable from driver's side only	s

optionprogramme

luxury leather package

power sunroof, top level sport front seats, leather seating surfaces	o
6-speed automatic direct shift gearbox with tiptronic®	o

optionprogramme

7.5j x 18" alloy wheels with 225/40 r18 h summer performance tires	o
power sunroof	o

technicalspecs

engine

type: 4 cylinder, in-line, turbocharged with intercooler and direct fuel injection
displacement: 121.0 in ³ 1,984 cm ³
compression ratio: 10.3:1
horsepower (sae) @ rpm: 200 @ 5,100-6,000 (147 kw @ 5,100-6,000)
maximum torque, lbs - ft @ rpm: 207 @ 1,800-5,000 (280 nm @ 1,800-5,000)
fuel requirement: premium unleaded recommended for maximum performance

engine design

arrangement: front mounted, transverse
cylinder block: cast iron
crank shaft: forged steel, five main bearings
cylinder head: aluminum alloy
valve train: dual overhead camshaft, belt driven, four valves per cylinder, maintenance free hydraulic lifters
fuel/air supply: fully electronic engine management with drive-by-wire throttle control, fsi®

body, chassis and suspension

type: utilized construction, bolt-on front fenders
front suspension: independent mcpherson struts, coil springs, telescopic shock absorbers, integrated stabilizer bar (sport suspension)
rear fully independent four-link suspension with coil springs, telescopic shock absorbers and stabilizer bar
drag coefficient .32

steering

electro-mechanical variable assisted power rack-and-pinion steering	s
---	---

brakes

abs (anti-lock braking system)—standard, all four wheels, 3-channel with electronic brake pressure distribution, anti-slip regulation (asr) and electronic differential lock (edl), electronic stabilization programme	s
red front and rear brake calipers	s
ebd—electronic brake-pressure distribution	s
hba—hydraulic brake assistant	s

traction control

asr—anti-slip regulation	s
edl—electronic differential lock	s
eba—engine braking assist prevents compression-induced skidding in slippery conditions	s
electronic stabilization programme	s

drivetrain

front wheel drive

technicalspecs

transmission

6-speed manual transmission	s
6-speed automatic direct shift gearbox with tiptronic® and sport mode	o
cable shift mechanism—manual transmission only	s
clutch starter interlock for manual transmission. vehicle will not start if clutch is not depressed.	s
hydraulic clutch for manual transmission	s

interior volume - sae

seating capacity	five			
passenger volume	94.2 ft ³	2.7 m ³		
cargo volume	15.1 ft ³	0.4 m ³		
	front		rear	
volume	51.3 ft ³	1.5 m ³	42.9 ft ³	1.2 m ³
head room	39.3 in	998 mm	38.5 in	979 mm
shoulder room	54.7 in	1,390 mm	54.6 in	1,386 mm
leg room	41.2 in	1,046 mm	35.3 in	896 mm

dimensions

wheelbase	101.5 in	2,578 mm		
front track	60.6 in	1,540 mm		
rear track	59.8 in	1,518 mm		
length	165.8 in	4,210 mm		
width	69.3 in	1,759 mm		
height	58.2 in	1,479 mm		
ground clearance	5.4 in	137 mm		

weight

	manual		automatic	
curb weight	3,308 lbs	1,500 kg	3,352 lbs	1,520 kg
front	1,958 lbs	888 kg	2,002 lbs	908 kg
rear	1,349 lbs	612 kg	1,349 lbs	612 kg
payload	1,032 lbs	468 kg	1,032 lbs	468 kg

fuel consumption

	manual		automatic	
city	10 l/100km		9.4 l/100km	
highway	6.9 l/100km		6.9 l/100km	

capacities

fuel tank:	14.5 gal	55.0 l
------------	----------	--------

warranty

12 year/unlimited distance limited warranty against corrosion perforation	s
5 year/100,000 km (whichever occurs first) powertrain limited warranty	s
4 year/80,000 km (whichever occurs first) new vehicle limited warranty. wear & tear items and adjustments excluded after initial 12 month/20,000 km (whichever occurs first).	s

roadsideassistance

roadside assistance 4-year/unlimited distance, 24-hour, provided by professional dispatch group	s
---	---

High-performance tires are designed for optimum performance and handling in warm climates. They are not suitable for cold, snowy, or icy weather conditions. If you drive under those circumstances, you should equip your vehicle with all-season or winter tires, which offer better traction under those conditions. We suggest you use the recommended winter or all-season tire specified for your car or its equivalent. These high-performance tires also have a lower aspect ratio that aids performance and handling; however, in order to avoid tire, rim or vehicle damage, it is important that the inflation pressure is regularly checked and maintained at optimum levels. Please also remember in making your selection that, while these tires deliver responsive handling, they may ride less comfortably and make more noise than other choices. Finally, these tires may wear more quickly than other choices. Volkswagen Canada, Inc. believes the information and specifications in this brochure to be correct at the time of printing. Specifications, standard features, options, fabrics, and colors are subject to change without notice. Some features may be unavailable when your vehicle is built. Some vehicles are pictured with options that may be available at extra cost or may not be available on some models. Ask your dealer about the availability of options and verify that the vehicle you ordered includes the equipment you ordered. Tires are supplied and warranted by their manufacturer. Transport Canada fuel mileages are estimates only. Your fuel consumption may vary. "Volkswagen," the Volkswagen logo, "GTI" and "DSG" are registered trademarks of Volkswagen AG. "Side Curtain Protection" are registered trademarks of Volkswagen Canada, Inc. "Climatronic" is a trademark of Volkswagen Canada, Inc. "Tiptronic" is a registered trademark of Dr. Ing. h.c. F. Porsche AG. For further information regarding any Volkswagen model, please call 1-800 DRIVE VW or just look us up at vw.ca. ©2006 Volkswagen Canada, Inc. Printed in U.S.A. Before we sign off, remember, please don't drink and drive, and always remember to obey traffic laws. (Sometimes, the most important words are saved for last.)

type 11-20

A

your fast is frightening and it should probably be locked away forever. we could beg and plead with you not to purchase the GTI Mk V. but frankly, we think our admonitions might make you want one even more. we can only hope that your friends and loved ones will be able to talk some sense into you before you enter into an unhealthy relationship with this automobile.

type 21-30

B

your fast is hearty, robust, and aggressive. when we built the GTI Mk V, we did it for a fast just like yours. after all, your fast is just like ours. your fast is an enthusiast. a purist. your fast appreciates driving as a complete sensory experience. with proper care and feeding, you and your fast will enjoy a mutually beneficial relationship for years to come.

type 31-40

C

your fast sits somewhere right on the apex of the fast bell curve. with just a bit more exercise and attention, your fast could grow to be a formidable and powerful one – a fast to be reckoned with. but deprived of torque or horsepower, your fast could just as easily wither into a sleepy decline. GTI or no GTI, the future of your fast lies in your hands.

type 41-50

D

your fast is severely atrophied. can the GTI Mk V help? it's possible. but you need to take action now. you've got to be willing to put in the kilometres, carve the hard corners, and work the transmission like you've never worked a transmission before. in time, we're confident your fast can make a complete recovery and lead a happy, healthy life.

type 51 +

F

you are the rare case. your fast is completely non-existent. many grandmothers have more of a fast than you. there's not a single sluggish bone in your body that would be interested in the GTI Mk V. in fact, we suggest you consider some other mode of transportation entirely. perhaps one of those electric mobility scooters with a nice basket on the front for your needlepoint.

<-----

so how well do you know your fast?
to tally your score, simply add together the numbers
corresponding to your answers. then, refer to the key.





everyGTIcomeswithfast