



Das Auto.

2010 Golf



2010 Golf

Contents

03	Intro
05	At a glance
06	Technology
11	Exterior
13	Interior
14	Golf Wagon
19	Golf GTI
23	TDI Clean Diesel
24	BlueMotion Technologies
27	Safety
29	Accessories
32	Specs
49	Warranty



We're speechless. Well, almost.

How do you become the 2009 World Car of the Year? You roll up your sleeves. You get your hands dirty. And you push things further than you've ever pushed them before. The end result? A shiny new trophy of a vehicle and the sixth generation of an automotive legend: the all-new 2010 Golf. Provocative curves, German-engineered performance, a brilliant white lighting instrument panel, a sleek driver-friendly interior—and that's just for starters. There are now more Golf models than ever before. An all-new Wagon joins the 3- and 5-door hatchbacks under the Golf banner—with a TDI Clean Diesel version available for both the 5-door and Wagon. And yes, the iconic Golf GTI makes a comeback too—sleeker, meaner and more adrenalin-charged than ever.



At a glance.

And the winner is.

An international jury of 59 automotive journalists from 25 countries put the 2010 Golf through its paces and chose it as their 2009 World Car of the Year. Of course, that reflects well on us. But it will surely reflect well on you, too. Just head out in a brand new Golf and see the reaction it gets on the highway.

It's all about the drive.

The all-new Golf is German-engineered right down to the last detail and raises the bar once again. This is our sixth generation of class-leading Golf, the product of years and years of refinement, and the relentless pursuit of building a better compact car. You get power when you need it from a 2.5L, 170 horsepower engine with 177 lb-ft of torque and legendary Autobahn-inspired handling to keep you glued to the road from downtown to out of town and everything in between.

TDI Clean Diesel.

It's a win-win situation. The 2010 Golf TDI Clean Diesel gives you great fuel efficiency, low emissions and an engine with powerful torque. For you, this means going a lot further on one tank than you ever imagined. And for the environment, it means going a lot further in minimizing your carbon footprint.



WORLD CAR OF THE YEAR
WORLD CAR AWARDS

Good news travels schnell. Yes, that fast.

Especially when you've got a 2.5L, 170 horsepower engine and 5-speed manual transmission, or available 6-speed automatic transmission with Tiptronic® for those who like the best of both worlds. Then there's the available 2010 Golf TDI Clean Diesel—power and performance that will leave you breathless. And with low emissions and mileage that takes you from here to really out there on a single tank (more than 1190 km per tank*, in fact), this is one secret that you're going to have a hard time keeping under your hood.

*Fuel consumption figures are estimates based on the Government of Canada's approved criteria and testing methods with an estimated fuel consumption rating of 4.6L/100 km (highway) for the 2010 Golf TDI Clean Diesel equipped with an automatic transmission and a 55L fuel tank capacity. City rating is 6.7L/100 km. Actual fuel consumption may vary based on driving conditions, driver habits and vehicle's additional equipment.



Let's get digital.

When it comes to keeping you entertained and staying connected, the sixth generation Golf turns things up a few notches. An available Premium 8 sound system with 8-speaker in-dash 6-disc MP3 format readable CD changer, and 6.5-inch touch screen or available Media Device Interface (MDI) with MP3 player connectivity should keep you in a permanent groove. And on the extremely rare chance you should run out of tunes, there's always 120 channels of available SIRIUS Satellite Radio to tune in to. One more thing: with available *Bluetooth*® Mobile Phone Connectivity, the world is literally at your fingertips.





Look who's been to the gym.

We've added just the right amount of muscle. Sculpted, seriously toned, and a shape that you just can't take your eyes off of, the 2010 Golf has some serious curb appeal. From the slick low profile front grille and tailgate to the redesigned wheels, headlights, taillights, bumpers, emblem, hood, exterior door handles and body-colour matching exterior mirrors, beauty is truly in the eye of the beholder. Trust us, there will be a lot of beholders.



You're in the heated driver's seat.

There's nothing new about the heated front seats—it's one of those Volkswagen options that never ceases to please—but there's a great deal to be said about the Golf's new interior. Take a seat, we'll be brief. A totally redesigned instrument cluster with brilliant white lighting and intuitive controls and switches like those on the available Premium 8 radio with touch screen, plus available sport leather seats, easy pass-through ... okay, we said we'd be brief but there's more.

This is the quietest Golf ever. We thought that would get your attention. Our engineers worked very hard using advanced techniques too numerous to mention here so your ride would be smooth and whisper quiet. But not too quiet—we know there's nothing more pleasing to the ear than a Volkswagen transmission shifting into high gear.

If you want to show the world your bold side, the Golf Sportline may be right up your alley. Sport cloth seats, 17" alloy wheels and a sport suspension for those tight curves all add up to a more—you guessed it—sporty attitude that reflects your priorities.



Welcome the new addition to the family.

The 2010 Golf Wagon will put an ear-to-ear smile on the face of many a parent. No matter what you're packing: kids, snowboards, hockey equipment, you can leave it all behind you thanks to the 0.93 cubic metres of cargo space. But don't look back, because the Golf Wagon comes with the same road-embracing performance and power as its hatchback version—choose from a 2.5L, 170 hp gasoline engine or a 2.0L, 140 hp TDI Clean Diesel engine.





Everyone travels first class.

Our engineers have turned their attention to the interior of the Golf Wagon too, improving all the things you loved and adding extra features for even more to love. It's sleeker than ever, full of sophisticated details and totally intuitive to operate. And it offers a whopping 1.89 cubic metres of space with the rear seats folded. Prepare yourself for a host of driver-friendly features like white lighting and a touch-screen Premium 8 radio*. In fact, thanks to an available panoramic sunroof, you may feel like you've got your head in the clouds. Just make sure to keep your eyes on the road.

*Premium 8 radio is available with the Multimedia Package on Comfortline and standard on Highline.



The art of rocket science.

The ultimate performance package, the 2010 Golf GTI turns the most ordinary of roads into something special. Blast off with the legendary 2.0 TSI engine (the T stands for Turbo) and a 6-speed manual transmission or available 6-speed DSG transmission with paddle shifting. DSG stands for Direct Shift Gearbox, which enables you to shift so smoothly and quickly (4/100ths of a second) that you'll wonder whether you shifted at all. You may also wonder just how our engineers invented the Electronic Transverse Differential Lock (XDS for short)—a race-inspired innovation that maximizes traction, reduces understeer and improves overall response in corners. Or how they managed to lower the sports suspension another 10 mm from the previous GTI. Bi-Xenon headlamps with Adaptive Front-light System (AFS) and available 18" alloy wheels complete the package and ensure there's never a dull moment—night or day.

Your cockpit is waiting.

It's not just what's under the hood that counts. Under the roof matters just as much. That's why we equipped the brand-new redesigned cabin with things like Climatronic control, specially fitted and finished sport seats, *Bluetooth* Mobile Phone Connectivity, available satellite navigation and a Dynaudio® Sound System that puts you firmly in the captain's seat. Countdown to ignition ...





European model shown.

TDI[®]
Clean Diesel

Good cleaner fun.

The Golf TDI Clean Diesel. Eco-friendly, fuel-friendly and, best of all, driver-friendly. The future of diesel driving combines low emissions and fuel economy of more than 1190 km per tank* without sacrificing any of the German-engineered power and performance that you'd expect from a Volkswagen. In fact, the 2.0 TDI 140 horsepower 6-speed manual or available 6-speed DSG automatic with Tiptronic engine produce a mighty 236 lb-ft of torque—the most in its class**. The Golf TDI Clean Diesel fulfills your love for driving without compromising your concern for the environment.

*Fuel consumption figures are estimates based on the Government of Canada's approved criteria and testing methods with an estimated fuel consumption rating of 4.6L/100 km (highway) for the 2010 Golf TDI Clean Diesel equipped with an automatic transmission and a 55L fuel tank capacity. City rating is 6.7L/100 km. Actual fuel consumption may vary based on driving conditions, driver habits and vehicle's additional equipment.

**Volkswagen has the highest torque rating in the compact car class.

BLUEMOTION

TECHNOLOGIES

BlueMotion™ Technologies is the comprehensive brand name for all the Volkswagen innovations that are designed to help the environment—and help you get more out of your driving experience. It's our commitment to ensuring responsible mobility for years to come. And it's something you can already find in just about every Volkswagen model. Things like drastically reduced fuel consumption and CO₂ emissions that allow you to do a lot more with a lot less impact. More eco-friendly and economical engines, improved transmissions, better aerodynamics, weight-reduction technologies—all of these BlueMotion features are designed with one goal in mind, to help our planet breathe a little easier without diminishing the performance you've come to expect from a Volkswagen. We think you'll like what we're driving at.

DSG

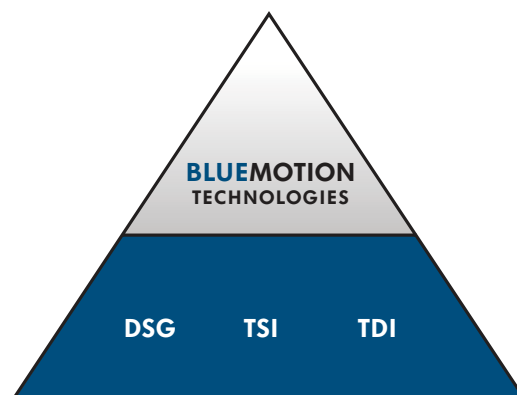
A definite shift for the better. DSG stands for Direct Shift Gearbox. In essence, it gives you the convenience of an automatic with the performance and efficiency of a manual. Here's how it works. DSG is managed by dual electronically controlled clutches, so not only do you shift faster, you also get enhanced acceleration and reduced fuel consumption. In fact, thanks to DSG, each shift takes less than 4/100ths of a second. And if you're the manual type, a quick flip of the Tiptronic function lets you shift into something a little sportier.

TSI

TSI brings together the power of FSI® direct fuel injection with the extra oomph of a turbocharger. The end result? An ultra efficient engine that provides maximum torque from 1,700 to 5,000 rpm, gives you outstanding performance through a wide range of speeds, power when you really need it, ultra low fuel consumption and, ultimately, lower CO₂ emissions.

TDI

TDI Clean Diesel is the new way of driving diesel. "Clean Diesel" encompasses two things: engine technology that reduces emissions to extremely low levels, and the ultra low sulfur diesel fuel now available at pumps across the country that enables the technology. As for "TDI," it stands for Turbocharged Direct Injection. But how does all this work? In a nutshell, the turbocharger supplies the engine with pressurized fresh air for maximum efficiency during cylinder charging. After compression, clean diesel fuel is injected straight into the cylinders at very high pressure. This results in outstanding fuel economy, low emissions and a whole lot of torque. And with engine noise and vibration drastically reduced with more effective engine encapsulation the old telltale sound of a diesel engine has been reduced to a mere whisper. Now that's something worth shouting about.





This is a dramatization and does not depict what will happen in a real accident. Airbags will not inflate simultaneously upon a collision. If multiple bags do deploy they will inflate/deflate at different rates and will never all be inflated at the same time.

Electronic Transverse Differential Lock (XDS) is standard on the Golf GTI.

Safety doesn't happen by accident.

Every Volkswagen comes standard with lots of features that work in harmony to both help you avoid an accident and help protect you if an accident is unavoidable. And we are constantly updating it, because when it comes to safety, there is no finish line.



6 standard airbags*
Every Golf comes standard with front and side thorax airbags for front seat passengers, as well as Side Curtain Protection airbags which can deploy in severe side impacts to help reduce head injuries for front and rear seat occupants.



Anti-lock Braking System (ABS)
ABS helps drivers maintain steering control of a vehicle during hard emergency braking by reducing wheel lock-up.



Anti-Slip Regulation (ASR)
Reduces wheel spin under acceleration, by reducing the torque output of the engine.



Crash-optimized front end
Designed to sacrifice the front of the vehicle in the event of a serious crash. The engine bay and structure of the car crumple in a pre-determined way to help keep the integrity of the cabin intact.

Electromechanical Power Steering System
The Golf's steering has electronically variable power assist, which makes parking easier and highway driving more stable. Also, since it doesn't use steering fluid, it's a completely sustainable solution and contributes to better fuel economy. We're big fans of win-wins.

*Airbags are supplemental restraints only and will not deploy under all accident scenarios. Always use safety belts and seat children only in the rear seats, using restraint systems appropriate for their size and age. Drivers should always exercise care and control, and drive according to weather and road conditions. Obey all traffic laws.



European model shown.

Accessories.

How do you make a car as unique as the new Golf even more unique? Personalize it to fit your unique lifestyle. There's a huge range of quality accessories designed specifically for your new Golf—whether it's a Wagon, GTI or the 2009 World Car of the Year. So if you get your kicks surfing big waves, skiing moguls or shooting the rapids, then there's a roof rack specifically designed to get your equipment there in style. If your playground is more of the asphalt variety, then we've got body kits, aluminum manual pedal covers and a 6-speed shift knob to pump up your playtime, while sunshades, luggage nets and trunk organizers cover your practical side.

Barracuda Bike Holder

Add some wheels to your wheels. This rugged and durable bike holder makes securing and releasing your bicycle easy for you.

Ski/Snowboard Rack

Enjoy your day at the hills. This easy-to-install rack holds up to 2 snowboards or 4 pairs of skis. And a whole lot of snow-filled memories.

Monster Mats

Über-tough floor mats to keep out the mucky, the yucky, and everything in between.

Splash Guards

It's messy under there. Rainwater, gravel, sand and salt—whatever your wheels splash up, your underbody is protected. Just think of them as underbodyguards.



Barracuda Bike Holder



Vision V
18" alloy wheels



Goal
18" alloy wheels



Karthoum
17" alloy wheels

From 1974 to the 2009 World Car of the Year.

Since its introduction to Canada in 1974, the Volkswagen Golf has been driven billions of kilometres by millions of people around the world. That's countless journeys to work. Millions of trips to the beach. And now, one very important drive to the top of the podium.

The new Golf is much more than the 2009 World Car of the Year. It's the culmination of 35 years of German-engineered perfection. It's the quietest Golf ever. The most technologically advanced. With more models and more engines to choose from than ever before, it's most likely the car you're looking for.



Colour combinations Golf and Golf Wagon



Candy White



Amaryllis Red Metallic*



Shark Blue Metallic*



Reflex Silver Metallic



United Grey Metallic*



Platinum Grey Metallic**



Deep Black Pearl



Blue Graphite Pearl

Golf 3-door and 5-door Trendline (2.5L) and Golf 5-door Comfortline (2.5L or 2.0 TDI Clean Diesel)	Scout/Merlin Cloth Titan Black
Candy White	●
Amaryllis Red Metallic	●
Shark Blue Metallic	●
Reflex Silver Metallic	●
United Grey Metallic	●
Deep Black Pearl	●
Blue Graphite Pearl	●

Golf 3-door Sportline (2.5L)	Me 2 Cloth Titan Black
Candy White	●
Amaryllis Red Metallic	●
Shark Blue Metallic	●
Reflex Silver Metallic	●
United Grey Metallic	●
Deep Black Pearl	●
Blue Graphite Pearl	●

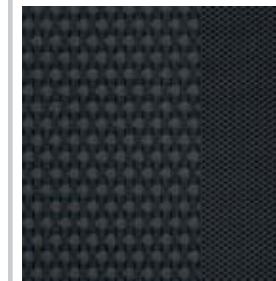
Golf 5-door Highline (2.5L or 2.0 TDI Clean Diesel)	Vienna Leather Titan Black
Candy White	●
Amaryllis Red Metallic	●
Shark Blue Metallic	●
Reflex Silver Metallic	●
United Grey Metallic	●
Deep Black Pearl	●
Blue Graphite Pearl	●

Golf Wagon Trendline (2.5L) and Comfortline (2.5L or 2.0 TDI Clean Diesel)	Scout/Merlin Cloth Titan Black
Candy White	●
Reflex Silver Metallic	●
Platinum Grey Metallic	●
Deep Black Pearl	●
Blue Graphite Pearl	●

Golf Wagon Highline (2.0 TDI Clean Diesel)	Vienna Leather Titan Black
Candy White	●
Reflex Silver Metallic	●
Platinum Grey Metallic	●
Deep Black Pearl	●
Blue Graphite Pearl	●

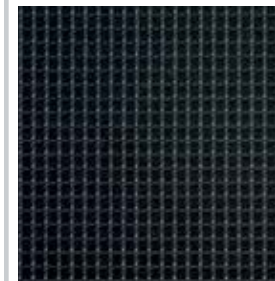
Trendline and Comfortline

Scout/Merlin Cloth Titan Black



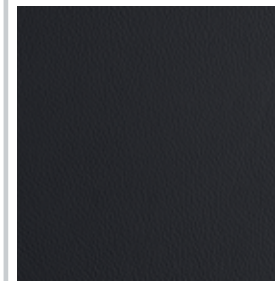
Sportline

Me 2 Cloth Titan Black



Highline

Vienna Leather Titan Black



Golf 3-door and 5-door Trendline

15" steel wheels



Golf Wagon Trendline

16" steel wheels



Golf 3-door Sportline

Porto 17" alloy wheels



Golf 5-door Comfortline and Highline

Cleveland 16" alloy wheels



Golf Wagon Comfortline and Highline

Atlanta 16" alloy wheels



*Only available in 3-door and 5-door.
**Only available in Wagon.

Colour combinations Golf GTI



Candy White



Tornado Red



Carbon Steel Metallic


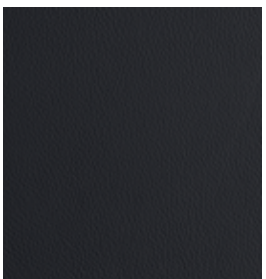


Deep Black Pearl





Golf GTI	Jacky Cloth Sport Seats	Vienna Leather Titan Black Top Sport Seats*
Candy White	●	●
Tornado Red	●	●
Carbon Steel Metallic	●	●
Deep Black Pearl	●	●

Golf GTI

<p>Jacky Cloth Sport Seats</p> 	<p>Vienna Leather Titan Black Top Sport Seats*</p> 
---	---

*Available with the Luxury Leather Package.

Golf GTI

<p>Denver 17" alloy wheels</p> 	<p>Detroit 18" alloy wheels (optional)</p> 
---	---

Specs



Golf and Golf Wagon

TECHNICAL

Engine	3-door, 5-door, Wagon 2.5L		5-door and Wagon 2.0 TDI Clean Diesel			
Type	2.5L, 5-cylinder, in-line, 20-valve		2.0L, 4-cylinder, in-line, turbocharged direct injection, common rail			
Bore	82.5 mm		81.0 mm			
Stroke	92.8 mm		95.5 mm			
Displacement	2,480 cm ³		1,968 cm ³			
Compression ratio	10.0:1		16.5:1			
Horsepower (SAE), hp @ rpm	170 @ 5,700 (125 kW @ 5,700 rpm)		140 @ 4,000 (103 kW @ 4,000 rpm)			
Maximum torque, lb-ft @ rpm	177 @ 4,250 (240 Nm @ 4,250 rpm)		236 @ 1,750–2,500 (320 Nm @ 1,750–2,500 rpm)			
Fuel requirement	Regular unleaded		Ultra low sulfur diesel			
Drivetrain	Front-wheel drive		Front-wheel drive			
Interior Volume – SAE	3-door		5-door		Wagon	
Seating capacity	5		5		5	
Passenger volume	2.65 m ³		2.63 m ³		2.60 m ³	
Cargo volume	0.42 m ³		0.41 m ³		0.93 m ³	
Cargo volume with rear seat folded	–		–		1.89 m ³	
	Front	Rear	Front	Rear	Front	Rear
Volume	1.45 m ³	1.20 m ³	1.45 m ³	1.18 m ³	1.42 m ³	1.18 m ³
Head room	998 mm	979 mm	998 mm	979 mm	976 mm	969 mm
Shoulder room	1,385 mm	1,362 mm	1,389 mm	1,340 mm	1,391 mm	1,348 mm
Leg room	1,046 mm	901 mm	1,046 mm	901 mm	1,045 mm	901 mm

TECHNICAL (cont'd)

Dimensions	3-door		5-door		Wagon			
Wheelbase	2,578 mm		2,578 mm		2,578 mm			
Front track	1,541 mm		1,541 mm		1,541 mm			
Rear track	1,514 mm		1,514 mm		1,514 mm			
Length	4,201 mm		4,201 mm		4,556 mm			
Width	1,779 mm		1,786 mm		1,781 mm			
Height	1,480 mm		1,480 mm		1,504 mm			
Ground clearance	138 mm		138 mm		138 mm			
	3-door and 5-door 2.5L		5-door 2.0 TDI Clean Diesel		Wagon 2.5L		Wagon 2.0 TDI Clean Diesel	
Weights	Manual	Automatic	Manual	Automatic DSG	Manual	Automatic	Manual	Automatic DSG
Curb weight	1,346 kg	1,371 kg	1,358 kg	1,379 kg	1,464 kg	1,490 kg	1,484 kg	1,511 kg
Fuel consumption*	Manual	Automatic	Manual	Automatic DSG	Manual	Automatic	Manual	Automatic DSG
City (L/100 km)	10.4	9.2	6.7	6.7	10.4	9.3	6.7	6.7
Highway (L/100 km)	7.0	6.9	4.7	4.6	7.0	6.9	4.7	4.6

Golf

	Golf 3-door		Golf 5-door		
	Trendline	Sportline	Trendline	Comfortline	Highline
Brakes	Anti-lock Braking System (ABS)				
	S	S	S	S	S
	Power-assisted front vented disc brakes, rear solid disc brakes				
	S	S	S	S	S
	Electronic Brake-pressure Distribution (EBD)				
Suspension	Independent front McPherson struts with stabilizer bar				
	S	S	S	S	S
	Rear fully independent four-link suspension with coil springs, telescopic shock absorbers and stabilizer bar				
	S	S	S	S	S
	Sport suspension				
	–	S	–	–	–
Traction Control	Anti-Slip Regulation (ASR)				
	S	S	S	S	S
	Engine Braking Assist (EBA)				
	S	S	S	S	S
	Electronic Differential Lock (EDL)				
	S	S	S	S	S
	Electronic Stabilization Programme (ESP) with Hydraulic Brake Assist (HBA)				
Transmission	5-speed manual transmission				
	S	S	S	S	S
	6-speed manual transmission (available with TDI Clean Diesel)				
	–	–	–	S	S
	6-speed automatic transmission with Tiptronic® and Sport mode				
	O	O	O	O	O
	6-speed automatic Direct Shift Gearbox (DSG®) with Tiptronic and Sport mode (available with TDI Clean Diesel)				
	–	–	–	O	O

Legend: S = Standard / O = Optional / P = Available with package / – = Not available

*Fuel consumption figures are estimates based on the Government of Canada's approved criteria and testing methods. Actual fuel consumption may vary based on driving conditions, driver habits and vehicle's additional equipment.

Golf

EXTERIOR

		Golf 3-door		Golf 5-door		
		Trendline	Sportline	Trendline	Comfortline	Highline
Bumpers	Body-colour bumpers	S	S	S	S	S
Doors	Two doors + hatch	S	S	-	-	-
	Four doors + hatch	-	-	S	S	S
	Body-colour door handles	S	S	S	S	S
Glass	Tinted glass, green	S	S	S	S	S
Grille	Black front grille	S	S	S	S	-
	Black front grille with chrome applications (standard on TDI Clean Diesel)	-	-	-	-	S
Lights, Front/Rear	Dual-reflector halogen headlights with clear, lightweight, chip-resistant polycarbonate lenses	S	S	S	S	S
	Headlights-on warning tone, upon opening of driver's door when ignition key is removed	S	S	S	S	S
	Halogen projector lens foglights, integrated into front bumper	-	S	-	-	S
	Halogen projector lens foglights, integrated into front bumper (available with TDI Clean Diesel)	-	-	-	S	S
	Side turn signal lights integrated into side exterior mirrors	S	S	S	S	S
Mirrors	Body-colour mirror housings	S	S	S	S	S
	Driver and passenger power exterior mirrors, heatable	S	S	S	S	S
Roof	Power glass sunroof with tilt, slide, tinted glass, manual sunshade, pinch protection, and driver's door power lock operated convenience closing and opening feature	-	S	-	O	S
Tires	195/65 R15 H, all-season tires	S	-	S	-	-
	205/55 R16 H, all-season tires	-	-	-	S	S
	225/45 R17 H, all-season tires	-	S	-	-	-
	195/65 R15 H, steel spare wheel	S	-	S	S	S
	205/55 R16 H, steel spare wheel	-	S	-	-	-
Wheels	6.5J x 15" steel wheels with full wheel covers	S	-	S	-	-
	6.5J x 16" alloy wheels + anti-theft locks	-	-	-	S	S
	7J x 17" alloy wheels + anti-theft locks	-	S	-	-	-
Wipers/Washer	Windshield wipers with variable intermittent wipe feature	S	S	S	S	S
	Heated windshield washer nozzles, front	P	S	P	S	S
	Rear wiper with intermittent wipe feature	S	S	S	S	S

Legend: S = Standard / O = Optional / P = Available with package / - = Not available

Golf

INTERIOR

		Golf 3-door		Golf 5-door		
		Trendline	Sportline	Trendline	Comfortline	Highline
Air Conditioning	Climatic™ manual climate control	S	S	S	S	S
Alarm / Anti-theft	Anti-theft vehicle alarm system for doors, hood, hatch, radio, and starter, with warning LED in driver's door top sill and with audible and visual activation	S	S	S	S	S
	Immobilizer IV theft deterrent system	S	S	S	S	S
Armrest	Adjustable/folding front centre armrest with storage compartment	S	S	S	S	S
	Adjustable/folding rear centre armrest	S	S	S	S	S
Compass	Digital compass	-	-	-	P	S
Cruise Control	Cruise control with active display	S	S	S	S	S
Floor Mats	Front and rear floor mats	-	S	-	S	S
Instrument Cluster	Speedometer, tachometer, odometer, trip odometer, coolant temperature gauge, fuel gauge, gear indicator (if equipped with optional automatic transmission), brake wear indicator, exterior temperature, warning lights, digital clock	S	S	S	S	S
	Multifunction trip computer with trip time, trip distance, average trip speed, average trip fuel consumption, current fuel consumption, kilometres to empty, radio station display, personalizing functions	-	-	-	P	S
	Illumination of controls and gauges	S	S	S	S	S
	Seatbelt reminder and fuel cap seal warning	S	S	S	S	S
Keys	Folding keys (2) with radio-frequency remote transmitter for central locking	S	S	S	S	S
Lighter/Outlets	Two 12V auxiliary power outlets	S	S	S	S	S
Lighting	Dual front and rear reading lights with time delay	S	S	S	S	S
	Illuminated glove box	S	S	S	S	S
	Luggage compartment light	S	S	S	S	S
Locks	Central power locking system with key-operated closing feature for sunroof (when equipped), opening & closing feature for power windows and selective unlocking at driver door	S	S	S	S	S
	Front door-mounted lock/unlock switches for central locking system	S	S	-	-	-
	Front and rear door-mounted lock/unlock switches for central locking system	-	-	S	S	S
	Child safety locks on rear doors	-	-	S	S	S
Mirrors	Driver and front passenger visor vanity mirrors, illuminated with cover	S	S	S	S	S
	Mirror control pad with joystick control	S	S	S	S	S
Radio/Audio	AM/FM radio sound system with single CD player, MP3 format readable, and 8 speakers	S	-	S	S	-
	Premium 8 AM/FM radio sound system with 6.5-inch touch screen and in-dash 6-disc CD changer, MP3 format readable, SD card input, 8 speakers, SIRIUS Satellite Radio integrated, and theft-deterrent warning light and coding	-	S	-	P	S
	Auxiliary input jack	S	S	S	S	S
	Media Device Interface (MDI) with MP3 player connectivity	-	-	-	P	S
	SIRIUS Satellite Radio with limited complimentary subscription (3 months)	-	S	-	P	S

Golf

INTERIOR (cont'd)

		Golf 3-door		Golf 5-door		
		Trendline	Sportline	Trendline	Comfortline	Highline
Restraint/Safety Systems	Driver and passenger front and side airbag* supplemental restraint system	S	S	S	S	S
	Side Curtain Protection® head airbags*, front & rear	S	S	S	S	S
	Rear-impact optimized head restraints—front driver & passenger	S	S	S	S	S
	Rear passenger side thorax airbag* supplemental restraint system	–	–	O	O	S
	Front seat safety belt pre-tensioners with load limiters	S	S	S	S	S
	Rear outboard seating safety belt pre-tensioners with load limiters	–	–	O**	O**	S
Seating, Front	LATCH (Lower Anchors and Tethers for CHildren). Child seat lower attachment points and top tethers, rear outboard seating positions	S	S	S	S	S
	Buckle switch (sensor that deploys airbag depending on safety belt use)	S	S	S	S	S
	8-way manually adjustable height and reach front seats with manual recline, adjustable lumbar support, and lockable head restraints	S	S	–	–	–
Seating, Rear	8-way manually adjustable height and reach front seats, power recline (driver's seat), adjustable lumbar support, and lockable head restraints	–	–	S	S	S
	Easy-entry system for easy access to rear seats	S	S	–	–	–
	Heatable front seats	P	S	P	S	S
Special Features	60/40 split-folding rear seat with centre armrest and pass-through	S	S	S	S	S
	Rear seat head restraints, height-adjustable, all seating positions	S	S	S	S	S
Steering Wheel	Turn signal control stalk with lane-change feature (one touch, signals three times)	S	S	S	S	S
	Intelligent crash response system	S	S	S	S	S
	3-spoke steering wheel	S	–	S	–	–
Hatch / Cargo Area	3-spoke leather-wrapped steering wheel	–	S	–	S	–
	3-spoke leather-wrapped multifunction steering wheel	–	–	–	P	S
	Electromechanical speed-sensitive power steering	S	S	S	S	S
	Height-adjustable and telescopic steering column	S	S	S	S	S
	Theft-deterrent steering column	S	S	S	S	S
Windows	Fully carpeted/lined luggage compartment	S	S	S	S	S
	Four tie-down hooks in cargo area	S	S	S	S	S
Windows	Power windows with pinch protection and automatic up/down (one touch, all windows). Window lockout feature on driver door	S	S	S	S	S
	Key opening & closing feature for power windows	S	S	S	S	S

Legend: S = Standard / O = Optional / P = Available with package / – = Not available

*Airbags are supplemental restraints only and will not deploy under all accident scenarios. Always use safety belts and seat children only in the rear seats, using restraint systems appropriate for their size and age.

**In combination with the rear passenger side thorax airbag supplemental restraint system option.

Golf Wagon

TECHNICAL

		Trendline	Comfortline	Highline
Brakes	Anti-lock Braking System (ABS)	S	S	S
	Power-assisted front vented disc brakes, rear solid disc brakes	S	S	S
	Electronic Brake-pressure Distribution (EBD)	S	S	S
Suspension	Independent front McPherson struts with stabilizer bar	S	S	S
	Rear fully independent four-link suspension with coil springs, telescopic shock absorbers and stabilizer bar	S	S	S
Traction Control	Anti-Slip Regulation (ASR)	S	S	S
	Engine Braking Assist (EBA)	S	S	S
	Electronic Differential Lock (EDL)	S	S	S
Transmission	Electronic Stabilization Programme (ESP) with Hydraulic Brake Assist (HBA)	O	S	S
	5-speed manual transmission	S	S	–
	6-speed manual transmission (available with TDI Clean Diesel)	–	S	S
	6-speed automatic transmission with Tiptronic and Sport mode	O	O	–
	6-speed automatic Direct Shift Gearbox (DSG) with Tiptronic and Sport mode (available with TDI Clean Diesel)	–	O	O

EXTERIOR

Bumpers	Body-colour bumpers with matching front and rear valance	S	S	S
Doors	Four doors + tailgate	S	S	S
	Body-colour door handles	S	S	S
Glass	Tinted glass, green	S	S	S
Grille	Black front grille	S	–	–
	Black front grille with chrome applications	–	S	S
Lights, Front/Rear	Dual-reflector halogen headlamps with clear, lightweight, chip-resistant polycarbonate lenses	S	S	S
	Headlights-on warning tone, upon opening of driver's door when ignition key is removed	S	S	S
	Halogen projector lens foglights, integrated into front bumper (available with TDI Clean Diesel)	–	S	S
	Side turn signal lights integrated into side exterior mirrors	S	S	S

Golf Wagon

EXTERIOR (cont'd)

		Trendline	Comfortline	Highline
Mirrors	Body-colour mirror housings	S	S	S
	Driver and passenger power exterior mirrors, heatable	S	S	S
Roof	Power glass Panoramic sunroof with tilt, slide, tinted glass, power sunshade, pinch protection, and driver's door power lock operated convenience closing and opening feature	–	O	S
	Roof rails, black	S	S	S
Rear Spoiler	Aerodynamic rear spoiler integrated into tailgate	S	S	S
Tires	205/55 R16 H, all-season tires	S	S	S
	195/65 R15 H, steel spare wheel	S	S	S
Wheels	6.5J × 16" steel wheels, with full wheel covers	S	–	–
	6.5J × 16" alloy wheels + anti-theft locks	–	S	S
Wipers/Washer	Windshield wipers with variable intermittent wipe feature	S	S	S
	Heated windshield washer nozzles, front	P	S	S
	Rear wiper with intermittent wipe feature	S	S	S

INTERIOR

Air Conditioning	Climatic manual climate control	S	S	S
Alarm/Anti-theft	Anti-theft vehicle alarm system for doors, hood, hatch, radio, and starter, with warning LED in driver's door top sill and with audible and visual activation	S	S	S
	Immobilizer IV theft deterrent system	S	S	S
Armrest	Ajustable/folding front centre armrest with storage compartment	S	S	S
Cruise Control	Cruise control with active display	S	S	S
Compass	Digital compass	–	P	S
Floor Mats	Front and rear floor mats	–	S	S
Instrument Cluster	Speedometer, tachometer, odometer, trip odometer, coolant temperature gauge, fuel gauge, gear indicator (if equipped with optional automatic transmission), brake wear indicator, exterior temperature, warning lights, digital clock	S	S	S
	Multifunction trip computer with trip time, trip distance, average trip speed, average trip fuel consumption, current fuel consumption, kilometres to empty, radio station display, personalizing functions	–	P	S
	Illumination of controls and gauges	S	S	S
	Seatbelt reminder and fuel cap seal warning	S	S	S
Keys	Folding keys (2) with radio-frequency remote transmitter for central locking	S	S	S
Lighter/Outlets	Two 12V auxiliary power outlets	S	S	S

Legend: S = Standard / O = Optional / P = Available with package / – = Not available

Golf Wagon

INTERIOR (cont'd)

		Trendline	Comfortline	Highline
Lighting	Dual front and rear reading lights with time delay	S	S	S
	Illuminated glove box	S	S	S
	Luggage compartment light	S	S	S
Locks	Central power locking system with key-operated closing feature for panoramic sunroof (when equipped), opening & closing feature for power windows and selective unlocking at driver door	S	S	S
	Front and rear door-mounted lock/unlock switches for central locking system	S	S	S
	Child safety locks on rear doors	S	S	S
Mirrors	Driver and front passenger visor vanity mirrors, illuminated with cover	S	S	S
	Mirror control pad with joystick control	S	S	S
Radio/Audio	AM/FM radio sound system with single CD player, MP3 format readable, and 8 speakers	S	S	–
	Premium 8 AM/FM radio sound system with 6.5-inch touch screen and in-dash 6-disc CD changer, MP3 format readable, SD card input, 10 speakers, SIRIUS Satellite Radio integrated, and theft-deterrent warning light and coding	–	P	S
	Auxiliary input jack	S	S	S
	Media Device Interface (MDI) with MP3 player connectivity	–	P	S
	SIRIUS Satellite Radio with limited complimentary subscription (3 months)	–	P	S
Restraint/Safety Systems	Driver and passenger front and side airbag* supplemental restraint system	S	S	S
	Side Curtain Protection head airbags*, front & rear	S	S	S
	Rear passenger side thorax airbag* supplemental restraint system	O**	O**	S
	Rear-impact optimized head restraints—front driver & passenger	S	S	S
	Front seat safety belt pre-tensioners with load limiters	S	S	S
	Rear outboard seating safety belt pre-tensioners with load limiters	O**	O**	S
	LATCH (Lower Anchors and Tethers for CHildren). Child seat lower attachment points and top tethers, rear outboard seating positions	S	S	S
	Buckle switch (sensor that deploys airbag depending on safety belt use)	S	S	S
Seating, Front	8-way manually adjustable height and reach front seats, manual recline with adjustable lumbar support, and lockable head restraints	S	S	–
	8-way manually adjustable height and reach front seats, power recline (driver seat) with adjustable lumbar support, and lockable head restraints	–	–	S
	Heatable front seats	P	S	S
Seating, Rear	60/40 split-folding rear seat with centre armrest and pass-through	S	S	S
	Rear seat head restraints, height-adjustable, all seating positions	S	S	S
Special Features	Turn signal control stalk with lane-change feature (one touch, signals three times)	S	S	S
	Intelligent crash response system	S	S	S

*Airbags are supplemental restraints only and will not deploy under all accident scenarios. Always use safety belts and seat children only in the rear seats, using restraint systems appropriate for their size and age.

**In combination with the rear passenger side thorax airbag supplemental restraint system option.



Golf Wagon

INTERIOR (cont'd)

		Trendline	Comfortline	Highline
Steering Wheel	3-spoke steering wheel	S	-	-
	3-spoke leather-wrapped steering wheel	-	S	-
	3-spoke leather-wrapped multifunction steering wheel	-	P	S
	Electromechanical speed-sensitive power steering	S	S	S
	Height-adjustable and telescopic steering column	S	S	S
	Theft-deterrent steering column	S	S	S
Hatch / Cargo Area	Fully carpeted/lined luggage compartment	S	S	S
	Four cargo area tie-down hooks	S	S	S
Windows	Power windows with pinch protection and automatic up/down (one touch, all window), window lockout feature on driver door	S	S	S
	Key opening & closing feature for power windows	S	S	S

Legend: S = Standard / O = Optional / P = Available with package / - = Not available

Golf GTI

TECHNICAL

Engine				
Type	2.0L, 4-cylinder, in-line, turbocharged with intercooler and direct injection			
Bore	82.5 mm			
Stroke	92.8 mm			
Displacement	1,984 cm ³			
Compression ratio	9.6:1			
Horsepower (SAE), hp @ rpm	200 @ 5,100–6,000 (147 kW @ 5,100–6,000 rpm)			
Maximum torque, lb-ft @ rpm	207 @ 1,700–5,000 (280Nm @ 1,700–5,000 rpm)			
Fuel requirement	Premium fuel recommended for maximum performance			
Drivetrain				
Front-wheel drive				
Interior Volume – SAE				
	3-door		5-door	
Seating capacity	5		5	
Passenger volume	2.65 m ³		2.63 m ³	
Cargo volume	0.42 m ³		0.41 m ³	
	Front	Rear	Front	Rear
Volume	1.45 m ³	1.20 m ³	1.45 m ³	1.18 m ³
Head room	998 mm	979 mm	998 mm	979 mm
Shoulder room	1,385 mm	1,362 mm	1,389 mm	1,340 mm
Leg room	1,046 mm	901 mm	1,046 mm	901 mm
Dimensions				
	3-door		5-door	
Wheelbase	2,578 mm		2,578 mm	
Front track	1,533 mm		1,533 mm	
Rear track	1,514 mm		1,514 mm	
Length	4,213 mm		4,213 mm	
Width	1,779 mm		1,786 mm	
Height	1,469 mm		1,469 mm	
Ground clearance	128 mm		128 mm	
Weights				
	Manual		Automatic DSG	
Curb weight	1,376 kg		1,397 kg	
Fuel consumption*				
	Manual		Automatic DSG	
City (L/100 km)	10.0		8.7	
Highway (L/100 km)	6.6		6.3	

*Fuel consumption figures are estimates based on the Government of Canada's approved criteria and testing methods. Actual fuel consumption may vary based on driving conditions, driver habits and vehicle's additional equipment.

Golf GTI

TECHNICAL (cont'd)

		3-door	5-door
Brakes	Anti-lock Braking System (ABS)	S	S
	Power-assisted front vented disc brakes, rear solid disc brakes	S	S
	Electronic Brake-pressure Distribution (EBD)	S	S
Suspension	Independent front McPherson struts with stabilizer bar	S	S
	Rear fully independent four-link suspension with coil springs, telescopic shock absorbers and stabilizer bar	S	S
	Sport suspension	S	S
Traction Control	Anti-Slip Regulation (ASR)	S	S
	Engine Braking Assist (EBA)	S	S
	Electronic Differential Lock (EDL)	S	S
	Electronic Transverse Differential Lock (XDS)	S	S
	Electronic Stabilization Programme (ESP) with Hydraulic Brake Assist (HBA)	S	S
Transmission	6-speed manual transmission	S	S
	6-speed automatic Direct Shift Gearbox (DSG) with Tiptronic and Sport mode	O	O

EXTERIOR

Bumpers	Body-colour bumpers	S	S
Doors	Two doors + hatch	S	–
	Four doors + hatch	–	S
	Body-colour door handles	S	S
	Side door sills in plastic with GTI inlays	S	S
Glass	Tinted glass, green	S	S
Grille	Black front grille in honeycomb mesh with red stripping	S	S
Lights, Front/Rear	Bi-Xenon high intensity gas-discharge headlights with auto-leveling, clear, lightweight, chip-resistant polycarbonate lenses	S	S
	Adaptive Front-light System (AFS)—headlight-range adjustment, automatic-dynamic with curve light and turn signal light	S	S
	Headlights-on warning tone, upon opening of driver's door when ignition key is removed	S	S
	Halogen projector lens foglights, integrated into front bumper	S	S
	Side turn signal lights integrated into side exterior mirrors	S	S
Mirrors	Body-colour mirror housings	S	S
	Driver and passenger power exterior mirrors, heatable	S	S
Roof	Power glass sunroof with tilt, slide, tinted glass, manual sunshade, pinch protection, and driver's door power lock operated convenience closing and opening feature	O / P	O / P
Tires	225/45 R17 H, all-season tires	S	S
	225/40 R18 H, all-season tires	O	O
	205/55 R16 H, steel spare wheel	S	S
Wheels	7J × 17" alloy wheels + anti-theft locks	S	S
	7.5J × 18" alloy wheels + anti-theft locks	O	O

Legend: S = Standard / O = Optional / P = Available with package / – = Not available

Golf GTI

EXTERIOR (cont'd)

		3-door	5-door
Wipers/Washer	Windshield wipers with variable intermittent wipe feature	S	S
	Heated windshield washer nozzles, front	S	S
	Rear wiper with intermittent wipe feature	S	S

INTERIOR

Air Conditioning	Climatronic® dual-zone electronic climate control. Driver and passenger side controls for automatic climate control system	S	S
Alarm/Anti-theft	Anti-theft vehicle alarm system for doors, hood, hatch, radio, and starter, with warning LED in driver's door top sill and with audible and visual activation	S	S
	Immobilizer IV theft deterrent system	S	S
Armrest	Adjustable/folding front centre armrest with storage compartment	S	S
	Adjustable/folding rear centre armrest	S	S
Cruise Control	Cruise control with active display	S	S
Compass	Digital compass	S	S
Floor Mats	Front and rear floor mats	S	S
Instrument Cluster	Speedometer, tachometer, odometer, trip odometer, coolant temperature gauge, fuel gauge, gear indicator (if equipped with optional automatic transmission), brake wear indicator, exterior temperature, warning lights, digital clock	S	S
	Multifunction trip computer with trip time, trip distance, average trip speed, average trip fuel consumption, current fuel consumption, kilometres to empty, radio station display, personalizing functions	S	S
	Illumination of controls and gauges	S	S
	Seatbelt reminder and fuel cap seal warning	S	S
Keys	Folding keys (2) with radio-frequency remote transmitter for central locking	S	S
Lighter/Outlets	Two 12V auxiliary power outlets	S	S
Lighting	Dual front and rear reading lights with time delay	S	S
	Footwell lighting, front	S	S
	Illuminated glove box	S	S
	Luggage compartment light	S	S
Locks	Central power locking system with key-operated closing feature for sunroof (when equipped), opening & closing feature for power windows and selective unlocking at driver door	S	S
	Front door-mounted lock/unlock switches for central locking system	S	–
	Front and rear door-mounted lock/unlock switches for central locking system	–	S
	Child safety locks on rear doors	–	S
Mirrors	Dual driver and front passenger visor vanity mirrors, illuminated with cover	S	S
	Mirror control pad with joystick control	S	S
Radio/Audio/Navigation	Premium 8 AM/FM radio sound system with 6.5-inch touch screen and in-dash 6-disc CD changer, MP3 format readable, SD card input, 8 speakers, SIRIUS Satellite Radio integrated, and theft-deterrent warning light and coding	S	S
	Technology Package—Satellite navigation system (DVD-based), 6.5-inch touch screen with SD card input, 30 GB hard drive (10 GB map data, 20 GB music data), SIRIUS Satellite Radio integrated, and Dynaudio® 300-watt digital sound upgrade with 8 speakers	P	P

Golf GTI

INTERIOR (cont'd)

		3-door	5-door
Radio/Audio/Navigation	Auxiliary input jack	S	S
	Media Device Interface (MDI) with MP3 connectivity	P	P
	SIRIUS Satellite Radio with limited complimentary subscription (3 months)	S	S
Restraint/Safety Systems	Driver and passenger front and side airbag* supplemental restraint system	S	S
	Side Curtain Protection head airbags*, front & rear	S	S
	Rear passenger side thorax airbag* supplemental restraint system	–	O
	Rear-impact optimized head restraints—front driver & passenger	S	S
	Front seat safety belt pre-tensioners with load limiters	S	S
	Rear outboard seating safety belt pre-tensioners with load limiters	–	O**
	LATCH (Lower Anchors and Tethers for CHildren). Child seat lower attachment points and top tethers, rear outboard seating positions	S	S
	Buckle switch (sensor that deploys airbag depending on safety belt use)	S	S
Seating, Front	8-way manually adjustable height and reach front sport seats with adjustable lumbar support, and lockable head restraints	S	–
	8-way manually adjustable height and reach top front sport seats with power adjustable lumbar support, and lockable head restraints	P	–
	8-way partial power (power recline) adjustable height and reach front sport seats with adjustable lumbar support, and lockable head restraints	–	S
	8-way partial power (power recline) adjustable height and reach top front sport seats with adjustable lumbar support, and lockable head restraints	–	P
	Easy-entry system for easy access to rear seats	S	–
	Heatable front seats	S	S
Seating, Rear	60/40 split-folding rear seat with centre armrest and pass-through	S	S
	Rear seat head restraints, height-adjustable, all seating positions	S	S
Special Features	Turn signal control stalk with lane-change feature (one touch, signals three times)	S	S
	Intelligent crash response system	S	S
Steering Wheel	3-spoke sport leather-wrapped GTI multifunction steering wheel (available with DSG paddle shifters)	S	S
	Electromechanical speed-sensitive power steering	S	S
	Height-adjustable and telescopic steering column	S	S
	Theft-deterrent steering column	S	S
Hatch / Cargo Area	Fully carpeted/lined luggage compartment	S	S
	Four tie-down hooks in cargo area	S	S
Windows	Power windows with pinch protection and automatic up/down (one touch, all windows). Window lockout feature on driver door	S	S
	Key opening & closing feature for power windows	S	S

Legend: S = Standard / O = Optional / P = Available with package / – = Not available

*Airbags are supplemental restraints only and will not deploy under all accident scenarios. Always use safety belts and seat children only in the rear seats, using restraint systems appropriate for their size and age.

**In combination with the rear passenger side thorax airbag supplemental restraint system option.



Warranty and Roadside assistance

- 4-year/80,000 km (whichever occurs first) new vehicle limited warranty
- 5-year/100,000 km (whichever occurs first) powertrain limited warranty
- 12-year/unlimited distance limited warranty against corrosion perforation
- 4-year/80,000 km (whichever occurs first) 24-hour roadside assistance, provided by Sykes Assistance Services Corporation

Volkswagen Finance

Once you figure out what car to get, Volkswagen Finance will help you get into it. For some people, the hardest thing to decide on when buying a new car isn't colour. Or figuring out which options they just can't live without. It's financing. That's why the folks at Volkswagen Finance are there to help. Go to vw.ca for more information. The choice is yours.



VW.ca

© 2009 Volkswagen Canada. Printed in Canada. Volkswagen Canada believes the information and specifications in this brochure to be correct at the time of printing. Items, specifications, availability, standard features, options, fabrics, and colours are subject to change without notice. Volkswagen Canada is not responsible for errors in typography or photography. Some features may be unavailable when your vehicle is built. Some vehicles are pictured with options that may be available at extra cost or may not be available on some models. Ask your dealer about availability of options and verify that the vehicle you requested includes the equipment you ordered. Tires are supplied and warranted by their manufacturer. The vehicle is sold equipped with four all-season tires. However, please remember that the use of winter tires may be mandatory in your province or territory. Make sure your vehicle has the proper tires at all times. Fuel consumption figures are estimates based on the Government of Canada's approved criteria and testing methods. Your fuel consumption may vary. Airbags are supplemental restraints only and will not deploy under all accident scenarios. Always use safety belts and seat children only in the rear seats, using restraint systems appropriate for their size and age. "Volkswagen", the Volkswagen logo, "Climatronic", "DSG", "GTI", "Golf", "Highline", "Sportline", "TDI" and "TSI" are registered trademarks of Volkswagen AG. "BlueMotion", "Climatic", "Das Auto & Design" and "TDI Clean Diesel" are trademarks of Volkswagen AG. "Comfortline", "Side Curtain Protection" and "Trendline" are registered trademarks of Volkswagen Group Canada Inc. "Monster Mats" is a trademark of Volkswagen Group Canada Inc. The *Bluetooth* word mark and logos are registered trademarks of Bluetooth SIG, Inc. "Dynaudio" is a registered trademark of Dynaudio Holding A/S. "FSI" is a registered trademark of Audi AG. "SIRIUS", "SIRIUS Satellite Radio" and the dog logo are registered trademarks of Sirius XM Radio Inc. and are used under license. "Tiptronic" is a registered trademark of Dr. Ing. h.c. F. Porsche AG. For further information regarding any Volkswagen model, please call 1-800 DRIVE VW or just look us up at vw.ca. Before we sign off, drive responsibly and obey the rules of the road.