

# Golf

## 2012



Das Auto.





## **Form meets function. Fun ensues.**

Available in nimble 3-door and handy 5-door models, the 2012 Golf is designed to drive you happy. But that's only if German-engineered responsive performance is something you enjoy. Or if available sport leather seats and sport suspension sound appealing. Both practical and pleasurable, the 2012 Golf doesn't just get you there, it also takes you away.

## The open road. Now open.

Award-earning and head-turning. Not to mention rubber-burning. The 2012 Golf is fully capable of handling whatever you throw at it. Its convenient pass-through can even accommodate longer items. And the available Premium 8 touch-screen sound system can rock your hottest tunes. On the road since 1974, the Volkswagen Golf has seen many things. And with you behind the wheel, it'll be sure to see many more.



## Key Features

### Features



#### Premium 8 touch-screen radio\*

So much fun right at your fingertips – literally. This touch-screen unit, with 6-disc CD changer, gives you all the music you could possibly want, in one sleek, powerful package.



#### 17" alloy wheels\*

Cast your eyes on the 17" alloy wheels with all-season tires. Careful, though – you might not be able to look away.



#### Media Device Interface (MDI) with iPod® connectivity\*

Take all of your tunes with you. Just plug in the MDI with iPod® adapter to easily access all of your music via the in-dash touch screen.



#### 60/40 split-folding rear seats with centre armrest and pass-through

The functional 60/40 folding seats and the rear-centre armrest with pass-through allow you to fit even larger items in an already large hatchback.



#### Heatable front seats and washer nozzles

Enjoy the comfort of a heatable seat on a chilly day. Not to mention the comfort of knowing you can clean your windshield no matter what it's like outside.



#### Climatronic® dual-zone electronic climate control\*

Create a climate that's perfectly tailored to your needs, whether you're the driver or the passenger. Now that's what we call taming the elements.

### More Features

#### Available RNS 315 navigation system

This rarely-seen-in-this-class feature will get you wherever you're going and back home again, without a single "I think it's a left?"

#### Bluetooth® mobile phone connectivity with voice activation\*

Say hello to hands-free freedom. Bluetooth® with voice command gives you seamless phonebook access, music streaming and, of course, voice calling.

#### Sport suspension\*

Enjoy the road even more with tighter suspension that provides better dynamics and increased agility.

\*Feature is available on higher trimlines only.



## Specs

### Exteriors



Candy White



Amaryllis Red Metallic



Reflex Silver Metallic



Shark Blue Metallic



United Grey Metallic

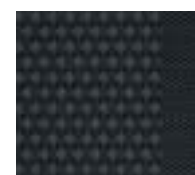


Blue Graphite Pearl

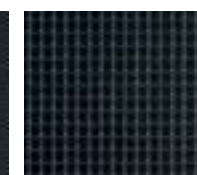


Deep Black Pearl

### Interiors



Titan Black Scout/Merlin cloth TL and CL



Titan Black Me 2 cloth SL



Titan Black Vienna leather HL

### Wheels



15" wheel with all-season tire TL



16" Pescara alloy wheel CL



17" Orlando alloy wheel SL

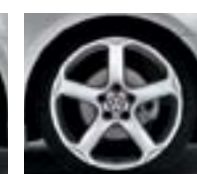


17" Porto alloy wheel HL

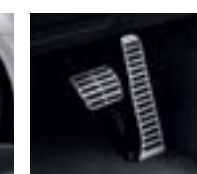
### Accessories



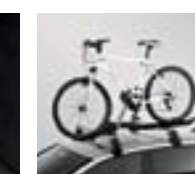
17" Exis alloy wheel, Silver



17" Karthoum alloy wheel, Titanium



Aluminum pedal covers



Barracuda bike holder



Ski and snowboard rack



Transboard



Accessory wheels shown.

## Specifications

### Trendline

#### Engines:

- 3-Door 2.5L 170 hp, 5-speed manual transmission
- 3-Door 2.5L 170 hp, 6-speed automatic transmission with Tiptronic®
- 5-Door 2.5L 170 hp, 5-speed manual transmission
- 5-Door 2.5L 170 hp, 6-speed automatic transmission with Tiptronic®

#### Trendline includes:

- 15" wheels with all-season tires
- 60/40 split-folding rear seats with centre armrest and pass-through
- 8-way manually adjustable front seats with lumbar support and easy entry (3-Door)
- 8-way partial power (power recline) adjustable front seats with lumbar support (5-Door)
- Auxiliary input
- Cruise control
- Diversity antenna
- Driver and front passenger front and side airbags and front and rear Side Curtain Protection®
- Electronic Stability Control (ESC)
- Front and rear reading lights
- Front centre armrest with storage
- Manual climate control
- Power heatable and adjustable exterior mirrors
- Remote central-locking system

#### Optional Equipment:

- Cold Weather Package
  - Heatable front seats and washer nozzles

### Comfortline

#### Engines:

- 5-Door 2.5L 170 hp, 5-speed manual transmission
- 5-Door 2.5L 170 hp, 6-speed automatic transmission with Tiptronic®
- 5-Door 2.0 TDI 140 hp, 6-speed manual transmission
- 5-Door 2.0 TDI 140 hp, 6-speed automatic DSG with Tiptronic®

#### Comfortline includes Trendline plus:

- 16" Pescara alloy wheels with anti-theft locks and all-season tires
- Engine block heater and front fog lights (available with TDI Clean Diesel models)
- Front and rear floor mats
- Heatable front seats and washer nozzles
- Leather-wrapped steering wheel, shift knob and handbrake lever

#### Optional Equipment:

- Power sunroof
- Multimedia Package
  - Bluetooth® mobile phone connectivity with voice activation
  - Digital compass
  - Media Device Interface (MDI) with iPod® connectivity
  - Multifunction steering wheel plus trip computer and indicator
  - Premium 8 radio – touch screen with 6-disc CD changer
  - SIRIUS® Satellite Radio integrated

### Sportline

#### Engines:

- 3-Door 2.5L 170 hp, 5-speed manual transmission
- 3-Door 2.5L 170 hp, 6-speed automatic transmission with Tiptronic®
- 5-Door 2.5L 170 hp, 5-speed manual transmission
- 5-Door 2.5L 170 hp, 6-speed automatic transmission with Tiptronic®

#### Sportline includes Trendline plus:

- 17" Orlando alloy wheels with anti-theft locks and all-season tires
- Front and rear floor mats
- Front fog lights
- Heatable front seats and washer nozzles
- Leather-wrapped steering wheel, shift knob and handbrake lever
- Power sunroof
- Premium 8 radio – touch screen with 6-disc CD changer and 8 speakers
- SIRIUS® Satellite Radio integrated

- Sport seats
- Sport suspension

#### Optional Equipment:

- Connectivity Package
  - Bluetooth® mobile phone connectivity with voice activation
  - Media Device Interface (MDI) with iPod® connectivity
  - Multifunction steering wheel
  - Multifunction trip computer and indicator

### Highline

#### Engines:

- 5-Door 2.5L 170 hp, 5-speed manual transmission
- 5-Door 2.5L 170 hp, 6-speed automatic transmission with Tiptronic®
- 5-Door 2.0 TDI 140 hp, 6-speed manual transmission
- 5-Door 2.0 TDI 140 hp, 6-speed automatic DSG with Tiptronic®

#### Highline includes Comfortline plus:

- 17" Porto alloy wheels with anti-theft locks and all-season tires
- Bluetooth® mobile phone connectivity with voice activation
- Climatronic® dual-zone electronic climate control
- Digital compass
- Front fog lights
- Leather seating surfaces
- Leather-wrapped multifunction steering wheel
- Matte Chrome interior trim
- Media Device Interface (MDI) with iPod® connectivity
- Multifunction trip computer and indicator
- Power sunroof
- Premium 8 radio – touch screen with 6-disc CD changer and 8 speakers
- SIRIUS® Satellite Radio integrated
- Sport seats
- Sport suspension
- Optional Equipment:
  - RNS 315 navigation system

**Think Blue.** It's how we put more thought into what and how you drive.

Fuel Consumption*	Engine	City L/100 km	Highway L/100 km
Golf Manual	2.5L	9.9	6.2
Golf Automatic	2.5L	9.1	6.5
Golf Manual	2.0 TDI	6.7	4.6
Golf Automatic DSG	2.0 TDI	6.7	4.7

\*Fuel consumption figures are estimates based on Natural Resources Canada's approved criteria and testing methods. Your fuel consumption may vary.

**DSG** – A definite shift for the better. DSG stands for Direct Shift Gearbox. In essence, it gives you the convenience of an automatic with the performance and efficiency of a manual. Here's how it works. DSG is managed by dual electronically controlled clutches, so not only do you shift faster, you also get enhanced acceleration and reduced fuel consumption. In fact, thanks to DSG, each shift takes less than 4/100ths of a second.

And if you're the manual type, a quick flip of the Tiptronic® function lets you shift into something a little sportier.

**TDI Clean Diesel** – Simply put, it's the new way of driving diesel. We're very proud of our diesel technology, which reduces emissions to extremely low levels and gives you outstanding fuel economy as well as exhilarating torque. TDI isn't just diesel, it's Clean Diesel.

**Change up early and fill up later.** The earlier you can kick your car into high gear, the more fuel you'll save. After driving a car's length, shift into second. Whenever possible, select the highest gear when cruising along in traffic.

**Driving an automatic? Save fuel by taking your foot briefly off the accelerator, as the transmission will automatically shift to the next highest gear. Just one way that we can all Think Blue.**

**Think Blue.**



VW12GOLFCE



**VW.ca**

© 2011 Volkswagen Canada. Printed in Canada. Items, specifications, availability, standard features, options, fabrics and colours are subject to change without notice. Volkswagen Canada is not responsible for errors in typography or photography. Some features may be unavailable when your vehicle is built or available at extra cost. Although we endeavour to ensure that the information contained in this brochure is accurate, as errors may occur from time to time, customers should contact their local Volkswagen dealer for details. Tires are supplied and warranted by their manufacturer. The vehicle is sold equipped with four all-season tires. However, please remember that the use of winter tires may be mandatory in your province or territory. Fuel consumption figures are estimates based on Natural Resources Canada's approved criteria and testing methods. Refer to the EnerGuide 2012 for Natural Resources Canada's estimated fuel consumption figures. Actual fuel consumption may vary based on driving conditions, driver habits and vehicle's additional equipment. Airbags are supplemental restraints only and will not deploy under all accident scenarios. Always use safety belts and seat children only in the rear seats, using restraint systems appropriate for their size and age. The navigation system depends upon signals from the GPS network and is designed to provide you with suggested routes only. Changes in street names, construction zones, traffic flow, points of interest or other road system changes are beyond the control of Volkswagen Canada. Discrepancies may occur between the mapping and the actual location. Please rely on your individual judgment in determining whether or not to follow a suggested navigation route. "Climatronic", "Comfortline", "DSG", "Golf", "Highline", "Sportline", "TDI", "TDI Clean Diesel", "Trendline", "TSI", "Volkswagen" and the Volkswagen logo are registered trademarks of Volkswagen AG. "Das Auto & Design" and "Think Blue" are trademarks of Volkswagen AG. "Side Curtain Protection" is a registered trademark of Volkswagen Group Canada Inc. The Bluetooth word mark and logos are registered trademarks of Bluetooth SIG, Inc. "FSI" is a registered trademark of Audi AG. "iPod" is a registered trademark of Apple Inc. "SIRIUS", "SIRIUS Satellite Radio" and the dog logo are registered trademarks of Sirius XM Radio Inc. "Tiptronic" is a registered trademark of Dr. Ing. h.c. F. Porsche AG. For further information regarding any Volkswagen model, please call 1-800 DRIVE VW or just look us up at vw.ca. Before we sign off, drive responsibly and obey the rules of the road.

