

Routan

2012



Das Auto.





A new family favourite.

We all know that a family vehicle needs to be functional. The Routan is most definitely functional. The 3.6L, 283-horsepower V6 engine helps. Same goes for the European-tuned suspension, immaculately designed and finished interior, head-turning good looks and entertaining features like second-row and available third-row 9-inch video screens, wireless headphones and remote control. Whether you're behind its wheel or in its sliding second-row captain's chairs, the Routan makes it easy for everyone to enjoy every single trip you take.

The not-so-mini van.

Don't let its sleek exterior fool you – the Routan has plenty of room in store for you. Just poke your head through either one of the available dual power-sliding doors, and prepare to be impressed. From the standard sliding second-row captain's chairs, to the under-floor storage, to the third-row seats with tailgating function, you'll notice excellent uses of space everywhere. And if you fold everything down, you'll just notice a lot of space (4 m³, in fact) that you can use for whatever you want. The more time you spend with the Routan, the more you start to realize that the name "minivan" just doesn't apply here.



Key Features

Features



3-zone climate control

Every passenger can keep their cool – or their heat – with three individually controlled climate zones.



Available Rear Seat Entertainment (RSE)

Available Rear Seat Entertainment, with 9-inch screen, wireless headsets and remote control, will captivate even the most unruly passengers.



17" alloy wheels

Cast your eyes on the 17" alloy wheels with all-season tires. Careful, though – you might not be able to look away.



Sliding second-row captain's chairs

Your second-row seats move effortlessly when you need more leg room or more storage space.



Keyless entry with start and stop button

Unbelievably convenient – start your car without ever having to take your key out of your pocket.



3.6L 283-horsepower engine with 6-speed automatic transmission

The Routan's 3.6L engine has 283 horsepower and 260 lb-ft of torque.

More Features

European-tuned suspension

When you're behind the wheel of the Routan, its European-tuned suspension may just cause you to forget you're driving a minivan.

Tailgating function*

As much fun as the journey may be, the Routan is also designed to help you enjoy the destination. The third-row seats conveniently turn to face the back so tailgating, camping or just hanging out is that much more comfortable.

Rearview camera

A tiny camera on the back of the Routan helps you see things that are hidden behind you. Like, for instance, someone who can't stop staring at your Routan.



Specs

Exteriors



Calla Lily White



Mercury Silver Metallic



Nocturne Black Metallic

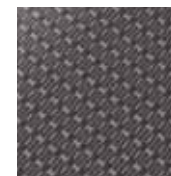


Deep Claret Pearl



Glacial Blue Pearl

Interiors



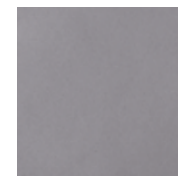
Aero Grey
Aunde cloth
TL



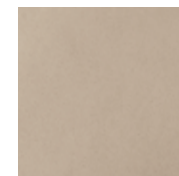
Aero Grey
leatherette
CL



Sierra Stone
leatherette
CL



Aero Grey
Vienna leather
HL



Sierra Stone
Vienna leather
HL

Wheels



16" wheel
TL



17" Mervin
alloy wheel
CL

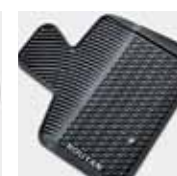


17" Rota
alloy wheel
HL

Accessories



Hitch-mount bike rack



Monster Mats



Roof box carrier



RSE media system
retrofit – twin 9-inch
LCD screens



Running boards

*Seats must face forward while vehicle is in motion.



Specifications

Trendline

- Engine:**
3.6L 283 hp, 6-speed automatic transmission
- Trendline includes:**
16" wheels with all-season tires
4-way manually adjustable front seats
60/40 split-folding rear bench seat with tailgating function (third row)
Cruise control
Driver and front passenger front head, knee (driver) and thorax airbags and side curtain airbags
Dual sliding doors
Electronic Stability Control (ESC)
Engine block heater
Fold-flat sliding captain's chairs (second row)
Front and second-row floor mats
Front overhead console with two reading lights and conversation mirror
Leather-wrapped steering wheel and shift knob
Manual 3-zone climate control
Power heatable and adjustable exterior mirrors
Power vent windows (third row)
Power windows (front and second row)
Privacy glass
Remote central-locking system
Single in-dash CD player with 6 speakers and auxiliary input
Tire Pressure Monitoring System (TPMS)
- Optional Equipment:**
Towing Preparation Package
- Rear Seat Entertainment I (RSE I)
– 9-inch LCD screen (second row)
– In-dash 6-disc CD/DVD player
– Remote control
– Wireless headsets

Comfortline

- Engine:**
3.6L 283 hp, 6-speed automatic transmission
- Comfortline includes Trendline plus:**
17" Mervin alloy wheels with all-season tires
8-way power adjustable driver seat with power lumbar support
Alarm system
Black roof rails
Chrome front grille
Dual power sliding doors
Heatable front-row seating
HomeLink® garage door opener
In-dash 6-disc CD/DVD changer with 6 speakers
Leatherette seating surfaces
Leather-wrapped multifunction steering wheel
Manual sunshades (second and third row)
Multifunction trip computer and indicator
Painted exterior mirror housings and door handles
SIRIUS® Satellite Radio with limited 1-year complimentary subscription
- Optional Equipment:**
Towing Preparation Package
Multimedia Package
– 6.5-inch touch-screen display
– Auto-dimming interior mirror
– In-dash single CD/DVD player with 20 GB hard drive
– Rearview camera
– UConnect™ hands-free phone system
– USB connection
- Rear Seat Entertainment I (RSE I)
– 9-inch LCD screen (second row)
– In-dash 6-disc CD/DVD player
– Remote control
– Wireless headsets
- Multimedia + RSE I Combination Package

Highline

- Engine:**
3.6L 283 hp, 6-speed automatic transmission
- Highline includes Comfortline plus:**
17" Rota alloy wheels with all-season tires
Auto-dimming interior mirror
Automatic 3-zone climate control
Automatic headlights with "coming home" and "leaving home" functions
Front fog lights
Heatable second-row seating
In-dash single CD/DVD player, 6.5-inch touch screen with 20 GB hard drive
Keyless access with start and stop button
Leather seating surfaces
Power adjustable floor pedals
Power sunroof
Power tailgate with tail lights
Rain sensor
Rear overhead storage compartments
Rear Seat Entertainment II (RSE II) – twin second-row and third-row 9-inch LCD screens, wireless headsets and remote control
Rearview camera
Remote start
Removable front centre floor console
UConnect™ hands-free phone system
USB connection
- Optional Equipment:**
Towing Preparation Package
Navigation Package
– Satellite navigation system – touch screen with 30 GB hard drive

Think Blue. It's how we put more thought into what and how you drive.

Fuel Consumption*	Engine	City L/100 km	Highway L/100 km
Routan Automatic	3.6L	12.2	7.9

* Fuel consumption figures are estimates based on Natural Resources Canada's approved criteria and testing methods. Your fuel consumption may vary.

Comfort high, fuel consumption low. Air conditioning and other auxiliaries add comfort, but rapidly consume fuel. So when the weather is nice, open your windows for some fresh air and let the heat escape. In the winter, turn off your seat heaters once warm and your defrosters once clear. Just a few ways that we can all Think Blue.

Think Blue.



VW12ROUTANCE



VW.CA

© 2011 Volkswagen Canada. Printed in Canada. Items, specifications, availability, standard features, options, fabrics and colours are subject to change without notice. Volkswagen Canada is not responsible for errors in typography or photography. Some features may be unavailable when your vehicle is built or available at extra cost. Although we endeavour to ensure that the information contained in this brochure is accurate, as errors may occur from time to time, customers should contact their local Volkswagen dealer for details. Tires are supplied and warranted by their manufacturer. The vehicle is sold equipped with four all-season tires. However, please remember that the use of winter tires may be mandatory in your province or territory. Fuel consumption figures are estimates based on Natural Resources Canada's approved criteria and testing methods. Refer to the EnerGuide 2012 for Natural Resources Canada's estimated fuel consumption figures. Actual fuel consumption may vary based on driving conditions, driver habits and vehicle's additional equipment. Airbags are supplemental restraints only and will not deploy under all accident scenarios. Always use safety belts and seat children only in the rear seats, using restraint systems appropriate for their size and age. The navigation system depends upon signals from the GPS network and is designed to provide you with suggested routes only. Changes in street names, construction zones, traffic flow, points of interest or other road system changes are beyond the control of Volkswagen Canada. Discrepancies may occur between the mapping and the actual location. Please rely on your individual judgment in determining whether or not to follow a suggested navigation route. "Comfortline", "Highline", "Trendline", "Volkswagen" and the Volkswagen logo are registered trademarks of Volkswagen AG. "Das Auto & Design" and "Think Blue" are trademarks of Volkswagen AG. "Routan" is a registered trademark of Volkswagen Group Canada Inc. "HomeLink" is a registered trademark of Johnson Controls Technology Company. "SIRIUS", "SIRIUS Satellite Radio" and the dog logo are registered trademarks of Sirius XM Radio Inc. and are used under license. "UConnect" is a trademark of Chrysler Group LLC. For further information regarding any Volkswagen model, please call 1-800 DRIVE VW or just look us up at vw.ca. Before we sign off, drive responsibly and obey the rules of the road.

