

2014 Highlander



Designed for Adventure.

Bold, powerful, capable.

The all-new 2014 Highlander has been created with a specific type of driver in mind. One who needs to see a beautiful landscape or city skyline to believe it, and secretly hopes to get a little lost along the way. These drivers – the ones who make new discoveries every day – have inspired us to make it our most capable and impressive Highlander yet.

No matter where you're off to, Highlander is equipped for just about anything. Stay connected and add convenience to your drive with a multitude of advanced features. There's room to

keep up to eight passengers comfortable, and the versatility you need for all kinds of cargo. Its redefined interior styling offers a sleek and premium feel that is impressive every time you step inside. It boasts the strength and power you expect from a high-performing SUV, while still achieving remarkable fuel efficiency. And because we believe that every part of your adventure should be exciting, we've made Highlander fun to drive, thanks to a new, retuned suspension system.

Toyota's commitment to safety is demonstrated through our innovative Star Safety System™, and our dedication to reliability is proven by the fact that over 85% of Toyotas sold in Canada in the last 20 years are still on the road today*. It's just one more way Highlander takes you to new and intriguing places, without forgetting that every explorer could use some peace of mind.

The all-new 2014 Highlander. Once you see it, you'll want to know more.



Style at every turn.

Elegant details you'll love finding.

SCAN WITH LAYAR
FOR ENHANCED CONTENT



You constantly search for new and exciting things to discover, and we've worked equally hard to discover ways we can improve every detail of the all-new Highlander. It has been refined all over. The bold exterior shows off a sleek streamlined profile, aggressive wide rear stance, and available integrated roof rails that enhance its aerodynamic design. And the beauty doesn't fade once you step inside. A premium interior with sophisticated materials and textures offers elegance that you can see and feel. Every angle of the vehicle counts. That's why we've dedicated our time to making all of them unforgettable.



Highlander LE shown in Blizzard Pearl.



Highlander's redesigned interior not only offers much more space, it's also incredibly comfortable.



We've focused on accents like the large front grille and standout wheel flares that will turn heads a little further.



Highlander Hybrid Limited shown in Nautical Blue Metallic.



This brochure features enhanced and interactive content using the Layar app



Download the free Layar app on your Android or Apple device



Find and scan pages with the Layar logo



Discover enhanced content

Once you scan the page with Layar, you can switch between English and French interactive content

Functional beauty.

Convenience never looked so good.

You'll notice something new and exciting every time you step into the 2014 Highlander. The interior marries function and style with a variety of sleek and sophisticated features that are designed to impress. Premium materials and textures are featured throughout the cabin, including a soft-touch instrument panel, available heated leather steering wheel and available smooth and perforated leather-trim seats. The interior was thoughtfully designed to make sure that every seat offers the utmost comfort, style and convenience.



PANORAMIC MOONROOF
The available panoramic tilt and slide full glass moonroof opens to let you view the sky from both front and back seats.

HEATED AND VENTILATED FRONT SEATS
Driver and front passenger seats offer available heaters and cooling fans. Second-row passengers can also enjoy the comfort of the optional heated captain seats.



COLOUR-CONTRASTED SEAT STITCHING
Highlander features available seat stitching with contrasting colours that create a unique, eye-catching design.

SCAN WITH LAYAR
FOR ENHANCED CONTENT



IN-DASH SHELF
Conveniently access your electronic devices by storing them neatly in the large capacity In-Dash Shelf. For better visibility, it also features available blue-coloured ambient lighting.

Discover with confidence.

Advanced technology that keeps up.

Even those who can do it all appreciate a little help now and again. Highlander offers an array of advanced technology that lets you stay connected, especially when you need it most. Whether it's innovations like the Display Audio System⁴ with available Navigation⁵ that take the guesswork out of getting to where you're going, or handy

features like an available auxiliary outlet on the second-row seats for electronic devices, Highlander has something for everyone. With a host of standard and available technology that is not only convenient but also incredibly easy to use, getting to your destination is half the fun – even for those times when you're still deciding on exactly where you're going.



Highlander Limited AWD shown in Ooh La La Rouge Mica.



ALL AROUND CONVENIENCE
Parents will appreciate the standard Conversation Mirror that lets you see what the kids are up to in the back. For added convenience, activate the available Driver Easy Speak and a hands-free microphone in the overhead console allows the driver's voice to be heard clearly through the rear speakers.

THREE-ZONE AUTOMATIC CLIMATE CONTROL
Highlander comes with available Three-Zone Automatic Climate Control that lets the driver, front passenger and rear seat passengers select individual temperature settings.

DISPLAY AUDIO SYSTEM⁴ WITH NAVIGATION⁵
The new Display Audio System⁴ with available Navigation⁵ offers a seamless way to stay connected. The system features capacitive touch buttons for easy access to the 8-inch touch-screen. It also has advanced features like Bluetooth^{®3} wireless music streaming, and a unique "text-to-voice" feature that converts text messages from your phone into voice messages, which play through the vehicle's speaker system.

MULTI-INFORMATION DISPLAY
The Multi-Information Display provides valuable information on a variety of vehicle functions and systems, including fuel consumption history, average fuel economy, distance to empty, average speed, trip distance, and much more.

BACKUP CAMERA
When reversing, the backup camera shows the area behind your Highlander that's visible to the camera and displays it on the touch-screen of the audio system's display.⁴



Versatility happens anywhere.

Features that adjust to your adventure.

Highlander offers exceptional versatility to adapt to your ever-changing plans. The interior has been redesigned to create more space for both passengers and cargo. The 1-step second-row sliding seat function allows for easier access for third-row seat passengers to enter and exit the vehicle.

The second- and third-row seatbacks also recline so passengers can unwind on those especially long trips. We've even left enough room for a convenient foldable side table on the available second-row captain seats. Wherever your imagination takes you today, Highlander is built ready.



SEATS 7 OR 8

Travelling with a large group shouldn't mean that your comfort is compromised, so we've widened the third-row seats to easily fit three passengers.

ADJUSTABLE POWER LIFTGATE

The available adjustable power liftgate has an innovative height-adjustment memory feature that can be easily set to open to your preferred height. Now, whether you open the liftgate via handle or key fob, it will rise to the desired height every time.

SCAN WITH LAYAR
FOR ENHANCED CONTENT



ROLL-TOP CENTRE CONSOLE

The handy roll-top centre console gives you access to an impressive 24.5 litres of storage space for larger items like a purse or laptop.



Highlander Limited AWD
shown in Ooh La La Rouge
Mica.



AVAILABLE FLIP-UP REAR GLASS HATCH WINDOW

Get easy and convenient access to the items stored higher in your trunk without opening the rear hatchback.

INCREASED CARGO SPACE

The cargo area has been redesigned to provide 34% more cargo space behind the third-row seats. For added room fold down the second- and third-row seats to reveal an impressive 2200 litres of cargo space.



Highlander Hybrid.

Cleaner. Efficient. Powerful.

As the world's first hybrid SUV, the Highlander Hybrid has an impressive and proven track record. With a combined fuel efficiency rating of 6.9 L/100 km (LE), constantly having to search for a pump is a thing of the past. And we didn't have to sacrifice power or performance in the process. It has an impressive 1587 kg (3500 lb.) of towing power and is equipped with electronic On Demand AWD-i. Highlander Hybrid generates as much as 280 total net horsepower⁹, which is more than many gas models on the road today. Highlander Hybrid proves that being friendlier to the environment doesn't mean having to give up the thrill of the drive.



ELECTRONICALLY CONTINUOUSLY VARIABLE TRANSMISSION (ECVT)

Highlander Hybrid comes equipped with ECVT, which delivers instantaneous power by seamlessly selecting the transmission ratio. This creates smoother acceleration for enhanced driving performance.



Highlander Hybrid Limited shown in Blizzard Pearl.

VEHICLE PROXIMITY NOTIFICATION SYSTEM

When travelling below 20 km/h and running solely on electric power, the Vehicle Proximity Notification System emits a series of tones to help alert pedestrians of the vehicle's presence.

SCAN WITH LAYAR
FOR ENHANCED CONTENT



EV OR ECO MODES

Highlander Hybrid offers two different modes for different types of driving. EV mode drives solely on battery power for up to 1.6 km under certain conditions. For more economical operation in normal driving situations, ECO mode modifies throttle response to help reduce fuel consumption.



HYBRID SYSTEM INDICATOR

Located in the instrument gauge panel is the Hybrid System Indicator which provides the driver with a guideline to help optimize fuel efficiency.

Performance and capability

you won't need to go searching for.

The 2014 Highlander is now more rugged and capable than ever before. Mated to this stronger, stiffer body structure is an improved and retuned suspension system with optimized spring rates and shock absorbers. The MacPherson strut suspension up front is paired with a double-wishbone type suspension in the rear, enhancing Highlander's handling, stability, performance, and overall ride quality and comfort. This combined with the impressive fuel efficiency you've come to expect from Toyota makes the long, scenic route even more rewarding.



IMPRESSIVE TOWING

Your experiences should never feel limited. With a towing capacity of up to 1587 kg (3500 lb.) on Highlander Hybrid, and up to 2268 kg (5000 lb.) on Highlander – you'll have more than enough power to pull a camping trailer with ease, or whatever else you may need while you're away.

6-SPEED AUTOMATIC TRANSMISSION

Highlander features a 6-speed Electronically Controlled Automatic Transmission that improves fuel efficiency, while also enhancing acceleration performance. (Not available on Hybrid models).



SCAN WITH LAYAR
FOR ENHANCED CONTENT



AVAILABLE DYNAMIC TORQUE-CONTROL AWD

With the Highlander Dynamic Torque-Control AWD system, engine power is distributed from front-to-rear, giving the driver maximum control on a variety of surfaces. Highlander Hybrid offers Electronic On Demand AWD with intelligence. When additional traction is required, it automatically switches to AWD, utilizing an additional motor to drive the rear wheels.

Highlander Limited AWD shown in Ooh La La Rouge Mica.

Protecting what's important.

The passenger.

The all-new Highlander comes with a long list of safety features including braking and stability control technologies, and 8 standard airbags¹. Whether you're

driving down winding country roads, or navigating through busy streets, you can drive easy knowing that the 2014 Highlander has you covered.

SCAN WITH LAYAR
FOR ENHANCED CONTENT



8 AIRBAGS¹

Highlander comes standard with eight airbags¹, which include dual-stage driver and front passenger airbags, driver's knee airbag, front passenger seat cushion airbag, driver & front passenger seat-mounted side airbags and roll-sensing front & rear head/side curtain airbags.

ANCHOR POINTS FOR CHILD RESTRAINT SEATS

To help keep children safe and secure, Highlander comes equipped with lower anchors on outboard second-row seats and upper tether anchors on all second-row seats and the centre seat of the third-row.

TIRE PRESSURE MONITOR

The standard Tire Pressure Monitor System evaluates the pressure of the tires and issues a warning if the pressure becomes critically low.

LANE DEPARTURE ALERT¹³

The available Lane Departure Alert (LDA)¹³ on Highlander Hybrid uses a camera to monitor visible lane markings, alerting you if you are drifting.

BLIND SPOT MONITOR¹¹ W/REAR CROSS-TRAFFIC ALERT¹²

Highlander comes with an available Blind Spot Monitor (BSM)¹¹ with Rear Cross-Traffic Alert (RCTA)¹², which uses radar technology to help identify vehicles that may not be visible when changing lanes or backing out of a parking space. When a vehicle is detected, a warning indicator illuminates on the appropriate side view mirror.



2014 Highlander and Highlander Hybrid come standard with the Star Safety System™. This integration of active safety features is designed to protect occupants by helping drivers avoid accidents in the first place.

DYNAMIC RADAR CRUISE CONTROL¹⁴/PRE-COLLISION SYSTEM¹⁵
Highlander Hybrid is available with Dynamic Radar Cruise Control¹⁴, which senses a vehicle ahead and automatically adjusts your vehicle speed to allow for a safe and comfortable distance between vehicles. Also available on Highlander Hybrid, the Pre-Collision System (PCS)¹⁵ is designed to help recognize and anticipate unavoidable frontal collisions by automatically applying the brakes and retracting the front seatbelts to help you prepare for such a scenario.



- VSC** **VEHICLE STABILITY CONTROL**
Helps prevent slips and loss of traction by reducing engine power and applying the brake force to the wheels that need it.⁶
- TRAC** **TRACTION CONTROL**
Helps maintain traction on wet, icy, loose or uneven surfaces by applying brake force to the spinning wheel(s).
- ABS** **ANTI-LOCK BRAKE SYSTEM**
Prevents brakes from locking up by "pulsing" brake pressure to each wheel to help you stay in control in emergency braking situations.
- EBD** **ELECTRONIC BRAKE-FORCE DISTRIBUTION**
Redistributes brake force to help keep the rear wheels from locking up during sudden braking situations.
- BA** **BRAKE ASSIST**
Detects sudden or "panic" braking and adds the full pressure needed to help prevent a collision.⁷
- SST** **SMART STOP TECHNOLOGY**
Smart Stop Technology is designed to reduce engine power when the brake is firmly applied helping to bring the vehicle to a stop, even if the accelerator pedal is fully depressed.⁸

Toyota was the first full-line manufacturer to make all of the elements of the Star Safety System™ standard on every new vehicle. Visit toyota.ca for more details.

Highlander Limited AWD shown in Ooh La La Rouge Mica.
Highlander LE AWD shown in Nautical Blue Metallic.

Highlander/Highlander Hybrid Features

INTERIOR	LE	LE AWD	XLE AWD	Limited AWD	LE	XLE	Limited
	Highlander				Highlander Hybrid		

ENTERTAINMENT & CONNECTIVITY	LE	LE AWD	XLE AWD	Limited AWD	LE	XLE	Limited
6.1" Touch Panel Display Audio ⁴ AM/FM/CD Player, MP3/WMA Playback	●	●	-	-	●	-	-
8" Touch Panel Display Audio ⁴ w/Navigation ⁵ , AM/FM/CD Player, MP3/WMA Playback	-	-	●	-	-	●	-
8" Touch Panel Display Audio ⁴ w/Navigation ⁵ , JBL® AM/FM/CD Player, MP3/WMA Playback	-	-	-	●	-	-	●
SiriusXM® Satellite Radio	-	-	●	●	-	●	●
USB Input Port, Auxiliary Input Jack	●	●	●	●	●	●	●
Bluetooth® ³ Hands-Free Phone Connectivity & Wireless Audio Streaming	●	●	●	●	●	●	●
6-Speakers	●	●	●	-	●	●	-
12-Speakers	-	-	-	●	-	-	●
Steering Wheel Bluetooth® ³ & Audio Controls	●	●	●	●	●	●	●
Driver Easy Speak	-	-	●	-	-	●	-
Voice Recognition	●	●	-	-	●	-	-
Advanced Voice Recognition	-	-	●	●	-	●	●
Backup Camera	●	●	●	●	●	●	●
3.5-inch LCD Multi-Information Display	●	●	-	-	●	-	-
4.2-inch LCD Multi-Information Display	-	-	●	●	-	●	●
COMFORT & CONVENIENCE	LE	LE AWD	XLE AWD	Limited AWD	LE	XLE	Limited
Front & Rear Climate Control	●	●	-	-	-	-	-
Tri-Zone Automatic Climate Control	-	-	●	●	●	●	●
Cabin Air Filter	●	●	●	●	●	●	●
Power Door Locks	●	●	●	●	●	●	●
Power Windows w/Driver, Front Passenger Auto Up/Down	●	●	●	-	●	●	-
Power Windows w/Auto Up/Down	-	-	-	●	-	-	●
Dual Illuminated Vanity Mirrors	●	●	●	●	●	●	●
Day/Night Rear View Mirror	●	●	-	-	●	-	-
Auto-Dimming Rear View Mirror	-	-	●	●	-	●	●
3-Spoke, Tilt & Telescopic Steering Wheel w/Cruise Controls	●	●	●	-	●	●	-
3-Spoke, Heated, Tilt & Telescopic Steering Wheel w/Climate & Cruise Controls	-	-	-	●	-	-	●
Leather-Wrapped Steering Wheel & Shift Knob	-	-	●	●	●	●	●
Rear Clearance & Backup Sonars	-	-	-	●	-	-	●
2nd Row Retractable Window Sunshades	-	-	●	●	-	●	●
Push Button Start, Smart Key System	-	-	●	●	●	●	●
Carpet Floor Mats, All-Season Floor Mats	●	●	●	●	●	●	●
Cruise Control	●	●	●	●	●	●	-
Dynamic Radar Cruise Control ¹⁴	-	-	-	-	-	-	●

INTERIOR (cont'd)	LE	LE AWD	XLE AWD	Limited AWD	LE	XLE	Limited
	Highlander				Highlander Hybrid		

Digital Clock	●	●	●	●	●	●	●
Overhead Console w/Sunglass Storage & Map Lamps	●	●	●	●	●	●	●
24.5 Litre Roll-Top Centre Console Box w/Utility Tray	●	●	●	●	●	●	●
Front & Rear Cupholders	●	●	●	●	●	●	●
Front Seat Back Pockets, Door Map Pockets	●	●	●	●	●	●	●
Cargo Area Tie-Down Hooks	●	●	●	●	●	●	●
Under Cargo Area Storage Compartment	●	●	●	●	●	●	●
Cargo Area Lamps	●	●	●	●	●	●	●
Front & 2nd Row Reading Lamps	●	●	●	●	●	●	●
Blue LED Ambient Lighting	-	-	-	●	-	-	●
Keyless Entry w/Hatch Release	●	●	●	●	●	●	●
Integrated Garage Door Opener	-	-	●	●	-	●	●
Accessory Power Outlets	●	●	●	●	●	●	●
SEATING & TRIM	LE	LE AWD	XLE AWD	Limited AWD	LE	XLE	Limited
Front Captain Seats	●	●	●	●	●	●	●
Fabric Trimmed Seats	●	●	-	-	-	-	-
SofTex® & Fabric Trimmed Seats	-	-	-	-	●	-	-
Leather Trimmed Front & 2nd Row Seats	-	-	●	-	-	●	-
Perforated Leather Trimmed Front & 2nd Row Seats	-	-	-	●	-	-	●
SofTex® Trimmed 3rd Row Seats	-	-	●	●	-	●	●
Heated Front Seats	-	-	●	-	●	-	-
Heated & Ventilated Front Seats	-	-	-	●	-	-	●
Driver Seat w/Recline, Cushion Height Adjustments	●	●	-	-	-	-	-
Power 8-Way Adjustable Driver Seat w/Lumbar Support & Variable Cushion Length	-	-	●	●	●	●	●
Driver Seat Memory System	-	-	-	●	-	-	●
Front Passenger Seat w/Recline, Fore/Aft Adjustments	●	●	●	-	●	●	-
Power 4-Way Adjustable Passenger Seat	-	-	-	●	-	-	●
60/40 Split, Flat Folding 2nd Row Bench Seats w/Slide & Recline	●	●	●	-	●	●	-
Heated 2nd Row Captain Seats w/Side Table	-	-	-	●	-	-	●
60/40 Split, Flat Folding 3rd Row Bench Seats w/Recline	●	●	●	●	●	●	●
All-Position Vertically Adjustable Headrests	●	●	●	●	●	●	●

EXTERIOR	LE	LE AWD	XLE AWD	Limited AWD	LE	XLE	Limited
	Highlander				Highlander Hybrid		

Electric Rear Liftgate Defroster w/Timer	●	●	●	●	●	●	●
Adjustable Height Power Liftgate w/Jam Protection	-	-	●	●	●	●	●
Rear Privacy Glass	●	●	●	●	●	●	●
Flip-Up Rear Hatch Glass	-	-	●	●	●	●	●
High Solar Energy Absorbing Window Glass	●	●	●	●	●	●	●
Front & Rear Splash Guards	●	●	●	●	●	●	●
Colour-Keyed Door Handles	●	●	●	●	●	●	●
Silver Painted Roof Rails	-	-	●	-	-	●	-
Chromtec® Roof Rails	-	-	-	●	-	-	●
Roof Rail Cross Bars	-	-	●	●	-	●	●
Power Tilt/Slide Moonroof w/Sunshade	-	-	●	-	-	●	-
Panoramic Glass Roof w/Sunshade	-	-	-	●	-	-	●
Colour-Keyed Rear Spoiler w/LED Stoplamp	●	●	●	●	●	●	●
LE Badging	●	●	-	-	●	-	-
XLE Badging	-	-	●	-	-	●	-
Limited Badging	-	-	-	●	-	-	●
Dual Heated, Power Remote-Control, Foldable Mirrors	●	●	●	●	●	●	●
Integrated Signal Lamps	●	●	●	●	●	●	●
Variable Intermittent Wipers, Intermittent Rear Window Wiper/Washer	●	●	●	●	●	●	●
Windshield Wiper De-Icer	●	●	●	●	●	●	●
Projector Beam Halogen Headlamps	●	●	●	●	●	●	●
Fog Lamps	-	-	●	●	●	●	●
Automatic Headlamp System	●	●	●	●	●	●	●
Rear Bumper Protector	●	●	●	●	●	●	●

SAFETY	LE	LE AWD	XLE AWD	Limited AWD	LE	XLE	Limited
	Highlander				Highlander Hybrid		

STAR SAFETY SYSTEM™ (VSC) ⁶ , Traction Control (TRAC), Anti-lock Brake System (ABS), Electronic Brake-force Distribution (EBD), Brake Assist (BA) ⁷ & Smart Stop Technology (SST) ⁸	●	●	●	●	●	●	●
Dual-Stage Driver & Front Passenger Airbag Supplemental Restraint System (SRS) ¹	●	●	●	●	●	●	●
Driver's Knee Airbag (SRS) ¹	●	●	●	●	●	●	●
Front Passenger Seat Cushion Airbag (SRS) ¹	●	●	●	●	●	●	●
Driver & Front Passenger Seat-Mounted Side Airbags (SRS) ¹	●	●	●	●	●	●	●
Roll-Sensing Front & Rear Head/Side Curtain Airbags (SRS) ¹	●	●	●	●	●	●	●
Front Seatbelt Pre-Tensioners & Force Limiters	●	●	●	●	●	●	●
Front Seatbelt Anchor Height Adjusters	●	●	●	●	●	●	●
All-Position 3-Point Lap & Shoulder Belts	●	●	●	●	●	●	●
Driver & Front Passenger Whiplash-Injury-Lessening (WIL) Seats	●	●	●	●	●	●	●
Anchor Points for Child Restraint Seats	●	●	●	●	●	●	●
Child Protector Rear Door Locks	●	●	●	●	●	●	●
Vehicle Anti-Theft System	-	-	●	●	-	●	●
Blind Spot Monitor (BSM) ¹¹	-	-	-	●	-	-	●
Rear Cross-Traffic Alert (RCTA) ¹²	-	-	-	●	-	-	●
Vehicle Proximity Notification System	-	-	-	-	●	-	●
Lane Departure Alert (LDA) ¹³	-	-	-	-	-	-	●
Pre-Collision System (PCS) ¹⁵ w/Dynamic Radar Cruise Control ¹⁴	-	-	-	-	-	-	●
Engine Immobilizer	●	●	●	●	●	●	●
Low Fuel, Low Washer Fluid, Door Ajar Warning Indicators	●	●	●	●	●	●	●
Tire Pressure Monitoring System	●	●	●	●	●	●	●

Available Packages

Leather Package	-	○	-	-	○	-	-
Leather Trimmed Front & 2nd Row Seats with Leather-Like Vinyl Trimmed 3rd Row Seats							
Convenience Package	○	○	-	-	-	-	-
18" Unique Aluminum Alloy Wheels, Tri-Zone Automatic Climate Control, Heated Front Seats w/Console-Mounted High/Low Temperature Setting, Leather-Wrapped Steering Wheel & Shift Knob, Power 8-Way Adjustable Driver Seat w/Lumbar Support, Adjustable Height Power Liftgate w/Jam Protection, Flip-Up Rear Hatch Glass, Fog Lamps, SofTex® & Fabric Trimmed Seats, SiriusXM® Satellite Radio							

Highlander/Highlander Hybrid Specifications

MECHANICAL	LE	LE AWD	XLE AWD	Limited AWD	LE	XLE	Limited
	Highlander				Highlander Hybrid		

ENGINE

Type	LE	LE AWD	XLE AWD	Limited AWD	LE	XLE	Limited
3.5 Litre, V6, DOHC, 24-Valve, Dual Variable Valve Timing w/intelligence (Dual VVT-i), Sequential Multiport Electronic Fuel Injection	●	●	●	●	-	-	-
3.5 Litre, V6, DOHC, 24-Valve, Variable Valve Timing w/intelligence (VVT-i), Hybrid Synergy Drive (HSD), Sequential Multiport Electronic Fuel Injection	-	-	-	-	●	●	●
Compression Ratio							
10.8:1	●	●	●	●	-	-	-
12.5:1	-	-	-	-	●	●	●
Horsepower							
270 hp @ 6200 rpm	●	●	●	●	-	-	-
Hybrid System Net Power							
Net HP: 280 hp ⁹	-	-	-	-	●	●	●
Torque							
248 lb.ft. @ 4700 rpm	●	●	●	●	-	-	-
Electric Motor							
Permanent Magnet AC Synchronous Motor	-	-	-	-	●	●	●
HV Battery							
Sealed Nickel-Metal Hydride (Ni-MH)	-	-	-	-	●	●	●

MECHANICAL (cont'd)	LE	LE AWD	XLE AWD	Limited AWD	LE	XLE	Limited
	Highlander				Highlander Hybrid		

DRIVETRAIN

Drive Configuration	LE	LE AWD	XLE AWD	Limited AWD	LE	XLE	Limited
Front Engine/Front Wheel Drive, Hill-start Assist Control (HAC)	●	-	-	-	-	-	-
Dynamic Torque Control AWD, Hill-start Assist Control (HAC), Downhill Assist Control (DAC)	-	●	●	●	-	-	-
Electronic On Demand AWD-i, Vehicle Dynamics Integrated Management (VDIM), Hill-start Assist Control (HAC)	-	-	-	-	●	●	●
Transmission							
6-Speed, Automatic, Electronically Controlled Transmission w/intelligence (ECT-i), Sequential Shift Mode	●	●	●	●	-	-	-
Gate-Type Shifter	●	●	●	●	-	-	-
Electronically controlled Continuously Variable Transmission (ECVT) w/ECON Mode & EV Mode, Sequential Shift Mode	-	-	-	-	●	●	●

CHASSIS

Suspension	LE	LE AWD	XLE AWD	Limited AWD	LE	XLE	Limited
Front: Independent, MacPherson Strut w/Stabilizer Bar & Hydraulic Shock Absorbers	●	●	●	●	●	●	●
Rear: Double-Wishbone, Coil Spring Rear Suspension w/Stabilizer Bar, Trailing Arms & Hydraulic Shock Absorbers	●	●	●	●	●	●	●
Brakes							
Power-Assisted, Ventilated Front Discs, Solid Rear Discs	●	●	●	●	●	●	●
Integrated Regenerative Braking System, Electronically Controlled Hydraulic Braking System (ECB2)	-	-	-	-	●	●	●
Steering							
Electric Rack & Pinion w/Variable Power Assist	●	●	●	●	●	●	●
Wheels & Tires							
18" Aluminum Alloy Wheels, Wheel Locks	●	●	-	-	●	-	-
19" Aluminum Alloy Wheels, Wheel Locks	-	-	●	-	-	●	-
19" Chromtec® Alloy Wheels, Wheel Locks	-	-	-	●	-	-	●
P245/60R18, All-Season Radial Tires, P195/90D18 Temporary Spare Tire	●	●	-	-	●	-	-
P245/55R19, All-Season Radial Tires, P195/90D18 Temporary Spare Tire	-	-	●	●	-	●	●

New vehicle warranty summary – No deductibles – no transfer fees

COMPREHENSIVE COVERAGE 3 years or 60,000 km. This warranty includes 24 hour Roadside Assistance and other benefits, as well as coverage of repairs on any part of the vehicle that is defective in material or workmanship under normal use and maintenance. Different warranties apply to original tires.

POWERTRAIN COMPONENTS 5 years or 100,000 km. This warranty covers repairs to powertrain components that are defective in material or workmanship under normal use and maintenance.

MAJOR EMISSION CONTROL COMPONENTS 8 years or 130,000 km. This warranty covers repairs to specified major emission components that are defective in material or workmanship under normal use and maintenance.

CORROSION PERFORATION 5 years/unlimited distance. This warranty covers any sheet metal found, under normal use, to have developed a perforation from corrosion due to defects in material or workmanship.

HYBRID-RELATED COMPONENTS** 8 years or 160,000 km. This warranty covers repairs to hybrid-related components that are defective in material or workmanship under normal use and maintenance.

**Includes: HV Battery, Battery Control Module, Hybrid Control Module and Inverter with Converter.

Toyota Canada Inc. Every effort has been made to ensure the specifications and equipment shown are accurate based on information available at time of printing. In some cases, certain changes in production capacity, standard equipment, options or product delays may occur which would not be reflected in this brochure. Toyota Canada Inc. reserves the right to make these changes without notice or obligation. The Toyota website toyota.ca - or your Toyota Dealer is your best source for up-to-date information.

DIMENSIONS	mm (in.)	LE	LE AWD	XLE AWD	Limited AWD	LE	XLE	Limited
		Highlander				Highlander Hybrid		

Length	4855 (191.1)	●	●	●	●	●	●	●
Width	1925 (75.8)	●	●	●	●	●	●	●
Height (Unloaded)	1730 (68.1)	●	●	-	-	●	-	-
	1780 (70.1)	-	-	●	-	-	●	●
Wheelbase	2790 (109.8)	●	●	●	●	●	●	●
Track	Front: 1635 (64.4)	●	●	●	●	●	●	●
	Rear: 1630 (64.2)	●	●	●	●	●	●	●
Headroom	Front: 1034 (40.7)	●	●	-	-	●	-	-
	2nd Row: 1013 (39.9)	●	●	-	-	●	-	-
	Front: 1003 (39.5) w/Moonroof	-	-	●	-	-	●	-
	2nd Row: 1006 (39.6) w/Moonroof	-	-	●	-	-	●	-
	Front: 1010 (39.8) w/Panoramic Glass Roof	-	-	-	●	-	-	●
	2nd Row: 960 (37.8) w/Panoramic Glass Roof	-	-	-	●	-	-	●
	3rd Row: 913 (35.9)	●	●	●	●	●	●	●
Legroom	Front: 1123 (44.2)	●	●	●	●	●	●	●
	2nd Row: 976 (38.4)	●	●	●	●	●	●	●
	3rd Row: 703 (27.7)	●	●	●	●	-	-	-
	3rd Row: 677 (26.7)	-	-	-	-	●	●	●
Shoulder Room	Front: 1507 (59.3)	●	●	●	●	●	●	●
	2nd Row: 1513 (59.6)	●	●	-	-	●	-	-
	2nd Row: 1499 (59.0)	-	-	●	●	-	●	●
	3rd Row: 1398 (55.0)	●	●	●	●	●	●	●
Turning Circle	m (ft.)							
	11.8 (38.7)	●	●	●	●	●	●	●
Ground Clearance	203 (8.0)	●	●	●	●	●	●	●
Approach Angle (degrees)	18	●	●	●	●	●	●	●
Departure Angle (degrees)	23	●	●	●	●	-	-	-
	24	-	-	-	-	●	●	●

WEIGHT & CAPACITIES		LE	LE AWD	XLE AWD	Limited AWD	LE	XLE	Limited
		Highlander				Highlander Hybrid		

Curb Weight	kg (lb)							
	1925 (4244)	●	-	-	-	-	-	-
	1995 (4398)	-	●	-	-	-	-	-
	2035 (4486)	-	-	●	-	-	-	-
	2045 (4508)	-	-	-	●	-	-	-
	2165 (4773)	-	-	-	-	●	-	-
	2185 (4817)	-	-	-	-	-	●	-
	2200 (4850)	-	-	-	-	-	-	●
Seat Capacity	8	●	●	●	-	●	●	-
	7	-	-	-	●	-	-	●
Cargo Capacity	litres (cu.ft.)							
	2370 (83.7) Behind Front Seats	●	●	-	-	●	-	-
	2356 (83.2) Behind Front Seats	-	-	●	-	-	●	-
	2339 (82.6) Behind Front Seats	-	-	-	●	-	-	●
	1198 (42.3) Behind 2nd Row Seats	●	●	●	-	●	●	-
	1189 (42.0) Behind 2nd Row Seats	-	-	-	●	-	-	●
	390 (13.8) Behind 3rd Row Seats	●	●	●	-	●	●	-
	385 (13.6) Behind 3rd Row Seats	-	-	-	●	-	-	●
Fuel Capacity	litres (gal)							
	72.5 (15.9)	●	●	●	●	-	-	-
	65.0 (14.3)	-	-	-	-	●	●	●
Towing Capacity	kg (lb)							
	2268 (5000)	●	●	●	●	-	-	-
	1587 (3500)	-	-	-	-	●	●	●

FUEL CONSUMPTION RATING²

City/Highway/Combined	L/100 km	mpg (imperial gallon)	LE	LE AWD	XLE AWD	Limited AWD	LE	XLE	Limited
FWD	11.1/7.9/9.6	25/36/29	●	-	-	-	-	-	-
AWD	11.5/8.2/10.0	25/34/28	-	●	●	●	-	-	-
Hybrid	6.7/7.2/6.9	42/39/41	-	-	-	-	●	-	-
Hybrid	6.8/7.2/7.0	42/39/40	-	-	-	-	-	●	●

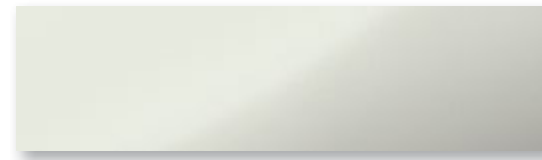
(1) All Toyota vehicles shown in this brochure have Supplemental Restraint Systems (SRS). For important safety information about the Supplemental Restraint System in a particular vehicle, please see the Owner's Manual or contact your local Toyota Dealer. (2) Fuel efficiency estimates were determined using approved Government of Canada Test Methods. Actual fuel consumption will vary based on driving habits and other factors. (3) Toyota tests certain Bluetooth® capable phones for compatibility with Toyota vehicles. Note that the recommendation of Toyota is not a warranty of the performance for any phone and that some problems may occur with any type of handset based on the phone software version or the service coverage available in your area. Some vehicles equipped with Bluetooth® technology are available with bilingual compatibility. Please see your Toyota Dealer for details. (4) Driving while distracted can result in loss of vehicle control. Always drive safely, obey traffic laws and focus on the road and traffic conditions while driving. (5) The Toyota Navigation System is designed to assist in locating an address or point of interest. Discrepancies may be encountered between the system and your actual location. Rely on your common sense to decide whether or not to follow a specified route. Detailed coverage is not available for every city or roadway. Optional periodic geographic updates are available at an additional cost. The Navigational systems in some vehicles are available with bilingual capability. Please see your Navigation System Owner's Manual and your Toyota Dealer for further details. (6) Vehicle Stability Control (VSC) is an electronic system designed to help the driver maintain vehicle control under adverse conditions. It is not a substitute for safe driving practices. Factors including speed, road conditions and driver steering input can all affect whether VSC will be effective in preventing a loss of control. Please see your Owner's Manual for further details. (7) Brake Assist is designed to help the driver take full advantage of the benefits of ABS. It is not a substitute for safe driving practices. Braking effectiveness also depends on proper brake-system maintenance and tire and road conditions. (8) Smart Stop Technology operates only in the event of certain simultaneous brake and gas pedal applications. When engaged, the system will reduce engine power to help the brakes bring the vehicle to a stop. Factors including speed, road conditions, driver input can all impact stopping distance. Smart Stop Technology is not a substitute for safe and attentive driving and does not guarantee instant stopping. Please see your Owner's Manual for further details. (9) The maximum output indicates engine plus HV battery output. (10) Compared against similarly equipped conventional gasoline powered vehicles. Based on North American sales data and Federal Tier 2 engine emission requirements. (11) Do not rely exclusively on the Blind Spot Monitor System to determine if a lane change is safe. Always look over your shoulder and use your turn signal before changing lanes. There are several limitations to the function, detection, range and clarity of the monitor. For a complete list of limitations and directions regarding use of the monitor system, please see your Owner's Manual. (12) Do not rely exclusively on the Rear Cross-Traffic Alert System. There are limitations to the function, detection and range of the system. You should also look around outside your vehicle, over your shoulder and use your mirrors to confirm rearward clearance. For a complete list of limitations and directions, please see your Owner's Manual. (13) Lane Departure Alert is designed to read the lane markers of certain roads. If the vehicle approaches the outer limits of its lane, the system warns the driver that corrective action may be required. It is not a collision-avoidance system and is not a substitute for safe and attentive driving. System effectiveness depends on many factors. Please see your Owner's Manual for further information. (14) Dynamic Radar Cruise Control was designed to assist the driver and is not a substitute for safe and attentive driving practices. (15) The Pre-Collision System is designed to help reduce the crash speed and damage in certain frontal collisions only. It is not a collision-avoidance system and is not a substitute for safe and attentive driving. System effectiveness depends on many factors, such as speed, driver input and road conditions. Please see your Owner's Manual for further information.

Colours

SCAN WITH LAYAR TO VIEW THE COLOUR SELECTOR



EXTERIOR COLOUR OPTIONS



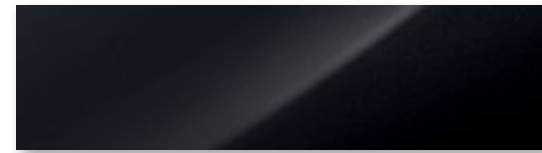
070
Blizzard Pearl



1D6
Silver Sky Metallic



1H1
Pre-Dawn Grey Mica



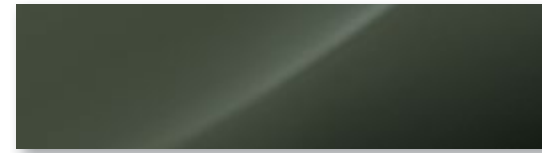
218
Attitude Black Metallic



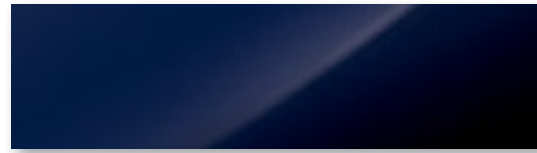
3T0
Ooh La La Rouge Mica



5B2
Crème Brûlée Mica



6W4
Alumina Jade Metallic



8S6
Nautical Blue Metallic

INTERIOR COLOUR OPTIONS

	Blizzard Pearl	Silver Sky Metallic	Pre-Dawn Grey Mica	Attitude Black Metallic	Ooh La La Rouge Mica	Crème Brûlée Mica	Alumina Jade Metallic	Nautical Blue Metallic
LE	Black Fabric or SofTex®/Fabric	Grey Fabric or SofTex®/Fabric	Black Fabric or SofTex®/Fabric	Grey Fabric or SofTex®/Fabric	Black Fabric or SofTex®/Fabric	Black Fabric or SofTex®/Fabric		Grey Fabric or SofTex®/Fabric
LE AWD	Black Fabric or SofTex®/Fabric	Grey Fabric or SofTex®/Fabric	Black Fabric or SofTex®/Fabric	Grey Fabric or SofTex®/Fabric	Black Fabric or SofTex®/Fabric	Black Fabric or SofTex®/Fabric		Grey Fabric or SofTex®/Fabric
XLE AWD	Black or Beige Leather	Black Leather	Black or Grey Leather	Black or Grey Leather	Black Leather	Black Leather	Beige Leather	Black Leather
Limited AWD	Black or Beige Perforated Leather	Black Perforated Leather	Black or Grey Perforated Leather	Black or Grey Perforated Leather	Black Perforated Leather	Black Perforated Leather	Beige Perforated Leather	Black Perforated Leather
Hybrid LE	Black SofTex®/Fabric	Grey SofTex®/Fabric	Black SofTex®/Fabric	Grey SofTex®/Fabric	Black SofTex®/Fabric	Black SofTex®/Fabric		Grey SofTex®/Fabric
Hybrid XLE	Black or Beige Leather	Black Leather	Black or Grey Leather	Black or Grey Leather	Black Leather	Black Leather	Beige Leather	Black Leather
Hybrid Limited	Black or Beige Perforated Leather	Black Perforated Leather	Black or Grey Perforated Leather	Black or Grey Perforated Leather	Black Perforated Leather	Black Perforated Leather	Beige Perforated Leather	Black Perforated Leather

Please see your Toyota Dealer for details.

Genuine Accessories

SCAN WITH LAYAR TO VIEW AVAILABLE ACCESSORIES



Personalize your Highlander or Highlander Hybrid to enhance both its appearance and performance. Many of Toyota's Genuine Accessories can be residualized or advanced through Toyota Financial Services when purchased at the same time as your new vehicle, and yes, they are all backed by a Toyota Warranty. For a complete list of vehicle-specific accessories, visit accessories.toyota.ca or your local Dealer.



- Bodyside Mouldings
- Cargo Liner
- Cargo Net
- Hood Deflector
- Paint Protection Film
- Plug-In Block Heater
- Remote Engine Starter (For Smart Key Models)
- Roof Rack
- Running Boards
- Towing Hitch

Committed to Canadians, today and tomorrow.

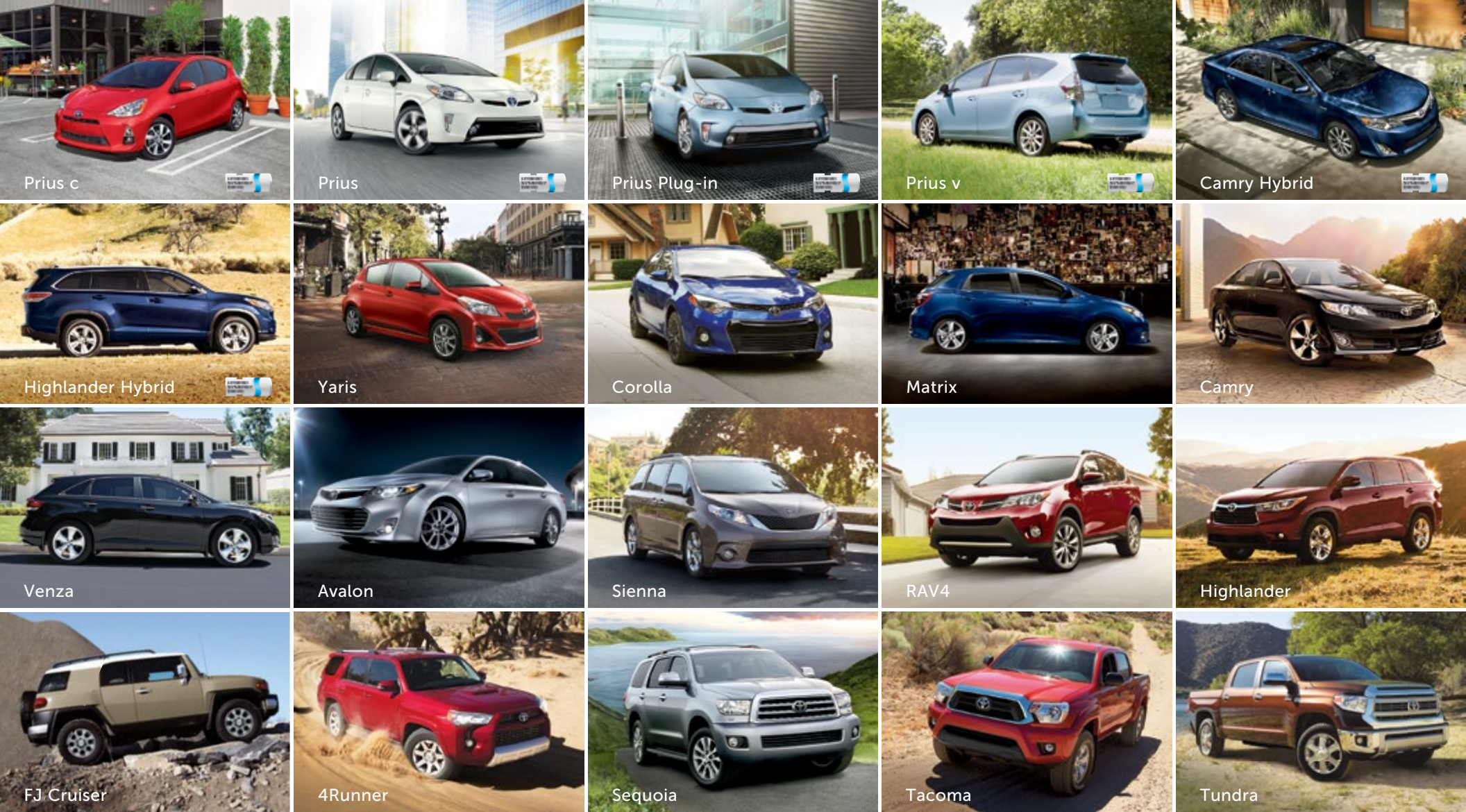


Being a leader in the automotive industry does not simply start and finish with making great vehicles. It also means being a leader in the community. Toyota Canada and its dealerships across the country fund non-profit programs that work to make a difference for Canadians through direct community involvement.

As part of our ongoing commitment to the environment and education, we established the Toyota Evergreen Learning Grounds program. This program is designed to transform Canadian school grounds into natural learning environments so that students can have a healthy place to play, learn and develop a genuine respect for nature. We also support Special Olympics Canada, which helps athletes reach their full potential through participation in events from a local to a national level.

Visit us at toyota.ca to learn more about our programs and commitment to build a better tomorrow for Canadian communities – today.





Prius c

Prius

Prius Plug-in

Prius v

Camry Hybrid

Highlander Hybrid

Yaris

Corolla

Matrix

Camry

Venza

Avalon

Sienna

RAV4

Highlander

FJ Cruiser

4Runner

Sequoia

Tacoma

Tundra

At Toyota quality, safety and sustainability are built into every vehicle we make. To learn more about Toyota's commitment to manufacturing safe, high quality, long lasting vehicles – and to see the awards we've won for doing just that – visit toyota.ca.

SCAN WITH LAYAR
FOR INTERACTIVE LINKS



Toyota recognizes its duty to safeguard the environment. Please recycle.
PRINTED IN CANADA C0002-0534E-25 25M/17M

