

2015

RAV4



Rethink playtime.



This brochure features enhanced and interactive content using the Layar app

Once you scan the page with Layar, you can switch between English and French interactive content



Download the free Layar app on your Android or Apple device



Find and scan pages with the Layar logo



Discover enhanced content



RAV4 LE with Upgrade Package shown in Black. XLE shown in Blue Crush Metallic. Limited shown in Barcelona Red Metallic.

FRONT COVER Limited shown in Black.



Built in Canada

The 2015 RAV4 is built at our Woodstock, Ontario assembly plant. The first Canadian-built RAV4 rolled off the line in 2008.¹¹

The beauty is in the details.

Let's face it – we could all use a little more playtime. And the 2015 RAV4 will help you do just that. Its incredible styling, versatility, advanced technology, and enhanced features make every ride as exciting as the last. Its spacious interior offers added legroom for rear seat passengers, thanks to sleek front seatbacks. An acoustic glass windshield, and sound absorption materials featured throughout the vehicle help to prevent noise from entering the cabin, creating a whisper-quiet ride. With thoughtful interior features, available French stitching on the premium seats, metallic-toned gauges, and an available illuminated front cupholder, RAV4 offers an interior that's so cozy you won't want the ride to end, even on those really long road trips.



AVAILABLE SOFTEX® TRIMMED SEATS



AVAILABLE DUAL ZONE AUTOMATIC CLIMATE CONTROL



AVAILABLE DRIVER AND FRONT PASSENGER HEATED SEATS



RECLINING SECOND-ROW SEAT



AVAILABLE POWER MOONROOF



Limited shown in Barcelona Red Metallic.



Playing comes naturally.

Whether you're choosing your favourite song, checking your voice messages, or deciding the route of your next adventure, RAV4's got you covered. And thanks to the thoughtfully designed dynamic instrument panel, everything is arranged around the driver for easy and convenient use. With the available Smart Key fob in your pocket or purse, you can lock and unlock the front doors and liftgate with the touch of a handle, and start the vehicle with the push of a button.

JBL® DISPLAY AUDIO SYSTEM⁴ WITH NAVIGATION⁵ The available JBL® Display Audio System⁴ features a 6.1-inch touch-screen with Bluetooth^{®3} wireless music streaming, and a unique "text-to-speech" feature that converts text messages from your phone into voice messages, which play through the vehicle's speaker system.



USB PORT AND AUXILIARY INPUT JACK



SMART KEY SYSTEM/PUSH BUTTON START



BLUETOOTH^{®3} CONNECTIVITY

Limited shown in Black.



Because adventures come in all shapes and sizes.

For the driver who's always on the go, the 2015 RAV4 is designed to make every trip as simple and convenient as possible. RAV4's rear cargo area is easy to access with an available power liftgate that can be opened with just a push of a button. Need extra space in a hurry? The 60/40 split rear bench seat can fold down to create a wide, flat, and spacious cargo area. And with a low, flat-load floor you can pack your cargo faster and with less effort. It also makes the perfect place to sit and watch the sunset with a friend or two.

ADJUSTABLE POWER LIFTGATE The available adjustable power liftgate has an innovative height-adjustment memory feature that can be set to open to your preferred height. Simply raise the liftgate to your ideal height, then press and hold the cargo door button for two seconds until a confirmation beep sounds. Now, whether you open the liftgate via handle or key fob, it will rise to the desired height every time.



2080 LITRES
OF CARGO SPACE

Some of the best adventures happen at the last minute. RAV4 is flexible, with rear seatbacks that easily fold flat to create an impressive 2080 litres of cargo space.



AVAILABLE TONNEAU COVER



UNDER CARGO AREA STORAGE COMPARTMENT



AVAILABLE CARGO NET (LIMITED)

The thrill of being in control.

An incredible drive starts at the engine. The standard 2015 RAV4 2.5-litre DOHC engine produces 176 horsepower, along with 172 lb.ft. of torque to make short work of long roads. And with its Dual Variable Valve Timing with intelligence (Dual VVT-i) technology, it's also amazingly efficient. The 6-speed Electronically Controlled automatic Transmission with intelligence (ECT-i) keeps RAV4's engine in its sweet spot to optimize power output, while continually adjusting itself to suit your driving style. The transmission also features Sequential Shift Mode, which allows the driver to take control of the shifting manually.

DRIVE MODE SELECT Drive Mode Select enables you to make your RAV4 more responsive, or efficient. ECO mode moderates the throttle response and climate settings for increased fuel efficiency. Sport mode alters the powertrain for faster gear changes and more dynamic throttle mapping. In RAV4 AWD, Sport mode also adjusts the distribution of engine torque based on steering input to enhance cornering ability.

AERODYNAMIC EFFICIENCY RAV4's exterior is more than just looks. Aerodynamic fins on the outer mirrors and the combination lamps help to manage air turbulence around the vehicle. Underbody covers and a rear spoiler also help enhance airflow management to reduce drag.

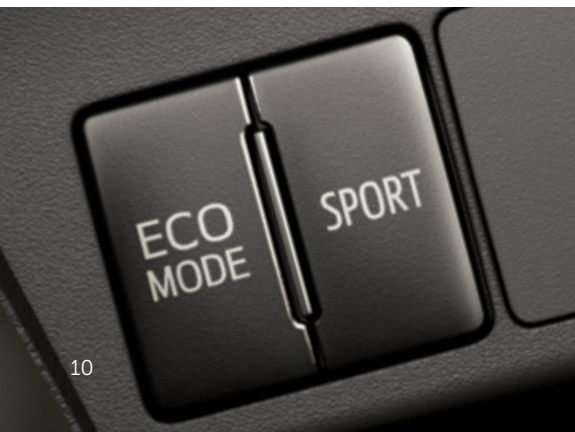
RETUNED SUSPENSION Mated to a strong and stiff body structure is a suspension system with optimized spring rates and shock absorbers. The MacPherson strut suspension up front is paired with a double-wishbone type suspension in the rear, enhancing RAV4's overall ride quality.



ALL WHEEL DRIVE

We believe the driver should be in charge of the excitement. Whether you're on an open paved road or a bumpy, winding trail, RAV4's available Dynamic Torque Control All Wheel Drive (AWD) system distributes engine power from front to rear, giving you maximum control on a variety of surfaces. RAV4 also comes available with a Lock Switch, which when engaged, provides further traction among all four wheels when on muddy, sandy, or snowy surfaces.

XLE shown in Barcelona Red Metallic.





Safety and innovation in perfect harmony.

With Toyota's safety features, you'll have the peace of mind you need to take on any adventure that comes your way. In fact, over 90% of RAV4s sold in the last 15 years are still on the road today*. And because real adventure requires protective gear, we've equipped the 2015 RAV4 with a variety of active and passive safety features. Whether you're en route to the cottage for the weekend, navigating through busy city streets, or travelling from one end of the country to the other, RAV4 offers a host of safety innovations to get you there safely.

BLIND SPOT MONITOR⁹ WITH REAR CROSS-TRAFFIC ALERT⁹ Available on RAV4 Limited, the Blind Spot Monitor (BSM)⁹ uses radar technology to help you identify vehicles that may not be visible in your mirrors. When BSM detects a vehicle in your blind spot, the system illuminates a warning indicator on the appropriate outside mirror. Rear Cross-Traffic Alert (RCTA)⁹ works in a similar manner, in that it alerts you to rear cross traffic that may intersect with your own vehicle's path through both visual and audible warnings.

BACKUP SENSORS The available rear backup sensors notifies you of obstacles that are detected behind the vehicle.

LANE DEPARTURE ALERT¹⁰ The available Lane Departure Alert (LDA)¹⁰ uses a camera to monitor visible lane markings, alerting you if you are drifting.

BACKUP CAMERA When in reverse, the available backup camera displays the visible area behind the vehicle on the Display Audio Touch-Screen.

*Based on IHS Automotive: Polk Canadian vehicles in operation and new registrations MY 2000-2014 as of June 30, 2014.



STAR SAFETY SYSTEM™

VSC VEHICLE STABILITY CONTROL

Helps prevent slips and loss of traction by reducing engine power and applying the brake force to the wheels that need it.⁶

TRAC TRACTION CONTROL

Helps maintain traction on wet, icy, loose or uneven surfaces by applying brake force to the spinning wheel(s).

ABS ANTI-LOCK BRAKE SYSTEM

Prevents brakes from locking up by "pulsing" brake pressure to each wheel to help you stay in control in emergency braking situations.

EBD ELECTRONIC BRAKE-FORCE DISTRIBUTION

Redistributes brake force to help keep the rear wheels from locking up during sudden braking situations.

BA BRAKE ASSIST

Detects sudden or "panic" braking and adds the full pressure needed to help prevent a collision.⁷

SST SMART STOP TECHNOLOGY

Smart Stop Technology is designed to reduce engine power when the brake is firmly applied helping to bring the vehicle to a stop, even if the accelerator pedal is fully depressed.⁸

8

AIRBAGS¹ Protecting you, your friends, and family is our first priority. That's why RAV4 comes with a total of eight standard airbags: driver and front passenger advanced airbags, driver and front passenger seat-mounted side airbags, driver's knee airbag, front passenger seat cushion airbag, roll-sensing front and rear head/side curtain airbags.

XLE shown in Blue Crush Metallic.



Nothing is more important than the safety of you and your family. And that's why every 2015 Toyota vehicle comes standard with the Star Safety System™. It integrates an array of active safety technologies that work together to protect occupants by helping drivers avoid accidents in the first place. Safety is our number one priority and that is why Toyota was the first manufacturer to make all of the elements of the Star Safety System™ standard on every new vehicle. No matter which Toyota you choose, you'll know it comes with peace of mind built right in.

Visit toyota.ca

Colours

EXTERIOR COLOUR OPTIONS



INTERIOR COLOUR OPTIONS

	FWD LE	FWD XLE	AWD LE	AWD XLE	AWD LIMITED
ALPINE WHITE	BLACK Fabric	ASH or BLACK Fabric	BLACK Fabric	ASH or BLACK Fabric	–
BLIZZARD PEARL	–	–	–	–	BLACK or TERRA COTTA SofTex®
CLASSIC SILVER METALLIC	BLACK Fabric	ASH or BLACK Fabric	BLACK Fabric	ASH or BLACK Fabric	ASH or BLACK SofTex®
MAGNETIC GREY METALLIC	BLACK Fabric	ASH or BLACK Fabric	BLACK Fabric	ASH or BLACK Fabric	BLACK or TERRA COTTA SofTex®
BLACK	BLACK Fabric	BLACK Fabric	BLACK Fabric	BLACK Fabric	BLACK or TERRA COTTA SofTex®
BARCELONA RED METALLIC	BLACK Fabric	BLACK Fabric	BLACK Fabric	BLACK Fabric	BLACK SofTex®
HOT LAVA	–	BLACK Fabric	–	BLACK Fabric	BLACK SofTex®
PYRITE MICA	–	BLACK Fabric	–	BLACK Fabric	BLACK SofTex®
BLUE CRUSH METALLIC	BLACK Fabric	BLACK Fabric	BLACK Fabric	BLACK Fabric	BLACK SofTex®

Please see your Toyota Dealer for details.



RAV4 features

INTERIOR	LE	XLE	LE	XLE	Limited
	FWD		AWD		
ENTERTAINMENT & CONNECTIVITY					
AM/FM/CD Audio System, MP3 Playback	●	–	●	–	–
6.1" Touch Panel Display Audio ⁴ , AM/FM/CD Player, MP3 Playback	–	●	–	●	–
6.1" Touch Panel Display Audio ⁴ w/Navigation ⁵ , AM/FM/CD Player, MP3 Playback	–	–	–	–	●
SiriusXM [®] Satellite Radio, Gracenote [®] Album Cover Art	–	●	–	●	●
USB Input Port, Auxiliary Input Jack, Bluetooth [®] Hands-Free Phone Connectivity/Wireless Audio Streaming/Phone Book Access	●	●	●	●	●
Text-to-Speech Capabilities	–	–	–	–	●
Voice Recognition	–	●	–	●	●
4-Speakers	●	–	●	–	–
6-Speakers	–	●	–	●	●
Steering Wheel Audio & Bluetooth [®] Controls	●	●	●	●	●
Backup Camera	–	●	–	●	●
COMFORT & CONVENIENCE					
Air Conditioning	●	–	●	–	–
Dual Zone Automatic Climate Control, Soft Touch Heater Controls	–	●	–	●	●
Cabin Air Filter, Rear Seat Heater Ducts	●	●	●	●	●
Power Door Locks	●	●	●	●	●
Power Windows w/Driver Side Auto Down	●	–	●	–	–
Power Windows w/Driver Side Auto Up/Down	–	●	–	●	●
Tachometer, Outside Temperature Gauge, Water Temperature Gauge, Dual Trip Odometer, Fuel Economy Meter	●	●	●	●	●
Dual Vanity Mirrors	●	●	●	●	●
Day/Night Rear View Mirror	●	●	●	●	–
Auto-Dimming Rear View Mirror	–	–	–	–	●
3-Spoke, Tilt & Telescopic Steering Wheel	●	●	●	●	●
Leather-Wrapped Steering Wheel & Shift Knob	–	–	–	–	●
Chrome Inner Door Handles	–	●	–	●	●
Tonneau Cover	–	●	–	●	●
Push Button Start, Smart Key System	–	–	–	–	●
Carpet Floor Mats, All-Season Floor Mats	●	●	●	●	●
Cruise Control, Digital Clock	●	●	●	●	●
Front & Rear Cupholders	●	●	●	●	●
Illuminated Front Cupholder	–	–	–	–	●
Coat Hooks	●	●	●	●	●
Front Centre Console Storage Box	●	●	●	●	●
Front Seat Back Pockets, Door Map Pockets	●	●	●	●	●
Cargo Area Tie-Down Rings	●	●	●	●	●
Under Cargo Area Storage Compartment	●	●	●	●	●
Cargo Net	–	–	–	–	●

● = Standard ○ = Optional – = Not Available

INTERIOR (cont'd)	LE	XLE	LE	XLE	Limited
	FWD		AWD		
Map Lamps, Cargo Lamp	●	●	●	●	●
Accessory Power Outlet (12 V)	●	●	●	●	●
Retained Accessory Power	●	●	●	●	●
Keyless Entry	●	●	●	●	●
Illuminated Entry	●	●	●	●	●
SEATING & TRIM					
Front Bucket Seats	●	–	●	–	–
Heated Front Bucket Seats	–	●	–	●	●
Soft-Touch Instrument Panel w/Stitching	–	–	–	–	●
Fabric Seat Material, Fabric Door Trim	●	–	●	–	–
Sport Fabric Seat Material, Fabric Door Trim	–	●	–	●	–
SofTex [®] Trimmed Seats, SofTex [®] Door Trim	–	–	–	–	●
Driver Seat w/Recline, Fore/Aft, Driver Cushion Height Adjustments	●	●	●	●	–
Power 8-Way Driver Seat w/Memory System	–	–	–	–	●
Passenger Seat w/Recline, Fore/Aft Adjustments	●	●	●	●	●
60/40 Split Rear Bench Seat w/Fold-Down Seat Back, Fold-Down Centre Armrest	●	●	●	●	●
EXTERIOR					
Electric Rear Window Defroster w/Timer	●	●	●	●	●
Adjustable Height Power Rear Liftgate w/Jam Protection	–	–	–	–	●
Front Windshield Acoustic Glass	●	●	●	●	●
High Solar Energy Absorbing Window Glass	●	●	●	●	●
Rear Privacy Glass	–	●	–	●	●
Colour-Keyed Rear Spoiler w/LED Stop Lamp	●	●	●	●	●
Front & Rear Splash Guards	●	●	●	●	●
Silver-Painted Roof Rails	–	●	–	●	●
Colour-Keyed Door Handles & Mirrors	●	●	●	●	●
Power Moonroof	–	●	–	●	●
LE Badge	●	–	●	–	–
XLE Badge	–	●	–	●	–
Limited Badge	–	–	–	–	●
Dual Heated, Power Adjustable Mirrors w/Integrated Turn Signals	●	●	●	●	●
Intermittent Wipers, Wiper De-Icer	●	–	●	–	–
Variable Intermittent Wipers, Wiper De-Icer	–	●	–	●	●
Rear Window Intermittent Wiper/Washer	●	●	●	●	●
Projector-Style Halogen Headlamps	●	●	●	●	●
Automatic Headlamp System	–	●	–	●	●
Fog Lamps	–	●	–	●	●

RAV4 features *(cont'd)*

SAFETY	LE	XLE	LE	XLE	Limited
	FWD		AWD		
STAR SAFETY SYSTEM™ Star Safety System™ – includes Vehicle Stability Control (VSC) ⁶ , Traction Control (TRAC), Anti-lock Brake System (ABS), Electronic Brake-force Distribution (EBD), Brake Assist (BA) ⁷ & Smart Stop Technology (SST) ⁸	●	●	●	●	●
Dual-Stage Driver & Front Passenger Airbag Supplemental Restraint System (SRS) ¹	●	●	●	●	●
Driver's Knee Airbag (SRS) ¹	●	●	●	●	●
Front Seat-Mounted Side Airbags (SRS) ¹	●	●	●	●	●
Roll-Sensing Front & Rear Head/Side Curtain Airbags (SRS) ¹	●	●	●	●	●
Front Passenger Seat Cushion Airbag (SRS) ¹	●	●	●	●	●
Front Seatbelt Pre-Tensioners & Force Limiters	●	●	●	●	●
All-Position Vertically Adjustable Headrests	●	●	●	●	●
Front Seatbelt Anchor Height Adjusters	●	●	●	●	●
All-Position 3-Point Lap & Shoulder Belts	●	●	●	●	●
Anchor Points for Child Restraint Seats	●	●	●	●	●
Child Protector Rear Door Locks	●	●	●	●	●
Vehicle Anti-Theft System	–	●	–	●	●
Engine Immobilizer	●	●	●	●	●
Door Ajar, Low Washer Fluid, Low Fuel, Driver & Front Passenger Seatbelt Warning Indicators	●	●	●	●	●
Automatic Transmission Fluid Temperature Warning Indicator	–	–	●	●	●

AVAILABLE PACKAGES

LE UPGRADE PACKAGE	○	–	○	–	–
6.1" Touch Panel Display Audio ⁴ , Voice Recognition, 6-Speakers, Backup Camera, Rear Privacy Glass, Tonneau Cover, Silver-Painted Roof Rails, Heated Cloth Front Seats					
XLE NAVIGATION PACKAGE	–	○	–	○	–
6.1" Touch Panel Display Audio ⁴ w/Navigation ⁵ , Text-to-Speech Capabilities					
LIMITED TECHNOLOGY PACKAGE	–	–	–	–	○
6.1" Touch Panel Display Audio ⁴ w/Navigation ⁵ , Premium JBL® AM/FM/CD Player, 11-Speakers, Voice Recognition, Blind Spot Monitor (BSM) ⁹ , Rear Cross-Traffic Alert (RCTA) ⁹ , Lane Departure Alert (LDA) ¹⁰ , Backup Sensors, Automatic High Beam System					

RAV4 specifications

MECHANICAL	LE	XLE	LE	XLE	Limited
	FWD		AWD		
ENGINE					
Type					
2.5 Litre, 4-Cylinder, DOHC, 16-Valve, Dual Variable Valve Timing w/intelligence (Dual VVT-i), Sequential Multiport Electronic Fuel Injection, Drive Mode Select	●	●	●	●	●
Compression Ratio					
10.4:1	●	●	●	●	●
Horsepower					
176 hp @ 6000 rpm	●	●	●	●	●
Torque					
172 lb.ft. @ 4100 rpm	●	●	●	●	●
DRIVETRAIN					
Drive Configuration					
Front Engine/Front Wheel Drive	●	●	–	–	–
Dynamic Torque Control AWD	–	–	●	●	●
Transmission					
6-Speed, Automatic, Electronically Controlled Transmission w/intelligence (ECT-i), Sequential Shift Mode, Gate-Type Shifter, Transmission Cooler	●	●	●	●	●
CHASSIS					
Suspension					
Front: Independent, MacPherson Strut w/Hydraulic Shock Absorbers, Stabilizer Bar	●	●	●	●	●
Rear: Double-Wishbone Coil Spring Rear Suspension w/Trailing Arms & Hydraulic Shock Absorbers, Stabilizer Bar	●	●	●	●	●
Brakes					
Power-Assisted, Ventilated Front Discs, Solid Rear Discs	●	●	●	●	●
Steering					
Electric Rack & Pinion w/Variable Power Assist	●	●	●	●	●
Wheels & Tires					
17" Steel Wheels, Full Wheel Covers	●	–	●	–	–
17" Aluminum Alloy Wheels, Wheel Locks	–	●	–	●	–
18" Aluminum Alloy Wheels, Wheel Locks	–	–	–	–	●
P225/65R17, All-Season Tires, Compact Spare Tire	●	●	●	●	–
P235/55R18, All-Season Tires, Compact Spare Tire	–	–	–	–	●

DIMENSIONS	mm (in.)	LE	XLE	LE	XLE	Limited
		FWD		AWD		
Length	4570 (179.9)	●	●	●	●	●
Width	1845 (72.6)	●	●	●	●	●
Height (Unloaded)	1660 (65.4) w/o Roof Rails	●	–	●	–	–
	1705 (67.1) w/Roof Rails	–	●	–	●	●
Wheelbase	2660 (104.7)	●	●	●	●	●
Track	Front: 1560 (61.4)	–	–	–	–	●
	Rear: 1560 (61.4)	–	–	–	–	●
	Front: 1570 (61.8)	●	●	●	●	–
	Rear: 1570 (61.8)	●	●	●	●	–
Headroom	Front: 1012 (39.8)	●	–	●	–	–
	Front: 988 (38.9) w/Moonroof	–	●	–	●	●
	Rear: 988 (38.9)	●	●	●	●	●
Legroom	Front: 1081 (42.6)	●	●	●	●	●
	Rear: 944 (37.2)	●	●	●	●	●
Shoulder Room	Front: 1455 (57.3)	●	●	●	●	●
	Rear: 1407 (55.4)	●	●	●	●	●
Turning Circle	<i>m (ft.)</i>					
	10.6 (34.8)	●	●	●	●	–
	11.2 (36.7)	–	–	–	–	●
Ground Clearance	159 (6.3)	●	●	●	●	●

WEIGHT & CAPACITIES		LE	XLE	LE	XLE	Limited
		FWD		AWD		
Curb Weight	<i>kg (lb)</i>					
	1545 (3435)	●	–	–	–	–
	1560 (3465)	–	●	–	–	–
	1600 (3550)	–	–	●	–	–
	1615 (3585)	–	–	–	–	–
	1620 (3600)	–	–	–	–	●
Seating Capacity	5	●	●	●	●	●
Cargo Capacity	<i>litres (cu.ft.)</i>					
	2080 (73.4) Behind Front Seats	●	●	●	●	●
	1090 (38.4) Behind Rear Seats	●	●	●	●	●
Fuel Capacity	<i>litres (imperial gallon)</i>					
	60 (13.2)	●	●	●	●	●
Towing Capacity	<i>kg (lb)</i>					
	680 (1500)	●	●	●	●	●

FUEL CONSUMPTION RATING²

City/Highway/Combined	L/100 km	mpg (imperial gallon)	LE	XLE	LE	XLE	Limited
	10.0/7.6/8.9	28/37/32	●	●	–	–	–
	10.5/8.2/9.5	27/34/30	–	–	●	●	–
	10.7/8.3/9.6	26/34/29	–	–	–	–	●

Genuine accessories

Personalize your RAV4 to enhance both its appearance and performance. Many of Toyota's Genuine Accessories can be residualized or advanced through Toyota Financial Services when purchased at the same time as your new vehicle, and yes, they are all backed by a Toyota Warranty. For a complete list of vehicle-specific accessories, visit accessories.toyota.ca or your local Dealer.

17" Steel Wheels - Silver	Bongiovi Acoustics DPS	Paint Protection Film	Running Boards
Auto-Dimming Rear View Mirror with Compass	Cargo Liner	Remote Engine Starter (Limited model)	Security System
Block Heater	Cargo Net	Roof Rack - Cross Bars	Tonneau Cover
Bodyside Mouldings	Door Sill Protectors	Roof Rack - Rail Kit	Towing Hitch
	Hood Deflector		



Hood Deflector



Bodyside Mouldings



Paint Protection Film



Running Boards



Cargo Liner



Bongiovi Acoustics DPS



Towing Hitch



Roof Rack - Cross Bars



Committed to Canadian Communities

Being a leader in the automotive industry does not simply start and finish with making great vehicles. It also means being a leader in the community. Toyota Canada, and its dealerships across the country support non-profit programs that work to make a difference for Canadians in the areas of environment, safety education and quality.

Together with Evergreen, we established the Toyota Evergreen Learning Grounds program, designed to transform Canadian school grounds into natural learning environments so students can have a healthy place to play, learn, and develop a genuine respect for nature. Toyota also supports kartSTART, a program educating Canadian youth about vehicle safety in vehicles that fit them, go-karts. As part of our ongoing commitment to innovation, Toyota's Collaborative Safety Research Center is partnered with the University of Toronto in a study designing feedback (alerts) in vehicles to help induce safer driving behaviours.

Visit us at toyota.ca to learn more about our programs and commitment to Canadian communities.



New vehicle warranty summary – No deductibles – no transfer fees

COMPREHENSIVE COVERAGE 3 years or 60,000 km. This warranty includes 24 hour Roadside Assistance and other benefits, as well as coverage of repairs on any part of the vehicle that is defective in material or workmanship under normal use and maintenance. Different warranties apply to original tires.

POWERTRAIN COMPONENTS 5 years or 100,000 km. This warranty covers repairs to powertrain components that are defective in material or workmanship under normal use and maintenance.

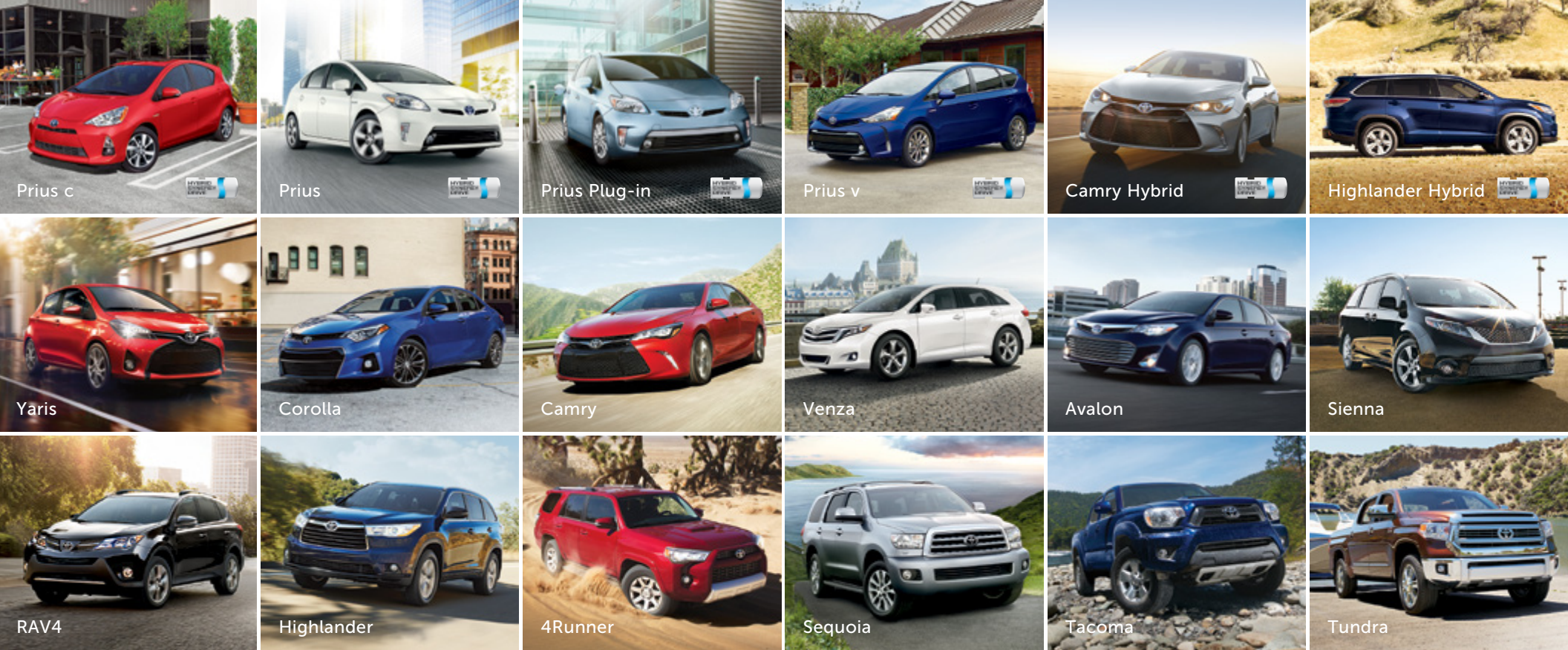
MAJOR EMISSION CONTROL COMPONENTS 8 years or 130,000 km. This warranty covers repairs to specified major emission components that are defective in material or workmanship under normal use and maintenance.

CORROSION PERFORATION 5 years/unlimited distance. This warranty covers any sheet metal found, under normal use, to have developed a perforation from corrosion due to defects in material or workmanship.

Disclaimers

(1) All Toyota vehicles shown in this brochure have Supplemental Restraint Systems (SRS). For important safety information about the Supplemental Restraint System in a particular vehicle, please see the Owner's Manual or contact your local Toyota Dealer. (2) Fuel efficiency estimates were determined using approved Government of Canada Test Methods. Actual fuel consumption will vary based on driving habits and other factors. (3) Toyota tests certain Bluetooth® capable phones for compatibility with Toyota vehicles. Note that the recommendation of Toyota is not a warranty of the performance for any phone and that some problems may occur with any type of handset based on the phone software version or the service coverage available in your area. Some vehicles equipped with Bluetooth® technology are available with bilingual compatibility. Please see your Toyota Dealer for details. (4) Driving while distracted can result in loss of vehicle control. Always drive safely, obey traffic laws and focus on the road and traffic conditions while driving. (5) The Toyota Navigation System is designed to assist in locating an address or point of interest. Discrepancies may be encountered between the system and your actual location. Rely on your common sense to decide whether or not to follow a specified route. Detailed coverage is not available for every city or roadway. Optional periodic geographic updates are available at an additional cost. The Navigational systems in some vehicles are available with bilingual capability. Please see your Navigation System Owner's Manual and your Toyota Dealer for further details. (6) Vehicle Stability Control (VSC) is an electronic system designed to help the driver maintain vehicle control under adverse conditions. It is not a substitute for safe driving practices. Factors including speed, road conditions and driver steering input can all affect whether VSC will be effective in preventing a loss of control. Please see your Owner's Manual for further details. (7) Brake Assist is designed to help the driver take full advantage of the benefits of ABS. It is not a substitute for safe driving practices. Braking effectiveness also depends on proper brake-system maintenance and tire and road conditions. (8) Smart Stop Technology operates only in the event of certain simultaneous brake and gas pedal applications. When engaged, the system will reduce engine power to help the brakes bring the vehicle to a stop. Factors including speed, road conditions, driver input can all impact stopping distance. Smart Stop Technology is not a substitute for safe and attentive driving and does not guarantee instant stopping. Please see your Owner's Manual for further details. (9) Do not rely exclusively on the Blind Spot Monitor System and Rear Cross-Traffic Alert System. They are not collision-avoidance systems or substitutes for safe and attentive driving. (10) Lane Departure Alert is not a collision-avoidance system or a substitute for safe and attentive driving. (11) Toyota Canada is proud to say that all Toyota vehicles built in Canada are made from Canadian and globally sourced parts.

Toyota Canada Inc. Every effort has been made to ensure the specifications and equipment shown are accurate based on information available at time of printing. In some cases, certain changes in production capacity, standard equipment, options or product delays may occur which would not be reflected in this brochure. Toyota Canada Inc. reserves the right to make these changes without notice or obligation. The Toyota website toyota.ca – or your Toyota Dealer is your best source for up-to-date information.



At Toyota quality, safety and sustainability are built into every vehicle we make.

To learn more about Toyota's commitment to manufacturing safe, high quality, long lasting vehicles – and to see the awards we've won for doing just that – visit toyota.ca.



Toyota recognizes its duty to safeguard the environment.
Please recycle. Printed in Canada C0002-0475E-25 31M/60M

