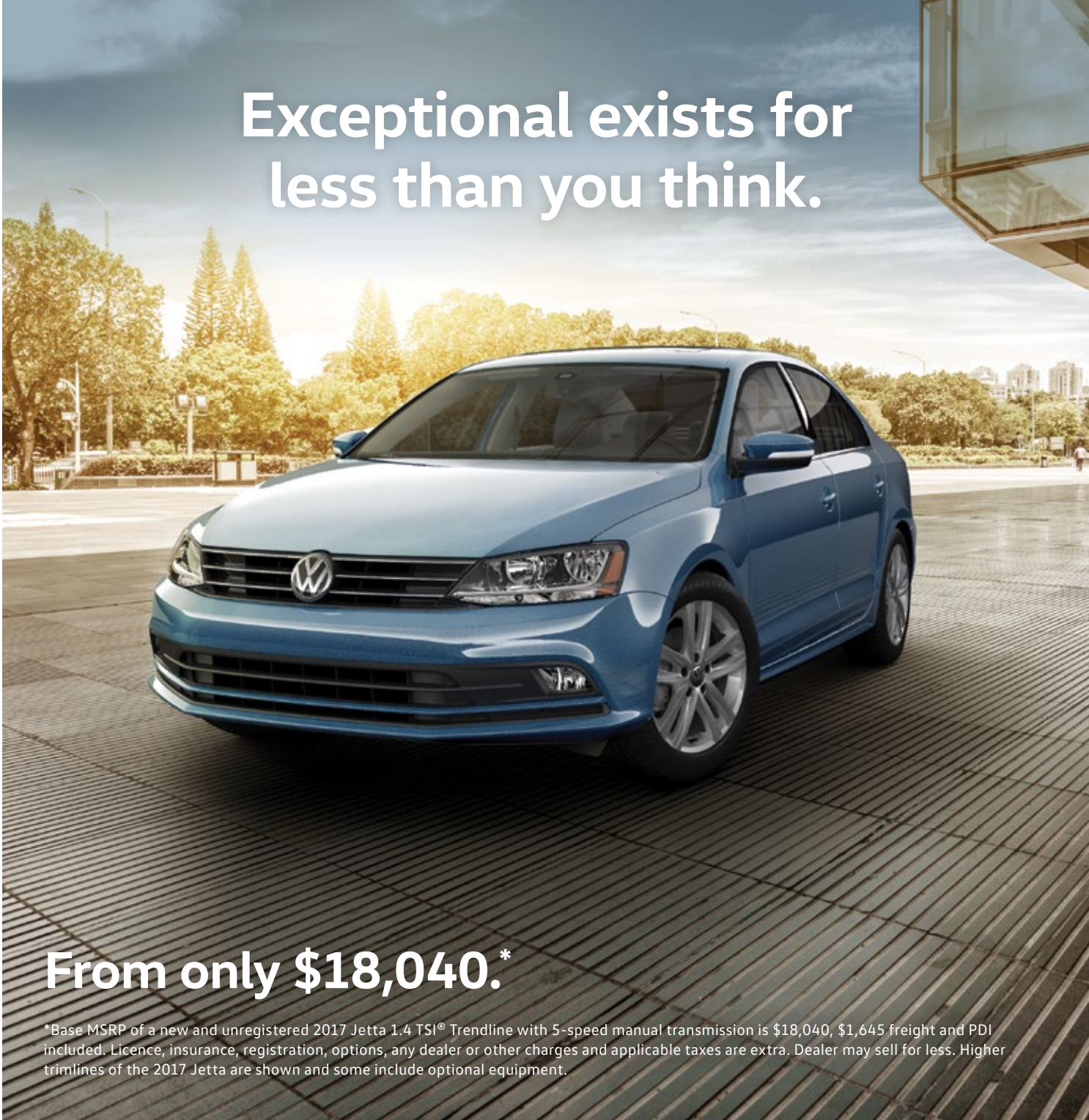


2017

Jetta



Volkswagen



Exceptional exists for
less than you think.

From only \$18,040.*

*Base MSRP of a new and unregistered 2017 Jetta 1.4 TSI® Trendline with 5-speed manual transmission is \$18,040, \$1,645 freight and PDI included. Licence, insurance, registration, options, any dealer or other charges and applicable taxes are extra. Dealer may sell for less. Higher trimlines of the 2017 Jetta are shown and some include optional equipment.

If you want amazing value, look no further. The 2017 Jetta could very well be the perfect car. It offers an exceptionally refined driving experience and has features you wouldn't expect in a vehicle of this class. It's German engineering (and great value) done very, very well.

Design

We've reimagined contemporary with a clean, crisp design that makes it easy to show off your exceptionally good taste – and eye for value.

Quality

Just wait till you sit in the driver's seat. You'll see, hear and feel the remarkable quality that will have you saying, "I know I made the right choice."

Technology

You'll enjoy a wonderful driving experience, and the fact that it's packed with advanced technology to help keep you safe, comfortable and connected. Because that's the way you roll.

Performance

Whether you measure performance by horsepower or fuel efficiency, it doesn't matter. Because you can have both in one substantial package.

Let technology take you places.

The 2017 Jetta comes packed with a lot of technology – including available App-Connect. So finding your favourite tune, next destination, the best place for BBQ and so much more is right at your fingertips.



Available App-Connect*

It's intuitive and easy to use. With simple voice commands you can search for your favourite tunes, find an interesting new place to eat, and stay in touch with family and friends. You can also dictate text messages and have incoming texts read to you. Works via Android Auto™, Apple CarPlay™ and MirrorLink™.

Standard rearview camera**

Rearview mirrors and turning your head only tell you part of the story. Get a better view of what's behind you so you can avoid otherwise unseen obstacles and reverse into parking spots with greater precision.

Available KESSY keyless entry with push-start button

Avoid searching for your keys in your pocket or purse. Simply walk within 1.5 metres of your vehicle and the door automatically unlocks when you pull the door handle. Then, the engine can be started by simply pushing the start button – no need to remove the key from your pocket.

*Do not drive distracted.

**Driver assistance feature. Drivers must continue to perform manual checks before proceeding and pay full attention to the road.

This car's got spunk.



The 2017 Jetta offers two engine choices – and whichever you choose, you can look forward to a spirited drive on your daily commute or cross-country journey.



1.4 TSI[®] engine

Its lighter weight and smaller size offer superior fuel efficiency while the turbocharger gives you plenty of power when called upon with excellent throttle response and torque.

Available 6-speed automatic transmission

Enjoy spirited starts from stop signs and smooth, quiet cruising on the highway. With six speeds, the 2017 Jetta isn't just fuel-efficient, it's fun-efficient.

Fuel Consumption*	Engine	City L/100 km	Highway L/100 km
Manual	1.4 TSI [®]	8.3	5.9
Automatic	1.4 TSI [®]	8.5	6.2
Automatic	1.8 TSI [®]	9.4	6.8

*Fuel consumption figures are estimates based on Natural Resources Canada's approved criteria and testing methods. Your fuel consumption will vary.

Everything in its place. With perfect precision.

Contemporary, modern and right at home at the lumberyard or a five-star restaurant, the 2017 Jetta has a host of special touches that put the "value" quotient at very high.



Available Bi-Xenon headlights with Adaptive Front-light System

They're brighter. They last longer. They consume less energy. And they're smarter. In fact, the Bi-Xenon lights have an Adaptive Front-light System that turns up to 13 degrees around corners before you do. Smart indeed.

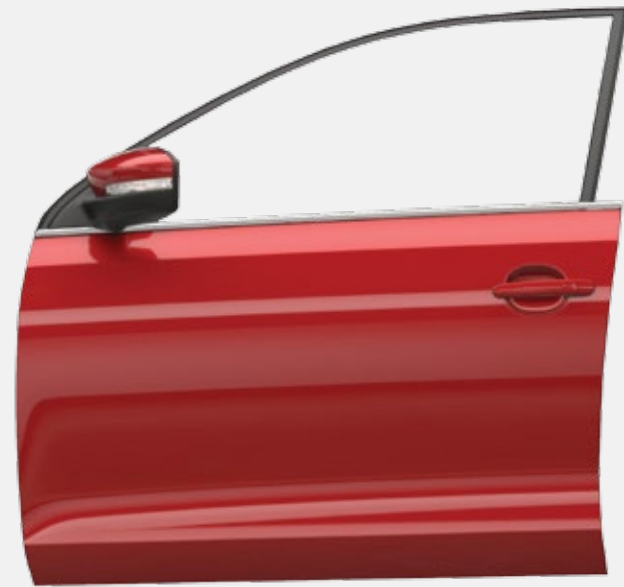
Available side mirrors with integrated turn signals

Turn signals that turn your car into a sleek and modern ride that's ready to take on modern traffic.

Available LED signature daytime running lights

Aside from looking really cool, they come to life quicker, use less energy and last a lot longer than conventional bulbs.

Quality? This is an open-and-shut case.



When it comes to quality, we like to think we go above and beyond. The only problem is that "quality" isn't something you can always see. Take for instance our extremely tough and durable door hinges. You may not notice them, but they will always give you that nice solid "thunk" sound.

Forged-steel door hinges

Forged-steel door hinges offer incredible strength and help ensure your doors will always open and close with precision as when they were new.

Laser seam welding

This superior welding technique fuses metal into a single piece along a continuous seam, instead of spot-welding. It helps make for a more stable, sturdier car. Just the way it should be.

Available soft-touch dashboard

Enjoy the premium look and feel of soft-touch materials throughout the dash.

You belong here.

Get in the zone. The sensationally comfortable, everything you could ever want at your fingertips, zone. The 2017 Jetta helps you stay warm, or cool, and always connected.

Available Wolfsburg Edition Pentastripe interior

Add a sporty flair to the interior of your 2017 Jetta with these distinctive seat coverings, which feature a unique five-stripe design down the middle of each seat.

Available colour multifunction status display*

Get all the important information you need front and centre and at a glance so you can pay close attention to the road ahead.

Available Climatronic® dual-zone electronic climate control

Both driver and passenger can adjust the temperature in increments of 0.5 degrees to enjoy more than a 10-degree difference between the two. Because comfortable passengers mean a comfortable driver.

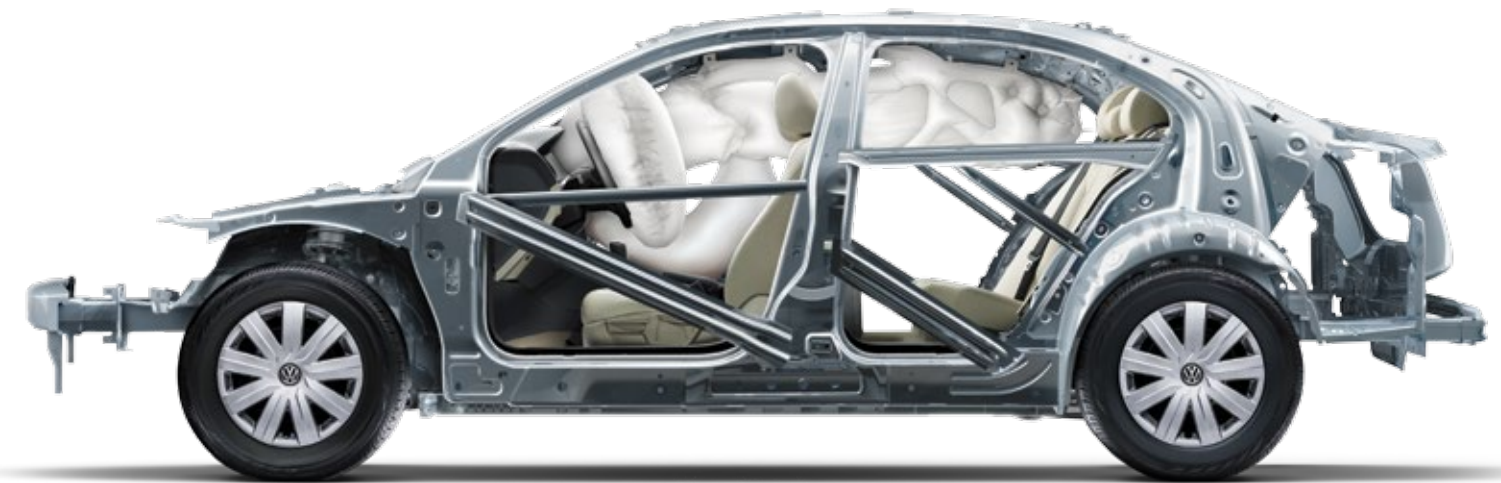
It's like having an invisible sidekick who's really, really safety conscious.

Available Blind Spot Detection with Rear Traffic Alert*

Enjoy an extra level of safety with alerts to tell you when other vehicles are hiding in your blind spot. LED indicators in the side-view mirrors let you know when it's safe to change lanes. Also, the Rear Traffic Alert beeps if something is in your way when backing up.



The 2017 Jetta comes with an amazing suite of safety features built right in. Whether it's distracted drivers ahead, messy truck spray or some of the other ways your safety can be compromised, you can depend on some very smart technology to help keep you safe.



Dramatization!

Available Front Assist with Autonomous Emergency Braking*

It's an added level of safety when cars ahead stop suddenly. The system starts with warning lights and sounds. If necessary, full braking is automatically applied.

Available rain-sensing wipers

Whether it's just a few drops or a downpour, the sensor knows what's happening on your windshield and automatically turns on the wipers at the correct speed or interval. It's ideal when big rigs pass you and throw up spray.

Available Adaptive Cruise Control**

Your speed and distance from cars ahead is automatically regulated without you having to touch gas and brake pedals. You can also specify the distance between you and the car ahead. It's the stress-free way to go for a ride.

*Driver assistance feature. Drivers must continue to perform manual checks before proceeding and pay full attention to the road.
**Not all airbags will deploy, and if multiple airbags do deploy, they will be in various stages of inflating/deflating.
†In emergency situations, it is still necessary to apply the brakes manually.

Standard Wheels



15" steel wheel
TL/TL+

16" Estrade alloy wheel
WOB

17" Lancaster alloy wheel
HL

Exterior & Interior Colours

	Titan Black Doryc cloth	Pentastripe cloth	Titan Black Vienna leather	Ceramique Vienna leather
Pure White	TL/TL+	WOB	HL	HL
Tornado Red	TL+	WOB	HL	HL
Bottle Green Metallic	TL+	WOB	HL	HL
Dark Bronze Metallic	-	WOB	HL	HL
Platinum Grey Metallic	TL/TL+	WOB	HL	HL
Ruby Red Metallic	-	WOB	HL	HL
Silk Blue Metallic	TL/TL+	WOB	HL	HL
White Silver Metallic	TL/TL+	WOB	HL	HL
Deep Black Pearl	TL/TL+	WOB	HL	HL



Volkswagen Original Accessories

Ready for anything.
Custom-tailor your Jetta.



When it comes to accessorizing a Volkswagen, only the best will do. Built to the same quality standards we build our cars and SUVs to, our accessories are custom-fitted to each vehicle and designed to go the distance.

Many accessories can also be included in your lease and financing arrangements, and easily included in your payments to suit your needs.*

Volkswagen Original Accessories are protected by the new vehicle 4-year/80,000 km limited warranty if they're installed prior to vehicle delivery. Or if purchased afterwards, accessories qualify for the balance of the new vehicle warranty coverage or a 1-year/20,000 km limited warranty, whichever is greater.**

01 Monster Mats®
High-quality all-season mats with rounded retention clips.

02 Jetta licence plate frame
This licence plate frame is made from stainless steel and is engineered to look beautiful and last.

03 Splash guards
Designed for a flush contour fit, these splash guards help protect your vehicle against road debris.

04 Rear lip spoiler
Add an elegant touch to your vehicle's lines with a one-piece rear lip spoiler.

05 Exhaust tips – polished metal
These stainless-steel dual-exhaust tips are corrosion resistant and feature an easy slip-over design.

06 Lockable wheel bolts
Help deter thieves with a set of locking wheel bolts.



01



02



03



04



05



06

07 Base carrier bars
Bring along your skis, snowboards, kayak, bikes or cargo boxes with the help of these base carrier bars.[†]

09 Bike holder attachment
Rugged single-bike holder with built-in lock.

11 Kayak holder attachment
Rubber-coated single-kayak holder with tie straps.

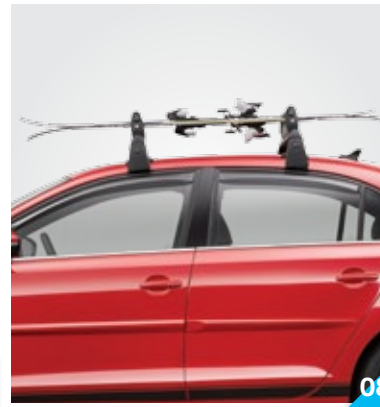
08 Ski, snowboard and wakeboard attachment
Carries up to six pairs of skis or one wakeboard or four snowboards and installs on T-Slot base carrier bars (required and sold separately).^{††}

10 Roof box
Maximize your Volkswagen's storage capacity with an optimized and aerodynamically designed roof box.

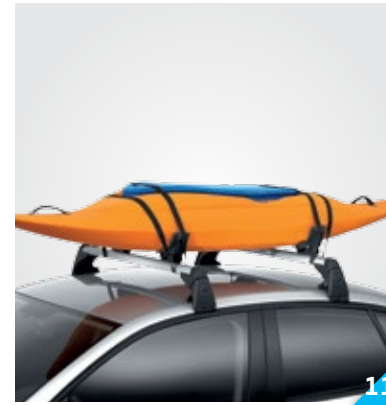
12 Door sill protection trim
Enhances the entry area of your vehicle while protecting the painted door sill from scratches and scuffs.



07



08



11



12



13



14

13 Sport pedal cap set
Add just the right touch of sportiness to your vehicle with these brushed-metal pedal sets. Includes accelerator and brake pedal caps.

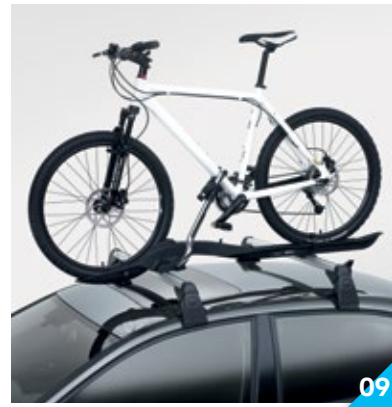
15 15" Aspen winter wheel – brilliant silver
This alloy wheel with five spokes stands out with its elegant, clean design.

17 17" Blade wheel – black and silver
Five-spoke wheel featuring clean lines and diamond-cut accents.

14 Trunk liner
Helps protect your trunk from dirt and spills.

16 16" Corvara wheel
The 16-inch Corvara wheel in brilliant silver features a striking five-spoke design that complements your vehicle.

18 18" Rotary wheel
Give your vehicle a modern race-inspired sporty look with Rotary wheels finished in dark anthracite.



09



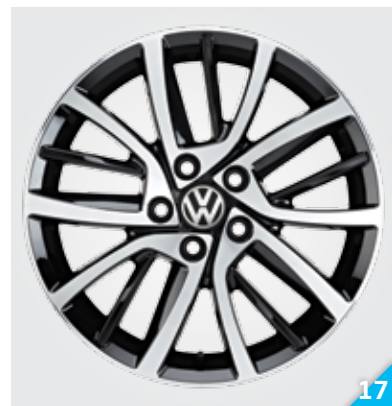
10



15



16



17



18

*Accessories must be dealer installed and approved by Volkswagen Finance. Certain conditions may apply. Contact your approved dealer for full details.
**Limited warranty is supplied by Volkswagen Group Canada Inc.

Availability of accessories shown is subject to change. Accessories may not fit all models.
[†]Separate attachments required to carry different types of items.
^{††}Number of items that can be carried will vary based on the size of each item.

Features

Trendline (TL)

Engine:

- 1.4 TSI® 150 HP, 5-speed manual transmission
- Maximum torque: 184 lb-ft at 1,400–3,500 rpm

Trendline includes:

- 15" steel wheels with full wheel covers and all-season tires
- 4-wheel ABS (Anti-lock Braking System)
- 60/40 split folding rear seats
- 6-way manually adjustable front seats
- Auxiliary input
- Bluetooth® mobile phone connectivity with voice activation control
- Body-coloured bumpers and door handles
- Cardholder
- Chrome grille
- Composition Colour – 5" touchscreen radio with CD player and 1 SD card slot
- Cruise control
- Darkened tail lights
- Diversity antenna
- Driver & front passenger front & side airbags and front & rear Side Curtain Protection®
- Electronic Stability Control (ESC)
- Front and rear disc brakes
- Front and rear floor mats
- Glove box
- Height-adjustable and telescopic steering column
- Interior décor: Black Grained
- LED rear licence plate illumination
- Multi-link rear suspension
- Plastic multifunction steering wheel with Piano Black accents
- Power door locks
- Power windows
- Rear seat head restraints for all seating positions
- Rearview camera
- Sunglasses holder
- Trip computer
- Vehicle immobilizer

Trendline+ (TL+)

Engines:

- 1.4 TSI® 150 HP, 5-speed manual transmission
- 1.4 TSI® 150 HP, 6-speed automatic transmission with Tiptronic®
- Maximum torque: 184 lb-ft at 1,400–3,500 rpm

Includes Trendline plus:

- Alarm system
- Front centre armrest
- Heatable front seats and washer nozzles
- Interior décor: Checkered Titanium
- Manual climate control
- Power adjustable, heatable, body-coloured exterior mirrors
- Remote central locking system
- USB audio input

Optional equipment:

- Engine block heater
- Front fog lights

Connectivity Package

- App-Connect smartphone integration (Android Auto™, Apple CarPlay™, MirrorLink™)
- Composition Media – 6.33" touchscreen infotainment system with proximity sensor, voice control, CD player and 1 SD card slot
- SiriusXM® Satellite Radio

Wolfsburg Edition (WOB)

Engines:

- 1.4 TSI® 150 HP, 5-speed manual transmission
- 1.4 TSI® 150 HP, 6-speed automatic transmission with Tiptronic®
- Maximum torque: 184 lb-ft at 1,400–3,500 rpm

Includes Trendline+ plus:

- 16" Estrade alloy wheels with all-season tires
- 60/40 split folding rear seats with centre armrest and pass-through
- 6-way power driver seat with manual lumbar support
- Allstar concept seats
- App-Connect smartphone integration (Android Auto™, Apple CarPlay™, MirrorLink™)
- Automatic headlights with coming and leaving home function
- Chrome window trim
- Climatronic® dual-zone electronic climate control
- Composition Media – 6.33" touchscreen infotainment system with proximity sensor, voice control, CD player, 6 speakers and 1 SD card slot
- Cooled glove box
- Front and rear reading lights
- Interior décor: Two-Tone Checkered Black with Chrome Accent
- KESSY – keyless access with push-start button (*replaces cardholder*)
- Leatherette door inserts
- Leather-wrapped multifunction steering wheel, shift knob and handbrake lever with Piano Black accents
- LED signature daytime running lights
- Multifunction trip computer
- Power adjustable, heatable, body-coloured exterior mirrors with turn signals
- Power sunroof
- Rain-sensing wipers
- Rear spoiler
- SiriusXM® Satellite Radio
- Soft-touch dashboard
- Wolfsburg Edition badge

Optional equipment:

- Engine block heater
- Front fog lights

Highline (HL)

Engine:

- 1.8 TSI® 170 HP, 6-speed automatic transmission with Tiptronic®
- Maximum torque: 184 lb-ft at 1,500–4,750 rpm

Includes Wolfsburg Edition plus:

- 17" Lancaster alloy wheels with all-season tires
- Ambient interior lighting
- Blind Spot Detection with Rear Traffic Alert
- Front fog lights
- HomeLink®
- Interior décor: Iridium Brushed
- Leather seating surfaces
- Piano Black accent surrounds for instrument cluster, gear shifter and radio

Removes rear spoiler and Wolfsburg Edition badge

Optional equipment:

- Engine block heater

Technology Package

- Adaptive Cruise Control
- Bi-Xenon headlights with Adaptive Front-light System (AFS)
- Discover Media – 6.33" touchscreen infotainment system with proximity sensor, voice control, CD player, satellite navigation and 2 SD card slots
- Fender® Premium Audio System – 8 speakers plus subwoofer
- Front Assist with Autonomous Emergency Braking



© 2016 Volkswagen Canada. Features noted as available are available in optional packages or on higher trimlines. Items, specifications, availability, standard features, options, fabrics and colours are subject to change without notice. Volkswagen Canada is not responsible for errors in typography or photography. Some features may be unavailable when your vehicle is built or available at extra cost. Although we endeavour to ensure that the information is accurate, as errors may occur from time to time, customers should contact their local Volkswagen dealer for details. Tires are supplied and warranted by their manufacturer. The vehicle is sold equipped with four all-season tires. However, please remember that the use of winter tires may be mandatory in your province or territory. Airbags are supplemental restraints only and will not deploy under all accident scenarios. Always use safety belts and seat children only in the rear seats, using restraint systems appropriate for their size and age. The navigation system depends upon signals from the GPS network and is designed to provide you with suggested routes only. Discrepancies may occur between the mapping and the actual location due to changes in street names, construction or other road system changes which are beyond the control of Volkswagen Canada. Please rely on your individual judgment in determining whether or not to follow a suggested navigation route. Fuel consumption ratings are estimates based on Natural Resources Canada's (NRCAN) fuel consumption criteria and testing methods for 2017 model year vehicles and are provided for comparison purposes only. Please note that comparisons to seemingly similar vehicles pre-2015 model year will show discrepancies due to the difference in NRCAN approved calculation methods for 2014 model year and older vehicles. Please refer to NRCAN's Fuel Consumption Guide 2017 for estimated fuel consumption figures. Actual fuel consumption will vary based on driving conditions, driver habits and the vehicle's condition, weight carried and additional equipment. "Jetta", "Climatronic", "TSI", "Trendline", "Wolfsburg Edition", "Highline", "Volkswagen" and the Volkswagen logo are registered trademarks of Volkswagen AG. "Monster Mats" and "Side Curtain Protection" are registered trademarks of Volkswagen Group Canada Inc. The Bluetooth word mark and logos are registered trademarks of Bluetooth SIG, Inc. "SiriusXM", the SiriusXM logo, channel names and logos are trademarks of Sirius XM Radio Inc. and are used under licence. "Fender" is a registered trademark of Fender Musical Instruments Corporation. "Tiptronic" is a registered trademark of Dr. Ing. h.c. F. Porsche AG. "HomeLink" is a registered trademark of Johnson Controls Technology Company. "Android Auto" and "Google" are trademarks of Google Inc. "CarPlay" and "Apple" are trademarks of Apple Inc. "MirrorLink" is a trademark of Car Connectivity Consortium LLC. For further information regarding any Volkswagen model, please call 1-800 DRIVE VW or just look us up at vw.ca. Before we sign off, drive responsibly and obey the rules of the road. Version date: April 1, 2017.