

# Citroën Care for Car and Driver

Across the UK, a network of 250 Citroën Dealers are equipped and trained to meet the needs of today's motorists, each with a team of technicians skilled in the care and maintenance of the New Citroën C8 and using only genuine Citroën parts. Each can also offer a selection of finance packages to suit the private and business purchaser. Elect 3 Personal Contract Purchase is specifically designed to offer flexibility and to match the motoring needs to the budget of the retail customer.

## Citroën Contract Motoring

For business users, Citroën Contract Motoring is able to offer a wide range of funding facilities to suit your specific requirements. Our aim is to help you through the maze of business vehicle funding by keeping things as simple as possible, whilst giving you access to the most tax efficient solution for your business.

So whether you're looking to own the car at the end of your agreement, or prefer to simply use it and then return it, Citroën Contract Motoring has a business funding solution you'll approve of.

For full details of all Citroën Financial Services and Citroën Contract Motoring funding facilities, simply contact your Citroën Dealer. Offer subject to status and to over 18's only. A guarantee may

be required. Written quotations on request from Citroën Contract Motoring, Quadrant House, Princess Way, Redhill, Surrey RH1 1QA.

## Citroën Fleet and Business Sales

All Citroën Dealers are dedicated to meeting the specialist needs of both the fleet and business buyer. Their comprehensive service can include advice on important business vehicle decisions, such as alternative acquisition methods, disposal of existing cars and vans, priority servicing and much more.

In short, their expertise aims to provide a 'total transport solution' for all your fleet or business vehicle needs. If you would like to contact Citroën direct for further information, please call Citroën Fleet Connect on 08457 940 940. Or look us up on the world wide web at:

<http://www.citroen.co.uk/fleet>

## Citroën Assist

Whilst Citroën cars are engineered for maximum reliability, you might become stranded through circumstances outside your control. In response to a free telephone call, Citroën Assist brings rapid expert roadside assistance to you in an emergency. It comes free of charge for a full year and operates 24 hours a

day in all parts of the UK. Services include nationwide recovery for both car and passengers, a home call service, replacement vehicle, hotel accommodation and vehicle storage if required. Alongside UK cover, Citroën Assist also offers a comprehensive European service.

## Comprehensive Warranty

Every new Citroën car offers the benefit of a 3 year\* warranty package, plus a 12 year anti-corrosion\*\* warranty and a 3 year paint warranty.

## Citroën Insurance

Citroën Insurance is as thoughtfully designed as your car and provides real value for money exclusively to Citroën

owners. Instant cover is available over the telephone, with convenient instalment options (subject to status). Policies provide 24 hour accident recovery, with all repairs carried out by a Citroën approved repairer, guaranteed for a full three years. For an immediate quote, call 0870 024 2725.

## Internet

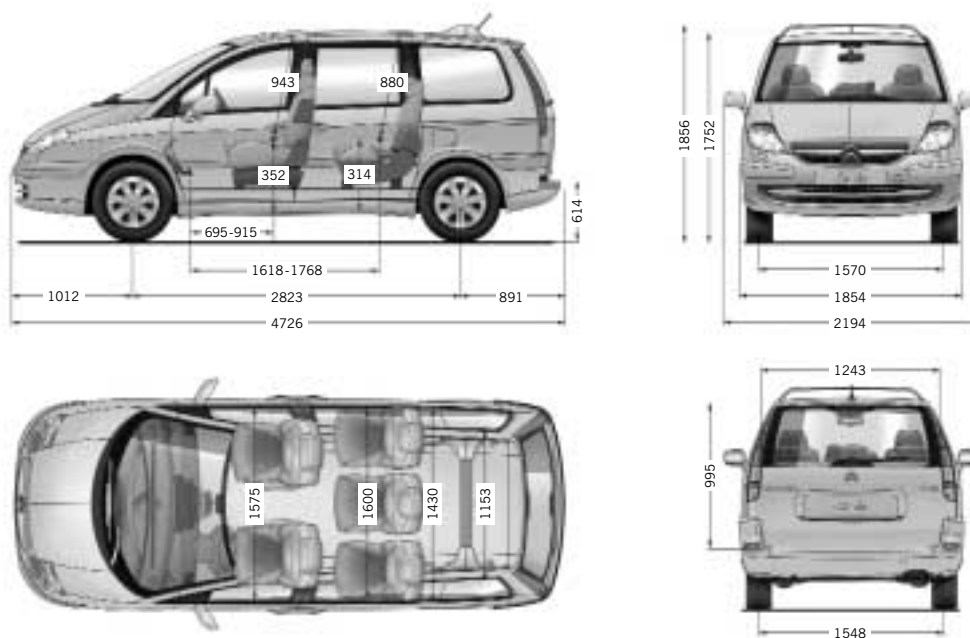
The Citroën website contains full information on all Citroën products and offers available in the UK.

The site address is:  
<http://www.citroen.co.uk>

\*2 years' manufacturer's warranty. No-fee customer option of 1 year's Dealer provided extended warranty, only on cars sourced from Citroën UK Limited.

\*\* Against all internal to external perforation to bodywork or underbody on condition the car undergoes an inspection by a Citroën franchised Dealer every two years from its fourth anniversary.

Full details available on request.



All measurements in millimetres



[www.citroen.co.uk](http://www.citroen.co.uk)

K9190

Citroën UK Limited, 221 Bath Road, Slough, SL1 4BA

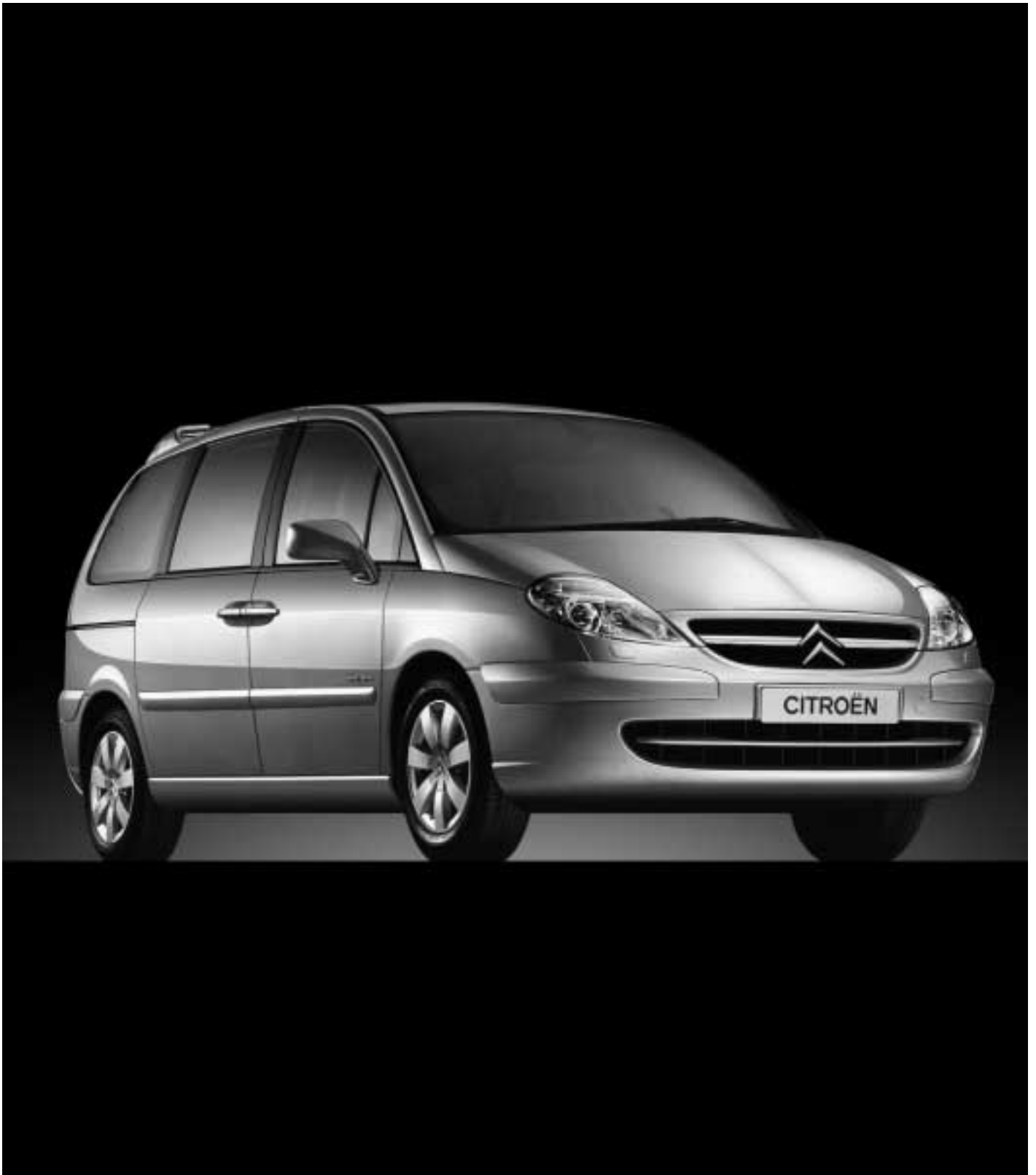
NOTE: Every endeavour has been made to ensure that the information and details contained in this specification leaflet were accurate at the time of going to press October 2002. This is a preview brochure containing advance and provisional information. Definitive specifications will be confirmed closer to the launch date January 2003. Every effort will be made to bring this leaflet up to date, but in order to avoid any misunderstandings please consult your Dealer.

THE NEW  
**CITROËN C8**

EQUIPMENT & TECHNICAL  
SPECIFICATION

ADVANCE INFORMATION

OCTOBER 2002



## Engine Availability

|  | LX | SX | Exclusive | Exclusive Captain Chair |
|--|----|----|-----------|-------------------------|
| 2.0i 16V (138hp)                           | ●  |    |           |                         |
| 2.0i 16V (138hp) Auto                      |    | ●  |           |                         |
| 2.2i 16V (160hp)                           |    |    | ●         | ●                       |
| 2.0HDi 16V (110hp) with particulate filter | ●  | ●  |           |                         |
| 2.2HDi 16V (130hp) with particulate filter |    | ●  | ●         | ●                       |

## Style

### Exterior

|   |   |   |   |   |
|---|---|---|---|---|
| Body colour painted bumper skirts   | ● | ● | ● | ● |
| Body colour painted bumpers and side rubbing strips   |   | ● | ● | ● |
| Body colour painted door mirrors  | ● | ● | ● | ● |
| 'Chrome' effect bar on front grille   | ● | ● | ● | ● |
| 'Aluminium' effect 2-in-1 door handles  | ● | ● | ● | ● |
| 'Aluminium' effect tailgate handle  | ● | ● | ● | ● |
| 'Aluminium' effect rear spoiler with integrated roof bars   |   |   | ● | ● |
| Blackout tailgate window  | ● | ● | ● | ● |
| Blackout side windows (row 2 & 3)   |   |   | ○ | ● |
| VIP pack: blackout side windows, 'aluminium' effect rear spoiler with integrated roof bars and rear parking sensors |   | ○ |   |   |
| Vertical slimline rear light cluster shape  | ● | ● | ● | ● |
| 'Flag' type door mirrors with integrated side repeaters   | ● | ● | ● | ● |
| 15" two tone alloy wheels with locking wheel nuts   | ◇ | ◇ | ● | ● |
| 16" alloy wheels (requires tyre upgrade)  | ◇ | ◇ | ◇ | ◇ |

### Interior

|   |     |             |     |     |
|---|-----|-------------|-----|-----|
| 'Aluminium' effect inserts on dashboard               | ●   | ●           | ●   | ●   |
| 'Aluminium' effect inserts on door panels row 1/row 2 | ●/- | ●/●         | ●/● | ●/● |
| 'Aluminium' effect dial surrounds                     | ●   | ●           | ●   | ●   |
| 'Aluminium' effect air conditioning surround          | ●   | ●           | ●   | ●   |
| 'Aluminium' effect head restraint bars                |     |             | ●   | ●   |
| 'Aluminium' effect interior door handles              | ●   | ●           | ●   | ●   |
| Leather steering wheel                                |     |             | ●   | ●   |
| 'Chrome' effect gear lever knob insert                | ●   | ●<br>Manual |     |     |
| Leather gear lever knob and gaiter                    |     |             | ●   | ●   |
| Leather gear lever                                    |     | ●<br>Auto   |     |     |

## Comfort & Convenience

### Accessibility

|  |   |   |   |   |
|--|---|---|---|---|
| Twin rear sliding side doors                                   | ● |   |   |   |
| Electric twin rear sliding side doors with anti-pinch function |   | ● | ● | ● |

### Cabin climate control

|   |   |   |   |   |
|---|---|---|---|---|
| Automatic digital dual-zone air conditioning:<br>. separate temperature control for driver and front passenger<br>. side air vents for passengers in row 2<br>. floor air vents for passengers in row 2<br>. sunlight sensor  | ● |   |   |   |
| Automatic digital tri-zone air conditioning:<br>. separate temperature control for driver and front passenger<br>. side air vents for passengers in row 2 with separate air flow control<br>. floor air vents for passengers in row 2<br>. side air vents for passengers in row 3<br>. floor air vents for passengers in row 2<br>. sunlight sensor |   | ● | ● | ● |
| Pollen filter   | ● | ● | ● | ● |
| 2sq. metre heat-reflecting windscreen   | ● | ● | ● | ● |
| Three electric slide/tilt sunroofs with sunblinds   |   | ○ | ○ | ● |
| Electric front windows with one-touch operation and anti-pinch  | ● | ● | ● | ● |
| Electric front windows with 60 second operating period after the ignition is switched off   | ● | ● | ● | ● |
| Electric middle windows with one-touch operation and anti-pinch   |   | ● | ● | ● |
| Electric middle windows with 60 second operating period after the ignition is switched off and if rear sliding side doors remain unopened   |   | ● | ● | ● |

|                                     |   |   |   |   |
|-------------------------------------|---|---|---|---|
| Opening rear quarter lights         | ● | ● | ● | ● |
| Retractable middle window sunblinds |   | ● | ● | ● |
| Retractable quarter light sunblinds |   | ● | ● | ● |
| Retractable tailgate sunblind       |   | ● | ● | ● |

### Special comfort & convenience features

|  |   |   |   |   |
|--|---|---|---|---|
| Additional folding rear view mirror for child surveillance                                   |   | ● | ● | ● |
| 12 volt socket in the rear   |   | ● | ● | ● |
| 12 volt socket on bottom of driver's seat  |   | ● | ● | ● |
| Driver's and front passenger's sunvisors with covered courtesy mirrors                       | ● |   |   |   |
| Driver's and front passenger's sunvisors with covered and illuminated courtesy mirrors       |   | ● | ● | ● |
| Front reading lights   | ● | ● | ● | ● |
| Row 2 courtesy light   | ● | ● | ● | ● |
| Row 2 reading lights   | ● | ● | ● | ● |
| Row 3 courtesy light   | ● | ● | ● | ● |
| Row 3 reading lights   |   | ● | ● | ● |
| Interior lights come on when vehicle is unlocked and remain on until ignition is switched on | ● | ● | ● | ● |
| Footwell lighting  |   | ● | ● | ● |

## Seating

|  |   |   |   |   |
|--|---|---|---|---|
| Five individual, sliding, foldable and removable rear seats  | ● | ● | ● |   |
| Four individual, sliding, foldable and removable rear Captain Chair's seats with adjustable and folding armrests |   |   |   | ● |
| 'Pic' blue/beige cloth upholstery  | ● |   |   |   |
| 'Cashmere' velour upholstery   |   | ● |   |   |
| Beige full Alcantara® upholstery   |   |   | ● |   |
| Beige full leather upholstery  |   |   |   | ● |

### Front

|  |   |   |   |   |
|--|---|---|---|---|
| Driver's seat height adjustment  | ● | ● | ● | ● |
| Driver's seat lumbar adjustment  |   | ● | ● | ● |
| Swivelling front seats   |   | ● | ● | ● |
| Electric front seats with two programmable memory settings for driver's seat height, sliding, reclining adjustments and front passenger's seat sliding and reclining adjustments |   |   | ● | ● |
| Heated front seats with three settings   |   |   | ● | ● |
| Adjustable and folding front seat armrests   |   | ● | ● | ● |
| Height and tilt adjustable front head restraints   | ● | ● | ● | ● |

### Rear

|   |   |   |   |   |
|---|---|---|---|---|
| Interchangeable outer rear seats on row 2 & 3           | ● | ● | ● | ● |
| Isofix child seat anchorage points on outer row 2 seats | ● | ● | ● | ● |
| Reclining backrests on all rear seats                   | ● | ● | ● | ● |
| Third row bench seat for three passengers               | ◇ | ◇ |   |   |
| Quickfix® instant anchorage system                      | ● | ● | ● | ● |
| Retractable head restraints on all rear seats           | ● | ● | ● | ● |

## Storage

### Front passengers

|  |   |   |   |   |
|--|---|---|---|---|
| Twin dashboard mounted lidded storage compartments for driver and front passenger, with integrated CD's holder on front passenger's side | ● | ● | ● | ● |
| Illuminated and lockable front passenger glovebox  | ● | ● | ● | ● |
| Multi-function drawer at the bottom of the centre console, with 12V socket, can holder and ashtray                                       | ● | ● | ● | ● |
| Air conditioned storage compartment at the bottom of the centre console including three can holders                                      | ● | ● | ● | ● |
| Storage compartment under steering column  | ● | ● | ● | ● |
| Storage bins under front passenger's seat  |   | ● | ● | ● |
| Storage bins under driver's seat   |   |   | ● | ● |
| Front door storage compartments with bottle and can holders  | ● | ● | ● | ● |

|  | LX | SX             | Exclusive | Exclusive Captain Chair |
|--|----|----------------|-----------|-------------------------|
| <b>Rear passengers</b>   |    |                |           |                         |
| Front seat back pockets  | ●  | ●              | ●         | ●                       |
| Rear door storage compartments with bottle, can holders and A4 size documents  | ●  | ●              | ●         | ●                       |
| Aircraft style tables on back of front seats   |    | ●              | ●         | ●                       |
| Fold down table with integrated cup holders on back of row 2 seats   | ●  | ●              | ●         | ●                       |
| Fold down table with integrated cup holders on back of row 3 seats   | ●  | ●              | ●         | ●                       |
| <b>Boot</b>  |    |                |           |                         |
| Boot net   |    | ●              | ●         | ●                       |
| Rear parcelshelf   | ●  | ●              | ●         | ●                       |
| Six lashing eyes in the boot   | ●  | ●              | ●         | ●                       |
| Storage compartment in the boot  | ●  |                |           |                         |
| Retractable passenger cabin safety net   | ◇  | ◇              | ◇         | ◇                       |
| <b>Driving Technology &amp; Information Systems</b>  |    |                |           |                         |
| Variable power assisted steering   | ●  | ●              | ●         | ●                       |
| Height and tilt adjustable 4-spoke steering wheel  | ●  | ●              | ●         | ●                       |
| Dashboard mounted gear lever   | ●  | ●              | ●         | ●                       |
| Cruise control   |    |                | ●         | ●                       |
| Self-programmable audible over-speed warning   | ●  | ●              | ●         | ●                       |
| 3-in-1 glass sphere centre instruments: speedometer, rev counter, fuel level and coolant temperature   | ●  | ●              | ●         | ●                       |
| Multi-function display with on-board trip computer: radio, time, external temperature, date, current fuel consumption, average fuel consumption, distance covered, average speed, range on remaining fuel and warning messages | ●  | ●              | ●         | ●                       |
| Steering wheel mounted multi-function display: maintenance, oil level & warning indicators plus odometer. Includes selected gear display on automatic models   | ●  | ●              | ●         | ●                       |
| Door-ajar warning (driver's and passenger's doors, tailgate and bonnet)  | ●  | ●              | ●         | ●                       |
| <b>Lighting &amp; Visibility</b>   |    |                |           |                         |
| Electrically adjustable and heated door mirrors  | ●  | ●              | ●         | ●                       |
| Automatic retractable door mirrors   |    | ●              | ●         | ●                       |
| Door mirror's position memory  |    | ●              | ●         | ●                       |
| Rear parking sensors   |    | ○ <sup>1</sup> | ●         | ●                       |
| Electrochrome rear view mirror   |    | ●              | ●         | ●                       |
| 'Butterfly' style windscreen wipers with integrated washer jets  | ●  | ●              | ●         | ●                       |
| Speed sensitive windscreen wipers  | ●  |                |           |                         |
| Automatic rain sensitive windscreen wipers   |    | ●              | ●         | ●                       |
| Automatic rear tailgate wiper (when reverse gear is engaged and windscreen wipers are on)  | ●  | ●              | ●         | ●                       |
| Automatic illumination of driving lights (light and front wiper movement sensing)  |    | ●              | ●         | ●                       |
| Guide-me-home headlamps: headlamps will stay on for 30 seconds or until vehicle is locked  |    | ●              | ●         | ●                       |
| Xenon headlamps for main and dipped beam   |    |                | ●         | ●                       |
| Headlamp washer jets   |    |                | ●         | ●                       |
| Integrated front fog lights  | ●  | ●              | ●         | ●                       |
| High level third brake light   | ●  | ●              | ●         | ●                       |
| Twin rear fog and reversing lights   | ●  | ●              | ●         | ●                       |
| <b>In-Car Entertainment/Communication</b>  |    |                |           |                         |
| Anti-theft RD3 stereo radio/CD player with 8 speakers and steering mounted controls  | ●  | ●              | ●         | ●                       |
| Speed sensitive stereo volume  | ●  | ●              | ●         | ●                       |
| Anti-theft RT3 RDS stereo radio/CD player/integrated phone with colour-plus satellite navigation and 6 CD autochanger (central instrument sphere replaced by 7" colour screen)   |    | ○              | ○         | ○                       |
| Roof mounted rear video screen <sup>2</sup>  |    | ◇              | ◇         |                         |

## Active & Passive Safety

|   | LX | SX               | Exclusive | Exclusive Captain Chair |
|---|----|------------------|-----------|-------------------------|
| ABS with Electronic Brakeforce Distribution (EBD)                                       | ●  | ●                | ●         | ●                       |
| Emergency Braking Assistance (EBA)  | ●  | ●                | ●         | ●                       |
| Electronic Stability Programme (ESP) and traction control                               | ○  | ●/○ <sup>3</sup> | ●         | ●                       |
| Adaptative driver's and front passenger's airbags                                       | ●  | ●                | ●         | ●                       |
| Front passenger's airbag cut-off device   | ●  | ●                | ●         | ●                       |
| Front lateral airbags   | ●  | ●                | ●         | ●                       |
| Side window airbags for driver's, front passenger's, middle and rear passenger's        | ●  | ●                | ●         | ●                       |
| Front seat belt pre-tensioners with force-limiters                                      | ●  | ●                | ●         | ●                       |
| Seat belt pre-tensioners with force-limiters on two outer middle seats                  | ●  | ●                | ●         | ●                       |
| Height adjustable front seat's and outer middle seat's belts                            | ●  | ●                | ●         | ●                       |
| 3-point inertia reel seat belts on central row 2 seat                                   | ●  | ●                | ●         |                         |
| Automatic activation of hazard warning lights (in case of rapid deceleration or impact) | ●  | ●                | ●         | ●                       |
| Tyre pressure warning   |    |                  | ●         | ●                       |
| Energy absorbing side impact protection   | ●  | ●                | ●         | ●                       |
| Fuel cut-off device   | ●  | ●                | ●         | ●                       |

## Security & Locking

|   |   |   |   |   |
|---|---|---|---|---|
| High frequency remote control central locking with deadlocks and dashboard mounted button   | ● | ● | ● | ● |
| High security locks   | ● | ● | ● | ● |
| Multi-function plip remote control with folding ignition key: locking, locating, unlocking and window closing/partial opening   | ● |   |   |   |
| Two Multi-function plip remote controls with folding ignition key: locking, locating, unlocking, window closing/partial opening and separate opening of electric twin rear sliding side doors |   | ● | ● | ● |
| Electric child lock for rear sliding side doors and middle window with dashboard mounted indicator (include rear sunroofs if specified)   | ● | ● | ● | ● |
| Electronic transponder immobiliser  | ● | ● | ● | ● |
| Anti-theft alarm (perimetric and volumetric)  |   | ● | ● | ● |
| Automatic re-locking after 30 seconds (when using the plip - if the doors and boot remain unopened)   | ● | ● | ● | ● |
| Programmable automatic door locking (when car in motion)  | ● | ● | ● | ● |
| Automatic tailgate locking (when car in motion)   | ● | ● | ● | ● |

## Option & Accessory Summary

|  |   |                  |   |   |
|--|---|------------------|---|---|
| Electronic Stability Programme (ESP) and traction control  | ○ | ●/○ <sup>3</sup> | ● | ● |
| Three electric slide/tilt sunroofs with sunblinds  |   | ○                | ○ | ● |
| Metallic/Pearlescent paint   | ○ | ○                | ○ | ○ |
| Blackout side windows (row 2 & 3)  |   |                  | ○ | ● |
| VIP pack: blackout side windows, 'aluminium' effect rear spoiler with integrated roof bars and rear parking sensors  |   | ○                |   |   |
| 15" two tone alloy wheels with locking wheel nuts  | ◇ | ◇                | ● | ● |
| 16" alloy wheels (requires tyre upgrade)   | ◇ | ◇                | ◇ | ◇ |
| Third row bench seat for three passengers  | ◇ | ◇                |   |   |
| Retractable passenger cabin safety net   | ◇ | ◇                | ◇ | ◇ |
| Anti-theft RT3 RDS stereo radio/CD player/integrated phone with colour-plus satellite navigation and 6 CD autochanger (central instrument sphere replaced by 7" colour screen) |   | ○                | ○ | ○ |
| Roof mounted rear video screen <sup>2</sup>  |   | ◇                | ◇ |   |

- Standard equipment ○ Optional cost equipment
- ◇ Available as a cost accessory

<sup>1</sup> Part of VIP pack.

<sup>2</sup> Not available when sunroof is specified.

<sup>3</sup> Standard on 2.0i 16V Automatic and 2.2Hdi 16V Manual models. Option on 2.0Hdi 16V Manual model.

## Engine

|                            | 2.0i 16V                             | 2.0i 16V Auto | 2.2i 16V  |
|----------------------------|--------------------------------------|---------------|-----------|
| Capacity (cc)              | 1997                                 | 1997          | 2230      |
| Cylinders                  | 4 in line                            | 4 in line     | 4 in line |
| Bore and stroke (mm)       | 85.0x88.0                            | 85.0x88.0     | 86.0x96.0 |
| Max power DIN (hp/rpm)     | 138/6000                             | 138/6000      | 160/5650  |
| Max torque DIN (lb.ft/rpm) | 140/4100                             | 140/4100      | 160/3900  |
| Fuel system                | Multipoint electronic fuel injection |               |           |

## Transmission

|   |                  |     |                  |
|---|------------------|-----|------------------|
| Five speed manual                               | ●                |     | ●                |
| Four speed sequential auto-adaptative automatic |                  | ●   |                  |
| Clutch type                                     | Dry single plate | N/a | Dry single plate |

## Performance

|                       |      |      |      |
|-----------------------|------|------|------|
| Max speed (mph)       | 115  | 114  | 122  |
| 0-62 mph (secs)       | 11.2 | 13   | 10.7 |
| Standing 1000m (secs) | 32.8 | 35.4 | 32.1 |

N.B. All figures driver alone

## Economy Litres/100km (mpg)

|             |             |             |             |
|-------------|-------------|-------------|-------------|
| Urban cycle | 12.3 (23.0) | 13.7 (20.6) | 12.9 (21.9) |
| Extra urban | 7.3 (38.7)  | 7.3 (38.7)  | 7.8 (36.2)  |
| Combined    | 9.1 (31.0)  | 9.6 (29.4)  | 9.7 (29.1)  |

N.B. Official Government test fuel consumption figures

## CO<sub>2</sub> Emissions (g/km)

|  |     |     |     |
|--|-----|-----|-----|
|  | 218 | 225 | 231 |
|--|-----|-----|-----|

## Wheels & Tyres

|  |   |   |   |
|--|---|---|---|
| 15" wheels with 205/65 R15 tyres       | ● | ● |   |
| 15" alloy wheels with 215/65 R15 tyres |   |   | ● |

## Weights (kg)

|                          |      |      |      |
|--------------------------|------|------|------|
| Unladen weight           | 1612 | 1642 | 1648 |
| Max laden weight         | 2380 | 2400 | 2400 |
| Max towing weight braked | 1775 | 1675 | 1775 |
| Max tow hitch download   | 76   | 76   | 76   |
| Max roof rack load       | 100  | 100  | 100  |

## Brakes

Servo assisted hydraulic dual circuit brakes. Front and rear discs. ABS with EBD and Emergency Braking Assistance (EBA)

## Steering

|                                  |     |
|----------------------------------|-----|
| Number of turns lock to lock     | TBC |
| Turning circle between kerbs (m) | TBC |

## Suspension

Front and rear hydraulic dampers with anti-roll bars.  
Front pseudo MacPherson strut/coil springs. Rear independent trailing arms/coiled springs.

## Fuel Tank Capacity Litres (gallons)

80 (17.6)

## Exterior Dimensions (mm)

|           |      |
|-----------|------|
| Length    | 4726 |
| Width     | 1850 |
| Height    | 1752 |
| Wheelbase | 2823 |

## Boot Volumes (dm<sup>3</sup>)

|   |           |
|---|-----------|
| 3 rows of seats in place - at top of back of seat level - min/max | 225 - 480 |
| 2 rows of seats in place - at top of back of seat level - max     | 1160      |
| 1 row of seats in place - at top of back of seat level - max      | 2264      |
| 1 row of seats in place - up to roof level - max                  | 2948      |

## Engine

|                            | 2.0HDi 16V                            | 2.2HDi 16V |
|----------------------------|---------------------------------------|------------|
| Capacity (cc)              | 1997                                  | 2179       |
| Cylinders                  | 4 in line                             | 4 in line  |
| Bore and stroke (mm)       | 85.0x88.0                             | 85.0x96.0  |
| Max power DIN (hp/rpm)     | 109/4000                              | 130/4000   |
| Max torque DIN (lb.ft/rpm) | 199/1750                              | 232/2000   |
| Fuel system                | High pressure direct Diesel injection |            |

## Transmission

|                   |                  |                  |
|-------------------|------------------|------------------|
| Five speed manual | ●                | ●                |
| Clutch type       | Dry single plate | Dry single plate |

## Performance

|                               |      |      |
|-------------------------------|------|------|
| Max speed (mph)               | 108  | 113  |
| 0-62 mph (secs)               | 13.4 | 12.6 |
| Standing 1000m (secs)         | 35   | 34.1 |
| N.B. All figures driver alone |      |      |

## Economy Litres/100km (mpg)

|  |            |             |
|--|------------|-------------|
| Urban cycle  | 9.4 (30.1) | 10.1 (28.0) |
| Extra urban  | 5.9 (47.9) | 5.9 (47.9)  |
| Combined   | 7.2 (39.2) | 7.4 (38.2)  |
| N.B. Official Government test fuel consumption figures |            |             |

## CO<sub>2</sub> Emissions (g/km)

|  |     |     |
|--|-----|-----|
|  | 189 | 199 |
|--|-----|-----|

## Wheels & Tyres

|  |   |  |
|--|---|--|
| 15" wheels with 215/65 R15 tyres       | ● | ● (SX)                                 |
| 15" alloy wheels with 215/65 R15 tyres |   | ● (Exclusive, Exclusive Captain Chair) |

## Weights (kg)

|                          |      |      |
|--------------------------|------|------|
| Unladen weight           | 1710 | 1750 |
| Max laden weight         | 2505 | 2505 |
| Max towing weight braked | 1850 | 1850 |
| Max tow hitch download   | 76   | 76   |
| Max roof rack load       | 100  | 100  |

## Brakes

Servo assisted hydraulic dual circuit brakes. Front and rear discs. ABS with EBD and Emergency Braking Assistance (EBA)

## Steering

|                                  |     |
|----------------------------------|-----|
| Number of turns lock to lock     | TBC |
| Turning circle between kerbs (m) | TBC |

## Suspension

Front and rear hydraulic dampers with anti-roll bars.  
 Front pseudo MacPherson strut/coil springs. Rear independent trailing arms/coiled springs.

## Fuel Tank Capacity Litres (gallons)

80 (17.6)

## Exterior Dimensions (mm)

|           |      |
|-----------|------|
| Length    | 4726 |
| Width     | 1850 |
| Height    | 1752 |
| Wheelbase | 2823 |

## Boot Volumes (dm<sup>3</sup>)

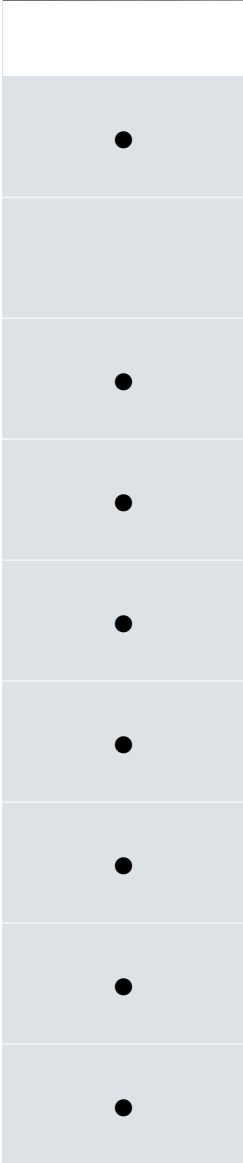
|   |           |
|---|-----------|
| 3 rows of seats in place - at top of back of seat level - min/max | 225 - 480 |
| 2 rows of seats in place - at top of back of seat level - max     | 1160      |
| 1 row of seats in place - at top of back of seat level - max      | 2264      |
| 1 row of seats in place - up to roof level - max                  | 2948      |



# COLOUR & TRIM AVAILABILITY

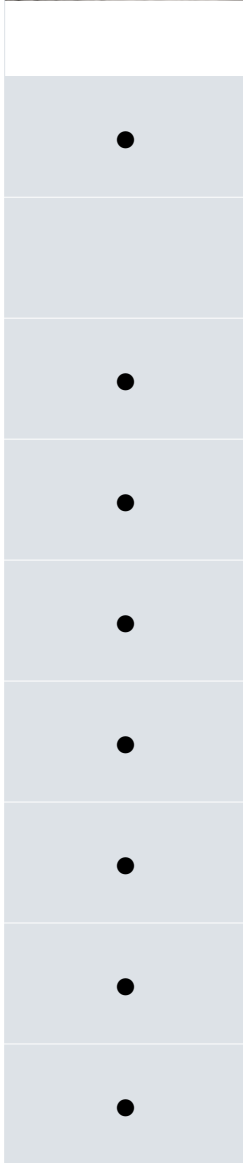
## SX

'Cashmere'  
velour upholstery



## Exclusive

Beige full  
Alcantara® upholstery



## Exclusive Captain Chair

Beige full  
leather upholstery

