

Citroën Care for Car and Driver

Across the UK, a network of 250 Citroën Dealers are equipped and trained to meet the needs of today's motorists, each with a team of technicians skilled in the care and maintenance of the Citroën Xsara Picasso and using only genuine Citroën parts. Each can also offer a selection of finance packages to suit the private and business purchaser. Contract Hire, Lease Purchase and Finance Lease are available to the business user, through Citroën Contract Motoring, whilst Elect 3 Personal Contract Purchase is specifically designed to offer flexibility and to match the motoring needs to the budget of the retail customer.

Citroën Elect 3

With the Elect 3 Personal Contract Purchase Scheme, you decide on the model which best suits your motoring needs, then set your preferred contract period of 24 or 36 months and anticipated annual mileage. At the end of the contract period you have the added flexibility of part exchanging the car for another new Citroën, purchasing it or simply returning it to the Dealer. By choosing Elect 3 you can drive a new Citroën every two or three years.

Citroën Fleet and Business Sales

All Citroën Dealers are dedicated to meeting the specialist needs of both the fleet and business buyer. Their comprehensive service can include advice on important business vehicle decisions, such as alternative acquisition methods, disposal of existing cars and vans, priority servicing and much more.

In short, their expertise aims to provide a 'total transport solution' for all your fleet or business vehicle needs. If you would like to contact Citroën direct for further information, please call Citroën Fleet Connect on 08457 940 940. Or look us up on the world wide web at: <http://www.citroen.co.uk/fleet>

Citroën Assist

Whilst Citroën cars are engineered for maximum reliability, you might become stranded through circumstances outside your control. In response to a free telephone call, Citroën Assist brings rapid expert roadside assistance to you in an emergency. It comes free of charge for a full year and operates 24 hours a day in all parts of the UK. Services include nationwide recovery for both

car and passengers, a home call service, replacement vehicle, hotel accommodation and vehicle storage if required. Alongside UK cover, Citroën Assist also offers a comprehensive European service.

Comprehensive Warranty

Every new Citroën car offers the benefit of a 3 year* warranty package, plus a 12 year anti-corrosion** warranty and a 3 year paint warranty.

Citroën Insurance

Citroën Insurance is as thoughtfully designed as your car and provides real value for money exclusively to Citroën

owners. Instant cover is available over the telephone, with convenient instalment options (subject to status). Policies provide 24 hour accident recovery, with all repairs carried out by a Citroën approved repairer, guaranteed for a full three years. For an immediate quote, call 0870 024 2725.

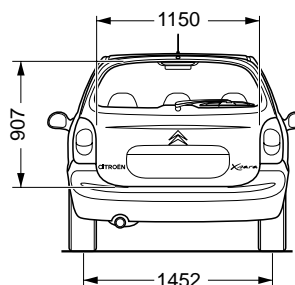
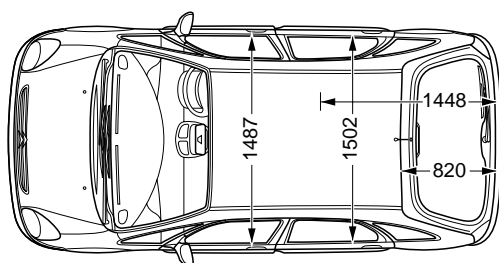
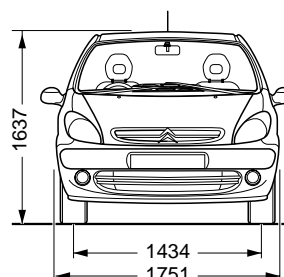
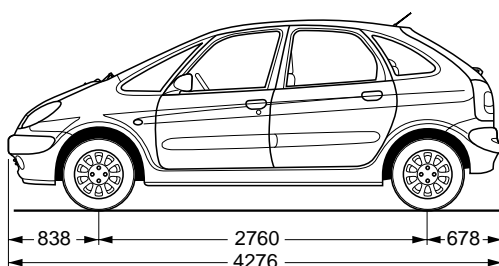
Internet

The Citroën website contains full information on all Citroën products and offers available in the UK. The site address is: <http://www.citroen.co.uk>

*2 years' manufacturer's warranty. No-fee customer option of 1 year's Dealer provided extended warranty, only on cars sourced from Citroën UK Limited.

** Against all internal to external perforation to bodywork or underbody on condition the car undergoes an inspection by a Citroën franchised Dealer every two years from its fourth anniversary.

Full details available on request.



All measurements in millimetres



www.citroen.co.uk

K9269

Citroën UK Limited, 221 Bath Road, Slough, SL1 4BA

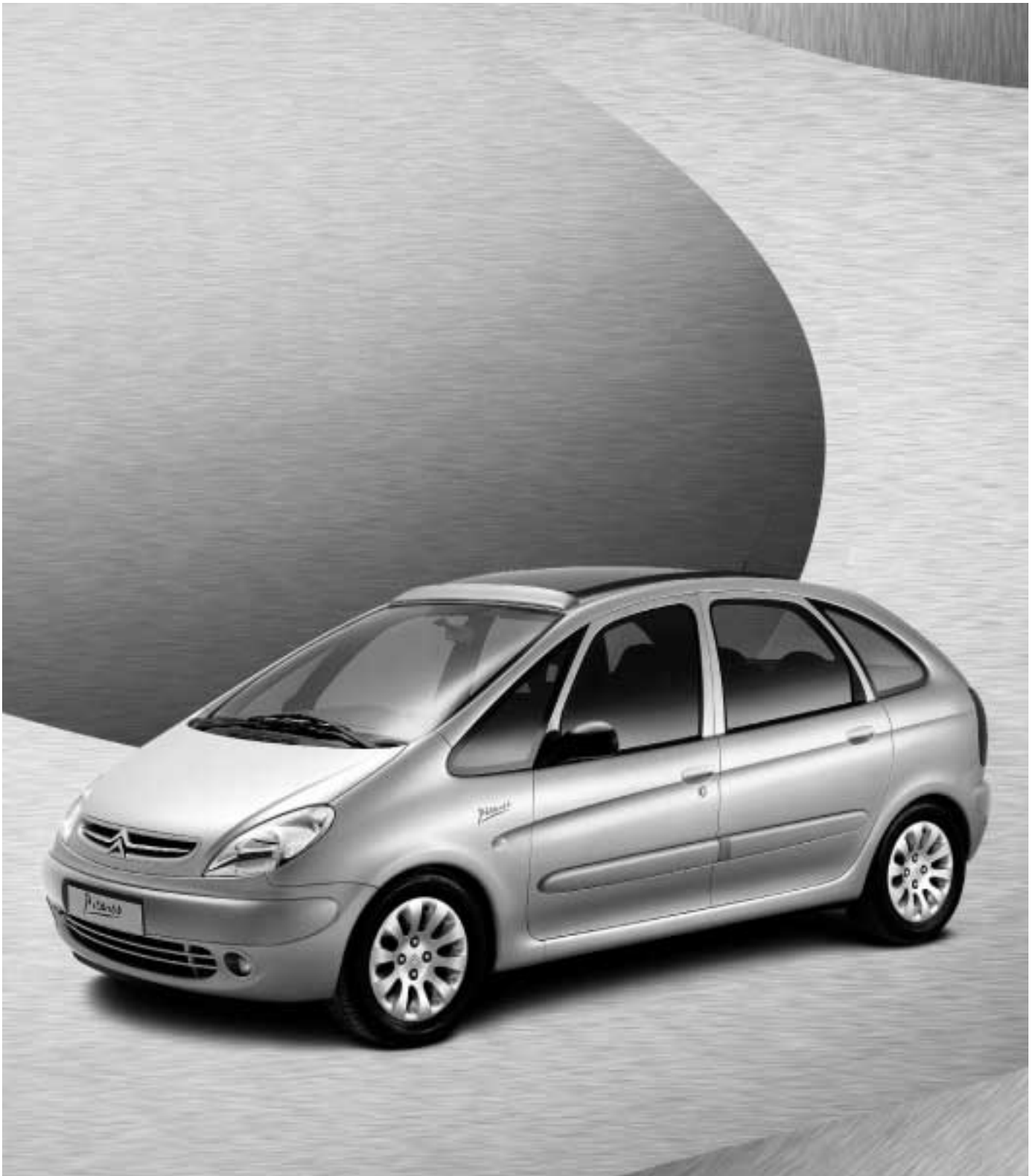
NOTE: Every endeavour has been made to ensure that the information and details contained in this specification leaflet were accurate at the time of going to press January 2003. However the company reserves the right, whilst preserving the essential characteristics of the models described, to introduce at any time modifications, changes of details, equipment or accessories. Every effort will be made to bring this leaflet up to date, but in order to avoid any misunderstandings please consult your Dealer. Specifications of all models refer to cars produced from December 2002.

 **CITROËN XSARA**

Picasso

EQUIPMENT & TECHNICAL
SPECIFICATION

JANUARY 2003



	LX	SX	Exclusive		LX	SX	Exclusive
Engine Availability							
1.6i (95hp)	●	●		Warning signals for:			
1.8i 16V (117hp)		●	●	Keys left in ignition	●	●	●
2.0i 16V (137hp) Auto		●	●	Lights left on	●	●	●
2.0HDi (90hp)	●	●	●	Pre-programmed speed exceeded			●
				Handbrake left on	●	●	●
Safety & Security				Cruise control			●
ABS with Electronic Brakeforce Distribution (EBD)	●	●	●	Satellite Navigation		○ <small>2.0i 16V Auto</small>	○
Electronic Stability Programme (ESP) and traction control ¹		○ <small>2.0i 16V Auto</small>	○ <small>2.0i 16V Auto</small>	Style			
		○ <small>1.8i 16V 2.0HDi</small>	○ <small>1.8i 16V 2.0HDi</small>	Body colour painted bumper skirts	●	●	●
Energy absorbing side impact protection	●	●	●	Body colour painted bumpers and side rubbing strips			●
Driver's, front passenger's and front lateral airbags	●	●	●	Body colour painted door mirrors			●
Fuel cut-off device	●	●	●	Body colour painted door handles			●
Front passenger's airbag cut-off device	●	●	●	Body colour painted rear number plate moulding			●
Front seat belt pre-tensioners with force-limiters	●	●	●	Full width wheel trims	●	●	
Height adjustable front seat belts	●	●	●	'Estoril' 15" alloy wheels (four)			●
Five 3-point inertia reel seat belts	●	●	●	3-speed 'butterfly' style windscreen wipers	●	●	
Elevated seating position for increased visibility and improved lateral protection	●	●	●	Leather steering wheel			●
High tensile steel side protection bars	●	●	●	Metallic/Pearlescent/Black paint	○	○	○
Independent front and rear suspension	●	●	●	In-Car Entertainment			
High frequency remote control central locking with dashboard mounted button	●	●	●	RDS stereo radio/cassette with 6 speakers and steering wheel mounted controls	●		
Transponder immobiliser	●	●	●	RDS stereo radio/CD player with 6 speakers and steering wheel mounted controls		●	●
Locking fuel filler cap	●	●	●	Speed sensitive stereo volume	●	●	●
Programmable automatic door and boot locking (when car in motion)	●	●	●	Lighting			
Comfort & Convenience				Front fog lights		●	●
Air conditioning		●		Height adjustable headlamps	●	●	●
Automatic digital air conditioning			●	Halogen headlamps	●	●	●
Heat-reflecting windscreen	●	●	●	Twin rear fog and reversing lights	●	●	●
Air re-circulation	●	●	●	High level third brake light	●	●	●
Pollen filter	●	●	●	Boot courtesy light	●	●	●
Tinted windows	●	●	●	Front and rear courtesy lights	●	●	●
Power assisted steering	●	●	●	Front and rear reading lights	●	●	●
Dashboard mounted gear lever	●	●	●	Storage			
Height adjustable steering wheel	●	●	●	Foldable and removable storage box in the boot - Modubox®	●	●	●
Heated rear window with automatic cut-off	●	●	●	15 litre illuminated glove box with cup holders and space for sunglasses and a pen in the lid		●	
Driver's and front passenger's sunvisors with courtesy mirrors (covered on driver's side)	●	●		Air conditioned glove box			●
Driver's and front passenger's sunvisors with covered and illuminated courtesy mirrors			●	Two 9 litre compartments in rear floor	●	●	●
Ticket holder inside windscreen	●	●	●	Large pockets in all four doors with space for a 1.5 litre bottle and a 33 centilitre drinks can	●	●	●
Cigarette lighter	●	●	●	Drawer under driver's seat	●	●	●
Rear tailgate opens to 2 positions	●	●	●	Aircraft style tables on rear of front seats	●	●	●
Fold down table with integrated cup holders and armrests on back of central rear seat	●	●	●	Storage compartment at the bottom of the centre console	●	●	●
Electric front windows with one-touch operation on driver's side	●	●	●	Four lashing eyes in the boot	●	●	●
Electric rear windows	●	●	●	Flat floor for carrying long items (when rear seats removed)	●	●	●
Electric and heated door mirrors	●	●	●	Storage area for carrying sunglasses on driver's side	●	●	●
Electrically retractable door mirrors	●	●	●	Special Equipment & Features			
Electric full size glass sunroof	○	○	●	'Black panel' function to allow most dashboard lights to be switched off for night driving	●	●	●
Height adjustable driver's seat	●	●	●	12 volt socket in the rear	●	●	●
Driver's seat lumbar adjustment	●	●	●	'Guide-me-home' headlamps, which can be selected to stay on for 60 seconds after ignition is switched off	●	●	●
Front folding armrests	●	●	●	Front electric windows with 60 second delay after ignition is switched off	●	●	●
Height and tilt adjustable front head restraints	●	●	●	Stereo operates for 30 minutes after ignition is switched off	●	●	●
Independently foldable and removable rear seats with three retractable rear head restraints	●	●	●	Interior lights come on when vehicle is unlocked and remain on until ignition is switched on	●	●	●
Sliding central rear seat	●	●	●	Speed sensitive wipers (front and rear)	●	●	●
Three independently sliding rear seats	●	●	●	Intermittent rear wash/wipe	●	●	●
Isofix child seat anchorage points on outer rear seats	●	●	●	Automatic rear wiper (when reverse gear is engaged and front wipers are on)	●	●	●
'Talberg' cloth upholstery	●			Option Summary			
Blue or beige 'Sisal' velour upholstery	●	●		Electronic Stability Programme (ESP) and traction control ¹		● <small>2.0i 16V Auto</small>	● <small>2.0i 16V Auto</small>
Blue or beige 'Corinthe' velour upholstery			●			○ <small>1.8i 16V 2.0HDi</small>	○ <small>1.8i 16V 2.0HDi</small>
Beige full leather upholstery			○	Electric full size glass sunroof	○	○	●
Driver Information				Satellite Navigation		○	○
Digital clock	●	●	●	Beige full leather upholstery			○
Digital dashboard display	●	●	●	Metallic/Pearlescent/Black paint	○	○	○
Coolant temperature indicator	●	●	●	● Standard equipment ○ Optional equipment			
Maintenance indicator	●	●	●	¹ ESP automatically brings in Emergency Braking Assistance (EBA) and automatic illumination of hazard warning lamps (in case of rapid deceleration)			
Exterior temperature display with black ice warning indicator	●	●	●				
Status of central locking and child locks display	●	●	●				
On-board trip computer with 6 functions:							
Distance travelled	●	●	●				
Average speed	●	●	●				
Self-programmable audible speed warning	●	●	●				
Number of miles on remaining fuel	●	●	●				
Average fuel consumption	●	●	●				
Current fuel consumption	●	●	●				

Engine

	1.6i	1.8i 16V	2.0i 16V Auto	2.0HDi
Capacity (cc)	1587	1749	1997	1997
Cylinders	4 in line	4 in line	4 in line	4 in line
Bore and stroke (mm)	78.5 x 82	82.7 x 81.4	85.0 x 88.0	85.0 x 88.0
Max power DIN (hp/rpm)	95/5700	117/5500	137/6000	90/4000
Max torque DIN (lb.ft/rpm)	100/3000	120/4000	141/4100	151/1900
Fuel system	Multipoint fuel injection			High pressure direct Diesel injection

Transmission

	Front wheel drive	Front wheel drive	Front wheel drive	Front wheel drive
Five speed manual	●	●		●
Four speed automatic			●	
Clutch type	Dry single plate	Dry single plate	N/A	Dry single plate

Performance

Max speed (mph)	106	118	119	109
0-62 mph (secs)	13.1	10.8	10.9	12.6
Standing 1000m (secs)	35.0	32.4	32.1	34.9

N.B. All figures driver alone

Economy Litres/100km (mpg)

Urban cycle	10.0 (28.2)	10.7 (26.4)	12.6 (22.4)	7.0 (40.4)
Extra urban	6.1 (46.3)	6.0 (47.1)	6.3 (44.8)	4.6 (61.4)
Combined	7.5 (37.7)	7.7 (36.7)	8.6 (32.9)	5.5 (51.4)

N.B. Official Government test fuel consumption figures

CO₂ Emissions (g/km)

	178	184	205	147
--	-----	-----	-----	-----

Wheels & Tyres

15" wheels with 185/65 R15 tyres	●	●	●	●
----------------------------------	---	---	---	---

Weights (kg)

Unladen weight	1240	1245	1326	1300
Max laden weight	1790	1795	1832	1850
Max towing weight braked	900	1300	1300	1300
Max tow hitch download	80	80	80	80
Max roof rack load	80	80	80	80

Brakes

	Front discs, rear drums	Front discs, rear drums	Front and rear discs	Front discs, rear drums
ABS with Electronic Brakeforce Distribution	●	●	●	●
Emergency Braking Assistance			●	

Steering

	Power assisted steering			
Number of turns lock to lock	3.22	3.22	3.22	3.22
Turning circle between kerbs (m)	11.48	11.48	11.48	11.48

Suspension

Anti-roll bars front and rear, front Macpherson strut/coil springs, rear independent trailing arms/torsion bars

Fuel Tank Capacity Litres (gallons)

	55 (12.1)	55 (12.1)	55 (12.1)	60 (13.2)
--	-----------	-----------	-----------	-----------

Boot Volume Litres

Seats up - below parcel shelf	550	550	550	550
Seats folded forward - up to roof	1969	1969	1969	1969
Seats removed - up to roof	2128	2128	2128	2128