





Refinement
R





With pure and dynamic styling, enhanced by stunning frameless doors and 18" alloy wheels, the new Citroën C6 is the perfect compromise between the aesthetic look of a coupe and the imposing presence of an executive limousine. In the pursuit of performance, an automatically controlled speed sensitive rear spoiler optimises the aerodynamics of the C6 and assures perfect stability and poise.





Control



Citroën innovation brings you a system which is rare in the automotive market: the Head-Up display. Using a virtual image within your direct line of vision, the Head-Up display projects key driving information such as speed and navigation data. Safety is thus actively enhanced as you spend considerably less time collecting information, in fact, 0.5 seconds are saved and at 70mph this is equivalent to 15 metres of travel or three large car lengths. The on-board computer continually monitors range, distance travelled, average speed, instant and average fuel consumption. The NaviDrive system incorporates a number of key communications functions including the indispensable GPS navigation system, the radio/CD autochanger audio system, and a GSM dual-band hands-free telephone. The interactive NaviDrive system can be operated by voice recognition and displays information on a large 7" 16/9 format colour screen. The front and rear parking assistance system advises you of any obstacle in close proximity to the vehicle. The audible 'beep' together with the visual display will inform you exactly how much room there is to manoeuvre.



The new Citroën C6 is able to offer you unrivalled standards of driving pleasure. Fitted with the Hydractive III+ suspension, new Citroën C6 brings major improvements in comfort and refinement compared with conventional coil spring systems. Coupled with a damping control system that can be modified instantaneously, whether you prefer a greater emphasis on comfort or sports ride, this suspension guarantees:

- A constant height regardless of load or number of passengers.
- An automatic height adjustment, depending on speed and road condition, to optimise comfort, fuel consumption and ground clearance.

Amongst other driver assistance systems, the cruise control allows you to maintain a constant speed without having to use the accelerator and the speed limiter means the car will not exceed a maximum selected speed unless the accelerator is pressed firmly to de-activate.



P
Power



Fitted with hydraulic speed sensitive power steering, the new Citroën C6 is available with three powerful petrol or diesel engines: The 3.0i V6 petrol engine delivers 215 bhp at 6,000 rpm and 214lb.ft of torque at 3,750 rpm. The 2.7HDi V6 diesel engine delivers 208 bhp at 4,000 rpm and 325 lb.ft of torque at 1,900 rpm. The 2.2HDi diesel engine delivers 173 bhp at 4000 rpm and 273lb.ft of torque at 1500 rpm. These engines satisfy the Euro IV emission standard and the HDi are equipped with a new generation Diesel Particulate Filter System (DPFS). The 3.0i V6 petrol and the 2.7 HDi V6 diesel engines are linked to a new 6-speed auto-adaptive gearbox with 4 different modes that enable smooth control to be maintained in all conditions. This advanced automatic gearbox has the versatility to function in fully automatic mode, sport mode, snow mode or sequential change mode, depending on the circumstances and the drive required. The 2.2HDi engine is linked with a 6-speed manual gearbox.



P
Prestige



Excellence



The clean sculpted design of the dashboard is made up of straight and parallel lines, symbolising precision, and curved lines, symbolising dynamics. The styling is fluid and simple, and a warm atmosphere is created by the blend of chrome and exotic wood. The dashboard is organised around a central half-moon console featuring a multifunction screen, as a natural extension of the console. The screen displays navigation information, on board computer, the telematics, audio, air conditioning and configuration of the vehicle systems. The luxurious seats accommodate all the occupants of the new Citroën C6 in comfort, providing excellent postural support for long journeys. In order to accommodate passengers of all sizes the electric front seats feature multiple adjustments: length, height, tilting seat base, reclining back and lumbar support. These settings can all be memorised together with those of the exterior rear view mirrors and Head-Up display and for two different drivers.



Available on Exclusive models, the Lounge Pack provides rear passengers with two individual seats that are electrically adjustable for a perfect seating position. To increase leg room, the passenger on the rear left can also adjust the longitudinal position of the front passenger seat, using the control fitted into the end of rear central armrest. Leg room can thus be increased to approximately one metre. The automatic air conditioning with two zone temperature and distribution control provides individual thermal comfort for occupants at the front. The rear passengers can control the air flow intensity to quickly create their own desired temperature. The highest levels of thermal comfort are also achieved by a soft diffusion system that eliminates draughts and cocoons the occupants in a consistent blanket of air.



PARIS NEW-YORK TOKYO

CITROËN C6



Serenity

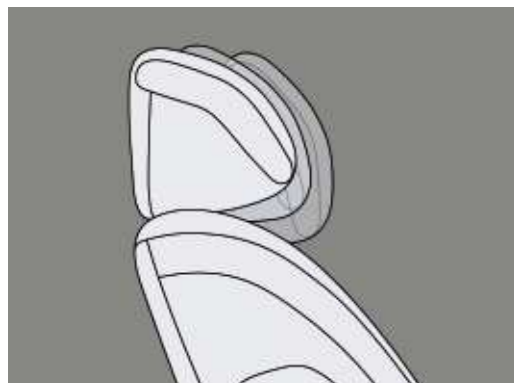


On the motorway, or other major roads at speeds above 50mph, the Lane Departure Warning System (LDWS) detects any crossing of a white line by means of infrared sensors built into the front of the vehicle and directed towards the ground. If the vehicle drifts outside its lane, the driver is warned by one of the vibrating devices built into the left and right sides of the seat. The vibrations are set off on the side corresponding to the direction of drift. In this way the driver can immediately make the necessary corrective action. The advanced Xenon dual function directional headlamps, which work on both dipped and full beam, give a wide field of vision and follow the turn of the steering wheel. This increases visibility in the potentially dangerous dark areas on bends. By night as well as day, the Head-Up display will give you essential driving information without looking away from the road.



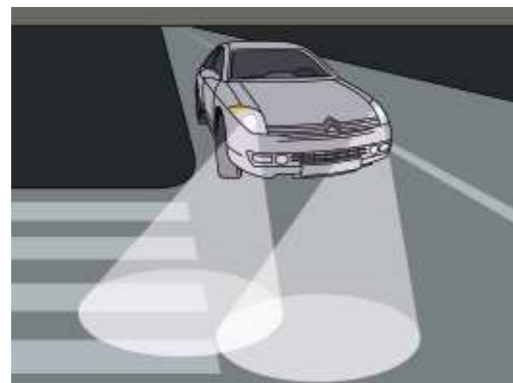
Citroën innovation creates a world first: with the active bonnet the new Citroën C6 is the first car to be awarded the maximum four stars for pedestrian protection by Euro NCAP. This is a major step forward in terms of pedestrian safety. Upon impact, a pyrotechnic mechanism automatically raises the rear of the bonnet by 65mm in just 40 milliseconds, creating a space between the bonnet and the solid engine beneath. The active bonnet absorbs the energy of the impact, minimising injury to the pedestrian. The rear-view mirror and the door mirrors on the driver and passenger sides are electrochromic automatic mirrors. This function allows automatic shift to night-time mode (the mirror becomes slightly tinted) in order to reduce the glare of following vehicles. The high frequency remote control plip can lock and deadlock all the vehicle's doors. It also activates the volumetric (interior surveillance) and perimetric (door and window surveillance) alarm. A warning light located on the central console and visible from the outside, indicates the alarm status. The alarm is automatically deactivated when car is unlocked using the high-frequency remote control.





ACTIVE FRONT HEAD RESTRAINTS + 9 AIRBAGS

In the event of rear impact, the active front head restraints mechanism of the Citroën C6 reduces the risk of neck injuries. It works by automatically moving the headrest forwards towards the nape of the occupant's neck at the same moment as they are restrained by the seatbelt. To provide maximum protection for all the occupants, the Citroën C6 is equipped with no less than nine airbags. In the front, the driver's airbag is adaptable with its pressure and deployment volume varying from 42 to 83 litres, being determined by the severity of any impact. An additional 20-litre airbag, situated beneath the steering wheel, protects the driver's knees, while the 120-litre passenger airbag completes the safety arrangements dedicated to the front seats. Four side airbags at thorax level keep the occupants safe in the event of a side collision. Curtain airbags sited in the roof deploy from top to bottom to protect the heads of front and rear passengers. Three-point anchor seatbelts with pyrotechnical pre-tension and force limiter are fitted to the front and rear side seats, while the three-point belt of the centre seat comes equipped with a belt webbing lock.



XENON DUAL FUNCTION HEADLAMPS

The Xenon dual function headlamps on the Citroën C6 use discharge lamp technology for dipped and full beam. The efficiency of the light intensity generated is further increased by the directional headlamps. This technology pioneered by Citroën means that the car directs the beams according to the angle of lock of the steering wheel and the car's speed. When cornering, the internal beam lights up the dark road ahead with an angle of around 15°, while the exterior beam pivots at a less pronounced angle, so that both the anticipated trajectory and the entire width of the road are illuminated at the same time.



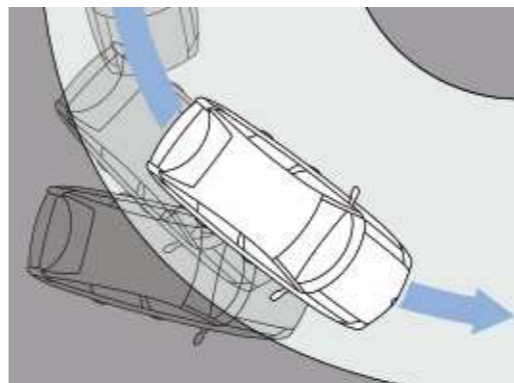
THE HEAD UP DISPLAY

The head up display shows key driving data directly within the driver's field of vision, so that nothing detracts from what matters most. This system can be activated or de-activated at any time and the position, the type of information and the brightness can also be changed. A special display located in the dashboard generates an image relayed by an optical system which then projects it onto the windscreen within the driver's line of vision. By means of refraction, the driver then sees the data displayed in a virtual image that is produced level with the front of the car.



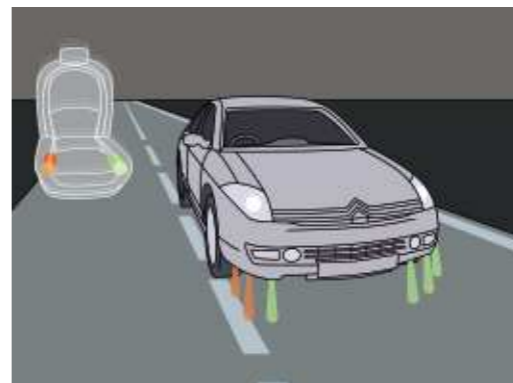
ABS + EBD + EBA + ELECTRIC PARKING BRAKE

The Anti-lock Braking System (ABS) electronically regulates braking pressure to avoid wheel-locking so the driver can maintain road holding and the ability to steer the vehicle when braking. Connected to the ABS, the Electronic Brakeforce Distribution (EBD) ensures braking pressure is evenly applied to the wheels (front-rear and right-left) so that, should the need arise, maximum effect can be achieved from the braking power. Emergency Braking Assistance (EBA) instantly amplifies braking pressure in the event of an emergency so that the stopping distance is the shortest possible. It also automatically activates the hazard warning lights to alert drivers behind. The electric parking brake comes into effect via a control located on the central console. It automatically determines the amount of force required to keep the vehicle in a stationary position.



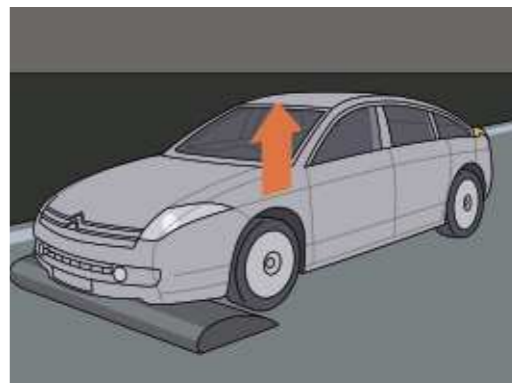
ESP + ASR

The ESP (Electronic Stability Program) operates automatically on the distribution of braking power together with engine speed to stabilise the trajectory of the car on bends as soon as any risk of oversteer or understeer has been detected by the system's electronic sensors. The traction control (ASR) is linked to the ESP and immediately reduces the excess power to the driving wheels in the event of wheel spin. It also operates when moving off should excessive acceleration be applied on a slippery road surface.



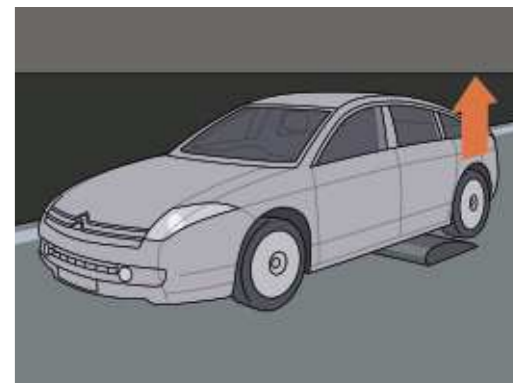
LDWS

To prevent risks caused by any lapses in the driver's attention, the Lane Departure Warning System (LDWS) reacts to any inadvertent lane departure on a fast road. If the car leaves its lane at over 50 mph, sensors located beneath the front of the car detect the lane departure. If the indicator has not been activated, the central calculator immediately triggers one of the two vibrators located in the seat, on the left and on the right. In this way the driver knows to which side the car is veering and can then take corrective action.



ACTIVE SUSPENSION

The new active suspension with adjustable springing and damping ensures: • a constant height, whatever the load • a variable height depending on speed and the profile of the road. To achieve the best balance between stability and comfort, sensors constantly monitor the height of the body and transmit data in real time to the suspension calculator which then adjusts the height of the car in relation to its speed. At higher speeds, road holding is optimised by the automatic reduction of ground clearance by approximately 10 mm. As soon as the condition of the road surface no longer allows it or the speed drops, the car automatically resumes its normal height. On the other hand, when the road condition deteriorates requiring a reduced speed, the calculator generates an increase in ground clearance by approximately 10 mm. At speeds over 40 mph or whenever the road improves, the car once again resumes



its normal ground clearance. The efficiency of the Citroën C6's active suspension is reinforced by a variable damping system. Each wheel is fitted with a vertical wheel clearance sensor and an electronically adjusted variable absorber. The absorber manages vertical movements in real time and independently selects for each wheel the most suitable damping rate. Dampers may be adjusted up to as many as 400 times a second to maximise filtration of road surface irregularities. The dampers vary between a highly damped setting for comfort and a fixed setting delivering maximum body stability for dynamic driving. In this way, the active suspension system, with its adjustable springing and damping, controls the C6's comfort of ride and road holding as determined by the road surface condition, speed and the driver's individual driving style. So with the Citroën C6 the driver can enjoy the best combination of comfort and on-road performance for optimum driving pleasure.



Nothing moves you like a Citroën

CITROËN UK LIMITED, 221 Bath Road, Slough SL1 4BA.
Freephone: 0800 262262.
www.citroen.co.uk
K10578. August 2006.



NOTE: This brochure is intended to show the general appearance of the New Citroën C6. Some of the photographs depict left hand drive vehicles whose specification may not necessarily conform to vehicles imported into the United Kingdom. However, every endeavour has been made to ensure that the information and details contained in the text of this brochure were accurate as of August 2006. The company however reserves the right, whilst preserving the essential characteristics of the model described, to introduce at any time modifications, changes of details, equipment or accessories as may be considered necessary to improve the models described or for any other reason. Every effort will be made to bring the brochure up to date from time to time, but to avoid any misunderstandings any person interested should enquire of the company or its agents as to whether there have been material alterations since the date of issue of this brochure. The Citroën Website contains full information on all Citroën products and offers available in the UK, together with details of our environmental and recycling policies. The site address is: <http://www.citroen.co.uk>
You can contact Citroën directly via customer-services@citroen.com - CITROËN prefers TOTAL.