

OVER **100**  
YEARS  
AUTOMOTIVE HISTORY



The new **Škoda**Fabia

**Recommended Retail Price List  
and Technical Specification**

Effective 1st April 2010



Škoda. Manufacturer of happy drivers.

# Welcome to the new Škoda Fabia

Small, nimble, and a pleasure to drive, the Fabia delivers everything you need, and without having to break the bank. Why not take a minute to understand exactly how the Fabia can make you a happy driver?

## The new Fabia; what is it?

The new Fabia is a small city car that offers you the space and versatility required for everyday life. With space for 5 people and still with enough room in the back for your luggage, the Fabia is the ideal small family car. It's as happy doing 30mph through town on the school run as it is doing 70mph on the motorway, so it can handle every type of journey you can throw at it. And of course, at its core is the traditional Škoda offer of value for money and that legendary "extra bit of car".

## Boot space

The new Fabia continues to impress even in the boot where, with the seats up, the hatch offers 315 litres of space while the estate offers a whopping 505 litres. With the seats down, the hatch and estate have 1,180 litres and 1,485 litres of space respectively. So regardless of whether it's the weekly shop, the annual holiday, or a trip to the garden centre, the Fabia's boot won't be lacking the space you need.

## Versatility across the range

Unlike many of its competitors, the Fabia is available in hatch and estate. With four different trim levels, five petrol engines, three diesel engines and even a DSG gearbox, there will be a Fabia in the range that suits you.

## Music

In addition to the standard radio, every Fabia comes with a 3.5mm aux in socket. With the addition of a cable, this allows MP3 players to be connected to the car, meaning that you can listen to your MP3 player through the car radio. There is also an optional MDI (Multi Device Interface) cable. This enables you to connect a variety of music players through the purchase of additional cables (through retailer supplied accessories) from ipods to devices with USB or mini USB ports.

## Driving Position

As we spend more and more time in our cars, being comfortable is essential. With this in mind, the Fabia has been designed with a high driving position, allowing greater visibility of the road ahead, more headroom, and not to mention making it easier for you to get in and out of. From entry level the Fabia also comes with an adjustable driver's seat and a height and reach adjustable steering wheel so you will find getting a comfortable and safe driving position easy.

## Option packs

A set of option packs have been carefully put together for the Fabia SE to offer you the additional optional equipment that you want, at a price that you want. We've looked at our figures, and packaged together some of the most popular options in a 'Function' and 'Safety' packs that save you in excess of £300 over the cost of the options when purchased individually. Each of these packs costs just £500. More details about what each pack consists of can be found on page 5.



The new Fabia has been refreshed for 2010, giving Fabia a more dynamic appearance. The main changes are at the front, a redesigned, wider front grille and newly designed headlights optically widen the car, strengthening the horizontal lines increasing its road presence. The sculpted bonnet and wraparound windscreen with black A pillars and 'floating' roof remain, making for a car that retains an air of style, elegance and contemporary design.

The modern exterior is matched by the updated interior. Newly designed stereos, steering wheels and upholsteries improve the feeling of style and quality of new Fabia - soft touch surfaces and ergonomically laid out controls make the car a joy to drive. With outstanding boot space, headroom and legroom, not to mention lots of room for luggage, drivers, passengers and luggage all travel in comfort.

The biggest change for new Fabia is under the bonnet. New, cleaner and more efficient petrol and diesel engines offer the driver a suitable engine for every situation. New TSI petrol engines offer a great blend of power and torque combined with low CO<sub>2</sub> and improved fuel economy, whilst the range of new 'Common rail' diesel engines all emit just 109g/km of CO<sub>2</sub>, helping to reduce the impact on the environment.

So now the introduction to the new refreshed Fabia is over, why not take a look at the new Fabia in a little more detail?

## **Škoda really does manufacture happy drivers.**

What does being a happy driver mean to you? Here at Škoda, our goal is to ensure that anyone who experiences a Škoda has a happy experience. Right from the design stage, through the buying experience, to the after sales service, we want our customers to be happy with their Škoda vehicle.

The happiness of our customers is central to all we do here at Škoda, and that's no empty claim - we've been in the top 5 of the JD Power customer satisfaction survey for the last 14 years! Don't take our word for it though, come into a showroom and experience this for yourself.

Škoda. Manufacturer of happy drivers.

# New Škoda Fabia S

Hatchback	CO <sub>2</sub> (g/km)	VED Band**	Insurance Group (50)	Recommended Basic	VAT	RRP	Recommended OTR*
1.2 6V 60bhp 5spd	132	E	TBC	£7,374.47	£1,290.53	£8,665.00	£9,330.00
1.2 12V 70bhp 5spd	128	D	TBC	£7,919.15	£1,385.85	£9,305.00	£9,860.00
1.2 TSI 105bhp 7spd DSG	124	D	TBC	£9,578.72	£1,676.28	£11,255.00	£11,810.00
1.6 TDI CR 75bhp 5spd <sup>♦</sup>	109	B	TBC	£9,110.64	£1,594.36	£10,705.00	£11,260.00
1.6 TDI CR 90bhp 5spd	109	B	TBC	£9,604.26	£1,680.74	£11,285.00	£11,840.00
Estate							
1.2 12V 70bhp 5spd	128	D	TBC	£8,400.00	£1,470.00	£9,870.00	£10,425.00
1.2 TSI 105bhp 7spd DSG	124	D	TBC	£10,059.57	£1,760.43	£11,820.00	£12,375.00
1.6 TDI CR 75bhp 5spd	109	B	TBC	£9,591.49	£1,678.51	£11,270.00	£11,825.00
1.6 TDI CR 90bhp 5spd	109	B	TBC	£10,085.11	£1,764.89	£11,850.00	£12,405.00

## Standard Equipment

1.5-litre drinks holder in front door panels  
 15" 'Satellite' steel wheels (6J x 15" 195/55 R15 85H)  
 3.5mm aux. socket (for MP3 players etc.)  
 3 point seat belts in the rear  
 ABS (Anti-lock Braking System)  
 Driver, passenger and side airbags  
 Driver seat belt warning light  
 Driver and passenger vanity mirrors  
 Electric front windows  
 ESP inc. MSR & ASR (1.2 TSI 105 DSG only)  
 Exterior temperature gauge

Glovebox without cover  
 Headlight range adjustment  
 Height adjustable driver's seat  
 Height and reach adjustable steering wheel  
 Height and adjustable head rests  
 Immobiliser  
 Manually adjustable door mirrors  
 Passenger airbag de-activation switch  
 Power steering  
 Preparation for isofix

Radio 'Swing' 2DIN CD and 4 speakers  
 (can play MP3 recordings)  
 Rear wiper with intermittent control  
 Remote central locking  
 Split rear seat (60%/40%)  
 Ticket holder  
 Tyre repair kit (no spare wheel) †  
 Windscreen wiper with Intermittent  
 control (4 speed)

For offers visit [www.skoda.co.uk/offers](http://www.skoda.co.uk/offers)

♦ Available to order from Wk 17 (26th April)

† Temporary spare wheel or temporary 'Space saver' spare wheel can be ordered as an option. For further details please check page 10



# New Škoda Fabia SE

Hatchback	CO <sub>2</sub> (g/km)	VED Band**	Insurance Group (50)	Recommended Basic	VAT	RRP	Recommended OTR*
1.2 12V 70bhp 5spd	128	D	TBC	£8,697.87	£1,522.13	£10,220.00	£10,775.00
1.2 TSI 85bhp 5spd	121	D	TBC	£9,208.51	£1,611.49	£10,820.00	£11,375.00
1.2 TSI 105bhp 5spd	124	D	TBC	£9,761.70	£1,708.30	£11,470.00	£12,025.00
1.2 TSI 105bhp 7spd DSG	124	D	TBC	£10,357.45	£1,812.55	£12,170.00	£12,725.00
1.6 TDI CR 75bhp 5spd*	109	B	TBC	£9,889.36	£1,730.64	£11,620.00	£12,175.00
1.6 TDI CR 90bhp 5spd	109	B	TBC	£10,382.98	£1,817.02	£12,200.00	£12,755.00
1.6 TDI CR 105bhp 5spd	109	B	TBC	£10,570.21	£1,849.79	£12,420.00	£12,975.00
Estate							
1.2 12V 70bhp 5spd	128	D	TBC	£9,374.47	£1,640.53	£11,015.00	£11,570.00
1.2 TSI 85bhp 5spd	121	D	TBC	£9,885.11	£1,729.89	£11,615.00	£12,170.00
1.2 TSI 105bhp 5spd	124	D	TBC	£10,438.30	£1,826.70	£12,265.00	£12,820.00
1.2 TSI 105bhp 7spd DSG	124	D	TBC	£11,034.04	£1,930.96	£12,965.00	£13,520.00
1.6 TDI CR 75bhp 5spd	109	B	TBC	£10,565.96	£1,849.04	£12,415.00	£12,970.00
1.6 TDI CR 90bhp 5spd	109	B	TBC	£11,059.57	£1,935.43	£12,995.00	£13,550.00
1.6 TDI CR 105bhp 5spd	109	B	TBC	£11,246.81	£1,968.19	£13,215.00	£13,770.00

## Standard Equipment (over Fabia S)

15" 'Antares' alloys with anti-theft locking wheel bolts (6J x 15" 195/55 R15 85H)

Additional 4 speakers in rear

Alarm with tilt sensor

Body coloured door handles and mirrors

Chrome effect door handles and vent surrounds

Electrically heated and adjustable door mirrors

ESP inc. MSR & ASR (1.2 DSG only)

Glovebox cover

Halogen headlights with DE module

Height adjustable passenger seat

Leather gearknob

Load securing loops in luggage space

Manual air conditioning

Remote central locking

Roof rails (Estate only)

Side and rear windows in tinted glass

Storage pockets on rear of front seats

Storage tray in boot

Tinted windscreen

Trip computer

Tyre repair kit (no spare wheel) ††

For offers visit [www.skoda.co.uk/offers](http://www.skoda.co.uk/offers)

## Money saving option packs

As the manufacturer of happy drivers, we've packaged up a fantastic deal on options for the Fabia SE which is sure to bring a smile to your face. Comprising of some of the most sought after options, these new packs offer you a saving of around 40% over the RRP cost of the options when purchased individually.

### Function pack

Includes: acoustic rear parking sensors, black protective side mouldings, climate control air conditioning, rear electric windows, four spoke leather steering wheel and small leather pack.

Basic	VAT	RRP
£425.53	£74.47	£500

**Customer saving of £340**

### Safety pack

Includes: black protective side mouldings, cornering front fog lights, curtain airbags, ESP incl. ABS, MSR, ASR and Dual Rate.

Basic	VAT	RRP
£425.53	£74.47	£500

**Customer saving of £310**

OTR (Recommended On The Road)

\* Recommended 'On the Road' prices include delivery, 12 months Road Fund Licence, DVLA First registration Fee (at £55), and apply to the United Kingdom only.

VED (Vehicle Excise Duty)

\*\* All vehicles will be subject to Vehicle Excise Duty based on the fuel type of the vehicle and its carbon dioxide (CO<sub>2</sub>) emissions level, measured in grams per kilometre (g/km). Due to changes in vehicle emissions data, CO<sub>2</sub> figures may differ on these vehicles if taken from current Škoda UK stock. The VED bands are shown in the table opposite.

<sup>1</sup> First year vehicle licence rates for petrol and diesel cars purchased on or after 1st April 2010. First year rate or 'showroom tax' applies to new car purchases only.

<sup>2</sup> Rate reverts to the Government's applicable Standard VED rate in subsequent years.

Please confirm figures with your Škoda retailer. Edition: UK April 2010. VAT is calculated at 17.5%. For fuel consumption data, please refer to page 14.

Band	CO <sub>2</sub> (g/km)	First 12 Months <sup>1</sup>	Standard VED <sup>2</sup>
A	Up to 100	£0	£0
B	101 - 110	£0	£20
C	111 - 120	£0	£30
D	121 - 130	£0	£90
E	131 - 140	£110	£110
F	141 - 150	£125	£125
G	151 - 165	£155	£155
H	166 - 175	£250	£180
I	176 - 185	£300	£200
J	186 - 200	£425	£235
K	201 - 225	£550	£245
L	226 - 255	£750	£425
M	Over 255	£950	£435





## New Škoda Fabia Elegance

Hatchback	CO <sub>2</sub> (g/km)	VED Band**	Insurance Group (50)	Recommended Basic	VAT	RRP	Recommended OTR*
1.2 12V 70bhp 5spd	128	D	TBC	£9,655.32	£1,689.68	£11,345.00	£11,900.00
1.2 TSI 85bhp 5spd	121	D	TBC	£10,165.96	£1,779.04	£11,945.00	£12,500.00
1.2 TSI 105bhp 5spd	124	D	TBC	£10,719.15	£1,875.85	£12,595.00	£13,150.00
1.2 TSI 105bhp 7spd DSG	124	D	TBC	£11,314.89	£1,980.11	£13,295.00	£13,850.00
1.6 TDI CR 75bhp 5spd <sup>♦</sup>	109	B	TBC	£10,846.81	£1,898.19	£12,745.00	£13,300.00
1.6 TDI CR 90bhp 5spd	109	B	TBC	£11,340.43	£1,984.57	£13,325.00	£13,880.00
1.6 TDI CR 105bhp 5spd	109	B	TBC	£11,527.66	£2,017.34	£13,545.00	£14,100.00
Estate							
1.2 12V 70bhp 5spd	128	D	TBC	£10,331.91	£1,808.09	£12,140.00	£12,695.00
1.2 TSI 85bhp 5spd	121	D	TBC	£10,842.55	£1,897.45	£12,740.00	£13,295.00
1.2 TSI 105bhp 5spd	124	D	TBC	£11,395.74	£1,994.26	£13,390.00	£13,945.00
1.2 TSI 105bhp 7spd DSG	124	D	TBC	£11,991.49	£2,098.51	£14,090.00	£14,645.00
1.6 TDI CR 75bhp 5spd manual	109	B	TBC	£11,523.40	£2,016.60	£13,540.00	£14,095.00
1.6 TDI CR 90bhp 5spd manual	109	B	TBC	£12,017.02	£2,102.98	£14,120.00	£14,675.00
1.6 TDI CR 105bhp 5spd manual	109	B	TBC	£12,204.26	£2,135.74	£14,340.00	£14,895.00

### Standard Equipment (over Fabia SE)

16" 'Comet' alloys with anti-theft locking wheel bolts (6.5J x 16" 205/45 R16 83W)  
Acoustic rear parking sensors  
Black plastic side mouldings  
Climate control air conditioning

Cruise control  
Curtain airbags  
Floor mats  
Front armrest  
Front fog lights

Glasses storage compartment  
Leather 4-spoke steering wheel, gearknob and gaiter  
Maxi-dot trip computer  
Tyre Repair Kit (no spare wheel)<sup>†</sup>

For offers visit [www.skoda.co.uk/offers](http://www.skoda.co.uk/offers)

<sup>♦</sup> Available to order from Wk17 (26th April)

<sup>†</sup> Temporary spare wheel or temporary 'Space saver' spare wheel can be ordered as an option. For further details please check page 10







## New Škoda Fabia Scout

Estate	CO <sub>2</sub> (g/km)	VED Band**	Insurance Group (50)	Recommended Basic	VAT	RRP	Recommended OTR*
1.2 TSI 85bhp 5spd	121	D	TBC	£10,872.34	£1,902.66	£12,775.00	£13,330.00
1.6 TDI CR 90bhp 5spd	109	B	TBC	£12,046.81	£2,108.19	£14,155.00	£14,710.00
1.6 TDI CR 105bhp 5spd	109	B	TBC	£12,234.04	£2,140.96	£14,375.00	£14,930.00

### Key equipment as standard (over Fabia SE)

3 spoke leather steering wheel  
 16" "Scout" alloys (6.5J x 16" 205/45 R16 83W)  
 Cruise control  
 Electric rear windows  
 ESP inc. MSR & ASR  
 Front armrest

Front fog lights  
 Passenger vanity mirror  
 Protective body mouldings  
 Rear electric windows  
 'Scout' design floor mats  
 'Scout' upholstery

Silver coloured roof rails  
 Stainless steel pedal set  
 Sunset glass (from the B-pillar back)  
 Tyre Repair Kit (no spare wheel) †

For offers visit [www.skoda.co.uk/offers](http://www.skoda.co.uk/offers)

† Temporary spare wheel or temporary 'Space saver' spare wheel can be ordered as an option. For further details please check page 10

OTR (Recommended On The Road)

\* Recommended 'On the Road' prices include delivery, 12 months Road Fund Licence, DVLA First registration Fee (at £55), and apply to the United Kingdom only.

VED (Vehicle Excise Duty)

\*\* All vehicles will be subject to Vehicle Excise Duty based on the fuel type of the vehicle and its carbon dioxide (CO<sub>2</sub>) emissions level, measured in grams per kilometre (g/km). Due to changes in vehicle emissions data, CO<sub>2</sub> figures may differ on these vehicles if taken from current Škoda UK stock. The VED bands are shown in the table opposite.

<sup>1</sup> First year vehicle licence rates for petrol and diesel cars purchased on or after 1st April 2010. First year rate or 'showroom tax' applies to new car purchases only.

<sup>2</sup> Rate reverts to the Government's applicable Standard VED rate in subsequent years.

Please confirm figures with your Škoda retailer. Edition: UK April 2010. VAT is calculated at 17.5%. For fuel consumption data, please refer to page 14.

Band	CO <sub>2</sub> (g/km)	First 12 Months <sup>1</sup>	Standard VED <sup>2</sup>
A	Up to 100	£0	£0
B	101 - 110	£0	£20
C	111 - 120	£0	£30
D	121 - 130	£0	£90
E	131 - 140	£110	£110
F	141 - 150	£125	£125
G	151 - 165	£155	£155
H	166 - 175	£250	£180
I	176 - 185	£300	£200
J	186 - 200	£425	£235
K	201 - 225	£550	£245
L	226 - 255	£750	£425
M	Over 255	£950	£435



## Factory Fitted Optional Equipment

Available on all models	Basic	VAT	RRP
Acoustic rear parking sensors (standard on Elegance)	£212.77	£37.23	£250.00
Electric sunroof (not available on S)	£310.64	£54.36	£365.00
ESP ESP + ASR (standard on Scout)	£297.87	£52.13	£350.00
Heated front seats	£127.66	£22.34	£150.00
Integrated headlight washers	£68.09	£11.91	£80.00
MDI (Mobile Device Interface) (not available on S)	£131.91	£23.09	£155.00
Metallic / Pearl effect paint / Sprint Yellow	£348.94	£61.06	£410.00
Smoker's pack (cigarette lighter and ashtray)	£25.53	£4.47	£30.00
Sports suspension (not available on Scout)	£80.85	£14.15	£95.00
Storage box under drivers seat (not available on S)	£25.53	£4.47	£30.00
Storage box under passenger seat	£25.53	£4.47	£30.00
Storage boxes - front seats	£42.55	£7.45	£50.00
Temporary spare steel wheel / 'Space saver' steel wheel ††	£38.30	£6.70	£45.00
Textile floor mats (S and SE only)	£29.79	£5.21	£35.00
Third rear headrest	£46.81	£8.19	£55.00
Variable boot floor (not available on S)	£106.38	£18.62	£125.00
White roof †††	£302.13	£52.87	£355.00

### Available on Fabia S models

3-spoke leather steering wheel and small leather pack †	£204.26	£35.74	£240.00
4-spoke leather steering wheel and small leather pack †	£136.17	£23.83	£160.00
Alarm with interior monitoring, back up horn, and remote central locking	£229.79	£40.21	£270.00
Black protective side mouldings	£25.53	£4.47	£30.00
Black / Silver roof rails (Estate only)	£161.70	£28.30	£190.00
Front fog lights	£127.66	£22.34	£150.00
Glovebox cover	£34.04	£5.96	£40.00
Manual air conditioning	£442.55	£77.45	£520.00
Sunset glass (from B-pillar back)	£221.28	£38.72	£260.00

### Available on Fabia SE models (See page 5 for outstanding value option packs)

16" 'Atria' alloys (6.5Jx16" 205/45 R16 83W)	£178.72	£31.28	£210.00
3-spoke leather steering wheel and small leather pack †	£204.26	£35.74	£240.00
3-spoke MFSW for radio and small leather pack †	£238.30	£41.70	£280.00
3-spoke MFSW for radio and telephone and small leather pack †	£255.32	£44.68	£300.00
4-spoke leather steering wheel and small leather pack †	£136.17	£23.83	£160.00
4-spoke MFSW for radio and small leather pack †	£170.21	£29.79	£200.00
4-spoke MFSW for telephone and radio and small leather pack †	£187.23	£32.77	£220.00
ABS Plus (ABS+TPM)	£76.60	£13.40	£90.00
Black protective side mouldings	£25.53	£4.47	£30.00
Black / Silver roof rails (Estate only)	£89.36	£15.64	£105.00
Climate control air conditioning	£221.28	£38.72	£260.00
Cornering front fog lights	£191.49	£33.51	£225.00
Cruise control	£136.17	£23.83	£160.00
Curtain airbags	£174.47	£30.53	£205.00
ESP Plus (ESP+TPM+HHC)	£391.49	£68.51	£460.00
Front armrest	£68.09	£11.91	£80.00
Front fog lights	£127.66	£22.34	£150.00
Maxi-dot trip computer	£119.15	£20.85	£140.00
Partial leather upholstery ††† (cloth, leather and artificial leather)	£476.60	£83.40	£560.00
Rear electric windows	£119.15	£20.85	£140.00
Sunset glass (from B-pillar back)	£136.17	£23.83	£160.00
Telephone preparation GSM II with Bluetooth®	£272.34	£47.66	£320.00
Tyre pressure monitor (TPM)	£76.60	£13.40	£90.00

### Available on Fabia Elegance models

3-spoke leather steering wheel and small leather pack †	£68.09	£11.91	£80.00
3-spoke MFSW for radio and small leather pack †	£102.13	£17.87	£120.00
3-spoke MFSW for radio and telephone and small leather pack †	£119.15	£20.85	£140.00
4-spoke MFSW for radio and small leather pack †	£34.04	£5.96	£40.00
4-spoke MFSW for telephone and radio and small leather pack †	£51.06	£8.94	£60.00
Alloy wheels 'Elba' (6.5J x 16") - 4 pcs	FOC	FOC	FOC
Black / Silver roof rails (Estate only)	£89.36	£15.64	£105.00
Cornering front fog lights	£76.60	£13.40	£90.00
Curve projector halogen headlights including cornering front fog lights	£221.28	£38.72	£260.00
ESP Plus (ESP+TPM+HHC)	£391.49	£68.51	£460.00

Note: MFSW - Multi Function Steering Wheel

† 'Feinappa' leather on gear knob and handbrake, and leatherette on gearstick surround

†† Dependant on trim and optional wheel fitted. Please consult your Retailer for details

††† Must be ordered in conjunction with a three, four or MFSW leather steering wheel

♦♦ The white roof option is only available on Hatch and selected body colours. See page 12 for details

## Factory Fitted Optional Equipment continued

Available on Fabia Elegance models (continued)	Basic	VAT	RRP
Partial leather upholstery (cloth, leather and artificial leather)	£476.60	£83.40	£560.00
Rear electric windows	£119.15	£20.85	£140.00
Sunset glass (from B-pillar back)	£136.17	£23.83	£160.00
Telephone preparation GSM II with Bluetooth®	£187.23	£32.77	£220.00
Tyre pressure monitor (TPM)	£76.60	£13.40	£90.00

Available on Fabia Scout models	Basic	VAT	RRP
17" 'Scout' alloys (7Jx17" 205/40 R17 84W)	£263.83	£46.17	£310.00
3-spoke MFSW for radio and small leather pack †	£34.04	£5.96	£40.00
3-spoke MFSW for radio and telephone and small leather pack †	£68.09	£11.91	£80.00
Climate control air conditioning	£221.28	£38.72	£260.00
Curtain airbags	£174.47	£30.53	£205.00
ESP Plus (ESP+TPM+HHC)	£119.15	£20.85	£140.00
Glasses storage compartment	£12.77	£2.23	£15.00
Maxi-dot trip computer	£119.15	£20.85	£140.00
Partial leather upholstery (cloth, leather and artificial leather)	£472.34	£82.66	£555.00
Telephone preparation GSM II with Bluetooth®	£272.34	£47.66	£320.00
Tyre pressure monitor (TPM)	£76.60	£13.40	£90.00

## Retailer Supplied Accessories

Available on all models	Part Number	Basic	VAT	RRP
15" 'Avior' alloy (195/55 R15 tyre)	CCH700005	£91.91	£16.08	£108.00
15" 'Line' alloy (195/55 R15 tyre)	CCH700001	£91.91	£16.08	£108.00
15" wheel trim covers (set of 4)	CDB700002	£40.85	£7.15	£48.00
16" 'Atria' alloy (205/45 R16 tyre)	CCH700006	£103.83	£18.17	£122.00
16" 'Bear' alloy (205/45 R16 tyre)	CCH700002	£103.83	£18.17	£122.00
Aluminium ski & snowboard holder	LBB000001	£59.57	£10.42	£70.00
Boot net	DMA710001	£13.62	£2.38	£16.00
Carpet mats (set of 4)	DCA700102	£22.98	£4.02	£27.00
Child's booster seat	DDF000007	£24.76	£1.24	£26.00
Cool / warm box	BCH009001	£55.32	£9.68	£65.00
DIN radio installation kit	AZO700001	£27.23	£4.77	£32.00
Door sill covers - Fabia logo	KDA700002	£54.47	£9.53	£64.00
Emergency light kit	GGH009001	£9.36	£1.64	£11.00
Fire extinguisher	000093251	£63.83	£11.17	£75.00
Fire extinguisher holder	GCA700001	£27.23	£4.77	£32.00
First aid kit (soft pack)	GFA410010GB	£18.72	£3.28	£22.00
Front centre Armrest	DAO700001	£108.08	£18.91	£127.00
Front fog lights kit	BFB700001	£165.96	£29.04	£195.00 ↗
Front mud flaps	KEA700001	£17.02	£2.98	£20.00 ↗
G1 ISOFIX DUO plus seat	DDA000003A	£276.19	£13.81	£290.00
G1 top tether ISOFIX child seat	DDA000006	£276.19	£13.81	£290.00
Leather gear knob	FFA700002	£36.59	£6.40	£43.00 ↗
Leather handbrake grip	FFA700010	£31.49	£5.51	£37.00 ↗
Leather steering wheel	FBA600000	£134.47	£23.53	£158.00 ↗
Luggage basket	LBT009006	£254.47	£44.53	£299.00
MP3 player audio lead 1.5m	ZGB000035595	£2.98	£0.52	£3.50
MP3 player audio lead 20cm	ZGB000035595A	£2.13	£0.37	£2.50
Multi purpose portable bag	DMK000001	£77.45	£13.55	£91.00
Protective side strips	KGA700001	£22.98	£4.02	£27.00
Rear bumper cover	KDA710001	£27.23	£4.77	£32.00
Rear mud flaps	KEA710001	£17.02	£2.98	£20.00
Rear parking sensors	BEA710001	£144.68	£25.32	£170.00 ↗
Remote control for central locking	BKA700003	£85.11	£14.89	£100.00
Roof bars	LAS710001A	£134.47	£23.53	£158.00
Rubber boot mat	DCD710001	£26.38	£4.62	£31.00
Rubber floor mats (set of 4)	DCC700101	£22.98	£4.02	£27.00
Ski holder	LBT071027	£69.79	£12.21	£82.00
Spare bulb kit 1	BDB700001	£9.36	£1.64	£11.00
Spare bulb kit 3,5 or 6	BDB700003/5/6	£13.62	£2.38	£16.00
Towbar (Detachable)	EEA700001	£160.85	£28.15	£189.00 ↗
Warning triangle	GGA700001A	£11.06	£1.94	£13.00
Wind deflectors - front windows	KCD709001	£27.23	£4.77	£32.00
Wind deflectors - rear side windows	KCD719001	£27.23	£4.77	£32.00

1 Third rear headrest 2 Curtain airbags  
3 Multi functional steering wheel  
4 Sunroof 5 Cool box 6 Isofix child's seat  
7 Towbar 8 Lockable luggage box

All child seats include VAT at 5%. All RRP's exclude the cost of fitting. Please ask your retailer if fitting is necessary and a quote including labour.

Please note this is a small collection of the accessories available for the Fabia. For further details please go to [www.accessories.skoda.co.uk](http://www.accessories.skoda.co.uk)

↗ This product requires fitting at a retailer at extra cost.



## Škoda Fabia colours



Candy White  
9P9P



Cappuccino metallic  
4K4K



Satin Grey metallic†  
5T5T



Corrida Red†  
8T8T



Rosso Brunello metallic†  
X7X7



Anthracite Grey metallic†  
9J9J



Black Magic pearl effect†  
1Z1Z



Sprint Yellow\*\*†  
F2F2



Storm Blue metallic†  
8D8D



Brilliant Silver metallic  
8E8E



Arctic Green metallic†  
8B8B



Aqua Blue metallic†  
3U3U



Safari metallic\*  
8S8S

Because of errors which may occur in the print, the colours illustrated here may differ from the actual finishes themselves. Your Škoda retailer will be pleased to advise you. Please see your local retailer for samples.

\* Safari metallic - Fabia Scout only. Available to order from Wk 18 (3rd May)

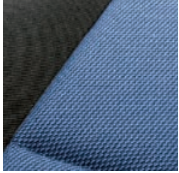
\*\* Not available on Fabia Scout

† White roof available in combination with these colours only.

# Škoda Fabia trims and wheels

## Fabia S

Standard



Stone Blue upholstery  
Onyx/silver dash or  
onyx/onyx dash



Stone Grey upholstery  
Onyx/silver dash or  
onyx/onyx dash



15" 'Satellite'  
Steel wheels

## Fabia SE

Standard



Domino Grey  
upholstery  
Onyx/silver dash or  
onyx/onyx dash



Domino Black  
upholstery  
Onyx/silver dash or  
onyx/onyx dash

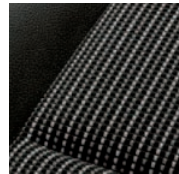


15" 'Antares' alloys

Option



16" 'Atria' alloys



Partial leather  
upholstery

## Fabia Elegance

Standard



Chess Black upholstery  
Onyx/ Onyx dash

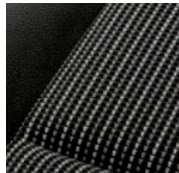


Chess Beige upholstery  
onyx / ivory dash



16" 'Comet' alloys

Option



Partial leather  
upholstery

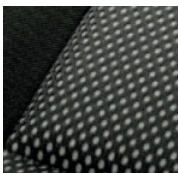
Option



16" 'Elba' alloys

## Fabia Scout

Standard



'Scout' upholstery



16" 'Scout' alloys"

## Available on all models

Option



See page 10 for details

# Engine Specifications

## Petrol Engines

	1.2 6V 60bhp	1.2 12V 70bhp	1.2 TSI 85bhp	1.2 TSI 105bhp	1.2 TSI 105bhp DSG
Trim level	S	S / SE / Elegance	SE / Elegance / Scout	S/ SE/ Elegance	S / SE / Elegance
Type	3-cylinder in-line engine	3-cylinder in-line engine	4-Cylinder in-line engine	4-Cylinder in-line engine	4-Cylinder in-line engine
Valves per cylinder	2	4	2	2	2
Fuel injection system	Multi point fuel injection	Multi point fuel injection	Electronically Controlled Direct Injection	Electronically Controlled Direct Injection	Electronically Controlled Direct Injection
Cubic capacity cc	1,198	1,198	1,197	1,197	1,197
Bore x stroke mm	76.5 x 86.9	76.5 x 86.9	71.0 x 75.6	71.0 x 75.6	71.0 x 75.6
Air pollution regulation	EU V	EU V	EU V	EU V	EU V
Compression ratio	10.3:1	10.5:1	10.0:1	10.0:1	10.0:1

## Hatchback

Performance	SE / Elegance				
Max speed mph (km/h)	96 (155)□	101 (163)□	110 (177)□	119 (191)□	117 (189)□
Acceleration 0-62mph (seconds)	16.5	14.9	11.7	10.1	10.2
Max. performance (Bhp/rpm)	60/5,200	70/5,400	85/4,800	105/5,000	105/5,000
Max. torque (Nm/rpm)	108/3,000	112/3,000	160 / 1,500 - 3,500	175 / 1,550 - 4,100	175 / 1,550 - 4,100
Fuel consumption mpg (l/100km)					
Urban*	37.7 (7.5)	38.7 (7.3)	42.8 (6.6)	41.5 (6.8)	40.4 (7.0)
Extra Urban*	60.1 (4.7)	62.8 (4.5)	64.2 (4.4)	62.8 (4.5)	64.2 (4.4)
Combined*	49.6 (5.7)	51.4 (5.5)	54.3 (5.2)	53.3 (5.3)	53.3 (5.3)
CO <sub>2</sub> emissions g/km*	132	128	121	124	124

## Estate

Performance	S / SE / Elegance		SE / Elegance / Scout		S/ SE/ Elegance		S / SE/ Elegance	
Max speed mph (km/h)	n/a	102 (164)□	111 (178)□	120 (193)□	118 (190)□			
Acceleration 0-62mph (seconds)	n/a	15.0	11.8	10.2	10.3			
Max. performance (Bhp/rpm)	n/a	70/5,400	85 / 4,800	105 / 5,000	105 / 5,000			
Max. torque (Nm/rpm)	n/a	112/3,000	160 / 1,500- 3,500	175 / 1,550-4,100	175 / 1,550-4,100			
Fuel consumption mpg (l/100km)								
Urban*	n/a	38.7 (7.3)	42.8 (6.6)	41.5 (6.8)	40.4 (7.0)			
Extra Urban*	n/a	62.8 (4.5)	64.2 (4.4)	62.8 (4.5)	64.2 (4.4)			
Combined*	n/a	51.4 (5.5)	54.3 (5.2)	53.3 (5.3)	53.3 (5.3)			
CO <sub>2</sub> emissions g/km*	n/a	128	121	124	124			

\* Fuel consumption and CO<sub>2</sub> emissions according to EU Directive 99/94. □ Where law permits.

### Power transmission

**Clutch** The clutch assembly comprises of a single dry clutch disc with membrane spring, asbestos free.

**Manual transmission** Five-speed manual transmission, fully synchronised with direct gearshift.

**Automatic transmission** 7 speed DSG  
Two coaxial dry multiple disc clutch,  
electro - hydraulically operated.

### Chassis

**Front axle/rear axle** McPherson suspension with lower triangular links and torsion stabiliser.

**Suspension** Coil springs, telescopic shock absorbers, rear springs located outside the shock absorber.

**Braking system** Hydraulic dual-diagonal circuit braking system vacuum assisted.

**Front brakes** Ventilated disc brakes in sliding calliper design with piston.

**Rear brakes** Drum brakes with two self-adjusting brake shoes. Disk brakes on 1.2 TSI 105 bhp DSG

**Handbrake** Mechanical handbrake operating on rear wheels.

**Steering** Maintenance free rack and pinion steering with power assist.

**Turning circle (m)** 10

# Engine Specifications

## Diesel Engines

	1.6TDI CR 75 bhp	1.6TDI CR 90bhp	1.6TDI CR 105bhp
Trim level	S / SE / Elegance	S / SE / Elegance / Scout	SE / Elegance / Scout
Type	4-Cylinder in-line engine	4-Cylinder in-line engine	4-Cylinder in-line engine
Valves per cylinder	4	4	4
Fuel injection system	Electronically Controlled Direct Injection	Electronically Controlled Direct Injection	Electronically Controlled Direct Injection
Cubic capacity cc	1,598	1,598	1,598
Bore x stroke mm	79.5 x 80.5	79.5 x 80.5	79.5 x 80.5
Air pollution regulation	EU V	EU V	EU V
Compression ratio	16.5:1	16.5:1	16.5:1

## Hatchback

Performance		SE / Elegance	
Max speed mph (km/h)	103 (166) □	109 (176) □	117 (188) □
Acceleration 0-62mph (seconds)	14.1	12.6	10.9
Max. performance (Bhp/rpm)	75 / 4,000	90 / 4,200	105 / 4,400
Max. torque (Nm/rpm)	195 / 1,500-2,000	230 / 1,500-2,500	250 / 1,500-2,500
Fuel consumption mpg (l/100km)			
Urban*	55.4 (5.1)	55.4 (5.1)	55.4 (5.1)
Extra Urban*	78.5 (3.6)	78.5 (3.6)	78.5 (3.6)
Combined*	67.3 (4.2)	67.3 (4.2)	67.3 (4.2)
CO <sub>2</sub> emissions g/km*	109	109	109

## Estate

Performance	S	S / SE / Elegance / Scout	SE / Elegance / Scout
Max speed mph (km/h)	104 (167)	110 (177)	118 (190)
Acceleration 0-62mph (seconds)	14.2	12.7	11.0
Max. performance (Bhp/rpm)	75 / 4,000	90 / 4,200	105 / 4,400
Max. torque (Nm/rpm)	195 / 1,500-2,000	230 / 1,500-2,500	250 / 1,500-2,500
Fuel consumption mpg (l/100km)			
Urban*	55.4 (5.1)	55.4 (5.1)	55.4 (5.1)
Extra Urban*	78.5 (3.6)	78.5 (3.6)	78.5 (3.6)
Combined* CO <sub>2</sub> emissions g/km*	67.3 (4.2)	67.3 (4.2)	67.3 (4.2)
CO <sub>2</sub> emissions g/km*	109	109	109

\* Fuel consumption and CO<sub>2</sub> emissions according to EU Directive 99/94. □ Where law permits.

### Tank

**Fuel tank content** 45 litres

**Fuel** Unleaded petrol RON 95 or unleaded petrol RON 91<sup>†</sup> / Diesel.

**Body type** Five-door, five-seat, double-space steel bodywork, fully zinc-coated.

### Official fuel consumption for the Fabia range in mpg (litres/100km):

**urban** 37.7(7.5) - 55.4(5.1);  
**extra urban** 60.1(4.7) - 78.5(3.6);  
**combined** 49.6(5.7) - 67.3(4.2).

**CO<sub>2</sub> Range** 109 - 132 g/km

<sup>†</sup> Using low-octane fuel may affect engine performance.

All bhp figures are metric and are worked out using a conversion rate of 1.36 of KW figures - these metric bhp figures are otherwise known as PS

# Measurements and Weights

## Škoda Fabia Hatchback

### Exterior dimensions (mm)

Length (mm)	4,000
Width (mm)	1,642
Height (mm)	1,498 <sup>†</sup>
Wheelbase (mm)	2,451
Track front (mm)	1,433
Track rear (mm)	1,426
Clearance (mm)	134

### Interior dimensions (mm)

Headroom front/rear (mm)	989/994
Front legroom (mm) (max/min)	1,075/858
Rear legroom (mm) (max/min)	864/621
Width of front/rear seats (mm)	1,380/1,384

Boot capacity (litres) 300

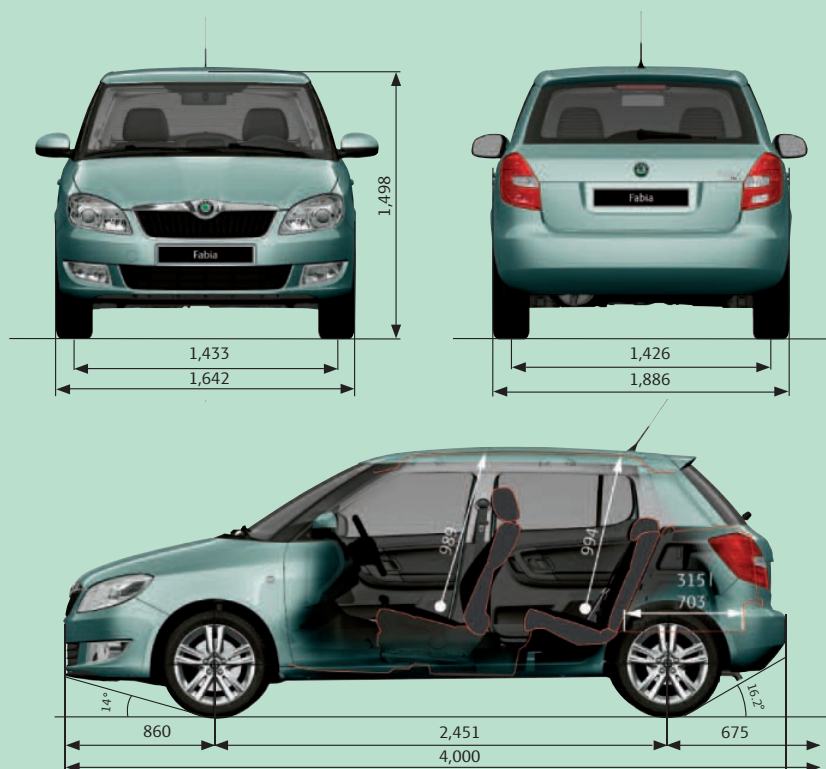
Boot capacity with rear seats folded (litres) 1,163

Boot capacity without spare wheel (litres) 315

Boot capacity with rear seats folded and no spare wheel (litres) 1,180

Figures are for vehicle carrying average load and three passengers.

<sup>†</sup> Figures for unloaded vehicle



Petrol	1.2 6V 60bhp	1.2 12V 70bhp	1.2 TSI 85bhp	1.2 TSI 105bhp	1.2 TSI 105bhp DSG
<b>Weight</b>					
Kerb weight* kg	1,090	1,095	1,116	1,130	1,164
Total weight* kg	1,545	1,550	1,571	1,585	1,619
Payload kg	455	455	455	455	455
Max roof load kg	75	75	75	75	75
Towing unbraked max kg	500	500	500	500	500
Towing braked max kg	800	800	1,000	1,000	1,000
Nose weight max kg	50	50	50	50	50

Diesel	1.6TDI CR 75 bhp	1.6TDI CR 90bhp	1.6TDI CR 105bhp
<b>Weight</b>			
Kerb weight* kg	1,204	1,204	1,219
Total weight* kg	1,659	1,659	1,674
Payload kg	455	455	455
Max roof load kg	75	75	75
Towing unbraked max kg	500	500	500
Towing braked max kg	1,000	1,200	1,200
Nose weight max kg	50	50	50

\* Weight depending on level of equipment, includes the weight of driver at 75kg

All measurements and weights correct at time of going to print but may be subject to change and may vary according to passengers and load in vehicle.



## Škoda Fabia Estate

### Exterior dimensions (mm)

Length (mm)	4247
Width (mm)	1,642
Height (mm)	1,498 <sup>†</sup>
Wheelbase (mm)	2,451
Track front (mm)	1,433
Track rear (mm)	1,426
Clearance (mm)	135 <sup>†</sup>

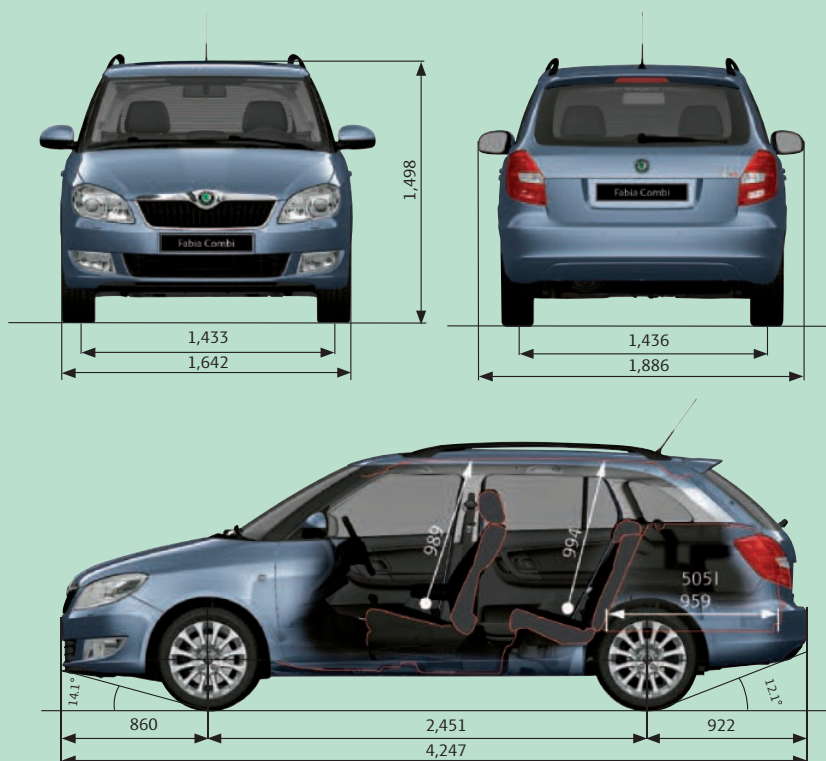
### Interior dimensions (mm)

Headroom front/rear (mm)	989/994
Front legroom (mm) (max/min)	1,075/858
Rear legroom (mm) (max/min)	864/621
Width of front/rear seats (mm)	1,380/1,383

Boot capacity (litres)	480
Boot capacity with rear seats folded (litres)	1,460
Boot capacity without spare wheel (litres)	505
Boot capacity with rear seats folded and no spare wheel (litres)	1,485

Figures are for vehicle carrying average load and three passengers.

<sup>†</sup> Figures for unloaded vehicle



Petrol	1.2 12V 70bhp	1.2 TSI 85bhp	1.2 TSI 105bhp	1.2 TSI 105bhp DSG
<b>Weight</b>				
Kerb weight* kg	1,115	1,136	1,150	1,184
Total weight* kg	1,570	1,591	1,605	1,639
Payload kg	455	455	455	455
Max roof load kg	75	75	75	75
Towing unbraked max kg	450	450	450	450
Towing braked max kg	800	1,000	1,000	1,000
Nose weight max kg	50	50	50	50

Diesel	1.6TDI CR 75 bhp	1.6TDI CR 90bhp	1.6TDI CR 105bhp
<b>Weight</b>			
Kerb weight* kg	1,224	1,224	1,239
Total weight* kg	1,679	1,679	1,694
Payload kg	455	455	455
Max roof load kg	75	75	75
Towing unbraked max kg	450	450	450
Towing braked max kg	1,000	1,200	1,200
Nose weight max kg	50	50	50

## Technical glossary

**ABS:** the anti-lock braking system prevents the wheels from locking during heavy or emergency braking, enabling the vehicle to remain steerable. When braking, wheel speed sensors measure the road wheel speed and should one or more wheels start to lock the system reduces brake pressure to that wheel.

**MSR:** the engine torque control system recognises when the wheels are subject to too much slippage and regulates the power supply by intervening in the engine management system. This prevents wheelspin when, for example, changing down on a smooth or wet road surface. MSR is a constituent part of the ASR system.

**EDL:** the electronic differential lock continually compares the rpm of the drive wheels, and if it identifies a difference between them which could lead to an individual wheel spinning, for example if the two wheels are on different types of surface or accelerating on wet leaves, the system brakes the wheel affected until uniform rpm of all drive wheels is restored.

**MBA:** the mechanical brake assist system increases brake effort under emergency braking conditions through a dual rate servo.

**ASR:** anti-slip regulation traction control ensures the Fabia's stability when pulling away or accelerating. If the engine power or torque being transmitted to the drive wheels is too great, for example on a slippery road surface, engine torque is automatically reduced until optimum road holding returns, thus preventing wheelspin. A light indicates whether the ASR system is on. It can be manually switched off.

**ESP:** electronic stability programme is designed to stabilise the dynamic handling response of the vehicle by counteracting any tendency towards oversteer or understeer. The ESP constantly compares the actual movement of the vehicle with predetermined values and according to the situation ESP reacts by braking each wheel individually (according to direction of slip) and automatically adjusting the engine's output.

**CAN Bus:** the CAN Bus is an electronic data bus which links the various different electronic control systems in the car. It ensures ideal co-ordination between systems and reduces the amount of wiring needed in the car.

**Fuel cut-out:** should one or more of the airbags inflate after an accident, this system automatically cuts out the fuel supply, thus preventing subsequent leakage of the diesel or petrol.

**Trip Computer:** the trip computer not only features an impressive range of data displays, operating it is simplicity itself. A multifunction touch key enables you to call up all relevant data on the easy-to-read display. Features include external temperature, time, current fuel consumption, average fuel consumption, miles driven and average speed.

**TPM:** Draws the drivers attention to any pressure loss in any of the tyres. Early warning can prevent damage from occurring as a result of an under inflated tyre or a defect that radically changes the cars behaviour and driveability.

**DPF:** diesel particulate filter is part of the exhaust system responsible for cleaning the engine exhaust gases before they enter the atmosphere. The DPF catches soot particles emitted in the exhaust gas and it works in conjunction with the catalytic converter, which reduces the amount of harmful gases entering the atmosphere. The DPF must periodically be emptied of the soot particles, a process known as regeneration. This involves elevated exhaust system temperatures.

A driving style is required during regeneration, where a constant vehicle speed above 37 mph must be maintained. This does not always suit customers who make frequent short journeys or experience stop/start driving or drive within inner-city or urban areas.

**HHC:** Hill hold control allows for a safe hill start by holding the brake for a small amount of time, reducing the risk of unintentional reversing or roll back.



## Customer services

### Talk to us on 08457 745 745

No matter what the query, our dedicated call centre is always ready to listen. No matter how big or small the request, speak to one of customer care advisors to see if they can help. The call centre is open from 8.30am-5.30pm. If you're calling out of hours, then a message can be left and you'll be contacted back.

### Peace of mind with a Škoda warranty

In the first two years of owning your car, you'll get the peace of mind of a two year unlimited mileage warranty. In addition, you'll also get a further warranty on new vehicles supplied through the appointed dealer network until the vehicle has completed 60,000 miles or the end of the third year, whichever is sooner.

Your Fabia also benefits from a 3 year paint warranty and 12 year anti-perforation warranty.

### A network that's here to help

With 14 years in the top 5 of JD Power's customer satisfaction survey, our network of approximately 125 retailers knows how to treat a customer. You can be sure that as a Škoda customer, your retailer will look after you from the moment you walk through the door, throughout the life of your Škoda. Your Fabia will be serviced and maintained to the highest standards by specially trained Škoda technicians. And when you need a spare part you'll be happy to know that most are held in stock, or can be ordered within 24 hours. So if top class customer satisfaction is what you're after, the Škoda network will be there for you.

### Motability

People in receipt of the Higher Mobility Component of the Disability Living Allowance receive special help from Škoda. Preferential prices on low cost Contract Hire are available through your local approved Motability retailer. For full details, contact your retailer.

### If your Škoda's in trouble, rely on Škoda Assistance

Completely free of charge, every new Škoda is covered by Škoda Assistance, provided by the RAC through a dedicated team. This cover lasts for 3 years. So if you ever break down, you can use the freephone number to call out someone who really knows about Škoda cars to help. This service is even available in Europe, so you don't need additional breakdown cover when you're driving on the continent.

### Financing your Škoda

We all know that times are hard, so Škoda Finance specialises in providing funding solutions for Škoda drivers. Regardless of whether you're a private or business user, you can choose from a range of funding options

#### Finance products available are:

- Solutions – a personal contract plan
- Hire purchase
- Lease purchase
- Finance lease
- Contract hire

With all Škoda Finance products you can choose a fixed-cost maintenance plan designed to help you budget accurately. No matter what finance product you choose, your local Škoda retailer will be able to provide you with a personalised quote that could meet your budget and vehicle needs. Škoda Finance is a trading name of Volkswagen Financial Services (UK) Limited, Brunswick Court, Yeomans Drive, Blakelands, Milton Keynes MK14 5LR. Registered in England number 2835230.

### Adding that little extra to your car

If the standard specification and factory fitted options aren't enough for you, then why not take a look at our range of retailer fitted accessories? A separate accessories brochure can be found at your local retailer, or can be ordered by phoning our call centre, or by going on-line at [www.skoda.co.uk](http://www.skoda.co.uk).

### Škoda Insurance

We want you to start enjoying your new car from day one and thanks to Škoda Insurance complimentary seven day cover, you can. Call free on 0800 316 7895 (lines are open Monday to Friday 8am – 9pm and Saturday 9am – 5pm), provide a few details and a cover note will be sent to your retailer. They will then tax your car and you can drive it away.

Visit [www.insurewithskoda.co.uk](http://www.insurewithskoda.co.uk) for details of the full range of insurance products available. Here you can also get a quote for your annual car insurance and buy it online too. All of our insurance products are designed to make your experience of owning your Škoda as happy as possible.

Škoda Insurance is a trading name of Volkswagen Insurance Service (Great Britain) Limited, an appointed representative of Volkswagen Financial Services (UK) Limited, Brunswick Court, Yeomans Drive, Blakelands, Milton Keynes MK14 5LR. Registered in England number 2835230. Škoda Insurance is sold, underwritten and administered by Allianz Insurance plc registered in England number 84638. Registered office 57 Ladymead, Guildford, Surrey GU1 1DB. Volkswagen Financial Services (UK) Limited and Allianz Insurance plc are authorised and regulated by the Financial Services Authority. Volkswagen Financial Services (UK) Limited and Allianz Insurance plc are not part of the same corporate group.

0547 04/10

## Welcome to your Škoda retailer

The information in this brochure referring to specification, design, equipment, material and external appearance relates to the time at which this brochure was printed. Whilst every effort is made to ensure its accuracy, the information in this brochure is not binding and is subject to alteration. Some illustrations in this brochure depict left hand drive models, with both standard and optional equipment shown. Please confirm exact specifications, prices and colour availability with your Škoda retailer who will be notified of any specification changes as they occur.

**Edition:** UK 04/10

**Information:** 08457 745 745

**Internet:** [www.skoda.co.uk](http://www.skoda.co.uk)

**E-mail:** [customerservices@skoda.co.uk](mailto:customerservices@skoda.co.uk)

Retailer's stamp