

CHRYSLER



D E L T A



EXPECT LUXURY, EVEN IN THE SMALLEST DETAILS.

The new Chrysler Delta offers luxury beyond all expectations. A luxury free from overindulgence and predictability. One that challenges perceptions to offer a combination of beauty, space, quality and innovation.

Welcome to the new Delta. Welcome to luxury liberated.



Impressive details.



HEAD RESTRAINT IN POLTRONA FRAU® LEATHER



BRIGHT LED DAY RUNNING LIGHTS



FINISHED WITH CHROMED DETAILS



STYLISH EXTERIOR DETAILING



Delta SR with Alcantara® interior

The Delta delivers luxury on every level.



ALL THE LUXURY YOU'D EXPECT - AND A LITTLE EXTRA

Discover the space and added comfort of a sliding rear seat that can recline by up to 25°, plus a range of stylish interior configurations.

S

A trim offering a practical yet deluxe finish. Discover the joy of beauty and elegance with the price tag of a compact model.

SE

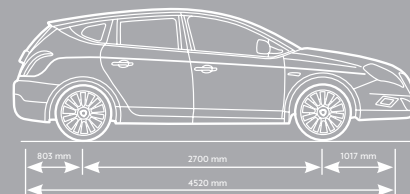
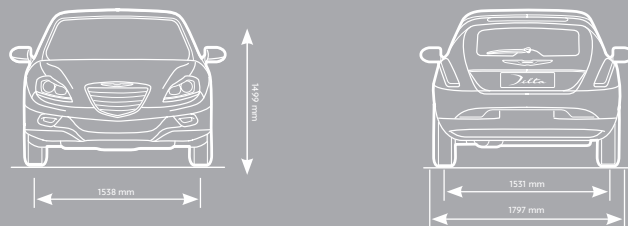
Dynamic and elegant finish thanks to the use of Carbony 3D fabric.

SR

A beautifully appointed interior combining leather and Alcantara® as standard.

LIMITED

The most luxurious configuration with seats upholstered in Poltrona Frau® leather, dashboard in hand-stitched leather and an exclusive Executive rear seat.



WHY SHOULD COMPACT MEAN COMPROMISE?

DELTA DELIVERS THE MOST SPACIOUS REAR SEATING IN ITS CLASS*.



*Based on JATO Dynamics 2011

Exceeding all expectations in just four and a half metres.



INSTANT NAV. The latest generation navigation system with 6.5" colour screen, voice recognition and SD-card map management on a single device. In addition, the NAVTEQ MAP CARE programme allows you to receive automatic map updates.



BLUE&ME™ includes hands-free connectivity with Bluetooth® interface, voice recognition, USB port, MP3-player compatibility and function for reading incoming SMS messages aloud. The steering wheel controls enable drivers to use the telephone or listen to music safely whilst driving.



BRING THE OUTSIDE IN. Enjoy stunning views through the available panoramic sunroof, engineered using the latest sound proofing materials.

A COMPACT
THAT DELIVERS
BIG IDEAS.



Delta Limited interior shown in optional beige leather.

Four and a half metres has
never offered so much.

ONE OF THE MOST SPACIOUS LUGGAGE COMPARTMENTS
IN ITS CLASS. The sliding and reclining rear seats further add to the sense
of space by increasing capacity from 380 to 465 litres.

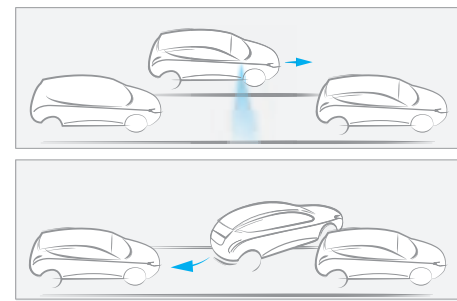


A CAR THAT'S AS MUCH ABOUT CONTENT AS IT IS ABOUT SIZE.

Why should anyone accept a car without luxurious touches? The Chrysler Delta is a compact car that's cleverly filled with all the latest innovative technological solutions combining safety, performance and driving pleasure. The impressive range of engines, together with the choice of trims and body shades also make it fully customisable. Welcome to a car that proves greatness goes far beyond size.



THE ALL-SEEING CAR.

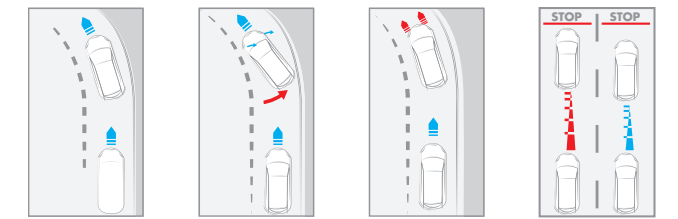


MAGIC PARKING

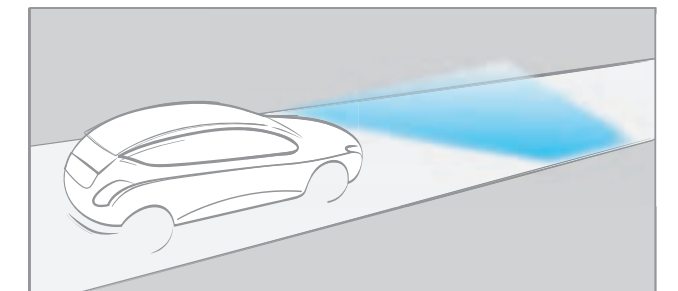
Imagine the reassurance of knowing that the Chrysler Delta can literally park itself. The innovative 'magic parking' system detects parking spaces suitable for the Delta and guides the vehicle into a perfectly parked position by acting automatically on the steering.

Advanced technology for the ultimate drive.

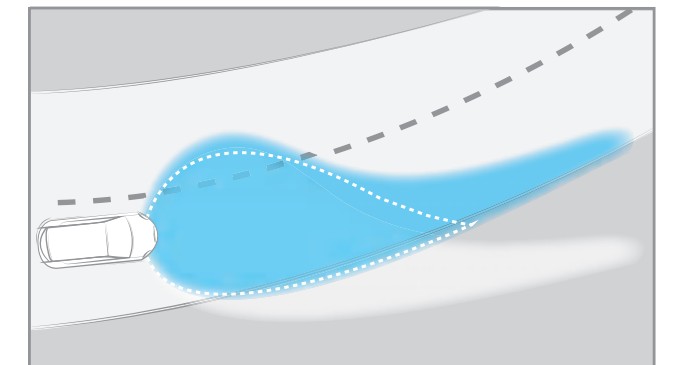
The Delta brings together technological innovation, outstanding safety and driving pleasure.



NEWLY EVOLVED HANDLING SYSTEM AND DST. An evolution of the ESP system, this new handling system guarantees perfect control of the car and absolute stability in all driving conditions. It is also married with DST (Driving Steering Torque), the active electronic steering system that makes automatic steering corrections, plus LTF (Linearisation Torque Feedback) and TTC (Torque Transfer Control) to ensure absolute control of the car, even on the most challenging roads.



YOUR PERSONAL DRIVING ADVISOR LANE WARNING SYSTEM. This optional preventative safety device activates a warning if the car strays out of lane, whilst also suggesting the correct trajectory to bring it back on track.



XENON HEADLIGHTS. The available Xenon system automatically adapts your headlight beams to match the road on which you're travelling. In addition, fog lamps have an integrated cornering function, lighting up according to the direction of the road's curve. The result? Optimum illumination wherever you travel.

A CAR THAT
CARES FOR THE
ENVIRONMENT.



The new 1.4 MultiAir 140 bhp engine combines good low-end torque delivery with an acceleration of 0 to 62.5 mph in just 9.2 seconds.
Welcome to the perfect combination of eco-friendliness and low running costs.

ONE OF THE MOST LUXURIOUSLY APPOINTED INTERIORS IN ITS CLASS.

STEP INSIDE THE DELTA LIMITED.

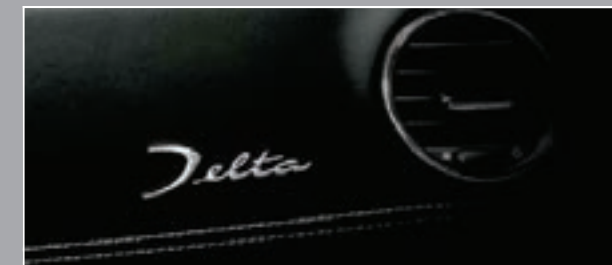


Wheels shown are optional on SR and Limited models.

Luxury freed from expectation.



The Delta Limited offers the very best expression of passion for both style and safety. Step inside and witness exceptional elegance with details including, exclusive leather covered dashboard, Bose® audio system, rear parking sensors and available with heated front seats and powered panoramic sunroof.



LUXURIOUS INTERIOR DETAILING

The exterior offers the same level of luxury. The gold Delta logo, power heated folding mirrors, dual chrome tailpipe tips, dusk sensor headlamps, and 17" alloy diamond-plated cup wheels ensure the Delta Limited will turn heads wherever it ventures.



POWER HEATED FOLDING MIRRORS

TECHNICAL SPECIFICATIONS

	1.4 T-JET 120 HP	1.4 M-AIR 140 HP	1.6 M-JET 120 HP	1.6 M-JET AUTO 120 HP	2.0 M-JET 165 HP
ENGINE					
CONFIGURATION	4 CYLINDER IN-LINE	4 CYLINDER IN-LINE	4 CYLINDER IN-LINE	4 CYLINDER IN-LINE	4 CYLINDER IN-LINE
CUBIC CAPACITY (CC)	1368	1368	1598	1598	1956
VALVES	16	16	16	16	16
BORE X STROKE (MM)	72 x 84	72 x 84	79.5 x 80.5	79.5 x 80.5	83 x 90.4
FUEL TYPE	PETROL	PETROL	DIESEL	DIESEL	DIESEL
ENGINE TYPE	SUPERCHARGED TURBO	SUPERCHARGED TURBO	SUPERCHARGED TURBO	SUPERCHARGED TURBO	SUPERCHARGED TURBO
MAX. POWER - KW (HP) @ RPM	88 (120) @ 5000	103 (140) @ 5000	88 (120) @ 4000	88 (120) @ 4000	121 (165) @ 4000
MAX. TORQUE - NM (LB/FT) @ RPM	206 (152) @ 1750	230 (170) @ 1750	300 (222) @ 1500	300 (222) @ 1500	360 (266) @ 1750
TRANSMISSION					
GEARBOX	6-SPEED MANUAL	6-SPEED MANUAL	6-SPEED MANUAL	6-SPEED SEMI-AUTOMATIC	6-SPEED MANUAL
SUSPENSION					
FRONT	INDEPENDENT WHEELS SWINGING ARMS ANCHORED TO AN AUXILIARY CROSS MEMBER, HELICOIDAL SPRINGS, DOUBLE ACTING SHOCK ABSORBERS AND ANTI-ROLL-BAR				
REAR	TORSION BEAM, HELICOIDAL SPRINGS AND SHOCK ABSORBERS				
BRAKES					
FRONT	SELF VENTILATED DISC BRAKE				
REAR	DISC BRAKE				
DIMENSIONS					
HEIGHT - MAX. (MM)	1497	1497	1497	1497	1497
LENGTH (MM)	4520	4520	4520	4520	4520
WIDTH (MM)	1797	1797	1797	1797	1797
WHEELBASE (MM)	2700	2700	2700	2700	2700
TRACK FRONT/REAR (MM)	1538/1531	1538/1531	1538/1531	1538/1531	1538/1531
EURO NCAP					
STAR RATING	5 STARS				

	1.4 T-JET 120 HP	1.4 M-AIR 140 HP	1.6 M-JET 120 HP	1.6 M-JET AUTO 120HP	2.0 M-JET 165 HP
SERVICING					
INTERVALS	18,000 MILES / 24 MONTHS	18,000 MILES / 24 MONTHS	21,000 MILES / 24 MONTHS	21,000 MILES / 24 MONTHS	21,000 MILES / 24 MONTHS
FUEL CONSUMPTION					
EC COMBINED MPG (L/100KM)	44.8 (6.3)	49.6 (5.7)	60.1 (4.7)	61.4 (4.6)	55.4 (5.1)
EC EXTRA URBAN MPG (L/100KM)	54.3 (5.2)	58.9 (4.8)	70.6 (4.0)	72.4 (3.9)	67.3 (4.2)
EC URBAN MPG (L/100KM)	34.9 (8.1)	38.7 (7.3)	48.7 (5.8)	49.6 (5.7)	42.2 (6.7)
WEIGHTS & CAPACITIES					
KERB WEIGHT MAX. (KG)	1395	1395	1485	1485	1505
GROSS VEHICLE WEIGHT (KG)	1890	1890	1980	1980	2000
MAX. PAYLOAD (KG)	495	495	495	495	495
MAX TOWING WEIGHT - BRAKED TRAILER (KG)	1300	600	1300	1300	1300
MAX TOWING WEIGHT - UNBRAKED TRAILER (KG)	500	500	500	500	500
FUEL TANK CAPACITY (LTR)	57	57	57	57	57
MINIMUM CARGO VOLUME - SEATS UP (LTR)	380	380	380	380	380
MAXIMUM CARGO VOLUME - SEATS DOWN (LTR)	1190	1190	1190	1190	1190
PERFORMANCE					
0-62.5 MPH (SECS)	9.8	9.2	10.7	10.7	8.5
MAX. SPEED (MPH)	121	126	120	120	133
EMISSIONS					
EU EMISSIONS STANDARD	EURO 5	EURO 5	EURO 5	EURO 5	EURO 5
CO ₂ (G/KM)	146	132	122	120	135
CO	0.380	0.457	0.414	0.264	0.446
HC	0.047	0.042	–	–	–
NOX	0.024	0.019	0.170	0.163	0.159
DRIVE BY (DB)	73	71	72.5	70	72

ALL 16V TURBO ENGINES COME WITH A 6-SPEED GEARBOX FOR GUARANTEED ENJOYMENT, WHILST STILL SHOWING MAXIMUM RESPECT FOR THE ENVIRONMENT.

1.4 T-JET 120 BHP

DEVELOPED AS PART OF THE FIRE RANGE, THIS ENGINE GUARANTEES THE BEST POSSIBLE PERFORMANCE WITH THE LOWEST POSSIBLE FUEL CONSUMPTION. NOW YOU CAN ENJOY A UNIQUE COMBINATION OF SPORTY LUXURY AND GREAT VALUE.

1.4 M-AIR 140 BHP START&STOP

SMOOTH PERFORMANCE AND RESPECT FOR THE ENVIRONMENT, COUPLED WITH UNRESTRICTED DRIVING PLEASURE. ENJOY MULTIAIR, THE REVOLUTIONARY INTAKE VALVE MANAGEMENT SYSTEM, WHICH ENSURES IMPROVED AIR CIRCULATION AND COMBUSTION. PLUS MAXIMUM POWER AND BETTER LOW-END TORQUE. FUEL CONSUMPTION AND EMISSIONS ARE ALSO REDUCED THANKS TO THE START&STOP SYSTEM THAT TEMPORARILY TURNS OFF THE ENGINE WHEN THE CAR COMES TO A STOP, WHILE ENSURING ALL OTHER SAFETY AND COMFORT DEVICES REMAIN FULLY OPERATIONAL.

1.6 M-JET 120 BHP

THE LATEST-GENERATION 'COMMON RAIL' IS QUIETER AND LESS POLLUTING THAN EVER BEFORE.

LIKE ALL DELTA DIESELS, THE 1.6 MULTIJET IS FITTED WITH A DPF (DIESEL PARTICULATE FILTER) FOR REDUCED EMISSIONS. ALSO AVAILABLE WITH THE 6-SPEED ELECTRONIC GEARBOX THAT GIVES YOU THE LUXURY OF CHOOSING BETWEEN THE COMFORT OF AUTOMATIC MODE OR THE FUN OF MANUAL MODE.

2.0 M-JET 165 BHP

AN ADVANCED EXAMPLE OF THE DIRECT MULTI-INJECTION 'COMMON RAIL' FAMILY OF ENGINES. ITS IMPROVED PERFORMANCE AND LOWER FUEL CONSUMPTION PUTS THIS ENGINE FIRMLY AT THE TOP OF ITS CLASS.

FOR THOSE
WHO CARE ABOUT
PERFORMANCE
AND THE PLANET

BODY COLOUR



296 ZENITH WHITE
S+SE+SR ONLY



601/5B2 ECLIPSE BLACK
S+SE+SR ONLY



422/241 OCEAN BLUE
S+SE+SR ONLY



620/241 VENTO GREY
SE+SR ONLY



284/241 TEMPESTA GREY
SE+SR ONLY



279/58B NADIR PEARL
SE+SR ONLY

BI - COLOUR

MATT BLACK ROOF: OPTIONAL ON SE + SR



910 ZENITH WHITE WITH
MATT BLACK ROOF



937 OCEAN BLUE WITH
MATT BLACK ROOF



905 VENTO GREY WITH
MATT BLACK ROOF



902 NADIR PEARL WITH
MATT BLACK ROOF

GLOSS BLACK ROOF

STANDARD ON LIMITED



317 ZENITH WHITE WITH
GLOSS BLACK ROOF



029 OCEAN BLUE WITH
GLOSS BLACK ROOF



365 VENTO GREY WITH
GLOSS BLACK ROOF



363 NADIR PEARL WITH
GLOSS BLACK ROOF



362 BRONZE SAVANNAH
WITH GLOSS BLACK ROOF



FOUNDED 1925

DESIGNED IN ITALY

MADE IN ITALY

100% COUNTRY OF ORIGIN

100% COUNTRY OF ORIGIN

100% COUNTRY OF ORIGIN

100% COUNTRY OF ORIGIN

OPTIONAL ON SE + SR

STANDARD ON LIMITED

OPTIONAL ON LIMITED

DASHBOARD

BLACK WITH SILVER STITCHING

BLACK WITH BEIGE STITCHING

BLACK WITH SILVER STITCHING

BLACK WITH BEIGE STITCHING

SEATS

BLACK

BEIGE

BLACK

BEIGE

BODY COLOUR

COLOUR COMBINATIONS ARE DEPENDENT ON THE VERSION

INTERIOR TRIM

S



353
STANDARD: PREMIUM CLOTH

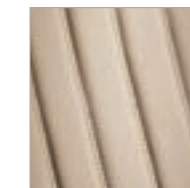
SE



173
STANDARD: BLACK CARBONY 3D FABRIC



402+212
OPTIONAL: BLACK LEATHER



449+212
OPTIONAL: BEIGE LEATHER

SR



648+727
STANDARD: BLACK ALCANTARA WITH LEATHER



402+212
OPTIONAL: BLACK LEATHER



449+212
OPTIONAL: BEIGE LEATHER

LIMITED



408
STANDARD: BLACK LEATHER



409
OPTIONAL: BEIGE LEATHER

STANDARD & OPTIONAL EQUIPMENT

	1.4 T-JET 120 S	1.4 M-AIR 140 SE	1.4 M-AIR 140 SE NAV	1.6 M-JET 120 SE
EXTERIOR				
BOOT RELEASE - ELECTRIC	●	●	●	●
DOOR HANDLES - NON-PAINTED FINISH	●	-	-	-
DOOR HANDLES - CHROME FINISH	-	●	●	●
DOOR MIRRORS - NON-PAINTED FINISH	●	-	-	-
DOOR MIRRORS - BLACK PAINTED FINISH	-	●	●	●
DOOR MIRRORS - POWER HEATED	●	●	●	●
DOOR MIRRORS - POWER HEATED FOLDING	-	-	-	-
EXHAUST - CHROME FINISHED TAILPIPE TIP	●	●	●	●
EXHAUST - DUAL CHROME TAILPIPE TIPS	-	-	-	-
FOG LAMPS - FRONT WITH CORNERING FUNCTION	●	●	●	●
FOG LAMPS - FRONT WITH CORNERING FUNCTION AND BLACK SURROUND	-	-	-	-
HEADLAMPS - DUSK SENSORS	-	○	○	○
HEADLAMPS - PROJECTOR TYPE WITH ELLIPTICAL MODULE	●	●	●	●
HEADLAMPS - XENON WITH WASHERS	-	-	-	-
PAINT - TWO-TONE (MATT BLACK ROOF) - INCLUDES SPECIAL PAINT	-	○	○	○
PAINT - TWO-TONE (GLOSS BLACK ROOF)	-	-	-	-
PAINT - SPECIAL PAINT	○	○	○	○
REMOTE KEYLESS ENTRY	●	●	●	●
SUNROOF - POWERED	-	○	○	○
WINDOW SURROUND - CHROME	-	●	●	●
WINDSCREEN WIPERS - INTERMITTENT AND CONTINUOUS FRONT	●	●	●	●
WINDSCREEN WIPERS - INTERMITTENT AND CONTINUOUS REAR	●	●	●	●
WHEELS				
FULL SIZE STEEL SPARE (WITHOUT BOSE®)	-	○	○	○
SPACE SAVER NON MATCHING ALLOY SPARE (WITH OR WITHOUT BOSE®)	-	○	○	○
TYRE INFLATION KIT (FIX & GO)	●	●	●	●
16" STEEL WITH COVERS - 205/55 R16 TYRES (404)	●	-	-	-
16" ALLOY ELEGANT 1 - 205/55 R16 TYRES (431)	-	●	●	●
17" ALLOY ELEGANT - 225/45 R17 TYRES (439)	-	○	○	○
17" ALLOY ELEGANT 2 - 225/45 R17 TYRES (432)	-	-	-	-
18" ALLOY SPORT 1 - 225/40 R18 TYRES (435)	-	-	-	-
17" ALLOY DIAMOND-PLATED CUP (421)	-	-	-	-

1.6 M-JET 120 SE NAV	1.6 M-JET 120 SE AUTO	1.6 M-JET 120 SE AUTO NAV	1.4 M-AIR 140 SR	1.4 M-AIR 140 SR NAV	1.6 M-JET 120 SR	1.6 M-JET 120 SR NAV	2.0 M-JET 165 LIMITED
●	●	●	●	●	●	●	●
-	-	-	-	-	-	-	-
●	●	●	●	●	●	●	●
-	-	-	-	-	-	-	-
●	●	●	●	●	●	●	●
●	●	●	●	●	●	●	-
-	-	-	-	-	-	-	●
●	●	●	●	●	●	●	-
-	-	-	-	-	-	-	●
○	○	○	○	○	○	○	●
●	●	●	○	○	○	○	○
-	-	-	-	-	-	-	●
○	○	○	○	○	○	○	●
●	●	●	●	●	●	●	●
○	○	○	○	○	○	○	○
●	●	●	●	●	●	●	●
●	●	●	●	●	●	●	●
○	○	○	○	○	○	○	○
○	○	○	○	○	○	○	○
●	●	●	●	●	●	●	●
-	-	-	-	-	-	-	-
○	○	○	○	○	○	○	○
-	-	-	●	●	●	●	-
-	-	-	○	○	○	○	○
-	-	-	-	-	-	-	●

● Standard ○ Optional - Not available



16" INCH STEEL WHEEL STANDARD ON S (404)



16" ALLOY WHEEL STANDARD ON SE (431)



17" ALLOY WHEEL OPTIONAL ON SE (439)



17" ALLOY WHEEL STANDARD ON SR (432)



17" ALLOY WHEEL STANDARD ON LIMITED (421)



18" ALLOY WHEEL OPTIONAL ON SR AND LIMITED (435)

THE GREATEST
CARE GOES INTO
EVERY DETAIL



STANDARD & OPTIONAL EQUIPMENT

	1.4 T-JET 120 S	1.4 M-AIR 140 SE	1.4 M-AIR 140 SE NAV	1.6 M-JET 120 SE
INTERIOR				
12V POWER OUTLET ON TUNNEL	●	●	●	●
12V POWER SOCKET IN THE BOOT	-	-	-	-
AIR CONDITIONING - MANUAL	●	●	●	●
AIR CONDITIONING - BI-ZONE AUTOMATIC	-	○	○	○
AIR VENTS - REAR	-	●	●	●
AMBIENT LIGHTING	-	●	●	●
BOOT ILLUMINATION	●	●	●	●
CLIMATE CONTROL SURROUND - SILVER	●	●	●	●
CLIMATE CONTROL SURROUND - BLACK	-	-	-	-
CRUISE CONTROL	○	○	○	○
CUPHOLDERS - TWO	●	●	●	●
DASHBOARD - PREMIUM FINISH	●	-	-	-
DASHBOARD - LUXURY FINISH	-	●	●	●
DASHBOARD - LEATHER COVERED	-	○	○	○
DOOR COVERING - PREMIUM FABRIC	●	-	-	-
DOOR COVERING - LUXURY FABRIC	-	●	●	●
DOOR COVERING - LEATHER	-	○	○	○
DUALDRIVE POWER STEERING FUNCTION	●	●	●	●
GEAR GAITER MATERIAL - LEATHER	-	○	○	○
GEAR SHIFT KNOB - LEATHER WRAPPED	-	-	-	-
GLOVEBOX - ILLUMINATED AND SLOW SPRUNG	●	●	●	●
GRAB HANDLES - THREE SLOW SPRUNG	●	●	●	●
ILLUMINATION - FRONT WITH DOUBLE-SPOT AND DIMMER	●	●	●	●
ILLUMINATION - REAR WITH SPOT AND DIMMER	●	●	●	●
INSTRUMENT PANEL - SILVER SURROUND	●	●	●	●
INSTRUMENT PANEL - BLACK SURROUND	-	-	-	-
LUGGAGE COVER	●	●	●	●
MIRROR - REAR VIEW WITH ELECTROCHROMATIC DIMMING	-	○	○	○
MULTI-FUNCTION DISPLAY INSTRUMENT PANEL	●	●	●	●

1.6 M-JET 120 SE NAV	1.6 M-JET 120 SE AUTO	1.6 M-JET 120 SE AUTO NAV	1.4 M-AIR 140 SR	1.4 M-AIR 140 SR NAV	1.6 M-JET 120 SR	1.6 M-JET 120 SR NAV	2.0 M-JET 165 LIMITED
●	●	●	●	●	●	●	●
-	-	-	-	-	-	-	●
●	●	●	-	-	-	-	-
○	○	○	●	●	●	●	●
●	●	●	●	●	●	●	●
●	●	●	●	●	●	●	●
●	●	●	●	●	●	●	-
-	-	-	-	-	-	-	●
○	○	○	●	●	●	●	●
●	●	●	●	●	●	●	●
-	-	-	-	-	-	-	-
●	●	●	●	●	●	●	-
○	○	○	○	○	○	○	●
-	-	-	-	-	-	-	-
●	●	●	●	●	●	●	-
○	○	○	○	○	○	○	●
-	-	-	-	-	-	-	●
●	●	●	●	●	●	●	●
●	●	●	●	●	●	●	●
●	●	●	●	●	●	●	●
●	●	●	●	●	●	●	-
-	-	-	-	-	-	-	●
●	●	●	●	●	●	●	●
○	○	○	○	○	○	○	●
●	●	●	●	●	●	●	●

● Standard ○ Optional - Not available

STANDARD & OPTIONAL EQUIPMENT

	1.4 T-JET 120 S	1.4 M-AIR 140 SE	1.4 M-AIR 140 SE NAV	1.6 M-JET 120 SE
REFRIGERATED COMPARTMENT - FRONT	-	●	●	●
STEERING WHEEL - HEIGHT ADJUSTABLE	●	●	●	●
STEERING WHEEL - PREMIUM FINISH	●	-	-	-
STEERING WHEEL - LEATHER WRAPPED	-	●	●	●
STEERING WHEEL - LEATHER WITH STITCHING	-	-	-	-
STEERING WHEEL CONTROLS WITH 6-BUTTONS	●	●	-	●
STEERING WHEEL CONTROLS WITH 8-BUTTONS	-	○	●	○
TRIP COMPUTER WITH OUTSIDE TEMPERATURE DISPLAY	●	●	●	●
VANITY MIRROR - ILLUMINATED DRIVER	●	●	●	●
VANITY MIRROR - ILLUMINATED PASSENGER	●	●	●	●
WINDOWS - POWER FRONT	●	●	●	●
WINDOWS - POWER REAR	●	●	●	●
SAFETY				
3RD CENTRAL STOP LAMP MOUNTED ON REAR SPOILER	●	●	●	●
AIRBAG - DRIVER	●	●	●	●
AIRBAG - FRONT PASSENGER	●	●	●	●
AIRBAG - FRONT PASSENGER SIDE DE-ACTIVATION	●	●	●	●
AIRBAG - FRONT SIDE	●	●	●	●
AIRBAG - WINDOW	●	●	●	●
ALARM	●	●	●	●
BRAKES - FRONT DISCS VENTILATED	●	●	●	●
BRAKES - REAR DISCS	●	●	●	●
CENTRAL LOCKING	●	●	●	●
DAY RUNNING LIGHTS - BRIGHT LEDS	●	●	●	●
DYNAMIC STABILITY CONTROL WITH HILL HOLDER	●	●	●	●
FOLLOW ME HOME FUNCTION	●	●	●	●
AUTOMATIC LOCKING	●	●	●	●
HEADRESTS - ANTI-WHIPLASH FRONT	●	●	●	●
HEADRESTS - HEIGHT ADJUSTABLE FRONT	●	●	●	●
HEADRESTS - THREE REAR	●	●	●	●
HORN - BI-TONAL	●	●	●	●
IMMOBILISER	●	●	●	●
ISOFIX - THREE REAR SEAT ATTACHMENTS	●	●	●	●
LANE DEPARTURE CONTROL	-	○	○	○
MAGIC PARKING	-	○	○	○

1.6 M-JET 120 SE NAV	1.6 M-JET 120 SE AUTO	1.6 M-JET 120 SE AUTO NAV	1.4 M-AIR 140 SR	1.4 M-AIR 140 SR NAV	1.6 M-JET 120 SR	1.6 M-JET 120 SR NAV	2.0 M-JET 165 LIMITED
●	●	●	●	●	●	●	●
●	●	●	●	●	●	●	●
-	-	-	-	-	-	-	-
●	●	●	●	●	●	●	-
-	-	-	-	-	-	-	●
-	●	-	-	-	-	-	-
●	○	●	●	●	●	●	●
●	●	●	●	●	●	●	●
●	●	●	●	●	●	●	●
●	●	●	●	●	●	●	●
●	●	●	●	●	●	●	●
●	●	●	●	●	●	●	●
●	●	●	●	●	●	●	●
●	●	●	●	●	●	●	●
●	●	●	●	●	●	●	●
●	●	●	●	●	●	●	●
●	●	●	●	●	●	●	●
●	●	●	●	●	●	●	●
●	●	●	●	●	●	●	●
●	●	●	●	●	●	●	●
●	●	●	●	●	●	●	●
●	●	●	●	●	●	●	●
●	●	●	●	●	●	●	●
●	●	●	●	●	●	●	●
●	●	●	●	●	●	●	●
●	●	●	●	●	●	●	●
○	○	○	○	○	○	○	○
○	○	○	○	○	○	○	○

● Standard ○ Optional - Not available

STANDARD & OPTIONAL EQUIPMENT

	1.4 T-JET 120 S	1.4 M-AIR 140 SE	1.4 M-AIR 140 SE NAV	1.6 M-JET 120 SE
OCCUPANT SENSOR - FRONT PASSENGER	●	●	●	●
PARKING SENSORS - REAR	○	○	○	○
POWER DEAD LOCKS	●	●	●	●
PRIVACY GLASS	●	●	●	●
SEATBELT PRE-TENSIONERS - FRONT	●	●	●	●
SEATBELTS - 5 - THREE POINT	●	●	●	●
TYRE PRESSURE MONITORING SYSTEM	-	-	-	-
AUDIO				
BOSE® AUDIO SYSTEM	-	○	○	○
BLUE & ME WITH USB MEDIA PLAYER AND AUX-IN	-	○	●	○
NAVIGATION SYSTEM - EUROPEAN MAPS	-	-	●	-
RADIO WITH CD AND MP3 COMPATIBILITY	●	●	●	●
SEATING				
ARMREST - REAR SEAT	-	○	○	○
LOGO - FRONT HEADRESTS	-	●	●	●
REAR SEATS - 60/40 SPLIT WITH SLIDING AND RECLINING FUNCTION	●	●	●	●
REAR SEATS - 60/40 SPLIT WITH RECLINING FUNCTION EXECUTIVE STYLE	-	-	-	-
SEATS - DRIVER'S HEIGHT ADJUSTABLE	●	●	●	●
SEATS - DRIVER'S LUMBAR ADJUSTMENT	-	●	●	●
SEATS - ELECTRICALLY ADJUSTABLE FRONT	-	-	-	-
SEATS - HEATED FRONT	-	○	○	○
SEATS - PASSENGER'S HEIGHT ADJUSTABLE	●	●	●	●
SEATS - SEAT-BACK POCKET PASSENGER SIDE	-	●	●	●
SEATS - UPHOLSTERY - PREMIUM FABRIC	●	-	-	-
SEATS - UPHOLSTERY - PREMIUM CARBONY 3D FABRIC	-	●	●	●
SEATS - UPHOLSTERY - ALCANTARA WITH LEATHER	-	-	-	-
SEATS - UPHOLSTERY - LUXURY LEATHER WITH PIPING	-	-	-	-
SEATS - LEATHER UPGRADE (FULL-SEATS + REAR ARMREST + DOOR TRIM + GEAR GAITER + DASHBOARD)	-	○	○	○
SEATS - LEATHER UPGRADE (PARTIAL - SEATS ONLY + REAR ARMREST)	-	○	○	○

1.6 M-JET 120 SE NAV	1.6 M-JET 120 SE AUTO	1.6 M-JET 120 SE AUTO NAV	1.4 M-AIR 140 SR	1.4 M-AIR 140 SR NAV	1.6 M-JET 120 SR	1.6 M-JET 120 SR NAV	2.0 M-JET 165 LIMITED
●	●	●	●	●	●	●	●
○	○	○	○	○	○	○	●
●	●	●	●	●	●	●	●
●	●	●	●	●	●	●	●
●	●	●	●	●	●	●	●
●	●	●	●	●	●	●	●
-	-	-	-	-	-	-	●
○	○	○	○	○	○	○	○
●	○	●	●	●	●	●	●
●	-	●	-	●	-	●	●
●	●	●	●	●	●	●	●
○	○	○	●	●	●	●	●
●	●	●	●	●	●	●	●
●	●	●	●	●	●	●	●
-	-	-	-	-	-	-	●
○	○	○	○	○	○	○	○
●	●	●	●	●	●	●	●
●	●	●	●	●	●	●	●
-	-	-	-	-	-	-	-
●	●	●	-	-	-	-	-
-	-	-	●	●	●	●	-
-	-	-	-	-	-	-	●
○	○	○	○	○	○	○	-
○	○	○	○	○	○	○	-

This brochure is a publication of Chrysler Group LLC . All product illustrations and specifications are subject to change. Chrysler Group LLC reserves the right to make alterations to the described models and services — at any time without prior notice or obligation — which are considered necessary for the purpose of product improvement or for reasons of design and/or marketing. Bluetooth® is a registered trademark of Bluetooth SIG, Inc. Fuel consumption figures are strictly generated in accordance with Testing Directive 93/116/EC; they are designed to maintain strict comparability and may not be fully representative of real-life driving. For further information, please visit www.vca.gov.uk. When your Chrysler vehicle has reached the end of its life, we will take it back and dispose of it in an environmentally friendly manner in accordance with the EU Directive on End-of-Life Vehicles.

● Standard ○ Optional - Not available

BRINGING BACK
THE JOY OF
GRAND TOURING.



CHRYSLER



LUXURY LIBERATED

www.chrysler.co.uk



CHRDELMY11