

SIMPLY CLEVER

ŠKODA



The ŠKODA Fabia



Effective: 1st June 2011

Welcome to the Fabia

The Fabia; what is it?

The Fabia is a small city car that offers you the space and versatility required for everyday life. With space for 5 people and still enough room in the back for your luggage, the Fabia is the ideal small family car. It's as happy doing 30mph through town on the school run as it is doing 70mph on the motorway and of course, at its core is the traditional Škoda offer of value for money and that legendary "extra bit of car".

Versatility across the range.

Unlike many of its competitors, the Fabia is available in hatch and estate. With eight different trim levels, five petrol engines, four diesel engines and a DSG gearbox, there will be a Fabia in the range that suits you.

Driving Position. As we spend more and more time in our cars, being comfortable is essential. With this in mind, the Fabia has been designed with a high driving position, allowing greater visibility of the road ahead, more headroom, and not to mention making it easier for you to get in and out of. From entry level the Fabia also comes with an adjustable driver's seat and a height and reach adjustable steering wheel so you will find getting a comfortable and safe driving position easy.

Boot space. The Fabia continues to impress even in the boot where, with the seats up, the hatch offers 315 litres of space while the estate offers a whopping 505 litres. With the seats down, the hatch and estate have 1,180 litres and 1,485 litres of space respectively. So regardless of whether it's the weekly shop, the annual holiday, or a trip to the garden centre, the Fabia's boot won't be lacking the space you need.

Music. In addition to the standard radio, every Fabia comes with a 3.5mm aux in socket. With the addition of a cable, this allows MP3 players to be connected to the car, meaning that you can listen to your MP3 player through the car radio. There is also an optional MDI (Multi Device Interface) cable. This enables you to connect a variety of music players through the purchase of additional cables (through retailer supplied accessories) from ipods to devices with USB or mini USB ports.

SE Plus. We are delighted to announce a new trim level for the Fabia range. The special edition Fabia SE Plus offers you the most popular options built into the standard specification of the car, at a fantastic price.

To ensure you get great value for money, we have packaged together our new Kristal upholstery with sunset glass, climate control, a multi-function steering wheel, rear electric windows and a multi device interface, just to mention a few items!

These additional features offer value in excess of £1,000 over the standard Fabia SE, but you will pay much less!

More details about the Fabia SE Plus can be found on page 9.



The Fabia was refreshed in March 2010, giving the car a more dynamic appearance. The main changes were to the front, a redesigned, wider front grille and newly designed headlights optically widen the car, strengthening the horizontal lines and increasing its road presence. The sculpted bonnet and wraparound windscreen with black A pillars and 'floating' roof remain, providing an air of style, elegance and contemporary design.

The modern exterior is matched by the updated interior. Newly designed stereos, steering wheels and upholsteries improve the feeling of style and quality in the Fabia - soft touch surfaces and ergonomically laid out controls make the car a joy to drive. With outstanding boot space, headroom and legroom, not to mention lots of room for luggage, driver and passengers can travel in comfort.

The biggest change for Fabia was under the bonnet. Cleaner and more efficient petrol and diesel engines offer the driver a suitable engine for every situation. TSI petrol engines offer a great blend of power and torque combined with low CO₂ and improved fuel economy, whilst the range of 'Common Rail' diesel engines emit just 109g/km of CO₂, helping to reduce the impact on the environment.

The new Fabia GreenLine II is fitted with technological advancements such as a Stop/start system, gear change recommendation and energy recovery, improving economy and lowering CO₂ emissions even further. These advancements mean the Fabia GreenLine II emits just 89 g/km CO₂, with a combined fuel economy of 83.1 mpg making it the most economical Škoda ever!

So now the introduction to the Fabia is over, why not take a look in a little more detail?

www.skodafabia-vrs.co.uk



Lovely OR **Mean?**
Which are you?

The Škoda Fabia S

Hatchback	CO ₂ (g/km)	VED Band**	Insurance Group (50)	Recommended Basic	VAT	RRP	Recommended OTR*	Business user information	
								BiK 2011/12	P11D Value
1.2 6V 60PS 5spd	132	E	3E	£7,666.67	£1,533.33	£9,200.00	£9,880.00	16%	£9,710.00
1.2 12V 69PS 5spd	128	D	4E	£8,212.50	£1,642.50	£9,855.00	£10,420.00	15%	£10,365.00
1.2 TSI 105PS 7spd DSG	124	D	12E	£9,870.83	£1,974.17	£11,845.00	£12,410.00	15%	£12,355.00
1.6 TDI CR 75PS 5spd DPF	109	B	7E	£9,404.17	£1,880.83	£11,285.00	£11,850.00	13%	£11,795.00
1.6 TDI CR 90PS 5spd DPF	109	B	11E	£9,895.83	£1,979.17	£11,875.00	£12,440.00	13%	£12,385.00
Estate									
1.2 12V 69PS 5spd	128	D	4E	£8,725.00	£1,745.00	£10,470.00	£11,035.00	15%	£10,980.00
1.2 TSI 105PS 7spd DSG	124	D	12E	£10,383.33	£2,076.67	£12,460.00	£13,025.00	15%	£12,970.00
1.6 TDI CR 75PS 5spd DPF	109	B	7E	£9,916.67	£1,983.33	£11,900.00	£12,465.00	13%	£12,410.00
1.6 TDI CR 90PS 5spd DPF	109	B	11E	£10,408.33	£2,081.67	£12,490.00	£13,055.00	13%	£13,000.00

Standard Equipment				
15" 'Satellite' steel wheels (6J x 15"195/55 R15 85H)	Body coloured bumpers	Exterior temperature gauge	Interior rear view mirror with dimming facility	Remote central locking
1.5-litre drinks holder in front door panels	Category 2 electronic Immobiliser	Folding grab handles in the roof frame	Manually adjustable door mirrors	Retractable parcel shelf (Estate only)
3 point seat belts with seat belt tensioners and height adjustment (front)	Delayed interior lighting	Halogen headlights	Manually controlled heating system	Roof aerial with second antenna in windscreen for FM2 signal
3 point seat belts in the rear	Driver and passenger front and side airbags with passenger airbag de-activation switch	Headlight range adjustment	Pollen filter	Split folding rear seats (60%/40%)
3.5mm aux. socket (for MP3 players etc.)	Driver and passenger vanity mirrors	Heated rear window	Power steering	Ticket holder
4 spoke steering wheel	Driver door mirror (aspherical) providing an increased field of view	Height adjustable driver's seat	Preparation for ISOFIX	Tyre repair kit (no spare wheel) †
ABS (Anti-lock Braking System)	Driver seat belt warning light	Height adjustable head restraints (front & rear x2)	Radio 'Swing' 2DIN with single CD and 4 speakers (can play MP3 recordings)	Windscreen wiper with Intermittent control (4 speed)
Inc. EBC + Dual Rate Brake Booster	Electric front windows	Height and reach adjustable steering wheel	Rear drum brakes	
Black door mirrors and door handles	ESP Inc. ABS +ASR+EDL+HBA (1.2 TSI 105 DSG only)	HHC (Hill hold control) (1.2 TSI 105PS DSG only)	Rear fog light	
			Rear wiper with intermittent control	

For offers visit www.skoda.co.uk/offers

† Temporary spare wheel or temporary 'Space saver' spare wheel can be ordered as an option. If added the tyre repair kit will be removed. For further details please check page 24.



Band	CO ₂ (g/km)	First 12 Months ¹	Standard VED ²
A	Up to 100	£0	£0
B	101 - 110	£0	£20
C	111 - 120	£0	£30
D	121 - 130	£0	£95
E	131 - 140	£115	£115
F	141 - 150	£130	£130
G	151 - 165	£165	£165
H	166 - 175	£265	£190
I	176 - 185	£315	£210
J	186 - 200	£445	£245
K	201 - 225	£580	£260
L	226 - 255	£790	£445
M	Over 255	£1,000	£460

OTR (Recommended On The Road)

* Recommended 'On the Road' prices include delivery, 12 months Road Fund Licence, DVLA First registration Fee (at £55), and apply to the United Kingdom only.

VED (Vehicle Excise Duty)

** All vehicles will be subject to Vehicle Excise Duty based on the fuel type of the vehicle and its carbon dioxide (CO₂) emissions level, measured in grams per kilometre (g/km). Due to changes in vehicle emissions data, CO₂ figures may differ on these vehicles if taken from current Skoda UK stock. The VED bands are shown in the table opposite.

¹First year vehicle licence rates for petrol and diesel cars purchased on or after 1st April 2011. First year rate or 'showroom tax' applies to new car purchases only.

² Rate reverts to the Government's applicable Standard VED rate in subsequent years.

Please confirm figures with your Skoda retailer. Edition: UK 30th May 2011. VAT is calculated at 20%. For fuel consumption data, please refer to page 26-27.

Company car tax is based on your cars carbon dioxide emissions. The higher the car's emissions, the higher its tax liability. When a company car is made available for private use a 'Benefit in Kind' value is calculated for tax purposes.

To help you work out your tax liability please refer to page 30.

P11D (Expenses and Benefits)

The P11D value is calculated by taking the On The Road (OTR) price for the vehicle, less the Road Fund Licence (RFL) and First Registration Fee (FRF).

BIK (Benefit in Kind)
The BIK percentage value is based on the CO₂ emissions of the vehicle for the current tax year 2011/2012.

Škoda GreenLine II Technology



A combination of innovative technology and practical design features ensure that the Fabia GreenLine II is highly efficient and environmentally friendly. Below is an explanation of the technology present in the Fabia GreenLine II and how it works to keep fuel costs down and environmental impact low.



1.2 TDI CR 75PS DPF. The economical three cylinder 1.2 TDI diesel engine in the GreenLine II produces just 89 g/km CO₂ which means road tax is totally free!

The Fabia GreenLine II has a combined fuel economy of 83.1 mpg, making the Fabia GreenLine II the most frugal Škoda ever made!



Energy Recovery. Energy recovery is the process of converting kinetic energy (energy created through movement) back into usable electricity, which is either stored in the battery, or immediately used again by electrical components on the vehicle.

Depending on driving style, electrical energy is supplied to the vehicle by the alternator or directly by the battery. The principle of energy recovery is to reduce the load on the engine and therefore contribute to lower emissions and reduced fuel consumption.



Aerodynamics. One of the simplest ways to improve fuel efficiency and reduce emissions, is to create a more aero-dynamic vehicle. The Fabia GreenLine II model has changes to the rear spoiler that improve the car's efficiency without compromising on style.

The Fabia has slightly lowered suspension to facilitate better airflow.

To keep the weight and drag of the GreenLine II models down to a minimum and thus ensure the model is as efficient as possible, there is a reduced list of options available.

However, the comfort and safety of all occupants has not been compromised and so important features like airbags and air conditioning have been retained.



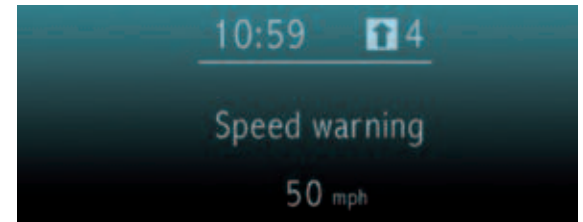
Low profile tyres. The Fabia GreenLine II has 15" 'Antares' alloys (6Jx15" 185/60 R15 84T) these lighter alloy wheels with low rolling resistance tyres have a higher prescribed air pressure to reduce friction.



Stop/start System. This innovative system turns off the engine when it is not needed, for example when the driver is stopped at traffic lights or in heavy traffic.

When a normal car is stationary, the engine will idle, which in turn consumes fuel and generates emissions. The Stop/start system cleverly cuts out this unnecessary work by stopping the engine automatically when the car is stationary, in neutral and the clutch pedal is released.

The Stop/start system does not inhibit a quick getaway either. As soon as the driver presses the clutch to put the vehicle in gear, the engine immediately starts up so acceleration is as instant as if the car had been idling.



Gear change recommendations. The recommended gear feature on the trip computer or Maxi-dot display shows the driver whether the gear they are in is appropriate or whether they need to change up or down.

The aim is to help the driver achieve optimum engine speed and reduce fuel consumption.

The Škoda Fabia GreenLine II

Hatchback	CO ₂ (g/km)	VED Band**	Insurance Group (50)	Recommended Basic	VAT	RRP	Recommended OTR*	Business user information BIK 2011/12	P11D Value
1.2 TDI CR 75PS 5spd DPF	89	A	8E	£11,033.33	£2,206.67	£13,240.00	£13,805.00	13%	£13,750.00
Estate									
1.2 TDI CR 75PS 5spd DPF	89	A	8E	£11,545.83	£2,309.17	£13,855.00	£14,420.00	13%	£14,365.00

Standard Equipment (over Fabia S)

15" 'Antares' alloys with anti theft locking wheel bolts (6x15" 185/60 R15 84T) Low rolling resistance tyres
Additional 4 speakers in rear
Black roof rails (Estate only)
Body coloured handles and door mirrors
Category 1 alarm with tilt sensor
Chrome surround on radiator grille
Cruise control
Electrically heated and adjustable door mirrors
Energy recovery
ESP Inc. ABS+ASR+EDL+HBA
Front fog lights
Gear change recommendation
Glovebox cover

Halogen headlights with DE module
Height adjustable passenger seat
Hill hold control
Load securing loops in luggage space
Lowered suspension
Manual air conditioning
MDI (Multi device interface) and cable for connecting MP3 players †
Rear disc brakes (Hatch)
Rear drum brakes (Estate)
Side and rear windows in tinted glass
Stop/start function
Tinted windscreen
Trip computer
Tyre pressure monitor (TPM)
Tyre repair kit (spare wheel not available)

For offers visit www.skoda.co.uk/offers

† Retailer supplied



Band	CO ₂ (g/km)	First 12 Months ¹	Standard VED ²
A	Up to 100	£0	£0
B	101 - 110	£0	£20
C	111 - 120	£0	£30
D	121 - 130	£0	£95
E	131 - 140	£115	£115
F	141 - 150	£130	£130
G	151 - 165	£165	£165
H	166 - 175	£265	£190
I	176 - 185	£315	£210
J	186 - 200	£445	£245
K	201 - 225	£580	£260
L	226 - 255	£790	£445
M	Over 255	£1,000	£460

OTR (Recommended On The Road)

* Recommended 'On the Road' prices include delivery, 12 months Road Fund Licence, DVLA First registration Fee (at £55), and apply to the United Kingdom only.

VED (Vehicle Excise Duty)

** All vehicles will be subject to Vehicle Excise Duty based on the fuel type of the vehicle and its carbon dioxide (CO₂) emissions level, measured in grams per kilometre (g/km). Due to changes in vehicle emissions data, CO₂ figures may differ on these vehicles if taken from current Škoda UK stock. The VED bands are shown in the table opposite.

¹ First year vehicle licence rates for petrol and diesel cars purchased on or after 1st April 2011. First year rate or 'showroom tax' applies to new car purchases only.

² Rate reverts to the Government's applicable Standard VED rate in subsequent years.

Please confirm figures with your Škoda retailer. Edition: UK 30th May 2011. VAT is calculated at 20%. For fuel consumption data, please refer to page 26-27.

Company car tax is based on your cars carbon dioxide emissions. The higher the car's emissions, the higher its tax liability. When a company car is made available for private use a 'Benefit in Kind' value is calculated for tax purposes.

To help you work out your tax liability please refer to page 30.

P11D (Expenses and Benefits)

The P11D value is calculated by taking the On The Road (OTR) price for the vehicle, less the Road Fund Licence (RFL) and First Registration Fee (FRF).

BIK (Benefit in Kind)
The BIK percentage value is based on the CO₂ emissions of the vehicle for the current tax year 2011/2012.

The Škoda Fabia SE

								Business user information	
Hatchback	CO ₂ (g/km)	VED Band**	Insurance Group (50)	Recommended Basic	VAT	RRP	Recommended OTR*	BiK 2011/12	P11D Value
1.2 12V 69PS 5spd	128	D	5E	£8,991.67	£1,798.33	£10,790.00	£11,355.00	15%	£11,300.00
1.2 TSI 86PS 5spd	121	D	9E	£9,504.17	£1,900.83	£11,405.00	£11,970.00	15%	£11,915.00
1.2 TSI 105PS 5spd	124	D	13E	£10,054.17	£2,010.83	£12,065.00	£12,630.00	15%	£12,575.00
1.2 TSI 105PS 7spd DSG	124	D	13E	£10,650.00	£2,130.00	£12,780.00	£13,345.00	15%	£13,290.00
1.6 TDI CR 75PS 5spd DPF	109	B	8E	£10,183.33	£2,036.67	£12,220.00	£12,785.00	13%	£12,730.00
1.6 TDI CR 90PS 5spd DPF	109	B	12E	£10,675.00	£2,135.00	£12,810.00	£13,375.00	13%	£13,320.00
1.6 TDI CR 105PS 5spd DPF	109	B	14E	£10,862.50	£2,172.50	£13,035.00	£13,600.00	13%	£13,545.00
Estate									
1.2 12V 69PS 5spd	128	D	5E	£9,700.00	£1,940.00	£11,640.00	£12,205.00	15%	£12,150.00
1.2 TSI 86PS 5spd	121	D	9E	£10,212.50	£2,042.50	£12,255.00	£12,820.00	15%	£12,765.00
1.2 TSI 105PS 5spd	124	D	13E	£10,762.50	£2,152.50	£12,915.00	£13,480.00	15%	£13,425.00
1.2 TSI 105PS 7spd DSG	124	D	13E	£11,358.33	£2,271.67	£13,630.00	£14,195.00	15%	£14,140.00
1.6 TDI CR 75PS 5spd DPF	109	B	8E	£10,891.67	£2,178.33	£13,070.00	£13,635.00	13%	£13,580.00
1.6 TDI CR 90PS 5spd DPF	109	B	12E	£11,383.33	£2,276.67	£13,660.00	£14,225.00	13%	£14,170.00
1.6 TDI CR 105PS 5spd DPF	109	B	14E	£11,570.83	£2,314.17	£13,885.00	£14,450.00	13%	£14,395.00

Standard Equipment (over Fabia S)

15" 'Antares' alloys with anti-theft locking wheel bolts (6J x 15" 195/55 R15 85H)	Glovebox cover
12V socket in boot (Estate only)	Halogen projector headlights with DE module
Additional 4 speakers in rear	Height adjustable passenger seat
Black roof rails (Estate only)	Leather gearknob (DSG only)
Body coloured door handles and mirrors	Load securing loops in luggage space
Category 1 alarm with tilt sensor	Manual air conditioning
Chrome surround on radiator grille	Side and rear windows in tinted glass
Electrically heated and adjustable door mirrors	Stowage box in boot
	Tinted windscreen
	Trip computer

For offers visit www.skoda.co.uk/offers



The Škoda Fabia SE Plus

								Business user information	
Hatchback	CO ₂ (g/km)	VED Band**	Insurance Group (50)	Recommended Basic	VAT	RRP	Recommended OTR*	BiK 2011/12	P11D Value
1.2 12V 69PS 5spd	128	D	5E	£9,483.33	£1,896.67	£11,380.00	£11,945.00	15%	£11,890.00
1.2 TSI 86PS 5spd	121	D	9E	£9,995.83	£1,999.17	£11,995.00	£12,560.00	15%	£12,505.00
1.2 TSI 105PS 5spd	124	D	13E	£10,545.83	£2,109.17	£12,655.00	£13,220.00	15%	£13,165.00
1.2 TSI 105PS 7spd DSG	124	D	13E	£11,141.67	£2,228.33	£13,370.00	£13,935.00	15%	£13,880.00
1.6 TDI CR 75PS 5spd DPF	109	B	8E	£10,675.00	£2,135.00	£12,810.00	£13,375.00	13%	£13,320.00
1.6 TDI CR 90PS 5spd DPF	109	B	12E	£11,166.67	£2,233.33	£13,400.00	£13,965.00	13%	£13,910.00
1.6 TDI CR 105PS 5spd DPF	109	B	14E	£11,354.17	£2,270.83	£13,625.00	£14,190.00	13%	£14,135.00

Estate									
	CO ₂ (g/km)	VED Band**	Insurance Group (50)	Recommended Basic	VAT	RRP	Recommended OTR*	BiK 2011/12	P11D Value
1.2 12V 69PS 5spd	128	D	5E	£10,191.67	£2,038.33	£12,230.00	£12,795.00	15%	£12,740.00
1.2 TSI 86PS 5spd	121	D	9E	£10,704.17	£2,140.83	£12,845.00	£13,410.00	15%	£13,355.00
1.2 TSI 105PS 5spd	124	D	13E	£11,254.17	£2,250.83	£13,505.00	£14,070.00	15%	£14,015.00
1.2 TSI 105PS 7spd DSG	124	D	13E	£11,850.00	£2,370.00	£14,220.00	£14,785.00	15%	£14,730.00
1.6 TDI CR 75PS 5spd DPF	109	B	8E	£11,383.33	£2,276.67	£13,660.00	£14,225.00	13%	£14,170.00
1.6 TDI CR 90PS 5spd DPF	109	B	12E	£11,875.00	£2,375.00	£14,250.00	£14,815.00	13%	£14,760.00
1.6 TDI CR 105PS 5spd DPF	109	B	14E	£12,062.50	£2,412.50	£14,475.00	£15,040.00	13%	£14,985.00

Standard Equipment (over Fabia SE)

4 spoke leather multi function steering wheel with radio controls	Kristal upholstery	Storage boxes under front seats
Black protective side mouldings	MDI (Multi Device Interface) and cable for connecting MP3 players	Sunset glass
Climate control air conditioning	Net below parcel shelf (Hatch only)	
Floor Mats	Rear electric windows	

For offers visit www.skoda.co.uk/offers

With the standard 'Antares' wheels it is possible to order a full size steel wheel as an option. When ordering the optional 16" 'Atria' or 'Elba' alloy wheels, only a temporary 'Space saver' option is then available. For further information please see your retailer.

Band	CO ₂ (g/km)	First 12 Months ¹	Standard VED ²
A	Up to 100	£0	£0
B	101 - 110	£0	£20
C	111 - 120	£0	£30
D	121 - 130	£0	£95
E	131 - 140	£115	£115
F	141 - 150	£130	£130
G	151 - 165	£165	£165
H	166 - 175	£265	£190
I	176 - 185	£315	£210
J	186 - 200	£445	£245
K	201 - 225	£580	£260
L	226 - 255	£790	£445
M	Over 255	£1,000	£460

OTR (Recommended On The Road)

* Recommended 'On the Road' prices include delivery, 12 months Road Fund Licence, DVLA First registration Fee (at £55), and apply to the United Kingdom only.

VED (Vehicle Excise Duty)

** All vehicles will be subject to Vehicle Excise Duty based on the fuel type of the vehicle and its carbon dioxide (CO₂) emissions level, measured in grams per kilometre (g/km). Due to changes in vehicle emissions data, CO₂ figures may differ on these vehicles if taken from current Škoda UK stock. The VED bands are shown in the table opposite.

¹ First year vehicle licence rates for petrol and diesel cars purchased on or after 1st April 2011. First year rate or 'showroom tax' applies to new car purchases only.

² Rate reverts to the Government's applicable Standard VED rate in subsequent years.

Please confirm figures with your Škoda retailer. Edition: UK 30th May 2011. VAT is calculated at 20%. For fuel consumption data, please refer to page 26-27.

Company car tax is based on your cars carbon dioxide emissions. The higher the car's emissions, the higher its tax liability. When a company car is made available for private use a 'Benefit in Kind' value is calculated for tax purposes.

To help you work out your tax liability please refer to page 30.

P11D (Expenses and Benefits)

The P11D value is calculated by taking the On The Road (OTR) price for the vehicle, less the Road Fund Licence (RFL) and First Registration Fee (FRF).

BIK (Benefit in Kind)
The BIK percentage value is based on the CO₂ emissions of the vehicle for the current tax year 2011/2012.

The Škoda Fabia Elegance

								Business user information	
Hatchback	CO ₂ (g/km)	VED Band**	Insurance Group (50)	Recommended Basic	VAT	RRP	Recommended OTR*	BiK 2011/12	P11D Value
1.2 12V 69PS 5spd	128	D	5E	£9,895.83	£1,979.17	£11,875.00	£12,440.00	15%	£12,385.00
1.2 TSI 86PS 5spd	121	D	9E	£10,408.33	£2,081.67	£12,490.00	£13,055.00	15%	£13,000.00
1.2 TSI 105PS 5spd	124	D	13E	£10,958.33	£2,191.67	£13,150.00	£13,715.00	15%	£13,660.00
1.2 TSI 105PS 7spd DSG	124	D	13E	£11,554.17	£2,310.83	£13,865.00	£14,430.00	15%	£14,375.00
1.6 TDI CR 75PS 5spd DPF	109	B	8E	£11,087.50	£2,217.50	£13,305.00	£13,870.00	13%	£13,815.00
1.6 TDI CR 90PS 5spd DPF	109	B	12E	£11,579.17	£2,315.83	£13,895.00	£14,460.00	13%	£14,405.00
1.6 TDI CR 105PS 5spd DPF	109	B	14E	£11,766.67	£2,353.33	£14,120.00	£14,685.00	13%	£14,630.00
Estate									
1.2 12V 69PS 5spd	128	D	5E	£10,604.17	£2,120.83	£12,725.00	£13,290.00	15%	£13,235.00
1.2 TSI 86PS 5spd	121	D	9E	£11,116.67	£2,223.33	£13,340.00	£13,905.00	15%	£13,850.00
1.2 TSI 105PS 5spd	124	D	13E	£11,666.67	£2,333.33	£14,000.00	£14,565.00	15%	£14,510.00
1.2 TSI 105PS 7spd DSG	124	D	13E	£12,262.50	£2,452.50	£14,715.00	£15,280.00	15%	£15,225.00
1.6 TDI CR 75PS 5spd DPF	109	B	8E	£11,795.83	£2,359.17	£14,155.00	£14,720.00	13%	£14,665.00
1.6 TDI CR 90PS 5spd DPF	109	B	12E	£12,287.50	£2,457.50	£14,745.00	£15,310.00	13%	£15,255.00
1.6 TDI CR 105PS 5spd DPF	109	B	14E	£12,475.00	£2,495.00	£14,970.00	£15,535.00	13%	£15,480.00

Standard Equipment (over SE)

16" 'Comet' alloys with anti-theft locking wheel bolts (6.5) x 16" 205/45 R16 83W)
4 spoke leather steering wheel, gearknob and gaiter
Air conditioned glovebox
Black protective side mouldings
Climate control air conditioning

Cruise control
Curtain airbags
Floor mats
Front armrest
Front fog lights
Glasses storage compartment
Maxi-dot trip computer

For offers visit www.skoda.co.uk/offers



The Škoda Fabia Scout

Estate	CO ₂ (g/km)	VED Band**	Insurance Group (50)	Recommended Basic	VAT	RRP	Recommended OTR*	Business user information BIK 2011/12	P11D Value
1.2 TSI 85PS 5spd	121	D	9E	£11,195.83	£2,239.17	£13,435.00	£14,000.00	15%	£13,945.00
1.6 TDI CR 75PS 5spd DPF	109	B	8E	£11,875.00	£2,375.00	£14,250.00	£14,815.00	13%	£14,760.00
1.6 TDI CR 90PS 5spd DPF	109	B	12E	£12,366.67	£2,473.33	£14,840.00	£15,405.00	13%	£15,350.00
1.6 TDI CR 105PS 5spd DPF	109	B	15E	£12,554.17	£2,510.83	£15,065.00	£15,630.00	13%	£15,575.00

Standard equipment (over Fabia SE)

16" 'Scout' alloys (6.5) x 16" 205/45 R16 83W)	Integrated front fog lights
3 spoke leather steering wheel, handbrake and gearknob	Protective body mouldings
Cruise control	'Scout' design textile floor mats
Electric rear windows	'Scout' upholstery
ESP Inc. ABS+ASR+EDL+HBA	Silver coloured roof rails
Front armrest	Stainless steel pedal set
	Sunset glass (from the B-pillar back)

For offers visit www.skoda.co.uk/offers



Band	CO ₂ (g/km)	First 12 Months ¹	Standard VED ²
A	Up to 100	£0	£0
B	101 - 110	£0	£20
C	111 - 120	£0	£30
D	121 - 130	£0	£95
E	131 - 140	£115	£115
F	141 - 150	£130	£130
G	151 - 165	£165	£165
H	166 - 175	£265	£190
I	176 - 185	£315	£210
J	186 - 200	£445	£245
K	201 - 225	£580	£260
L	226 - 255	£790	£445
M	Over 255	£1,000	£460

OTR (Recommended On The Road)

* Recommended 'On the Road' prices include delivery, 12 months Road Fund Licence, DVLA First registration Fee (at £55), and apply to the United Kingdom only.

VED (Vehicle Excise Duty)

** All vehicles will be subject to Vehicle Excise Duty based on the fuel type of the vehicle and its carbon dioxide (CO₂) emissions level, measured in grams per kilometre (g/km). Due to changes in vehicle emissions data, CO₂ figures may differ on these vehicles if taken from current Škoda UK stock. The VED bands are shown in the table opposite.

¹ First year vehicle licence rates for petrol and diesel cars purchased on or after 1st April 2011. First year rate or 'showroom tax' applies to new car purchases only.

² Rate reverts to the Government's applicable Standard VED rate in subsequent years.

Please confirm figures with your Škoda retailer. Edition: UK 30th May 2011. VAT is calculated at 20%. For fuel consumption data, please refer to page 26-27.

Company car tax is based on your car's carbon dioxide emissions. The higher the car's emissions, the higher its tax liability. When a company car is made available for private use a 'Benefit in Kind' value is calculated for tax purposes.

To help you work out your tax liability please refer to page 30.

P11D (Expenses and Benefits)

The P11D value is calculated by taking the On The Road (OTR) price for the vehicle, less the Road Fund Licence (RFL) and First Registration Fee (FRF).

BIK (Benefit in Kind)
The BIK percentage value is based on the CO₂ emissions of the vehicle for the current tax year 2011/2012.

The Škoda Fabia Monte Carlo

Hatchback	CO ₂ (g/km)	VED Band**	Insurance Group (50)	Recommended Basic	VAT	RRP	Recommended OTR*	Business user information	
								BiK 2011/12	P11D Value
1.2 12V 69PS 5spd	128	D	5E	£10,258.33	£2,051.67	£12,310.00	£12,875.00	15%	£12,820.00
1.2 TSI 86PS 5spd	121	D	9E	£10,770.83	£2,154.17	£12,925.00	£13,490.00	15%	£13,435.00
1.2 TSI 105PS 5spd	124	D	13E	£11,320.83	£2,264.17	£13,585.00	£14,150.00	15%	£14,095.00
1.6 TDI CR 75PS DPF 5spd	109	B	9E	£11,450.00	£2,290.00	£13,740.00	£14,305.00	13%	£14,250.00
1.6 TDI CR 105PS DPF 5spd	109	B	15E	£12,129.17	£2,425.83	£14,555.00	£15,120.00	13%	£15,065.00

Standard Equipment

17" 'Trinity' alloys (7) x 17" 205/40 R17 84W)	Driver door mirror (aspherical) provides an increased field of view. Passenger convex.	MDI (Multi Device Interface) and cable for connecting MP3 players†
1.5-litre drinks holder in front door panels	Driver seat belt warning light	Perforated leather sports steering wheel with red stitching
3.5mm aux. socket (for MP3 players etc.)	Electric front windows	Pollen filter
3 point seat belts with seat belt tensioners and height adjustment (front).	Electrically heated and adjustable door mirrors	Power steering
3 point seat belts (rear)	Exterior temperature gauge	Preparation for ISOFIX
8 speakers	Folding grab handles in the roof frame	Radio 'Swing' 2DIN with single CD, can play MP3 recordings
ABS (Anti-lock Braking System) Inc. EBC + Dual Rate Brake Booster	Front and side windows in tinted glass	Rear diffuser (black)
Black gloss door mirrors	Front fog lights	Rear drum brakes
Black gloss wheel arch and front spoiler mouldings	Glovebox cover	Rear fog light
Black roof and tailgate spoiler	Headlight range adjustment	Rear wiper with intermittent control
Black smoked halogen projector headlights with DE module	Heated rear window	Remote central locking
Body coloured bumpers and door handles	Height adjustable driver and passenger seats	Roof aerial with second antenna in windscreen for FM2 signal
Category 1 alarm with tilt sensor	Height adjustable head restraints (front & rear x2)	Split folding rear seats (60%/40%)
Darkened chrome on top of radiator grille	Height and reach adjustable steering wheel	Sports seats (Onyx)
Delayed interior lighting	Interior rear view mirror with dimming facility	Sports suspension
Driver and passenger front and side airbags with passenger airbag de-activation switch	Leather gearknob and handbrake with red stitching	Steel sports pedals and kick plate
Driver and passenger vanity mirrors	Load securing loops in luggage space	Stowage box in boot
	Manual air conditioning	Sunset glass (from B-pillar back)
		Ticket holder
		Trip computer
		Tyre repair kit (no spare wheel) †
		Windscreen wiper with Intermittent control (4 speed)



For offers visit www.skoda.co.uk/offers

† Temporary spare wheel or temporary 'Space saver' spare wheel can be ordered as an option.
If added the tyre repair kit will be removed. For further details please check page 24.

†† Retailer supplied



Band	CO ₂ (g/km)	First 12 Months ¹	Standard VED ²
A	Up to 100	£0	£0
B	101 - 110	£0	£20
C	111 - 120	£0	£30
D	121 - 130	£0	£95
E	131 - 140	£115	£115
F	141 - 150	£130	£130
G	151 - 165	£165	£165
H	166 - 175	£265	£190
I	176 - 185	£315	£210
J	186 - 200	£445	£245
K	201 - 225	£580	£260
L	226 - 255	£790	£445
M	Over 255	£1,000	£460

OTR (Recommended On The Road)

* Recommended 'On the Road' prices include delivery, 12 months Road Fund Licence, DVLA First registration Fee (at £55), and apply to the United Kingdom only.

VED (Vehicle Excise Duty)

** All vehicles will be subject to Vehicle Excise Duty based on the fuel type of the vehicle and its carbon dioxide (CO₂) emissions level, measured in grams per kilometre (g/km). Due to changes in vehicle emissions data, CO₂ figures may differ on these vehicles if taken from current Skoda UK stock. The VED bands are shown in the table opposite.

¹First year vehicle licence rates for petrol and diesel cars purchased on or after 1st April 2011. First year rate or 'showroom tax' applies to new car purchases only.

² Rate reverts to the Government's applicable Standard VED rate in subsequent years.

Please confirm figures with your Skoda retailer. Edition: UK 30th May 2011. VAT is calculated at 20%. For fuel consumption data, please refer to page 26-27.

Company car tax is based on your cars carbon dioxide emissions. The higher the car's emissions, the higher its tax liability. When a company car is made available for private use a 'Benefit in Kind' value is calculated for tax purposes.

To help you work out your tax liability please refer to page 30.

P11D (Expenses and Benefits)

The P11D value is calculated by taking the On The Road (OTR) price for the vehicle, less the Road Fund Licence (RFL) and First Registration Fee (FRF).

BIK (Benefit in Kind)
The BIK percentage value is based on the CO₂ emissions of the vehicle for the current tax year 2011/2012.





The Škoda Fabia vRS

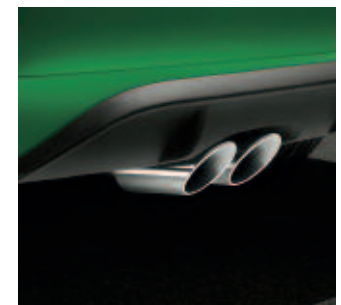
	CO ₂ (g/km)	VED Band**	Insurance Group (50)	Recommended Basic	VAT	RRP	Recommended OTR*	Business user information	
Hatchback								BiK 2011/12	P11D Value
1.4 TSI 180PS 7spd DSG	148	F	27E	£13,100.00	£2,620.00	£15,720.00	£16,415.00	19%	£16,230.00
Estate									
1.4 TSI 180PS 7spd DSG	148	F	27E	£13,808.33	£2,761.67	£16,570.00	£17,265.00	19%	£17,080.00

Standard equipment

17" 'Gigaro' alloy wheels
(7) x 17" 205/40 R17 84W
12V socket in boot (Estate only)
3 point seat belts with seat
belt tensioners and height
adjustment (front)
3 spoke multi-function leather sports
steering wheel with paddles and
controls for radio
Black gloss front grille
Black gloss headlights
Black roof rails (Estate only)
Body coloured bumpers
Category 1 alarm with tilt sensor
Chrome kick plates in front door sills
Delayed interior lighting
Driver and passenger vanity mirrors
Driver door mirror (aspherical)
providing an increased field of view
Driver seat belt warning light
Electric front windows
Electrically heated and adjustable
door mirrors

ESP+HHC+TPM+XDS (ESP with Hill
Hold Control, Tyre Pressure Monitor
and Electronically Controlled
Differential)
Folding grab handles in the
roof frame
Glovebox cover
Halogen projector headlights with
DE module
Headlight range adjustment
Heated rear window
Height adjustable driver and
passenger seat
Height adjustable headrests in
rear (two)
Interior rear view mirror with
dimming facility
Leather gearknob
Leather hand brake
LED daylight running lights
Load securing loops in luggage space
Manual air conditioning
Maxi-dot trip computer
MDI (Multi device interface) and cable
for connecting MP3 players †

Pollen filter
Radio 'Swing' 2DIN CD and 8 speakers
(can play MP3 recordings)
Rear chrome double exhaust pipe
Rear fog light
Rear tailgate spoiler
Rear wiper with intermittent control
Red brake callipers
Remote central locking with alarm
and tilt sensor
Retractable parcel shelf (Estate only)
Škoda IRC Champion sticker in
rear window
Škoda IRC winners badge on
front bumper
Sports suspension
Steel sports pedals
Sunset glass (from the B-pillar back)
Temporary 'Space saver' spare wheel
vRS Bodykit
vRS sports seats with logo
Windscreen wiper with Intermittent
control (4 speeds)



For offers visit www.skoda.co.uk/offers

† Retailer supplied



Band	CO ₂ (g/km)	First 12 Months ¹	Standard VED ²
A	Up to 100	£0	£0
B	101 - 110	£0	£20
C	111 - 120	£0	£30
D	121 - 130	£0	£95
E	131 - 140	£115	£115
F	141 - 150	£130	£130
G	151 - 165	£165	£165
H	166 - 175	£265	£190
I	176 - 185	£315	£210
J	186 - 200	£445	£245
K	201 - 225	£580	£260
L	226 - 255	£790	£445
M	Over 255	£1,000	£460

OTR (Recommended On The Road)

* Recommended 'On the Road' prices include delivery, 12 months Road Fund Licence, DVLA First registration Fee (at £55), and apply to the United Kingdom only.

VED (Vehicle Excise Duty)

** All vehicles will be subject to Vehicle Excise Duty based on the fuel type of the vehicle and its carbon dioxide (CO₂) emissions level, measured in grams per kilometre (g/km). Due to changes in vehicle emissions data, CO₂ figures may differ on these vehicles if taken from current Skoda UK stock. The VED bands are shown in the table opposite.

¹First year vehicle licence rates for petrol and diesel cars purchased on or after 1st April 2011. First year rate or 'showroom tax' applies to new car purchases only.

² Rate reverts to the Government's applicable Standard VED rate in subsequent years.

Please confirm figures with your Skoda retailer. Edition: UK 30th May 2011. VAT is calculated at 20%. For fuel consumption data, please refer to page 26-27.

Company car tax is based on your cars carbon dioxide emissions. The higher the car's emissions, the higher its tax liability. When a company car is made available for private use a 'Benefit in Kind' value is calculated for tax purposes.

To help you work out your tax liability please refer to page 30.

P11D (Expenses and Benefits)

The P11D value is calculated by taking the On The Road (OTR) price for the vehicle, less the Road Fund Licence (RFL) and First Registration Fee (FRF).

BIK (Benefit in Kind)
The BIK percentage value is based on the CO₂ emissions of the vehicle for the current tax year 2011/2012.

Factory Fitted Optional Equipment

Available on all models (excluding GreenLine II)	Basic	VAT	RRP
'Amundsen' satellite navigation system Inc. maps for Western Europe (not available on S)	£437.50	£87.50	£525.00
Acoustic rear parking sensors (Not available on S)	£233.33	£46.67	£280.00
Bicycle holder in luggage compartment (Estate only)	£137.50	£27.50	£165.00
Black protective side mouldings (S and SE only)	£41.67	£8.33	£50.00
Curtain Airbags (Standard on Elegance, vRS)	£204.17	£40.83	£245.00
Electric sunroof (Not available on S)	£320.83	£64.17	£385.00
ESP Inc. ABS +ASR+EDL+HBA (standard on Scout, vRS, 1.2 TSI DSG)	£304.17	£60.83	£365.00
Heated front seats	£137.50	£27.50	£165.00
Integrated headlight washers	£75.00	£15.00	£90.00
MDI (Multi Device Interface) (Not available on S, standard on vRS and Monte Carlo)	£141.67	£28.33	£170.00
Metallic / Pearl effect paint / Sprint Yellow	£366.67	£73.33	£440.00
Partial leather upholstery ††† (cloth, leather and artificial leather not available on S, Monte Carlo, vRS)	£500.00	£100.00	£600.00
Rear electric windows (Not available on S)	£129.17	£25.83	£155.00
Smoker's pack (cigarette lighter and ashtray)	£33.33	£6.67	£40.00
Sports suspension (Not available on Scout, standard on Monte Carlo and vRS)	£87.50	£17.50	£105.00
Storage box under drivers seat (Not available on S)	£33.33	£6.67	£40.00
Storage box under passenger seat	£33.33	£6.67	£40.00
Storage boxes - front seats	£50.00	£10.00	£60.00
Temporary spare steel wheel / 'Space saver' steel wheel †† (Not available on vRS)	£54.17	£10.83	£65.00
Towbar, removeable and lockable** (Not available on Monte Carlo and vRS)	£262.50	£52.50	£315.00
Towbar, preparation (Not available on Monte Carlo and vRS)	£91.67	£18.33	£110.00
Textile floor mats (S, SE and Monte Carlo only)	£41.67	£8.33	£50.00
Third rear headrest	£54.17	£10.83	£65.00
Tyre pressure monitor (TPM) (Not available on S, standard on vRS)	£83.33	£16.67	£100.00
Variable boot floor (Not available on S Estate only)	£116.67	£23.33	£140.00
White roof (Not available on Monte Carlo)♦♦	£312.50	£62.50	£375.00
Climate control air conditioning (Not available on S, standard on Elegance)	£229.17	£45.83	£275.00

Available on Fabia S models	Basic	VAT	RRP
15" 'Antares' alloys	£354.17	£70.83	£425.00
4 spoke leather steering wheel and small leather pack †	£145.83	£29.17	£175.00
Alarm with interior monitoring, back up horn, and remote central locking	£237.50	£47.50	£285.00
Black roof rails (Estate only)	£187.50	£37.50	£225.00
Front fog lights	£137.50	£27.50	£165.00
Glovebox cover	£41.67	£8.33	£50.00
Manual air conditioning	£458.33	£91.67	£550.00
Sunset glass (from B-pillar back)	£229.17	£45.83	£275.00



Third rear headrest



Curtain airbags



Multi-function steering wheel

Factory Fitted Optional Equipment (continued)

Available on Fabia Greenline II models	Basic	VAT	RRP
4 spoke leather steering wheel and small leather pack † (Not available on Estate)	£145.83	£29.17	£175.00
4 spoke MFSW for radio and small leather pack † (Not available on Estate)	£179.17	£35.83	£215.00
4 spoke MFSW for telephone and radio and small leather pack (Not available on Estate) †♦	£195.83	£39.17	£235.00
Acoustic rear parking sensors	£233.33	£46.67	£280.00
'Amundsen' satellite navigation system Inc. maps for Western Europe (Not available on Estate)	£437.50	£87.50	£525.00
Black protective side mouldings	£41.67	£8.33	£50.00
Climate control air conditioning	£229.17	£45.83	£275.00
Curtain airbags	£204.17	£40.83	£245.00
Heated front seats (Not available on Estate)	£137.50	£27.50	£165.00
Maxi-dot trip computer	£129.17	£25.83	£155.00
Rear electric windows	£129.17	£25.83	£155.00
Smoker's pack (cigarette lighter and ashtray)	£33.33	£6.67	£40.00
Sunset glass (from B-pillar back)	£145.83	£29.17	£175.00
Telephone preparation GSM II with Bluetooth® (Inc. Maxi-dot - Not available on Estate)	£279.17	£55.83	£335.00
Textile floor mats	£41.67	£8.33	£50.00
Third rear headrest	£54.17	£10.83	£65.00

Available on Fabia SE models	Basic	VAT	RRP
16" 'Atria' alloys (6.5)x16" 205/45 R16 83W)	£187.50	£37.50	£225.00
16" 'Elba' alloys (6.5) x 16" 205/45 R16 83W)	£187.50	£37.50	£225.00
3 spoke leather steering wheel and small leather pack †	£212.50	£42.50	£255.00
3 spoke MFSW for radio and small leather pack †	£245.83	£49.17	£295.00
3 spoke MFSW for radio and telephone and small leather pack † ♦	£262.50	£52.50	£315.00
Black / Silver roof rails (Estate only)	£116.67	£23.33	£140.00
Cornering front fog lights	£200.00	£40.00	£240.00
Cruise control	£145.83	£29.17	£175.00
ESP Plus (ESP inc. TPM+HHC)	£400.00	£80.00	£480.00
Front armrest	£75.00	£15.00	£90.00
Front fog lights	£137.50	£27.50	£165.00
Maxi-dot trip computer	£129.17	£25.83	£155.00
Sunset glass (from B-pillar back)	£145.83	£29.17	£175.00
Telephone preparation GSM II with Bluetooth® (Inc. Maxi-dot)	£279.17	£55.83	£335.00



Sunroof



Curve Projector Headlights



Climate Control Air-Conditioning

Note: MFSW - Multi-function Steering Wheel.

† 'Feinappa' leather on gear knob and handbrake, and leatherette on gearstick surround.

†† Dependant on trim and optional wheel fitted. Please consult your Retailer for details.

††† Must be ordered in conjunction with a three spoke, four spoke or MFSW.

♦ Requires Bluetooth®

* Black roof selected colours only see page 22 for details.

** The factory tow bar provides a complete single electrics solution via a 13 pin socket. No further accessories are required, but a 13 pin to 7 pin adapter is available if required - please contact your retailer for more details.

♦♦ The white roof option is only available on Hatch and selected body colours. See page 22 for details.

Factory Fitted Optional Equipment (continued)

Available on SE Plus models	Basic	VAT	RRP
16" 'Atria' alloys (6.5)x16" 205/45 R16 83W)	£187.50	£37.50	£225.00
16" 'Elba' alloys (6.5J x 16" 205/45 R16 83W)	£187.50	£37.50	£225.00
3 spoke MFSW for radio and telephone and small leather pack †	£262.50	£52.50	£315.00
Black / Silver roof rails (Estate only)	£116.67	£23.33	£140.00
Cornering front fog lights	£200.00	£40.00	£240.00
Cruise control	£145.83	£29.17	£175.00
ESP Plus (ESP inc. TPM+HHC)	£400.00	£80.00	£480.00
Front armrest	£75.00	£15.00	£90.00
Front fog lights	£137.50	£27.50	£165.00
Maxi-dot trip computer	£129.17	£25.83	£155.00
Telephone preparation GSM II with Bluetooth®	£279.17	£55.83	£335.00

Available on Fabia Elegance models	FOC	FOC	FOC
16" 'Elba' alloys (6,5) x 16") - set of four	FOC	FOC	FOC
3 spoke leather steering wheel and small leather pack †	£75.00	£15.00	£90.00
3 spoke MFSW for radio and small leather pack †	£112.50	£22.50	£135.00
3 spoke MFSW for radio and telephone and small leather pack †	£129.17	£25.83	£155.00
Black / Silver roof rails (Estate only)	£116.67	£23.33	£140.00
Cornering front fog lights	£83.33	£16.67	£100.00
Curve projector halogen headlights including cornering front fog lights	£229.17	£45.83	£275.00
ESP Plus (ESP inc. TPM+HHC)	£400.00	£80.00	£480.00
Sunset glass (from B-pillar back)	£145.83	£29.17	£175.00
Telephone preparation GSM II with Bluetooth®	£195.83	£39.17	£235.00

Available on Fabia Scout models			
17" 'Scout' alloys (7)x17" 205/40 R17 84W)	£270.83	£54.17	£325.00
3 spoke MFSW for radio and small leather pack †	£50.00	£10.00	£60.00
3 spoke MFSW for radio and telephone and small leather pack †	£75.00	£15.00	£90.00
ESP Plus (ESP inc. TPM+HHC)	£129.17	£25.83	£155.00
Glasses storage compartment	£20.83	£4.17	£25.00
LED Daytime running lights (replaces fog light functionality)	£83.33	£16.67	£100.00
Maxi-dot trip computer	£129.17	£25.83	£155.00
Telephone preparation GSM II with Bluetooth® (Inc. Maxi-dot)	£279.17	£55.83	£335.00



Satellite Navigation 'Amundsen'



Cruise control

Factory Fitted Optional Equipment (continued)

Available on Fabia Monte Carlo models	Basic	VAT	RRP
'Amundsen' satellite navigation system	£437.50	£87.50	£525.00
Climate control air conditioning	£229.17	£45.83	£275.00
Cruise control	£145.83	£29.17	£175.00
ESP Plus (ESP+TPM+HHC)	£400.00	£80.00	£480.00
Front armrest	£75.00	£15.00	£90.00
Maxi-dot trip computer	£129.17	£25.83	£155.00
Telephone preparation GSM II with Bluetooth®	£279.17	£55.83	£335.00

Available on Fabia vRS models	Basic	VAT	RRP
17" 'Gigaro' Black alloys (7jx17" 205/40 R17 7jx17 ET41)	£91.67	£18.33	£110.00
17" 'Gigaro' Dark Chrome alloys (7jx17" 205/40 R17 7jx17 ET41)	£91.67	£18.33	£110.00
17" 'Gigaro' White alloys (7jx17" 205/40 R17 7jx17 ET41)	£91.67	£18.33	£110.00
3 spoke leather MFSW for radio and telephone ♦	£137.50	£27.50	£165.00
Cruise control	£145.83	£29.17	£175.00
Floor mats	£41.67	£8.33	£50.00
Front armrest	£75.00	£15.00	£90.00
Glasses storage compartment	£20.83	£4.17	£25.00
Rear electric windows	£129.17	£25.83	£155.00
Telephone preparation GSM II with Bluetooth®	£195.83	£39.17	£235.00
Black roof *	£312.50	£62.50	£375.00



Multi Device Interface



Silver roof rails



White roof

Note: MFSW - Multi-function Steering Wheel.

[†] 'Feinappa' leather on gear knob and handbrake, and leatherette on gearstick surround.

^{**} Dependant on trim and optional wheel fitted. Please consult your Retailer for details.

^{***} Must be ordered in conjunction with a three spoke, four spoke or MFSW.

♦ Requires Bluetooth®

* Black roof selected colours only see page 22 for details.

^{**} The factory tow bar provides a complete single electrics solution via a 13 pin socket. No further accessories are required, but a 13 pin to 7 pin adapter is available if required - please contact your retailer for more details.

^{♦♦} The white roof option is only available on Hatch and selected body colours. See page 22 for details.

The Škoda Fabia colours

Standard



1. Candy White 9P9P



2. Corrida Red 8T8T†



3. Pacific Blue Z5Z5†



4. Sprint Yellow F2F2



5. Anthracite Grey metallic 9J9J†



6. Rosso Brunello metallic X7X7**



7. Black Magic pearl effect 1Z1Z†



8. Cappuccino metallic 4K4K



9. Petrol Blue metallic 0F0F*†



10. Brilliant Silver metallic 8E8E



11. Arctic Green metallic 8B8B†



12. Satin Grey metallic 5T5T†



13. Safari metallic 8S8S



14. Steel Grey metallic 2G2G**

	1	2	3	4	5	6	7	8
	Candy White	Corrida Red	Pacific Blue	Sprint Yellow	Anthracite Grey metallic	Rosso Brunello metallic	Black Magic pearl effect	Cappuccino metallic
Fabia	•	•	•	•	•	•	•	•
Fabia Scout	•	•	•	•	•	•	•	•
	9	10	11	12	13	14		
	Petrol Blue metallic	Brilliant Silver metallic	Arctic Green metallic	Satin Grey metallic	Safari metallic	Steel Grey metallic		
Fabia	•	•	•	•	•	•		
Fabia Scout	•	•	•	•	•	•		

The Škoda Fabia colours

Monte Carlo



15. Anthracite Grey metallic 9J1Z



16. Black Magic Pearl Effect 1Z1Z



17. Candy White 9P1Z



18. Sprint Yellow F2F2



19. Corrida Red 8T1Z



20. Brilliant Silver metallic 8E1Z

vRS



21. Candy White 9P9P♦



22. Corrida Red 8T8T†♦



23. Sprint Yellow F2F2♦



24. Race Blue metallic 8X8X†♦



25. Rallye Green metallic P7P7†♦



26. Black Magic pearl effect 1Z1Z†



27. Brilliant Silver metallic 8E8E♦

	15	16	17	18	19	20
	Anthracite Grey metallic	Black Magic Pearl Effect	Candy White	Sprint Yellow	Corrida Red	Brilliant Silver metallic
Fabia Monte Carlo	•	•	•	•	•	•

	21	22	23	24	25	26	27
	Candy White	Corrida Red	Sprint Yellow	Race Blue metallic	Rallye Green metallic	Black Magic Pearl Effect	Brilliant Silver metallic
Fabia vRS	•	•	•	•	•	•	•

♦ Black roof available in combination with these colours vRS Hatch only. † White roof available in combination with these colours Hatch only. * Available to order from 1st June 2011. ** Available to order from 13th June 2011.

★ Rosso Brunello metallic subject to availability, please consult your retailer. Because of errors which may occur in the print, the colours illustrated here may differ from the actual finishes themselves. Your Škoda retailer will be pleased to advise you.

The Škoda Fabia trims & wheels

Fabia S

Standard



Stone Blue upholstery
Onyx/Silver dash or
Onyx/Onyx dash



Stone Grey upholstery
Onyx/Silver dash or
Onyx/Onyx dash



15" 'Satellite'
Steel wheel covers

Option



15" 'Antares' alloys

Fabia GreenLine II

Standard



Domino Grey upholstery
Onyx/Silver dash or
Onyx/Onyx dash



Domino Black upholstery
Onyx/Silver dash or
Onyx/Onyx dash



15" 'Antares' alloys

Fabia SE

Standard



Domino Grey upholstery
Onyx/Silver dash or
Onyx/Onyx dash



Domino Black upholstery
Onyx/Silver dash or
Onyx/Onyx dash



15" 'Antares' alloys

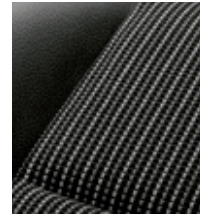
Option



16" 'Atria' alloys



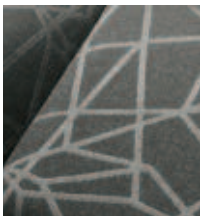
16" 'Elba' alloys



Partial leather
upholstery

Fabia SE Plus

Standard



Kristal upholstery
Onyx/Onyx dash

Option



15" 'Antares' alloys

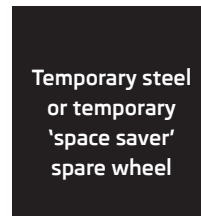


16" 'Atria' alloys



16" 'Elba' alloys

Available on all models (except GreenLine II)



See page 18 for details

Pictures are for illustrative purposes only. Please visit your local retailer for further information.

The Škoda Fabia trims & wheels

Fabia Elegance

Standard



Chess Black upholstery
Onyx/ Onyx dash

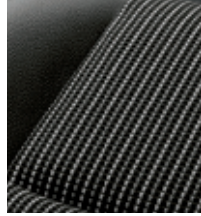


Chess Beige upholstery
Onyx / Ivory dash



16" 'Comet' alloys

Option



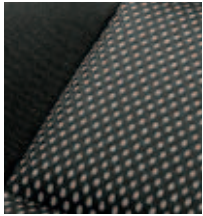
Partial leather
upholstery



16" 'Elba' alloys

Fabia Scout

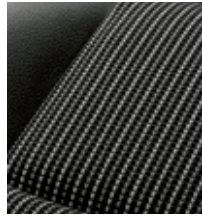
Standard



'Scout' upholstery



16" 'Scout' alloys'



Partial leather
upholstery

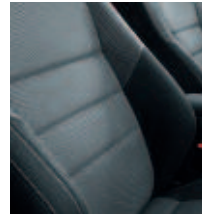


17" 'Scout' alloys'

Option

Fabia Monte Carlo

Standard



Onyx Black



Onyx Red



17" Black Trinity alloys

Fabia vRS

Standard



Tempo Grey vRS
upholstery



Tempo Red vRS
upholstery



17" 'Gigaro' alloys



17" 'Gigaro' Dark
Chrome alloys



17" 'Gigaro' Black alloys



17" 'Gigaro' White alloys

Option

The Škoda Fabia Engine Specifications

Petrol Engines	1.2 6V 60PS	1.2 12V 69PS	1.2 TSI 86PS	1.2 TSI 105PS	1.2 TSI 105PS DSG	1.4 TSI 180PS DSG
Trim level	S	S / SE / SE Plus / Elegance / Monte Carlo	SE / SE Plus / Elegance / Scout / Monte Carlo	SE / SE Plus / Elegance / Monte Carlo	S / SE / SE Plus / Elegance	vRS
Type	3-cylinder in-line engine	3-cylinder in-line	4-cylinder in-line engine	4-cylinder in-line engine	4-cylinder in-line engine	4-cylinder in-line engine
Fuel injection system	Multi point fuel injection	Multi point fuel injection	Electronically Controlled Direct Injection	Electronically Controlled Direct Injection	Electronically Controlled Direct Injection	Electronically Controlled Direct Injection
Cubic capacity cc	1,198	1,198	1,197	1,197	1,197	1,390
Bore x stroke mm	76.5 x 86.9	76.5 x 86.9	71.0 x 75.6	71.0 x 75.6	71.0 x 75.6	76.5 x 75.6
Air pollution regulation	EU V	EU V	EU V	EU V	EU V	EU V
Compression ratio	10.3:1	10.5:1	10.0:1	10.0:1	10.0:1	10.0:1
Hatchback						
Performance			SE / Elegance			
Max speed mph (km/h)	96 (155)□	101 (163)□	110 (177)□	119 (191)□	117 (189)□	139 (224)□
Acceleration 0-62mph	16.5	14.9	11.7	10.1	10.2	7.3
Max. performance (PS/rpm)	60 / 5,200	69 / 5,400	86 / 4,800	105 / 5,000	105 / 5,000	180 / 6,200
Max. torque (Nm/rpm)	108 / 3,000	112 / 3,000	160 / 1,500 - 3,500	175 / 1,500 - 4,100	175 / 1,500 - 4,100	250 / 2,000 - 4,500
Fuel consumption mpg (l/100km)						
Urban*	37.7 (7.5)	38.7 (7.3)	42.8 (6.6)	41.5 (6.8)	40.4 (7.0)	36.7 (7.7)
Extra Urban*	60.1 (4.7)	62.8 (4.5)	64.2 (4.4)	62.8 (4.5)	64.2 (4.4)	54.3 (5.2)
Combined*	49.6 (5.7)	51.4 (5.5)	54.3 (5.2)	53.3 (5.3)	53.3 (5.3)	45.6 (6.2)
CO ₂ emissions g/km*	132	128	121	124	124	148
Estate						
Performance		S / SE / SE Plus / Elegance	SE / SE Plus / Elegance / Scout	SE / SE Plus / Elegance	S / SE / SE Plus / Elegance	vRS
Max speed mph (km/h)	n/a	102 (164)□	111 (178)□	120 (193)□	118 (190)□	140 (226)□
Acceleration 0-62mph	n/a	15.0	11.8	10.2	10.3	7.3
Max. performance (PS/rpm)	n/a	69 / 5,400	86 / 4,800	105 / 5,000	105 / 5,000	180 / 6,200
Max. torque (Nm/rpm)	n/a	112 / 3,000	160 / 1,500 - 3,500	175 / 1,500 - 4,100	175 / 1,500 - 4,100	250 / 2,000 - 4,500
Fuel consumption mpg (l/100km)						
Urban*	n/a	38.7 (7.3)	42.8 (6.6)	41.5 (6.8)	40.4 (7.0)	36.7 (7.7)
Extra Urban*	n/a	62.8 (4.5)	64.2 (4.4)	62.8 (4.5)	64.2 (4.4)	54.3 (5.2)
Combined*	n/a	51.4 (5.5)	54.3 (5.2)	53.3 (5.3)	53.3 (5.3)	45.6 (6.2)
CO ₂ emissions g/km*	n/a	128	121	124	124	148

□ Where law permits.

Power transmission

Clutch The clutch assembly comprises of a single dry clutch disc with membrane spring, asbestos free.

Manual transmission Five-speed manual transmission, fully synchronised with direct gearshift.

Automatic transmission 7 speed DSG Two coaxial dry multiple disc clutch, electro - hydraulically operated.

Chassis

Front axle/rear axle McPherson suspension with lower triangular links and torsion stabiliser.

Suspension Coil springs, telescopic shock absorbers, rear springs located outside the shock absorber.

Braking system Hydraulic dual-diagonal circuit braking system vacuum assisted.

Front brakes Ventilated disc brakes in sliding calliper design with piston.

Rear brakes Drum brakes with two self-adjusting brake shoes.

vRS and GreenLine II (Hatch) Disc brakes front and rear.

Handbrake Mechanical handbrake operating on rear wheels.

Steering Maintenance free rack and pinion steering with power assist.

Turning circle (m) 10

The Škoda Fabia Engine Specifications

Diesel Engines	1.2 TDI CR 75PS DPF	1.6 TDI CR 75PS DPF	1.6 TDI CR 90PS DPF	1.6 TDI CR 105PS DPF
Trim level	GreenLine II	S / SE / SE Plus / Elegance / Monte Carlo	S / SE / SE Plus / Elegance / Scout	SE / SE Plus / Elegance / Scout / Monte Carlo
Type	3-cylinder in-line engine	4-cylinder in-line engine	4-cylinder in-line engine	4-cylinder in-line engine
Fuel injection system	Electronically Controlled Direct Injection	Electronically Controlled Direct Injection	Electronically Controlled Direct Injection	Electronically Controlled Direct Injection
Cubic capacity cc	1,199	1,598	1,598	1,598
Bore x stroke mm	79.5 x 80.5	79.5 x 80.5	79.5 x 80.5	79.5 x 80.5
Air pollution regulation	EU V	EU V	EU V	EU V
Compression ratio	16.5:1	16.5:1	16.5:1	16.5:1
Hatchback				
Performance			SE / Elegance	
Max speed mph (km/h)	107 (172)□	103 (166)□	109 (176)□	117 (188)□
Acceleration 0-62mph	14.2	14.1	12.6	10.9
Max. performance (PS/rpm)	75 / 4,200	75 / 4,000	90 / 4,200	105 / 4,400
Max. torque (Nm/rpm)	180 / 2,000	195 / 1,500 - 2,000	230 / 1,500 - 2,500	250 / 1,500 - 2,500
Fuel consumption mpg (l/100km)				
Urban*	68.9 (4.1)	55.4 (5.1)	55.4 (5.1)	55.4 (5.1)
Extra Urban*	94.2 (3.0)	78.5 (3.6)	78.5 (3.6)	78.5 (3.6)
Combined*	83.1 (3.4)	67.3 (4.2)	67.3 (4.2)	67.3 (4.2)
CO ₂ emissions g/km*	89	109	109	109
Estate				
Performance			SE / SE Plus / Elegance / Scout	
Max speed mph (km/h)	107 (172)□	104 (167)□	110 (177)□	118 (190)□
Acceleration 0-62mph	14.3	14.2	12.7	11.0
Max. performance (PS/rpm)	75 / 4,200	75 / 4,000	90 / 4,200	105 / 4,400
Max. torque (Nm/rpm)	180 / 2,000	195 / 1,500 - 2,000	230 / 1,500 - 2,500	250 / 1,500 - 2,500
Fuel consumption mpg (l/100km)				
Urban*	68.9 (4.1)	55.4 (5.1)	55.4 (5.1)	55.4 (5.1)
Extra Urban*	94.2 (3.0)	78.5 (3.6)	78.5 (3.6)	78.5 (3.6)
Combined*	83.1 (3.4)	67.3 (4.2)	67.3 (4.2)	67.3 (4.2)
CO ₂ emissions g/km*	89	109	109	109

□ Where law permits.

Tank

Fuel tank content 45 litres

Fuel Unleaded petrol RON 95 or unleaded petrol RON 91¹/ Diesel.

Body type Five-door, five-seat, double-space steel bodywork, fully zinc-coated.

Official fuel consumption for the Fabia range in mpg (litres/100km):

urban 37.7 (7.5) - 68.9 (4.1);
extra urban 54.3 (5.2) - 94.2 (3.0);
combined 45.6 (6.2) - 83.1 (3.4).

CO₂ Range 148 - 89 g/km

¹Using low-octane fuel may affect engine performance.

We measure the maximum power output figures of our engines in PS or Pferdestärke (horse strength in German), which is the metric equivalent of bhp. To convert from metric to imperial horsepower, divide the PS figure by 1.0139.

*Official fuel consumption according to EU Directive 99/94.

The consumption calculation according to 1999/100/EC is based on the actual unladen weight of the vehicle. Additional specifications can lead to a higher weight class and hence to consumption figures of this higher weight class. The driving style, road and traffic conditions, environmental influences and vehicle condition can in practice lead to consumption figures which may differ from those calculated in this standard.

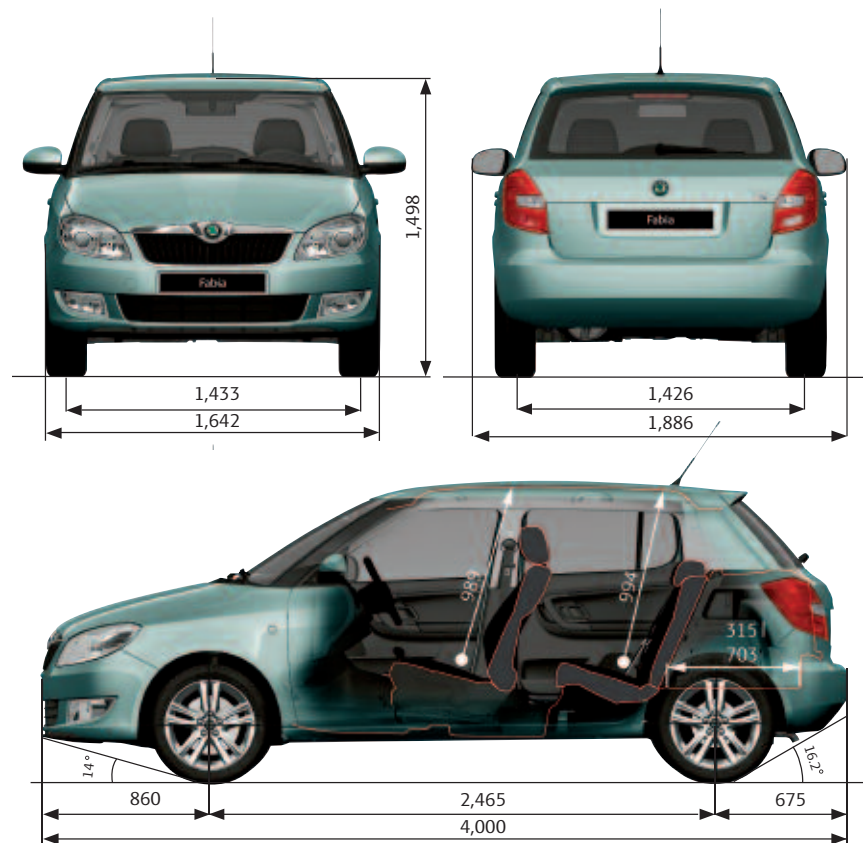
Measurements and Weights

The Škoda Fabia Hatchback

Exterior dimensions (mm)	Standard	GreenLine II	vRS	Monte Carlo
Length (mm)	4,000	4,000	4,029	4,013
Width (mm)	1,642	1,642	1,642	1,651
Height (mm)	1,498	1,484	1,492	1,493
Wheelbase (mm)	2,465	2,465	2,464	2,464
Track front (mm)	1,433	1,417	1,423	1,423
Track rear (mm)	1,426	1,410	1,415	1,415
Clearance (mm)	134	119	129	129

Interior dimensions (mm)

Headroom front/rear (mm)		989/994		
Front legroom (mm) (max/min)		1,075/858		
Rear legroom (mm) (max/min)		864/621		
Width of front/rear seats (mm)		1,380/1,384		
Boot capacity (litres)		300		
Boot capacity with rear seats folded (litres)		1,163		
Boot capacity without spare wheel (litres)	315	315	n/a	315
Boot capacity with rear seats folded and no spare wheel (litres)	1,180	1,180	n/a	1,180



Petrol	1.2 6V 60PS	1.2 12V 69PS	1.2 TSI 86PS	1.2 TSI 105PS	1.2 TSI 105PS DSG	1.4 TSI 180PS DSG
Weight						
Kerb weight* kg	1,015	1,020	1,041	1,055	1,089	1,243
Total weight kg	1,545	1,550	1,571	1,585	1,619	1,718
Payload** kg	530	530	530	530	530	475
Max roof load kg	75	75	75	75	75	75
Towing unbraked max kg	500	500	500	500	500	n/a
Towing braked max kg	800	800	1,100	1,200	1,200	n/a
Nose weight max kg	50	50	50	50	50	n/a

Diesel	1.2 TDI CR 75PS DPF	1.6 TDI CR 75PS DPF	1.6 TDI CR 90PS DPF	1.6 TDI CR 105PS DPF
Weight				
Kerb weight* kg	1,128	1,129	1,129	1,144
Total weight kg	1,658	1,659	1,659	1,674
Payload** kg	530	530	530	530
Max roof load kg	75	75	75	75
Towing unbraked max kg	500	500	500	500
Towing braked max kg	1,000	1,000	1,200	1,200
Nose weight max kg	50	50	50	50

All measurements and weights are correct at time of going to print but may be subject to change and may vary according to passengers and load in vehicle.

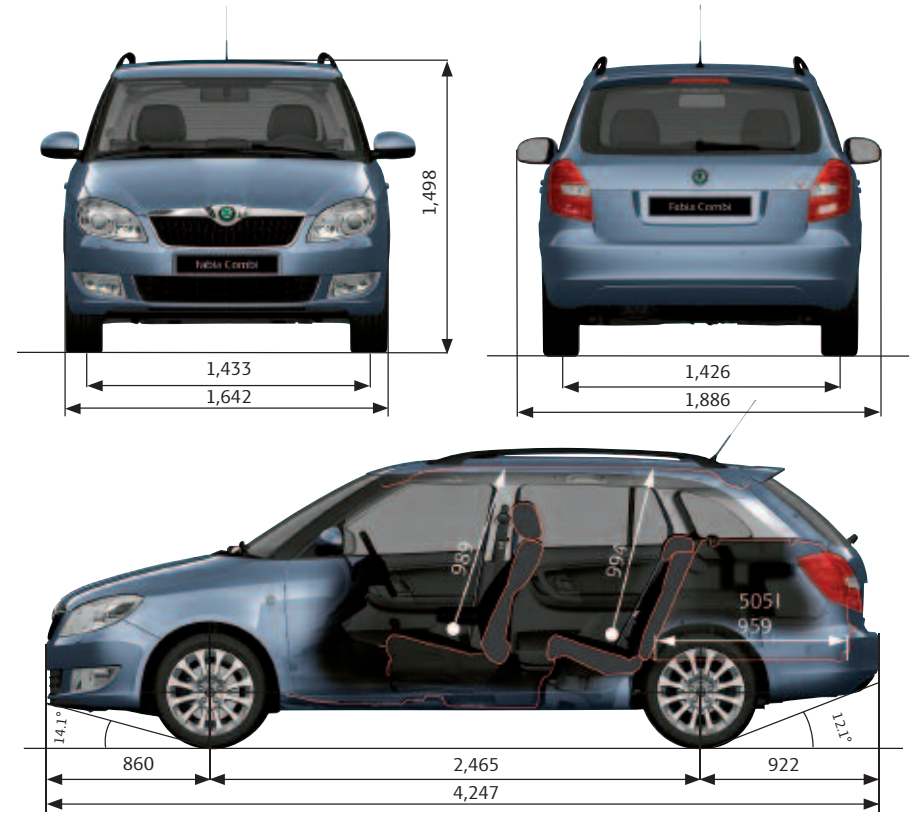
The Škoda Fabia Estate

Exterior dimensions (mm)

	Standard	GreenLine II	Scout	vRS
Length (mm)	4,247	4,247	4,247	4,276
Width (mm)	1,642	1,642	1,642	1,642
Height (mm)	1,498	1,484	1,513	1,494
Wheelbase (mm)	2,465	2,465	2,465	2,464
Track front (mm)	1,433	1,417	1,433	1,423
Track rear (mm)	1,426	1,410	1,426	1,415
Clearance (mm)	135	119	149	129

Interior dimensions (mm)

Headroom front/rear (mm)		989/994		
Front legroom (mm) (max/min)		1,075/858		
Rear legroom (mm) (max/min)		864/621		
Width of front/rear seats (mm)		1,380/1,383		
Boot capacity (litres)		480		
Boot capacity with rear seats folded (litres)		1,460		
Boot capacity without spare wheel (litres)	505	505	505	n/a
Boot capacity with rear seats folded and no spare wheel (litres)	1,485	1,485	1,485	n/a



Petrol	1.2 12V 69PS	1.2 TSI 86PS	1.2 TSI 105PS	1.2 TSI 105PS DSG	1.4 TSI 180PS DSG
Weight					
Kerb weight* kg	1,040	1,061	1,075	1,109	1,238
Total weight kg	1,570	1,591	1,605	1,639	1,713
Payload** kg	530	530	530	530	475
Max roof load kg	75	75	75	75	75
Towing unbraked max kg	450	450	450	450	n/a
Towing braked max kg	800	1,100	1,200	1,200	n/a
Nose weight max kg	50	50	50	50	n/a

Diesel	1.2 TDI CR 75PS DPF	1.6 TDI CR 75PS DPF	1.6 TDI CR 90PS DPF	1.6 TDI CR 105PS DPF
Weight				
Kerb weight* kg	1,144	1,149	1,149	1,164
Total weight kg	1,674	1,679	1,679	1,694
Payload** kg	530	530	530	530
Max roof load kg	75	75	75	75
Towing unbraked max kg	450	450	450	450
Towing braked max kg	1,000	1,000	1,200	1,200
Nose weight max kg	50	50	50	50

* Kerb weight is the mass of the vehicle with body work in running order (kg) ** Payload includes driver at 75kg & equipment.

Technical glossary

ABS: the anti-lock braking system prevents the wheels from locking during heavy or emergency braking, enabling the vehicle to remain steerable. When braking, wheel speed sensors measure the road wheel speed and should one or more wheels start to lock the system reduces brake pressure to that wheel.

Elements of the ABS System :-

- **Dual Rate Vacuum Brake Boosters:** increases brake effort under emergency braking conditions.
- **EBC:** Electronic brake control. The engine brake torque control regulates the power supply by intervening with the engine management system.

CAN Bus: the CAN Bus is an electronic data bus which links the various different electronic control systems in the car. It ensures ideal co-ordination between systems and reduces the amount of wiring needed in the car.

Fuel cut-out: should one or more of the airbags inflate after an accident, this system automatically cuts out the fuel supply, thus preventing subsequent leakage of the diesel or petrol.

Trip Computer: the trip computer not only features an impressive range of data displays, operating it is simplicity itself. A multifunction touch key enables you to call up all relevant data on the easy-to-read display. Features include external temperature, time, current fuel consumption, average fuel consumption, miles driven and average speed.

DPF: diesel particulate filter is part of the exhaust system responsible for cleaning the engine exhaust gases before they enter the atmosphere. The DPF catches soot particles emitted in the exhaust gas and it works in conjunction with the catalytic converter, which reduces the amount of harmful gases entering the atmosphere. The DPF must periodically be emptied of the soot particles, a process known as regeneration. This involves elevated exhaust system temperatures. A driving style is required during regeneration, where a constant vehicle speed above 37 mph must be maintained. This does not always suit customers who make frequent short journeys or experience stop/start driving or drive within inner-city or urban areas.

CR: the completely new range of diesel engines are built on a system of Common-Rail fuel injection. The diesel engines have a high-pressure common rail direct injection fuel system and four-valve technology. As a result, the new engines are much quieter, more refined in their operation and consume less fuel, compared to the Pump Duse engines and significantly reduce emissions.

ESP: electronic stability programme is designed to stabilise the dynamic handling response of the vehicle by counteracting any tendency towards oversteer or understeer. The ESP constantly compares the actual movement of the vehicle with predetermined values and according to the situation ESP reacts by braking each wheel individually (according to direction of slip) and automatically adjusting the engine's output.

Elements of ESP system:-

- **ASR:** anti-slip regulation traction control ensures the Fabia's stability when pulling away or accelerating. If the engine power or torque being transmitted to the drive wheels is too great, for example on a slippery road surface, engine torque is automatically reduced until optimum road holding returns, thus preventing wheelspin. A light indicates whether the ASR system is on. It can be manually switched off.

- **EDL:** the electronic differential lock continually compares the rpm of the drive wheels, and if it identifies a difference between them which could lead to an individual wheel spinning, for example if the two wheels are on different types of surface or accelerating on wet leaves, the system brakes the wheel affected until uniform rpm of all drive wheels is restored.

- **HBA:** Hydraulic brake assistant increases the optimal build-up of brake power. It ensures complete use of the brake system potential, thus shortening the braking distance.

- **HHC:** Hill hold control allows for a safe hill start by holding the brake for a small amount of time, reducing the risk of unintentional reversing or roll back.

- **TPM:** Draws the drivers attention to any pressure loss in any of the tyres. Early warning can prevent damage from occurring as a result of an under inflated tyre or a defect that radically changes the cars behaviour and driveability.

Calculating your tax liability

To find out how much tax you will pay, simply take the P11D value, then multiply this figure by the BiK percentage. Then simply multiply this figure by 20% or 40% depending on the level of income tax that you pay.

Please note if your employer provides you with free fuel, this is treated as an additional taxable benefit.

For more information on company car taxation please visit the HM revenue and customs website www.hmrc.gov.uk

BiK calculation example- Fabia S Hatch 1.2 12v 69PS 5spd

P11D value	£10,365.00
Company Car BiK tax based on CO ₂ emission level	15%
Taxable BiK (for 2011/2012 tax year): 15% of £10,365.00	£1,554.75

Annual company car tax (2011/12)

20% Income Tax: 20% of £1,554.75	£310.95
40% income Tax: 40% of £1,554.75	£621.90

Monthly company car tax (2011/12)

20% Income Tax: £310.95 divide by 12 months	£25.91
40% income Tax: £621.90 divide by 12 months	£51.83

Customer services

Talk to us on 08457 745 745

No matter what the query, our dedicated call centre is always ready to listen. No matter how big or small the request, speak to one of our customer care advisors to see if they can help. The call centre is open from 8.30am-5.30pm. If you're calling out of hours, then a message can be left and you'll be contacted back.

Peace of mind with a Škoda warranty

In the first two years of owning your car, you'll get the peace of mind of a two year unlimited mileage warranty. In addition, you'll also get a further warranty on new vehicles supplied through the appointed dealer network until the vehicle has completed 60,000 miles or the end of the third year, whichever is sooner.

Your Fabia also benefits from a 3 year paint warranty and 12 year body protection warranty.

A network that's here to help

With 17 years in the top 10 of JD Power's customer satisfaction survey, our network of approximately 125 sales retailers know how to treat a customer. You can be sure that as a Škoda customer, your retailer will look after you from the moment you walk through the door, throughout the life of your Škoda. Your Fabia will be serviced and maintained to the highest standards by specially trained Škoda technicians. And when you need a spare part you'll be happy to know that most are held in stock, or can be ordered within 24 hours. So if top class customer satisfaction is what you're after, the Škoda network will be there for you.

Motability

People in receipt of the Higher Mobility Component of the Disability Living Allowance receive special help from Škoda. Preferential prices on low cost Contract Hire are available through your local approved Motability retailer. For full details, contact your retailer.

If your Škoda's in trouble, rely on Škoda Assistance

Completely free of charge, every new Škoda is covered by Škoda Assistance, provided by the RAC through a dedicated team. This cover lasts for 3 years, with no mileage limit. So if you ever break down, you can use the freephone number to call out someone who really knows about Škoda cars to help. This service is even available in Europe, so you don't need additional breakdown cover when you're driving on the continent.

Financing your Škoda

We all know that times are hard, so Škoda Finance specialises in providing funding solutions for Škoda drivers. Regardless of whether you're a private or business user, you can choose from a range of funding options.

Finance products available are:

- Solutions – a personal contract plan
- Hire purchase
- Lease purchase
- Finance lease
- Contract hire

With all Škoda Finance products you can choose a fixed-cost maintenance plan designed to help you budget accurately. No matter what finance product you choose, your local Škoda retailer will be able to provide you with a personalised quote that could meet your budget and vehicle needs. Škoda Finance is a trading name of Volkswagen Financial Services (UK) Limited, Brunswick Court, Yeomans Drive, Blakelands, Milton Keynes MK14 5LR. Registered in England number 2835230.

Adding that little extra to your car

If the standard specification and factory fitted options aren't enough for you, then why not take a look at our range of retailer fitted accessories? A separate accessories brochure can be found at your local retailer, or can be ordered by phoning our call centre, or by going on-line at www.skoda.co.uk

Škoda Insurance

We want you to start enjoying your new car from day one and thanks to Škoda Insurance complimentary seven day cover you can. Call free on 0800 316 7895, provide us with a few details, and we'll send a cover note to your retailer. They will then tax your car and you can drive it away. Telephone lines are open Monday to Friday 8am – 9pm and Saturday 9am – 5pm.

For details of our full range of insurance products visit insurewithskoda.co.uk. You can get an annual car insurance quote for your Škoda and buy it online too.

Škoda Insurance is a trading name of Volkswagen Insurance Service (Great Britain) Limited, an appointed representative of Volkswagen Financial Services (UK) Limited, registered in England number: 2835230 (registered office: Brunswick Court, Yeomans Drive, Blakelands, Milton Keynes MK14 5LR). Škoda Insurance motor insurance is sold, underwritten and administered by Allianz Insurance plc, registered in England number: 84638 (registered office: 57 Ladymead, Guildford, Surrey GU1 1DB). Both organisations are authorised and regulated by the Financial Services Authority (FSA), whose registration numbers are 311988 and 121849 respectively. Authorisation details can be checked on the FSA's register at fsa.gov.uk or call 0845 606 1234. Volkswagen Financial Services (UK) Limited and Allianz Insurance plc are not part of the same corporate group.





The information in this brochure referring to specification, design, equipment, material and external appearance relates to the time at which this brochure was printed. Whilst every effort is made to ensure its accuracy, the information in this brochure is not binding and is subject to alteration. Some illustrations in this brochure depict left hand drive models, with both standard and optional equipment shown. Please confirm exact specifications, prices and colour availability with your Skoda retailer who will be notified of any specification changes as they occur.

Edition: UK 07/11

Information: 08457 745 745

Internet: www.skoda.co.uk

E-mail: customerservices@skoda.co.uk

Welcome to your Skoda retailer