



Wir leben Autos.

**ALL ABOUT**

**ADAM.**







ADAM JAM in Pump up the Blue and White my Fire, 18" Twister wheels in Manogian with white clips.



# ADAM & YOU



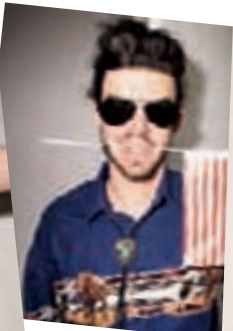
You're one of a kind and so is ADAM. What makes this car so different? It's not just the bold stance and the raucous colours. It's this: with ADAM, you have a say in the design of your car. How does that work? Simple. You can customize your car till you've got exactly what you want.

So ADAM is about customization. And because customization is about asserting your personality, buying an ADAM is inspirational stuff. To start you off, our designers put together three versions of ADAM: ADAM JAM, ADAM GLAM and ADAM SLAM. Take a look which design suits you best, then read on to discover all the details you can change.

Next stop is the online configurator where you can actually create your own ADAM. Or get a new angle on one of the cars you see here in the catalogue – you'll find the key specs near each picture.



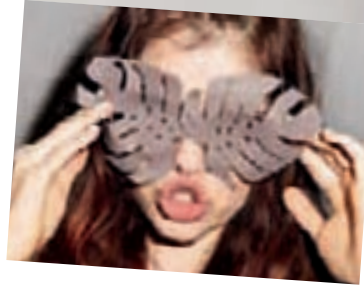
ADAM SLAM in James Blonde and I'll be Black, 18" Twister wheels in Technical Grey with black and yellow clips.







ADAM GLAM Extreme in The Greyfather and White my Fire, 17" Roulette wheels in Copper and White my Fire.

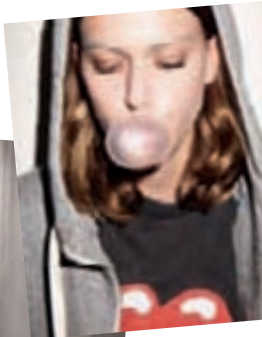


# CONTENTS

ADAM JAM	08
ADAM GLAM	10
ADAM SLAM	12
ENGINES	14
CUSTOMIZATION:	
BODY & ROOF COLOURS	16
BLACK & WHITE BODY PACKS	18
TWISTED PACKS	20
SINGLE TONE	22
BLACK & WHITE LINK EDITIONS	24
WHEELS	26
DECAL FOILS	28
SEATS	30
CEILING & DASH	32
COLOUR PACKS, MIRROR & MATS	34
DRIVER AIDS & COMFORT	36
INFOTAINMENT	38
ACCESSORIES	40
MOTORSPORT EDITION	42



ADAM GLAM in Purple Fiction and White my Fire, 17" Roulette wheels in Technical Grey and White my Fire.





**DON'T FOLLOW TRENDS.  
SET ONE.**







ADAM SLAM in Red 'n' Roll and I'll be Black, Carbon design mirror caps, 18" Twister wheels in Monoogian with four I'll be Black spoke clips and one Red 'n' Roll spoke clip.





The Pump up the Blue décors match the body colour of this ADAM JAM. Among the other highlights on show: Morrocana seats in Ocio White, White Leather Pack, IntelliLink infotainment system and Electronic Climate Control.



**INSIDE THE ADAM,  
OUTSIDE THE BOX.**





# ADAM JAM



ADAM JAM in Pump up the Blue and White my Fire, 18" Twister wheels in Manoogian with White my Fire clips.

## RULE NO. 1: ADAM IS ALL ABOUT INSPIRATION.

Bring home an ADAM JAM and your neighbour's going to know it – fresh colour combinations grab people's attention and keep it. Inject your personality with striking body colours, wheels and décor foils. Inside it's all about bold two-tone style.





2



3



4

1. **Why have one tone when you can have two?** ADAM JAM's stand-out outside has the inside to match. The black & white cabin is a real eye-catcher.
2. **The key to your creation.** Your ADAM keys hold their own on any table. Each one matches your body colour of choice.
3. **Loud and proud.** The ADAM badge says it all.
4. **Leather-wrapped steering wheel plus remotes.** ADAM JAM's easy-grip wheel has all the bells and whistles – for wireless phoning, tuner surfing and laid-back cruising. And it's standard on every ADAM.

## ADAM JAM EXTREME



**Go Extreme.** Style your car to the max with an ADAM JAM Extreme. What do you get? A coloured roof, front grille bar and matching 17" Hurricane alloy wheels – in White my Fire or I'll be Black. That's not all. You get Splats on the mirrors, floor mats and around the outside pillars. The dash and door trim in Edged Lines complements the whole look.





# ADAM GLAM



ADAM GLAM in Purple Fiction and White my Fire, 17" Roulette wheels in Technical Grey and White my Fire.

## RULE NO. 2: NO TWO ADAMS ARE THE SAME.

Stop counting the likes and start counting the loves. In ADAM GLAM you're dressed to impress. When you customize this car you don't go with a trend, you start a whole new one. Take your seat under a panoramic glass roof, immerse yourself in seven-speaker surround sound and take a ride in a contemporary icon of style.



1





2



3

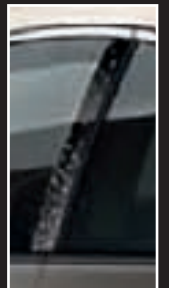


4

1. **Everyone's crazy about sharp-dressed glam.** Every ADAM GLAM comes with seats and surfaces in Cocoa, Purple or Black. Chrome sill plates match the gleaming door handle inserts and window frames.
2. **Let there be light.** From the inside, the ADAM GLAM's fixed sunroof looks even better.
3. **Set your season.** Your Electronic Climate Control (ECC) automatically keeps the car as warm or cool as you want.
4. **See and be seen.** Safer, smarter, cooler and cleaner. With LED Daytime Running Lights, it's all good.

## ADAM GLAM EXTREME

**Pump up the glam.** Let your imagination off the leash and take your style to town with an upgrade to the ADAM GLAM Extreme Pack. The roof in White my Fire cuts an elegant curve on those big 17" Roulette alloys in Copper and White. Dash, mirrors, B-pillar decals and floor mats come in Fly for the finishing touch.





# ADAM SLAM



ADAM SLAM in James Blonde and I'll be Black, 18" Twister wheels in Technical Grey with I'll be Black and James Blonde clips.

**RULE NO. 3:  
ADAM DOESN'T DO RULES.**



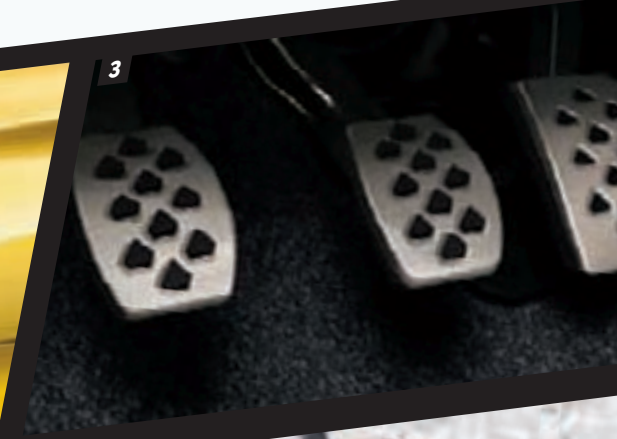
ADAM SLAM has attitude. It has energy. And the agility of a German-engineered sports chassis. Make a cult of your car and park your personality all over its fresh and muscular design.



2



3



1. **A HIGH WAITING TO HAPPEN.** With its vivid colours and racing steering wheel, just taking your seat in ADAM SLAM is a buzz.
2. **LIGHT SHOW.** Rear LEDs make for a powerful finish.
3. **ALL-METAL SPORTS PEDALS.** Some optional extras don't just look good, they actually give you more grip.

## ADAM SLAM EXTREME

**Crack open your comfort zone.**

The optional ADAM SLAM Extreme has the stand-out styling to turn heads – and keep them turned. The roof and bonnet get the full sports treatment with racing stripes that match the beefed-up 18" alloy wheels. Carbon-look wing mirrors and grille bar give a fierce front. Add the OPC Pack (below) to take it to the absolute extreme. The motorsport theme continues inside with décors, floor mats and rear-view mirror cap. As with all ADAM Extremes, the steering wheel, gear stick and handbrake lever are coloured leather. For racing red trim, Red Leather is the pack of choice.





# FIRE. FRIENDLY

Three ADAM styles, three engines, infinite options. Whichever combination you choose, ADAM is light on its feet and efficient with fuel. The most economical engine is the 1.2 litre and for even better consumption you can order all three with the optional ecoFLEX Technology Pack. The sportiest motor is the 1.4 litre. With a lively 74 kW (100 hp), it's the perfect choice for the muscular ADAM SLAM. Order your ADAM with 17" or 18" alloys and you get the added fun of a taught sports chassis.



## CONSUMPTION AND EMISSIONS

Engines

Emission standard

Transmission

Fuel

Fuel consumption in l/100 km<sup>1</sup>

Urban

Extra-urban

Combined

CO<sub>2</sub> emission combined in g/km<sup>1</sup>



The ecoFLEX Technology Pack cuts down on consumption, costs and CO<sub>2</sub> emissions using features like Start/Stop, which saves fuel by automatically cutting the engine when you stop, for example at traffic lights. Another option to save is the 1.4 LPG engine for combined operation with low-cost liquefied petroleum gas (LPG). Your ADAM has some great standard features that make driving around town easier, too. City Mode lightens the power-assisted steering to take the weight off your arms when you're parking and manoeuvring, while ESP® helps with steering precision. It automatically adjusts the sensitivity for different driving situations. Another highlight is Hill Start Assist, which holds the brakes so you can pull away safely on steep gradients.



ADAM SLAM in Papa don't Peach/White my Fire, 18" Twister wheels in Manoogian with White my Fire clips.

	1.2 ECOTEC® with Start/Stop System (51 kW/70 hp)	1.2 ECOTEC® (51 kW/70 hp)	1.4 ECOTEC® with Start/Stop System (64 kW/87 hp)	1.4 ECOTEC® (64 kW/87 hp)	1.4 ECOTEC® (64 kW/87 hp)	1.4 ECOTEC® with Start/Stop System (74 kW/100 hp)	1.4 ECOTEC® (74 kW/100 hp)
	EURO 5	EURO 5	EURO 5	EURO 5	EURO 5	EURO 5	EURO 5
	MT-5	MT-5	MT-5	MT-5	MT-5	MT-5	MT-5
	PETROL	PETROL	PETROL	PETROL	LPG (PETROL)	PETROL	PETROL
							7.3
					8.8 (7.1)	6.6	4.4
					5.8 (4.6)	4.2	5.5
					6.9 (5.5)	5.1	129
					112 (129)	119	
	6.5	7.1	6.6	7.3			
	4.2	4.2	4.2	4.4			
	5.0	5.3	5.1	5.5			
	118	124	119	129			

MT-5 = 5-speed manual transmission. \*In acc. with regulation R (EC) No. 715/2007 (in the version respectively applicable). The figures for fuel consumption and CO<sub>2</sub> emissions do not relate to a specific vehicle and are not part of an offer. They are provided only for the purpose of comparison between different vehicle variants. All information was accurate and up to date at the time of going to press. The company reserves the right to alter engine specifications at any time, which may influence the content of the shown data. Please consult your Opel dealer for the latest information. All figures quoted relate to the EU base model with standard equipment. Fuel consumption data and CO<sub>2</sub> emission data are determined according to regulation R (EC) No. 715/2007 (in the version respectively applicable), taking into consideration the vehicle weight in running order, as specified by the regulation. Additional equipment may lead to slightly higher results than the stated consumption and CO<sub>2</sub> figures.



**YOURS.**

**TRULY.**

I'll be Black.

Sweet Greens.

A Star is Brown.

The Greyfather.

Buzz Lightgreen.

Red 'n' Roll.

James Blonde.

I'll be Black.





White my Fire.

Men in Brown.



Greenspotting.

Pump up the Blue.

Papa don't Peach.

Purple Fiction.

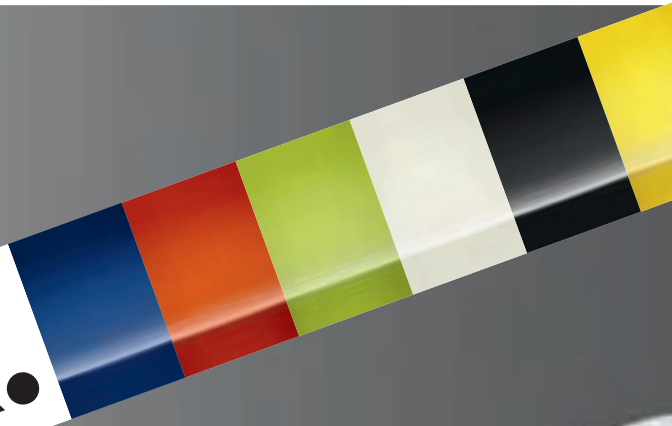
Saturday White Fever.

The exterior colours are a big part of your car's personality. And because ADAM stands for self-expression, you get a lot of colours to choose from. On top of the main body colour, you can create a cool two-tone look with one of three optional Roof Packs with a tinted glass rear window and matching wing mirrors in I'll be Black, White my Fire or Men in Brown. There are 12 body paints, which makes how many different colour combinations in total? 27.





**BLACK  
OR WHITE.**



ADAM WHITE in Saturday White Fever! I'll be Black,  
18" Twister wheels in Technical Grey with I'll be Black clips.





The Black or White Pack is personalisation for purists. No matter the colour of your ADAM, you can re-style it with a pack that transforms the roof, wing mirrors and alloy wheels in striking white – or black. Inside, the instrument panel, centre console and door inlays get the same radical treatment, and the rear windows are tinted. To take your black or white styling up another notch, you can opt for an Extra White or Extra Black Pack that adds a white or black front grille bar, rear-view mirror and bigger, bolder wheels.

1. 16" Horns alloy wheel, I'll be Black
2. 17" Roulette diamond-cut alloy wheel, I'll be Black
3. 17" Hurricane alloy wheel, I'll be Black
4. 16" Boomerang diamond-cut alloy wheel, White my Fire
5. 17" Roulette diamond-cut alloy wheel, White my Fire
6. 17" Hurricane alloy wheel, White my Fire

Not forgetting the 18" Twister wheel (in the main picture) which comes in a choice of two finishes with patented clips that are colour-coordinated to match the roof or body paint.

Of course, you can order every set of wheels shown here with other body colours, as part of your own personalized pack.



ADAM BLACK in I'll be Black/White my Fire, 18" Twister wheels in Manoogian with White my Fire clips.



4



5



6



# YOUR TURN.

As ADAM Design Chief, you get to have everything just as you want it. So even if you've already added an Extreme Pack, you can still customize your ADAM more with one of three 'Twisted Packs'. That's a combination of colour-coordinated components that add an unexpected dimension to the unique look of your car.





## TWISTED GREEN

Give your ADAM JAM a fresh twist with key components in vibrant green.

Details in Greenspotting include:

- Front grille bar
- Wing and rear-view mirrors
- Décor inserts on the dashboard, centre console and doors
- 16" Boomerang diamond-cut alloy wheels



## TWISTED BROWN

In the ADAM GLAM you're not twisted. You're totally hooked.

Details in A Star is Brown include:

- Wing mirrors
- 17" Roulette diamond-cut alloy wheels

Other coloured highlights:

- Chrome front grille bar
- White my Fire rear-view mirrors
- Pearl White décor inserts on the dashboard, centre console and doors



## TWISTED RED

ADAM JAM, ADAM GLAM and ADAM SLAM all come with a fiery flavour.

Details in Red 'n' Roll include:

- Front grille bar
- Wing and rear-view mirrors
- Décor inserts on the dashboard, centre console and doors
- 17" Swiss Blade diamond-cut alloy wheels in High Gloss Black with Red 'n' Roll outer rims





# SINGLES PARTY.

If you like cars with a bold, one-colour look, the standard single-tone roof and body is just the thing. For example, ADAM JAM, ADAM GLAM and ADAM SLAM in all-white, all-red, all-black or all-green. And if you have a vision, they make a great canvas for personalization.



## SINGLE-TONE ADAM SLAM IN I'LL BE BLACK

Personalization highlights include:

- Tinted rear side windows and roof spoiler
- 17" Swiss Blade alloy wheels in High Gloss Black with White my Fire outer rim
- Stripe decals on bonnet, door and roof, unique to ADAM SLAM, in White my Fire
- Little Twist Pack: wing mirrors and front grille bar in White my Fire



## SINGLE-TONE ADAM JAM IN BUZZ LIGHTGREEN

Personalization highlights include:

- Tinted rear side windows and roof spoiler
- 18" Twister alloy wheels in Manooagian with I'll be Black clips
- Little Twist Pack: wing mirrors and front grille bar in High Gloss Black



**SINGLE-TONE ADAM JAM  
IN RED 'N' ROLL**

Personalization highlights include:

- Tinted rear side windows and roof spoiler
- 17" Hurricane alloy wheels in White my Fire
- Splat decals on wing mirrors, unique to ADAM JAM
- Front grille bar in White my Fire



**SINGLE-TONE ADAM GLAM  
IN SATURDAY WHITE FEVER**

Personalization highlights include:

- Tinted rear side windows and roof spoiler
- 17" Roulette diamond-cut alloy wheels in Technical Grey and I'll be Black
- Black Fly decals on B-pillars and wing mirrors, unique to ADAM GLAM
- Front grille bar in High Gloss Black





ADAM loves being a game-changer and the White and Black Link Limited Editions prove that. ADAM doesn't get any whiter – or blacker – or better connected than this, with built-in IntelliLink, cutting-edge Siri Eyes Free voice control and the optional FlexDock® cradle for full iPhone integration. From the eye-bending interiors to brushed aluminium highlights and 18" alloys with bespoke finishes, this is sensational ADAM style in its purest form. Customization? It's already done.

# JUST.



## ADAM BLACK LINK LIMITED EDITION

- Highlights for Black:  
ADAM SLAM content plus ...
- Exclusive brushed aluminium front grille bar and wing mirrors
  - Exclusive 18" Twister alloys in High Gloss Black
  - 5 wheel clips in I'll be Black
  - Bespoke two-tone interior with Morrocana seats in Ocio Black
  - Roof spoiler and tinted rear windows
  - White leather steering wheel, gear stick and handbrake
  - Instrument panel, centre console and door décors in Japan Paint
  - IntelliLink including Siri Eyes Free functionality
  - Optional FlexDock® with Universal Smartphone Holder
  - Sports pedals



## ADAM WHITE LINK LIMITED EDITION

Highlights for White:

- ADAM SLAM content plus ...
- Exclusive brushed aluminium front grille bar and wing mirrors
- Exclusive 18" Twister alloys in Saturday White Fever
- 5 wheel clips in Saturday White Fever
- Bespoke two-tone interior with Morrocana seats in Ocio White
- Roof spoiler and tinted rear windows
- White leather steering wheel, gear stick and handbrake
- Instrument panel, centre console and door décors in Saturday White Fever
- IntelliLink including Siri Eyes Free functionality
- Optional FlexDock® with Universal Smartphone Holder
- Sports pedals



**SIRI EYES FREE**  
THROUGH YOUR iPhone.

# SAYIN'.

**SHOUT-OUT TO SIRI!** Siri Eyes Free – the intelligent personal assistant comes standard with your ADAM Limited Edition White or Black Link through your iPhone. Using a steering wheel-mounted button, you can use your voice with Siri to control your iPhone with both eyes on the road – and your hands on the wheel of the best connected ADAM yet.<sup>1</sup>







Standard on  
ADAM SLAM

Standard on  
ADAM GLAM

Standard on  
ADAM JAM





31. James Blonde clips (one clip per wheel)  
32. Red 'n' Roll clips (one clip per wheel)

All the coloured clips are also available as accessories.

# SIGNATURE

# MOVE.



If your ADAM is urban art, the wheels are your tag. And ADAM gives you a whole alphabet of styles to sign off with. Choose from ten alloy wheel designs in 32 different finishes, including six 18" Twister wheels that come with different coloured clips. To max out the colours, fit extra clips in Red 'n' Roll or James Blonde.

- 1. 15" Rotation alloy wheel in Silver
- 2. 16" Horns alloy wheel in Silver
- 3. 16" Horns alloy wheel in I'll be Black
- 4. 16" Vintage alloy wheel in Silver
- 5. 16" Boomerang diamond-cut alloy wheel in Techni-cal Grey
- 6. 16" Boomerang diamond-cut alloy wheel in Green-spotting
- 7. 16" Boomerang diamond-cut alloy wheel in White my Fire
- 8. 16" Triple Cross alloy wheel in Titan

- 9. 16" Triple Cross alloy wheel in Manooagian
- 10. 17" Hurricane alloy wheel in Manooagian
- 11. 17" Hurricane alloy wheel in I'll be Black
- 12. 17" Hurricane alloy wheel in White my Fire
- 13. 17" Swiss Blade alloy wheel in Sterling Silver
- 14. 17" Swiss Blade alloy wheel in High Gloss Black with White my Fire outer rim
- 15. 17" Swiss Blade alloy wheel in High Gloss Black with Red 'n' Roll outer rim

- 16. 17" Roulette alloy wheel in Technical Grey
- 17. 17" Roulette diamond-cut alloy wheel in Technical Grey
- 18. 17" Roulette diamond-cut alloy wheel in Technical Grey and White my Fire
- 19. 17" Roulette diamond-cut alloy wheel in Technical Grey and A Star is Brown
- 20. 17" Roulette diamond-cut alloy wheel in Technical Grey and Sweet Greens

- 21. 17" Roulette diamond-cut alloy wheel in Copper
- 22. 17" Roulette diamond-cut alloy wheel in Copper and White my Fire
- 23. 17" Roulette diamond-cut alloy wheel in High Gloss Black
- 24. 18" Twister alloy wheel in Technical Grey with Manooagian clips
- 25. 18" Twister alloy wheel in Technical Grey with I'll be Black clips

- 26. 18" Twister alloy wheel in Technical Grey with White my Fire clips
- 27. 18" Twister alloy wheel in Manooagian with Technical Grey clips
- 28. 18" Twister alloy wheel in Manooagian with I'll be Black clips
- 29. 18" Twister alloy wheel in Manooagian with White my Fire clips
- 30. 18" Turbine alloy wheel in Sterling Silver



# CREATE SOME DIVERSITY.

Every ADAM is one in a million. ADAM has so many options that there are virtually unlimited design variations. The grille bars, decal foils and mirror caps on this page take the number of possible exterior combinations over 60,000. Make a note of your choices and you can check out your final look in the configurator online.

## FRONT GRILLE BARS

High Gloss Black

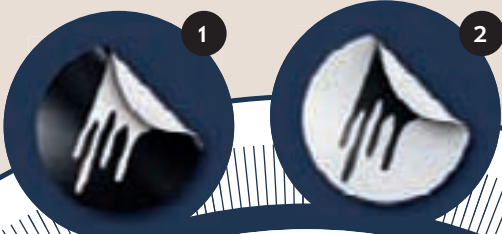
White my Fire

Red 'n' Roll

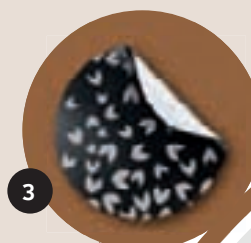
Greenspotting

Carbon design

## ADAM JAM



## ADAM



ADAM JAM in Pump up the Blue and White my Fire with white splats, mirror caps and grille bar. 17" Hurricane wheels in White my Fire.



# ADAM SLAM



ADAM SLAM in James Blonde and I'll be Black with I'll be Black and James Blonde stripes, plus Carbon design grille bar and mirror caps. 18" Twister wheels in Technical Grey with I'll be Black and James Blonde clips.

ADAM GLAM in A Star is Brown and I'll be Black with B-pillar decals and mirror caps in Fly design and light Gloss Black grille bar. 17" Roulette wheels in Technical Grey and A Star is Brown.

## GLAM



## EXTERIOR DECAL PACKAGES

### SPLATS ON THE FRONT AND REAR PILLARS

1. White my Fire
2. I'll be Black

### FLY ON B PILLAR

3. Fly design in Black

### STRIPES ON THE ROOF, BONNET AND DOORS

4. I'll be Black<sup>1</sup>
5. White my Fire<sup>1</sup>
6. James Blonde<sup>1</sup>
7. Red 'n' Roll<sup>1</sup>
- 8.-12. Two-tone stripes<sup>2</sup>:  
one colour on roof and second colour on bonnet and doors.  
These can be interchanged.

## WING-MIRROR CAPS

- A. Splats in Crème White & Black
- B. Fly design in Black
- C. Carbon design

<sup>1</sup> Available in combination with contrasting body colours only.  
<sup>2</sup> Available in combination with two-tone models only.



# ART HOUSE.

The seats of your ADAM have special sports bolsters, so they're super comfortable and, of course, they're customizable. But that's not all. Instead of the usual bland fare, ADAM serves up a textural treat. With a selection of 15 fabulous leathers and fabrics, you can create an interior with an attitude — and a style all its own.



2

3

7

## COCOA

For ADAM GLAM

Lean back and lap up the luxury. The lower half comes in a classy brown, the top in elegant black.

1. Manchester Cocoa cloth seats
2. Bristol Cocoa Morrocana seats
3. Cocoa leather seats



6

5

4





# PURPLE

**For ADAM GLAM**  
Fresh as a berry with a glamorous two-tone touch.

- 4. Manchester Purple cloth seats
- 5. Bristol Purple Morrocana seats
- 6. Purple leather seats



# BLACK

**For ADAM JAM, ADAM GLAM & ADAM SLAM**  
If you like your décors brash and bold, the perfect backdrop is black.

- 7. Black leather seats
- 8. Imix Black cloth seats
- 9. Ocio Black Morrocana seats
- 10. Manchester Black cloth seats
- 11. Bristol Black Morrocana seats
- 12. Superheroes Black Morrocana seats
- 13. Superheroes Black Morrocana seats with Yellow stripes



# WHITE & BLACK

**For ADAM JAM**  
Is that black on white or white on black? Who cares, just as long as it's funky!

- 14. Imix White cloth seats
- 15. Ocio White Morrocana seats





## PAINTED DÉCORS

For the centre console,  
dashboard and doors

1. Buzz Lightgreen
2. Greenspotting
3. Pump up the Blue
4. Papa don't Peach
5. Rose Metallic
6. Tinted Steel
7. Red 'n' Roll
8. James Blonde
9. Japan Paint
10. Pearl White

## FOIL DÉCORS

ADAM JAM

11. Edged Lines
12. Bitmap

ADAM GLAM

13. Fly
14. Starstruck

ADAM SLAM

15. Yellow Universe
16. Silver Universe

## BACKLIT DÉCORS

ADAM JAM, ADAM GLAM &  
ADAM SLAM

17. Silver Fireflies

ADAM GLAM

18. Gold Fireflies

1

2

3

4

5

6

7

8

9

10





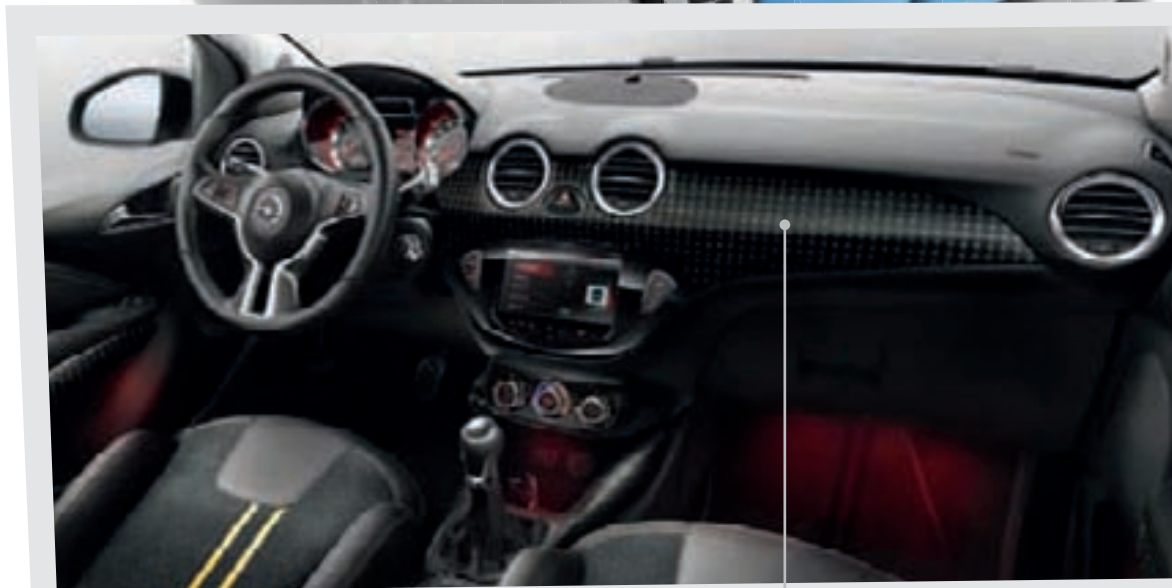
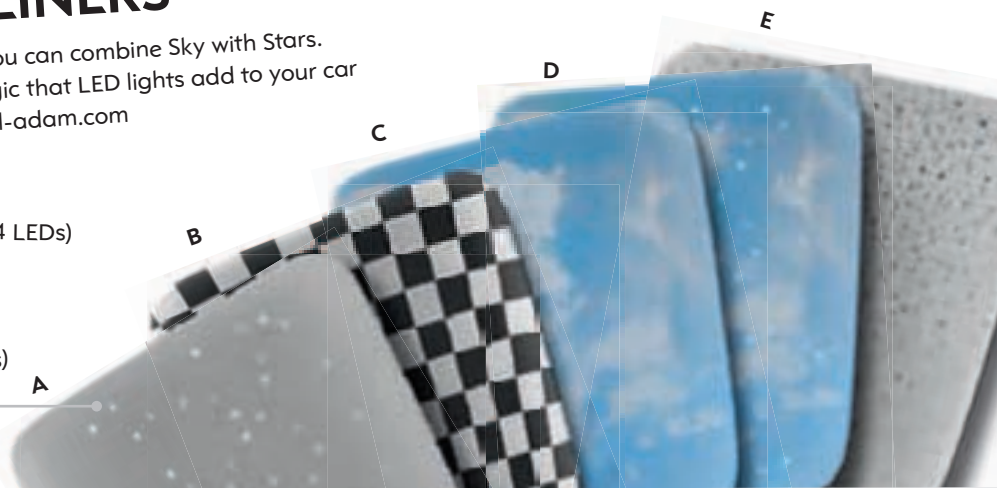
# A DIFFERENT KIND OF DIFFERENT.

Ever driven a car where the stars were on the inside of the ceiling? Or a chess board? Or cotton-wool clouds floating in a blue summer sky? Now's your chance. Believe it or not, in ADAM you get to pick the design over your head. Choose one of three printed headliners or a version that lights up like a starry night. You can redesign the rest of the interior too, with a choice of 18 décor inserts for the dashboard, centre console and doors.

## HEADLINERS

If you like, you can combine Sky with Stars. See the magic that LED lights add to your car at [www.opel-adam.com](http://www.opel-adam.com)

- A. Stars (with 64 LEDs)
- B. Go
- C. Sky
- D. Sky & Stars (with 64 LEDs)
- E. Fly



## INTERIOR LIGHTING

The Coloured Interior Light Pack lets you experiment with the ambient lighting in your car. You can switch between eight different colours and, of course, when the colour of the lighting changes so does the mood. For a better idea of how it works, make a date with your local Opel dealer. Customized car design comes of age with ADAM – with options where you didn't know options could be.

11

12

13

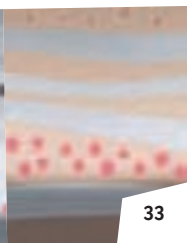
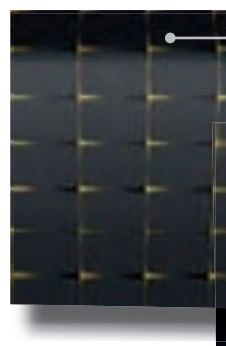
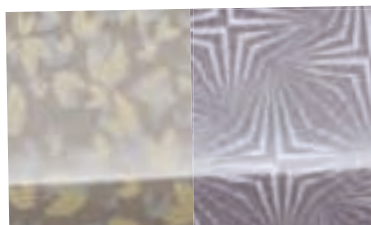
14

15

16

17

18





# STYLISTS WANTED.

18 dashboard colours and 15 seat trims sound like a lot but a little ADAM magic actually gives you many times that number. How? By adding optional interior colour leather packs that change the look and feel of the steering wheel, handbrake and gear shifter. You can also opt for rear-view mirror caps and floor mats to match.



1. Cocoa for ADAM GLAM.

## VELOUR FLOOR MATS

1. Splat in Jet Black (ADAM JAM)
2. Fly in Cocoa (ADAM GLAM)
3. Stripes in Jet Black (ADAM SLAM)
4. Black with Jet Black piping
5. Durable all-weather rubber mat (ADAM GLAM)

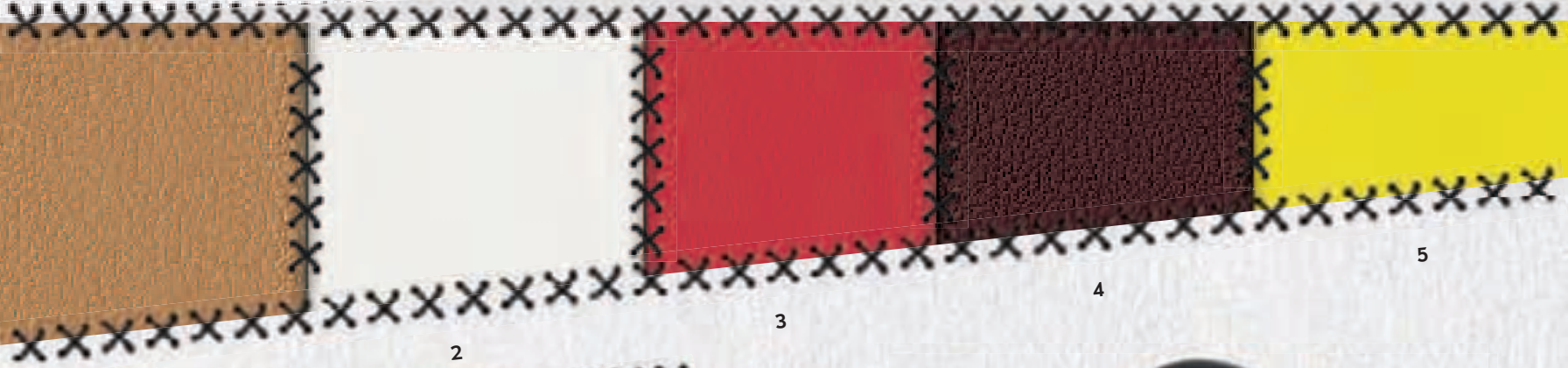
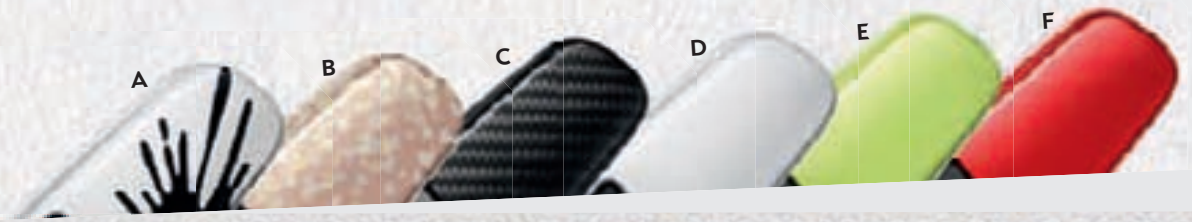
This is just a selection of all the available mats. Go online for more, or visit your local Opel dealership.





# REAR-VIEW MIRROR COVERS

- A. Splat (ADAM JAM only)
- B. Fly (ADAM GLAM only)
- C. Carbon design
- D. White my Fire
- E. Greenspotting
- F. Red 'n' Roll



## INTERIOR COLOUR LEATHER PACKS

Wrap your steering wheel, gear shifter and handbrake in luxurious coloured leather.



2. White for ADAM JAM.



3. Red 'n' Roll for ADAM JAM, ADAM GLAM & ADAM SLAM.



5. James Blonde for ADAM JAM & ADAM SLAM.



4. Purple for ADAM GLAM.



## STAND OUT AND FIT IN.

If you like sitting back while other people do the work, you're going to love Advanced Park Assist 2 (APA 2). First of all, it lets you know when you drive by a suitable parking space. Then it manoeuvres the car into the space at exactly the right angle. You can actually take your hands off the wheel and watch your car steer itself while you work the pedals and gears. The graphics appear on the big IntelliLink display, which makes them easy to see – and the whole system easy to use.



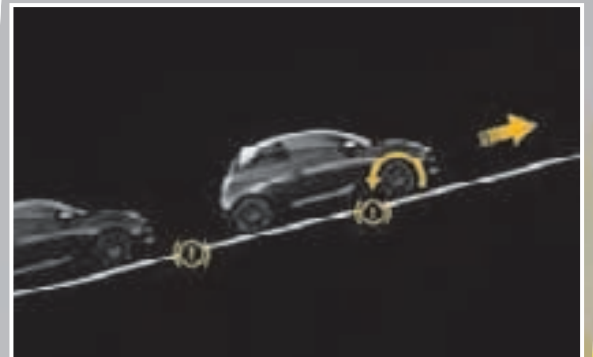
## WE'RE ON YOUR SIDE.

APA 2 comes with another clever safety option. Side Blind Spot Alert (SBSA) is basically an intelligent wing mirror that uses a sensor to detect traffic in the blind spot alongside your ADAM. If you indicate that you're about to change lanes toward another vehicle, it warns you by flashing a light in the mirror.



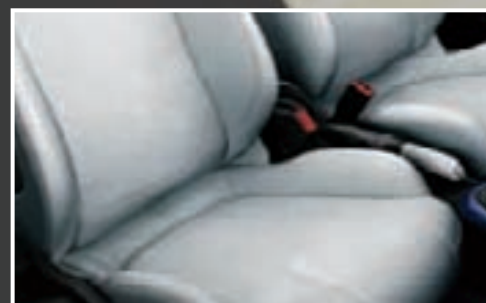
## AND WE BACK YOU.

The standard Hill Start Assist function allows you stress-free parking or pulling away on a slope, without use of the handbrake. When the brake pedal is released it maintains the brake pressure for up to 2 seconds to prevent backward moving.



Put frost back in its box with the ADAM Winter Pack. It heats the front seats or steering wheel – or both. You control the whole system with a simple switch on the dash.

## LOCAL WARMING.







## EYE CANDY.

The Sight and Light Pack covers three clever features that take the strain off your eyes and a load off your mind: the electrochromatic rear-view mirror, automatic headlamp control and the rain sensor. The electrochromatic mirror cuts down the glare from cars behind you at night by automatically adjusting the amount of light it reflects. Automatic headlamp control monitors light conditions and makes night driving safer and easier by turning on your headlights when it gets dark – so you don't have to think about it. It even recognizes when you drive into a tunnel. The rain sensor detects rain and turns on your windscreen wipers automatically – so you don't have to!

# PARK AND PLAY.

ADAM offers a whole stack of high tech options that make driving simpler, safer and more comfortable – plus they help free up your time. Like FlexFix® and Advanced Park Assist 2. One helps you park your bike on the back bumper, the other helps you park your car without bumping the back.

## OUTER SPACE.

Slide the FlexFix® bike carrier out of the bumper to mount a bike weighing up to 30 kg on the back of your car. When you're done, you just slide FlexFix® back inside. No one will ever know it was there. Add the optional FlexFix® extension to mount another bike that weighs up to 20 kg. Even when you're fully loaded with bikes, you can still get at the boot, by simply tilting FlexFix® and the extension out of the way. And of course you can still use parking aids like Advanced Park Assist 2 – the rear sensors work fine.







You can fit every ADAM with the latest technology, like optional 'IntelliLink' which is a smart all-in-one multimedia system with a big, high-resolution, 7-inch (17 cm) colour display. IntelliLink not only looks great but is extra easy to use – directly via the touch screen or steering wheel controls. Add optional premium Infinity speakers for the perfect all-round entertainment and sound system.

## YOUR OS



**IntelliLink.** IntelliLink is designed to support<sup>1</sup> portable Bluetooth® and USB audio devices, so you

can hook up your smartphones or tablets to make calls and access your own music, photos and videos<sup>2</sup>. If you connect with USB, IntelliLink displays Gracenote® info and album art. Its built-in smartphone link also works with Opel's BringGo portable navigation app and other popular apps like

Stitcher™ – and there are more on the way. See IntelliLink in action at [www.opel-adam.com](http://www.opel-adam.com)

# BRING

# IT

# ON.

## SIRI EYES FREE THROUGH YOUR iPhone.

'Read that message'. –  
'Eve says, "On my way. See you soon".'

Play a song, make a call or send a text – with your eyes on the road and your hands on the steering wheel. Siri Eyes Free – the intelligent personal assistant is integrated in ADAM through your iPhone making your ride more fun and safe. Using a button on ADAM's steering wheel, iPhone<sup>3</sup> owners can ask Siri to call people, play music, hear and compose text messages, dictate e-mails, hear new notifications, get directions, add reminders and much more. And with ADAM's optional FlexDock® cradle you have your Apple device<sup>3</sup> front and centre and can use Siri Eyes Free to voice control turn-by-turn navigation on Apple Maps and ask, 'Are we there yet?'. Thanks, Siri.





## YOUR APPS



**Stitcher™.** The free Stitcher™ app automatically streams the latest episodes of your favourite podcasts and radio shows to your smartphone or tablet, and lets you 'stitch' them together to create customized shows with your own personal mix of news, comedy, music, sports and talk. [www.stitcher.com](http://www.stitcher.com)



**TuneIn.** Also available free from Google Play Store or iTunes, TuneIn is live internet digital radio. Listen live to 70,000 Music, Sports, News and Talk radio stations from all over the world. [www.tunein.com](http://www.tunein.com)



**BringGo.<sup>4</sup>** BringGo is a mobile app that combines with the IntelliLink display to give you integrated fully functional satellite navigation without spending big on a conventional sat nav system. You just download the BringGo app to your smartphone or tablet, connect to the display via USB or Bluetooth®, and BringGo beams your maps and routes to the big screen. Of course, it'll guide you turn-by-turn to your destination just like a regular sat nav. [www.bringgo.com](http://www.bringgo.com)



## YOUR MUSIC

### CD/radio system with Bluetooth®.

The CD radio 3.0 BT infotainment system comes standard on every ADAM. You get an AM/FM radio plus Bluetooth®, USB and aux-in. For the ultimate in integration, upgrade to the optional IntelliLink multimedia system.



### Sound this out.<sup>5</sup>

Six premium speakers and a subwoofer. 315 watts. Bombastic bass and exquisite treble. Infinity badge. Enough said.




### FlexDock®.


The intelligent option for accessing your smartphone or portable sat nav in the car and keeping it safe in easy reach on the dash. The FlexDock® mount is connected to the car's sound system so you can make or take calls and stream media from your MP3 player or smartphone to the central display – completely cable-free. The FlexDock® universal smartphone cradle is suitable for about 70% of the current smartphones, including the iPhone 5, and charges the batteries. For charging other devices, there's a handy 12-volt socket.

<sup>1</sup> Different systems and apps work with different devices. To check compatibility for your devices, go to [www.opel-adam.com](http://www.opel-adam.com) <sup>2</sup> Video clips and slideshows will not display while the car is moving. <sup>3</sup> Compatible with the following Apple devices: Apple iPhone 4S & iPhone 5, Apple iPad (3rd & 4th gen.) & iPad mini, Apple iPod touch (4th gen.). <sup>4</sup> BringGo is only compatible with Opel ADAM vehicles equipped with IntelliLink. Technology changes frequently. Buyers are responsible for verifying phone compatibility and available memory before purchasing the BringGo app. Refer to [www.bringgo.com](http://www.bringgo.com) for more information. <sup>5</sup> Available as an option only.





**Cargo box with lid.** Conceal your valuables from view and get your luggage space perfectly organized under the lid in the design of your choice.



**Roof base carrier and ski carrier.** Skiing in the Alps ... surfing in the Algarve ... with the optional roof base carrier and attachments, ADAM's ready to go.



**Windscreen protector.** Save on scraping in winter and keep your car cool in summer. Fold the protector up and it fits in the glove box.



**Luggage net.** Stop bottles and balls rolling around in the boot.



# ESSENTIAL STREETSMARTS.


Opportunities to customize your ADAM don't stop with colours, rims, trims and the rest. There are far too many accessories and packs to list them all here, but you'll find the whole range online or at your dealer. We've picked out a few highlights to give you an idea ...



### Stylish valve covers.


You've ordered your alloys. And maybe some clips to match. Now take your look to the next level with some stand-out valve decoration.

If you want to change the look of your ADAM after you get it, the different dashboards, logo bars, mirror caps and décor foil packages are also available separately as accessories. Use the online configurator to check out the full range of options.




### Outdoor cover.

You can't show it off all the time! If you're away for a long period, it's worth keeping your car under wraps – with a smart, ADAM-branded, all-weather cover.



### Hard cargo tray.

Protect the inside of the boot from scratches or spills and sharp or scruffy stuff.



### Roof spoiler.

Give your ADAM the look that fits your driving ambitions.





**NO KIDDING.**





ADAM SLAM Motorsport Edition in Saturday White Fever.

Opel Motorsport is back with a vengeance. Crackling and roaring with the ADAC ADAM Rallye Cup series, the Motorsport Edition is here to celebrate that fact. Based on the ADAM SLAM, the Motorsport is a stunner – inside and out. You are in for a raucous drive.

Highlights include:

- ADAM SLAM 'Superheroes' sports seats in Black Morrocana
- Alloy sports pedals
- Opel Motorsport sill plates
- Opel Motorsport floor mats
- Instrument panel décor in Opel Motorsport Design
- Door and centre console décors in Japan Paint
- Opel Motorsport exterior foils derived from ADAM Rallye Cup
- Badge on B-pillar
- 17" twin-spoke alloy wheels in black or white
- Black grille bar and wing mirrors
- Opel Motorsport key
- Sport Pack
- Roof mouldings in Saturday White Fever





*ADAM JAM in Greenspotting and I'll be Black with black splats  
and 17" Hurricane alloy wheels in White my Fire.*



# GO CONFIGURE @WWW.OPEL.COM

Go online to try out your design ideas in real time – and stamp your personality all over your car.





## TYRE LABELLING

Dimensions	185/65 R 15	195/55 R 16	215/45 R 17	225/35 R 18
Tyre Fuel Efficiency Rating	B	C-B	C	E
Tyre Wet Grip Rating	B	B	B	B
Tyre Noise Rating (dB)	70	71	71	77
Sound Class				

Some illustrations in this brochure contain special equipment not included in standard delivery. The information contained in this brochure was accurate at the time of going to press. We reserve the right to make changes in design and equipment. The colours printed in the brochure only approximate actual colours. Illustrated optional equipment is available at extra charge. Availability, technical features and equipment provided on our vehicles can vary outside of the Federal Republic of Germany. Information about Design for Recycling, take-back locations for End of Life Vehicles (ELVs) and the recycling of ELVs can be found on the Internet page [www.opel.com](http://www.opel.com). For precise information on the equipment provided on our vehicles, please contact your local Opel partner.

ADAM OPEL AG, Rüsselsheim

Edition 08/13

NSO/MY14



PEFC certified

This brochure is from sustainably managed forest and controlled sources.

[www.pefc.org](http://www.pefc.org)