

DS AUTOMOBILES

SPIRIT OF  
AVANT-GARDE



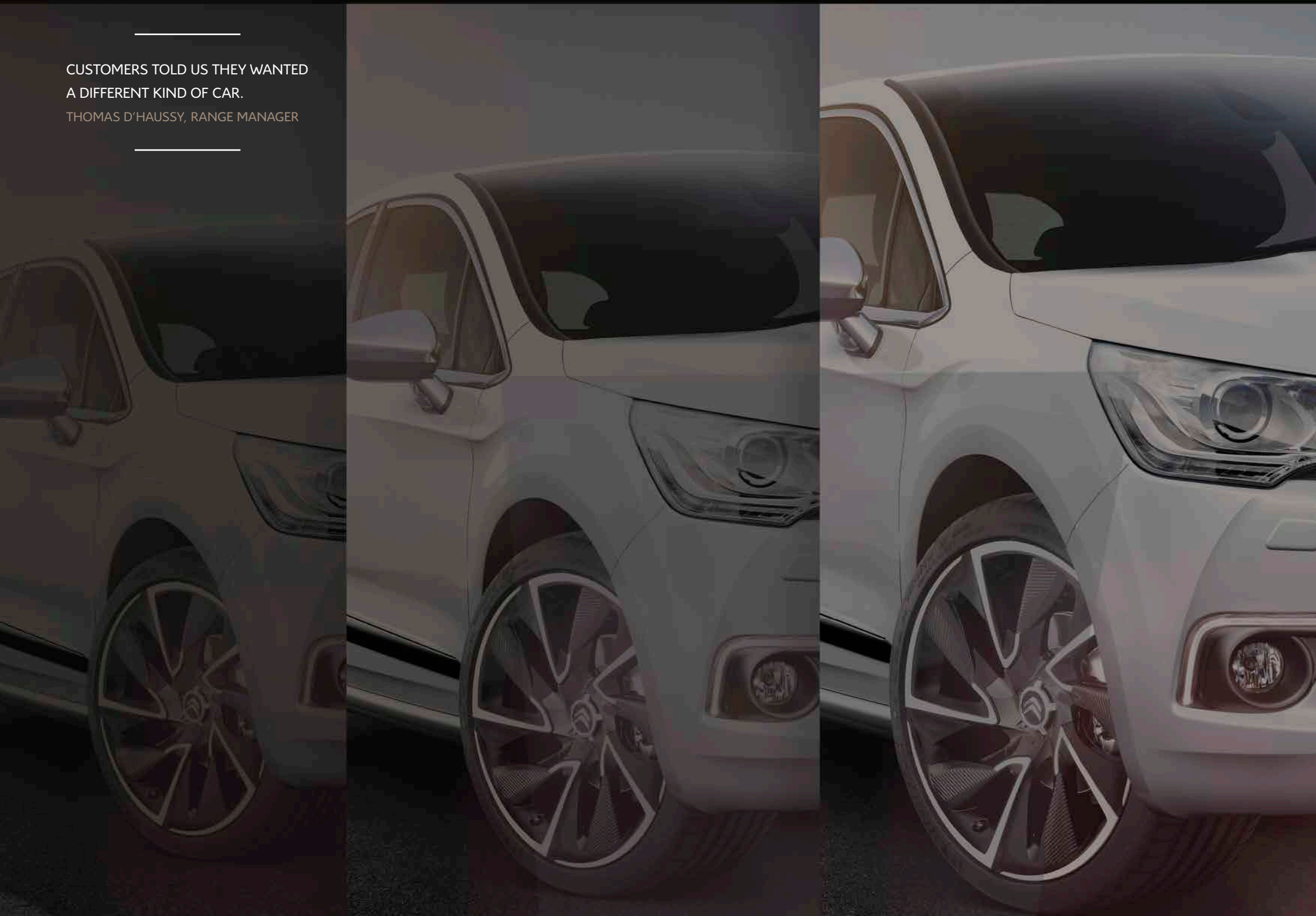
DS 4

---

CUSTOMERS TOLD US THEY WANTED  
A DIFFERENT KIND OF CAR.

THOMAS D'HAUSSY, RANGE MANAGER

---





DS AUTOMOBILES

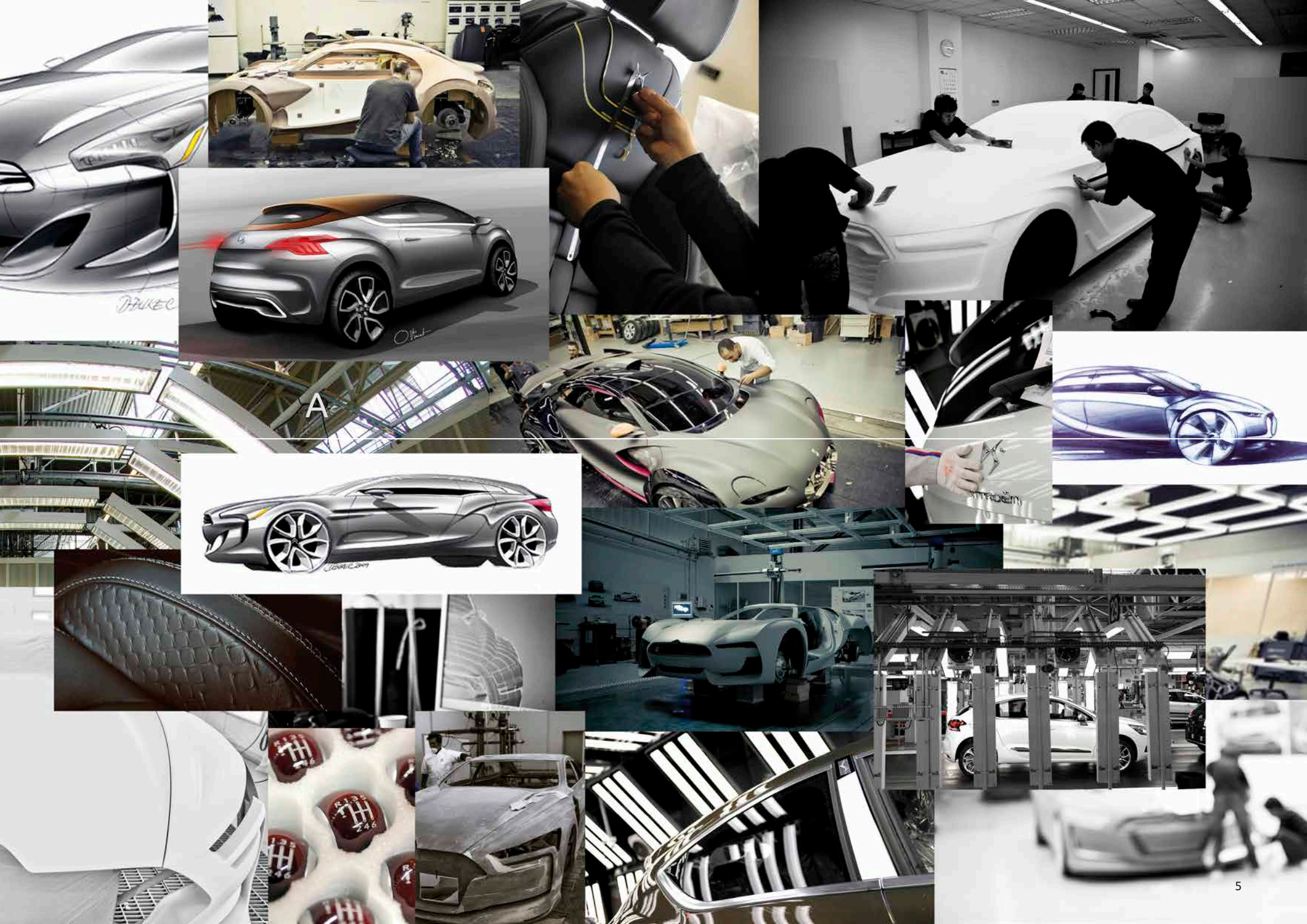
SPIRIT OF  
AVANT-GARDE

IT STARTED WITH A BLANK PAGE.

WITH A FEW PENCIL LINES ON THE PAPER,  
I KNEW IT WAS GOING TO BE A BEAUTIFUL CAR.

OLIVIER VINCENT  
DESIGNER







D E S I G N

A

---



OLIVIER VINCENT  
EXTERIOR DESIGNER

## UNIQUE




We really wanted to give it the look of an urban vehicle, able to tackle obstacles, but also agile.

The quarter lines are sharp and attractive.  
Flowing lines around the windscreen.

An expressive front and an expressive rear.  
The forms are pleasant to look and to touch.

We've really launched a unique vehicle. And on top of that it goes and wins Most Beautiful Car of the Year.





SEAN JOHNSON  
INTERIOR DESIGNER

## SPACE



It's not like a German car, it's not like an Italian car. It's unique. Typically French. It's like a coupé but still you've got all the space necessary for five occupants. Very spacious.

We've put a lot of attention into the detail and to the modelling to make it really feel quite sophisticated.

A great place to be. It's a car where you feel very involved. Cocooned. Very protected. It's a cockpit. It's a car that you really want to drive.

THOMAS LERET  
COLOURS AND MATERIALS STYLIST

# LUXURY



The aim with DS 4 was to make a luxury object. We took inspiration from leatherwork, from haute couture, jewellery and clock making.

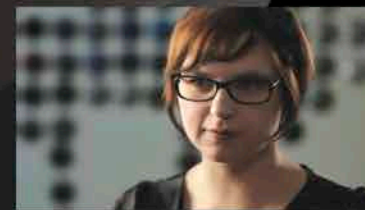
When you get inside, you really get a feeling of class, a sense of style. This car is a really unique object – you haven't seen anything like it before.

I think every designer deserves the chance to work on a project like DS 4.



MAGALIE HALEY  
COLOURS AND MATERIALS STYLIST

## HARMONY



The design is very precise. Almost chiselled and plays with the light. The light slides over it. And in the matt parts, it's absorbed. It's about finding the colour in complete harmony with the interior.

When I open the door of DS 4 the thing I'm most proud of is the refinement and luxury which is very present.

When I got out on the street I thought, 'Yep, this car is going to turn heads'. I think that was the idea, you know? I can really see myself driving it.

THOMAS D'HAUSSY  
RANGE MANAGER

## REFINEMENT



At project inception customers told us they wanted a different kind of car. The object has to be refined, each detail carefully worked.

We invented new mixes for the suspension. New approaches to springing and damping. The road is at your fingertips. You feel like you dominate the road. You feel like you're sitting high up, and protected by the body-hugging seats.

THIERRY METROZ  
DESIGN DIRECTOR


## POWER



It's true that DS 4 is different, not something you've seen before. When you get into DS 4 you get the real measure of all this refinement. I'm looking at the road, and I'm also looking into the door mirror just to see the side of the car.

You have the power of a coupé, exceptional body lines that make you want to take the wheel. And at the same time, we placed the emphasis on rear space, which is exceptional.





**INNOVATION ALWAYS COMES FIRST.**  
LIKE EVERY CAR IN THE DS LINEAGE,  
DS 4 STARTS WITH A SPARK OF INNOVATION.  
UNIQUELY NON CONFORMIST, IT MIXES  
URBAN PRESENCE WITH COUPÉ GRACE,  
LUXURIOUS QUALITY WITH SMART FLEXIBILITY.

SO WHILE DS 4 IS NOT AN SUV OR A HATCHBACK, IT DISTILLS WHAT'S BEST ABOUT ALL OF THESE GENRES AND CREATES SOMETHING GENUINELY FRESH. IT'S A STRIKING, SOPHISTICATED 5-DOOR COUPÉ THAT HAS THE BALANCE AND FINE-TUNED ENGINEERING TO INSPIRE KEEN DRIVERS WITH QUICK RESPONSES AND NIMBLE HANDLING. IT'S A LUXURIOUS WAY TO TRAVEL FOR FIVE AND IT'S A CREATIVE DESIGN STATEMENT. THIS IS WHAT HAPPENS WHEN YOU BEGIN WITH INNOVATION.

› **CONTENTS:** 14 INTRODUCTION 16 DEFYING DEFINITIONS 18 DRIVING EXPERIENCE 20 INTERIOR DESIGN  
22 TECHNOLOGY & INNOVATION 24 ENVIRONMENTAL 26 SAFETY 28 RANGE OVERVIEW 30 OPTIONS  
32 COLOUR, TRIM & WHEEL OPTIONS 34 EQUIPMENT SPECIFICATION 36 TECHNICAL SPECIFICATION  
37 ENVIRONMENTAL COMMITMENT 38 FINANCE, CARE & INSURANCE 39 GLOSSARY & DIMENSIONS

# DEFYING DEFINITIONS. DS 4 PROVES THAT THERE'S NO CONTRADICTION BETWEEN SPORTY AND PURPOSEFUL. THE ESTABLISHED DEFINITIONS SIMPLY DON'T COUNT.

WALK AROUND THE OUTSIDE AND YOU'LL FIND SWEEPING LINES, EXCITING DETAILS AND A PROFILE THAT IS BOTH COMPACT AND BOLD. STEP INSIDE AND YOU'LL DISCOVER A WELCOMING COMBINATION: STYLISH SPACE, LIGHT, INTUITIVE TECHNOLOGY AND HIGH QUALITY MATERIALS. NOW FIVE PEOPLE CAN TRAVEL COMFORTABLY IN COUPÉ STYLE, WHILE HIGH PROFILE ROAD PRESENCE AND SLEEK EFFICIENCY GO HAND IN HAND.

## › HANDLE WITH FLAIR

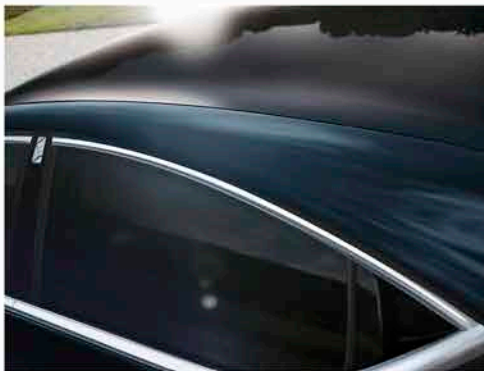
Rear door handles are smoothly integrated into the window surround, leaving the side profile's organic curves uninterrupted.

## › REAR REVELATION

The ultra-stylish, tough body-coloured rear bumper, beautifully formed lights, steeply raked tailgate and roof spoiler surround a luggage area of real versatility. Compromise is not included.

## › ACCESS ALL AREAS

DS 4 is a proper 5-door coupé. It just looks and drives like something far more stimulating...







# POWER AND POISE. BENEATH DS 4'S SCULPTED BONNET YOU CAN SPECIFY ONE OF EIGHT ADVANCED ENGINES. BUT A GREAT DRIVING CAR NEEDS MORE THAN POWER...

OUR ENGINEERS HAVE USED THEIR IMAGINATION AND EXPERIENCE TO CREATE A CAR THAT HANDLES, RIDES AND RESPONDS WITH BALANCE AND FLUIDITY. DYNAMICALLY, DS 4 OFFERS BOTH INSPIRATION AND SUREFOOTED SAFETY – IT'S A PERFECT PLATFORM FOR ADDING YOUR CHOSEN ENGINE. THERE ARE FOUR DIESELS, INCLUDING THE POWERFUL, FLEXIBLE BLUEHDi 180 AND THE SUPER-EFFICIENT e-HDi 115. SELECT PETROL AND THERE ARE FOUR ENGINES, FROM THE VTi 120 WITH INGENUOUS VARIABLE VALVE TIMING, TO THE THP 200 FOR ULTIMATE PERFORMANCE. AGILITY AND STABILITY, POWER AND EFFICIENCY... DS 4 LEAVES NOTHING OUT.



## > STAND OUT

Powerful fog lamps and stylish Daytime Running Lights ensure DS 4 stands out, even in the most treacherous driving conditions.

## > DRIVER FOCUSED

Cool, clear main instruments are right in the centre of your vision when you take the wheel, providing a perfect mix of analogue and digital information from the three chrome-rimmed dials.







# ADVANCED LUXURY. IN EVERY SENSE, DS 4'S INTERIOR IS A SPECIAL PLACE. NATURALLY LIGHT AND ROOMY, IT IS MADE WITH METICULOUS CARE, COMBINING CRAFTSMANSHIP WITH HIGH TECHNOLOGY.

BEGINNING WITH THE FUNDAMENTALS, THE WHOLE INTERIOR IS THOROUGHLY SOUNDPROOFED, USING CAREFULLY CHOSEN MATERIALS THAT ABSORB NOISE AND VIBRATION. THIS RESTFUL SPACE IS THEN SHAPED FOR FIVE PEOPLE, BRINGING THEM AN ENVIRONMENT THAT CAN BE FINE-TUNED IN NUMEROUS WAYS. BACKLIGHTING CAN BE CHANGED FROM WHITE TO BLUE, AUTOMATIC DIGITAL AIR CONDITIONING, STANDARD ON DSTYLE NAV AND DSPORT OR OPTIONAL ON DSIGN, HAS A SPECIAL 'REST' FUNCTION THAT MAINTAINS ITS TEMPERATURE SETTING FOR A FEW MINUTES AFTER THE ENGINE STOPS. FRONT SPORTS SEATS WITH LUMBAR ADJUSTMENT AND A MASSAGE FUNCTION ARE AVAILABLE FROM DSTYLE NAV UPWARDS AND SUMPTUOUS LEATHER TOUCHES CREATE AN ALL ENCOMPASSING FEEL OF REFINEMENT AND QUALITY.

› 2 + 3 + DS 4

Even with its flowing coupé profile, DS 4's interior presents beautifully shaped and trimmed seating for three in the back – it's one definition of advanced luxury.



# INNOVATION FOR LIFE. DS 4 IS PACKED WITH ADVANCED TECHNOLOGY AND NEW IDEAS, BUT NEVER JUST FOR THE SAKE OF IT. THEY ARE EACH CREATED TO ENTERTAIN, INSPIRE AND INFORM YOU AND YOUR PASSENGERS.



EMYWAY IS A GREAT EXAMPLE, STANDARD ON DSTYLE NAV AND OPTIONAL ON DSPORT. DISPLAYED ON A 7 INCH COLOUR TOUCHSCREEN, THIS IS YOUR ROUTE INTO THE LATEST GENERATION TECHNOLOGY, USING BIRDVIEW MODE AND EUROPEAN MAPS STORED ON INTERNAL MEMORY. IT ALSO ALLOWS EASY NAVIGATION OF YOUR MUSIC PLAYLISTS ON A 7 INCH SCREEN AND INTEGRATES WITH THE BLUETOOTH® HANDSFREE FOR YOUR MOBILE. TO PUT YOU IN THE MIDDLE OF THE MUSIC WHEREVER YOU GO, DS 4 USES A DIGITAL SOUND PROCESSOR TO CREATE LIFELIKE DEPTH AND SPACE. FOR THE ULTIMATE PERFORMANCE YOU CAN SELECT THE DENON HI-FI WITH BOOT MOUNTED SUBWOOFER, OPTIONAL ON DSTYLE NAV AND DSPORT.



## > FINISHING TOUCH

On DStyle Nav, a new 7 inch touch screen is integrated beautifully into the dashboard and provides access to new and improved satellite navigation software that will get you past any chosen finishing line with the greatest of ease.

## > TAILOR-MADE SOUND

The new Denon Hi-Fi system is dynamically optimised for DS 4. It features nine loudspeakers and a digital amplifier that create a powerful, natural and accurate sound in the DS 4's cabin in order to deliver the best, most consistent performance.

## > DIGITAL ON THE GO

Relax and immerse your senses in a whole new audio driving experience with the state-of-the-art digital radio. Enjoy many digital radio channels not available on FM, improved station selection and the outstanding digital reception, standard on DStyle Nav and DSPort, optional on DSign versions.

## > PLUG AND PLAY

The centre console discreetly sorts the connectivity, thanks to its USB and auxiliary sockets, standard on DStyle Nav and DSPort, optional on DSign versions.





RADIO

MUSIC

NAV

TRAFFIC

PHONE

SETUP



A/C

REST

AUTO



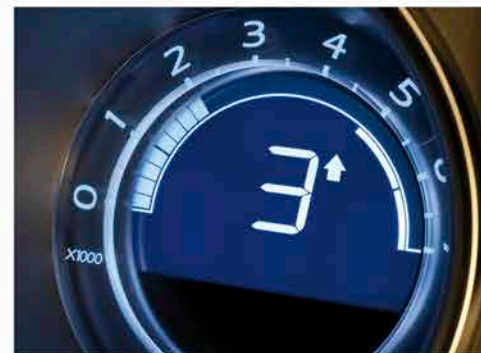


# GUILT-FREE PLEASURE. DRIVING PLEASURE AND ENVIRONMENTAL EFFICIENCY BLEND HAPPILY IN DS 4. IT'S THE BALANCE THAT MAKES IT SUCH AN INSPIRING CAR AND A GENUINE PIONEER.

THE EXTRAORDINARY MICRO-HYBRID TECHNOLOGY OF e-HDi REDUCES BOTH FUEL CONSUMPTION AND CO<sub>2</sub> EMISSIONS BY UP TO 15% AROUND TOWN, THANKS TO A COMBINATION OF EFFICIENT HDi ENGINEERING AND INGENUOUS ADVANCES. REGENERATIVE BRAKING RECOVERS ENERGY USED DURING DECELERATION AND SECOND GENERATION STOP & START CUTS THE ENGINE AS YOU ROLL TO A HALT. WHEN YOU RELEASE THE BRAKE PEDAL AND MOVE OFF, IT SEAMLESSLY RESTARTS, SO YOU CAN SAY GOODBYE TO POINTLESS IDLING IN TRAFFIC.

## › PERFECT SHIFT WORK

DS 4 incorporates a Gear Efficiency Indicator, on manual versions, which helps you to shift at just the right moment for optimum fuel consumption. The ideal gear ratio appears in the centre of the rev counter.





# SAFETY MOVES ON. PIONEERING PROTECTION IS ENGINEERED IN TO EVERY PART OF DS 4. IT'S WHERE CREATIVE DESIGN AND NEW TECHNOLOGY PLAY A VITAL ROLE.

OUT ON THE ROAD, WHEN YOU NEED TO CHANGE LANES, THE BLIND SPOT MONITORING SYSTEM, STANDARD ON DSPORT AND OPTIONAL ON DSTYLE NAV VERSIONS, IS LOOKING OUT FOR YOU. IT GIVES A VISIBLE WARNING IN YOUR DOOR MIRROR IF IT DETECTS A HIDDEN VEHICLE. CRUISE CONTROL AND A PROGRAMMABLE SPEED LIMITER MAINTAIN HASSLE-FREE AND SAFE PROGRESS. A PURE EXAMPLE OF DS INNOVATION ON YOUR SIDE IS ETOUCH WHICH BRINGS YOU KEY SERVICES BY HARNESSING TECHNOLOGY. ON DSPORT VERSIONS CITROËN ETOUCH EMERGENCY AND ASSISTANCE SYSTEM USES YOUR CAR'S GPS AND MAP INTEGRATED SIM TO IDENTIFY AND LOCATE YOU. IN THE EVENT OF AN INCIDENT AN OPERATOR WILL IMMEDIATELY SEND TECHNICAL SUPPORT OR HELP WHEREVER YOU NEED IT. THIS SERVICE IS FREE AND AVAILABLE 24 HOURS EVERY DAY.



## > GOODBYE TO BUMPS

For safe manoeuvres without bumps and scuffs, DS 4 has rear parking sensors, standard on DStyle Nav and DSport and optional on DSign versions. For further pinpoint accuracy, front parking sensors are standard on DSport and optional on DStyle Nav versions.



## > A HEAD START

DSport versions feature keyless access and start which recognises the driver on approach and a light touch opens the door. A push of the start button fires the engine.



## > SUREFOOTED EVERYWHERE

DS 4 has intelligent traction control that continuously monitors grip levels at each driven wheel. If it detects slip, it fine-tunes power delivery to ensure complete stability. Integrated with this system is an automatic electric parking brake, standard on DStyle Nav (excluding THP 160 6-speed automatic) and DSport versions. Also the Hill Start Assist, standard on all versions, holds you securely in place on steep inclines without rolling backwards.

**THREE ORIGINALS.** DS 4 NEATLY  
DRIVES AROUND PREDICTABLE  
CATEGORIES, BUT YOU WILL KNOW  
WHICH VERSION SUITS YOU BEST.

DSIGN, DSTYLE NAV AND DSPORT EACH COME WITH A HUGE ARRAY  
OF INTELLIGENT, ENTERTAINING AND LUXURIOUS FEATURES – THERE  
IS NO 'STANDARD' VERSION. IT'S MORE A MATTER OF EMPHASIS,  
STYLE AND PERSONALITY...



# DSIGN

## MAKE YOUR OWN RULES

FROM ITS FULL SPECTRUM OF SAFETY TECHNOLOGY TO THE 17 INCH 'CANBERRA' ALLOY WHEELS, SURROUND SOUND 6-SPEAKER STEREO AND LED DAYTIME RUNNING LIGHTS, THIS IS WHERE THE UNIQUE DS 4 STORY BEGINS.

### > DS 4 **DSIGN** SPECIFICATION INCLUDES:

- ABS with Electronic Brakeforce Distribution and Emergency Braking Assistance
- Electronic Stability Control with Intelligent Traction Control
- Driver, front passenger, front lateral and curtain airbags
- Hill Start Assist function
- Remote central locking with deadlocks
- Perimetric and volumetric alarm
- Daytime Running Lights (DRLs)
- Height-adjustable halogen headlights
- Front fog lights with cornering function
- Cruise control with speed limiter and memory settings
- Body colour door handles and door mirrors
- Body colour front and rear bumpers
- Electrically adjustable heated door mirrors
- Front electric windows
- Dark tinted rear windows
- 17 inch 'Canberra' alloy wheels
- Black 'Lacina' cloth
- Leather multi-functional steering wheel with chrome inserts
- Air conditioning
- RDS radio/CD with 6 speakers, surround sound and AUX socket

# DSTYLE NAV

## TURN HEADS, FREE MINDS

DS 4 **DSTYLE NAV** IS FULL OF EYE-CATCHING DESIGN DETAILS THANKS TO THE STRIKING CONTRAST PACKS BUT IT'S ALSO PACKED WITH FRESH IDEAS. FOR EXAMPLE A 7 INCH COLOUR TOUCHSCREEN WITH ACCESS TO LATEST IN SATELLITE NAVIGATION TECHNOLOGY.

### > DS 4 **DSTYLE NAV** SPECIFICATION IN ADDITION TO **DSIGN** INCLUDES:

- Automatic electric parking brake (excludes THP 160)
- 'Guide-me-home' headlight function
- Automatic lights and windscreen wipers
- Auto-dimming electrochrome rear view mirror
- 18 inch 'Brisbane' alloy wheels
- Electric folding door mirrors with kerb lighting
- Black 'Sao' cloth with black leather
- Footwell lighting
- Drawer under driver's seat
- Automatic dual zone air conditioning
- Rear parking sensors
- Electric lumbar adjustment and massage function
- 7 inch colour touchscreen
- DAB digital radio
- Bluetooth® handsfree and media streaming with USB socket

### > STANDARD EQUIPMENT SPECIFIC TO DS 4 **DSTYLE NAV** ONLY:

- Satellite navigation, live traffic info and European mapping
- **Contrast Pack** – contrasting coloured roof, door mirrors and wheel centre caps.

# DSPORT

## THE ULTIMATE EXPRESSION

SETTLE INTO THE BLACK LEATHER INTERIOR AND START UP THE MOST COMPLETE EXPRESSION OF DS 4. THIS IS WHERE INNOVATION, REFINEMENT, STYLE AND VERSATILITY CREATE A CLASS OF ONE.

### > DS 4 **DSPORT** SPECIFICATION IN ADDITION TO **DSTYLE NAV** INCLUDES:

- Citroën eTouch Emergency & Assistance system
- Upgraded sports suspension and brakes with 340mm front discs
- 19 inch 'Cairns' alloy wheels
- Keyless entry and start
- Body colour or black side rubbing strips with chrome insert
- Black leather upholstery
- Front heated sports seats
- Aluminium pedals
- Front parking sensors
- Blind spot monitoring system

	DSign	DStyle Nav	DSport
<b>PETROL ENGINE AVAILABILITY</b>			
VTi 120 manual	•	•	
PureTech 130 S&S 6-speed manual		•	
THP 160 6-speed automatic		•	
THP 200 6-speed manual			•
<b>DIESEL ENGINE AVAILABILITY</b>			
e-HDi 115 6-speed manual	•	•	
BlueHDi 120 S&S 6-speed manual		•	
e-HDi 115 ETG6		•	
BlueHDi 150 S&S 6-speed manual		•	•
BlueHDi 180 S&S EAT6 auto		•	•

# YOUR DEFINITION OF DS 4.

DS 4 BRINGS OUT THE INDIVIDUAL AND THE NON CONFORMIST, SO THE RANGE OF OPTIONS IS INSPIRING AND DIVERSE.

FROM ESSENTIAL TECHNOLOGY TO SENSUAL LUXURY, YOUR OPTIONS ARE WIDE OPEN. EXPLORE THE FULL LIST TO SEE WHAT YOU CAN ADD TO YOUR CHOSEN MODEL.

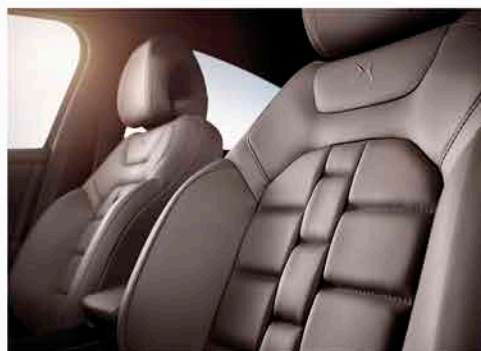
## ➤ PREMIUM SOUND

The new Denon Hi-Fi system is dynamically optimised for DS 4. It features nine loudspeakers and a digital amplifier that create a powerful, natural and accurate sound in the DS 4's cabin in order to deliver the best, most consistent performance. The configuration and simplicity of the system require minimal interaction from the driver, allowing you to just sit back and enjoy.



## ➤ CRIOLLO LEATHER

The tradition of fine luxury is alive and well in this most advanced interior. Criollo semi-aniline leather touches provide an all-encompassing sense of quality and comfort.



	DSign	DStyle Nav	DSport
<b>OPTION SUMMARY</b>			
<b>PAINT</b>			
Flat paint (Polar White)	◇	◇	◇
Metallic paint (Perla Nera Black, Platinum Grey, Arctic Steel, Hickory Brown, Bourrasque Blue, Whisper Purple)	○	○	○
Pearlescent paint (Babylon Red, Pearl White)	○	○	○
<b>EXTERIOR STYLE</b>			
<b>Contrast Pack</b> – contrasting painted roof, door mirrors and wheel centre caps		◇	○ <sup>1</sup>
<b>Faubourg Pack</b> – DS monogrammed roof graphic, black DS laseretched door mirrors, 19 inch Ambrain Grey 'Cairns' alloy wheels with Scala Red centre caps			○ <sup>2</sup>
Body colour side rubbing strips with chrome insert (available in Perla Nera Black, Hickory Brown, Bourrasque Blue, Platinum Grey, Whisper Purple and Pearl White only)		○	○
Perla Nera Black side rubbing strips with chrome insert (available with Polar White, Pearl White, Arctic Steel, Platinum Grey and Babylon Red body colours only)		○	
<b>INTERIOR STYLE</b>			
<b>Cloth and Leather Pack</b> – black 'Sao' cloth with black leather, front sport seats, electric lumbar adjustment and massage function, rear armrest with ski flap	○		
<b>Black leather upholstery</b> – heated front sport seats, electric lumbar adjustment and massage function, rear armrest with ski flap	○	○ <sup>3</sup>	
<b>Black and Red Leather Pack</b> – heated front sport seats, electric lumbar adjustment and massage function, rear armrest with ski flap, brushed aluminium effect door sill protectors with red serigraphy, red door armrests, red-detailed centre console, red leather gear selector/gear knob		○ <sup>4</sup>	○ <sup>4/5</sup>
<b>Black and White Leather Pack</b> – heated front sport seats, electric lumbar adjustment and massage function, rear armrest with ski flap, brushed aluminium effect door sill protectors with white serigraphy, white door armrests, white-detailed centre console, black leather gear selector/gear knob		○ <sup>6</sup>	○ <sup>6</sup>
<b>Habana Semi-Aniline Leather Pack with DS embossing</b> – heated front sport seats with DS embossing, electric lumbar adjustment and massage function, rear armrest with ski flap, watchstrap detailing on front and rear seats, Habana leather front armrest, black leather gear selector/gear knob		○ <sup>7</sup>	○ <sup>7</sup>
<b>Criollo Semi-Aniline Leather Pack with DS embossing</b> – heated front sport seats with DS embossing, electric lumbar adjustment and massage function, rear armrest with ski flap, watchstrap detailing on front and rear seats, Criollo leather front armrest, black leather gear selector/gear knob		○ <sup>8</sup>	○ <sup>8</sup>
<b>COMFORT &amp; CONVENIENCE</b>			
Full size 16 inch steel spare wheel	○		
Space saver spare wheel		○	
<b>OTHER OPTIONS</b>			
<b>Denon Hi-Fi System</b> – digital amplifier, 4 woofers, 4 tweeters and boot mounted subwoofer		○	○
<b>eMyWay satellite navigation</b> – 7 inch colour touchscreen, satellite navigation, live traffic info and European mapping	○		○
<b>Automatic Signature</b> – automatic lights and windscreen wipers, auto-dimming electrochrome rear view mirror and automatic dual zone air conditioning	○		
<b>City Signature</b> – rear parking sensors, electric folding heated door mirrors with kerb lighting, rear bumper chrome insert, 12 volt socket in boot and rechargeable torch	○		
<b>Security Signature</b> – blind spot monitoring system, front parking sensors and reverse-tilting door mirrors		○	
<b>Security Xenon Signature</b> – Xenon dual-function directional headlights with washer jets, blind spot monitoring, front parking sensors and reverse-tilting door mirrors		○	
Xenon dual-function directional headlights with washer jets			○

◇ No cost option

○ Optional factory fitted equipment

<sup>1</sup> Contrasting wheel centre caps not available on DSport.

<sup>2</sup> Available in Perla Nera Black, Pearl White and Whisper Purple.

<sup>3</sup> Front sports seats with electric lumbar adjustment and massage function and rear armrest with ski flap is standard on DStyle Nav versions.

<sup>4</sup> Available with Perla Nera Black, Platinum Grey or Babylon Red.

<sup>5</sup> Heated front seats standard on DSport versions.

<sup>6</sup> Not available with Hickory Brown or Babylon Red.

<sup>7</sup> Not available with Babylon Red.

<sup>8</sup> Not available with Hickory Brown.

**MAKE A STATEMENT.** THE CONTRAST PACK GIVES YOU THE OPPORTUNITY TO MAKE DS 4 YOUR OWN. IT'S THE PERFECT WAY TO ADD SOME COLOUR TO YOUR LIFE.

A NO COST OPTION ON DSTYLE NAV AND OPTIONAL ON DSPORT VERSIONS, AND AVAILABLE IN FOUR SUMPTUOUS SHADES, THE CONTRAST PACK HELPS YOU CREATE YOUR IDEAL DS 4.



CONTRAST PACK COLOURS



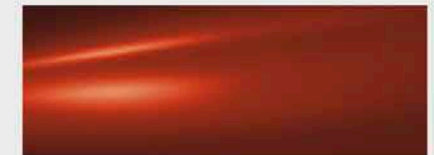
Perla Nera Black (M)



Whisper Purple (M)



Virtual Blue (M)



Tourmaline Orange (M)

BODY COLOUR	PERLA NERA BLACK	WHISPER PURPLE	VIRTUAL BLUE	TOURMALINE ORANGE
Polar White	•	•	•	•
Perla Nera Black		•	•	•
Platinum Grey	•	•	•	•
Arctic Steel	•	•	•	•
Hickory Brown	•			
Bourrasque Blue	•			
Whisper Purple	•			
Babylon Red	•			
Pearl White	•	•	•	•

# ART OF THE PERSONAL. NINE BODY COLOURS FROM COOL AND SUBTLE TO BRIGHT AND VIBRANT, STUNNING INTERIOR MATERIALS AND THREE BOLDLY SCULPTED ALLOY WHEEL DESIGNS... THESE ARE THE ELEMENTS TO GUIDE YOUR INDIVIDUAL TASTE.

## BODY COLOURS



- (P) Pearlescent      ● Standard equipment      1 BlueHDi 150 S&S and BlueHDi 180 S&S versions only.  
 (M) Metallic      ○ Optional factory fitted equipment      2 Coloured centre caps are excluded on this wheel when optional Contrast Pack is ordered.

Please note: Colours and pictures shown are for illustration purposes only. Please consult your Dealer for definitive colour and trim/upholstery details.

17 INCH 'CANBERRA' ALLOY WHEELS Tyres: 215/55 R17			18 INCH 'BRISBANE' ALLOY WHEELS Tyres: 225/45 R18		
DSign	DStyle Nav	DSport	DSign	DStyle Nav	DSport
●				●	



19 INCH 'CAIRNS' ALLOY WHEELS Tyres: 225/40 R19		
DSign	DStyle Nav	DSport
	○ <sup>1/2</sup>	● <sup>2</sup>





TRIMS



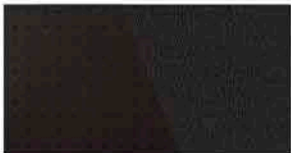
Standard on DSign versions

Black 'Lacina' cloth



Standard on DStyle Nav,  
optional on DSign versions

Black 'Sao' cloth  
with black leather



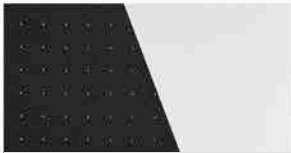
Standard on DSport,  
optional on DSign & DStyle Nav versions

Black leather



Optional on DStyle Nav  
& DSport versions

Black and Red  
Leather Pack<sup>1</sup>



Optional on DStyle Nav  
& DSport versions

Black and White  
Leather Pack<sup>2</sup>



Optional on DStyle Nav  
& DSport versions

Habana Semi-aniline Leather Pack  
with DS embossing<sup>3</sup>



Optional on DStyle Nav  
& DSport versions

Criollo Semi-aniline Leather Pack  
with DS embossing<sup>4</sup>

<sup>1</sup> Available with Perla Nera Black, Platinum Grey or Babylon Red.

<sup>2</sup> Available with Polar White, Perla Nera Black, Platinum Grey, Arctic Steel, Bourrasque Blue, Whisper Purple or Pearl White.

<sup>3</sup> Not available with Babylon Red.

<sup>4</sup> Not available with Hickory Brown.



# EQUIPMENT SPECIFICATION

● Standard equipment

○ Optional factory fitted equipment

1 Applies to THP 160 automatic version only.

2 Excludes THP 160 automatic version.

3 Applicable to diesel versions only.

4 Available as part of optional Automatic Pack.

5 Available as part of optional City Signature.

6 Applicable to manual versions only.

7 Applies to S&S and e-HDi versions only.

8 Perla Nera Black, Hickory Brown, Bourrasque Blue, Platinum Grey and Whisper Purple body colours.

9 Polar White, Pearl White, Arctic Steel and Babylon Red body colours.

10 Not present when satellite navigation is fitted.

11 Automatic versions only.

12 Excludes BlueHDi 180 version.

13 Applies to e-HDi 115 ETG6 & BlueHDi 180 S&S EAT6 versions only.

14 BlueHDi 180 S&S EAT6 version only.

15 Available when optional full leather seats are ordered.

16 Includes front parking sensors.

17 Available when optional blind spot monitoring system or Security Xenon Signature is ordered.

18 Available when optional eMyWay is ordered.

	DSign	DStyle Nav	DSport
<b>SAFETY &amp; SECURITY</b>			
ABS with Electronic Brakeforce Distribution and Emergency Braking Assistance	●	●	●
Electronic Stability Control with Intelligent Traction Control	●	●	●
Hill Start Assist	●	●	●
Driver, front passenger, front lateral and curtain airbags	●	●	●
Five three-point seat belts	●	●	●
Height-adjustable front seat belts with pre-tensioners and force limiters	●	●	●
Seat belt force-limiter on two outer rear seats	●	●	●
Two rear ISOFIX mounting points	●	●	●
Unfastened seat belt warning for all seats	●	●	●
Remote central locking	●	●	●
Child lock indicator	●	●	●
Perimetric and volumetric alarm	●	●	●
Transponder immobiliser	●	●	●
Automatic re-locking	●	●	●
Automatic door locking	●	●	●
Automatic activation of hazard warning lights	●	●	●
Manual parking brake	●	● <sup>1</sup>	●
Automatic electric parking brake		● <sup>2</sup>	●
Citroën eTouch Emergency & Assistance system		●	●
Twotone horn	●	●	●
Anti-misfuelling device	● <sup>3</sup>	● <sup>3</sup>	● <sup>3</sup>
Up-rated suspension			●
<b>LIGHTING &amp; VISIBILITY</b>			
Daytime Running Lights (DRLs)	●	●	●
Height adjustable halogen headlights	●	●	●
'Guide-me-home' headlight function	○ <sup>4</sup>	●	●
Front fog lights and cornering light function	●	●	●
Electrically adjustable, heated door mirrors	●	●	●
Electrically folding door mirrors with kerb lighting	○ <sup>5</sup>	●	●
Speed-dependent front and rear windscreen wipers	●	●	●
Automatic lights and windscreen wipers	○ <sup>4</sup>	●	●
Auto-dimming electrochromic rear view mirror	○ <sup>4</sup>	●	●
Automatic rear wiper (when reverse gear is engaged)	●	●	●
Front and rear courtesy and reading lights	●	●	●
Footwell lighting		●	●
Interior mood lighting			●
Panoramic windscreen with independent sliding sunblinds	●	●	●

	DSign	DStyle Nav	DSport
<b>DRIVER INFORMATION</b>			
Gear Efficiency Indicator	●	● <sup>6</sup>	● <sup>6</sup>
Trip computer	●	●	●
Tyre pressure sensors	●	●	●
Service indicator	●	●	●
Exterior temperature display with ice alert	●	●	●
Electronic fuel filler flap release	●	●	●
'Black panel' on/off instrument lighting	●	●	●
Customisable colour instrument panel	●	●	●
Stop & Start		● <sup>7</sup>	
<b>STYLE</b>			
<b>EXTERIOR</b>			
Chrome front lower grille surround		●	●
Chrome insert on rear bumper	○ <sup>5</sup>	●	●
Body colour door handles and door mirrors	●	●	●
Body colour rear spoiler	●	●	●
Chrome window trims	●	●	●
Dark tinted rear windows	●	●	●
Body colour side rubbing strips with chrome insert		○ <sup>8</sup>	● <sup>8</sup>
Perla Nera side rubbing strips with chrome insert		○ <sup>9</sup>	● <sup>9</sup>
Invisible aerial			● <sup>10</sup>
<b>INTERIOR</b>			
Leather steering wheel with satin chrome inserts	●	●	●
Leather gear knob	●	● <sup>6</sup>	● <sup>6</sup>
Leather gear surround	●	● <sup>6</sup>	● <sup>6</sup>
Gear Selector with leather cover		● <sup>11</sup>	● <sup>11</sup>
Leather parking brake grip	●	● <sup>1</sup>	
Frosted aluminium paint front door arches	●		
Matt black front door arches		●	
Woven-pattern front door arches			● <sup>12</sup>
Brushed aluminium effect front door sill protectors		● <sup>10</sup>	● <sup>10</sup>
Aluminium pedals			●
<b>STORAGE</b>			
Drawer under front passenger seat	●	●	●
Drawer under driver's seat		●	●
Front seat back pockets		●	●
Cup holder	●	●	●
Illuminated and air conditioned glove box	●	●	●
Large, air conditioned storage compartment between front seats		● <sup>13</sup>	● <sup>14</sup>
Rechargeable boot light/torch	○ <sup>5</sup>	●	●
Rear central armrest with ski flap	○ <sup>15</sup>	●	●
12 volt socket in cabin		● <sup>6</sup>	● <sup>6</sup>
12 volt socket in boot	○	●	●

	DSign	DStyle Nav	DSport
<b>COMFORT &amp; CONVENIENCE</b>			
Power steering	•	•	•
Height and reach adjustable steering wheel	•	•	•
Cruise control with programmable speed limiter	•	•	•
Mobile ashtray and cigar lighter	•	•	•
Air conditioning	•	•	•
Automatic dual zone air conditioning	o <sup>4</sup>	•	•
Keyless entry and start	•	•	•
Front electric windows	•	•	•
Compressor with puncture repair kit	•	•	•
Rear parking sensors	o <sup>5</sup>	•	•
Blind spot monitoring system		o <sup>16</sup>	•
Front parking sensors		o <sup>17</sup>	•

	DSign	DStyle Nav	DSport
<b>SEATING</b>			
Height-adjustable front seats	•	•	•
Front sports seats	o <sup>15</sup>	•	•
Electric lumbar adjustment and massage function	o <sup>15</sup>	•	•
Heated front seats	o <sup>15</sup>	o <sup>15</sup>	•
Three retractable rear head restraints	•	•	•
Rear split/folding seats	•	•	•
<b>IN-CAR ENTERTAINMENT</b>			
RDS radio/ MP3 CD with 6 speakers and AUX socket	•	•	•
DAB digital radio	o <sup>18</sup>	•	•
Bluetooth® handsfree and media streaming with USB socket		•	•
7 inch colour touchscreen	o <sup>18</sup>	•	•
eMyWay satellite navigation – satellite navigation, live traffic info and European mapping displayed on 7 inch colour touchscreen	o	•	o
Steering wheel controls	•	•	•



# TECHNICAL SPECIFICATION



72.4mpg  
on BlueHDi 120 S&S  
6-speed manual versions



103g/km CO<sub>2</sub>  
on BlueHDi 120 S&S  
6-speed manual versions

	PETROL ENGINES				DIESEL ENGINES				
	VTi 120 manual	PureTech 130 S&S 6-speed manual	THP 160 6-speed automatic	THP 200 6-speed manual	e-HDi 115 6-speed manual	e-HDi 115 ETG6	BlueHDi 120 S&S 6-speed manual	BlueHDi 150 S&S 6-speed manual	BlueHDi 180 S&S EAT6 automatic
<b>ENGINE</b>									
Capacity (cc)	1598	1199	1598	1598	1560	1560	1560	1997	1997
Cylinders	4 in line	4 in line	4 in line	4 in line	4 in line	4 in line	4 in line	4 in line	4 in line
Bore and stroke (mm)	77.0 x 85.8	75.0 x 90.5	77.0 x 85.8	77.0 x 85.8	75.0 x 88.3	75.0 x 88.3	75.0 x 88.3	85.0 x 88.0	85.0 x 88.0
Max power CEE (kW/rpm)	88/6000	96/5500	120/6000	147/5800	84/3600	84/3600	88/3500	110/4000	133/3750
Max torque CEE (Nm/rpm)	160/4250	230/1750	240/1400	275/1700	270/1750	270/1750	300/1750	370/2000	400/2000
Fuel system	Multi-point fuel injection	Direct injection turbocharged	Multi-point fuel injection turbocharged	Multi-point fuel injection turbocharged	Direct Diesel injection turbocharged	Direct Diesel injection turbocharged	Direct Diesel injection turbocharged	Direct Diesel injection turbocharged	Direct Diesel injection turbocharged
Euro status	Euro 5	Euro 6	Euro 5	Euro 5	Euro 5	Euro 5	Euro 6	Euro 6	Euro 6
<b>TRANSMISSION</b>	Five speed manual	Six speed manual	Six speed automatic	Six speed manual	Six speed manual	Efficient Tronic Gearbox (ETG)	Six speed manual	Six speed manual	Six speed automatic
(All figures driver alone) <b>PERFORMANCE</b>									
Max speed (mph)	120	123	132	146	118	118	117	128	134
0-62mph (secs)	12.2	10.1	9.3	8.5	12.4	12.4	11.2	8.8	8.6
Standing 1000m (secs)	33.4	31.5	30.4	28.9	33.7	33.7	32.7	29.9	29.6
<b>ECONOMY Litres/100km (mpg)</b> (Official Government test fuel consumption figures)									
Urban cycle	8.3 (34.0)	6.4 (44.1)	10.6 (26.6)	8.4 (33.6)	5.1 (55.4)	4.8 (58.9)	4.5 (62.8)	4.4 (46.3)	5.3 (53.3)
Extra urban	5.0 (56.5)	4.5 (62.8)	6.0 (47.1)	5.2 (54.3)	3.9 (72.4)	4.1 (68.9)	3.6 (78.5)	3.6 (67.3)	3.9 (72.4)
Combined	6.2 (45.6)	5.2 (54.3)	7.7 (36.7)	6.4 (44.1)	4.3 (65.7)	4.4 (64.2)	3.9 (72.4)	3.9 (57.6)	4.4 (64.2)
<b>CO<sub>2</sub> EMISSIONS (g/km)</b>	144	120	178	149	113	114	103	103	115
<b>WEIGHTS (kg)</b> Please note: the maximum plated weights must not be exceeded									
Mass in service	1360	1395	1466	1431	1450	1428	1465	1540	1575
Max laden weight	1755	1790	1835	1820	1810	1815	1860	1935	1975
Gross train weight	2955	2990	2635	2820	3110	3115	3160	3235	3275
Max towing weight braked	1450	1450	1000	1250	1550	1550	1550	1550	1550
Max towing weight unbraked	640	675	715	695	680	680	680	745	745
Max tow hitch download	75	75	75	75	75	75	75	75	75
<b>BRAKES</b>	Front ventilated discs, rear discs.				Front ventilated discs, rear discs.				
<b>STEERING</b>	Variable power assisted steering				Variable power assisted steering				
Turning circle between kerbs (m)	10.7				10.7				
Number of turns lock to lock	2.75				2.75				
<b>SUSPENSION</b>	Front: MacPherson struts with lower wishbones; coil springs; hydraulic dampers and anti-roll bar Rear: Independent trailing arm with deformable transverse beam; coil springs; hydraulic dampers and anti-roll bar				Front: MacPherson struts with lower wishbones; coil springs; hydraulic dampers and anti-roll bar Rear: Independent trailing arm with deformable transverse beam; coil springs; hydraulic dampers and anti-roll bar				
<b>FUEL TANK CAPACITY Litres (gallons)</b>	60 (13.2)				60 (13.2)				
<b>EXTERIOR DIMENSIONS (mm)</b>	4275/1810/1523/2612				4275/1810/1523/2612				
<b>BOOT VOLUMES &amp; DIMENSIONS</b>	359/385				359/385				
Seats up – below parcel shelf min/max (litres VDA)	1021				1021				
Seats down – up to roof (litres VDA)	598				598				
Depth under parcel shelf (mm)									

MPG figures are achieved under official EU test conditions, intended as a guide for comparative purposes only, and may not reflect actual on-the-road driving conditions.

# EFFICIENCY MINUS COMPROMISE. CITROËN HAS CREATED FUELEFFICIENT VEHICLES WITHOUT SACRIFICING DRIVER ENJOYMENT FOR SOME TIME. THE LATEST ADVANCES TAKE THIS FINE BALANCE FURTHER STILL...

WITH THE PROVEN CREDENTIALS AND ENVIRONMENTAL PERFORMANCE OF CITROËN HDi DIRECT INJECTION ENGINES AS INSPIRATION, e-HDi AND BlueHDi ADD NEW TECHNOLOGY, SUCH AS A SMOOTH, SIMPLE STOP & START SYSTEM AND ETG6 GEARBOX. STOP & START PUTS THE ENGINE INTO IDLE MODE AS YOU DECELERATE AND STOPS ALTOGETHER AS YOU COME TO A HALT. THE MOMENT YOU TAKE YOUR FOOT OFF THE BRAKE, IT RESTARTS SILENTLY AND WITHOUT VIBRATION. THE RESULTS ARE A DRAMATIC REDUCTION IN BOTH FUEL CONSUMPTION AND CO<sub>2</sub> EMISSIONS, COMBINED WITH RESPONSIVE PERFORMANCE WHEREVER YOU GO.

We've also been equipping more of our vehicles with more environmentally friendly breakthroughs, such as our Efficient Tronic Gearbox (ETG6), which boasts impressively greener credentials, with less pollution and up to 5% more economy than a conventional manual gearbox system. In addition, Citroën has expanded the use of the exceptionally efficient, self-regenerating Diesel Particulate Filter System in our models. Cleaner, greener driving without taking away from the drive – that's what you can continue to expect from Citroën.



## › SETTING NEW STANDARDS

Demonstrating Citroën's commitment to Créative Technologie, the BlueHDi 150 engine is Citroën's first SCR (Selective Catalytic Reduction) equipped BlueHDi engine. This is the most efficient DeNOx system on the market, eliminating up to 90% NOx. This system also cuts CO<sub>2</sub> emissions between 2% to 4% compared to Euro 5 engines. This range topping, Euro 6 compliant power plant offers strong performance of 148bhp and produces just 110g/km CO<sub>2</sub>.

## › ELECTRIFYING. HOWEVER YOU LOOK AT IT

Forget what you know about electric cars. Citroën Survolt concept combines undiluted glamour with advanced sporting dynamics, then adds a 100% electric drivetrain. Outside, LED lights, voluptuous curves, two-tone charcoal and fuchsia paintwork, and a race-inspired rear spoiler meet your gaze. Inside, a stunning blend of curved chrome, swooping glass, high technology and organic forms welcomes you to an entirely new place. But this is no simple styling exercise. At heart, Survolt is even more radical, because although it is designed to thrill, it is powered purely by silent, efficient, clean electricity.



# DRIVE YOUR WAY. GET BEHIND THE WHEEL OF YOUR NEW DS 4, WITH CITROËN'S RANGE OF FINANCE AND INSURANCE PRODUCTS.

## CITROËN FINANCIAL SERVICES

### PURCHASE PLAN

Own your vehicle with this flexible package designed to fit your budget.

### ELECT 3

A new Citroën car every two or three years with monthly payments structured to suit your budget.

### ELECT 4

Enjoy the convenience of a new car without the stress and hassle of ownership.

TO FIND OUT MORE ABOUT CITROËN PRODUCTS AND SERVICES, GO TO [WWW.CITROEN.CO.UK](http://WWW.CITROEN.CO.UK) OR CONTACT YOUR CITROËN DEALER.

FOR BUSINESS USERS

## CITROËN CONTRACT MOTORING

### HIRE PURCHASE

A tried and tested finance package that allows you to own your vehicle.

### BUSINESS LEASE

An alternative to vehicle ownership that allows you to control your business cash flow and gain tax efficiencies.

### LEASE PURCHASE

Own a vehicle with a finance solution that offers ultimate flexibility to complement your business cash flow.

### CONTRACT HIRE

A non-ownership finance solution that keeps costs fixed and risks low.

FOR MORE INFORMATION ON CITROËN FLEET AND BUSINESS SALES, PLEASE CALL CITROËN FLEET CONNECT ON 08457 940 940 OR LOOK US UP AT [WWW.CITROEN.CO.UK/FLEET](http://WWW.CITROEN.CO.UK/FLEET)

## CITROËN INSURANCE

### INSTANT COVER

To help you drive away your new car without delay, we offer Instant Cover insurance, providing you with 7 days comprehensive car insurance, for free!

### MOTOR INSURANCE

Citroën Insurance has been designed specifically for our vehicles. You don't just get repairs you get Citroën expertise, service, quality and parts. So, when the time comes to renew your insurance cover, call Citroën Insurance on 0870 024 2725.

Lines open 8am - 8pm weekdays, 9am - 5pm Saturdays. Max call charge from a BT landline is 8p per minute. Calls from other networks may vary. Alternatively, visit [www.citroen.co.uk](http://www.citroen.co.uk) for more information or to apply online.

Citroën Insurance is underwritten by U K Insurance Limited which is authorised and regulated by the Financial Conduct Authority. Citroën Insurance is a trading style of Banque PSA Finance UK of Quadrant House, Princess Way, Redhill, Surrey, RH1 1QA.

# ESSENTIAL CARE. CITROËNS ARE RENOWNED FOR THEIR RELIABILITY – AND DS 4 IS NO EXCEPTION.

WITH THE ADDED REASSURANCE OF A WARRANTY, ROUTINE SERVICING AND MAINTENANCE, AS WELL AS 24-HOUR ROADSIDE ASSISTANCE, YOU ARE PROTECTED.

## CITROËN WARRANTY

Every new Citroën car has the benefit of a 3 year\* warranty package, plus a 12 year anti-perforation\*\* warranty and a 3 year paint warranty.

\* 2 years' unlimited warranty. No-fee customer option of 1 year's Dealer provided warranty, only on cars sourced from Citroën UK Limited. Note: Dealer provided warranty is limited to 60,000 miles for cars.

\*\* Against all internal to external perforation to bodywork or underbody.

## CITROËN ASSISTANCE

In response to a free telephone call in the UK, Citroën Assistance brings rapid expert roadside assistance to you in an emergency. It comes free of charge for a full year and operates 24 hours a day in all parts of the UK and Europe. Services include nationwide recovery for both car and passengers, a home call service, replacement vehicle, hotel accommodation and vehicle storage if required. Please note, Citroën Assistance only applies to incidents covered by the new vehicle warranty, and excludes non-vehicle faults, such as running out of fuel, mis-fuelling, loss of keys, lock-ins, road traffic accidents and punctures/wheel changes.

Full details are available on request from Citroën UK via [cuk\\_contactcentre@citroen.com](mailto:cuk_contactcentre@citroen.com)

## CITROËN MAINTENANCE

From roadside assistance to replacing wear and tear parts or regular servicing, with Citroën Maintenance you have total peace of mind. For a one-off fee or low monthly payment, our experienced engineers will take care of your Citroën, whatever happens.

To find out more, contact your Citroën Dealer or Citroën Authorised Repairer.

## CITROËN SERVICING

Available up to 1 year from your vehicle's registration date, but before its first chargeable service, a Citroën Servicing Package enables you to pay in advance for your vehicle's servicing needs for 3 years/35,000 miles.

For further information, please contact your Citroën Dealer.

# GLOSSARY

## > BlueHDi DIESEL ENGINE

BlueHDi engines are SCR (Selective Catalytic Reduction) equipped BlueHDi engine. This is the most efficient DeNOx system on the market, eliminating up to 90% NOx. This system also cuts CO<sub>2</sub> emissions between 2% to 4% compared to Euro 5 engines. These range topping, Euro 6 compliant power plants offer strong performance and produces as little as 103g/km CO<sub>2</sub>.

## > HIGH-PRESSURE DIRECT INJECTION DIESEL ENGINE

Citroën's HDi diesel engines operate with the fuel under extremely high pressure, enabling microscopically precise injection control. With this level of management it's possible to inject at different times during the same engine stroke allowing total control over the combustion process. This has allowed our engineers to reduce carbon monoxide emissions by 40%, unburned hydrocarbons by 50% and engine particulates by 60%. Fuel consumption is 20% lower than a prechamber diesel engine, resulting in an equivalent reduction in CO<sub>2</sub> emissions.

## > PETROL ENGINES

Part of Citroën's range of state-of-the-art engines, VTi and THP petrol powertrains are friction optimised and benefit from an inlet camshaft variable valve timing system that constantly measures the pressure on the accelerator and precisely regulates the quantity of air entering the cylinders. VTi engines boast advanced variable inlet valve lift and exhaust camshaft variable valve timing systems whilst THP engines are turbocharged. This guarantees outstanding efficiency and allows for immediate response with plenty of low range torque available.

## > CITROËN ETOUCH EMERGENCY AND ASSISTANCE SYSTEM

In the event of an accident or sudden health problem, one push of the 'SOS' button will instantly contact the emergency services. If there's a more serious incident, SOS activates automatically. After a breakdown, one push on the 'chevron' button will alert Citroën Assistance, sending both location details and an initial fault report.

## > CONNECTING BOX

Integrated Bluetooth® hands-free phone function with USB socket and jack to plug in a portable MP3 player.

## > EMYWAY SATELLITE NAVIGATION SYSTEM

The eMyWay satellite navigation system features a 7" screen and covers UK and Europe. Its in-built memory provides information about speed limits and lets you know which lane to use when reaching complex intersections. The system also lets you adapt your route based on traffic conditions, with data provided by Trafficmaster and ViaMichelin in the UK and France.

## > ANTI-LOCK BRAKING SYSTEM (ABS)

Computer-controlled braking assistance designed to prevent the wheels from locking under extreme braking. This enables the car to continue being steered and therefore controlled during this braking incident. DS 4's ABS system is further enhanced with EBA and EBD.

## > ELECTRONIC BRAKEFORCE DISTRIBUTION (EBD)

A conventional ABS system cannot account for any of the four wheels wanting to lock more quickly than the others (for example, two of the wheels may be on snow and two on tarmac). EBD reads the deceleration rate of each wheel individually and applies the ABS principles accordingly.

## > EMERGENCY BRAKING ASSISTANCE (EBA)

As drivers we find it difficult to instinctively brake very hard, but this is often what is needed in those rare emergency situations. The EBA system recognises our 'attempt' to brake hard and in combination with the ABS and EBD systems instantly applies the maximum stopping power possible.

## > ELECTRONIC STABILITY PROGRAMME (ESP)

This is computer-controlled traction assistance and is provided primarily through the braking systems. The ESP's control unit constantly compares where the driver intends going (through the position of the steering wheel) with where the vehicle is actually going and, if necessary, makes speed corrections to each wheel individually through braking or engine torque to keep the vehicle 'in line'.

## > ON-BOARD TRIP COMPUTER

DS 4's multi-function on-board trip computer provides you with information at your fingertips. At the touch of a button you can view a range of data like fuel consumption, average speed and mileage possible at your current fuel level.

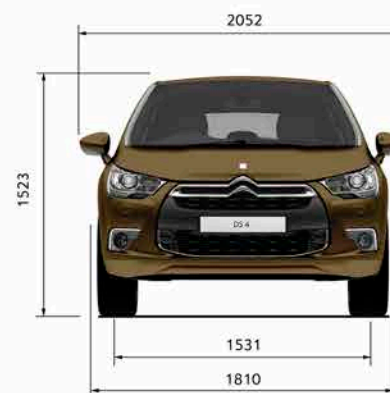
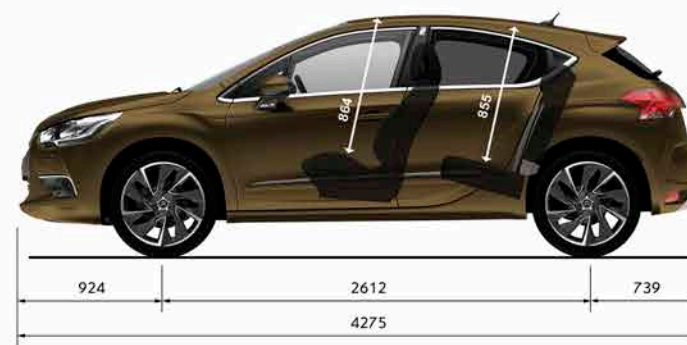
## > FRONT SEAT BELT PRE-TENSIONERS

In the event of a crash, a pre-tensioner will tighten the seat belt almost instantaneously. This reduces the load on the occupant in a violent crash. Like airbags, pre-tensioners are triggered by sensors in the car's body, and use explosively expanding gas to drive a piston that retracts the belt. Seat belt pre-tensioners also lower the risk of 'submarining', which is when a passenger slides forward under a loosely worn seat belt.

## > ISOFIX

A standardised and more simple method for installing child seats, each seat is 'clicked' into place via a three point system. On DS 4, Isofix is installed on the outer rear seats.

# DIMENSIONS



All measurements are in millimetres.



DS AUTOMOBILES

CITROËN prefers **TOTAL**

CITROËN UK Ltd. Pinley House, 2 Sunbeam Way, Coventry CV3 1ND.  
[www.driveDS.co.uk](http://www.driveDS.co.uk)



This brochure is made from paper from a well-managed forest. Citroën support responsible use of forest resources. Please don't throw me away, give me to a friend or recycle me.

NOTE: Every endeavour has been made to ensure that the information and details contained in this brochure were accurate at the time of going to press February 2015. However the company reserves the right, whilst preserving the essential characteristics of the models described, to introduce at any time modifications, changes of details, equipment or accessories. Every effort will be made to bring this brochure up to date, but in order to avoid any misunderstandings please consult your Dealer. For full details of Citroën Care for Car and Driver, please see the full manufacturer's price list. The Citroën Website contains full information on all Citroën products and offers available in the UK, together with details of our environmental and recycling policies. The site address is: [www.citroen.co.uk](http://www.citroen.co.uk) or you can contact Citroën directly via [cuk\\_contactcentre@citroen.com](mailto:cuk_contactcentre@citroen.com)