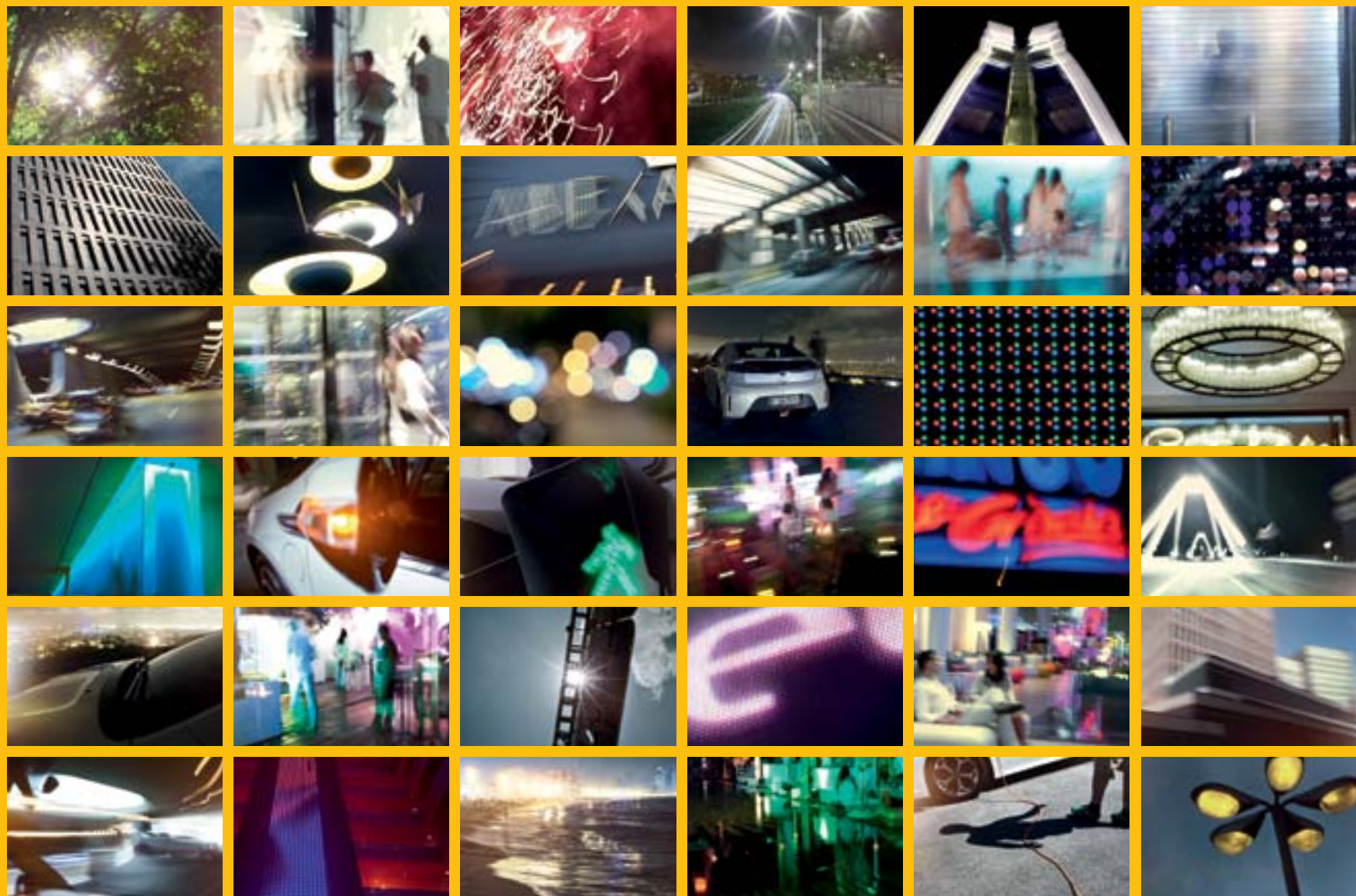


OPEL AMPERA



Wir leben Autos.





REVOLUTIONS START IN THE STREETS.

It's time to join the new movement in e-mobility. The Opel Ampera is a game-changer. The first ever Extended-Range Electric Vehicle (E-REV), it offers uncompromised everyday usability, from short commutes to long journeys. A dynamic, spacious 5-door electric hatchback with range extension capability, the Ampera is in a class and category all of its own.

Revolutions are about breaking free and bringing about change. The Ampera has a positive impact on the environment and benefits your lifestyle and mobility, using electricity to drive you more than 500 km¹. Read on and discover how the Ampera is redefining electric vehicle innovation and eco power.

¹ Cumulated range from battery electric and range-extender operation, based on the respective official combined consumption figures according to regulation R (EC) No. 715/2007 (in the version respectively applicable).

The contents of this catalogue were accurate at the time of going to press (02/2014). We reserve the right to alter specifications and equipment at any time. Please consult your Opel dealer for the very latest information.

CONTENTS

OPEL AMPERA	04	The Ampera
	16	The Ampera Propulsion System
	18	Charging
	20	Instrumentation
	26	The Ampera Driving Experience
	28	Comfort and Convenience
	30	Infotainment
	32	Safety
	36	Extras and Accessories
	38	Trims and Surfaces
	40	Paints and Colours
	42	Opel Service

WELCOME TO AN ELECTRIFYING NEW ERA.

Welcome to an entirely new category of alternative propulsion. The Ampera packs the punch you'd expect from a 250 hp V6 and does it with whisper-quiet power, so it feels like you're flying down the street. Delivering a dynamic, fun driving experience, only the Ampera makes going green this exhilarating, with 370 Nm torque powering you from 0 to 100 km/h in less than 10 seconds. The dynamic Ampera driving experience is explained on page [26/27](#).

Please fill in correct page number.









POWER TO THE PEOPLE.

Change the game, change the world. This philosophy has put Opel at the forefront of developing alternative propulsion that uses renewable resources, reduces our dependency on oil and offers you many benefits. The Opel Ampera is an Extended-Range Electric Vehicle (E-REV), the first of its kind. It succeeds where other electric cars fail, by combining extended range with improved performance, reliability and handling.

The light 16 kWh lithium-ion battery, charged from any standard 230-V outlet¹, powers the Ampera for 40 to 80 km² of zero tailpipe emission, cost-effective driving that makes it ideal for commuting. For your longer trips, the innovative fuel-powered generator provides the electricity to power the drive unit, allowing you to drive more than 500 km². To learn why Ampera technology is a revolution in propulsion, go to page [16/17](#).

¹ Before charging with more than 6 A with the charge cord set, ensure that the capacity of the electrical circuit and socket that you intend to use has been inspected and released accordingly by qualified electrician. ² For details and determination methods, see technical data on page [27](#).

DOING THE RIGHT THING NEVER LOOKED BETTER.

Take possession of a lean, green excitement machine. With an aggressive, low stance and aerodynamic, stylish lines, the Opel Ampera makes a bold statement that's about more than environmentally aware technology. The single-arc roof line, boomerang-shaped headlights, split tail lights and 5-spoke 17-inch alloy wheels¹ give this sporty electric hatchback a head-turning design. Optional wheel inserts are available in Sovereign Silver, Cyber Grey or Urban Fresh.

¹ See page 45 for tyre labelling.

Please fill in correct page number.

Discover the new shape of electric propulsion. All you have to do is scan a picture of the QR code using a smartphone with QR code reader installed.









RESISTANCE IS FUTILE.

The Ampera's streamlined beauty has a purpose. Aerodynamics and airflow played a key role in the sculptured design. Reducing drag improves efficiency and power transfer, meaning you can drive further and for longer. The sleek rounded front, streamlined roof and aerodynamic outside mirrors have an optimized design which greatly improves airflow. Vertical slots on the rear bumper and the lightweight polycarbonate wheel inserts further reduce drag while enhancing the Ampera's sporty, high-tech appearance.





THE FUTURE STARTS HERE.

Step into a new world. From the interactive colour instrument displays to voice recognition and the dynamic flow of the wrap-around dashboard panels, the interior design of the Ampera combines elegant comfort and roominess with state-of-the-art functionality and usability. Two high-definition displays offer you a clear view of the gauges and easy access to key car functions and [controls including Electronic Climate Control for constant climate comfort](#). [Learn more](#) about the interactive displays on page [20/21](#).



**FREEDOM COMES IN MANY
SHAPES AND SIZES.**



► FOR MORE RANGE WE WENT THE EXTRA MILE.

E-REV stands for Extended-Range Electric Vehicle. It's an all new propulsion system for an all new car. The Ampera's E-REV technology delivers 40 to 80 km¹ of low-emission commuting and an extended range of more than 500 km¹ using its on-board petrol-powered generator. It offers all the convenience of a conventional car engine, but with significantly lower emissions and running costs.

The Ampera has two driving modes: Electric Mode and Extended Range Mode. In Electric Mode, the Ampera uses no petrol and produces no emissions. It's powered by its battery and can drive in this mode for 40 to 80 km¹. When the battery runs low, the Ampera seamlessly switches to Extended Range Mode and its petrol-driven generator kicks in. The generator does the work of the battery, producing the electricity for the motor and boosting the range up to more than 500 km¹. Thanks to this innovative system, you can be completely confident that you'll reach your destination – just like if you were driving a conventionally powered car.





The E-REV system has three key components: the electric drive unit, the battery system and the generator. All three can be monitored on the centre stack display. Find out more about the Ampera's innovative displays from page 20.

1. The 111 kW (150 hp) electric drive unit. Together with the battery system or generator, the electric drive unit produces 370 Nm of torque and accelerates the Ampera from 0 to 100 km/h in under 10 seconds, with a top speed of 161 km/h in both Electric and Extended Range Mode.

2. The long-life battery system is durable and powerful. Mounted centrally under the floor, it gives the Ampera a low centre of gravity and generous boot. Unlike temperature-sensitive systems, the Ampera's battery features an effective cooling and heating system that can withstand extremes of hot and cold. To ensure long battery life, it never operates fully charged or depleted and is so reliable that it comes with a 160,000-km or eight-year warranty². The battery level benefits from energy recycled by the Ampera's regenerative braking system. When the car is braking or slowing down, forward motion produces a

g-force that the Ampera converts into electricity and stores in the battery.

3. The generator is powered by a 1.4 litre, 16-valve ECOTEC[®] petrol engine that generates 63 kW (86 hp). This fuel-efficient, low-emission unit kicks in once the battery reaches its minimum charge level. On a full tank, it'll be at least another 420 km³ before you have to refuel.



Get to know the heart of the new Ampera: the revolutionary propulsion system for permanent electric drive. All you have to do is scan a picture of the QR code using a smartphone with QR code reader installed.

¹For details and determination methods, see technical data on page 27. ²Subject to the warranty conditions as outlined in the Opel Ampera service booklet.

³Range from range-extender operation, based on the respective official combined consumption figures according to regulation R (EC) No. 715/2007 (in the version respectively applicable).

➤ PETROL STATIONS ARE SO 2010.

Charging the Ampera battery is simple, by plugging into the charge port on the driver's side front wing you can charge from home, either from a standard 230-V outlet¹ using either the charge cord set, or from the optional home charge station².

To make sure charging goes without a hitch, the Ampera's charge cord is fitted with LED status indicators. If all the lights are green, you know it's safe to go ahead and charge the Ampera. If any flash red, due to voltage or other electrical outlet faults, the car won't charge. In the cabin, the lamp mounted on the dash just inside the windscreen shows the charge status.



There are three charging modes, designed to let you charge the car when it suits you best. Immediate Mode charges the battery as soon as you plug the car into a 230-V¹ outlet. Delayed Departure Time Mode calculates when to start charging according to the departure time you enter on the centre stack display. Delayed Rate and Departure Time Mode lets you charge the Ampera when it's least expensive. The system works out the best charging time using a combination of utility rate information and your chosen departure time.



The charge port is safe and simple to use. Just flip back the lid and plug in the supplied charge cord set (see far right).



The home charge station is available as an option. This wall-mounted charging kit has an extra-long, extendable cord and can be installed at home.²



The supplied charge cord set comes with a practical handle and fits easily into the boot of the car. It has a six-metre cord that rolls up quickly for storage.

¹ Before charging with more than 6 A with the charge cord set, ensure that the capacity of the electrical circuit and socket that you intend to use has been inspected and released accordingly by qualified electrician.

² The home charge station must be installed by a qualified electrician.

➤ JUST SCIENCE. NO FICTION.

Two high-definition displays are the interface between you and your Ampera. The Driver Information Centre in the panel behind the steering wheel is all about peace of mind. The centre stack touch screen gives you access to infotainment, navigation and climate control features, as well as Power Flow information and charging schedules.

The Driver Information Centre (DIC) operates in two modes. In Electric Mode (shown here), it highlights the battery level, expected range and speed on the left of the screen. In Extended Range Mode, when the car is using the petrol-powered generator, the fuel gauge is more prominent and the battery gauge is greyed out. The DIC also gives you a choice of two views. The Simple Configuration View displays the battery level and remaining range, along with the speedometer. Enhanced View switches to a real-time driving efficiency gauge that shows you how efficiently the car is running. To find out about the revolutionary centre stack touch screen (far right), turn the page.





DIESEL Energieeffizienz 23°C 10:10

Diese Fahrt

Fahrstil | Klimaeinstellungen



DRIVE MODE

VOL

➤ KNOWLEDGE IS POWER.

Electricity makes cars fit for the 21st century, and the Ampera's interactive centre stack screen does the same for in-car displays. If you get a kick out of the latest electronic gadgets, you'll love using the Ampera's control centre. It does more than give you access to key information and features. At the touch of a finger, it brings the whole car to life.

1. The 7-inch centre stack display couldn't be clearer or more intuitive to use. With just a few touches, you can choose music and the best route, programme the Ampera's charging schedule and monitor Power Flow. Your options and choices show up clearly as attractive coloured graphics. This central display also serves as the control panel for the Electronic Climate Control (ECC) shown here in the big picture. Since air conditioning uses power and can therefore affect the Ampera's range, the ECC offers three different climate modes: Fan Only, Eco and Comfort. These let you choose whether the ECC should draw energy from the battery or petrol tank and, if so, how much. You select the ideal trade-off for your needs. The climate efficiency gauge bottom left shows you in real time how your ECC choices affect power consumption. For more information on key centre stack features, see page 30.



2.



2. The charging display. When the system indicates a low battery, you can pick a charging mode and programme the charging schedule on the centre stack display. Once charging begins, the charge status and current range in Electric Mode appear on the DIC. For more on charging modes, turn back to page 18.

3.



4.



3. The Power Flow display. The centre stack gives you a clear animated overview of the Ampera's drive systems, so you always know exactly which power source you're using as well as how long it'll be before you need to recharge or fill up. A simple touch of the Power field top left activates the display. In Electric Mode, the battery glows green.

4. When the engine engages the petrol-powered generator, the battery animation fades out and the generator glows instead.

> OPEN-EYED ASSISTANTS.

Nobody is perfect – especially in today’s demanding traffic conditions. With Opel Eye you have an attentive and reliable co-driver that warns you in critical situations and helps you to avoid speeding tickets, while the Rear View Camera makes it easy to perform perfect parking manoeuvres in tight spaces.

1. The Rear View Camera (RVC). Mounted above the Ampera’s rear number plate, the optional RVC shows the area behind the car on the centre stack display to help you reverse safely, using your rear bumper as a point of reference. You quickly get used to looking forward at the display instead of straining your neck to look back over your shoulder.



Advanced Opel Eye is a front-mounted camera that continuously scans the road ahead and feeds the safety systems shown below with the information they need.

2. Lane Departure Warning. An Opel Eye-based safety feature that sounds an alarm and lights an icon if you cross a lane-dividing line without signalling. It can be switched on or off to suit driving conditions.

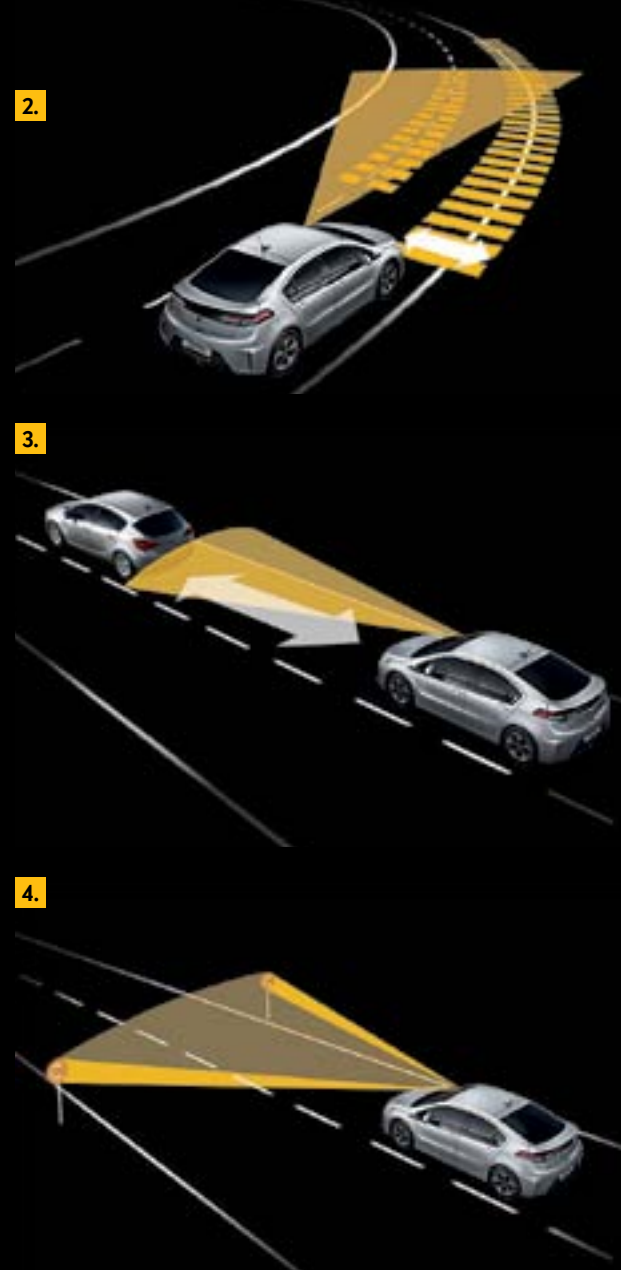
3. Following Distance Indication (FDI) and Forward Collision Alert (FCA). FDI constantly monitors the distance between your Ampera and the car in front, so you can avoid getting too close. FCA triggers visual and audible warnings if you approach slower-moving vehicles too fast.

4. Traffic Sign Assistant. A trusted technology that continuously checks a variety of speed limits and other signs and issues appropriate warnings to the driver whenever new regulations apply. Traffic Sign Assistant can even read electronic signs over motorways.

2.

3.

4.



► THE FLASH IN OUR LOGO NEVER MADE MORE SENSE.

The Ampera is lightning quick and power efficient. With a torque of 370 Nm, you can accelerate from 0 to 100 km/h in less than 10 seconds, and do it with the almost silent electric drive unit. Whether you're in Electric Mode or Extended Range Mode, the 111 kW (150 hp) electric drive unit powers the wheels at all times, with instant torque and a top speed of 161 km/h.



Engineered to perform in any climate, the Ampera features four performance modes for varying driving conditions and styles.

Normal Mode: the default setting and the most efficient driving mode.

Sport Mode: automatically reconfigures the response of the accelerator pedal to provide quicker torque application for dynamic driving situations.

Mountain Mode: automatically adjusts the system for efficient performance in mountains, keeping the battery charge at a high level in case supplementary power is required.

Hold Mode: drive using the petrol-powered generator and conserve the energy of the battery, then switch to battery for inner city driving.

The suspension is tightly tuned for responsive driving dynamics. The Ampera's light-weight suspension system and extremely stiff body structure connect the driver to the road. The independent McPherson strut-type front suspension improves stability while

the semi-independent rear suspension is 10 % lighter than torsion beam suspensions. For optimized control and agile handling, the Ampera features the latest steering technology – a rack-mounted electric power steering system.

The braking system draws on two different technologies: regenerative braking and the widespread disc variety. Regenerative braking can handle more than 90 % of braking situations. It harnesses the g-forces generated by deceleration and converts them into electricity that can be stored in the battery. For more extreme braking, the Ampera automatically uses a mixture of the regenerative and more powerful disc brakes. In an emergency, it switches on Brake Assist and transitions immediately to 100 % disc.

The Electric Parking Brake (EPB) takes the work out of using the handbrake. You can turn it on and off with a switch on the centre stack.

TECHNICAL DATA

Propulsion system

Electric drive unit	111 kW (150 hp), 370 Nm
Lithium-ion battery	16 kWh
Range-extender petrol engine	1.4 ECOTEC®, 63 kW (86 hp)
Consumption and emission¹	
Fuel consumption (combined and weighted)	1.2 l/100 km
CO ₂ emission (combined and weighted)	27 g/km
Range	
Official electrical range (battery mode) ¹	83 km
Typical electrical range ²	40–80 km
Total range ³	more than 500 km
Battery charging times	
Home charge station (optional) ⁴	approx. 4 hours ⁶
Charge cord set 10 A ⁵	approx. 6 hours ⁶
Charge cord set 6 A	approx. 11 hours ⁶

All information was accurate and up to date at the time of going to print. The company reserves the right to alter engine specifications at any time, which may influence the content of the shown data. Please consult your Opel dealer for the latest information. All figures quoted relate to the EU base model with standard equipment.

¹Fuel consumption data, CO₂ emission data, official electrical consumption data and official electrical range data are determined according to regulation R (EC) No. 715/2007 (in the version respectively applicable), taking into consideration the vehicle weight in running order, as specified by the regulation. Additional equipment may lead to slightly higher results than the stated consumption and CO₂ figures. ²Typical electrical range means the range achievable in battery modus with a fully charged battery under typical everyday driving conditions, modest use of engine performance and in average weather conditions (without use of additional electrical consumers). The range is substantially influenced by the driving style. ³Cumulated range from battery electric and range-extender operation, based on the respective official combined consumption figures according to regulation R (EC) No. 715/2007 (in the version respectively applicable). ⁴The home charge station must be installed by a qualified electrician. ⁵Before charging with more than 6 A with the charge cord set, ensure that the capacity of the electrical circuit and socket that you intend to use has been inspected and released accordingly by a qualified electrician. ⁶Average charging time needed when charging under average weather and temperature conditions. Achievable charging time depends on different factors such as temperature and electrical installation used.

The figures for fuel consumption, electrical consumption, range and CO₂ emissions do not relate to a specific vehicle and are not part of an offer. They are provided only for the purpose of comparison between different vehicle variants. Additional equipment may increase the weight of the vehicle when empty, which may lead to a reduction in top speed and increased acceleration time. The published performance figures assume a 75 kg driver plus 125 kg load.

**➤ THE THING YOU'LL NOTICE IS
YOU DON'T NOTICE A THING.**

Low emissions meet high comfort in the Ampera, giving you all the convenience you'd expect from a conventional car. There's ample room for four people – and plenty of innovative surprises.



Remote Start warms up or cools down the car before you get in. A touch of your key activates the climate conditioning system, which pre-conditions the cabin and windows, even starting the engine if need be. When plugged in, the car takes the energy required for pre-conditioning straight from the grid instead of the battery.

Remote keyless entry and keyless ignition are standard, with the propulsion unit activated by pressing the start/stop button. For your comfort, four bucket seats with leather-trimmed surfaces are standard, and both front seats can be heated remotely before you start your journey. With optional anti-theft protection, the car alarm will sound and exterior lights will flash if any attempt is made to enter the Ampera before it's unlocked.



The front centre console comes with USB, aux-in and 12-V power outlets for your smartphone and MP3 player. The rear-seat console also has a 12-V outlet. Both consoles offer an armrest with closed storage, an open storage for small items and two cup holders. For accessories that add to your comfort and convenience, please see page 36/37.

The 310-litre boot provides plenty of room for your gear. If you need more space, the rear seats fold down separately. In the boot, the recessed compartment under the floor is ideal for storing breakables and the portable charge cord set. For smaller items, the cabin offers storage opportunities in the front and rear centre console as well as the door pockets.

► INTERACTIVE GOES ATTRACTIVE.

Discover and enjoy leading interactive technology. Like voice, steering wheel, or touch screen control, with universal connectivity via IntelliLink. And, clear colour touch and display screens with intuitive menu navigation keep you relaxed, informed, in touch and entertained.

1. IntelliLink radio with navigation. The optional state-of-the-art IntelliLink radio with navigation features a 7" colour touch screen with bird's eye view in 3D. The navigation software for more than 30 European countries and points of interest are stored in the internal memory for fast access. Navigation can be started by one-shot destination entry via Voice Control.





IntelliLink

2. IntelliLink – a touch of genius. The IntelliLink radio and IntelliLink radio with navigation offer much more than hands-free voice-controlled calling and navigation. IntelliLink lets you downstream your audio data via Bluetooth® or via USB with the convenience of Gracenote® content management. It reads out incoming SMS and lets you send a predefined message or call-back. All easy, intuitive and safely controlled over the large 7" colour touch screen or steering wheel.

3. The premium audio sound system. The optional Bose® Energy Efficient Sound System with six high-performance speakers and a subwoofer delivers a superior listening experience while using less energy.

YOU THINK YOU'RE SPECIAL? SO DO WE.

The Ampera feels safe and secure, inside and out. Made from high-strength steel and with a stiff body structure, the Ampera boasts an extremely rigid passenger cell that offers protection in crash conditions, particularly with a side impact or rollover. The battery, located in the centre of the car, is protected by rails and alloy steel plates.





1. Eight airbags as standard. The Ampera has dual-stage front airbags and knee airbags, as well as side impact airbags extending over both seating rows. Adjustable headrests protect against whiplash, while the collapsible pedal assembly helps prevent lower leg injuries. All the seats feature three-point seat belts, with shoulder-belt retractors and lap pretensioners in the front seats.

2. Safety measures proactively prevent accidents. The Ampera has safety features which work to stop accidents from happening, including ABS brakes, Electronic Stability Program (ESP®), which limits wheel spin or loss of traction, and the Tire Pressure Monitoring System shown here. Daytime running lights switch on automatically to make the Ampera more visible to other drivers and pedestrians, while Front & Rear Park Assist makes parking easier. Because the Ampera is so quiet in Electric Mode, the Pedestrian Friendly Alert emits a chirping sound to make sure people are aware of the car.

Optional safety equipment includes a day-glow colour vest, first-aid kit and warning triangle, which are mandatory in some countries.







The Opel Ampera rises to the challenge of electrically powered driving. But every driver is different. That's why with our accessory range, you can tailor the Ampera exactly to your needs.



Customize your Ampera. Wheel inserts are just some of the many accessories at your disposal. Browse the full range at www.opel-accessories.com

Please fill in your local specifications.

➤ MAKE SOMETHING SPECIAL UNIQUE.

This is a car that's designed to be driven every day, for short commutes and longer trips. With some well-chosen, dedicated Opel accessories, you can make your Ampera the perfect fit for your daily routine and requirements.

1. The fitted elastic cargo net keeps breakables safe. Plus, you can store smaller, frequently used items in one place so they're easy to get at.





2. Public charge point set. Provides easy connection to any public charge point using the 'Mennekes' system.



3. The foldable boot liner protects the load space and bumper when you're loading and unloading bulky items. To keep the boot clean, there's a non-skid hard cargo liner that neatly fits on the luggage compartment floor.



4. Velours floor mats have a rubber backing and protect the carpet.

5. Windscreen sunshade and privacy shades. The windscreen sunshade protects from strong sunlight and folds conveniently into the storage bag provided. The high-quality fabric privacy shades block over 70% of direct sunlight to the rear seats while still enabling the windows to be opened.

> TRIMS AND SURFACES.

Outstanding innovation and ground-breaking design deserves real style. The interior of the Opel Ampera delivers it. Jet Black fabric or seats with leather-trimmed surfaces are dramatically highlighted by Frosted Nickel inserts, as are the wrap-around dashboard and door décor insert elements.

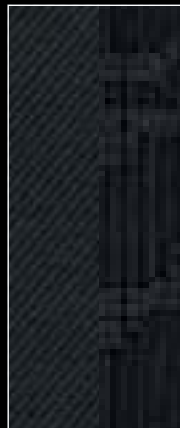
Dark Argent brings a muted, affluent character to the centre console. Or for eye-catching contrast there is the alternative of Ceramic White décor, naturally carried over into the centre console.



FROSTED NICKEL TRIM

Jet Black fabric seats with Frosted Nickel insert highlights.

Frosted Nickel décor highlights.

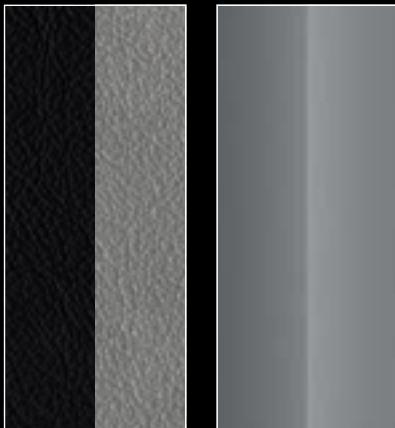




FROSTED NICKEL TRIM

Jet Black seats with leather-trimmed surfaces and Frosted Nickel insert highlights.

Frosted Nickel décor highlights.



CERAMIC WHITE TRIM

Jet Black seats with leather-trimmed surfaces and Frosted Nickel insert highlights.

Ceramic White décor highlights.



▶ PAINTS AND COLOURS.

The sensation of pure style extends from the inside to the outside of the Opel Ampera with a colour palette designed to maximize the flair. The premium appeal of Cardinal Red is calculated to turn heads in any company. Sovereign Silver and Subterranean Brown bring an enticing metallic gleam. Black or Summit White seem to maximize the classic proportions. Whichever you choose, you'll be surrounded by an aura of quality.

SOLID

Black



Summit White



TWO-COAT METALLIC¹

Sovereign Silver



Subterranean Brown



PREMIUM FINISH¹


Cardinal Red



Trims			
	Frosted Nickel	Frosted Nickel ¹	Ceramic White ¹
Seats			
	Jet Black, fabric with Frosted Nickel insert highlights	Jet Black, leather-trimmed surface with Frosted Nickel insert highlights	Jet Black, leather-trimmed surface with Frosted Nickel insert highlights
Solid body colours			
Black	•	•	•
Summit White	•	•	•
Two-coat metallic body colours ¹			
Sovereign Silver	•	•	•
Subterranean Brown	•	•	•
Premium finish body colour ¹			
Cardinal Red	–	•	•

• = available – = not available

TYRE LABELLING

Dimension	215/55 R17
Tyre Fuel Efficiency Rating	B
Tyre Wet Grip Rating	B
Tyre Noise Rating (dB)	71
Sound Class	

¹ Optional.

➤ YOU BUY MUCH MORE THAN A CAR.

Opel's tailor-made service and warranty scheme gives you peace of mind, with 24-hour roadside assistance, access to personalized service and long-term warranties. The Ampera warranty includes rust-through corrosion for up to 12 years/160,000 km, with the batteries and components covered for eight years or 160,000 km¹.

¹Subject to the warranty conditions as outlined in the Opel Ampera service booklet.



ose between this version and version B.



If you require service and maintenance information, you can benefit from our dedicated My Ampera Service. Available in 17 languages and 12 countries, My Ampera Service is your first point of contact for a range of services.



Should you need assistance on your travels, our Opel Roadside Assistance is always at hand to get you moving again. Call the 24-hour hotline to coordinate repairs with a local Opel authorized service and get a replacement car, if required.



Dealer network information can be found on the owner's website at [XXX WEBLINK XXX](#).



The Ampera is covered by extensive warranties. For more information, please contact your local dealer.

**NOTE TO COUNTRIES/
TRANSLATORS:
PLEASE ADAPT THE URL TO
YOUR MARKET.**



www.opel.com

Some illustrations in this brochure contain special equipment not included in standard delivery. The information contained in this brochure was accurate at the time of going to press. We reserve the right to make changes in design and equipment. The colours printed in the brochure only approximate actual colours. Illustrated optional equipment is available at extra charge. Availability, technical features and equipment provided on our vehicles can vary outside of the Federal Republic of Germany. Information about Design for Recycling, take-back locations for End of Life Vehicles (ELVs) and the recycling of ELVs can be found on the Internet page www.opel.com. For precise information on the equipment provided on our vehicles, please contact your local Opel partner.

ADAM OPEL AG, Rüsselsheim

Edition 02/14



FSC® certified print product

This brochure is produced from 100% recycled fibre.

www.fsc.org

► YOU THINK YOU'RE SPECIAL? SO DO WE.

The Ampera feels safe and secure, inside and out. Made from high-strength steel and with a stiff body structure, the Ampera boasts an extremely rigid passenger cell that offers protection in crash conditions, particularly with a side impact or rollover. The battery, located in the centre of the car, is protected by rails and alloy steel plates.



The Opel Ampera has been awarded the maximum 5-star rating by Euro NCAP for its excellent safety performance.



1. Eight airbags as standard. The Ampera has dual-stage front airbags and knee airbags, as well as side impact airbags extending over both seating rows. Adjustable headrests protect against whiplash, while the collapsible pedal assembly helps prevent lower leg injuries. All the seats feature three-point seat belts, with shoulder-belt retractors and lap pretensioners in the front seats.

2. Safety measures proactively prevent accidents. The Ampera has safety features which work to stop accidents from happening, including ABS brakes, Electronic Stability Program (ESP®), which limits wheel spin or loss of traction, and the Tire Pressure Monitoring System shown here. Daytime running lights switch on automatically to make the Ampera more visible to other drivers and pedestrians, while Front & Rear Park Assist makes parking easier. Because the Ampera is so quiet in Electric Mode, the Pedestrian Friendly Alert emits a chirping sound to make sure people are aware of the car.

Optional safety equipment includes a day-glow colour vest, first-aid kit and warning triangle, which are mandatory in some countries.



➤ OPEL SERVICE.

Every Opel is designed and built to perform day in and day out. But like any piece of precision engineering, it performs best when it's cared for by people who really know what they're doing.

Europe-wide Customer Service.

Throughout Europe, more than 6,000 Opel repair workshops are ready to provide professional and punctual service. As you'd expect, they'll repair your vehicle to the highest standards. More unusually, perhaps, they'll tell you exactly what's been done and why, and they will show any costs involved clearly and concisely.

Opel Roadside Assistance. This mobility service is valid and free of charge for all new Opel vehicles during the first year after the date on which they were first registered or delivered to the customer by the distributor, depending on which date comes first. No matter where you are, the Opel Roadside Assistance is there to help. In more than 40 European

countries – round the clock. Offering services such as breakdown assistance, towing services, rental car, hotel accommodation or the organization of onward transportation, e.g. via rail or air (please see programme conditions). Your distributor or authorized repairer will be happy to offer an extension at your annual service.

Financing Offers. Opel Finance offers you interesting tailor-made financing models. You alone decide how you would like to pay for your vehicle, in accordance with your particular needs.

Leasing Offers. You can also lease your Opel, for example through Opel Leasing. Leasing terms can be adapted to fit your business requirements and capabilities. Also, Master Lease offers you a complete

fleet management service from one source.

Insurance Service. Our Opel Insurance Services rounds off the Opel Service Package. We offer Opel customers all types of automotive insurance.

Opel Rent Service. Opel Rent will keep you on the road if your vehicle is out of service.

New Vehicle Warranty. 2-year new vehicle warranty. This warranty applies to any new Opel car for a period of 24 months without any mileage restrictions, as from the day on which it was either registered for the first time or delivered to the customer by the dealer, depending on which date comes first.

Please adapt Opel Financial Services nomenclature locally.

Extended Vehicle Warranty. This repair cost insurance enables you to extend the warranty on your new vehicle to a maximum of 10 years.

12-year Anti-Perforation Warranty. Opel provides you with a reliable long-term warranty against perforation, provided you have your vehicle serviced and all necessary inspections performed according to the service booklet.

3-year Warranty for Opel Batteries. With a 3-year warranty for service-installed Opel original batteries your starting problems are over – even in the coldest winter.

Parts and Accessories Service. Opel parts and accessories are available at

your local Opel Shop, where you'll find everything to make your vehicle more comfortable or to meet your individual needs, as well as expert advice.

Opel on the Internet. Need instant information? At www.opel.com you can access a wealth of information on all Opel cars, services and accessories. Get online for Opel news and product updates.

Recycling. Information about Design for Recycling, Take-Back points for End of Life Vehicles (ELVs) and the recycling of ELVs can be found on the Internet page www.opel.com

In case of any questions, please ask your Opel partner. More information can be found under www.opel.com

Please fill in your local specifications.

