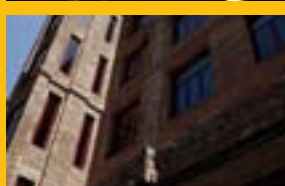
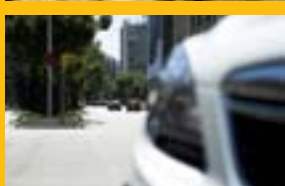
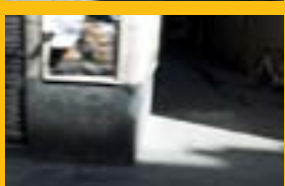
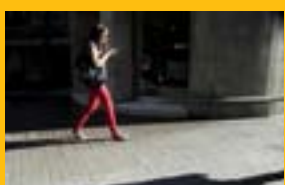


OPEL MOKKA



Wir leben Autos.





OUTSTANDING BY NATURE.

If you want to ride tall in a compact car, you have to think different. Think bigger. Think Mokka. This innovative new Opel combines the high ride, sporty looks and guts of an SUV with the efficiency and dynamic handling of a compact car. The Mokka puts cutting-edge Opel design and technology right in your hands – and a sense of adventure back in your everyday drive.

The contents of this catalogue were accurate at the time of going to press (02/2014). We reserve the right to alter specifications and equipment at any time. Please consult your Opel dealer for the very latest information.

CONTENTS

please check and adapt acc.
your local offer concerning “drive!”

| | | |
|-------------------|----|---------------------------|
| OPEL MOKKA | 04 | The Mokka |
| | 16 | Model Variants |
| | 22 | SUV Technology |
| | 24 | Comfort and Versatility |
| | 28 | Driver’s Assistants |
| | 32 | Infotainment |
| | 34 | Accessories |
| | 38 | Engines and Transmissions |
| | 39 | Rims and Wheels |
| | 40 | Trims and Surfaces |
| | 44 | Paints and Colours |
| | 46 | Opel Service |

THINK BIG. RIDE CLEVER.

The Opel Mokka is no ordinary SUV. It's more compact, more agile and more economical. Like a full-on off-roader, only much smarter. It's packed with German-carmaker quality and clever ideas. What's more, you can add innovative options like the fully integrated FlexFix® bike carrier system and 4x4 All Wheel Drive. The big wheels and bold stance show the Mokka's ready to rough it. But no matter how rough things get, forward-thinking Opel engineering ensures it's a smooth operator.









AGILITY MEETS UTILITY.

The Mokka looks big and inside it is. On the outside, it's compact enough to be nimble in traffic. The muscular, sporty design is also lightweight, so it saves a bundle on fuel bills and emissions. There's ample storage in the cabin and plenty of space behind the back seats, which you can split 60/40 to stretch out the boot. Practical, versatile and more convenient all-round, the Mokka is streets ahead of a conventional SUV.



Mokka simply delivers. Find out more about this ground-breaking new Opel at www.countryspecificurl.com

Please fill in your local specifications.

INTELLIGENCE IS ALWAYS ATTRACTIVE.

The Mokka has the brains to go with the muscle. It's full of intelligent ideas that make driving more fun and life more laid-back. Some of the safety options are world class, like the enhanced Opel Eye front camera and award-winning Adaptive Forward Lighting Plus (AFL+)¹. The Mokka also has the technology to deliver superior ride and handling. **From speed-sensitive steering to advanced Electronic Stability Program, common sense comes standard with this SUV.**



¹The Allianz Genius 2010 safety prize, awarded by German insurer Allianz for technology that makes driving safer by reducing the frequency and severity of road accidents.







MORE SUV WON'T FIT IN A COMPACT CAR.

The Mokka's interior is a real eye-opener. And a leg stretcher, too. It seats five with no fuss and the extra height ensures a commanding view. There are **four** distinct lines to choose from – the Essentia, the Enjoy, **the drive!** and the top-of-the-line Cosmo shown here. You can equip them all with cutting-edge Opel technology options and accessories, just like a full-on SUV.





TAKE YOUR BIKE FOR A RIDE.

If you're into park-and-bike-ride, you'll be into FlexFix®. For action-packed biking, this Opel unique carrier is the ideal add-on. A first in this car category, it slides in and out of the bumper so you can easily mount your bike on the back of the SUV. To open the boot, you just tilt FlexFix® out of the way. Fit the optional FlexFix® extension to add two more bikes.



**THERE'S ONLY ONE WAY
OF LIFE. YOUR OWN.**



> ESSENTIA.

The Essentia packs more than just a few basics. Power front windows and powered heated mirrors are standard. Another comfort feature is the tilt and telescope steering wheel, a great way to experience the precise speed-sensitive power steering. Like every Mokka, the Essentia combines a rugged exterior design with a spacious interior.



Pictures may show optional equipment.



1.



2.

1. Inside it's all about ergonomics.

There's a comfortable four-way adjustable driver's seat and two glove boxes, plus the Cruise Control switches are mounted in easy reach on the steering wheel. Smart design like this makes the Mokka a pleasure to drive.

2. Daytime Running Lights (DRL).

DRL stay on all day, which makes your SUV more visible and driving safer. They also use a lot less energy than traditional headlights on low beam.

3. 60/40 split rear seats.

This versatile design gives you the flexibility to fold down part of the back seat and expand the boot to take a long load. You still have room for one or two back-seat passengers.



3.

ENJOY.

The Mokka Enjoy has all the high-tech and convenience of the Essentia with special features on top, including the Bluetooth®-capable CD 450 infotainment system (see [page 33](#)). Different wheels and fog lamps big up its sporty, SUV looks.

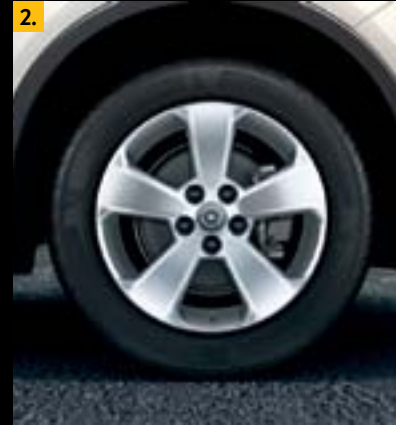
Please check page numbers in brackets



1. Fog lamps. Factory-fitted fog lamps make the Mokka more visible to other motorists in poor weather – and enhance its powerful SUV styling outside.

2. 17" wheels. Make your mark in the crowd with 17" alloys in Sterling Silver as standard.

3. Special features. The Enjoy also comes with the added comfort of air conditioning and a leather steering wheel with remote controls for audio devices.





> COSMO.

The Mokka breaks the mould of traditional car categories and the top-of-the-line Cosmo is in a whole different car class. With Park Assist front and rear, a rain sensor and High Beam Assist as standard, it's the stand-out version of a stand-out car.



Pictures may show optional equipment.



1.

1. Chrome window frames. Upmarket chrome catches the sun and the eyes on the range-topping model, highlighting the distinctive side window form that characterizes Mokka style.

2. Electronic Climate Control (ECC).

The factory-fitted ECC has dual-zone settings – so you can set a different temperature for each side of the car – and it comes with an advanced compressor that reduces fuel consumption by only cooling when it has to. A filter system catches pollen, dust and unpleasant odours.



2.

> FEEL THE GRIP.

Optional intelligent 4x4 All Wheel Drive (AWD) technology gives your Mokka that big SUV buzz. Depending on road and driving conditions, it changes in real time from fuel-saving front-wheel drive to optimal traction on all four wheels.

The Electronic Stability Program Plus (ESP^{®Plus}) of the Mokka with 4x4 All Wheel Drive offers additional high-tech aids to make it safer. On steep slopes Hill Descent Control and Hill Start Assist let you always stay on top of the situation.

1.



2.



1. Hill Start Assist (HSA). HSA does exactly what the name says. It lets you start and park easily on hills without using the handbrake. For a few moments it automatically holds the brakes for you, to stop you rolling unintentionally backwards or forwards into obstacles or other vehicles.

2. Hill Descent Control (HDC). If you do take the Mokka off-road, you can use HDC to control your speed on extreme downhill gradients without having to brake. Using the foot brake can be tricky on very steep hills.



Fit your Mokka with optional 'active on demand' 4x4 All Wheel Drive (AWD) and look forward to increased driving stability in the worst of conditions. AWD uses sensors to monitor the relative speed of the wheels, then a sophisticated Torque Transfer Device automatically distributes torque between the front and rear axle.

> PACK AND RELAX.

The Mokka's advanced ergonomics mean you couldn't wish for a more comfortable compact. Or one with more room – there are up to 19 storage compartments to free up the space. A vast range of accessories and options help tweak your Mokka to suit what you want to do, from heated front seats to the Comfort Pack with Electronic Climate Control, which comes standard on the Cosmo.

1. Ergonomically designed (AGR) seats. The ideal choice for long-distance drivers, these optional seats are specially designed to give extra support to the most sensitive areas of your legs and back.





2. Driver's seat armrest. This practical armrest supports your elbow just where you need it and adds comfort to your ride.

3. Rear View Camera (RVC). The optional RVC helps you get a clear view of the area behind the car when you reverse. Looking forward at your display instead of backwards makes parking much more comfortable.



4. Heated steering wheel. Keep your hands warm in a cold snap and order this leather-bound wheel as part of the optional Winter Pack that also includes heated front seats.



5. FlexFix® bike carrier system. This optional, fully integrated rack slides in and out of the Mokka's bumper so you can easily mount your bike on the back of the car. To open the boot, you just tilt the rack out of the way. Add the optional FlexFix® extension to carry two more bikes.



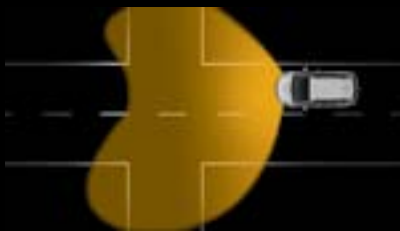


The rougher, the smoother. Athletic, compact and muscular, the Mokka is an agile performer in any environment. SUVs don't get any more versatile than this.

➤ SEE FURTHER. DRIVE SAFER.

Sophisticated driver aids set the Mokka apart. It's the first car in its category to offer adaptive bi-xenon headlights, in the shape of Opel's award-winning Adaptive Forward Lighting (AFL+)¹. AFL+ makes driving at night just as comfortable as driving in the daytime. It uses a forward-mounted camera to improve visibility and safety by automatically adjusting the direction and strength of your headlights to suit different speeds, manoeuvres, weather conditions and traffic situations.

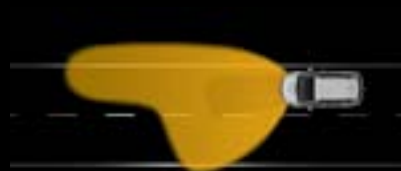




Pedestrian Area Light (up to 30 km/h). Highlights potential hazards with a wider spread of light (an extra 8° left and right).



Town Light (30–55 km/h). Spreads the light wider and lower. Activated by vehicle speed and street lighting.



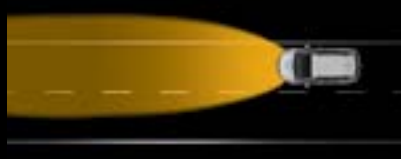
Country Road Light (55–115 km/h). Wider and brighter than normal, for a 70-metre dazzle-free beam.



Highway Light (over 115 km/h). Raises, brightens and extends the beam to 140 metres – without blinding other drivers.



Adverse Weather Light (up to 70 km/h). Activated by wipers or a rain sensor, this setting improves vision in wet weather.



High Beam with Assist (over 40 km/h). AFL+ automatically switches from high to low beam when it detects traffic ahead – and back to high when the road is clear.



Dynamic Curve Light (any speed). The headlights turn into the curve by up to 15°. Activated by steering angle and speed.



Static Cornering Light (up to 40 km/h, also works in reverse). Throws light 90° to the left or right, so you can see better what's around the corner.

> SUV, AS IN SAFER UTILITY VEHICLE.

From a steep descent off-road to a fast commute in a cloudburst at dusk, the Mokka can handle them all. In addition to built-in advanced ESP^{®Plus} with Hill Start Assist and Hill Descent Control on 4x4 All Wheel Drive versions, intelligent driver-aid options like the Opel Eye camera¹ help keep your SUV on the straight and narrow.

The Mokka has first-class safety systems and the certification to prove it: a maximum 5-star rating from Euro NCAP for safety performance.²



The Mokka's passive safety systems are uncompromising and comprehensive. You are surrounded by a high-strength steel rigid passenger cell as well as front, side and full-length curtain airbags. Pedestrians are protected by bumpers that use low-density foam designed to reduce the risk of leg injuries. The optional tyre pressure monitor warns you whenever the tyres need pumping up.

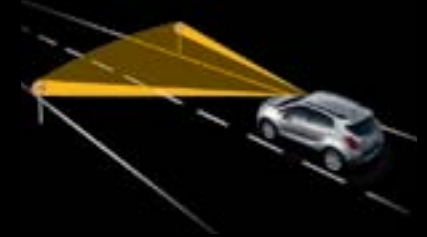




Lane Departure Warning (LDW, via Opel Eye). LDW gives you a warning if you start drifting unintentionally out of your lane. Crossing the line without signalling is enough to activate the system and trigger acoustic and visual alarms. You can switch off LDW to suit driving conditions.



Forward Collision Alert (FCA, via Opel Eye)¹. FCA is an effective technology for preventing bumper-to-tail collisions. At speeds above 40 km/h it triggers visual and audible warnings if you get too close to the vehicle in front. You can easily adjust the sensitivity of FCA using a dial mounted on the steering wheel.



Traffic Sign Assistant (TSA, via Opel Eye). TSA continuously monitors road signs to make sure you're aware of the speed limit and other restrictions all the time, even when temporary signs are put up. The new and enhanced version of TSA can read more signs in more countries than ever before, including electronic signs over motorways.

Tyre Pressure Monitoring System (TPMS). The standard TPMS means you don't have to stop to check your tyre pressures. If any of them start to deflate, it warns by a telltale in the instrument and, depending on the model, indicates the precise pressure of each individual tyre.



The Opel Eye¹ is a special, optional camera mounted at the top of the Mokka's windscreen, that scans the road ahead and relays what it sees to advanced technologies like Lane Departure Warning, Forward Collision Alert and Traffic Sign Assistant.

¹Optional on Enjoy and Cosmo, not available on Essentia.

²In 2012, the Mokka was tested in the four Euro NCAP test categories Adult Occupant Protection, Child Occupant Protection, Pedestrian Protection and Safety Assist. It achieved excellent results with 100% for assistance safety and 96% for adult protection.

➤ HIGH TECH ON TAP.

The Mokka is robust and ready to rock. But it still has all the technology you need to keep entertained and in touch. Your advanced infotainment options range from Bluetooth® and Voice Control capability for universal hands-free phone kits to the latest multi-feature sat nav systems.

1. Navi 950 Europe IntelliLink. The state-of-the-art Navi 950 Europe IntelliLink features a 7" colour display with bird's eye view in 3D and steering wheel control. The navigation software for more than 30 European countries and a comprehensive travel guide with pictures is stored in the internal memory for fast access. Navigation can be started by one-shot destination entry via Voice Control. It has a CD drive for audio files and voice recognition also for phone, radio and CD/USB. You can hook up external devices via aux-in or USB – for example to upload your favourite photo as a screen saver – and the sound is clear as a bell. IntelliLink integrates your smartphone into the infotainment system, the pre-installed Gracenote® software identifies and manages your audio files for perfect enjoyment.



1.





2. CD 400 and CD 450. The range of refined audio systems starts with the CD 400. Its double tuner ensures optimal Traffic Message Channel (TMC) functionality. 4 x 20 Watt, 6 premium speakers deliver an all-round listening experience fine-tuned by the integrated Dynamic Sound Processor, aux-in lets you hook up your mobile audio devices. The CD 450 adds Bluetooth® for hands-free mobile phone operation and USB connection as standard.

3. CD 600 IntelliLink. On top of that, the CD 600 [IntelliLink](#) comes with a 7" high-resolution colour display that also functions as screen for the optional Rear View Camera and can show individual pictures uploaded via [USB](#). It [reads out incoming SMS and happily integrates car-optimized apps¹](#). [IntelliLink technology](#) also includes audio streaming via Bluetooth®. When connected via USB, Gracenote®, a music database, identifies artist, album and song names and also helps you to manage your music collection. All radios are available with optional DAB, DAB+ and DMB, making it compatible with every European digital radio system.

4. Plug-and-play USB connectivity. With a USB interface, you can hook up most MP3 players, smartphones or USB sticks to your Mokka's infotainment system and access music, podcasts and other files via the steering wheel remote.

5. Bose® sound system. From resonant depths through to lilting highs, the specifically designed Bose® sound system for the Opel Mokka delivers every note and beat with outstanding clarity and brilliance. Bose® digital sound processing and 7 optimally positioned premium quality speakers with a Richbass® woofer in a custom engineered bass bin give concert-like quality. Available in combination with [CD 600 IntelliLink](#) and [Navi 950 Europe IntelliLink](#).

¹A compatible portable device with an Internet connection is required to download apps, which are available approximately from summer 2014.

➤ ACCESSORIES.

The Mokka has the looks and high tech you need every day in the city, plus the room you need to take friends and family away on a trip. Whatever you want to do with your Mokka, check out the range of accessories to find out if they can help you do it even easier, quicker and safer.



Look for what you need. For the full range of Mokka accessories, take a trip to www.opel-accessories.com



Please fill in your local specifications.



1. Roof base carrier with Thule roof box. If you're into sports and like to make the most of your time outdoors, even the Mokka's ample interior and optional integrated FlexFix® bike rack might not be enough to load all your outdoor gear. A kayak-come-surfboard carrier or this sporty Thule roof box should take care of that.

1.- 3. OPC Line Exterior Pack. Cool and sophisticated or just plain exiting? The OPC Line Exterior Pack includes special rear roof spoiler, rear skirt, side sills and front skirt for maximum visual impact.

4. Side steps. Stylish but functional, the side steps ease access to roof-carried loads, or just help you and especially the kids, get in and out. They look good too, in aluminium with stainless steel top and anti-slip rubber strips.



1. Cargo organizer, collapsible. This soft cargo tray is perfect for organizing and securing sports equipment, tools or miscellaneous items. When not in use, it can be folded flat for compact storage.

2. Fixed towing hitch. Robust and stable, the towing hitch for the Opel Mokka transforms its abilities. Boats, gliders, small caravans or other leisure items or mobile small business packages are all easily and quickly attached and safely secured. With 50-mm ball and 13-pin electric harness, it can be used with the factory-fitted Park Pilot.



3. Hard cargo tray. Tough conditions are a part of active life. The moulded hard tray ruggedly protects the interior from messy or dirty items. The 40-mm lip also guards against spillage and helps keep potentially damaging items in place.



Decal package. Stand out even further from an ever-growing crowd. Three-piece decals, perfectly tailored to the Opel Mokka, come in Black, White or Silver adding an eye-catching flash of contrast.

ENGINES AND TRANSMISSIONS.

Wherever you drive, in town traffic, under difficult seasonal conditions or just through a normal daily routine, the Opel Mokka offers the perfect choice for your specific needs. Lively petrol or diesel power, 4x4 All Wheel Drive or front-wheel drive, automatic or manual gear shift – there is a combination that fits exactly to your personal profile.



Opel's environmentally aware ecoFLEX Technology Pack significantly lowers fuel consumption, running costs and emissions without affecting performance. The pack includes the Start/Stop System that saves fuel by cutting the engine, for example at traffic lights.

CONSUMPTION AND EMISSIONS

| Engines | 1.6 ECOTEC® with Start/Stop System (85 kW/115 hp) | 1.4 Turbo ECOTEC® with Start/Stop System (103 kW/140 hp) | 1.4 Turbo ECOTEC® (103 kW/140 hp) | 1.4 Turbo ECOTEC® (103 kW/140 hp) | 1.4 Turbo ECOTEC® with Start/Stop System (103 kW/140 hp) | 1.7 CDTI ECOTEC® (96 kW/130 hp) | 1.7 CDTI ECOTEC® with Start/Stop System (96 kW/130 hp) | 1.7 CDTI ECOTEC® with Start/Stop System (96 kW/130 hp) |
|-------------------------------------------------------------|---------------------------------------------------------|----------------------------------------------------------------|--------------------------------------|--------------------------------------|----------------------------------------------------------------|------------------------------------|--------------------------------------------------------------|--------------------------------------------------------------|
| Emission standard | Euro 5 | Euro 5 | Euro 5 | Euro 5 | Euro 5 | Euro 5 | Euro 5 | Euro 5 |
| Transmission | MT-5 | MT-6 | MT-6 | AT-6 | MT-6 | AT-6 | MT-6 | MT-6 |
| Drive | FWD | FWD | FWD | FWD | AWD | FWD | FWD | AWD |
| Fuel | Petrol | Petrol | Petrol | Petrol | Petrol | Diesel | Diesel | Diesel |
| Fuel consumption in l/100 km¹ | | | | | | | | |
| Urban | 8,4 | 7,6 | 8,0 | 8,7 | 8,0 | 6,4 | 5,4 | 5,6 |
| Extra-urban | 5,4 | 5,1 | 5,2 | 5,7 | 5,5 | 4,6 | 4,0 | 4,5 |
| Combined | 6,5 | 6,0 | 6,3 | 6,8 | 6,4 | 5,3 | 4,5 | 4,9 |
| CO₂ emission combined in g/km¹ | 153 | 139 | 145 | 158 | 149 | 139 | 120 | 129 |

All information was accurate and up to date at the time of going to print. The company reserves the right to alter engine specifications at any time, which may influence the content of the shown data. Please consult your Opel dealer for the latest information. All figures quoted relate to the EU base model with standard equipment. Fuel consumption data and CO₂ emission data are determined according to regulation R (EC) No. 715/2007 (in the version respectively applicable), taking into consideration the vehicle weight in running order, as specified by the regulation. Additional equipment may lead to slightly higher results than the stated consumption and CO₂ figures. The figures for fuel consumption and CO₂ emissions do not relate to a specific vehicle and are not part of an offer. They are provided only for the purpose of comparison between different vehicle variants. Additional equipment may increase the weight of the vehicle when empty and in some cases the permissible axle weights as well as the permissible total weight of the vehicle and reduce the permissible towing weights. This may lead to a reduction in top speed and increased acceleration time. Driving performance figures assume a 75 kg driver plus a 125 kg load.

¹In acc. with regulation R (EC) No. 715/2007.

MT-5/MT-6 = 5-/6-speed manual transmission AT-6 = 6-speed automatic transmission

RIMS AND WHEELS. <

The Mokka is smooth under the bonnet, but the big wheels and strong styling are 100% SUV.



16" steel wheel. 6,5 J x 16", tyres 205/70 R16. (RRY, standard on Essentia.)



17" 5-spoke alloys in Sterling Silver. 6,5 J x 17", tyres 215/60 R17. (WQX, standard on Enjoy.)



18" 5-spoke alloys in Sterling Silver. 7 J x 18", tyres 215/55 R18. (RV6, standard on drive!, option on Enjoy.)



18" 10-spoke alloys in Sterling Silver. 7 J x 18", tyres 215/55 R18. (RV8, standard on Cosmo.)



19" 5-spoke alloys in Sterling Silver. 7 J x 19", tyres 225/45 R19. (RT7, option on Enjoy and Cosmo.)

TYRE LABELLING

| Dimension | 205/70 R16 | 215/60 R17 | 215/55 R18 | 225/45 R19 |
|-----------------------------|------------|------------|------------|------------|
| Tyre Fuel Efficiency Rating | C | B | E | E |
| Tyre Wet Grip Rating | B | B | B | A |
| Tyre Noise Rating (dB) | 71 | 71 | 71 | 71 |
| Sound Class | | | | |

► TRIMS AND SURFACES.

The seating position in the Mokka is higher than in a regular compact car and when you touch the seats and surfaces they feel good, too. Stylish and distinct, the whole Mokka décor is the perfect match for the bold design of the exterior.

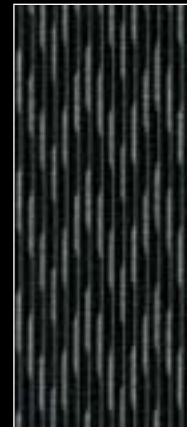


ESSENTIA, ENJOY & DRIVE: LINE DRIVE/ATLANTIS TRIM

Line Drive seat inserts in Jet Black.

Atlantis bolsters in Jet Black.

Décor mouldings in Liquid Platinum.





ENJOY & DRIVE! LEATHER/MORROCANA TRIM ^{1,2,3}

Front and rear outer seat inserts in leather, Jet Black. Other parts in Morrocana⁴, Jet Black.

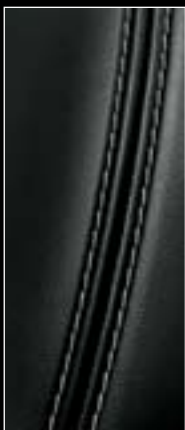
Décor mouldings in Liquid Platinum.

DRIVE! WEGA/ATLANTIS TRIM

Wega seat inserts in Jet Black.

Atlantis bolsters in Jet Black.

Décor mouldings in Liquid Platinum.



¹For Enjoy and drive! optionally available with AGR driver's seat. ²Optional. ³AGR seats. ⁴Artificial leather.



COSMO: LIGHTHOUSE/ATLANTIS & MORROCANA TRIM I

COSMO: LIGHTHOUSE/ATLANTIS & MORROCANA TRIM II

Lighthouse seat inserts in Dark Galvanized.

Atlantis & Morrocana³ bolsters in Dark Galvanized/ Jet Black.

Décor mouldings in Cool Tungsten Brush.

Lighthouse seat inserts in Saddle Up.

Atlantis & Morrocana³ bolsters in Saddle Up/Cocoa.

Décor mouldings in Sepia Bronze.





COSMO: LEATHER/MORROCANA TRIM I^{1,2}

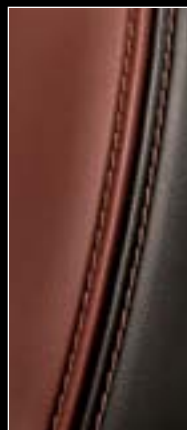
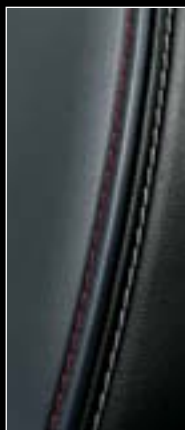
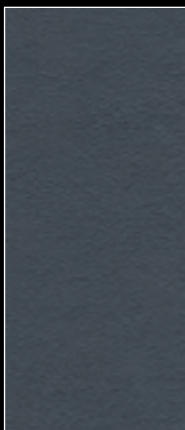
Front and rear outer seat inserts in leather, Dark Galvanized. Other parts in Morrocana³, Dark Galvanized/Jet Black.

Décor mouldings in Cool Tungsten Brush.

COSMO: LEATHER/MORROCANA TRIM II^{1,2}

Front and rear outer seat inserts in leather, Saddle Up. Other parts in Morrocana³, Saddle Up/Cocoa.

Décor mouldings in Sepia Bronze.



¹Optional. ²AGR seats. ³Artificial leather.

PAINTS AND COLOURS.

If you like dirt on your car or prefer the Sunday morning polish, the colours we offer will go well with both. The Mokka comes in a range of body colours that suit whatever you like to do.



Summit White

Royal Blue

Flame Red

Magma Red

Sovereign Silver

SOLID

BRILLIANT

TWO-COAT METALLIC¹

TWO-COAT METALLIC¹

Carbon Flash

Boracay Blue

Velvet Red

Satin Steel Grey

Orange Rock

Deep Espresso Brown

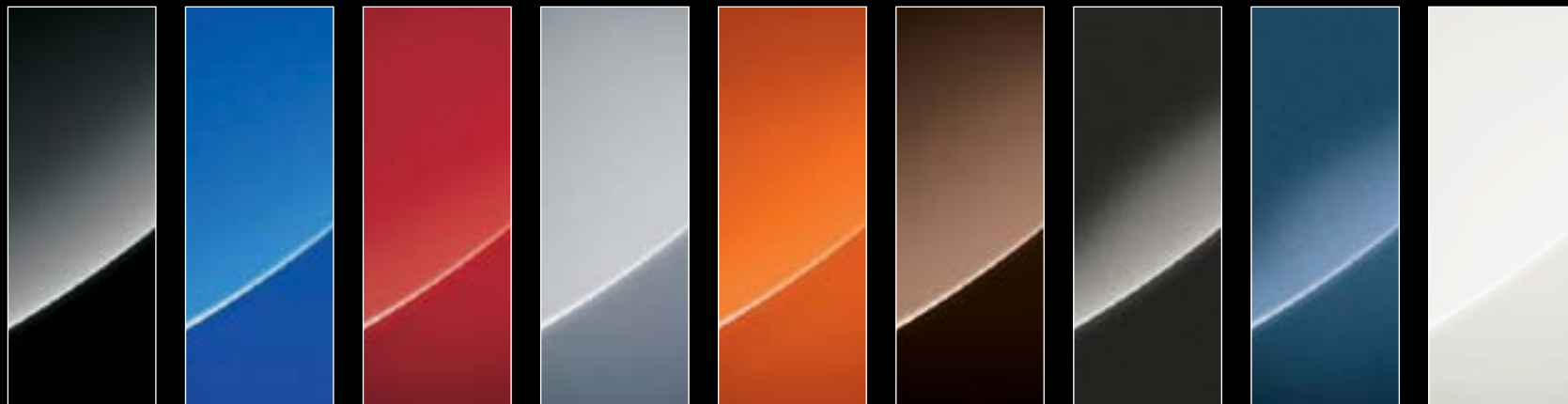
TWO-COAT PEARL-EFFECT¹

Asteroid Grey

Dark Sea Blue

THREE-COAT PEARL-EFFECT¹

Snow Flake White



| | ESSENTIA | ENJOY | DRIVE! | | | | COSMO | | | |
|--------------------------------------------------------|--------------------------------------|---------------------------------------------------|--------------------------------------------------------------------------------|----------------------------|---------------------------------------------------|--------------------------------------------------------------------------------|------------------------------------------------------------------------------------------|---------------------------------------------------------------------------------|----------------------------------------------------------------------------------------------------|-------------------------------------------------------------------------------------------|
| Trims | | | | | | | | | | |
| | Line Drive/ Atlantis Jet Black | Line Drive/ Atlantis ² Jet Black | Leather ² / Morrocana ⁴ I ^{1,5} Jet Black | Wega/Atlantis Jet Black | Line Drive/ Atlantis ² Jet Black | Leather ² / Morrocana ⁴ I ^{1,5} Jet Black | Lighthouse/ Atlantis & Morro- cana ⁴ I Dark Galvanized/ Jet Black | Lighthouse/ Atlantis & Morro- cana ⁴ II Saddle Up/ Cocoa | Leather ² / Morrocana ⁴ I ^{1,5} Dark Galvanized/ Jet Black | Leather ² / Morrocana ⁴ II ^{1,5} Saddle Up/ Cocoa |
| Décor mouldings | | | | | | | | | | |
| Liquid Platinum | • | • | • | • | • | • | – | – | – | – |
| Cool Tungsten Brush | – | – | – | – | – | – | • | – | • | – |
| Sepia Bronze | – | – | – | – | – | – | – | • | – | • |
| Solid body colours | | | | | | | | | | |
| Summit White | • | • | • | • | • | • | • | • | • | • |
| Royal Blue | • | • | • | • | • | • | • | – | • | – |
| Flame Red | • | • | • | • | • | • | • | – | • | – |
| Brilliant body colour¹ | | | | | | | | | | |
| Magma Red | • | • | • | • | • | • | • | – | • | – |
| Two-coat metallic body colours¹ | | | | | | | | | | |
| Sovereign Silver | • | • | • | • | • | • | • | • | • | • |
| Carbon Flash | • | • | • | • | • | • | • | • | • | • |
| Boracay Blue | • | • | • | • | • | • | • | – | • | – |
| Velvet Red | • | • | • | • | • | • | • | – | • | – |
| Satin Steel Grey | • | • | • | • | • | • | • | • | • | • |
| Orange Rock | • | • | • | • | • | • | • | • | • | • |
| Deep Espresso Brown | • | • | • | • | • | • | • | • | • | • |
| Two-coat pearl-effect body colours¹ | | | | | | | | | | |
| Asteroid Grey | • | • | • | • | • | • | • | • | • | • |
| Dark Sea Blue | • | • | • | • | • | • | • | – | • | – |
| Three-coat pearl-effect body colour¹ | | | | | | | | | | |
| Snow Flake White | • | • | • | • | • | • | • | • | • | • |

• = available – = not available

¹Optional. ²Optionally available with AGR driver's seat. ³Front and rear outer seat inserts in leather, other parts in Morrocana. ⁴Artificial leather. ⁵AGR seats.

➤ OPEL FOR LIFE.

Every Opel is designed and built to perform day in and day out. But like any piece of precision engineering, it performs best when it's cared for by people who really know what they're doing.

Throughout Europe, more than 6.000 Opel repair shops are ready to deliver professional and punctual service. As you'd expect, they'll repair your vehicle to the highest standards. As you might not expect, they'll tell you exactly what's been done and why, and they'll give you a clear and concise overview of any costs. To find your nearest authorized repairer, go to www.opel.com or call the Opel service hotline:

XXX-XXX-XXX-XXX, Monday to XXday, X a.m. to XX p.m.

Please fill in your local specifications.

Opel Roadside Assistance. This mobility service is free of charge for all new Opel vehicles for one year after they were first registered or delivered to the customer by the distributor, depending on which date comes first. No matter where you are, Opel Roadside Assistance is there to help. In more than 40 European countries, round the clock. Offering services such as breakdown assistance, towing, a hire car, hotel accommodation or the organization of onward transportation, e.g. via rail or air (please see programme conditions). Your distributor or authorized repairer will be happy to offer an extension at your annual service.



www.opel.com

Some illustrations in this brochure contain special equipment not included in standard delivery. The information contained in this brochure was accurate at the time of going to press. We reserve the right to make changes in design and equipment. The colours printed in the brochure only approximate actual colours. Illustrated optional equipment is available at extra charge. Availability, technical features and equipment provided on our vehicles can vary outside of the Federal Republic of Germany. Information about Design for Recycling, take-back locations for End of Life Vehicles (ELVs) and the recycling of ELVs can be found on the Internet page www.opel.com. For precise information on the equipment provided on our vehicles, please contact your local Opel partner.

ADAM OPEL AG, Rüsselsheim

Edition 02/14



PEFC certified

This brochure is from sustainably managed forest and controlled sources.

www.pefc.org

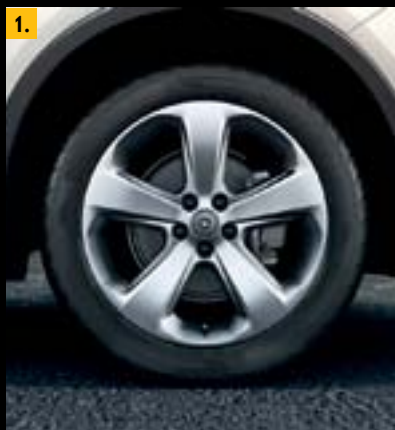
DRIVE!

The Mokka drive! is a special, limited edition to let you fully indulge yourself. So don't hold back when your emotions and expectations shift up a gear as you discover the unique Wega/Atlantis interior trim. Just take a look at the outside. The Mokka drive! was designed to deliver top value with great looks. The superb alloy wheels add even more go-anywhere chic to the chunky good looks. Then there is the badge. drive! It is a statement of how you are, where you are going. It also reminds you every time you see it what a great decision you made.

please adapt acc. your local offer concerning drive! option packs (local content), badge and wheels

1. Special alloys. 18" 5-spoke-design dedicated alloy wheels set the Mokka drive! perfectly on your chosen path.

2. Special interior. Settle in for a long, comfortable and enjoyable partnership with the exclusive charm of Wega/Atlantis trim fabric or choose the optional super-supportive AGR-certified front seats in fabric or leather.



2.





ENGINES AND TRANSMISSIONS.

Wherever you drive, in town traffic, under difficult seasonal conditions or just through a normal daily routine, the Opel Mokka offers the perfect choice for your specific needs. Lively petrol, diesel or combined petrol and LPG power, 4x4 All Wheel Drive or front-wheel drive, automatic or manual gear shift – there is a combination that fits exactly to your personal profile.



Opel's environmentally aware ecoFLEX Technology Pack significantly lowers fuel consumption, running costs and emissions without affecting performance. The pack includes the Start/Stop System that saves fuel by cutting the engine, for example at traffic lights.

CONSUMPTION AND EMISSIONS

| Engines | 1.6 ECOTEC® with Start/Stop System (85 kW/115 hp) | 1.4 Turbo ECOTEC® with Start/Stop System (103 kW/140 hp) | 1.4 Turbo ECOTEC® (103 kW/140 hp) | 1.4 Turbo ECOTEC® (103 kW/140 hp) | 1.4 Turbo ECOTEC® with Start/Stop System (103 kW/140 hp) | 1.4 Turbo LPG ECOTEC® (103 kW/140 hp) | 1.7 CDTI ECOTEC® (96 kW/130 hp) | 1.7 CDTI ECOTEC® with Start/Stop System (96 kW/130 hp) | 1.7 CDTI ECOTEC® with Start/Stop System (96 kW/130 hp) |
|-----------------------------------------------------------------|---------------------------------------------------------|----------------------------------------------------------------|-----------------------------------------|-----------------------------------------|----------------------------------------------------------------|---------------------------------------------|------------------------------------|--------------------------------------------------------------|--------------------------------------------------------------|
| Emission standard | Euro 5 | Euro 5 | Euro 5 | Euro 5 | Euro 5 | Euro 6 | Euro 5 | Euro 5 | Euro 5 |
| Transmission | MT-5 | MT-6 | MT-6 | AT-6 | MT-6 | MT-6 | AT-6 | MT-6 | MT-6 |
| Drive | FWD | FWD | FWD | FWD | AWD | FWD | FWD | FWD | AWD |
| Fuel | Petrol | Petrol | Petrol | Petrol | Petrol | LPG/Petrol | Diesel | Diesel | Diesel |
| Fuel consumption in l/100 km¹ | | | | | | | | | |
| Urban | 8,4 | 7,6 | 8,0 | 8,7 | 8,0 | 9,8/7,6 | 6,4 | 5,4 | 5,6 |
| Extra-urban | 5,4 | 5,1 | 5,2 | 5,7 | 5,5 | 6,4/5,2 | 4,6 | 4,0 | 4,5 |
| Combined | 6,5 | 6,0 | 6,3 | 6,8 | 6,4 | 7,7/6,1 | 5,3 | 4,5 | 4,9 |
| CO₂ emission combined in g/km¹ | 153 | 139 | 145 | 158 | 149 | 124/142 | 139 | 120 | 129 |

All information was accurate and up to date at the time of going to print. The company reserves the right to alter engine specifications at any time, which may influence the content of the shown data. Please consult your Opel dealer for the latest information. All figures quoted relate to the EU base model with standard equipment. Fuel consumption data and CO₂ emission data are determined according to regulation R (EC) No. 715/2007 (in the version respectively applicable), taking into consideration the vehicle weight in running order, as specified by the regulation. Additional equipment may lead to slightly higher results than the stated consumption and CO₂ figures. The figures for fuel consumption and CO₂ emissions do not relate to a specific vehicle and are not part of an offer. They are provided only for the purpose of comparison between different vehicle variants. Additional equipment may increase the weight of the vehicle when empty and in some cases the permissible axle weights as well as the permissible total weight of the vehicle and reduce the permissible towing weights. This may lead to a reduction in top speed and increased acceleration time. Driving performance figures assume a 75 kg driver plus a 125 kg load.

¹In acc. with regulation R (EC) No. 715/2007.

MT-5/MT-6 = 5-/6-speed manual transmission AT-6 = 6-speed automatic transmission

RIMS AND WHEELS. <

The Mokka is smooth under the bonnet, but the big wheels and strong styling are 100% SUV.



16" steel wheel. 6,5J x 16", tyres 205/70 R16. (RRY, standard on Essentia.)



17" 5-spoke alloys in Sterling Silver. 6,5 J x 17", tyres 215/60 R17. (WQX, standard on Enjoy.)



18" 5-spoke alloys in Sterling Silver. 7 J x 18", tyres 215/55 R18. (RV6, standard on drive!, option on Enjoy.)



18" 10-spoke alloys in Sterling Silver. 7 J x 18", tyres 215/55 R18. (RV8, standard on Cosmo.)



19" 5-spoke alloys in Sterling Silver. 7 J x 19", tyres 225/45 R19. (RT7, option on Enjoy and Cosmo.)

TYRE LABELLING

| Dimension | 205/70 R16 | 215/60 R17 | 215/55 R18 | 225/45 R19 |
|-----------------------------|------------|------------|------------|------------|
| Tyre Fuel Efficiency Rating | C | B | E | E |
| Tyre Wet Grip Rating | B | B | B | A |
| Tyre Noise Rating (dB) | 71 | 71 | 71 | 71 |
| Sound Class | | | | |

➤ OPEL SERVICE.

Every Opel is designed and built to perform day in and day out. But like any piece of precision engineering, it performs best when it's cared for by people who really know what they're doing.

Europe-wide Customer Service.

Throughout Europe, more than 6,000 Opel repair workshops are ready to provide professional and punctual service. As you'd expect, they'll repair your vehicle to the highest standards. More unusually, perhaps, they'll tell you exactly what's been done and why, and they will show any costs involved clearly and concisely.

Opel Roadside Assistance.

This mobility service is valid and free of charge for all new Opel vehicles during the first year after the date on which they were first registered or delivered to the customer by the distributor, depending on which date comes first. No matter where you are, the Opel Roadside Assistance is there to help. In more than 40 European

countries – round the clock. Offering services such as breakdown assistance, towing services, rental car, hotel accommodation or the organization of onward transportation, e.g. via rail or air (please see programme conditions). Your distributor or authorized repairer will be happy to offer an extension at your annual service.

Financing Offers.

Opel Finance offers you interesting tailor-made financing models. You alone decide how you would like to pay for your vehicle, in accordance with your particular needs.

Leasing Offers.

You can also lease your Opel, for example through Opel Leasing. Leasing terms can be adapted to fit your business requirements and capabilities. Also, Master Lease offers you a complete

fleet management service from one source.

Insurance Service.

Our Opel Insurance Services rounds off the Opel Service Package. We offer Opel customers all types of automotive insurance.

Opel Rent Service.

Opel Rent will keep you on the road if your vehicle is out of service.

New Vehicle Warranty.

2-year new vehicle warranty. This warranty applies to any new Opel car for a period of 24 months without any mileage restrictions, as from the day on which it was either registered for the first time or delivered to the customer by the dealer, depending on which date comes first.

Please adapt Opel Financial Services nomenclature locally.

Extended Vehicle Warranty.

This repair cost insurance enables you to extend the warranty on your new vehicle to a maximum of 10 years.

12-year Anti-Perforation Warranty.

Opel provides you with a reliable long-term warranty against perforation, provided you have your vehicle serviced and all necessary inspections performed according to the service booklet.

3-year Warranty for Opel Batteries.

With a 3-year warranty for service-installed Opel original batteries your starting problems are over – even in the coldest winter.

Parts and Accessories Service.

Opel parts and accessories are available at

your local Opel Shop, where you'll find everything to make your vehicle more comfortable or to meet your individual needs, as well as expert advice.

Opel on the Internet. Need instant information? At www.opel.com you can access a wealth of information on all Opel cars, services and accessories. Get online for Opel news and product updates.

Recycling. Information about Design for Recycling, Take-Back points for End of Life Vehicles (ELVs) and the recycling of ELVs can be found on the Internet page www.opel.com

In case of any questions, please ask your Opel partner. More information can be found under www.opel.com

Please fill in your local specifications.

