

OPEL MOVANO

People carriers







Opel Movano Combi & Bus. For your most precious cargoes.

People. Big and small, young and old, sports teams, hotel guests, students, project teams – whoever they are, the Opel Movano people carriers provide comfortable and practical transport for everyone on board.



A delight to drive.

How you sit is just as important as where you sit. Whether you drive yourself, or others drive for you, it's vital that a day at the steering wheel does not result in a week of back problems. The cabin of Opel Movano, from the choice of seats to the ergonomically located gear shifter and tiltable steering wheel, has been designed to keep the driver, as well as the vehicle, on the road day after day.



Instrument panel. Clear, easy-to-read instruments, ideally and ergonomically placed, reduce driver fatigue and increase operating safety.



Dash-top compartment. Just one of the many convenient storage solutions located within easy reach of the driver (optional).



Safety assured.

When carrying people, their safety is always a priority. That's why, besides the standard ESP®, ABS, driver's airbag and standard three-point seat belts for all occupants, a front passenger airbag is also available. Additional safety and protection is also available through the option of automatic headlight and windscreen wiper systems, which react instantly to changing light and weather conditions. And every Opel Movano offers excellent crosswind stability and a vision-optimized view of the road.

Lane Departure Warning and High Beam Assist. These smart systems warn you if you leave your lane unintentionally and switch from low to high beam if the traffic situation allows.

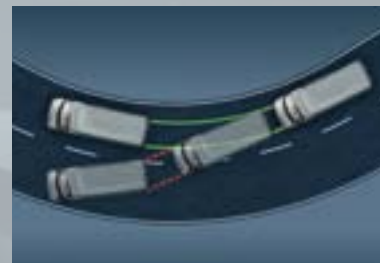


Static Cornering Light. Simply activated by the indicator switch at low speeds, throws light exactly where it's needed. (Optional.)



Electronic Stability Program (ESP®).

ESP® massively increases stability and safety. It is standard on every Movano and includes Hill Start Assist, Trailer Stability Program and Enhanced Traction Mode.





An all-round performer. The Combi.

Sometimes your priority is carrying passengers, sometimes it's load space. But most of the time you need both. With its easily variable passenger/load capacity the Opel Movano Combi is the ideal solution. Available as 6- or 9-seater, in either L1H1 or L2H2 body styles, it provides comfortable transport for passengers and all they want to take with them.





All aboard! The Bus.

The Opel Movano Bus provides generous accommodation for 16 or 17 people. The purpose-built passenger saloon has offset double seats on one side of the aisle and single seats on the other, for optimal access and comfort. The fully trimmed interior, with high-mounted luggage racks, saloon lighting, and optional adjustable air vents, has been designed to make even long journeys a pleasure, whilst the wide-opening side door with standard electrically operated step makes for easy passenger access. Power operation is standard for the retractable access step, optional for the large sliding door.

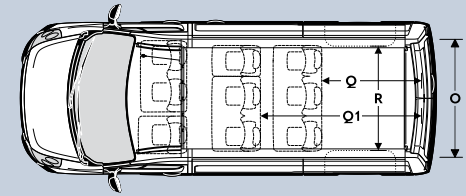
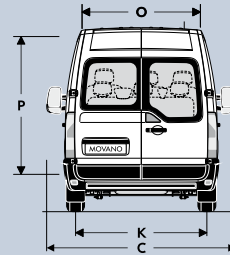
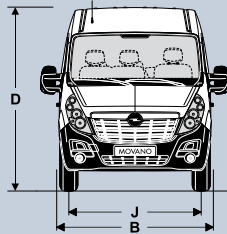
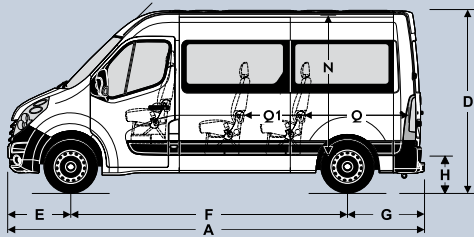


Combi: versions and dimensions



Key	Combi	
	L1H1	L2H2
A Overall length	5,048	5,548
B Overall width without mirrors	2,070	2,070
C Overall width including mirrors	2,470	2,470
D Overall height	2,287	2,495 (3.3 t)/2,482 (3.5 t)
E Front overhang	842	842
F Wheelbase	3,182	3,682
G Rear overhang	1,024	1,024
H Sill height	564	562
J Front track	1,750	1,750
K Rear track	1,730	1,730
N Body interior height	1,650	1,850
O Width rear door	1,577	1,577
P Height rear door	1,627	1,820
Q Length of cargo space (3rd seat row)	948	1,448
Q1 Length of cargo space (2nd seat row)	1,757	2,257
R Width between wheelhouses	1,380	1,380

All dimensions in mm



Combi: weights

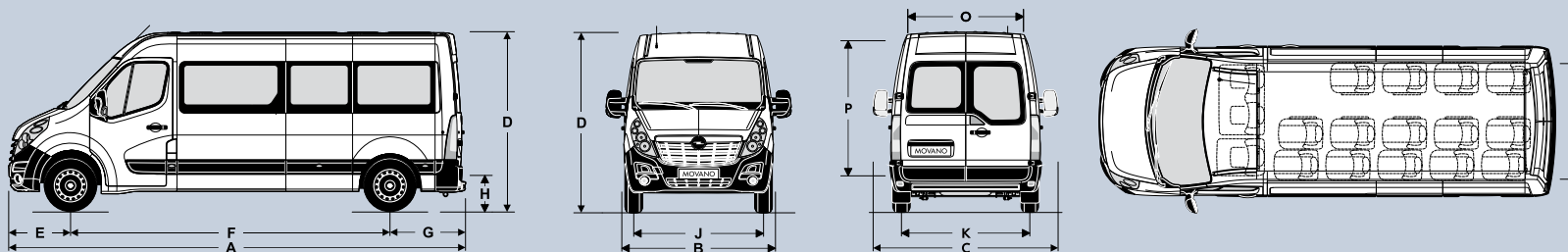
Opel Movano Combi body versions	Number of seats	Gross vehicle weight (in kg)	Kerb weight ¹ (in kg)	Payload, max. (in kg)	Front axle capacity (in kg)	Rear axle capacity (in kg)	Trailer capacity, unbraked (in kg)	Trailer capacity, braked (in kg)	Gross train weight (in kg)	Turning circle (kerb to kerb/wall to wall) (in m)
L1H1 FWD	6	2,980	1,987	993	1,550	1,650	750	2,500	5,480	12.0/12.5
L1H1 FWD	9	2,980	2,053	927	1,550	1,650	750	2,500	5,480	12.0/12.5
L1H1 FWD	6	3,300	2,002	1,298	1,850	2,100	750	2,500	5,800	12.0/12.5
L1H1 FWD	9	3,300	2,068	1,232	1,850	2,100	750	2,500	5,800	12.0/12.5
L2H2 FWD	6	3,300	2,070	1,230	1,650	1,900	750	2,500	5,800	13.6/14.1
L2H2 FWD	9	3,300	2,135	1,165	1,650	1,900	750	2,500	5,800	13.6/14.1
L2H2 FWD	6	3,500	2,084	1,416	1,850	2,100	750	2,500	6,000	13.6/14.1
L2H2 FWD	9	3,500	2,149	1,351	1,850	2,100	750	2,500	6,000	13.6/14.1

Bus: versions and dimensions



Key		Bus L3H2
A	Overall length	6,198
B	Overall width without mirrors	2,070
C	Overall width including mirrors	2,470
D	Overall height	2,488
E	Front overhang	842
F	Wheelbase	4,332
G	Rear overhang	1,024
H	Sill height	557
J	Front track	1,750
K	Rear track	1,730
O	Width rear door	1,577
P	Height rear door	1,820

All dimensions in mm



Bus: weights

Opel Movano Bus body versions	Number of seats	Gross vehicle weight (in kg)	Kerb weight ¹ (in kg)	Payload, max. (in kg)	Front axle capacity (in kg)	Rear axle capacity (in kg)	Turning circle (kerb to kerb/ wall to wall) (in m)
L3H2 FWD	16	3,870	2,493	1,377	1,850	2,100	15.7/16.2
L3H2 FWD	17	3,870	2,493	1,377	1,850	2,100	15.7/16.2

L: length, 3 available:

- 1 = standard
- 2 = medium
- 3 = long

H: roof height, 2 available:

- 1 = standard
- 2 = medium

FWD = front-wheel drive

¹ Minimum vehicle weight according to type approval, including all fluids, tool, and a 90 % fuel load. Excludes the weight of the driver and deletable options. Final weight may vary according to the specification of the vehicle, e.g. options, delete options, and accessories.

Equipment & options.

Infotainment. Staying in touch, knowing exactly where to go, how to get there, and how the traffic is moving gives you a real advantage in business. Also, people work best in relaxed conditions. For these reasons the infotainment packages in the Opel Movano are tailor-made for outstanding performance. There are three packages available, all have been exactly developed especially for the Opel Movano.



Navi 50 IntelliLink. This navigation system offers excellent value for money. The 7" colour touch screen is positioned in optimum view on the upper centre console. Dynamic navigation in 2-D or 3-D bird's eye view includes actual TMC traffic messages. The maps can be updated via USB.

Other features include voice control for connected smartphones, steering column controls, USB and aux-in as well as Bluetooth® for hands-free phone and audio streaming. The free 'aha' app on connected smartphones allows access to Internet radio and social media via the touch screen. Digital radio DAB+ is optionally available.¹

¹The compatibility and certain functionalities may differ depending on the type of device and version of operating system.



CD 16 BT USB. The steering column-controlled CD radio offers universal connectivity via aux-in, Bluetooth® and 2 USB ports. Output 2 x 15 W (Bus) or 4 x 15 W (Combi), integrated display.



Bluetooth® connectivity. Easy to operate and virtually universal, Bluetooth® makes mobile phone communication hands-free and safe.



Steering column radio controls. All major radio functions such as volume, input selection, and radio station changes can be made without the driver needing to move hands from the steering wheel.

R 15 BT USB. Tuner with integrated display, which also displays the time. With RDS EON, Bluetooth®, USB and aux-in. 2 x 15 W (Bus) or 4 x 15 W (Combi).

Auxiliary input (aux-in) and USB connection. All Opel Movano infotainment systems feature auxiliary input jacks and USB connection.

Digital radio. All European digital radio formats can be received with DAB/DAB+/DMB audio. Available as option in combination with CD 16 BT USB and Navi 50 IntelliLink.

Cockpit



Board computer. This provides information including fuel consumption, range, driving time, and distance covered.



Digital tachograph. Easily operated by the driver. Reliably records driving and rest time for assembling and analysing fleet management data. (Standard on Bus, optional on Combi.)

Fixed speed limiter. The Bus comes fitted with a speed limiter as standard, fixed at 100 km/h as mandated by law and cannot be deactivated. The optional speed limiter on the Combi is available with a choice of four predetermined speeds.

Comfort



Comfort driver's seat. Optionally available deep contoured seat, adjustable lumbar support and armrest, height-adjustable. Also available for co-driver.



Comfort seats. A seat angle of 19.5 degrees, hip-to-knee room of 660 mm, and offset double seats for improved shoulderroom all go together to deliver passenger comfort. Every seat has 3-point safety belt and head restraint. (Standard on Bus.)



Saloon lighting. Individual lighting for each seat improves travel comfort and convenience for passengers, whilst footwell lighting allows passengers to easily find their seats in the dark. (Standard on Bus.)



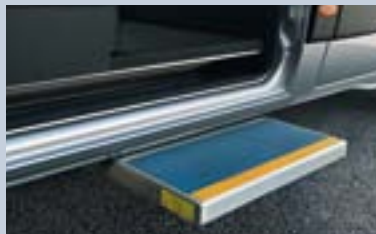
Air conditioning. Staying cool is part of travelling well. Available as part of the Climate Pack, it features also a pollen filter.



Rear step. An optional rear step, incorporated within the rear bumper, aids access into the cargo area of the Combi.



Rear air conditioning on Combi. The separate rear air conditioning with overhead outlets ensures climate comfort for the passengers in the second and third row. (Optional.)



Retracting side step. The electrically retractable side step, together with a handrail inside, allows easy access and exit for passengers. When the side door is opened the step deploys automatically and retracts when the door is closed. (Standard on Bus.)

Rear air conditioning on Bus. As in air travel, rear passengers have their own ventilation nozzles in the overhead luggage shelf to adjust the air direction and quantity to their preferences. (Optional.)

Opening side windows. Optional sliding panels in the side windows provide extra fresh air ventilation.

Rear heating. The rear heating system has two powerful 4-kW heaters operating through the underseat ventilation system. It can be programmed to pre-heat the interior. (Optional on Bus.)

Tinted glass. Standard tinted rear glass increases passenger comfort and privacy while protecting against strong sunlight.

Versatility



Coat racks. The overhead-mounted coat racks allow for storage of jackets and smaller items. (Standard on Bus.)

Electric sliding door. Remote-controlled by the driver, with emergency opening from outside the electric sliding door is perfect for easy loading and passenger access. (Optional on Bus.)

Removable rear seats. To provide extra space for luggage etc., the two rear benches can be removed from the Combi without using tools. For the Bus the two rear rows of seats can be removed. (Option.)

Full-size spare wheel. The Combi and the 16-seater Bus are equipped with a full-size spare wheel, located under the vehicle floor. The 17-seater Bus comes with a space-saving tyre repair kit.



Load restraint eyes (Combi). Convenient and practical lashing eyes in the luggage area keep loads firmly in place.

Safety and security



Park Pilot. This gives an audible warning to avoid accidental damage when reversing. (Optional.)



Vehicle security system. Remote-controlled anti-theft alarm that uses volumetric movement sensors to protect the whole vehicle (engine compartment, cabin, and passenger compartment) against intrusion. (Optional.)

Wide-view mirrors. Dual lens exterior rear-view mirrors minimize blind spot dangers while driving. A large convex mirror mounted on the front passenger sunblind offers extra blind spot coverage while reversing in tight spaces.

Clever packs. All important features for improved view and safer ride are combined in these packs. The Lighting Pack includes automatic wipers and lights, front foglights and Static Cornering Light. The Advanced Safety Assist Pack (standard on Bus, optional on Combi) comprises High Beam Assist, Lane Departure Warning, front foglights, automatic windscreen wipers and on-board computer.

Exterior



Front foglights. These are recessed against accidental damage and optimally positioned.



Splash guards. Tough thermoplastic, specifically designed to protect the bodywork from damage resulting from stone chips, splashes, grit, etc.



Pulse Charcoal

¹ Only available on Combi.



Vinyl Charcoal¹



Arctic White



North Sea Blue



Signal Blue



Poppy Red



Mandarin Orange



Saffron Yellow



Ink Blue



Halo Silver¹



Ambient Blue¹



Pearl Black¹

¹Metallic.





Performance.

The high-tech Movano Combi and Bus BiTurbo diesel engines stand right out front when it comes to universal transport efficiency with smooth, superior performance and exceptionally low consumption and emissions.

BiTurbo technology combines the benefits of a small turbocharger – fast response and high torque at low revs – with the high power and torque output of a large turbocharger at high revs. Bluelnjection technology, Start/Stop System and ECO mode ensure clean performance with outstanding efficiency.

Emission and fuel-saving technologies.

The Start/Stop System cuts emissions whenever you have to stop at a red light or in a jam, resulting in considerable savings in towns and heavy traffic conditions. Push-button activated ECO mode optimizes energy management for low consumption and indicates when it's time to shift up to save fuel.

BlueInjection allows powerful diesel engines to comply with strict Euro 6 emission standards. To reduce harmful nitrogen oxides (NO_x) emissions, it uses the additive AdBlue[®], which reacts with NO_x to produce harmless nitrogen and water. Top-ups for AdBlue[®] are quick, simple and seldom – at intervals about 10,000 kilometres for the average driver.



Combi (M1) engines	2.3 CDTi BiTurbo with Start/Stop System (107 kW/145 hp)	2.3 CDTi BiTurbo with Start/Stop System (125 kW/170 hp)
Displacement (cm ³)	2,298	2,298
Max. output (kW/hp) at rpm	107/145 3,500	125/170 3,500
Max. torque (Nm) at rpm	360 1,500	380 1,500
Transmission	6-speed manual	6-speed manual
Emission standard	Euro 6	Euro 6
Table shows scale of consumption and emission data depending on variants and tyres. Please contact your Opel dealer or refer to price list for specific information.		
Fuel	Diesel	Diesel
Fuel consumption (l/100 km) ¹		
Urban	7.5–7.4	7.5–7.4
Extra-urban	6.1–5.8	6.1–5.8
Combined	6.6–6.3	6.6–6.3
CO ₂ emission combined (g/km) ¹	197–193	197–193



Bus (M2) engines	2.3 CDTi BiTurbo with Start/Stop System (107 kW/145 hp)	2.3 CDTi BiTurbo with Start/Stop System (120 kW/163 hp)
Displacement (cm ³)	2,298	2,298
Max. output (kW/hp) at rpm	107/145 3,500	120/163 3,500
Max. torque (Nm) at rpm	360 1,500	380 1,500
Transmission	6-speed manual	6-speed manual
Emission standard	Euro 6	Euro 6

M1 = EU vehicle classification for vehicles for passenger carriage only (max. 9 seats) M2 = EU vehicle classification for vehicles for passenger carriage only (max. 17 seats) and a maximum weight not exceeding 5 tonnes

¹ In acc. with regulations R (EC) No. 715/2007 and R (EC) No. 692/2008 (in the versions respectively applicable).

All information was accurate and up to date at the time of going to print. The company reserves the right to alter engine specifications at any time, which may influence the content of the shown data. Please consult your Opel dealer for the latest information. M1: all figures quoted relate to the EU base model with standard equipment. Fuel consumption data and CO₂ emission data are determined according to regulations R (EC) No. 715/2007 and R (EC) No. 692/2008 (in the versions respectively applicable), taking into consideration the vehicle weight in running order, as specified by the regulations. Additional equipment and factory-fitted options may lead to slightly higher results than the stated consumption and CO₂ figures. The figures for fuel consumption and CO₂ emissions do not relate to a specific vehicle and are not part of an offer. They are provided only for the purpose of comparison between different vehicles but may differ from the actual fuel consumption achieved in real-world driving conditions which are greatly influenced by driving style and operating conditions. Additional equipment and factory-fitted options may increase the weight of the vehicle when empty and in some cases the permissible axle weights as well as the permissible total weight of the vehicle and reduce the permissible towing weights. This may lead to a reduction in top speed and increased acceleration time. Driving performance figures assume a 75 kg driver plus a 125 kg load.

Tyre labelling

Dimension	215/65 R 16	225/65 R 16
Tyre Fuel Efficiency Rating	B	E–B
Tyre Wet Grip Rating	B	C–B
Tyre Noise Rating (dB)	71	73–70
Sound Class		

Service & warranties.

All Opel Movano variants are built on the premise that your commercial vehicles should be out there working for your business and clients, not standing around in workshops. To this end, they have been engineered to provide years of reliable service, with the minimum of necessary servicing, and are covered by a 6-year anti-perforation warranty.

Service intervals are scheduled every 40,000 km¹ for the Combi and 30,000 km¹ for the Bus. Should unscheduled maintenance be required, a Europe-wide network of 3,200 specialist service points is there to get your Opel Movano back on the road with minimum downtime, or provide a temporary replacement vehicle.

For full details of leasing, maintenance, or fleet customer services, please contact your specialist Opel commercial vehicle dealer.

¹ Or 2 years.





Superior Service.

myOpel is an outstanding web portal for maintenance, booking appointments and more. Access it online, and download the optional app.

Copy for countries that **DO** offer the app.

myOpel is an outstanding web portal for maintenance, updates and more. Sign up online for these myOpel benefits:

Copy for countries that **DO NOT** offer the app.

- // Service offers tailor-made for you and your car
- // Reminders whenever it's time for a service
- // Service requests and easy booking online
- // A dealer locator to find your nearest Opel retailer
- // **Online access to your full service history**

NOTE TO COUNTRIES: If your country does not offer the full service history, please delete this bullet.

Register for myOpel with these easy steps:

1. Go to www.myOpel.com
2. Register for free and confirm your account
3. **Download the optional myOpel app**

NOTE TO COUNTRIES: If your country does not offer the app, please delete bullet number 3.

Opel Service.

Europe-wide Customer Service.

More than 3,200 Opel repair workshops including over 2,000 commercial vehicle specialized service centres throughout Europe are prepared to provide individual, professional, and punctual service. Good service also includes explaining to you in detail what has been repaired and why, and where this is shown on the invoice.

OPEL RoadPlus.

Maximum uptime.

Your vehicle will be immediately diagnosed without appointment should you need to visit one of our Opel commercial vehicle repair workshops. Smaller repairs are done while you wait and standard wear-and-tear parts will be replaced within a day. Should the repair take more than 3 hours, an alternative transport solution shall be made available to you free of charge within the first 3 years of ownership of your new vehicle.

Customer Information Centre.

Your Opel partner is at your service for all questions and special requests. For any additional information on your van, you may also contact our Opel Customer Information Centre, tel. (add: local number).

Opel Roadside Assistance.

This mobility service is valid and free of charge for all new Opel vehicles during the first year after the date on which they were first registered or delivered to the customer by the distributor, depending on which date comes first. No matter where you are, the Opel Roadside Assistance is there to help. In more than 40 European countries – round the clock. Offering services such as breakdown assistance, towing services, rental car, hotel accommodation, or the organization of onward transportation, e.g. via rail or air (please see programme conditions). Your distributor or authorized repairer will be happy to offer an extension at your annual service.

Financing Offers.

Opel Finance offers you interesting tailor-made financing models. You alone decide how you would like to pay for your vehicle, in accordance with your particular needs.

Leasing Offers.

You can also lease your Opel, e.g. through Opel Leasing. Leasing terms can be adapted to fit your business requirements and capabilities.

Insurance Service.

Our Opel Insurance Services round off the Opel Service Package. We offer Opel customers all types of automotive insurance.

Opel Rent Service.

Opel Rent will keep you on the road if your vehicle is out of service.

New Vehicle Warranty.

This warranty applies to all new Opel commercial vehicles for a period of 24 months without any mileage restrictions, as from the day on which it was either registered for the first time or delivered to the customer by the Opel partner, depending on which date comes first.

Extended Vehicle Warranty.

This repair cost insurance enables you to extend the warranty on your new vehicle to a maximum of xx years.

Up to 6 year Anti-Perforation Warranty.

Opel provides you with a reliable long-term warranty against perforation according to the warranty conditions as described in the service booklet.

Parts and Accessories.

All items necessary to maintain your vehicle in perfect condition and to individualize it for your private and business needs are available at your Opel partner.


Recycling.

Information about Design for Recycling, Take-Back points for End of Life Vehicles (ELVs), and the recycling of ELVs can be found on the Internet at www.opel.com

In case of any questions, please ask your Opel partner. More information can be found under www.opel.com

www.opel.com

Some illustrations in this brochure contain special equipment not included in standard delivery. The information contained in this brochure was accurate at the time of going to press. We reserve the right to make changes in design and equipment. The colours printed in the brochure only approximate actual colours. Illustrated optional equipment is available at extra charge. Availability, technical features, and equipment provided on our vehicles can vary outside of the Federal Republic of Germany. For precise information on the equipment provided on our vehicles, please contact your local Opel partner.

A photograph of a modern building with a large glass facade at night. The building's interior lights are visible through the glass, and the exterior is illuminated. Three business professionals (two men and one woman) are walking in front of the building. The man on the left is wearing a dark suit and a red tie, the man in the middle is wearing a light grey suit, and the woman on the right is wearing a white blouse and a dark skirt. They are all carrying briefcases or bags. The overall scene is professional and modern.

Opel Movano Combi & Bus. For your most precious cargoes.

People. Big and small, young and old, sports teams, hotel guests, students, project teams – whoever they are, the Opel Movano people carriers provide comfortable and practical transport for everyone on board.

