

KODIAQ



ŠKODA



THE KODIAQ – BREAKING NEW GROUND

As ŠKODA's first ever seven-seater SUV, the KODIAQ comes with more as standard. More opportunities to explore unknowns, escape the norm and banish boredom on exhilarating 4x4 family adventures. More ways to rediscover and reconnect with nature.

You'll also find more practical spaces, more inventive design touches and be more connected on the road than ever before. And the more you throw at the KODIAQ, the more fun you'll have.

So jump in and break free.



SEE THE KODIAQ IN ITS NATURAL HABITAT

On-road or off-road, family adventure or private escape, watch how the KODIAQ lets you forge your own path at: skoda.co.uk/models/kodiaq





Models shown are not UK specification.

DESIGNED TO MAKE A STATEMENT

The KODIAQ isn't just a car built to take on the toughest terrains with ease. Its tornado lines, precise edges and crystalline influences add to its distinguished style.



FRONT LIGHT SYSTEM

This adaptive system adjusts light intensity to match the conditions, providing a wider lighting field for city driving and a longer reach for motorways. When oncoming traffic is detected, it automatically adjusts to prevent dazzling others.



REAR LED LIGHTS

Designed to be seen in every sense, these rear LED lights feature ŠKODA's distinctive C-shape crystalline style with their prominent and eye-catching multi-faceted finish.



PANORAMIC SUNROOF

This electrically adjustable panoramic sunroof and blind provides extra sunlight and fresh air at the simple touch of a button.



WHEELS

Ranging from 17" to 19", a choice of alloy wheel options are available, giving you the opportunity to uniquely personalise the KODIAQ's distinctive exterior.

FIRST-CLASS TRAVEL FOR UP TO SEVEN PASSENGERS



With many clever features designed to make your life just a little easier, the only thing not packed into the KODIAQ's stylish interior are your passengers. Available with up to seven seats.



DIGITAL VOICE ENHANCEMENT

Particularly handy on noisy roads, this innovative feature transmits the voices of those in the front seats to rear seat occupants in real time through the infotainment system.



TRI-ZONE CLIMATE CONTROL

This intelligent system enables different temperatures to be set for the driver, co-driver and rear passengers. It's also fitted with a sun sensor and humidity sensor to reduce windscreen misting.



LED INTERIOR LIGHT PACK

Selecting the KODIAQ's LED ambient lighting is anything but a black and white decision. From the understated to the unapologetically bold, 10 colour options are available.



PERSONALISATION OPTIONS

The infotainment system enables different drivers to save their individual preferences, from seat positioning and driving mode to the choice of music on the radio.

CONNECTIVITY TO GO WHEREVER YOU GO

By enabling you to be fully online on the move, the KODIAQ helps you stay connected wherever your adventure takes you. Thanks to its smart assistance systems, you'll also know the best places to park, shortcuts to take and routes to avoid.



SMARTLINK+

SmartLink+ enables you to connect your smartphone through the infotainment system with Apple CarPlay™ and Android Auto™ as standard across the range.



NAVIGATION SYSTEM

The Columbus satellite navigation with 9.2" touchscreen display and integrated Wi-Fi will get you from A to B, but why stop there? With its Bluetooth®, SmartLink+ and Wi-Fi capability, it offers more connectivity on-the-go.



CANTON SOUND SYSTEM

Premium German sound engineering, tailor-made to your KODIAQ. The CANTON Sound System delivers powerful clarity from 10 speakers around the car.

STAY CONNECTED

The new ŠKODA Connect system turns the KODIAQ into a fully interconnected car. Infotainment Online provides satellite navigation, traffic reports and calendar updates.

With Proactive Services the car will contact your ŠKODA Retailer to arrange a service. Finally, Emergency Call will contact the emergency services in the event of an accident to get you the help you need.



AN INTERIOR FOR LOVERS OF WIDE OPEN SPACES

There's always room for more toys, more snacks and the occasional four-legged friend. After all, life's too short to let anything ever get in the way of quality family time away. Especially a lack of space.



JUMBO BOX

Equipped with cup holders and handy storage compartments, the Jumbo Box will store your gadgets, house keys and books.



SPACIOUS STORAGE

Several spacious storage compartments have been included in the interior to help you keep it looking its best. Some can also be air-conditioned, making it perfect for storing chilled refreshments.



The image shows the open trunk of a car, viewed from the rear passenger side. The trunk is empty, showing a dark grey carpeted floor and a dark grey plastic interior panel on the right side. The rear seats are folded down, and the trunk lid is open, revealing the interior of the trunk. The text "MORE ROOM TO PLEASE" is centered in the middle of the trunk. Below the text, there are two paragraphs of smaller text. The overall lighting is soft and even, highlighting the texture of the carpet and the plastic components.

MORE ROOM TO PLEASE

With one of the best luggage capacities in its class, you no longer need to compromise on what you pack.

With the rear seats folded (5 seat versions), there's a remarkable 2,065 litres of space available. That means ample room for everything that's important to you. The remote release button makes folding the rear seats easy.



DOOR EDGE PROTECTION

All side doors are fitted with plastic strips that eject upon opening and cover the edge of the door. Ideal when you're in a tight parking spot.

CLEVER DESIGN WITH A HUMAN TOUCH

At ŠKODA we believe the best ideas are those that make our lives simpler. That's why the KODIAQ is full of practical touches to ensure every trip is easy.

CHILD SAFETY LOCKS

With a quick push of a button, you'll enjoy the peace of mind that comes from knowing the youngest adventurers onboard aren't going anywhere.



REMOTE BOOT OPENING

When your hands are full, simply swipe your foot underneath the luggage compartment to automatically open the door. We call this the Kick Activation (Virtual Pedal), which only works when it detects your keys are in range.



UMBRELLA STORAGE

A spot of rain will never dampen your spirits again thanks to the umbrellas located in the front doors.



FUEL DOOR

With fuel-fill protection, you'll never load up with the wrong fuel again. You'll also find a handy ice scraper on the fuel door for those frosty mornings.





EVERY ANGLE COVERED

Obstacles come from every direction and in all shapes and sizes. Once Area View is activated, four wide-angled cameras make you aware of the challenges immediately surrounding you, enabling you to react quickly to whatever comes your way.

ALWAYS LOOKING OUT FOR YOUR SAFETY

PEDESTRIAN MONITOR

Whether it's a child chasing a loose ball or an adult glued to their smartphone screen, if someone unexpectedly crosses your path the Pedestrian Monitor automatically reduces your car's speed to help prevent a collision.



PARK ASSIST

This function removes the stress of reverse and parallel parking by identifying if the parking spot is big enough before automatically steering into the space for you.



TRAVEL ASSIST

The onboard camera recognises and displays key traffic signs on the trip computer and navigation system, helping you to be safer behind the wheel.

MULTI-COLLISION BRAKE

In the unthinkable event you have an accident in your KODIAQ, the Multi-Collision Brake system will automatically slow the car to help protect you from any further collisions.



HIGH BEAM CONTROL

Safer for you, kinder to others. Light Assist with High Beam Control can switch to high beam and back automatically, ensuring optimum visibility without dazzling oncoming traffic.



BLIND SPOT DETECT

An extra set of eyes on the road that monitors the blind spots allowing you to manoeuvre safely.

MAKE THE UNEXPECTED A FAMILY TRADITION

Even when tackling extreme terrains, every twist and turn is easier with off-road mode, providing hill-hold control, descent and braking assistance.





FUEL-EFFICIENT ENGINES

Whether you favour petrol or diesel, you'll find a clever engine to suit.



DIRECT SHIFT GEARBOX (DSG)

DSG automatically adapts to your driving style, whilst taking road conditions into account. It reduces the strain on the engine and stress to the driver, by deciding when to change gear, leaving you free to concentrate on the journey.



FOUR-WHEEL DRIVE

The 4x4 system is designed to smoothly distribute the torque between front and rear axles automatically, to help you maintain control and stability.



DYNAMIC CHASSIS CONTROL

This feature lets you switch between six driving modes, giving you added comfort, power or grip, depending on the terrain.



KODIAQ S

This trim is stacked with standard equipment and thoughtful touches rarely found at this level.



FRONT ASSIST



3-SPOKE LEATHER MULTI-FUNCTION STEERING WHEEL



SMARTLINK+ CONNECTIVITY

STANDARD EQUIPMENT

WHEELS

- > 17" RATIKON ALLOY WHEELS

EXTERIOR

- > HALOGEN HEADLIGHTS WITH LED DAYTIME-RUNNING LIGHTS
- > REAR LED LIGHTS (LOW FUNCTIONALITY)
- > FRONT FOG LIGHTS
- > ELECTRICALLY ADJUSTABLE AND HEATED DOOR MIRRORS
- > BLACK ROOF RAILS

INTERIOR

- > 3-SPOKE LEATHER MULTI-FUNCTION STEERING WHEEL
- > BLACK FABRIC UPHOLSTERY

SAFETY AND SECURITY

- > FRONT ASSIST
- > PEDESTRIAN MONITOR

ENTERTAINMENT AND COMMUNICATION

- > SWING RADIO WITH 6.5" TOUCHSCREEN DISPLAY
- > SMARTLINK+ CONNECTIVITY
- > DAB DIGITAL RADIO WITH BLUETOOTH®

COMFORT AND CONVENIENCE

- > MANUAL AIR-CONDITIONING
- > KEYLESS START/STOP



BLACK FABRIC UPHOLSTERY



17" RATIKON ALLOY WHEELS

RECOMMENDED OPTIONS

> TEMPORARY SPACE-SAVER SPARE WHEEL

Giving you that extra peace of mind, should you find yourself with a flat tyre. (Not available in combination with variable boot floor).

> TEXTILE FLOOR MATS

Add a new level of comfort to your journey with plush and textiled floor mats, located in both the front and rear.

> 17" MITYKAS ALLOY WHEELS

Including anti-theft wheel bolts.

> ELECTRICALLY FOLDING TOW BAR WITH ADAPTOR*

The electrically controlled tow bar is operated using a switch in the luggage compartment for ease of use and improved visual appearance. An LED indicator in the tow bar switch provides the tow bar position information.

> LUMBAR SUPPORT

Find your perfect driving position with lumbar support on both front seats.

*Not available on SE (7 seats), SE L (7 seats) and Edition (7 seats) 2.0 TDI 150PS 4x4



KODIAQ SE

Thanks to the impressive infotainment system and comfort enhancing features, your passengers will be kept amused and refreshed on even the longest adventure.



CRUISE CONTROL



PRIVACY GLASS



BOLERO RADIO WITH 8" TOUCHSCREEN DISPLAY

STANDARD EQUIPMENT (OVER S)

WHEELS

- > 18" ELBRUS ALLOY WHEELS

EXTERIOR

- > HEADLIGHT WASHERS

INTERIOR

- > BLACK FABRIC INTERIOR

ENTERTAINMENT AND COMMUNICATION

- > CRUISE CONTROL
- > BOLERO RADIO WITH 8" TOUCHSCREEN DISPLAY
- > FOUR ADDITIONAL LOUDSPEAKERS

COMFORT AND CONVENIENCE

- > DUAL-ZONE CLIMATE CONTROL WITH HUMIDITY SENSOR AND CONTROL
- > REAR PARKING SENSORS
- > RAIN AND LIGHT SENSORS
- > AUTO-DIMMING REAR VIEW MIRROR
- > PRIVACY GLASS
- > LIGHT ASSIST



BLACK FABRIC INTERIOR



18" ELBRUS ALLOY WHEELS

RECOMMENDED OPTIONS

> SEVEN SEATS

An additional third row comprising of two seats.

> AMUNDSEN SATELLITE NAVIGATION WITH 8" TOUCHSCREEN DISPLAY AND INTEGRATED WI-FI

Adventure further with the Amundsen navigation system. Including an 8" screen, DAB, SmartLink+, USB, SD card reader, WLAN and Infotainment online for one year.

> 18" TRITON ALLOY WHEELS

Including anti-theft wheel bolts.

> ELECTRICALLY FOLDING AND AUTO-DIMMING DOOR MIRRORS

Keep your door mirrors safe from passing cars whilst parked with electrically folding door mirrors, which also include auto-dimming to reduce light dazzling from other vehicles.

> FRONT AND REAR PARKING SENSORS

Helping you to park in the most challenging of spaces, the front and rear parking sensors guide you both in and out of any parking position.



KODIAQ SE L

With an impressive amount of standard equipment, the KODIAQ SE L is the perfect blend of practicality and specification.



REAR LED LIGHTS (HIGH FUNCTIONALITY)



ELECTRICALLY OPERATED BOOT AS STANDARD, WITH OPTIONAL KICK ACTIVATION (VIRTUAL PEDAL)



COLUMBUS SATELLITE NAVIGATION WITH 9.2" TOUCHSCREEN DISPLAY AND INTEGRATED WI-FI

STANDARD EQUIPMENT (OVER SE)

WHEELS

- > 19" SIRIUS ALLOY WHEELS

EXTERIOR

- > REAR LED LIGHTS (HIGH FUNCTIONALITY)
- > FOLDABLE DOOR MIRRORS
- > FULL LED HEADLIGHTS WITH ADAPTIVE FRONT LIGHT SYSTEM AND LED DAYTIME RUNNING LIGHTS, LED FRONT FOGS WITH CORNERING FUNCTION

INTERIOR

- > PIANO BLACK DECORATIVE DASHBOARD AND DOOR PANEL
- > BLACK ALCANTARA® UPHOLSTERY
- > HEATED FRONT SEATS

ENTERTAINMENT AND COMMUNICATION

- > COLUMBUS SATELLITE NAVIGATION WITH 9.2" TOUCHSCREEN DISPLAY AND INTEGRATED WI-FI
- > DRIVE MODE SELECT

COMFORT AND CONVENIENCE

- > ELECTRICALLY OPERATED BOOT
- > KEYLESS ENTRY AND START/STOP



BLACK ALCANTARA® UPHOLSTERY



19" SIRIUS ALLOY WHEELS

RECOMMENDED OPTIONS

> TRI-ZONE CLIMATE CONTROL

Allows three autonomous thermal comfort zones to be set: driver, front passenger and rear passenger. Temperature range is 16-29.5°C and the rear can be deactivated when not in use.

> PANORAMIC SUNROOF

Allows natural light to flood in, and looks great both inside and out.

> 19" TRIGLAV ALLOY WHEELS

Including anti-theft wheel bolts.

> LEATHER UPHOLSTERY

A luxurious addition to your KODIAQ, the leather upholstery is not only comfortable, but improves the visual layout of the cabin as well. (May contain some artificial leather. Only available in combination with lumbar support.)

> 3-SPOKE LEATHER HEATED MULTI-FUNCTION STEERING WHEEL

The perfect accompaniment for cold winter days. The leather multi-function steering wheel is heated at the touch of a button.



KODIAQ EDITION

To celebrate the arrival of our first five and seven-seater, the Edition features an extensive range of connected and assist systems fit for any adventure.



LIGHT ASSIST WITH HIGH BEAM CONTROL



ELECTRICALLY ADJUSTABLE FRONT SEATS WITH MEMORY FUNCTION



BLIND SPOT DETECTION

STANDARD EQUIPMENT (OVER SE L)

WHEELS

- > 19" TRIGLAV ALLOY WHEELS

EXTERIOR

- > METALLIC PAINT
- > SILVER ROOF RAILS

INTERIOR

- > BLACK LEATHER UPHOLSTERY
(MAY CONTAIN SOME ARTIFICIAL LEATHER)

ENTERTAINMENT AND COMMUNICATION

- > COLOUR MULTIFUNCTION TRIP COMPUTER

COMFORT AND CONVENIENCE

- > LANE ASSIST
- > BLIND SPOT DETECTION
- > ELECTRICALLY ADJUSTABLE FRONT SEATS WITH MEMORY FUNCTION
- > LIGHT ASSIST WITH HIGH BEAM CONTROL



BLACK LEATHER UPHOLSTERY



19" TRIGLAV ALLOY WHEELS

RECOMMENDED OPTIONS

> MEDIA COMMAND

Allows handheld devices, such as tablets, to connect and control the Infotainment and navigation system.

> PANORAMIC SUNROOF

Allows natural light to flood in, and looks great both inside and out.

> 19" SIRIUS ALLOY WHEELS

Including anti-theft wheel bolts.

> PARK ASSIST

Take the hassle out of parallel and bay parking, with the Park Assist, including front and rear parking sensors.

> ELECTRICALLY OPERATED BOOT WITH KICK ACTIVATION (VIRTUAL PEDAL)

Enables touch-free boot opening via a motion sensor under the rear bumper. If the system identifies the authorised key and detects the 'kick' motion, the boot will open or close. Only in combination with Keyless entry and start/stop.



KODIAQ SCOUT – AN APPETITE FOR ADVENTURE



OFF-ROAD MODE

Downhill Assist enables you to maintain a consistent speed when tackling steep descents.



ROUGH ROAD PACKAGE

Take on every unbeaten path thanks to the robust bumper and protective covers on the wheel arches, door sills and under the vehicle.



ALLOY WHEELS

Turn heads and steal attention both on and off-road with the 19" Crater anthracite alloy wheels.



STYLISH INTERIOR

The distinctive Alcantara® seats and wood finish dashboard both sport the Scout logo to further enhance the interior's boldness.

Live out your everyday adventures in true style. This is a car born to be wild, with a rugged, yet elegant design to match its off-road ambition. Higher ground clearance, protective elements and a host of driver assistance systems means whatever the conditions throw at you, you'll be exploring in extreme comfort.



RECOMMENDED OPTIONS

> DYNAMIC CHASSIS CONTROL

This feature lets you switch between modes: eco, comfort, normal, individual, snow and off-road - giving you added comfort, power or grip depending on the terrain.

> PANORAMIC ROOF

This electrically adjustable panoramic sunroof provides extra sunlight and fresh air at the simple touch of a button.

> AREA-VIEW CAMERA

Transmitted in real time to the infotainment display, area-view camera ensures you can react quicker to whatever comes your way.

> VIRTUAL PEDAL

Simply swipe your foot underneath the luggage compartment to automatically open the door. We call this the Kick Activation (Virtual Pedal), which only works when it detects your keys are in range.

> TOW BAR AND TRAILER ASSIST

Controlled via the luggage compartment handle, the optional tow bar can be folded out when required. Trailer Assist allows you to reverse manoeuvre safely whilst towing, turning the door mirror adjuster into a joystick to help you position the vehicle.

KODIAQ SPORTLINE – SHARPER, SLEEKER, SPORTIER

The KODIAQ SportLine delivers refinement and exhilaration in equal part. Exterior features include the gloss black front grille, chrome exhaust pipe and elegant body painted side sills, while the car's sports credentials are further enhanced in the interior through carbon fibre finish detailing and Alcantara® sports seating.



BLACK STYLING

The striking black radiator grille, door mirrors and roof railings give the SportLine's dynamic silhouette an edgier and sportier look.



SUPERSPORT STEERING WHEEL

The three-spoke leather supersport multifunction steering wheel with silver stitching puts everything you need at your fingertips. DSG models also have the added feature of aluminium gearshift paddles.



ALLOY WHEELS

The 20" Vega anthracite alloy wheels further enhance the sportiness of the SportLine's exterior.



ALCANTARA® SPORTS SEATS

The black Alcantara® sports seats with silver diamond stitching let you know that you're sitting in something special.



RECOMMENDED OPTIONS

> PANORAMIC ROOF

Invite the outside world in with the electrically adjustable panoramic sunroof, which opens at the simple touch of a button.

> CANTON SOUND SYSTEM

Whether indulging in a spot of in-car karaoke or catching up on the news, the CANTON Sound System delivers 575 watts of powerful clarity from 10 speakers around the car.

> LANE ASSIST

The Lane Assist system uses active steering correction to adjust your position and help you avoid any potential collisions.

> BLIND SPOT DETECT

Blind Spot Detect provides an extra set of eyes on the road that monitors the hard-to-see areas behind you, allowing you to manoeuvre safely.

> PARK ASSIST

This function removes the stress of bay and parallel parking by identifying if the parking spot is big enough before automatically steering into the space. Includes front and rear sensors.

BUILD YOUR PERFECT KODIAQ

Now it's your turn to add a distinctly personal twist to the KODIAQ. After all, why should everyone else have all the fun?

With our handy online car configurator you can choose your engine, colour and equipment to create your perfect KODIAQ in minutes. Whether you go for all-out luxury and state-of-the-art technology, or favour more practical features instead, the choice is yours.

Visit: skoda.co.uk/models/kodiaq and select **Build Your Own** to start creating.



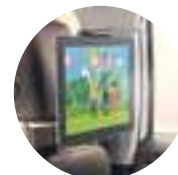
COLOUR



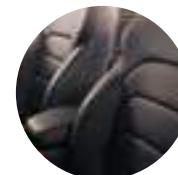
TRIM



TECH



SEATS



WHEELS



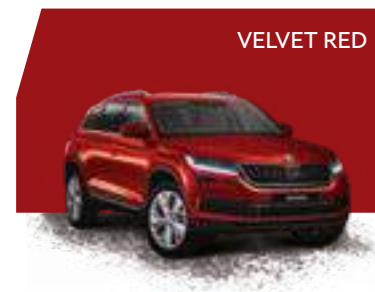
SOLID COLOUR



SPECIAL COLOURS




EXCLUSIVE COLOUR



METALLICS





The information in this brochure referring to specification, design, equipment, material and external appearance relates to the time at which this brochure was printed. Whilst every effort is made to ensure its accuracy, the information in this brochure is not binding and is subject to alteration. Some images within this brochure depict left hand drive models, with both standard and optional equipment shown. Please confirm exact specifications, prices and colour availability with your ŠKODA Retailer who will be notified of any changes as they occur.

UK 04/18

03330 037 504

skoda.co.uk

customerservices@skoda.co.uk