

5

fine
cars
from

Austin

YOU CAN DEPEND ON IT !

Austin

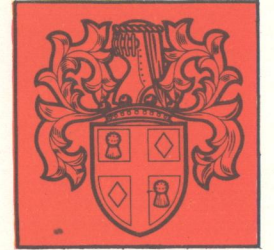


Throughout the
The fine range
meticulous care
organization
and above all

the

And they are
outstanding performance
Whatever your
at a price to suit

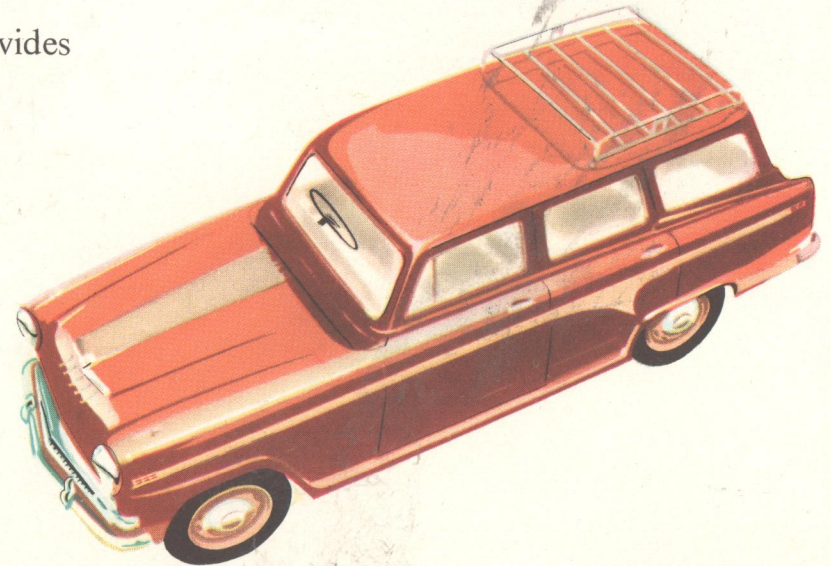
of England



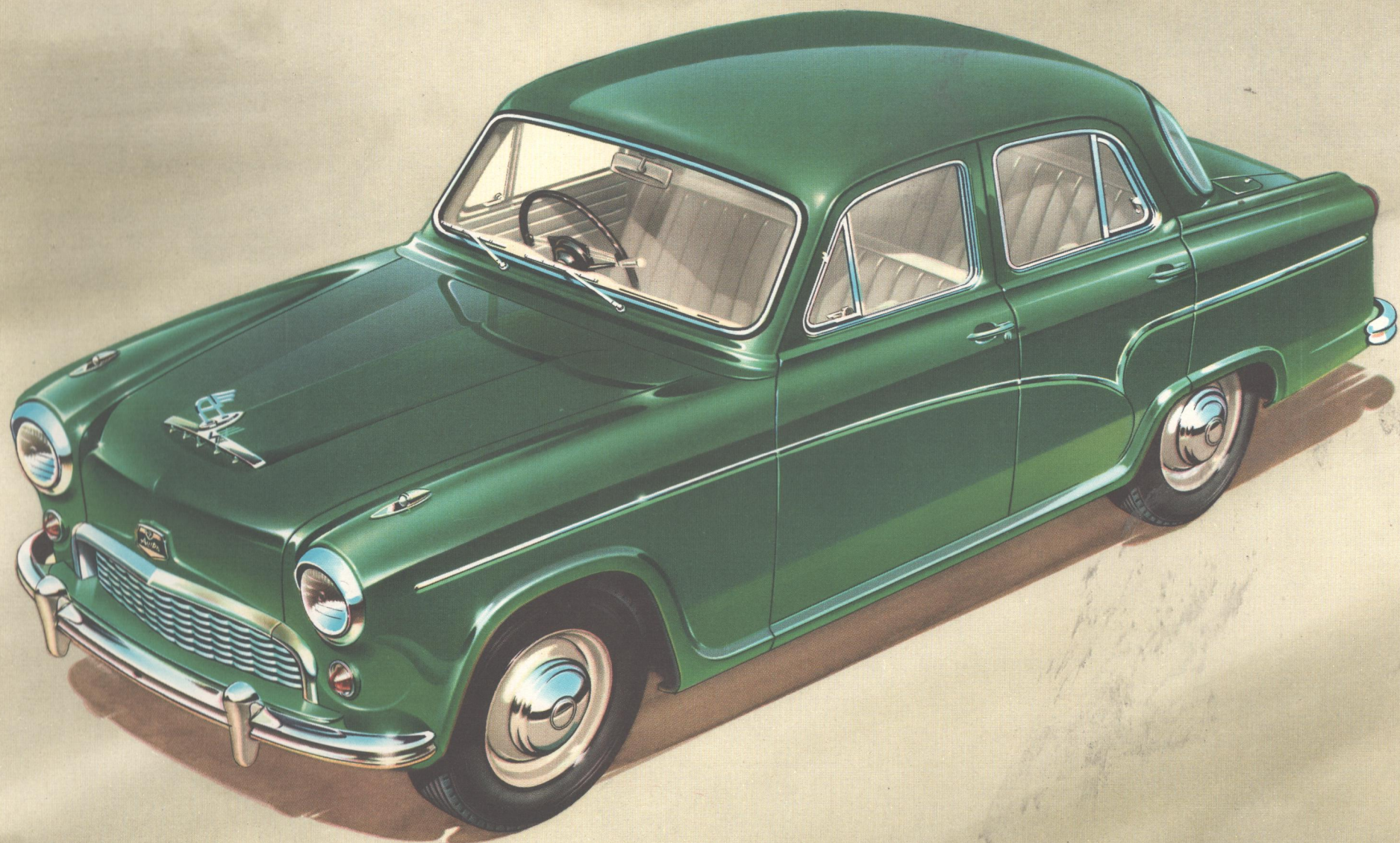
motoring markets of the world, Austin cars have established a firm reputation for quality and reliability. The cars offered today by the Austin Motor Company have been developed with care and attention through the far-ranging scientific resources at the command of the vast B.M.C. It is not surprising, therefore, that a continuous quest for power, stamina, reliability—safety, has brought magnificent results culminating in

five finest cars you can see

well worth the closest study! Every one, from the A35 to the A105 provides performance, comfort, roominess and, above all, value for money. No need there is an Austin to suit your purpose—your pocket!







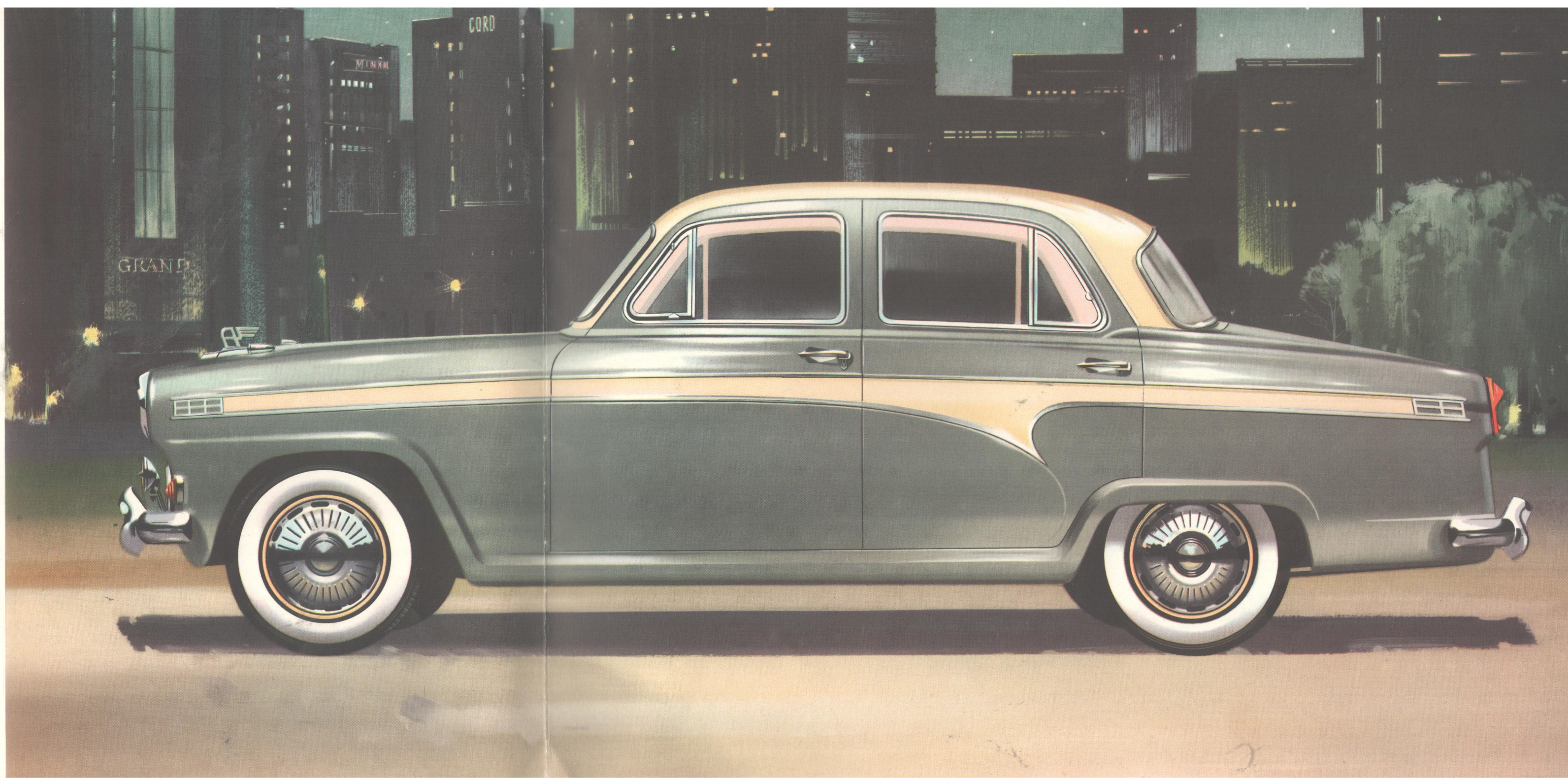
The new De luxe Austin A105

Lovely to look at, with its exciting new styling, the Austin A105 saloon presents a delightfully graceful appearance on all occasions.

Following on the super-luxury standard set by its predecessor, the interior of this latest model from Austin of England is fully equipped and superbly upholstered for the lasting comfort of its occupants, a heater and overdrive being fitted as standard items of equipment.

And not just good to look at either, for the A105 has a powerful O.H.V. six-cylinder twin-carburettor engine producing an output in the region of 102 b.h.p.! This quite definitely permits quick getaway, smooth powerful hill-climbing and high cruising speeds in safe, super road-holding comfort.





Austin

A 95 De luxe Saloon

The new Austin A95 six cylinder saloon, beautifully re-styled and equipped to carry six people in superb comfort. It is available in a wide range of colours and interior trim, and has a comprehensive selection of optional equipment including heater and demister, radio, and overdrive or automatic gearbox — all available, for the needs of the individualist, at extra cost.

A 95 Countryman

A perfect dual purpose vehicle for all — particularly business men. Powered by a sparkling six cylinder O.H.V. engine the Countryman is extremely versatile and fits the picture perfectly whether "delivering the goods" or for family touring.

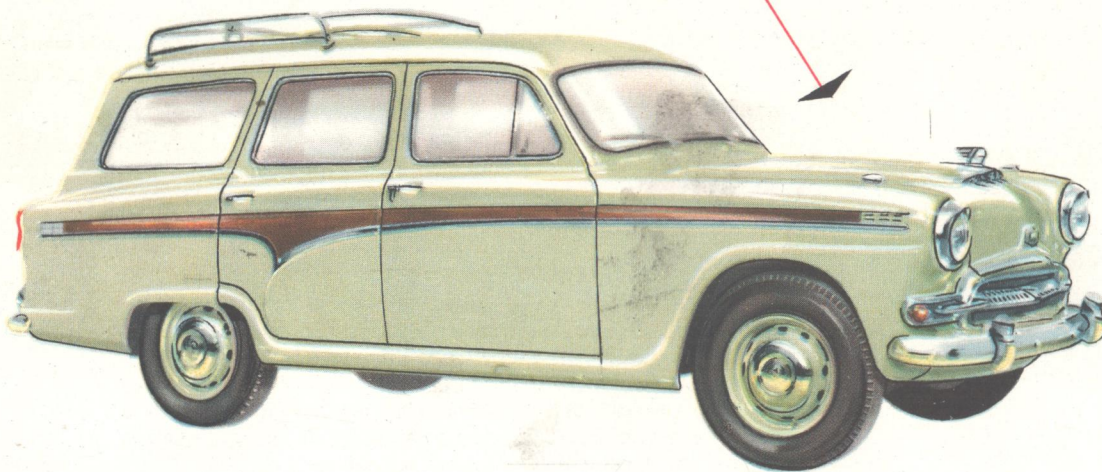
A full six-seater in its passenger form, the rear seat can be folded flat, producing 62 cu. ft. of load space, yet still leaving room for up to three people on the front seat.

It is available with a full range of optional equipment at extra cost, including fully automatic transmission in lieu of the standard four-speed synchromesh gearbox.

A 55 Saloon

Well tried and proved over millions of miles in all countries of the world, this four/five seater saloon is, like all other Austin's, of robust all-steel unitary construction.

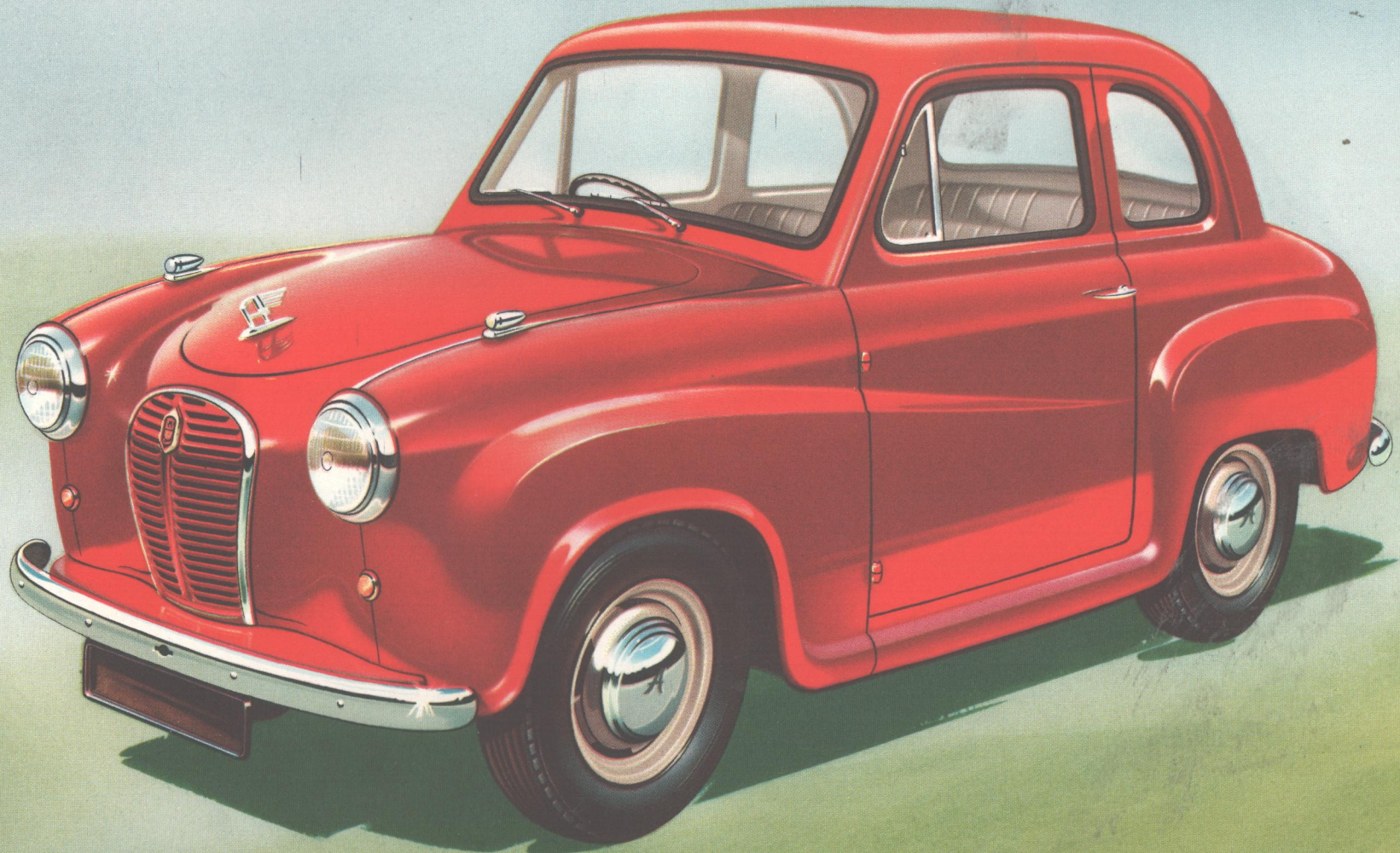
In its newest form, with a four-cylinder 51 b.h.p. engine, this model will maintain an effortless high cruising speed or idle without fuss in traffic. It is available with overdrive and/or 'Manumatic' control as optional extras. In the latter, the clutch pedal is dispensed with, the clutch being synchronised to operate automatically with the movement of the gear lever.



A 35 Saloon

Smallest of the range, this car has a new high performance O.H.V. 948 c.c. engine and a sports type 'remote control' gearbox. Its excellent road holding qualities and lively performance are still retained, over 50 miles per gallon being possible at a constant 30 miles per hour.

There is room — elbow room and leg room — in plenty for four people and the driving seat is adjustable to five positions, in both two- and four-door saloons.



O.H.V. Power

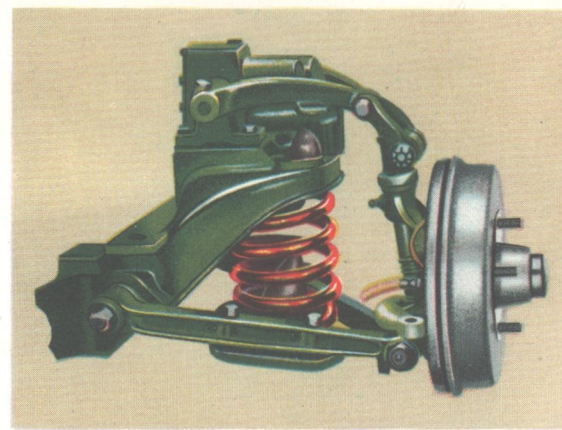
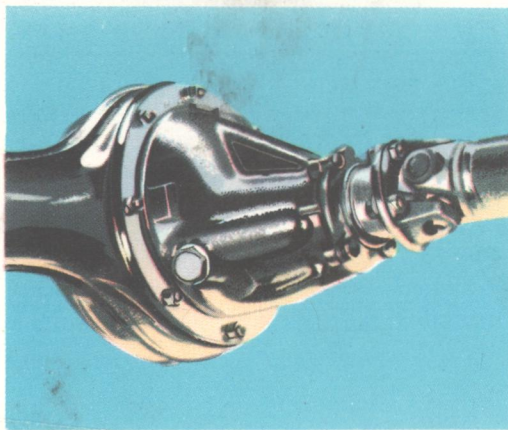
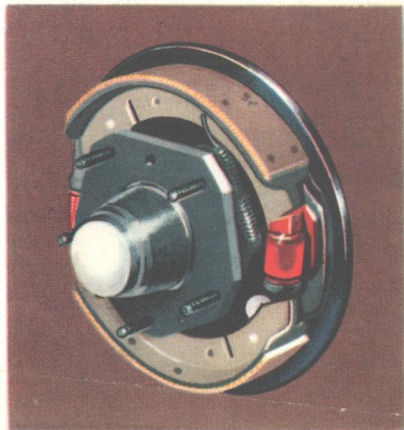
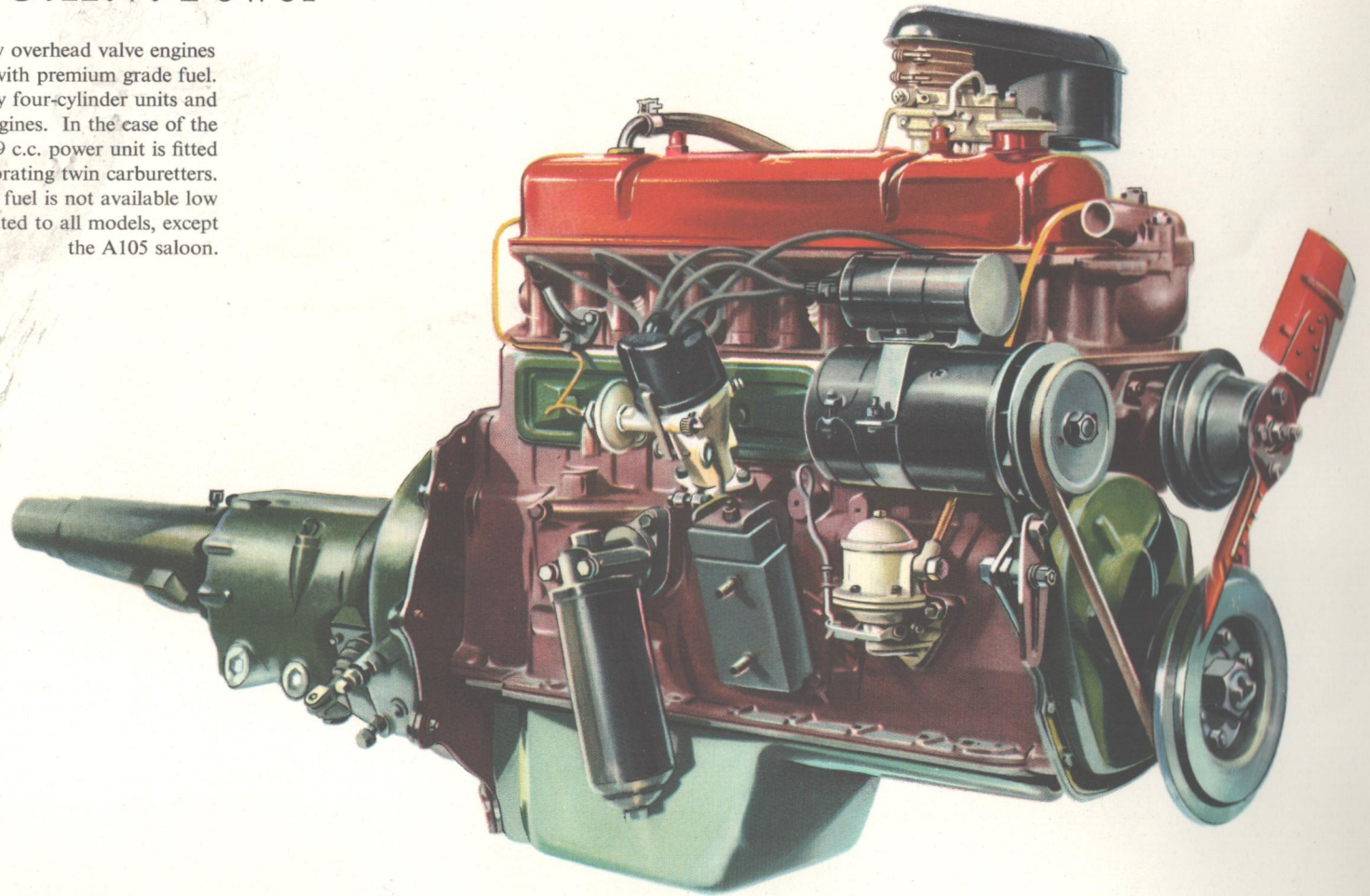
All Austin cars have high efficiency overhead valve engines specially developed for use with premium grade fuel. The A35 and A55 saloons are powered by four-cylinder units and the A95 range all have six cylinder engines. In the case of the A105 saloon, the basic six cylinder 2639 c.c. power unit is fitted with a manifold incorporating twin carburetters. In countries where high grade fuel is not available low compression engines are fitted to all models, except the A105 saloon.

Brakes

Quick acting hydraulic brakes respond at a touch of the pedal. An added safety factor on all Austins is two-leading-shoe action employed on the front wheels.

Hypoid Rear Axle

The extensive use of this type of rear axle on each model permits a conveniently low floor and provides a smooth final drive to the road wheels.



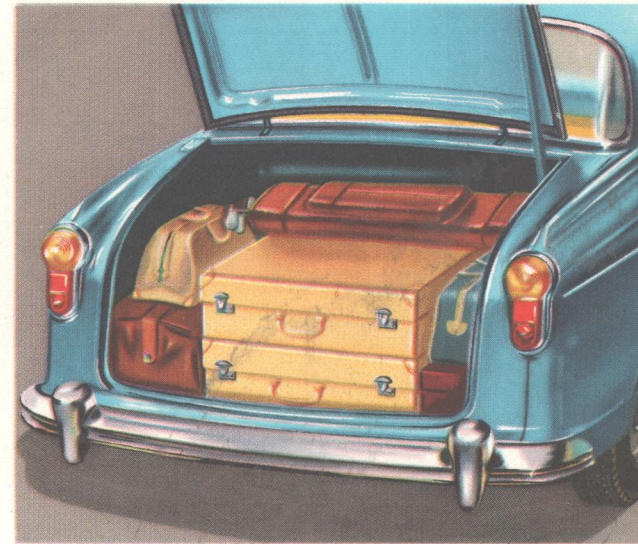
Suspension

Independent coil springs and wishbones, controlled by double-acting hydraulic shock absorbers, form the front suspension for the entire Austin range. Hydraulic shock absorbers on the semi-elliptic rear springs are interconnected by a stabilizing bar which out road roughness and give a comfortable ride with safe control at all speeds.



A spacious boot

Generous luggage space is provided in the lockable rear boot of each model. The spare wheel of the A35 Saloon is stowed vertically on one side of the compartment and is easily accessible even with a full load of luggage. All other Austins carry the spare wheel in a separate wind-down tray beneath the luggage boot.

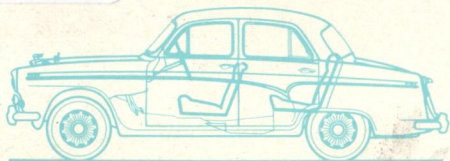


A comfortable interior

Delightfully upholstered in hard wearing materials, the interior of every Austin — big and small — is designed to give the maximum amount of travel comfort to its occupants. Every item of equipment is finely finished to the last detail and provision is made for the installation of numerous optional extras.

0034

specifications



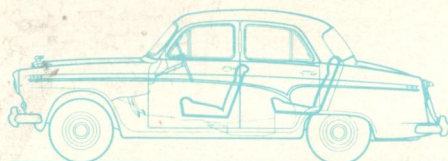
A105 De luxe Saloon

As for A95 De luxe Saloon with following exceptions:
Engine: Twin S.U. Carburettors. B.H.P. 102 @ 4,600 R.P.M. Max. Torque 142 lb. ft. @ 2,400 R.P.M.
Coachwork: Five/Six seater, all-steel unitary construction. Toughened glass windows. Adjustable front seats with armrests. Interior air conditioning, heating and demisting. Electric clock. Ash trays front and rear. Hide/P.V.C. trim. Floor carpet. Rear seat armrests. Two sun visors. Over-riders. Two fog lamps. Screen washer. Stainless steel wheel discs and white-wall tyres. Dual-tone paint finish. Optional extras — Overdrive. Automatic Gearbox. Radio.



A95 Countryman

As for A95 De luxe Saloon with following exceptions:
Coachwork: Five/six seat passenger van. All-steel construction. Toughened glass windows. Horizontally divided rear doors. Adjustable front seats. Ash trays. Interior air conditioning, heating and demisting. Electric clock. Divided rear seat squab folds flat or forms headrest for double bed space. Cubic loadspace — rear seat up, 28 cu. ft. (0.79 cu.m.), rear seat folded, 62 cu. ft. (1.76 cu.m.). Normal load 6-70 — 15 Cushion tyres: 5 people and approximately 136 lb. (61.69 kg.) luggage. Maximum load 6-70 — 15 Cushion Fort tyres: 5 people and approximately 560 lb. (254 kg.) luggage. Estimated unladen weight 3059 lb. (1387 kg.). Optional extras — Automatic gearbox. Radio.



A95 De luxe Saloon

6-Cyl. Engine: Bore 3-125 in. (79.4 mm.); Stroke 3-5 in. (89.00 mm.); Cubic capacity 161 cu. in. (2639 cc.); B.H.P. 92 @ 4500 R.P.M.; Torque 130 lb. ft. @ 2000 R.P.M.; Compression ratio 8-25 to 1. Single carburettor; Oil capacity approximately 12 pints (6.8 litres); Pressurised cooling system capacity approximately 25 pints (14.2 litres); 12 volt coil and distributor with auto and vacuum control. Clutch: 9 in. (0.23 m.) diam. single dry plate. Petrol tank capacity 16 gallons (72.7 litres).

Transmission: Steering column gear change. Four speed synchromesh gearbox, ratios — Top 1-00, Third 1-435, Second 2-22, First 3-312, Reverse 4-493 (Overdrive: O/D Top 0-7, O/D Third 1-004). Oil capacity approximately 4 pints (2.3 litres) — with Overdrive 5 pints (2.9 litres). Open Prop. Shaft. Rear Axle: Ratio 3-91 to 1 (with overdrive 4-1 to 1); oil capacity approximately 3 pints (1.70 litres). Road speeds in m.p.h. @ 1,000 r.p.m.: Top 18-88, Third 13-80, Second 8-92, First 5-98 (with Overdrive, disengaged — Top 18-88, Third 13-16, Second 8-51, First 5-7. Overdrive engaged — Top 26-98, Third 18-80).

Suspension: Hydraulic shock absorbers, I.F.S. and semi-elliptic rear springs.

Brakes: 11 in. (0-28 m.) diam. hydraulic. 2-leading shoe front.

Wheels: 15 in. x 4½ in. pressed steel disc.

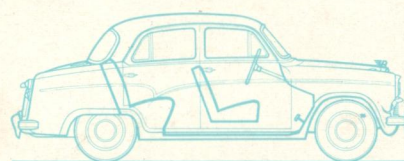
Tyres: 6-40 — 15 tubeless.

Electrical: 12 volt 51 A.H. battery (63 A.H. for cold countries). Headlamps, side, combined stop-and-tail, and flashing direction indicator lamps; twin wind-tone horns; dual screen wipers. Interior roof lamp.

Coachwork: Five/six seater, all-steel unitary construction. Toughened glass windows. Adjustable front seats with armrests. Ash trays front and rear. Interior air conditioning, heating and demisting. P.V.C. head-lining. Hide/P.V.C. trim. Floor carpet. Rear seat armrest. Two sun visors. Chromium mouldings. Over-riders. Electric clock. Optional extras — Automatic Gearbox. Radio. Overdrive.

Leading Dimensions: Wheelbase 8 ft. 9½ in. (2-68 m.);

Overall Length 15 ft. 0½ in. (4-59 m.); Width 5 ft. 4 in. (1-62 m.); Height 5 ft. 2 in. (1-57 m.); Dry Weight 25½ cwt. (1308 kg.).



A55 Saloon

4-Cyl. Engine: Bore 2-875 in. (73-025 mm.); Stroke 3-5 in. (89 mm.); Cubic capacity 90-88 cu. in. (1489 cc.); B.H.P. 51 @ 4250 r.p.m.; Torque 81 lb./ft. @ 2,000 r.p.m.; Compression ratio 8-3 to 1; Oil capacity approximately 7 pints (3-97 litres); Pressurised cooling system capacity approximately 12 pints (6-8 litres); 12 volt coil and distributor with auto and vacuum control. Clutch: 8 in. (0-20 m.) diam. single dry plate; 7½ in. (0-18 m.) centrifugal for 'Manumatic.' Petrol tank capacity 8½ gallons (39-7 litres).

Transmission: Steering column gear change. Four-speed synchromesh gearbox, ratios — Top 1-00, Third 1-490, Second 2-403, First 3-945, Reverse 5-159. (Overdrive: O/D Top 0-7, O/D Third 1-04). Oil capacity approximately 4½ pints (2-8 litres) — with overdrive 5½ pints (3-26 litres). Open prop. shaft. Rear Axle: Ratio 4-3 to 1, (with overdrive 4-875 to 1), oil capacity approximately 2 pints (1-13 litres). Road speeds in m.p.h. @ 1,000 r.p.m.: Top 15-84, Third 10-63, Second 6-59, First 4-02. (With overdrive, disengaged, Top 13-97, Third 9-38, Second 5-81, First 3-54. Overdrive engaged, Top 19-95, Third 13-39).

Suspension: Hydraulic shock absorbers, I.F.S. and semi-elliptic rear springs.

Brakes: 9 in. (0-23 m.) diam. hydraulic 2-leading-shoe front.

Wheels: 13 in. x 4 in. pressed steel disc.

Tyres: 5-90 — 13 tubeless.

Electrical: 12 v. 51 A.H. battery. Hooded headlamps, side, stop-and-tail and number plate lamps. Flashing direction indicators. Interior roof lamp. Dual wind-screen wiper.

Coachwork: Four/Five seater, all-steel unitary construction. Toughened glass windows. Adjustable front seats. P.V.C. headlining. Interior air conditioning.

Standard Model: P.V.C. trim. Rubber/carpet floor covering. One sun visor. Single horn. Optional extras — Heating and demisting. Radio. Electric clock. Overdrive. 'Manumatic' clutch control.

De Luxe Model: P.V.C. and hide trim. Floor carpet. Armrests. Two sun visors. Windtone horns.

Chromium mouldings. Over-riders. Heating and demisting. Optional extras — Radio. Electric clock. Overdrive. 'Manumatic' clutch control.

Leading Dimensions: Wheelbase 8 ft. 3½ in. (2-51 m.); Overall length 13 ft. 10½ in. (4-24 m.); Width 5 ft. 1½ in. (1-55 m.); Height 5 ft. 0¼ in. (1-53 m.); Dry Weight 20 cwt. (1016 kg.).



A35 Saloon

4-Cyl. Engine: Bore 2-478 in. (62-9 mm.); Stroke 3-0 in. (76-2 mm.); Cubic capacity 57-82 cu. in. (948 cc.); B.H.P. 34 @ 4750 r.p.m.; Torque 50 lb./ft. @ 2,000 r.p.m.; Compression ratio 8-3 to 1. Oil capacity approximately 7 pints (3-9 litres); Pressurised cooling system capacity approximately 8½ pints (4-82 litres); 12 volt coil and distributor with auto and vacuum control. Clutch: 6½ in. (0-16 m.) diam. single dry plate. Petrol tank capacity 5½ gallons (26-13 litres).

Transmission: Remote control four-speed synchromesh gearbox, ratios — Top 1-00, Third 1-412, Second 2-374, First 3-628, Reverse 4-664. Oil capacity approximately 2½ pints (1-42 litres). Rear Axle: Ratio 4-55 to 1, oil capacity approximately 1½ pints (0-98 litres). Road speeds in m.p.h. @ 1,000 r.p.m.: Top 14-26, Third 10-10, Second 6-000, First 3-93.

Suspension: Hydraulic shock absorbers with I.F.S. and semi-elliptic rear springs.

Brakes: 7 in. (0-17 m.) diam. hydraulic. 2-leading-shoe front.

Wheels: 13 in. x 3½ in. pressed steel disc.

Tyres: 5-20 — 13 tubeless.

Electrical: 12 v. 38 A.H. Battery. Headlamps, side, stop-and-tail and number plate lamps. Flashing direction indicators. Single horn. Twin windscreen wipers.

Coachwork: Standard Model — Four seater, 2- or 4-door all-steel unitary construction. Toughened glass windows. Adjustable front seats. Floor carpet/rubber mat. Single sun visor.

De luxe Model: Specification includes Ash trays, Over-riders and Hinged Rear Windows on 2-door Models. Optional extras — Radio. Heater.

Leading Dimensions: Wheelbase 6 ft. 7½ in. (2-02 m); Overall Length 11 ft. 4½ in. (3-46 m.); Width 4 ft. 7½ in. (1-40 m.); Height 4 ft. 11½ in. (1-50 m.); Dry Weight — 2-door: 13½ cwt. (686 kg.), 4-door: 13½ cwt. (692 kg.).

The goods manufactured by the Austin Motor Company Limited are supplied with an express Warranty, which excludes all warranties, conditions and liabilities whatsoever implied by Common Law, Statute or otherwise. PRICES — The Company reserves the right to vary the list prices at any time. SPECIFICATION — The Company reserves the right on the sale of any vehicle to make before delivery without notice any alteration to or departure from the specification, design or equipment detailed in this publication. Under present supply difficulties such alterations are likely to occur at any time.

THE AUSTIN MOTOR COMPANY LIMITED LONGBRIDGE BIRMINGHAM

AUSTIN MOTOR EXPORT CORPORATION LIMITED

LONGBRIDGE

BIRMINGHAM

ENGLAND

