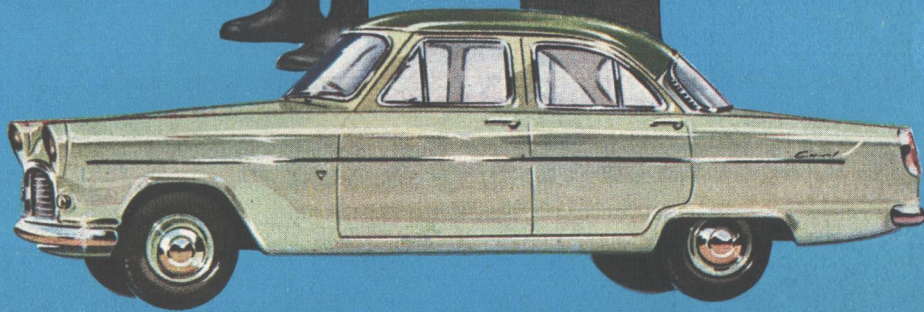




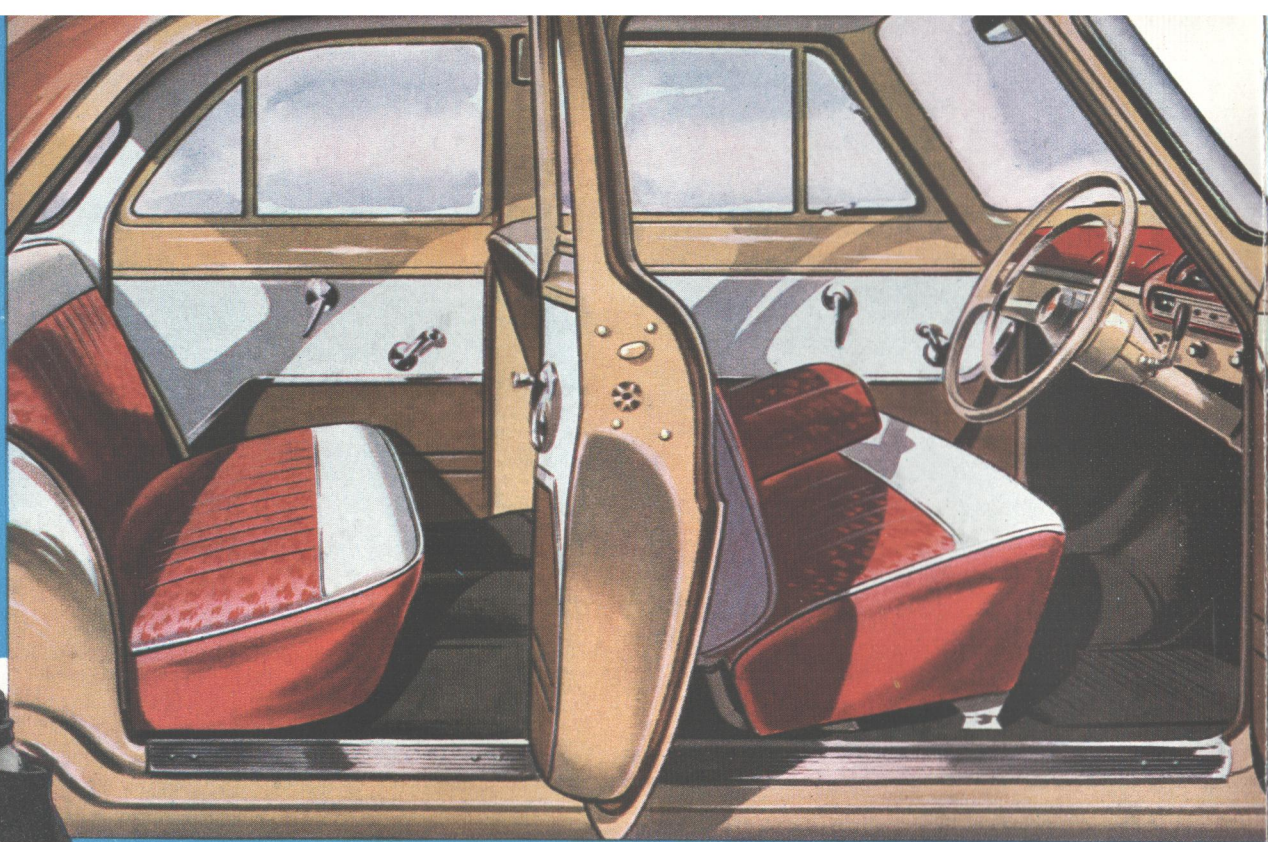
THE *Consul* DE LUXE



THE CONSUL DE LUXE GETS THE GREEN LIGHT
... THE WORLD OVER!

Traffic duty in the middle of Paris - or London, Rome, Vienna - leaves little time for admiration. But every now and then, policemen would agree, something passes that merits a closer look . . . the Consul de Luxe for instance, the handsome new version of an established favourite . . . long, low, wide, elegant yet extremely business-like . . . leading Britain's cars in styling and performance.





There are many new features to excite official comment. Illustrated here is the new adjustable front seat of improved design and comfort, with a centre arm rest. The pile carpet, hide and nylonweave upholstery, and two-tone door panels give an extra touch of luxury; an automatic cigar lighter, vanity mirror on the passenger's sun visor, and two coat hooks at the roof line are other thoughtful refinements . . .

Under the policeman's appraising eye, here's the really generous boot —holds over 18 cubic feet of luggage; notice too the new chrome surrounds



A pleasing and graceful prospect . . .
A second and contrasting colour is applied to the roof; you can choose Black over Blue, White over Coral, Green over White, Coral over Beige. The four cylinder 1,703 cc engine cheerfully copes with all demands and conditions, and Ford "glide-ride" front suspension ensures a comfortable ride, safe cornering and road-holding. It's a wonderfully roomy car, with amazing all-round visibility too.
And remember, wherever you go in your Consul de Luxe you're backed by the unrivalled facilities of the famous Ford Service—the best at lowest cost.

The new features are the pressure operated windscreen washer, for summer dust and winter mud, and the new steering wheel fitted with full horn ring.



THE NEW *Consul* DE LUXE



0067

SPECIFICATION

ENGINE

4 cylinder cast integrally with upper half of crankcase. Bore 3.25 in. (82.55 mm.), stroke 3.13 in. (79.5 mm.). Capacity 103.9 cu. in. (1703 c.c.). Overhead valves push rod operated. Comp. ratio, 7.8:1. B.H.P., 59 at 4,400 r.p.m. Low compression head optional. 3 bearing crankshaft with integral weights, dynamically balanced.

IGNITION

12v coil. Automatic advance/retard with vacuum control.

FUEL SYSTEM

10½ gallons. Mechanical pump. Aircleaner.

COOLING SYSTEM

Pressurised. Fan and water pump with thermostatic heat control. Capacity 18.0 pints.

TRANSMISSION

Clutch.—Single dry plate, spring cushioned, hydraulic operation from pedal. Concentric gear lever on steering column. Synchromesh on top and second gears. Helically cut gears. Three forward speeds. Oil capacity 2.5 pints approx.

FRONT SUSPENSION

Independent front wheel suspension. Low periodicity coil springs. Special double-acting telescopic shock absorbers. Anti-roll Torsion Bar.

REAR SUSPENSION

Longitudinal, asymmetrical, semi-elliptic springs with hydraulic double-acting shock absorbers.

BRAKES

Hydraulic internal expanding. (Front) two leading shoe. (Rear) single leading shoe. Total lining area 147 sq. in. Handbrake on rear wheels only.

STEERING

High efficiency Recirculatory ball type. Ratio 18.0 to 1. Two spoke steering wheel, diameter 17 in.

INSTRUMENTS

Grouped immediately in front of driver. Speedometer, fuel gauge, ammeter, ignition and oil pressure warning lights. Direction indicator tell-tell lights. Main beam warning light. Instrument lighting.

BODY

All steel welded integral construction. Safety glass all round. DUAL BODY PAINT.

GENERAL EQUIPMENT

Cigar Lighter, Windscreen Washers, Dual Windtone Horns, Two Coat Hooks, Full Circle Horn Ring, Vanity Mirror on Passenger Sun Visor, Carpet Floor Covering, Front Seat Centre Arm Rest, Hide/P.V.C. or Nylonweave is Standard Trim.

GENERAL DIMENSIONS

Overall Length	14 ft. 4.15 ins.
Overall Width	5 ft. 8.62 ins.
Overall Height (unladen)	5 ft. 1.50 ins.
Wheelbase	8 ft. 8.50 ins.
Track Front	4 ft. 5 ins.
Track Rear	4 ft. 4 ins.
Kerb Weight	2504 lbs

Ford policy is one of continuous improvement. The right to change prices specifications and equipment at any time without notice is reserved.

WITH OUR COMPLIMENTS

FORD TIMES is published bi-monthly and obtainable from your Ford Dealer or newsagent, keeping you up-to-date with motoring news and articles of topical interest for every Ford owner.

