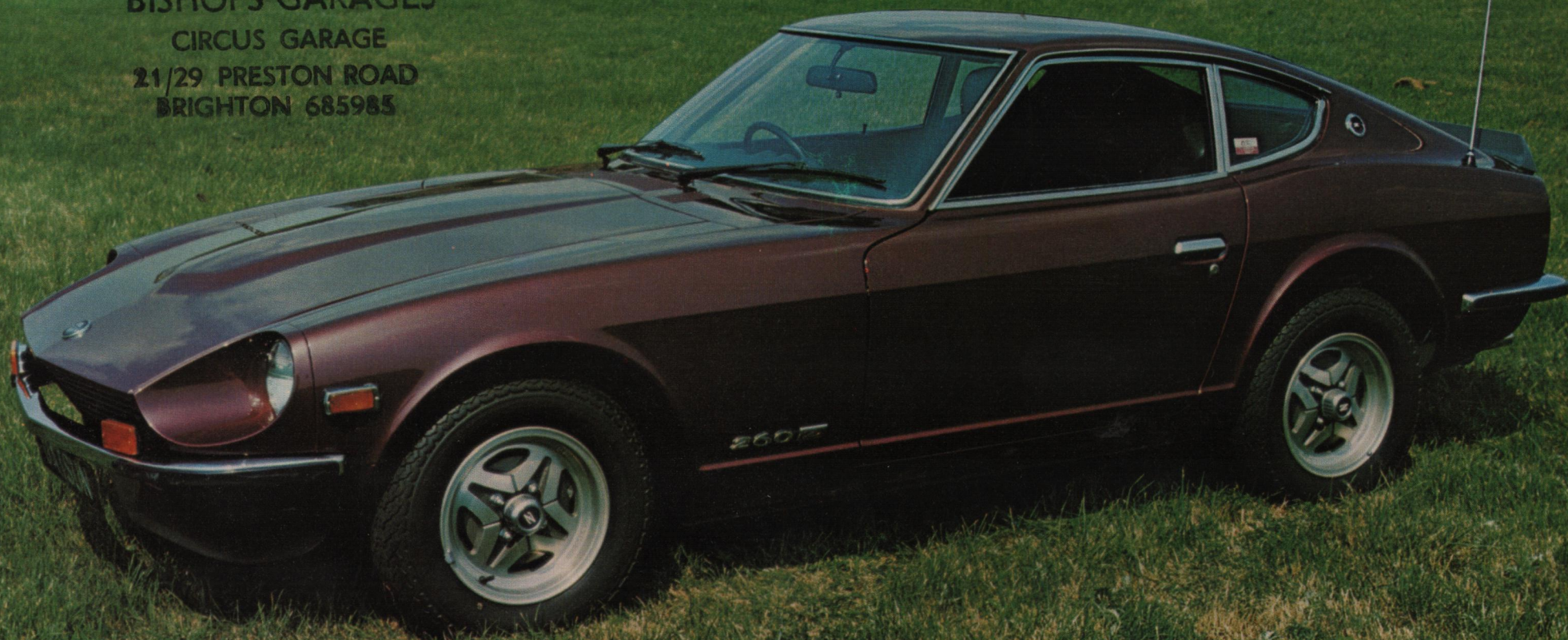
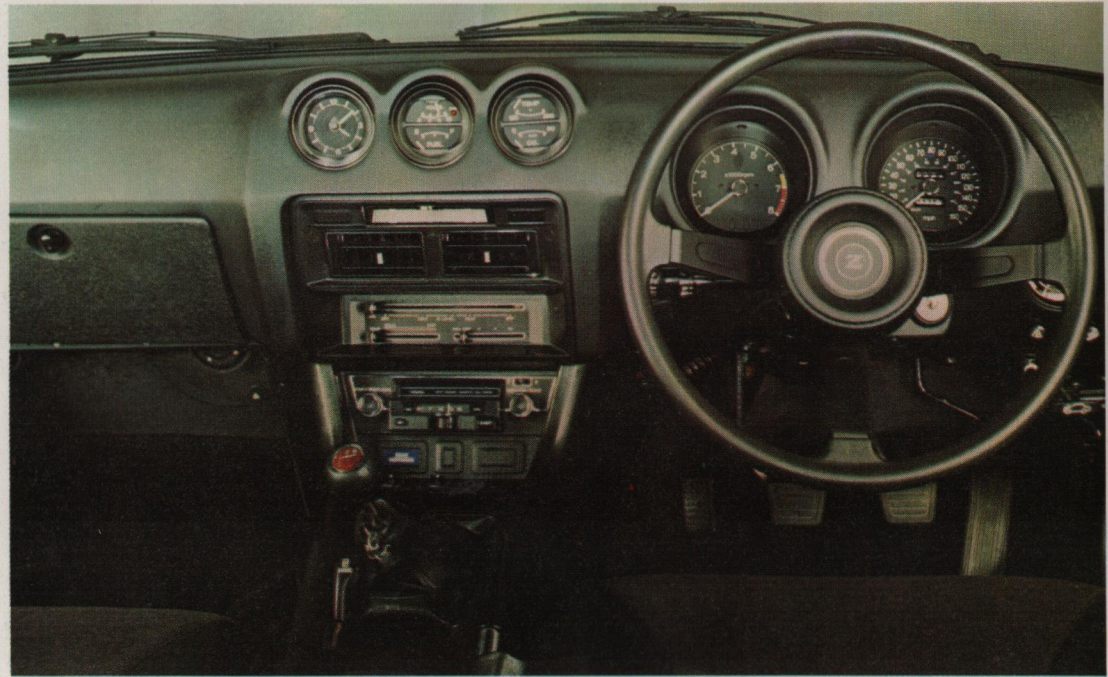


BISHOPS GARAGES
CIRCUS GARAGE
21/29 PRESTON ROAD
BRIGHTON 685985



DATSUN 260Z 2seater
2+2

260Z 2seater and 2+2



luxury — in a practical performance car

There are two versions of the famous "Z" — a two-seater sports and a 2+2. In both you get a rare blend of performance, luxury and practicality.

As a driver's car the "Z" is superb — powerful, balanced and a joy to handle. With its 6-cylinder, 7 bearing, 2.6 litre engine, the two-seater will comfortably attain 125 m.p.h. and reach 60 in around 8.5 seconds. A precise 5-speed, close ratio gearbox helps the driver to make the most of the car in any situation. First, second and third give 46, 71 and 102 m.p.h. respectively, while overdrive fifth holds the revs down to 5700 at maximum speed and makes 70 a quiet and economical 3150 rpm. A combination of rack and pinion steering and fully independent McPherson strut suspension allows you to use the power to the full.

Sheer performance is an essential part of the character of the "Z" but Datsun give you economy and tough reliability too. The 260Z can regularly return over 25 m.p.g. giving a range of over 350 miles between refills. And every car is built to Datsun's exceptional standards of care and strength.



If any further proof of the ruggedness of the "Z" was needed, then you have only to look at racing and rally results throughout the world. From America to Africa the "Z" has appeared in the winner's circle time and time again.

The interior of the 260Z has been tailored by enthusiasts for the man who enjoys his motoring. The impressive array of instruments includes a 160 m.p.h. speedometer and 8000 rpm tachometer mounted directly in front of the driver in glare free housings. Oil pressure, water temperature and fuel gauges, together with voltmeter and electric clock, are sensibly angled towards the driver.

Datsun cars are renowned for their luxury standard equipment, and the 260Z is no exception. Take, for instance, the combined radio with electric aerial and stereo cassette player providing superb in-car entertainment. Reclining seats are upholstered in soft, hard-wearing cloth and have built-in head restraints. The versatile heating and ventilation system has separate controls for temperature and air distribution and a three-speed fan to boost the flow as required. Directional vents in the console and face level sockets complete the system ensuring comfort for both occupants.

The 260Z is also well equipped for bad weather with three-speed wipers plus wash/wipe and electric washers. Plus, of course, a heated window in the rear tailgate. There's plenty of room for oddments in the lockable, illuminated fascia glove compartment and a centre console locker is ideal for storage of your favourite cassettes. Other refinements include cigar lighter, map light, dipping interior mirror and rheostat controlled instrument lighting.



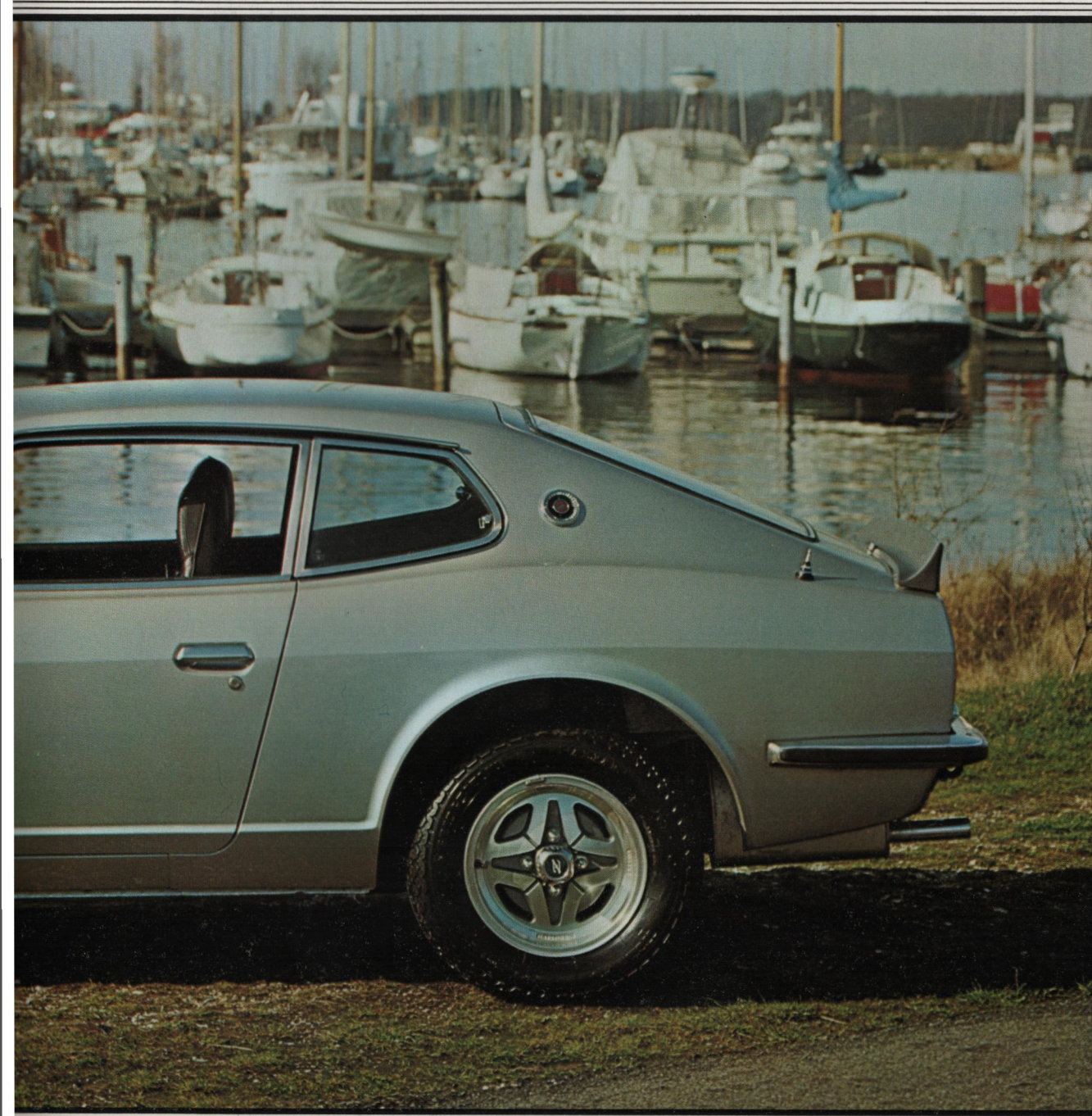
the "no compromise" grand tourer

Of course, there are those who would like to share the experience of driving the world's best selling sports car series with more than just one passenger.

So the 260Z 2+2 offers the family man all the rewards of 260Z sports motoring with the practical advantages of a four seater.

The overall length of the "Z" has been increased by a little over a foot and the roof line modified to give a full 33 inches rear headroom to make this a really practical 2+2 Grand Tourer. The rear seats are individually contoured and deeply sculptured to offer maximum comfort and support. When not in use the rear seat can be folded down allowing considerably more luggage space on the flat rear deck. The luggage platform is fully covered with luxurious deep pile carpet and there are straps for securing luggage or equipment. Loading is easy via the 260Z's hatchback style tailgate with its electrically heated rear window.

The spare wheel and tool kit are housed beneath the platform, as is the 14-gallon fuel tank.



ess of the
to look at
he world.
appeared
in.

tailored by
motoring.
includes a
000 rpm
nt of the
ure, water
ther with
ly angled

ir luxury
Z is no
combined
ette player
Reclining
ring cloth
e versatile
separate
ution and
required.
face level
, comfort

d weather
wipe and
a heated
plenty of
luminated
e console
favourite
ar lighter,
d rheostat



*the "n
comp
gran*

*Of course, t
share the exp
selling sports
passenger.*

*So the 260Z
rewards of
practical adv*

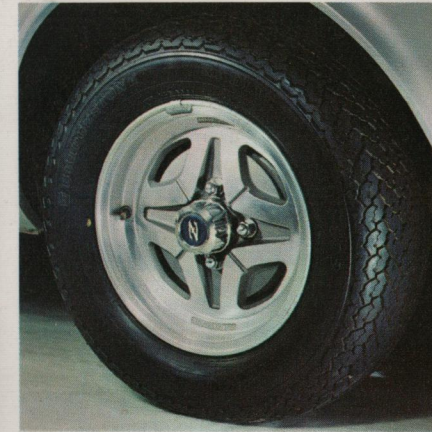
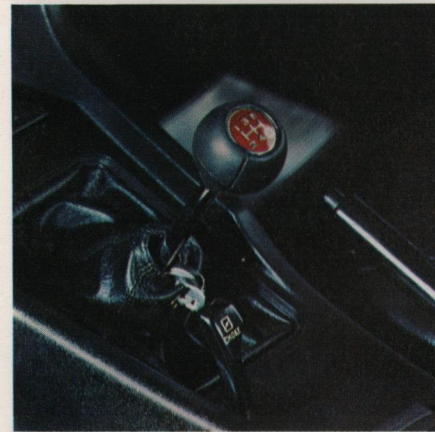
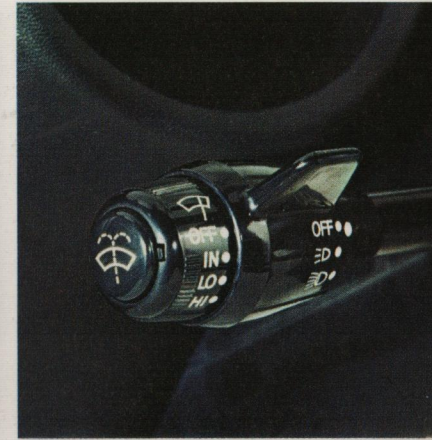
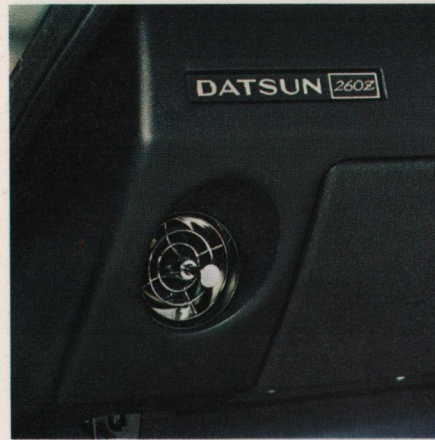
*The overall le
by a little ove
to give a full
a really prac
seats are in
sculptured t
support. Wh
folded down
space on th
platform is fu
carpet and th
equipment.
hatchback s
heated rear w*

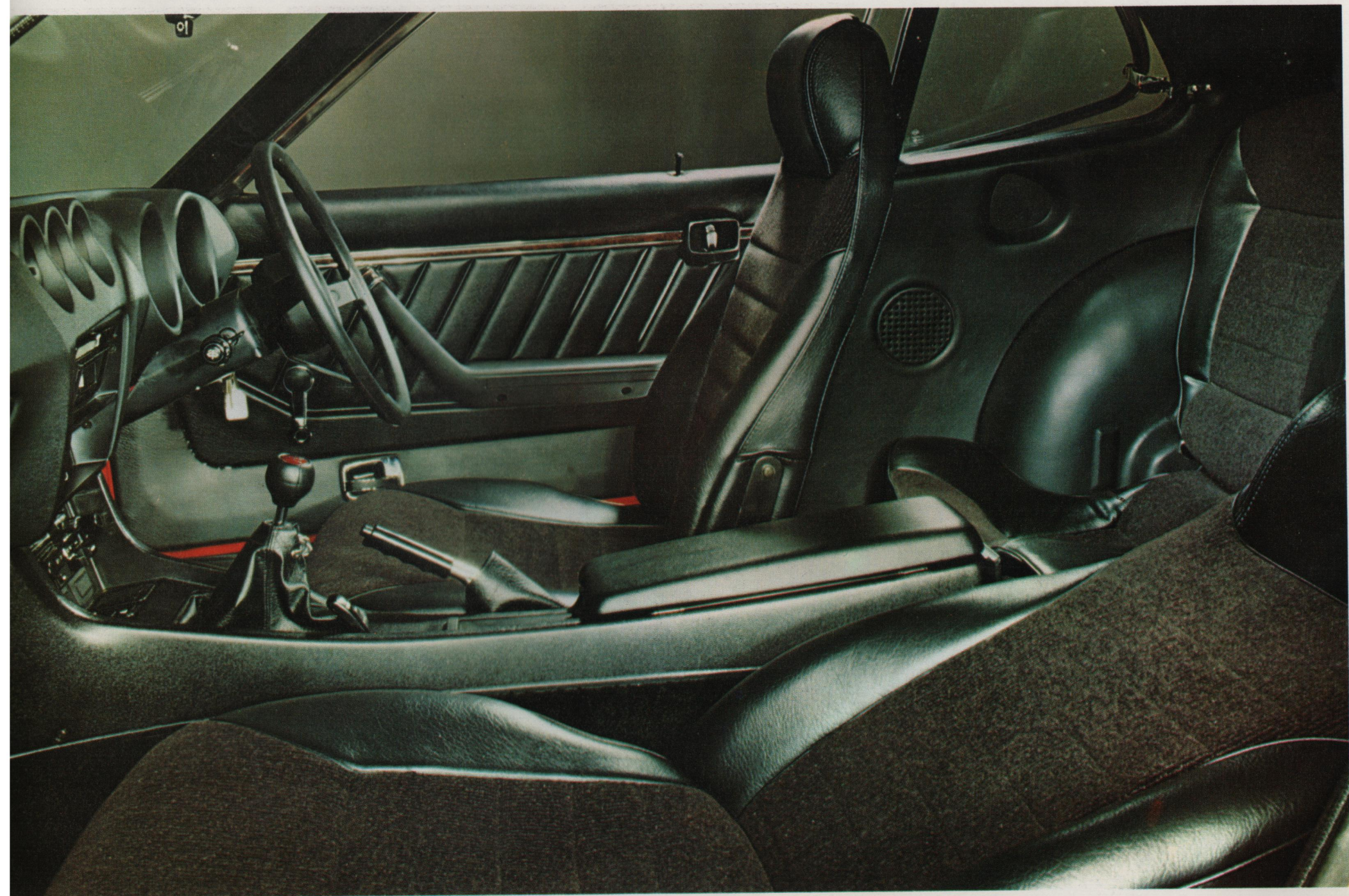
*The spare wh
the platform,*

As with the 2-seater, Datsun's attention to detail is thorough in the 260Z 2+2. The wide opening doors have operating levers for front AND rear passengers and arm rests with built-in door pulls. A steering column stalk controls lights, wipers and washers. Rear three-quarter windows are hinged for additional ventilation.

Similar attention has been paid to the under-bonnet layout. Even if you don't do your own maintenance you'll appreciate the neat design and complete accessibility of service items.

The 260Z sports and 2+2 are classic high performance cars. They combine style and luxury with practicality and reliability—qualities worthy of the world's best selling sports cars.





BISHOPS GARAGES

CIRCUS GARAGE

**21/29 PRESTON ROAD
BRIGHTON 685985**

ENGINE:

Cylinders 6, in line
Main bearings 7
Bore 83.0mm (3.27in)
Stroke 79.0mm (3.11in)
Capacity 2565cc (157 cu.in.)
Max. power (DIN) 150bhp/5400rpm
Max. torque (DIN) 158lb.ft./4400rpm
Valve gear Single overhead camshaft with duplex chain drive. Finger-type rockers.

Lubrication Gear-type pump. Replaceable cartridge filter
Carburettors 2 Hitachi HMB46W (SU-type)
Fuel pump Nikki mechanical

TRANSMISSION:

Clutch Single dry plate, diaphragm-spring, 8.86in. dia. hydraulic operation
Gearbox Five-speed, all-synchromesh, floor change
Ratios Top 0.86 2nd 1.90
4th 1.0 1st 2.91
3rd 1.31 Rev 3.38
Final drive Hypoid bevel, ratio 3.70:1

SPECIFICATIONS

SUSPENSION:

Front MacPherson struts, lower transverse and drag links. Coil springs, telescopic dampers, anti-rollbar
Rear MacPherson struts, triangulated lower link, coil springs, telescopic dampers. Drive shafts with two Hooke-type joints

STEERING:

Type Rack and pinion. Wall-to-wall turning circle 36ft (2+2), 31.4ft. (2 seater).

BRAKES:

Type Discs front, drums rear, split-circuit tandem-piston master cylinder, vacuum servo, fail-safe pressure-regulating valve in rear brake line
Size Front, 10.67in. dia.
Rear, 9.0in. dia. x 1.57in. wide shoes

WHEELS:

Type Light Alloy, 5.5J rims
Tyres Radial-ply, tubeless, 195/70 VR 14

EQUIPMENT:

Alternator Hitachi, 60-amp
Battery 12-volt, 60Ah
Headlamps Lucas sealed-beam, total wattage 150/100
Fuses 12, plus 2 fusible links protecting charging and ignition circuits

SERVICE CAPACITIES

Fuel 14.3 gallons (65 litres)
Coolant 16.5 pints (9.4 litres)
Sump & filter 7 pints (4 litres)
Gearbox 3.5 pints (2 litres)
Final drive 2.2 pints (1.3 litres)

DIMENSIONS:

	2+2	2-seater
Length overall	14ft.7in. (444.5cm)	13ft.6in. (411.5cm)
Width overall	5ft.5½in. (166cm)	5ft.4¼in. (163.2cm)
Height overall	4ft.3in. (129.5cm)	4ft.2½in. (128.25cm)
Track, front	4ft.5¼in. (135.25cm)	4ft.5¼in. (135.25cm)
Track, rear	4ft.5in. (134.5cm)	4ft.5¼in. (135.25cm)
Wheelbase	8ft.6½in. (260.5cm)	7ft.6¾in. (230.5cm)
Ground Clearance	6¼in. (15.5cm) minimum	6¼in. (15.5cm) minimum
Kerb Weight	2668lbs. (1210Kg.)	2491lbs. (1130Kg.)



DATSUN UK LIMITED, DATSUN HOUSE · NEW ROAD · WORTHING · BN13 3HD · SUSSEX



DATSUN U.K. LIMITED reserves the right to vary any specification with or without notice at any time. Although every effort is made to ensure the accuracy of any specification or description contained in this publication, neither the Company nor the Dealer shall be responsible for any inaccuracy.

This publication does not constitute an offer of sale, and before purchase of any model full consultation with the Dealer should be undertaken.