

***DATSUN***





# Before you take a look at the Cars,

On the following pages you'll see the full range of Datsun cars. You'll find facts and figures, and all the ingredients that go to make up a Datsun.

But, on these pages, we'd like to tell you a little about the story behind each Datsun, and the people who engineer them with such fine quality, the Nissan Motor Company Limited.

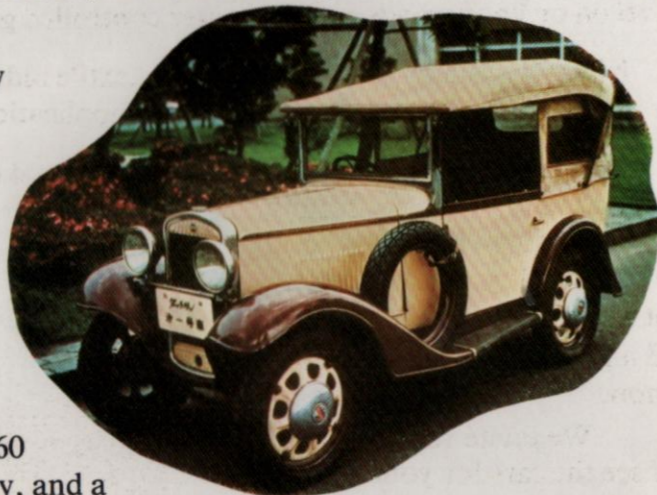
Nissan was formed in Japan some 44 years ago, in 1933, and within two years Datsuns were being mass-produced and exported in small numbers.

In the early 1950's, the factory was still relatively small when Nissan began building Austins under Licence.. and investing in a future that was to take it to the top of vehicle manufacturing to become the 4th largest vehicle manufacturer in the world.

Since the early days, over 6 million Datsuns have been exported to more than 130 countries.

In 1971, Datsun U.K. Limited was formed to bring Datsuns into Britain. Over the years more than 360 Datsun dealerships have been established in this country, and a vast computerised parts and service network has been put into operation. A new headquarters complex with a parts warehouse carrying £5m. worth of spares has been built at Worthing in Sussex. Port facilities have been established and developed at Middlesbrough and Southampton.

And over 350,000 Datsuns have been sold.



# take a look at Datsun.

As you'll see in this booklet, there are many kinds of Datsun cars.

What you'll not see is the other side of Nissan. The company has nine modern manufacturing plants throughout Japan. Last year they built a record 2,375,000 vehicles.

Nissan built the rocket that launched Japan's first scientific satellite into orbit. And Nissan build mini-buses to transport visitors around Kenya's national parks. And develop futuristic vehicles that can travel on ordinary roads and computer controlled guideways.

Nissan produce "jet looms" for the textile industries of the world; Nissan makes boats for pleasure use and marine engines for multi-purpose application. So you can see that Nissan does a lot of things.

What Nissan does for the motorist is to make some of the best, most carefully produced cars in the world, using the latest technology to produce vehicles that are safe and rewarding to drive, and have a reliability that is second to none.

We invite you to turn the pages and see the cars for yourself.



DATSUN U.K. HEADQUARTERS AT WORTHING, SUSSEX.



# Cherry F11 saloons

Latest in a line of world famous 1-litre economy cars from Datsun. Compact, stylish and fully equipped 4-seaters, powered by reliable 988 c.c. engine. Light and easy to drive, with rack and pinion steering, power assisted brakes and fully independent suspension. All models are equipped with tinted glass, head restraints, reversing lights, hazard flashers, 2-speed wipers, electric washers, etc.

GLS models feature cloth upholstery, reclining front seats, radial tyres, cigar lighter and much more.



## SPECIFICATIONS

- ENGINE:**  
Transverse 4 Cylinder OHV. 988cc.  
45 bhp (DIN) at 5600 rpm.
- GEARBOX:**  
Manual 4 speed all synchromesh.
- CLUTCH:**  
Diaphragm spring, mechanical operation.
- SUSPENSION:**  
Front — Independent coil springs, damper struts, lower wishbones, anti-roll bar. Rear — Independent coil springs, trailing arms.
- STEERING:**  
Rack and pinion.
- BRAKES:**  
Front disc, rear drum. Dual circuits. Servo assistance.
- WHEELS/TYRES:**  
4½J steel. GLS Models 155SR 12 Radial. L Model 600S 12 Crossply.

# Cherry F11 coupe

Exciting hatchback coupe combining stylish good looks with the practical virtues of a load carrier. Proven 1171 c.c. engine gives the coupe a top speed of up to 93 m.p.h., lively acceleration AND around 40 m.p.g. in normal driving. The hatchback rear window opens on to useful 15.7 cu. ft. luggage area or with the rear seat folded, a cavernous load space almost 5 ft. long! Luxury equipment includes tinted glass, reclining front seats, cloth upholstery, rev counter, heated rear window and lots more.



## SPECIFICATIONS

- ENGINE:**  
Transverse 4 Cylinder OHV. 1171cc.  
52bhp (DIN) at 5600 rpm.
- GEARBOX:**  
Manual 4 speed all synchromesh.
- CLUTCH:**  
Diaphragm spring, mechanical operation.
- SUSPENSION:**  
Front — Independent coil springs, damper struts, lower wishbones, anti-roll bar. Rear — Independent coil springs, trailing arms.
- STEERING:**  
Rack and pinion.
- BRAKES:**  
Front disc, rear drum. Dual circuits. Servo assistance.
- WHEELS/TYRES:**  
4½J steel. 155SR 12 Radial.

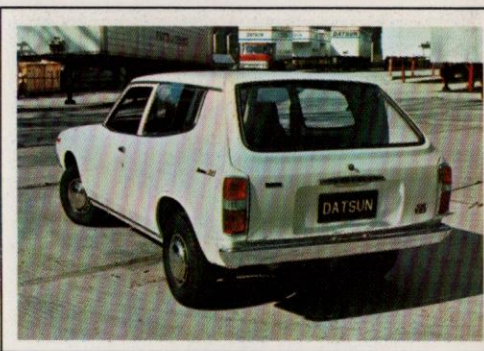




# Cherry FII estate

*Stylish 3-door hatchback with the advantages of a spacious estate car. With the rear seat folded down it will swallow 52.6 cu. ft. of luggage! With 4 people, you STILL have 34 cu. ft of space! World-famous Cherry 988 c.c. engine gives a top speed in the upper 80's and around 40 m.p.g. in normal driving. There are GL and GLS models, both fully equipped with reclining front seats, head restraints, fitted carpets, heated rear window, power assisted brakes and so on.*

*GLS models also feature radial tyres, cigar lighter, oddment trays, etc.*



## SPECIFICATIONS

### ENGINE:

Transverse 4 Cylinder OHV. 988cc.  
45bhp (DIN) at 5600rpm.

### GEARBOX:

Manual 4 speed all synchromesh.

### CLUTCH:

Diaphragm spring, mechanical  
operation.

### SUSPENSION:

Front — Independent coil springs,  
damper struts, lower wishbones,  
anti-roll bar. Rear — Rigid axle leaf  
springs, De Carbon dampers.

### STEERING:

Rack and pinion.

### BRAKES:

Front disc, rear drum. Dual circuits.  
Servo assistance.

### WHEELS/TYRES:

4½J steel. GLS Model 155SR 12  
Radial. GL Model 600S 12 Crossply.



## SPECIFICATIONS

### ENGINE:

4 Cylinder OHV. 1171cc. 65bhp  
(DIN) at 6000rpm.

### GEARBOX:

Manual 4' speed all synchromesh.  
Automatic optional.

### CLUTCH:

Diaphragm spring, mechanical  
operation.

### SUSPENSION:

Front — Independent coil springs,  
MacPherson struts, lower links  
anti-roll bar. Rear — Live axle leaf  
springs.

### STEERING:

Recirculating ball.

### BRAKES:

Front disc, rear drum. Dual circuits.  
Servo assistance.

### WHEELS/TYRES:

4½J steel. 155SR 13 Radial.



# Sunny 120Y saloons

*Extremely successful quality built 2 door and 4 door saloons giving first class motoring at a sensible price.*

*1171 c.c. engine gives 90 m.p.h. performance with up to 40 m.p.g. economy on low grade petrol. Light and precise controls make driving a pleasure. The interior is comfortable and luxurious with reclining seats, cloth upholstery, fitted carpets and superior equipment. Tinted glass, heated rear window, head restraints, clock, two-speed wipers, electric washers, radial tyres and much more, all fitted as standard.*



# Sunny 120Y coupe

Attractive 3-door version of best-selling Sunny with hatchback style tailgate and fold-down rear seat giving luggage space advantages in a stylish luxury coupe. Famous Sunny engine gives lively performance with exceptional economy and reliability. Equipment includes tinted glass, reclining front seats, cloth upholstery, heated rear window, rev counter, cigar lighter, two-speed wipers, electric washers, reversing lights and much more.



## SPECIFICATIONS

### ENGINE:

4 Cylinder OHV. 1171cc. 65bhp (DIN) at 6000rpm.

### GEARBOX:

Manual 4 speed all synchromesh.

### CLUTCH:

Diaphragm spring, mechanical operation.

### SUSPENSION:

Front — Independent coil springs, MacPherson struts, lower links anti-roll bar. Rear — Live axle leaf springs.

### STEERING:

Recirculating ball.

### BRAKES:

Front disc, rear drum. Dual circuits. Servo assistance.

### WHEELS/TYRES:

4 1/2J steel. 155SR 13 Radial.



## SPECIFICATIONS

### ENGINE:

4 Cylinder OHV. 1171cc. 65bhp (DIN) at 6000rpm.

### GEARBOX:

Manual 4 speed all synchromesh.

### CLUTCH:

Diaphragm spring, mechanical operation.

### SUSPENSION:

Front — Independent coil springs, MacPherson struts, lower links, anti-roll bar. Rear — Live axle leaf springs.

### STEERING:

Recirculating ball.

### BRAKES:

Front disc, rear drum. Dual circuits. Servo assistance.

### WHEELS/TYRES:

4 1/2J steel. 155SR 13 Radial.



# Sunny 120Y estate

Highly practical 5-door estate car. Wide, high lift tailgate gives easy access to spacious luggage area extending to a full 5 ft. with the rear seat folded. Modern styling combines good looks with safety.

Comprehensive specification includes power-assisted brakes, tinted glass, clock, cigar lighter and many more luxury features.

Performance and economy match the saloon and, naturally, it has that famous Datsun reliability.



# Violet 140J/160J saloons & 160J SSS coupe

Luxury family saloons with choice of 1.4 or 1.6 litre engines. Crisp body styling and refined interior with cloth upholstery and a full complement of luxury equipment. Accent on comfort and ease of driving. Economical motoring in style.

Also available 160J SSS coupe combining sports car performance and handling with saloon car comfort and space. Fully independent suspension and sporting 5-speed gearbox add to the appeal of this car.



## SPECIFICATIONS

**ENGINE:** 4 Cylinder OHC. 140J — 1428cc. 80bhp (DIN) at 6000rpm. 160J — 1595cc. 90bhp (DIN) at 6000rpm. 160J SSS — 95bhp (DIN) at 6000rpm.

**GEARBOX:** 140J/160J — Manual 4 speed all synchromesh. 160J SSS — 5 speed.

**CLUTCH:** Diaphragm spring, hydraulic operation.

**SUSPENSION:** 140J/160J: Front — Independent coil springs, MacPherson struts, lower links, anti-roll bar. Rear — Live axle, leaf springs. 160J SSS: Front — Independent coil springs, MacPherson struts, lower links, anti-roll bar. Rear — Independent coil springs, semi-trailing arms.

**STEERING:** Recirculating ball.

**BRAKES:** Front disc, rear drum. Dual circuits. Servo assistance.

**WHEELS/TYRES:** 4 1/2 J steel. 165SR 13 Radial.



## SPECIFICATIONS

**ENGINE:** 4 Cylinder OHC. 1770cc. 180B — 88bhp (DIN) at 5600rpm. 180B SSS — 90bhp (DIN) at 5800rpm.

**GEARBOX:** 180B — Manual 4 speed all synchromesh. 180B SSS — 5 speed. Automatic optional on saloon.

**CLUTCH:** Diaphragm spring, hydraulic operation.

**SUSPENSION:** Front — Independent coil springs, damper struts. Rear — Independent coil springs, semi-trailing arms.

**STEERING:** Recirculating ball.

**BRAKES:** Front disc, rear drum. Dual circuits. Servo assistance.

**WHEELS/TYRES:** 5J steel sculptured. 180B — 165SR 14 Radial. 180B SSS 185/70 HR 14 Radial.

# Bluebird 180B Mk II saloon & SSS coupe

Spacious new family saloon with elegant styling and refined interior. Excellent performance with economy from 1.8 litre engine renowned for its reliability. Fully independent suspension and power-assisted brakes. Comfortable seating with brushed nylon cloth upholstery, and superbly equipped with a host of luxury standard features.

Also available 180B SSS — exciting 2-door coupe with five-speed gearbox and engine specially tuned for performance.





# Bluebird 180B MkII estate

The 5-door estate version of the Bluebird provides executive style motoring with the practical advantages of a spacious load carrier. An area 65 inches long and up to 52 inches wide is available with the rear seat folded, to take masses of luggage or equipment.

Standard features include MW/LW push-button radio, tinted glass, two-speed wipers plus intermittent wash/wipe, electric clock, cigar lighter, rear screen wiper and washer, wing mirrors and so on.



## SPECIFICATIONS

### ENGINE:

4 Cylinder OHC. 1770cc. 88bhp (DIN) at 5600rpm.

### GEARBOX:

Manual 4 speed all synchromesh.

### CLUTCH:

Diaphragm spring, hydraulic operation.

### SUSPENSION:

Front — Independent coil springs, damper struts. Rear — Live axle, leaf springs.

### STEERING:

Recirculating ball.

### BRAKES:

Front disc, rear drum. Dual circuits. Servo assistance.

### WHEELS/TYRES:

5J steel sculptured. 165SR 13 Radial.



## SPECIFICATIONS

### ENGINE:

6 Cylinder OHC. 1998cc. 108bhp (DIN) at 5600rpm.

### GEARBOX:

Manual 4 speed all synchromesh. Automatic optional.

### CLUTCH:

Diaphragm spring, hydraulic operation.

### SUSPENSION:

Front — Independent struts with coil springs and torsion bars. Rear — 4 link coil suspension.

### STEERING:

Recirculating ball.

### BRAKES:

Front disc, rear drum. Dual circuits. Servo assistance.

### WHEELS/TYRES:

5.5J Alloy. 185/70 HR 14 Steel Radial



# Laurel Six

Superb new luxury saloon, powered by a smooth 2 litre, 6 cylinder engine. Gives effortless 100 m.p.h. performance with excellent economy on low grade petrol. The roomy interior comfortably seats 5 adults in luxurious cloth upholstered seating, and there's a host of standard equipment. Stereo cassette player, push-button radio, quartz clock, tinted glass, etc. are some of the luxury features in this impressive executive saloon.



# 260C MkII saloon & estate

*Prestige top-of-the-range cars for the motorist who wants the best of all worlds. There is a 260C executive saloon, with electric windows, stereo cassette player, radio, tinted glass and so on and a 260C estate car combining luxury with vast carrying capacity. Both models give relaxed 100 m.p.h. performance from a smooth 6 cylinder 2.6 litre engine and both have the famous Datsun qualities of reliability, ease of maintenance and value for money.*



## SPECIFICATIONS

### ENGINE:

6 Cylinder OHC. 2565cc 118bhp (DIN) at 5200rpm.

### GEARBOX:

Manual 4 speed all synchromesh. Automatic optional.

### CLUTCH:

Diaphragm spring, hydraulic operation.

### SUSPENSION:

Front — Independent coil springs, double acting shock absorbers.  
Rear — Leaf springs, double acting shock absorbers.

### STEERING:

Recirculating ball. Power assisted.

### BRAKES:

Front disc, rear drum. Dual circuit. Servo assistance.

### WHEELS/TYRES:

5J steel. 195/70 HR 14 Radial.



## SPECIFICATIONS

### ENGINE:

6 Cylinder OHC. 2565cc 150bhp (DIN) at 5400rpm.

### GEARBOX:

Manual 5 speed all synchromesh.

### CLUTCH:

Diaphragm spring, hydraulic operation.

### SUSPENSION:

Front — Independent coil springs, MacPherson struts, lower links, anti-roll bar. Rear — Independent coil springs, MacPherson struts, lower links, anti-roll bar.

### STEERING:

Rack and pinion.

### BRAKES:

Front disc, rear drum. Dual circuits. Servo assistance.

### WHEELS/TYRES:

5½J Light Alloy. 195/70 VR 14 Radial.

# 260Z 2+2 & 2seater

*The world's best selling sports car. This classic high performance Grand Tourer is available as a 2-seater or a 2+2. Powered by a 150 bhp (DIN) 2.6 litre engine the 260Z has 125 m.p.h. performance with vivid acceleration to match. Fully independent suspension and precise 5-speed gearbox make these cars a joy to drive. Both, naturally, come fully equipped with luxury features like combined radio/cassette player, tinted glass, cloth upholstery, etc.*







### Cherry F11 Van

*Tough, practical, small commercial vehicle, using proven mechanics for outstanding reliability. Spacious cargo area has a payload capacity of over 7 cwt.*

*The Cherry van is comfortable and equipped like a small saloon with bucket seats, head restraints, 2-speed wipers, electric washers, reversing lights, hazard flashers and so on.*

<b>Engine:</b>	Transverse 4 Cylinder OHV. 988cc. 45bhp (DIN) at 5600 rpm.
<b>Gearbox:</b>	Manual 4 speed all synchromesh.
<b>Suspension:</b>	Front—Independent, rear—rigid axle.
<b>Brakes:</b>	Drum front and rear.
<b>Wheels/Tyres:</b>	4½J steel 6.00 12 Crossply.



### Sunny 120Y Van

*Compact, hard-working van, powered by world famous 1171 c.c. engine giving reliable, economical performance. Low, flat cargo area 5 feet long, with high-lift tailgate providing easy access to the load area. Light responsive controls and well equipped comfortable interior make driving easy and enjoyable.*


<b>Engine:</b>	4 Cylinder OHV. 1171cc. 65bhp (DIN) at 6000 rpm.
<b>Gearbox:</b>	Manual 4 speed all synchromesh.
<b>Suspension:</b>	Front—Independent, rear—live axle.
<b>Brakes:</b>	Disc front, drum rear.
<b>Wheels/Tyres:</b>	4J steel 6.00 12 Crossply.



### 1-Ton Pick-up

*Sturdy, multi-purpose vehicle, renowned throughout the world for durable, trouble-free performance. Powerful 1500 c.c. engine and heavy duty suspension cope with the toughest working conditions. Spacious pick-up load area takes a full 20 cwt. Power-assisted brakes, reversing lights, wing mirrors, 2-speed wipers and electric washers are just some of the standard features.*

<b>Engine:</b>	4 Cylinder OHV. 1483cc. 73bhp (DIN) at 5200 rpm.
<b>Gearbox:</b>	Manual 4 speed all synchromesh.
<b>Suspension:</b>	Front—Torsion bar, rear—rigid axle.
<b>Brakes:</b>	Drum front and rear. Servo assistance.
<b>Wheels/Tyres:</b>	4½J steel. 6.70 14 Crossply.

**DATSUN UK LIMITED**, DATSUN HOUSE · NEW ROAD · WORTHING · SUSSEX 

Designed & Printed by Datsun U.K. Ltd at Worthing

DATSUN U.K. LIMITED reserves the right to vary any specification with or without notice at any time. Although every effort is made to ensure the accuracy of any specification or description contained in this publication, neither the Company nor the Dealer shall be responsible for any inaccuracy.

This publication does not constitute an offer of sale, and before purchase of any model full consultation with the Dealer should be undertaken.