

DATSUN

OCTOBER 1978

Before you take a look at the Cars,

On the following pages you'll see the full range of Datsun cars. You'll find facts and figures, and all the ingredients that go to make up a Datsun.

But, on these pages, we'd like to tell you a little about the story behind each Datsun, and the people who engineer them with such fine quality, the Nissan Motor Company Limited.

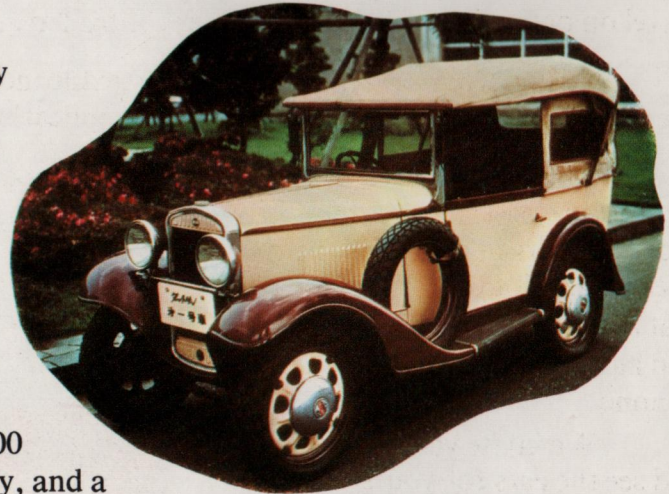
Nissan was formed in Japan some 45 years ago, in 1933, and within two years Datsuns were being mass-produced and exported in small numbers.

In the early 1950's, the factory was still relatively small when Nissan began building Austins under Licence.. and investing in a future that was to take it to the top of vehicle manufacturing to become the 4th largest vehicle manufacturer in the world.

Since the early days, over 7 million Datsuns have been exported to more than 130 countries.

In 1971, Datsun U.K. Limited was formed to bring Datsuns into Britain. Over the years more than 400 Datsun dealerships have been established in this country, and a vast computerised parts and service network has been put into operation. A new headquarters complex with a parts warehouse carrying £8m. worth of spares has been built at Worthing in Sussex. Port facilities have been established and developed at Middlesbrough and Southampton.

And over 430,000 Datsuns have been sold.



take a look at Datsun.

As you'll see in this booklet, there are many kinds of Datsun cars.

What you'll not see is the other side of Nissan. The company has nine modern manufacturing plants throughout Japan. Last year they built nearly 2,300,000 vehicles.

Nissan built the rocket that launched Japan's first scientific satellite into orbit. And Nissan build mini-buses to transport visitors around Kenya's national parks. And develop futuristic vehicles that can travel on ordinary roads and computer controlled guideways.

Nissan produce "jet looms" for the textile industries of the world; Nissan makes boats for pleasure use and marine engines for multi-purpose application. So you can see that Nissan does a lot of things.

What Nissan does for the motorist is to make some of the best, most carefully produced cars in the world, using the latest technology to produce vehicles that are safe and rewarding to drive, and have a reliability that is second to none.

We invite you to turn the pages and see the cars for yourself.



DATSUN U.K. HEADQUARTERS AT WORTHING, SUSSEX.

Cherry FII saloons

Compact, stylish and fully equipped 4-seaters, powered by reliable 988 c.c. engine. Light and easy to drive, with rack and pinion steering, power assisted brakes and fully independent suspension. All models are equipped with tinted glass, head restraints, reversing lights, hazard flashers, 2-speed wipers, electric washers, etc.

GLS models feature cloth upholstery, reclining front seats, radial tyres, cigar lighter and much more.

Also available new semi-automatic transmission models powered by 1171 cc engine.



SPECIFICATIONS

ENGINE:

Transverse 4 Cylinder OHV
Manual—988cc 45bhp(DIN) at 5600rpm
Semi-auto—1171cc 52bhp(DIN) at 5600rpm

GEARBOX:

Manual 4 speed all synchromesh
Semi-auto—3 speed plus torque converter

CLUTCH:

Diaphragm spring, mechanical operation.

SUSPENSION:

Front and rear — independent coil springs.

STEERING:

Rack and pinion.

BRAKES:

Front disc, rear drum. Dual circuits. Servo assistance.

WHEELS/TYRES:

4½J steel.
GLS Models 155SR 12 Radial
L Model 600S 12 Crossply.

Cherry F11 coupe

Exciting hatchback coupe combining stylish good looks with the practical virtues of a load carrier. Proven 1171 c.c. engine gives the coupe a top speed of up to 93 m.p.h., lively acceleration AND excellent economy. The hatchback rear window opens on to a useful 15.7 cu.ft. luggage area or with the rear seat folded, a cavernous load space almost 5 ft. long!

Luxury equipment includes tinted glass, reclining front seats, cloth upholstery, rev counter, heated rear window and lots more.



SPECIFICATIONS

ENGINE:

Transverse 4 Cylinder OHV. 1171cc.
52bhp (DIN) at 5600 rpm.

GEARBOX:

Manual 4 speed all synchromesh.

CLUTCH:

Diaphragm spring, mechanical operation.

SUSPENSION:

Front — Independent coil springs, damper struts, lower wishbones, anti-roll bar. Rear — Independent coil springs, trailing arms.

STEERING:

Rack and pinion.

BRAKES:

Front disc, rear drum. Dual circuits.
Servo assistance.

WHEELS/TYRES:

4½J steel. 155SR 12 Radial.



Cherry F11 GLS estate

Stylish 3-door hatchback with the advantages of a spacious estate car. With the rear seat folded down it will swallow 52.6 cu. ft. of luggage! With 4 people, you STILL have 34 cu. ft of space! World-famous Cherry 988 c.c. engine gives a top speed in the upper 80's with excellent economy. Reclining front seats, head restraints, fitted carpets, heated rear window, power assisted brakes are just part of the comprehensive standard equipment.



SPECIFICATIONS

ENGINE:

Transverse 4 Cylinder OHV. 988cc.
45bhp (DIN) at 5600rpm.

GEARBOX:

Manual 4 speed all synchromesh.

CLUTCH:

Diaphragm spring, mechanical
operation.

SUSPENSION:

Front — Independent coil springs,
damper struts, lower wishbones,
anti-roll bar. Rear — Rigid axle leaf
springs, De Carbon dampers.

STEERING:

Rack and pinion.

BRAKES:

Front disc, rear drum. Dual circuits.
Servo assistance.

WHEELS/TYRES:

4½J steel. 155SR 12 Radial.

New Sunny saloons

In great shape for the 80's with new styling, lower waistline and excellent all-round visibility. New interior is quieter, more spacious and more luxurious with 'soft touch' cloth upholstery and deep pile carpeting. There's a new quartz clock, three speed wipers with intermittent wipe, side window demisters, choke and handbrake warning lights and so on.

There's advanced four-link coil rear suspension for a smooth ride and surefooted roadholding plus the world famous Sunny engine giving outstanding economy and reliability.



SPECIFICATIONS

ENGINE:

4 Cylinder OHV 1171cc. 52bhp (DIN) at 6000rpm.

GEARBOX:

Manual 4 speed all synchromesh

CLUTCH:

Diaphragm spring, mechanical operation.

SUSPENSION:

Front—Independent coil springs MacPherson struts, lower links, anti-roll bar. Rear—Four-link coil spring.

STEERING:

Recirculating ball.

BRAKES:

Front disc, rear drum. Dual circuits Servo assistance.

WHEELS/TYRES:

4½J steel. 155SR 13 Radial.



New Sunny coupe

Elegant 3-door hatchback with sleek, distinctive lines. New 1400cc engine, slick five-speed gearbox and special four-link coil rear suspension give the New Sunny coupe sporting performance with enjoyable handling. The comfortable interior is luxuriously equipped with 'soft touch' cloth upholstery, wall-to-wall carpeting and the latest features like a special 'walk-in' device for easy entry to the rear seats. The hatchback style tailgate gives access to the spacious luggage area. Operate a 'one touch' control and the rear seats fold individually to give enormous carrying capacity.



SPECIFICATIONS

ENGINE:

4 Cylinder OHV 1397cc. 63bhp (DIN) at 6000rpm.

GEARBOX:

Manual 5 speed all synchromesh.

CLUTCH:

Diaphragm spring, mechanical operation.

SUSPENSION:

Front—Independent coil springs. MacPherson struts, lower links, anti-roll bar. Rear—Four-link coil spring.

STEERING:

Recirculating ball.

BRAKES:

Front disc, rear drum. Dual circuits Servo assistance.

WHEELS/TYRES:

4½J steel. 155SR 13 Radial.

New Sunny estate



An attractive and highly practical vehicle for the motorist who needs extra space. There are five doors including a wide, lift-up tailgate so that loading it with passengers or luggage is no problem. A 'one touch' control lets you fold down the rear seat to give a remarkable loading area over five feet long. New equipment includes three speed wipers including intermittent wipe, side window demisters, quartz clock, a useful luggage room light, choke and handbrake warning lights as well as standard features like MW/LW radio, tinted glass, heated rear window, wall-to-wall carpeting and so on.

SPECIFICATIONS

ENGINE:

4 Cylinder OHV 1171cc. 52bhp (DIN) at 6000rpm.

GEARBOX:

Manual 4 speed all synchromesh.

CLUTCH:

Diaphragm spring, mechanical operation.

SUSPENSION:

Front — Independent coil springs, MacPherson struts, lower links, anti-roll bar. Rear — Live axle leaf springs.

STEERING:

Recirculating ball.

BRAKES:

Front disc, rear drum. Dual circuits. Servo assistance.

WHEELS/TYRES:

4½J steel. 155SR 13 Radial.





Bluebird 160B/180B Mk II saloon & 180B SSS coupe

Spacious family saloons with choice of 1.6 or 1.8 litre engine giving excellent performance with economy and reliability. Elegant styling and refined, comfortable interior with brushed nylon cloth upholstery and a host of luxury standard features.

Also available 180B SSS — exciting 2-door coupe with five speed gearbox and engine specially tuned for performance.

SPECIFICATIONS

ENGINE: 4 Cylinder OHC

160B — 1595cc, 81 bhp (DIN) at 5600 RPM

180B — 1770cc, 88 bhp (DIN) at 5600 RPM

180B SSS — 1770cc, 90 bhp (DIN) at 5800 RPM

GEARBOX: 160B/180B — Manual 4 speed all synchromesh. 180B SSS — 5 speed. Automatic optional on 180B saloon.

CLUTCH: Diaphragm spring, hydraulic operation.

SUSPENSION: Front — Independent coil springs, damper struts. Rear — Independent coil springs, semi-trailing arms.

STEERING: Recirculating ball.

BRAKES: Front disc, rear drum: Dual circuits. Servo assistance.

WHEELS/TYRES: 5J steel sculptured.

160B/ 180B — 165SR 14 Radial. 180B SSS

185/70 HR 14 Radial.



Violet 140J/160J saloons & 160J SSS hatchback

Compact new family saloons with choice of 1.4 or 1.6 litre engines. Elegant new styling gives improved all round visibility. The luxurious and well equipped interior is quieter and more spacious. A superb new family saloon providing economical motoring in style.

Also available 160J SSS, an exciting hatchback coupe combining sports car performance and handling with saloon car comfort and space. Fully independent suspension and slick 5-speed gearbox add to the appeal of this stylish new hatchback.



SPECIFICATIONS

ENGINE: 140J - 4 cylinder OHV - 1397cc. 63bhp (DIN) at 5600 rpm. 160J - 4 cylinder OHC - 1595cc. 81bhp (DIN) at 5600rpm. 160J SSS - 4 cylinder OHC - 1595cc. 87bhp (DIN) at 5800rpm.

GEARBOX: 140J/160J - Manual 4 speed all synchromesh. 160J SSS - Manual 5 speed all synchromesh.

CLUTCH: Dry single plate, diaphragm-spring

SUSPENSION: Front: Independent struts with coil springs. Rear: Four-link coil spring

STEERING: Recirculating ball

BRAKES. Front disc, rear drum. Dual circuit. Servo assistance. Anti-skid NP valve

WHEELS/TYRES: 4½J steel. 165 SR 13 steel radial

Bluebird 180B MkII estate

The 5-door estate version of the Bluebird provides executive style motoring with the practical advantages of a spacious load carrier. An area 65 inches long and up to 52 inches wide is available with the rear seat folded, to take masses of luggage or equipment.

Standard features include MW/LW push-button radio, tinted glass, two-speed wipers plus intermittent wash/wipe, electric clock, cigar lighter, rear screen wiper and washer, and so on.



SPECIFICATIONS

ENGINE:

4 Cylinder OHC. 1770cc. 88bhp (DIN) at 5600rpm.

GEARBOX:

Manual 4 speed all synchromesh.

CLUTCH:

Diaphragm spring, hydraulic operation.

SUSPENSION:

Front — Independent coil springs, damper struts. Rear — Live axle, leaf springs.

STEERING:

Recirculating ball.

BRAKES:

Front disc, rear drum. Dual circuits. Servo assistance.

WHEELS/TYRES:

5J steel sculptured. 165SR 13 Radial.



Laurel Six

Superb luxury saloon, powered by a smooth 2 litre, 6 cylinder engine. Gives effortless 100 m.p.h. performance with excellent economy on low grade petrol. The roomy interior comfortably seats 5 adults in luxurious cloth upholstered seating and there's a host of standard equipment. Stereo cassette player, push-button radio, quartz clock, tinted glass, etc. are some of the luxury features in this impressive executive saloon.

SPECIFICATIONS

ENGINE:

6 Cylinder OHC. 1998cc. 108bhp (DIN) at 5600rpm.

GEARBOX:

Manual 4 speed all synchromesh. Automatic optional.

CLUTCH:

Diaphragm spring, hydraulic operation.

SUSPENSION:

Front — Independent struts with coil springs and torsion bars.
Rear — 4 link coil suspension.

STEERING:

Recirculating ball.

BRAKES:

Front disc, rear drum. Dual circuits. Servo assistance.

WHEELS/TYRES:

5.5J Alloy. 185/70 HR 14 Steel Radial



280C saloon & estate

Prestige new top-of-the-range cars for the motorist who wants the best of all worlds. There is a 280C executive saloon, with electric windows, stereo cassette player, radio, tinted glass and so on and a 280C estate car combining luxury with vast carrying capacity. Both models give relaxed 100 m.p.h. performance from a smooth new 6 cylinder 2.8 litre engine and both have the famous Datsun qualities of reliability, ease of maintenance and value for money.



SPECIFICATIONS

ENGINE:

6 Cylinder OHC. 2753cc 125bhp (DIN) at 4800rpm.

GEARBOX:

Manual 4 forward speeds all synchromesh. Automatic optional

CLUTCH:

Dry single plate, diaphragm-spring

SUSPENSION:

Front: Independent coil springs and hydraulic double-acting shock absorbers. Torsion bar stabilizer. Rear: Leaf springs with hydraulic double-acting shock absorbers.

STEERING:

Recirculating ball. Power assisted.

BRAKES:

Front disc, rear drum. Dual circuit. Servo assistance. Brake fluid warning device. Anti skid NP valve

WHEELS/TYRES:

5J Steel. 195/70 HR-14 Steel radial



260Z 2+2 & 2seater

The world's best selling sports car. This classic high performance Grand Tourer is available as a 2-seater or a 2 + 2. Powered by a 150 bhp (DIN) 2.6 litre engine the 260Z has 125 m.p.h. performance with vivid acceleration to match. Fully independent suspension and precise 5-speed gearbox make these cars a joy to drive. Both, naturally, come fully equipped with luxury features like combined radio/cassette player, tinted glass, cloth upholstery, etc.

SPECIFICATIONS

ENGINE:

6 Cylinder OHC. 2565cc 150bhp (DIN) at 5400rpm.

GEARBOX:

Manual 5 speed all synchromesh.

CLUTCH:

Diaphragm spring, hydraulic operation.

SUSPENSION:

Front — Independent coil springs, MacPherson struts, lower links, anti-roll bar. Rear — Independent coil springs, MacPherson struts, lower links, anti-roll bar.

STEERING:

Rack and pinion.

BRAKES:

Front disc, rear drum. Dual circuits. Servo assistance.

WHEELS/TYRES:

5½J Light Alloy. 195/70 VR 14 Radial.





Cherry F11 Van

Tough, practical, small commercial vehicle, using proven mechanics for outstanding reliability. Spacious cargo area has a payload capacity of over 7 cwt.

The Cherry van is comfortable and equipped like a small saloon with bucket seats, head restraints, 2-speed wipers, electric washers, reversing lights, hazard flashers and so on.

Engine:	Transverse 4 Cylinder OHV. 988cc. 45bhp (DIN) at 5600 rpm.
Gearbox:	Manual 4 speed all synchromesh.
Suspension:	Front—Independent, rear—rigid axle.
Brakes:	Drum front and rear.
Wheels/Tyres:	4½J steel 6.00 12 Crossply.

New Sunny Van

Compact, hard-working van, powered by world famous 1171 c.c. engine giving reliable, economical performance. Low, flat cargo area 5 feet long, with high-lift tailgate providing easy access to the load area. Light responsive controls and well equipped comfortable interior make driving easy and enjoyable.

Engine:	4 Cylinder OHV. 1171cc. 52bhp (DIN) at 6000 rpm.
Gearbox:	Manual 4 speed all synchromesh.
Suspension:	Front—Independent, rear—live axle.
Brakes:	Disc front, drum rear.
Wheels/Tyres:	4½J steel 6.155 Crossply

1 Ton Pick-Up

Sturdy, multi-purpose vehicle, renowned throughout the world for durable, trouble-free performance. Powerful 1500 c.c. engine and heavy duty suspension cope with the toughest working conditions. Spacious pick-up load area takes a full 20 cwt. Power-assisted brakes, reversing lights, 2-speed wipers and electric washers are just some of the standard features.

Engine:	4 Cylinder OHV. 1483cc. 73bhp (DIN) at 5200 rpm.
Gearbox:	Manual 4 speed all synchromesh.
Suspension:	Front—Torsion bar, rear—rigid axle.
Brakes:	Drum front and rear. Servo assistance.
Wheels/Tyres:	4½J steel 6.70 14 Crossply.

Cabstar Hi-deck Pick-up

Drop long wheelbase pick-up with drop sides for easy loading. Cargo area is more than 10 ft. long and has a payload of over 31 cwt. Powerful 2 litre engine and sturdy suspension make light work of heavy loads. Modern cab is spacious and fully equipped with push button radio, two speed wipers, electric washers, cigar lighter and so on. Power assisted brakes, reversing lights and hazard flasher are all standard features.

Engine:	4 Cylinder OHV. 1982cc. 91bhp (DIN) at 4800 rpm.
Gearbox:	Manual 4 speed all synchromesh.
Suspension:	Front—Torsion bar, rear—rigid axle.
Brakes:	Drum front and rear, servo assistance.
Wheels/Tyres:	5½J steel 7.00 15 Crossply.

DATSUN UK LIMITED



DATSUN UK LIMITED,
DATSUN HOUSE, NEW ROAD,
WORTHING, SUSSEX.

Designed & Printed by Datsun UK Ltd. at Worthing.

Datsun policy is one of continuous improvement. The right is reserved to change specifications, colours and prices of the models and items illustrated and described in this publication at any time. Where possible, any such changes which may be introduced after publication of this booklet but before it is supplied will be incorporated herein or announced by means of a notice prominently displayed in Datsun Dealerships at the point of supply. For the latest details always consult your Datsun Dealer.

S24.75M.M/S.X.182/78