



DATSUN

UNITED MOTORS

MAIN DATSUN DEALER
92/108, PINNER ROAD,
HARROW, MIDDLESEX
Tel. 01-427 7156/7
01-863 7339 (Parts)

Bluebird
saloons
coupe-estate



	1.6 LTR SALOON MANUAL	1.8 LTR SALOON MANUAL	1.8 LTR SALOON AUTOMATIC	1.8 LTR ESTATE	1.8 LTR SSS COUPE
Engine:	4 cylinder, in-line, OHC, water cooled				
Type	4 cylinder, in-line, OHC, water cooled				
Bore, mm	83.0	85.0			85.0
Stroke, mm	73.7	78.0			78.0
Capacity, cc	1595	1770			1770
Max. Power bhp/rpm (DIN)	81/5600	88/5600			90/5800
Max. Torque lb.ft./rpm (DIN)	88.9/3600	98.3/3600			100.5/3800
Compression ratio	8.5 to 1				
Fuel pump	Mechanical				
Carburettor	Dual Barrel, down draught				twin SU variable venturi side-draught
Transmission:	4 speed, all synchro				
Type	4 speed, all synchro		3 speed	4 speed all synchro	5 speed all synchro
Ratios 1st	3.382		2.458	3.382	3.382
2nd	2.013		1.458	2.013	2.013
3rd	1.312		1.000	1.312	1.312
4th	1.000		—	1.000	1.000
5th	—		—	—	0.854
Reverse	3.365		2.182	3.365	3.570
Final Drive Ratio	4.111		3.900	4.111	4.111
Clutch	Dry single plate, diaphragm spring				
Suspension:	Independent by coil springs and damper struts				
Front	Independent by coil springs and damper struts				
Rear	Independent by semi-trailing arms with coil springs and damper struts		Rigid axle, semi elliptic springs	Independent by semi-trailing arms with coil springs & damper struts	
Steering:	Recirculating ball, Ratio 15 to 1, turning circle (wall to wall) 36.1 ft.				
Type	Recirculating ball, Ratio 15 to 1, turning circle (wall to wall) 36.1 ft.				
Wheels:	5J 14 Styled Steel				
Tyres	165SR 14 Radial				185/70HR 14 Radial
Brakes:	Disc front, drum rear, independent front and rear hydraulic circuits, vacuum servo, pressure regulating valve. Mechanical handbrake.				
Type	Disc front, drum rear, independent front and rear hydraulic circuits, vacuum servo, pressure regulating valve. Mechanical handbrake.				
Dimensions:	ins				
Overall Length	171.1		173.8		171.1
Overall Width	64.2		56.3		54.3
Overall Height	54.7		56.3		54.3
Wheelbase	98.4		53.1		53.0
Track Front	53.0		53.1		53.0
Rear	6.9		6.7		6.9
Road Clearance	6.9		6.7		6.9
Kerb Weight	2304		2348		2348
Fuel Tank Capacity	13.2		12.3		13.2

1.8 LTR Estate Luggage Compartment

- a) Length (with seat up) 36.6 ins
- b) Length (with seat down) 64.8 ins
- c) Width (max.) 51.6 ins
- d) Height (max.) 31.7 ins

GOVERNMENT FUEL CONSUMPTION TESTS —		
M.P.G. (Litres per 100 Kilometres)		
Town Driving Cycle	Constant 56 m.p.h. (90 km/h)	Constant 75 m.p.h. (120 km/h)
1.6 Litre Sal. 28.2 (10.0)	39.8 (7.1)	29.1 (9.7)
1.8 Litre Sal. M 28.5 (9.9)	39.2 (7.2)	30.1 (9.4)
1.8 Litre Sal. A 28.5 (9.9)	35.8 (7.9)	27.2 (10.4)

GOVERNMENT FUEL CONSUMPTION TESTS —		
M.P.G. (Litres per 100 Kilometres)		
Town Driving Cycle	Constant 56 m.p.h. (90 km/h)	Constant 75 m.p.h. (120 km/h)
1.8 Litre Est. 28.5 (9.9)	37.2 (7.6)	27.2 (10.4)
1.8 Litre SSS (11.3)	41.5 (6.8)	31.0 (9.1)

Datsun policy is one of continuous improvement. The right is reserved to change specifications, colours and prices of the models and items illustrated and described in this publication at any time. Where possible, any such changes which may be introduced after publication of this booklet but before it is supplied will be incorporated herein or announced by means of a notice prominently displayed in Datsun Dealerships at the point of supply. For the latest details always consult your Datsun Dealer.



DATSUN

BLUEBIRD range

Datsun presents the Bluebird series. Four individual models with crisp and elegant styling created to satisfy a demand for distinctive, medium-sized luxury cars with proven dependability.

The range has been evolved from a heritage of three million Bluebirds built since the series was first introduced. Today they embody the advanced technology of the world's fourth largest manufacturer in bold exterior styling, with sharp clean-cut lines.

Comfort, convenience and performance have been enhanced by new or modified features. There's better all-round visibility, greater riding stability, increased roominess for all the family.

But despite major changes, the basic philosophy behind this elegant Bluebird series has remained unchanged — to create a family of cars that is modern in concept and thoroughly dependable.

Mechanically, the Bluebirds are the result of intensive research and development and incorporate sophisticated design features where they are of real benefit, while retaining well proven basic engineering so that genuine reliability can be achieved.

Saloons, estate car or sporting coupe — this series satisfies an extremely wide range of tastes and needs, with each model possessing its own special appeal.



1.6/1.8 litre saloons

You have a choice of engine sizes in the Bluebird Saloons — 1595 cc or 1770 cc, both of modern, overhead camshaft design giving an impressive combination of performance and economy.

Fully independent coil-spring suspension is featured on both saloons so you get comfortable, safe, sure-footed motoring under all conditions.

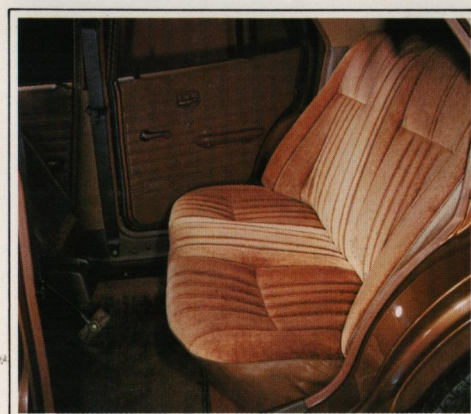
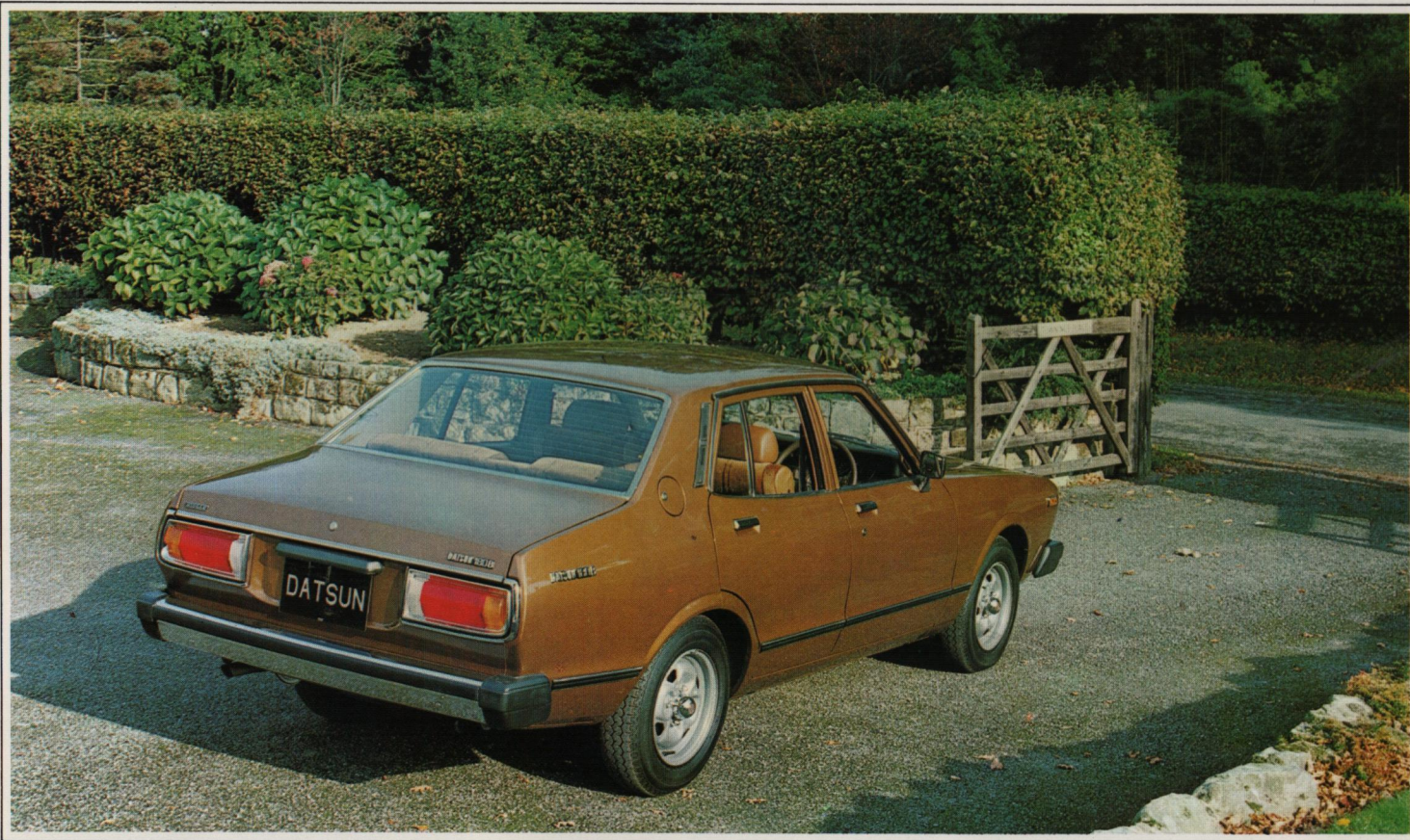
The drive is taken through a four-speed, all-synchromesh gearbox, chosen for its rugged reliability and complimented by road testers for its lightness and precision. The brakes are power assisted, dual circuits, with discs at the front and give reassuring stopping power from all speeds. The interior of the Bluebird Saloon is spacious and luxurious. Body contoured seats, upholstered in

attractive corduroy-type cloth give firm support to keep you comfortable, even on long journeys.

The interior is as relaxing as it's luxurious, with a comprehensive list of standard equipment that includes push-button radio, quartz clock, illuminated cigar lighter, illuminated ignition and steering lock, fully reclining front seats, centre console, vanity mirror, tinted glass, and much more.

For your comfort and safety, there are powerful twin headlamps, automatic reversing lights, hazard flashers, heated rear window and a powerful heating and ventilation system with side window demisters and special ducts for rear seat passengers.

A panel of warning lights indicates choke and handbrake on; a door not properly shut; low level of fuel, brake fluid, battery and screen washer and correct operation of head, tail and stop lights.



1.8 litre SSS coupe

The Bluebird SSS Coupe has a special personality that is bold, sporting and friendly. It's built for the enthusiast who enjoys high performance and responsive handling, yet needs the room and comfort of a four-seater saloon.

The distinctive body is long, low and wide and there's independent suspension all round for enhanced riding comfort and road-hugging stability.

Performance more than matches the sporting styling with a rally proven twin-carburettor 1770 cc overhead camshaft engine and a smooth 5-speed gearbox to enable all the power to be used effectively.

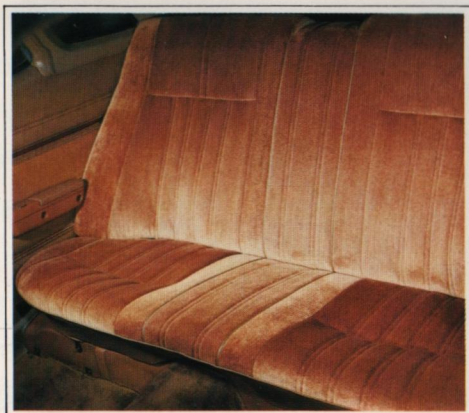
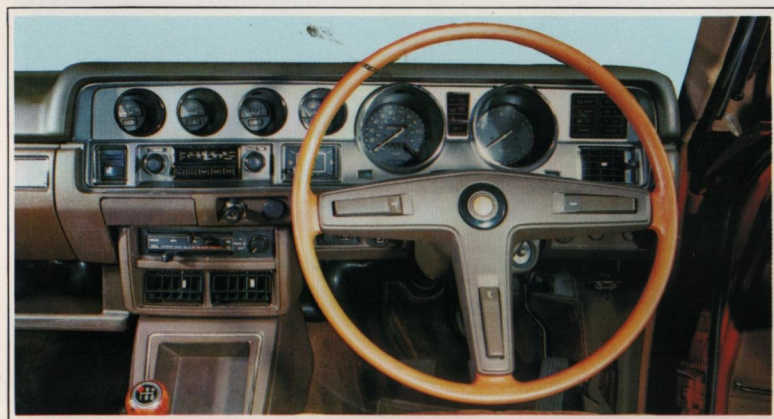
There are wide radial tyres on large sports wheels, and for stopping power there are servo-assisted, dual-circuit brakes with large discs at the front.

The interior features a sporting three-spoke steering wheel and an impressive dashboard with smart round instruments, including a large rev counter. The smaller dials are angled towards the driver and the safety padded dashboard also includes a clock with sweep second hand and push-button radio.

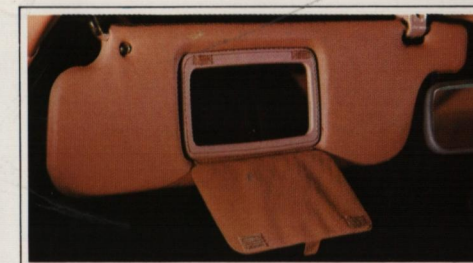
Fingertip control of the lights and the wiper/washer system is from stalks located on the steering column for maximum convenience. An impressive display of warning lights keeps the driver fully informed.

You'll also notice the luxurious cloth upholstered seats that are fully reclining at the front and have adjustable head rests. There's an illuminated front ashtray and cigar lighter, a lockable illuminated glovebox, and illuminated ignition and steering lock.

A special central "walk-in" control has been incorporated to enable the driver, or rear passenger to collapse the front passenger seat for easy entry and exit to the rear.



Tinted glass, reversing lights, hazard flashers, centre console — all the equipment is there. This is a special car, created for people who want something more than mere transport.



1.8 litre estate

The Bluebird Estate offers the motorist an elegant car with the adaptability to suit many moods.

The interior is refined and spacious. Corduroy-type cloth upholstered seats feel as comfortable as they look — even after a long journey! Both front seats recline fully and the driver's seat has a special tilt adjustment so you can find just the right position for YOU.

An impressive list of standard equipment includes tinted glass, MW/LW push button radio, heated rear window, head restraints, quartz clock, cigar lighter, lockable glove box, centre console, two-speed wipers plus intermittent wash/wipe, rear screen wiper with electric washer, reversing lights, hazard flashers and much more. There's a three-speed fan for the heater and powerful through-flow ventilation with central and face level outlets, and side window demisters.

The Bluebird Estate is well equipped for load carrying too! Open the high lift, counter balanced tailgate and you have a load area 52 inches wide and 65 inches long with the rear seat folded, to take masses of luggage or equipment. The floor is low and flat for easy loading and packing.

The Bluebird Estate is for the motorist who wants executive style motoring with the practical virtues of a spacious load carrier.





	1.6 LTR SALOON MANUAL	1.8 LTR SALOON MANUAL	1.8 LTR SALOON AUTOMATIC	1.8 LTR ESTATE	1.8 LTR SSS COUPE
Engine:	4 cylinder, in-line, OHC, water cooled				
Type					
Bore, mm	83.0	85.0			85.0
Stroke, mm	73.7	78.0			78.0
Capacity, cc	1595	1770			1770
Max. Power bhp/rpm (DIN)	81/5600	88/5600			90/5800
Max. Torque lb.ft./rpm (DIN)	88.9/3600	98.3/3600			100.5/3800
Compression ratio	8.5 to 1				
Fuel pump	Mechanical				
Carburettor	Dual Barrel, down draught				twin SU variable venturi side-draught
Transmission:	4 speed, all synchro				
Type	4 speed, all synchro		3 speed	4 speed all synchro	5 speed all synchro
Ratios 1st	3.382		2.458	3.382	3.382
2nd	2.013		1.458	2.013	2.013
3rd	1.312		1.000	1.312	1.312
4th	1.000		—	1.000	1.000
5th	—		—	—	0.854
Reverse	3.365		2.182	3.365	3.570
Final Drive Ratio	4.111		3.900	4.111	4.111
Clutch	Dry single plate, diaphragm spring				
Suspension:	Independent by coil springs and damper struts				
Front	Independent by semi-trailing arms with coil springs and damper struts				
Rear	Independent by semi-trailing arms with coil springs and damper struts		Rigid axle, semi elliptic springs		Independent by semi-trailing arms with coil springs & damper struts
Steering:	Recirculating ball, Ratio 15 to 1, turning circle (wall to wall) 36.1 ft.				
Type	5J 14 Styled Steel				
Wheels:	165SR 14 Radial				
Tyres	165SR 14 Radial				185/70HR 14 Radial
Brakes:	Disc front, drum rear, independent front and rear hydraulic circuits, vacuum servo, pressure regulating valve. Mechanical handbrake.				
Type					
Dimensions:	ins				
Overall Length	171.1		173.8		171.1
Overall Width	64.2				
Overall Height	54.7		56.3		54.3
Wheelbase	98.4				
Track Front	53.1				
Track Rear	53.0		53.1		53.0
Road Clearance	6.9				
Kerb Weight	2304		2348		2348
Fuel Tank Capacity	13.2		12.3		13.2
Galls					

1.8 LTR Estate Luggage Compartment
 a) Length (with seat up) 36.6 ins b) Length (with seat down) 64.8 ins
 c) Width (max.) 51.6 ins d) Height (max.) 31.7 ins

GOVERNMENT FUEL CONSUMPTION TESTS —		
M.P.G. (Litres per 100 Kilometres)		
Town Driving Cycle	Constant 56 m.p.h. (90 km/h)	Constant 75 m.p.h. (120 km/h)
1.6 Litre Sal. 28.2 (10.0)	39.8 (7.1)	29.1 (9.7)
1.8 Litre Sal. M 28.5 (9.9)	39.2 (7.2)	30.1 (9.4)
1.8 Litre Sal. A 28.5 (9.9)	35.8 (7.9)	27.2 (10.4)

GOVERNMENT FUEL CONSUMPTION TESTS —		
M.P.G. (Litres per 100 Kilometres)		
Town Driving Cycle	Constant 56 m.p.h. (90 km/h)	Constant 75 m.p.h. (120 km/h)
1.8 Litre Est. 28.5 (9.9)	37.2 (7.6)	27.2 (10.4)
1.8 Litre SSS (11.3)	41.5 (6.8)	31.0 (9.1)

Datsun policy is one of continuous improvement. The right is reserved to change specifications, colours and prices of the models and items illustrated and described in this publication at any time. Where possible, any such changes which may be introduced after publication of this booklet but before it is supplied will be incorporated herein or announced by means of a notice prominently displayed in Datsun Dealerships at the point of supply. For the latest details always consult your Datsun Dealer.

