

DATSUN



280C

Luxury driving with the Datsun 280C

Presenting the superb new Datsun 280C. A luxury saloon and estate car of exceptional quality and refinement – the latest in a line of prestige top-of-the-range Datsuns.

Elegant new styling creates an immediate air of distinction with long, low lines, slim roof and window pillars and large glass area.

Spacious new interiors offer sumptuous comfort with an extremely high level of luxury standard equipment.

Safety, soundproofing, ease of driving, convenience – in just about every area the new 280C reaches new heights of motoring sophistication.



The 280C Luxury Saloon

The new 280C saloon is a symbol of luxury motoring with Datsun at its finest. Styling is refined and elegant down to the last detail, from the clean cut rectangular headlamps, horizontal grille and large wrap-around indicators to the new 'opera' windows and stylish alloy wheels. Here is a car designed to create a lasting impression of quality.

The new 280C saloon is powered by a 2.8 litre six cylinder engine which gives extra power at lower revs for quiet, effortless performance. New ZF type variable ratio power steering gives you responsive control with the minimum of effort. The precision built 5-speed manual gearbox is light and easy to use, or if you prefer there is the

option of a three speed fully automatic transmission. A newly designed braking system uses discs on all four wheels and is, naturally, power assisted. Road noise has been reduced and riding comfort enhanced by a new suspension system using coil springs and double wishbones at the front and 4-link coil springs at the

rear. No less than eleven specific design features have been incorporated to ensure that all noise levels are kept to a minimum so that you travel in peace and quiet.



The Stylish and Spacious 280C Estate

The new 280C estate combines executive style and luxury with the practical advantages of a spacious load carrier.

A raised roof line gives the estate car a distinctive appearance and provides additional headroom for passengers or extra space for load carrying.

Large halogen headlamps are kept clean by power jet washers. A wide protective side moulding gives all round protection against car park damage.

There's a high lift, counter-balanced tailgate fitted with twin wipers and washer and a heated rear window to help maintain a clear rear view. An interior handle release allows easy exit from the rearward facing bench seat.

An unusual feature on the new 280C estate is a rear side window which can be electrically operated from outside the car and is ideal for loading small shopping items into the luggage area without opening the tailgate.

The new 280C estate is fitted with the same powerful 2.8 litre engine as the saloon so you can enjoy smooth six cylinder performance with unbeatable Datsun reliability. Like all Datsun engines the layout is neat and accessible, keeping your maintenance costs down to a minimum.

A slick five speed gearbox is a standard fitting - fifth gear giving the advantage of quiet economical cruising - at a steady 56mph the estate car gives over 32mpg. A 3-speed fully automatic transmission is available as an option. ZF type power assisted steering is a luxury standard feature giving effortless control and good response at high speeds.

Rear suspension on the 280C estate uses heavy duty leaf springs and double acting shock absorbers to cope with heavy loads.

Luxury and practicality - the new 280C estate.



Control At Your Finger-Tips

Sit at the wheel of the new 280C and look around you. There's an immediate impression of quality and refinement, with wood grain effect facia panelling and colour co-ordinated trim.

Now take a closer look at the controls and equipment.

A highly accurate digital quartz clock keeps you on time for business appointments. At the push of a button you get a day and date display followed by a minutes and seconds reading.

For your in-car entertainment there's a 3 wave-band push button radio with electric aerial and an auto-reverse stereo cassette player with programme change, separate tone control and counter.

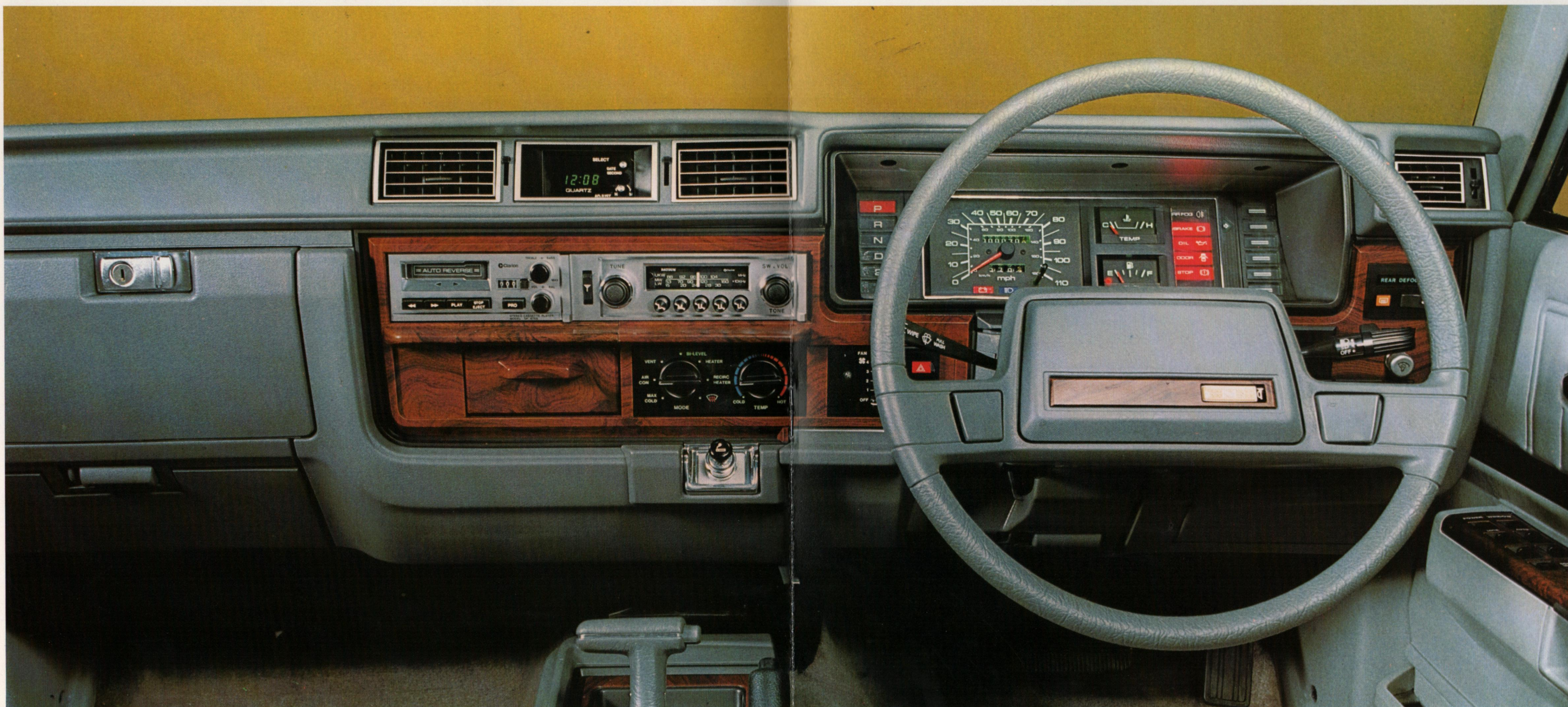
Modern circular controls operate

the highly advanced bi-level heating and ventilation system. Face level, side and central vents are fully adjustable. The powerful heater has a four-speed fan. Rear passengers have their own ducted heating and there are side window demisters to help maintain a clear all round view.

A sophisticated air conditioning system, a luxury standard feature in the new 280C saloon, keeps you cool when the going gets hot.

From a master panel on the driver's door arm rest you can operate all four electric door windows. A 'flick' switch lets you open and close the driver's window automatically and a push button lock overrides the individual window control on each of the passenger doors. Another control on the master panel instantly unlocks the three passenger doors. The fuel filler

lid can be opened electrically from inside the car and on the saloon the boot can also be opened by remote control from the driver's seat. There are power jet headlamp washers, three speed wipers with intermittent and wash-wipe, cigar lighters front and rear, individual reading lights for rear seat passengers on the saloon, a warning light display, vanity mirror with cover, hazard flashers, panel light rheostat, reversing lights – everything is there for your comfort and convenience.



Much More Room for Comfort



The new 280C interiors are spacious and superbly comfortable. Head and leg room have been increased to give you and your passengers more room to relax. Seats are thickly padded and upholstered in high grade tricote cloth. Front seats are fitted with adjustable head restraints.

The driver's seat on the new 280C is specially designed to give you lasting comfort no matter how long your journey. There's an adjustable lumbar control to vary the amount of support to the back - one of the principal areas of driver fatigue; a tilt adjustment allows you to vary the seat height and, of course, both front seats are fully reclining. The steering wheel position can also be varied so that you can obtain exactly the right driving position to suit YOU.

The wide rear bench seat comfortably accommodates three adults or, on the saloon, can be divided for two by a fold-down central arm rest.

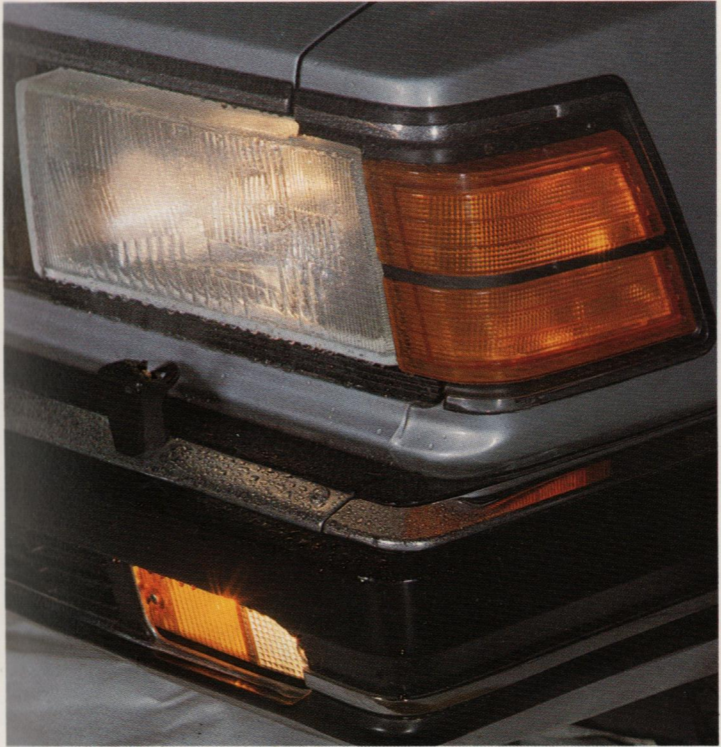
Deep pile fitted carpets add to the luxury feel of the interior and total colour harmony makes it equally pleasing to the eye.

The new 280C estate interior can be adapted to suit a variety of motoring needs. With the rear seat in position it's a comfortable five seater with a really useful luggage area 43 inches long and 54 inches wide. Alternatively you can fold out an additional rear seat in the luggage compartment to make the 280C estate a remarkable seven seater. Finally, with both rear seats folded down the 280C estate offers enough room for overnight accommodation with a fully carpeted area 79 inches long.

Like the new 280C saloon, the estate car interior is colour coordinated with upholstery, trim and carpets matching in an attractive blend of shade and colour.



The little extras make a big difference



Above Left: Impressive centre console has a compartment for your cassettes and a convenient drinks tray incorporated in the lid.

Above: Opera windows are an elegant new feature on the saloon. Also shown is the rear passenger reading light.

Left: Wide, high-lift tailgate on the estate is fitted with twin wipers, electric washers and heated rear window.

Above Right: Impressive saloon fascia houses push-button radio and stereo tape player. Also shown are controls for the advanced heating and ventilation system and the cigar lighter.

Above: Powerful halogen headlamps are kept clean by electric washers. Alongside are large wrap-around indicators.

Below Right: Facia panel on the saloon houses controls for the boot and fuel lid release, headlamp washers, heated rear window and panel lights.



specifications

280C Saloon

ENGINE: 6-cylinder, in-line water cooled. Overhead camshaft. 86.0mm bore x 79.0mm stroke. Capacity 2753cc. 125 bhp at 4800rpm (DIN). Torque 145ft.lbs. at 3200rpm (DIN). Compression ratio 8.6:1.

COOLING SYSTEM: Pressurised system with engine driven water pump and fan.

FUEL SYSTEM: 2 barrel down-draft carburettor. Mechanical fuel pump.

ELECTRICAL SYSTEM: 12v 60amp battery and alternator, magnetic shift starter motor.

GEARBOX: Manual – 5 forward speeds, all synchromesh and reverse, with floor gear change lever.

Automatic – 3 forward speeds, central floor shift lever.

CLUTCH: Single dry plate, diaphragm spring.

BRAKES: Hydraulic. Tandem master cylinder with power assistance. Discs front and rear. Handbrake: central pull-up lever operating on rear wheels.

SUSPENSION: Front: Independent, coil springs and double wishbones. Rear: 4-link coil springs.

WHEELS AND TYRES: 5½J alloy wheels with 195/70 HR 14 radial tyres.

STEERING: Recirculating ball gear with collapsible steering column shaft. Variable ratio power assisted.

BODY: Five seater, four door. All steel unitary construction with crush zones, front and rear. Spare tyre in boot beneath floor.

DIMENSIONS AND WEIGHTS:

Overall length (ins)	189.6
Overall width (ins)	67.5
Overall height (ins)	56.3
Wheelbase (ins)	105.9
Track (ins) Front	56.1
Rear	54.7
Ground clearance (ins)	6.9
Curb Weight (lbs) Manual	3031
Automatic	3042

CAPACITIES:

Fuel tank (imp.gall)	15.8
Engine oil (imp.quart)	4.0

280C Estate

ENGINE: 6-cylinder, in-line water cooled. Overhead camshaft. 86.0mm bore x 79.0mm stroke. Capacity 2753cc. 125 bhp at 4800rpm (DIN). Torque 145ft.lbs. at 3200rpm (DIN). Compression ratio 8.6:1.

COOLING SYSTEM: Pressurised system with engine driven water pump and fan.

FUEL SYSTEM: 2 barrel down-draft carburettor. Mechanical fuel pump.

ELECTRICAL SYSTEM: 12v 60amp battery and alternator, magnetic shift starter motor.

GEARBOX: Manual – 5 forward speeds, all synchromesh and reverse, with floor gear change lever.

Automatic – 3 forward speeds, central floor shift lever.

CLUTCH: Single dry plate, diaphragm spring.

BRAKES: Hydraulic. Tandem master cylinder with power assistance. Front discs. Rear drums with leading and trailing shoes. Handbrake: central pull-up lever operating on rear wheels.

SUSPENSION: Front: Independent, coil springs and double wishbones. Rear: semi-elliptic leaf springs.

WHEELS AND TYRES: Pressed steel disc 5J wheels with 195/70 HR 14 radial tyres.

STEERING: Recirculating ball gear with collapsible steering column shaft. Variable ratio power assisted.

BODY: Five door with hydraulic balanced tailgate. All steel unitary construction with crush zones, front and rear. Spare tyre at rear beneath floor.

DIMENSIONS AND WEIGHTS:

Overall length (ins)	187.0
Overall width (ins)	67.5
Overall height (ins)	58.9
Wheelbase (ins)	105.9
Track (ins) Front	55.7
Rear	54.3
Ground clearance (ins)	7.1
Curb Weight (lbs) Manual	3153
Automatic	3164

CAPACITIES:

Fuel tank (imp.gall)	13.2
Engine oil (imp.quart)	4.0

GOVERNMENT FUEL CONSUMPTION TESTS M.P.G. (Litres per 100 kilometres)

	Constant 56mph (90 km/h)	Town Driving Cycle	Constant 75mph (120 km/h)
Saloon (Man)	31.0 (9.1)	18.5 (15.3)	24.8 (11.4)
Saloon (Auto)	27.2 (10.4)	19.2 (14.7)	21.4 (13.2)
Estate (Man)	32.1 (8.8)	18.5 (15.3)	24.1 (11.7)
Estate (Auto)	26.2 (10.8)	19.2 (14.7)	19.9 (14.2)

Datsun policy is one of continuous improvement. The right is reserved to change specifications, colours and prices of the models and items illustrated and described in this publication at any time. Where possible, any such changes which may be introduced after publication of this booklet but before it is supplied will be incorporated herein or announced by means of a notice prominently displayed in Datsun Dealerships at the point of supply. For the latest details always consult your Datsun Dealer.

DATSUN UK LIMITED

Datsun House New Road Worthing West Sussex

