



mazda

ZOOM-ZOOM

Mazda6



The newly developed MZR aluminium four cylinder petrol engines:

- 1.8 litre developing 88 kw (120 ps)
- 2.0 litre developing 104 kw (141 ps)
- 2.3 litre with S-VT (sequential valve timing control) developing 122 kw (166 P.S.)

The newly developed, second generation MZR-CD common-rail diesel engines:

- 2.0 litre developing 88 kw (120 P.S.)
- 2.0 litre developing 100 kw (136 P.S.)

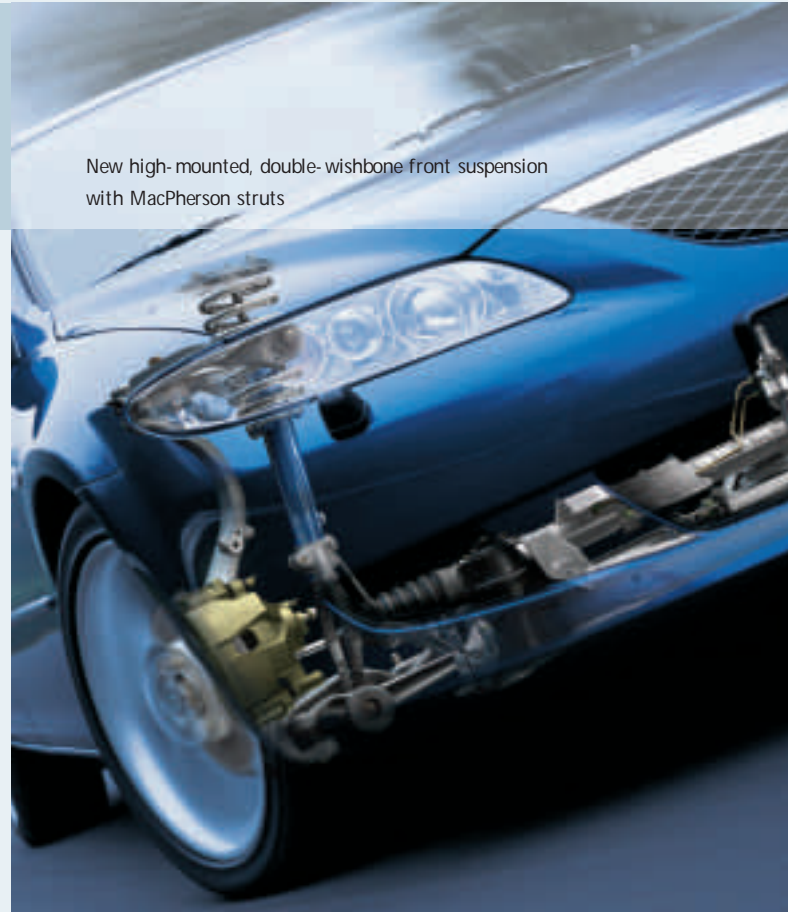
Both diesel powerplants utilize Mazda's new EVVC system (Expansive Vertical Vortex Combustion) to achieve optimal performance, engine speed, consumption and emission levels.

4-speed automatic transmission for the 2.0 litre petrol engine – optional

5-speed automatic transmission and 4WD system for the 2.3 litre petrol engine Estate. The 4WD system has sensors on all four wheels which provide feedback on speed and slippage to a central control unit which distributes power and torque to the wheels faster and more precisely than is possible with a conventional mechanical system

Technical data

- Reduced engine, tyre and wind noise make for a very comfortable ride and smooth operation
- New platform with the widest track in its class and a low centre of gravity
- New sophisticated multi-link rear suspension
- Environmentally conscious vehicle with lower emissions and increased use of recycled and recyclable materials



New high-mounted, double-wishbone front suspension with MacPherson struts

Performance and Economy	MZR					MZR - CD		
Engine	1.8i / 5MT	2.0i / 5MT	2.0i / 4AT	2.3i / 5MT	2.3i / 5AT	2.0i / 5MT	2.0i / 5MT	
Fuel	Unleaded Petrol					Diesel		
Displacement (cc)	1,798	1,999	1,999	2,261	2,261	1,998	1,998	
Maximum Output (kW (ps)/rpm)	88 (120)/5,500	104 (141)/6,000	104 (141)/6,000	122 (166)/6,500	122 (166)/6,500	88 (120)/3500	100 (136)/3500	
Maximum Torque (Nm/rpm)	165/4,300	181/4,100–5,000	181/4,100–5,000	207/4,000	207/4,000	310/2,000	310/2,000	
Acceleration (0-62 mph in secs)	11.0	9.9	11.8	9.0	tbc	11.0	10.6	
Maximum speed (mph)	121	128	121	131	tbc	122	123	
Fuel economy (mpg) ¹⁾	Urban	24.1	24.0	23.7	22.8	tbc	34.0	34.0
	Extra-Urban	44.8	42.8	40.9	39.2	tbc	51.4	51.4
	Combined	34.0	33.3	32.1	31.0	tbc	43.5	43.5
CO ² -Emission ¹⁾ (g/km)	198	203	209	218	tbc	179	179	

All performance figures based on 5dr models where applicable, and may differ between body styles.

Dimensions and Capacities	MZR					MZR - CD		
Engine	1.8i / 5MT	2.0i / 5MT	2.0i / 4AT	2.3i / 5MT	2.3i / 5AT	2.0i / 5MT	2.0i / 5MT	
Fuel	Unleaded Petrol					Diesel		
Fuel tank capacity (L)	64	64	64	64	62	64	64	
Tyres and Wheel	205/55 R16 Alloy Wheels	205/55 R16	205/55 R16	205/55 R16	-	tbc	205/55 R16	205/55 R16
	215/45 R17 Alloy Wheels	-	-	-	215/45 R17	tbc	-	-
Overall length/width/height (mm)	- 4 dr / 5dr	4,680/1,780/1,435	4,680/1,780/1,435	4,680/1,780/1,435	4,680/1,780/1,435	-	4,680/1,780/1,435	4,680/1,780/1,435
	- Estate	-	4,690/1,780/1,480	4,690/1,780/1,480	-	4,690/1,780/1,480	4,690/1,780/1,480	4,690/1,780/1,480
Wheelbase (mm)	2675	2675	2675	2675	2675	2675	2675	
Luggage Volume 4dr/5dr/Estate (L)	500/492/505	500/492/505	500/492/505	500/492/505	500/492/505	500/492/505	500/492/505	

¹⁾ Fuel consumption value according to 1999/EC

Interior (standard features)

External temperature meter, remote central door locking, Modular Mazda audio system, steering column with tilt and telescopic adjustment and a unique 'Karakuri' seat function on the Mazda6 5dr and Estate versions.

Safety (standard features)

Smart front airbags, side airbags in the front, curtain airbags in the front and back, airbag cancel system on the passenger side, ISOFIX child's seat anchorages in the back, ABS with electronic brake force distribution (EBD).

Estimated 'on the road' price		1.8S	1.8TS	2.0 TS	2.0TS ²	2.3 SPORT
	4dr Petrol	-	£14,495	£14,995	£16,495	tbc
	5dr Petrol	£13,495	£14,495	£14,995	£16,495	£17,995

Options - Mazda6 Diesel and Estate models; Price and specification to be announced mid June. Specification may vary from specification shown.

Metallic paint	£295	£295	£295	£295	£0
4-speed automatic transmission			£1000	£1000	-
DVD Satalite navigation system				£1500	£1500
Power black leather seats				£1000	£1000

Key Specification

ABS with EBD	●	●	●	●	●
Traction control system (TCS)/Emergency Brake Assist (EBA) /Dynamic Stability Control (DSC)				●	●
Driver / Passenger / Side / Roof airbags	●	●	●	●	●
Electric tilt & slide sunroof				●	●
Electric front and rear windows & electric heated mirrors	●	●	●	●	●
Air-conditioning	●				
Climate control air-conditioning		●	●	●	●
Cruise Control		●	●	●	●
Rear Spoiler	○	○	○	○	●
16" Alloy wheels with 205/55 tyres	●	●	●	●	
17" Alloy wheels with 215/45 tyres	○	○	○	○	●
Metallic paint standard					●
Thatcham Cat.1 Alarm & Immobiliser	●	●	●	●	●
Xenon headlamps					●
Bose Premium audio system with seven speakers				●	●
Modular audio system with stereo radio	●	●	●	○	○
:Cassette	●				
:Single CD		●	●		
:6-disc autochanger				●	●

● = Standard ○ = Optional

Mazda Motors UK Limited reserve the right to alter specification and price without prior notice. Prices shown are estimated 'on the road' prices and are inclusive of number plates, 12 months road fund licence and first registration tax.



Black MC (16W)



Eternal Red (A3E)



Silver Contrail M (25H)



Titanium Grey M (25G)



Brilliant Yellow MC (25C)
(5dr Sport only)



Garnet Red MC (25F)
(not available in sport)



Blue Pacific MC (25B)



Racing Green MC (18J)

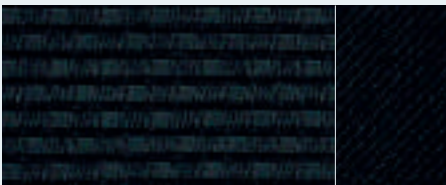
Colours and seat trims



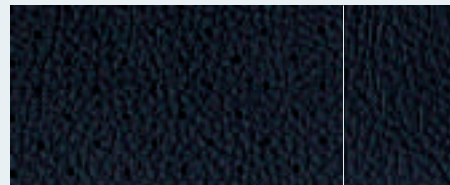
S: black cloth



TS, TS²: grey velour



Sport: black sports cloth



TS², Sport: Black Leather
– optional

The Mazda Warranties

Warranty Plus – 3 Year Cover

Every Mazda is designed and built to the highest standards of performance, comfort and reliability. For your further reassurance Mazda also provides a full three year/60,000 mile¹ warranty cover including Mazda European Assistance² and twelve years anti-perforation warranty.

- 1 There is no mileage limit during the first year of the warranty
- 2 Mazda Assistance for commercial vehicles covering the whole of the UK.

Your Mazda Dealer:



Mazda Motors UK Limited reserves the right to introduce at any time alterations in specification and equipment. It is recommended that you consult your Mazda dealer when referring to exterior body colours or interior.

Status: 15. May2002

Internet: www.mazda.co.uk
Mazda Hotline: 08457 484848