

The Honda S2000



These specification details do not apply to any particular product which is supplied or offered for sale. The manufacturers reserve the right to vary their specifications, including colours, with or without notice and at such times in such manner as they think fit. Major as well as minor changes may be involved. Every effort, however, is made to ensure the accuracy of the particulars contained in this brochure. This publication shall not constitute in any circumstances whatsoever an offer by the Company to any person. All sales are made by the Distributor or Dealer concerned subject to and with the benefit of the standard Conditions of Sale and Warranty given by the Distributor or Dealer, copies of which may be obtained from him on request. This publicity material applies to the UK only Trade Descriptions Act (1968). Whilst efforts are made to ensure specification accuracy, brochures are prepared and printed several months in advance of distribution and consequently cannot always immediately reflect either changes in specification or in some isolated cases the provision of a particular feature. Customers are always advised to discuss specification details with the supplying Dealer especially if your model selection is dependent upon one of the features advertised.

Honda (UK) - Cars

470 London Road, Slough, Berkshire, SL3 8QY
Honda Contact Centre - Telephone: 0845 200 8000
www.honda.co.uk



Printed on Recycled Paper

A division of Honda Motor Europe Ltd. No. 857969 Registered in England and Wales

Part No: CARM 0978
Issue Date: 12/03





At Honda, belief is everything.

It's the belief that we have the power to change things.

To make the ordinary, extraordinary.

To question the status quo.

To take a boundary and extend it.

We've spent 50 years at the top of international motorsport.

We wanted to celebrate. And decided to create our ultimate roadster.

We handed some of the world's finest engineering minds a
blank sheet of paper.

They applied all their experience, passion - and the power of dreams.

And created a sports car worthy of its pedigree.



Exterior Design	5
Interior Design	11
Driving Dynamics	19
Safety	27
Details	33
Exterior Details	35
Interior Details	37
Model Grades	39
Options	41
Environment	45
Innovation	47
Finance/Aftercare	49
Specification	51
Model Colours	53



?Do you look at the surface or what lies beneath

We look at both. It is a desire to take our passion for racing and create the ultimate in performance engineering. It's our history that's led us to look at things this way. From the Honda Sports 360 and 500, first built by our founder, Soichiro Honda. To the first ever all-aluminium sports car, the Honda NSX. The Honda S2000 has been a natural evolution. It isn't a car built from the inside out or indeed the outside in. This is a car designed as a whole. Every component coming together as one. We don't believe in limitations. Here's the evidence. The Honda S2000. Look deeply.



?Ever noticed how a second look tends to be more revealing

It's easy to overlook the finer details. But take a closer look at the Honda S2000. Let your eyes absorb every inch of the car from front to back. Start with the triple beam headlights. A first glance shows a sporty, fluid design. But look harder and see in-built indicator reflectors, intelligently designed to improve aerodynamics. Then notice the sleek door mirrors. With their heated glass they provide constant, clear visibility. And take a glance at the 17 inch wheels. Their stylish new design doesn't just look good, but offers improved grip and stability. Yet for all this detailed thought and relentless logic, the Honda S2000 still has the soul, the sheer magic, that is the essence of a true sports car. You'll just want to keep looking.



?When did you last enjoy making a decision

Hardtop or soft-top? Picture a summer's day, a warm breeze, a coastal road. One efficient flick of a switch, and the soft-top is down, giving you an exhilarating drive. Or what about the practicality of a Honda S2000 GT hardtop? Ideal for smooth city driving in all conditions. It's a different style of motoring that offers even greater security, reduced wind noise and it looks effortlessly sleek. The hardtop can be removed when not required to reveal the soft-top underneath.





?Ever noticed how a little extra thought makes all the difference

The Honda S2000's interior is rich in thoughtful design. A layout created to optimise your comfort and ease of drive. Take the centre console, built with a convenient sliding lid which opens with one, swift touch. Plus there's space for two cups. Simple design, yet so effective. What about the wind deflector? A glass plate positioned between the headrests means that, even with the roof down, you remain comfortable. Not essential, but what a difference.

The tweeters have been reshaped, and the stereo is now concealed discreetly behind a sleek metallic panel. You have the option of having speakers fitted to the rear of the headrests to maximise sound quality with the roof down. We don't have to think about these things, but we do. And you'll be glad we did.



?Want to know what empowerment feels like

The Honda S2000 is styled inside to maximise your control. And at the same time to relax you. You feel it the moment you first sit in the body hugging leather seats. Placed deliberately low, they draw you deep inside, connecting you closely to the lightweight chassis. You become sensitive to the alloy engine and experience new levels of performance. This is a serious union of driver and sports car.



?Wouldn't life be simpler if everything fell easily to hand

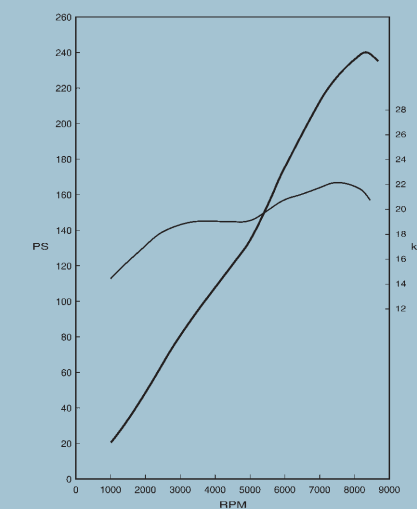
Imagine. No searching, no scrabbling around trying to find things. We think this is how it should be. All you want is to focus on the road, the car, the drive. Each control sits snugly within fingertip distance. The hazard lights and heated window switches are directly next to the gear lever, as is the button that operates the electric hood with its glass rear screen. And the dashboard? A single meticulous display of digital figures.

Even the clock is easy-to-glimpse. The steering wheel wrapped in luxurious, seamless leather. And the brakes are powerful, progressive and fade resistant. Even the pedals are drilled aluminium alloy making them light and sensitive for instant, precise responses. Every detail is designed with you in mind. Designed for you to focus on the drive.



**?What happens when you look at things differently**

You gain a whole new outlook. That's what our engineers did. To the Honda S2000 they brought all their race experience and not one pre-conception. They questioned how the chassis and suspension could impact performance. Desiring a race car feel in a two-seater roadster meant a move away from the conventional design route. They created a unique suspension system, maximising tyre tread on the road. The result? A convertible that handles with an assuredness you'd usually only expect from a coupé. And all it took was a different perspective.



The Honda DOHC VTEC engine combines low rev torque with high end power

?What does it take to make the ordinary, extraordinary

More than you'd expect. Inspired thinking. Radical new design. Superior technology. Which explains why the Honda S2000 has won International Engine of the Year*, every year since its launch. Underneath the bonnet is a 2.0 litre VTEC racebred engine. This sophisticated VTEC system changes the timing and lift of the valves, to combine good torque characteristics at low revs, with high power at high revs. More intelligent design includes lightweight valve springs and low friction plating.

8,300 rpm. 120PS per naturally aspirated litre. Power unheard of outside the racetrack. But then that's what you'd expect from Tochigi, our research and development centre. And the home of six F1 World Constructors Championships. We never settle for ordinary, and neither should you.

*Within the 2.0 litre category



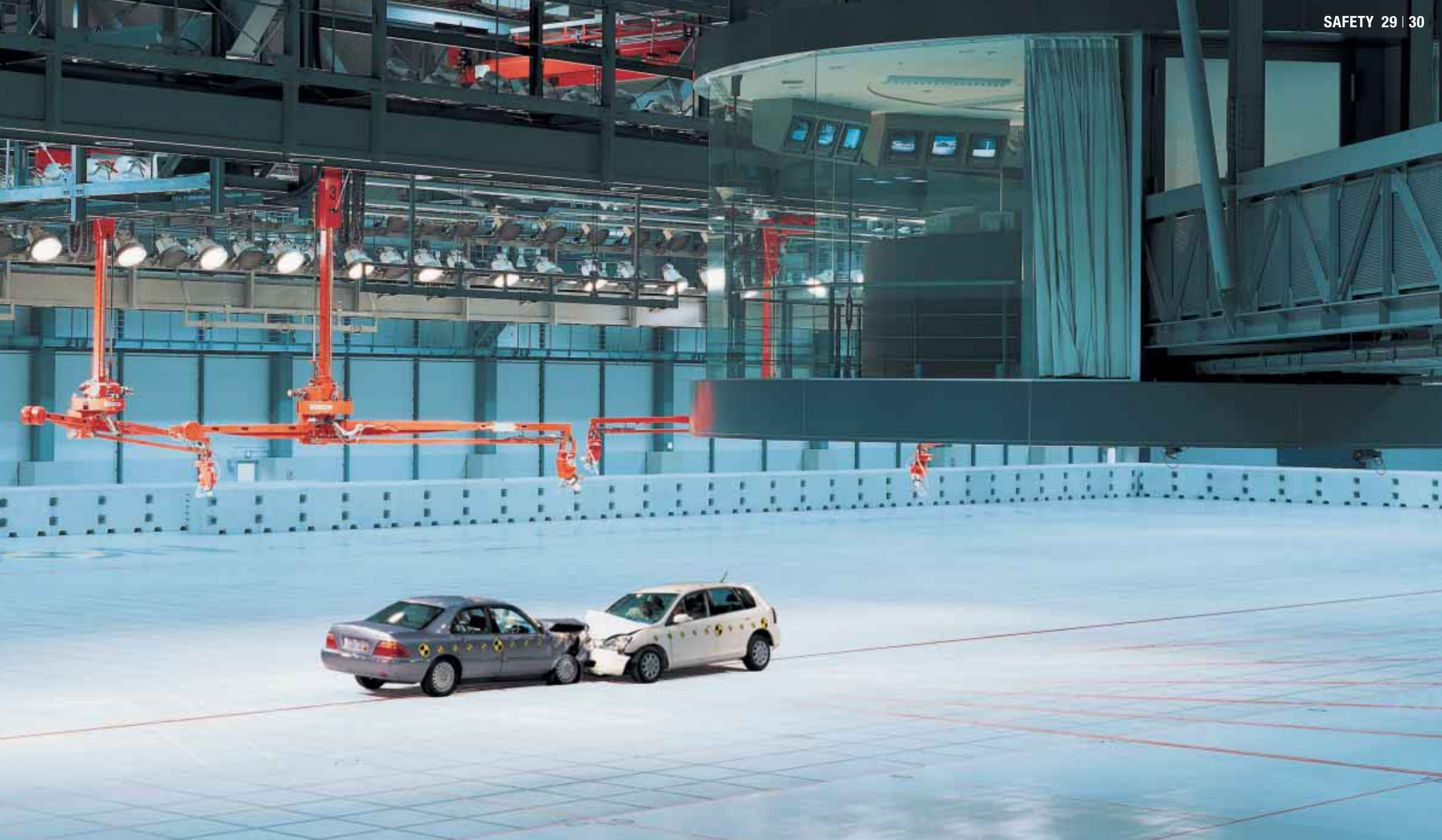
Race inspired engine start button

?Are you prepared for the best experiences in life

True driving pleasure lies in precise control. And that's what every element of the Honda S2000 is designed to give you. Grip the lightweight aluminium gearshift. It's wrapped in the same tactile leather as the steering wheel. Start the engine using the race inspired dash mounted start button. It doesn't merely turn over, it comes to life.

The new carbon synchroniser connects with each one of the six gears smoothly and effortlessly. The chassis and steering are engineered for maximum stability at high speeds. This is race inspired technology at its finest. Which explains why no other roadster delivers a driving experience to match the Honda S2000.





?When do you know you've created perfection

When it can't be bettered. Like our safety measures. We couldn't find a crash test centre that met our standard, so we built one. Tochigi is the largest indoor test-facility in the world. And because we designed it, we know just how vigorous the safety tests are. It's not just passenger safety we test, it's pedestrian safety too. We test impact resilience from every direction and consider every possibility. Because that's how it happens in real life. And that's how we maximise your safety.

The Honda S2000 has crumple zones built into its chassis. If an accident happens, sections deform effectively and the crash force distributes into the chassis' centre tunnel. This means increased protection and minimal shock absorption for the occupants. We've included heavy-duty roll bars behind each seat. These reinforced steel loops are fixed directly to the chassis. There's a safety consideration in everything we build. This is safety from inception.



?These days, how easy is it to find peace of mind

With our passion for racing, safety has always been a priority. We take it very seriously. Driver and passenger airbags are always fitted as standard. As are seatbelt pre-tensioners, which tighten more firmly around you in the event of an impact. A seatbelt reminder alerts you to put it on in the first place. There is a lighter, improved Anti-lock Braking System (ABS). Even the tail-lights are a unique LED design for enhanced brightness.

The Honda S2000's innovative ignition system sets a new code each time you put the key in. An intrusion is detected, even with the soft-top down, using a sophisticated microwave sensor. With an immobiliser fitted as standard, you can rest assured, your sports car has maximum theft protection. Peace of mind at last.





Triple beam projector headlamps providing powerful HID illumination in low light conditions, sit behind impact resistant, aerodynamic covers.



Impressive 17 inch alloy wheels don't just look good but provide optimum grip.



The flexible radio aerial provides exceptional reception for the Honda S2000's integral radio.



High intensity LED rear brake lights sit with the reversing and driving lights behind impact resistant aerodynamic covers.



The indicator repeaters are located high on the side of the Honda S2000 for maximum visibility and are neutral in colour, to blend with the car's smooth lines.



This chrome badge completes the car's high quality exterior look.



The high level, high intensity rear brake light provides additional safety whilst blending seamlessly with the lines of the Honda S2000's boot lid.



An eye-catching chrome finish gives the rear exhaust pipes a striking, sporty look.



You'll love to drive the Honda S2000 even when the sun's not shining, so the mirrors have heated elements behind the glass to improve rear visibility.



Body coloured door handles sit flush within the door, enhancing the car's fluid shape.



Turbulence in the cabin is reduced, thanks to the folding wind deflector, located between the rear headrests.



To ensure that the HID headlamps maintain their efficiency, powerful headlight washers are fitted as standard.



As you climb into the car, you are greeted by a high quality embossed kickplate.



The foot pedals are drilled aluminium alloy making them light and sensitive for instant, precise responses.



The Honda S2000's instrument panel is an easy to read digital display.



For occasions when it's impractical to drive with the roof down, you have the option of air conditioning for interior temperature control and optimal visibility.



Race inspired engine start button.



To conceal the radio from prying eyes, it can be hidden behind the smart brushed aluminium panel.



Electric window and remote mirror controls are all clustered together within the driver's door panel for ease of operation.



A unique wave key gives you extra security via its innovative ignition system which sets a new code each time you use the key.



The Honda S2000's integrated in-car entertainment system, not only features a state of the art radio system, but also comes with a CD player.



For extra convenience, the centre console provides two cup holders plus a storage tray, accessed instantly with a one-touch-open sliding lid.



Although a compact roadster, you'll find generous boot space offering greater luggage capacity than you'd imagine.



The key to the Honda S2000's superior performance lies in its sophisticated VTEC engine.



The Honda S2000 is available in two models, the soft-top convertible 2.0 VTEC roadster or with a removable hardtop as the 2.0 VTEC GT roadster.



2.0 VTEC roadster



2.0 VTEC GT manual





To further improve sound quality with the roof down, additional speakers can be compactly fitted into the rear of the headrests.



To give the car's exterior a more purposeful stance, there's an option of a deep front spoiler.



To provide the finishing touch to the Honda S2000's smooth lines, aerodynamic panels are available. These further smooth the airflow past the car's impressive rear tyres.



Subtle or sporty. Choose from either the new high wing spoiler (pictured) for a more sporty look or a smaller, understated version.

The above are a selection of popular accessories. For a full listing please refer to the price list or your local dealer.

Is this what it means to be a world leader



We're a global corporation that builds cars. Why does that make us the bad guys? We might be dreamers, but we're also realists: we can't un-invent the internal combustion engine. So instead of trying to turn back the clock, since the 70s we've been working on winding it forward.

At Honda of the UK Manufacturing in Swindon, we build cars with the future in mind. By 2010, we aim to send no waste to landfill. We're already well on the way. Cutting waste by 50% in just three years helped. It also made it easier for us to achieve the tough ISO14001 and EMAS 2 environmental management standards.

But what about the cars themselves? What good are policies to reduce energy consumption, waste and emissions if you're still churning out gas-guzzlers?

As well as all our engines, we even make small parts like con-rod bolts and brackets from aluminium.

Why? Because it's one-third the weight of steel.

A lighter car needs less energy to get moving than a heavy one, so fuel economy's improved.

We've also made our cars virtually PVC and lead-free, and upped our use of recycled and recyclable materials in areas like dashboards and bumpers.

But we're engine people at heart, so we've been busy here, too.

The Insight is the most fuel-efficient production sports coupé in existence. Big claim. But backed up twice over, initially in 2002 with first place in the Sports/Coupé category of the Environmental Transport Association's

Car Buyer's Guide, then in 2003 winning the International Engine of the Year Award for Best Sub 1 litre engine. Love the idea but need more space? Good news: the same Integrated Motor Assist (IMA) technology is now available in a 4 door Civic Executive. This again is an award winner with Best Fuel Economy and Best 1-1.4 litre Engine at the 2003 International Engine of the Year Awards. Additionally, it's won the BP Green Fleet Award for Vehicle Innovation.

And while others wonder whether they shouldn't be researching a zero-emission alternative, we've got on with actually building it. Our FCX fuel-cell vehicles are already on the streets of Tokyo and LA. And heading this way.

Which just leaves our bikes and boats. We are reducing our motorcycles' emissions and fuel consumption by 30%, and have now stopped building any road-going two-strokes at all. If you're looking for an outboard, it's already four-stroke only. And when new emissions regulations come into force in 2006, you can relax knowing your engine already exceeds them.

Leadership is knowing where you're going and persuading others to come with you. Do you follow?

**?Impossible.
We don't know the meaning of the word.**



Formula One - the most demanding track of all. We've passed that test many times with six consecutive constructors championship victories



Revolutionary Supersport machines with race-winning technology



We'll pursue our passion for innovation anywhere, even on water

What if we'd just called ourselves a car manufacturer? Think of all the amazing things we - and you - might have missed out on: our award-winning scooters, superlative motorcycles. Not forgetting our world-renowned powerboat engines. And all those race triumphs including 557 Motorcycle Grand Prix titles and 118 TT wins, to name just a couple.

It's this desire to explore different branches of engineering, to make things happen through innovation and imagination, that makes us who we are. It can be a question of finding a new take on existing technology – like the Civic's dash-mounted gearshift, or redesigning the suspension to open up extra cabin space. Then again, we might choose simply to refine something to make it more environmentally friendly. Like our 4-stroke outboards, which already exceed the world's toughest emissions standards. They're clean, fuel efficient and 95% recyclable.

And sometimes, we come up with something completely new. When 500cc 2-stroke engines were replaced by 990cc 4-strokes in motorcycle Grand Prix racing, the easy option would have been to modify an engine we were already making. But we saw a chance for some truly radical thinking - and developed a totally unique 5-cylinder engine. A bold move that paid off when our RC211V bike won 15 out of 16 GP races in 2003, earning us yet another World title. We also innovated with our all-terrain vehicles (ATV), creating a whole new market in 1970. Thirty years later, we're still the world leader and in fact, half the ATV's on the planet have Honda on the tank.

But sometimes, we have to learn an entirely new science, and when we do, we often end up as world leaders. Take our revolutionary robot, ASIMO, which stands for Advanced Step in Innovative Mobility. Its remarkable walking technology allows it to negotiate stairs, rough surfaces and corners, while avoiding any obstacles in its path, making it ideal for work in hazardous environments. ASIMO can interpret the postures and gestures of humans, and can even recognise their faces and address them by name. We're in the business of keeping the world moving. Our work with ASIMO has given us unique insights into how human limbs, joints and senses operate. Which takes us beyond transport into personal mobility for everyone.

Remember, you saw it here first.



You'll find Honda technology in places that you never expected. But think about it, is it really a surprise?



The most elegant ideas have to perform in the toughest environments

?Why do we find it hard to talk about money

You've studied it. Talked about it. Dreamed about it. Now you have to pay for it. Just doesn't feel like part of the fun, somehow. So we thought, there should be a better way to do this. Not a quick-fix, easy-terms, one-size-fits-all deal, either. Finance that sounds too good to be true usually is. We were thinking 'honest', 'straightforward' and 'flexible'. And that's what you get, right from making the deposit.

?So where do we start

With the deposit. Your current car or cash are both fine. You don't have either? No problem: we can work out a zero-deposit package, too.

?Done your sums

The most important part of any finance is the monthly payments. Only you know how much you can really afford. So tell us. That way, we can work out monthly payments to fit in with your budget. Our finance packages are flexible enough to work round just about anything.

After that, it's up to you.

We give you choices right through the process. Including at the end of the agreement. You want to keep the car? Simple: make the final payment and it's all yours. Or, you can give it back. As long as it's in good condition and within the agreed mileage, you can walk away with nothing more to pay*.

And if you're ready for a new Honda, we'll arrange a part-exchange and a new finance package.

Easy, really.

Making our finance more straightforward meant leaving out a few things. The long, complex forms. The dense technical jargon. The wait to see if you've got the go-ahead. We didn't think you'd miss them. We don't. All of which means you get your new Honda quicker. Of course, none of this is any substitute for talking it over with your local Honda dealer. So now you know what to expect from a visit to us. When can we expect a visit from you?

Honda S2000 Roadster	
OTR Price	£26,513.00
Deposit	£5,228.25
Advance	£21,284.75
36 x	£430.00
1x (GMFV)	£11,068.00
Total Amount Payable	£31,821.25
APR	10.9%
Annual Mileage	10,000
Excess Mileage	9p per mile

Total cash price includes £475 delivery & number plates, £38 first registration fee and VED in line with Government Legislation. The Guaranteed Minimum Future Value (*Honda Aspirations only) will be used to pay the Final Payment if the car is returned after the last monthly payment provided the car has been serviced in accordance with the Honda service book, is in good condition and the maximum permitted mileage has not been exceeded. A £95 Credit Acceptance Fee is included in the monthly payments and a £45 Option to Purchase Fee is payable with the final payment. Offer not available to limited companies. Finance is only available to persons aged 18 or over subject to status. Indemnities may be required in certain circumstances. Full written quotations available on request. All figures are correct at time of publication but may be subject to change. Models subject to availability.

?Want to predict the future

The Honda S2000, like all Hondas, is made to our exacting standards. But we take nothing for granted. So the Honda S2000 is covered by a 3 year manufacturer's warranty*. You can extend this period of cover with a Hondacare Guarantee and give yourself peace of mind for up to a further 4 years. Hondacare Guarantee is unique and only available from authorised Honda Dealerships.

Just choose the period of cover you want - from 4 months to 4 years. Then sit back and relax, knowing that help is only a telephone call away. Unexpected repair bills will be settled immediately.

Further benefits include:

- Repairs carried out by Honda trained technicians
- Guarantees the use of only Genuine Honda parts
- Fully comprehensive AA cover

Just ask your authorised Honda Dealership for more details.

*Subject to the Warranty terms and conditions listed on pages 15 and 16 of your service book.

?Like beneficial insurance rates

The Hondacare insurance scheme has been specially designed so that Honda owners receive beneficial insurance cover at competitive rates. To obtain details of all the benefits included and to receive a quotation, please contact your authorised Honda Dealer or call the Honda Contact Centre on 0845 200 8000.

?Is help at hand when it really matters

With Honda it is. Because if you're unlucky enough to have an accident, we have a free Hondacare Accident Helpline that will sort all the details for you and make it a priority to get your car back on the road. In the event of an accident please telephone 0800 521 728.

SPECIFICATION

	2.0 VTEC Roadster	2.0 VTEC GT Roadster
Engine		
Engine displacement (cc)	1997	1997
Maximum power (PS @ rpm)	240@8300	240@8300
Maximum torque (Nm @ rpm)	208@7500	208@7500
Fuel type	Petrol	Petrol
Recommended fuel rating (RON)	98 recommended	98 recommended
Transmission		
6-speed manual	●	●
Driven wheels	Rear	Rear
Performance		
Maximum speed (mph)	150	150
Acceleration 0-62 mph (secs)	6.2	6.2
Fuel consumption†		
Urban	20.6 mpg	20.6 mpg
	L/100km	L/100km
Extra urban	35.3 mpg	35.3 mpg
	L/100km	L/100km
Combined	28.5 mpg	28.5 mpg
	L/100km	L/100km
CO ₂ emission (g/km)	237	237
Weights and towing (kg)*		
Kerb weight	1271	1271
Turning circle - kerb to kerb (m)	5.4	5.4
Wheels and tyres		
Wheels	17" alloy	17" alloy
Tyres (front)	215/45	215/45
Tyres (rear)	245/40	245/40
Instruments and controls		
Start button	●	●
Digital odometer (trip)	●	●
Automatic headlight height	●	●
Safety		
Dual front Supplemental Restraint System (SRS) airbags	●	●
High level rear brake light	●	●
Anti-lock Braking System (ABS)	●	●
Headlight washers	●	●
Front ventilated disc brakes	●	●
Rear disc brakes	●	●
Roll over protection	●	●
Anti roll bars	Front/Rear	Front/Rear

	2.0 VTEC Roadster	2.0 VTEC GT Roadster
Security		
Rolling code ECU engine immobiliser	●	●
Boot release in locking centre console	●	●
Tracker system	○	○
Central locking	●	●
Remote keyless entry	●	●
Thatcham category 1 alarm system	●	●
Exterior		
Electric/heated door mirrors	●	●
Body coloured bumpers	●	●
Body coloured door mirrors	●	●
Body coloured hard top	○	●
Body coloured door handles	●	●
HID headlights	●	●
Bee sting aerial	●	●
Comfort and convenience		
Electric power assisted steering	●	●
Manual air conditioning with pollen filter	●	●
Front cupholders	●	●
Leather and alloy gear knob	●	●
Leather wrapped steering wheel	●	●
Drilled aluminium pedals	●	●
Embossed kick plates	●	●
Soft-top with glass heated rear screen	●	●
Electric roof	●	●
Front electric windows	●	●
Seating		
Leather upholstery	●	●
In car entertainment**		
Stereo CD tuner with RDS	●	●
Front speakers	●	●
Tweeters	●	●
Remote stereo controls	●	●



Key ● Standard ○ Optional - Not available

† **Fuel consumption.** These are the results of the fuel consumption test conducted by the Department of Transport. This test is designed to give a realistic indication of on-road fuel consumption.

* **Maximum towing weights** are based on the ability of the car, with two occupants of 75kg each, to restart on a 12% gradient at sea level. At altitudes in excess of 1500 metres, engine output may drop with a reduction in towing capability. Extra weight, such as additional passengers or luggage, should also be deducted from the maximum towing weight.

** For further information please refer to your dealer.

EXTERIOR COLOURS



Berlina Black*



Lime Green Metallic**



Moon Rock Metallic*



Silverstone Metallic*



Royal Navy Blue Pearl*



Nurburgring Blue Metallic*



New Formula Red/Ascari Red



Monza Red Pearl**



New Imola Orange Pearl**



New Indy Yellow Pearl**

* Please note that these are non-standard colours and are available at an extra cost. ** Please note that these are premium colours and are available at an extra cost.

INTERIOR COLOURS



Black leather is available with all exterior colour options with the exception of Nurburgring Blue Metallic.



Red and Black leather is available with the following exterior colour options: Berlina Black, Moon Rock Metallic, and Silverstone Metallic.



Red leather is available with Berlina Black, Moon Rock Metallic and Silverstone Metallic.



Blue leather is available with Nurburgring Blue Metallic.

The Honda S2000 is available in an extensive range of striking colours. All interiors are fitted with high-grade, luxury leather in a choice of colours, that reflect the exterior colour selection. Smart aluminium and chrome finishes feature throughout, further enhancing the stylish design of the Honda S2000.

Please contact your local dealer for further information.



HONDA
S2000