



# Mazda6

Technical data, equipment and colours

# MAZDA6 TECHNICAL DATA

## Bodywork

- Torsionally resistant monocoque all-steel body with energy-absorbing front and rear safety passenger cell, and side impact protection in the doors.

## Engines

A completely new generation of petrol and diesel engines has been developed for the new Mazda6. All engines provide state-of-the-art technology and impressively responsive power delivery combined with low fuel consumption, excellent running smoothness and a high degree of environmental compatibility.

The engine range of the Mazda6 is optimally tailored to the varying requirements of customers in this class.

The range covers five levels from the modern and economical diesel direct injection engine to the powerful DOHC 16-valve 4-cylinder with variable valve control system. (S-VT = Sequential Valve Timing).

### Three MZR Petrol engine variants:

The lead-in petrol engine is a 1.8-litre 4-cylinder with 88 kW/120 ps. A 2.0-litre with 104 kW/141 ps and a 2.3-litre with 122 kW/166 ps are also available.

- Even the 1.8-litre engine with its 88 kW (120 ps) delivers attractive performance figures (122 mph; 10.7 secs 0 – 62 mph)\* in conjunction with high fuel economy.
- The powerful 2.0-litre with 104 kW (141 ps) has even more to offer (129 mph; 9.7 secs 0 – 62 mph)\*.
- Finally, the 2.3-litre engine with 122 kW (166 ps) provides superb refined performance (133 mph; 9.0 secs. 0 – 62 mph)\*. 90% of the maximum torque is already available at 1750 rpm and ensures outstanding acceleration.

\*Figures quoted are for the Mazda6 4-door except the 2.3-litre which is based on Mazda6 5-door.

### Engine features:

- The three new petrol engines are made entirely of light-weight aluminium alloy, from the oil pan to the cylinder head.
- The crankshaft is made of cast iron, but only requires four counterweights in the 1.8- and 2.0-litre versions, which also helps to reduce weight. In the 2.3-litre engine, the crankshaft is fitted with 8 counterweights due to the larger capacity.
- All three power units have a cylinder head with four valves per cylinder in V formation and two upper camshafts which are driven by silent chains.
- In the 2.3-litre, a variable valve control system (S-VT = Sequential Valve Timing) optimises power delivery, fuel consumption and emissions, as well as the torque curve. Two balancer shafts ensure the 2.3-litre engine achieves maximum running smoothness.

### Two MZR-CD Diesel engine variants:

The new diesel engine is a completely newly developed 2.0-litre common-rail direct injection system engine, available either with 89 kW/121 ps or 100 kW/136 ps. Both diesels produce their maximum torque of 310 Nm at a low engine speed (2000 rpm) and thus enable both a sporty and economical motoring style.

### Features of the new diesel generation:

- Common-rail direct injection system.
- Precisely timed pilot and post injections result in a smooth combustion. This virtually entirely eliminates the "knocking" typical of diesel engines.
- Expansive Vertical Vortex Combustion (EVVC). This combustion system ensures optimum combustion, which in turn provides high torque and maximum power delivery, whilst keeping exhaust emissions at a low level.
- A sound-absorbing engine cover also helps suppress noise. The Mazda6 diesel engine brings the quietness and refinement normally found only in a petrol engined car.

## Transmissions

The **five-speed manual transmission** available for the entire range of engines converts engine power into sporty performance.

In the first two gears it is **doubly synchronised**, giving a particularly fast and crisp gear shift. The **optimum positioning of the gear lever**, short throw and precise engagement make for low-effort gear changes.

A gently shifting **4-speed automatic transmission** (for the 2.0-litre petrol engine models) is available as an option. A newly developed oil pressure control module ensures fast response and jolt-free gear shifting, even when accelerating sharply.

The four-wheel drive Mazda6 2.3 Estate AWD is offered with a **5-speed automatic transmission (Activematic)**: here, the driver can change into a manual shift mode at any time, allowing the next gear up or down to be selected by pushing the selector lever forwards or backwards.

## Braking

- ABS with Electronic Brake-force Distribution (EBD)
- Emergency Brake Assist (EBA) (certain models)
- Large-diameter disc brakes (front ventilated)
- Friction-optimised brake pads
- Highly rigid brake callipers
- "Zero-loss" brake booster
- Highly rigid brake hoses

## Chassis

### Front suspension:

The front suspension of the Mazda6 is a sophisticated and completely newly designed **high-mount double wishbone suspension** with two separate lower arms and double pivots. This ensures optimum tyre-to-road contact, minimises negative road inputs and generates maximum directional stability.

The entire construction is based on an **extremely rigid perimeter frame** which guarantees maximum steering precision and directional stability, but also suppresses the transmission of chassis vibration to the body.

### Rear suspension:

The rear suspension is an **E-type multi-link rear suspension** with four cross arms and longitudinal arms. **Angled dampers and low-profile springs** permit optimum packaging which saves cargo space. The **E-shaped multi-link structure** provides excellent suspension geometry and thus precise wheel guidance.

The **self-levelling suspension** on the Mazda6 2.3 Estate AWD ensures optimum driving dynamics under varying load conditions.

### Four-wheel drive:

The **four-wheel drive on the 2.3 Estate AWD** is a premiere for Mazda. Unlike the four-wheel drive technology found on previous Mazda models with centre differential and viscous coupling, the **power distribution between front and rear axle is electronically controlled**.

Sensors on all four wheels provide feedback on speed and slip to a central control which distributes power and torque to the wheels faster and more precisely than is possible with a conventional mechanical system.

## Heating and ventilation

- Five lamella-type **ventilation outlets with close and adjustment function** are distributed across the instrument panel and in combination with the **electronically regulated air conditioning system** provide excellent air through-flow and pleasant interior temperatures.
- Air filter: 3-stage filter
  - Stage 1: Pollen filter
  - Stage 2: Activated carbon filter
  - Stage 3: Filter with active components converting aldehydes into non-harmful substances

# TECHNICAL DATA

Engine	1.8l MZR 5-speed manual transmission	2.0l MZR 5-speed manual transmission	2.0l MZR 4-speed automatic transmission	2.3l MZR 5-speed manual transmission
Grades				
- S	●	–	–	–
- TS	●	●	● <sup>3)</sup>	–
- TS <sup>2</sup>	–	●	●	–
- Sport	–	–	–	●
Type	In-line four-cylinder DOHC 16V	In-line four-cylinder DOHC 16V	In-line four-cylinder DOHC 16V	In-line four-cylinder DOHC 16V
Bore x Stroke (mm)	83.0 x 83.1	87.5 x 83.1	87.5 x 83.1	87.5 x 94.0
Displacement (cc)	1,798	1,999	1,999	2,261 (ing (kW(PS) bei U/min <sup>1)</sup> )
Max. Output (kW (ps)/rpm)	88 (120)/5,500	104 (141)/6,000	104 (141)/6,000	122 (166)/6,500
Max. Torque (Nm/rpm)	165/4,300	181/4,100	181/4,100	207/4,000
Compression Ratio	10.8:1	10.8:1	10.8:1	10.6:1
Recommended Fuel	Unleaded petrol (95 RON)	Unleaded petrol (95 RON)	Unleaded petrol (95 RON)	Unleaded petrol (95 RON)
Gear Ratio				
- 1st Gear	3.666	3.666	2.816	3.307
- 2nd Gear	2.059	2.059	1.497	1.842
- 3rd Gear	1.392	1.392	1.000	1.233
- 4th Gear	0.970	0.970	0.725	0.970
- 5th Gear	0.755	0.755	–	0.755
- Reverse	3.166	3.166	2.648	3.166
- Final Drive Ratio	4.388	4.388	4.416	4.388
Top Speed (mph) <sup>1)</sup>				
- Mazda6 4-door	122	129	121	133
- Mazda6 5-door	121	128	121	131
- Mazda6 Estate	–	126	118	–
Acceleration (0–62 mph in secs) <sup>1)</sup>				
- Mazda6 4-door	10.7	9.7	11.1	TBC
- Mazda6 5-door	11.0	9.9	11.8	9.0
- Mazda6 Estate	–	9.9	12.0	–
Fuel Consumption - mpg (l/100km) urban/extra urban/combined <sup>1)</sup>				
- Mazda6 4-door	25.7(11.0)/47.9(5.9)/36.2(7.8)	25.2(11.2)/45.6(6.2)/34.9(8.1)	23.7(11.9)/40.9(6.9)/32.1(8.8)	23.2(12.2)/40.4(7.0)/31.7(8.9)
- Mazda6 5-door	25.7(11.0)/47.9(5.9)/36.2(7.8)	25.2(11.2)/45.6(6.2)/34.9(8.1)	23.7(11.9)/40.9(6.9)/32.1(8.8)	22.8(12.4)/39.3(7.2)/31.0(9.1)
- Mazda6 Estate	–	25.0(11.3)/44.8(6.3)/34.4(8.2)	23.3(12.1)/39.8(7.1)/31.4(9.0)	–
CO <sub>2</sub> -Emission (g/km) <sup>1)</sup>				
- Mazda6 4-door	185	192	209	212
- Mazda6 5-door	185	192	209	218
- Mazda6 Estate	–	195	215	–
Emissions Compliance	Euro Stage IV	Euro Stage IV	Euro Stage III	Euro Stage IV
Fuel Tank Capacity (l)	64	64	64	64
Tyre Size (Standard)	205/55 R 16	205/55 R 16	205/55 R 16	215/45 R 17
Cargo Room Dimension (l) <sup>2)</sup>				
- Mazda6 4-door	500	500	500	500
- Mazda6 5-door	492	492	492	492
- Mazda6 Estate	–	505	505	–

● Available

– Not available

1) Model test results according to directive 1999/100/EEC

2) Storage volume according to the VDA (non-binding factory specifications)

3) Mazda6 4-door and 5-door only, not Estate

# TECHNICAL DATA

Engine	2.3i MZR AWD 5-speed automatic transmission	2.0i MZR-CD 121ps 5-speed manual transmission	2.0i MZR-CD 136ps 5-speed manual transmission
Grades			
- S	-	●	-
- TS	-	●	●
- TS <sup>2</sup>	-	-	●
- Sport & AWD	●	-	● (not AWD model)
Type	In-line four-cylinder DOHC 16V	In-line four-cylinder SOHC 16V	In-line four-cylinder SOHC 16V
Bore x Stroke (mm)	87.5 x 94.0	86.0 x 86.0	86.0 x 86.0
Displacement (ccm)	2,261	1,998	1,998
Max. Output (kW (ps)/rpm)	119 (162)/6,500	89 (121)/3,500	100 (136)/3,500
Max. Torque (Nm/rpm)	205/4,000	310/2,000	310/2,000
Compression Ratio	10.6:1	18.3:1	18.3:1
Recommended Fuel	Unleaded petrol (95 RON)	Diesel	Diesel
Gear Ratio			
- 1st Gear	3.801	3.416	3.416
- 2nd Gear	2.131	1.944	1.944
- 3rd Gear	1.364	1.258	1.258
- 4th Gear	0.935	0.902	0.902
- 5th Gear	0.685	0.659	0.659
- Reverse	2.970	3.252	3.252
- Final Drive Ratio	3.712	3.588	3.588
Top Speed (mph) <sup>1)</sup>			
- Mazda6 4-door	-	-	124
- Mazda6 5-door	-	121	123
- Mazda6 Estate	119	121	122
Acceleration (0-62 mph in secs) <sup>1)</sup>			
- Mazda6 4-door	-	-	10.4
- Mazda6 5-door	-	11.0	10.6
- Mazda6 Estate	10.9	11.1	10.7
Fuel Consumption (mpg) (l/100km) urban/extra urban/combined <sup>1)</sup>			
- Mazda6 4-door	-	-	34.0 (8.3)/51.4 (5.5)/43.5 (6.5)
- Mazda6 5-door	-	34.0 (8.3)/51.4 (5.5)/43.5 (6.5)	34.0 (8.3)/51.4 (5.5)/43.5 (6.5)
- Mazda6 Estate	18.5(15.2)/34.4(8.2)/26.1(10.8)	34.0 (8.3)/49.6 (5.7)/42.8 (6.6)	34.4(8.2)/52.3 (5.4)/44.1 (6.4)
CO <sub>2</sub> -Emission (g/km) <sup>1)</sup>			
- Mazda6 4-door	-	-	174
- Mazda6 5-door	-	172	174
- Mazda6 Estate	257	177	176
Emission Compliance	Euro Stage III	Euro Stage IV	Euro Stage IV <sup>4)</sup>
Fuel Tank Capacity (l)	62	64	64
Tyre Size (Standard)	215/45 R 17	205/55 R 16	205/55 R 16
Cargo Room Dimension (l) <sup>2)</sup>			
- Mazda6 4-door	-	-	500
- Mazda6 5-door	-	492	492
- Mazda6 Estate	490	505	505

● Available

— Not available

1) Model test results according to directive 1999/100/EEC

2) Storage volume according to the VDA (non-binding factory specifications)

3) Mazda6 4-door and 5-door only, not Estate

4) Euro Stage III for the Mazda6 Estate

# EQUIPMENT

Grade	S	TS	TS <sup>2</sup>	Sport & AWD
<b>Safety</b>				
Anti-lock Braking System (ABS) with Electronic Brake-force Distribution (EBD)	●	●	●	●
Emergency Brake Assist (EBA)	—	—	●	●
Dynamic Stability Control (DSC)	—	—	●	●
Traction Control System (TCS)	—	—	●	●
Xenon headlamps with auto levelling and washers	—	—	—	●
High mounted stop lamp	●	●	●	●
Dual-stage front airbags (driver and passenger)	●	●	●	●
Side airbags (front)	●	●	●	●
Curtain airbags (front and rear)	●	●	●	●
Passenger Airbag Cancel System	●	●	●	●
Headrests and 3-point safety belts on all seats	●	●	●	●
Seat belt retractor with load limiter (front)	●	●	●	●
Intrusion minimizing safety brake pedals	●	●	●	●
Whiplash minimizing headrests (front)	●	●	●	●
ISOFIX Childseat anchorages (rear)	●	●	●	●
Space saver spare wheel	●	●	●	●
Immobiliser	●	●	●	●
Deadlocking	●	●	●	●
Thatcham Cat.1 alarm	●	●	●	●
<b>Exterior</b>				
Body coloured bumpers <sup>1)</sup>	●	●	●	●
Body coloured side moldings <sup>1)</sup>	●	●	●	●
Body coloured mirrors <sup>1)</sup>	●	●	●	●
Body coloured door handles <sup>1)</sup>	●	●	●	●
Tinted glass	●	●	●	●
Roof aerial	●	●	●	●
Alloy wheel 205/55 R 16	●	●	●	● <sup>2)</sup>
Alloy wheel 215/45 R 17	○	○	○	● <sup>3)</sup>
Electric tilt & slide sunroof	—	—	● <sup>4)</sup>	●
Sport styling pack (front bumper with fog lights, rear bumper, side skirts and exhaust tailpipe trims)	○	○	○	● <sup>5)</sup>
Rear spoiler	○	○	○	●
Mudflaps, front	●	●	●	●
Mica/Metallic paint	○	○	○	●

● Standard

○ Option

— Not available

1) For combinations of body colour and interior see pages 10 and 11

2) For MZR-CD Diesel models

3) For MZR Petrol models

4) Not available on 2.0 Estate TS<sup>2</sup> Petrol (manual) model

5) For 2.3 4dr Sport model only. Optional on other models

Grade	S	TS	TS <sup>2</sup>	Sport & AWD
<b>Interior</b>				
Titanium-look centre console	●	●	●	●
Steering wheel, gear knob and handbrake lever (urethane)	●	—	—	—
Steering wheel, gear knob and handbrake lever (leather) <sup>6)</sup>	—	●	●	●
Height and reach adjustable steering wheel	●	●	●	●
Interior trim <sup>1)</sup> – Black cloth	●	—	—	—
Interior trim <sup>1)</sup> – Black sports cloth	—	—	●	●
Interior trim <sup>1)</sup> – Grey velour	—	●	—	—
Interior trim <sup>1)</sup> – Power* leather seats	—	—	○ <sup>8)</sup>	● <sup>9)</sup>
Height adjustable driver seat	●	●	●	●
Lumbar support (driver seat)	—	●	●	●
Illuminated lockable glove box	●	●	●	●
Front armrest with double bottom box	—	●	●	●
Rear armrest with 2 cup holders	—	●	●	●
Bottle holders in door pockets	●	●	●	●
* Driver's seat only				
<b>FUNCTION &amp; COMFORT</b>				
Power steering	●	●	●	●
Remote central door locking	●	●	●	●
Audio system with radio and 4 speakers	●	●	—	—
Bose Premium Audio System with radio and 7 speakers	—	—	●	●
Cassette	●	○	○	○
Single CD	○	●	○	○
Mini Disc	○	○	○	○
6-disc CD–autochanger	○	○	●	●
DVD Satellite Navigation system (only available with power leather seats)	—	—	○ <sup>8)</sup>	○
Clock	●	●	●	●
Outside temperature meter	●	●	●	●
Touring Computer	—	●	●	●
Manual air conditioning	●	—	—	—
Climate control air conditioning	—	●	●	●
Cruise control, with steering switch <sup>7)</sup>	—	●	●	●
Remote audio control, with steering switch	—	●	●	●
Electric windows (front) with one touch up and down (driver's side)	●	●	●	●
Electric windows (rear)	●	●	●	●
Electric heated mirrors	●	●	●	●
Adjustable intermittent wipers	●	●	●	●
Rear window defogger	●	●	●	●
Front door courtesy lamps	●	●	●	●
Karakuri seat (Mazda6 5-door and Mazda6 Estate only)	●	●	●	●
4-speed automatic transmission (2.0 Petrol models only)	—	○	○	—
5-speed automatic transmission-Activematic (Mazda6 2.3 Estate AWD only)	—	—	—	●
4-wheel drive (Mazda6 2.3 Estate AWD only)	—	—	—	●
Auto levelling suspension (Mazda6 2.3 Estate AWD only)	—	—	—	●
Sun visor with illuminated vanity mirror	—	●	●	●

● Standard

○ Option

— Not available

1) For combinations of body colour and interior see pages 10 and 11

6) Handbrake lever only on automatic transmission models

7) Not available on 2.3 MZR AWD

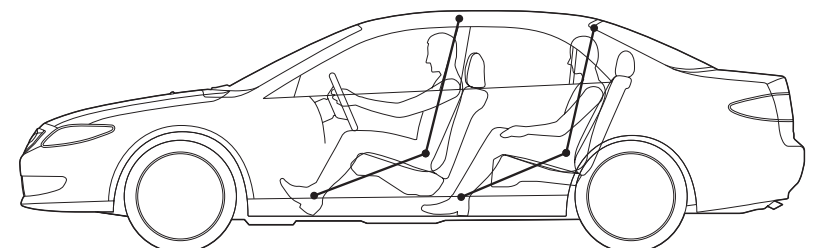
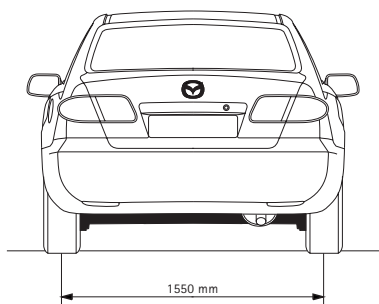
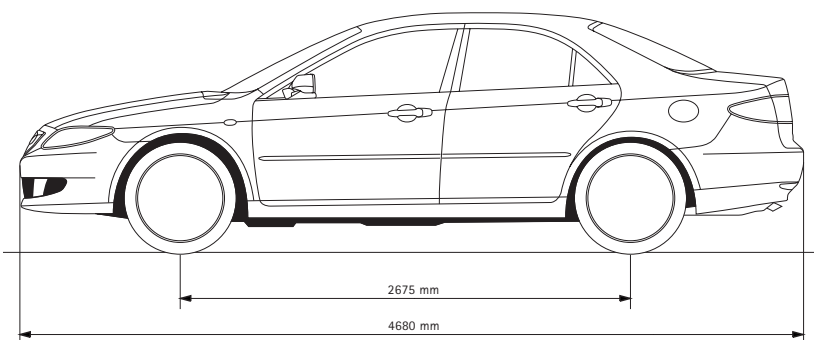
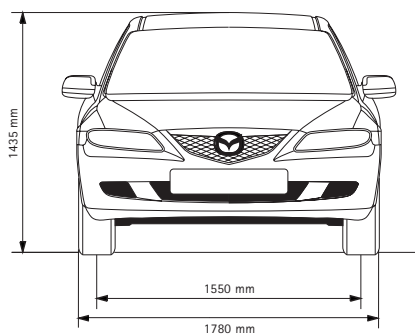
8) Not available on 2.0 Estate TS<sup>2</sup> Petrol (auto) model

9) For 2.3 4dr Sport model only. Optional on other models

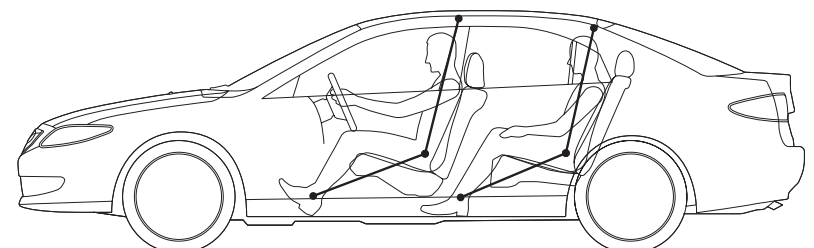
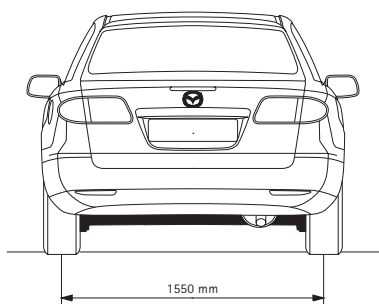
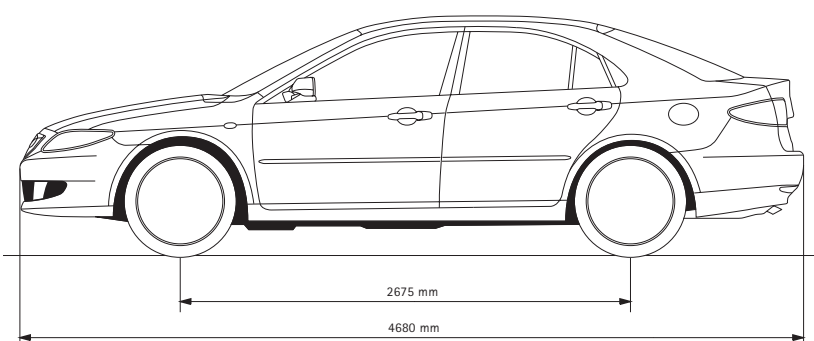
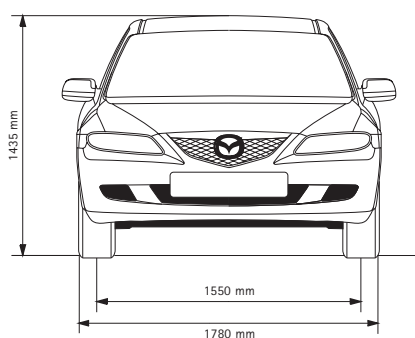


# DIMENSIONS AND WEIGHTS

## Mazda6 4-door

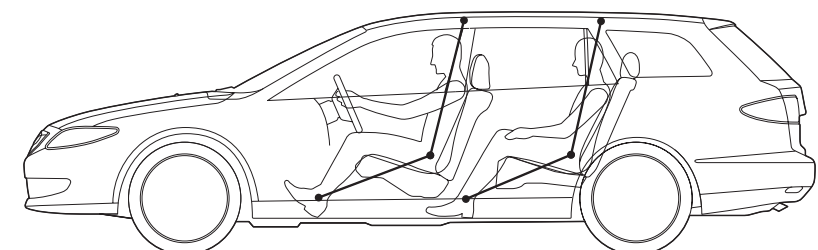
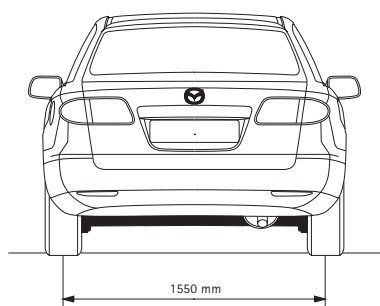
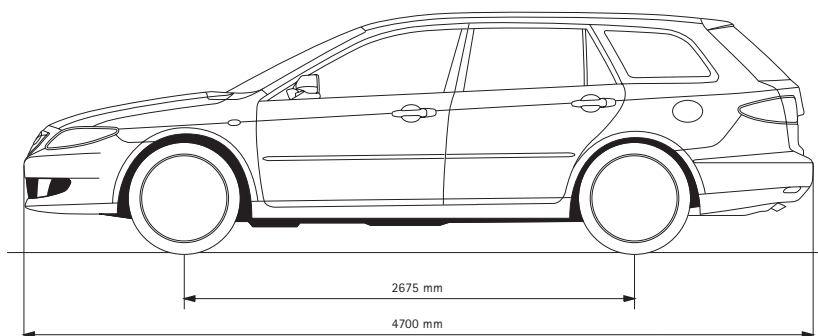
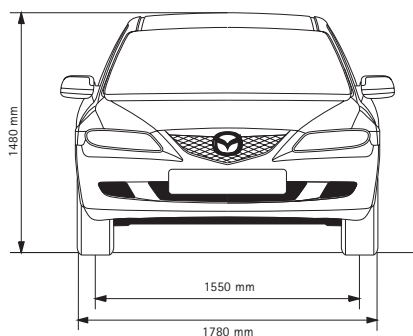


## Mazda6 5-door





## Mazda6 Estate



Exterior – weights and capacities	1.8i MZR	2.0i MZR	2.0i MZR	2.3i MZR	2.3i MZR AWD	2.0i MZR-CD
	5-speed manual transmission	5-speed manual transmission	4-speed automatic transmission	5-speed manual transmission	5-speed automatic transmission (Activematic)	5-speed manual transmission
Gross Vehicle Weight (kg)						
- Mazda6 4-door	1,815	1,840	1,865	1,885	-	1,930
- Mazda6 5-door	1,830	1,855	1,880	1,890	-	1,960
- Mazda6 Estate	-	1,905	1,930	-	2,025	2,010
Max. Kerb Weight (kg)						
- Mazda6 4-door	1,357	1,362	1,387	1,400	-	1,493
- Mazda6 5-door	1,384	1,389	1,409	1,425	-	1,515
- Mazda6 Estate	-	1,410	1,453	-	1,580	1,523 / 1,547 (121 ps) (136 ps)
Roof Load Capacity (kg)	100	100	100	100	100	100
Towing Capacity (kg)						
- 12% slope with brake	1,300	1,500	1,500	1,500	1,600	1,600
- 8% slope without brake	550	550	550	550	550	550

The vehicles' kerb weight can vary according to equipment and extras fitted.

# BODY COLOUR



Eternal Red A3E



Silver Contrail Metallic 25H



Titanium Grey Metallic 29Y



Blue Pacific Mica 25B



Nordic Green Mica 27C



Black Mica 16W



Velocity Red Mica 27A

# COMBINATIONS

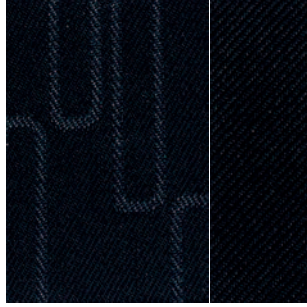
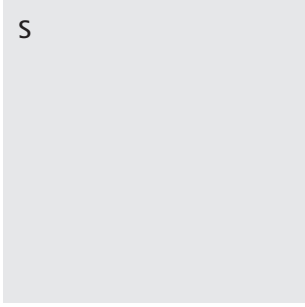
Grade	S	TS & TS <sup>2</sup>	Sport & AWD*
Eternal Red (A3E)	●	●	—
Silver Contrail Metallic (25H)	●	●	●
Titanium Grey Metallic (29Y)	●	●	●
Blue Pacific Mica (25B)	●	●	●
Nordic Green Mica (27C)	—	●	●**
Black Mica (16W)	—	●	●**
Velocity Red Mica (27A)	—	●	●

● Combination available  
 — Combination not available

\* Mica/Metallic paint no cost option on Sport and AWD  
 \*\*Not available on 2.3 4dr Sport model

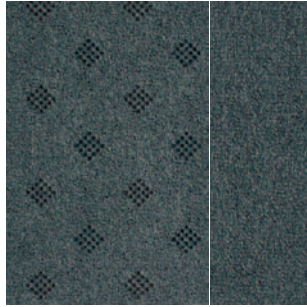
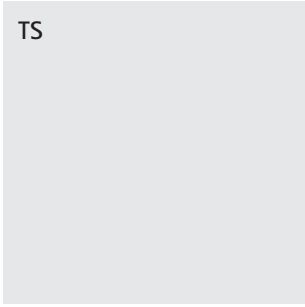
# SEAT TRIM

S



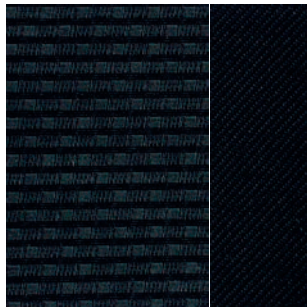
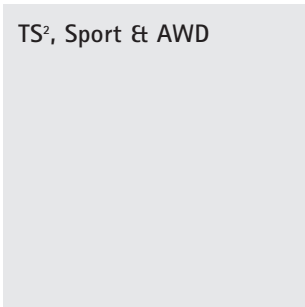
Cloth - Black

TS

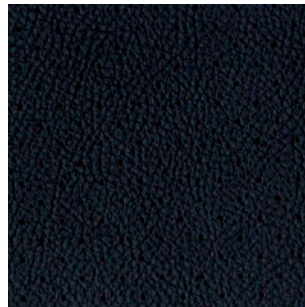


Velour - Grey

TS<sup>2</sup>, Sport & AWD



Sports Cloth - Black



Optional Leather - Black

(Standard on 2.3 4dr Sport model)

# The Mazda6 Warranties



## Warranty Plus – 3 Year Cover

Every Mazda is designed and built to the highest standards of performance, comfort and reliability. For your further reassurance Mazda also provides a full three-year/60,000-mile<sup>1</sup> warranty cover including Mazda European Assistance and a twelve-year anti-perforation warranty.

<sup>1</sup> There is no mileage limit during the first year of the warranty.

## Mazda Momentum – New Vehicle Extended Warranty

At any time during the manufacturer's warranty period you may purchase a Mazda Momentum extended warranty package.

Three options are available. Your Mazda dealer will be pleased to provide you with details.

## Accessories

There is a full range of Mazda genuine accessories for each Mazda model. For more information, contact your Mazda dealer.

## Mazda Credit

Mazda Credit\* provides a comprehensive range of finance plans include:

Mazda MultiOption – A flexible and cost-effective method of funding a Mazda.

Mazda Hire Purchase – A simple, straight and traditional funding plan.

Mazda Business Partner – A range of finance solutions for business customers.

## Mazda Insurance

Mazda Insurance offers a range of motor-related insurance products to protect you and your car. For total motoring peace of mind, please ask your Mazda dealer for details.

## Tax Free – Personal Export, Diplomatic and Military Sales

Significant savings are available for those who qualify, with schemes tailored to suit individual needs. For further information, contact your Mazda dealer or contact Mazda Tax Free Sales on 01932 335132.

## Motability

For all Motability enquiries, please contact Mazda on 08457 484848.

## Your Mazda dealer:

Mazda Motors UK Limited reserves the right to introduce changes in specification and equipment due to its ongoing product development. Colour and trim samples within this brochure may vary from the actual colours because of limitations of the printing process. It is recommended that you consult your Mazda dealer when referring to these.

\*Finance subject to status. Guarantees/Indemnities may be required.

Written quotations: Mazda Credit UK, Central Office, Eagle Way, Brentwood, Essex CM13 3AR.

December 2003.

Internet: [www.mazda.co.uk](http://www.mazda.co.uk)

Mazda Helpline: 08457 484848