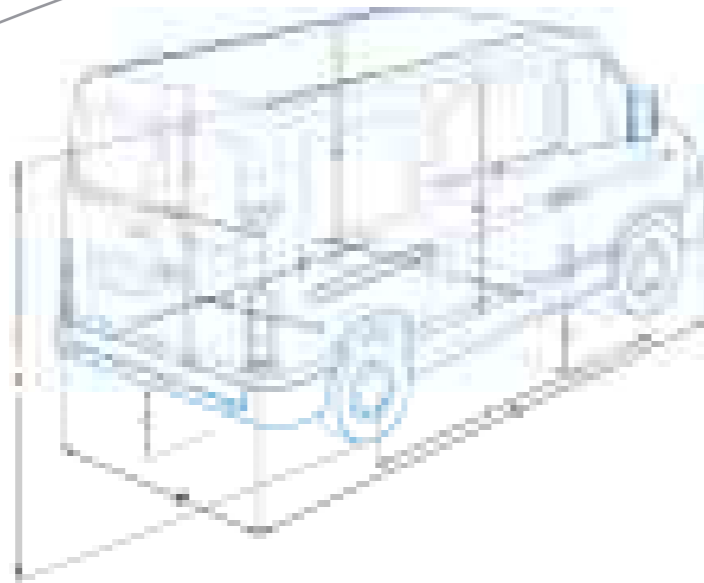


# INTERSTAR DIMENSIONS

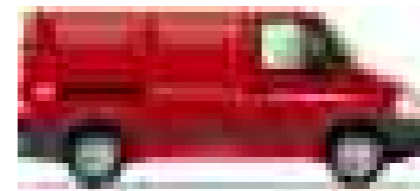
The Interstar range is extensive and practical to ensure there is a version suited to your needs. There are three different lengths and heights, four different engines plus all the variations of colours, trims and options. So browse, create and choose your Interstar.



Dimensions		SWB	MWB	LWB	LWB
		LOW	MID	MID	HIGH
<b>Cargo area dimensions</b>					
A	Height	mm	1670	1912	2146
B	Length	mm	2714	3214	3714
I	Width	mm	1764		
	Volume	m <sup>3</sup>	8	10.8	13.9
C	Sill height	mm	545	541	538
D	Slide door width	mm	1099		
E	Slide door height	mm	1555	1800	
F	Back door height	mm	1632	1874	
G	Back door width	mm	1515		
H	Wheelhouse	mm	1282		
<b>Overall dimensions</b>					
J	Wheelbase	mm	3078	3578	4078
K	Overall length	mm	4899	5399	5899
L	Overall height	mm	2256	2493	2720
M	Overall width	mm	1990		



Low Roof



Short Wheelbase Low Roof



Mid Roof



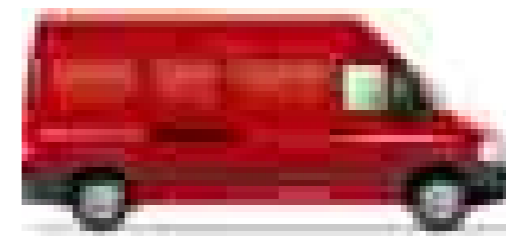
Medium Wheelbase Mid Roof



Long Wheelbase Mid Roof



High Roof



Long Wheelbase High Roof



**Avalanche Z09** S



**Tangerine Z48** S



**Blaze Z52** S



**Signal Blue Z51** S



**Citrus Yellow Z53** S



**Forest Green Z38** S



**Delta Blue Z39** M

S Solid  
M Metallic (option)



**Mercury Z54** M



**Caledonia Blue Z25** S



**Damson Z59** M



TRIM AND COLOURS

# TECHNICAL SPECIFICATIONS

Model		INTERSTAR										
Wheelbase		Short			Medium		Long					
GVW		2.8			3.3		3.5					
Roof height		Low			Mid		Mid			High		
Engine		1.9 dCi 80	2.5 dCi 100	2.5 dCi 100	2.5 dCi 115	2.5 dCi 100	2.5 dCi 115	3.0 dCi 136*	2.5 dCi 115	3.0 dCi 136*		
<b>Engine</b>												
N° of Cylinders		4										
Valves per Cylinder		2		4								
Engine Capacity		cm <sup>3</sup>	1870	2463	2463		2463		2953	2463	2953	
Bore x Stroke		mm	80x93	89x99	89x99		89x99		96X102	89x99	96X102	
Maximum Engine Power		hp	82	100	100	115	100	115	136	115	136	
		rpm	3500			3500		3500		3600	3500	3600
Maximum Torque		Nm	200	260	260	290	260	290	320	290	320	
		rpm	2000	1500	1500	1600	1500	1600	1800	1600	1800	
Compression Ratio		18.3:1	17.75:1	17.75:1		17.75:1		16.9:1	17.75:1	16.9:1		
Fuel Type		Diesel										
Fuel Supply		Direct diesel injection + Common Rail										
Battery		Ah (A)	70 (640)									
Alternator		A	123									
<b>Drive Train</b>												
Number of speeds		5	5	5	6	5	6	6	6	6		
Gear ratio		1st	6.50	6.89	6.76	6.89	6.89		6.72	6.89	6.72	
		2nd	12.16	12.88	12.64	12.88	12.88		12.47	12.88	12.47	
		3rd	19.59	20.76	20.37	20.76	20.76		20.35	20.76	20.35	
		4th	30.12	31.91	31.31	29.52	31.91	29.52	29.54	29.52	29.54	
		5th	38.42	40.72	39.95	38.09	40.72	38.09	38.12	38.09	38.12	
		6th	-	-	-	45.12	-	45.12	47.83	45.12	47.83	
Driven Wheels		Front										
<b>Chassis</b>												
Suspension		Front	Independent double wishbone with coil spring, with stabilizer bar									
		Rear	Leaf springs									
Breaking System		Front: Ventilated Disks Rear: Disks										
Wheel Size		16x6J										
Tyre Size		195/65R16			215/65R16	225/65R16	225/65R16					
<b>FUEL CONSUMPTION &amp; EMISSIONS</b>												
Fuel Consumption <sup>1)</sup> EEC n° 93/116		Urban	mpg	22	26.4	26.4		26.4	20.8	26.4	20.8	
			l/100 km	12.8	10.7	10.7		10.7	13.6	10.7	13.6	
		Extra-urban	mpg	41.5	35.7	35.7		35.7	33.6	35.7	33.6	
			l/100 km	6.8	7.9	7.9		7.9	8.4	7.9	8.4	
		Combined	mpg	35.3	31.7	31.7		31.7	27.4	31.7	27.4	
			l/100 km	8.0	8.9	8.9		8.9	10.3	8.9	10.3	

1) Manufacturer's own figures.

Model		INTERSTAR									
Wheelbase		Short			Medium		Long				
GVW		2.8			3.3		3.5				
Roof height		Low			Mid		Mid			High	
Engine		1.9 dCi 80	2.5 dCi 100	2.5 dCi 100	2.5 dCi 115	2.5 dCi 100	2.5 dCi 115	3.0 dCi 136*	2.5 dCi 115	3.0 dCi 136*	
<b>PERFORMANCE</b>											
Maximum Speed		km/h	131	140	135	143	135	143	153	139	150
		mph	81	87	84	89	84	89	95	86	93
Min. Turning Circle (Wall to wall)		m	12.48			14.11		15.68			
Min. Turning Circle (Kerb to Kerb)		m	12.07			13.75		15.20			
<b>WEIGHTS</b>											
Gross Vehicle Weight		kg	2800		3300	3500	3500				
Kerb weight		kg	1757	1799	1871	1879	1921		1960	1949	1987
Maximum Payload		kg	1043	1001	1429	1621	1579		1540	1551	1513
Gross Axle Weight		kg	1550		1750	1850	1850		1870	1850	1870
		kg	1600		1900	2060	2060				
Max. Trailer Cap.		Braked	2000								
		Unbraked	750								
<b>OVERALL DIMENSIONS</b>											
Length		mm	4899		5399		5899				
Width		mm	1990								
Height (unladen)		mm	2256		2493		2490			2720	
Wheelbase		mm	3078		3578		4078				
Overhang		Front	862								
		Rear	959								
Track		Front	1740								
		Rear	1725								
Ground Clearance (unladen)		mm	150								
<b>CARGO AREA DIMENSIONS</b>											
Maximum Length		mm	2714		3214		3714				
Maximum Width		mm	1764								
Maximum Height		mm	1670		1912			2146			
Minimum Width between the Wheelarches		mm	1282								
Max. Load Platform Height		mm	545		541		538		537		
Cargo Volume		m <sup>3</sup>	8.0		10.8		12.6		13.9		
Slide Door		Width	1099								
		Height	1555		1800						
Back Door		Width	1515								
		Height	1632		1874						
<b>INTERIOR DIMENSIONS</b>											
Head Room		mm	1099								
<b>FUEL TANK</b>											
Fuel tank capacity		l	100								

\* The 3.0 dCi engine will be available later in 2004.

# INTERSTAR EQUIPMENT



## E Grade

### Cargo Area Accessibility

- Unglazed 180° opening rear doors
- Unglazed nearside sliding door
- Rope hooks (6 for shortwheelbase, 8 for medium and long wheelbase)
- Side and rear door activated lamps

### Safety

- Driver airbag
- 3-point seatbelts (x2)
- Seatbelt pretensioners
- High mounted reversing lamps
- Double optic front lamps
- 1/3 tubular bulkhead behind driver
- Panoramic door mirrors
- 4 discs brakes (ventilated front)

### Security

- Alarm
- Immobiliser
- Auto-door lock
- Remote central locking

### Comfort and convenience

- Ergonomic 3-way adjustment driver's seat
- 2-seat front passenger bench
- Tinted windows
- Power assisted steering
- Radio cassette
- Steering wheel audio controls
- Intermittent wash-wipe (windscreen)
- Dash-mounted gear lever
- Driver and passenger cup holders
- Lockable glove box
- Document holder
- Large door pocket

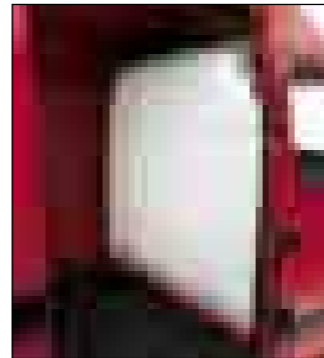
## SE Grade

### As E plus

- ABS with EBA and EBD
- Mono CD Player
- Full metal bulkhead
- Rear parking sensors
- Power windows
- Power and heated mirrors

### Options (on SE Grade)

- Passenger airbag
- Power take-off
- Offside unglazed slide door
- Unglazed 270° opening rear doors
- Climate pack (air-conditioning and heat-reflective windscreen)
- Technology pack (navigation system, cruise control and pre-telephone wiring)
- Glazed pack (glazed bulkhead, glazed 180° opening rear doors and rear defogger)



### FULL STEEL BULKHEAD

The bulkhead offers solid and reassuring protection from sliding loads and helps keep the load compartment secure.



### REAR PARKING SYSTEM

The system has four sensors in the rear bumper and warns you audibly as you move closer to an object behind you.



### POWERED MIRRORS

Conveniently controlled from the driver's door armrest, so you can always keep a clear view behind you.



### ABS WITH EBA AND EBD

The high efficiency Anti lock Braking System gives you extra control during braking, while Emergency Braking Assistance applies in an emergency situation.



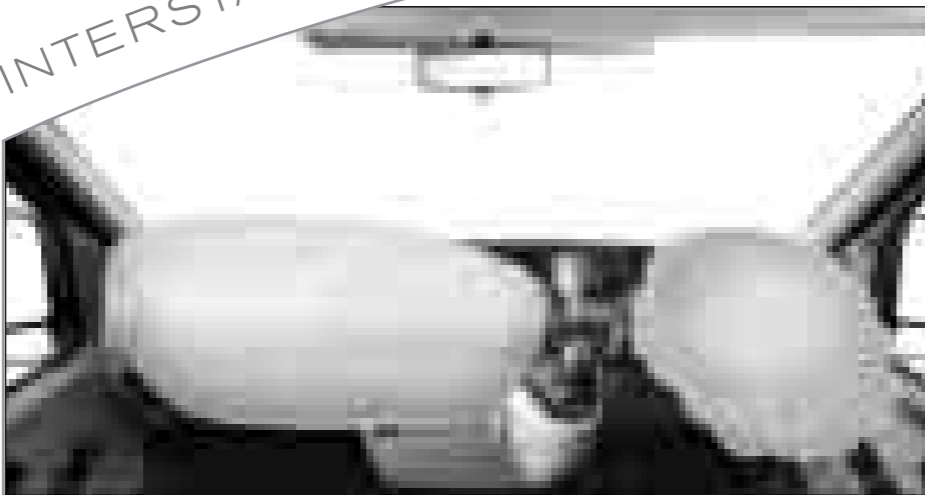
### RADIO CD

Neatly integrated into the dashboard with superb stereo reproduction.

# STANDARD EQUIPMENT ON SE GRADE

# INTERSTAR OPTIONS

As the demands of every business are different, we offer a range of many different options, for alternative load carrying, extra comfort and more convenience. Just a few examples are shown here. Please contact your dealer for the full list of all available options.



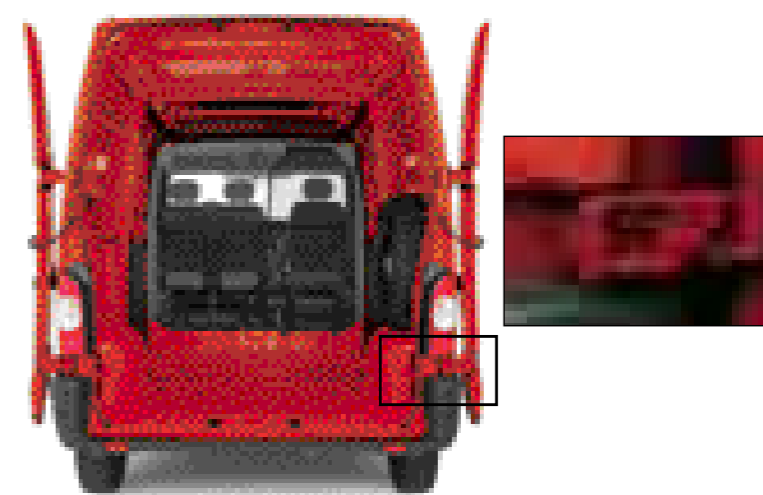
### AIRBAGS

A passenger airbag is available in addition to the driver's airbag, which is fitted as standard across the range.



### FULL STEEL BULKHEAD WITH GLAZING

Provides protection where it's needed the most, from floor level up to the high-mounted window (as part as the glazed pack).



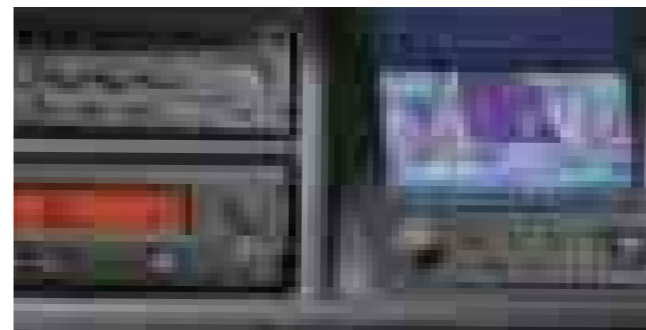
### 270° REAR DOORS

The doors open right back along the side of the Interstar to give you unimpeded access for loading.



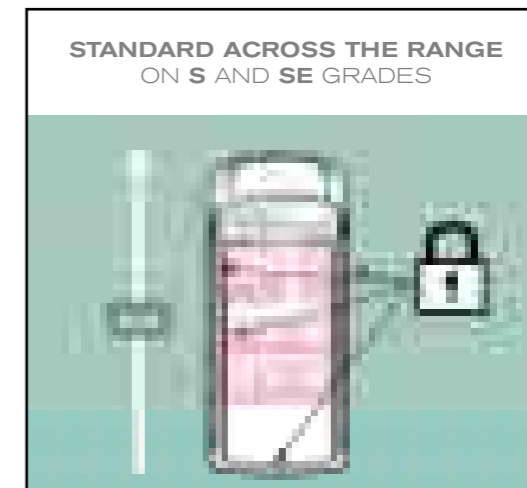
### NAVIGATION UNIT

The satellite navigation system guides you easily to your destination with the combination of a colour map display and spoken instructions.



### AIR CONDITIONING

Helps you stay cool, refreshed and alert at the wheel - a positive contribution to safety.



STANDARD ACROSS THE RANGE ON S AND SE GRADES

### ANTI INTRUSION DEVICE

An extra security device which automatically locks the doors when your speed reaches 5 m/h. The doors can still be unlocked from inside or in the event of an accident.