

# The Honda Jazz 2005



These specification details do not apply to any particular product which is supplied or offered for sale. The manufacturers reserve the right to vary their specifications, including colours, with or without notice and at such times in such manner as they think fit. Major as well as minor changes may be involved. Every effort, however, is made to ensure the accuracy of the particulars contained in this brochure. This publication shall not constitute in any circumstances whatsoever an offer by the Company to any person. All sales are made by the Distributor or Dealer concerned subject to and with the benefit of the standard Conditions of Sale and Warranty given by the Distributor or Dealer, copies of which may be obtained from him on request. This publicity material applies to the UK only Trade Descriptions Act (1969). Whilst efforts are made to ensure specification accuracy, brochures are prepared and printed several months in advance of distribution and consequently cannot always immediately reflect either changes in specification or in some isolated cases the provision of a particular feature. Customers are always advised to discuss specification details with the supplying Dealer especially if your model selection is dependent upon one of the features advertised.

## Honda (UK) - Cars

470 London Road, Slough, Berkshire, SL3 8QY  
Honda Contact Centre - Telephone: 0845 200 8000  
[www.honda.co.uk](http://www.honda.co.uk)



Printed on Recycled Paper

A division of Honda Motor Europe Ltd. No. 857969 Registered in England and Wales

Part No. CARM 1021  
Issue Date: 1/04



At Honda, belief is everything.

It's the belief that we have the power to change things.

To make the ordinary, extraordinary.

To question the status quo.

To take a boundary and extend it.

We believe in all ideas. Big and small. With the Honda Jazz, our aim was to create a car that's stylish, fun to drive and effortlessly practical. Ideal for the city, perfect for getting away from it. That's why, when you step inside, you'll find a small car that's filled with big ideas.

Introduction	3
Exterior Design	5
Interior Design	9
- Magic Seats	11
- Interior Space	13
- Interior Styling	15
Performance	17
Continuous Variable Transmission	21
Safety	23
Product Details	25
Jazz 1.2	27
Jazz 1.4	36
Finance	47
Aftercare	49
Environment	51
Innovation	53
Honda Range	55
Glossary	57
Colour Options	58





### ?When is small actually big

The Honda Jazz is certainly small. Less than 4 metres top-to-tail. But the ideas behind it are big. The compact rear end and distinctive short nose make tight parking spaces open up. The fresh new body and sporty wheels make driving fun. Inside, the innovative layout gives you big-car space. Ultra flexible seating lets you pack what you want, when you want. So when is small actually big? Every time you drive the Jazz.

Model shown is Jazz 1.4 I-DSI SE



Model shown is Jazz 1.4 I-DSI SE

### ?How much space do you need

When it comes to parking, a small one. The Jazz has compact overhangs and a short nose. So you can slot into the tightest parking spots. Start loading and the answer changes. Redesigning the chassis allowed us to push the wheels further into each corner, creating a huge cabin space. This means five adults can stretch out in comfort. Or you can fill up the ample boot with luggage, shopping, whatever you like. One car, many answers.

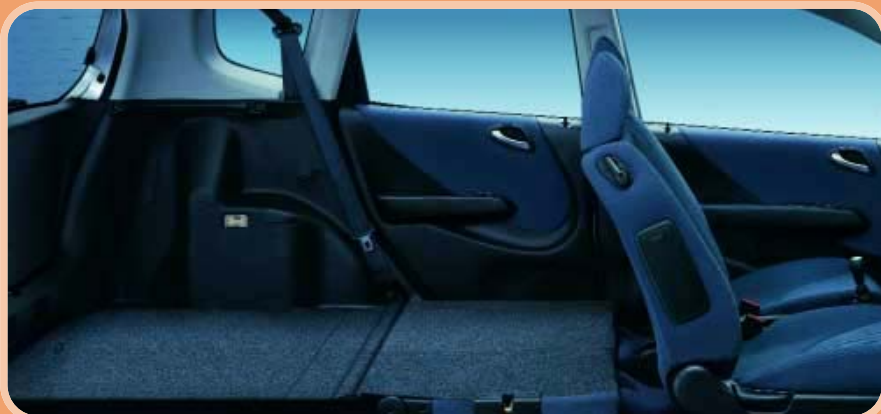


Model shown is Jazz 1.4 i-DSI SE

### ?Do you look at life from every angle

Our designers do. They think about every detail. From top to bottom. Inside and out. From the outside, the Jazz is a small car that's big on style. Its dynamic shape and smooth lines give it a distinctive charm. Door mirror indicators and sculpted headlights blend style with practicality. Four stylish new colour choices offer a greater sense of individuality. Sit inside and you see the bigger picture. The new look interior gives more comfort and character, with the same effortless flexibility. The distinctive short nose frees up cabin space. The large glass area provides a light and airy cabin. So, no matter where the Jazz takes you, you'll always have a great view.





Interiors shown are Jazz 1.4 i-DSI SE

## ?How do you create space

Astronomers say big bangs. We say big ideas. And they don't come much bigger than our unique Magic Seats. Not only do they create more space. They create it just the way you want. With a simple pull at the base, the lightweight

seat flips up. Opening up a wide space most cars just ignore. Better still, because the space is easily reached via the rear doors, curbside loading becomes a breeze. Awkward objects slide in. Tall objects stand upright. Tall passengers benefit

from our flexible seating, too. Leaving the rear seats in their usual position gives them ample room. And you a generous boot to fill. Simply pull the handle and the rear seats fold flat into the floor without removing the headrests.

Expanding the boot space to fit in everything from luggage to the weekly shop. The front passenger seat also lies flat so long objects glide inside, and flexible rear seats split 60:40. So you can create the space to fit your own big ideas.



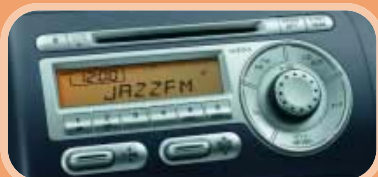
Interiors shown are Jazz 1.4 I-DSI SE



### ?How do you use space creatively

Flexible seating wasn't our only space creating idea. The Jazz is a small car after all. We wanted every millimetre to count. So, we cleverly repositioned both the fuel tank and the engine. This allowed us to shorten the nose and give you greater interior cabin space. It made sense to us. And made much more room for you.





## ?When is luxury not a luxury

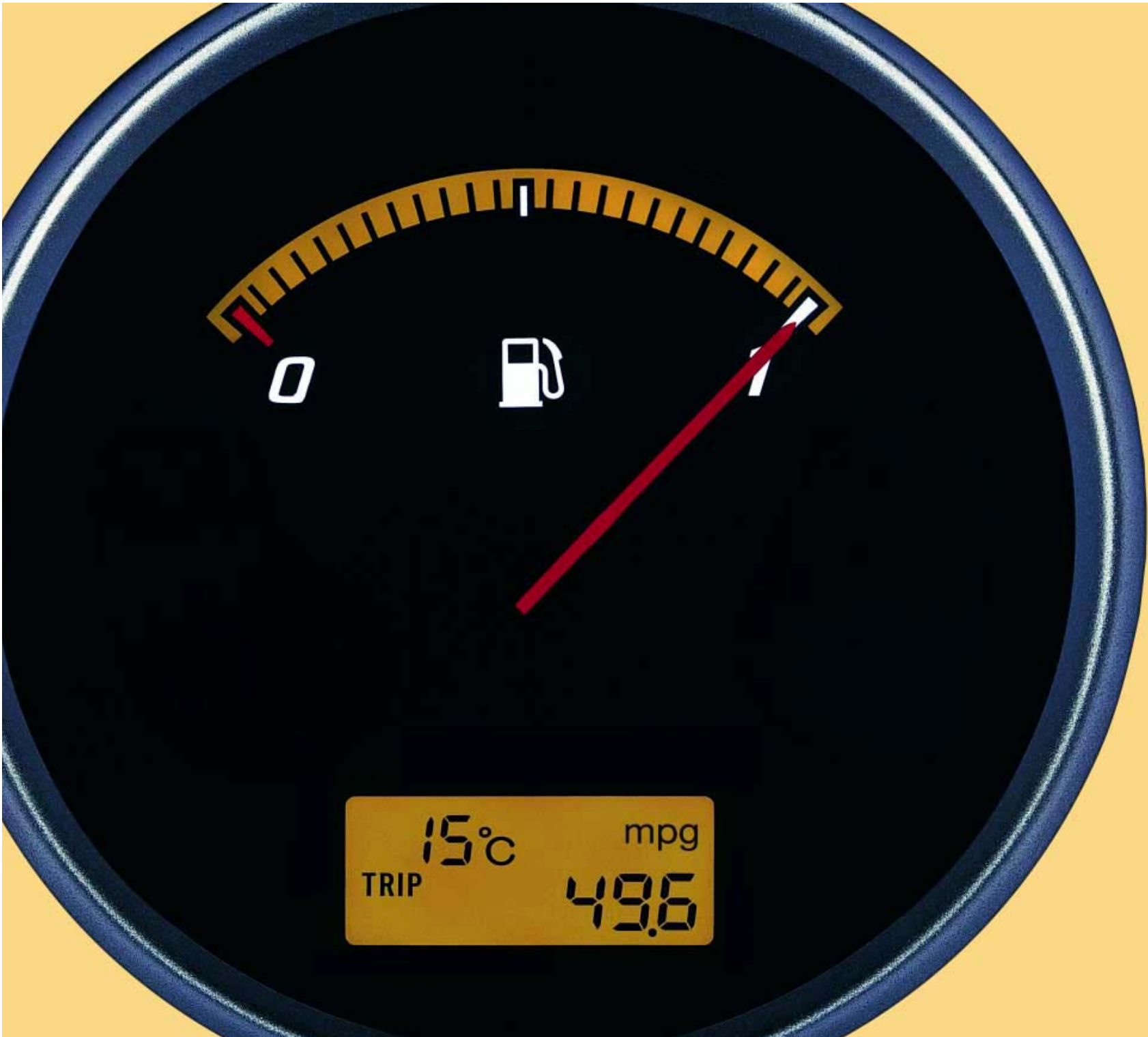
Small-car convenience normally means giving up the luxuries a big-car can offer. Not with the Jazz.

We've made the interior more sophisticated than ever. Fresh dashboard. New quality fabrics. Plus plenty of standard features that are far from standard.

Power steering, central locking and front electric windows make driving easier. The front SRS airbag makes it safer. To help you relax there's a CD player, air conditioning (optional on 1.2 I-DSI S) and optional Satellite Navigation. The dashboard's precision instruments are right at your fingertips. Vital information at a glance. Miles per gallon, speed, outdoor temperature and mileage. All there. The new aluminium trim steering wheel looks great. It also has switches for the audio system (available on 1.4). So you can change track with ease. Sometimes luxury is essential.



Interior shown is Jazz 1.4 I-DSI SE



	15°C	mpg
TRIP		49.6



## ?Why stop when you're having fun

Adventures shouldn't be cut short. Especially not by fuel stops. That's why the Jazz does 450 miles (South coast to Scottish border) on just one tank. How? Intelligence. It's all down to intelligent Dual and Sequential Ignition, or i-DSI. Which is? Put simply, it burns petrol more efficiently, producing more power and torque while keeping a lid on fuel consumption and CO<sub>2</sub> emissions. Result: Non-stop fun.



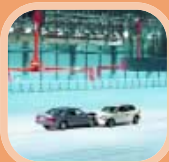


Interior shown is Jazz 1.4 i-DSI Sport



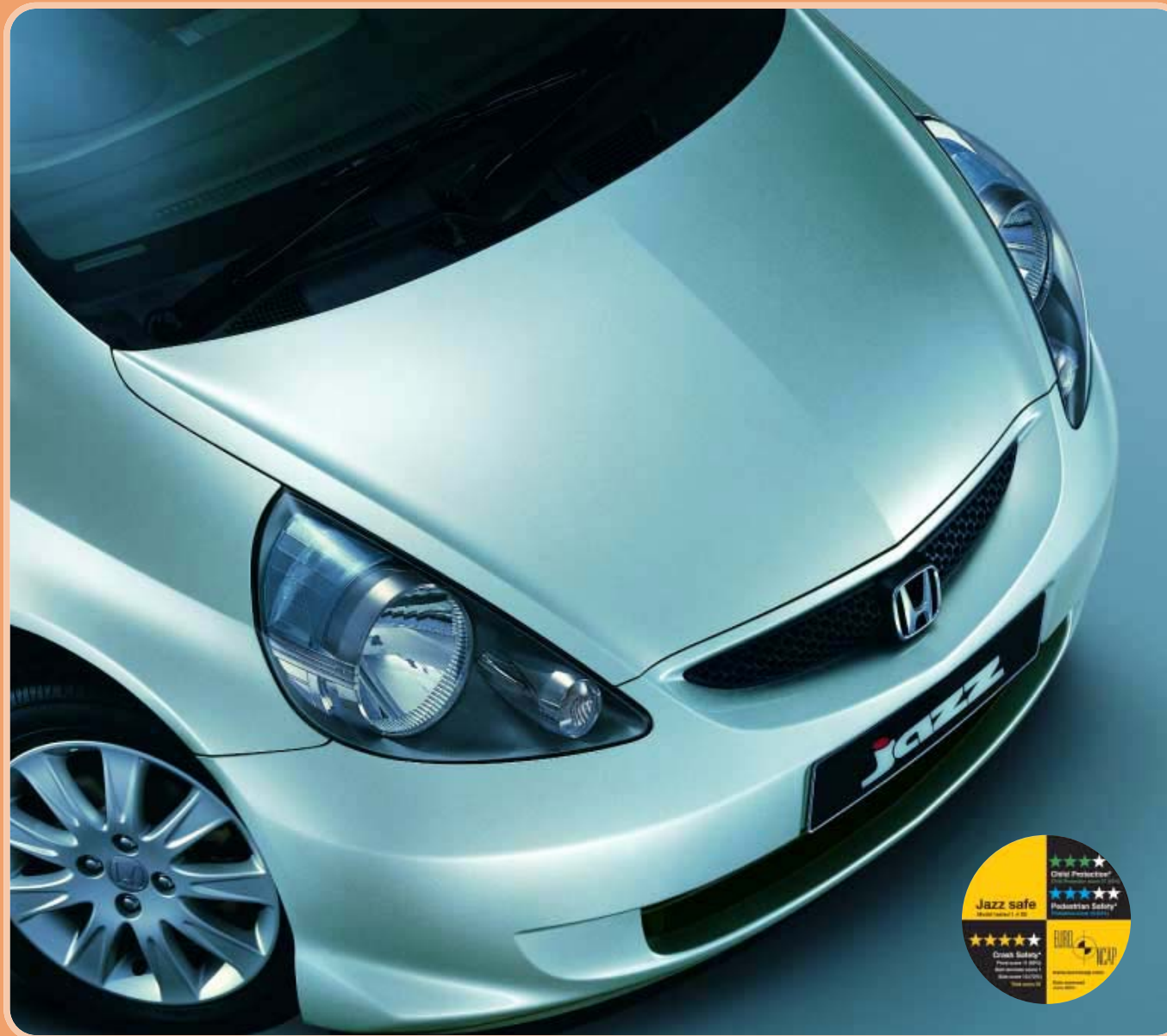
## ?When is driving fun for you

Cruising to the seaside? Or nipping to the shops? Jazz drivers are individuals. They do both. And more. CVT-7 is designed for people who prefer automatics but want more choice. It cleverly allows you three different change modes. Select standard (D) option for a smooth, laid-back drive. You won't even feel the normal gear change sensation. The sporty (S) option gives you that extra kick when you're buzzing round town. Or, if you fancy something a little different, simply switch to 7-Speed Mode. With steering wheel mounted paddles you can change gear up or down manually, in true Formula 1 style. Simply use the left hand paddle to change down, the right hand paddle to change up, or switch back to CVT at any time for an effortless drive.



## ?Can you put a price on safety

At Honda we don't think you can. The Jazz is one of the safest cars around. Its 4-star NCAP safety ratings are outstanding. But its first class safety features come at no extra cost. Front airbags and 3-point seatbelts protect passengers in the event of an emergency. Sometimes you need to brake hard in an emergency. If you do, Anti-lock Braking System (ABS) stops you going into a skid. Even at high speeds on wet, icy or loose surfaces. The system gently pumps the brakes, so your wheels don't lock. Giving you total control when you need it most. Brake on an uneven surface – front wheels on gravel, rear on mud - and Electronic Brakeforce Distribution (EBD) automatically compensates with different brake force to each wheel, ensuring you stop in a straight line. While high-mounted brake lights make you more visible as you come to a stop. Children also get extra protection. The international ISOFix system, regarded as the safest system in the world, secures childseats to the chassis. Your Honda dealer can demonstrate ISOFix with one of our Honda specific Genuine Accessory ISOFix seats. All these come as standard. The only extra? The extra testing we do at Tochigi, our very own crash test centre.







Model shown is Jazz 1.2 i-DSI S

## ?How much fun can you handle

The Jazz 1.2 is the perfect playmate. Its dynamic styling and easy handling make city driving a buzz. Shops to gym. Café to cinema. Country to country. Zip here, zip there. Even parking's a doddle. That short nose isn't just cute. Look inside and you'll see how much fun the Jazz 1.2 can handle.



### ?How much fun can you fit in

We're not suggesting you take up surfing. But if you do, the Jazz 1.2 has plenty of room for your board. Or your mountain bike. Or all those 'sales' bags. Lay the seats flat and you can have that huge boot to play with. Leave the seats in their normal position and you can have four mates to play with. Priceless. Talking of money. The Jazz 1.2 is wallet-friendly. But you still get all the extras. Front electric windows. Front airbags. There's even a CD-player. All as standard. All in one exceptional little motor.

Interior shown is Jazz 1.2 i-DSI S



1.2 i-DSI S



Available with Satin Silver Metallic, Nighthawk Black Pearl, Vivid Blue Pearl, Macha Crème Metallic, Milano Red, Helios Yellow Pearl and Venus Orange Metallic colour options.



**Sports Pack** - perfectly fitting front, rear and side skirts give your Jazz that sportier look. Supplied primed as standard. Includes carpet mats. Front sports grille and 14" alloy wheels available in addition to the pack.



**Honda Sub-Woofers** - 120W max power in a compact package that delivers base that's loud and clear.



**Bluetooth®** - no wires, no hands. Just clearer and safer telephone calls with state-of-the-art Bluetooth technology. Available from February 2005.



**8 Disc CD Changer** - all the hard work of changing the CDs is done remotely, so you don't have to do a thing except sit back and listen.



**Roof Console** - mounted on the ceiling this stylish console offers flexible storage.



**Metal Gearshift Knob** - feel in control handling a stylish gearshift knob.



**Style Pack** - tailgate spoiler, front sports grille and B-pillar garnish give your Jazz a racing look. Supplied primed as standard. Includes carpet mats. Chrome tailgate decoration and 14" alloy wheels available in addition to the pack.



**Alloy Wheel** - 14" 7 spoke alloy wheel.



**Alloy Wheel** - 14" 6 spoke light weight alloy wheel.



**Alloy Wheel** - 14" 5 flat spoke alloy wheel.



**City Pack 1** - stylish protection for the front and rear bumpers, and the side panels of your car. Supplied primed as standard. Includes carpet mats. 14" alloy wheels available in addition to the pack.

## Specification

	1.2 I-DSI S
<b>Engine</b>	
Engine valve type	SOHC I-DSI (Intelligent-Dual Sequential Ignition)
Engine displacement (cc)	1246
Maximum power (PS @ rpm)	77@5700
Maximum torque (Nm @ rpm)	110@2800
Maximum torque (lb/ft @ rpm)	81@2800
Fuel type	Petrol
Recommended fuel rating (Research Octane Number - RON)	95 RON
<b>Fuel Economy<sup>1</sup></b>	
Urban (l/100km)	6.8
Urban (mpg)	41.5
Extra urban (l/100km)	4.7
Extra urban (mpg)	60.1
Combined (l/100km)	5.5
Combined (mpg)	51.4
CO <sub>2</sub> (g/km)	129
Potential range per tank (miles)*	475
<b>Transmission</b>	
5 speed manual	•
<b>Performance</b>	
Acceleration 0-62 mph (secs)	13.7
Maximum speed (mph)	106
<b>Weights and Capacities</b>	
Boot capacity to window seat up (litres, VDA method)	353
Boot capacity to window seat down (litres, VDA method)	845
Fuel tank (litres)	42
Kerb weight (kg)	1015
Turning circle - kerb to kerb (m)	9.4
Maximum towing weight with brakes (kg)**	1000
Maximum towing weight without brakes (kg)**	450
Maximum trailer nose weight (kg)	70
Maximum roof load (kg)	37
Maximum luggage length - front seat up, rear seat down (mm)	1720
Interior height - floor to roof, seat up (mm)	1280
<b>Wheels and Tyres</b>	
Tyres	175/65R14
Wheels	14" steel
Spare wheel	Spacesaver
<b>Instruments and Controls</b>	
Digital clock (built into audio system)	•
Audible headlight on reminder	•
Internally adjustable headlight height	•
Front interior welcome light	•
Tachometer (rev counter)	•
Digital odometer (trip)	•
Digital fuel consumption display	•
Adjustable dashboard illumination	•
Low fuel warning light	•
Digital selected gear indicator	-
<b>Exterior</b>	
Body colour bumpers	•
Body colour door mirrors	-
Body colour door handles	-
Fixed speed rear windscreen wiper	•
Intermittent rear windscreen wiper	-
Roof mounted aerial	•
Electric adjustable door mirrors	•
Glass electric tilt or slide sunroof with sunshade	-
Length (mm)	3845
Width including door mirrors (mm)	1878
Width excluding door mirrors (mm)	1675
Height excluding aerial (mm)	1525
Height including aerial (mm)	1600
Wheelbase (mm)	2450

<sup>1</sup> **Fuel consumption** These are the results of the fuel consumption test conducted by the Department of Transport. This test is designed to give a realistic indication of on-road fuel consumption.

# Specification

	1.2 I-DSI S
<b>Comfort and Convenience</b>	
Boot light	•
Manual air conditioning with pollen filter	◦
Driver vanity mirror with lid in sunshade	•
Passenger vanity mirror with lid in sunshade	•
Front cupholders	•
Luggage tie down rings	•
Driver seatback pocket	-
Passenger seatback pocket	-
Power assisted steering	•
Front electric windows	•
Rear electric windows	-
Tilt adjustable steering wheel	•
<b>Seating</b>	
Drivers seat height adjustment	•
Magic seat flexibility system	•
Front walk-in (on shoulder of front seat)	-
<b>Safety</b>	
Dual front SRS airbags	•
Dual side SRS airbags	-
Anti-lock Braking System (ABS)	•
Electronic Brakeforce Distribution (EBD)	•
Emergency Brake Assist	•
High level rear brake light	•
Side impact protection beams	•
Front seat belt pre-tensioners	•
Height adjustable front seat belts	•
5 x 3 point seat belts	•
ISOFix childseat restraint mechanism	•
Front ventilated disc brakes	•
Rear disc brakes	•
Front head restraints	•
Rear outer head restraints	•
<b>Security</b>	
Rolling code ECU engine immobiliser	•
Honda Superlocks (deadlocks)	•
Externally visible Vehicle Identification Number (VIN)	•
Remote keyless entry	-
Central locking	•
High security integrated audio	•
Tonneau cover	•
Locking wheelnuts	◦
<b>In Car Entertainment***</b>	
Front speakers	•
Rear speakers	-
Stereo CD tuner with RDS	•
Stereo cassette tuner with RDS	◦
Satellite Navigation	◦
<b>Options<sup>††</sup></b>	
<b>City Pack 1:</b> Carpet mats, front bumper protector, rear bumper protector and body side mouldings	◦
<b>City Pack 2:</b> Carpet mats and parking sensor	◦
<b>Convenience Pack:</b> Carpet mats, front fog light, parking sensor, front mud guard and rear mud guard	◦
<b>Sports Pack:</b> Carpet mats, front skirt, side skirt and rear skirt	◦
<b>Style Pack:</b> Carpet mats, front sports grille, tailgate spoiler and B-pillar decoration	◦
<b>Family Pack:</b> Carpet mats, parking sensor, roof console and trunk tray	◦

• standard ◦ optional - not available

<sup>\*</sup> Calculated using a combined cycle. Results will vary according to driving conditions.  
<sup>\*\*</sup> **Maximum towing weights** are based on the ability of the car, with two occupants of 75kg each, to restart on a 12% gradient at sea level. At altitudes in excess of 1500 metres, engine output may drop with a reduction in towing

capability. Extra weight, such as additional passengers or luggage, should also be deducted from the maximum towing weight.

<sup>\*\*\*</sup> For a full listing of options please see price list or your local Honda dealer.  
<sup>††</sup> City Pack 1, Sports Pack and Style Pack supplied primed as standard.

# JAZZ 1.2

Exterior Design	27
Interior Design	29
Model Line Up	31
Options	32
Specification	33



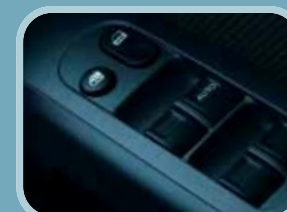
Model shown is Jazz 1.4 i-DSI SE

## ?Where do you see yourself

How about inside the eye-catching Jazz 1.4. It was designed with you in mind. We took the basic Jazz concept (small car, huge cabin, superb fuel efficiency), and made it even more sophisticated. Inside and out. From the sculpted headlights and gently moulded bumpers that give superb aerodynamics. To the integrated mirror indicators for style and enhanced visibility. The new Jazz 1.4 is a car you'll want to be seen in.



Interior shown is Jazz 1.4 i-DSI Sport



## ?What if you had the best of both worlds

The Jazz 1.4's size is economical. Its interior is anything but. Put the key in the ignition and the illuminated dials light up the improvements. High quality fabrics and aluminium touches on the steering wheel create a sophisticated feel. The dashboard with its warm curves looks the part. Its digital displays play their part. Giving you all the

information you need. Fuel levels to outdoor temperature. Optional Satellite Navigation has been improved. So everyday journeys or European adventures are even easier. Altogether the high grade interior says big car. It's only when you park you remember, it's less than 4 metres long.

### 1.4 i-DSI SE



Available with Satin Silver Metallic, Storm Silver Metallic, Nighthawk Black Pearl, Vivid Blue Pearl, Sirius Blue Metallic, Macha Crème Metallic, Milano Red, Helios Yellow Pearl and Venus Orange Metallic colour options.



### 1.4 i-DSI SPORT



Available with Satin Silver Metallic, Storm Silver Metallic, Nighthawk Black Pearl, Vivid Blue Pearl, Sirius Blue Metallic, Macha Crème Metallic, Milano Red, Helios Yellow Pearl and Venus Orange Metallic colour options.





**City Pack 1** - stylish protection for the front and rear bumpers, and the side panels of your car. Supplied primed as standard. Includes carpet mats. 14" alloy wheels available in addition to the pack.



**Fog Lights** - Honda's powerful and stylish oval-shaped fog lights are integrated into the front bumper.



**Bluetooth®** - no wires, no hands. Just clearer and safer telephone calls with state-of-the-art Bluetooth technology. Available from February 2005.



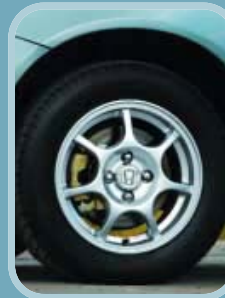
**8 Disc CD Changer** - all the hard work of changing the CDs is done remotely, so you don't have to do a thing except sit back and listen.



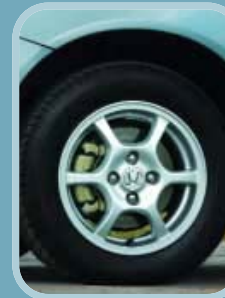
**Honda's Satellite Navigation System** - powerful and accurate yet incredibly user-friendly.



**Style Pack** - tailgate spoiler, front sports grille and B-pillar garnish give your Jazz a racing look. Supplied primed as standard. Includes carpet mats. Chrome tailgate decoration and 14" alloy wheels available in addition to the pack.



**Alloy Wheel** - 14" 7 spoke alloy wheel.



**Alloy Wheel** - 14" 6 spoke light weight alloy wheel.



**Alloy Wheel** - 14" 5 flat spoke alloy wheel.



**Sports Pack** - perfectly fitting front, rear and side skirts give your Jazz that sportier look. Supplied primed as standard. Includes carpet mats. Front sports grille and 14" alloy wheels available in addition to the pack.



**Number Plate Trim** - a chrome trim detail on the tailgate adds to the Jazz's premium look and feel.



**Trunk Tray** - designed to protect your Jazz interior, this soft anti-slip tray is flexible and perfectly fits your boot.



**Roof Console** - mounted on the ceiling this stylish console offers flexible storage.

The Bluetooth word mark and logos are owned by the Bluetooth SIG, Inc. and any use of such marks by Honda is under license. Other trademarks and trade names are those of their respective owners.





## Specification

	1.4 i-DSI SE	1.4 i-DSI Sport
<b>Engine</b>		
Engine valve type	SOHC i-DSI (Intelligent-Dual Sequential Ignition)	SOHC i-DSI (Intelligent-Dual Sequential Ignition)
Displacement (cc)	1339	1339
Maximum power (PS @ rpm)	83@5700	83@5700
Maximum torque (Nm @ rpm)	119@2800	119@2800
Maximum torque (lb/ft @ rpm)	88@2800	88@2800
Fuel type	Petrol	Petrol
Recommended fuel rating (Research Octane Number - RON)	95 RON	95 RON
<b>Fuel Economy (manual/CVT-7)<sup>†</sup></b>		
Urban (l/100km)	7.3/7.2	7.3/7.2
Urban (mpg)	38.7/39.2	38.7/39.2
Extra urban (l/100km)	5.1/5.1	5.1/5.1
Extra urban (mpg)	55.4/55.4	55.4/55.4
Combined (l/100km)	5.8/5.9	5.8/5.9
Combined (mpg)	48.7/47.9	48.7/47.9
CO <sub>2</sub> (g/km)	137/139	137/139
Potential range per tank (miles)*	450/442	450/442
<b>Transmissions</b>		
5 speed manual	•	•
CVT-7 (CVT with 7 speed manual mode)	◦	◦
<b>Performance (manual/CVT-7)</b>		
Acceleration 0-62 mph (secs)	13.3/14.5	13.3/14.5
Maximum speed (mph)	106/99	106/99
<b>Weights and Capacities</b>		
Boot capacity to window seat up (litres, VDA method)	353	353
Boot capacity to window seat down (litres, VDA method)	845	845
Fuel tank (litres)	42	42
Kerb weight (kg, manual/CVT-7)	1041/1066	1064/1086
Turning circle - kerb to kerb (m)	9.8	9.8
Maximum towing weight with brakes (kg)**	1000	1000
Maximum towing weight without brakes (kg)**	450	450
Maximum trailer nose weight (kg)	70	70
Maximum roof load (kg)	37	37
Maximum luggage length - front seat up, rear seat down (mm)	1720	1720
Interior height - floor to roof, seat up (mm)	1280	1280
<b>Wheels and Tyres</b>		
Tyres	185/55R15	185/55R15
Wheels	15" alloy	15" alloy
Spare wheel	Spacesaver	Spacesaver
<b>Instruments and Controls</b>		
Dashboard illumination - White	•	•
Remote audio controls	•	•
Digital clock (built into audio system)	•	•
Audible headlight on reminder	•	•
Internally adjustable headlight height	•	•
Front interior welcome light	•	•
Tachometer (rev counter)	•	•
Digital odometer (trip)	•	•
Digital fuel consumption display	•	•
Adjustable dashboard illumination	•	•
Low fuel warning light	•	•
Digital selected gear indicator	CVT only	CVT only
<b>Exterior</b>		
Body colour bumpers	•	•
Body colour door mirrors	•	•
Body colour door handles	•	•
Fixed speed rear windscreen wiper	•	-
Intermittent rear windscreen wiper	-	•
Roof mounted aerial	•	•
Electric adjustable and heated door mirrors	•	•
Glass electric tilt or slide sunroof with sunshade	◦	◦
Aerodynamic body kit	-	•
Mirror integrated indicators	•	•
Front foglights	-	•
Body colour headlight garnish	-	•
Length (mm)	3845	3855
Width including door mirrors (mm)	1878	1878
Width excluding door mirrors (mm)	1675	1675
Height excluding aerial (mm)	1525	1525

<sup>†</sup> **Fuel consumption.** These are the results of the fuel consumption test conducted by the Department of Transport. This test is designed to give a realistic indication of on-road fuel consumption.

# Specification

	1.4 i-DSI SE	1.4 i-DSI Sport
Height including aerial (mm)	1600	1600
Wheelbase (mm)	2450	2450
<b>Comfort and Convenience</b>		
Leather multi function steering wheel	-	*
Boot light	*	*
Manual air conditioning with pollen filter	*	-
Climate controlled air conditioning with pollen filter	-	*
Driver vanity mirror with lid in sunshade	*	*
Passenger vanity mirror with lid in sunshade	*	*
Front cupholders	*	*
Luggage tie down rings	*	*
Driver seatback pocket	-	*
Passenger seatback pocket	*	*
Power assisted steering	*	*
Front electric windows	*	*
Rear electric windows	*	*
Tilt adjustable steering wheel	*	*
<b>Seating</b>		
Drivers seat height adjustment	*	*
Magic seat flexibility system	*	*
Front walk-in (on shoulder of front seat)	*	*
<b>Safety</b>		
Dual front SRS airbags	*	*
Dual side SRS airbags	*	*
Anti-lock Braking System (ABS)	*	*
Electronic Brakeforce Distribution (EBD)	*	*
Emergency Brake Assist	*	*
High level rear brake light	*	*
Side impact protection beams	*	*
Front seat belt pre-tensioners	*	*
Height adjustable front seat belts	*	*
5 x 3 point seat belts	*	*
ISOFix childseat restraint mechanism	*	*
Front ventilated disc brakes	*	*
Rear disc brakes	*	*
Front head restraints	*	*
Rear outer head restraints	*	*
<b>Security</b>		
Rolling code ECU engine immobiliser	*	*
Honda Superlocks (deadlocks)	*	*
Externally visible Vehicle Identification Number (VIN)	*	*
Remote keyless entry	*	*
Central locking	*	*
High security integrated audio	*	*
Tonneau cover	*	*
Locking wheelnuts	*	*
<b>In Car Entertainment (ICE)**</b>		
Front speakers	*	*
Rear speakers	*	*
Stereo CD tuner with RDS	*	*
Stereo cassette tuner with RDS	o	o
Satellite Navigation	o	o
<b>Options<sup>††</sup></b>		
City Pack 1: Carpet mats, front bumper protector, rear bumper protector and body side mouldings	o	-
City Pack 2: Carpet mats and parking sensor	o	-
City Pack 3: Carpet mats, parking sensor and parking sensor subkit	-	o
Convenience Pack: Carpet mats, front fog light, parking sensor, front mud guard and rear mud guard	o	-
Sports Pack: Carpet mats, front skirt, side skirt and rear skirt	o	-
Style Pack: Carpet mats, front sports grille, tailgate spoiler and B-pillar decoration	o	-
Family Pack 1: Carpet mats, parking sensor, roof console and trunk tray	o	-
Family Pack 2: Carpet mats, parking sensor, parking sensor subkit, roof console and trunk tray	-	o

\* standard    o optional    - not available

<sup>\*</sup> Calculated using a combined cycle. Results will vary according to driving conditions.  
<sup>\*\*</sup> Maximum towing weights are based on the ability of the car, with two occupants of 75kg each, to restart on a 12% gradient at sea level. At altitudes in excess of 1500 metres, engine output may drop with a reduction in towing

capability. Extra weight, such as additional passengers or luggage, should also be deducted from the maximum towing weight.

<sup>\*\*\*</sup> For a full listing of options please see price list or your local Honda dealer.

<sup>††</sup> City Pack 1, Sports Pack and Style Pack supplied primed as standard.

# JAZZ 1.4

Exterior Design	36
Interior Design	38
Model Line Up	40
Options	42
Specification	44



#### ?Why do we find it hard to talk about money

You've studied it. Talked about it. Dreamed about it. Now you have to pay for it. Just doesn't feel like part of the fun, somehow. So we thought, there should be a better way to do this. Not a quick-fix, easy-terms, one-size-fits-all deal, either. Finance that sounds too good to be true usually is. We were thinking 'simple', 'flexible' and 'convenient'. And that's what you get, right from making the deposit.

#### ?So where do we start

With the deposit. Your current car or cash are both fine. You don't have either? No problem: we can work out a zero-deposit package, too.

#### ?Done your sums

The most important part of any finance is the monthly payments. Only you know how much you can really afford. So tell us. That way, we can work out monthly payments to fit in with your budget. Our finance packages are flexible enough to work round just about anything.

After that, it's up to you.

We give you choices right through the process. Including at the end of the agreement. You want to keep the car? Simple: make the final payment and it's all yours. Or, you can give it back. As long as it's in good condition and within the agreed mileage, you can walk away with nothing more to pay\*.

And if you're ready for a new Honda, we'll arrange a part-exchange and a new finance package. Easy, really.

Making our finance more straightforward meant leaving out a few things. The long, complex forms. The dense technical jargon. The wait to see if you've got the go-ahead. We didn't think you'd miss them. We don't. All of which means you get your new Honda quicker.

Of course, none of this is any substitute for talking it over with your local Honda dealer. So now you know what to expect from a visit to us. When can we expect a visit from you?

#### Jazz 1.4 i-DSI SE

OTR Price	£10,500.00
Deposit	£2,000.00
Amount of Credit	£8,500.00
36 Monthly Repayments	£190.00
1 Final Payment (GFV)	£3,981.50
Total Amount Payable	£12,866.50
Annual Contracted Mileage	10,000
Excess Mileage	6p per mile

**12.5% APR Typical**

Information in the table above is purely a guide and is subject to change.

#### Terms and Conditions

The Guaranteed Future Value (\*Honda Aspirations only) will be used to pay the Final Payment if the car is returned after the last monthly payment provided the car has been serviced in accordance with the Honda service book, is in good condition and the maximum permitted mileage has not been exceeded. A £95 Credit Acceptance Fee is included in the monthly payments and a £45 Option to Purchase Fee is included in the final payment (GFV). Indemnities may be required in certain circumstances. All figures are correct at time of publication but may be subject to change. Credit provided by Honda Finance Europe Plc., 470 London Road, Slough, Berkshire, SL3 8QY.

**?Want to predict the future**

The Jazz, like all Hondas, is made to our exacting standards. But we take nothing for granted. So the Jazz is covered by a 3 year manufacturer's warranty\*. You can extend this period of cover with a Hondacare Guarantee and give yourself peace of mind for up to a further 4 years. Hondacare Guarantee is unique and only available from authorised Honda Dealerships.

Just choose the period of cover you want - from 4 months to 4 years. Then sit back and relax, knowing that help is only a telephone call away. Unexpected repair bills will be settled immediately.

Further benefits include:

- Repairs carried out by Honda trained technicians.
- Guarantees the use of only Genuine Honda parts.
- Hondacare Assistance - Honda's comprehensive breakdown and recovery package.

Just ask your authorised Honda Dealership for more details.



**?Like beneficial insurance rates**

The Honda Owners Insurance scheme has been specially designed so that Honda owners receive beneficial insurance cover at competitive rates. To obtain details of all the benefits included and to receive a quotation, please contact your authorised Honda dealer or call 0845 200 8000.

**?Is help at hand when it really matters**

With Honda it is. Because if you're unlucky enough to have an accident, we have a free Hondacare Accident Helpline that will sort all the details for you and make it a priority to get your car back on the road. In the event of an accident please telephone 0800 521 728.

\*Subject to the Warranty terms and conditions listed on pages 15 and 16 of your service book.

**?Shouldn't the last thing you think about be maintenance**

A Hondacare Maintenance Plan\*\* means you won't have to think about it at all. It covers you for all servicing and maintenance costs and can be paid for by Direct Debit in monthly installments. So you can get on with enjoying your car.

It's competitive and flexible.

All servicing is undertaken by Honda dealers. This gives you access to fully qualified technicians and an established network of dealers throughout the UK.

It means your car will only ever be serviced and repaired with genuine Honda parts.

It protects the value of your car.

It's backed by Hondacare Assistance, giving you peace of mind 24 hours a day every day of the year.

It's backed by a Honda Manufacturer Warranty.

For full details, please contact your Honda dealer.

**?Can your car get the service you do**

We spend a lot of time working out the best service we can give to our customers. And you'd expect us to also come up with the best service for your car, too. So we designed Hondacare Budget Plan Servicing\*\*. This way, you can spread the cost of servicing your car with fixed monthly payments. It's available for new and used Honda cars, and for private and business users too.

\*\*Terms and conditions apply.

9,000 Miles/12 Months	
HR-V • S2000 • NSX • Legend • Insight Civic Diesel (3 door and 5 door)	
Months	Miles
12	9,000
24	18,000
36	27,000
48	36,000
60	45,000
72	54,000
84	63,000
96	72,000
108	81,000
120	90,000
132	99,000
144 <sup>1</sup>	108,000

12,500 Miles/12 Months	
Jazz • Stream • FR-V • CR-V Civic 4 door/IMA • Civic Type-R Civic Petrol (3 door and 5 door) Accord Saloon and Tourer (Petrol and Diesel)	
Months	Miles
12	12,500
24	25,000
36	37,500
48	50,000
60	62,500
72	75,000
84	87,500
96	100,000
108	112,500
120	125,000
132	137,500
144 <sup>1</sup>	150,000

<sup>1</sup>Should mileage exceed 144 months or 108,000/150,000 miles, please contact your local Honda dealer to obtain a Continuation Service book.

Jazz i-DSI	Transmission	CO <sub>2</sub> (g/km)	VED Band	Fuel Economy combined (l/100km/mpg)
1.2 i-DSI S	Manual	129	A	5.5/51.4
1.4 i-DSI SE	Manual	137	A	5.8/48.7
1.4 i-DSI SE	CVT-7	139	A	5.9/47.9
1.4 i-DSI Sport	Manual	137	A	5.8/48.7
1.4 i-DSI Sport	CVT-7	139	A	5.9/47.9



### ?Ever tried a little blue sky thinking

We love this planet as much as you do. And we're well aware that a global corporation that builds cars has to take its responsibilities very seriously. And that's why we only ever build cars with the future in mind. A lot of damage has been done since the invention of the internal combustion engine, but thanks to cutting-edge technology we're aiming to cut it out all together.

Our manufacturing plant in Swindon is reducing the amount of landfill waste it produces. At the going rate, we're on track to cut that figure to zero by 2010. The development of our 3R concept - reduce, reuse, recycle - allows us not only to apply our principles throughout the plant, but also provides an educational tool for local schools and councils who visit us on a regular basis.

We've made technological developments that radically reduce emissions too. Like the Insight. It's the most fuel-efficient sports coupé in existence thanks to its Integrated Motor Assist technology.



The same technology you'll find in the 4 door Civic Executive, winner of Best Fuel Economy and Best

1-1.4 litre Engine at the 2003 International Engine of the Year Awards and the BP Green Fleet award for vehicle innovation. Our new generation i-series engines, such as our i-VTEC engine, are on course to produce 75% less HC (hydrogen and carbon atoms) and NOx (oxides of nitrogen) emissions by 2005, as well as on course to meet the 2010 fuel economy criteria in all weight categories.

Ahead of new regulations due to come into force in 2006, we've reduced our motorcycles' emissions and fuel consumption by 30%. And the production of road-going two-stroke engines is now a thing of the past. Even when it comes to boats, if you're

after an outboard engine, with Honda you'll only ever get the cleaner four-stroke version.

At Honda, if we have an idea, we want to make it happen. Take the groundbreaking FCX fuel-cell electric vehicle, which produces only water as a by-product. The first car of its kind to obtain approval for commercialisation in the US, it's fuelled by the chemical reaction between hydrogen and oxygen - we've even built a solar-powered hydrogen fuelling station at our research institute in Los Angeles. It's the greenest vehicle on the planet, and it's already driving around the streets of Tokyo and LA.



Not only are we cutting environmentally damaging emissions, we're actively putting something back in.

At participating Honda Dealerships, customers could now receive a Tree-Tube as a thank-you present. Each tube is equivalent to three months' worth of CarbonNeutral® driving, promoting projects that absorb, neutralise and offset the carbon dioxide emissions produced by car driving. So, not only are we planting forests in the UK, we're also swapping kerosene burners for solar panels in Sri Lanka and introducing energy efficiency equipment in poorer homes across the USA. And there are more projects on the way.

We're also rewriting the rulebooks by changing the way people think about transport. We know that cars have become so popular that the planet is becoming gridlocked. That's why we've introduced traffic-reduction schemes in Japan, such as the Intelligent Community Vehicle System, which encourages shared use of vehicles in urban areas. We want to create more public space, reduce traffic, lower pollution and provide an improved living environment for everyone.

At Honda we want to fill the world with great ideas. Not pollution.

**?Why stop when you reach the limit**

Think of some of the world's most innovative creations. The people who made them dared to challenge convention. At Honda, we let nothing get in the way of a good idea. We encourage our designers to test the boundaries of science as well as their own imaginations. That's why our cars, motorcycles, ATV's, powerboat engines and power equipment products are used the world over, consistently winning new awards, new accolades and new friends.

But it doesn't stop there. After witnessing an aerobatics display as a schoolboy our founder, Soichiro Honda, dreamed of creating an aeroplane. Eighty-seven years later our engineers are putting the finishing touches to the HondaJet. True to Honda's belief in finding solutions through innovation and imagination, the jet challenges standard aircraft design. Its HF118 turbofan engines are located on the upper sides of the wings, part of a groundbreaking design that reduces drag at high speed and increasing fuel efficiency by 40%. This break from conventional design also allows for 30% more cabin space. It goes to show what you can achieve by letting your imagination run free.

On the ground our desire to innovate is as strong as it's ever been. This applies as much to bicycles as it does to Formula 1 racing cars. On two wheels, we have recently perfected the RN01 downhill mountain bike, with its unique gearbox system that allows cyclists to change gear without the need to pedal. This revolutionary design was born out of an enthusiastic idea that was allowed to flourish, rather than a design requirement. On the track, our Formula 1 programme has seen young British contender Jenson Button rise to the podium eight times so far in the 2004 season, the Honda engines providing credible and consistent rivalry to those of the dominant Ferrari team.

Some innovations come from the heart. One Honda engineer, who hated diesel engines so much, made it his mission to revolutionise them. The I-CTDI sets a new benchmark in diesel technology. High in torque and low in fuel consumption, it's unique closed deck aluminium construction, one of the only aluminium diesel engines on the market, offers power, cleanliness and an incredibly low noise output, creating a level of performance that rivals the very best in the market. It's part of our constant mission to reduce emissions and create cleaner vehicles – like the FCX series.

These vehicles use hydrogen fuel cells as their power source, producing only water as a by-product. When it comes to engines, you don't get much cleaner than that. And then there's ASIMO. Our famous robot. With his ground breaking abilities in balance, manoeuvrability, face and voice recognition, he represents our vision of creating technologies that go way beyond our everyday perceptions of transport and mobility.

Our latest inspiration comes in the form of an intelligent night-vision system, which uses infrared cameras to see in the dark and is the world's first system to detect pedestrians or moving, heat-emitting objects such as animals that are in the vehicles path, or even judged to be moving into that path. The system warns the driver via an audio caution linked to a 'heads-up' display above the dashboard.

Even when it comes to safety we look beyond the expected. As one of the first manufacturers to develop pedestrian safety technology, we continue to place importance in this area. Our latest innovation is the 'pop-up' bonnet system. It uses sensors in the bumper to indicate whether an impact with a pedestrian has occurred. This triggers a mechanism that raises the rear portion of the engine hood away from the hard components found underneath it. Our Head Injury Criteria are reduced by up to 40% when this system is fitted.

All these innovations are in constant development, and there are new ideas being born every minute. We are always looking to improve, to make our products cleaner, safer, more efficient. It's all part of our continuing mission to push back the boundaries of science, to turn inspirational ideas into reality.





Jazz



Insight



HR-V



S2000



Civic 3 Door



Civic 5 Door



FR-V



Civic 4 Door



Stream



CR-V



Accord Saloon



Accord Tourer

## ?What do all Honda cars have in common

More than you might think to look at them. They're all unique. But every Honda is designed to excite, inspire and perform.

How do we turn that dream into reality? Through world-class engineering and innovation. Show us a boundary, and we'll push it, whether in aesthetics, safety, driving dynamics or engine technology. Our VTEC engines deliver the exact amount of power needed, at the precise moment it's asked for. Our new i-CTDI is as quiet and refined as a petrol engine but with all the fuel consumption and tax benefits of diesel. And our multi award-winning Integrated Motor Assist (IMA) ingeniously combines petrol and electric motor technology to save fuel, tax and money.

We're obsessed with detail and build quality. If a conventional process doesn't produce the results we want, we'll invent a new one that does. Like our advanced dip-and-roll painting technique, designed to prevent air bubbles forming under the surface of the paint.

We even build some of the machines that build our cars. The Civic 3 door, Civic 5 door and CR-V all start life at our Swindon plant, in which we've invested £1.15 billion since its opening. Making it one of the world's most sophisticated production lines. But it's not just what's inside our buildings that meets with others' approval: in October 2002, the Chartered Institute of Building gave us its prestigious 'Building Award' for our second European car plant.

But there's another, even more important element you'll find in every Honda. A shared heritage, the engineering equivalent of DNA. Which is? Racing. It was the lifelong passion of our founder Soichiro Honda, and we're still competing at the highest level today. In 2002, our Synchro Motorsport Team drove the Civic Type-R to 17 British Touring Car Championship (BTCC) victories – including the overall Driver's and Team titles.

As well as providing the perfect proving ground for new technology, racing teaches the importance of safety. Which is why we've built the world's largest indoor crash-testing facility. We've also developed the most advanced crash-test dummies in existence: the AA presented us with a special award for our work in developing pedestrian-friendly vehicles. And of course, all that work is in your new Honda, too.

Every Honda model is a product of the power of dreams. It's what brings them all together. And makes them completely unique.



## GLOSSARY

**ABS** The Anti-lock Braking System prevents the wheels from locking when the brakes are applied in an emergency, reducing the possibility of a skid on wet, icy or loose surfaces, and enabling the driver to retain steering control.

**CO<sub>2</sub>** Carbon dioxide is one of the exhaust gases believed to be one of the causes of the green house effect. The lower the CO<sub>2</sub> emissions, the better for the environment.

**EBD** Electronic Brake-force Distribution works in tandem with ABS analysing weight distribution around the car and automatically adjusting the braking force applied to front and rear wheels to help maintain directional stability.

**Torque** Torque is a twisting or rotational force. For example, when you use a spanner to tighten a bolt, you are actually applying torque to turn the bolt. The further out you hold the spanner, the more torque you apply. Low rev torque is the ability of an engine to develop strong response (rotational force), and hence, acceleration from lower revs and speeds.

As speed rises, torque becomes less important than power for maintaining high speeds.

**Power** Power is a measurement of how fast work can be done.

**I-DSI** Burns petrol more efficiently, producing more power and torque while keeping a lid on fuel consumption and CO<sub>2</sub> emissions.

**CVT-7** It's like having 3 gearboxes in one. Each mode of the Continuous Variable Transmission - 7 speed (CVT-7) is available at the touch of a button. If you want instant get-up-and-go, there's 'S', sport mode. But for those times when you're looking for a different style of driving, simply select 'D' for normal drive and you've got the perfect balance of performance and fuel economy. The third option is a full 7-speed gearbox, which, like a Formula 1 car, can be operated from paddles in the steering wheel.



Model shown is Jazz 1.4 I-DSI SE