



The new A4 and S4 Saloon and Avant
Pricing and Specification Guide



A User's Guide

This guide has been designed to help you tailor and price your chosen Audi model quickly and logically. At the back of this guide, there is a fold-out configurator which you can fill out as you go along. Here you will also find information on CO₂ emissions-based taxation and the other services offered by Audi, including Finance and Insurance. Alternatively, you can go to audi.co.uk and configure your Audi online.

Table of content

	Page Number
A4 Saloon and Avant	4
Standard equipment	6
SE trim	8
S line trim	10
S line Special Edition	12
S4	14
quattro®	16
Engines and transmissions	18
Audi exclusive	20
A4 and S4 Saloon and Avant prices	22
Technical data	24
Paint finishes	28
Upholstery	32
Additional upholstery options	34
Packages	35
Wheels, tyres and suspension	36
Audio and communication	38
Seats	39
Safety and security	40
Steering wheels	41
Interior equipment	44
Exterior equipment	45
Colour and trim guide	46
Audi Centre-Fitted Accessory Packs	48
CO ₂ data and information	50
Servicing	50
Service by Design	51
Pricing information	52

A4 Saloon and Avant

The Audi A4 takes on two very different yet equally impressive forms – Saloon and Avant. Both models are stylish, dynamic and technologically sophisticated – the product of Vorsprung durch Technik, exceptional craftsmanship and innovation. Featuring the muscular Audi single-frame grille, sleek aluminium window trims and – on the Avant – polished aluminium roof rails, this model's sporting character is instantly recognisable from its athletic profile. There's an extensive choice of powerful petrol and TDI® diesel engines – the 256PS 3.2 FSI quattro and the 233PS 3.0 TDI quattro, to name just two – as well as an impressive variety of other performance features, including servotronic speed-related power steering and 16" 9-arm alloy wheels.

Both Saloon and Avant models boast comfortable, luxurious and elegant interiors – all whilst retaining hints of the sporting capabilities that lie beneath the surface. Smooth, brushed aluminium inlays and electronic climate control are included as standard, with an ingenious and versatile twin-level luggage floor system in the Avant – the ideal choice for an active, varied lifestyle. But these are merely some of the standard features. Over the next few pages you'll find optional equipment, trim upgrades, packages and accessories – all designed to help you configure your A4 to your exact specifications.





Standard equipment

All A4 models have the following items of standard equipment:

12V power socket in luggage area (Avant only)

4-spoke steering wheel

7J x 16 '9-arm' design alloy wheels with 205/55 R16 W tyres.
2.0 TFSI and 6-cylinder models have 215/55 R16 Y tyres

Anti-lock Braking System (ABS)

Anti-Slip Regulation (ASR) – traction control

Anti-theft device – Thatcham Category 1 Approved

Chorus radio with single front-loading CD Player

Chrome exhaust pipe. Twin on 2.0 TFSI and 3.2 FSI petrol engines, downturned design on diesel engines

Chrome trim strips for cup holders and tuning knobs for radio

Colour-coded bumpers, door mirrors and handles

Digital clock with date

Driver and front passenger two-stage airbags

Electric front windows

Electrically operated door mirrors

Electronic Brake-force Distribution (EBD)

Electronic climate control with individual driver and front passenger temperature controls

Electronic Differential Lock (EDL) traction control

Electronic Stability Programme (ESP)

Front and rear tailored floor mats

Front and rear fog lights

Full-size spare wheel

Halogen headlights

Head restraints for all five seats



Heat-insulating tinted glass

Inlays in brushed grey aluminium

Locking wheel bolts

Mikado cloth upholstery

Power-assisted steering

Rear window wash/wipe (Avant only)

Remote-control central locking

Removable and retractable luggage cover (Avant only)

Roof rails finished in polished aluminium (Avant only)

Safety steering column with height and reach adjustment

Seatbelt reminder

servotronic, speed-related power-assisted steering
(2.0 TFSI and 6-cylinder models only)

Scuff plates with metal insert

Side airbags for front seats

Side-impact protection

Sideguard – airbag head-protection system

'Soft-touch' luggage compartment release

Split-folding rear seat – 1/3, 2/3 or completely (Avant only)

3-point seat belts with pre-tensioners for all seats

Tool kit in luggage compartment

Twin-level luggage floor system (Avant only)

Visible Vehicle Identification Number (VIN)

Warning triangle



SE trim

When we designed the SE package, we had one person in mind – you. Featuring driver-oriented specifications such as cruise control, Driver’s Information System and 4-spoke leather steering wheel, this impressive upgrade delivers luxury, exclusivity and technological sophistication, making every journey you undertake in your Audi A4 the most comfortable you’ve ever had.

Includes

7J x 16 ‘5-arm Trapez’ design alloy wheels with 205/55 R16 W tyres

2.0 TFSI and 6-cylinder models have 215/55 R16 Y tyres

4-spoke leather steering wheel

Aluminium window-trims framing the exterior side windows

Concert radio with single front-loading CD with MP3 file compatibility

Cruise control for holding any speed above 25mph

Door mirrors – electrically operated and heated including heated washer jets

Driver’s Information System (DIS)

Electric rear windows

Inlays in aluminium, facette silver

ISOFIX child-seat preparation

Leather gear knob, gaiter and hand-brake lever

Mondial cloth upholstery

Passenger airbag de-activation switch

Space saver spare wheel

Basic RRP	Total RRP inc. VAT
No charge	No charge

For all SE vehicles registered by 30 June 2007. Free upgrade to:

7.5J x 17 ‘16-spoke’ design alloy wheels

DVD Satellite Navigation system Plus for £500.00 total RRP inc. VAT, and 6-CD auto-changer for £290.00 total RRP inc. VAT (please refer to page 38 for full details)









S line trim



At Audi, we don't make cars that just look sporty; we make cars that literally raise the heart-rate, set the endorphins racing and take your breath away. Add an S line trim to your chosen model and you will enhance that experience even further. Featuring a range of muscular additions, including S line body styling, Sports seats and Sports suspension, the Audi A4 Saloon or Avant S line delivers a dynamic driving experience every time you get behind the wheel.

Includes

7J x 17 '5 parallel twin-spoke' design alloy wheels with 235/45 R17 Y tyres

3-spoke Sports multi-function part-perforated leather steering wheel

Aluminium window-trims framing the exterior side windows

Concert radio with single front-loading CD with MP3 file compatibility

Door mirrors – electrically operated and heated including heated washer jets

Electric rear windows

Inlays in aluminium, facette silver

ISOFIX child-seat preparation

Leather gear knob, gaiter and hand-brake lever

Passenger airbag de-activation switch

S line body styling in body colour, badged S line

Sports seats, front, including electric lumbar support

Sports suspension

Strato cloth upholstery

Space saver spare wheel

Basic RRP	Total RRP inc. VAT
£638.30	£750.00

For all S line vehicles registered by 30 June 2007:

Free upgrade to 8J x 18 '5-arm' design alloy wheels

DVD Satellite Navigation system Plus for £500.00 total RRP inc. VAT, and 6-CD auto-changer for £290.00 total RRP inc. VAT (please refer to page 38 for full details)

S line Special Edition

These dynamic, luxurious models feature a number of specification-enhancements over and above the standard S line trim. These include two-tone Volterra leather Sports seats, 18" alloy wheels and Driver's Information System – to name just a few.

Includes

3-spoke sports leather/Alcantara multi-function steering wheel with gear knob and hand brake handle in Alcantara with silver stitching

8J X 18 '7-arm double spoke' design alloy wheels with 235/40 R18 Y tyres and full size spare wheel

Black exhaust pipes (2.0T 220PS model only)

Black headlining

Black optic pack – radiator grille and exterior window trims in matt black (includes matt black roof rails on Avant and colour-coded boot lip on Saloon)

Concert radio with single front-loading CD with MP3 file compatibility

Door mirrors – electrically operated and heated including heated washer jets

Driver's Information System (DIS)

Electric rear windows

Inlays in brushed aluminium

ISOFIX child-seat preparation

Passenger airbag de-activation switch

S line body styling in body colour, badged S line

S line scuff plates

Sports seats, front, including electric lumbar support

S line suspension

Two-tone Graphite/Black Volterra leather

Ventilated cross-drilled front disc-brakes (2.0T 220PS model only)

For all S line Special Edition vehicles registered by 30 June 2007:

DVD Satellite Navigation system Plus for £500.00 total RRP inc. VAT, and 6-CD auto-changer for £290.00 total RRP inc. VAT (please refer to page 38 for full details)









One look at its muscular body styling, 18" alloy wheels and subtle V8 badging, and it'll come as no surprise that the Audi S4 features a powerful 4.2-litre V8 engine, capable of taking you from 0-62mph in under 6 seconds. And from the comfort and stability of a stylish leather Recaro Sports seat, you can sit back and enjoy every single unit of this engine's 344PS capability, safe in the knowledge that the quattro® permanent four-wheel-drive system will keep you exactly where you want to be – on the road.

But sleek styling and powerful performance in the S4 don't come at the expense of functional, driver-oriented specifications. Simple yet thoughtful touches, such as the interior storage pack, colour Driver's Information System and through-load facility have been included to ensure that your fast-paced lifestyle runs as smoothly as your Audi does.

Includes

3-spoke 'S' Sports part-perforated leather steering wheel	Door mirrors – electrically operated and heated including heated washer jets	'S' instrument dials
8J x 18 S design alloy wheels with 235/40 R18 Y tyres	Driver's Information System (DIS) in colour	S4 Sports suspension
4 visible chrome exhaust pipes	Electric rear windows	Scuff plates in aluminium with 'S' badge
Aluminium door-mirror housings	Headlight washer system	servotronic, speed-related power-assisted steering
Aluminium window-trims framing the exterior side windows	Inlays in Carbon Fibre	Split-folding rear seat
Body styling in body colour	Interior lighting package	Storage pack
Brake callipers painted black with S4 logo	Profile cloth/leather upholstery	Through-load facility
Concert radio with single front-loading CD with MP3 file compatibility	quattro permanent four-wheel-drive	V8 badge on front wing
	Recaro Sports seats with electric adjustment for height, forwards and backwards position, backrest angle and lumbar support	Xenon Plus headlights

Basic RRP	Recommended OTR
£36,590.00	£37,505.00

For all S4 quattro vehicles registered by 30 June 2007:

DVD Satellite Navigation system Plus for £500.00 total RRP inc. VAT, and 6-CD auto-changer for £290.00 total RRP inc. VAT (please refer to page 38 for full details)

quattro®

Permanent four-wheel-drive

Cars that deliver as much pulling power as the Audi A4 and S4 need a harness in place – a technology that delivers safety and control whilst enhancing the sporty characteristics which make them so thrilling to drive. That's why the latest generation of quattro® permanent four-wheel-drive is available on A4 models and standard on the S4. The principle is simple: in the same way that four brakes ensure better deceleration, four permanently-driven wheels deliver better acceleration and road-holding. On quattro® models, drive power is continuously distributed between the front and rear axles depending on weather conditions, road surface and gradient. And what better technology to feature on this sporty model than the one that has given Audi the edge on the racetrack ever since it was first introduced over 25 years ago.





Please note: All S line, S line Special Edition and S4 models have colourless indicator lenses in the headlamps, not orange as shown.

Engines

Petrol

There are two kinds available on this model – the standard petrol engine and the FSI® direct-injection engine. FSI® is a unique Audi technology originally developed for the Le Mans 24-hour endurance race to deliver increased power and torque as well as enhanced fuel efficiency. The way it does this is, in theory, very simple. Fuel is injected directly into the combustion chambers, ‘unthrottling’ the engine, reducing heat-loss and increasing output – all whilst reducing fuel consumption and exhaust emissions. Ideal for the buyer who wants a sporty, exhilarating drive without the drawbacks of excessive fuel costs or high emissions-based taxation.

Diesel

All diesel engines from Audi are known as TDI®. This impressive technology was originally pioneered by Audi in 1989, marking a departure from the noisy, fuel-thirsty diesel engines of the past. Like its FSI® petrol counterpart, the TDI® diesel engine is designed for power and performance, with low fuel consumption and CO2 emissions. The working principle of the TDI® engine is based upon precision and compression. A turbocharger supplies fresh air to the engine, ensuring optimum filling of the cylinder. Immediately after compression, an injector then delivers fuel into the combustion chambers at a very high pressure. The result – you get the most in terms of performance and economy from every drop of fuel that enters the tank.



Transmissions

Audi offers a variety of different transmission options to suit your requirements and driving style. In addition to the classic manual gearbox are two innovative automatic and semi-automatic transmission options. To help you come to an informed decision, each of these is described in detail opposite.

multitronic®

Translating a driver's preferences and intentions into road performance, the multitronic® transmission system entertains no compromises – whether in terms of dynamism, convenience or economy. multitronic® automatic transmission is available on models without quattro® permanent all-wheel-drive. A continuously variable transmission, multitronic® can transmit up to 310 Nm of torque and permits an exceptionally wide range of gear ratios. The result is smooth, powerful acceleration and a high level of driving comfort. And thanks to its lightweight design and a number of advanced electronic control systems that monitor gradient, road conditions and the way the driver is using the accelerator pedal, multitronic® also plays an instrumental role in reducing fuel consumption.

tiptronic

The 6-speed tiptronic transmission system is a form of automatic transmission available on Audi models with quattro® permanent four-wheel-drive. The technology converts high-torque engine power into both sporty performance and operating convenience, with crisp, fast gear changes, reduced weight and an optimised gearshift strategy. More spontaneous gear changes are a particular benefit, especially when down-shifting. Both in the 'D' (Drive) and 'S' (Sport) programme, the advanced electronics used in tiptronic respond efficiently to every driver input, helping to prevent unwanted upshifts when cornering.



Audi exclusive

In a car made from Vorsprung durch Technik, exclusivity comes as standard. In the Audi A4 and S4 it's present in everything, from the distinctive single-frame front grille to the stylish tail lights. But for that extra element of exclusivity, customise your Audi according to your

own unique taste with options from Audi exclusive. Whether you want Fine Nappa leather seats, dark-tinted privacy glass or even a customised steering wheel in your chosen model, Audi exclusive offers an impressive number of options to make it your own.



Upholstery

	Standard	SE	S line	S4	S line Special Edition	Basic RRP	Total RRP inc. VAT
exclusive leather equipment and trim in Fine Nappa leather. Front and rear seat upholstery, door trim inserts, front seat backrest covers, head restraints and front centre armrest (if ordered) from Audi exclusive range. Only available in combination with a leather steering wheel	• -	• -	- -	- -	- •	£2,382.98 £1,531.91	£2,800.00 £1,800.00
exclusive leather equipment and trim in Fine Nappa leather/Alcantara. Front and rear seat upholstery in leather with seat-centre section in Alcantara, and door trim inserts in Alcantara from Audi exclusive range. Only available in combination with a leather steering wheel, Sports seats and split-folding rear seat	• -	• -	• -	- -	- •	£2,382.98 £1,531.91	£2,800.00 £1,800.00
exclusive leather equipment and trim (package 1). Valcona leather. Front and rear seat upholstery, door trim inserts, front seat backrest covers, head restraints and front centre armrest (if ordered) from Audi exclusive range. Only available in combination with a leather steering wheel	• -	• -	• -	- -	- •	£2,680.85 £1,829.79	£3,150.00 £2,150.00
exclusive leather equipment and trim (package 1). Valcona leather with Recaro Sports seats. Front and rear seat upholstery, door trim inserts, front seat backrest covers, head restraints and front centre armrest (if ordered) from Audi exclusive range. Only available in combination with a leather steering wheel and electric front seats	• - -	• - -	• - -	- - •	- • -	£3,276.60 £2,425.53 £2,978.72	£3,850.00 £2,850.00 £3,500.00

Options are subject to availability and may extend delivery.
 - = Not available • = Available S = Standard

RRP – Recommended Retail Price.

Safety and security

	Standard	SE	S line	S4	S line Special Edition	Basic RRP	Total RRP inc. VAT
Seatbelts from Audi exclusive colour range	•	•	•	•	•	£936.17	£1,100.00

Steering wheels

Leather steering wheel rim from Audi exclusive colour range. Only in combination with a leather steering wheel	•	•	•	•	•	£297.87	£350.00
---	---	---	---	---	---	---------	---------

Interior

Wooden gear lever from Audi exclusive range, for manual models	•	•	•	•	•	£170.21	£200.00
Wooden gear lever from Audi exclusive range, for tiptronic/multitronic® models	•	•	•	•	•	£195.74	£230.00
Controls pack. Leather steering wheel rim, gear knob and handbrake grip from Audi exclusive range	•	•	•	•	•	£510.64	£600.00
Inlays. Fascia and door trim inlays from Audi exclusive range	•	•	•	•	•	£638.30	£750.00
Floor mats with leather piping from Audi exclusive range	•	•	•	•	•	£255.32	£300.00
Carpet. Includes floor mats with piping from Audi exclusive range	•	•	•	•	•	£723.40	£850.00
Cloth headlining, including colour-matched grab handles, available in Beige, Vanilla and Silver	-	-	-	•	-	£276.60	£325.00

Exterior

Black Styling pack. Radiator grille-frame in highly-polished black, with radiator grille and numberplate holder in matt black	•	•	•	•	S	£280.85	£330.00
--	---	---	---	---	---	---------	---------

Paint

exclusive paint from Audi exclusive range	•	•	•	•	•	£1,404.26	£1,650.00
--	---	---	---	---	---	-----------	-----------

The A4 and S4 Saloon and Avant prices



Prices

Saloon – Petrol

Engines	Power output	Transmission	ABI insurance group	Basic RRP	VAT	Total RRP inc. VAT	Recommended OTR
2.0	130PS	5-speed manual	12E	£16,251.06	£2,843.94	£19,095.00	£19,915.00
1.8T	163PS	5-speed manual	14E	£17,855.32	£3,124.68	£20,980.00	£21,800.00
1.8T quattro	163PS	6-speed manual	14E	£19,046.81	£3,333.19	£22,380.00	£23,200.00
2.0 TFSI	200PS	6-speed manual	15E	£19,046.81	£3,333.19	£22,380.00	£23,160.00
2.0 TFSI quattro	200PS	6-speed manual	15E	£20,238.30	£3,541.70	£23,780.00	£24,600.00
2.0 TFSI S line Special Edition	220PS	6-speed manual	17E	£20,225.53	£3,539.47	£23,765.00	£24,585.00
2.0 TFSI quattro S line Special Edition	220PS	6-speed manual	17E	£21,417.02	£3,747.98	£25,165.00	£25,985.00
3.2 FSI	256PS	7-speed multitronic®	17E	£23,140.43	£4,049.57	£27,190.00	£28,105.00
3.2 FSI quattro	256PS	6-speed manual	17E	£23,097.87	£4,042.13	£27,140.00	£28,055.00
S4 quattro	344PS	6-speed manual	20E	£31,140.43	£5,449.57	£36,590.00	£37,505.00

Please refer to page 27 for availability and prices of all A4 transmissions

Saloon – Diesel

Engines	Power output	Transmission	ABI insurance group	Basic RRP	VAT	Total RRP inc. VAT	Recommended OTR
1.9 TDI	115PS	5-speed manual	11E	£17,600.00	£3,080.00	£20,680.00	£21,435.00
2.0 TDI	140PS	6-speed manual	12E	£18,702.13	£3,272.87	£21,975.00	£22,730.00
2.0 TDI	170PS	6-speed manual	15E	£19,497.87	£3,412.13	£22,910.00	£23,665.00
2.0 TDI quattro	170PS	6-speed manual	15E	£20,689.36	£3,620.64	£24,310.00	£25,090.00
2.0 TDI S line Special Edition	170PS	6-speed manual	15E	£21,455.32	£3,754.68	£25,210.00	£25,965.00
2.0 TDI quattro S line Special Edition	170PS	6-speed manual	15E	£22,646.81	£3,963.19	£26,610.00	£27,390.00
2.7 TDI	180PS	6-speed manual	15E	£21,268.09	£3,721.91	£24,990.00	£25,770.00
3.0 TDI quattro	233PS	6-speed manual	15E	£23,272.34	£4,072.66	£27,345.00	£28,165.00

Recommended 'On-The-Road' (OTR) retail prices include: delivery charge, half a tank of fuel, numberplates at £577.00 (inc. VAT), Road Fund Licence (which may vary depending on model, see page 54 for details) and first registration fee at £38.00.

For OTR price calculations, the maximum possible Road Fund Licence value has been used (see page 52 for details).
RRP – Recommended Retail Price.



Avant – Petrol

Engines	Power output	Transmission	ABI insurance group	Basic RRP	VAT	Total RRP inc. VAT	Recommended OTR
2.0	130PS	5-speed manual	12E	£17,229.79	£3,015.21	£20,245.00	£21,065.00
1.8T	163PS	5-speed manual	14E	£18,834.04	£3,295.96	£22,130.00	£22,950.00
1.8T quattro	163PS	6-speed manual	14E	£20,025.53	£3,504.47	£23,530.00	£24,350.00
2.0 TFSI	200PS	6-speed manual	15E	£20,025.53	£3,504.47	£23,530.00	£24,350.00
2.0 TFSI quattro	200PS	6-speed manual	15E	£21,217.02	£3,712.98	£24,930.00	£25,750.00
2.0 TFSI S line Special Edition	220PS	6-speed manual	17E	£21,204.26	£3,710.74	£24,915.00	£25,735.00
2.0 TFSI quattro S line Special Edition	220PS	6-speed manual	17E	£22,395.74	£3,919.26	£26,315.00	£27,230.00
3.2 FSI	256PS	7-speed multitronic®	17E	£24,119.15	£4,220.85	£28,340.00	£29,255.00
3.2 FSI quattro	256PS	6-speed manual	17E	£24,076.60	£4,213.40	£28,290.00	£29,205.00
S4 quattro	344PS	6-speed manual	20E	£32,119.15	£5,620.85	£37,740.00	£38,655.00

Please note: The maximum power output figures are quoted in PS (or Pferdestärke, which is the metric equivalent of brake horsepower). To convert to horsepower, divide the PS figure by 1.0139.

Avant – Diesel

Engines	Power output	Transmission	ABI insurance group	Basic RRP	VAT	Total RRP inc. VAT	Recommended OTR
1.9 TDI	115PS	5-speed manual	11E	£18,578.72	£3,251.28	£21,830.00	£22,585.00
2.0 TDI	140PS	6-speed manual	12E	£19,680.85	£3,441.15	£23,125.00	£23,880.00
2.0 TDI	170PS	6-speed manual	15E	£20,476.60	£3,583.40	£24,060.00	£24,815.00
2.0 TDI quattro	170PS	6-speed manual	15E	£21,668.09	£3,791.91	£25,460.00	£26,240.00
2.0 TDI S line Special Edition	170PS	6-speed manual	15E	£22,434.04	£3,925.96	£26,360.00	£27,115.00
2.0 TDI quattro S line Special Edition	170PS	6-speed manual	15E	£23,625.53	£4,134.47	£27,760.00	£28,540.00
2.7 TDI	180PS	6-speed manual	15E	£22,246.81	£3,893.19	£26,140.00	£26,920.00
3.0 TDI quattro	233PS	6-speed manual	15E	£24,251.06	£4,243.94	£28,495.00	£29,315.00

Recommended 'On-The-Road' (OTR) retail prices include: delivery charge, half a tank of fuel, numberplates at £577.00 (inc. VAT), Road Fund Licence (which may vary depending on model, see page 54 for details) and first registration fee at £38.00.

For OTR price calculations, the maximum possible Road Fund Licence value has been used (see page 52 for details).

RRP – Recommended Retail Price.

Technical data

Saloon – Petrol

Engine	CO ₂ emissions g/km	Cylinder	Transmission	Fuel consumption*			Acceleration, seconds, 0-62 mph	Top speed, mph
				Urban	Extra Urban	Combined		
2.0	193	4-cylinder	5-speed manual	24.4 (11.6)	46.3 (6.1)	34.2 (8.2)	9.9	131
	191		7-speed multitronic®	25.7 (11.0)	44.8 (6.3)	35.3 (8.0)	10.2	127
1.8T	197	4-cylinder	5-speed manual	25.0 (11.3)	44.1 (6.4)	34.4 (8.2)	8.6	141
	199		7-speed multitronic®	24.8 (11.4)	43.5 (6.5)	34.0 (8.3)	8.6	138
1.8T quattro	221	4-cylinder	6-speed manual	22.1 (12.8)	39.8 (7.1)	30.7 (9.2)	8.7	140
2.0 TFSI	184	4-cylinder	6-speed manual	25.9 (10.9)	48.7 (5.8)	36.7 (7.7)	7.3	149
	194		7-speed multitronic®	25.2 (11.2)	44.8 (6.3)	34.9 (8.1)	7.3	146
2.0 TFSI quattro	209	4-cylinder	6-speed manual	22.4 (12.6)	42.8 (6.6)	32.1 (8.8)	7.2	147
	224		6-speed tiptronic	21.6 (13.1)	39.2 (7.2)	30.1 (9.4)	7.7	146
2.0 TFSI S line Special Edition	192	4-cylinder	6-speed manual	25.2 (11.2)	45.6 (6.2)	35.3 (8.0)	7.1	154
2.0 TFSI quattro S line Special Edition	214	4-cylinder	6-speed manual	22.2 (12.7)	40.9 (6.9)	31.4 (9.0)	6.9	152
3.2 FSI	227	V6	7-speed multitronic®	20.5 (13.8)	40.9 (6.9)	29.7 (9.5)	6.8	155**
3.2 FSI quattro	250	V6	6-speed manual	18.0 (15.7)	37.7 (7.5)	26.9 (10.6)	6.4	155**
	257		6-speed tiptronic	18.1 (15.6)	35.8 (7.9)	26.4 (10.7)	6.9	155**
S4 quattro	322	V8	6-speed manual	14.5 (19.5)	28.8 (9.8)	21.2 (13.3)	5.6	155**
	295		6-speed tiptronic	15.8 (17.9)	31.0 (9.1)	23.0 (12.3)	5.8	155**

*Fuel consumption according to 1999/100/EU in mpg (l/100km). Please see page 52 for details.

**Electronically limited.

Saloon – Diesel

Engine	CO2 emissions g/km	Cylinder	Transmission	Fuel consumption*			Acceleration, seconds, 0-62 mph	Top speed, mph
				Urban	Extra Urban	Combined		
1.9 TDI ²	152	4-cylinder	5-speed manual	36.2 (7.8)	62.8 (4.5)	49.6 (5.7)	11.2	124
2.0 TDI ² 140PS	159	4-cylinder	6-speed manual	36.2 (7.8)	62.8 (4.5)	49.6 (5.7)	9.7	131
			7-speed multitronic®	34.4 (8.2)	55.4 (5.1)	45.6 (6.2)	9.8	128
2.0 TDI ¹ 170PS	154	4-cylinder	6-speed manual	35.8 (7.9)	61.4 (4.6)	48.7 (5.8)	8.6	141
2.0 TDI quattro ¹ 170PS	177	4-cylinder	6-speed manual	30.7 (9.2)	53.3 (5.3)	42.2 (6.7)	8.5	139
2.7 TDI ¹	179	V6	6-speed manual	29.7 (9.5)	55.4 (5.1)	42.2 (6.7)	8.4	143
			7-speed multitronic®	30.7 (9.2)	52.3 (5.4)	41.5 (6.8)	8.4	139
3.0 TDI quattro	204	V6	6-speed manual	26.4 (10.7)	49.6 (5.7)	37.7 (7.5)	6.8	153
			6-speed tiptronic	24.4 (11.0)	45.6 (6.2)	34.4 (8.2)	7.5	152



¹ Fitted with a Diesel Particulate Filter (DPF)

² With preparation for DPF retro fitment

*Fuel consumption according to 1999/100/EU in mpg (l/100km). Please see page 52 for details.

Technical data

Avant – Petrol

Engine	CO ₂ emissions g/km	Cylinder	Transmission	Fuel consumption*			Acceleration, seconds, 0-62 mph	Top speed, mph
				Urban	Extra Urban	Combined		
2.0	193	4-cylinder	5-speed manual	24.4 (11.6)	46.3 (6.1)	34.4 (8.2)	10.1	129
	194		7-speed multitronic®	25.2 (11.2)	44.8 (6.3)	34.9 (8.1)	10.4	125
1.8T	199	4-cylinder	5-speed manual	24.8 (11.4)	43.5 (6.5)	34.0 (8.3)	8.8	139
	202		7-speed multitronic®	24.6 (11.5)	42.8 (6.6)	33.6 (8.4)	8.9	136
1.8T quattro	221	4-cylinder	6-speed manual	22.1 (12.8)	39.7 (7.1)	30.7 (9.2)	8.9	138
2.0 TFSI	186	4-cylinder	6-speed manual	25.7 (11.0)	47.9 (5.9)	36.2 (7.8)	7.6	146
	194		7-speed multitronic®	25.2 (11.2)	44.8 (6.3)	34.9 (8.1)	7.6	142
2.0 TFSI quattro	209	4-cylinder	6-speed manual	22.4 (12.6)	42.8 (6.6)	31.1 (8.8)	7.5	144
	226		6-speed tiptronic	21.1 (13.4)	38.7 (7.3)	29.7 (9.5)	8.0	142
2.0 TFSI S line Special Edition	186	4-cylinder	6-speed manual	25.7 (11.0)	47.9 (5.9)	36.2 (7.8)	7.4	150
2.0 TFSI quattro S line Special Edition	226	4-cylinder	6-speed manual	21.1 (13.4)	38.7 (7.3)	29.7 (9.5)	7.1	148
3.2 FSI	229	V6	7-speed multitronic®	20.3 (13.9)	40.4 (7.0)	29.4 (9.6)	7.0	152
3.2 FSI quattro	252	V6	6-speed manual	17.9 (15.8)	37.2 (7.6)	26.6 (10.6)	6.6	155**
	257		6-speed tiptronic	18.1 (15.6)	35.8 (7.9)	26.4 (10.7)	7.1	153
S4 quattro	322	V8	6-speed manual	14.4 (19.6)	28.8 (9.8)	21.1 (13.4)	5.8	155**
	295		6-speed tiptronic	15.8 (17.9)	31.0 (9.1)	23.0 (12.3)	5.9	155**

*Fuel consumption according to 1999/100/EU in mpg (l/100km). Please see page 52 for details.

**Electronically limited.

Avant – Diesel

Engine	CO2 emissions g/km	Cylinder	Transmission	Fuel consumption*			Acceleration, seconds, 0-62 mph	Top speed, mph
				Urban	Extra Urban	Combined		
1.9 TDI ²	154	4-cylinder	5-speed manual	25.8 (7.9)	61.4 (4.6)	48.7 (5.8)	11.5	122
2.0 TDI ² 140PS	162	4-cylinder	6-speed manual	25.8 (7.9)	61.4 (4.6)	48.7 (5.8)	9.9	128
	167		7-speed multitronic [®]	35.3 (8.0)	54.3 (5.2)	45.6 (6.2)	10.2	124
2.0 TDI ¹ 170PS	154	4-cylinder	6-speed manual	35.8 (7.9)	61.4 (4.6)	48.7 (5.8)	8.6	138
2.0 TDI quattro ¹ 170PS	179	4-cylinder	6-speed manual	30.4 (9.3)	52.3 (5.4)	51.5 (6.8)	8.5	134
2.7 TDI ¹	182	V6	6-speed manual	29.7 (9.5)	54.3 (5.1)	41.5 (6.8)	8.6	139
	179		7-speed multitronic [®]	30.7 (9.2)	52.3 (5.4)	41.5 (6.8)	8.6	135
3.0 TDI quattro	198	V6	6-speed manual	26.4 (10.7)	49.6 (5.7)	37.7 (7.5)	7.0	149
	219		6-speed tiptronic	23.9 (11.8)	44.8 (6.3)	34.0 (8.3)	7.5	

Transmission

	2.0	1.8T	1.8T quattro	2.0 TFSI	2.0 TFSI quattro	3.2 FSI	3.2 FSI quattro	1.9 TDI	2.0 TDI 140PS	2.0 TDI 170PS	2.7 TDI	3.0 TDI quattro	S4 quattro	S line Special Edition	Basic RRP	Total RRP inc. VAT
Automatic 7-speed multitronic[®] transmission	•	•	-	•	-	S	-	-	•	-	•	-	-	-	£1,234.04	£1,450.00
Automatic 6-speed tiptronic transmission	-	-	-	-	•	-	•	-	-	-	-	•	•	-	£1,191.49	£1,400.00

Options are subject to availability and may extend delivery.
 - = Not available • = Available S = Standard

*Fuel consumption according to 1999/100/EU in mpg (1/100km). Please see page 52 for details.
 RRP – Recommended Retail Price.

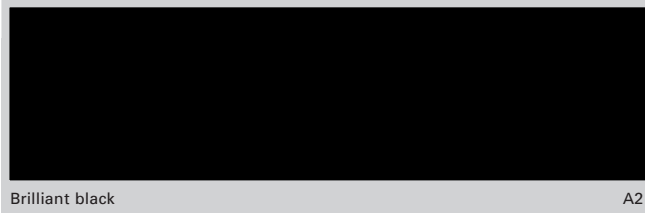
¹ Fitted with a Diesel Particulate Filter (DPF)

² With preparation for DPF retro fitment

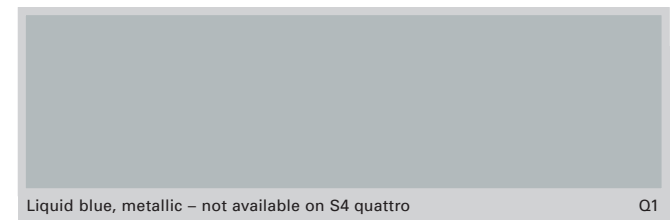
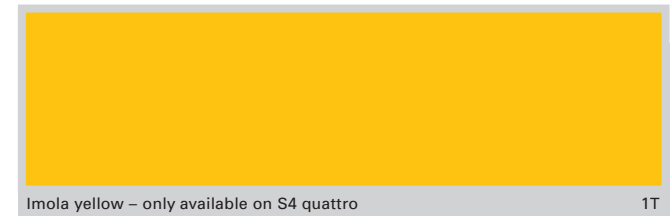
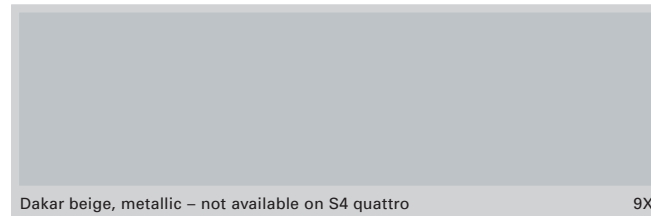
Paint finishes

Standard colours

Optional colours



Basic RRP	Total RRP inc. VAT
£468.09	£550.00

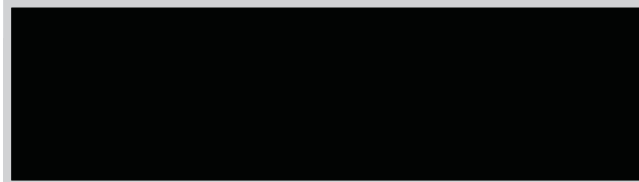


S line Special Edition additional colours



Silver, metallic

5B



Phantom black, pearl effect

L8



Avus silver, pearl effect

C2

Also available on other models at Audi exclusive paint price.



Mauritius blue, pearl effect – not available on S4 quattro

2Y



Quartz grey, metallic – not available on S4 quattro

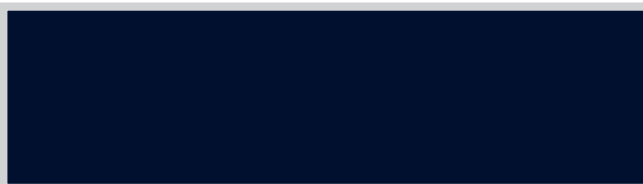
Q4



Misano red, pearl effect

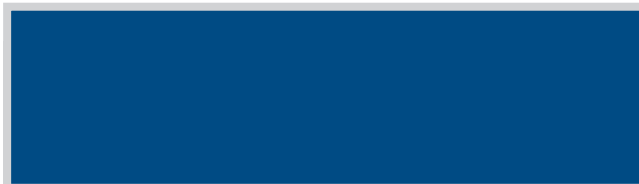
N9

Also available on other models at Audi exclusive paint price.



Deep Sea blue, pearl effect

8A



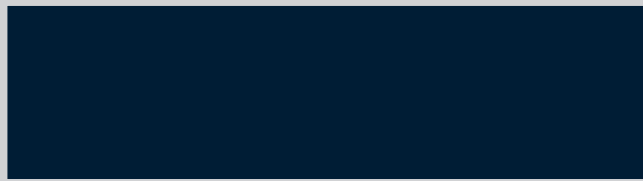
Sprint blue, pearl effect – only available on S4 quattro

5N

Audi exclusive

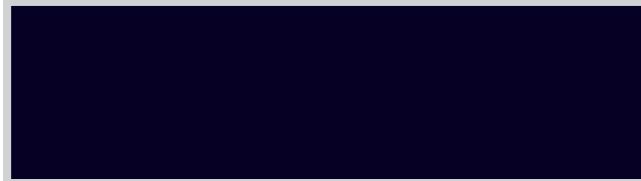
Any colour from the range. If you require an Audi paint colour that is not part of the A4 colour range, this can be achieved through Audi exclusive. Please ask your Audi Centre for full details.

Basic RRP	Total RRP inc. VAT
£1,404.26	£1,650.00



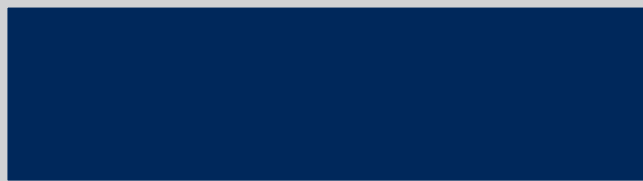
Deep Sea green, pearl effect

G7



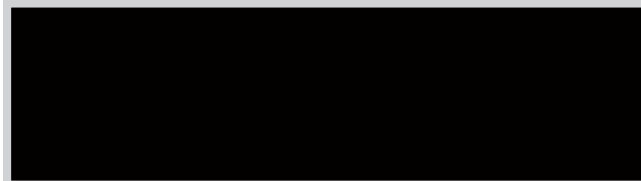
Venetian purple, pearl effect

4H



Elderberry, pearl effect

7L



Black cherry, pearl effect

8C



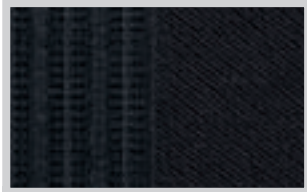
Upholstery

Cloth and leather trim

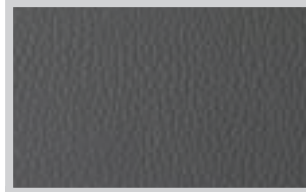
Standard seats



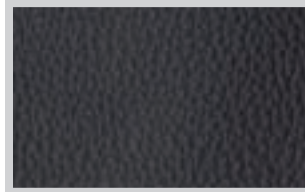
Mikado cloth, black NK



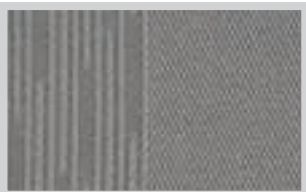
Mondial cloth, black NK



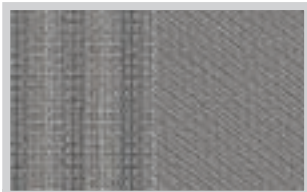
Volterra leather, black NK



Valcona leather, black NW/NX



Mikado cloth, light grey NQ



Mondial cloth, light grey NQ



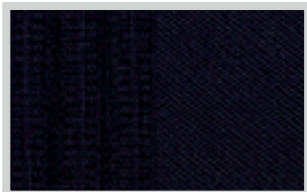
Volterra leather, light grey NQ



Valcona leather, beige NR



Mikado cloth, Deep blue MF



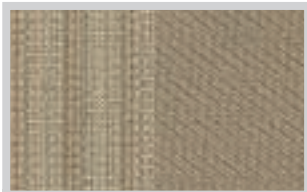
Mondial cloth, Deep blue MF



Volterra leather, Deep blue MF



Valcona leather, vanilla NK

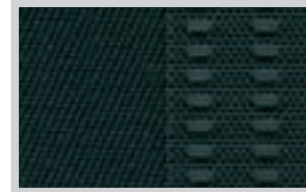


Mondial cloth, beige NR

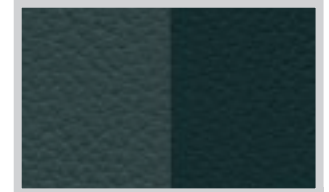


Volterra leather, beige NR

Sports seats



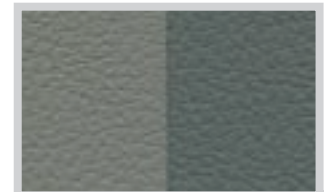
Strato cloth, black NK



Volterra leather, graphite/black NY



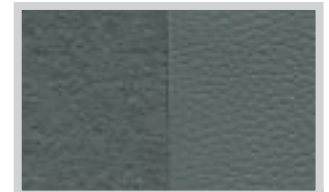
Strato cloth, light grey NQ



Volterra leather, pale grey/light grey NZ

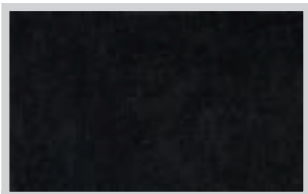


Alcantara/leather, black NK

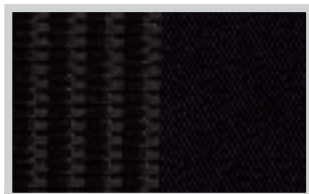


Alcantara/leather, light grey NQ

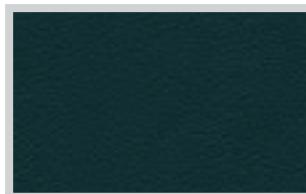
S4 Recaro Sports seats



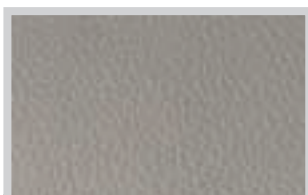
Valcona leather, black NK



Profile cloth/leather, black ZM



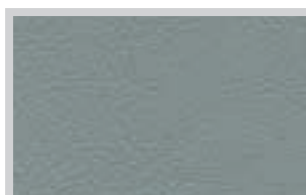
Silk Nappa, black ZM



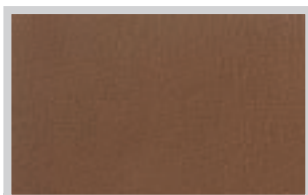
Valcona leather, light grey NQ



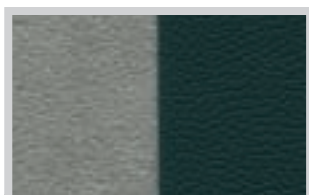
Alcantara/leather, black ZM



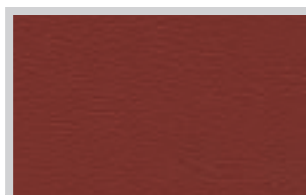
Silk Nappa, silver ZV



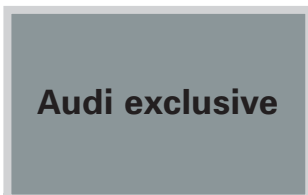
Valcona leather, Amaretto brown NM



Alcantara/leather, silver/black ZR



Silk Nappa, Crimson red ZU

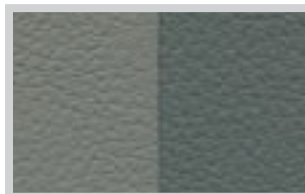


Audi exclusive leather trim from quattro GmbH

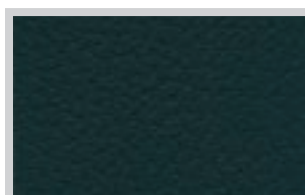


Alcantara/leather, silver ZV

S line Special Edition Sports seats



Volterra leather, graphite/black QP

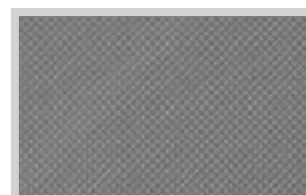


Valcona leather, black QE

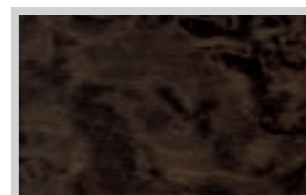
Inlays



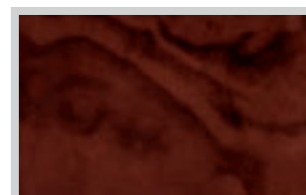
Brushed Aluminium grey 5MU



Facette Aluminium silver 5TE



Birch wood, grey 5TZ



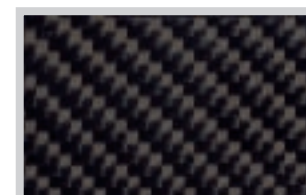
Walnut brown 5MG



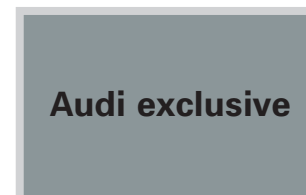
Birch wood, beige 7TC



Piano Finish, black 5TL



Carbon Fibre - S4 only 5MK



Audi exclusive Inlays from quattro GmbH

Additional upholstery options

	Standard	SE	S line	S4 quattro	S line Special Edition	Basic RRP	Total RRP inc. VAT
Alcantara/leather combination. Head restraints, seat-side facings and front centre armrest (if fitted) in leather. Seat centres and door inserts in Alcantara. On Avant models only, must be combined with Sports seats and a leather steering wheel. On Saloon models only, must be combined with Sports seats, split-folding rear seat and a leather steering wheel (this price does not include these items)	• -	• -	• -	- •	- -	£851.06 £442.55	£1,000.00 £520.00
Silk Nappa leather for seats, head restraints, door inserts and front centre armrest (if fitted)	-	-	-	•	-	£808.51	£950.00
Volterra leather for seats, head restraints, door inserts and front centre armrest (if fitted). Only in combination with a leather steering wheel	•	•	•	-	S	£1,063.83	£1,250.00
Valcona leather for seats, head restraints, door inserts and front centre armrest (if fitted). Only in combination with a leather steering wheel	• -	• -	• -	- -	- •	£1,404.26 £340.43	£1,650.00 £400.00
Mondial cloth for seats, head restraints, door inserts and front centre armrest (if fitted)	•	S	-	-	-	£106.38	£125.00







Packages

Luxury pack • Volterra leather upholstery • Heated front seats • Acoustic parking – front and rear	•	•	•	-	-	£1,442.55	£1,695.00
Visibility pack • Xenon Plus headlights • Adaptive lights	•	•	•	-	•	£723.40	£850.00
Executive pack – SE models • GSM mobile telephone preparation on dashboard or in front centre armrest • Auto-dimming rear view mirror • Front centre armrest • 4-spoke multi-function leather steering wheel	-	•	-	-	-	£634.04	£745.00
Executive pack – S line models • GSM mobile telephone preparation on dashboard or in front centre armrest • Auto-dimming rear view mirror • Front centre armrest • Driver's Information System (standard on S line Special Edition)	- -	- -	• -	- -	- •	£659.57 £506.38	£775.00 £595.00

Packages

	Standard	SE	S line	S4 quattro	S line Special Edition	Basic RRP	Total RRP inc. VAT
A4 exclusive line							
• Two-tone Valcona leather, black seat-side sections with coloured seat-centre section in Crimson red, silver or Cognac brown	-	•	•	-	-	£2,212.77	£2,600.00
• Black dashboard and carpets	-	-	-	-	•	£1,234.04	£1,450.00
• Black cloth headlining							
• Door-trim inserts in black to match interior trim							
• Audi exclusive door sill trims							
• Brushed Aluminium grey inlays							
• Floor mats in black with coloured piping (to match seat-centre section)							
• 3-spoke leather steering wheel							
• Steering wheel rim, gear knob and gear lever gaiter with coloured stitching (to match seat-centre section)							
Comfort pack							
• Electric front seats with memory function on driver's side	•	•	•	-	•	£1,361.70	£1,600.00
• Auto-dimming rear view mirror	-	-	-	•	-	£680.85	£800.00
• Door mirrors – electrically operated and heated, electrically folding, auto-dimming and with memory function							
Interior light pack							
• Entry/exit door lights	•	•	•	S	•	£131.91	£155.00
• Make-up mirrors							
• Background lighting for centre console							
Load-area pack (Avant models)							
• Combination luggage net	•	•	•	•	•	£72.34	£85.00
• Load securing strap							
• Additional net hooks							
Load-area pack (Saloon models)							
• 12V power socket	•	•	•	•	•	£63.83	£75.00
• Anchor hooks and combination luggage net							
• Cargo net on right hand side							
Storage pack							
• Front under-seat storage trays, front-seat map pockets	•	•	•	S	•	£72.34	£85.00
• Rear cup-holders (x2) in rear seat armrest							
• Lockable glove-compartment							

Wheels, tyres and suspension

	Standard	SE	S line	S4 quattro	S line Special Edition	Basic RRP	Total RRP inc. VAT
 <p>7J x 16 '15-spoke' design alloy wheels with 205/55 R16 W tyres. 2.0 TFSI and 6-cylinder models have 215/55 R16 Y tyres</p>	• -	- •	- -	- -	- -	£425.53 £42.55	£500.00 £50.00
 <p>7.5J x 16 '7-arm dynamic' design lightweight forged alloy wheels with 215/55 R16 Y tyres</p>	• -	- •	- -	- -	- -	£510.64 £127.66	£600.00 £150.00
 <p>7.5J x 17 '16-spoke' design alloy wheels with 235/45 R17 Y tyres</p>	• -	- •	- •	- -	- -	£808.51 No charge	£950.00
 <p>7.5J x 17 '5 parallel twin-spoke' design alloy wheels with 235/45 R17 Y tyres</p>	• -	- •	S -	- -	- -	£851.06 £468.09	£1,000.00 £550.00
 <p>7.5J x 17 '5-spoke Star' design alloy wheels with 235/45 R17 Y tyres</p>	• - -	- • -	- - •	- - -	- - -	£936.17 £553.19 £85.11	£1,100.00 £650.00 £100.00
 <p>7.5J x 17 '9-spoke Star' design alloy wheels with 235/45 R17 Y tyres</p>	• - -	- • -	- - •	- - -	- - -	£936.17 £553.19 £85.11	£1,100.00 £650.00 £100.00

Wheels, tyres and suspension

	Standard	SE	S line	S4 quattro	S line Special Edition	Basic RRP	Total RRP inc. VAT
 <p>7.5J x 17 '9-spoke' design alloy wheels with 235/45 R17 Y tyres</p>	•	-	-	-	-	£1,063.83	£1,250.00
	-	•	-	-	-	£680.85	£800.00
	-	-	•	-	-	£297.87	£350.00
 <p>8J x 18 '9-spoke' design alloy wheels with 235/40 R18 Y tyres and space-saver spare wheel</p>	•	-	-	-	-	£1,617.02	£1,900.00
	-	•	-	-	-	£1,234.04	£1,450.00
	-	-	•	-	-	£765.96	£900.00
	-	-	-	•	-	£595.74	£700.00
 <p>8J x 18 '5-arm' design alloy wheels with 235/40 R18 Y tyres and space-saver spare wheel</p>	•	-	-	-	-	£1,702.13	£2,000.00
	-	•	-	-	-	£1,319.15	£1,550.00
	-	-	•	-	-	No charge	
	-	-	-	•	-	£680.85	£800.00
Space-saver spare wheel	•	•	•	-	S	No charge	
Sports suspension , lowered by 20mm	•	•	S	-	-	£212.77	£250.00
Tyre-pressure monitor , monitors set pressure of tyres during journey. Only in combination with DIS. Not available with 7J x 16 '5-arm Trapez' design alloy wheels	•	•*	•	•	•	£212.77	£250.00

Audio and communication

	Standard	SE	S line	S4 quattro	S line Special Edition	Basic RRP	Total RRP inc. VAT
Audi Concert radio with single front-loading CD and MP3 file compatibility	•	S	S	S	S	£170.21	£200.00
Audi Symphony radio with integrated front-loading 6-CD changer and MP3 file compatibility	• -	- •	- •	- •	- •	£395.74 £225.53	£465.00 £265.00
BOSE Sound system. High-performance loudspeakers with specially tuned acoustics	•	•	•	•	•	£408.51	£480.00
6-CD auto-changer located in the glove compartment (cannot be combined with iPod connection) - in combination with DVD Satellite Navigation system Plus	• -	• •	• •	• •	• •	£272.34 £246.80	£320.00 £290.00
GSM mobile telephone preparation on dashboard with hands-free function, Bluetooth interface, roof aerial for optimal reception (Avant only) and charger. Can be operated via a multi-function steering wheel if ordered. A phone adapter is required at extra cost. Please see your Audi Centre for phone compatibility and full details. Multi-function steering wheel and DIS is strongly recommended with this option	•	•	•	•	•	£340.43	£400.00
GSM mobile telephone preparation in front centre armrest with hands-free function, Bluetooth interface, roof aerial for optimal reception (Avant only) and charger. A phone adapter is required at extra cost. Please see your Audi Centre for phone compatibility and full details. Must be combined with multi-function steering wheel and DIS. A phone cradle is required.	•	•	•	•	•	£459.57	£540.00
Generation 2 mobile-phone cradles (applicable for factory-fitted GSM mobile-telephone preparation only)	•	•	•	•	•	£85.11	£100.00
CD-ROM based Satellite Navigation system , route planning and guidance using voice and pictogram instructions. Includes Driver's Information System (DIS) in colour, RDS radio, CD Player, MMI operating logic and UK CD-ROM disc (6-CD auto-changer is recommended with this option). Located in dashboard in lieu of Chorus/Concert radio	•	•	•	•	•	£1,191.49	£1,400.00
DVD-based Satellite Navigation system Plus. DVD-based route planning and guidance with MMI control logic and 6.5-inch colour monitor, 3D map display, RDS radio, DVD player for Navigation system, audio or MP3 CDs (cannot be used at same time as Navigation system), two integrated MMC/SD card slots for MP3. Includes colour Driver's Information System and European coverage disc. Located in dashboard in lieu of Chorus/Concert radio (6-CD auto-changer is recommended with this option)	• -	- •	- •	- •	- •	£1,851.06 £425.53	£2,175.00 £500.00
iPod connection , for playing/charging your iPod in your A4, located in glovebox and controlled via radio or multi-function steering wheel (if fitted). Cannot be combined with CD changer	•	•	•	•	•	£148.94	£175.00
TV reception. Only in combination with DVD Satellite Navigation system Plus (analogue only)	•	•	•	•	•	£600.00	£705.00
Voice-control system for most important basic functions of DVD Navigation system, radio system, CD-changer and GSM phone system (where fitted). Only in combination with DVD Navigation system	•	•	•	•	•	£276.60	£325.00

Seats

	Standard	SE	S line	S4 quattro	S line Special Edition	Basic RRP	Total RRP inc. VAT
Electric front seats with adjustment for height, forwards and backwards position, backrest angle and lumbar support	•	•	-	S	-	£680.85	£800.00
	-	-	•	S	•	£510.64	£600.00
Electric lumbar support for front seats, with horizontal and vertical adjustment	•	•	S	S	S	£170.21	£200.00
Heated front seats , individually controlled with variable temperature adjustment	•	•	•	•	•	£212.77	£250.00
Heated front and outer rear seats , individually controlled with variable temperature adjustment	•	•	•	•	•	£382.98	£450.00
Split-folding rear seat (standard on Avant models)	•	•	•	S	•	£212.77	£250.00
Sports seats , front, including electric lumbar support	•	•	S	-	S	£382.98	£450.00
Through-load facility (ski bag) for transporting long objects of up to 210cm in length	•	•	•	S	•	£127.66	£150.00

Safety and security

	Standard	SE	S line	S4 quattro	S line Special Edition	Basic RRP	Total RRP inc. VAT
Acoustic parking system – rear	•	•	•	•	•	£297.87	£350.00
Acoustic parking system – front and rear	•	•	•	•	•	£425.53	£500.00
Adaptive lights. Swivelling headlights for improved illumination of a winding road. Only in combination with Xenon Plus headlights	•	•	•	•	•	£276.60	£325.00
Auto-dimming rear view mirror, with light and rain sensors	•	•	•	-	•	£170.21	£200.00
Auto-dimming rear view mirror. As above, plus coming-home function. Only in combination with Xenon Plus headlights	•	•	•	•	•	£170.21	£200.00
Door mirrors – electrically operated and heated, including heated washer jets	•	S	S	S	S	£85.11	£100.00
Door mirrors – electrically folding, including the above functions	•	-	-	-	-	£187.23	£220.00
Door mirrors – auto-dimming, including the above functions. Only in combination with auto-dimming rear view mirror	-	•	•	•	•	£204.26	£240.00
Headlight washer system (standard with Xenon Plus headlights)	•	•	•	S	•	£212.77	£250.00
Garage door opener (Homelink®)**. Only in combination with interior lighting package	•	•	•	•	•	£144.68	£170.00
ISOFIX child-seat preparation for front passenger's seat and outer rear seats, including passenger airbag de-activation switch	•	S	S	•	S	£59.57	£70.00
Privacy glass. Dark-tinted glass from B-pillar backwards (available on Avant models only)	•	•	•	•	•	£276.60	£325.00
Rear side-airbags	•	•	•	•	•	£255.32	£300.00
Xenon Plus headlights for dipped and main beam, including daytime-driving lights, headlight washer system and automatic range adjustment	•	•	•	S	•	£659.57	£775.00

Steering wheels

	Standard	SE	S line	S4 quattro	S line Special Edition	Basic RRP	Total RRP inc. VAT
4-spoke leather steering wheel	•	S	-	-	-	£136.17	£160.00
4-spoke multi-function leather steering wheel	•	-	-	-	-	£289.36	£340.00
	-	•	-	-	-	£153.19	£180.00
4-spoke multi-function leather steering wheel with paddle-shift gear-change tiptronic or multitronic® models only	•	-	-	-	-	£357.45	£420.00
	-	•	-	-	-	£221.28	£260.00
3-spoke Sports part-perforated leather steering wheel with paddle-shift gear-change tiptronic or multitronic® models only	-	-	•	-	-	£68.09	£80.00
3-spoke 'S' Sports part-perforated multi-function leather steering wheel tiptronic models include paddle-shift gear-change	-	-	-	•	-	£153.19	£180.00
servotronic steering. Speed-related power-assisted steering (standard on 2.0 TFSI and 6-cylinder models). Not available on 1.9 TDI models	•	•	•	S	S / • *	£153.19	£180.00





Please note: All S line, S line Special Edition and S4 models have colourless indicator lenses in the headlamps, not orange as shown.

Interior equipment

	Standard	SE	S line	S4 quattro	S line Special Edition	Basic RRP	Total RRP inc. VAT
Automatic air re-circulation with active charcoal filter	•	•	•	•	•	£110.64	£130.00
Black headlining. Only in combination with black, graphite/black and Amaretto brown interior trim colours	•	•	•	-	S	£170.21	£200.00
Blind (Avant only), manual for side windows	•	•	•	•	•	£76.60	£90.00
Blind (Saloon only), electric for rear window, manual for side windows. Only in combination with split-folding rear seat	•	•	•	•	•	£276.60	£325.00
Cool box in glove compartment. Keeps items cool during the journey using air-conditioning system	•	•	•	•	•	£46.81	£55.00
Cruise control for holding any speed above 25 mph	•	S	•	•	•	£204.26	£240.00
Driver's Information System (DIS) with display for: AutoCheck system, audio, on-board computer, gear selected (tiptronic models only), doors, service interval and to indicate when the boot lid has been left open	•	S	•	-	S	£200.00	£235.00
Driver's Information System (DIS) in colour, as above with high-resolution colour display	•	-	•	S	-	£285.11	£335.00
	-	•	-	-	•	£85.11	£100.00
Electric rear windows	•	S	S	S	S	£255.32	£300.00
Front centre armrest with storage compartment and angle adjustment	•	•	•	•	•	£119.15	£140.00
Inlays in Brushed Aluminium grey	-	-	-	•	S	No charge	
Inlays in Facette Aluminium silver	•	S	S	-	-	£85.11	£100.00
Inlays in Piano Finish black	-	-	-	•	•	No charge	
Inlays in Walnut brown	•	•	•	-	-	£297.87	£350.00
Inlays in Birch wood, beige	•	•	•	-	-	£297.87	£350.00
Inlays in Birch wood, grey	•	•	•	NC	-	£297.87	£350.00
	-	-	-	-	•	£212.77	£250.00
Gear Knob in Wood with matching inlays. Only in combination with wooden inlays (not Birch wood, beige)	•	•	•	-	•	£72.34	£85.00
Reversible mat for luggage compartment (Avant only), one side in rubber, the other side in velour	•	•	•	•	•	£63.83	£75.00

Exterior equipment

	Standard	SE	S line	S4 quattro	S line Special Edition	Basic RRP	Total RRP inc. VAT
Aluminium window-trims , framing the exterior side windows	•	S	S	S	S	£127.66	£150.00
Automatically opening boot lid. When the luggage compartment is unlocked, the lid automatically opens to make loading easier (Saloon only)	•	•	•	•	•	£25.53	£30.00
Black roof rails (Avant only)	•	•	•	•	S	No charge	
Electric slide-and-tilt glass sunroof	•	•	•	•	•	£723.40	£850.00
Electric slide-and-tilt solar sunroof. Uses the sun's energy to supply a constant flow of air, reducing the temperature inside the vehicle when parked	•	•	•	•	•	£1,000.00	£1,175.00
No rear model inscription	•	•	•	-	•	No charge	
Towing equipment – removable factory-fitted towbar usually requires a 13-to 7-pin adapter. Please ask your Audi Centre for details	•	•	•	-	•	£553.19	£650.00

Colour and trim guide

Standard seats – Interior trim colours:

Order code	Upholstery	Carpet	Dashboard	Headlining	Mikado cloth	Mondial cloth*	Volterra leather*	Valcona leather*
NK	Black	Black	Black/Black	Silver	•	•	•	•
NQ	Light grey	Light grey	Graphite/Light grey	Silver	•	•	•	-
MF	Deep blue	Deep blue	Deep blue/Deep blue	Silver	•	•	•	-
NR	Beige	Beige	Tan beige/Beige	Beige	-	•	•	•
NX	Vanilla	Black	Black/Black	Vanilla	-	-	-	•
NW	Vanilla	Deep blue	Deep blue/Deep blue	Vanilla	-	-	-	•

Sports seats – Interior trim colours:

Order code	Upholstery	Carpet	Dashboard	Headlining	Strato cloth	Alcantara/ leather*	Volterra leather*	Valcona leather*
NK	Black	Black	Black/Black	Silver	•	•	-	•
NQ	Light grey	Light grey	Graphite/Light grey	Silver	•	•	-	•
NY	Graphite/Black	Black	Black/Black	Silver	-	-	•	-
NZ	Pale grey/Light grey	Light grey	Graphite/Light grey	Silver	-	-	•	-
NM	Amaretto brown	Black	Black/Black	Silver	-	-	-	•

S4 Recaro Sports seats – Interior trim colours:

Order code	Upholstery	Carpet	Dashboard	Headlining	Profile cloth/ leather	Alcantara/ leather*	Silk Nappa leather*
ZM	Black	Black	Black/Black	Black	•	•	•
ZR	Silver/Black	Black	Black/Black	Black	-	•	-
ZV	Silver	Black	Black/Black	Silver	-	•	•
ZU	Crimson red	Black	Black/Black	Black	-	-	•

S line Special Edition Sports seats – Interior trim colours:

Order code	Upholstery	Carpet	Dashboard	Headlining	Volterra leather	Valcona leather*
QP	Graphite grey/Black	Black	Black/Black	Black	S	-
QE	Black	Black	Black/Black	Black	-	•





Audi Centre-Fitted Accessory Packs

	Standard	SE	S line	S4 quattro	S line Special Edition	Total RRP inc. VAT*
Protection Pack <ul style="list-style-type: none"> • Front mudflaps • Rear mudflaps • Front rubber mats • Rear rubber mats • Bumper protection film 	•	•	•	•	•	£295.00
Premium Protection Pack (Saloon only) <ul style="list-style-type: none"> • Front mudflaps • Rear mudflaps • Front rubber mats • Rear rubber mats • Bumper protection film • Headlight protectors • Flexible load-liner 	•	•	•	•	•	£375.00
Heavy-Duty Protection Pack (Avant only) <ul style="list-style-type: none"> • Front mudflaps • Rear mudflaps • Front rubber mats • Rear rubber mats • Bumper protection film • Headlight protectors • Rigid load-liner 	•	•	•	•	•	£515.00
Family Pack <ul style="list-style-type: none"> • Child seat (9 months – 12 years) • Storage bag 	•	•	•	•	•	£255.00
Touring Pack <ul style="list-style-type: none"> • Roof bars • Mini-bar • Storage bag • First-aid kit 	•	•	•	•	•	£325.00
Security <ul style="list-style-type: none"> • Tracker monitor** 	•	•	•	•	•	£385.00
Road Angel <ul style="list-style-type: none"> • Road Angel Plus 	•	•	•	•	•	£300.00
DVD Rear Seat Entertainment <ul style="list-style-type: none"> • 7" DVD screen (not available for vehicles with sunroof) 	•	•	•	•	•	£735.00

Options are subject to availability and may extend delivery.

• = Available

Please note: All S line, S line Special Edition and S4 models have colourless indicator lenses in the headlamps, not orange as shown.

RRP – Recommended Retail Price.

*Price includes fitting.

**Excludes subscription

CO₂ data and information

CO₂ emissions-based Vehicle Excise Duty

Vehicle Excise Duty (Road Fund Licence) is based upon the type of fuel a vehicle uses and the amount of Carbon Dioxide (CO₂) it emits, measured in grams per kilometre (g/km). The DVLA has created six categories for petrol and diesel engines.

CO₂ emission figures

The CO₂ emission figures quoted in the technical data section on pages 24-27 are based on a fully laden vehicle, including the driver, and the heaviest possible options configuration. Actual CO₂ emissions may be lower depending on options selected.

	Petrol and Diesel engines
A – up to 100g/km	£0.00
B – 101 to 120g/km	£35.00
C – 121 to 150g/km	£115.00
D – 151 to 165 g/km	£140.00
E – 166 to 185 g/km	£165.00
F – 186 to 225g/km	£205.00
G – over 226g/km	£300.00

Servicing

Servicing tailored to your needs

Prior to the 2000 model year, almost all Audi models followed a traditional fixed Service Schedule similar to that of other major car manufacturers: a Lubrication Service every 10,000 miles and an Inspection Service every 12 months or 20,000 miles – whichever occurred sooner. Since then, Audi has introduced a more flexible maintenance system that works in accordance with how, where and how much an individual uses their car.

The two Servicing Regimes available are the conventional 'Inspection Service Regime' and the flexible 'LongLife Service Regime'. When you purchase a new car, we will recommend one of these regimes to you depending on your own individual driving style and journey-type. The tables below should give you an indication of which regime might be more appropriate for you.

With the LongLife Service Regime, on-board sensors continuously monitor the condition of the engine oil in terms of temperature, level & oil degradation. The monitoring system also checks mileage, brake-pad wear and battery condition. Using this information, the car's on-board computer calculates its own maintenance interval, providing you with ample warning of a due Service via the 'distance to Service' display.

Inspection Service Regime

	Vehicle usage:
Mileage	Less than 10,000* miles per annum.
Type of Journey	Mainly city/town centre driving. Short journeys.
Conditions	Frequent cold starts. High engine loading – e.g. frequent hill climbs, vehicle fully loaded, towing.
Driving style	Uneconomical – e.g. heavy acceleration, heavy braking, constant changes in speed, constant use of high revs, 'sporty' driving.

	Service intervals:
Oil-change Service	Every 10,000* miles/1 year
Interval Service	Every 20,000* miles/2 years
Interval Service Inspection	Every 40,000* miles/4 years

In practice, this means that every Audi gets the maintenance it needs, when it needs it. For companies and private owners alike, there are many advantages to the LongLife Service Regime. Longer service intervals mean lower maintenance costs, and thus lower whole-life costs. According to company car mileage monitored at Audi since the introduction of LongLife, petrol engines are typically achieving an average of at least 17,500 miles and diesel engines around 20,000 miles between services.

One of the factors that makes this kind of servicing regime possible is the advanced engineering and technology that goes into Audi engines. Furthermore, Audi use high-grade long-life oils such as Castrol SLX LongLife III, which are designed to withstand ageing and high loads without deterioration. Compared to conventional oils, these advanced-formulation oils also give exceptional levels of engine protection, are kinder to the environment and deliver average fuel savings of 2.7%.

LongLife Service Regime

	Vehicle usage:
Mileage	More than 30 miles per day.
Type of Journey	Motorway and main road driving. Mainly longer distance journeys. Constant speeds.
Conditions	Normal engine loading – e.g. with little or no towing, with little or no hill climbs. Normal vehicle loading.
Driving style	Moderate acceleration, moderate braking, engine revs mainly below 3000.

	Service intervals:
Interval Service	Flexible to a maximum 20,000* miles/2 years
Interval Service Inspection	Every 40,000* miles/4 years

*Mileages are approximate as the Service Indicator system uses kilometres as its distance measurement.

Service by Design

At Audi, we believe our customers have the right to expect excellent service each and every time they make contact with us. To ensure that this happens, we have agreed a set of service standards with our Audi Centre network that governs the way they do business with you. These standards apply to both Sales and Aftersales, and we actively monitor our Centres to ensure that you receive the highest level of customer service. These service standards will ensure a consistent, stress-free experience whenever you are in contact with anyone representing the Audi brand.

Every Audi Centre will be open during the following hours:

Sales: 9am–6pm Monday to Friday

9am–5pm Saturday

Service: 8am–6pm Monday to Friday

8.30am–1pm Saturday

Sunday opening at local discretion.

Test drives

Whilst we cannot always have the desired demonstrator car ready immediately, we will confirm arrangements for a test drive within two working days (subject to status).

New Car delivery

Once we have confirmed a delivery date with you, we will keep you informed of progress. In the unlikely event of a delay, we will provide you with a courtesy car to minimise inconvenience and keep you mobile.

Delivery to any location within the UK

To maximise your Audi experience right from the first day of ownership, we will deliver your car to your preferred location – whether that's home or your place of work (subject to reasonable notice).

Every attention to detail

Your ownership experience starts with half a tank of fuel.

Quotation response

We are committed to answering any quotation request within 1 working day.

Training

We run a continuous training development programme for all our staff so that we consistently deliver a high-quality, professional service.

Formal complaints procedure

We have a complaints procedure designed to ensure any negative issue you raise with us is dealt with properly.

Courtesy cars

When your car is off the road, perhaps due to a scheduled service or MOT, we will offer you an Audi Courtesy Vehicle until yours is ready. We'll even collect from and deliver to your chosen location, keeping hassle to an absolute minimum.

All our courtesy cars are insured and fuelled

Upon collection or delivery, your courtesy car will have a minimum of a quarter of a tank of fuel; all we ask is that you replace any fuel used before returning it to us. On presentation of your driving licence, we will also insure the car free of charge.

Service bookings

If you do not require a courtesy car, we will service your Audi within a maximum of 5 working days. If you do choose to take a courtesy car, we will promise to service your vehicle within a maximum of 10 working days.

Cleaning

When your car comes to our workshop, we will wash and vacuum it at no extra cost.

No hidden charges

You will be consulted before we carry out any necessary work on your vehicle, and anything charged for will be itemised on your bill. No extra work will be undertaken without your permission.

A personal service

All work will be done by a named Audi technician, to whom you can personally direct questions or requests should you need to.

Environmental commitment

We promise to dispose of all non-biodegradable materials from your vehicle in a responsible manner.



Pricing information

Pricing

Prices and specifications given are correct at the time of printing. Always check details with your Audi Centre, as Audi policies are continually developing. We reserve the right to change prices or specifications at any time.

All prices are subject to VAT, currently charged at 17.5%.

Delivery charges and numberplates are not included in the vehicle price.

<u>Delivery charge</u>	<u>£471.06</u>
<u>Numberplates</u>	<u>£20.00</u>
<u>VAT</u>	<u>£85.94</u>
<u>Total</u>	<u>£577.00</u>

Audi Roadside Assistance

Your new car comes complete with free roadside assistance and recovery across the UK provided by RAC Motoring Services. Your 24 months' free cover can be extended for a further year free-of-charge, provided that your vehicle is serviced and, if necessary, repaired by an Authorised Audi Centre or Audi-Authorised Repairer in accordance with the manufacturer's instructions.

Audi Customer Care

Every new Audi benefits from the comprehensive Audi Customer Care Package, which comprises:

- ▶ A 3-year Audi warranty, which covers you for unlimited mileage in the first 2 years of ownership, with a full mechanical and electrical warranty which covers you for up to 60,000 miles in the 3rd year
- ▶ A 3-year paint warranty
- ▶ A 12-year anti-corrosion warranty
- ▶ Up to 3 years' UK roadside assistance and recovery.

This package, together with Audi variable Service intervals, offers a combination unmatched by any other major manufacturer. Contact your Audi Centre for full details.

Audi Tax-Free Sales

If you are entitled to purchase a vehicle free of VAT, normally through Military or Diplomatic privilege, please contact your local Audi Centre for full details.

Should you have any difficulty obtaining the information you require, please call Freephone 0800 585878.

Audi Finance

Audi Finance specialise in providing funding solutions for Audi drivers. Whether your Audi is for private or business use, there are a range of funding options to choose from. Below is the full range of finance products.

- ▶ Solutions – a Personal Contract Plan
- ▶ Hire Purchase
- ▶ Lease Purchase
- ▶ Finance Lease
- ▶ Contract Hire

With all products, you can choose a fixed cost maintenance plan designed to help you budget accurately. No matter what Audi model you choose, your local Audi Centre can provide you with a personalised quote which could fit your budget and motoring needs. Audi Finance is a trading name of Volkswagen Financial Services (UK) Limited. An offer of finance depends on certain conditions. Available to people over 18 in the UK only.

Audi Insurance

Competitive comprehensive motor insurance designed specially for Audi drivers. All new Audi models come with complimentary seven-day cover upon request – we'll email a cover note directly to your Audi Centre, enabling them to tax your car easily. This way, you can drive straight out of the showroom. Taking out an annual policy is easy and can begin as soon as your free seven-day cover expires. For more information, contact your local Audi Centre. Alternatively, call 0800 051 3146 for a quote and to receive 7 days' complimentary cover for your new Audi. Audi Insurance is underwritten and administered by Zurich Insurance Company.

Audi UK

Customer Service
P.O. Box 400
Walsall
WS5 4XX
0800 699888
www.audi.co.uk

Specifications and
prices subject to
change without notice.

© Audi (UK)

Printed in the UK
Edition 6. 03/07
2007 Model Year