



The new A6 and S6  
Pricing and Specification Guide





# A User's Guide

This guide has been designed to help you tailor and price your chosen Audi model quickly and logically. At the back of this guide, there is a fold-out price calculator which you can fill out as you go along. Here you will also find information on CO<sub>2</sub> emissions-based taxation and the other services offered by Audi, including Finance and Insurance. Alternatively, you can go to [audi.co.uk](http://audi.co.uk) and configure your Audi online.

## Table of content

	Page Number
The Audi A6 Saloon and Avant	4
Standard equipment	6
S line trim	10
Le Mans Edition	12
S6	14
quattro®	16
Engines	17
Audi exclusive	18
<b>A6 and S6 Saloon and Avant prices</b>	<b>20</b>
Transmissions	20
Technical data	22
Paint finishes	24
Upholstery	28
Additional upholstery options	30
Audi A6 model premiums	32
Packages	32
Wheels, tyres and suspension	34
Audio and communication	36
Seats	37
Safety and security	38
Steering wheels	39
Interior equipment	40
Exterior equipment	42
Colour and trim guide	44
Audi Centre Approved Accessories	48
CO <sub>2</sub> data and information	52
Servicing	52
Service by Design	53
Pricing information	54



## The Audi A6 Saloon and Avant

The Audi A6 Saloon and Avant are two of the most desirable models in the prestige market. With their striking single-frame grille and dynamic body lines, these models exude luxury, energy and sophistication – impressions that certainly come to life on closer inspection. The choice of FSI® petrol engines, for instance, originate directly from motorsport, where the remarkably efficient direct-injection principle has enabled Audi to dominate the circuit, race after race. An impressive range of equally economical, piezo-injected TDI® diesel engines complete this extensive engine line-up. Inside, both models are more than equipped to complement your lifestyle – the Saloon with its luxurious finish and sophisticated technologies, the Avant with its 1,660-litre load-area and ingenious luggage-securing concept. Discover every component of Vorsprung durch Technik for yourself over the following pages.

## Standard equipment

7.5J x 17 '5-spoke star' alloy wheels with 225/50 R17 Y tyres  
12V power socket in luggage compartment  
(Avant models only)

Anti-lock Braking System (ABS) with Electronic Brake-pressure Distribution (EBD)

Active front head restraints

Air vents with aluminium trim, 4 vents on the dashboard,  
2 for the rear between the front seats, illuminated controls

Aluminium fascia and door trim inlays

Aluminium look in interior, on door handles, MMI control knob and gear lever

Ashtrays, illuminated, at the front of the centre console and in the rear doors

Anti-Slip Regulation (ASR) traction control. Prevents the driven wheels from spinning by reducing engine speed

Anti-theft alarm with tow-away protection including interior monitoring (Thatcham Category 1 approved)

Automatic air-conditioning plus. Separate air distribution for driver and front passenger with digital temperature-display, automatic air recirculation via air-quality sensor, combined pollutant-and pollen-filter and air humidity sensor

Body-coloured door mirrors, handles and bumpers

Brake light – third brakelight in rear window

Brake system: disc brakes at front and rear, ventilated at front (and rear on 4.2 quattro models)

CD player located in glove compartment  
(not on 2.0 TFSI or 2.0 TDI)

CD changer located in glove compartment  
(2.0 TFSI and 2.0 TDI only)

Centre armrests, front and rear. Front hinged with storage compartment

Central locking with radio remote-control

Centre console with ashtray, storage compartments and MMI terminal

Child locks, electric for rear doors and windows

Cigarette lighters at the front and rear

Coat hooks with cushioned action, two recessed in rear roof area

Compartment for glasses in front roof module

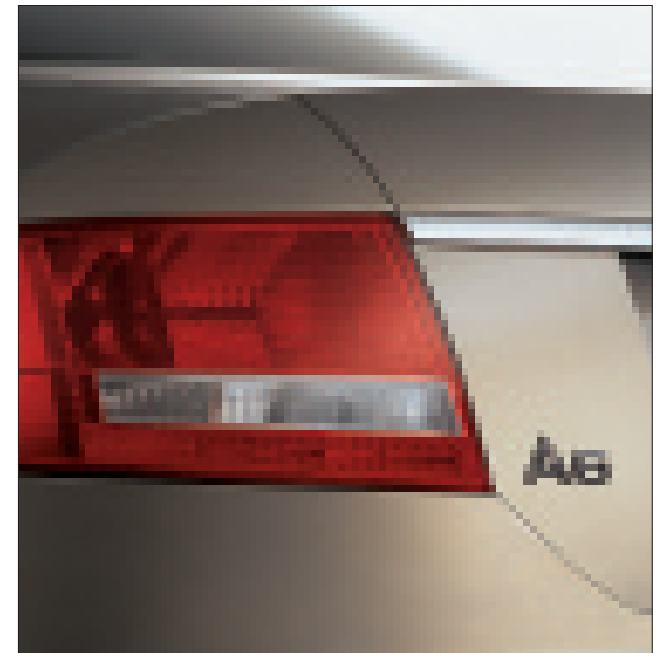
Cruise control



Cup holder within the centre console storage-compartment and a second cup holder beneath the front centre armrest  
 Driver and front passenger two-stage airbags with front passenger airbag deactivation  
 Driver's Information System (DIS) with monochrome display  
 Dynamic suspension system  
 Electric front and rear windows  
 Electrically adjustable and heated door mirrors  
 Electronic Differential Lock (EDL) traction control  
 Electromechanical Parking Brake  
 Electronic Stability Program (ESP). Networks the ABS, EBD, ASR and EDL systems, ensuring greater stability at all speeds by braking individual wheels as required and overriding the engine-management system

Exhaust pipes – twin chrome (downturned on diesel models)  
 Exit lights and active reflectors on all doors  
 Floor mats front and rear  
 Four-link front suspension  
 Front fog-lights, ellipsoidal, integrated into front apron  
 Glove box on the passenger's side, lockable  
 Head restraints for all five seats  
 Headlights – halogen in clear glass with electric adjustment  
 Heated rear window  
 Heat-insulating glass (green-tinted)  
 High-gloss pack with aluminium-look window-and door-handle trims with gloss-black B-pillar  
 Illuminated vanity mirrors integrated into front sun visors

Immobiliser, electronic  
 ISOFIX child-seat mounting (front-left and outer-rear seats)  
 Light sensor for automatic activation of headlights including coming home/leaving home function  
 Load area concept comprising rail system, lashing points and folding load-area floor (Avant models only)  
 Luggage compartment cover (Avant models only)  
 MMI with 10 loudspeakers and a 6.5" monochrome screen in dashboard with DSP sound system (160 Watt total output)  
 Partition net (Avant models only)  
 quattro® permanent four-wheel-drive (quattro models only)  
 Rain sensor for automatic activation of front wipers  
 Reading lights – two at front and two at rear



# Standard equipment

- Rear fog light
- Rear suspension, front-wheel-drive models with torsion beam, quattro models with double wishbone
- Rear window wash/wipe (Avant models only)
- Roof rails in aluminium (Avant models only)
- Satellite Navigation system with route planning and guidance using voice and pictogram instructions, with UK CD-ROM 2.0 TFSI and 2.0 TDI models only)
- Scuff plates with metal inlays
- Seatbelts, 3-point for all seats with front belt-force limiters
- servotronic steering – power steering with speed-dependent control
- Side airbags for driver and front passenger

- Side-impact protection in all doors
- Sideguard head airbag system to protect front and outer rear passengers in a side collision
- Spare wheel – full size alloy
- Split-folding rear seats (Avant and quattro Saloon models only)
- Steering column – safety, with manual height and reach adjustment
- Steering wheel – 4-spoke, leather-covered multi-function with audio and basic MMI controls (with paddle-shift gear-change on automatic models)
- Tool kit in luggage compartment
- Towing lugs at front and rear

- Twin catalytic converters
- Upholstery – Meridian cloth
- Visible Vehicle Identification Number (VIN)
- Warning triangle
- Windscreen-washer jets, heated





**Additional equipment for all quattro models:**

80-litre fuel tank

**Additional equipment for 4.2 quattro models:**

7.5J x 17 '16-spoke' design alloy wheels  
with 225/50 R17 Y tyres

80-litre fuel tank

Electric front seats with adjustment for height, inclination,  
forwards and backwards position and backrest angle

Electric lumbar support

Enhanced brake system

Headlight cleaning system

Heated front seats

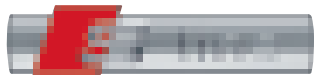
LED rear brake lights

Volterra leather upholstery

Walnut wood fascia and door-trim inlays

Xenon Plus headlights





## S line trim

At Audi, we don't make cars that just look sporty; we make cars that literally raise the heart-rate, set the endorphins racing and take your breath away. Add an S line trim to your chosen model and you will enhance that experience even further. Featuring a range of muscular additions, including S line body styling, part-leather S line Sports seats and S line Sports suspension, the Audi A6 Saloon or Avant S line delivers a dynamic driving experience every time you get behind the wheel.

Please refer to page 32 for S line prices.



## Includes

8J x 18 '5-arm' design alloy wheels with 245/40 R18 Y tyres

Black cloth headlining

Enhanced brake system (3.2 FSI and 3.0 TDI only)

Front Sports seats with S line logo, including electrically adjustable lumbar support for both front seats

Gear knob in perforated leather

Headlight washers

Leather covered 3-spoke S line multi-function steering wheel (with paddle-shift gear-change for automatic models)

Matt-brushed aluminium fascia and door trims

Radiator grille in S line design

Seat upholstery with seat-side sections in black leather and seat-centre section in black Speed cloth

S line badge (front grille and side wing)

S line body styling (front bumper and rear diffuser in sports design)

S line Sports suspension



## Audi A6 'Le Mans' Edition

Audi is no stranger to victory at Le Mans. Since 2000, we've won the world-famous 24-hour race six times out of seven, five times in the legendary Audi R8 – which, since 2001, has had an FSI direct-injection petrol model famed for its remarkable power and fuel-efficiency. In 2006, however, Audi set itself a challenge – to be the first manufacturer ever to win Le Mans with a diesel car. What followed on 18 June 2006 was a new chapter in motorsports history, as the Audi R10 TDI sped past the finishing line at the 'Grand Prix of Endurance' in first place.

In recognition of this momentous achievement, we're producing a very special, Limited Edition 'Le Mans' A6 – a powerful 3-litre diesel model, featuring the remarkably fuel-efficient TDI technology which propelled Audi and the R10 to an historic victory in this year's race. Unlike the R10, however, this model comes complete with the following sporty, luxurious features.





**The 'Le Mans' Edition is based on the S line trim and includes the following items of specification in addition to the 3.0 TDI quattro S line model:**

**Luxury pack**

- Volterra leather upholstery
- Heated front seats
- Rear acoustic-parking system
- Interior light package
- Unique Le Mans badges located on the side wings beneath indicator lenses

8.5J x 19 7-arm double-spoke alloy wheels with 255/35 R19 tyres

Metallic/pearl effect paint including unique S line colours

**Le Mans Edition Saloon**

Basic RRP	Recommended OTR
<b>£29,127.66</b>	<b>£35,035.00</b>

**Le Mans Edition Avant**

Basic RRP	Recommended OTR
<b>£30,208.51</b>	<b>£36,325.00</b>

Available with automatic tiptronic transmission for an additional £1400.00 RRP inc VAT.

Recommended 'On-The-Road' (OTR) retail prices include: delivery charge, half a tank of fuel, numberplates at £577.00 (inc. VAT), Road Fund Licence (which may vary depending on model, see page 54 for details) and first registration fee at £38.00.

For OTR price calculations, the maximum possible Road Fund Licence value has been used (see page 52 for details). RRP – Recommended Retail Price.

Only limited volumes available



Confident, imposing and supremely sporty, the Audi S6 is the latest addition to the A6 model range. Whether you opt for Saloon or Avant, this model features one incredibly potent engine – the 5.2 V10 FSI. The first ever V10 from Audi, this 435PS powerhouse has been developed with technical input from Lamborghini. The performance speaks for itself – a 0-62 mph sprint in the Saloon takes just 5.2 seconds, with a mere tenth-of-a-second's difference in the Avant – a fair compromise considering the latter's cavernous 1,660-litre load-capacity. Channelling all that power and maximising both handling and agility, the latest generation of quattro® permanent four-wheel-drive, modified aluminium-based Sports suspension and 19" alloy

wheels are also included as standard. Yet even with such impressive performance credentials, the Audi S6 doesn't flaunt its capabilities. The exterior design is confident yet subtle, including features such as flared front wheel arches, wide mudguard, aluminium-look wing mirrors and an integrated rear spoiler. Inside, sports styling and carefully-crafted luxury come together in the laterally-supportive leather Sports seats, multi-function leather Sports steering wheel and sleek carbon fibre inlays in the door panelling, dashboard and centre console. Comfortable, refined – but without compromising the raw sportiness that gives the Audi S6 its unique appeal.

### Additional standard equipment for S6 quattro models over A6 standard model

10-cylinder 5.2 FSI engine (435PS)  
 9J x 19 5-arm 'Wing' design alloy wheels with 265/35 R19 tyres  
 6-disc CD changer  
 6-speed tiptronic automatic transmission  
 80-litre fuel tank  
 Aluminium-look wing mirrors  
 Black-painted brake callipers featuring the S6 logo at front (15" brake disks at front, 13" at rear)  
 Carbon Atlas inlays  
 Coloured instrument inserts with white needles  
 Distinctive LED daytime-running strip lights integrated in the bumper  
 Driver's Information System (DIS), in colour  
 Dual-branch oval exhaust system (4 tailpipes)  
 DVD Satellite Navigation system  
 Full-size spare wheel  
 Interior light package. Includes lighting under the exterior mirrors and ambient lighting of the centre console and front and rear door trim panels. Also includes active door reflectors in front and rear doors, footwell lights with LED technology at front and rear and rear-door exit lights.

Leather trimmed 3-spoke multi-function steering wheel with 'S6' logo and contrasting stitching and gear-change shift paddles in aluminium look  
 Leather/Alcantara 'S' Sports seats – electrically adjustable with electric lumbar support  
 MMI High. Multi-Media Interface operating system for vehicle and infotainment functions. Includes high-resolution 7" TFT colour display  
 'S' gear knob in leather and aluminium  
 'S' grille (platinum grey): double vertically-oriented chrome struts, S6 badge  
 'S' rear spoiler  
 'S' specific bumpers  
 'S' specific Sports chassis with latest-generation quattro drive, incorporating a 40/60 rear-biased torque-split  
 S6 door-sill trim in aluminium look  
 Split-folding rear seats  
 Storage pack  
 V10 badge on wheel arch below indicator  
 Xenon Plus headlights including headlight washers



### S6 quattro Saloon

Basic RRP	Recommended OTR
<b>£46,425.53</b>	<b>£55,375.00</b>

### S6 quattro Avant

Basic RRP	Recommended OTR
<b>£47,506.38</b>	<b>£56,645.00</b>



# quattro®

## Permanent four-wheel-drive

Cars that deliver as much pulling power as the Audi A6 and S6 need a harness in place – a technology that delivers safety and control whilst enhancing the sporty characteristics which make them so thrilling to drive. That's why the latest generation of quattro® permanent four-wheel-drive is available on selected A6 models and standard on the S6. The principle is simple: in the same way that four brakes ensure better deceleration, four permanently-

driven wheels deliver better acceleration and road-holding. On quattro® models, drive power is continuously distributed between the front and rear axles depending on weather conditions, road surface and gradient. And what better technology to feature on this sporty model than the one that has given Audi the edge on the racetrack ever since it was first introduced over 25 years ago.





# Engines

## Petrol

There are two kinds available on this model – the standard petrol engine and the FSI® direct-injection engine. FSI® is a unique Audi technology originally developed for the Le Mans 24-hour endurance race to deliver increased power and torque as well as enhanced fuel efficiency. The way it does this is, in theory, very simple. Fuel is injected directly into the combustion chambers, ‘unthrottling’ the engine, reducing heat-loss and increasing output – all whilst reducing fuel consumption and exhaust emissions. Ideal for the buyer who wants a sporty, exhilarating drive without the drawbacks of excessive fuel costs or high emissions-based taxation.

## Diesel

All diesel engines from Audi are known as TDI® – Turbo Direct Injection. This impressive technology was originally pioneered by Audi in 1989, marking a departure from the noisy, fuel-thirsty diesel engines of the past. Like its FSI® petrol counterpart, the TDI® diesel engine is designed for power and performance, with low fuel consumption and CO<sub>2</sub> emissions. The working principle of the TDI® engine is based upon precision and compression. A turbo-charger supplies fresh air to the engine, ensuring optimum filling of the cylinder. Immediately after compression, an injector then delivers fuel into the combustion chambers at a very high pressure. The result – you get the most in terms of performance and economy from every drop of fuel that enters the tank.



# Transmissions

## multitronic®

Audi offers a variety of different transmission options to suit your requirements and driving style. In addition to the classic manual gearbox are two innovative automatic and semi-automatic transmission options. To help you come to an informed decision, each of these is described in detail opposite.

Translating a driver’s preferences and intentions into road performance, the multitronic® transmission system entertains no compromises – whether in terms of dynamism, convenience or economy. multitronic® automatic transmission is available on models without quattro permanent four-wheel-drive. A continuously variable transmission, multitronic® can transmit up to 310 Nm of torque and permits an exceptionally wide range of gear ratios. The result is smooth, powerful acceleration and a high level of driving comfort. And thanks to its lightweight design and a number of advanced electronic control systems that monitor gradient, road conditions and the way the driver is using the accelerator pedal, multitronic® also plays an instrumental role in reducing fuel consumption.

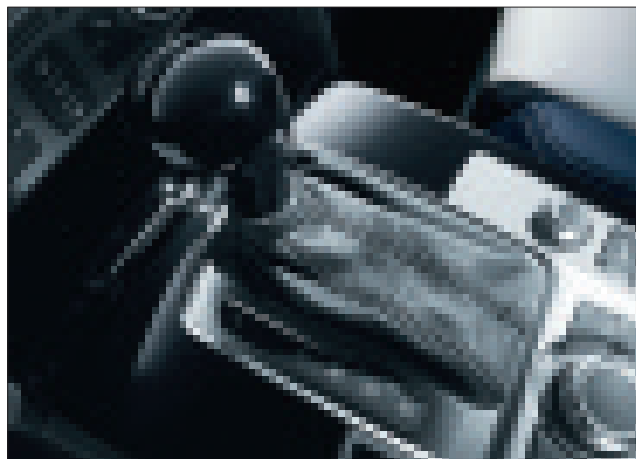
## tiptronic

The 6-speed tiptronic transmission system is a form of automatic transmission available on Audi models with quattro® permanent four-wheel-drive. The technology converts high-torque engine power into both sporty performance and operating convenience, with crisp, fast gear changes, reduced weight and an optimised gearshift strategy. More spontaneous gear changes are a particular benefit, especially when down-shifting. Both in the ‘D’ (Drive) and ‘S’ (Sport) programme, the advanced electronics used in tiptronic respond efficiently to every driver input, helping to prevent unwanted upshifts when cornering.

# Audi exclusive

In a car made from Vorsprung durch Technik, exclusivity comes as standard. In the Audi A6 and S6 it's present in everything, from the distinctive single-frame front grille to the stylish tail lights. But for that extra element of exclusivity, customise your Audi according to your

own unique taste with options from Audi exclusive. Whether you want Fine Nappa leather seats, a part-wood steering wheel or even customised seatbelts in your chosen model, Audi exclusive offers an impressive number of options to make it your own.



## Upholstery

	2.0 TDI/2.0 TFSI	2.4/2.4 quattro/ 2.8 FSI	2.7 TDI/ 2.7 TDI quattro	3.2 FSI	3.2 FSI quattro/ 3.0 TDI quattro	4.2 quattro	S6 quattro	Basic RRP	Total RRP inc. VAT
<b>exclusive leather equipment and trim (package 1) in Fine Nappa leather.</b> Front and rear seat upholstery, door trim inserts, front seat backrest covers, head restraints and front centre armrest from Audi exclusive colour range	•	•	•	•	•	•	-	£2,808.51	£3,300.00
	-	-	-	-	-	-	-	£2,212.77	£2,600.00
<b>exclusive leather equipment and trim (package 1) in Fine Nappa leather/Alcantara.</b> As above (only with Sports seats and split-folding rear seats)	•	•	•	•	•	-	-	£2,808.51	£3,300.00
	-	-	-	-	-	-	-	£2,212.77	£2,600.00
<b>exclusive leather equipment and trim (package 1) in Valcona leather.</b> As above	•	•	•	•	•	-	-	£3,106.38	£3,650.00
	-	-	-	-	-	-	-	£2,510.64	£2,950.00
<b>exclusive leather equipment and trim (package 2) in Fine Nappa leather.</b> As package 1 plus centre console in leather, armrest in door trims in leather, colour keyed lower section of front armrest and colour keyed switch panel in door handle	•	•	•	•	•	-	-	£4,851.06	£5,700.00
	-	-	-	-	-	•	-	£4,255.32	£5,000.00
<b>exclusive leather equipment and trim (package 2) in Fine Nappa leather/Alcantara.</b> As above (only with Sports seats and split-folding rear seat)	•	•	•	•	•	-	-	£4,851.06	£5,700.00
	-	-	-	-	-	•	-	£4,255.32	£5,000.00
<b>exclusive leather equipment and trim (package 2) in Valcona leather.</b> As above	•	•	•	•	•	-	-	£5,106.38	£6,000.00
	-	-	-	-	-	•	-	£4,510.64	£5,300.00

## Safety and security

	2.0 TDI/2.0 TFSI	2.4/2.4 quattro/ 2.8 FSI	2.7 TDI/ 2.7 TDI quattro	3.2 FSI	3.2 FSI quattro/ 3.0 TDI quattro	4.2 quattro	S6 quattro	Basic RRP	Total RRP inc. VAT
<b>exclusive seatbelts</b> from Audi exclusive colour range	.	.	.	.	.	.	.	£1,063.83	£1,250.00

## Steering wheels

<b>exclusive 4-spoke part-wood design</b> (must be combined with a 4-spoke steering wheel)	.	.	.	.	.	.	-	£553.19	£650.00
<b>exclusive 'leather' steering wheel rim</b> from Audi exclusive colour range	.	.	.	.	.	.	.	£255.32	£300.00

## Interior equipment

<b>exclusive controls pack.</b> Leather steering wheel rim and gear knob from Audi exclusive range	.	.	.	.	.	.	.	£382.98	£450.00
<b>exclusive 'wood' gear lever – manual</b>	.	.	.	.	.	.	-	£127.66	£150.00
<b>exclusive 'wood' gear lever – tiptronic/multitronic®</b>	.	.	.	.	.	.	.	£153.19	£180.00
<b>exclusive wood inlays.</b> Fascia and door trim inlays from Audi exclusive range	.	.	.	.	.	.	.	£765.96	£900.00
<b>exclusive floormats</b> with leather piping from Audi exclusive colour range	.	.	.	.	.	.	.	£255.32	£300.00
<b>exclusive carpet</b> (including exclusive floormats with piping) from Audi exclusive colour range	.	.	.	.	.	.	.	£1,276.60	£1,500.00
<b>exclusive 'leather' neck rest (each)</b> from Audi exclusive colour range	.	.	.	.	.	.	.	£106.38	£125.00
<b>exclusive driver's cockpit in black leather</b>	.	.	.	.	.	.	.	£765.96	£900.00
<b>exclusive driver's cockpit in leather.</b> Available in a choice of Regency green, Victoria blue, Palace blue, Saddle brown, Classic red or Havanna brown	.	.	.	.	.	.	.	£1,148.94	£1,350.00

# The new A6 and S6 Saloon and Avant prices



## Prices Saloon

### Petrol

	Power	Transmission	ABI insurance group	Basic RRP	VAT	Total RRP inc. VAT	Recommended OTR
2.0 TFSI SE	170PS	6-speed manual	15E	£20,902.13	£3,657.87	£24,560.00	£25,365.00
2.4 SE	177PS	6-speed manual	15E	£20,936.17	£3,663.83	£24,600.00	£25,425.00
2.4 quattro SE	177PS	6-speed manual	15E	£22,297.87	£3,902.13	£26,200.00	£27,025.00
2.8 FSI	210PS	6-speed manual	TBA	£22,765.96	£3,984.04	£26,750.00	£27,555.00
3.2 FSI SE	256PS	6-speed manual	17E	£26,127.66	£4,572.34	£30,700.00	£31,525.00
3.2 FSI quattro SE	256PS	6-speed manual	17E	£27,489.36	£4,810.64	£32,300.00	£33,125.00
4.2 FSI quattro SE	350PS	6-speed tiptronic	18E	£37,148.94	£6,501.06	£43,650.00	£44,475.00
S6 quattro	435PS	6-speed tiptronic	20E	£46,425.53	£8,124.47	£54,550.00	£55,375.00

### Diesel

	Power	Transmission	ABI insurance group	Basic RRP	VAT	Total RRP inc. VAT	Recommended OTR
2.0 TDI SE	140PS	6-speed manual	14E	£21,059.57	£3,685.43	£24,745.00	£25,520.00
2.7 TDI SE	180PS	6-speed manual	15E	£22,727.66	£3,977.34	£26,705.00	£27,515.00
2.7 TDI quattro SE	180PS	6-speed tiptronic	15E	£25,280.85	£4,424.15	£29,705.00	£30,515.00
3.0 TDI quattro SE	233PS	6-speed manual	16E	£26,570.21	£4,649.79	£31,220.00	£32,030.00
3.0 TDI quattro Le Mans Edition	233PS	6-speed manual	16E	£29,127.66	£5,097.34	£34,225.00	£35,035.00

Please note: The maximum power output figures are quoted in PS (or Pferdestärke, which is the metric equivalent of brake horsepower). To convert to horsepower, divide the PS figure by 1.0139.

Recommended 'On-The-Road' (OTR) retail prices include: delivery charge, full tank of fuel, numberplates at £577.00 (inc. VAT), Road Fund Licence (which may vary depending on model, see page 54 for details) and first registration fee at £38.00.

For OTR price calculations, the maximum possible Road Fund Licence value has been used (see page 52 for details). RRP – Recommended Retail Price.

## Prices Avant



### Petrol

	Power	Transmission	ABI insurance group	Basic RRP	VAT	Total RRP inc. VAT	Recommended OTR
2.0 TFSI SE	170PS	6-speed manual	15E	£22,238.30	£3,891.70	£26,130.00	£26,935.00
2.4 SE	177PS	6-speed manual	15E	£22,272.34	£3,897.66	£26,170.00	£26,995.00
2.4 quattro SE	177PS	6-speed manual	15E	£23,378.72	£4,091.28	£27,470.00	£28,295.00
2.8 FSI	210PS	6-speed manual	TBA	£24,102.13	£4,217.87	£28,320.00	£29,125.00
3.2 FSI SE	256PS	6-speed manual	17E	£27,463.83	£4,806.17	£32,270.00	£33,095.00
3.2 FSI quattro SE	256PS	6-speed manual	17E	£28,570.21	£4,999.79	£33,570.00	£34,395.00
4.2 FSI quattro SE	350PS	6-speed tiptronic	18E	£38,229.79	£6,690.21	£44,920.00	£45,745.00
S6 quattro	435PS	6-speed tiptronic	20E	£47,506.38	£8,313.62	£55,820.00	£56,645.00

### Diesel

	Power	Transmission	ABI insurance group	Basic RRP	VAT	Total RRP inc. VAT	Recommended OTR
2.0 TDI SE	140PS	6-speed manual	14E	£22,395.74	£3,919.26	£26,315.00	£27,090.00
2.7 TDI SE	180PS	6-speed manual	15E	£24,063.83	£4,211.17	£28,275.00	£29,085.00
2.7 TDI quattro SE	180PS	6-speed tiptronic	15E	£26,361.70	£4,613.30	£30,975.00	£31,785.00
3.0 TDI quattro SE	233PS	6-speed manual	16E	£27,651.06	£4,838.94	£32,490.00	£33,320.00
3.0 TDI quattro Le Mans Edition	233PS	6-speed manual	16E	£30,208.51	£5,286.49	£35,495.00	£36,325.00

## Transmission

	2.0 TDI/2.0 TFSI	2.4/2.4 quattro/ 2.8 FSI	2.7 TDI/ 2.7 TDI quattro	3.2 FSI/ 3.2 FSI quattro	3.0 TDI quattro	4.2 quattro	S6 quattro	Basic RRP	Total RRP inc. VAT
<b>Automatic multitronic® transmission with DRP 7-speed</b>	•	•/-/•	•/-	•/-	-	-	-	£1,234.04	£1,450.00
<b>Automatic tiptronic transmission with DSP 6-speed</b>	-	-	-/s	-/•	•	s	s	£1,191.49	£1,400.00

# Technical data

## Saloon



### Petrol

Engine	Cylinder	Transmission	CO <sub>2</sub> emissions g/km	Fuel consumption*			Acceleration, seconds, 0-62 mph	Top speed, mph
				Urban	Extra Urban	Combined		
2.0 TFSI	In line 4	6-speed manual	189	26.2 (10.8)	45.6 (6.2)	35.8 (7.9)	8.4	141
	In line 4	7-speed multitronic®	197	25.2 (11.2)	43.5 (6.5)	34.4 (8.2)	8.7	137
2.4	V6	6-speed manual	233	19.8 (14.3)	39.8 (7.1)	29.1 (9.7)	8.9	143
		7-speed multitronic®	229	20.6 (13.7)	39.8 (7.1)	29.4 (9.6)	9.2	140
2.4 quattro	V6	6-speed manual	262	17.7 (16.0)	36.2 (7.8)	25.9 (10.9)	9.1	142
2.8 FSI	V6	6-speed manual	207	21.9 (12.9)	44.8 (6.3)	32.5 (8.7)	7.9	151
	V6	7-speed multitronic	209	22.1 (12.8)	43.5 (6.5)	32.1 (8.8)	7.9	148
3.2 FSI	V6	6-speed manual	233	19.8 (14.3)	39.8 (7.1)	29.1 (9.7)	6.9	155**
		7-speed multitronic®	229	20.3 (13.9)	39.8 (7.1)	29.4 (9.6)	7.0	155**
3.2 FSI quattro	V6	6-speed manual	255	18.2 (15.5)	35.8 (7.9)	26.4 (10.7)	6.8	155**
		6-speed tiptronic	262	18.0 (15.7)	34.9 (8.1)	25.9 (10.9)	7.1	155**
4.2 quattro	V8	6-speed tiptronic	257	18.1 (15.6)	34.9 (8.1)	26.2 (10.8)	5.9	155**
S6 quattro	V10	6-speed tiptronic	319	14.3 (19.7)	29.1 (9.7)	21.1 (13.4)	5.2	155**

### Diesel

Engine	Cylinder	Transmission	CO <sub>2</sub> emissions g/km	Fuel consumption*			Acceleration, seconds, 0-62 mph	Top speed, mph
				Urban	Extra Urban	Combined		
2.0 TDI	In line 4 <sup>2</sup>	6-speed manual	160	33.2 (8.5)	60.1 (4.7)	46.3 (6.1)	10.3	130
	In line 4 <sup>1</sup>	7-speed multitronic®	178	32.1 (8.8)	51.4 (5.5)	42.2 (6.7)	10.2	126
2.7 TDI	V6 <sup>2</sup>	6-speed manual	184	29.1 (9.7)	53.3 (5.3)	40.9 (6.9)	8.1	143
		7-speed multitronic®	192	28.5 (9.9)	49.6 (5.7)	39.2 (7.2)	8.3	140
2.7 TDI quattro	V6 <sup>2</sup>	6-speed tiptronic	219	24.8 (11.4)	43.5 (6.5)	34.0 (8.3)	8.9	141
3.0 TDI quattro	V6 <sup>2</sup>	6-speed manual	211	25.0 (11.3)	46.3 (6.1)	35.3 (8.0)	6.9	153
		6-speed tiptronic	223	23.5 (12.0)	46.3 (6.1)	34.0 (8.3)	7.1	153

# Avant



## Petrol

Engine	Cylinder	Transmission	CO <sub>2</sub> emissions g/km	Fuel consumption*			Acceleration, seconds, 0-62 mph	Top speed, mph
				Urban	Extra Urban	Combined		
2.0 TFSI	In line 4	6-speed manual	194	25.7 (11.0)	44.1 (6.4)	34.9 (8.1)	8.7	138
	In line 4	7-speed multitronic®	197	25.2 (11.2)	43.5 (6.5)	34.4 (8.2)	9.0	134
2.4	V6	6-speed manual	238	19.5 (14.5)	39.2 (7.2)	28.5 (9.9)	9.2	140
		7-speed multitronic®	229	20.6 (13.7)	39.8 (7.1)	29.4 (9.6)	9.5	137
2.4 quattro	V6	6-speed manual	264	17.5 (16.1)	35.8 (7.9)	25.7 (11.0)	9.4	138
2.8 FSI	V6	6-speed manual	209	21.7 (13.0)	44.1 (6.4)	32.1 (8.8)	8.2	147
	V6	7-speed multitronic	209	22.1 (12.8)	43.5 (6.5)	32.1 (8.8)	8.2	145
3.2 FSI	V6	6-speed manual	238	19.5 (14.5)	39.2 (7.2)	28.5 (9.9)	7.1	155**
		7-speed multitronic®	229	20.3 (13.9)	39.8 (7.1)	29.4 (9.6)	7.2	155**
3.2 FSI quattro	V6	6-speed manual	257	18.1 (15.6)	35.3 (8.0)	26.2 (10.8)	7.0	155**
		6-speed tiptronic	262	18.0 (15.7)	34.9 (8.1)	25.9 (10.9)	7.4	155**
4.2 quattro	V8	6-speed tiptronic	259	18.0 (15.7)	34.4 (8.2)	25.9 (10.9)	6.1	155**
S6 quattro	V10	6-speed tiptronic	319	14.3 (19.7)	29.1 (9.7)	21.1 (13.4)	5.3	155**

## Diesel

Engine	Cylinder	Transmission	CO <sub>2</sub> emissions g/km	Fuel consumption*			Acceleration, seconds, 0-62 mph	Top speed, mph
				Urban	Extra Urban	Combined		
2.0 TDI	In line 4 <sup>2</sup>	6-speed manual	163	32.8 (8.6)	58.9 (4.8)	45.6 (6.2)	10.5	127
	In line 4 <sup>1</sup>	7-speed multitronic®	178	32.1 (8.8)	51.4 (5.5)	42.2 (6.7)	10.4	125
2.7 TDI	V6 <sup>2</sup>	6-speed manual	189	28.5 (9.9)	51.4 (5.5)	39.8 (7.1)	8.3	139
		7-speed multitronic®	197	28.0 (10.1)	48.7 (5.8)	38.2 (7.4)	8.3	136
2.7 TDI quattro	V6 <sup>2</sup>	6-speed tiptronic	222	24.6 (11.5)	42.8 (6.6)	33.6 (8.4)	9.1	138
3.0 TDI quattro	V6 <sup>2</sup>	6-speed manual	214	24.8 (11.4)	45.6 (6.2)	34.9 (8.1)	7.1	150
		6-speed tiptronic	226	23.3 (12.1)	45.6 (6.2)	33.6 (8.4)	7.4	150

\*Fuel consumption according to 1999/100/EU in mpg (l/100km). Please see page 52 for details.

\*\*Electronically limited.

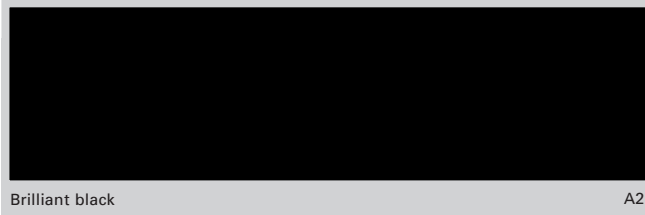
<sup>1</sup> Fitted with a Diesel Particulate Filter (DPF)

<sup>2</sup> With preparation for DPF retro fitment.

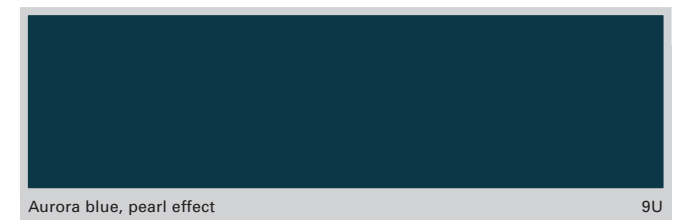
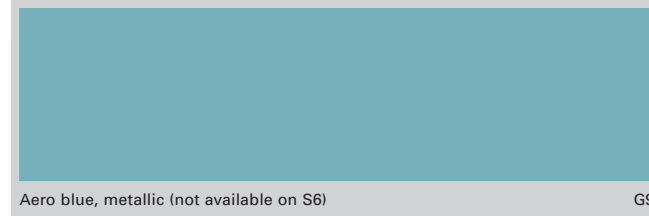
# Paint finishes

## Standard colours

## Optional colours



Basic RRP	Total RRP inc. VAT
<b>£510.64</b>	<b>£600.00</b>





## S line additional colours



Canyon red, pearl effect (not available on S6)

6P



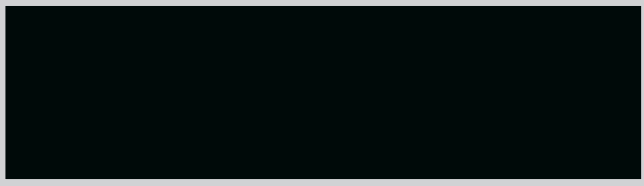
Stratos blue, pearl effect

X4



Avus silver, pearl effect – only available on S line and Le Mans Edition

C2



Deep green, pearl effect

3W



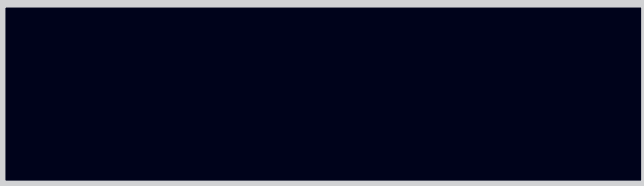
Sprint blue, pearl effect (only available on S6)

5N



Daytona grey, pearl effect – only available on S line and Le Mans Edition

6Y



Night blue, pearl effect

7X



Misano red, pearl effect – only available on S line and Le Mans Edition

N9



Phantom black, pearl effect

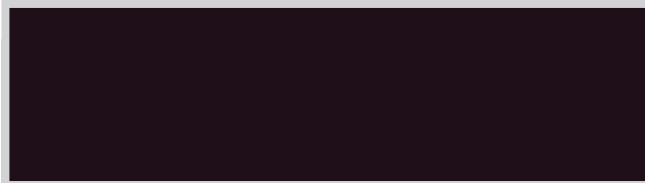
L8

Also available on other models  
at Audi exclusive paint price

# Audi exclusive

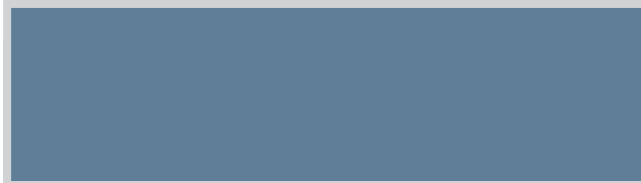
**Any colour from the range.** If you require an Audi paint colour that is not part of the A6 colour range, this can be achieved through Audi exclusive. Please ask your Audi Centre for full details.

Basic RRP	Total RRP inc. VAT
<b>£1,446.81</b>	<b>£1,700.00</b>



Amethyst grey, pearl effect

B2



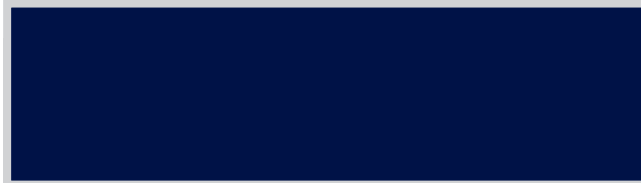
Glacier blue, pearl effect

1H



Racing green, pearl effect

8N



Santorin blue, pearl effect

5J



# Upholstery

## Cloth and leather trim

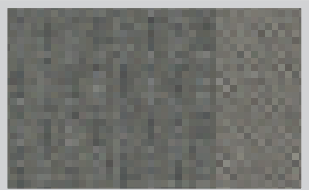
### Standard seats



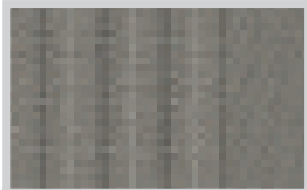
Meridian cloth, black NK



Mondial cloth, black NK



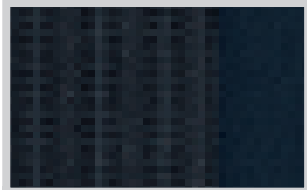
Meridian cloth, light grey NQ



Mondial cloth, light grey NQ



Meridian cloth, Deep blue MF



Mondial cloth, Deep blue MF



Mondial cloth, Cardamom beige MC

### Sports seats



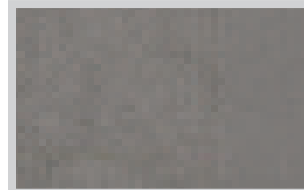
Mistral cloth, black NK



Mistral cloth, light grey NQ



Leather/Alcantara, black NK

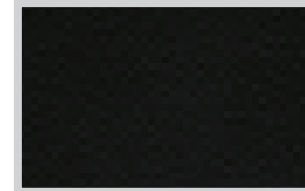


Leather/Alcantara, light grey NQ



Leather/Alcantara, Cardamom beige MC

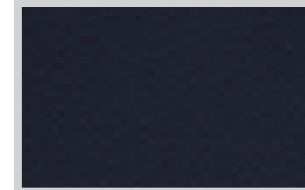
### Standard seats/ Sports seats



Volterra leather, black NK



Volterra leather, light grey NQ



Volterra leather, Deep blue MF

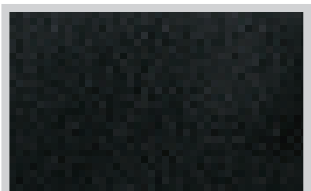


Volterra leather, Cardamom beige MC

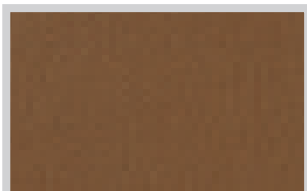


Volterra leather, Amaretto brown NM

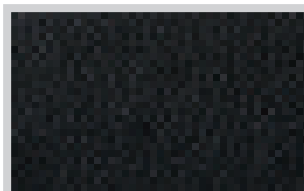
### Standard seats



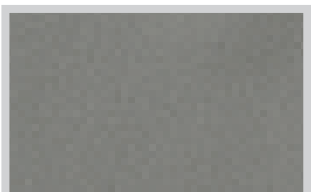
Valcona leather, black NK



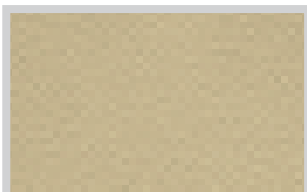
Valcona leather, Amaretto brown NM



Natural leather, black NK



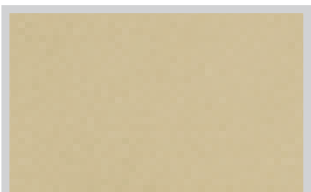
Valcona leather, light grey NQ



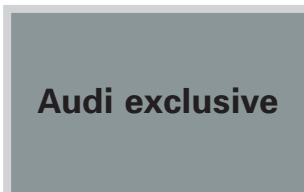
Valcona leather, Cardamom beige MC



Natural leather, beige NR

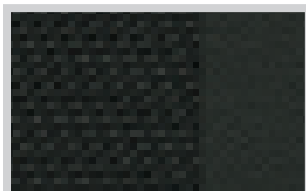


Valcona leather, cream beige NL

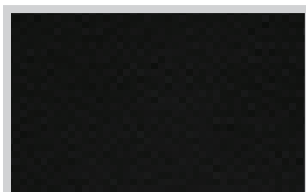


Audi exclusive leather trim from quattro GmbH

### S line seats



Speed cloth/leather, black QE

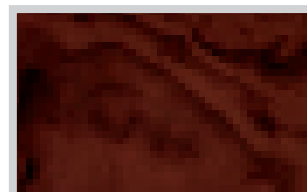


Volterra leather, black QE

### SE inlays



Radial aluminium 5TD



Walnut brown 5MG



Fine-grain Birch wood, beige 7TC

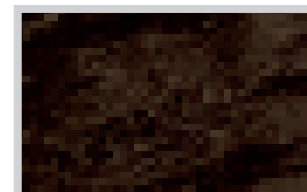


Walnut mid-brown, silk matt 5MS

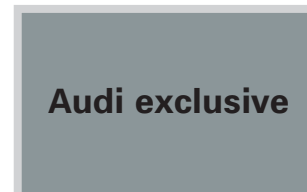
### S line inlays



Matt brushed aluminium 5TG



Fine-grain Birch wood, grey 5TZ



Audi exclusive leather trim from quattro GmbH

## Additional upholstery options

	2.0 TDI/2.0 TFSI	2.4/2.4 quattro/ 2.8 FSI	2.7 TDI/ 2.7 TDI quattro	3.2 FSI/ 3.2 FSI quattro	3.0 TDI quattro	4.2 quattro	S6 quattro	Basic RRP	Total RRP inc. VAT
<b>Leather/Alcantara combination.</b> Head restraints, seat-side facings and front centre armrest in leather. Seat centres and door inserts in Alcantara (must be combined with Sports seats and split-folding rear seats)	•	•	•	•	•	N	S	£765.96	£900.00
<b>Leather – Volterra,</b> for seat covers, head restraints, door inserts and front centre armrest (with S line embossing on S line models)	•	•	•	•	•	S	-	£1,063.83	£1,250.00
S line models	•	•	•	•	•	-	-	£829.79	£975.00
<b>Leather – Natural,</b> for seat covers, head restraints, door inserts and front centre armrest (not available on Sports seats)	•	•	•	•	•	-	-	£1,617.02	£1,900.00
	-	-	-	-	-	•	-	£553.19	£650.00
<b>Leather – Silk Nappa,</b> for seat covers, head restraints, door inserts and front centre armrest	-	-	-	-	-	-	•	£297.87	£350.00
<b>Leather – Valcona,</b> for seat covers, head restraints, door inserts and front centre armrest. Must be combined with heated front seats (S6 in combination with standard A6 seats only)	•	•	•	•	•	-	-	£1,382.98	£1,625.00
(with S line embossing on S line models)	-	-	-	-	-	•	-	£319.15	£375.00
S line models	•	•	•	•	•	-	•	£617.02	£725.00
	-	-	-	-	-	-	-	£1,148.94	£1,350.00
<b>Mondial cloth</b>	•	•	•	•	•	N	-	£106.38	£125.00





## Audi A6 model premiums

	2.0 TDI/2.0 TFSI	2.4/2.4 quattro/ 2.8 FSI	2.7 TDI/ 2.7 TDI quattro	3.2 FSI/ 3.2 FSI quattro	3.0 TDI quattro	4.2 quattro	S6 quattro	Basic RRP	Total RRP inc. VAT
<b>S line package</b>	•	-	-	-	-	-	-	£2,587.23	£3,040.00
• 8J x 18 '5-arm' design alloy wheels with 245/40 R18 Y tyres	•	•	•	•	•	•	•	£2,459.57	£2,890.00
• Black cloth headlining	-	-	-	-	-	•	-	£1,514.89	£1,780.00
• Enhanced brake system (3.2 FSI and 3.0 TDI only)	-	-	-	-	-	-	-		
• Front Sports seats with S line logo, including electrically adjustable lumbar support for both front seats	-	-	-	-	-	-	-		
• Gear knob in perforated leather	-	-	-	-	-	-	-		
• Headlight washers	-	-	-	-	-	-	-		
• Leather covered 3-spoke S line multi-function steering wheel (with paddle-shift gear-change for automatic models)	-	-	-	-	-	-	-		
• Matt-brushed aluminium fascia and door trims	-	-	-	-	-	-	-		
• Radiator grille in S line design	-	-	-	-	-	-	-		
• Seat upholstery with seat-side sections in black leather and seat-centre section in black Speed cloth	-	-	-	-	-	-	-		
• S line badge (front grille and side wing)	-	-	-	-	-	-	-		
• S line body styling (front bumper and rear diffuser in sports design)	-	-	-	-	-	-	-		
• S line Sports suspension	-	-	-	-	-	-	-		

## Packages

<b>Communication Pack 1</b>									
• CD-ROM Satellite Navigation system	-	•	•	•	•	•	-	£1,148.94	£1,350.00
• CD changer	-	•	•	•	•	•	-		
• GSM mobile-phone preparation	-	•	•	•	•	•	-		
<b>Communication Pack 2</b>									
• DVD Satellite Navigation system	-	•	•	•	•	•	-	£1,574.47	£1,850.00
• CD changer	-	•	•	•	•	•	-		
• MMI High	-	•	•	•	•	•	-		
• GSM mobile-phone preparation	-	•	•	•	•	•	-		
<b>Visibility Pack</b>									
• Adaptive lights									
• Xenon headlights									
• Headlight washers									
	SE models	•	•	•	•	•	-	£723.40	£850.00
	S line models	•	•	•	•	•	-	£510.64	£600.00



# Packages

		2.0 TDI/2.0 TFSI	2.4/2.4 quattro/ 2.8 FSI	2.7 TDI/ 2.7 TDI quattro	3.2 FSI/ 3.2 FSI quattro	3.0 TDI quattro	4.2 quattro	S6 quattro	Basic RRP	Total RRP inc. VAT
<b>A6 Audi exclusive line</b>		SE models	•	•	•	•	•	•	£2,382.98	£2,800.00
		S line models	•	•	•	•	•	•	£1,531.91	£1,800.00
		SE models	-	-	-	-	-	-	£1,957.45	£2,300.00
		S line models	-	-	-	-	•	-	£1,106.38	£1,300.00
	• Two-tone Valcona leather seats. Black seat-side sections with coloured seat-centre section in Magnolia white, silver or Cognac									
	• Black dashboard									
	• Black cloth headlining and black carpets									
	• Door-trim inserts in black to match interior trim									
	• Audi exclusive door-sill trims									
	• Matt-brushed aluminium inlays									
	• Floor mats in black with coloured piping (to match seat-centre section)									
	• 4-spoke leather multi-function steering wheel on SE and S line models (gear-change paddles are deleted on automatic models)									
	• Steering wheel rim, gear knob and gear lever gaiter with coloured stitching (to match seat-centre section)									
<b>Luxury Pack</b>										
	• Leather upholstery (available in all applicable colours on SE models, black only on S line)									
	• Heated front seats (front and rear on 4.2 quattro)									
	• Rear acoustic-parking system									
	• Interior lighting package									
	• <b>Silk Nappa leather</b>	S6 models	-	-	-	-	-	•	£297.87	£350.00
	• <b>Volterra leather</b>	SE models	-	•	•	•	•	N	£1,063.83	£1,250.00
		S line models	-	•	•	•	•/S*	N	£829.79	£975.00
	• <b>Valcona leather</b>		-	•	•	•	-	-	£1,382.98	£1,625.00
			-	-	-	-	•	-	£319.15	£375.00
	• <b>Audi exclusive line – Valcona leather</b>	S6 models	-	-	-	-	-	•	£617.02	£725.00
		SE models	-	•	•	•	•	-	£2,382.98	£2,800.00
		S line models	-	•	•	•	•	-	£1,957.45	£2,300.00
		SE models	-	-	-	-	-	•	£1,531.91	£1,800.00
		S line models	-	-	-	-	•	-	£1,106.38	£1,300.00

Options are subject to availability and may extend delivery.

- = Not available

• = Available

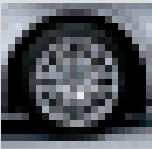





S = Standard

N = No charge


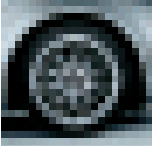



\* = Standard on Le Mans Edition

RRP – Recommended Retail Price.

## Wheels, tyres and suspension

	2.0 TDI/2.0 TFSI	2.4/2.4 quattro/ 2.8 FSI	2.7 TDI/ 2.7 TDI quattro	3.2 FSI/ 3.2 FSI quattro	3.0 TDI quattro	4.2 quattro	S6 quattro	Basic RRP	Total RRP inc. VAT
 <b>7.5J x 17 '16-spoke' design alloy wheels</b> with 225/50 R17 Y tyres (not available on S line models)	N	N	N	N	N	S	-	No charge	
 <b>7.5J x 17 '9-spoke Star' design alloy wheels</b> with 225/50 R17 Y tyres (not available on S line models)	• -	• -	• -	• -	• -	- •	- -	No charge £148.94	£175.00
 <b>8J x 17 '15-spoke' design alloy wheels</b> with 245/45 R17 Y tyres (not available on S line models)	• -	• -	• -	• -	• -	- •	- -	£148.94 £297.87	£175.00 £350.00
 <b>8J x 18 '7-arm' design alloy wheels</b> with 245/40 R18 Y tyres (not available on S line models)	• -	• -	• -	• -	• -	- •	- -	£404.26 £553.19	£475.00 £650.00
 <b>8J x 18 '12-spoke' design alloy wheels</b> with 245/40 R18 Y tyres (not available on S line models)	• -	• -	• -	• -	• -	- •	- -	£617.02 £765.96	£725.00 £900.00
 <b>8J x 18 '5-arm' design alloy wheels</b> with 245/40 R18 Y tyres (standard on S line models)	• -	• -	• -	• -	• -	- •	- -	£702.13 £851.06	£825.00 £1,000.00

## Wheels, tyres and suspension

	2.0 TDI/2.0 TFSI	2.4/2.4 quattro/ 2.8 FSI	2.7 TDI/ 2.7 TDI quattro	3.2 FSI/ 3.2 FSI quattro	3.0 TDI quattro	4.2 quattro	S6 quattro	Basic RRP	Total RRP inc. VAT
 <b>8J x 18 '14-spoke' design alloy wheels</b> with 245/40 R18 Y tyres	•	•	•	•	•	-	-	£702.13	£825.00
	-	-	-	-	-	•	-	£851.06	£1,000.00
S line models	•	•	•	•	•	•	-	No charge	
 <b>8.5J x 19 '20-spoke' design alloy wheels</b> with 255/35 R19 Y tyres (only available on S line models)	•	•	•	•	•	•	-	£382.98	£450.00
 <b>9J x 19 5-arm 'wing' design alloy wheels</b> with 265/35 R19 Y tyres	-	-	-	-	-	-	S	Standard on S6	
 <b>8.5J x 18 'S' design alloy wheels</b> with 255/40 R18 Y tyres	-	-	-	-	-	-	N	No charge	
 <b>8.5J x 19 '7-arm double-spoke' alloy wheels</b> with 255/35 R19 tyres	-	-	-	-	S	-	-	Standard on Le Mans Edition	
<b>Adaptive air suspension.</b> Electronically-controlled pneumatic shock-absorption with four modes (automatic, comfort, dynamic, lift) selected via MMI. Includes automatic level-regulation (not available on S line or S6 models) (must be combined with Split-folding rear seat on non-quattro Saloon models)	-	•	•	•	•	•	-	£1,276.60	£1,500.00
<b>Sports suspension.</b> 20mm lower ride height with stiffened damper and spring rates and additional front and rear anti-roll bars (not available on S line models)	•	•	•	•	•	•	-	£255.32	£300.00
<b>Tyre-pressure monitor.</b> Continuous monitoring of tyre pressure with visual and audible warnings for each wheel	•	•	•	•	•	•	•	£340.43	£400.00

Options are subject to availability and may extend delivery.

- = Not available

• = Available

S = Standard

N = No charge

RRP – Recommended Retail Price.

## Audio and communication

	2.0 TDI/2.0 TFSI	2.4/2.4 quattro/ 2.8 TFSI	2.7 TDI/ 2.7 TDI quattro	3.2 FSI/ 3.2 FSI quattro	3.0 TDI quattro	4.2 quattro	S6 quattro	Basic RRP	Total RRP inc. VAT
<b>BOSE surround sound.</b> 5-channel surround sound reproduction with dynamic vehicle-noise compensation, 8-channel amplifier, 13 loudspeakers inc. centre speaker in dashboard and two surround loudspeakers in rear parcel shelf, 270 Watt total output	.	.	.	.	.	.	.	£489.36	£575.00
<b>CD changer</b> located in glovebox, in lieu of CD player (only in combination with MMI)	s	.	.	.	.	.	.	£272.34	£320.00
<b>DAB Digital Radio module.</b> Digital Audio Broadcasting reception with Data Services function to show programme information with outstanding sound clarity and increased station availability (only in combination with MMI High)	.	.	.	.	.	.	.	£293.62	£345.00
<b>GSM mobile-telephone preparation,</b> with hands-free and speech dialogue system for operation of main functions, located in front centre armrest. Bluetooth interface and roof-mounted aerial are included for optimum reception (a phone adaptor is required at extra cost. Please consult your Audi Centre for details)	.	.	.	.	.	.	.	£340.43	£400.00
<b>Generation 2 mobile-phone cradles</b> (applicable for factory-fitted mobile-telephone preparation only). Please consult your Audi Centre for cradle range	.	.	.	.	.	.	.	£85.11	£100.00
<b>MMI High.</b> As MMI with 7" high-resolution TFT colour display and CD changer (in lieu of CD player)	.	.	.	.	.	.	s	£404.26	£475.00
<b>Satellite Navigation system – CD-ROM based.</b> Route planning and guidance using voice and pictogram instructions. Includes UK CD-ROM disc and CD changer in lieu of CD player (only in combination with MMI)	s	.	.	.	.	.	-	£1,063.83	£1,250.00
<b>Satellite Navigation system – DVD based,</b> integrated in the MMI High. Large data storage capacity, high-speed system with European TMC-enabled DVD and colour DIS display, GPS aerial concealed in the rear window frame on Saloon and on roof panel on Avant (includes MMI High and CD changer in lieu of CD player)	.	-	-	-	-	-	s	£425.53	£500.00
	-	.	.	.	.	.	-	£1,489.36	£1,750.00
<b>TV reception, analogue and digital,</b> for improved reception of 'free-to-air' TV channels. Picture reception only possible when the vehicle is stationary, sound reception at all times (only in combination with MMI High)	.	.	.	.	.	.	.	£680.85	£800.00
<b>Voice Control System,</b> for most important basic functions of DVD Navigation system, TV tuner, radio system, CD changer and car telephone (where fitted) (only in combination with MMI High)	.	.	.	.	.	.	.	£276.60	£325.00
<b>Bluetooth mobile phone connection,</b> operated via the optional MMI High system and integrated telephone voice-control system, including roof-mounted aerial for optimal reception. Must be combined with MMI High (price quoted does not include this item). Please note that your mobile phone must have Bluetooth SIM-Access Profile facility	.	.	.	.	.	.	.	£553.19	£650.00
<b>Audi Music Interface:</b> universal connection for use with stereo audio sources and Apple iPod (generation 4 onwards iPod, iPod mini, iPod nano, iPod photo, iPod video). Provides intuitive control of an iPod through the MMI and multi-function steering wheel. It also replicates the iPod display on the MMI screen, including track titles. The interface provides power for an iPod as well as a convenient rubber-lined storage tray (only in combination with MMI High. An adapter cable is required at additional cost. Please consult your Audi Centre for details)	.	.	.	.	.	.	.	£170.21	£200.00
<b>Bluetooth Mobile Phone Connection with Privacy Handset.</b> As Bluetooth Mobile Phone Connection, with additional cordless Privacy Handset. The handset allows passengers to make private calls, provides remote control of the telephone functions as well as convenient SMS text messaging function. The handset is charged from a docking station integrated into the front centre armrest (included)	.	.	.	.	.	.	.	£808.15	£950.00

## Seats

	2.0 TDI/2.0 TFSI	2.4/2.4 quattro/ 2.8 FSI	2.7 TDI/ 2.7 TDI quattro	3.2 FSI/ 3.2 FSI quattro	3.0 TDI quattro	4.2 quattro	S6 quattro	Basic RRP	Total RRP inc. VAT
<b>Electrically adjustable front seats</b> , with adjustment for height, forwards and backwards position, backrest angle and lumbar support	*	*	*	*	*	S	S	£638.30	£750.00
<b>Electrically adjustable front seats, driver's side with memory</b> . Also includes auto-dimming and folding door mirrors with memory, memory for electrically adjusted steering column (if fitted) and auto-dimming rear view mirror	*	*	*	*	*	-	-	£1,148.94	£1,350.00
<b>Electrically adjustable front seats with memory</b> , as above with memory for driver's and front passenger's seat	*	*	*	*	*	-	-	£510.64	£600.00
<b>Electrically adjustable front seats with memory</b> , as above with memory for driver's and front passenger's seat	*	*	*	*	*	-	-	£1,276.68	£1,500.00
<b>Electrically adjustable front seats with memory</b> , as above with memory for driver's and front passenger's seat	-	-	-	-	-	*	*	£638.30	£750.00
<b>Electric lumbar support</b> , for driver's and front passenger's seat, with electric horizontal and vertical lumbar adjustment (standard on S line models, Sports seats and electric front seats)	*	*	*	*	*	S	S	£170.21	£200.00
<b>Heated front seats</b> , individually controlled with variable temperature adjustment	*	*	*	*	*	S	*	£212.77	£250.00
<b>Heated front and outer rear seats</b> , individually controlled with variable temperature adjustment	*	*	*	*	*	-	*	£425.53	£500.00
<b>Heated front and outer rear seats</b> , individually controlled with variable temperature adjustment	-	-	-	-	-	*	-	£212.77	£250.00
<b>Split-folding rear seat</b> with 60/40 split. Can be locked for added security (standard on quattro and Avant models)	*	*/s	*/s	*	S	S	S	£212.77	£250.00
<b>Sports seats</b> , front, with pronounced side bolsters for increased side support. Forwards and backwards position, seat height, inclination and backrest angle manually adjustable with manually adjustable thigh support and electric lumbar support. Upholstered in Mistral cloth. 4.2 quattro models include leather upholstery and electric front seats	*	*	*	*	*	-	-	£382.98	£450.00
<b>Sports seats</b> , front, with pronounced side bolsters for increased side support. Forwards and backwards position, seat height, inclination and backrest angle manually adjustable with manually adjustable thigh support and electric lumbar support. Upholstered in Mistral cloth. 4.2 quattro models include leather upholstery and electric front seats	-	-	-	-	-	*	-	£212.77	£250.00
<b>Sports seats, electrically adjustable</b> . As above, with additional electric adjustment for height, forwards and backwards position and backrest angle	*	*	*	*	*	-	-	£893.62	£1,050.00
<b>Sports seats, electrically adjustable</b> . As above, with additional electric adjustment for height, forwards and backwards position and backrest angle	S line models	*	*	*	*	-	-	£510.64	£600.00
<b>Sports seats, electrically adjustable, driver's side with memory</b> . As above, with memory for driver's seat. Also includes auto-dimming and folding door mirrors with memory, memory for electrically adjusted steering column (if fitted) and auto-dimming rear view mirror	*	*	*	*	*	-	-	£1,404.26	£1,650.00
<b>Sports seats, electrically adjustable, driver's side with memory</b> . As above, with memory for driver's seat. Also includes auto-dimming and folding door mirrors with memory, memory for electrically adjusted steering column (if fitted) and auto-dimming rear view mirror	S line models	-	-	-	-	*	-	£765.96	£900.00
<b>Sports seats, electrically adjustable, driver's side with memory</b> . As above, with memory for driver's seat. Also includes auto-dimming and folding door mirrors with memory, memory for electrically adjusted steering column (if fitted) and auto-dimming rear view mirror	S line models	*	*	*	*	-	-	£1,063.83	£1,250.00
<b>Sports seats, electrically adjustable, driver's side with memory</b> . As above, with memory for driver's seat. Also includes auto-dimming and folding door mirrors with memory, memory for electrically adjusted steering column (if fitted) and auto-dimming rear view mirror	S line models	-	-	-	-	*	-	£553.19	£650.00
<b>Sports seats, electrically adjustable, with memory</b> . As above with memory for both front seats	*	*	*	*	*	-	-	£1,531.91	£1,800.00
<b>Sports seats, electrically adjustable, with memory</b> . As above with memory for both front seats	S line models	-	-	-	-	*	-	£893.62	£1,050.00
<b>Sports seats, electrically adjustable, with memory</b> . As above with memory for both front seats	S line models	*	*	*	*	-	-	£1,191.49	£1,400.00
<b>Sports seats, electrically adjustable, with memory</b> . As above with memory for both front seats	S line models	-	-	-	-	*	-	£680.85	£800.00
<b>Through-load facility with removable ski bag</b> for transporting long objects (only in combination with split-folding rear seat)	*	*	*	*	*	*	*	£136.17	£160.00

## Safety and security

	2.0 TDI/2.0 TFSI	2.4/2.4 quattro/ 2.8 FSI	2.7 TDI/ 2.7 TDI quattro	3.2 FSI/ 3.2 FSI quattro	3.0 TDI quattro	4.2 quattro	S6 quattro	Basic RRP	Total RRP inc. VAT
<b>Acoustic and optical parking system</b> (front and rear) with display on MMI screen	.	.	.	.	.	.	.	£489.36	£575.00
<b>Acoustic parking system</b> (rear)	.	.	.	.	.	.	.	£255.32	£300.00
<b>Adaptive lights</b> , including Xenon Plus: 'dynamic light' with swivelling headlights for improved illumination of a winding road. The headlights swivel into bends from a speed of approx. 12 mph	.	.	.	.	.	.	.	£936.17	£1,100.00
	.	.	.	.	.	.	.	£276.60	£325.00
S line models	.	.	.	.	.	.	.	£744.68	£875.00
<b>Audi Parking System Advanced</b> , aids car parking by indicating the distance to obstacles in front of and behind the car, providing a visual image of the area behind the vehicle on the MMI display. Includes guiding lines. Measured by ultrasonic sensors and camera integrated discreetly in the boot handle (only in combination with MMI High and Split-folding rear seat)	.	.	.	.	.	.	.	£808.51	£950.00
<b>Auto-dimming rear view mirror</b>	.	.	.	.	.	.	.	£102.13	£120.00
<b>Door mirrors – Folding and auto-dimming</b> , including auto-dimming rear view mirror	.	.	.	.	.	.	.	£306.38	£360.00
<b>Door mirrors – Folding</b>	.	.	.	.	.	.	.	£102.13	£120.00
<b>First-aid kit</b> , located in rear centre armrest	.	.	.	.	.	.	.	£17.02	£20.00
<b>Headlight washers</b> (standard with Adaptive lights and Xenon Plus)	.	.	.	.	.	S	S	£212.77	£250.00
<b>Privacy glass</b> . Dark-tinted glass from B-pillar backwards including rear screen (not in combination with Twin-pane heat and UV insulating glass)	.	.	.	.	.	.	.	£276.60	£325.00
<b>Rear side airbags</b> , situated in side of rear seats	.	.	.	.	.	.	.	£212.77	£250.00
<b>Xenon Plus</b> (main beam and dipped headlights), including headlight-washers, automatic range-adjustment, low-consumption daytime-driving lights and LED rear brake lights	.	.	.	.	.	S	S	£659.57	£775.00
S line models	.	.	.	.	.	.	.	£468.09	£550.00

## Steering wheels

	2.0 TDI/2.0 TFSI	2.4/2.4 quattro/ 2.8 FSI	2.7 TDI/ 2.7 TDI quattro	3.2 FSI/ 3.2 FSI quattro	3.0 TDI quattro	4.2 quattro	S6 quattro	Basic RRP	Total RRP inc. VAT
<b>Electrically adjustable steering column</b> , with adjustment for height, reach and easy-exit function	•	•	•	•	•	•	•	£255.32	£300.00
<b>Steering wheel heating</b> , available on 4-spoke steering wheels only, controlled with wheel-mounted on/off switch (includes gear change paddles on automatic models)	•	•	•	•	•	•	•	£136.17	£160.00
<b>3-spoke multi-function Sports type</b> , in partly perforated leather (fully perforated on S line models)	•	•	•	•	•	•	-	£68.09	£80.00
S line models	s	s	s	s	s	s	-	No charge	
<b>3-spoke multi-function Sports type with gear-change controls</b> , in partly perforated leather (fully perforated on S line models) (only available on automatic models)	•	•	•	•	•	•	-	£68.09	£80.00
S line models	s	s	s	s	s	s	-	No charge	
<b>Wooden 3-spoke multi-function Sports type</b> (only in combination with wooden gearknob and matching wooden fascia trim. Not available on S line models)	•	•	•	•	•	•	-	£204.25	£240.00
<b>Wooden 3-spoke multi-function Sports type with gear-change controls</b> (only available on automatic models in combination with wooden gearknob and matching wooden fascia trim. Not available on S line models)	•	•	•	•	•	•	-	£289.36	£340.00

## Interior equipment

	2.0 TDI/2.0 TFSI	2.4/2.4 quattro/ 2.8 FSI	2.7 TDI/ 2.7 TDI quattro	3.2 FSI/ 3.2 FSI quattro	3.0 TDI quattro	4.2 quattro	S6 quattro	Basic RRP	Total RRP inc. VAT
<b>80-litre fuel tank</b> (standard on quattro models)	.	./S	./S	./S	S	S	S	£63.83	£75.00
<b>Adaptive cruise control.</b> Automatic distance-regulation, using radar sensors to maintain required distance by braking and accelerating. Four programs (distance 1 to distance 4) set via steering column controls of the cruise control system. Includes colour DIS display (only available on automatic models)	.	.	.	.	.	.	.	£1,234.04	£1,450.00
<b>Advanced key.</b> Access and authorisation system by means of automatic exchange of data between car and key. Includes engine start/stop button and locking buttons on top of door handles (available on automatic models only)	.	.	.	.	.	.	.	£680.85	£800.00
<b>Aluminium gear knob</b> (available on manual S line models only)	.	.	.	.	.	-	-	£55.32	£65.00
<b>Colour Driver's Information System (DIS) display.</b> High-resolution colour display in instrument binnacle	.	.	.	.	.	.	S	£106.38	£125.00
<b>Fascia trim – Fine-grain Birch wood beige</b> on fascia, centre console and door cappings (not available on S line models)	.	.	.	.	.	N	-	£297.87	£350.00
<b>Fascia trim – Fine-grain Birch wood grey</b> on fascia, centre console and door cappings (only available on S line models)	.	.	.	.	.	N	N	£297.87	£350.00
<b>Fascia trim – Walnut brown</b> on fascia, centre console and door cappings (not available on S line models)	.	.	.	.	.	S	-	£297.87	£350.00
<b>Fascia trim – Matt-brushed aluminium</b> on fascia, centre console and door cappings	-	-	-	-	-	-	N	No charge	
<b>Fascia trim – Walnut mid-brown silk matt</b> on fascia, centre console and door cappings (not on S line models)	.	.	.	.	.	-	-	£382.98	£450.00
	-	-	-	-	-	.	.	£85.11	£100.00
<b>Garage door opener (HomeLink®)**.</b> Programmable radio-operated remote control buttons integrated in the roof module at the front	.	.	.	.	.	.	.	£144.68	£170.00



## Interior equipment

	2.0 TDI/2.0 TFSI	2.4/2.4 quattro/ 2.8 FSI	2.7 TDI/ 2.7 TDI quattro	3.2 FSI/ 3.2 FSI quattro	3.0 TDI quattro	4.2 quattro	S6 quattro	Basic RRP	Total RRP inc. VAT
<b>Headlining in black cloth</b> (standard on S line models)	.	.	.	.	.	.	s	£170.21	£200.00
<b>Interior lighting package</b> illuminates the door storage compartments, the floor area and the inside door handles with LED technology. Indirect illumination of the door trims	.	.	.	.	.	.	s	£170.21	£200.00
<b>Load-area cycle rack.</b> Includes holder for 2 bicycles with up to 26" wheels, elasticated holding straps and 2 storage bags for front wheels (Avant models only) (spare wheel deleted with this option and replaced with Tyre Mobility Kit)	.	.	.	.	.	.	.	£93.62	£110.00
<b>Load-area fixing kit,</b> with telescopic bar and securing belt for dividing up luggage compartment (Avant models only)	.	.	.	.	.	.	.	£106.38	£125.00
<b>Load-area lockable side compartment.</b> Storage compartment cover to right of luggage area, lockable with vehicle key (Avant models only)	.	.	.	.	.	.	.	£34.04	£40.00
<b>Load-area storage box.</b> Large-capacity open storage box with fixings to secure to load area concept (Avant models only)	.	.	.	.	.	.	.	£72.34	£85.00
<b>Luggage compartment package,</b> comprising tie-down straps and 12V socket (standard on Avant models) (must be combined with split-folding rear seat)	.	.	.	.	.	.	.	£63.83	£75.00
<b>Rear window blind, electric</b> (Saloon models only)	.	.	.	.	.	.	.	£191.49	£225.00
<b>Rear window blind, electric,</b> with manual side blinds (Saloon models only)	.	.	.	.	.	.	.	£276.60	£325.00
<b>Rear window blind, manual</b> (Avant models only)	.	.	.	.	.	.	.	£85.11	£100.00
<b>Rear window blind, manual,</b> with manual side blinds (Avant models only)	.	.	.	.	.	.	.	£170.21	£200.00
<b>Reversible mat for luggage compartment,</b> one side in rubber and the other in fabric. Covers whole load-area floor, even when rear seats are folded down (must be combined with split-folding rear seat)	.	.	.	.	.	.	.	£63.83	£75.00
<b>Storage Pack,</b> comprising luggage nets on back of front seats and in passenger footwell, storage compartment under front seats and two drinks holders in rear armrest. Also includes luggage compartment net on Avant models (must be combined with split-folding rear seat)	.	.	.	.	.	.	s	£72.34	£85.00
<b>Wooden gearknob</b> (must be combined with matching fascia trim)	.	.	.	.	.	.	.	£72.34	£85.00

## Exterior equipment

	2.0 TDI/2.0 TFSI	2.4/2.4 quattro/ 2.8 FSI	2.7 TDI/ 2.7 TDI quattro	3.2 FSI/ 3.2 FSI quattro	3.0 TDI quattro	4.2 quattro	S6 quattro	Basic RRP	Total RRP inc. VAT
<b>Automatically actuated boot lid.</b> Opens the boot electrically via a radio-operated remote car key, button in the driver's door or the soft-touch button in the boot-lid recess. Boot is closed by pressing the button on the inside of the boot lid (Avant models only)	.	.	.	.	.	.	.	£340.43	£400.00
<b>Automatically opening boot lid.</b> When the luggage compartment is unlocked, the lid automatically opens to make loading easier (Saloon models only)	.	.	.	.	.	.	.	£25.53	£30.00
<b>Electric slide-and-tilt glass sunroof</b> with position pre-selection, tinted glass insert, variable sunshield and convenient closing	.	.	.	.	.	.	.	£723.40	£850.00
<b>Electric slide-and-tilt solar-panel sunroof</b> with position pre-selection. Uses the sun's energy to supply a constant flow of air, via the air-conditioning fan, reducing the temperature inside a parked car	.	.	.	.	.	.	.	£1,000.00	£1,175.00
<b>Deletion of model and capacity designation at rear</b>	.	.	.	.	.	.	-	No charge	
<b>Deletion of capacity designation at rear</b>	.	.	.	.	.	.	-	No charge	
<b>Power door – closure.</b> Electrically operated power doors with soft-close feature	.	.	.	.	.	.	.	£361.70	£425.00
<b>Roof bars, black</b> (Avant models only)	.	.	.	.	.	.	.	No charge	
<b>Roof bars, deleted</b> (Avant models only)	.	.	.	.	.	.	.	No charge	
<b>Towing equipment:</b> Mechanically swivelling ball head, operated via handwheel in luggage compartment, with control lights on handwheel and display in instrument panel for monitoring secure locking of towing equipment. 13-pole socket is also swivelled out of view behind the rear bumper (factory-fitted towbars usually require a 13-to 7-pin adapter. Please consult your Audi Centre regarding application)	.	.	.	.	.	.	.	£595.74	£700.00
<b>Twin-pane heat and UV insulating glass,</b> reflective layer reduces interior heat buildup and provides additional break-in protection (not available on 2.0 TDI models) (not in combination with Privacy glass)	.	.	.	.	.	.	.	£723.40	£850.00



# Colour and trim guide

## Standard seats – Interior trim colours:

Order code	Upholstery	Carpet	Dashboard	Headlining	Meridian cloth	Mondial cloth	Volterra leather	Valcona leather	Natural leather
NK	Black	Black	Black/Black	Silver	•	-	•	•	•
NL	Cream beige	Black	Black/Black	Cream beige	-	-	-	•	-
NM	Amaretto brown	Black	Black/Black	Silver	-	-	•	•	-
MF	Deep blue	Deep blue	Deep blue/Deep blue	Silver	•	•	•	-	-
NQ	Light grey	Light grey	Graphite grey/Light grey	Silver	•	•	•	•	-
MC	Cardamom beige	Cardamom beige	Tan beige/Cardamom beige	Cardamom beige	-	•	•	•	•

## Sports seats – Interior trim colours:

Order code	Upholstery	Carpet	Dashboard	Headlining	Mistral cloth	Alcantara/leather	Volterra leather	Valcona leather
NK	Black	Black	Black/Black	Silver	•	•	•	•
NL	Cream beige	Black	Black/Black	Cream beige	-	-	-	•
NM	Amaretto brown	Black	Black/Black	Silver	-	-	•	•
MF	Deep blue	Deep blue	Deep blue/Deep blue	Silver	-	-	•	-
NQ	Light grey	Light grey	Graphite grey/Light grey	Silver	•	•	•	•
MC	Cardamom beige	Cardamom beige	Tan beige/Cardamom beige	Cardamom beige	-	•	•	•

# Colour and trim guide

## S line seats – Interior trim colours:

Order code	Upholstery	Carpet	Dashboard	Headlining	Speed cloth and leather	Volterra leather	Valcona leather
QE	Black	Black	Black/Black	Black	.	.	.

## S6 seats – Interior trim colours:

Order code	Upholstery	Carpet	Dashboard	Headlining	Seatbelts	Alcantara leather	Valcona leather**	Silk Nappa leather
ZM	Black	Black	Black/Black	Black/Black	Black	.	.	.
ZQ	Silver	Black	Black/Black	Silver/Black	Silver	.	.	.

## Fascia and door cappings:

Order code	Description	NK	NL	NM	MF	NQ	MC	QE	ZM	ZQ
5TD	Aluminium, Radial design (Graphite)	S	S	S	S	S	S	-	-	-
5TG	Matt-brushed aluminium	-	-	-	-	-	-	S	.	.
5MK	Carbon Atlas	-	-	-	-	-	-	-	S	S
5MG*	Walnut, brown	.	.	.	.	.	.	-	-	-
5TZ*	Fine-grain Birch wood, grey	-	-	-	-	-	-	.	.	.
5MS*	Walnut mid-brown silk matt	.	.	.	.	.	.	-	.	.
7TC*	Fine-grain Birch wood, beige	.	.	.	.	.	.	-	-	-

Options are subject to availability and may extend delivery.

- = Not available

. = Available

S = Standard

\* = Cost option

\* Additional charge for this upholstery/trim/paintwork.

\*\*Only in combination with standard A6 seats.

Please note: the above are recommended combinations only. If customers request another combination, this can be accommodated but may extend delivery time.

# Colour and trim guide

## Recommended paintwork and interior trim combinations:

Order code	Paint No.	Exterior Colour	NK	NL	NM	MF	NQ	MC	QE	ZM	ZQ
A2A2	Y9B	Brilliant black	.	.	.	-	.	.	.	.	.
E8E8	Y5K	Brilliant blue	.	.	-	.	-	.	.	-	-
C8C8	Y3J	Brilliant red	-	-	-	-	-	-	-	.	.
G9G9*	Y5R	Aero blue, metallic	.	.	-	.	.	.	.	-	-
2S2S*	Y7H	Akoya silver, metallic	.	.	-	.	-	-	.	-	-
9X9X*	Y1Q	Dakar beige, metallic	.	.	-	.	-	.	.	-	-
X1X1*	Z7Q	Oyster grey, metallic	.	.	.	.	.	.	.	-	-
5B5B*	Y7W	Silver, metallic	.	-	.	.	.	-	.	.	.
9U9U*	Z7R	Aurora blue, pearl effect	.	.	.	-	.	.	.	.	.
6P6P*	Z3G	Canyon red, pearl effect	.	.	-	.	.	.	.	-	-
3W3W*	Z6E	Deep green, pearl effect	.	.	.	.	.	.	.	.	.
L8L8*	Z9Y	Phantom black, pearl effect	.	.	.	-	.	.	.	.	.
7X7X*	Z5D	Night blue, pearl effect	.	.	-	.	-	.	.	.	.
X4X4*	Z5B	Stratos blue, pearl effect	.	.	.	.	.	.	.	.	.
C2C2*	Y7J	Avus silver, pearl effect	-	-	-	-	-	-	.	-	-
N9N9*	Z3M	Misano red, pearl effect	-	-	-	-	-	-	.	-	-
6V6V*	N7S	Daytona grey, pearl effect	-	-	-	-	-	-	.	-	-
Q4Q4*	YZG	Quartz grey, metallic	.	.	.	-	.	.	.	.	.
5N5N*	Z5F	Sprint blue, pearl effect	-	-	-	-	-	-	-	.	.



# Audi Centre Fitted Accessory Packs

	2.0 TDI	2.4/2.8 FSI	2.7 TDI	3.2 FSI	3.0 TDI	4.2 quattro	S6 quattro	Basic RRP	Total RRP inc. VAT*
<b>Protection Pack</b> <ul style="list-style-type: none"> <li>· Front mudflaps</li> <li>· Rear mudflaps</li> <li>· Front rubber mats</li> <li>· Rear rubber mats</li> <li>· Bumper protection film</li> </ul>	.	.	.	.	.	.	.		£295.00
<b>Premium Protection Pack</b> <ul style="list-style-type: none"> <li>· Front mudflaps</li> <li>· Rear mudflaps</li> <li>· Front rubber mats</li> <li>· Rear rubber mats</li> <li>· Bumper protection film</li> <li>· Headlight protectors</li> <li>· Flexible load-liner</li> </ul>	.	.	.	.	.	.	.		£375.00
<b>Heavy-Duty Protection Pack (Avant only)</b> <ul style="list-style-type: none"> <li>· Front mudflaps</li> <li>· Rear mudflaps</li> <li>· Front rubber mats</li> <li>· Rear rubber mats</li> <li>· Bumper protection film</li> <li>· Headlight protectors</li> <li>· Rigid load-liner</li> </ul>	.	.	.	.	.	.	.		£515.00
<b>Family Pack</b> <ul style="list-style-type: none"> <li>· Child seat (9 months – 12 years)</li> <li>· Storage bag</li> </ul>	.	.	.	.	.	.	.		£255.00
<b>Touring Pack</b> <ul style="list-style-type: none"> <li>· Roof bars</li> <li>· Mini-bar</li> <li>· Storage bag</li> <li>· First-aid kit</li> </ul>	.	.	.	.	.	.	.		£325.00
<b>Security</b> <ul style="list-style-type: none"> <li>· Tracker monitor**</li> </ul>	.	.	.	.	.	.	.		£385.00
<b>Road Angel</b> <ul style="list-style-type: none"> <li>· Road Angel Plus</li> </ul>	.	.	.	.	.	.	.		£300.00
<b>DVD Rear Seat Entertainment</b> <ul style="list-style-type: none"> <li>· 7" DVD screen (not available for vehicles with sunroof)</li> </ul>	.	.	.	.	.	.	.		£735.00

RRP – Recommended Retail Price.

\*Price includes fitting.

\*\*Excludes subscription.





## CO<sub>2</sub> data and information

### CO<sub>2</sub> emissions-based Vehicle Excise Duty

Vehicle Excise Duty (Road Fund Licence) is based upon the type of fuel a vehicle uses and the amount of carbon dioxide (CO<sub>2</sub>) it emits, measured in grams per kilometre (g/km). The DVLA has created six categories for petrol engines and six categories for diesel engines.

#### CO<sub>2</sub> emission figures

The CO<sub>2</sub> emission figures quoted in the technical data section on pages 22-23 are based on a fully laden vehicle, including the driver, and the heaviest possible options configuration. Actual CO<sub>2</sub> emissions may be lower depending on options selected.

	Petrol engines	Diesel engines
<b>A – up to 100 g/km</b>	£0.00	£0.00
<b>B – 101 to 120 g/km</b>	£40.00	£50.00
<b>C – 121 to 150 g/km</b>	£100.00	£110.00
<b>D – 151 to 165 g/km</b>	£125.00	£135.00
<b>E – 166 to 185 g/km</b>	£150.00	£160.00
<b>F – 186 to 225 g/km</b>	£190.00	£195.00
<b>G – over 226 g/km</b>	£210.00	£215.00

## Servicing

### Servicing tailored to your needs

Prior to the 2000 model year, almost all Audi models followed a traditional fixed Service Schedule similar to that of other major car manufacturers: a Lubrication Service every 10,000 miles and an Inspection Service every 12 months or 20,000 miles – whichever occurred sooner. Since then, Audi has introduced a more flexible maintenance system that works in accordance with how, where and how much an individual uses their car.

The two Servicing Regimes available are the conventional 'Inspection Service Regime' and the flexible 'LongLife Service Regime'. When you purchase a new car, we will recommend one of these regimes to you depending on your own individual driving style and journey-type. The tables below should give you an indication of which regime might be more appropriate for you.

With the LongLife Service Regime, on-board sensors continuously monitor the condition of the engine oil in terms of temperature, level and oil degradation. The monitoring system also checks mileage, brake-pad wear and battery condition. Using this information, the car's on-board

computer calculates its own maintenance interval, providing you with ample warning of a due Service via the 'distance to Service' display.

In practice, this means that every Audi gets the maintenance it needs, when it needs it. For companies and private owners alike, there are many advantages to the LongLife Service Regime. Longer service intervals mean lower maintenance costs, and thus lower whole-life costs. According to company car mileage monitored at Audi since the introduction of LongLife, petrol engines are typically achieving an average of at least 17,500 miles and diesel engines around 20,000 miles between services.

One of the factors that makes this kind of servicing regime possible is the advanced engineering and technology that goes into Audi engines. Furthermore, Audi use high-grade long-life oils such as Castrol SLX LongLife III, which are designed to withstand ageing and high loads without deterioration. Compared to conventional oils, these advanced-formulation oils also give exceptional levels of engine protection, are kinder to the environment and deliver average fuel savings of 2.7%.

#### Inspection Service Regime

	Vehicle usage:
<b>Mileage</b>	Less than 10,000* miles per annum.
<b>Type of Journey</b>	Mainly city/town centre driving. Short journeys.
<b>Conditions</b>	Frequent cold starts. High engine loading – e.g. frequent hill climbs, vehicle fully loaded, towing.
<b>Driving style</b>	Uneconomical – e.g. heavy acceleration, heavy braking, constant changes in speed, constant use of high revs, 'sporty' driving.
	Service intervals:
<b>Oil-change Service</b>	Every 10,000* miles/1 year
<b>Interval Service</b>	Every 20,000* miles/2 years
<b>Interval Service Inspection</b>	Every 40,000* miles/4 years

#### LongLife Service Regime

	Vehicle usage:
<b>Mileage</b>	More than 30 miles per day.
<b>Type of Journey</b>	Motorway and main road driving. Mainly longer distance journeys. Constant speeds.
<b>Conditions</b>	Normal engine loading – e.g. with little or no towing, with little or no hill climbs. Normal vehicle loading.
<b>Driving style</b>	Moderate acceleration, moderate braking, engine revs mainly below 3000.
	Service intervals:
<b>Interval Service</b>	Flexible to a maximum 20,000* miles/2 years
<b>Interval Service Inspection</b>	Every 40,000* miles/4 years

\*Mileages are approximate as the Service Indicator system uses kilometres as its distance measurement.

## Service by Design

At Audi, we believe our customers have the right to expect excellent service each and every time they make contact with us. To ensure that this happens, we have agreed a set of service standards with our Audi Centre network that governs the way they do business with you. These standards apply to both Sales and Aftersales, and we actively monitor our Centres to ensure that you receive the highest level of customer service. These service standards will ensure a consistent, stress-free experience whenever you are in contact with anyone representing the Audi brand.

### **Every Audi Centre will be open during the following hours:**

**Sales:** 9am-6pm Monday to Friday  
9am-5pm Saturday

**Service:** 8am-6pm Monday to Friday  
8.30am-1pm Saturday

Sunday opening at local discretion.

### **Test drives**

Whilst we cannot always have the desired demonstrator car ready immediately, we will confirm arrangements for a test drive within two working days (subject to status).

### **New Car delivery**

Once we have confirmed a delivery date with you, we will keep you informed of progress. In the unlikely event of a delay, we will provide you with a courtesy car to minimise inconvenience and keep you mobile.

### **Delivery to any location within the UK**

To maximise your Audi experience right from the first day of ownership, we will deliver your car to your preferred location – whether that's home or your place of work (subject to reasonable notice).

### **Every attention to detail**

Your ownership experience starts with half a tank of fuel.

### **Quotation response**

We are committed to answering any quotation request within 1 working day.

### **Training**

We run a continuous training development programme for all our staff so that we consistently deliver a high-quality, professional service.

### **Formal complaints procedure**

We have a complaints procedure designed to ensure any negative issue you raise with us is dealt with properly.

### **Courtesy cars**

When your car is off the road, perhaps due to a scheduled service or MOT, we will offer you an Audi Courtesy Vehicle until yours is ready. We'll even collect from and deliver to your chosen location, keeping hassle to an absolute minimum.

### **All our courtesy cars are insured and fuelled**

Upon collection or delivery, your courtesy car will have a minimum of a quarter of a tank of fuel; all we ask is that you replace any fuel used before returning it to us. On presentation of your driving licence, we will also insure the car free of charge.

### **Service bookings**

If you do not require a courtesy car, we will service your Audi within a maximum of 5 working days. If you do choose to take a courtesy car, we will promise to service your vehicle within a maximum of 10 working days.

### **Cleaning**

When your car comes to our workshop, we will wash and vacuum it at no extra cost.

### **No hidden charges**

You will be consulted before we carry out any necessary work on your vehicle, and anything charged for will be itemised on your bill. No extra work will be undertaken without your permission.

### **A personal service**

All work will be done by a named Audi technician, to whom you can personally direct questions or requests should you need to.

### **Environmental commitment**

We promise to dispose of all non-biodegradable materials from your vehicle in a responsible manner.



## Pricing information

### Pricing

Prices and specifications given are correct at the time of printing. Always check details with your Audi Centre, as Audi policies are continually developing. We reserve the right to change prices or specifications at any time.

All prices are subject to VAT, currently charged at 17.5%.

Delivery charges and numberplates are not included in the vehicle price.

Delivery charge	£471.06
Numberplates	£20.00
VAT	£85.94
Total	£577.00

### Audi Roadside Assistance

Your new car comes complete with free roadside assistance and recovery across the UK provided by RAC Motoring Services. Your 24 months' free cover can be extended for a further year free-of-charge, provided that your vehicle is serviced and, if necessary, repaired by an Authorised Audi Centre or Audi-Authorised Repairer in accordance with the manufacturer's instructions.

### Audi Customer Care

Every new Audi benefits from the comprehensive Audi Customer Care Package, which comprises:

- ▶ A 3-year Audi warranty, which covers you for unlimited mileage in the first 2 years of ownership, with a full mechanical and electrical warranty which covers you for up to 60,000 miles in the 3rd year
- ▶ A 3-year paint warranty
- ▶ A 12-year anti-corrosion warranty
- ▶ Up to 3 years' UK roadside assistance and recovery.

This package, together with Audi variable Service intervals, offers a combination unmatched by any other major manufacturer. Contact your Audi Centre for full details.

### Audi Tax-Free Sales

If you are entitled to purchase a vehicle free of VAT, normally through Military or Diplomatic privilege, please contact your local Audi Centre for full details.

Should you have any difficulty obtaining the information you require, please call Freephone 0800 585878.

### Audi Finance

Audi Finance specialise in providing funding solutions for Audi drivers. Whether your Audi is for private or business use, there are a range of funding options to choose from.

Below is our full range of finance products.

- ▶ Solutions – a Personal Contract Plan
- ▶ Hire Purchase
- ▶ Lease Purchase
- ▶ Finance Lease
- ▶ Contract Hire

With all our finance products, you can choose one of our fixed-cost maintenance plans, which are designed to help you budget accurately.

No matter what Audi model you choose, your local Audi Centre can provide you with a personalised quote which could fit your budget and motoring needs.

Audi Finance is a trading name of Volkswagen Financial Services (UK) Limited. An offer of finance depends on certain conditions. Available to people over 18 in the UK only.

### Audi Insurance

Motor insurance specially tailored to your Audi is available from Audi Insurance. For a no-obligation quote, please ring Linkline on 0845 6016014.



**Audi UK**  
Customer Service  
P.O. Box 400  
Walsall  
WS5 4XX  
0800 699888  
[www.audi.co.uk](http://www.audi.co.uk)

Specifications and prices subject  
to change without notice.

© Audi UK

Printed in the UK  
Edition 4. 12/06  
Effective from December 2006  
2007 model year